

Test Plot 1#: GSM 850_Head Flat_Middle**DUT: E-Tab 3G; Type: DT0704K08; 17092701120**

Communication System: Generic GSM; Frequency: 836.6 MHz; Duty Cycle: 1:8
Medium parameters used: $f = 836.6$ MHz; $\sigma = 0.893$ S/m; $\epsilon_r = 41.713$; $\rho = 1000$ kg/m³ ;
Phantom section: Flat Section

DASY5 Configuration:

- Probe: EX3DV4 - SN7329; ConvF(9.36, 9.36, 9.36); Calibrated: 2017/3/13;
- Sensor-Surface: 1.4mm (Mechanical Surface Detection)
- Electronics: DAE4 Sn772; Calibrated: 2017/10/9
- Phantom: Triple Flat Phantom 5.1C; Type: QD 000 P51 CA; Serial: 1130
- Measurement SW: DASY52, Version 52.8 (8);

Area Scan (101x91x1): Interpolated grid: dx=1.500 mm, dy=1.500 mm

Maximum value of SAR (interpolated) = 0.346 W/kg

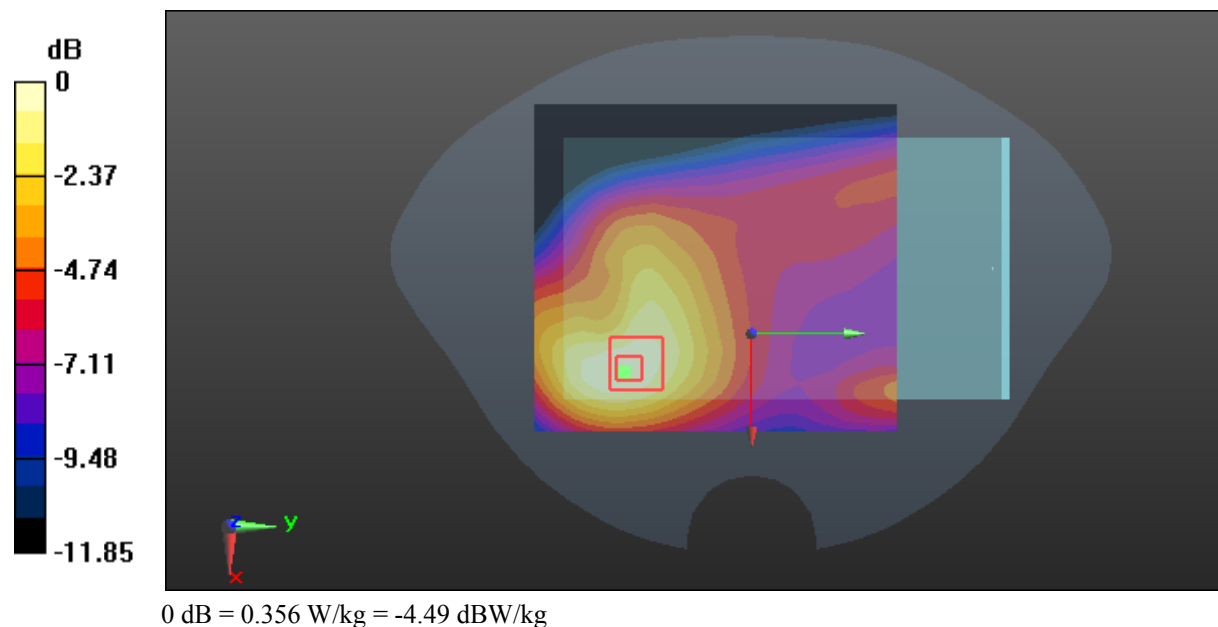
Zoom Scan (5x5x7)/Cube 0: Measurement grid: dx=8mm, dy=8mm, dz=5mm

Reference Value = 9.450 V/m; Power Drift = -0.10 dB

Peak SAR (extrapolated) = 0.408 W/kg

SAR(1 g) = 0.265 W/kg; SAR(10 g) = 0.176 W/kg

Maximum value of SAR (measured) = 0.356 W/kg



Test Plot 2#: GSM 850_Body Worn Back_Low**DUT: E-Tab 3G; Type: DT0704K08; 17092701120**

Communication System: Generic GSM; Frequency: 824.2 MHz; Duty Cycle: 1:8
Medium parameters used: $f = 824.2$ MHz; $\sigma = 0.945$ S/m; $\epsilon_r = 56.303$; $\rho = 1000$ kg/m³ ;
Phantom section: Right Section

DASY5 Configuration:

- Probe: EX3DV4 - SN7329; ConvF(9.58, 9.58, 9.58); Calibrated: 2017/3/13;
- Sensor-Surface: 1.4mm (Mechanical Surface Detection)
- Electronics: DAE4 Sn772; Calibrated: 2017/10/9
- Phantom: Triple Flat Phantom 5.1C; Type: QD 000 P51 CA; Serial: 1130
- Measurement SW: DASY52, Version 52.8 (8);

Area Scan (71x91x1): Interpolated grid: dx=1.500 mm, dy=1.500 mm

Maximum value of SAR (interpolated) = 1.46 W/kg

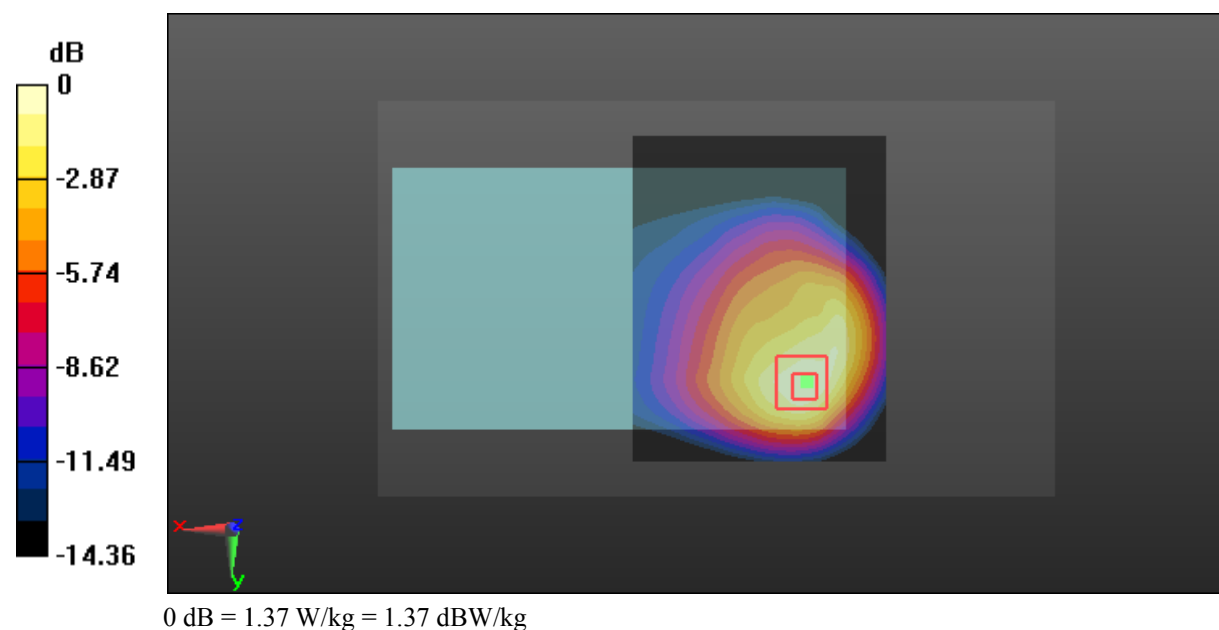
Zoom Scan (5x5x7)/Cube 0: Measurement grid: dx=8mm, dy=8mm, dz=5mm

Reference Value = 15.82 V/m; Power Drift = 0.01 dB

Peak SAR (extrapolated) = 1.66 W/kg

SAR(1 g) = 0.955 W/kg; SAR(10 g) = 0.575 W/kg

Maximum value of SAR (measured) = 1.37 W/kg



Test Plot 3#: GSM 850_Body Worn Back_Middle**DUT: E-Tab 3G; Type: DT0704K08; 17092701120**

Communication System: Generic GSM; Frequency: 836.6 MHz; Duty Cycle: 1:8
Medium parameters used: $f = 836.6$ MHz; $\sigma = 0.963$ S/m; $\epsilon_r = 56.71$; $\rho = 1000$ kg/m³ ;
Phantom section: Right Section

DASY5 Configuration:

- Probe: EX3DV4 - SN7329; ConvF(9.58, 9.58, 9.58); Calibrated: 2017/3/13;
- Sensor-Surface: 1.4mm (Mechanical Surface Detection)
- Electronics: DAE4 Sn772; Calibrated: 2017/10/9
- Phantom: Triple Flat Phantom 5.1C; Type: QD 000 P51 CA; Serial: 1130
- Measurement SW: DASY52, Version 52.8 (8);

Area Scan (71x91x1): Interpolated grid: dx=1.500 mm, dy=1.500 mm

Maximum value of SAR (interpolated) = 1.47 W/kg

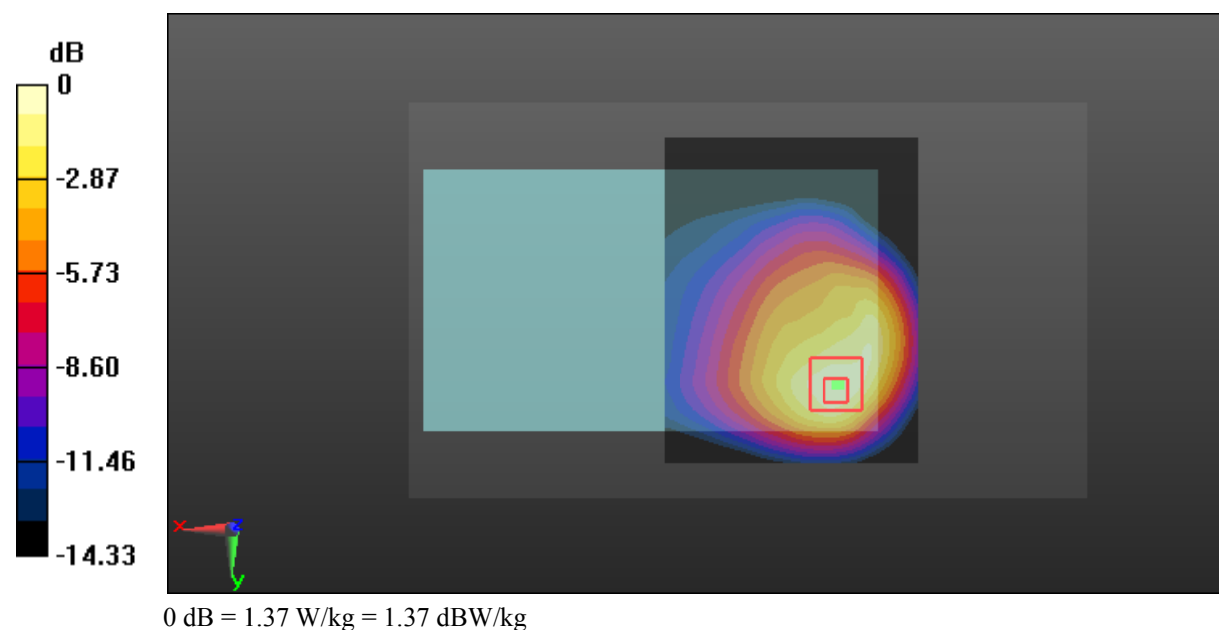
Zoom Scan (5x5x7)/Cube 0: Measurement grid: dx=8mm, dy=8mm, dz=5mm

Reference Value = 16.00 V/m; Power Drift = 0.07 dB

Peak SAR (extrapolated) = 1.70 W/kg

SAR(1 g) = 0.966 W/kg; SAR(10 g) = 0.580 W/kg

Maximum value of SAR (measured) = 1.37 W/kg



Test Plot 4#: GSM 850_Body Worn Back_High**DUT: E-Tab 3G; Type: DT0704K08; 17092701120**

Communication System: Generic GSM; Frequency: 848.8 MHz; Duty Cycle: 1:8
Medium parameters used: $f = 848.8$ MHz; $\sigma = 0.958$ S/m; $\epsilon_r = 56.663$; $\rho = 1000$ kg/m³ ;
Phantom section: Right Section

DASY5 Configuration:

- Probe: EX3DV4 - SN7329; ConvF(9.58, 9.58, 9.58); Calibrated: 2017/3/13;
- Sensor-Surface: 1.4mm (Mechanical Surface Detection)
- Electronics: DAE4 Sn772; Calibrated: 2017/10/9
- Phantom: Triple Flat Phantom 5.1C; Type: QD 000 P51 CA; Serial: 1130
- Measurement SW: DASY52, Version 52.8 (8);

Area Scan (71x91x1): Interpolated grid: dx=1.500 mm, dy=1.500 mm

Maximum value of SAR (interpolated) = 1.47 W/kg

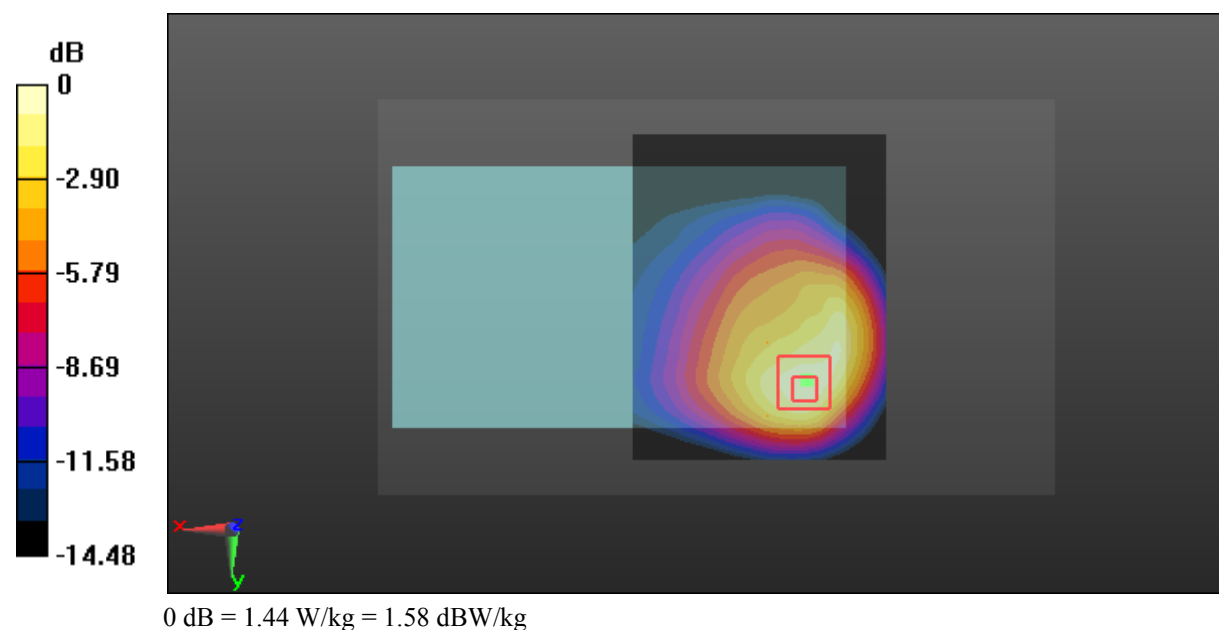
Zoom Scan (5x5x7)/Cube 0: Measurement grid: dx=8mm, dy=8mm, dz=5mm

Reference Value = 15.99 V/m; Power Drift = 0.06 dB

Peak SAR (extrapolated) = 1.79 W/kg

SAR(1 g) = 0.986 W/kg; SAR(10 g) = 0.589 W/kg

Maximum value of SAR (measured) = 1.44 W/kg



Test Plot 5#: GSM 850_Body Back_Low**DUT: E-Tab 3G; Type: DT0704K08; 17092701120**

Communication System: Generic GPRS-2 slots; Frequency: 824.2 MHz; Duty Cycle: 1:4
Medium parameters used: $f = 824.2$ MHz; $\sigma = 0.945$ S/m; $\epsilon_r = 56.303$; $\rho = 1000$ kg/m³ ;
Phantom section: Right Section

DASY5 Configuration:

- Probe: EX3DV4 - SN7329; ConvF(9.58, 9.58, 9.58); Calibrated: 2017/3/13;
- Sensor-Surface: 1.4mm (Mechanical Surface Detection)
- Electronics: DAE4 Sn772; Calibrated: 2017/10/9
- Phantom: Triple Flat Phantom 5.1C; Type: QD 000 P51 CA; Serial: 1130
- Measurement SW: DASY52, Version 52.8 (8);

Area Scan (71x91x1): Interpolated grid: dx=1.500 mm, dy=1.500 mm

Maximum value of SAR (interpolated) = 1.79 W/kg

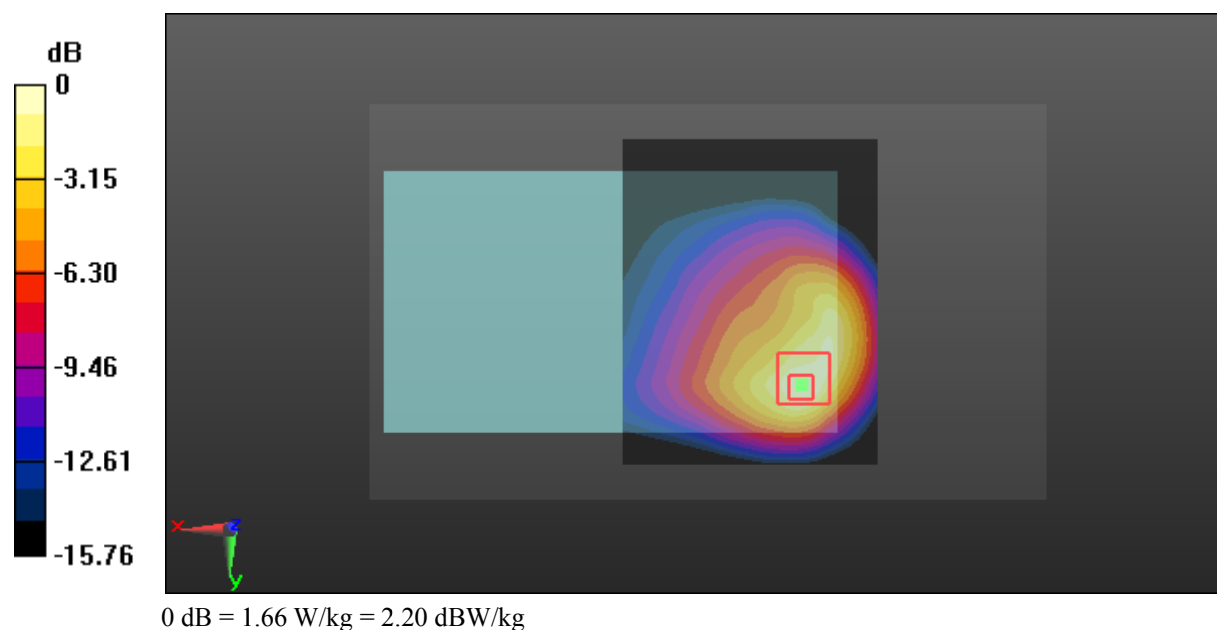
Zoom Scan (5x5x7)/Cube 0: Measurement grid: dx=8mm, dy=8mm, dz=5mm

Reference Value = 14.62 V/m; Power Drift = 0.04 dB

Peak SAR (extrapolated) = 2.00 W/kg

SAR(1 g) = 1.09 W/kg; SAR(10 g) = 0.632 W/kg

Maximum value of SAR (measured) = 1.66 W/kg



Test Plot 6#: GSM 850_Body Back_Middle**DUT: E-Tab 3G; Type: DT0704K08; 17092701120**

Communication System: Generic GPRS-2 slots; Frequency: 836.6 MHz; Duty Cycle: 1:4
Medium parameters used: $f = 836.6$ MHz; $\sigma = 0.963$ S/m; $\epsilon_r = 56.71$; $\rho = 1000$ kg/m³ ;
Phantom section: Right Section

DASY5 Configuration:

- Probe: EX3DV4 - SN7329; ConvF(9.58, 9.58, 9.58); Calibrated: 2017/3/13;
- Sensor-Surface: 1.4mm (Mechanical Surface Detection)
- Electronics: DAE4 Sn772; Calibrated: 2017/10/9
- Phantom: Triple Flat Phantom 5.1C; Type: QD 000 P51 CA; Serial: 1130
- Measurement SW: DASY52, Version 52.8 (8);

Area Scan (71x91x1): Interpolated grid: dx=1.500 mm, dy=1.500 mm

Maximum value of SAR (interpolated) = 1.61 W/kg

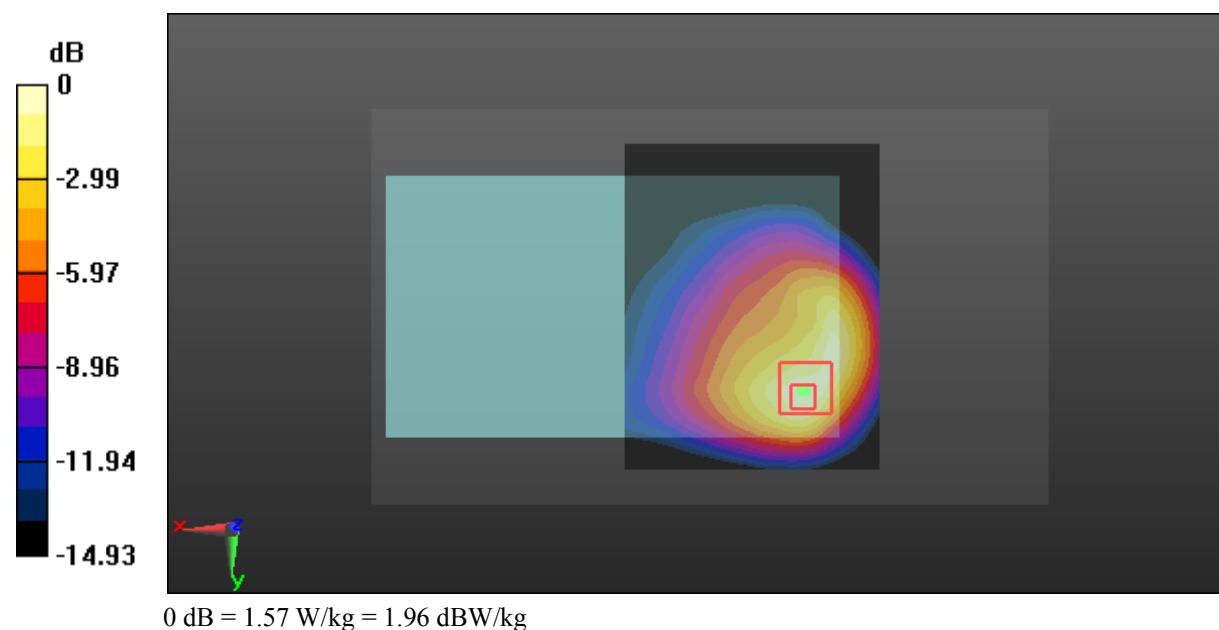
Zoom Scan (5x5x7)/Cube 0: Measurement grid: dx=8mm, dy=8mm, dz=5mm

Reference Value = 14.74 V/m; Power Drift = 0.02 dB

Peak SAR (extrapolated) = 1.97 W/kg

SAR(1 g) = 1.05 W/kg; SAR(10 g) = 0.621 W/kg

Maximum value of SAR (measured) = 1.57 W/kg



Test Plot 7#: GSM 850_Body Back_High**DUT: E-Tab 3G; Type: DT0704K08; 17092701120**

Communication System: Generic GPRS-2 slots; Frequency: 848.8 MHz; Duty Cycle: 1:4
Medium parameters used: $f = 848.8$ MHz; $\sigma = 0.958$ S/m; $\epsilon_r = 56.663$; $\rho = 1000$ kg/m³ ;
Phantom section: Right Section

DASY5 Configuration:

- Probe: EX3DV4 - SN7329; ConvF(9.58, 9.58, 9.58); Calibrated: 2017/3/13;
- Sensor-Surface: 1.4mm (Mechanical Surface Detection)
- Electronics: DAE4 Sn772; Calibrated: 2017/10/9
- Phantom: Triple Flat Phantom 5.1C; Type: QD 000 P51 CA; Serial: 1130
- Measurement SW: DASY52, Version 52.8 (8);

Area Scan (71x91x1): Interpolated grid: dx=1.500 mm, dy=1.500 mm

Maximum value of SAR (interpolated) = 1.67 W/kg

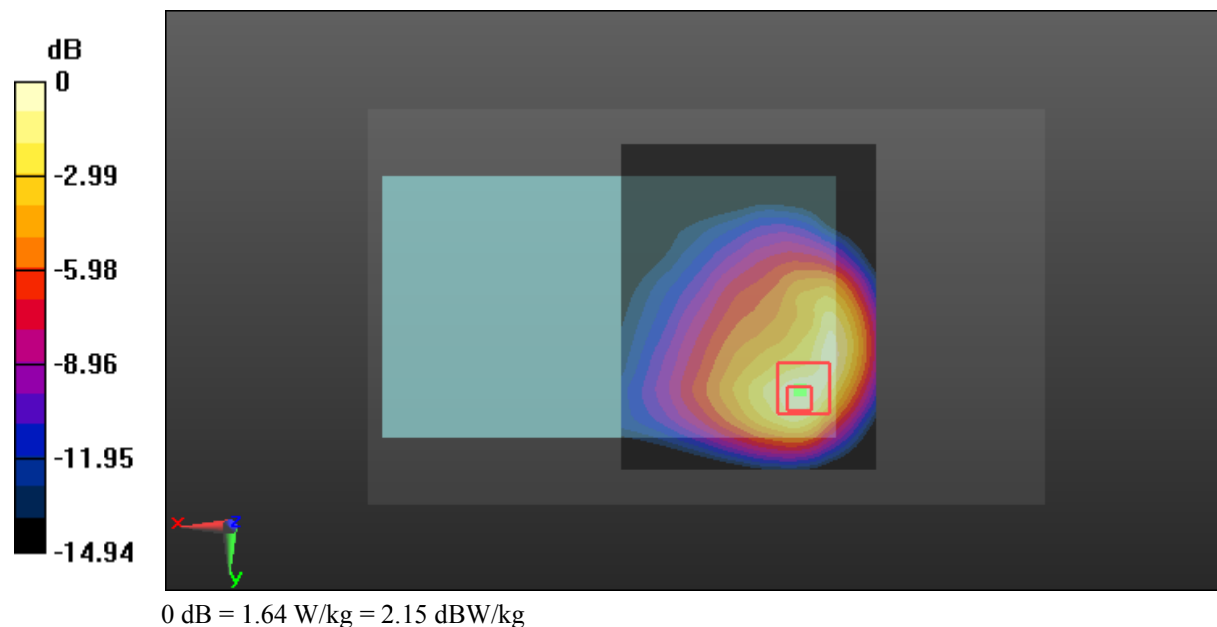
Zoom Scan (5x5x7)/Cube 0: Measurement grid: dx=8mm, dy=8mm, dz=5mm

Reference Value = 14.34 V/m; Power Drift = 0.10 dB

Peak SAR (extrapolated) = 2.09 W/kg

SAR(1 g) = 1.09 W/kg; SAR(10 g) = 0.637 W/kg

Maximum value of SAR (measured) = 1.64 W/kg



Test Plot 8#: GSM 850_Body Right_Middle**DUT: E-Tab 3G; Type: DT0704K08; 17092701120**

Communication System: Generic GPRS-2 slots; Frequency: 836.6 MHz; Duty Cycle: 1:4
Medium parameters used: $f = 836.6$ MHz; $\sigma = 0.963$ S/m; $\epsilon_r = 56.71$; $\rho = 1000$ kg/m³ ;
Phantom section: Right Section

DASY5 Configuration:

- Probe: EX3DV4 - SN7329; ConvF(9.58, 9.58, 9.58); Calibrated: 2017/3/13;
- Sensor-Surface: 1.4mm (Mechanical Surface Detection)
- Electronics: DAE4 Sn772; Calibrated: 2017/10/9
- Phantom: Triple Flat Phantom 5.1C; Type: QD 000 P51 CA; Serial: 1130
- Measurement SW: DASY52, Version 52.8 (8);

Area Scan (131x41x1): Interpolated grid: $dx=1.500$ mm, $dy=1.500$ mm

Maximum value of SAR (interpolated) = 0.301 W/kg

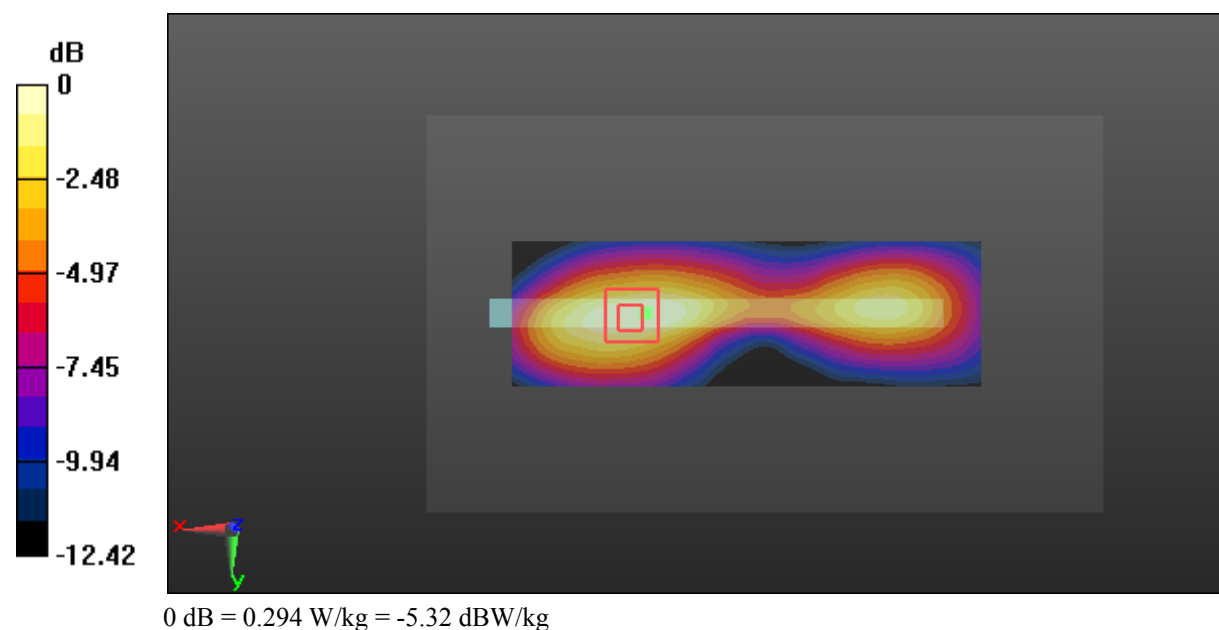
Zoom Scan (5x5x7)/Cube 0: Measurement grid: $dx=8$ mm, $dy=8$ mm, $dz=5$ mm

Reference Value = 8.112 V/m; Power Drift = 0.14 dB

Peak SAR (extrapolated) = 0.347 W/kg

SAR(1 g) = 0.205 W/kg; SAR(10 g) = 0.131 W/kg

Maximum value of SAR (measured) = 0.294 W/kg



Test Plot 9#: GSM 850_Body Bottom_Low**DUT: E-Tab 3G; Type: DT0704K08; 17092701120**

Communication System: Generic GPRS-2 slots; Frequency: 824.2 MHz; Duty Cycle: 1:4
Medium parameters used: $f = 824.2$ MHz; $\sigma = 0.945$ S/m; $\epsilon_r = 56.303$; $\rho = 1000$ kg/m³ ;
Phantom section: Right Section

DASY5 Configuration:

- Probe: EX3DV4 - SN7329; ConvF(9.58, 9.58, 9.58); Calibrated: 2017/3/13;
- Sensor-Surface: 1.4mm (Mechanical Surface Detection)
- Electronics: DAE4 Sn772; Calibrated: 2017/10/9
- Phantom: Triple Flat Phantom 5.1C; Type: QD 000 P51 CA; Serial: 1130
- Measurement SW: DASY52, Version 52.8 (8);

Area Scan (101x41x1): Interpolated grid: dx=1.500 mm, dy=1.500 mm

Maximum value of SAR (interpolated) = 1.17 W/kg

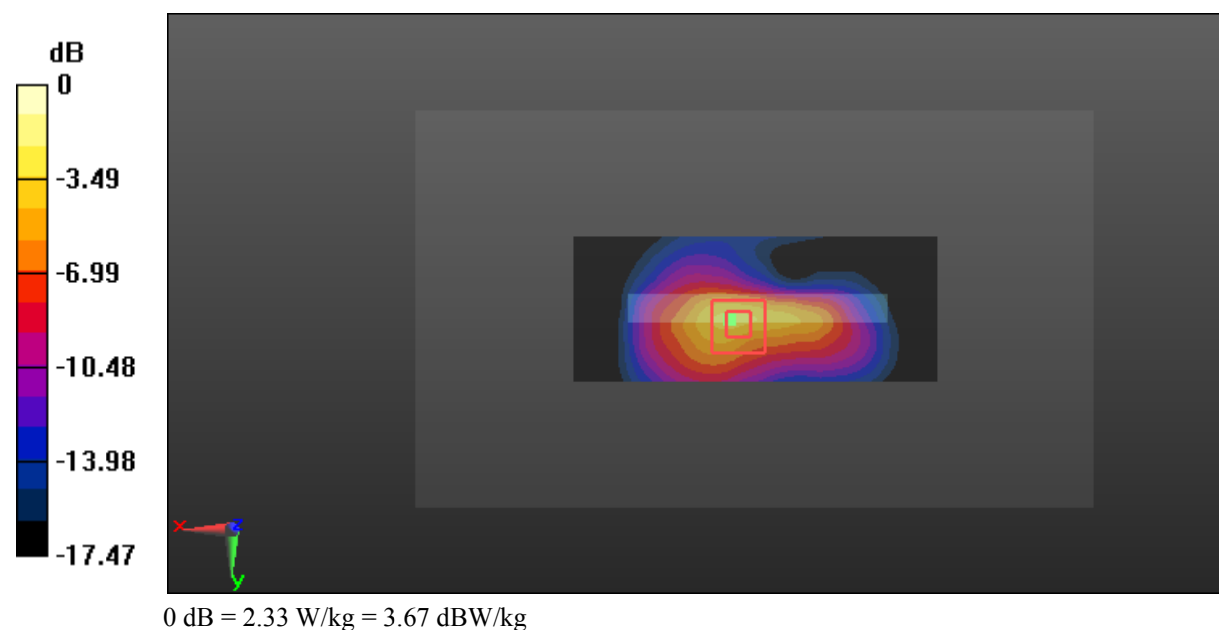
Zoom Scan (5x5x7)/Cube 0: Measurement grid: dx=8mm, dy=8mm, dz=5mm

Reference Value = 26.29 V/m; Power Drift = -0.19 dB

Peak SAR (extrapolated) = 3.18 W/kg

SAR(1 g) = 1.16 W/kg; SAR(10 g) = 0.539 W/kg

Maximum value of SAR (measured) = 2.33 W/kg



Test Plot 10#: GSM 850_Body Bottom_Middle**DUT: E-Tab 3G; Type: DT0704K08; 17092701120**

Communication System: Generic GPRS-2 slots; Frequency: 836.6 MHz; Duty Cycle: 1:4
Medium parameters used: $f = 836.6$ MHz; $\sigma = 0.963$ S/m; $\epsilon_r = 56.71$; $\rho = 1000$ kg/m³ ;
Phantom section: Right Section

DASY5 Configuration:

- Probe: EX3DV4 - SN7329; ConvF(9.58, 9.58, 9.58); Calibrated: 2017/3/13;
- Sensor-Surface: 1.4mm (Mechanical Surface Detection)
- Electronics: DAE4 Sn772; Calibrated: 2017/10/9
- Phantom: Triple Flat Phantom 5.1C; Type: QD 000 P51 CA; Serial: 1130
- Measurement SW: DASY52, Version 52.8 (8);

Area Scan (101x41x1): Interpolated grid: dx=1.500 mm, dy=1.500 mm

Maximum value of SAR (interpolated) = 1.23 W/kg

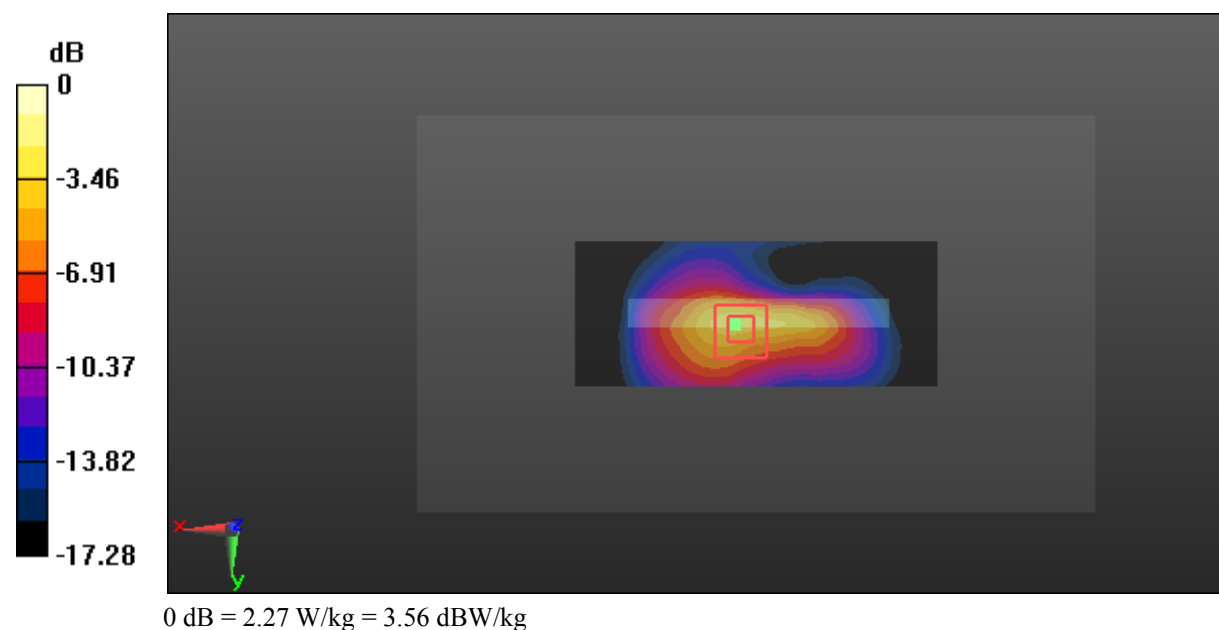
Zoom Scan (5x5x7)/Cube 0: Measurement grid: dx=8mm, dy=8mm, dz=5mm

Reference Value = 28.28 V/m; Power Drift = -0.05 dB

Peak SAR (extrapolated) = 3.03 W/kg

SAR(1 g) = 1.15 W/kg; SAR(10 g) = 0.542 W/kg

Maximum value of SAR (measured) = 2.27 W/kg



Test Plot 11#: GSM 850_Body Bottom_High**DUT: E-Tab 3G; Type: DT0704K08; 17092701120**

Communication System: Generic GPRS-2 slots; Frequency: 848.8 MHz; Duty Cycle: 1:4
Medium parameters used: $f = 848.8$ MHz; $\sigma = 0.958$ S/m; $\epsilon_r = 56.663$; $\rho = 1000$ kg/m³ ;
Phantom section: Right Section

DASY5 Configuration:

- Probe: EX3DV4 - SN7329; ConvF(9.58, 9.58, 9.58); Calibrated: 2017/3/13;
- Sensor-Surface: 1.4mm (Mechanical Surface Detection)
- Electronics: DAE4 Sn772; Calibrated: 2017/10/9
- Phantom: Triple Flat Phantom 5.1C; Type: QD 000 P51 CA; Serial: 1130
- Measurement SW: DASY52, Version 52.8 (8);

Area Scan (101x41x1): Interpolated grid: dx=1.500 mm, dy=1.500 mm

Maximum value of SAR (interpolated) = 1.50 W/kg

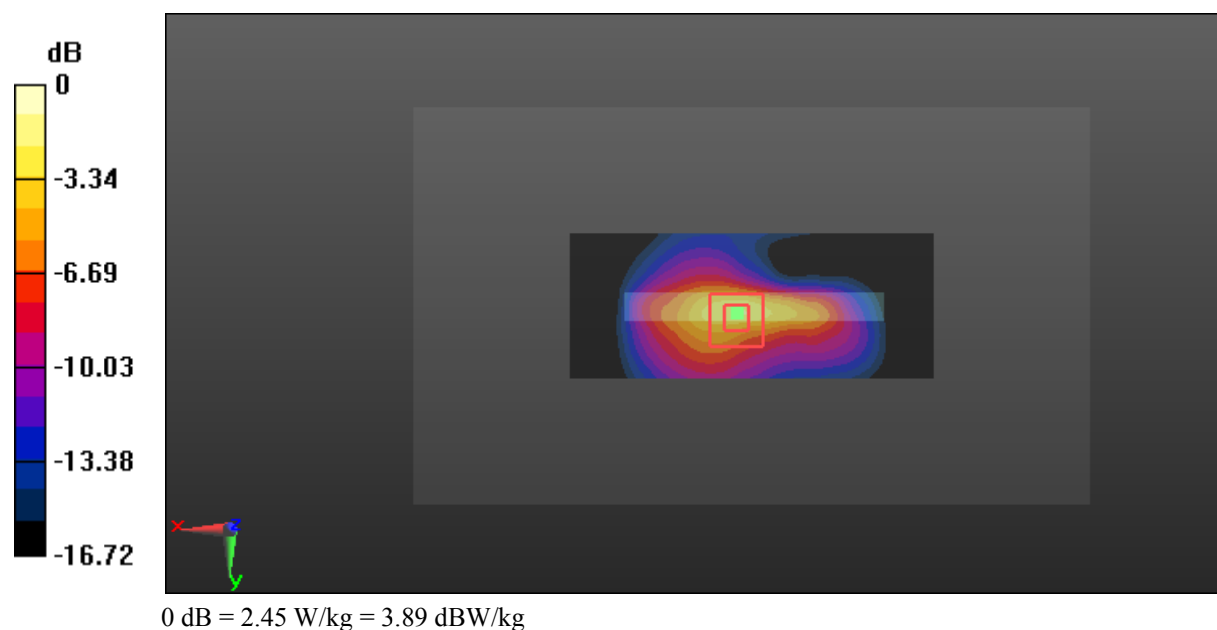
Zoom Scan (5x5x7)/Cube 0: Measurement grid: dx=8mm, dy=8mm, dz=5mm

Reference Value = 31.67 V/m; Power Drift = -0.05 dB

Peak SAR (extrapolated) = 3.27 W/kg

SAR(1 g) = 1.18 W/kg; SAR(10 g) = 0.563 W/kg

Maximum value of SAR (measured) = 2.45 W/kg



Test Plot 12#: GSM 1900_Head Flat_Middle**DUT: E-Tab 3G; Type: DT0704K08; 17092701120**

Communication System: Generic GSM; Frequency: 1880 MHz; Duty Cycle: 1:8
Medium parameters used: $f = 1880$ MHz; $\sigma = 1.391$ S/m; $\epsilon_r = 40.315$; $\rho = 1000$ kg/m³ ;
Phantom section: Flat Section

DASY5 Configuration:

- Probe: EX3DV4 - SN7329; ConvF(8.18, 8.18, 8.18); Calibrated: 2017/3/13;
- Sensor-Surface: 1.4mm (Mechanical Surface Detection)
- Electronics: DAE4 Sn772; Calibrated: 2017/10/9
- Phantom: Triple Flat Phantom 5.1C; Type: QD 000 P51 CA; Serial: 1130
- Measurement SW: DASY52, Version 52.8 (8);

Area Scan (101x91x1): Interpolated grid: dx=1.500 mm, dy=1.500 mm

Maximum value of SAR (interpolated) = 0.160 W/kg

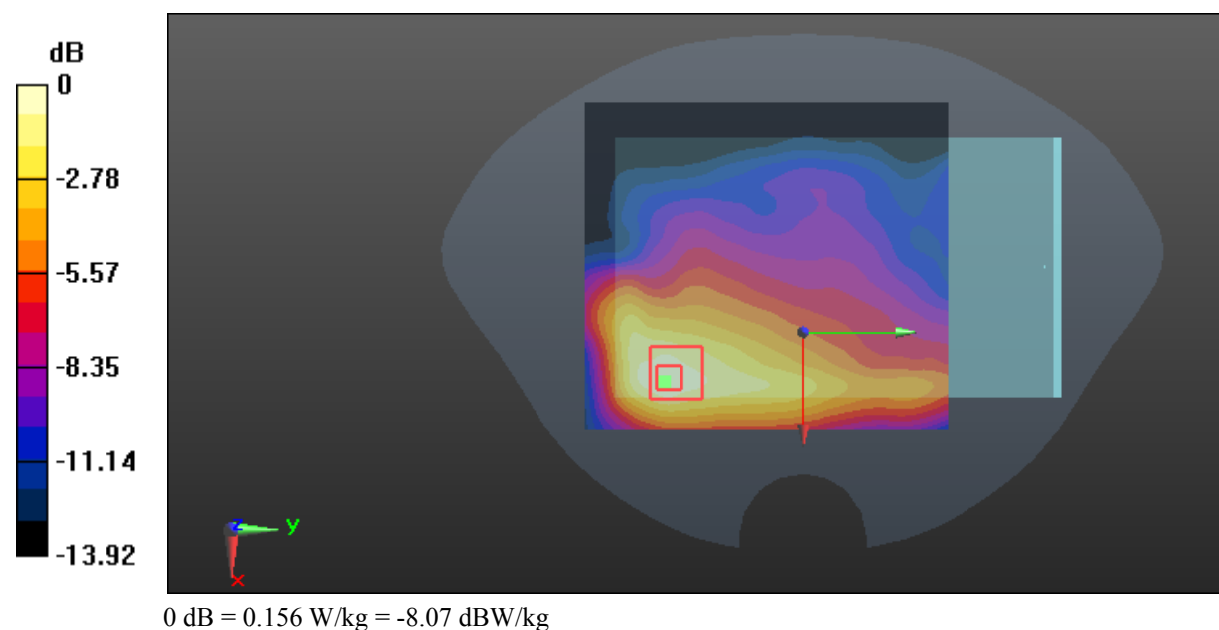
Zoom Scan (5x5x7)/Cube 0: Measurement grid: dx=8mm, dy=8mm, dz=5mm

Reference Value = 4.028 V/m; Power Drift = 0.17 dB

Peak SAR (extrapolated) = 0.185 W/kg

SAR(1 g) = 0.109 W/kg; SAR(10 g) = 0.065 W/kg

Maximum value of SAR (measured) = 0.156 W/kg



Test Plot 13#: GSM 1900_Body Worn Back_Middle**DUT: E-Tab 3G; Type: DT0704K08; 17092701120**

Communication System: Generic GSM; Frequency: 1880 MHz; Duty Cycle: 1:8
Medium parameters used: $f = 1880$ MHz; $\sigma = 1.495$ S/m; $\epsilon_r = 53.915$; $\rho = 1000$ kg/m³ ;
Phantom section: Left Section

DASY5 Configuration:

- Probe: EX3DV4 - SN7329; ConvF(7.77, 7.77, 7.77); Calibrated: 2017/3/13;
- Sensor-Surface: 1.4mm (Mechanical Surface Detection)
- Electronics: DAE4 Sn772; Calibrated: 2017/10/9
- Phantom: Triple Flat Phantom 5.1C; Type: QD 000 P51 CA; Serial: 1130
- Measurement SW: DASY52, Version 52.8 (8);

Area Scan (71x91x1): Interpolated grid: dx=1.500 mm, dy=1.500 mm

Maximum value of SAR (interpolated) = 0.606 W/kg

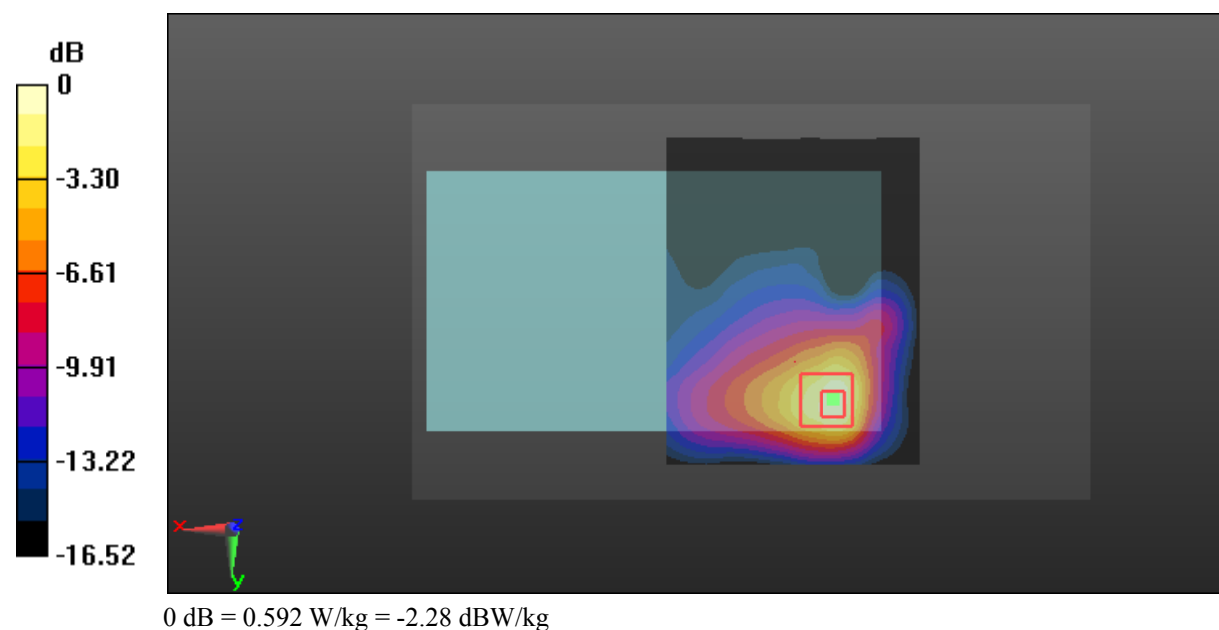
Zoom Scan (5x5x7)/Cube 0: Measurement grid: dx=8mm, dy=8mm, dz=5mm

Reference Value = 4.453 V/m; Power Drift = -0.03 dB

Peak SAR (extrapolated) = 0.733 W/kg

SAR(1 g) = 0.389 W/kg; SAR(10 g) = 0.199 W/kg

Maximum value of SAR (measured) = 0.592 W/kg



Test Plot 14#: GSM 1900_Body Back_Middle**DUT: E-Tab 3G; Type: DT0704K08; 17092701120**

Communication System: Generic GPRS-3 slots; Frequency: 1880 MHz; Duty Cycle: 1:2.66
Medium parameters used: $f = 1880$ MHz; $\sigma = 1.495$ S/m; $\epsilon_r = 53.915$; $\rho = 1000$ kg/m³ ;
Phantom section: Left Section

DASY5 Configuration:

- Probe: EX3DV4 - SN7329; ConvF(7.77, 7.77, 7.77); Calibrated: 2017/3/13;
- Sensor-Surface: 1.4mm (Mechanical Surface Detection)
- Electronics: DAE4 Sn772; Calibrated: 2017/10/9
- Phantom: Triple Flat Phantom 5.1C; Type: QD 000 P51 CA; Serial: 1130
- Measurement SW: DASY52, Version 52.8 (8);

Area Scan (71x91x1): Interpolated grid: dx=1.500 mm, dy=1.500 mm

Maximum value of SAR (interpolated) = 0.577 W/kg

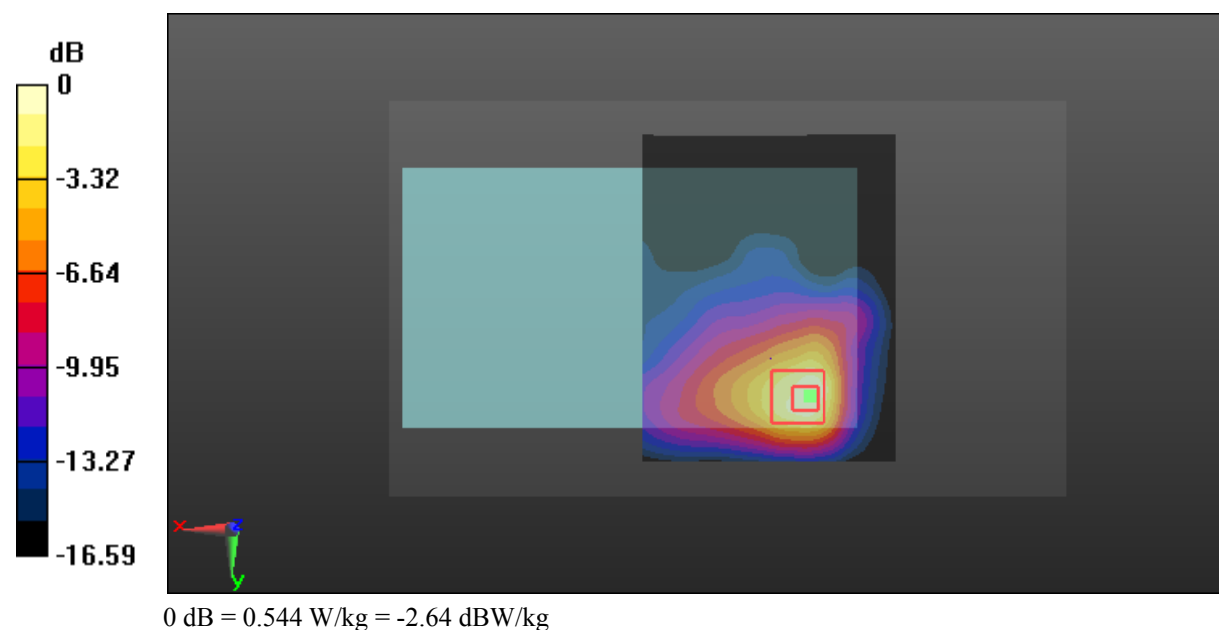
Zoom Scan (5x5x7)/Cube 0: Measurement grid: dx=8mm, dy=8mm, dz=5mm

Reference Value = 4.292 V/m; Power Drift = 0.13 dB

Peak SAR (extrapolated) = 0.672 W/kg

SAR(1 g) = 0.362 W/kg; SAR(10 g) = 0.187 W/kg

Maximum value of SAR (measured) = 0.544 W/kg



Test Plot 15#: GSM 1900_Body Right_Middle**DUT: E-Tab 3G; Type: DT0704K08; 17092701120**

Communication System: Generic GPRS-3 slots; Frequency: 1880 MHz; Duty Cycle: 1:2.66
Medium parameters used: $f = 1880$ MHz; $\sigma = 1.495$ S/m; $\epsilon_r = 53.915$; $\rho = 1000$ kg/m³ ;
Phantom section: Left Section

DASY5 Configuration:

- Probe: EX3DV4 - SN7329; ConvF(7.77, 7.77, 7.77); Calibrated: 2017/3/13;
- Sensor-Surface: 1.4mm (Mechanical Surface Detection)
- Electronics: DAE4 Sn772; Calibrated: 2017/10/9
- Phantom: Triple Flat Phantom 5.1C; Type: QD 000 P51 CA; Serial: 1130
- Measurement SW: DASY52, Version 52.8 (8);

Area Scan (131x41x1): Interpolated grid: dx=1.500 mm, dy=1.500 mm

Maximum value of SAR (interpolated) = 0.149 W/kg

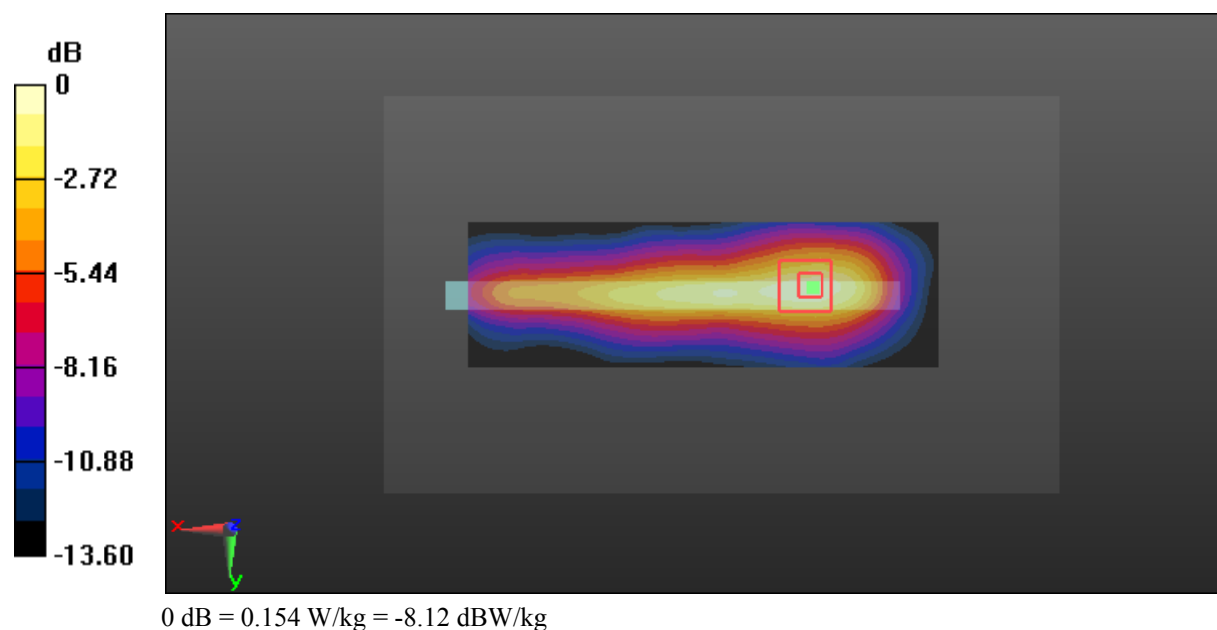
Zoom Scan (5x5x7)/Cube 0: Measurement grid: dx=8mm, dy=8mm, dz=5mm

Reference Value = 7.650 V/m; Power Drift = 0.07 dB

Peak SAR (extrapolated) = 0.185 W/kg

SAR(1 g) = 0.098 W/kg; SAR(10 g) = 0.055 W/kg

Maximum value of SAR (measured) = 0.154 W/kg



Test Plot 16#: GSM 1900_Body Bottom_Middle**DUT: E-Tab 3G; Type: DT0704K08; 17092701120**

Communication System: Generic GPRS-3 slots; Frequency: 1880 MHz; Duty Cycle: 1:2.66
Medium parameters used: $f = 1880$ MHz; $\sigma = 1.495$ S/m; $\epsilon_r = 53.915$; $\rho = 1000$ kg/m³ ;
Phantom section: Left Section

DASY5 Configuration:

- Probe: EX3DV4 - SN7329; ConvF(7.77, 7.77, 7.77); Calibrated: 2017/3/13;
- Sensor-Surface: 1.4mm (Mechanical Surface Detection)
- Electronics: DAE4 Sn772; Calibrated: 2017/10/9
- Phantom: Triple Flat Phantom 5.1C; Type: QD 000 P51 CA; Serial: 1130
- Measurement SW: DASY52, Version 52.8 (8);

Area Scan (101x41x1): Interpolated grid: dx=1.500 mm, dy=1.500 mm

Maximum value of SAR (interpolated) = 0.415 W/kg

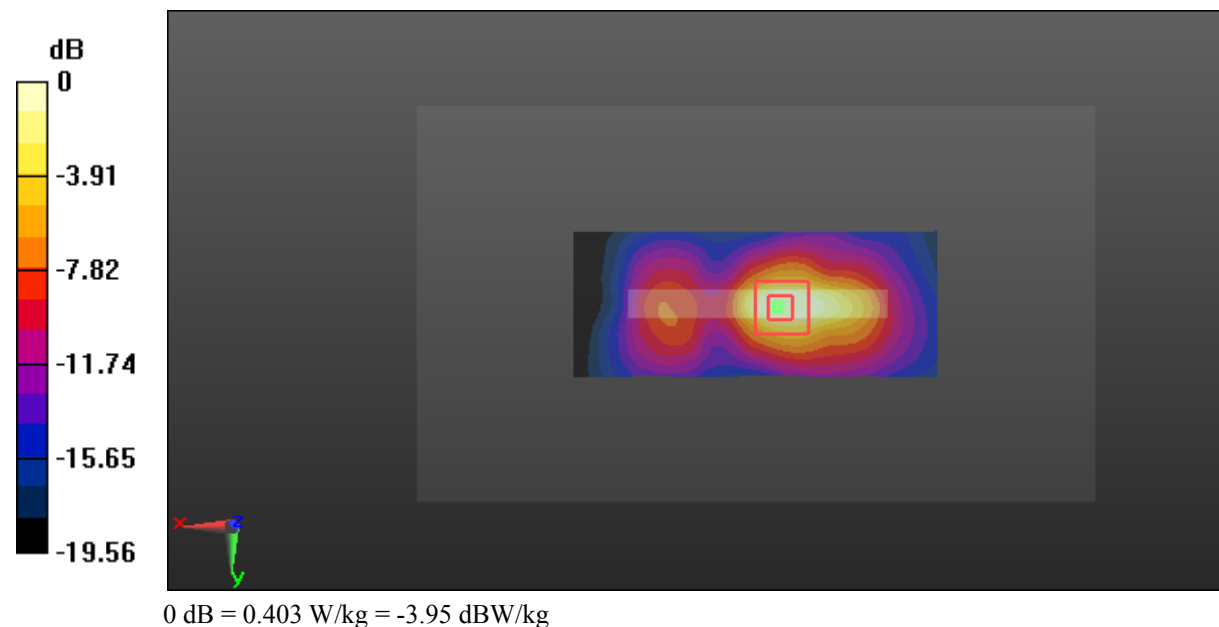
Zoom Scan (5x5x7)/Cube 0: Measurement grid: dx=8mm, dy=8mm, dz=5mm

Reference Value = 11.33 V/m; Power Drift = -0.03 dB

Peak SAR (extrapolated) = 0.517 W/kg

SAR(1 g) = 0.244 W/kg; SAR(10 g) = 0.115 W/kg

Maximum value of SAR (measured) = 0.403 W/kg



Test Plot 17#: WCDMA Band 2_Head Flat_Middle**DUT: E-Tab 3G; Type: DT0704K08; 17092701120**

Communication System: Generic WCDMA; Frequency: 1880 MHz; Duty Cycle: 1:1
Medium parameters used: $f = 1880$ MHz; $\sigma = 1.391$ S/m; $\epsilon_r = 40.315$; $\rho = 1000$ kg/m³ ;
Phantom section: Flat Section

DASY5 Configuration:

- Probe: EX3DV4 - SN7329; ConvF(8.18, 8.18, 8.18); Calibrated: 2017/3/13;
- Sensor-Surface: 1.4mm (Mechanical Surface Detection)
- Electronics: DAE4 Sn772; Calibrated: 2017/10/9
- Phantom: Triple Flat Phantom 5.1C; Type: QD 000 P51 CA; Serial: 1130
- Measurement SW: DASY52, Version 52.8 (8);

Area Scan (101x91x1): Interpolated grid: dx=1.500 mm, dy=1.500 mm

Maximum value of SAR (interpolated) = 0.257 W/kg

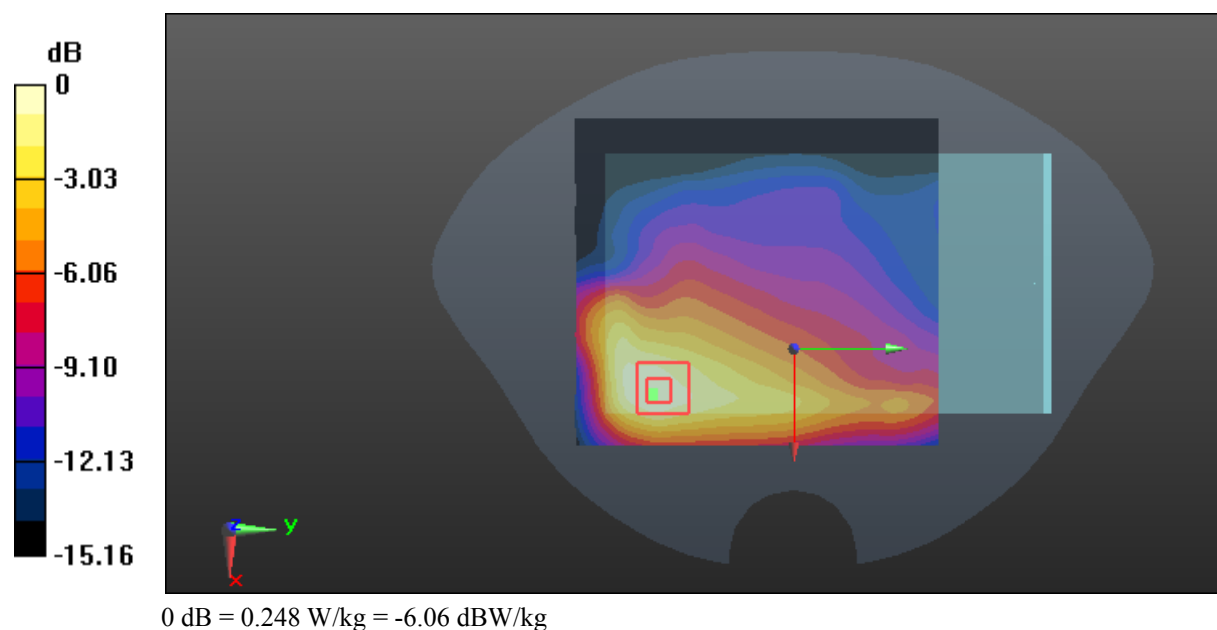
Zoom Scan (5x5x7)/Cube 0: Measurement grid: dx=8mm, dy=8mm, dz=5mm

Reference Value = 4.884 V/m; Power Drift = -0.18 dB

Peak SAR (extrapolated) = 0.292 W/kg

SAR(1 g) = 0.174 W/kg; SAR(10 g) = 0.102 W/kg

Maximum value of SAR (measured) = 0.248 W/kg



Test Plot 18#: WCDMA Band 2_Body Back_Middle**DUT: E-Tab 3G; Type: DT0704K08; 17092701120**

Communication System: Generic WCDMA; Frequency: 1880 MHz; Duty Cycle: 1:1
Medium parameters used: $f = 1880$ MHz; $\sigma = 1.495$ S/m; $\epsilon_r = 53.915$; $\rho = 1000$ kg/m³ ;
Phantom section: Left Section

DASY5 Configuration:

- Probe: EX3DV4 - SN7329; ConvF(7.77, 7.77, 7.77); Calibrated: 2017/3/13;
- Sensor-Surface: 1.4mm (Mechanical Surface Detection)
- Electronics: DAE4 Sn772; Calibrated: 2017/10/9
- Phantom: Triple Flat Phantom 5.1C; Type: QD 000 P51 CA; Serial: 1130
- Measurement SW: DASY52, Version 52.8 (8);

Area Scan (71x91x1): Interpolated grid: dx=1.500 mm, dy=1.500 mm

Maximum value of SAR (interpolated) = 1.14 W/kg

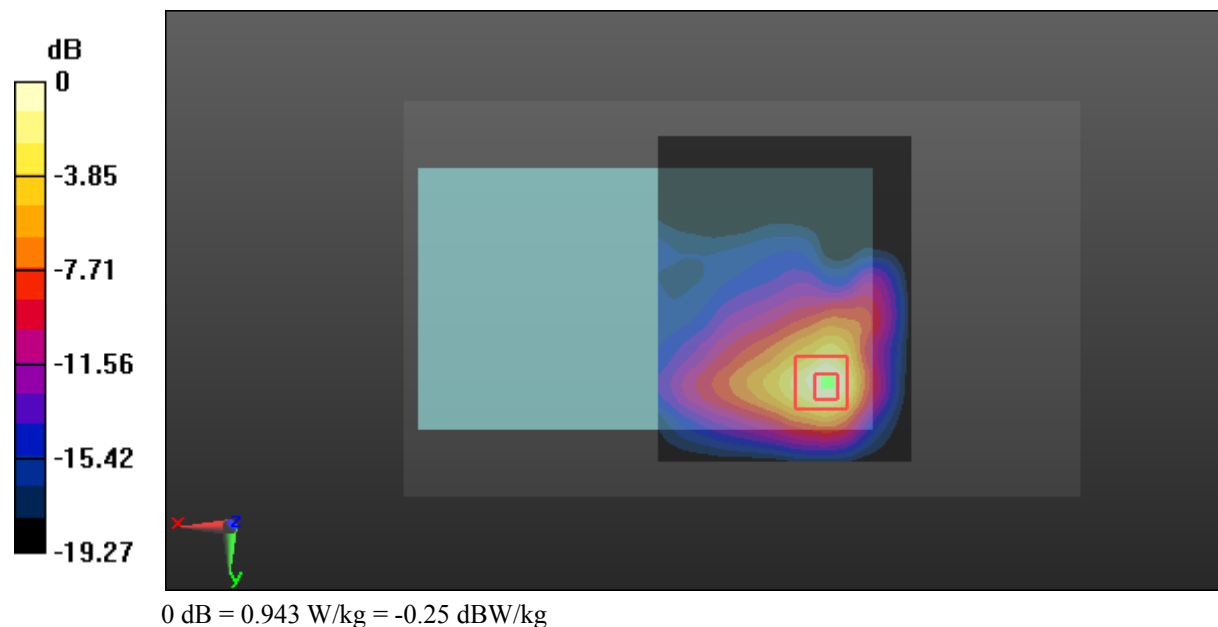
Zoom Scan (5x5x7)/Cube 0: Measurement grid: dx=8mm, dy=8mm, dz=5mm

Reference Value = 4.794 V/m; Power Drift = 0.11 dB

Peak SAR (extrapolated) = 1.17 W/kg

SAR(1 g) = 0.603 W/kg; SAR(10 g) = 0.299 W/kg

Maximum value of SAR (measured) = 0.943 W/kg



Test Plot 19#: WCDMA Band 2_Body Right_Middle**DUT: E-Tab 3G; Type: DT0704K08; 17092701120**

Communication System: Generic WCDMA; Frequency: 1880 MHz; Duty Cycle: 1:1
Medium parameters used: $f = 1880$ MHz; $\sigma = 1.495$ S/m; $\epsilon_r = 53.915$; $\rho = 1000$ kg/m³ ;
Phantom section: Left Section

DASY5 Configuration:

- Probe: EX3DV4 - SN7329; ConvF(7.77, 7.77, 7.77); Calibrated: 2017/3/13;
- Sensor-Surface: 1.4mm (Mechanical Surface Detection)
- Electronics: DAE4 Sn772; Calibrated: 2017/10/9
- Phantom: Triple Flat Phantom 5.1C; Type: QD 000 P51 CA; Serial: 1130
- Measurement SW: DASY52, Version 52.8 (8);

Area Scan (131x41x1): Interpolated grid: dx=1.500 mm, dy=1.500 mm

Maximum value of SAR (interpolated) = 0.226 W/kg

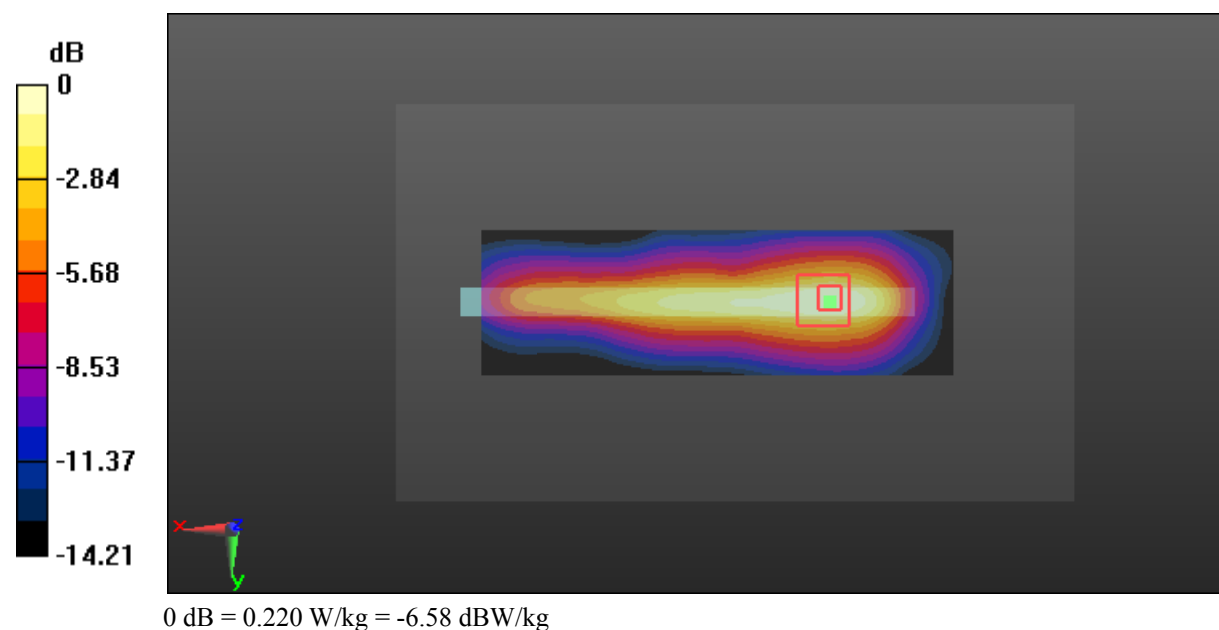
Zoom Scan (5x5x7)/Cube 0: Measurement grid: dx=8mm, dy=8mm, dz=5mm

Reference Value = 9.343 V/m; Power Drift = -0.05 dB

Peak SAR (extrapolated) = 0.263 W/kg

SAR(1 g) = 0.143 W/kg; SAR(10 g) = 0.079 W/kg

Maximum value of SAR (measured) = 0.220 W/kg



Test Plot 20#: WCDMA Band 2_Body Bottom_Middle**DUT: E-Tab 3G; Type: DT0704K08; 17092701120**

Communication System: Generic WCDMA; Frequency: 1880 MHz; Duty Cycle: 1:1
Medium parameters used: $f = 1880$ MHz; $\sigma = 1.495$ S/m; $\epsilon_r = 53.915$; $\rho = 1000$ kg/m³ ;
Phantom section: Left Section

DASY5 Configuration:

- Probe: EX3DV4 - SN7329; ConvF(7.77, 7.77, 7.77); Calibrated: 2017/3/13;
- Sensor-Surface: 1.4mm (Mechanical Surface Detection)
- Electronics: DAE4 Sn772; Calibrated: 2017/10/9
- Phantom: Triple Flat Phantom 5.1C; Type: QD 000 P51 CA; Serial: 1130
- Measurement SW: DASY52, Version 52.8 (8);

Area Scan (101x41x1): Interpolated grid: dx=1.500 mm, dy=1.500 mm

Maximum value of SAR (interpolated) = 0.575 W/kg

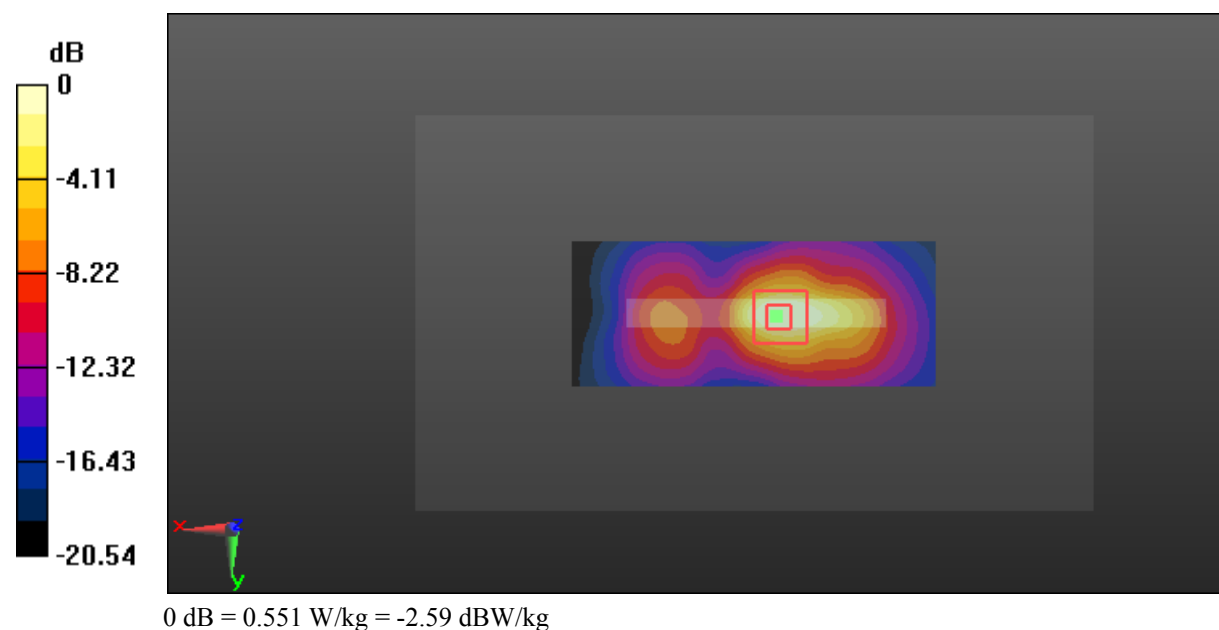
Zoom Scan (5x5x7)/Cube 0: Measurement grid: dx=8mm, dy=8mm, dz=5mm

Reference Value = 13.03 V/m; Power Drift = 0.13 dB

Peak SAR (extrapolated) = 0.708 W/kg

SAR(1 g) = 0.338 W/kg; SAR(10 g) = 0.158 W/kg

Maximum value of SAR (measured) = 0.551 W/kg



Test Plot 21#: WCDMA Band 5_Head Flat_Middle**DUT: E-Tab 3G; Type: DT0704K08; 17092701120**

Communication System: Generic WCDMA; Frequency: 836.6 MHz; Duty Cycle: 1:1
Medium parameters used: $f = 836.6$ MHz; $\sigma = 0.893$ S/m; $\epsilon_r = 41.713$; $\rho = 1000$ kg/m³ ;
Phantom section: Flat Section

DASY5 Configuration:

- Probe: EX3DV4 - SN7329; ConvF(9.36, 9.36, 9.36); Calibrated: 2017/3/13;
- Sensor-Surface: 1.4mm (Mechanical Surface Detection)
- Electronics: DAE4 Sn772; Calibrated: 2017/10/9
- Phantom: Triple Flat Phantom 5.1C; Type: QD 000 P51 CA; Serial: 1130
- Measurement SW: DASY52, Version 52.8 (8);

Area Scan (101x91x1): Interpolated grid: dx=1.500 mm, dy=1.500 mm

Maximum value of SAR (interpolated) = 0.237 W/kg

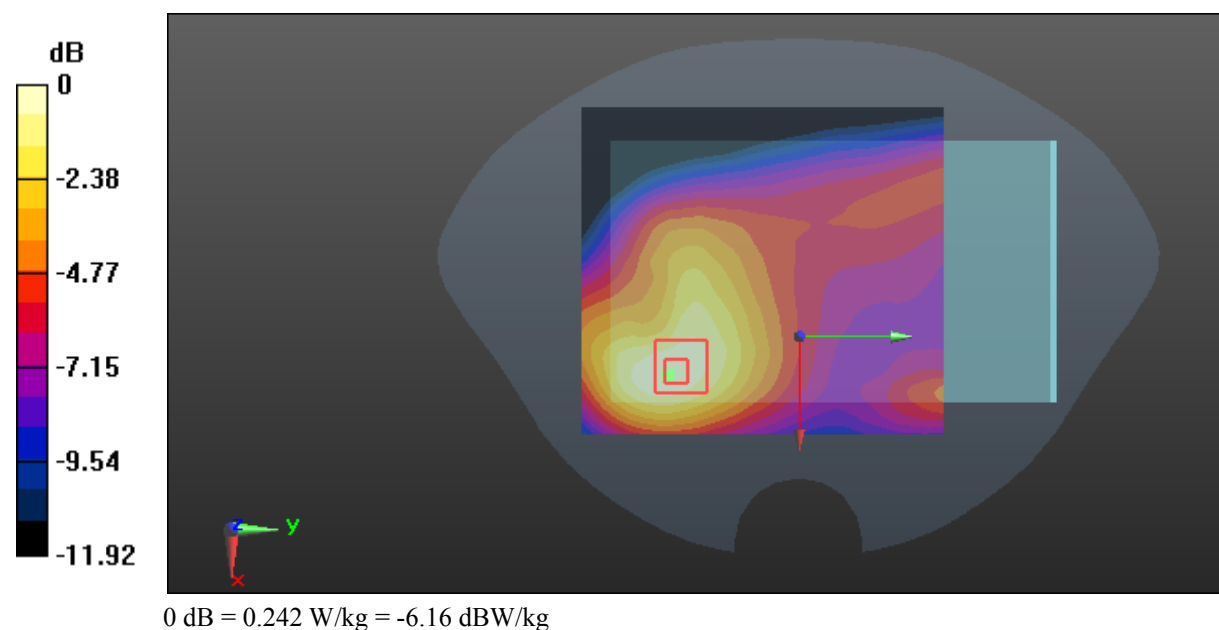
Zoom Scan (5x5x7)/Cube 0: Measurement grid: dx=8mm, dy=8mm, dz=5mm

Reference Value = 7.676 V/m; Power Drift = -0.01 dB

Peak SAR (extrapolated) = 0.277 W/kg

SAR(1 g) = 0.181 W/kg; SAR(10 g) = 0.120 W/kg

Maximum value of SAR (measured) = 0.242 W/kg



Test Plot 22#: WCDMA Band 5_Body Back_Low**DUT: E-Tab 3G; Type: DT0704K08; 17092701120**

Communication System: Generic WCDMA; Frequency: 826.4 MHz; Duty Cycle: 1:1
Medium parameters used: $f = 826.4$ MHz; $\sigma = 0.948$ S/m; $\epsilon_r = 56.436$; $\rho = 1000$ kg/m³ ;
Phantom section: Right Section

DASY5 Configuration:

- Probe: EX3DV4 - SN7329; ConvF(9.58, 9.58, 9.58); Calibrated: 2017/3/13;
- Sensor-Surface: 1.4mm (Mechanical Surface Detection)
- Electronics: DAE4 Sn772; Calibrated: 2017/10/9
- Phantom: Triple Flat Phantom 5.1C; Type: QD 000 P51 CA; Serial: 1130
- Measurement SW: DASY52, Version 52.8 (8);

Area Scan (71x91x1): Interpolated grid: dx=1.500 mm, dy=1.500 mm

Maximum value of SAR (interpolated) = 1.35 W/kg

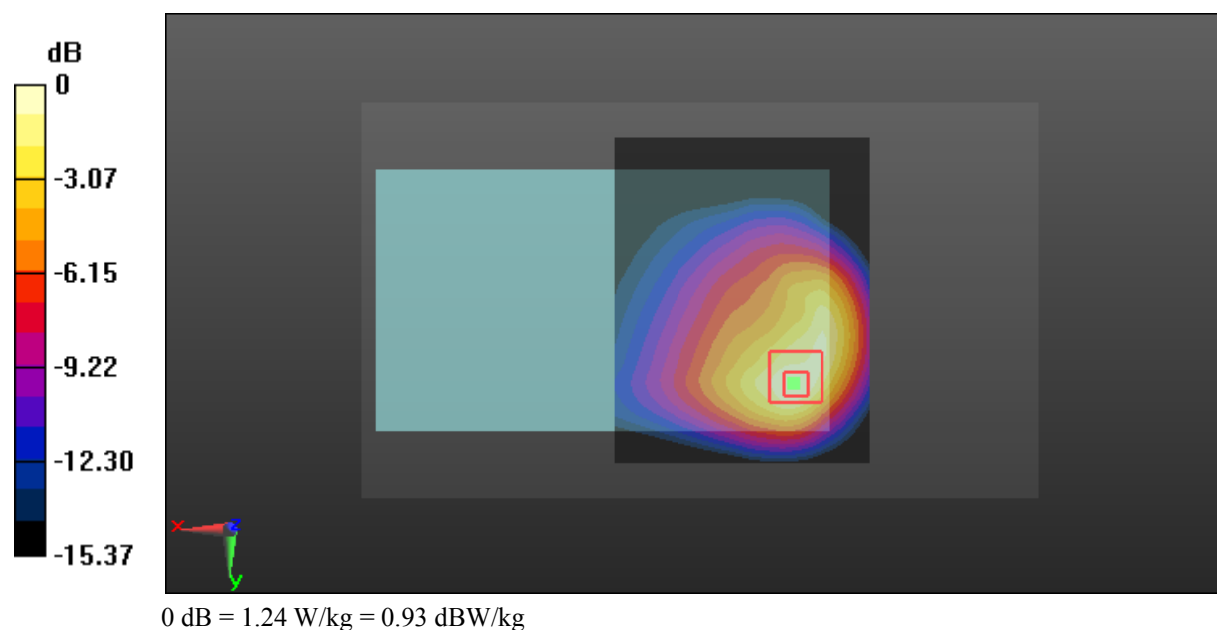
Zoom Scan (5x5x7)/Cube 0: Measurement grid: dx=8mm, dy=8mm, dz=5mm

Reference Value = 12.59 V/m; Power Drift = 0.15 dB

Peak SAR (extrapolated) = 1.53 W/kg

SAR(1 g) = 0.830 W/kg; SAR(10 g) = 0.484 W/kg

Maximum value of SAR (measured) = 1.24 W/kg



Test Plot 23#: WCDMA Band 5_Body Back_Middle**DUT: E-Tab 3G; Type: DT0704K08; 17092701120**

Communication System: Generic WCDMA; Frequency: 836.6 MHz; Duty Cycle: 1:1
Medium parameters used: $f = 836.6$ MHz; $\sigma = 0.963$ S/m; $\epsilon_r = 56.71$; $\rho = 1000$ kg/m³ ;
Phantom section: Right Section

DASY5 Configuration:

- Probe: EX3DV4 - SN7329; ConvF(9.58, 9.58, 9.58); Calibrated: 2017/3/13;
- Sensor-Surface: 1.4mm (Mechanical Surface Detection)
- Electronics: DAE4 Sn772; Calibrated: 2017/10/9
- Phantom: Triple Flat Phantom 5.1C; Type: QD 000 P51 CA; Serial: 1130
- Measurement SW: DASY52, Version 52.8 (8);

Area Scan (71x91x1): Interpolated grid: dx=1.500 mm, dy=1.500 mm

Maximum value of SAR (interpolated) = 1.24 W/kg

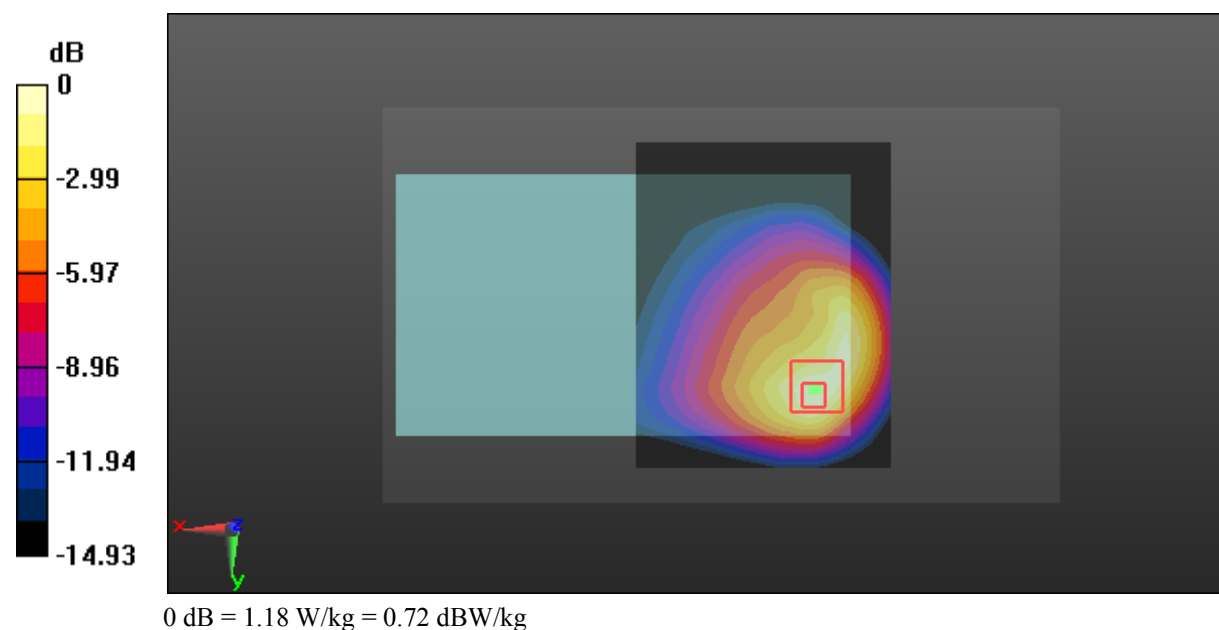
Zoom Scan (5x5x7)/Cube 0: Measurement grid: dx=8mm, dy=8mm, dz=5mm

Reference Value = 12.48 V/m; Power Drift = 0.10 dB

Peak SAR (extrapolated) = 1.49 W/kg

SAR(1 g) = 0.781 W/kg; SAR(10 g) = 0.456 W/kg

Maximum value of SAR (measured) = 1.18 W/kg



Test Plot 24#: WCDMA Band 5_Body Back_High**DUT: E-Tab 3G; Type: DT0704K08; 17092701120**

Communication System: Generic WCDMA; Frequency: 846.6 MHz; Duty Cycle: 1:1
Medium parameters used: $f = 846.6$ MHz; $\sigma = 0.968$ S/m; $\epsilon_r = 56.904$; $\rho = 1000$ kg/m³ ;
Phantom section: Right Section

DASY5 Configuration:

- Probe: EX3DV4 - SN7329; ConvF(9.58, 9.58, 9.58); Calibrated: 2017/3/13;
- Sensor-Surface: 1.4mm (Mechanical Surface Detection)
- Electronics: DAE4 Sn772; Calibrated: 2017/10/9
- Phantom: Triple Flat Phantom 5.1C; Type: QD 000 P51 CA; Serial: 1130
- Measurement SW: DASY52, Version 52.8 (8);

Area Scan (71x91x1): Interpolated grid: dx=1.500 mm, dy=1.500 mm

Maximum value of SAR (interpolated) = 1.54 W/kg

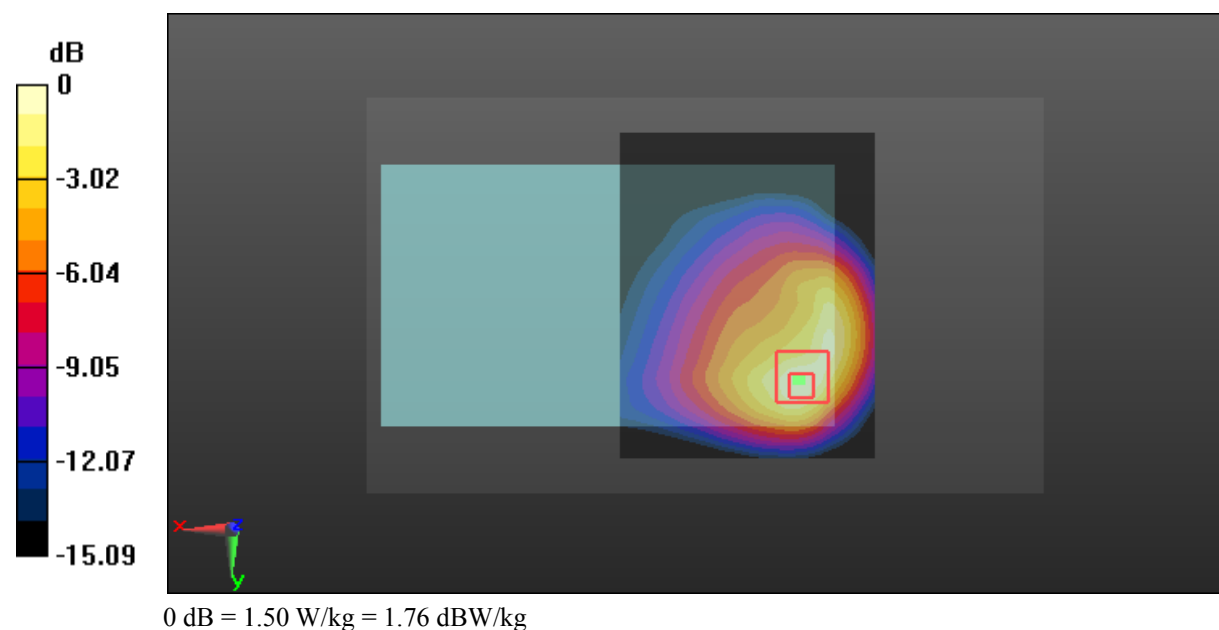
Zoom Scan (5x5x7)/Cube 0: Measurement grid: dx=8mm, dy=8mm, dz=5mm

Reference Value = 13.81 V/m; Power Drift = 0.06 dB

Peak SAR (extrapolated) = 1.91 W/kg

SAR(1 g) = 0.987 W/kg; SAR(10 g) = 0.574 W/kg

Maximum value of SAR (measured) = 1.50 W/kg



Test Plot 25#: WCDMA Band 5_Body Right_Middle**DUT: E-Tab 3G; Type: DT0704K08; 17092701120**

Communication System: Generic WCDMA; Frequency: 836.6 MHz; Duty Cycle: 1:1
Medium parameters used: $f = 836.6$ MHz; $\sigma = 0.963$ S/m; $\epsilon_r = 56.71$; $\rho = 1000$ kg/m³ ;
Phantom section: Right Section

DASY5 Configuration:

- Probe: EX3DV4 - SN7329; ConvF(9.58, 9.58, 9.58); Calibrated: 2017/3/13;
- Sensor-Surface: 1.4mm (Mechanical Surface Detection)
- Electronics: DAE4 Sn772; Calibrated: 2017/10/9
- Phantom: Triple Flat Phantom 5.1C; Type: QD 000 P51 CA; Serial: 1130
- Measurement SW: DASY52, Version 52.8 (8);

Area Scan (131x41x1): Interpolated grid: dx=1.500 mm, dy=1.500 mm

Maximum value of SAR (interpolated) = 0.221 W/kg

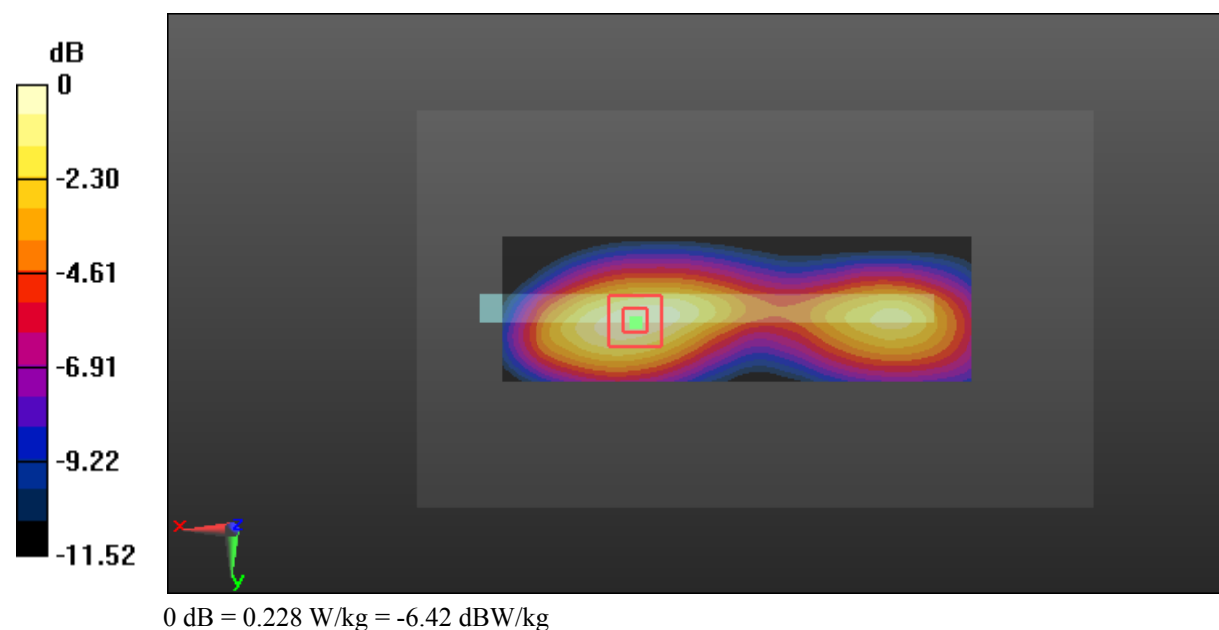
Zoom Scan (5x5x7)/Cube 0: Measurement grid: dx=8mm, dy=8mm, dz=5mm

Reference Value = 8.450 V/m; Power Drift = 0.01 dB

Peak SAR (extrapolated) = 0.267 W/kg

SAR(1 g) = 0.161 W/kg; SAR(10 g) = 0.102 W/kg

Maximum value of SAR (measured) = 0.228 W/kg



Test Plot 26#: WCDMA Band 5_Body Bottom_Low**DUT: E-Tab 3G; Type: DT0704K08; 17092701120**

Communication System: Generic WCDMA; Frequency: 826.4 MHz; Duty Cycle: 1:1
Medium parameters used: $f = 826.4$ MHz; $\sigma = 0.948$ S/m; $\epsilon_r = 56.436$; $\rho = 1000$ kg/m³ ;
Phantom section: Right Section

DASY5 Configuration:

- Probe: EX3DV4 - SN7329; ConvF(9.58, 9.58, 9.58); Calibrated: 2017/3/13;
- Sensor-Surface: 1.4mm (Mechanical Surface Detection)
- Electronics: DAE4 Sn772; Calibrated: 2017/10/9
- Phantom: Triple Flat Phantom 5.1C; Type: QD 000 P51 CA; Serial: 1130
- Measurement SW: DASY52, Version 52.8 (8);

Area Scan (101x41x1): Interpolated grid: dx=1.500 mm, dy=1.500 mm

Maximum value of SAR (interpolated) = 0.742 W/kg

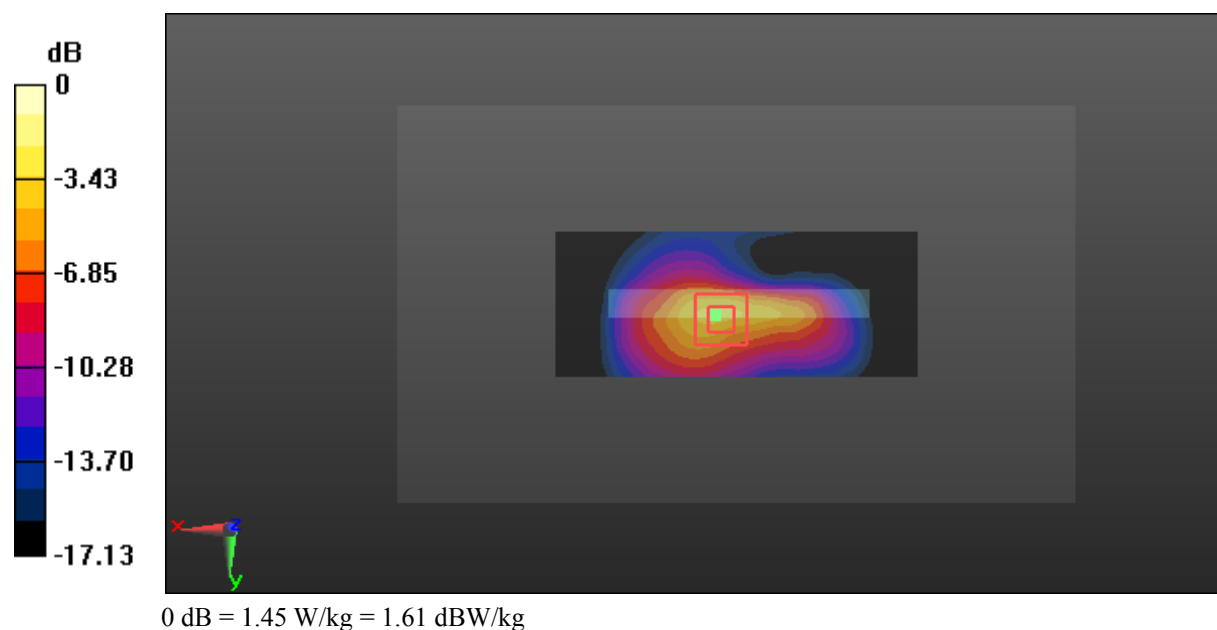
Zoom Scan (5x5x7)/Cube 0: Measurement grid: dx=8mm, dy=8mm, dz=5mm

Reference Value = 21.17 V/m; Power Drift = -0.11 dB

Peak SAR (extrapolated) = 1.90 W/kg

SAR(1 g) = 0.712 W/kg; SAR(10 g) = 0.339 W/kg

Maximum value of SAR (measured) = 1.45 W/kg



Test Plot 27#: WCDMA Band 5_Body Bottom_Middle**DUT: E-Tab 3G; Type: DT0704K08; 17092701120**

Communication System: Generic WCDMA; Frequency: 836.6 MHz; Duty Cycle: 1:1
Medium parameters used: $f = 836.6$ MHz; $\sigma = 0.963$ S/m; $\epsilon_r = 56.71$; $\rho = 1000$ kg/m³ ;
Phantom section: Right Section

DASY5 Configuration:

- Probe: EX3DV4 - SN7329; ConvF(9.58, 9.58, 9.58); Calibrated: 2017/3/13;
- Sensor-Surface: 1.4mm (Mechanical Surface Detection)
- Electronics: DAE4 Sn772; Calibrated: 2017/10/9
- Phantom: Triple Flat Phantom 5.1C; Type: QD 000 P51 CA; Serial: 1130
- Measurement SW: DASY52, Version 52.8 (8);

Area Scan (101x41x1): Interpolated grid: dx=1.500 mm, dy=1.500 mm

Maximum value of SAR (interpolated) = 1.07 W/kg

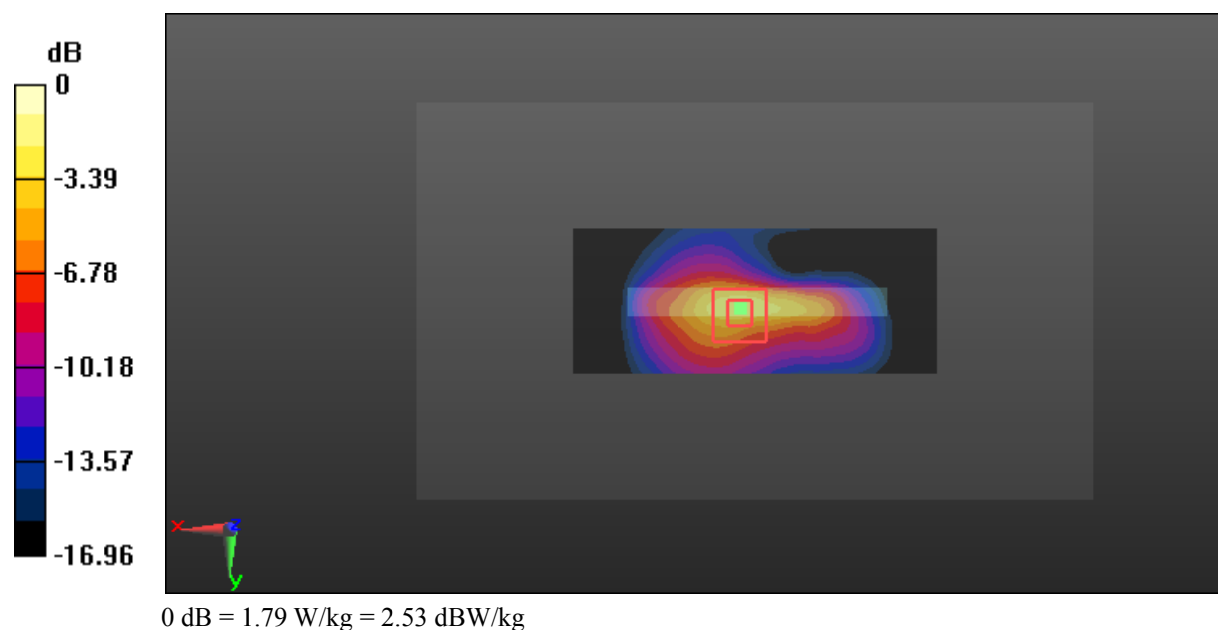
Zoom Scan (5x5x7)/Cube 0: Measurement grid: dx=8mm, dy=8mm, dz=5mm

Reference Value = 25.48 V/m; Power Drift = -0.19 dB

Peak SAR (extrapolated) = 2.37 W/kg

SAR(1 g) = 0.862 W/kg; SAR(10 g) = 0.411 W/kg

Maximum value of SAR (measured) = 1.79 W/kg



Test Plot 28#: WCDMA Band 5_Body Bottom_High**DUT: E-Tab 3G; Type: DT0704K08; 17092701120**

Communication System: Generic WCDMA; Frequency: 846.6 MHz; Duty Cycle: 1:1
Medium parameters used: $f = 846.6$ MHz; $\sigma = 0.968$ S/m; $\epsilon_r = 56.904$; $\rho = 1000$ kg/m³ ;
Phantom section: Right Section

DASY5 Configuration:

- Probe: EX3DV4 - SN7329; ConvF(9.58, 9.58, 9.58); Calibrated: 2017/3/13;
- Sensor-Surface: 1.4mm (Mechanical Surface Detection)
- Electronics: DAE4 Sn772; Calibrated: 2017/10/9
- Phantom: Triple Flat Phantom 5.1C; Type: QD 000 P51 CA; Serial: 1130
- Measurement SW: DASY52, Version 52.8 (8);

Area Scan (101x41x1): Interpolated grid: dx=1.500 mm, dy=1.500 mm

Maximum value of SAR (interpolated) = 0.799 W/kg

Zoom Scan (5x5x7)/Cube 0: Measurement grid: dx=8mm, dy=8mm, dz=5mm

Reference Value = 22.07 V/m; Power Drift = -0.10 dB

Peak SAR (extrapolated) = 1.95 W/kg

SAR(1 g) = 0.754 W/kg; SAR(10 g) = 0.363 W/kg

Maximum value of SAR (measured) = 1.49 W/kg

