

SDZ2100 WSN Smoke Instruction Manual

【Preface】 SDZ2100 is a WSN Wireless intelligent home system

link to check the smoke caused by burning, but not sense gas, heat or flame. When fire smoke alert concentration, alerts that signal to reach the fire alarm function, and provide sufficient time to warn personnel evacuation actions in the House, to ensure people's safety. Smoke only in accordance with our instructions for use manual of recommendations, installation and maintenance methods to determine the function of (Smoke alarms/ Silent mode/ Weak warning/ test function). Wanted to buy gas and carbon monoxide alarms, please contact us.

Precautions : The Smoke is not for non-residential buildings, such as warehouses, factories, malls and so on, these establishments must install special fire detection and warning system ◦

一、Installation Smoke :

- (1) Installation of Smoke under the United States National Fire Protection Association standard 74th on the fly. For complete detection of effects, each room in the House, living room, storage rooms, basements and mezzanines, are required to install Smoke, at least on each floor are the installation requirements installation of a Smoke and each bedroom a Smoke device, here are some points for your reference:
- (2) In the aisle between two different bedroom required the installation of a Smoke.
- (3) Two-floor buildings, refer to (Figure 1 & 2) install the Smoke.

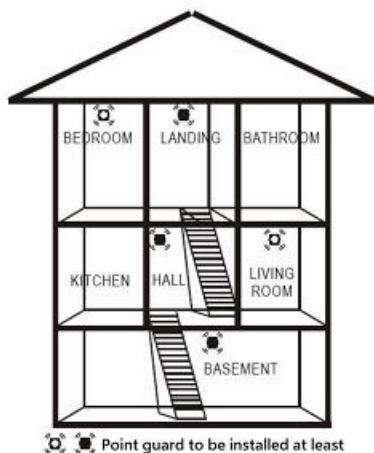
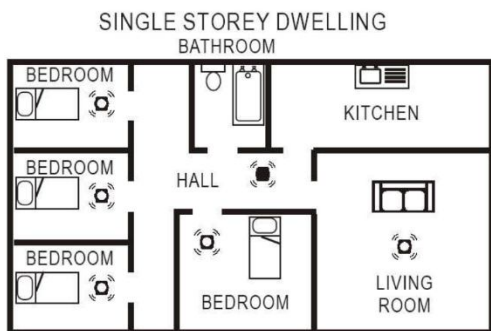


Figure 1
 MAXIMUM PROTECTION
 MINIMUM PROTECTION



MAXIMUM PROTECTION
 MINIMUM PROTECTION

- (4) Each family should be installed at least two Smoke.
- (5) Within each room are required to install a Smoke.

2、Wireless Smoke and wireless systems

New device enters pairing mode at transmission, this match must be

applied in order to maintain a good smooth signals next to the Gateway is paired. When you install the Smoke, technicians on the detector will be paired with WSN Gateway setting, then the detector is automatically with the corresponding Gateway online. When the smoke and the Smoke started their alert at the same time, WSN launched wireless intelligent home systems also receive alerts WSN home alarms (SRZ2100).

3、Improper installation of Smoke

- (1) Because burning smoke particles that can cause Smoke alert action, so don't install the Smoke in poorly ventilated kitchens, garages, fireplaces, water heaters and furnaces.
- (2) Install the Smoke should be avoided more than 6 metres from the above location. If we do not meet these requirements, you should try to choose the installation location of little contact with the burned micro-particles, and maintaining good ventilation.
- (4) Do not install the Smoke in the operating temperature range (-10 °C ~ 50 °C) outside the environment.
- (6) Do not install Smoke dust-intensive sites, otherwise it will affect the sensitivity of the Smoke and cause a false report, and may plug the stainless steel strainer.
- (7) Do not install in ventilation clear environment, such as air conditioners, fans, ventilation near the road, or take smoke into the Smoke of fires caused by the airflow is not easy.
- (8) Pitched roofs, and ceilings on the top floor, and wall junction, often air stagnation, is not easy to measure the smoke. See Figure 3 indicates the correct installation location.

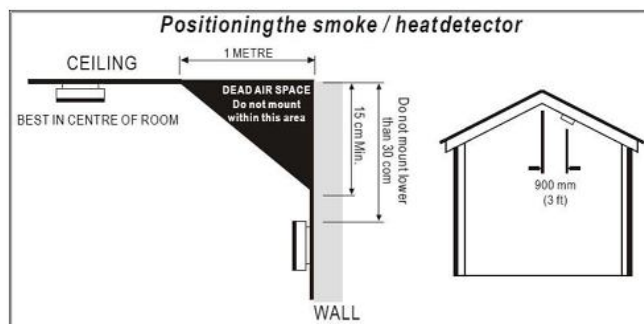


Figure 3

4、Smoke Function

Model: approximately every 32 seconds, the red LED flashes 1 time.

Smoke alarms: Smoke will still beep 3 sound and the red LED will Flash sequentially. WSN wireless intelligent home system will also start.

Silent mode: when the Smoke the fire alarm, press the test button you will enter the mute State for about 10 minutes, and the red LED will Flash sequentially, automatically mute after 10 minutes. When mute after the termination if Smoke is still detected fire alarms, the Smoke will once again issued an alert.

Weak warning: when the Smoke is about every 32 seconds a short beep sound, and the yellow LED flashes once, says low battery, Smoke can still be normal operation for about 30 days, but must immediately replace the battery, replace with new batteries may only be lifted after weak warning. Wireless intelligent home systems appears weak in WSN reminder.

Age warning: when the Smoke after a certain number of years of use, Smoke will start aging, Smoke about every 32 seconds a short beep sound, and the yellow LED blinks 2 times per minute for at least, at this point is Smoke aging, please replace Smoke.

This test function: this feature is hardware detection Smoke features and smoke detection function is normal, just press the test button for about 4 seconds, let go, will be entering the smoke alarm test, that is, continuous beep sound 3, and the red LED will Flash sequentially, this time also will detect the hardware function is abnormal.

Abnormal warning: If the Smoke about every minute short beep sound 1, and the yellow LED blinks 3 times, which indicate a problem with Smoke, and needed immediate repair maintenance at once.

5、One year warranty description

The wireless alarms are available on a year, and the customer under normal conditions of use, sensor component provides one-year maintenance guarantee and other material or manufacturing defects, repair or replacement of parts of the service. Customer misuse, damage,

replaceable materials shall not be liable for, and customers using the products, their other tangible or intangible loss arising, nor take any responsibility.

6 · Installation steps (recommended by a professional technician)

- (1) Draw a 15 cm long at the ready to install the horizontal line
- (2) Unscrew counterclockwise Smoke fixed base
- (3) Fixed two large holes align horizontal line marks the position of the screws
- (4) Using an electric drill (5mm bits) to drill a hole and buried in two plastic nails (Gecko)
- (5) Lock the screws to fix the base
- (6) Align the Smoke installation well fixed base, yield to clockwise, combined with the Smoke as a whole. Try to Smoke in order to make sure it is installed properly.

7 · Smoke Specification

Induction type: photoelectric detection of smoke

Smoke detection sensitivity: UL217 (factory default)

Power supply: 1.5V two AA alkaline batteries (normal standby mode, uses about 18 months)

Built-in alarm sound mode: UL

Working temperature: -40 ° c ~85 ° c

Operating humidity: 0~95%

Interface: IEEE802.15.4

Frequency Range: 2.4-2.483GHz

Transmission Speed: 250Kbps

Transmission Power: 18dBm (Default)

Transmission Range: 150M (Line of Sight)

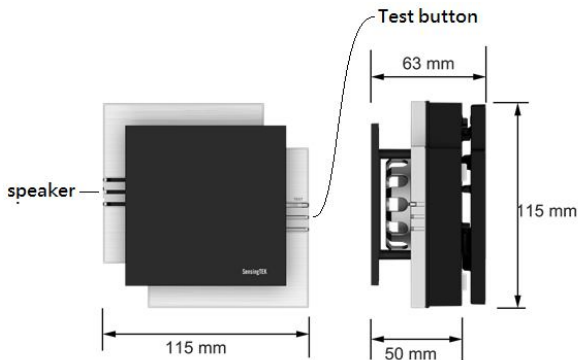
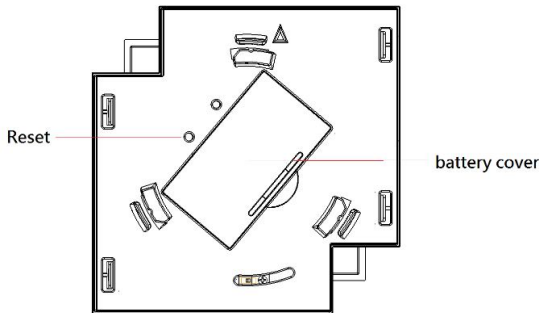
Sensitivity: -95dBm

Size: 114mm*114mm*63mm

8 · Zigbee reset connecting Gateway :

Pairing has to be replaced, you will need to open the body back panel base, locate the battery place the top button, and continue to press the button for three seconds, the product will enter the pairing search and automatic pairing mode, this pairing is a Gateway connecting the power for two minutes before they can match ·

This device is Fixed installation, so the minimum distance from body is 20cm



This device complies with part 15 of the FCC Rules.

Operation is subject to the following two conditions: (1)

This device may not cause harmful interference, and (2)

this device must accept any interference received,

including interference that may cause undesired

operation.

Any Changes or modifications not expressly approved

by the party responsible for compliance could void the

user's authority to operate the equipment.

Note: This equipment has been tested and found to

comply with the limits for a Class B digital device,

pursuant to part 15 of the FCC Rules. These limits are

designed to provide reasonable protection against

harmful interference in a residential installation. This

equipment generates uses and can radiate radio

frequency energy and, if not installed and used in

accordance with the instructions, may cause harmful

interference to radio communications. However, there is

no guarantee that interference will not occur in a

particular installation. If this equipment does cause

harmful interference to radio or television reception,

which can be determined by turning the equipment off

and on, the user is encouraged to try to correct the

interference by one or more of the following measures:

-Reorient or relocate the receiving antenna.

-Increase the separation between the equipment and

receiver.

-Connect the equipment into an outlet on a circuit

different from that to which the receiver is connected.

-Consult the dealer or an experienced radio/TV

technician for help.