



TEST REPORT

FCC PART 15.249

Report Reference No.: **CTL1606072102-WF**

Compiled by: (position+printed name+signature)	Jacky Chen (File administrators)	<u>Jacky Chen</u>
Tested by: (position+printed name+signature)	Allen Wang (Test Engineer)	<u>Allen Wang</u>
Approved by: (position+printed name+signature)	Tracy Qi (Manager)	<u>Tracy Qi</u>

Product Name.....: wireless barcode scanner

Model/Type reference: XB-5066R

List Model(s).....: See next page

Trade Mark: SYBLE

FCC ID.....: 2AE2UXB-50566R

Applicant's name.....: **Guangzhou Xunbao Electronics Technology CO., LTD**

Address of applicant.....: Floor 2, Building 13, Bigang Industrial Park, East Area, Economic And Technological Development Zone, Luogang Dist., Guangzhou, Guangdong, China (Mainland)

Test Firm.....: **Shenzhen CTL Testing Technology Co., Ltd.**

Address of Test Firm.....: Floor 1-A, Baisha Technology Park, No.3011, Shaheqi Road, Nanshan District, Shenzhen, China 518055

Test specification.....:

Standard.....: **FCC Part 15.249**:Operation within the bands 920-928 MHz, 2400-2483.5 MHz, 5725-5850 MHz and 24.0 - 24.25 GHz.

TRF Originator.....: Shenzhen CTL Testing Technology Co., Ltd.

Master TRF.....: Dated 2011-01

Date of Receipt.....: Jun. 20 2016

Date of Test Date.....: Jun. 21, 2016 –Jun. 27, 2016

Data of Issue.....: Jun. 28, 2016

Result.....: Pass

Shenzhen CTL Testing Technology Co., Ltd. All rights reserved.

This publication may be reproduced in whole or in part for non-commercial purposes as long as the Shenzhen CTL Testing Technology Co., Ltd. is acknowledged as copyright owner and source of the material. Shenzhen CTL Testing Technology Co., Ltd. takes no responsibility for and will not assume liability for damages resulting from the reader's interpretation of the reproduced material due to its placement and context.

TEST REPORT

Test Report No. :	CTL1606072102-WF	Jun. 28, 2016 ----- Date of issue
--------------------------	-------------------------	---

Equipment under Test : wireless barcode scanner

Model /Type : XB-5066R

Listed Models : XB-5055R, XB-5066RT, XB-5088R, XB-5099R,
XB-6266B, XB-6266BT, XB-6277B, XB-6288B,
XB-5058R

Applicant : **Guangzhou Xunbao Electronics Technology CO., LTD**

Address : Floor 2, Building 13, Bigang Industrial Park, East Area, Economic And Technological Development Zone, Luogang Dist., Guangzhou, Guangdong, China (Mainland)

Manufacturer : **Guangzhou Xunbao Electronics Technology CO., LTD**

Address : Floor 2, Building 13, Bigang Industrial Park, East Area, Economic And Technological Development Zone, Luogang Dist., Guangzhou, Guangdong, China (Mainland)

Test result	Pass *
--------------------	---------------

* In the configuration tested, the EUT complied with the standards specified page 5.

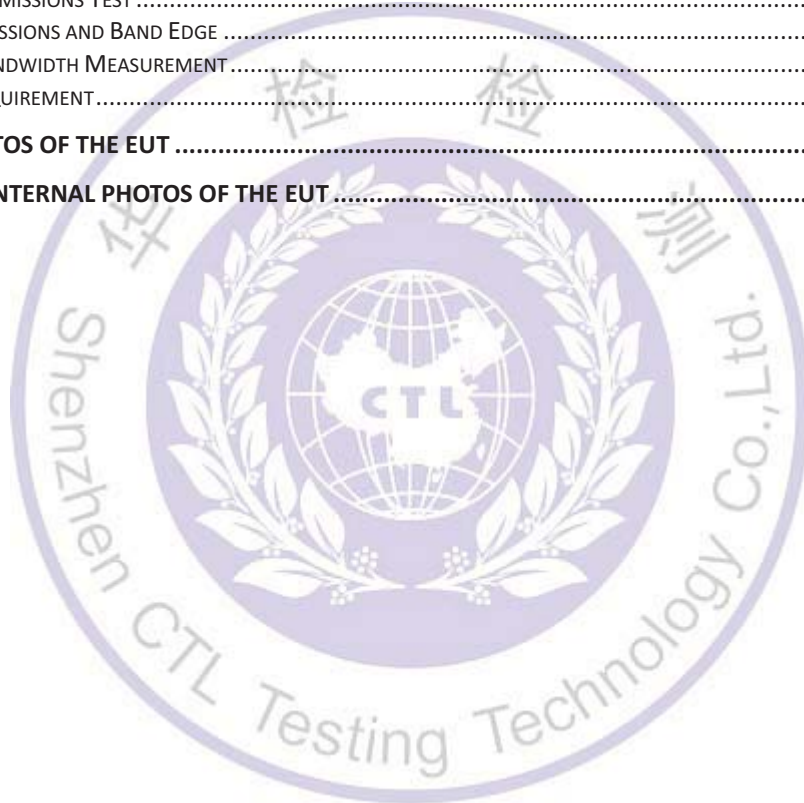
The test report merely corresponds to the test sample.

It is not permitted to copy extracts of these test result without the written permission of the test laboratory.

Table of Contents

Page

- 1. SUMMARY..... 5
 - 1.1. TEST STANDARDS.....5
 - 1.2. TEST DESCRIPTION.....5
 - 1.3. TEST FACILITY6
 - 1.4. STATEMENT OF THE MEASUREMENT UNCERTAINTY.....6
- 2. GENERAL INFORMATION..... 7
 - 2.1. ENVIRONMENTAL CONDITIONS7
 - 2.2. GENERAL DESCRIPTION OF EUT7
 - 2.3. DESCRIPTION OF TEST MODES AND TEST FREQUENCY.....7
 - 2.4. EQUIPMENTS USED DURING THE TEST8
 - 2.5. RELATED SUBMITTAL(s) / GRANT(s).....8
 - 2.6. MODIFICATIONS.....8
- 3. TEST CONDITIONS AND RESULTS 9
 - 3.1. CONDUCTED EMISSIONS TEST9
 - 3.2. RADIATED EMISSIONS AND BAND EDGE12
 - 3.3. OCCUPIED BANDWIDTH MEASUREMENT18
 - 3.4. ANTENNA REQUIREMENT20
- 4. TEST SETUP PHOTOS OF THE EUT 21
- 5. EXTERNAL AND INTERNAL PHOTOS OF THE EUT 23



1. SUMMARY

1.1. TEST STANDARDS

The tests were performed according to following standards:

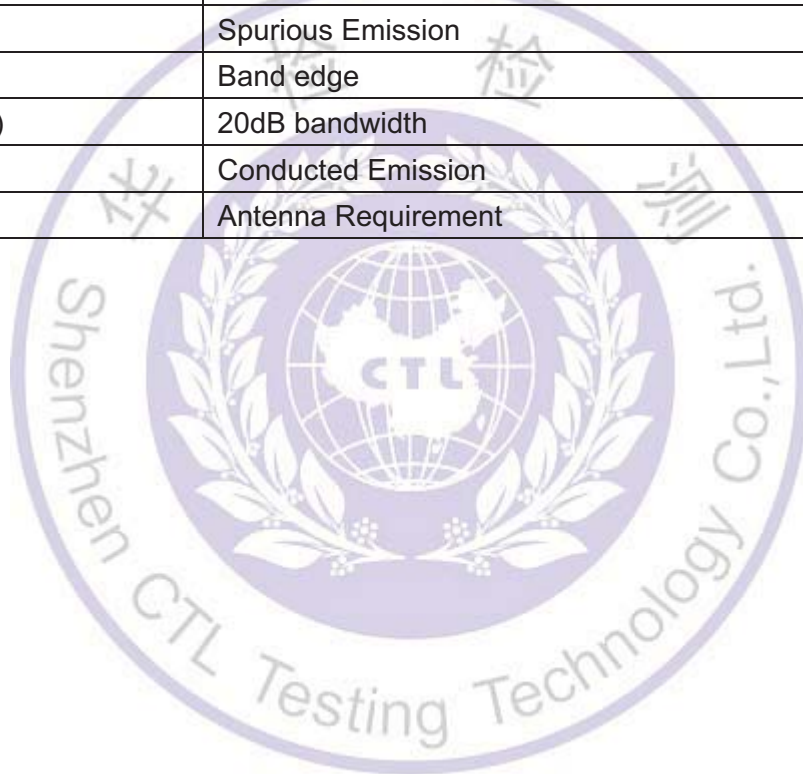
FCC Rules Part 15.249: Operation within the bands 902 - 928 MHz, 2400 - 2483.5 MHz, 5725 - 5875 MHz, and 24.0 - 24.25 GHz.

ANSI C63.10:2013 : American National Standard for Testing Unlicensed Wireless Devices

ANSI C63.4: 2014: –American National Standard for Methods of Measurement of Radio-Noise Emissions from Low-Voltage Electrical and Electronic Equipment in the Range of 9 kHz to 40GHz
Range of 9 kHz to 40GHz

1.2. Test Description

FCC PART 15.249		
FCC Part 15.249(a)	Field Strength of Fundamental	PASS
FCC Part 15.209	Spurious Emission	PASS
FCC Part 15.209	Band edge	PASS
FCC Part 15.215(c)	20dB bandwidth	PASS
FCC Part 15.207	Conducted Emission	PASS
FCC Part 15.203	Antenna Requirement	PASS



1.3. Test Facility

1.3.1 Address of the test laboratory

Shenzhen CTL Testing Technology Co., Ltd.

Floor 1-A, Baisha Technology Park, No. 3011, Shahexi Road, Nanshan, Shenzhen 518055 China

There is one 3m semi-anechoic chamber and two line conducted labs for final test. The Test Sites meet the requirements in documents ANSI C63.4 and CISPR 22/EN 55022 requirements.

1.3.2 Laboratory accreditation

The test facility is recognized, certified, or accredited by the following organizations:

IC Registration No.: 9618B

The 3m alternate test site of Shenzhen CTL Testing Technology Co., Ltd. EMC Laboratory has been registered by Certification and Engineer Bureau of Industry Canada for the performance of with Registration No.: 9618B on November 13, 2013.

FCC-Registration No.: 970318

Shenzhen CTL Testing Technology Co., Ltd. EMC Laboratory has been registered and fully described in a report filed with the (FCC) Federal Communications Commission. The acceptance letter from the FCC is maintained in our files. Registration 970318, December 19, 2013.

1.4. Statement of the measurement uncertainty

The data and results referenced in this document are true and accurate. The reader is cautioned that there may be errors within the calibration limits of the equipment and facilities. The measurement uncertainty was calculated for all measurements listed in this test report acc. to CISPR 16 - 4 „Specification for radio disturbance and immunity measuring apparatus and methods – Part 4: Uncertainty in EMC Measurements“ and is documented in the Shenzhen CTL Testing Technology Co., Ltd. quality system acc. to DIN EN ISO/IEC 17025. Furthermore, component and process variability of devices similar to that tested may result in additional deviation. The manufacturer has the sole responsibility of continued compliance of the device.

Hereafter the best measurement capability for CTL laboratory is reported:

Test	Range	Measurement Uncertainty	Notes
Radiated Emission	30~1000MHz	4.10dB	(1)
Radiated Emission	Above 1GHz	4.32dB	(1)
Conducted Disturbance	0.15~30MHz	3.20dB	(1)

(1) This uncertainty represents an expanded uncertainty expressed at approximately the 95% confidence level using a coverage factor of k=2.

2. GENERAL INFORMATION

2.1. Environmental conditions

During the measurement the environmental conditions were within the listed ranges:

Normal Temperature:	25°C
Relative Humidity:	55 %
Air Pressure:	101 kPa

2.2. General Description of EUT

Product Name:	wireless barcode scanner
Model/Type reference:	XB-5066R
Power supply:	DC 3.7V from battery
2.4GHz wireless	
Modulation:	GFSK
Operation frequency:	2402MHz~2479MHz
Channel number:	78
Channel separation:	1MHz
Antenna type:	Integrated Antenna
Antenna gain:	1.0dBi

Note: For more details, please refer to the user's manual of the EUT.

2.3. Description of Test Modes and Test Frequency

The Applicant provides communication tools software to control the EUT for staying in continuous transmitting (Duty Cycle more than 98%) and receiving mode for testing .

Operation Frequency List :

Channel	Frequency (MHz)
01	2402
02	2403
⋮	⋮
38	2439
39	2440
40	2441
⋮	⋮
76	2478
77	2479

Note: The line display in grey were the channel selected for testing

2.4. Equipments Used during the Test

Test Equipment	Manufacturer	Model No.	Serial No.	Calibration Date	Calibration Due Date
LISN	R&S	ENV216	3560.6550.1 2	2016/06/02	2017/06/01
LISN	R&S	ESH2-Z5	860014/010	2016/06/02	2017/06/01
Bilog Antenna	Sunol Sciences Corp.	JB1	A061713	2016/06/02	2017/06/01
EMI Test Receiver	R&S	ESCI	103710	2016/06/02	2017/06/01
Spectrum Analyzer	Agilent	E4407B	MY41440676	2016/05/21	2017/05/20
Spectrum Analyzer	Agilent	N9020	US46220290	2015/11/11	2016/11/11
Controller	EM Electronics	Controller EM 1000	N/A	2016/05/21	2017/05/20
Horn Antenna	Sunol Sciences Corp.	DRH-118	A062013	2016/05/19	2017/05/18
Active Loop Antenna	SCHWARZBECK	FMZB1519	1519-037	2016/05/19	2017/05/18
Amplifier	Agilent	8349B	3008A02306	2016/05/19	2017/05/18
Amplifier	Agilent	8447D	2944A10176	2016/05/19	2017/05/18
Temperature/Humidity Meter	Gangxing	CTH-608	02	2016/05/20	2017/05/19
High-Pass Filter	K&L	9SH10-2700/X1 2750-O/O	N/A	2016/05/20	2017/05/19
High-Pass Filter	K&L	41H10-1375/U1 2750-O/O	N/A	2016/05/20	2017/05/19
Coaxial Cables	HUBER+SUHNER	SUCOFLEX 104PEA-10M	10m	2016/06/02	2017/06/01
Coaxial Cables	HUBER+SUHNER	SUCOFLEX 104PEA-3M	3m	2016/06/02	2017/06/01
Coaxial Cables	HUBER+SUHNER	SUCOFLEX 104PEA-3M	3m	2016/06/02	2017/06/01
RF Cable	Megalon	RF-A303	N/A	2016/06/02	2017/06/01

The calibration interval was one year

2.5. Related Submittal(s) / Grant(s)

This submittal(s) (test report) is intended to comply with Section 15.249 of the FCC Part 15, Subpart C Rules.

2.6. Modifications

No modifications were implemented to meet testing criteria.

3. TEST CONDITIONS AND RESULTS

3.1. Conducted Emissions Test

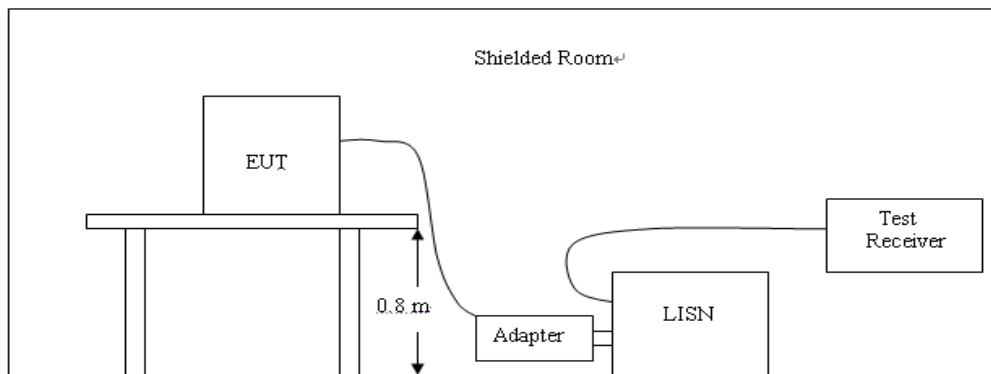
LIMIT

FCC CFR Title 47 Part 15 Subpart C Section 15.207

Frequency range (MHz)	Limit (dBuV)	
	Quasi-peak	Average
0.15-0.5	66 to 56*	56 to 46*
0.5-5	56	46
5-30	60	50

* Decreases with the logarithm of the frequency.

TEST CONFIGURATION



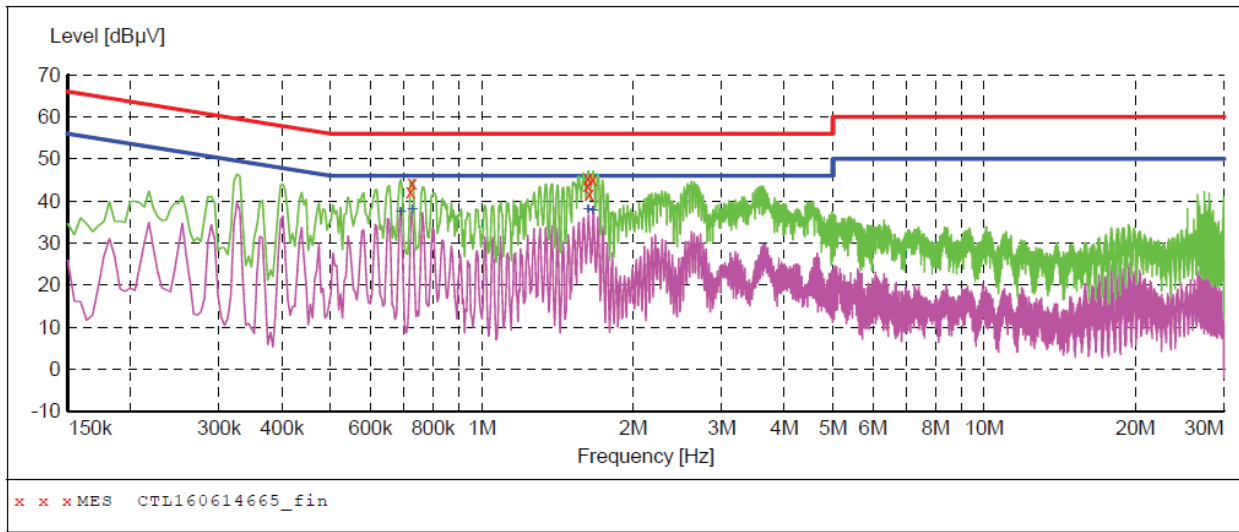
TEST PROCEDURE

1. The equipment was set up as per the test configuration to simulate typical actual usage per the user's manual. The EUT is a tabletop system; a wooden table with a height of 0.8 meters is used and is placed on the ground plane as per ANSI C63.10:2013.
2. Support equipment, if needed, was placed as per ANSI C63.10:2013.
3. All I/O cables were positioned to simulate typical actual usage as per ANSI C63.10:2013.
4. If a EUT received DC power from the USB Port of Notebook PC, the PC's adapter received AC120V/60Hz power through a Line Impedance Stabilization Network (LISN) which supplied power source and was grounded to the ground plane.
5. All support equipments received AC power from a second LISN, if any.
6. The EUT test program was started. Emissions were measured on each current carrying line of the EUT using a spectrum Analyzer / Receiver connected to the LISN powering the EUT. The LISN has two monitoring points: Line 1 (Hot Side) and Line 2 (Neutral Side). Two scans were taken: one with Line 1 connected to Analyzer / Receiver and Line 2 connected to a 50 ohm load; the second scan had Line 1 connected to a 50 ohm load and Line 2 connected to the Analyzer / Receiver.
7. Analyzer / Receiver scanned from 150 KHz to 30MHz for emissions in each of the test modes.
8. During the above scans, the emissions were maximized by cable manipulation.

TEST RESULTS

SCAN TABLE: "Voltage (9K-30M) FIN"

Short Description: 150K-30M Voltage



MEASUREMENT RESULT: "CTL160614665_fin"

6/14/2016 7:40PM

Frequency MHz	Level dBµV	Transd dB	Limit dBµV	Margin dB	Detector	Line	PE
0.721501	42.10	10.2	56	13.9	QP	L1	GND
0.726001	44.40	10.2	56	11.6	QP	L1	GND
1.621501	43.70	10.3	56	12.3	QP	L1	GND
1.626001	45.40	10.3	56	10.6	QP	L1	GND
1.635001	41.70	10.3	56	14.3	QP	L1	GND
1.662001	45.20	10.3	56	10.8	QP	L1	GND

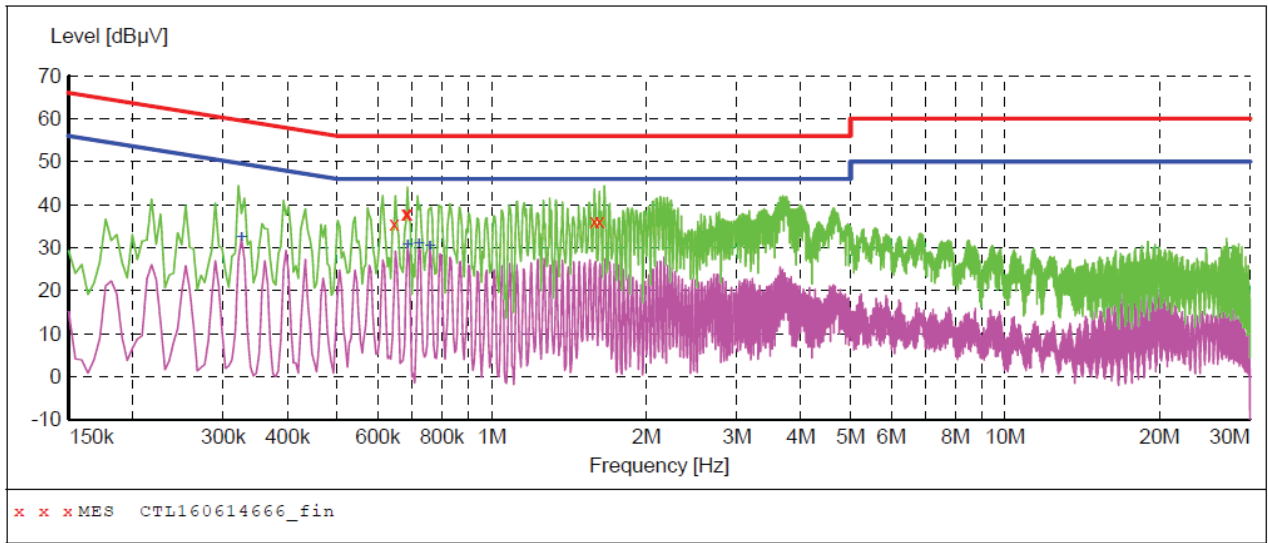
MEASUREMENT RESULT: "CTL160614665_fin2"

6/14/2016 7:40PM

Frequency MHz	Level dBµV	Transd dB	Limit dBµV	Margin dB	Detector	Line	PE
0.690001	37.30	10.2	46	8.7	AV	L1	GND
0.726001	37.90	10.2	46	8.1	AV	L1	GND
1.626001	37.90	10.3	46	8.1	AV	L1	GND
1.662001	37.60	10.3	46	8.4	AV	L1	GND

SCAN TABLE: "Voltage (9K-30M) FIN"

Short Description: 150K-30M Voltage



MEASUREMENT RESULT: "CTL160614666_fin"

6/14/2016 7:44PM

Frequency MHz	Level dBµV	Transd dB	Limit dBµV	Margin dB	Detector	Line	PE
0.645001	35.60	10.2	56	20.4	QP	N	GND
0.681001	37.80	10.2	56	18.2	QP	N	GND
0.685501	37.90	10.2	56	18.1	QP	N	GND
1.585501	36.00	10.3	56	20.0	QP	N	GND
1.621501	36.20	10.3	56	19.8	QP	N	GND

MEASUREMENT RESULT: "CTL160614666_fin2"

6/14/2016 7:44PM

Frequency MHz	Level dBµV	Transd dB	Limit dBµV	Margin dB	Detector	Line	PE
0.325501	32.30	10.2	50	17.3	AV	N	GND
0.685501	30.70	10.2	46	15.3	AV	N	GND
0.721501	30.80	10.2	46	15.2	AV	N	GND
0.757501	30.40	10.2	46	15.6	AV	N	GND

3.2. Radiated Emissions and Band Edge

Limit

According 15.249, the field strength of emissions from intentional radiators operated within 2400MHz-2483.5 MHz shall not exceed 94dB μ V/m (50mV/m):

FCC PART 15.249(d) Emissions radiated outside of the specified frequency bands, except for harmonics, shall be attenuated by at least 50 dB below the level of the fundamental or to the general radiated emission limits in §15.209, whichever is the lesser attenuation.

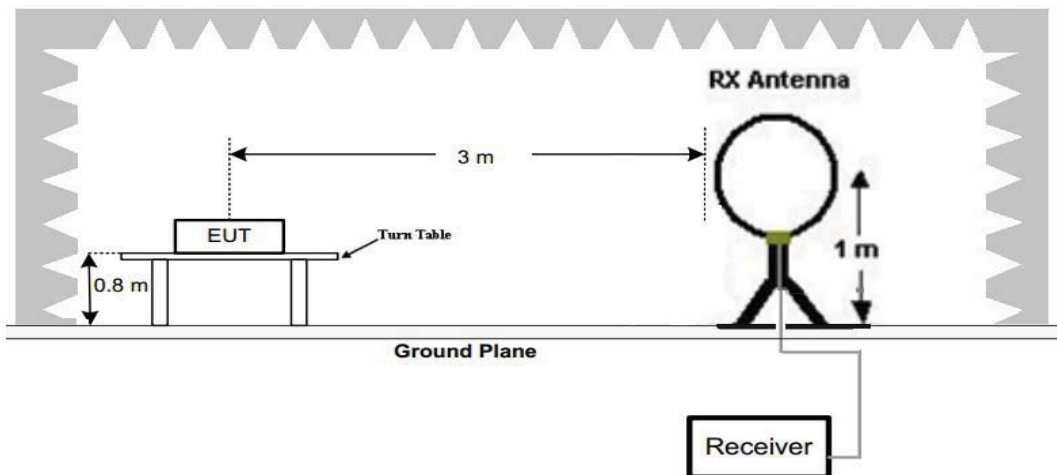
In addition, radiated emissions which fall in the restricted bands, as defined in §15.205(a), must also comply with the radiated emission limits specified in §15.209(a)

Radiated emission limits

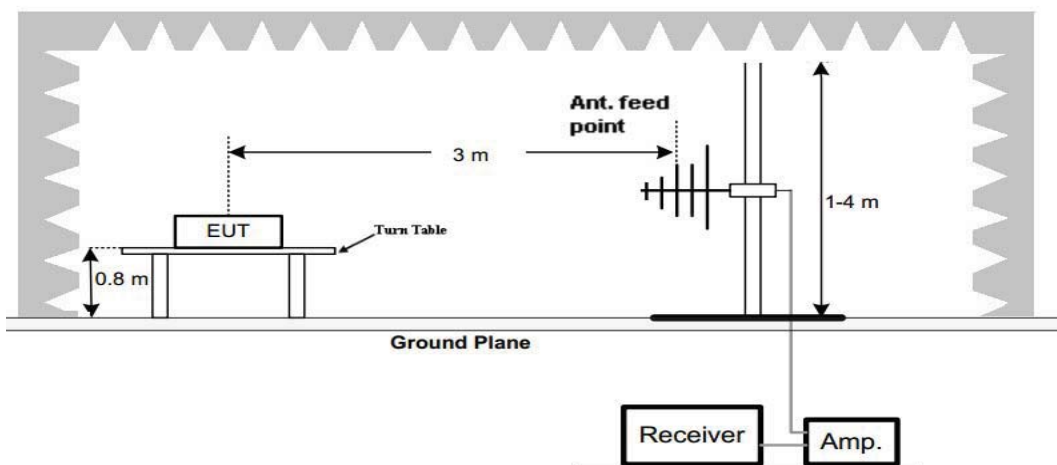
Frequency (MHz)	Distance (Meters)	Radiated (dB μ V/m)	Radiated (μ V/m)
0.009-0.49	3	$20\log(2400/F(\text{KHz}))+40\log(300/3)$	$2400/F(\text{KHz})$
0.49-1.705	3	$20\log(24000/F(\text{KHz}))+40\log(30/3)$	$24000/F(\text{KHz})$
1.705-30	3	$20\log(30)+40\log(30/3)$	30
30-88	3	40.0	100
88-216	3	43.5	150
216-960	3	46.0	200
Above 960	3	54.0	500

TEST CONFIGURATION

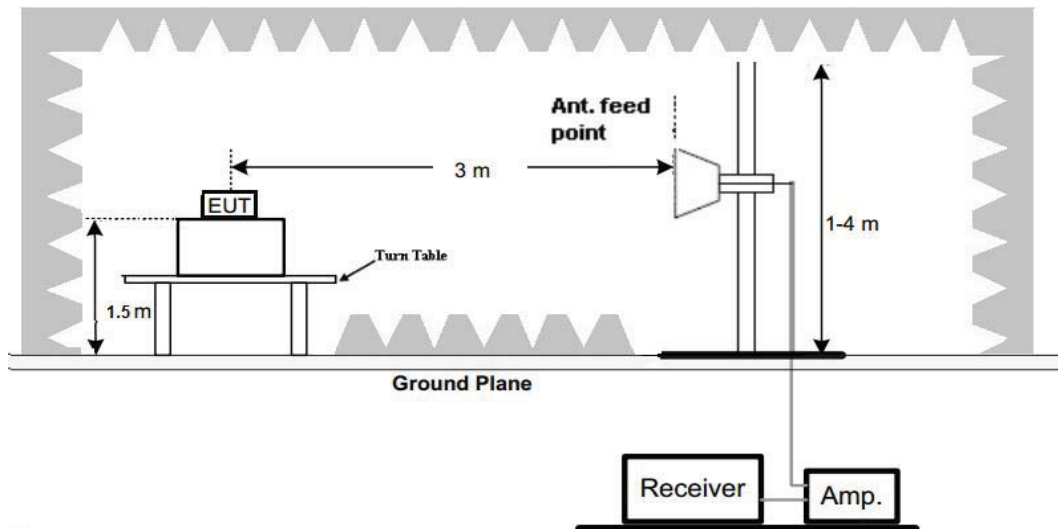
(A) Radiated Emission Test Set-Up, Frequency Below 30MHz



(B) Radiated Emission Test Set-Up, Frequency below 1000MHz



(C) Radiated Emission Test Set-Up, Frequency above 1000MHz

**Test Procedure**

1. Below 1GHz measurement the EUT is placed on a turntable which is 0.8m above ground plane, and above 1GHz measurement EUT was placed on a low permittivity and low loss tangent turn table which is 1.5m above ground plane.
2. The EUT was set 3 meters away from the interference-receiving antenna, which was mounted on the top of a variable-height antenna tower.
3. The test-receiver system was set to quasi-peak detect function and specified bandwidth with maximum hold mode when the test frequency is below 1 GHz.
4. The test-receiver system was set to peak and average detects function and specified bandwidth with maximum hold mode when the test frequency is above 1 GHz. If the peak reading value also meets average limit, measurement with the average detector is unnecessary.
5. Maximum procedure was performed by raising the receiving antenna from 1m to 4m and rotating the turn table from 0° to 360° to acquire the highest emissions from EUT
6. And also, each emission was to be maximized by changing the polarization of receiving antenna both horizontal and vertical.
7. Repeat above procedures until all frequency measurements have been completed.

TEST RESULTS

Remark:

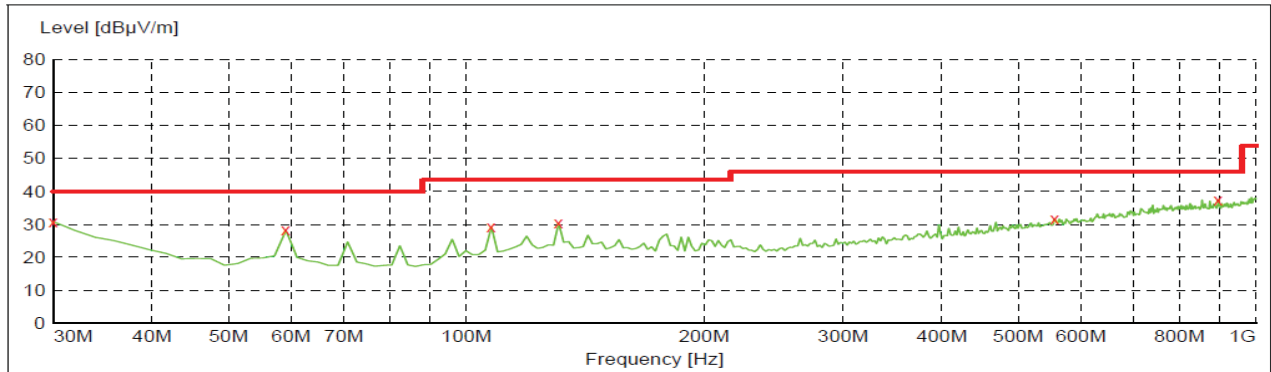
1. By preliminary testing and verifying three axis (X, Y and Z) position of EUT transmitted status, it was found that "Z axis" position was the worst, and test data recorded in this report.
2. Radiated emission test from 9 KHz to 10th harmonic of fundamental was verified, and no emission found except system noise floor in 9 KHz to 30MHz and not recorded in this report.
3. For Below 1GHz test, only the worst result of High Channel was reported.

For 30MHz-1GHz

Horizontal

SWEEP TABLE: "test (30M-1G)"

Short Description:		Field Strength				Transducer
Start	Stop	Detector	Meas. Time	IF Bandw.		
30.0 MHz	1.0 GHz	MaxPeak	300.0 ms	120 kHz	JB1	



x x x MES CTL160621011_red

MEASUREMENT RESULT: "CTL160621011_red"

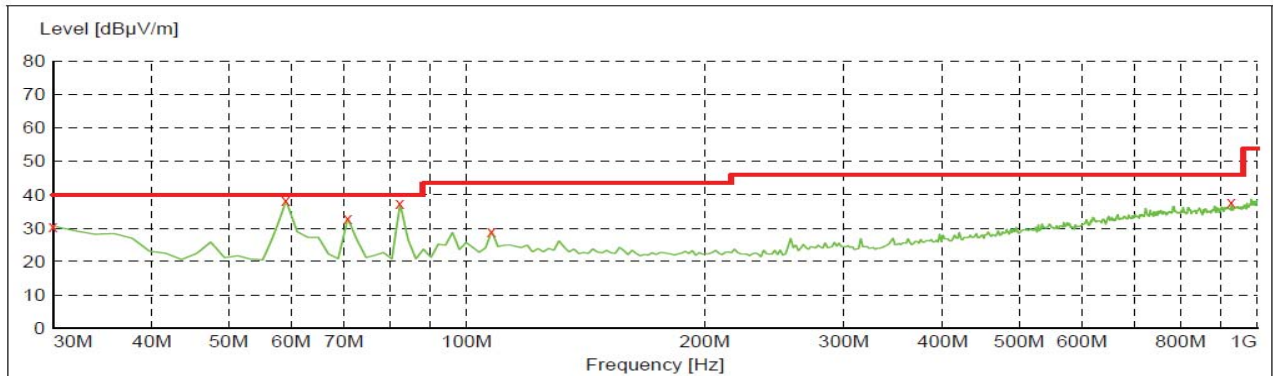
6/21/2016 9:34AM

Frequency MHz	Level dBµV/m	Transd dB	Limit dBµV/m	Margin dB	Det.	Height cm	Azimuth deg	Polarization
30.000000	30.80	20.8	40.0	9.2	---	0.0	0.00	HORIZONTAL
59.100000	28.20	8.0	40.0	11.8	---	0.0	0.00	HORIZONTAL
107.600000	29.20	12.9	43.5	14.3	---	0.0	0.00	HORIZONTAL
130.880000	30.40	14.5	43.5	13.1	---	0.0	0.00	HORIZONTAL
555.740000	31.70	21.1	46.0	14.3	---	0.0	0.00	HORIZONTAL
895.240000	37.50	25.9	46.0	8.5	---	0.0	0.00	HORIZONTAL

Vertical

SWEEP TABLE: "test (30M-1G)"

Short Description:		Field Strength				Transducer
Start	Stop	Detector	Meas. Time	IF Bandw.		
30.0 MHz	1.0 GHz	MaxPeak	300.0 ms	120 kHz	JB1	



x x x MES CTL160621010_red

MEASUREMENT RESULT: "CTL160621010_red"

6/21/2016 9:33AM

Frequency MHz	Level dBµV/m	Transd dB	Limit dBµV/m	Margin dB	Det.	Height cm	Azimuth deg	Polarization
30.000000	30.60	20.8	40.0	9.4	---	0.0	0.00	VERTICAL
59.100000	38.20	8.0	40.0	1.8	---	0.0	0.00	VERTICAL
70.740000	32.90	8.2	40.0	7.1	---	0.0	0.00	VERTICAL
82.380000	37.30	8.7	40.0	2.7	---	0.0	0.00	VERTICAL
107.600000	29.10	12.9	43.5	14.4	---	0.0	0.00	VERTICAL
928.220000	37.70	26.2	46.0	8.3	---	0.0	0.00	VERTICAL

For 1GHz to 25GHz

GFSK Mode (above 1GHz)

Frequency(MHz):				2402		Polarity:			HORIZONTAL	
No.	Frequency (MHz)	Emission Level (dBuV/m)		Limit (dBuV/m)	Margin (dB)	Raw Value (dBuV)	Antenna Factor (dB/m)	Cable Factor (dB)	Pre-amplifier (dB)	Correction Factor (dB/m)
1	2402.00	95.54	PK	114	18.46	62.14	28.78	4.61	0.00	33.40
1	2402.00	87.25	AV	94	6.75	53.85	28.78	4.61	0.00	33.40
2	2390.00	51.65	PK	74	22.35	18.33	28.72	4.60	0.00	33.32
2	2390.00	--	AV	54	--	--	--	--	--	--
3	2400.00	46.35	PK	74	27.65	12.96	28.78	4.61	0.00	33.39
3	2400.00	--	AV	54	--	--	--	--	--	--
4	4804.00	58.61	PK	74	15.39	54.10	33.49	6.91	35.89	4.51
4	4804.00	49.63	AV	54	4.37	45.12	33.49	6.91	35.89	4.51
5	5024.50	43.21	PK	74	30.79	36.34	34.07	7.04	34.24	6.87
5	5024.50	--	AV	54	--	--	--	--	--	--
6	7206.00	49.52	PK	74	24.48	38.41	36.95	9.18	35.03	11.11
6	7206.00	--	AV	54	--	--	--	--	--	--

Frequency(MHz):				2402		Polarity:			VERTICAL	
No.	Frequency (MHz)	Emission Level (dBuV/m)		Limit (dBuV/m)	Margin (dB)	Raw Value (dBuV)	Antenna Factor (dB/m)	Cable Factor (dB)	Pre-amplifier (dB)	Correction Factor (dB/m)
1	2402.00	95.63	PK	114	18.37	62.23	28.78	4.61	0.00	33.40
1	2402.00	87.36	AV	94	6.64	53.96	28.78	4.61	0.00	33.40
2	2390.00	50.44	PK	74	23.56	17.12	28.72	4.60	0.00	33.32
2	2390.00	--	AV	54	--	--	--	--	--	--
3	2400.00	47.58	PK	74	26.42	14.19	28.78	4.61	0.00	33.39
3	2400.00	--	AV	54	--	--	--	--	--	--
4	4804.00	57.69	PK	74	16.31	53.18	33.49	6.91	35.89	4.51
4	4804.00	50.33	AV	54	3.67	45.82	33.49	6.91	35.89	4.51
5	5025.75	44.25	PK	74	29.75	37.37	34.07	7.05	34.24	6.88
5	5025.75	--	AV	54	--	--	--	--	--	--
6	7206.00	50.24	PK	74	23.76	39.13	36.95	9.18	35.03	11.11
6	7206.00	--	AV	54	--	--	--	--	--	--

REMARKS:

1. Emission level (dBuV/m) =Raw Value (dBuV)+Correction Factor (dB/m)
2. Correction Factor (dB/m) = Antenna Factor (dB/m)+Cable Factor (dB)-Pre-amplifier Factor
3. Margin value = Limit value- Emission level.
4. -- Mean the PK detector measured value is below average limit.
5. The other emission levels were very low against the limit.
6. RBW1MHz VBW3MHz Peak detector is for PK value; RBW 1MHz VBW10Hz Peak detector is for AV value.

Frequency(MHz):				2440		Polarity:			HORIZONTAL	
No.	Frequency (MHz)	Emission Level (dBuV/m)		Limit (dBuV/m)	Margin (dB)	Raw Value (dBuV)	Antenna Factor (dB/m)	Cable Factor (dB)	Pre-amplifier (dB)	Correction Factor (dB/m)
1	2440.00	96.35	PK	114	17.65	62.84	28.85	4.65	0.00	33.51
1	2440.00	88.15	AV	94	5.85	54.64	28.85	4.65	0.00	33.51
2	4013.25	40.23	PK	74	33.77	35.54	33.08	6.40	34.79	4.69
2	4013.25	--	AV	54	--	--	--	--	--	--
3	4880.00	59.36	PK	74	14.64	53.11	33.60	6.95	34.30	6.25
3	4880.00	50.10	AV	54	3.9	43.85	33.60	6.95	34.30	6.25
4	5133.50	42.36	PK	74	31.64	35.01	34.40	7.11	34.15	7.35
4	5133.50	--	AV	54	--	--	--	--	--	--
5	7320.00	48.32	PK	74	25.68	36.63	37.46	9.23	35.00	11.69
5	7320.00	--	AV	54	--	--	--	--	--	--

Frequency(MHz):				2440		Polarity:			VERTICAL	
No.	Frequency (MHz)	Emission Level (dBuV/m)		Limit (dBuV/m)	Margin (dB)	Raw Value (dBuV)	Antenna Factor (dB/m)	Cable Factor (dB)	Pre-amplifier (dB)	Correction Factor (dB/m)
1	2440.00	95.63	PK	114	18.37	62.12	28.85	4.65	0.00	33.51
1	2440.00	87.75	AV	94	6.25	54.24	28.85	4.65	0.00	33.51
2	3765.75	40.14	PK	74	33.86	35.90	33.06	6.14	34.96	4.24
2	3765.75	--	AV	54	--	--	--	--	--	--
3	4880.00	58.23	PK	74	15.77	51.87	33.60	6.95	34.19	6.36
3	4880.00	50.24	AV	54	3.76	43.88	33.60	6.95	34.19	6.36
4	5133.25	41.22	PK	74	32.78	33.87	34.40	7.11	34.15	7.35
4	5133.25	--	AV	54	--	--	--	--	--	--
5	7320.00	48.63	PK	74	25.37	36.94	37.46	9.23	35.00	11.69
5	7320.00	--	AV	54	--	--	--	--	--	--

REMARKS:

1. Emission level (dBuV/m) =Raw Value (dBuV)+Correction Factor (dB/m)
2. Correction Factor (dB/m) = Antenna Factor (dB/m)+Cable Factor (dB)-Pre-amplifier Factor
3. Margin value = Limit value- Emission level.
4. -- Mean the PK detector measured value is below average limit.
5. The other emission levels were very low against the limit.
6. RBW1MHz VBW3MHz Peak detector is for PK value; RBW 1MHz VBW10Hz Peak detector is for AV value.

Frequency(MHz):				2479		Polarity:			HORIZONTAL	
No.	Frequency (MHz)	Emission Level (dBuV/m)		Limit (dBuV/m)	Margin (dB)	Raw Value (dBuV)	Antenna Factor (dB/m)	Cable Factor (dB)	Pre-amplifier (dB)	Correction Factor (dB/m)
1	2479.00	94.18	PK	114	19.82	60.56	28.92	4.70	0.00	33.62
1	2479.00	86.39	AV	94	7.61	52.77	28.92	4.70	0.00	33.62
2	2483.50	43.21	PK	74	30.79	9.58	28.93	4.70	0.00	33.63
2	2483.50	--	AV	54	--	--	--	--	--	--
3	2500.00	40.63	PK	74	33.37	6.95	28.96	4.72	0.00	33.68
3	2500.00	--	AV	54	--	--	--	--	--	--
4	4958.00	57.14	PK	74	16.86	52.23	33.83	7.00	35.92	4.91
4	4958.00	48.33	AV	54	5.67	43.42	33.83	7.00	35.92	4.91
5	5150.75	42.58	PK	74	31.42	35.31	34.44	7.12	34.28	7.27
5	5150.75	--	AV	54	--	--	--	--	--	--
6	7437.00	49.63	PK	74	24.37	37.68	37.64	9.27	34.97	11.95
6	7437.00	--	AV	54	--	--	--	--	--	--

Frequency(MHz):				2479		Polarity:			VERTICAL	
No.	Frequency (MHz)	Emission Level (dBuV/m)		Limit (dBuV/m)	Margin (dB)	Raw Value (dBuV)	Antenna Factor (dB/m)	Cable Factor (dB)	Pre-amplifier (dB)	Correction Factor (dB/m)
1	2479.00	95.63	PK	114	18.37	62.01	28.92	4.70	0.00	33.62
1	2479.00	87.75	AV	94	6.25	54.13	28.92	4.70	0.00	33.62
2	2483.50	44.25	PK	74	29.75	10.62	28.93	4.70	0.00	33.63
2	2483.50	--	AV	54	--	--	--	--	--	--
3	2500.00	40.74	PK	74	33.26	7.06	28.96	4.72	0.00	33.68
3	2500.00	--	AV	54	--	--	--	--	--	--
4	4958.00	58.15	PK	74	15.85	53.24	33.83	7.00	35.92	4.91
4	4958.00	49.66	AV	54	4.34	44.75	33.83	7.00	35.92	4.91
5	5125.50	40.51	PK	74	33.49	33.30	34.38	7.10	34.28	7.21
5	5125.50	--	AV	54	--	--	--	--	--	--
6	7437.00	48.77	PK	74	25.23	36.82	37.64	9.27	34.97	11.95
6	7437.00	--	AV	54	--	--	--	--	--	--

REMARKS:

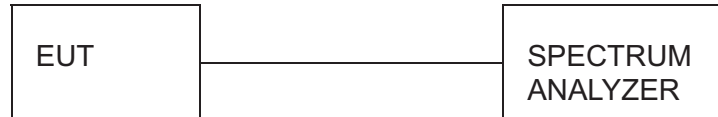
1. Emission level (dBuV/m) =Raw Value (dBuV)+Correction Factor (dB/m)
2. Correction Factor (dB/m) = Antenna Factor (dB/m)+Cable Factor (dB)-Pre-amplifier Factor
3. Margin value = Limit value- Emission level.
4. -- Mean the PK detector measured value is below average limit.
5. The other emission levels were very low against the limit.
6. RBW1MHz VBW3MHz Peak detector is for PK value; RBW 1MHz VBW10Hz Peak detector is for AV value.

3.3. Occupied Bandwidth Measurement

Limit

N/A

Test Configuration



Test Procedure

The transmitter output was connected to the spectrum analyzer through an attenuator. The bandwidth of the fundamental frequency was measured by spectrum analyzer with 30 KHz RBW and 100 KHz VBW.

The 20dB bandwidth is defined as the total spectrum the power of which is higher than peak power minus 20dB.
Peak detector is used.

Test Results

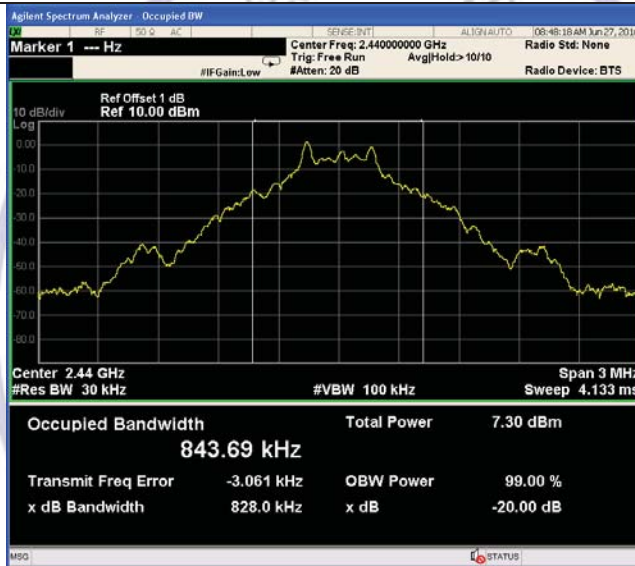
Modulation	Channel	99% OBW (MHz)	20dB bandwidth (MHz)	Result
GFSK	CH00	0.843	0.827	Pass
	CH19	0.844	0.828	
	CH39	0.849	0.828	

Test plot as follows:

GFSK Modulation



CH01



CH39



CH77

3.4. Antenna Requirement

Standard Applicable

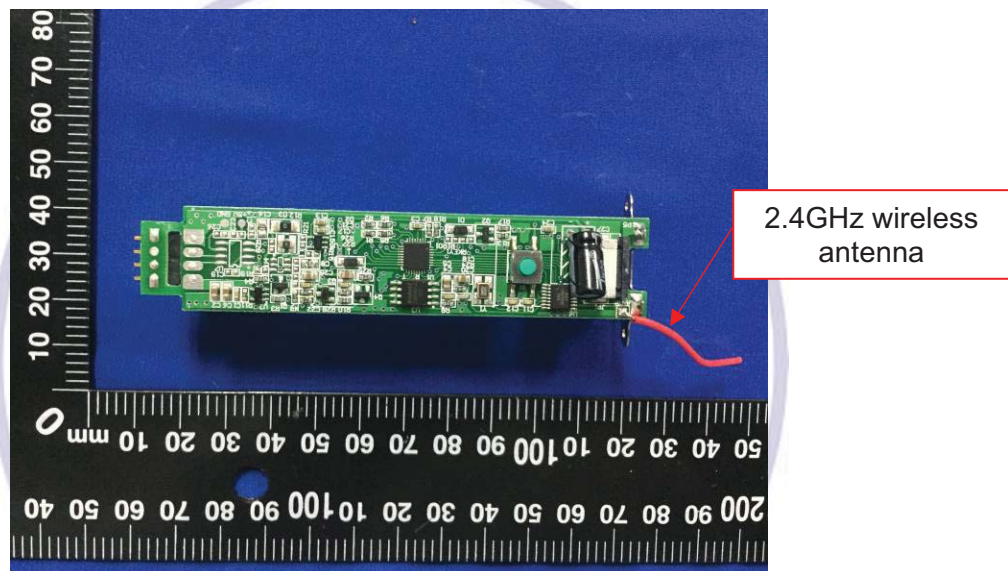
For intentional device, according to FCC 47 CFR Section 15.203, an intentional radiator shall be designed to ensure that no antenna other than that furnished by the responsible party shall be used with the device.

Refer to statement below for compliance.

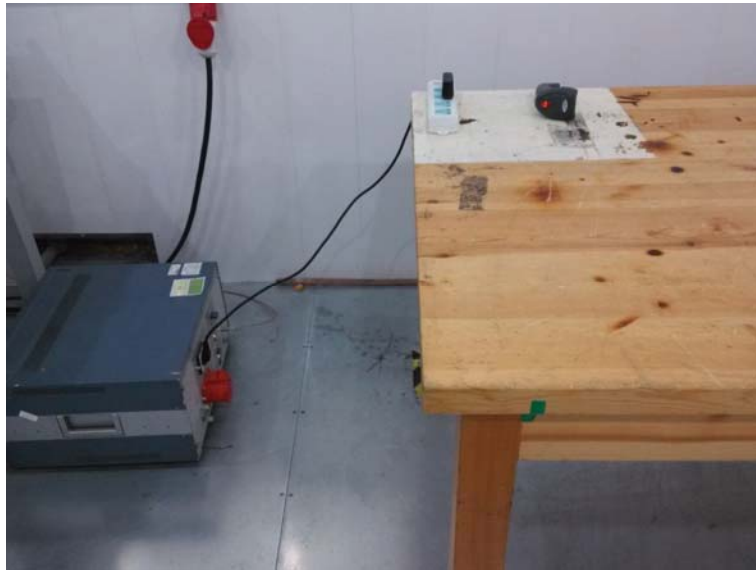
The manufacturer may design the unit so that the user can replace a broken antenna, but the use of a standard antenna jack or electrical connector is prohibited. Further, this requirement does not apply to intentional radiators that must be professionally installed.

Antenna Connected Construction

The antenna used in this product is an internal Antenna, The directional gains of antenna used for transmitting is 1 dBi.



4. Test Setup Photos of the EUT





5. External and Internal Photos of the EUT

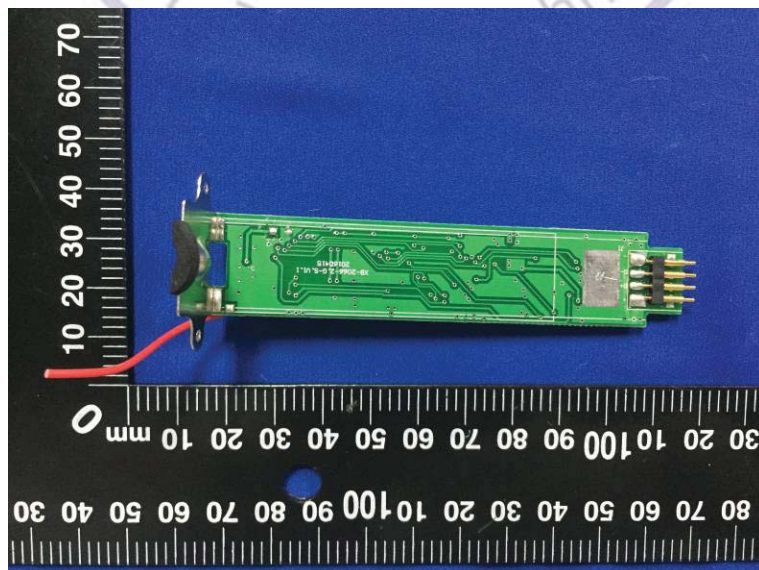
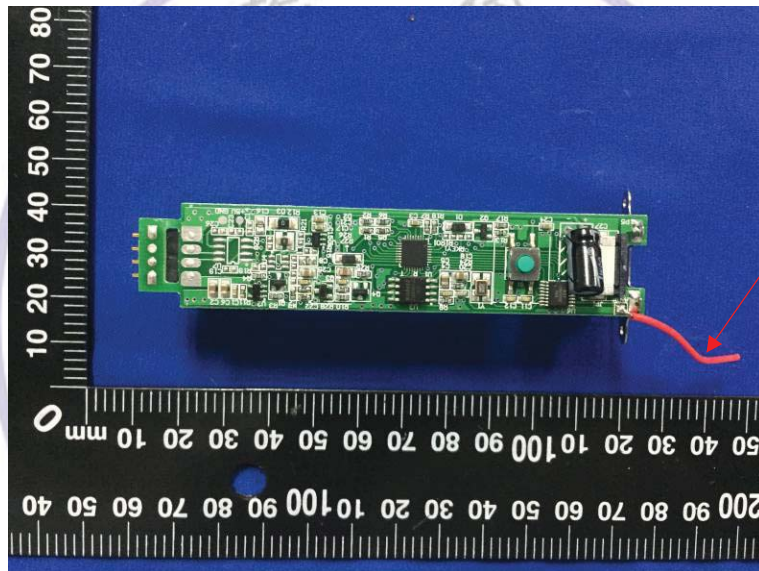
External Photos of EUT

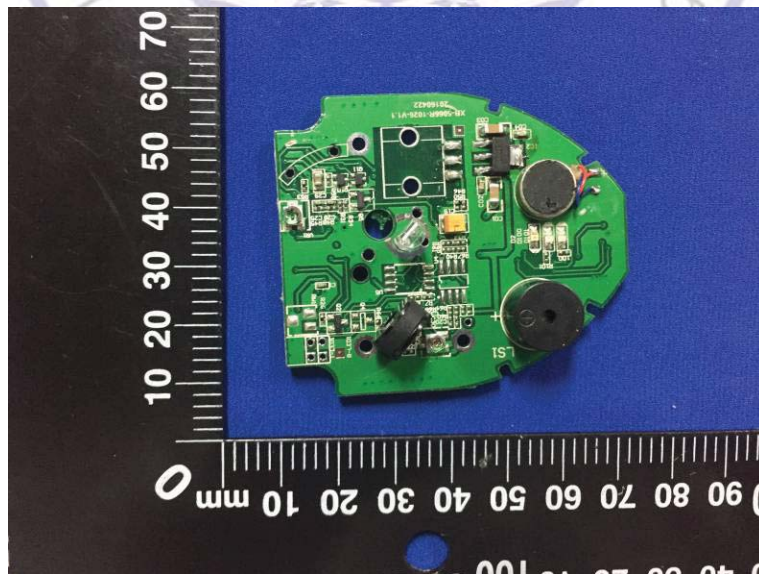
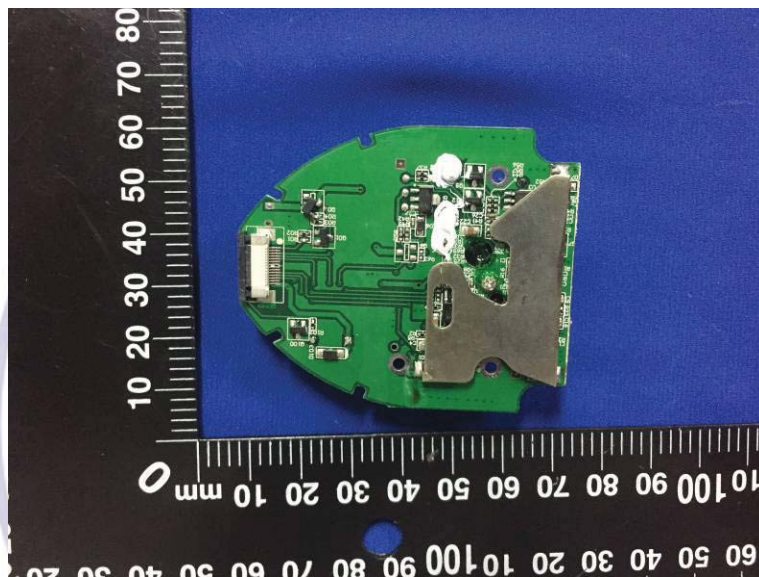
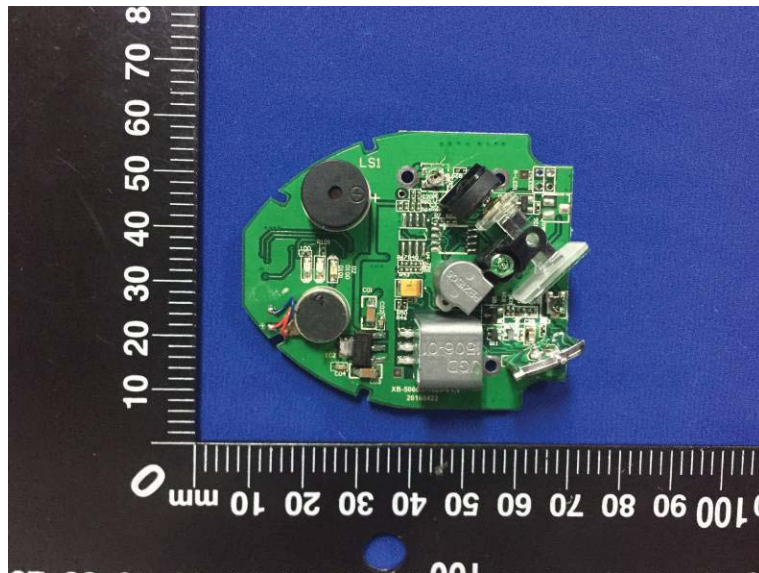


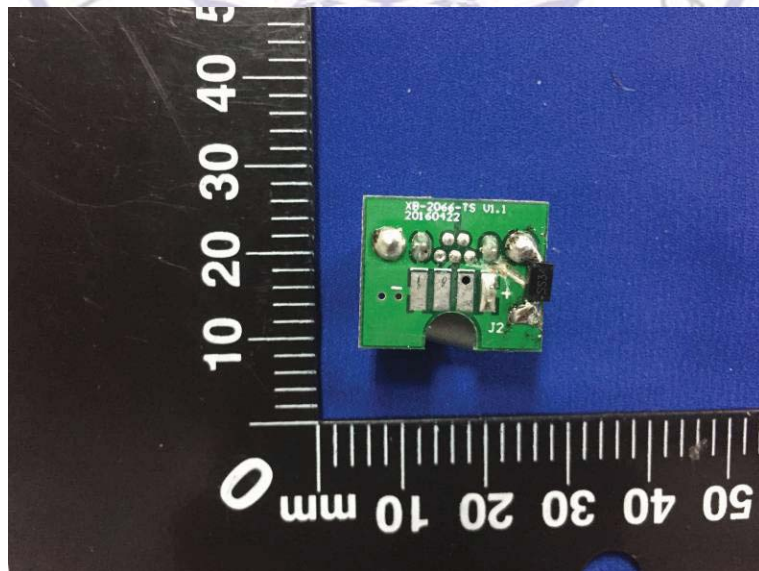
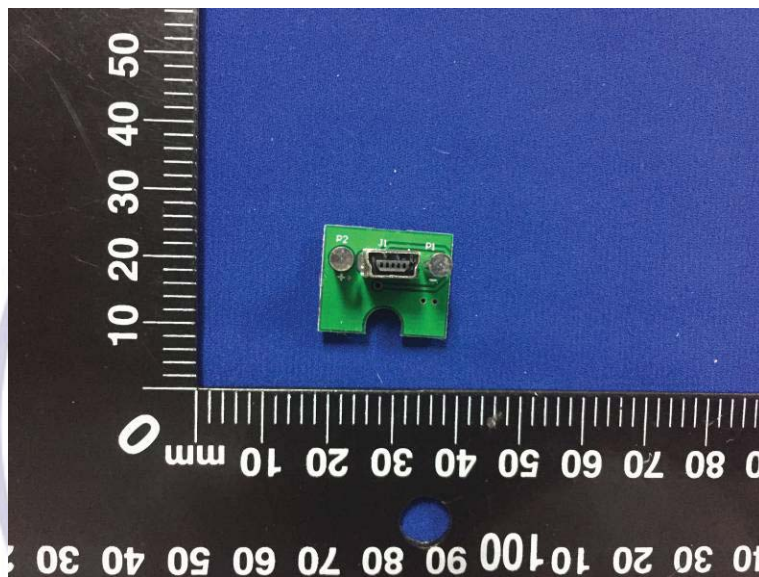
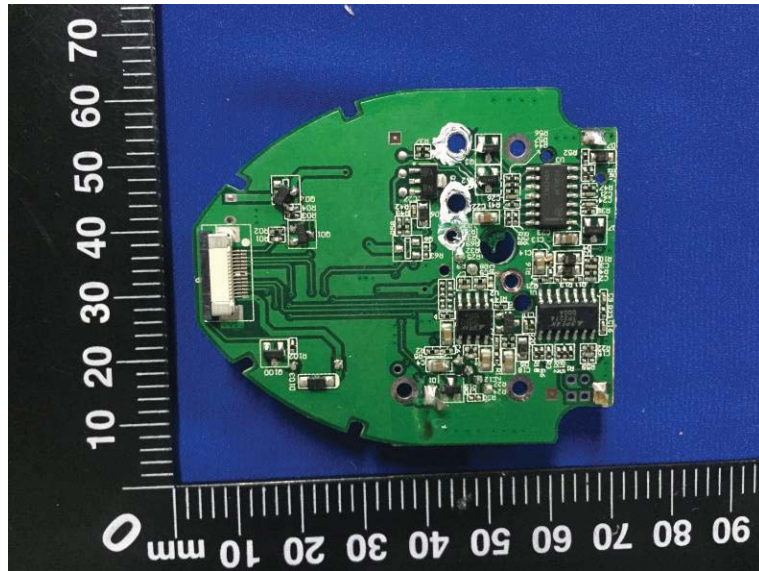




Internal Photos of EUT







***** End of Report *****