

TUNAI

## TUNAI BUTTON BLUETOOTH REMOTE

www.tunai-creative.com  
www.facebook.com/tunai\_global/  
www.instagram.com/tunai\_creative\_eng/

### IMPORTANT NOTICE

• DO NOT disassemble the product, unauthorized disassembly will result warranty to expire

### WARRANTY

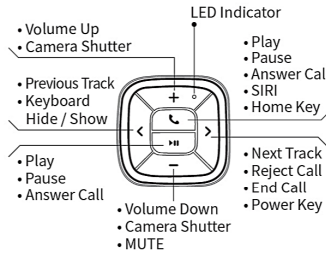
TUNAI provides one year product warranty, please keep your purchase proof and package.

The warranty does not cover the following :

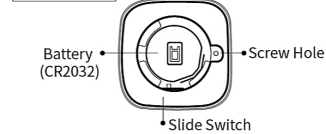
1. Consumable parts (example : exterior coating damage)
2. Appearance damage
3. Damage caused by improper use with other products
4. Damage caused by failure to comply with instructions
5. Purchased from unauthorized seller
6. Unauthorized disassembly of the product
7. Damage caused by accident, abuse, improper use, fire, earthquake or other external causes.

### TUNAI BUTTON OVERVIEW iOS

#### FRONT SIDE

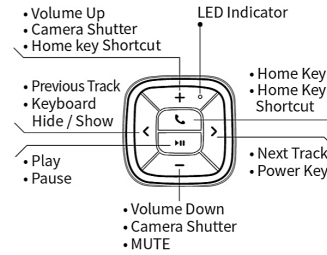


#### BOTTOM SIDE

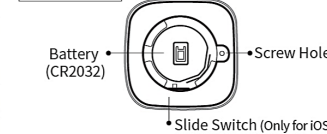


### TUNAI BUTTON Android

#### FRONT SIDE



#### BOTTOM SIDE



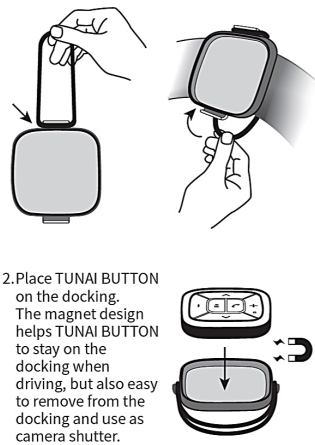
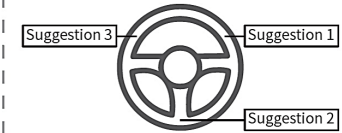
### LED Indicator

#### LED Status

Slow Flash	Attempting to reconnect
Rapid Flash	Pairing Mode
Rapid Flash Twice	Key pressed
Fast Rapid Flash	Incoming calls (iOS only)

### INSTALL TUNAI BUTTON TO YOUR CAR

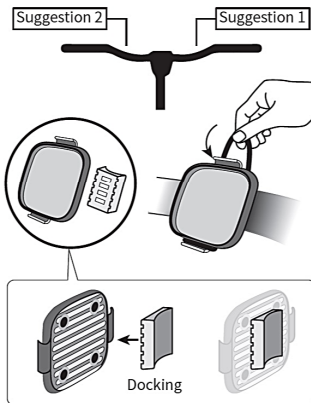
1. Select the proper size of rubber band included, and mount the docking to the suggestion location on your steering wheel.



2. Place TUNAI BUTTON on the docking. The magnet design helps TUNAI BUTTON to stay on the docking when driving, but also easy to remove from the docking and use as camera shutter.

### INSTALL TUNAI BUTTON TO YOUR BIKE

1. Select the proper size of rubber band included, and mount the docking to the suggestion location on your bike handle.

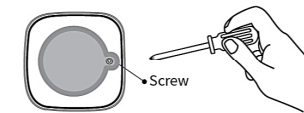


### BATTERY

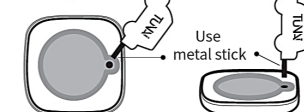
1. TUNAI BUTTON uses a standard CR2032 battery.
2. TUNAI BUTTON can operate up to 3 years with a standard CR2032 battery. This is based on 2 hours connection and 10 key press per day.

### CHANGE BATTERY

1. Remove the screw on back of TUNAI BUTTON



2. Use the metal stick included to open the battery case.



3. Use only standard CR2032 battery.



### ENTER PAIRING MODE

1. TUNAI BUTTON will enter pairing mode when 1st activated.
2. To force TUNAI BUTTON to enter pairing mode, long press "+" and "-" together for 3 seconds.
3. LED will flash rapidly after enter pairing mode.

### PAIRING

1. TUNAI BUTTON enters pairing mode.
2. Search for "TUNAI BUTTON" on the Bluetooth menu of your device.
3. Click on "TUNAI BUTTON" to connect.

### RECONNECT

1. Press any key and TUNAI BUTTON will search and reconnect with the paired device.

### PAIRING WITH MULTIPLE DEVICES

1. TUNAI BUTTON can only pair with one device at a time.
2. If pairing with other devices is needed, re-entering PAIRING mode is required.
3. If TUNAI BUTTON is paired with multiple devices, you may see a previous paired "TUNAI BUTTON" on the paired list, but still seeing "TUNAI BUTTON" on new device search list. This is normal, and is designed to avoid that the device was paired and locked by other device.

### USING TUNAI BUTTON WITH IOS

#### IOS MODE SWITCH

1. MODE A : Disable triggering SIRI from TUNAI BUTTON
2. MODE B : Enable triggering SIRI from TUNAI BUTTON. Note that iPhone virtual keyboard will be hidden in Mode B. You will need to long press "<" key to unhide the virtual keyboard.

3. Use the switch on back of TUNAI BUTTON to choose between MODE A and MODE B.

### KEY DESCRIPTION

Key	Function
+	Mode A : Short Press : Volume Up / Camera Shutter (When using camera) Mode B : Short Press : Volume Down / Camera Shutter (When using camera) / Long Press : Mute
-	Mode A : Short Press : Next Track / Reject Call / End Call Mode B : Long Press : Power Key
>	Mode A : Short Press : Previous Track
<	Mode A : Short Press : Previous Track Mode B : Short Press : Previous Track / Long Press : Hide / Unhide Keyboard
	Mode A : Short Press : Play / Pause / Answer call Mode B : Short Press : Play / Pause
☎	Mode A : Short Press : Previous Track Mode B : Short Press : Previous Track / Long Press : Hide / Unhide Keyboard

### VOICE CALL APP SUPPORT

APPS	Supported Features
Phone Call	Answer Call, Reject Call, End Call, Incoming Call Notification
Skype	Answer Call, Reject Call, End Call, Incoming Call Notification
LINE	Answer Call, End Call, Incoming Call Notification
WeCHAT	Answer Call, Incoming Call Notification

### USING TUNAI BUTTON WITH ANDROID

#### KEY DESCRIPTION

Key	Function
+	Short Press : Volume Up / Camera Shutter (When using camera) / Long Press : Home Key Shortcut
-	Short Press : Volume Down / Camera Shutter (When using camera) / Long Press : Mute
>	Short Press : Next Track / Long Press : Power Key
<	Short Press : Previous Track / Long Press : Keyboard Hide / Unhide
	Short Press : Play / Pause
☎	Short Press : Home / Long Press : Home Key Shortcut

### HOME KEY SHORTCUT

1. Different android phone have different behavior on the HOME KEY SHORTCUT. Check your smartphone manual on the default HOME KEY SHORTCUT behavior.

### VOICE CALL APP SUPPORT LIMITATIONS

1. Due to huge variety of android phones, different phones have different key definition for phone call support.
2. Due to Android limitation, most messenger APPS voice call feature (answer call, reject call, end call) on Android are not supported by TUNAI BUTTON.
3. Incoming call notification is not supported via TUNAI BUTTON.
4. Some Android phone requires to config their smartphone on the "SETTING" to allow phone call feature via TUNAI BUTTON. For example, Samsung smartphone requires to config Home Key as Answer call, and Power key to reject in its "SETTINGS".

### LIST OF TESTED ANDROID COMPATIBILITY FOR VOICE CALL

Model	Voice Call Support
Samsung S6	Answer Call : ☎ Reject Call : >
Samsung S7 Edge	Answer Call : ☎ Reject Call : >
HTC U Ultra	Answer Call :     Reject Call :
HTC U11	Answer Call :     Reject Call :
Google Pixel 2 XL	Answer Call :     Reject Call :
ASUS Zenfone 5	Answer Call :     Reject Call :
Xiaomi Note Pro	Voice call key not supported
HTC One 801e	Voice call key not supported
ASUS Zenfone 2	Voice call key not supported

### LIST OF UNCOMPATIBLE ANDROID PHONES

Model	Capability
Xiaomi 5S Plus	Not compatible with TUNAI BUTTON
OPPO R9s	Not compatible with TUNAI BUTTON

### FCC Disclaimer

The Federal Communication Commission Radio Frequency Interference Statement includes the following paragraph:

The equipment has been tested and found to comply with the limits for a Class B Digital Device, pursuant to part 15 of the FCC Rules. These limits are designed to provide reasonable protection against harmful interference in a residential installation. This equipment generates, uses and can radiate radio frequency energy and, if not installed and used in accordance with the instruction, may cause harmful interference to radio communication. However, there is no guarantee that interference will not occur in a particular installation. If this equipment does cause harmful interference to radio or television reception, which can be determined by turning the equipment off and on, the user is encouraged to try to correct the interference by one or more of the following measures:

1. Reorient or relocate the receiving antenna.
2. Increase the separation between the equipment and receiver.
3. Connect the equipment into an outlet on a circuit different from that to which the receiver is connected.
4. Consult the dealer or an experienced radio/TV technician for help.

FCC Caution (15.19 statement)  
This device complies with Part 15 of the FCC Rules. Operation is subject to the following two conditions: (1) This device may not cause harmful interference, and (2) this device must accept any interference received, including interference that may cause undesired operation.

Radiation Exposure Statement  
The device has been evaluated to meet general RF exposure requirement. The device can be used in portable exposure condition without restriction.

The user should not modify or change this equipment without written approval from TUNAI CREATIVE INC. Modification could void authority to use this equipment.