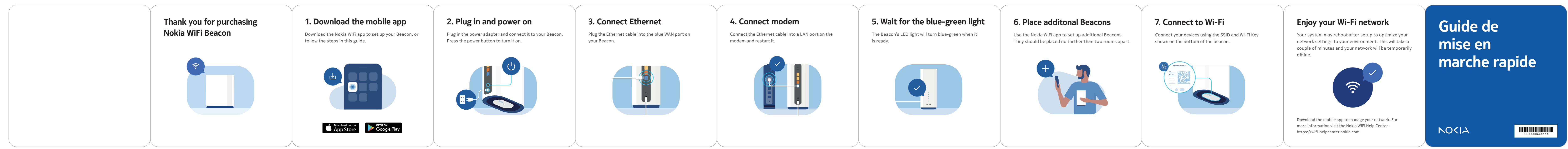


1	2	3	4	5	6
				Remark	Description

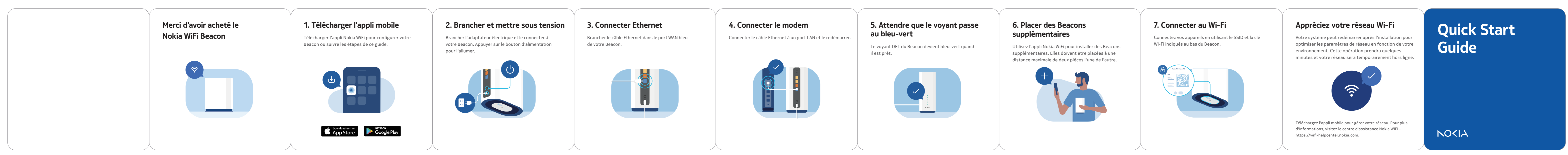
A



正面

A

B

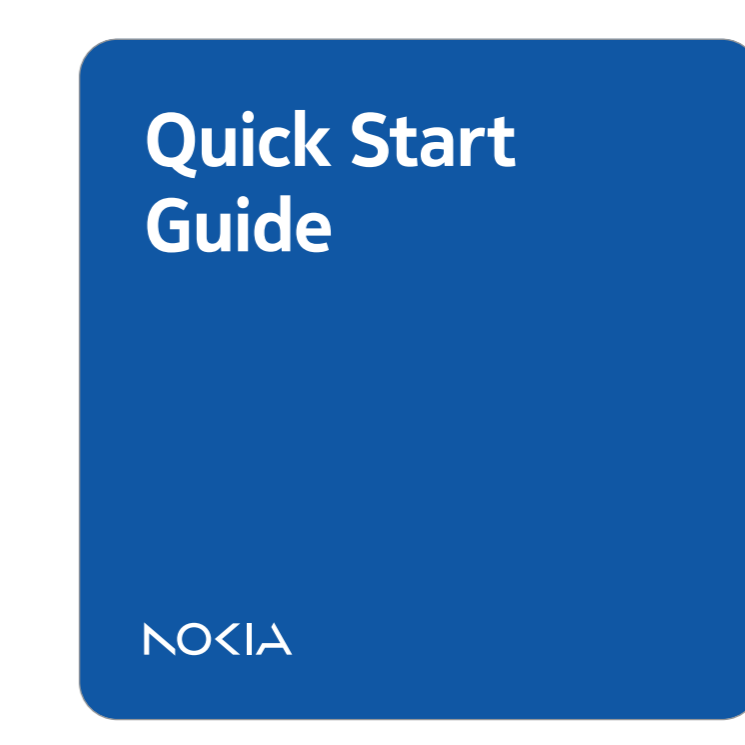


背面

B

C

成品正面图



C

NOTES (技术要求) :

- 1、折叠后尺寸(Dimension after folding): 90\*90mm, R5;
- 2、印刷颜色 (Printing colour) : 彩色印刷 (Colour printing) ;
- 3、材质(Material): 157g哑光铜版纸(157g Matte copperplate paper);
- 4、表面处理 (Coating) : 过哑油 (Matte varnishing) ——双面过油;
- 5、装订工艺 (Binding process) : 折页 (Paper folding) ——风琴折;
- 6、输出网线 (Output lpi) : 200lpi;
- 7、公差 (Tolerance): 长 (L) \*宽 (W) ±1.0mm;
- 8、原材料及后处理工艺均能满足我司《环保技术标准》要求.

(Raw materials and the corresponding post processing should meet requirements defined in the T&W Environmental Protection Technical Standards)

DIM	TOL±					CUSTOMER:		<b>NOKIA</b>				
	RANGE	C1	C2	C3		C4	NOKIA					
	0~6	0.1	0.1	0.15	0.2	TITLE: Quick Start Guide		MODEL:		PART NO:		
	6~30	0.2	0.3	0.4	0.5			Beacon 10_CA		6100000XXXXX		
	30~80	0.25	0.5	0.9	1.2	UNIT'S	mm	VER:	V01	DRAW	沈胜章	DATE: 2023-04-10
	80~180	0.3	0.8	1.2	1.5	MAT'L	/	SCALE	N/A	CHECK	彭泉	
	180~315	0.5	1.3	1.8	3	FINISH	/	SHEET	1/1	PDE	N/A	
	315~500	0.7	1.5	2.5	4							
	500~800	0.9	1.8	3	5							
	ANG.TOL±	0°~30°/0.1°		30°~60°/0.3°		60°~90°/0.5°						

D