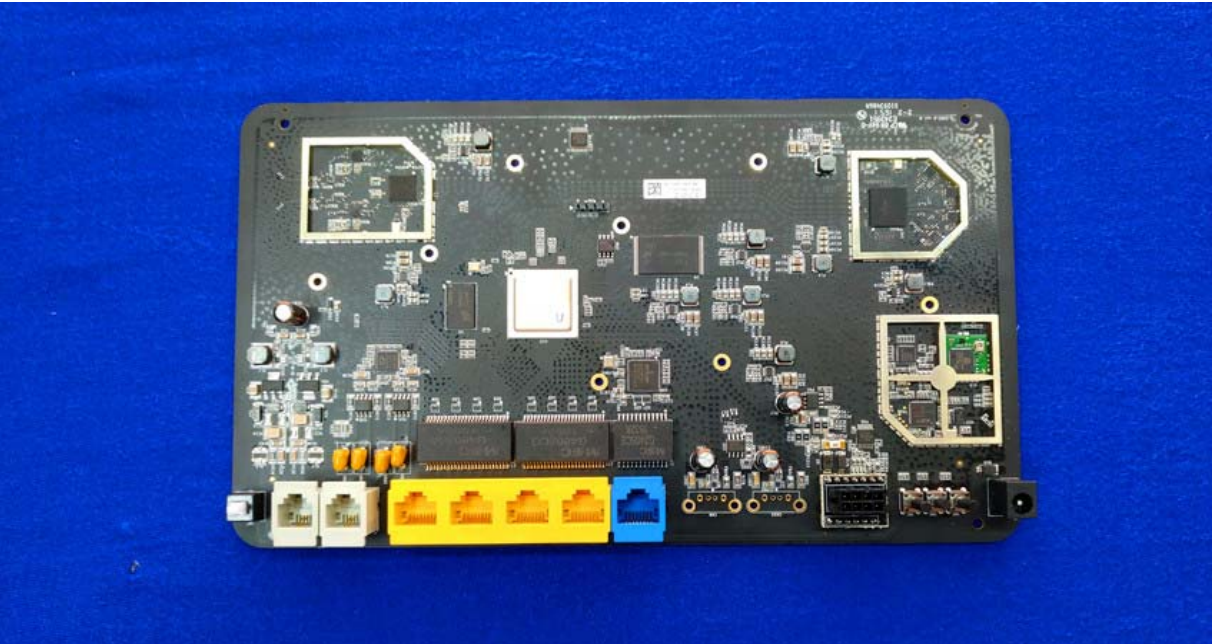
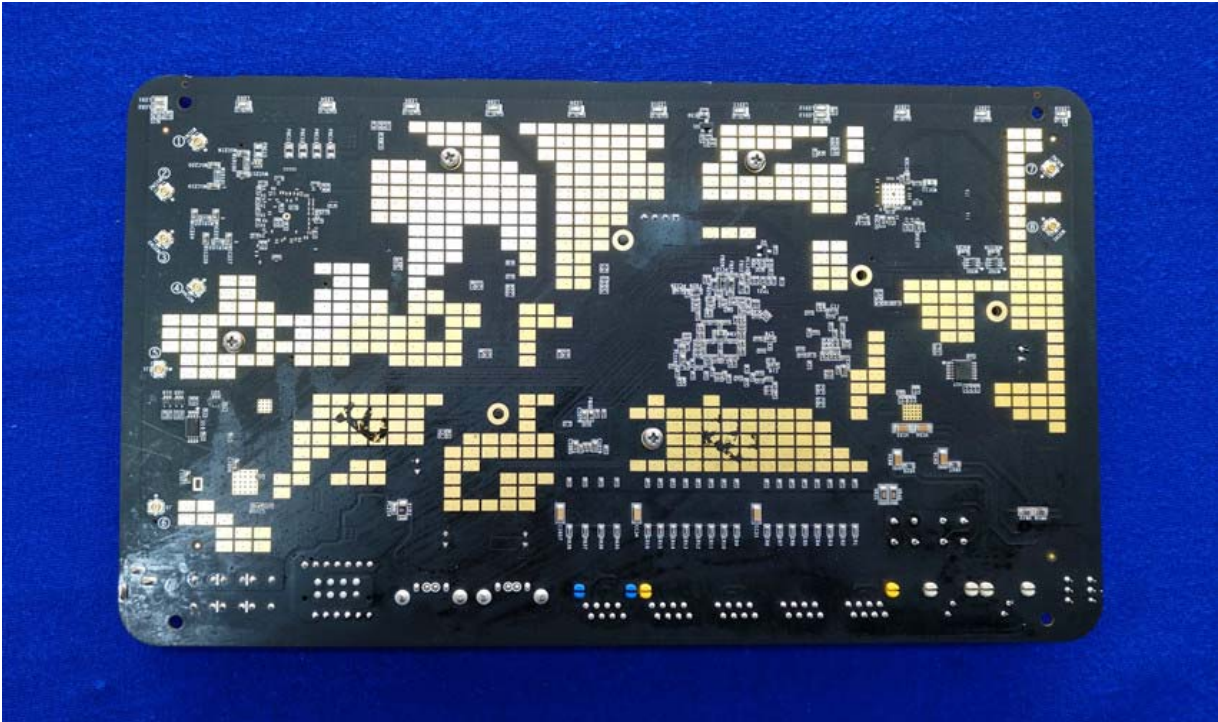


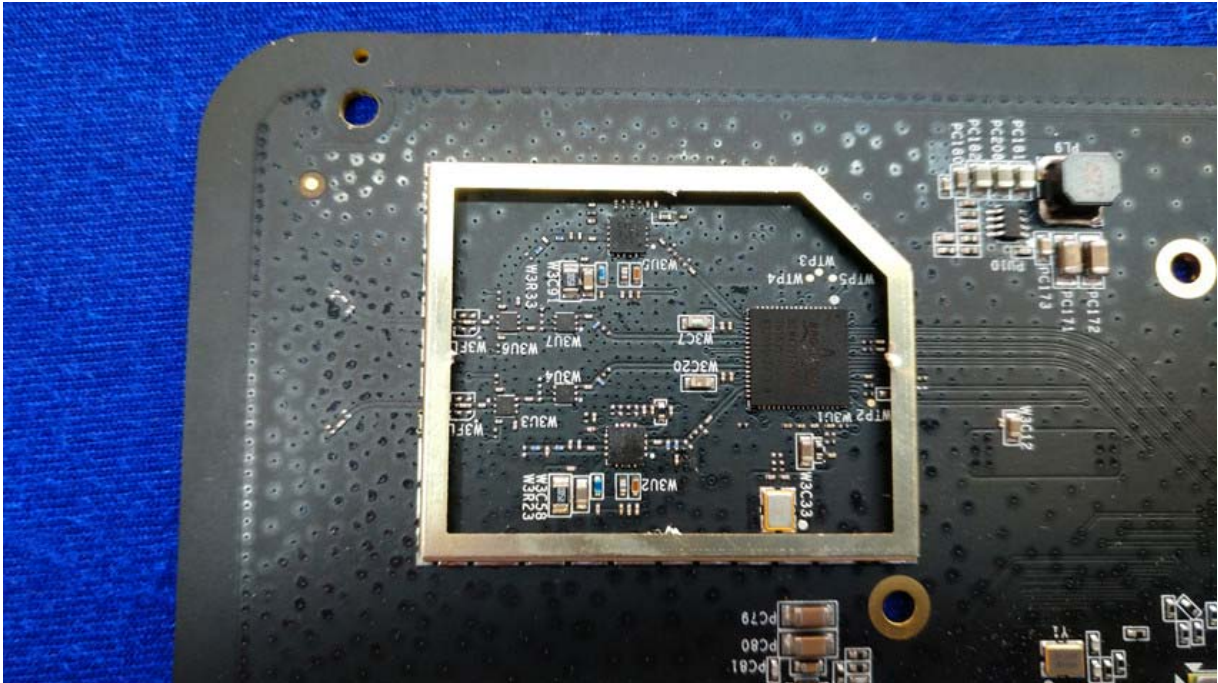
Internal Picture



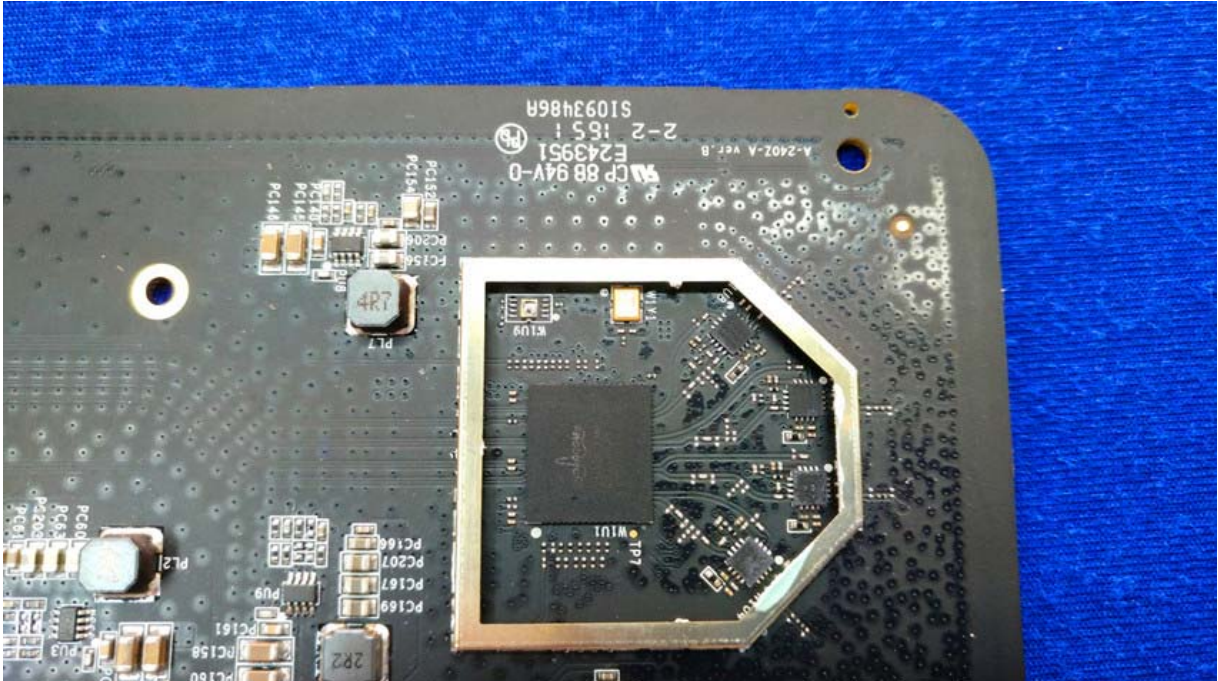




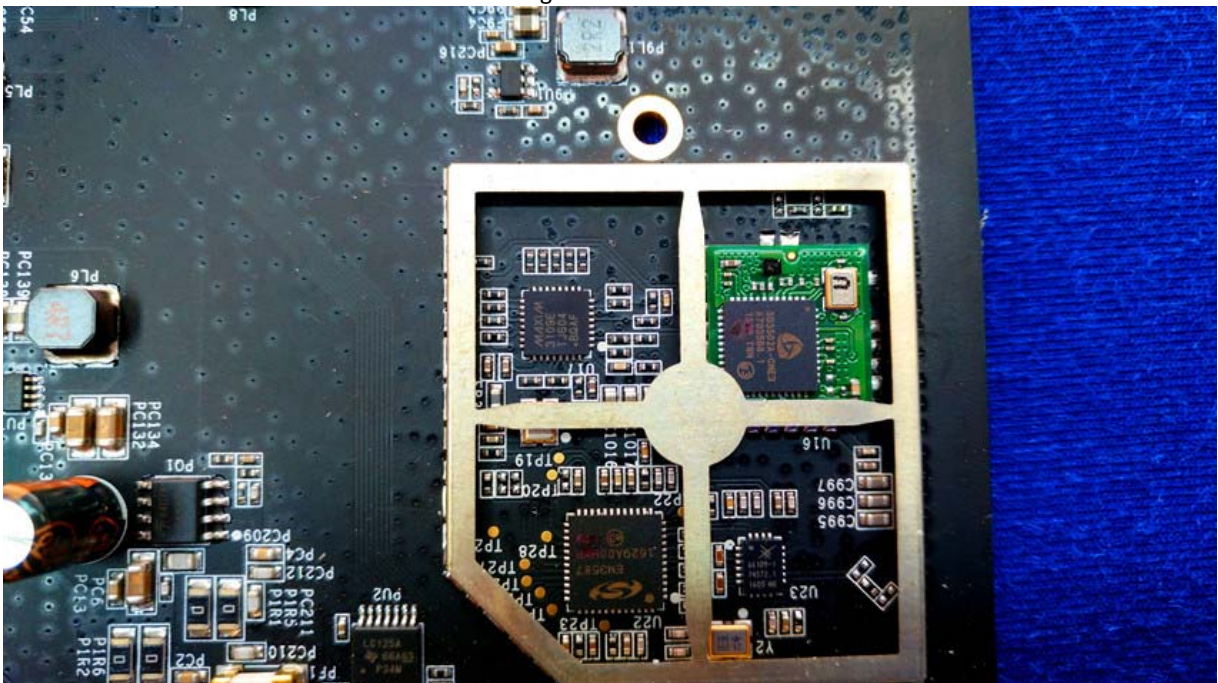
2.4G WIFI



5G WIFI



ZigBee + Z-Wave





Ant . 7 2.4~2.4835GH	Ant . 2 5.17~5.9GHz	Ant . 6 2.4~2.4835GH	Ant . 1 5.17~5.9GHz
-------------------------	------------------------	-------------------------	------------------------



Ant . 3
5.17~5.9GHz

Ant . 5
850~950MHz

Ant . 8
2.4~2.4835GHz

Ant . 4
5.17~5.9GHz

Ant.1~4 PCB Size:25.5*8*0.8mm
Ant.5 PCB Size:80*8*0.8mm(加磁环)
Ant.6~8 PCB Size:40.5*8*0.8mm

Antenna 1~4: 5G WIFI
Antenna 5: Z-Wave
Antenna 6: ZigBee
Antenna 7~8: 2.4G WIFI

