



## Shenzhen Huaxia Testing Technology Co., Ltd.

1F., Block A of Tongsheng Technology Building, Huahui Road, Dalang Street, Longhua District, Shenzhen, China

Telephone: +86-755-26648640  
Fax: +86-755-26648637  
Website: [www.cqa-cert.com](http://www.cqa-cert.com)

Report Template Version: V05  
Report Template Revision Date: 2021-11-03

# Test Report

**Report No.:** CQASZ20230901740E-01  
**Applicant:** Shenzhen Hollyland Technology Co., Ltd  
**Address of Applicant:** 8F, Building 5D, Skyworth Innovation Valley, Tangtou Road, Shiyan Street, Baoan District, Shenzhen, 518055 China

**Equipment Under Test (EUT):**  
**Product:** VenusLiv Air Live Stream Camera  
**Model No.:** VenusLiv Air, VenusLiv Lite, VenusLiv , VenusLiv Mini, VenusLiv X Air, VenusLiv X Lite, VenusLive Air, VenusLive Lite, VenusLive, VenusLive Mini, VenusLiv X Air, Venus X Air, Venus X Lite, Venus Air, Venus Lite

**Test Model No.:** VenusLiv Air  
**Brand Name:** HOLLYLAND  
**FCC ID:** 2ADZC-C4702  
**Standards:** 47 CFR Part 15, Subpart C  
**Date of Receipt:** 2023-09-25  
**Date of Test:** 2023-09-25 to 2023-10-11  
**Date of Issue:** 2023-10-18  
**Test Result:** **PASS\***

\*In the configuration tested, the EUT complied with the standards specified above.

**Tested By:**                     Lewis Zhou                      
( Lewis Zhou )

**Reviewed By:**                     Timo Lei                      
( Timo Lei )

**Approved By:**                     Jack Ai                      
( Jack Ai )



## 1 Version

### Revision History Of Report

Report No.	Version	Description	Issue Date
CQASZ20230901740E-01	Rev.01	Initial report	2023-10-18

Here the product #1 means the product version in original FCC grant,

The difference between product #1 and product #2 is that the USB HUB IC chip is added is different.

These changes do not affect RF performance.

This report only contains the test data for product #2. For the test result for product #1, please refer to original test report NO.CQASZ20230500829E

For the fundamental testing items that are not applicable here since the application type is permissive change, please refer to the FCC test report in original grant for the result.

## 2 Test Summary

Test Item	Test Requirement	Test method	Result
Antenna Requirement	47 CFR Part 15, Subpart C Section 15.203/15.247 (c)	ANSI C63.10 2013	PASS
AC Power Line Conducted Emission	47 CFR Part 15, Subpart C Section 15.207	ANSI C63.10 2013	N/A
Conducted Peak Output Power	47 CFR Part 15, Subpart C Section 15.247 (b)(1)	ANSI C63.10 2013	N/A
6dB Occupied Bandwidth	47 CFR Part 15, Subpart C Section 15.247 (a)(2)	ANSI C63.10 2013	N/A
Power Spectral Density	47 CFR Part 15, Subpart C Section 15.247 (e)	ANSI C63.10 2013	N/A
Band-edge for RF Conducted Emissions	47 CFR Part 15, Subpart C Section 15.247(d)	ANSI C63.10 2013	N/A
RF Conducted Spurious Emissions	47 CFR Part 15, Subpart C Section 15.247(d)	ANSI C63.10 2013	N/A
Radiated Spurious Emissions	47 CFR Part 15, Subpart C Section 15.205/15.209	ANSI C63.10 2013	PASS
Restricted bands around fundamental frequency (Radiated Emission)	47 CFR Part 15, Subpart C Section 15.205/15.209	ANSI C63.10 2013	PASS

### 3 Contents

	Page
<b>1 VERSION</b> .....	<b>2</b>
<b>2 TEST SUMMARY</b> .....	<b>3</b>
<b>3 CONTENTS</b> .....	<b>4</b>
<b>4 GENERAL INFORMATION</b> .....	<b>5</b>
4.1 CLIENT INFORMATION .....	5
4.2 GENERAL DESCRIPTION OF EUT .....	5
4.3 ADDITIONAL INSTRUCTIONS .....	7
4.4 TEST ENVIRONMENT .....	8
4.5 DESCRIPTION OF SUPPORT UNITS .....	8
4.6 STATEMENT OF THE MEASUREMENT UNCERTAINTY .....	9
4.7 TEST LOCATION .....	10
4.8 TEST FACILITY .....	10
4.9 DEVIATION FROM STANDARDS .....	10
4.10 OTHER INFORMATION REQUESTED BY THE CUSTOMER .....	10
4.11 EQUIPMENT LIST .....	11
<b>5 TEST RESULTS AND MEASUREMENT DATA</b> .....	<b>12</b>
5.1 ANTENNA REQUIREMENT .....	12
5.2 RADIATED SPURIOUS EMISSION & RESTRICTED BANDS .....	13
5.2.1 <i>Spurious Emissions</i> .....	13
<b>6 PHOTOGRAPHS - EUT TEST SETUP</b> .....	<b>20</b>
6.1 RADIATED SPURIOUS EMISSION .....	20
6.2 CONDUCTED EMISSIONS TEST SETUP .....	21
<b>7 PHOTOGRAPHS - EUT CONSTRUCTIONAL DETAILS</b> .....	<b>22</b>

## 4 General Information

### 4.1 Client Information

Applicant:	Shenzhen Hollyland Technology Co., Ltd
Address of Applicant:	8F, Building 5D, Skyworth Innovation Valley, Tangtou Road, Shiyan Street, Baoan District, Shenzhen, 518055 China
Manufacturer:	Shenzhen Hollyland Technology Co., Ltd
Address of Manufacturer:	8F, Building 5D, Skyworth Innovation Valley, Tangtou Road, Shiyan Street, Baoan District, Shenzhen, 518055 China
Factory:	Shenzhen Hollyland Technology Co., Ltd
Address of Factory:	8F, Building 5D, Skyworth Innovation Valley, Tangtou Road, Shiyan Street, Baoan District, Shenzhen, 518055 China

### 4.2 General Description of EUT

Product Name:	VenusLiv Air Live Stream Camera
Model No.:	VenusLiv Air, VenusLiv Lite, VenusLiv , VenusLiv Mini, VenusLiv X Air, VenusLiv X Lite, VenusLive Air, VenusLive Lite, VenusLive, VenusLive Mini, VenusLiv X Air, Venus X Air, Venus X Lite, Venus Air, Venus Lite
Test Model No.:	VenusLiv Air
Trade Mark:	HOLLYLAND
Software Version:	V1.0.2.0
Hardware Version:	V28
Operation Frequency:	2402MHz~2480MHz
Bluetooth Version:	V5.0
Modulation Type:	GFSK
Transfer Rate:	1Mbps, 2Mbps
Number of Channel:	40
Product Type:	<input checked="" type="checkbox"/> Mobile <input type="checkbox"/> Portable
Test Software of EUT:	QDART
Antenna Type:	FPC antenna
Antenna Gain:	1.74dBi
EUT Power Supply:	Power supply DC12V for adaptor Model:R241-1202000I Input:100-240V~50/60Hz 1.5A Output:12V 2A 24W
Simultaneous Transmission	<input type="checkbox"/> Simultaneous TX is supported and evaluated in this report. <input checked="" type="checkbox"/> Simultaneous TX is not supported.

Operation Frequency each of channel							
Channel	Frequency	Channel	Frequency	Channel	Frequency	Channel	Frequency
0	2402MHz	10	2422MHz	20	2442MHz	30	2462MHz
1	2404MHz	11	2424MHz	21	2444MHz	31	2464MHz
2	2406MHz	12	2426MHz	22	2446MHz	32	2466MHz
3	2408MHz	13	2428MHz	23	2448MHz	33	2468MHz
4	2410MHz	14	2430MHz	24	2450MHz	34	2470MHz
5	2412MHz	15	2432MHz	25	2452MHz	35	2472MHz
6	2414MHz	16	2434MHz	26	2454MHz	36	2474MHz
7	2416MHz	17	2436MHz	27	2456MHz	37	2476MHz
8	2418MHz	18	2438MHz	28	2458MHz	38	2478MHz
9	2420MHz	19	2440MHz	29	2460MHz	39	2480MHz

Note:

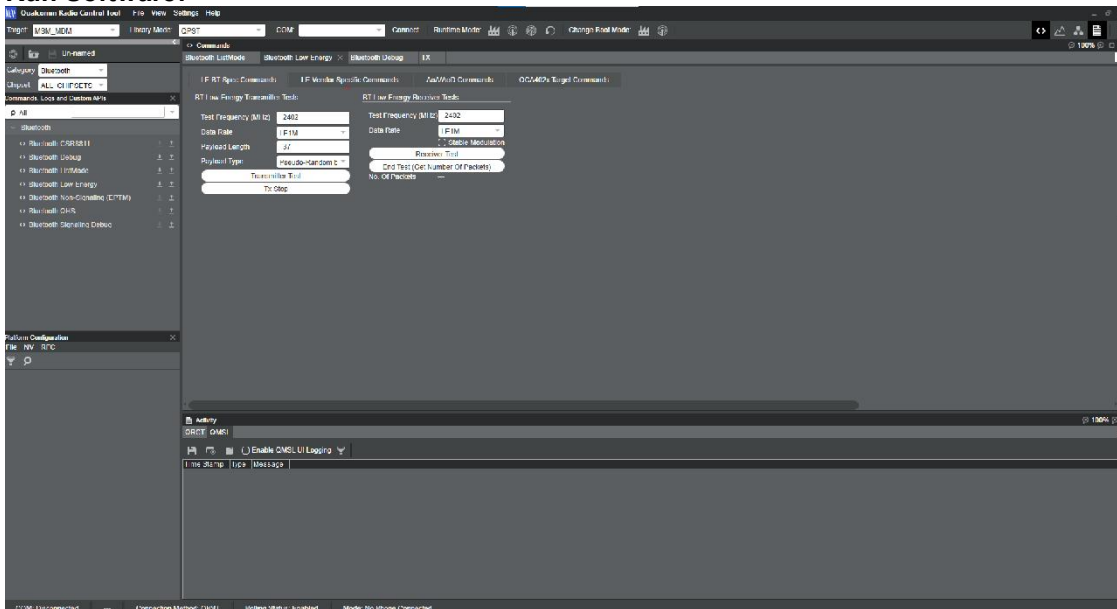
In section 15.31(m), regards to the operating frequency range over 10 MHz, the lowest frequency, the middle frequency, and the highest frequency of channel were selected to perform the test, and the selected channel see below:

Channel	Frequency
The lowest channel (CH0)	2402MHz
The middle channel (CH19)	2440MHz
The highest channel (CH39)	2480MHz

### 4.3 Additional Instructions

EUT Test Software Settings:		
Mode:	<input checked="" type="checkbox"/> Special software is used. <input type="checkbox"/> Through engineering command into the engineering mode. engineering command: <code>###3646633###</code>	
EUT Power level:	Class2 (Power level is built-in set parameters and cannot be changed and selected)	
Use test software to set the lowest frequency, the middle frequency and the highest frequency keep transmitting of the EUT.		
Mode	Channel	Frequency(MHz)
GFSK	CH0	2402
	CH19	2440
	CH39	2480

#### Run Software:



#### 4.4 Test Environment

Operating Environment:	
Temperature:	24.5°C
Humidity:	59% RH
Atmospheric Pressure:	1009mbar
Test Mode:	Use test software to set the lowest frequency, the middle frequency and the highest frequency keep transmitting of the EUT.

#### 4.5 Description of Support Units

The EUT has been tested with associated equipment below.

1) Support equipment

Description	Manufacturer	Model No.	Certification	Supplied by
/	/	/	/	/

2) Cable

Cable No.	Description	Manufacturer	Cable Type/Length	Supplied by
/	/	/	/	/



## 4.6 Statement of the measurement uncertainty

The data and results referenced in this document are true and accurate.

The reader is cautioned that there may be errors within the calibration limits of the equipment and facilities.

The measurement uncertainty was calculated for all measurements listed in this test report acc. to CISPR 16 - 4 „Specification for radio disturbance and immunity measuring apparatus and methods – Part 4: Uncertainty in EMC Measurements“ and is documented in the **Shenzhen Huaxia Testing Technology Co., Ltd.** quality system acc. to DIN EN ISO/IEC 17025.

Furthermore, component and process variability of devices similar to that tested may result in additional deviation. The manufacturer has the sole responsibility of continued compliance of the device.

Hereafter the best measurement capability for CQA laboratory is reported:

No.	Item	Uncertainty
1	Radiated Emission (Below 1GHz)	5.12dB
2	Radiated Emission (Above 1GHz)	4.60dB
3	Conducted Disturbance (0.15~30MHz)	3.34dB
4	Radio Frequency	$3 \times 10^{-8}$
5	Duty cycle	0.6 %
6	Occupied Bandwidth	1.1%
7	RF conducted power	0.86dB
8	RF power density	0.74
9	Conducted Spurious emissions	0.86dB
10	Temperature test	0.8°C
11	Humidity test	2.0%
12	Supply voltages	0.5 %
13	Frequency Error	5.5 Hz

## 4.7 Test Location

All tests were performed at:

Shenzhen Huaxia Testing Technology Co., Ltd.

1F., Block A of Tongsheng Technology Building, Huahui Road, Dalang Street, Longhua District, Shenzhen, China

## 4.8 Test Facility

- **A2LA (Certificate No. 4742.01)**

Shenzhen Huaxia Testing Technology Co., Ltd., Shenzhen EMC Laboratory is accredited by the American Association for Laboratory Accreditation(A2LA). Certificate No. 4742.01.

- **FCC Registration No.: 522263**

Shenzhen Huaxia Testing Technology Co., Ltd., Shenzhen EMC Laboratory has been registered and fully described in a report filed with the (FCC) Federal Communications Commission. The acceptance letter from the FCC is maintained in our files. Registration No.:522263

## 4.9 Deviation from Standards

None.

## 4.10 Other Information Requested by the Customer

None.

## 4.11 Equipment List

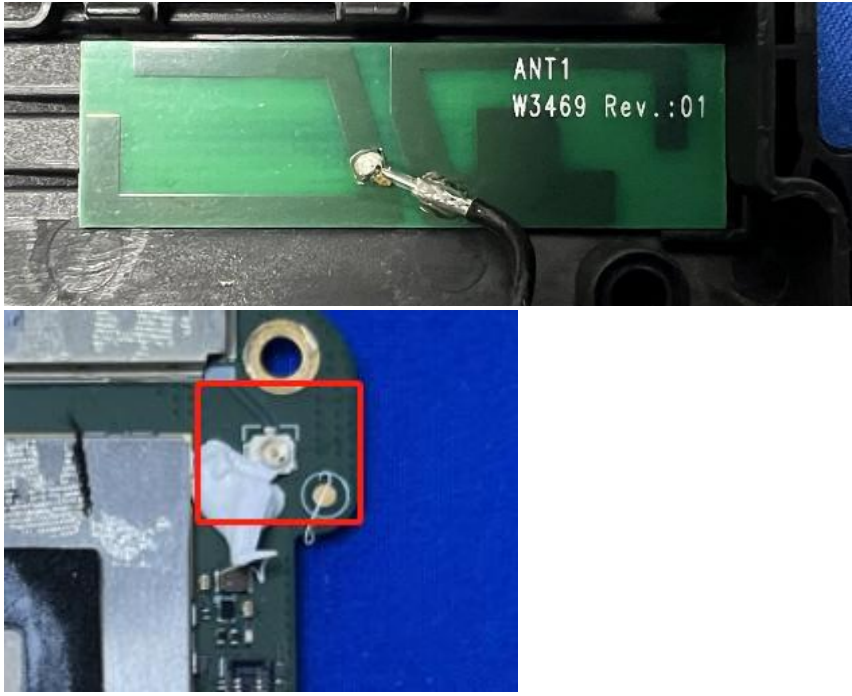
Test Equipment	Manufacturer	Model No.	Instrument No.	Calibration Date	Calibration Due Date
EMI Test Receiver	R&S	ESR7	CQA-005	2022/09/09	2023/09/08
Spectrum analyzer	R&S	FSU26	CQA-038	2022/09/09	2023/09/08
Spectrum analyzer	R&S	FSU40	CQA-075	2022/09/09	2023/09/08
Preamplifier	MITEQ	AFS4-00010300-18-10P-4	CQA-035	2022/09/09	2023/09/08
Preamplifier	MITEQ	AMF-6D-02001800-29-20P	CQA-036	2022/09/09	2023/09/08
Preamplifier	EMCI	EMC184055SE	CQA-089	2022/09/09	2023/09/08
Loop antenna	Schwarzbeck	FMZB1516	CQA-060	2021/09/16	2024/09/15
Bilog Antenna	R&S	HL562	CQA-011	2021/09/16	2024/09/15
Horn Antenna	R&S	HF906	CQA-012	2021/09/16	2024/09/15
Horn Antenna	Schwarzbeck	BBHA 9170	CQA-088	2021/09/16	2024/09/15
Coaxial Cable (Above 1GHz)	CQA	N/A	C007	2022/09/09	2023/09/08
Coaxial Cable (Below 1GHz)	CQA	N/A	C013	2022/09/09	2023/09/08
RF cable(9KHz~40GHz)	CQA	RF-01	CQA-079	2022/09/09	2023/09/08
Antenna Connector	CQA	RFC-01	CQA-080	2022/09/09	2023/09/08
Power Sensor	KEYSIGHT	U2021XA	CQA-30	2022/09/09	2023/09/08
N1918A Power Analysis Manager Power Panel	Agilent	N1918A	CQA-074	2022/09/09	2023/09/08
Power meter	R&S	NRVD	CQA-029	2022/09/09	2023/09/08
Power divider	MIDWEST	PWD-2533-02-SMA-79	CQA-067	2022/09/09	2023/09/08
EMI Test Receiver	R&S	ESR7	CQA-005	2022/09/09	2023/09/08
LISN	R&S	ENV216	CQA-003	2022/09/09	2023/09/08
Coaxial cable	CQA	N/A	CQA-C009	2022/09/09	2023/09/08
DC power	KEYSIGHT	E3631A	CQA-028	2022/09/09	2023/09/08

Note:

The temporary antenna connector is soldered on the pcb board in order to perform conducted tests and this temporary antenna connector is listed in the equipment list.

## 5 Test results and Measurement Data

### 5.1 Antenna Requirement

<p><b>Standard requirement:</b></p>	<p>47 CFR Part 15C Section 15.203 /247(c)</p>
<p>15.203 requirement:  An intentional radiator shall be designed to ensure that no antenna other than that furnished by the responsible party shall be used with the device. The use of a permanently attached antenna or of an antenna that uses a unique coupling to the intentional radiator, the manufacturer may design the unit so that a broken antenna can be replaced by the user, but the use of a standard antenna jack or electrical connector is prohibited.</p> <p>15.247(b) (4) requirement:  The conducted output power limit specified in paragraph (b) of this section is based on the use of antennas with directional gains that do not exceed 6 dBi. Except as shown in paragraph (c) of this section, if transmitting antennas of directional gain greater than 6 dBi are used, the conducted output power from the intentional radiator shall be reduced below the stated values in paragraphs (b)(1), (b)(2), and (b)(3) of this section, as appropriate, by the amount in dB that the directional gain of the antenna exceeds 6 dBi.</p>	
<p><b>EUT Antenna:</b></p>	
<p>The antenna is FPC antenna.  The connection/connection type between the antenna to the EUT's antenna port is: unique coupling.  This is either permanently attachment or a unique coupling that satisfies the requirement.</p>	

## 5.2 Radiated Spurious Emission & Restricted bands

5.2.1 Spurious Emissions					
Test Requirement:	47 CFR Part 15C Section 15.209 and 15.205				
Test Method:	ANSI C63.10 2013				
Test Site:	Measurement Distance: 3m (Semi-Anechoic Chamber)				
Receiver Setup:	Frequency	Detector	RBW	VBW	Remark
	0.009MHz-0.090MHz	Peak	10kHz	30kHz	Peak
	0.009MHz-0.090MHz	Average	10kHz	30kHz	Average
	0.090MHz-0.110MHz	Quasi-peak	10kHz	30kHz	Quasi-peak
	0.110MHz-0.490MHz	Peak	10kHz	30kHz	Peak
	0.110MHz-0.490MHz	Average	10kHz	30kHz	Average
	0.490MHz -30MHz	Quasi-peak	10kHz	30kHz	Quasi-peak
	30MHz-1GHz	Quasi-peak	100 kHz	300kHz	Quasi-peak
	Above 1GHz	Peak	1MHz	3MHz	Peak
Peak		1MHz	10Hz	Average	
Limit:	Frequency	Field strength (microvolt/meter)	Limit (dBuV/m)	Remark	Measurement distance (m)
	0.009MHz-0.490MHz	2400/F(kHz)	-	-	300
	0.490MHz-1.705MHz	24000/F(kHz)	-	-	30
	1.705MHz-30MHz	30	-	-	30
	30MHz-88MHz	100	40.0	Quasi-peak	3
	88MHz-216MHz	150	43.5	Quasi-peak	3
	216MHz-960MHz	200	46.0	Quasi-peak	3
	960MHz-1GHz	500	54.0	Quasi-peak	3
	Above 1GHz	500	54.0	Average	3
<p>Note: 15.35(b), Unless otherwise specified, the limit on peak radio frequency emissions is 20dB above the maximum permitted average emission limit applicable to the equipment under test. This peak limit applies to the total peak emission level radiated by the device.</p>					

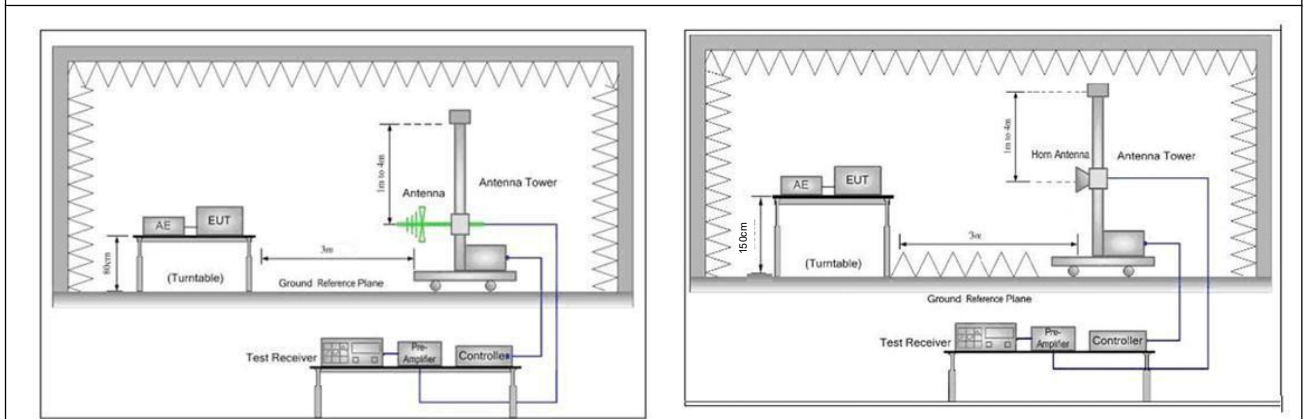
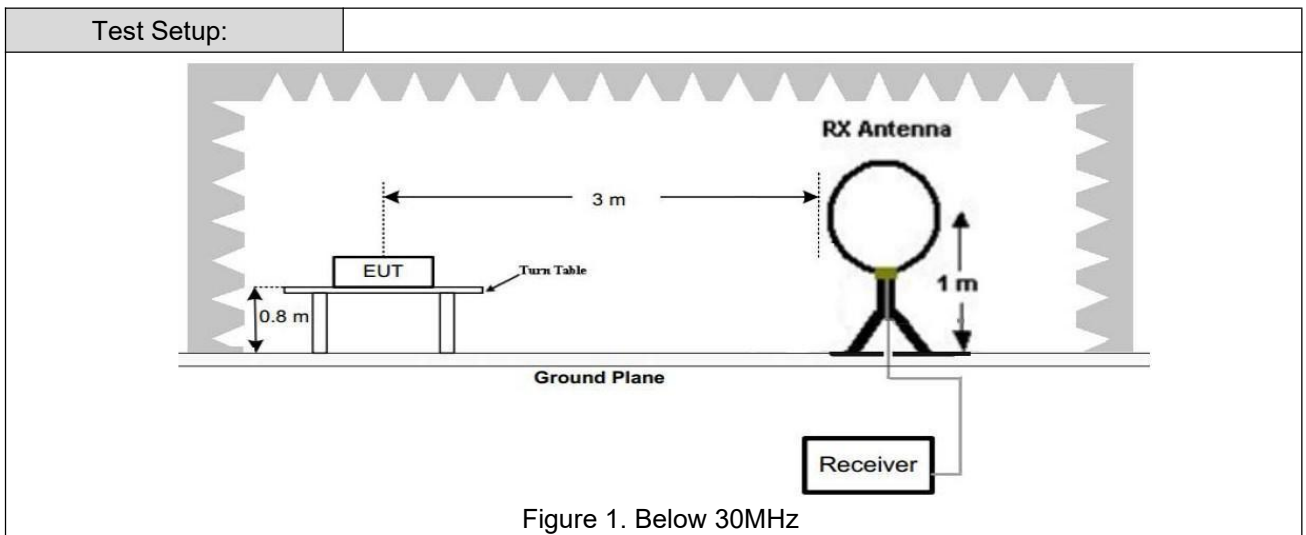


Figure 2. 30MHz to 1GHz

Figure 3. Above 1 GHz

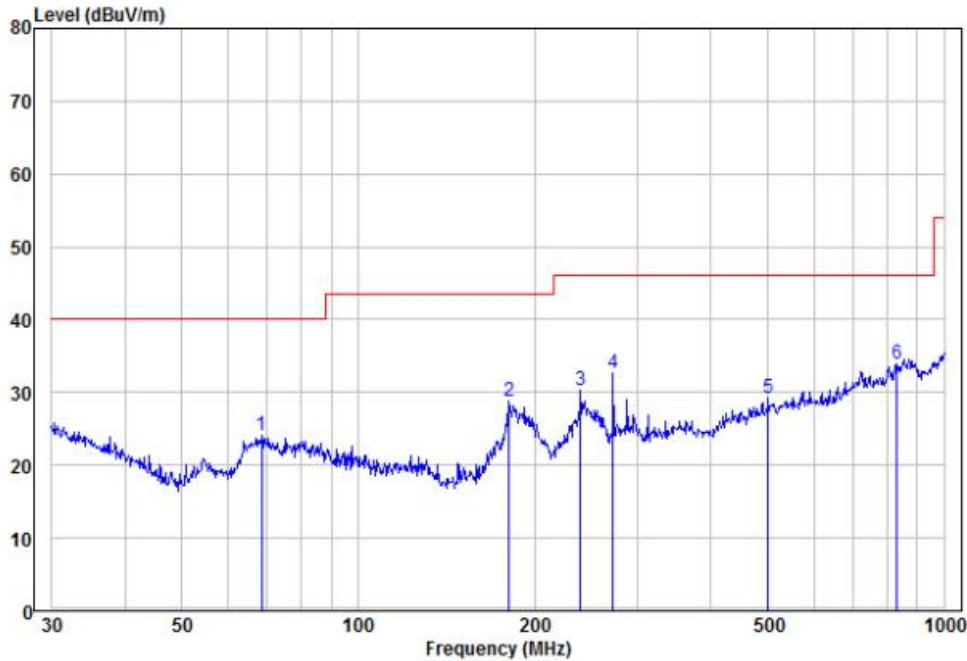
<p>Test Procedure:</p>	<ol style="list-style-type: none"> <li>a. 1) Below 1G: The EUT was placed on the top of a rotating table 0.8 meters above the ground at a 3 meter semi-anechoic chamber. The table was rotated 360 degrees to determine the position of the highest radiation.</li> <li>2) Above 1G: The EUT was placed on the top of a rotating table 1.5 meters above the ground at a 3 meter semi-anechoic chamber. The table was rotated 360 degrees to determine the position of the highest radiation.</li> </ol> <p>Note: For the radiated emission test above 1GHz:</p> <p>Place the measurement antenna away from each area of the EUT determined to be a source of emissions at the specified measurement distance, while keeping the measurement antenna aimed at the source of emissions at each frequency of significant emissions, with polarization oriented for maximum response. The measurement antenna may have to be higher or lower than the EUT, depending on the radiation pattern of the emission and staying aimed at the emission source for receiving the maximum signal. The final measurement antenna elevation shall be that which maximizes the emissions. The measurement antenna elevation for maximum emissions shall be restricted to a range of heights of from 1 m to 4 m above the ground or reference ground plane.</p> <ol style="list-style-type: none"> <li>b. The EUT was set 3 meters away from the interference-receiving antenna, which was mounted on the top of a variable-height antenna tower.</li> <li>c. The antenna height is varied from one meter to four meters above the ground to determine the maximum value of the field strength. Both</li> </ol>
------------------------	--

	<p>horizontal and vertical polarizations of the antenna are set to make the measurement.</p> <p>d. For each suspected emission, the EUT was arranged to its worst case and then the antenna was tuned to heights from 1 meter to 4 meters (for the test frequency of below 30MHz, the antenna was tuned to heights 1 meter) and the rotatable table was turned from 0 degrees to 360 degrees to find the maximum reading.</p> <p>e. The test-receiver system was set to Peak Detect Function and Specified Bandwidth with Maximum Hold Mode.</p> <p>f. If the emission level of the EUT in peak mode was 10dB lower than the limit specified, then testing could be stopped and the peak values of the EUT would be reported. Otherwise the emissions that did not have 10dB margin would be re-tested one by one using peak, quasi-peak or average method as specified and then reported in a data sheet.</p> <p>g. Test the EUT in the lowest channel (2402MHz),the middle channel (2440MHz),the Highest channel (2480MHz)</p> <p>h. The radiation measurements are performed in X, Y, Z axis positioning for Transmitting mode, and found the X axis positioning which it is the worst case.</p> <p>i. Repeat above procedures until all frequencies measured was complete.</p>
<p>Exploratory Test Mode:</p>	<p>Transmitting with GFSK modulation. Transmitting mode.</p>
<p>Final Test Mode:</p>	<p>Through Pre-scan, find the 1Mbps of data type and GFSK modulation is the worst case. For below 1GHz part, through pre-scan, the worst case is the highest channel. Only the worst case is recorded in the report.</p>
<p>Test Results:</p>	<p>Pass</p>

Radiated Emission below 1GHz

30MHz~1GHz, the worst case

Test mode: Transmitting mode Horizontal



	Read Freq	Read Level	Factor	Limit Level	Over Limit	Remark	Pol/Phase
	MHz	dBuV	dB/m	dBuV/m	dBuV/m	dB	
1	68.39	16.53	7.65	24.18	40.00	-15.82 Peak	HORIZONTAL
2	181.28	20.47	8.30	28.77	43.50	-14.73 Peak	HORIZONTAL
3	239.99	18.65	11.56	30.21	46.00	-15.79 Peak	HORIZONTAL
4	272.28	19.81	12.81	32.62	46.00	-13.38 Peak	HORIZONTAL
5	501.18	11.00	18.29	29.29	46.00	-16.71 Peak	HORIZONTAL
6 pp	830.40	10.14	23.70	33.84	46.00	-12.16 Peak	HORIZONTAL

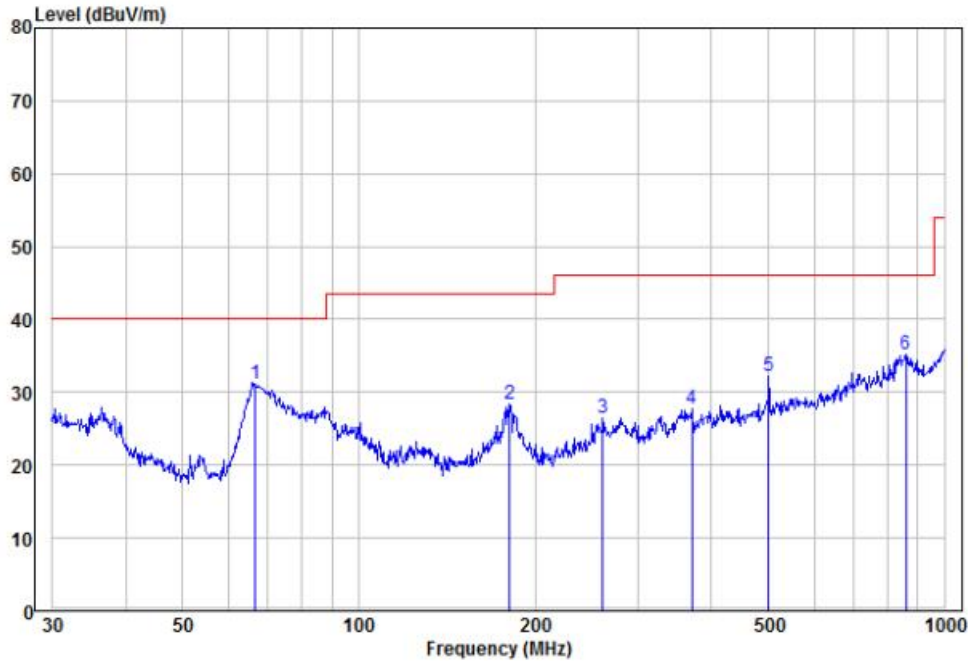


30MHz~1GHz, the worst case

Test mode:

Transmitting mode

Vertical



	Read Freq	Read Level	Factor	Limit Level	Limit Line	Over Limit	Remark	Pol/Phase
	MHz	dBuV	dB/m	dBuV/m	dBuV/m	dB		
1	pp	66.50	24.13	7.05	31.18	40.00	-8.82 Peak	VERTICAL
2		181.28	20.11	8.30	28.41	43.50	-15.09 Peak	VERTICAL
3		261.06	14.02	12.44	26.46	46.00	-19.54 Peak	VERTICAL
4		370.70	12.37	15.31	27.68	46.00	-18.32 Peak	VERTICAL
5		501.18	14.01	18.29	32.30	46.00	-13.70 Peak	VERTICAL
6		860.04	11.27	24.01	35.28	46.00	-10.72 Peak	VERTICAL

Transmitter Emission above 1GHz

Worse case mode:		GFSK(1Mbps)		Test channel:		Lowest	
Frequency	Meter Reading	Factor	Emission Level	Limits	Over	Detector Type	Ant. Pol.
(MHz)	(dBμV)	(dB)	(dBμV/m)	(dBμV/m)	(dB)		H/V
<b>2390</b>	55.84	-9.2	46.64	74	-27.36	<b>Peak</b>	<b>H</b>
2400	57.14	-9.39	47.75	74	-26.25	Peak	H
4804	52.96	-4.33	48.63	74	-25.37	Peak	H
7206	49.33	1.01	50.34	74	-23.66	Peak	H
<b>2390</b>	53.48	-9.2	44.28	74	-29.72	<b>Peak</b>	<b>V</b>
2400	56.01	-9.39	46.62	74	-27.38	Peak	V
4804	53.99	-4.33	49.66	74	-24.34	Peak	V
7206	51.18	1.01	52.19	74	-21.81	Peak	V

Worse case mode:		GFSK(1Mbps)		Test channel:		Middle	
Frequency	Meter Reading	Factor	Emission Level	Limits	Over	Detector Type	Ant. Pol.
(MHz)	(dBμV)	(dB)	(dBμV/m)	(dBμV/m)	(dB)		H/V
4880	52.33	-4.11	48.22	74	-25.78	peak	H
7320	49.06	1.51	50.57	74	-23.43	peak	H
4880	52.32	-4.11	48.21	74	-25.79	peak	V
7320	48.76	1.51	50.27	74	-23.73	peak	V

Worse case mode:		GFSK(1Mbps)		Test channel:		Highest	
Frequency	Meter Reading	Factor	Emission Level	Limits	Over	Detector Type	Ant. Pol.
(MHz)	(dBμV)	(dB)	(dBμV/m)	(dBμV/m)	(dB)		H/V
<b>2483.5</b>	55.48	-9.29	46.19	74	-27.81	<b>Peak</b>	<b>H</b>
4960	50.96	-4.04	46.92	74	-27.08	Peak	H
7440	48.63	1.57	50.20	74	-23.80	Peak	H
<b>2483.5</b>	56.24	-9.29	46.95	74	-27.05	<b>Peak</b>	<b>V</b>
4960	48.57	-4.04	44.53	74	-29.47	Peak	V
7440	51.14	1.57	52.71	74	-21.29	Peak	V

Worse case mode:		GFSK(2Mbps)		Test channel:		Lowest	
Frequency	Meter Reading	Factor	Emission Level	Limits	Over	Detector Type	Ant. Pol.
(MHz)	(dBμV)	(dB)	(dBμV/m)	(dBμV/m)	(dB)		H/V
<b>2390</b>	55.52	-9.2	46.32	74	-27.68	<b>Peak</b>	<b>H</b>
2400	55.64	-9.39	46.25	74	-27.75	Peak	H
4804	52.05	-4.33	47.72	74	-26.28	Peak	H
7206	49.49	1.01	50.50	74	-23.50	Peak	H
<b>2390</b>	53.40	-9.2	44.20	74	-29.80	<b>Peak</b>	<b>V</b>
2400	51.11	-9.39	41.72	74	-32.28	Peak	V
4804	54.09	-4.33	49.76	74	-24.24	Peak	V
7206	50.93	1.01	51.94	74	-22.06	Peak	V

Worse case mode:		GFSK(2Mbps)		Test channel:		Middle	
Frequency	Meter Reading	Factor	Emission Level	Limits	Over	Detector Type	Ant. Pol.
(MHz)	(dBμV)	(dB)	(dBμV/m)	(dBμV/m)	(dB)		H/V
4880	52.59	-4.11	48.48	74	-25.52	peak	H
7320	51.04	1.51	52.55	74	-21.45	peak	H
4880	52.13	-4.11	48.02	74	-25.98	peak	V
7320	48.29	1.51	49.80	74	-24.20	peak	V

Worse case mode:		GFSK(2Mbps)		Test channel:		Highest	
Frequency	Meter Reading	Factor	Emission Level	Limits	Over	Detector Type	Ant. Pol.
(MHz)	(dBμV)	(dB)	(dBμV/m)	(dBμV/m)	(dB)		H/V
<b>2483.5</b>	55.90	-9.29	46.61	74	-27.39	<b>Peak</b>	<b>H</b>
4960	52.94	-4.04	48.90	74	-25.10	Peak	H
7440	48.89	1.57	50.46	74	-23.54	Peak	H
<b>2483.5</b>	55.97	-9.29	46.68	74	-27.32	<b>Peak</b>	<b>V</b>
4960	50.21	-4.04	46.17	74	-27.83	Peak	V
7440	50.35	1.57	51.92	74	-22.08	Peak	V

Remark:

- The field strength is calculated by adding the Antenna Factor, Cable Factor & Preamplifier. The basic equation with a sample calculation is as follows:  
Final Test Level = Receiver Reading + Antenna Factor + Cable Factor – Preamplifier Factor
- Scan from 9kHz to 25GHz, the disturbance above 10GHz and below 30MHz was very low. As shown in this section, for frequencies above 1GHz, the field strength limits are based on average limits. However, the peak field strength of any emission shall not exceed the maximum permitted average limits specified above by more than 20 dB under any condition of modulation. So, only the peak measurements were shown in the report.

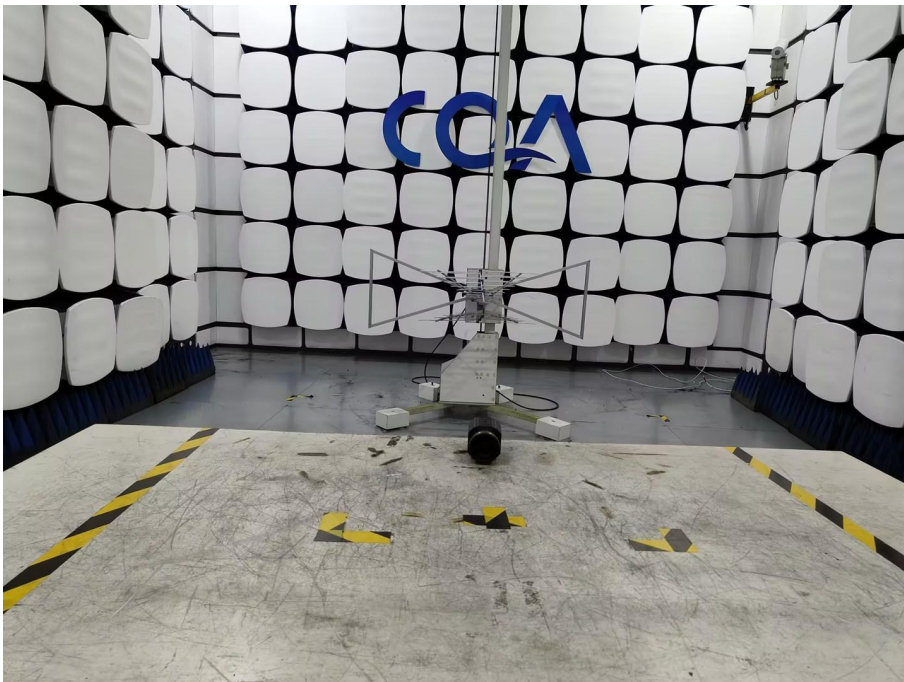
## 6 Photographs - EUT Test Setup

### 6.1 Radiated Spurious Emission

9kHz~30MHz:



30MHz~1GHz:





Above 1GHz:



## 6.2 Conducted Emissions Test Setup



## 7 Photographs - EUT Constructional Details



1#

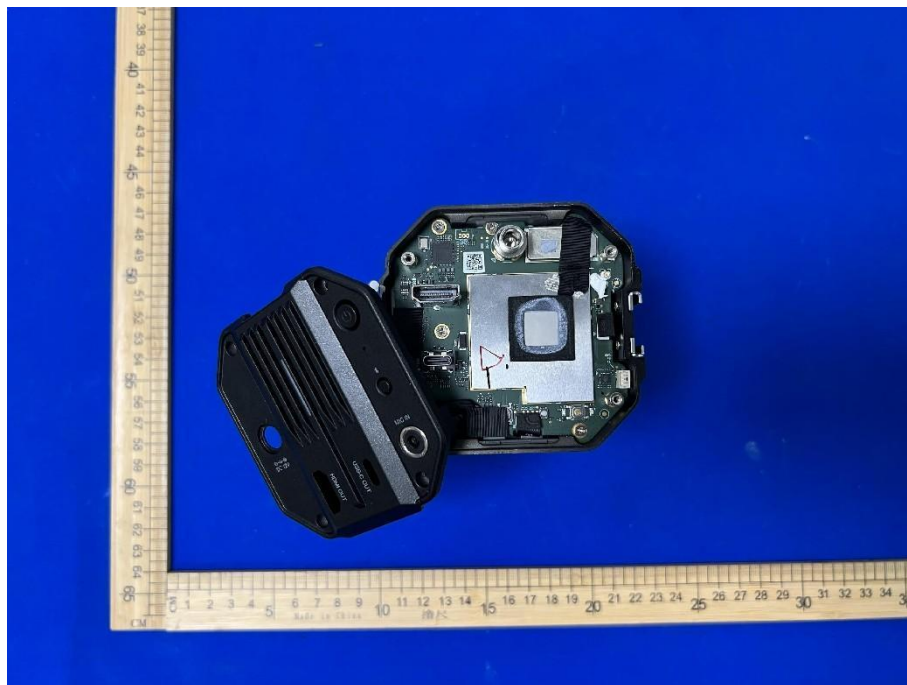
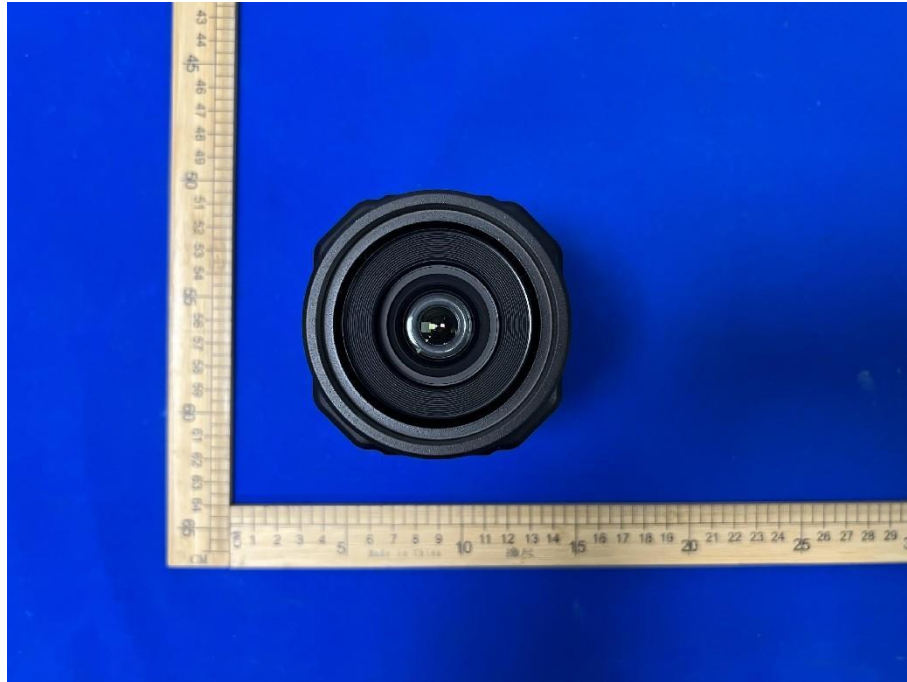


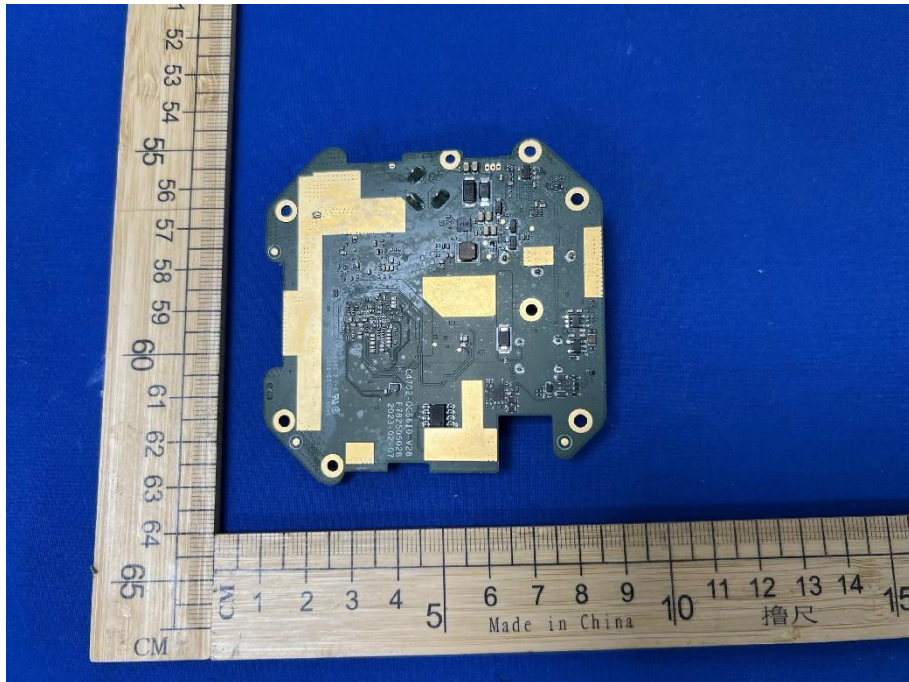
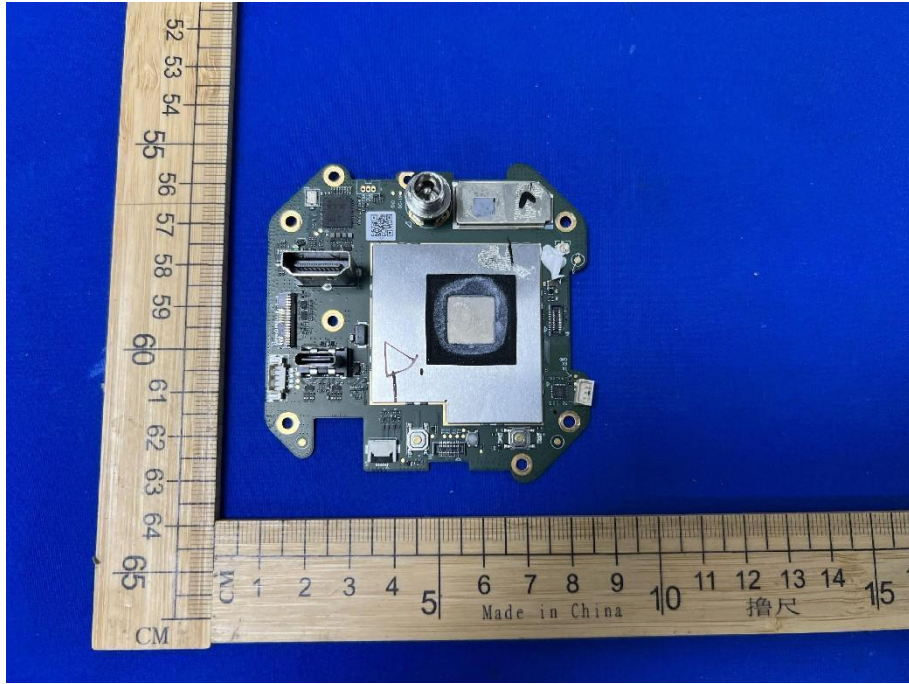




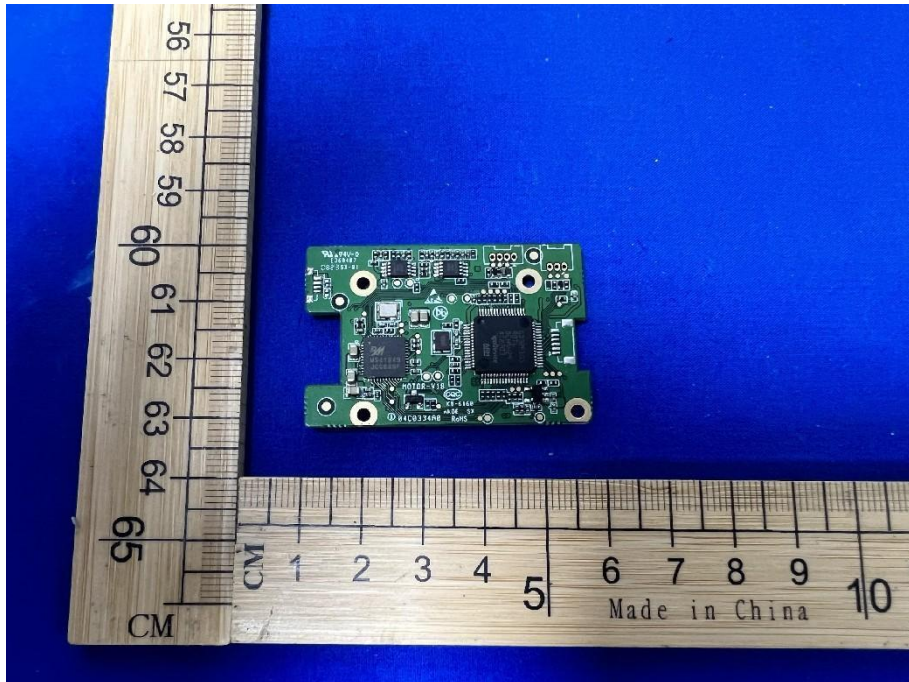
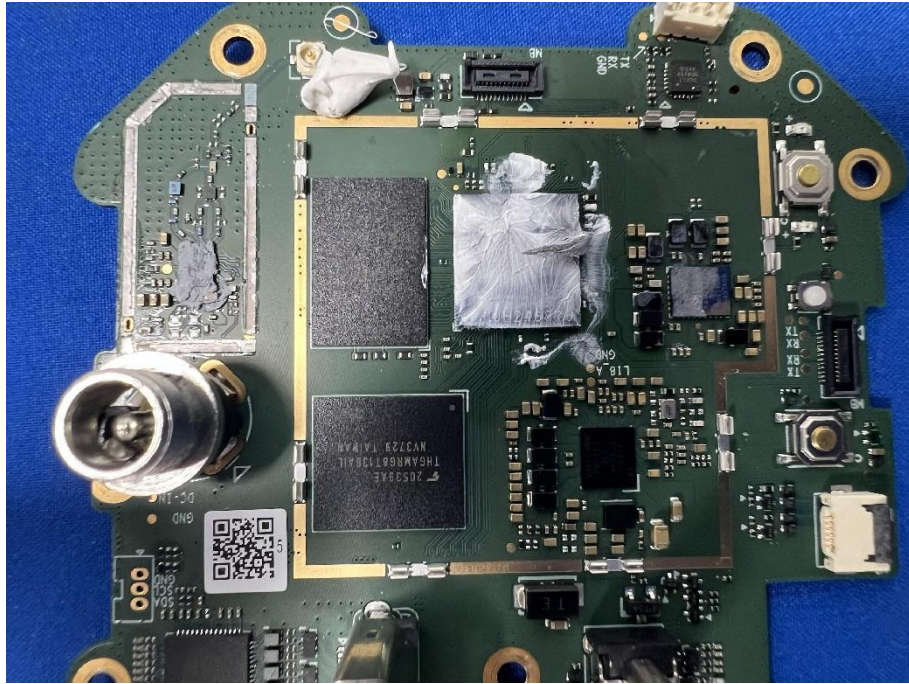


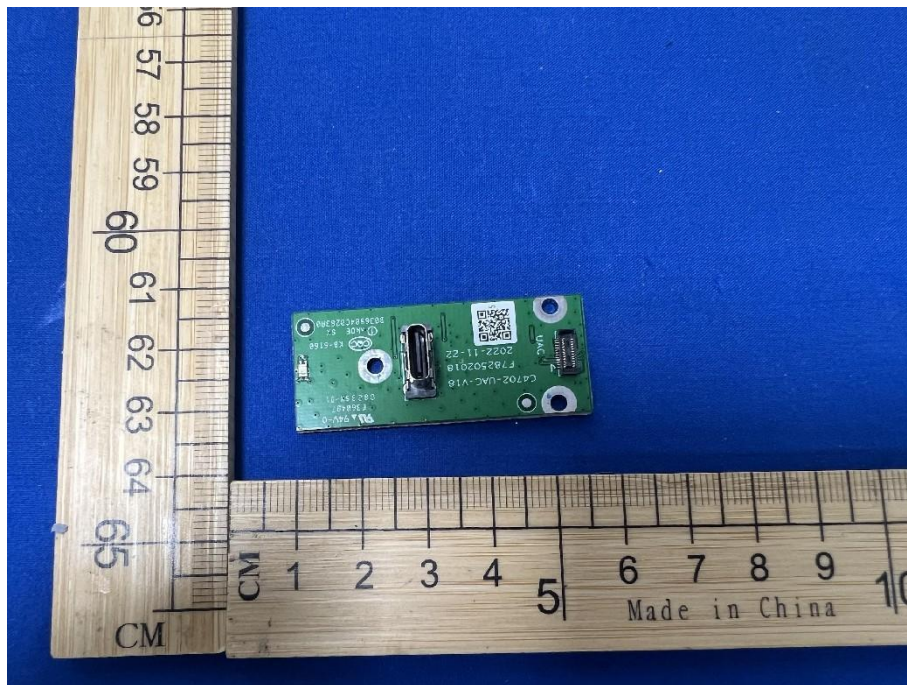
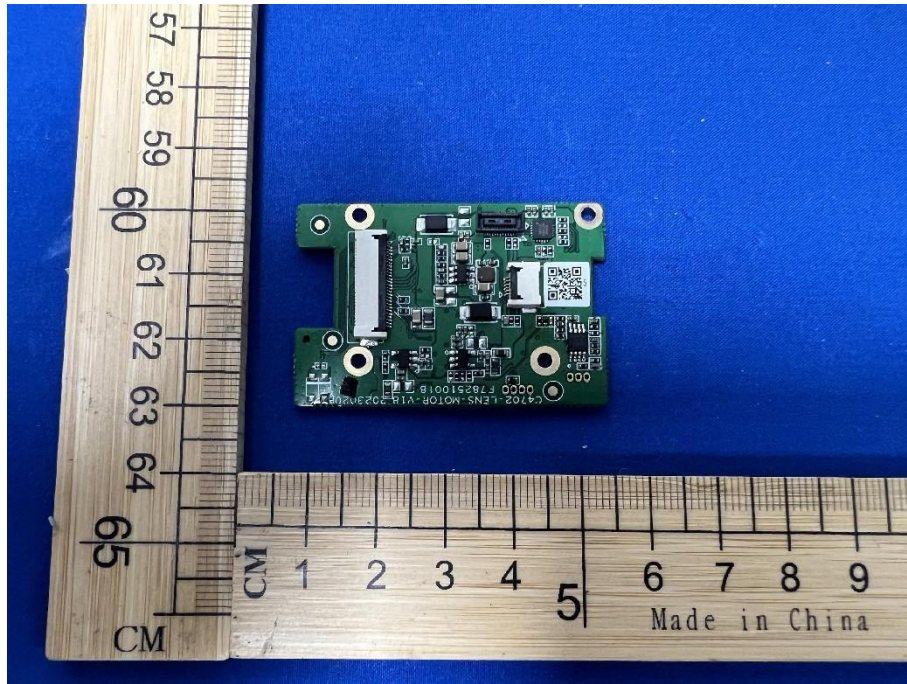




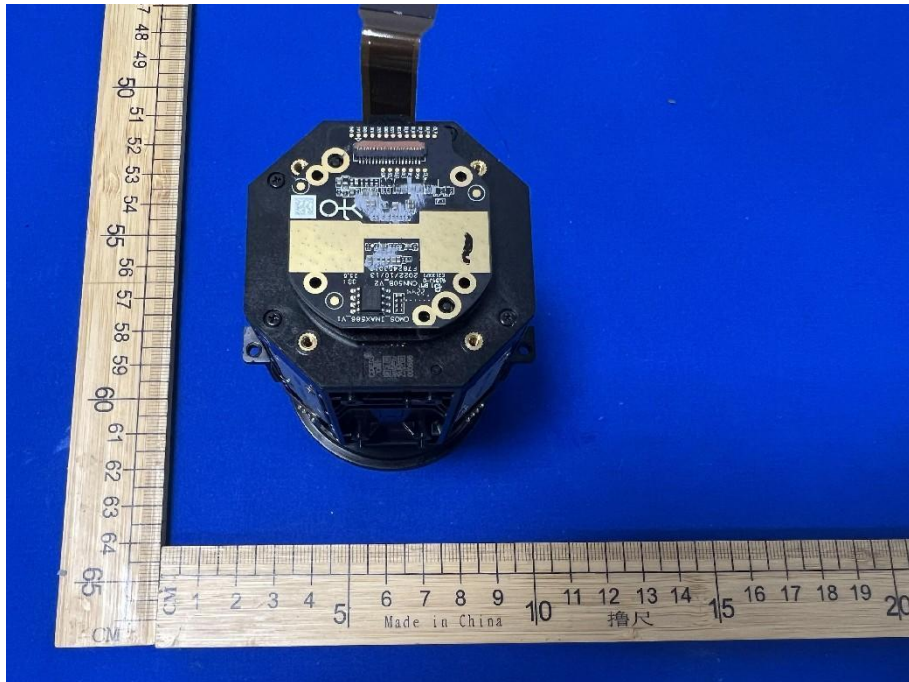
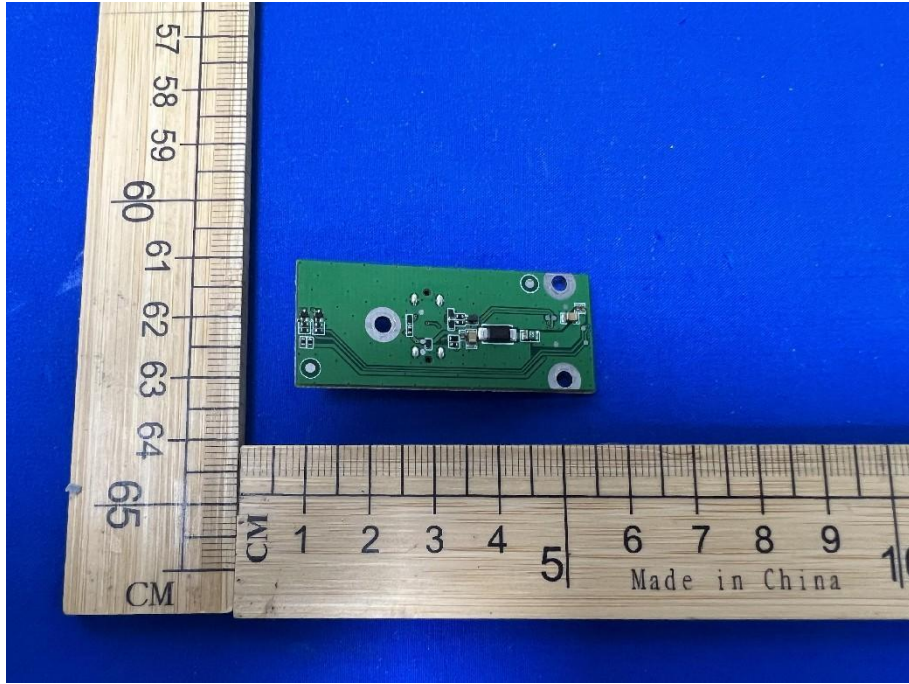








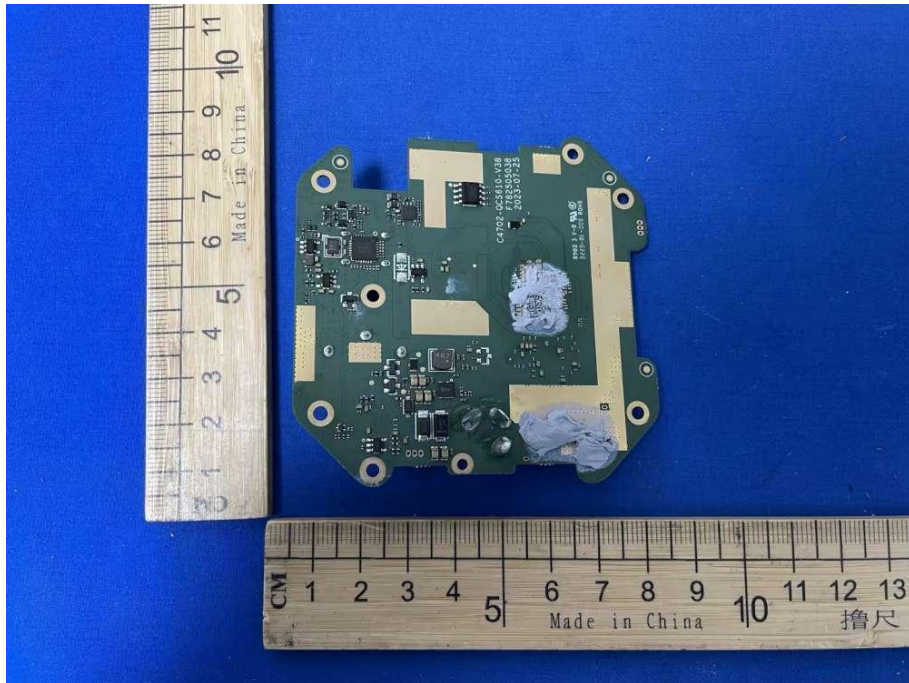
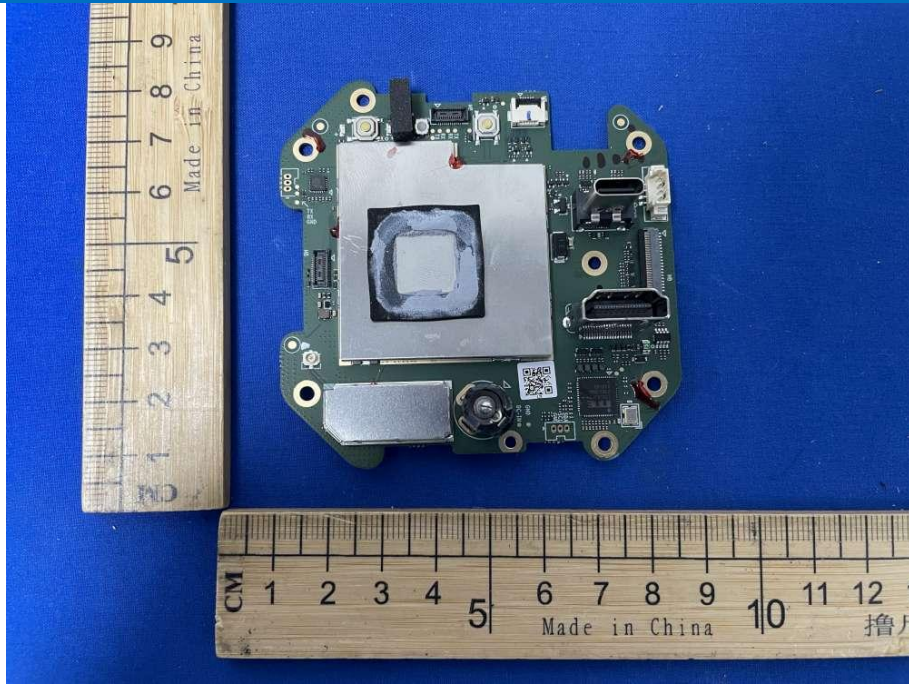




2#







\*\*\* END OF REPORT \*\*\*