


FCC Report


Application Purpose : Original grant
Applicant Name: : TECNO MOBILE LIMITED
FCC ID : 2ADYY-W4
Equipment Type : Mobile phone
Model Name : W4
Report Number : FCC16083893A-4
Standard(S) : FCC Part 15 Subpart C
Date Of Receipt : August 11, 2016
Date Of Issue : August 24, 2016

Test By : 

(Daisy Qin)

Reviewed By : 

(Sol Qin)

Authorized by : 

(Michal Ling)

Prepared by : **QTC Certification & Testing Co., Ltd.**
2nd Floor,Bl Building,Fengyeyuan Industrial Plant,,
Liuxian 2st. Road, Xin'an Street, Bao'an
District,,Shenzhen,518000
Registration Number: 588523

REPORT REVISE RECORD

Report Version	Revise Time	Issued Date	Valid Version	Notes
V1.0	/	August 24, 2016	Valid	Original Report
V1.1	September 02, 2016	August 24, 2016	Valid	Original Report

Table of Contents	Page
1. GENERAL INFORMATION	4
2. TEST DESCRIPTION	6
2.1 MEASUREMENT UNCERTAINTY	6
2.2 DESCRIPTION OF TEST MODES	7
2.3 CONFIGURATION OF SYSTEM UNDER TEST	8
2.4 DESCRIPTION OF SUPPORT UNITS (CONDUCTED MODE)	8
3. SUMMARY OF TEST RESULTS	10
4. MEASUREMENT INSTRUMENTS	11
5. EMC EMISSION TEST	12
5.1 CONDUCTED EMISSION MEASUREMENT	12
5.1.1 POWER LINE CONDUCTED EMISSION LIMITS	12
5.1.2 TEST PROCEDURE	13
5.1.3 DEVIATION FROM TEST STANDARD	13
5.1.4 TEST SETUP	13
5.1.5 EUT OPERATING CONDITIONS	13
5.1.6 TEST RESULTS	14
5.2 RADIATED EMISSION MEASUREMENT	20
5.2.1 RADIATED EMISSION LIMITS	20
5.2.2 TEST PROCEDURE	21
5.2.3 DEVIATION FROM TEST STANDARD	21
5.2.4 TEST SETUP	22
5.2.5 EUT OPERATING CONDITIONS	22
5.2.5.1 TEST RESULTS (BETWEEN 30M – 1000 MHZ)	23
5.2.5.2 TEST RESULTS(1GHZ TO 6GHZ)	29
6. EUT TEST PHOTO	32
7. PHOTOGRAPHS OF EUT	34

1. GENERAL INFORMATION

Test Model	W4
Applicant	TECNO MOBILE LIMITED
Address	ROOMS 05-15, 13A/F., SOUTH TOWER,WORLD FINANCE CENTRE, HARBOUR CITY, 17 CANTON ROAD, TSIM SHA TSUI, KOWLOON, HONG KONG
Manufacturer	SHENZHEN TECNO TECHNOLOGY CO.,LTD.
Address	1-4th Floor,3rd Building,Pacific Industrial Park,No.2088,Shenyan Road,Yantian District,Shenzhen,Guangdong,China
Equipment Type	Mobile phone
Brand Name	TECNO
Hardware	AW875L-MB-BOM-V2.01
Software	W4-AW875C1-M-160721V1
Battery information:	Li-ion Battery : BL-AW875A Voltage: 3.8V Capacity: 3000mAh Limited Charge Voltage: 4.35V
Adapter Information:	Adapter: A8-501000 Input: AC 100-240VAC 50/60Hz 0.2A Output: DC 5V 1A
Data of receipt	August 11, 2016
Date of test	August 11, 2016 to August 30, 2016
Deviation	None
Condition of Test Sample	Normal

We hereby certify that:

The above equipment was tested by QTC Certification & Testing Co., Ltd.

2nd Floor, BI Building, Fengyeyuan Industrial Plant, Liuxian 2st. Road, Xin'an Street, Bao'an District, Shenzhen, 518000

Registration Number: 588523

The data evaluation, test procedures, and equipment configurations shown in this report were made in accordance with the procedures given in ANSI C 63.4:2014. The sample tested as described in this report is in compliance with the FCC Rules Part 15 Subpart B.

The test results of this report relate only to the tested sample identified in this report.

2. TEST DESCRIPTION

2.1 MEASUREMENT UNCERTAINTY

The reported uncertainty of measurement $y \pm U$, where expanded uncertainty U is based on a standard uncertainty multiplied by a coverage factor of $k=2$, providing a level of confidence of approximately **95** %.

No.	Item	Uncertainty
1	Conducted Emission Test	$\pm 3.2\text{dB}$
2	RF power, conducted	$\pm 0.16\text{dB}$
3	Spurious emissions, conducted	$\pm 0.21\text{dB}$
4	All emissions, radiated(<1G)	$\pm 4.7\text{dB}$
5	All emissions, radiated(>1G)	$\pm 4.7\text{dB}$
6	Temperature	$\pm 0.5^\circ\text{C}$
7	Humidity	$\pm 2\%$

2.2 DESCRIPTION OF TEST MODES

To investigate the maximum EMI emission characteristics generates from EUT, the test system was pre-scanning tested base on the consideration of following EUT operation mode or test configuration mode which possible have effect on EMI emission level. Each of these EUT operation mode(s) or test configuration mode(s) mentioned above was evaluated respectively.

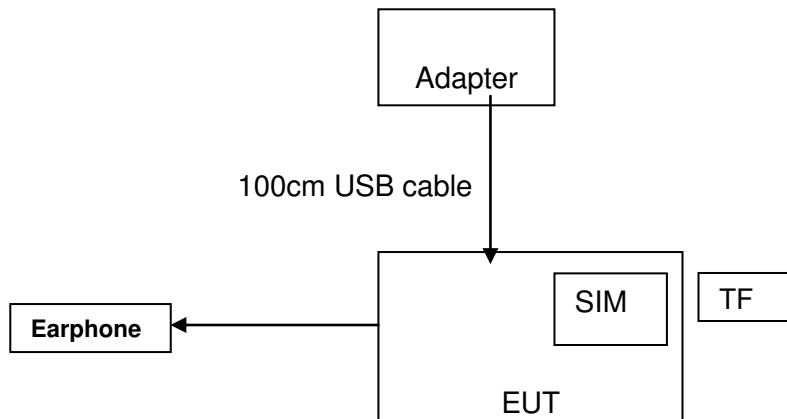
Pretest Mode	Description
Mode 1	Video Recording
Model 2	Video Playing
Mode 3	Exchange data with computer

For Conducted Emission	
Final Test Mode	Test with Keyboard and Mouse
Mode 1	Video Recording
Model 2	Video Playing
Mode 3	Exchange data with computer

For Radiated Emission	
Final Test Mode	Test with Keyboard and Mouse
Mode 1	Video Recording
Model 2	Video Playing
Mode 3	Exchange data with computer

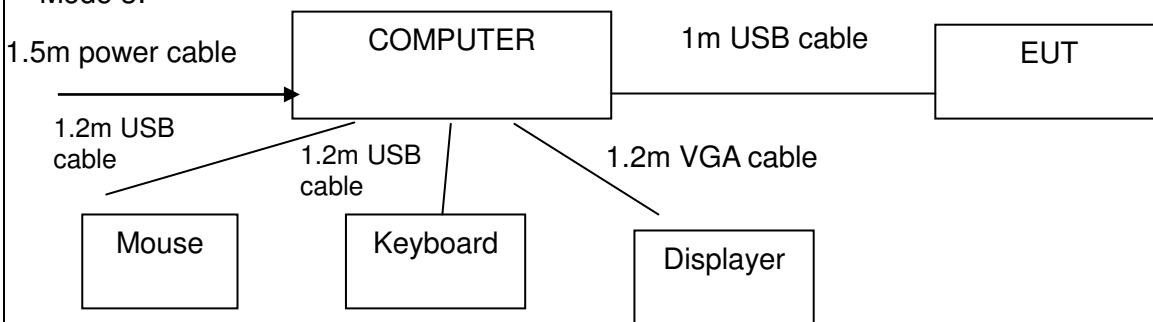
2.3 CONFIGURATION OF SYSTEM UNDER TEST

Mode 1&2:



(EUT: Mobile phone)

Mode 3:



(EUT: Mobile phone)

I/O Port of EUT			
I/O Port Type	Q'TY	Cable	Tested with
Power	1	1m USB cable, unshielded	1
Earphone	1	1m USB cable, unshielded	1

2.4 DESCRIPTION OF SUPPORT UNITS (CONDUCTED MODE)

The EUT has been tested as an independent unit together with other necessary accessories or support units. The following support units or accessories were used to form a representative test configuration during the tests.

Item	Equipment	Mfr/Brand	Model/Type No.	Series No.	Note
1	Adapter	/	A8-501000	/	/
2	Keyboard	HP	SK-2880	435302-AA-	/
3	Mouse	DELL	MS111-1	/	/

Note:

- (1) The support equipment was authorized by Declaration of Confirmation.
- (2) For detachable type I/O cable should be specified the length in cm in 『Length』 column.

3. SUMMARY OF TEST RESULTS

Test procedures according to the technical standards:

FCC Part15 , Subpart B			
Standard Section	Test Item	Judgment	Remark
15.107	CONDUCTED EMISSION	PASS	
15.109	RADIATED EMISSION	PASS	

NOTE:

(1) "N/A" denotes test is not applicable in this test report.

4. MEASUREMENT INSTRUMENTS

Kind of Equipment	Manufacturer	Type No.	Serial No.	Last Calibrated	Calibrated until
ESCI Test Receiver	R&S	ESCI	100005	08/19/2016	08/18/2017
LISN	AFJ	LS16	16010222119	08/19/2016	08/18/2017
LISN(EUT)	Mestec	AN3016	04/10040	08/19/2016	08/18/2017
pre-amplifier	CDSI	PAP-1G18-38	--	08/19/2016	08/18/2017
System Controller	CT	SC100	-	08/19/2016	08/18/2017
Bi-log Antenna	Chase	CBL6111C	2576	08/19/2016	08/18/2017
Spectrum analyzer	R&S	FSU26	200409	08/19/2016	08/18/2017
Horn Antenna	SCHWARZBECK	9120D	1141	08/19/2016	08/18/2017
Bi-log Antenna	SCHWARZBECK	VULB9163	9163/340	08/19/2016	08/18/2017
Pre Amplifier	H.P.	HP8447E	2945A02715	10/13/2016	10/12/2017
9*6*6 Anechoic	--	--	--	08/21/2016	08/20/2017

5. EMC EMISSION TEST

5.1 CONDUCTED EMISSION MEASUREMENT

5.1.1 POWER LINE CONDUCTED EMISSION Limits (Frequency Range 150KHz-30MHz)

FREQUENCY (MHz)	Class A (dBuV)		Class B (dBuV)		Standard
	Quasi-peak	Average	Quasi-peak	Average	
0.15 -0.5	79.00	66.00	66 - 56 *	56 - 46 *	FCC
0.50 -5.0	73.00	60.00	56.00	46.00	FCC
5.0 -30.0	73.00	60.00	60.00	50.00	FCC

Note:

- (1) The tighter limit applies at the band edges.
- (2) The limit of " * " marked band means the limitation decreases linearly with the logarithm of the frequency in the range.

The following table is the setting of the receiver

Receiver Parameters	Setting
Attenuation	10 dB
Start Frequency	0.15 MHz
Stop Frequency	30 MHz
IF Bandwidth	9 kHz

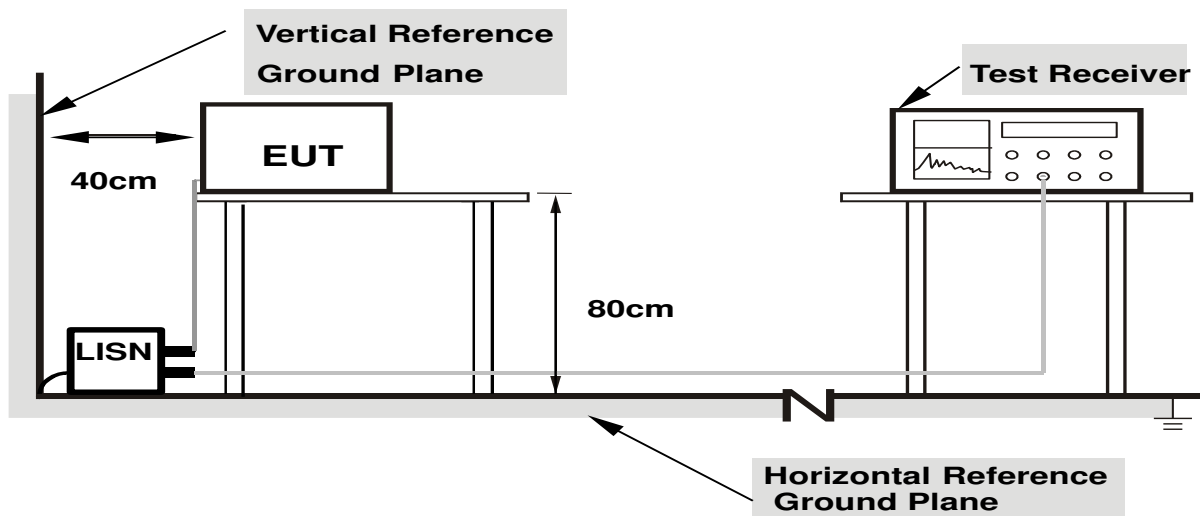
5.1.2 TEST PROCEDURE

- The EUT was placed 0.4 meters from the horizontal ground plane with EUT being connected to the power mains through a line impedance stabilization network (LISN). All other support equipments powered from additional LISN(s). The LISN provide 50 Ohm/ 50uH of coupling impedance for the measuring instrument.
- Interconnecting cables that hang closer than 40 cm to the ground plane shall be folded back and forth in the center forming a bundle 30 to 40 cm long.
- I/O cables that are not connected to a peripheral shall be bundled in the center. The end of the cable may be terminated, if required, using the correct terminating impedance. The overall length shall not exceed 1 m.
- LISN at least 80 cm from nearest part of EUT chassis.
- For the actual test configuration, please refer to the related Item –EUT Test Photos.

5.1.3 DEVIATION FROM TEST STANDARD

No deviation

5.1.4 TEST SETUP



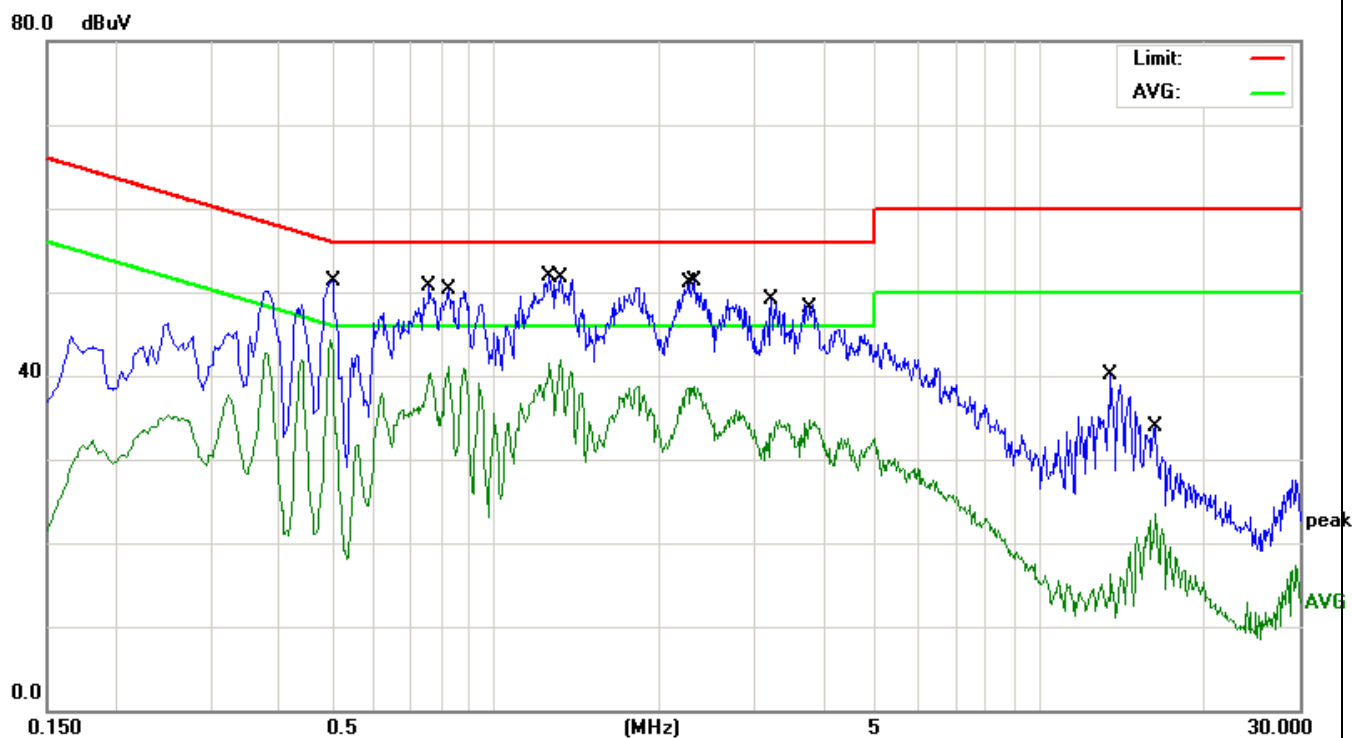
- Note: 1. Support units were connected to second LISN.**
2. Both of LISNs (AMN) are 80 cm from EUT and at least 80 cm from other units and other metal planes

5.1.5 EUT OPERATING CONDITIONS

The EUT was configured for testing in a typical fashion (as a customer would normally use it). The EUT has been programmed to continuously transmit during test. This operating condition was tested and used to collect the included data.

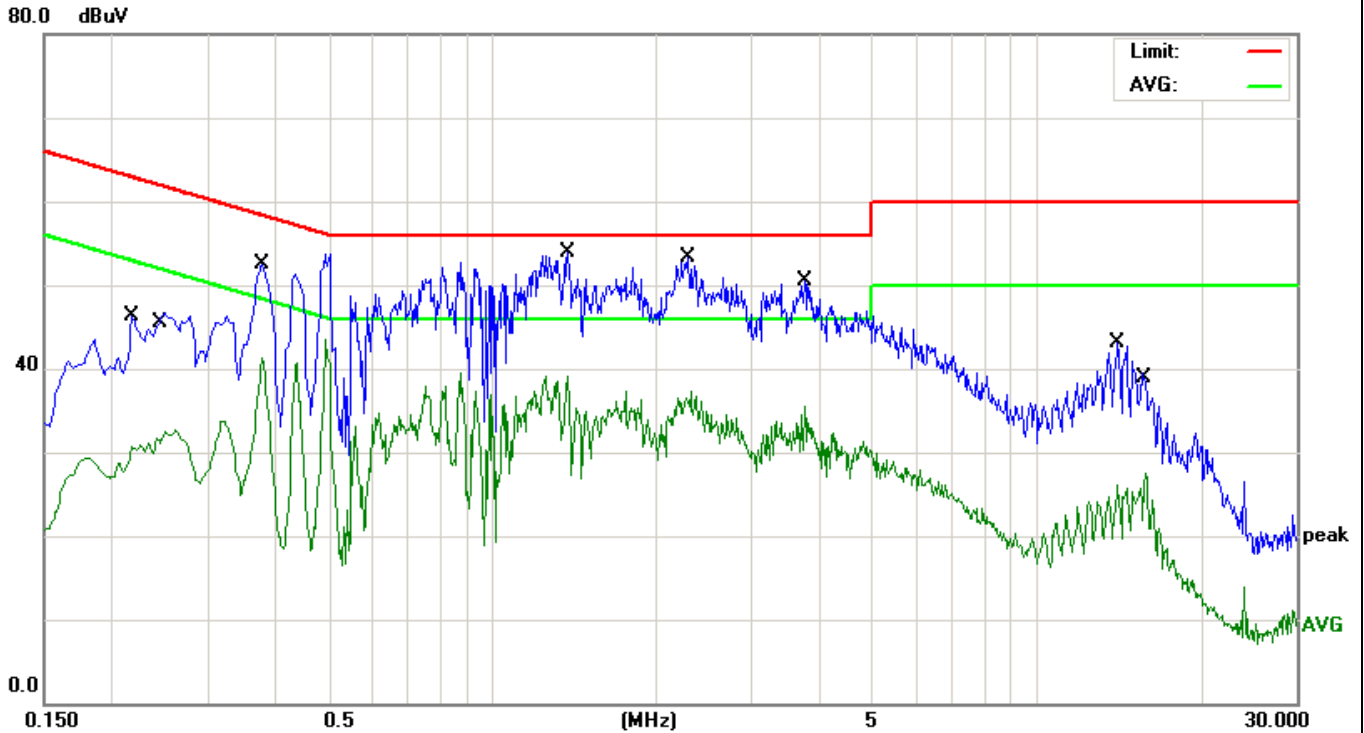
5.1.6 TEST RESULTS

EUT	Mobile phone	Model Name	W4
Temperature	26 °C	Relative Humidity	54%
Pressure	1010hPa	Phase	L
Test Date	August 15, 2016	Test Mode	Mode 1



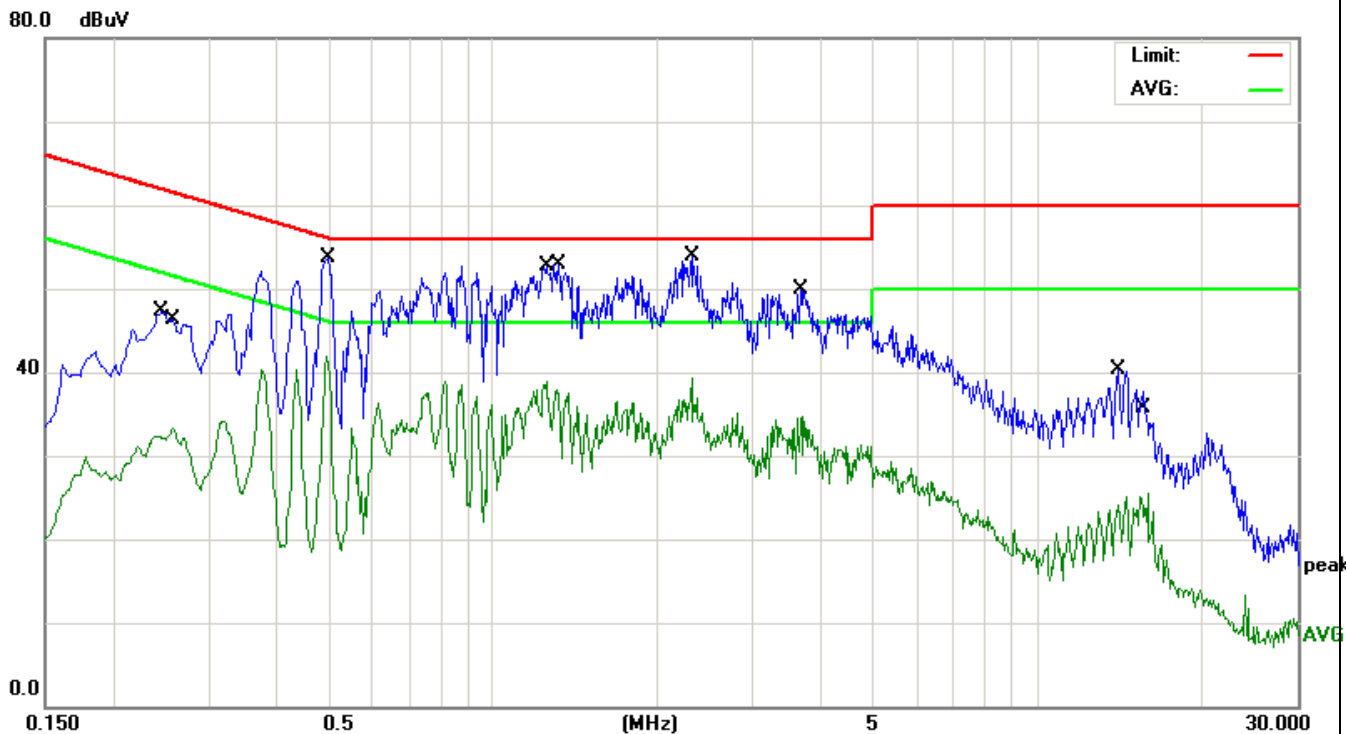
No.	Mk.	Freq. MHz	Reading Level dBuV	Correct Factor dB	Measure- ment dBuV	Limit dBuV	Over dB	Detector
1		0.4979	27.14	10.40	37.54	46.03	-8.49	AVG
2		0.5020	34.92	10.40	45.32	56.00	-10.68	QP
3		0.7580	33.10	10.37	43.47	56.00	-12.53	QP
4		0.8220	30.68	10.36	41.04	46.00	-4.96	AVG
5		1.2620	37.29	10.33	47.62	56.00	-8.38	QP
6	*	1.3180	31.62	10.32	41.94	46.00	-4.06	AVG
7		2.2620	34.93	10.28	45.21	56.00	-10.79	QP
8		2.3300	28.34	10.28	38.62	46.00	-7.38	AVG
9		3.2139	24.84	10.27	35.11	56.00	-20.89	QP
10		3.7660	24.54	10.25	34.79	46.00	-11.21	AVG
11		13.5099	27.15	10.16	37.31	60.00	-22.69	QP
12		16.3939	13.27	10.14	23.41	50.00	-26.59	AVG

EUT	Mobile phone	Model Name	W4
Temperature	26 °C	Relative Humidity	54%
Pressure	1010hPa	Phase	N
Test Date	August 15, 2016	Test Mode	Mode 1



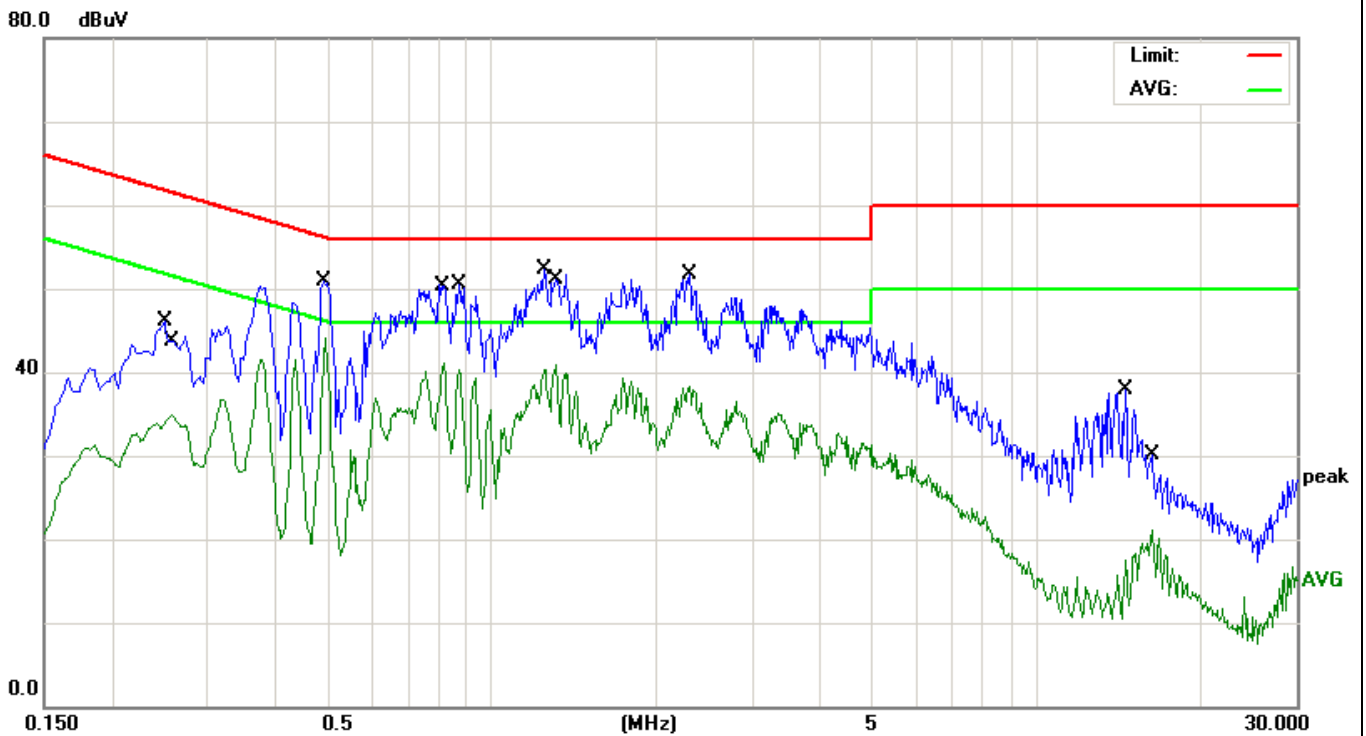
No.	Mk.	Freq. MHz	Reading Level dBuV	Correct Factor dB	Measure- ment dBuV	Limit dBuV	Over dB	Detector
1		0.2180	29.69	10.43	40.12	62.89	-22.77	QP
2		0.2420	21.27	10.43	31.70	52.02	-20.32	AVG
3		0.3780	36.91	10.41	47.32	58.32	-11.00	QP
4		0.3780	30.86	10.41	41.27	48.32	-7.05	AVG
5		1.3779	35.61	10.32	45.93	56.00	-10.07	QP
6	*	1.3779	28.83	10.32	39.15	46.00	-6.85	AVG
7		2.2860	34.83	10.28	45.11	56.00	-10.89	QP
8		2.3140	26.97	10.28	37.25	46.00	-8.75	AVG
9		3.7500	35.01	10.25	45.26	56.00	-10.74	QP
10		3.7500	25.34	10.25	35.59	46.00	-10.41	AVG
11		14.0940	34.53	10.16	44.69	60.00	-15.31	QP
12		15.8580	17.29	10.14	27.43	50.00	-22.57	AVG

EUT	Mobile phone	Model Name	W4
Temperature	26 °C	Relative Humidity	54%
Pressure	1010hPa	Phase	L
Test Date	August 15, 2016	Test Mode	Mode 2



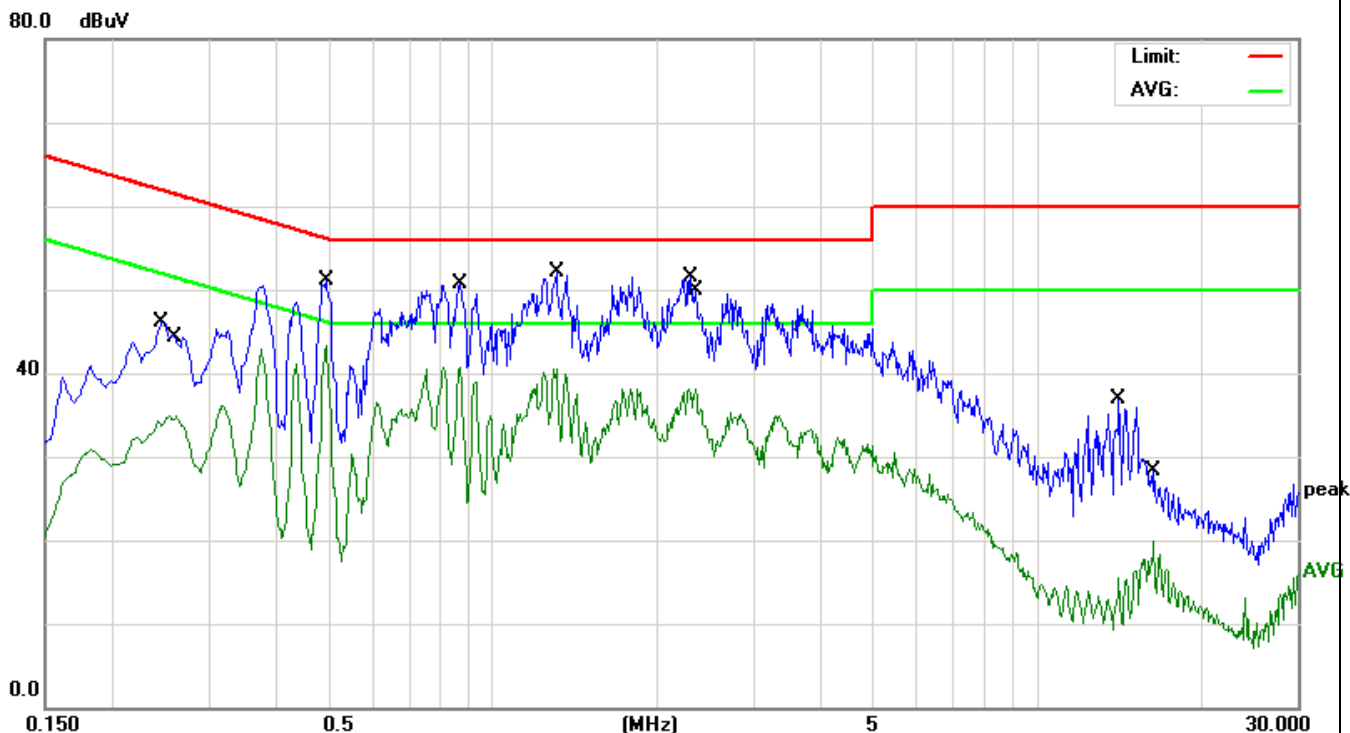
No.	Mk.	Freq. MHz	Reading Level dBuV	Correct Factor dB	Measure- ment dBuV	Limit dBuV	Over dB	Detector
1		0.2460	29.76	10.43	40.19	61.89	-21.70	QP
2		0.2580	22.87	10.43	33.30	51.49	-18.19	AVG
3	*	0.4940	31.43	10.40	41.83	46.10	-4.27	AVG
4		0.4980	37.56	10.40	47.96	56.03	-8.07	QP
5		1.2500	28.59	10.33	38.92	46.00	-7.08	AVG
6		1.3180	37.34	10.32	47.66	56.00	-8.34	QP
7		2.3100	35.84	10.28	46.12	56.00	-9.88	QP
8		2.3100	28.95	10.28	39.23	46.00	-6.77	AVG
9		3.6780	38.05	10.26	48.31	56.00	-7.69	QP
10		3.6860	24.53	10.26	34.79	46.00	-11.21	AVG
11		14.0900	25.25	10.16	35.41	60.00	-24.59	QP
12		15.9060	15.38	10.14	25.52	50.00	-24.48	AVG

EUT	Mobile phone	Model Name	W4
Temperature	26 °C	Relative Humidity	54%
Pressure	1010hPa	Phase	N
Test Date	August 15, 2016	Test Mode	Mode 2



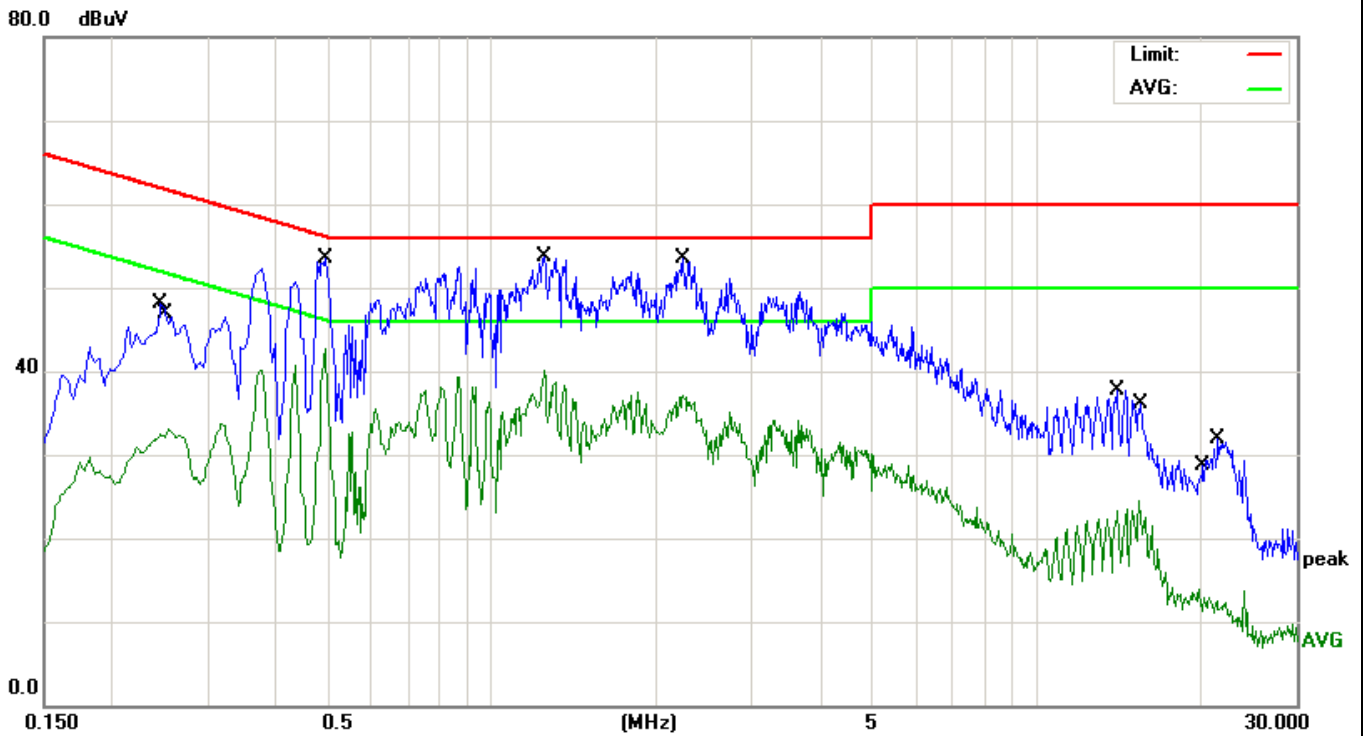
No.	Mk.	Freq. MHz	Reading Level dBuV	Correct Factor dB	Measure- ment dBuV	Limit dBuV	Over dB	Detector
1		0.2500	29.68	10.43	40.11	61.75	-21.64	QP
2		0.2580	24.44	10.43	34.87	51.49	-16.62	AVG
3		0.4900	31.92	10.40	42.32	56.17	-13.85	QP
4		0.4940	29.61	10.40	40.01	46.10	-6.09	AVG
5	*	0.8139	30.79	10.36	41.15	46.00	-4.85	AVG
6		0.8700	33.31	10.36	43.67	56.00	-12.33	QP
7		1.2460	35.79	10.33	46.12	56.00	-9.88	QP
8		1.3099	30.53	10.32	40.85	46.00	-5.15	AVG
9		2.3020	37.27	10.28	47.55	56.00	-8.45	QP
10		2.3020	27.98	10.28	38.26	46.00	-7.74	AVG
11		14.5820	20.72	10.15	30.87	60.00	-29.13	QP
12		16.2860	10.94	10.14	21.08	50.00	-28.92	AVG

EUT	Mobile phone	Model Name	W4
Temperature	26 °C	Relative Humidity	54%
Pressure	1010hPa	Phase	L
Test Date	August 15, 2016	Test Mode	Mode 3



No.	Mk.	Freq. MHz	Reading Level dBuV	Correct Factor dB	Measure- ment dBuV	Limit dBuV	Over dB	Detector
1		0.2460	29.90	10.43	40.33	61.89	-21.56	QP
2		0.2620	24.39	10.43	34.82	51.36	-16.54	AVG
3		0.4940	36.92	10.40	47.32	56.10	-8.78	QP
4	*	0.4940	32.95	10.40	43.35	46.10	-2.75	AVG
5		0.8700	33.63	10.36	43.99	56.00	-12.01	QP
6		0.8700	30.34	10.36	40.70	46.00	-5.30	AVG
7		1.3060	35.05	10.32	45.37	56.00	-10.63	QP
8		1.3060	30.11	10.32	40.43	46.00	-5.57	AVG
9		2.2980	32.68	10.28	42.96	56.00	-13.04	QP
10		2.3540	27.80	10.28	38.08	46.00	-7.92	AVG
11		14.0780	20.89	10.16	31.05	60.00	-28.95	QP
12		16.3300	9.72	10.14	19.86	50.00	-30.14	AVG

EUT	Mobile phone	Model Name	W4
Temperature	26 °C	Relative Humidity	54%
Pressure	1010hPa	Phase	N
Test Date	August 15, 2016	Test Mode	Mode 3



No.	Mk.	Freq. MHz	Reading Level dBuV	Correct Factor dB	Measure- ment dBuV	Limit dBuV	Over dB	Detector
1		0.2460	32.22	10.43	42.65	61.89	-19.24	QP
2		0.2540	22.60	10.43	33.03	51.62	-18.59	AVG
3		0.4940	37.97	10.40	48.37	56.10	-7.73	QP
4	*	0.4940	32.32	10.40	42.72	46.10	-3.38	AVG
5		1.2460	37.30	10.33	47.63	56.00	-8.37	QP
6		1.2460	29.78	10.33	40.11	46.00	-5.89	AVG
7		2.2380	36.83	10.29	47.12	56.00	-8.88	QP
8		2.2380	26.87	10.29	37.16	46.00	-8.84	AVG
9		14.0420	22.25	10.16	32.41	60.00	-27.59	QP
10		15.4420	14.30	10.15	24.45	50.00	-25.55	AVG
11		19.9260	3.79	10.12	13.91	50.00	-36.09	AVG
12		21.4860	18.20	10.11	28.31	60.00	-31.69	QP

5.2 RADIATED EMISSION MEASUREMENT

5.2.1 RADIATED EMISSION LIMITS (Frequency Range 9kHz-1000MHz)

20dBc in any 100 kHz bandwidth outside the operating frequency band. In case the emission fall within the restricted band specified on 15.205(a), then the 15.209(a) limit in the table below has to be followed.

Frequencies (MHz)	Field Strength (micorvolts/meter)	Measurement Distance (meters)
0.009~0.490	2400/F(KHz)	300
0.490~1.705	24000/F(KHz)	30
1.705~30.0	30	30
30~88	100	3
88~216	150	3
216~960	200	3
Above 960	500	3

LIMITS OF RADIATED EMISSION MEASUREMENT (Above 1000MHz)

FREQUENCY (MHz)	Limit (dBuV/m) (at 3M)	
	PEAK	AVERAGE
Above 1000	74	54

Notes:

- (1) The limit for radiated test was performed according to FCC PART 15C.
- (2) The tighter limit applies at the band edges.
- (3) Emission level (dBuV/m)=20log Emission level (uV/m).

Spectrum Parameter	Setting
Attenuation	Auto
Start Frequency	1000 MHz
Stop Frequency	10th carrier harmonic
RB / VB (emission in restricted band)	1 MHz / 1 MHz for Peak, 1 MHz / 1Hz for Average

Receiver Parameter	Setting
Attenuation	Auto
Start ~ Stop Frequency	9kHz~150kHz / RB 200Hz for QP
Start ~ Stop Frequency	150kHz~30MHz / RB 9kHz for QP
Start ~ Stop Frequency	30MHz~1000MHz / RB 120kHz for QP

5.2.2 TEST PROCEDURE

- a. The measuring distance of at 3 m shall be used for measurements at frequency up to 1GHz. For frequencies above 1GHz, any suitable measuring distance may be used.
- b. The EUT was placed on the top of a rotating table 0.8 meters above the ground at a 3 meter open area test site. The table was rotated 360 degrees to determine the position of the highest radiation.
- c. The height of the equipment or of the substitution antenna shall be 0.8 m; the height of the test antenna shall vary between 1 m to 4 m. Both horizontal and vertical polarizations of the antenna are set to make the measurement.
- d. The initial step in collecting conducted emission data is a spectrum analyzer peak detector mode pre-scanning the measurement frequency range. Significant peaks are then marked and then Quasi Peak detector mode re-measured.
- e. If the Peak Mode measured value compliance with and lower than Quasi Peak Mode Limit, the EUT shall be deemed to meet QP Limits and then no additional QP Mode measurement performed.
- f. For the actual test configuration, please refer to the related Item –EUT Test Photos.

Note:

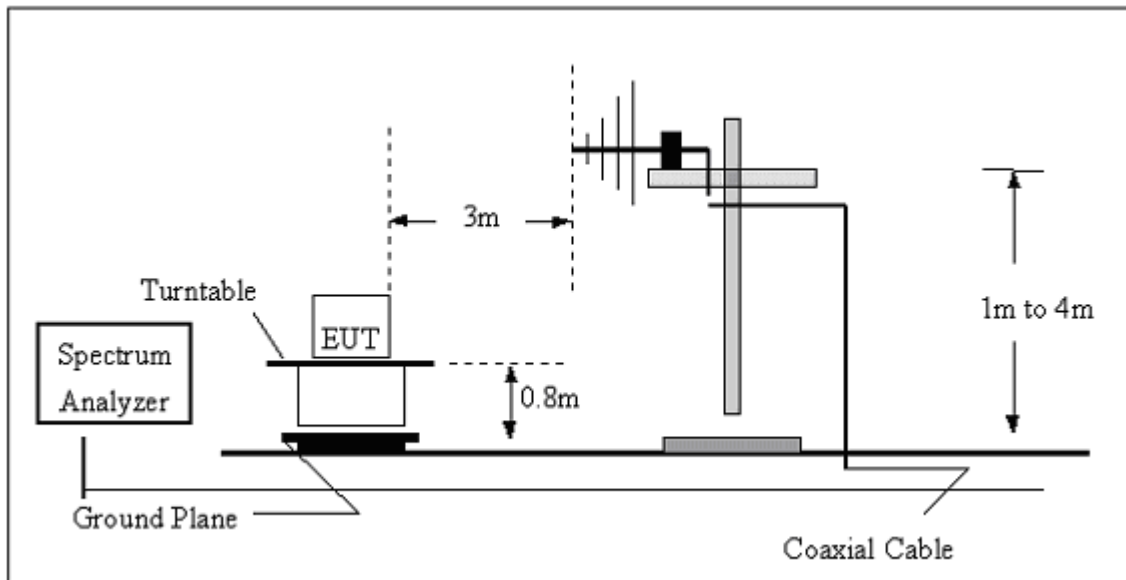
Both horizontal and vertical antenna polarities were tested and performed pretest to three orthogonal axis. The worst case emissions were reported

5.2.3 DEVIATION FROM TEST STANDARD

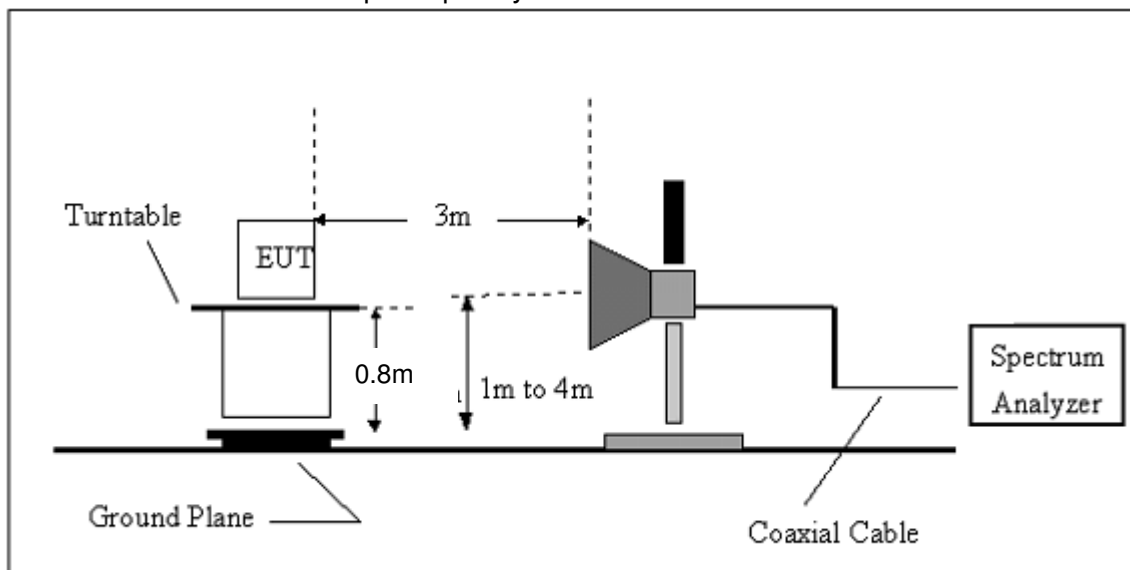
No deviation

5.2.4 TEST SETUP

(A) Radiated Emission Test-Up Frequency 30MHz~1GHz



(B) Radiated Emission Test-Up Frequency Above 1GHz

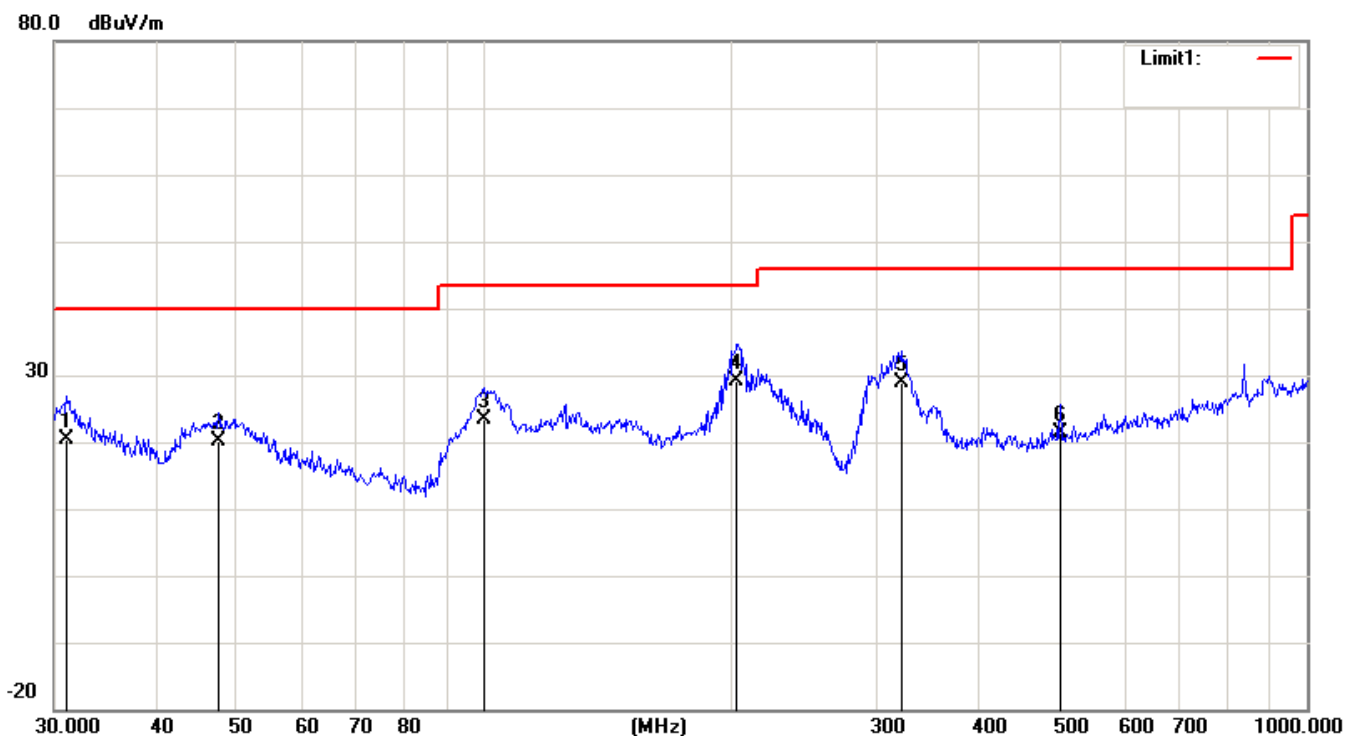


5.2.5 EUT OPERATING CONDITIONS

The EUT tested system was configured as the statements of 2.4 Unless otherwise a special operating condition is specified in the follows during the testing.

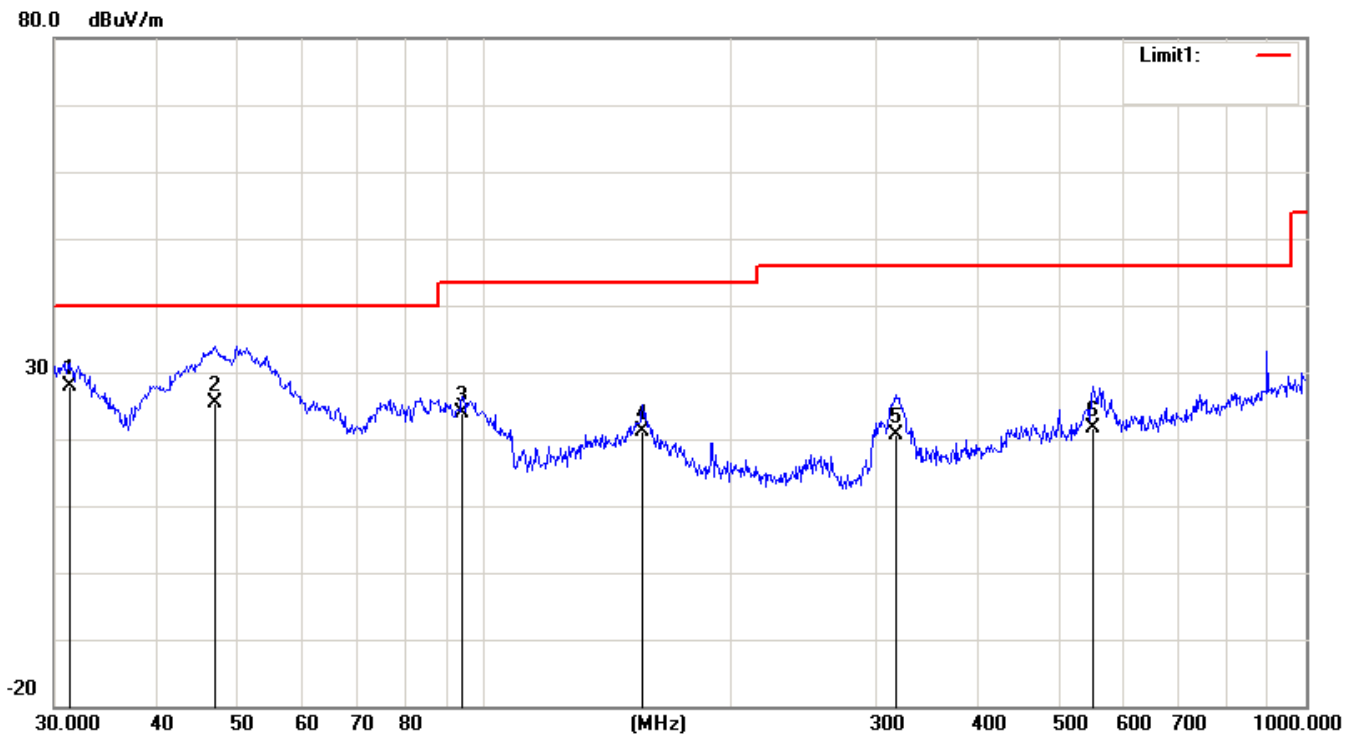
5.2.5.1 TEST RESULTS (BETWEEN 30M – 1000 MHZ)

EUT	Mobile phone	Model Name	W4
Temperature	20 °C	Relative Humidity	48%
Pressure	1010 hPa	Polarization :	Horizontal
Test Mode	Mode 1	Test Date	August 15, 2016



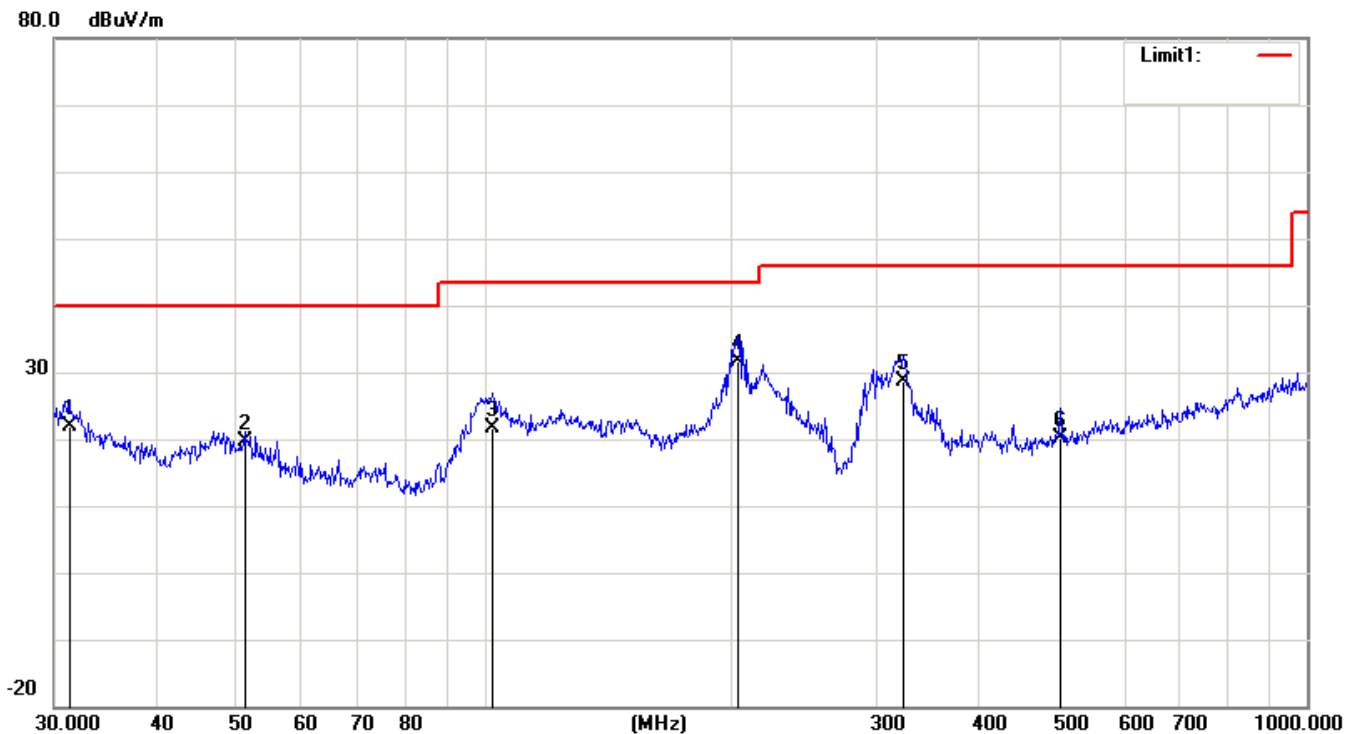
No.	Mk.	Freq. MHz	Reading Level dBuV	Correct Factor dB	Measure- ment dBuV/m	Limit dBuV/m	Over dB	Detector
1		31.0706	17.59	2.77	20.36	40.00	-19.64	QP
2		47.4918	28.15	-7.98	20.17	40.00	-19.83	QP
3		99.8777	29.77	-6.32	23.45	43.50	-20.05	QP
4	*	202.8104	34.04	-4.92	29.12	43.50	-14.38	QP
5		321.0608	33.49	-4.53	28.96	46.00	-17.04	QP
6		501.1790	22.40	-1.00	21.40	46.00	-24.60	QP

EUT	Mobile phone	Model Name	W4
Temperature	20 °C	Relative Humidity	48%
Pressure	1010 hPa	Polarization :	Vertical
Test Mode	Mode 1	Test Date	August 15, 2016



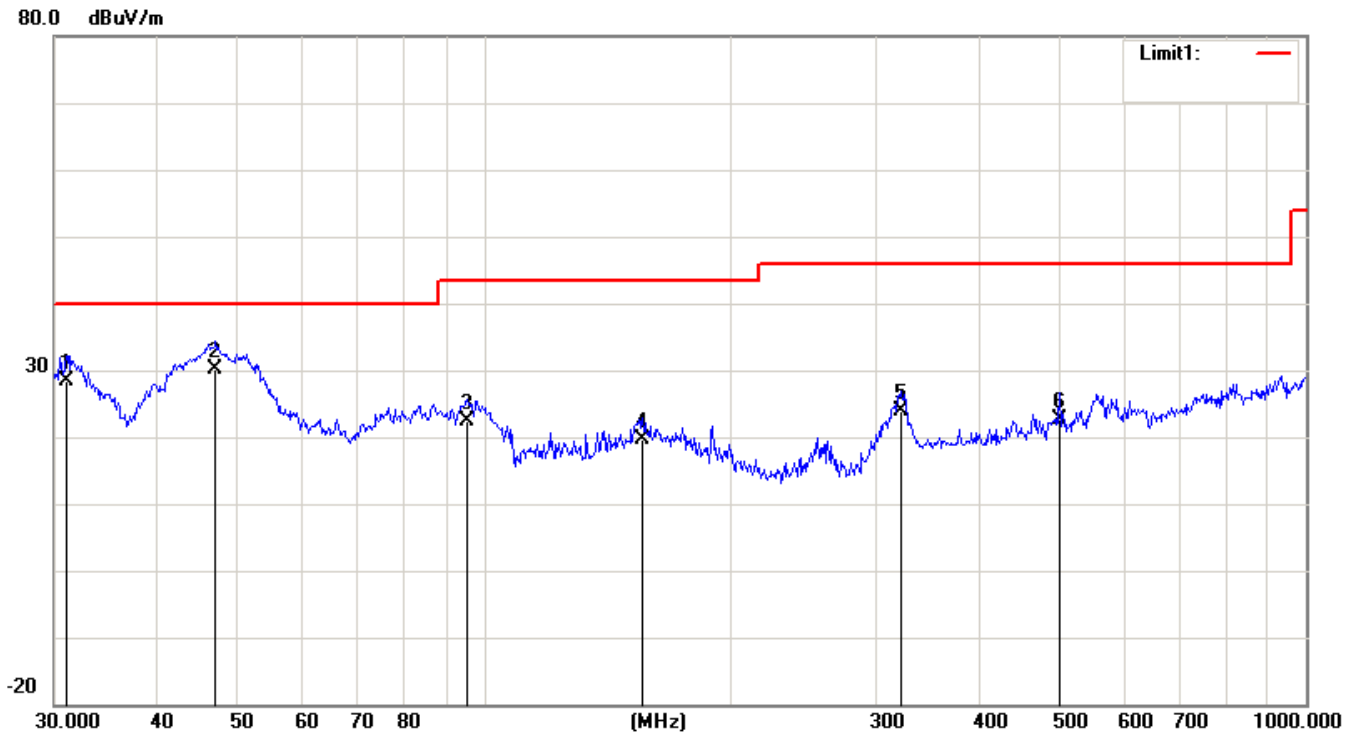
No.	Mk.	Freq. MHz	Reading Level dBuV	Correct Factor dB	Measure- ment dBuV/m	Limit dBuV/m	Over dB	Detector
1	*	31.2893	25.36	2.62	27.98	40.00	-12.02	QP
2		46.9948	33.18	-7.77	25.41	40.00	-14.59	QP
3		94.0979	31.35	-7.47	23.88	43.50	-19.62	QP
4		155.9101	25.28	-4.24	21.04	43.50	-22.46	QP
5		316.5890	25.12	-4.44	20.68	46.00	-25.32	QP
6		550.9480	21.19	0.46	21.65	46.00	-24.35	QP

EUT	Mobile phone	Model Name	W4
Temperature	20 °C	Relative Humidity	48%
Pressure	1010 hPa	Polarization :	Horizontal
Test Mode	Mode 2	Test Date	August 15, 2016



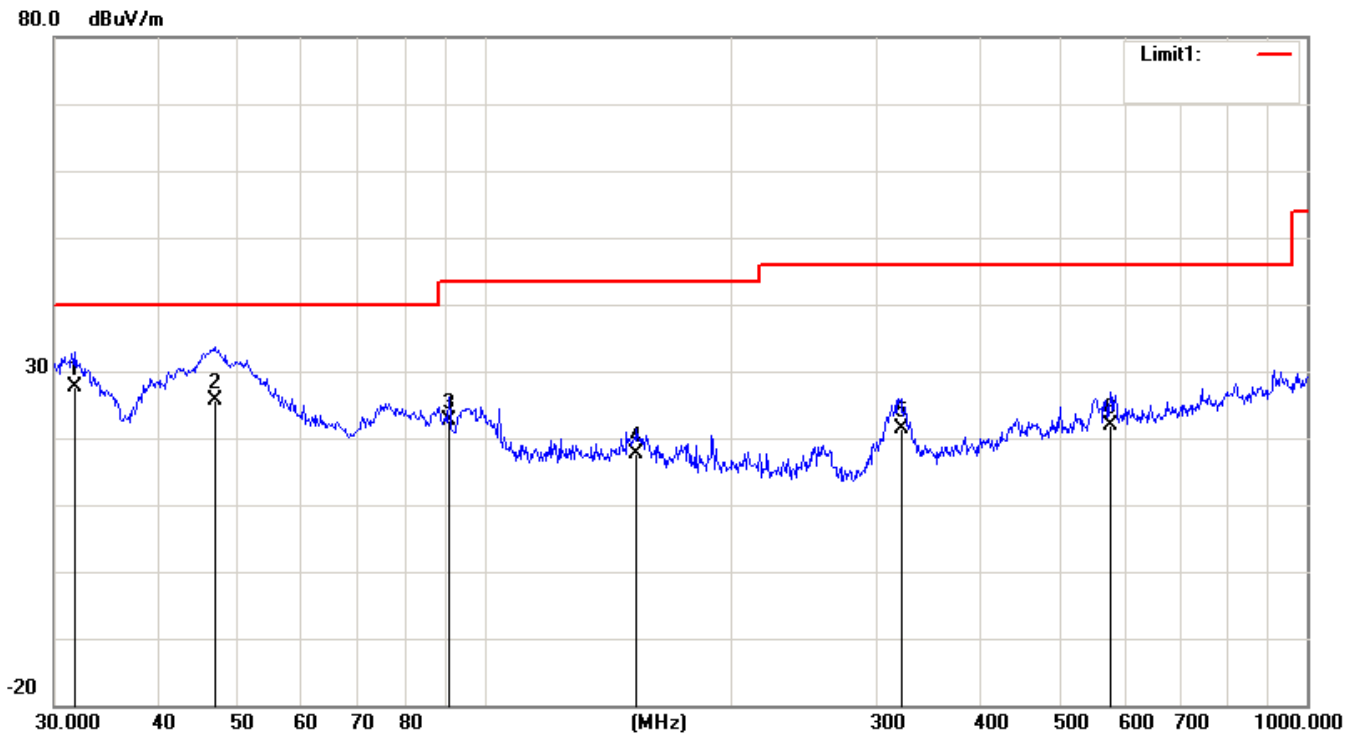
No.	Mk.	Freq. MHz	Reading Level dBuV	Correct Factor dB	Measure- ment dBuV/m	Limit dBuV/m	Over dB	Detector
1		31.2893	19.25	2.62	21.87	40.00	-18.13	QP
2		51.1209	28.77	-9.12	19.65	40.00	-20.35	QP
3		102.3597	27.32	-5.66	21.66	43.50	-21.84	QP
4	*	203.5228	36.47	-4.95	31.52	43.50	-11.98	QP
5		323.3204	33.21	-4.59	28.62	46.00	-17.38	QP
6		501.1790	21.08	-1.00	20.08	46.00	-25.92	QP

EUT	Mobile phone	Model Name	W4
Temperature	20 °C	Relative Humidity	48%
Pressure	1010 hPa	Polarization :	Vertical
Test Mode	Mode 2	Test Date	August 15, 2016



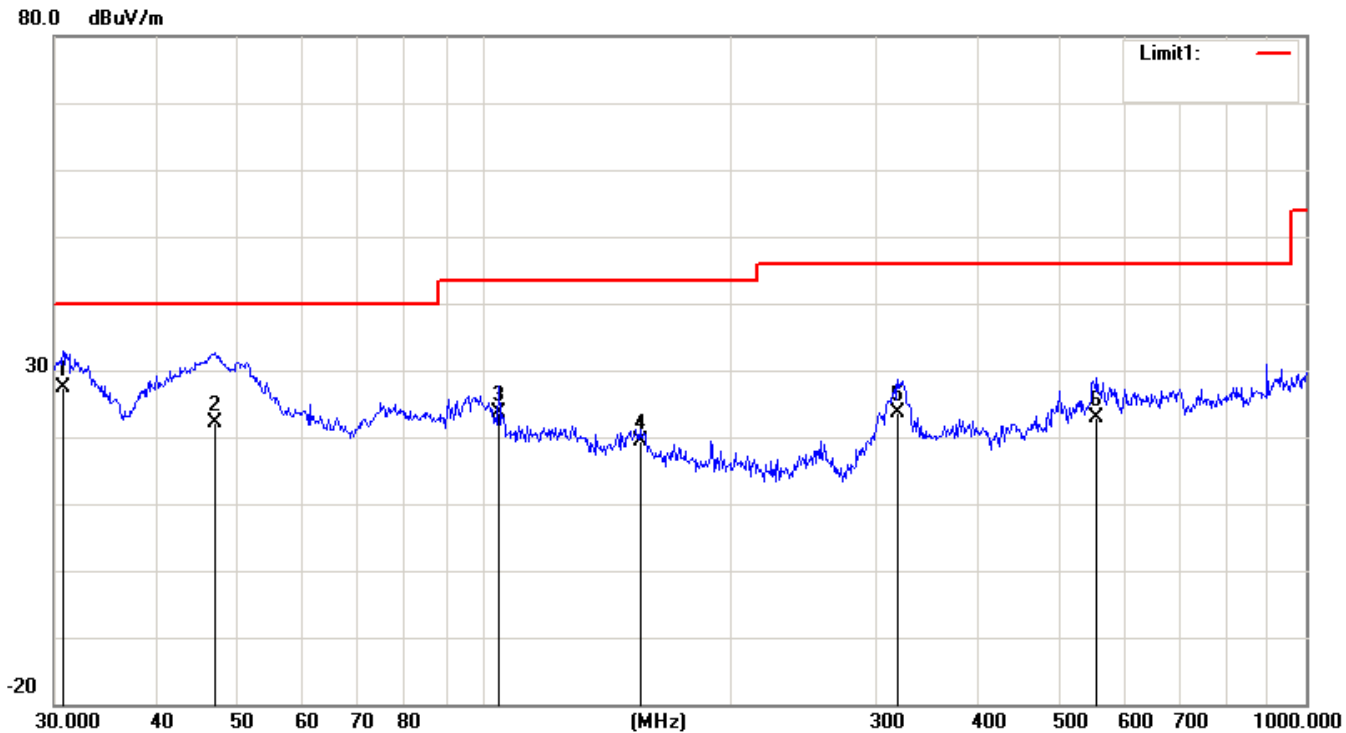
No.	Mk.	Freq. MHz	Reading Level dBuV	Correct Factor dB	Measure- ment dBuV/m	Limit dBuV/m	Over dB	Detector
1		31.0706	25.55	2.77	28.32	40.00	-11.68	QP
2	*	47.1599	37.85	-7.84	30.01	40.00	-9.99	QP
3		95.4270	29.56	-7.26	22.30	43.50	-21.20	QP
4		155.9101	23.88	-4.24	19.64	43.50	-23.86	QP
5		322.1886	28.44	-4.56	23.88	46.00	-22.12	QP
6		501.1790	23.54	-1.00	22.54	46.00	-23.46	QP

EUT	Mobile phone	Model Name	W4
Temperature	20 °C	Relative Humidity	48%
Pressure	1010 hPa	Polarization :	Horizontal
Test Mode	Mode 3	Test Date	August 15, 2016



No.	Mk.	Freq. MHz	Reading Level dBuV	Correct Factor dB	Measure- ment dBuV/m	Limit dBuV/m	Over dB	Detector
1	*	31.8427	25.41	2.25	27.66	40.00	-12.34	QP
2		46.9948	33.41	-7.77	25.64	40.00	-14.36	QP
3		90.5374	30.46	-7.92	22.54	43.50	-20.96	QP
4		153.2004	21.71	-4.08	17.63	43.50	-25.87	QP
5		321.0608	25.89	-4.53	21.36	46.00	-24.64	QP
6		576.6443	21.14	0.64	21.78	46.00	-24.22	QP

EUT	Mobile phone	Model Name	W4
Temperature	20 °C	Relative Humidity	48%
Pressure	1010 hPa	Polarization :	Vertical
Test Mode	Mode 3	Test Date	August 15, 2016



No.	Mk.	Freq. MHz	Reading Level dBuV	Correct Factor dB	Measure- ment dBuV/m	Limit dBuV/m	Over dB	Detector
1	*	30.7455	24.33	2.99	27.32	40.00	-12.68	QP
2		47.1599	29.85	-7.84	22.01	40.00	-17.99	QP
3		104.1701	28.92	-5.18	23.74	43.50	-19.76	QP
4		154.8204	23.65	-4.20	19.45	43.50	-24.05	QP
5		318.8170	28.13	-4.48	23.65	46.00	-22.35	QP
6		556.7744	22.61	0.37	22.98	46.00	-23.02	QP

5.2.5.2 TEST RESULTS(1GHZ TO 6GHZ)

EUT	Mobile phone	Model Name	W4
Temperature	20 °C	Relative Humidity	48%
Pressure	1010 hPa	Test Mode	Mode 1
Test Date	August 15, 2016		

Freq. (MHz)	Ant. Pol.	Emission Level(dBuV)		Limit 3m(dBuV/m)		Over(dB)	
		PK	AV	PK	AV	PK	AV
1632.45	V	60.24	41.99	74	54	-13.76	-12.01
2829.27	V	58.45	39.73	74	54	-15.55	-14.27
1684.52	H	58.34	39.32	74	54	-15.66	-14.68
2831.6	H	58.40	39.40	74	54	-15.60	-14.60

Remark:

All emissions not reported were more than 20dB below the specified limit or in the noise floor.

Factor = Antenna Factor + Cable Loss – Pre-amplifier.

All the x/y/z orientation has been investigated, and only worst case is presented in this report.

EUT	Mobile phone	Model Name	W4
Temperature	20 °C	Relative Humidity	48%
Pressure	1010 hPa	Test Mode	Mode 2
Test Date	August 15, 2016		

Freq. (MHz)	Ant. Pol.	Emission Level(dBuV)		Limit 3m(dBuV/m)		Over(dB)	
		PK	AV	PK	AV	PK	AV
1583.35	V	58.39	39.16	74	54	-15.61	-14.84
2641.52	V	58.03	39.32	74	54	-15.97	-14.68
1628.42	H	59.93	40.44	74	54	-14.07	-13.56
2810.39	H	58.14	39.14	74	54	-15.86	-14.86

Remark:

All emissions not reported were more than 20dB below the specified limit or in the noise floor.

Factor = Antenna Factor + Cable Loss – Pre-amplifier.

All the x/y/z orientation has been investigated, and only worst case is presented in this report.

EUT	Mobile phone	Model Name	W4
Temperature	20 °C	Relative Humidity	48%
Pressure	1010 hPa	Test Mode	Mode 3
Test Date	August 15, 2016		

Freq. (MHz)	Ant. Pol.	Emission Level(dBuV)		Limit 3m(dBuV/m)		Over(dB)	
		PK	AV	PK	AV	PK	AV
1577.35	V	60.96	40.29	74	54	-13.04	-13.71
2652.38	V	58.29	39.16	74	54	-15.71	-14.84
1699.33	H	58.89	39.13	74	54	-15.11	-14.87
2739.42	H	58.94	39.94	74	54	-15.06	-14.06

Remark:

All emissions not reported were more than 20dB below the specified limit or in the noise floor.

Factor = Antenna Factor + Cable Loss – Pre-amplifier.

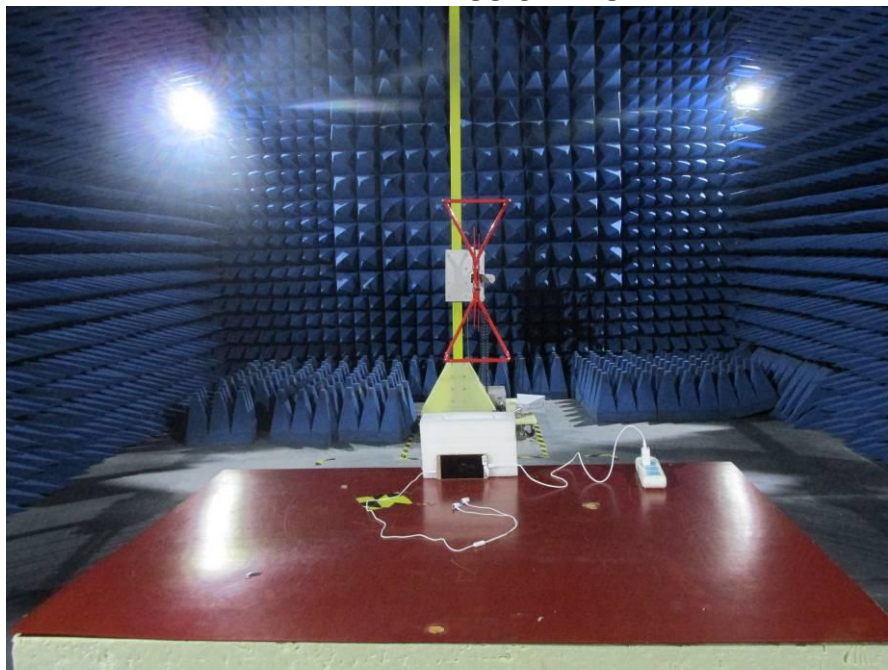
All the x/y/z orientation has been investigated, and only worst case is presented in this report.

6. EUT TEST PHOTO

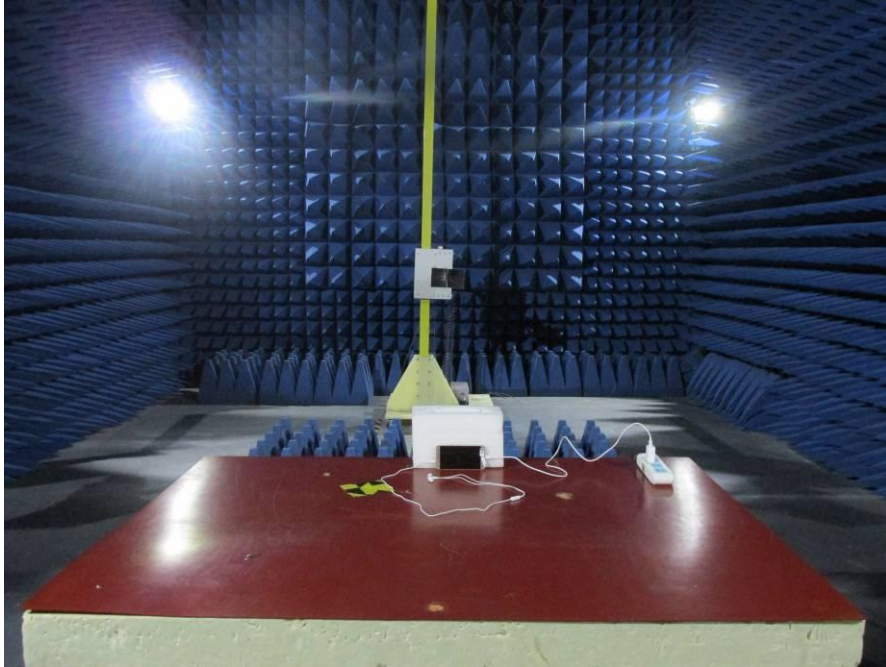
CONDUCTED EMISSION TEST



RADIATED EMISSION TEST



RADIATED EMISSION TEST



7. PHOTOGRAPHS OF EUT

Appearance photograph of EUT



Appearance photograph of EUT



Appearance photograph of EUT



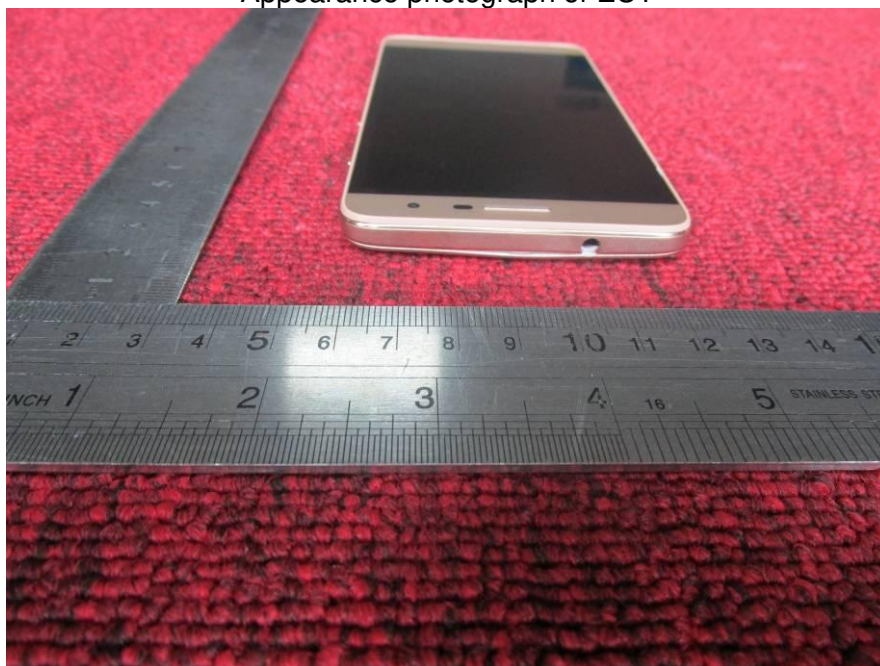
Appearance photograph of EUT



Appearance photograph of EUT



Appearance photograph of EUT



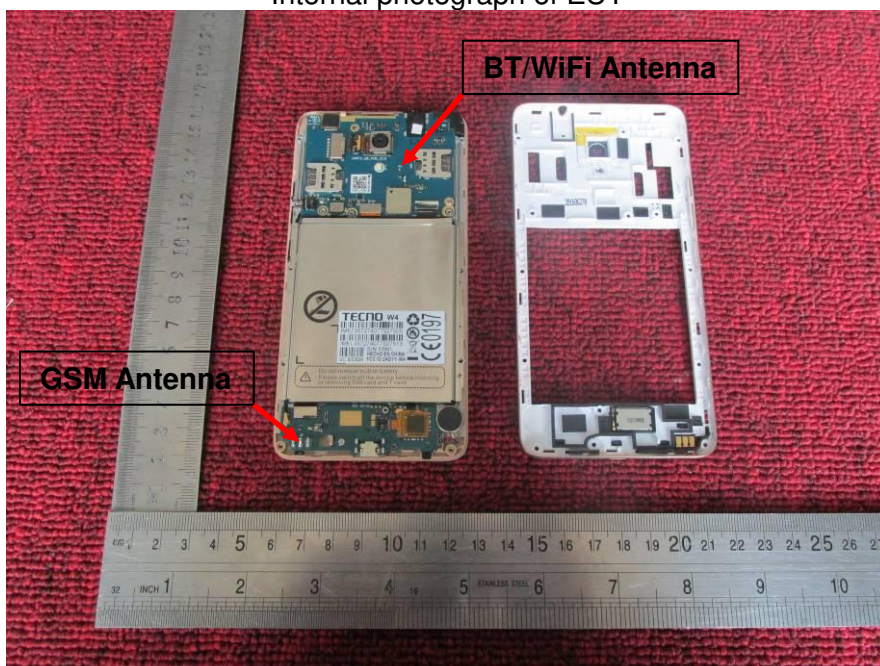
Appearance photograph of EUT



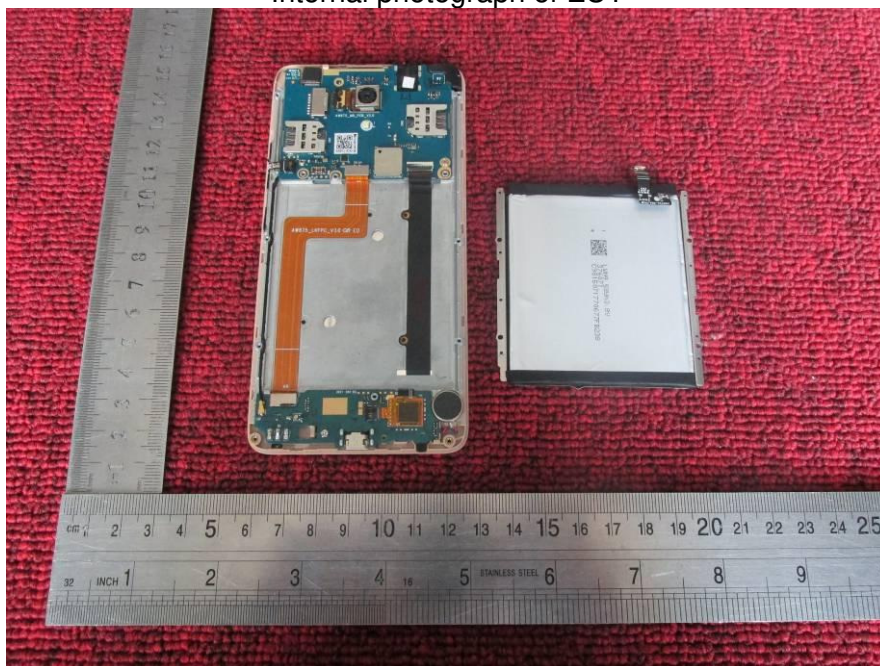
Appearance photograph of EUT



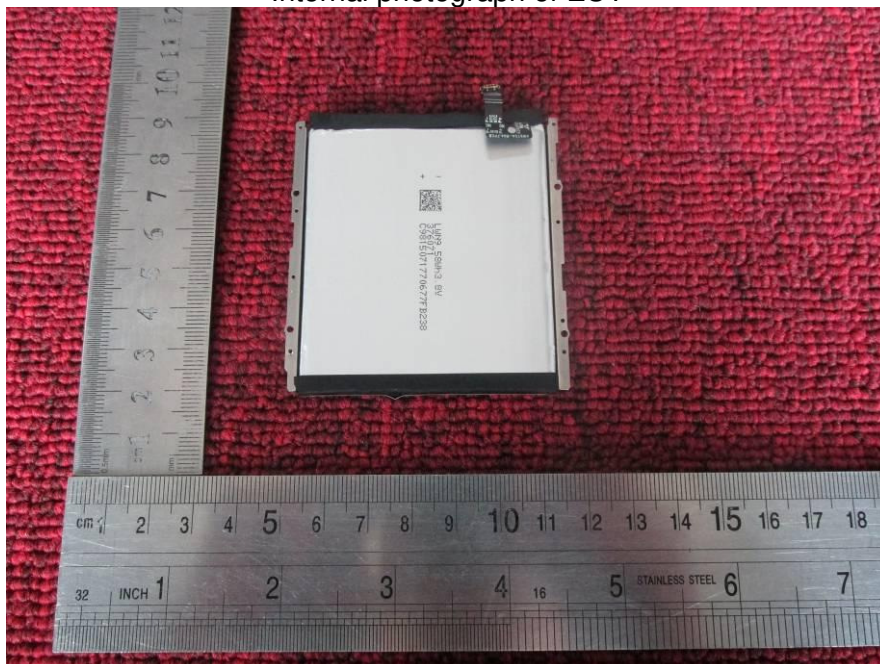
Internal photograph of EUT



Internal photograph of EUT



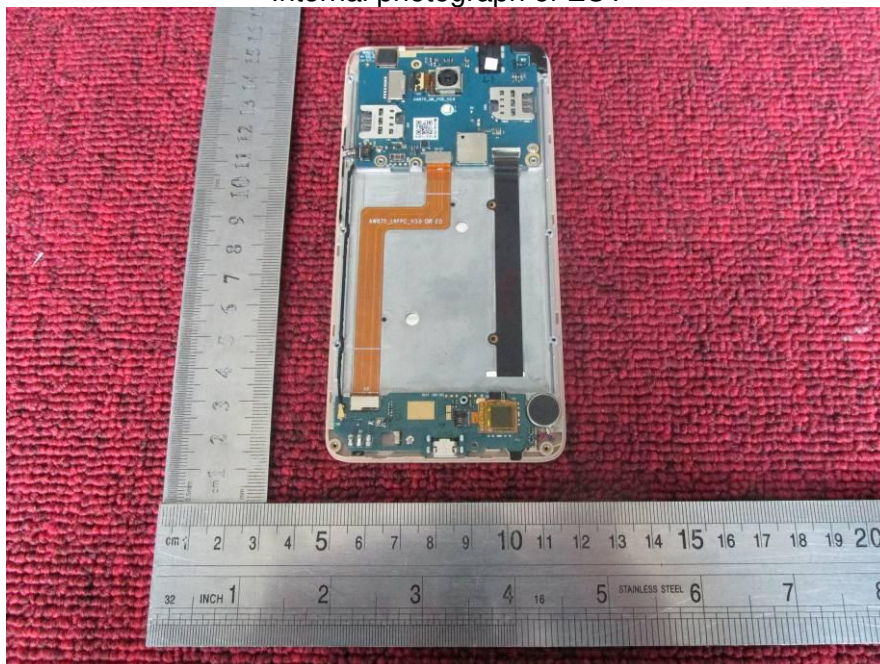
Internal photograph of EUT



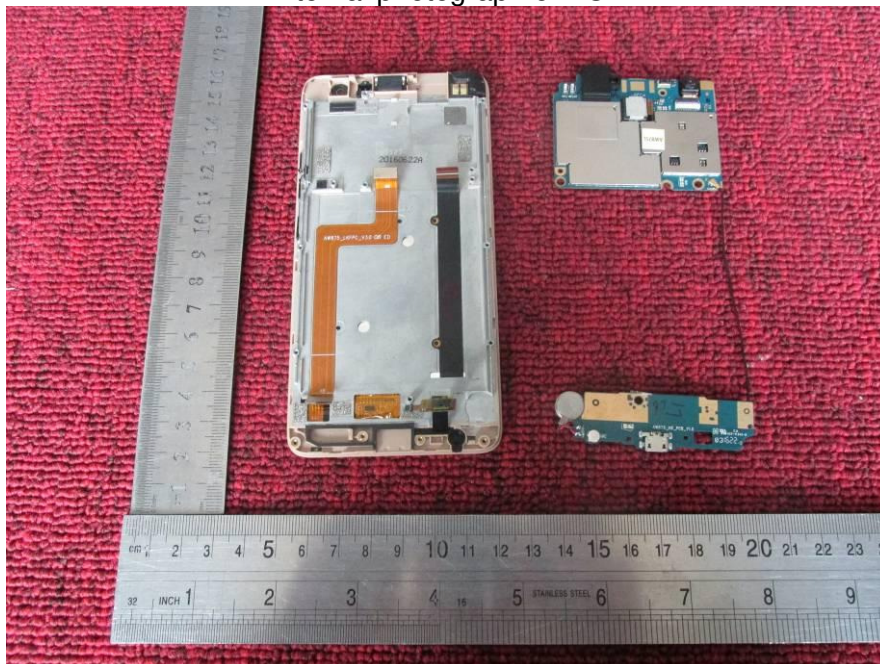
Internal photograph of EUT



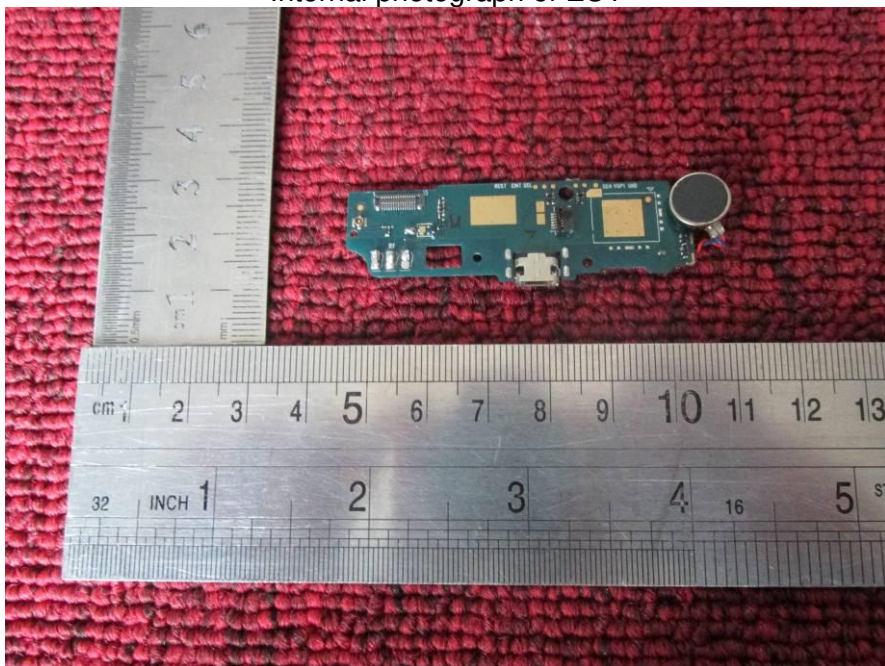
Internal photograph of EUT



Internal photograph of EUT



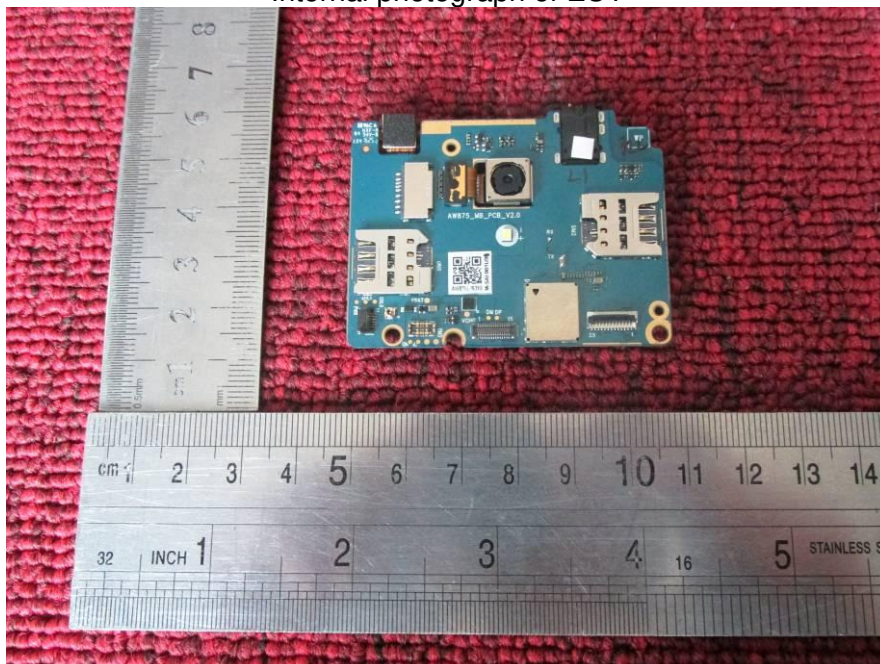
Internal photograph of EUT



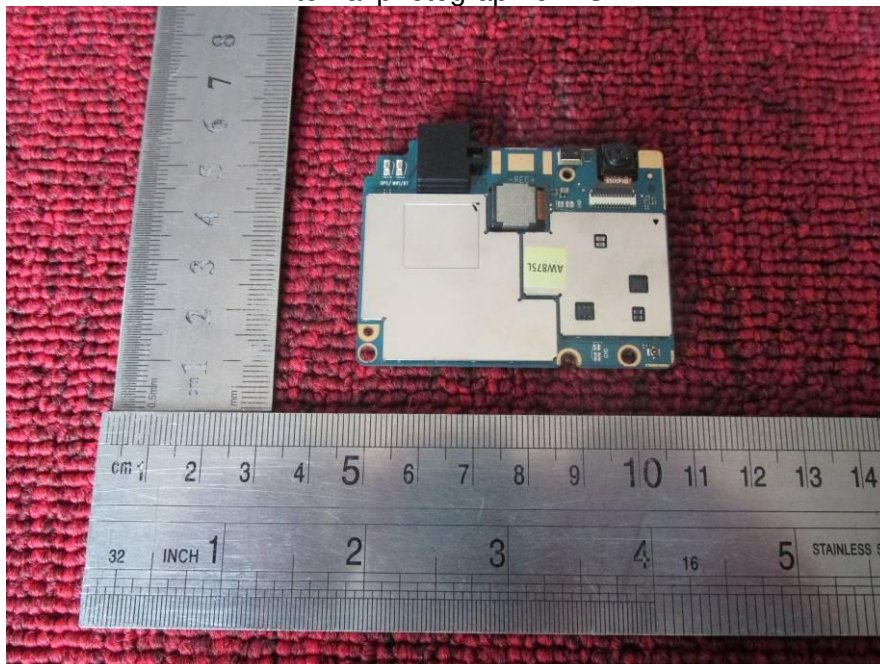
Internal photograph of EUT



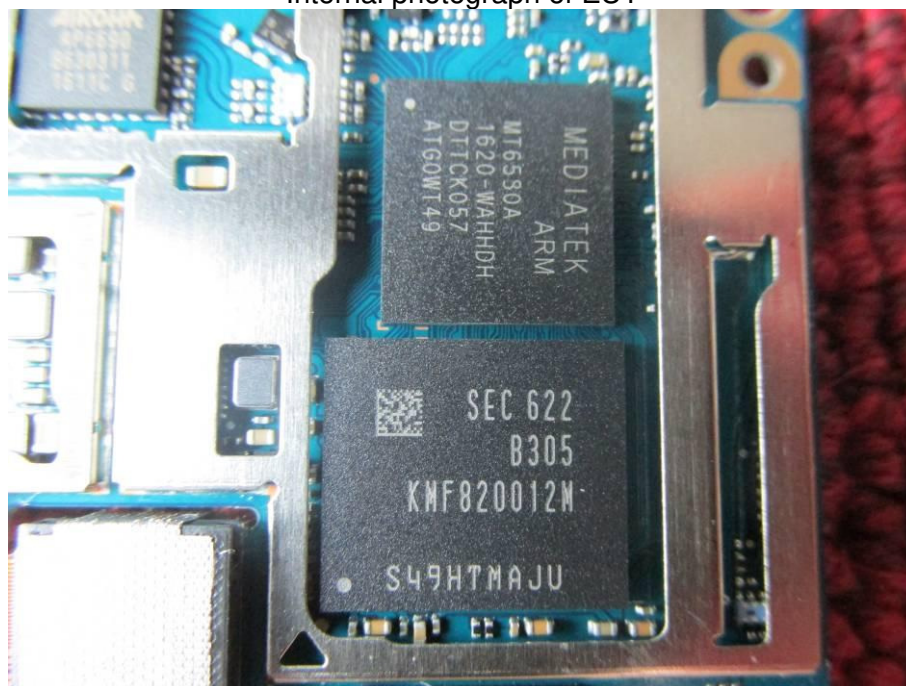
Internal photograph of EUT



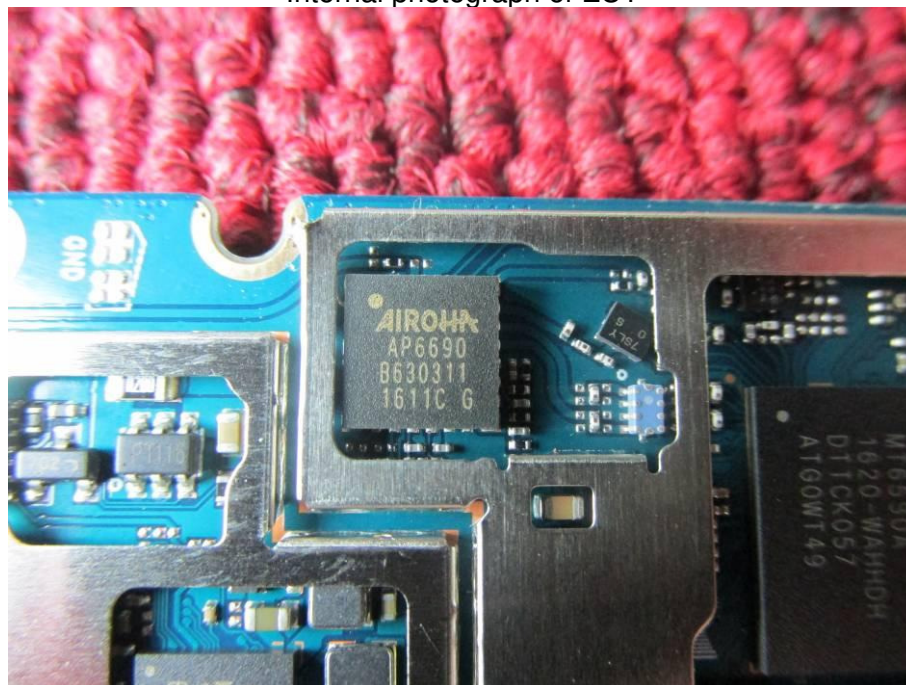
Internal photograph of EUT



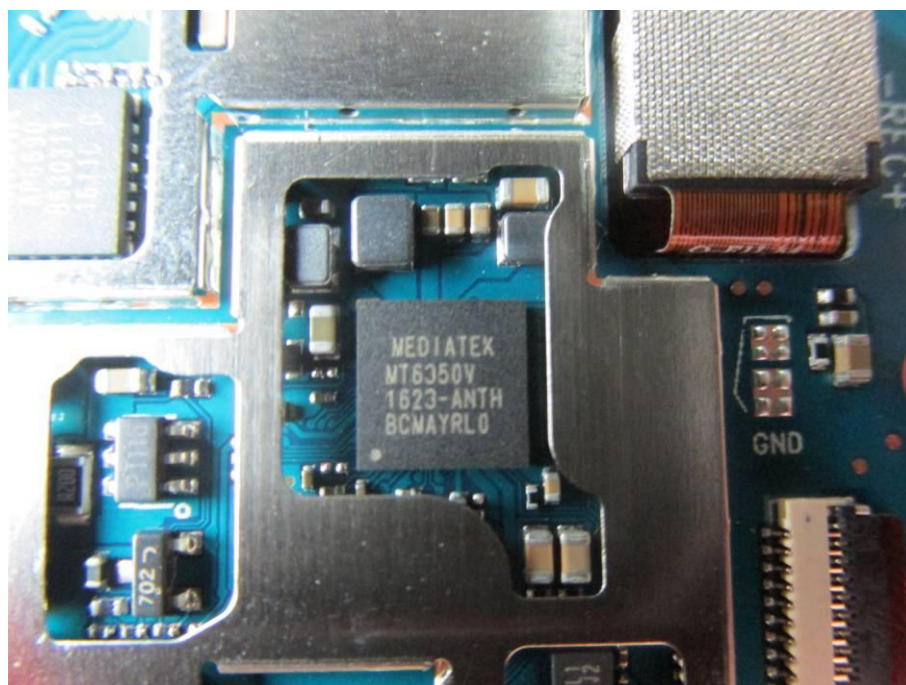
Internal photograph of EUT



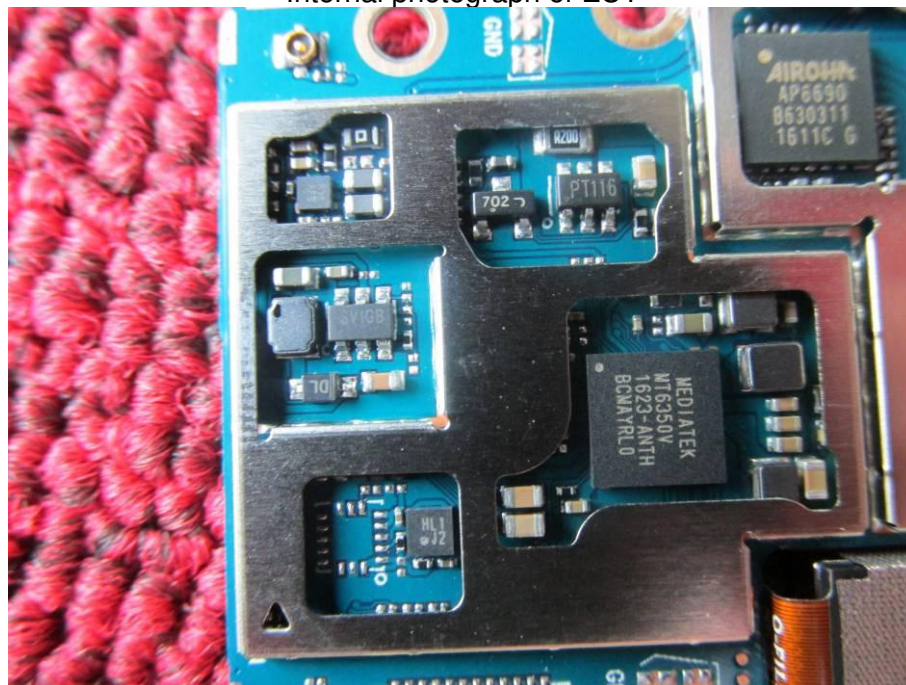
Internal photograph of EUT



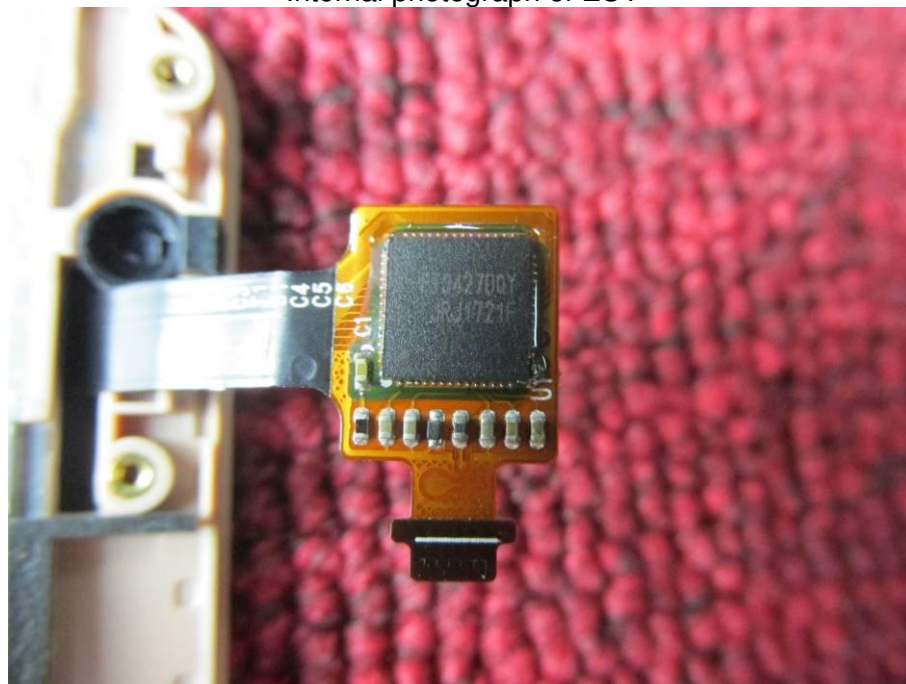
Internal photograph of EUT



Internal photograph of EUT



Internal photograph of EUT



---END OF REPORT---