

## Antenna Sample Datasheet

customer:	Shenzhen Fangcheng Baiyi Technology Co., LTD
entry name:	TU01
Material category:	BT antenna
Antenna Type	PIFA
Antenna Material	FPC
edition:	A0
Date:	2024. 8. 7

Antenna manufacturer: Hongji Wireless Communication (Shenzhen) Co., LTD

<http://www.honant.com.cn>

Address: 12 / F, West Block B, Building 8, Huaqiang Creative Industry Park,  
Sightseeing Road, Guangming District, Shenzhen

# Contents

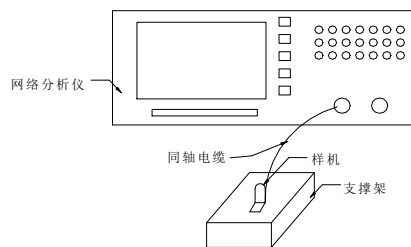
1: Antenna test equipment.....	1
2: Passive test report.....	3
3: Structural drawing.....	5
4: Antenna diagram.....	6

## 1: Antenna test equipment

List of meters: Agilent 5071B;

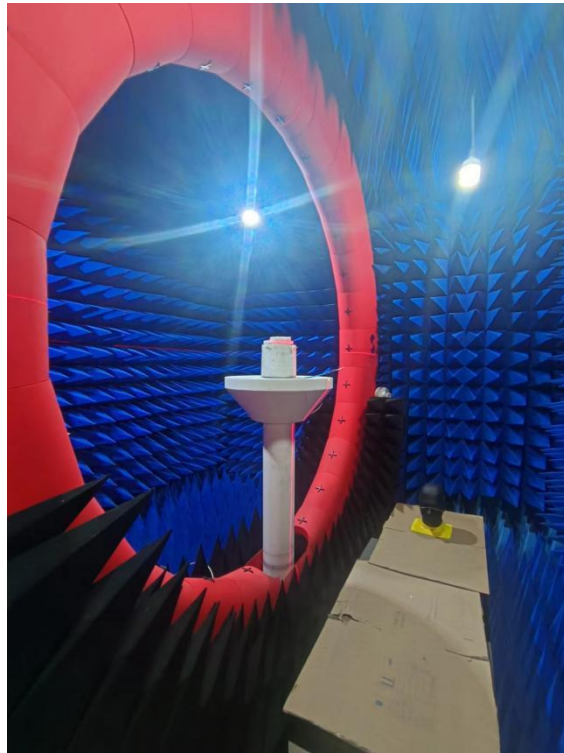


### 1.1 The principle diagram of the ETS anechoic chamber



Picture1. Antenna static test connection method

## 1.2 Pictures of the ETS anechoic chamber



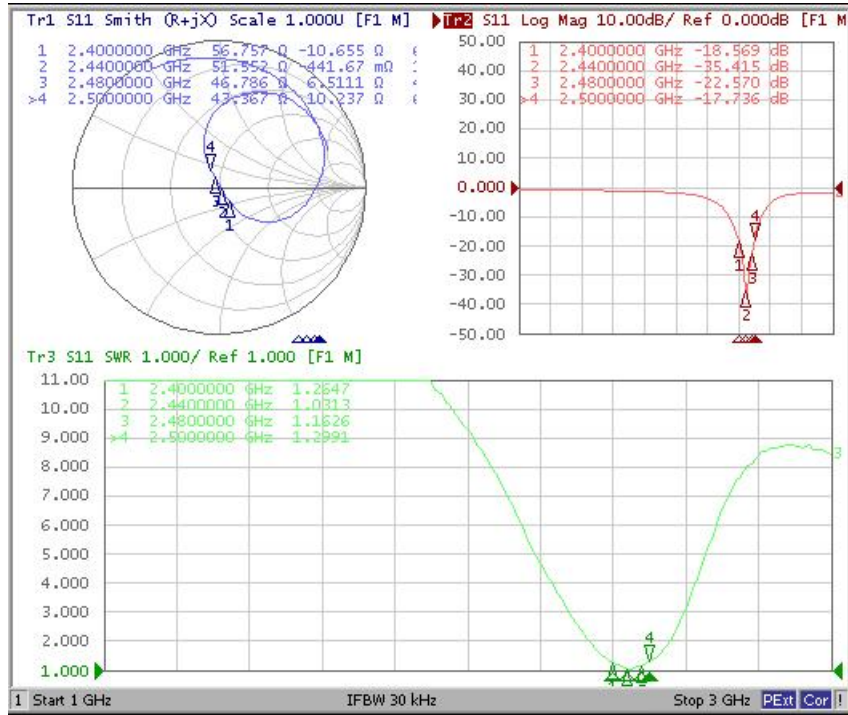
Inside the ETS anechoic chamber



Test Machine

## 2: Passive test report

### 2.1: BT antenna S11 parameters

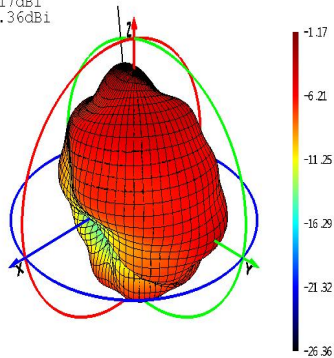


### 2.2: Passive efficiency of antenna

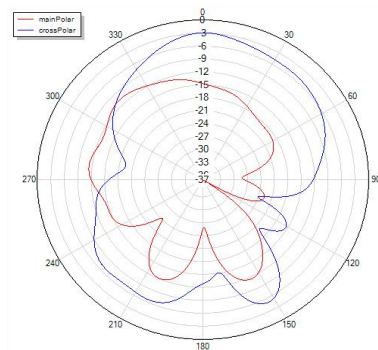
Freq(MHz)	Gain(dBi)	Efficiency(%)
2400	-1.17	34.76
2410	-1.16	34.79
2420	-1.09	35.39
2430	-1.05	35.10
2440	-1.01	34.80
2450	-0.95	36.21
2460	-0.91	37.52
2470	-0.82	38.46
2480	-0.78	40.36

## 2.3: Passive pattern of BT antenna

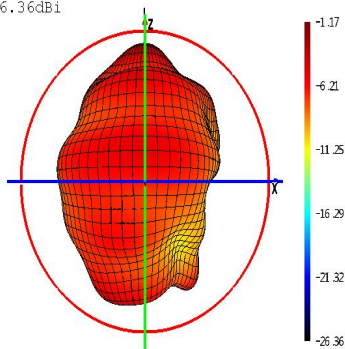
MAX: -1.17dBi  
 MIN: -26.36dBi



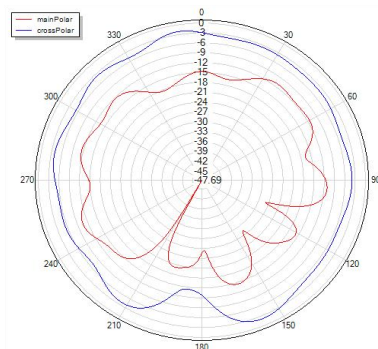
Phi=0 freq=2400MHz



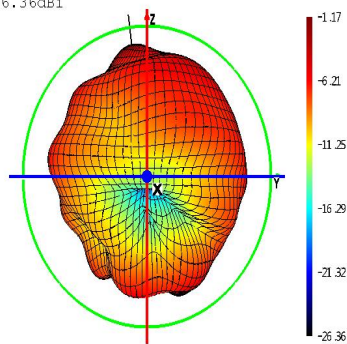
MAX: -1.17dBi  
 MIN: -26.36dBi



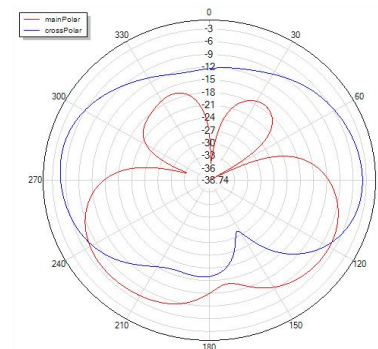
Phi=90 freq=2400MHz



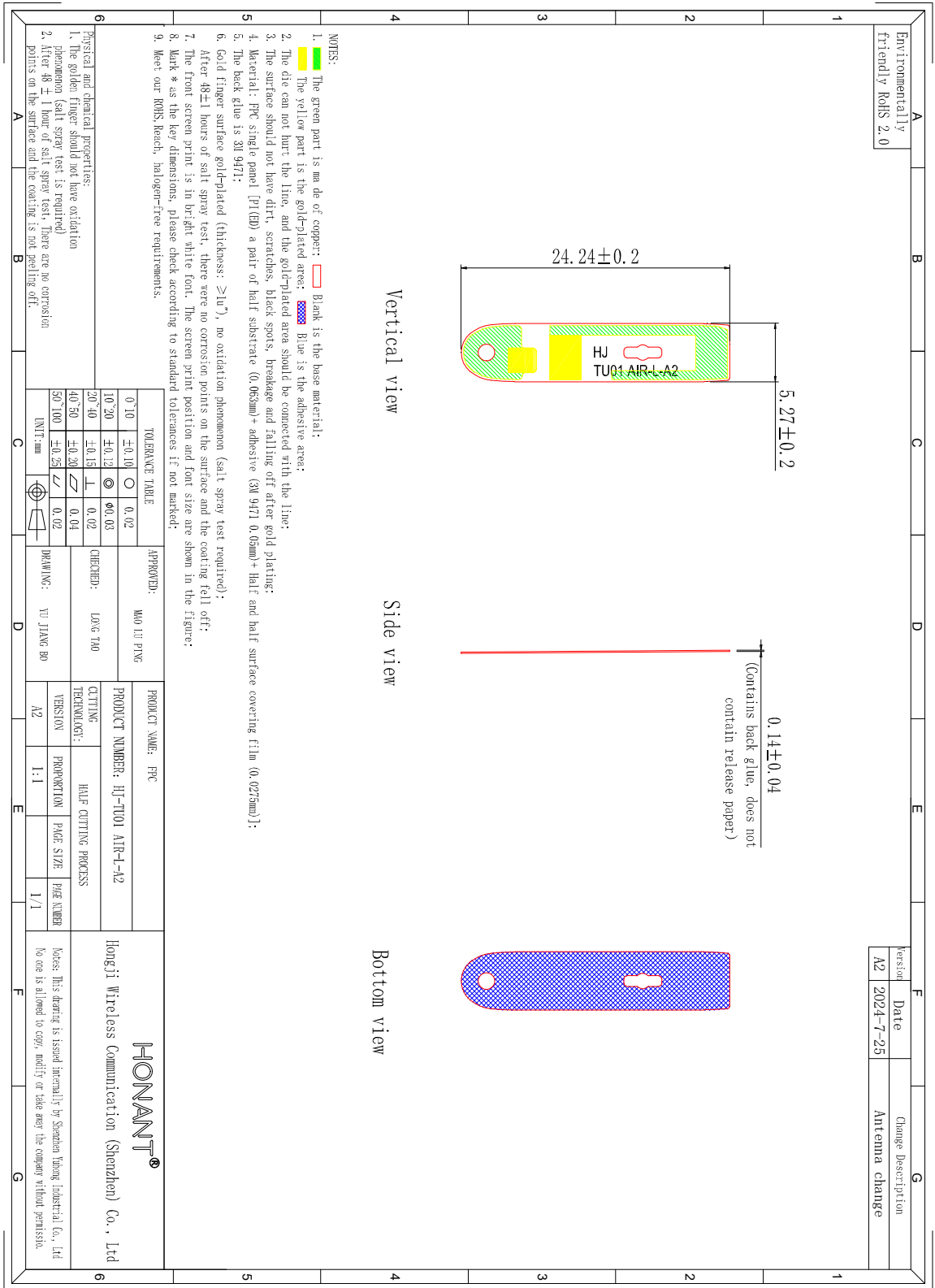
MAX: -1.17dBi  
 MIN: -26.36dBi



Theta=90 freq=2400MHz

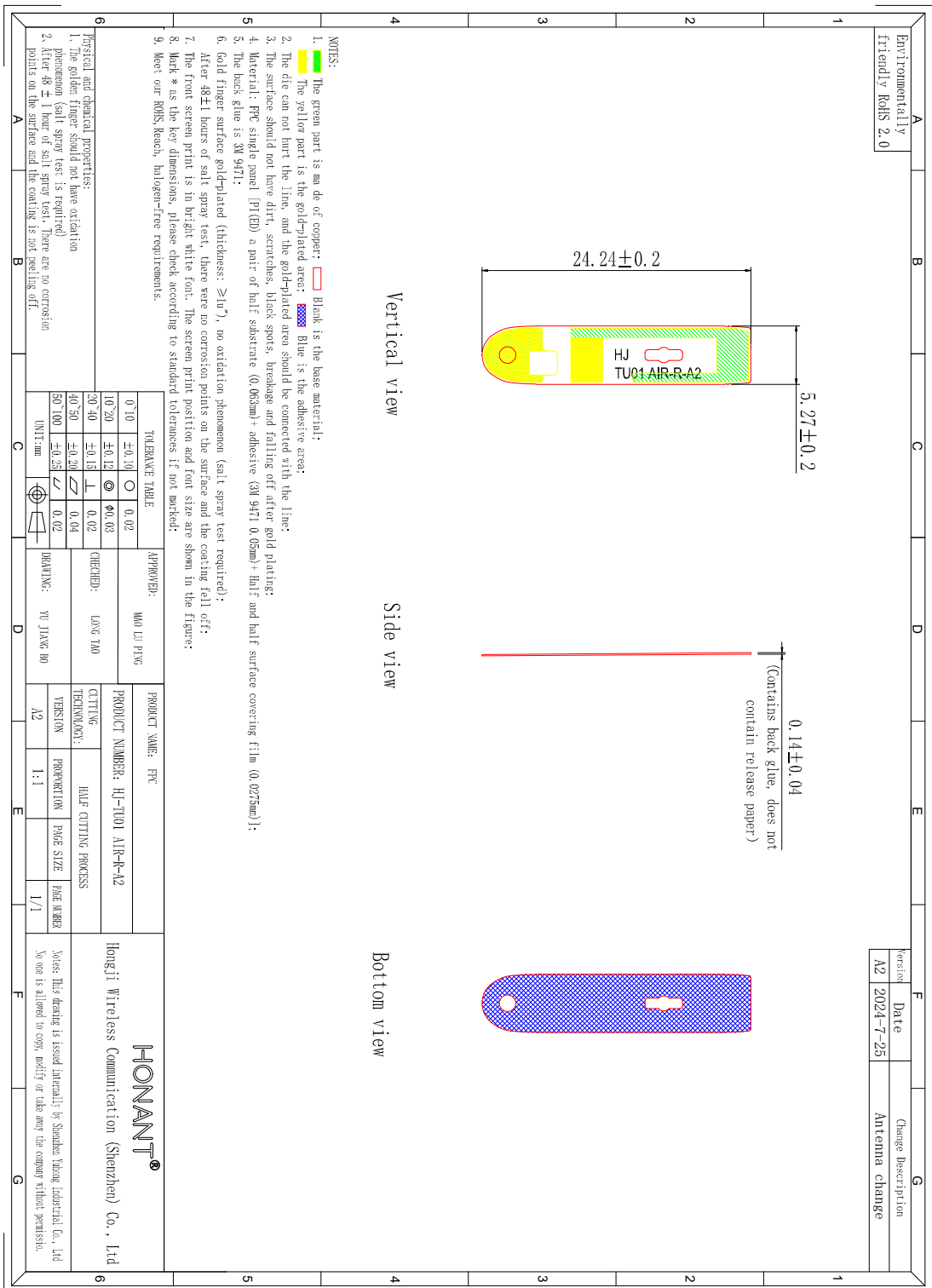


### 3.1 Structural drawing-Left





### 3.2 Structural drawing-Right





#### 4. Antenna diagram

