



User Manual

Smart Band Model: TSP-HB01

Hereby, TECNO MOBILE LIMITED, Declares that this Smart Band is in compliance with the essential requirements and other relevant provisions of directive 2014/53/EU.

Thank you for choosing Band 1, the high-performance wearable smart band will offer considerate gym experience for you.

Way of Wearing and Maintenance :

- 1. Assemble the smart band : align the main body with the square hole of the band, then insert it forcefully until the band is absolutely assembled with the main body properly.



- 2. Disassemble the smart band : hold the main body and the band respectively in each hand, then pull it out from one end by lateral force.



- 3. Please remind of the following tips when maintenance :
• Clean the band regularly and keep it dry, especially the inner side.
• Adjust the tightness of the band to ensure air circulation.
• Excessive skincare product is undesirable on wrist with a band on.

- Please stop wearing in case of skin allergy or any discomfort.
4. You can wear the band in bath or exercise scenario since it is sweatproof, rainproof and waterproof (up to 1.0m waterproof depth). Undesirable to wear when bathing water temperature is higher than 42°C.

Band Charging

- 1. Plug the USB end into the charger. 2. Icon will be displayed on the screen.



Diagram of Band Main Body



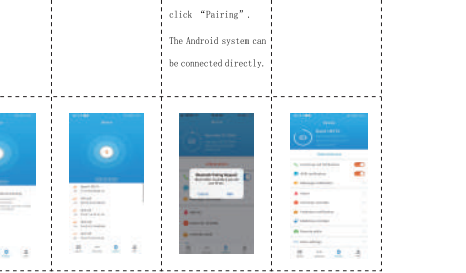
Downloading and Binding of Band APP

- 1. Power on Long press the touch control for 5 seconds or plug into a charger for charging.
2. For iOS system, search and download TECNO Band in APP store. For Android system, download and install TECNO Band in Google Play or scan the QR code for downloading.



Note : The mobile phone needs to support Android 5.1 or iOS 8.0 or above, and Bluetooth 4.0 or above.

- 3. Binding band
1. Click the "Device" in the mobile APP.
2. Click to bind "Device".
3. Click the ID number that is consistent with the band IBC.
4. The binding is successful.



Brief Introduction to APP Functions

APP home page: record current and historical data of various modes of movements, sleeping, heart rate and blood pressure, climbing.
Sport mode: record current and historical data of various modes of movements, sleeping, heart rate and blood pressure, climbing.
Device: open the account and search information.



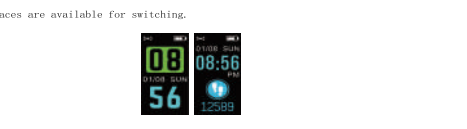
Band Function Interface

Start-up status : Click the touch control for switching the following interfaces :



Introduction of main interface :

Time, date, the symbol of battery and Bluetooth connected of the phone will be synchronized after the band and APP are first paired and well connected. Long press the touch control for 3 seconds to switch another interface. Multiple



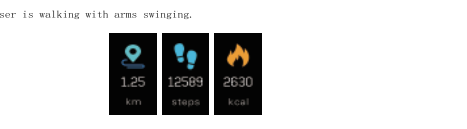
Thermometer :

Body T : stands for the human body temperature. Wear the band and measure the current human body temperature through the temperature sensor on the back. Measure T : stands for measuring temperature. Through the temperature sensor on the back, measure indoor and outdoor environment temperature, as well as the surface temperature of the human body.

The APP unit is set to English system, and the measurement temperature unit will be changed to Fahrenheit. Note : The data are for reference only and should not be used as a basis for medical purposes.

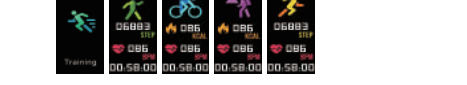


Count steps, distance and calories : The step-counting interface shows number of steps. Wear the band on the wrist, and count the steps, walking distance and consumed calories automatically when



Training :

On the training interface, long press the touch control for 3 seconds into the sport mode of walking, running, riding and climbing mountain. If the walking mode is selected, long press the touch control for 3 seconds to record the movement parameters.



Heart rate monitoring :

- 1. Click the touch control to switch to the heart rate monitoring interface, support real-time dynamic heart rate monitoring, in order to know your own health data. In the heart rate monitoring mode, the working time of the band will be reduced.
2. The heart rate sensor shall be closely attached to skin and well contacted

with skin when measuring the heart rate. The sensor light exposure in case of wearing the band too loosely could result in inaccurate measured figures. Don't look steadily at the green light of the sensor which may cause eye irritation. 3. Measure the heart rate when keep sitting quietly and the body not moving though this device can measure heart rate in a real-time and dynamic way; otherwise, the time is delayed for heart rate measurement, or no data can be measured. The user should not move until the band measures the data of heart rate, and then the data of real-time dynamic heart rate can be checked. 4. Measure the heart rate after having a rest if there is a big difference in measured data. The average value obtained through five times of consecutive measurement is more accurate. 5. This device is used to measure the real-time dynamic heart rate. So the heart rate is varied with different conditions such as speaking, dining or drinking wine. It shall be subject to the actual case. 6. Be sure that there is no dirt at the bottom of the heart rate sensor when conduct measurement. Skin color, hair density, tattoo or scar may affect the accuracy of the measuring results, in which cases please re-measure the heart rate. 7. Long time measurement may cause heating of the device, in case of any discomfort, please remove the device and do not wear it until it cools down. 8. The chilled weather may affect the measuring result, please conduct the measurement in warm condition.



Message :



Switch to the message interface, long press the touch control for 3 seconds to access the message content. Click the touch control to switch to the next piece of message content. Content includes incoming call and messages of social software. At most seven pieces of messages can be saved. When it is up to seven pieces, the messages displayed before would be substituted one after another.

Blood pressure :

The blood pressure shall be measured in a quiet environment and at proper temperature. Have a rest for at least 5 minutes before measurement. Avoid nervous, anxious and exciting feelings. The measurement shall be repeated three times at an interval of 2 minutes. Record the average value of three measuring results.

- 1. Stop watch : Switch to the stop watch interface, long press the interface into the stop watch function. Click the touch control to start timing, and click the touch control again to pause timing. Long press the touch control to quit the stop watch function.



- 2. Find phone : Switch to the find phone interface, shake the band, and the mobile phone will make a ringtone simultaneously.

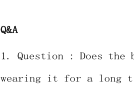


- 3. The MAC address The MAC address represents the hardware address of the band, is the unique identifier of the band. The MAC address cannot be modified. If the mobile phone is used to find the band, the corresponding band can be found by only checking the last four digits of MAC. The MAC address is used to identify the band and connect to the mobile phone quickly.

- 4. Power off : Long press the touch control for over 3 seconds on the power off interface. The band will automatically shut down.



- 5. Restore factory settings Long press the touch control for over 3 seconds, start to clear off all information in the band, and restore to default factory settings.



Q&A

- 1. Question : Does the band generate radiation? Does it do harm to body when wearing it for a long time? Answer : As applying the low power consumption Bluetooth technology, this

product has less radiation than Bluetooth earphone, and its signal launching intensity is not more than 1/1000 of mobile phone's. The WHO didn't find any impact of Bluetooth signal on human body through over ten years of research and general survey. So rest assured to use this product.

- 2. Question : What can I do if the band is not searched as prompted? Answer : First, please check the battery status of the band. Second, please put the band near the mobile phone, and try connecting to the band again. If you are still unable to connect to the band by above operations, please try switching off and on the mobile phone Bluetooth once, or restart the mobile phone.

- 3. Question : What can I do if the Bluetooth connection fails occasionally? Answer :

- 1. The connecting time may be different each time as the signal may be disturbed in Bluetooth wireless connection. If it is not connected for a long time, please make sure your operation is done in the place where there is no disturbance of magnetic field or Bluetooth device.
2. Parts of mobile phone Bluetooth services become abnormal occasionally in re-starting up, so that the Bluetooth may not be connected.
3. Under common circumstances, the Bluetooth is connected normally when you restart the mobile phone Bluetooth function.

- 4. Question : Why is there no vibration of the band to remind after setting the notification of incoming call? Answer : First, please check the mobile phone Bluetooth is switched on and

connected to the band or not. Second, please check the Band APP is running (or backstage running) or not for Android and iOS system.

Note : Some memory cleaner software may clean or intercept the APP, please add the Band APP to the white list.

- 5. Question : Why does the band give no prompt even if the message reminder of Wechat and QQ has been set? Answer : The following requirements should be met for the message reminder of Wechat and QQ :

- 1. The mobile phone is under the sleeping and non-use mode, and the backstage tasks shall not be switched off;
2. Both computer and mobile phone cannot be used online at the same time;
3. The band is always connected to the mobile phone, and the Bluetooth needs to be switched on all the time;
4. Open the permission management of the mobile phone, and set to allow the backstage to pop up the interface.

Note : The upper menu can pop up the message when the mobile phone has message coming, which indicates the setting is completed. Meanwhile, the message will be pushed to the band. If restarting the mobile phone, click the message reminder, enter the notification center, find the TECNO Band device message notification and re-open the option.

- 6. Question : Why does heart rate measure fail? Answer : Please keep in a quiet status when measuring heart rate, and keep the bottom of the band closely attached to the arm without obvious gap. Do not

wave arms during measurement.

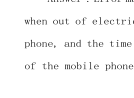
- 7. Question : Why is the Bluetooth connection icon blinking all the time? Answer : It mainly reminds the users that the message will not be received and pushed if the APP is not connected with the band. Launch APP and connect to the band, the Bluetooth connection icon can be displayed normally.

- 8. Question : Why the band cannot be charged? Answer :

- 1. Please check the band inserting direction is correct or not;
2. The battery has a pre-charging period when the battery of the band is too low (the band has been set aside and not been used for a long time). Note : Generally it is charged normally after two or three sinites when the charger is plugged in.
9. Question : Which factors can affect the measuring result of heart rate? Answer : Non-standard way of band wearing may affect the measurement of heart rate. For example, the insufficient attachment of band to skin which may cause light leakage, arm swinging, slight movement of band on skin, too tight in band wearing, too high in arm raising, and clenching fists, all of which may affect blood circulation as well as the signal of heart rate. The right measuring ways are : lay your arms flat, take it easy and keep quiet, and make sure the band is closely attached to the arm.

Note : Skin color, hair, tattoo, or scar and some individual differences may also affect the signal of heart rate even when the band is worn in a correct way.

- 10. Question : Why is the time of the band inaccurate? Answer : Error may occur with the time of the band after the band is recharged when out of electricity. In this case, please connect the band to the mobile phone, and the time of the band will be synchronized automatically with that of the mobile phone for correction.



Warning: Please consult your doctor before you take part in a new sport. The smart band should not be used as a basis for medical purposes though it can monitor the real-time dynamic heart rate.

CAUTION:

- 1. Risk of explosion if battery is replaced by an incorrect type, dispose of used batteries according to the instructions.
2. The product shall only be connected to a USB interface of version USB2.0
3. Adapter shall be installed near the equipment and shall be easily accessible.
4. EU Temperature: -20°-55° C (Standalone), -20°-40° C (With Parts).

Operating Frequency: Bluetooth: 2402-2480MHz Modulation mode: GFSK Max. Of Transmit power: BLE: -3.97dBm

FCC Warning

changes or modifications not expressly approved by the party responsible for compliance could void the user's authority to operate the equipment. This device complies with Part 15 of the FCC Rules. Operation is subject to the following two conditions: (1) this device must accept any interference received, including interference that may cause undesired operation.

NOTE: This equipment has been tested and found to comply with the limits for a Class B digital device, pursuant to Part 15 of the FCC Rules. These limits are designed to provide reasonable protection against harmful interference in a residential installation. This equipment generates, uses and can radiate radio frequency energy and, if not installed and used in accordance with the instructions, may cause harmful interference to radio communications. However, there is no guarantee that interference will not occur in a particular installation.

- If this equipment does cause harmful interference to radio or television reception, which can be determined by turning the equipment off and on, the user is encouraged to try to correct the interference by one or more of the following measures:
-- Reorient or relocate the receiving antenna.
-- Increase the separation between the equipment and receiver.
-- Connect the equipment into an outlet on a circuit different from that to which the receiver is connected.
-- Consult the dealer or an experienced radio/TV technician for help.

RF Exposure Statement The device has been evaluated to meet general RF exposure requirement. The device can be used in portable exposure condition without restriction.

EU DECLARATION OF CONFORMITY

in accordance with Annex VI of Directive 2014/53/EU of the European Parliament and of the Council For the following Radio equipment: Model: TSP-HB01 Product: Smart Band Trade name or Brand: TECNO Software / Hardware number: V1.0.1/ V1.1 2. Name and address of the manufacturer or his authorised representative: Manufacturer: TECNO MOBILE LIMITED Address: ROOM 604 6/F SOUTH TOWER WORLD FINANCE CTR HARBOUR CITY 17 CANTON ROAD TST KL. 3. This declaration of conformity is issued under the sole responsibility of the Manufacturer. 4. Object of the declaration (identification of the radio equipment allowing traceability; it may include a colour image of sufficient clarity where necessary for the identification of the radio equipment): 5. The object of the declaration described above is in conformity with the relevant Union harmonization legislation: Directive 2014/53/EU (RED)

6. References to the relevant harmonised standards used or references to the other technical specifications in relation to which conformity is declared:

- Article 3.1a Health: EN 62479:2010 Article 3.1a Electrical Safety: EN62368-1:2014+A11:2017 Article 3.1b: ETSI EN 301 489-1 V2.2.3 (2019-11) Draft ETSI EN 301 489-17 V3.2.2 (2019-12) Article 3.2: ETSI EN 300 328 V2.2.2 (2019-07)

7. Notified Body Name: Eurofins MET Laboratories, Inc. Notified Body Number: D980 Notified Body Assessment Performed: Module B/C on Article 3.1a, 3.1b, 3.2 and 3.3 Technical File Identification Number: N/A

8. Where applicable, description of accessories and components, including software, which allow the radio equipment to operate as intended and covered by the EU declaration of conformity: User instructions are provided in the User Manual. The Software and Hardware versions are specified above.

9. Additional information: Referring to Article 10.2 of the Directive, this equipment is so constructed that it can be operated in all Member States, without infringing applicable requirements on the use of radio spectrum. Referring to Article 10.10 of the Directive, there are no restrictions on putting this equipment into service or of requirements for authorisation of use. Please refer to the User Manual for details.

On behalf of: Manufacturer: TECNO MOBILE LIMITED Address: ROOM 604 6/F SOUTH TOWER WORLD FINANCE CTR HARBOUR CITY 17 CANTON ROAD TST KL.

(place and date of issue): Shenzhen, 2019-12-23

(name, function): Yiting Luo / Manager (signature): Yiting Luo

