	Annex B: Measurement Results
	Tested Model : T660
	Report Number: FCC17060493A

I. RESULTS

<u>TYPE</u>	<u>BAND</u>	<u>PARAMETERS</u>
Phone	CUSTOM	<u>Measurement 1</u> : Right Head with Cheek device position (band GPRS850_4Tx)
Phone	CUSTOM	<u>Measurement 2</u> : Validation Plane with Body device position (band GPRS850_4Tx)
Phone	CUSTOM	<u>Measurement 3</u> : Left Head with Cheek device position (band GPRS1900_4Tx)
Phone	CUSTOM	<u>Measurement 4</u> : Validation Plane with Body device position (band GPRS1900_4Tx)

MEASUREMENT 1

Type: Phone measurement (Complete)

Date of measurement: 10/6/2017

Measurement duration: 8 minutes 16 seconds

A. Experimental conditions.

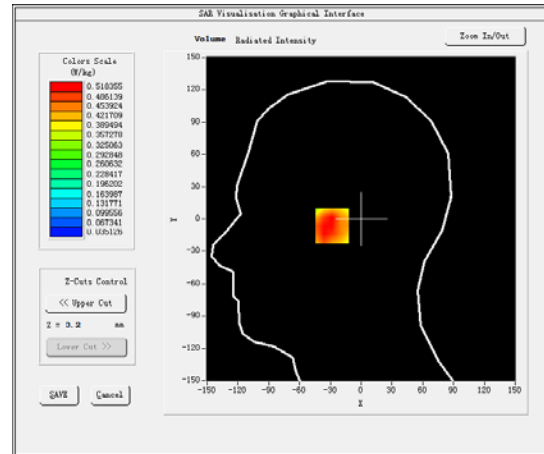
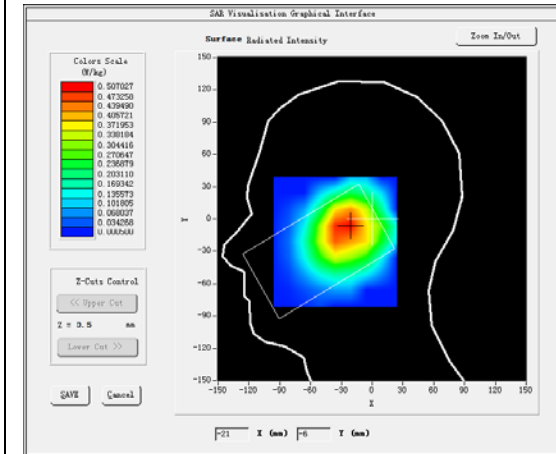
<u>Area Scan</u>	<u>dx=15mm dy=15mm</u>
<u>ZoomScan</u>	<u>5x5x7,dx=8mm dy=8mm</u> <u>dz=5mm,Complete</u>
<u>Phantom</u>	<u>Right head</u>
<u>Device Position</u>	<u>Cheek</u>
<u>Band</u>	<u>CUSTOM (GPRS850_4Tx)</u>
<u>Channels</u>	<u>High</u>
<u>Signal</u>	<u>Duty Cycle: 2.00 (Crest factor: 2.0)</u>
<u>Conversion factor</u>	<u>4.93</u>

B. SAR Measurement Results

Frequency (MHz)	848.799988
Relative permittivity (real part)	41.500000
Relative permittivity (imaginary part)	19.400000
Conductivity (S/m)	0.914818
Variation (%)	3.050000

SURFACE SAR

VOLUME SAR

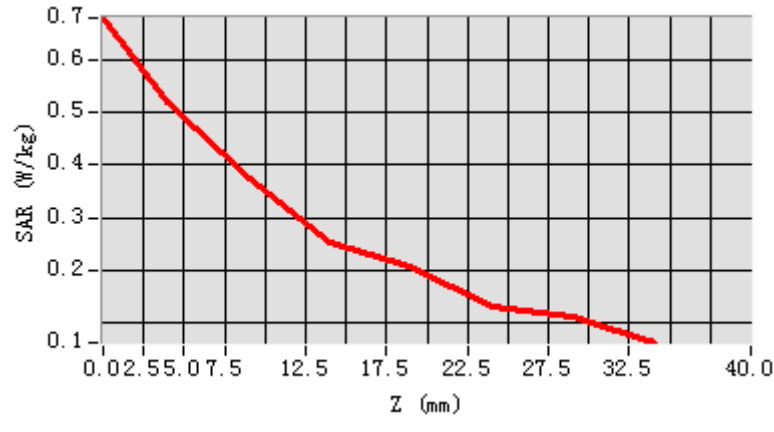


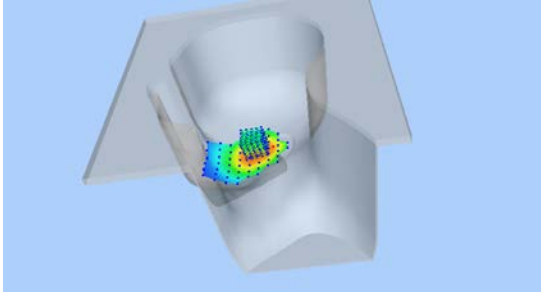
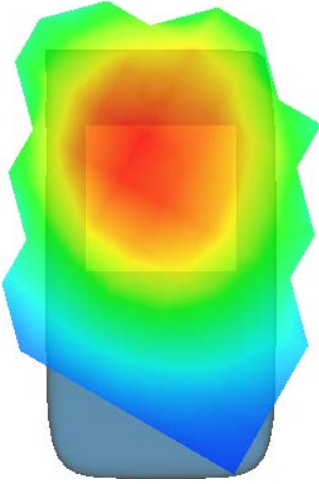
Maximum location: X=-24.00, Y=-6.00

SAR Peak: 0.71 W/kg

SAR 10g (W/Kg)	0.353304
SAR 1g (W/Kg)	0.506684

Z (mm)	0.00	4.00	9.00	14.00	19.00	24.00	29.00
SAR (W/Kg)	0.6780	0.5184	0.3726	0.2535	0.2080	0.1316	0.1109



3D screen shot	Hot spot position
	

MEASUREMENT 2

Towards-ground-high

Type: Phone measurement (Complete)

Date of measurement: 10/6/2017

Measurement duration: 10 minutes 14 seconds

A. Experimental conditions.

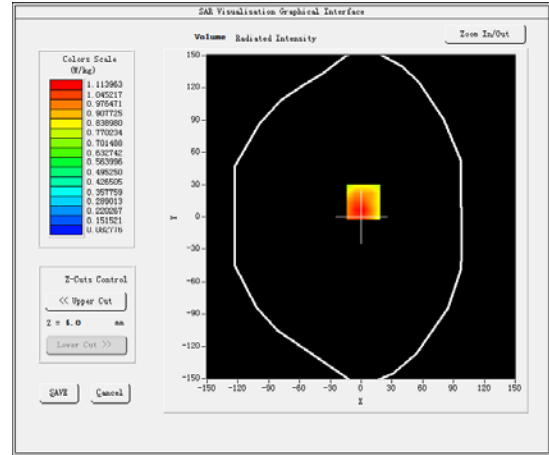
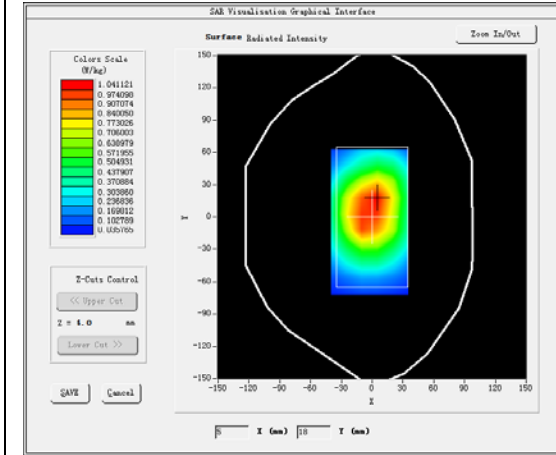
<u>Area Scan</u>	<u>dx=15mm dy=15mm</u>
<u>ZoomScan</u>	<u>5x5x7, dx=8mm dy=8mm</u> <u>dz=5mm, Complete</u>
<u>Phantom</u>	<u>Validation plane</u>
<u>Device Position</u>	<u>Body</u>
<u>Band</u>	<u>CUSTOM (GPRS850 4Tx)</u>
<u>Channels</u>	<u>High</u>
<u>Signal</u>	<u>Duty Cycle: 2.00 (Crest factor: 2.0)</u>
<u>Conversion factor</u>	<u>5.07</u>

B. SAR Measurement Results

Frequency (MHz)	848.799988
Relative permittivity (real part)	55.157539
Relative permittivity (imaginary part)	20.929108
Conductivity (S/m)	0.986924
Variation (%)	4.220001

SURFACE SAR

VOLUME SAR

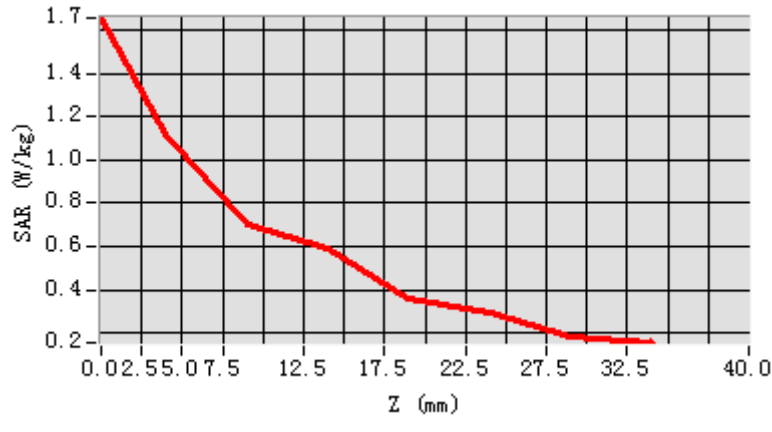


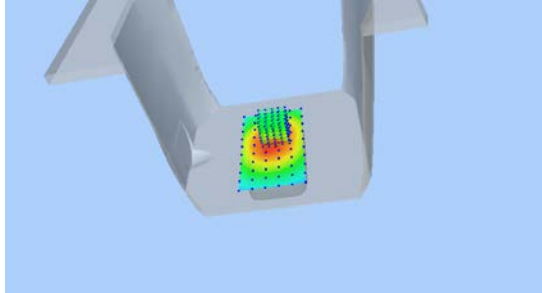
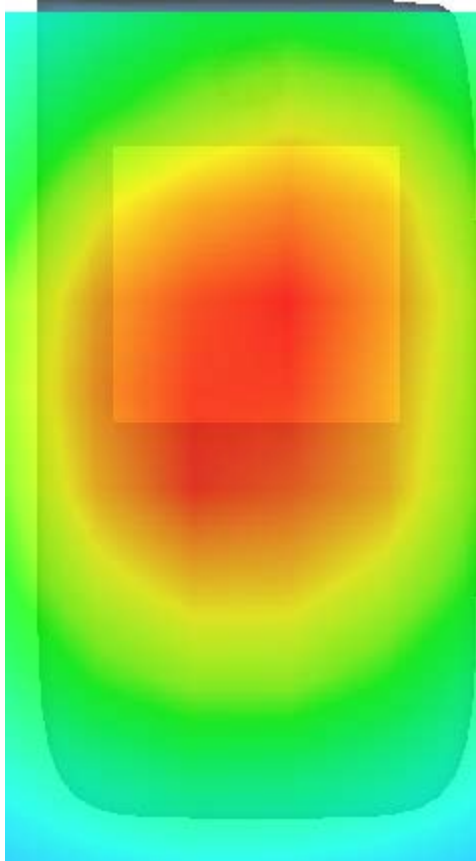
Maximum location: X=2.00, Y=14.00

SAR Peak: 1.50 W/kg

SAR 10g (W/Kg)	0.430796
SAR 1g (W/Kg)	0.772644

Z (mm)	0.00	4.00	9.00	14.00	19.00	24.00	29.00
SAR (W/Kg)	1.6542	1.1140	0.7013	0.5900	0.3555	0.2999	0.1803



3D screen shot	Hot spot position
	

MEASUREMENT 3

Type: Phone measurement (Complete)

Date of measurement: 13/6/2017

Measurement duration: 8 minutes 11 seconds

A. Experimental conditions.

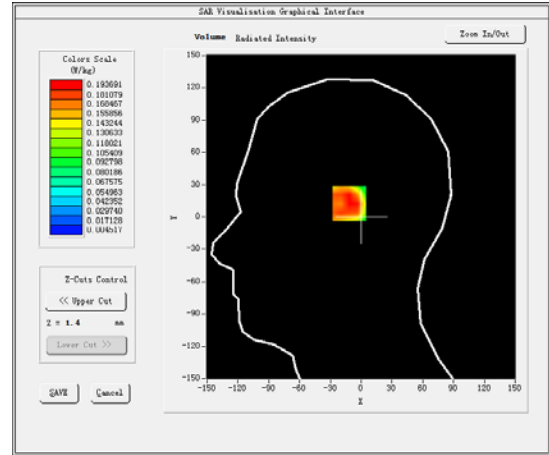
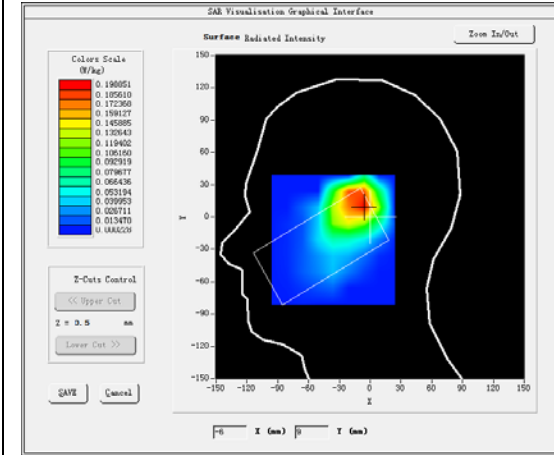
<u>Area Scan</u>	<u>dx=15mm dy=15mm</u>
<u>ZoomScan</u>	<u>5x5x7,dx=8mm dy=8mm</u> <u>dz=5mm,Complete</u>
<u>Phantom</u>	<u>Left head</u>
<u>Device Position</u>	<u>Cheek</u>
<u>Band</u>	<u>CUSTOM (GPRS1900 4Tx)</u>
<u>Channels</u>	<u>Low</u>
<u>Signal</u>	<u>Duty Cycle: 2.00 (Crest factor: 2.0)</u>
<u>Conversion factor</u>	<u>4.63</u>

B. SAR Measurement Results

Frequency (MHz)	1850.199951
Relative permittivity (real part)	39.923779
Relative permittivity (imaginary part)	13.336920
Conductivity (S/m)	1.370887
Variation (%)	-1.390000

SURFACE SAR

VOLUME SAR

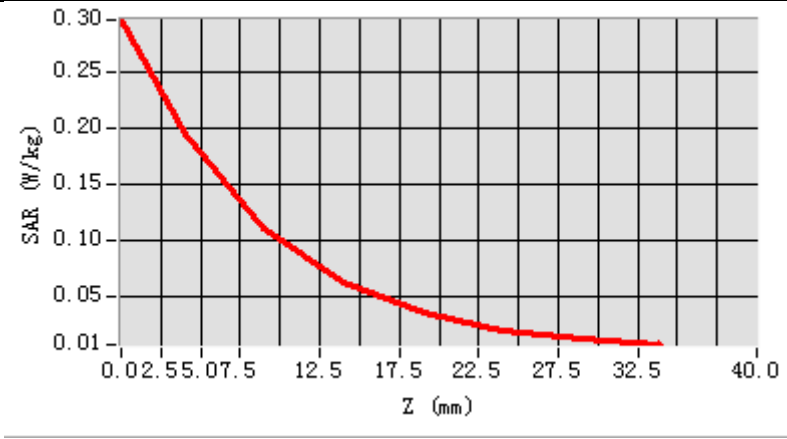


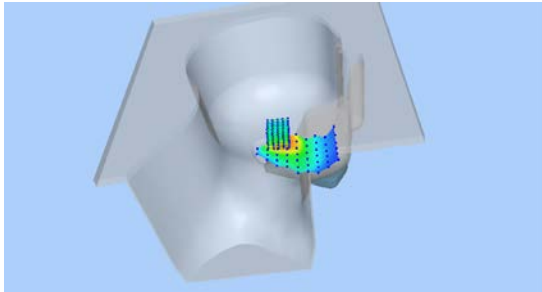
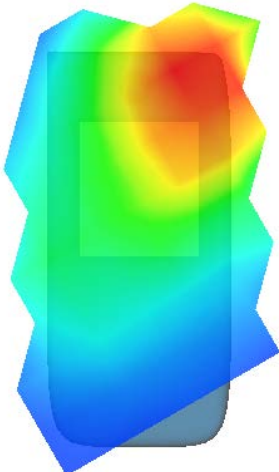
Maximum location: X=-8.00, Y=13.00

SAR Peak: 0.33 W/kg

SAR 10g (W/Kg)	0.108430
SAR 1g (W/Kg)	0.191681

Z (mm)	0.00	4.00	9.00	14.00	19.00	24.00	29.00
SAR (W/Kg)	0.2963	0.1937	0.1099	0.0629	0.0351	0.0198	0.0121



3D screen shot	Hot spot position
	

MEASUREMENT 4

Towards-ground-low

Type: Phone measurement (Complete)

Date of measurement: 13/6/2017

Measurement duration: 9 minutes 38 seconds

A. Experimental conditions.

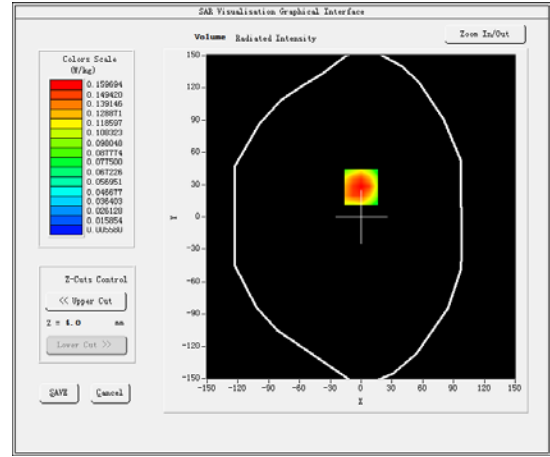
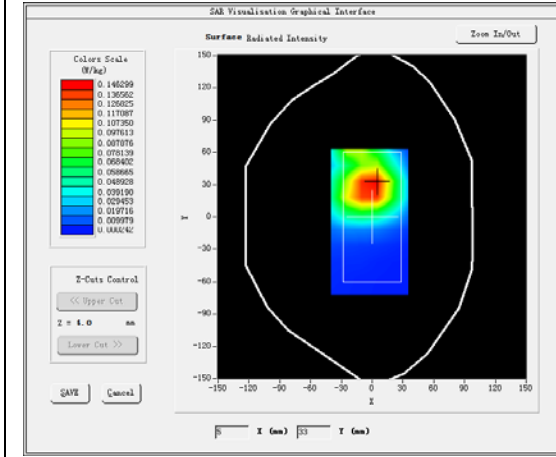
<u>Area Scan</u>	<u>dx=15mm dy=15mm</u>
<u>ZoomScan</u>	<u>5x5x7,dx=8mm dy=8mm</u> <u>dz=5mm,Complete</u>
<u>Phantom</u>	<u>Validation plane</u>
<u>Device Position</u>	<u>Body</u>
<u>Band</u>	<u>CUSTOM (GPRS1900 4Tx)</u>
<u>Channels</u>	<u>Low</u>
<u>Signal</u>	<u>Duty Cycle: 2.00 (Crest factor: 2.0)</u>
<u>Conversion factor</u>	<u>4.78</u>

B. SAR Measurement Results

Frequency (MHz)	1850.199951
Relative permittivity (real part)	53.232899
Relative permittivity (imaginary part)	14.493960
Conductivity (S/m)	1.489818
Variation (%)	2.730000

SURFACE SAR

VOLUME SAR

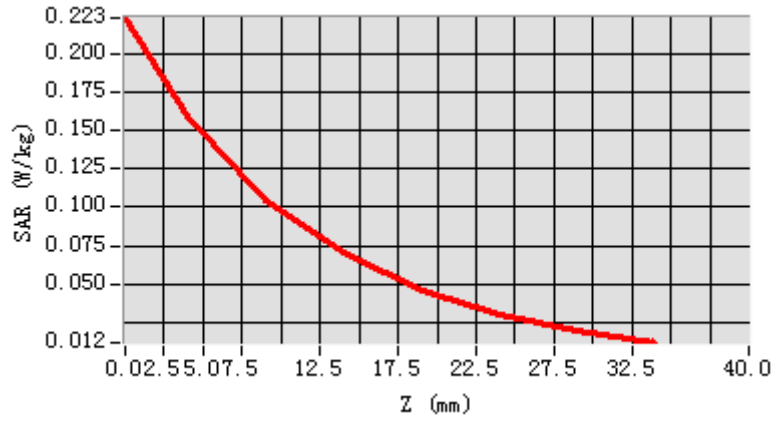


Maximum location: X=0.00, Y=28.00

SAR Peak: 0.23 W/kg

SAR 10g (W/Kg)	0.094838
SAR 1g (W/Kg)	0.153585

Z (mm)	0.00	4.00	9.00	14.00	19.00	24.00	29.00
SAR (W/Kg)	0.2229	0.1597	0.1042	0.0703	0.0453	0.0298	0.0194



3D screen shot	Hot spot position
