



Annex A: System Check

Project Name : T472

Report Number:

FCC16073812-4

I. RESULTS

<u>TYPE</u>	<u>BAND</u>	<u>PARAMETERS</u>
Validation	CW835	<u>Measurement 1</u> : Validation Plane with Dipole device position on Middle Channel in CW mode
Validation	CW835	<u>Measurement 2</u> : Validation Plane with Dipole device position on Middle Channel in CW mode
Validation	CW1900	<u>Measurement 3</u> : Validation Plane with Dipole device position on Middle Channel in CW mode
Validation	CW1900	<u>Measurement 4</u> : Validation Plane with Dipole device position on Middle Channel in CW mode

MEASUREMENT 1

BODY

Type: Validation measurement (Complete)

Date of measurement: 16/7/2016

Measurement duration: 11 minutes 42 seconds

A. Experimental conditions.

<u>Area Scan</u>	<u>dx=8mm dy=8mm</u>
<u>ZoomScan</u>	<u>5x5x7, dx=8mm dy=8mm dz=5mm, Complete</u>
<u>Phantom</u>	<u>Validation plane</u>
<u>Device Position</u>	<u>Dipole</u>
<u>Band</u>	<u>CW835</u>
<u>Channels</u>	<u>Middle</u>
<u>Signal</u>	<u>CW (Crest factor: 1.0)</u>
<u>Conversion factor</u>	<u>5.07</u>

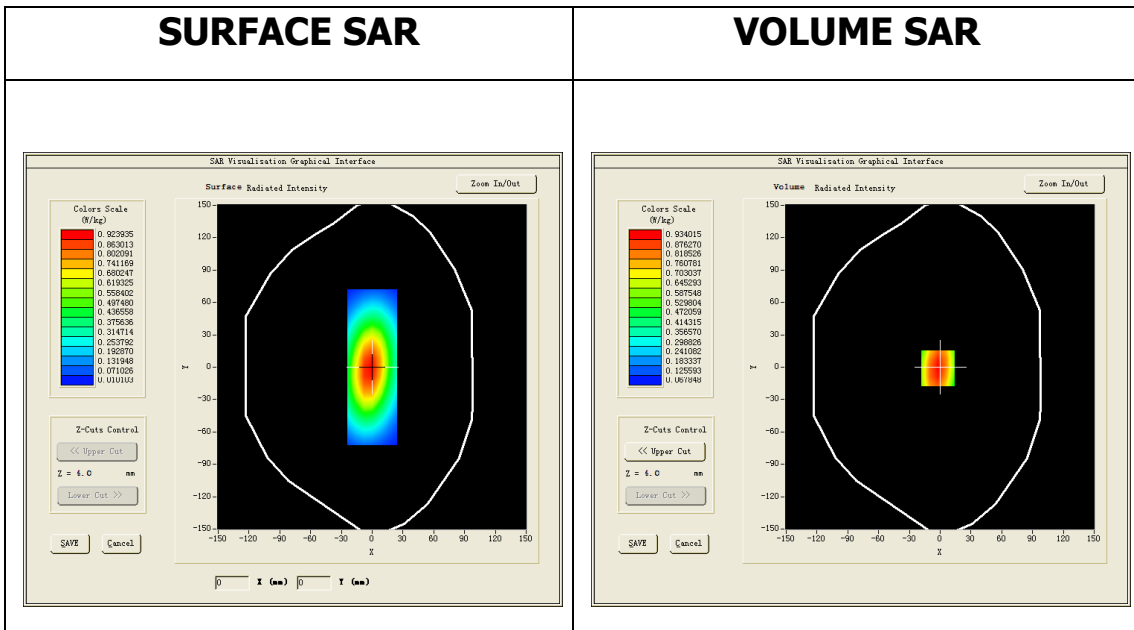
B. SAR Measurement Results

Middle Band SAR (Channel -1):

Frequency (MHz)	835.000000
Relative permittivity (real part)	55.219501
Relative permittivity (imaginary part)	20.868099
Conductivity (S/m)	0.968048
Variation (%)	-0.110000

SURFACE SAR

VOLUME SAR

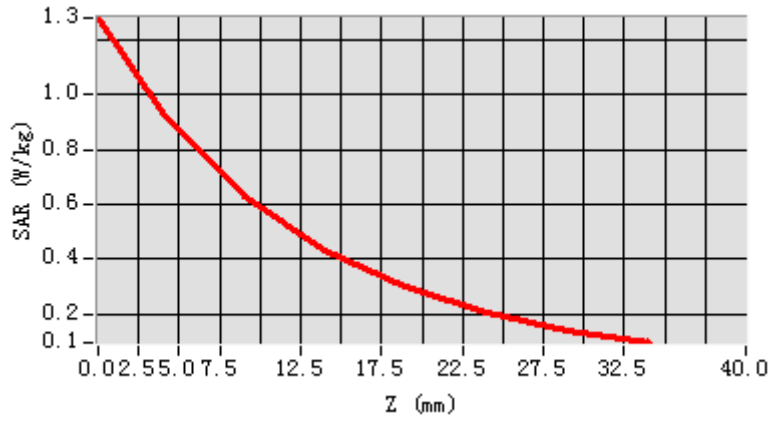


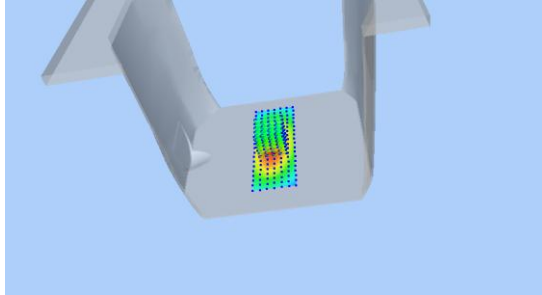
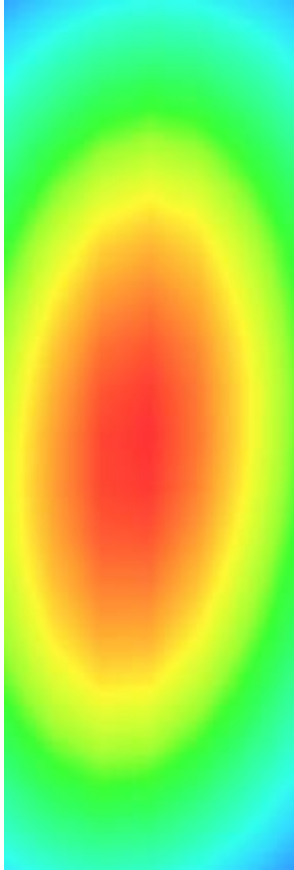
Maximum location: X=-2.00, Y=-1.00

SAR Peak: 1.37 W/kg

SAR 10g (W/Kg)	6.22746
SAR 1g (W/Kg)	9.60713

Z (mm)	0.00	4.00	9.00	14.00	19.00	24.00	29.00
SAR (W/Kg)	1.2796	0.9340	0.6314	0.4339	0.2996	0.2062	0.1409



3D screen shot	Hot spot position
	

MEASUREMENT 2

HEAD

Type: Validation measurement (Complete)

Date of measurement: 16/7/2016

Measurement duration: 11 minutes 43 seconds

A. Experimental conditions.

<u>Area Scan</u>	<u>dx=8mm dy=8mm</u>
<u>ZoomScan</u>	<u>5x5x7,dx=8mm dy=8mm</u> <u>dz=5mm,Complete</u>
<u>Phantom</u>	<u>Validation plane</u>
<u>Device Position</u>	<u>Dipole</u>
<u>Band</u>	<u>CW835</u>
<u>Channels</u>	<u>Middle</u>
<u>Signal</u>	<u>CW (Crest factor: 1.0)</u>
<u>Conversion factor</u>	<u>5.07</u>

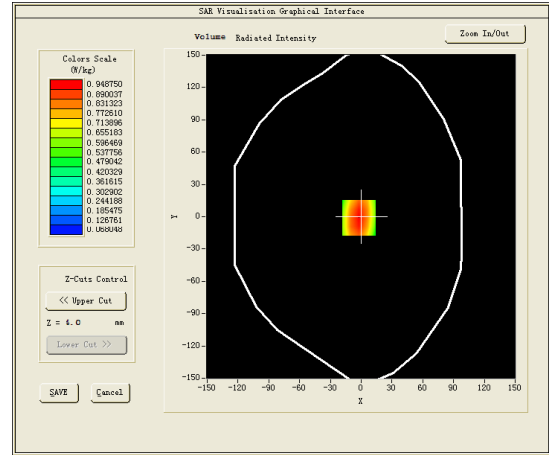
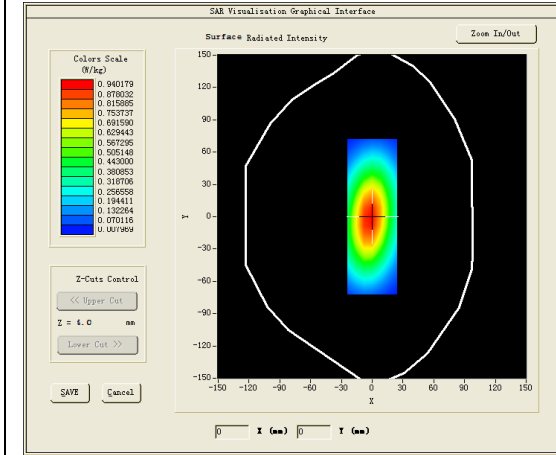
B. SAR Measurement Results

Middle Band SAR (Channel -1):

Frequency (MHz)	835.000000
Relative permittivity (real part)	41.450901
Relative permittivity (imaginary part)	19.477900
Conductivity (S/m)	0.903558
Variation (%)	0.250000

SURFACE SAR

VOLUME SAR

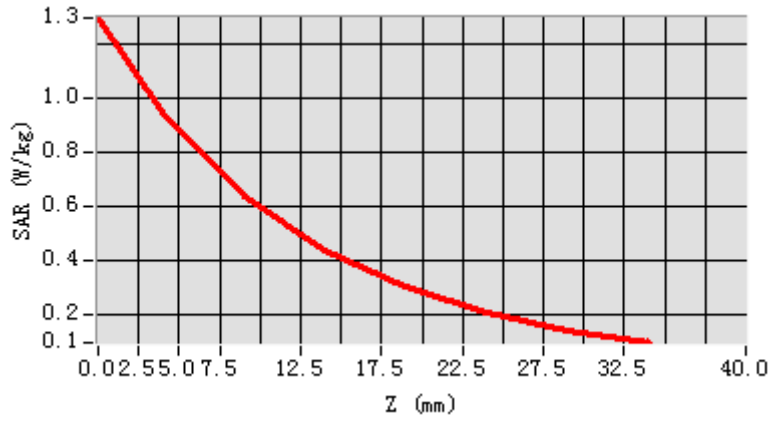


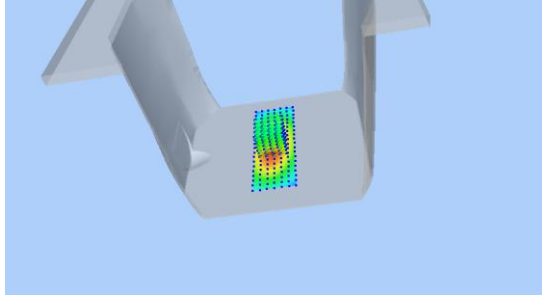

Maximum location: X=-2.00, Y=-1.00

SAR Peak: 1.30 W/kg

SAR 10g (W/Kg)	5.91216
SAR 1g (W/Kg)	9.13485

Z (mm)	0.00	4.00	9.00	14.00	19.00	24.00	29.00
SAR (W/Kg)	1.3002	0.9487	0.6411	0.4403	0.3039	0.2089	0.1425



3D screen shot	Hot spot position
	

MEASUREMENT 3

BODY

Type: Validation measurement (Complete)

Date of measurement: 18/7/2016

Measurement duration: 11 minutes 8 seconds

A. Experimental conditions.

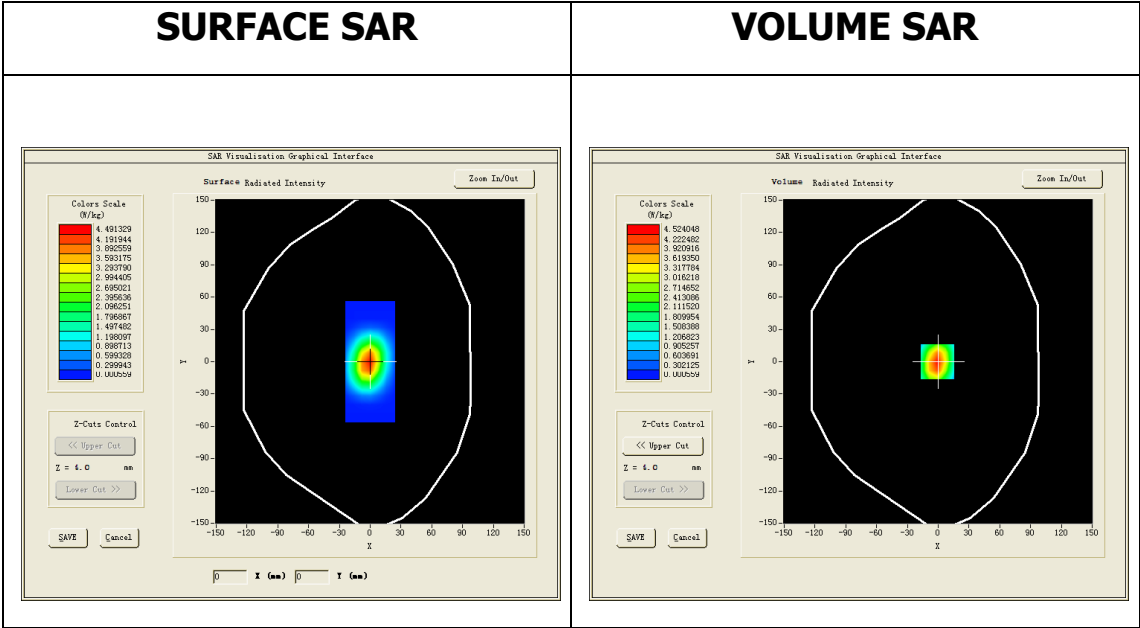
<u>Area Scan</u>	<u>dx=8mm dy=8mm</u>
<u>ZoomScan</u>	<u>5x5x7,dx=8mm dy=8mm</u> <u>dz=5mm,Complete</u>
<u>Phantom</u>	<u>Validation plane</u>
<u>Device Position</u>	<u>Dipole</u>
<u>Band</u>	<u>CW1900</u>
<u>Channels</u>	<u>Middle</u>
<u>Signal</u>	<u>CW (Crest factor: 1.0)</u>
<u>Conversion factor</u>	<u>4.78</u>

B. SAR Measurement Results

Middle Band SAR (Channel -1):

Frequency (MHz)	1900.000000
Relative permittivity (real part)	53.147202
Relative permittivity (imaginary part)	14.472600
Conductivity (S/m)	1.527663

Variation (%)	-0.160000
----------------------	-----------

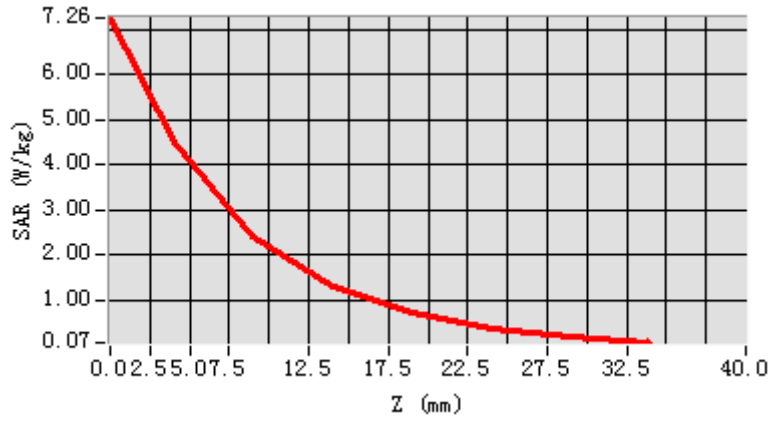


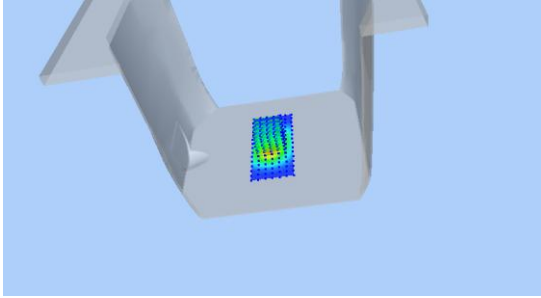
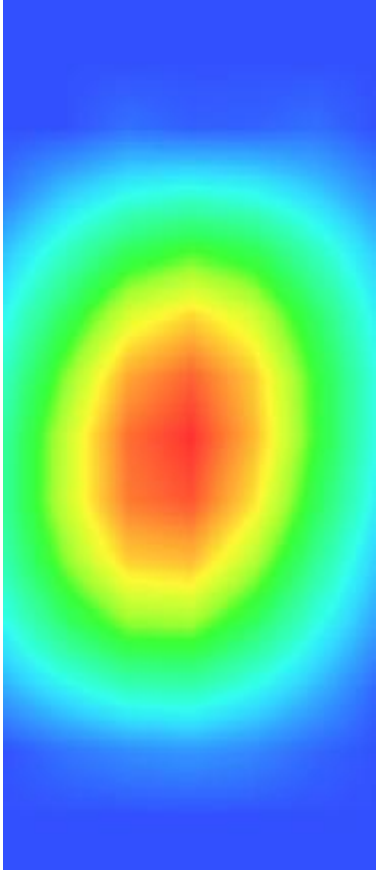
Maximum location: X=-1.00, Y=0.00

SAR Peak: 7.23 W/kg

SAR 10g (W/Kg)	21.44791
SAR 1g (W/Kg)	42.78533

Z (mm)	0.00	4.00	9.00	14.00	19.00	24.00	29.00
SAR (W/Kg)	7.2625	4.5240	2.4193	1.3215	0.7144	0.3718	0.1784



3D screen shot	Hot spot position
	

MEASUREMENT 4

HEAD

Type: Validation measurement (Complete)

Date of measurement: 18/7/2016

Measurement duration: 13 minutes 45 seconds

A. Experimental conditions.

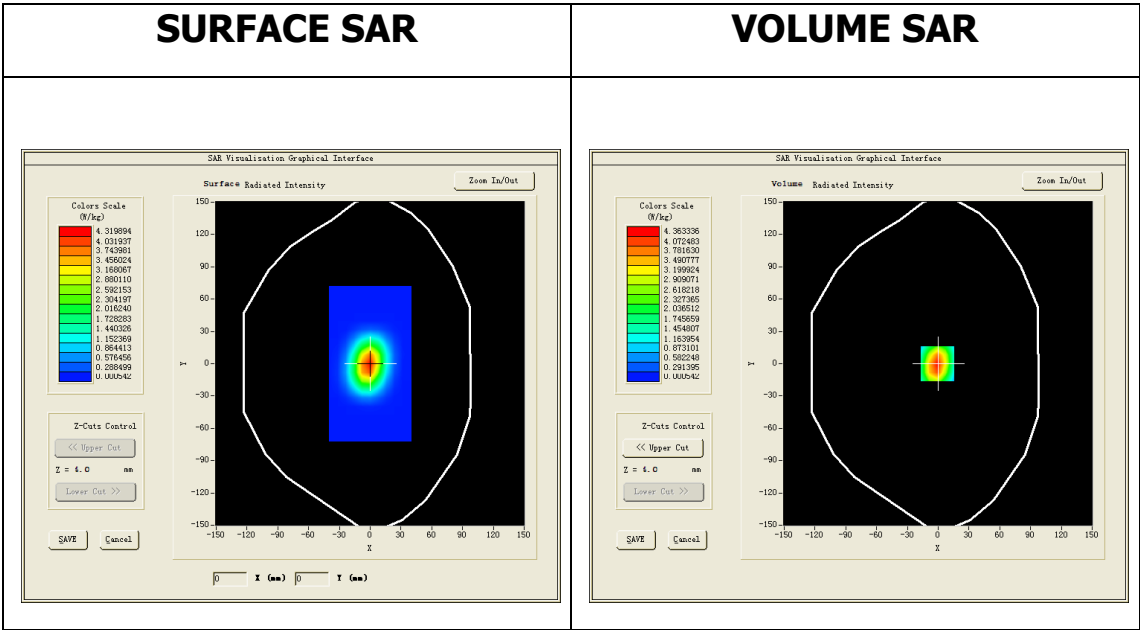
<u>Area Scan</u>	<u>dx=8mm dy=8mm</u>
<u>ZoomScan</u>	<u>5x5x7, dx=8mm dy=8mm</u> <u>dz=5mm, Complete</u>
<u>Phantom</u>	<u>Validation plane</u>
<u>Device Position</u>	<u>Dipole</u>
<u>Band</u>	<u>CW1900</u>
<u>Channels</u>	<u>Middle</u>
<u>Signal</u>	<u>CW (Crest factor: 1.0)</u>
<u>Conversion factor</u>	<u>4.78</u>

B. SAR Measurement Results

Middle Band SAR (Channel -1):

Frequency (MHz)	1900.000000
Relative permittivity (real part)	53.157902
Relative permittivity (imaginary part)	14.322700
Conductivity (S/m)	1.511841

Variation (%)	0.330000
----------------------	----------

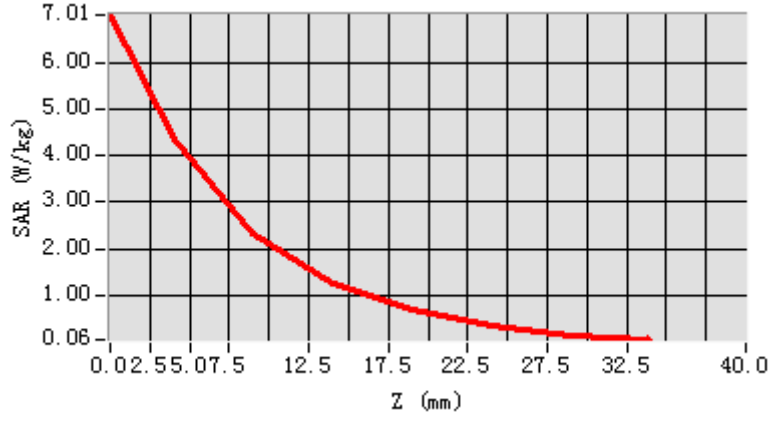


Maximum location: X=-1.00, Y=0.00

SAR Peak: 6.98 W/kg

SAR 10g (W/Kg)	20.62172
SAR 1g (W/Kg)	41.14412

Z (mm)	0.00	4.00	9.00	14.00	19.00	24.00	29.00
SAR (W/Kg)	7.0084	4.3633	2.3305	1.2711	0.6827	0.3505	0.1629



3D screen shot	Hot spot position
