



SATIMO 225, rue Pierre Rivoalon 29200 Brest - France  
Tel:+33 (0)2 98 05 13 34; Fax: +33 (0)2 98 05 53 87; www.satimo.com



## **Annex B: Measurement Results**

**Tested Model : T16RA**

**Report Number:**

**WSCT-A2LA-R&E240300011A-SAR**

# MEASUREMENT 1

Rear-side-middle

Type: Phone measurement (Complete)

Date of measurement:15/4/2024

Measurement duration: 11 minutes 11 seconds

## **A. Experimental conditions.**

<b><u>Area Scan</u></b>	<u>dx=15mm dy=15mm</u>
<b><u>ZoomScan</u></b>	<u>7x7x7,dx=5mm dy=5mm</u> <u>dz=5mm,Complete</u>
<b><u>Phantom</u></b>	<u>Validation plane</u>
<b><u>Device Position</u></b>	<u>Body</u>
<b><u>Band</u></b>	<u>IEEE 802.11b ISM</u>
<b><u>Channels</u></b>	<u>Middle</u>
<b><u>Signal</u></b>	<u>IEEE802.b (Crest factor: 1.0)</u>

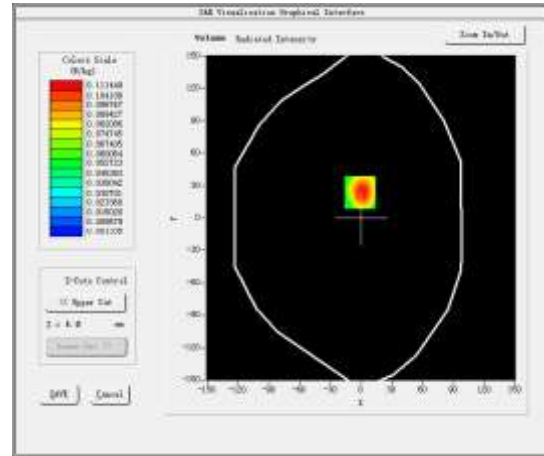
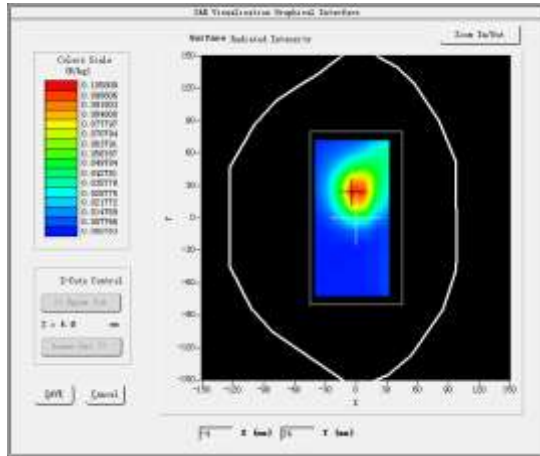
## **B. SAR Measurement Results**

Middle Band SAR (Channel 6):

<b>Frequency (MHz)</b>	2437.000000
<b>Relative permittivity (real part)</b>	52.756401
<b>Relative permittivity (imaginary part)</b>	14.076200
<b>Conductivity (S/m)</b>	1.909671
<b>Variation (%)</b>	0.740000

**SURFACE SAR**

**VOLUME SAR**

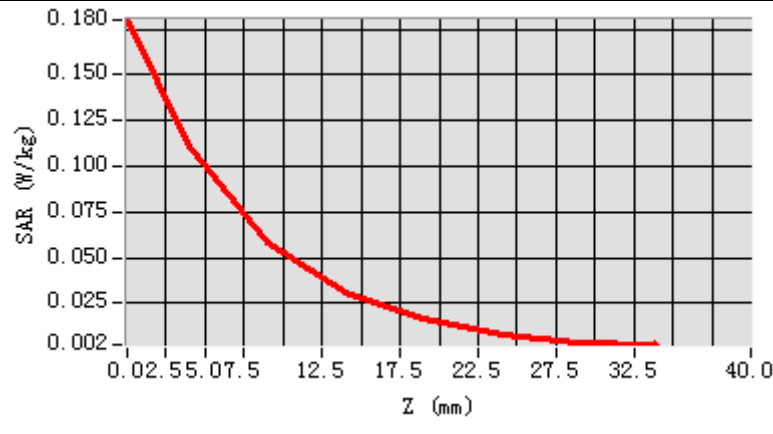


**Maximum location: X=-1.00, Y=24.00**

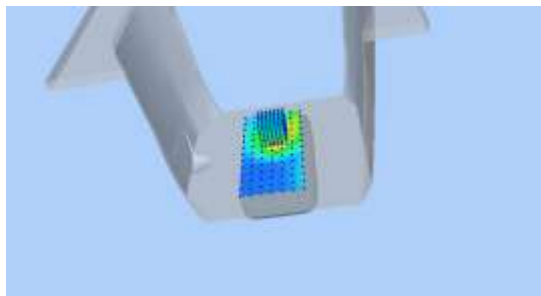
**SAR Peak: 0.16 W/kg**

<b>SAR 10g (W/Kg)</b>	0.097154
<b>SAR 1g (W/Kg)</b>	0.186830

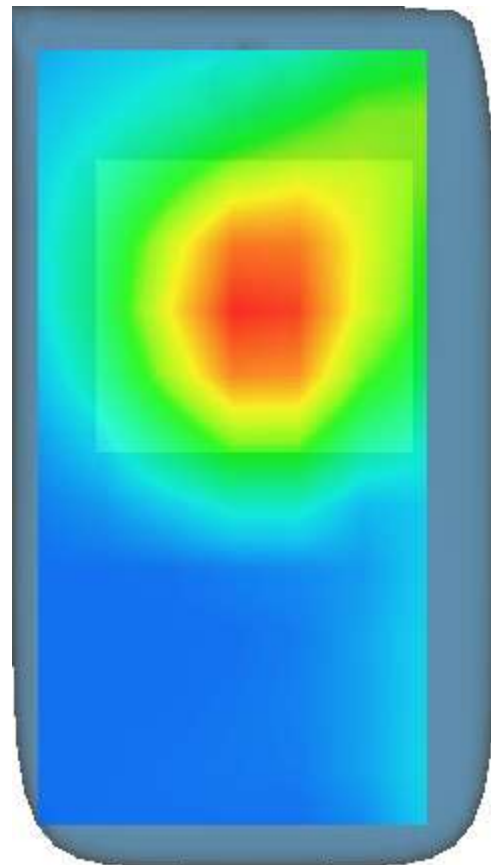
Z (mm)	0.00	4.00	9.00	14.00	19.00	24.00	29.00
SAR (W/Kg)	0.1801	0.1114	0.0587	0.0309	0.0161	0.0083	0.0040



**3D screen shot**



**Hot spot position**



## MEASUREMENT 2

Rear-side-middle

Type: Phone measurement (Complete)

Date of measurement: 15/4/2024

Measurement duration: 10 minutes 44 seconds

### **A. Experimental conditions.**

<b><u>Area Scan</u></b>	<u>dx=10mm dy=10mm</u>
<b><u>ZoomScan</u></b>	<u>7x7x12,dx=4mm dy=4mm dz=2mm,Complete</u>
<b><u>Phantom</u></b>	<u>Validation plane</u>
<b><u>Device Position</u></b>	<u>Body</u>
<b><u>Band</u></b>	<u>IEEE 802.11a U-NII-1</u>
<b><u>Channels</u></b>	<u>Middle</u>
<b><u>Signal</u></b>	<u>Duty cycle:1:1</u>

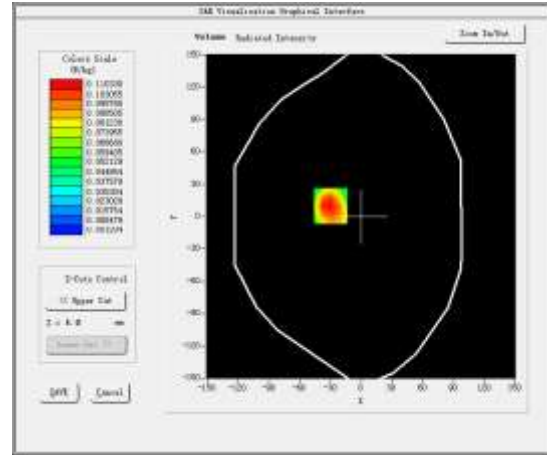
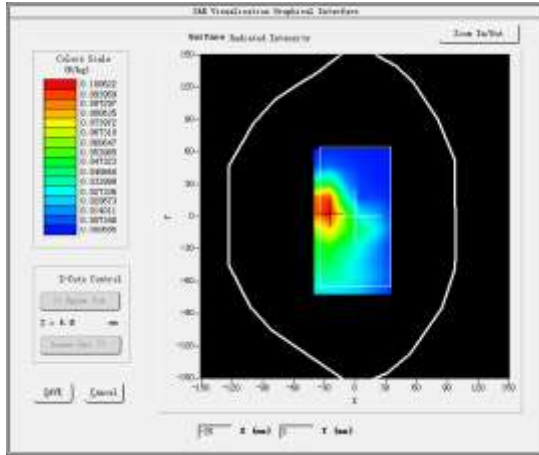
### **B. SAR Measurement Results**

Lower Band SAR (Channel 46):

<b>Frequency (MHz)</b>	5230.000000
<b>Relative permittivity (real part)</b>	49.858526
<b>Relative permittivity (imaginary part)</b>	17.828438
<b>Conductivity (S/m)</b>	5.194532
<b>Variation (%)</b>	1.070000

**SURFACE SAR**

**VOLUME SAR**

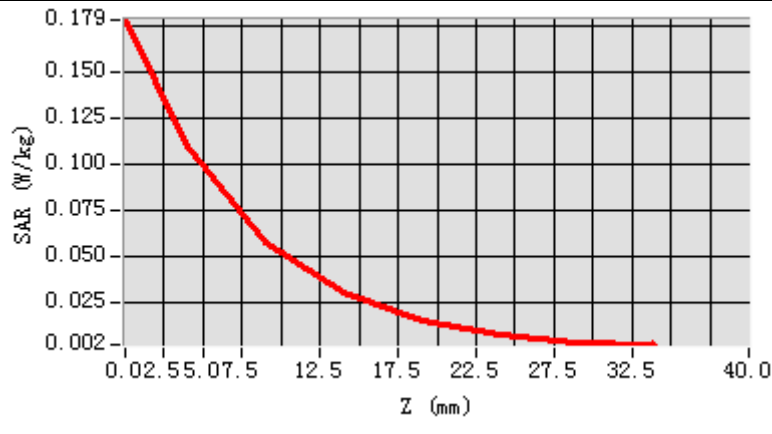


**Maximum location: X=-30.00, Y=10.00**

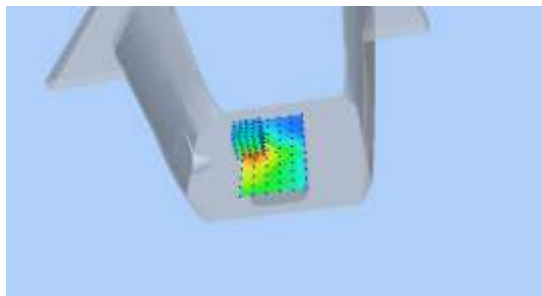
**SAR Peak: 0.19 W/kg**

<b>SAR 10g (W/Kg)</b>	0.082510
<b>SAR 1g (W/Kg)</b>	0.149866

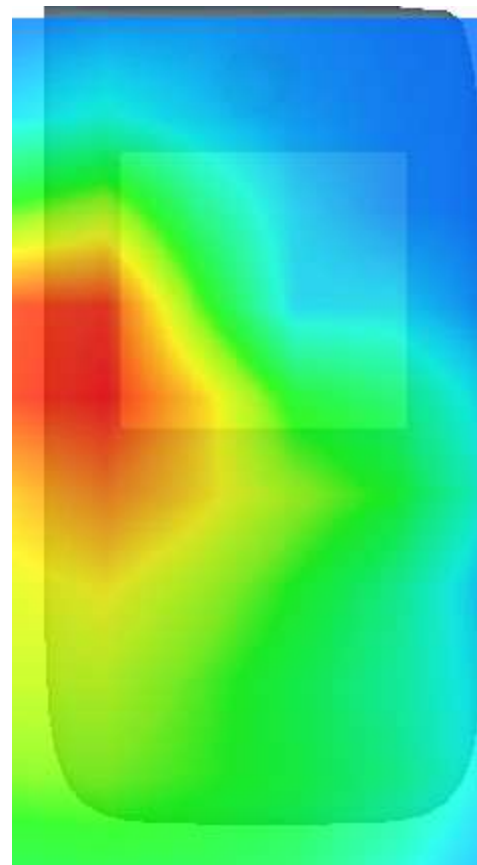
Z (mm)	0.00	4.00	9.00	14.00	19.00	24.00	29.00
SAR (W/Kg)	0.1788	0.1103	0.0576	0.0303	0.0156	0.0075	0.0040



**3D screen shot**



**Hot spot position**



## MEASUREMENT 3

Rear-side-middle

Type: Phone measurement (Complete)

Date of measurement: 15/4/2024

Measurement duration: 16 minutes 21 seconds

### **A. Experimental conditions.**

<b><u>Area Scan</u></b>	<u>dx=10mm dy=10mm</u>
<b><u>ZoomScan</u></b>	<u>7x7x12,dx=4mm dy=4mm</u> <u>dz=2mm,Complete</u>
<b><u>Phantom</u></b>	<u>Validation plane</u>
<b><u>Device Position</u></b>	<u>Body</u>
<b><u>Band</u></b>	<u>IEEE 802.11a U-NII-2a</u>
<b><u>Channels</u></b>	<u>Middle</u>
<b><u>Signal</u></b>	<u>Duty cycle:1:1</u>

### **B. SAR Measurement Results**

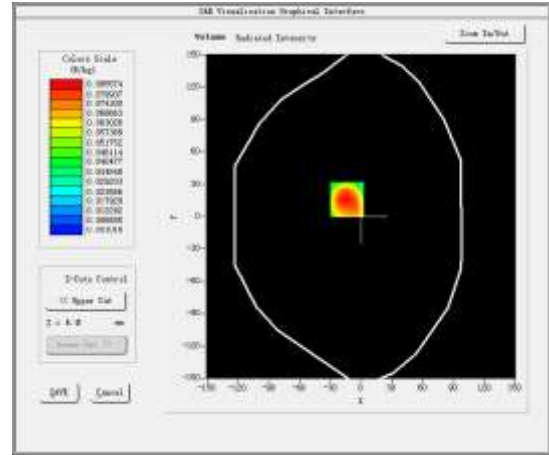
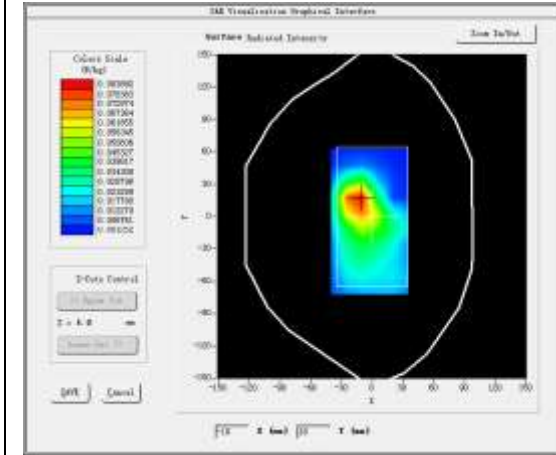
Middleer Band SAR (Channel 54):

<b>Frequency (MHz)</b>	5270.000000
<b>Relative permittivity (real part)</b>	48.139400
<b>Relative permittivity (imaginary part)</b>	19.154900
<b>Conductivity (S/m)</b>	6.205808
<b>Variation (%)</b>	0.020000



### SURFACE SAR

### VOLUME SAR

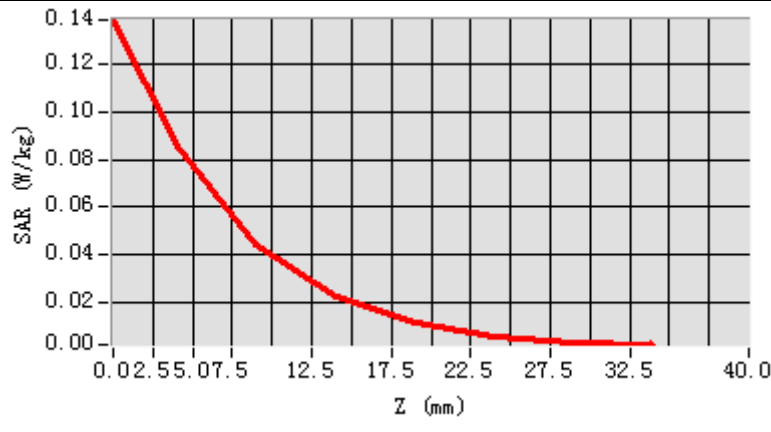


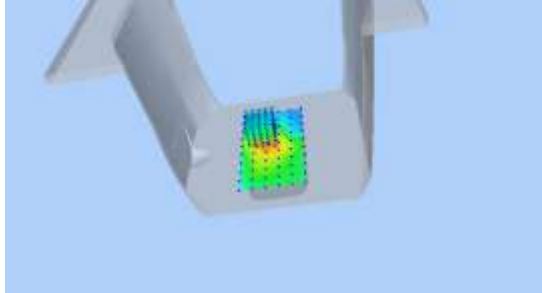
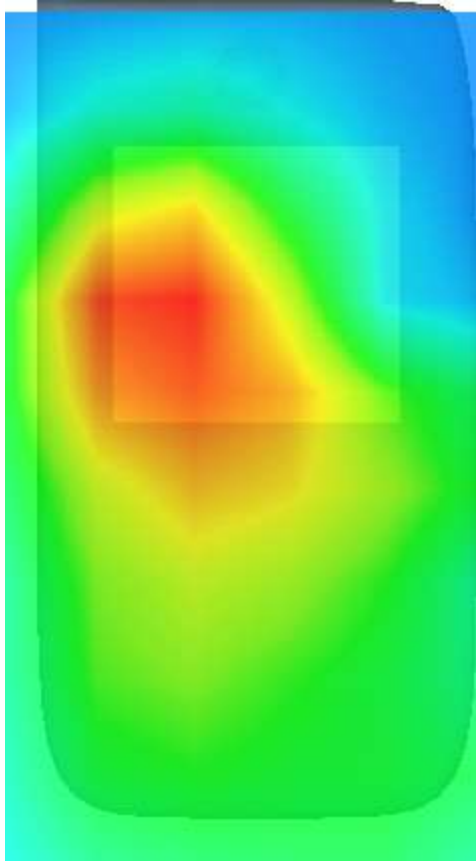
**Maximum location: X=-14.00, Y=16.00**

**SAR Peak: 0.15 W/kg**

<b>SAR 10g (W/Kg)</b>	0.078450
<b>SAR 1g (W/Kg)</b>	0.141125

Z (mm)	0.00	4.00	9.00	14.00	19.00	24.00	29.00
SAR (W/Kg)	0.1388	0.0856	0.0441	0.0224	0.0109	0.0049	0.0027



3D screen shot	Hot spot position
	

## MEASUREMENT 4

Rear-side-middle

Type: Phone measurement (Complete)

Date of measurement: 15/4/2024

Measurement duration: 8 minutes 31 seconds

### **A. Experimental conditions.**

<b><u>Area Scan</u></b>	<u>dx=10mm dy=10mm</u>
<b><u>ZoomScan</u></b>	<u>7x7x12,dx=4mm dy=4mm dz=2mm,Complete</u>
<b><u>Phantom</u></b>	<u>Validation plane</u>
<b><u>Device Position</u></b>	<u>Body</u>
<b><u>Band</u></b>	<u>IEEE 802.11a U-NII-2c</u>
<b><u>Channels</u></b>	<u>Middle</u>
<b><u>Signal</u></b>	<u>Duty cycle:1:1</u>

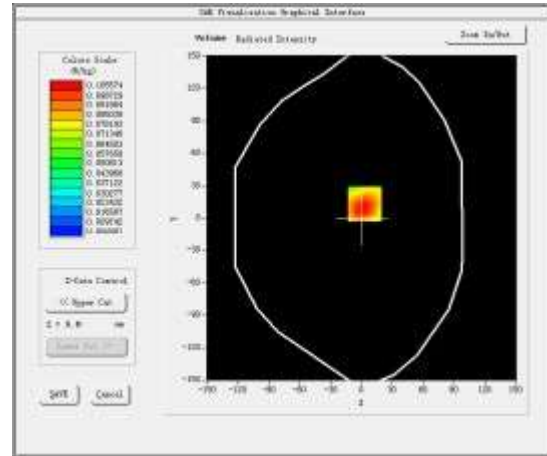
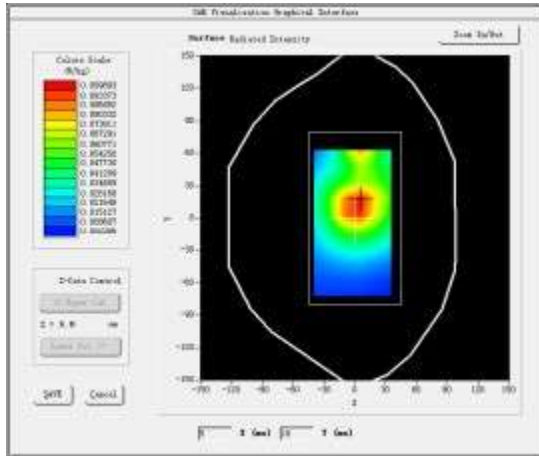
### **B. SAR Measurement Results**

Middleer Band SAR (Channel 122):

<b>Frequency (MHz)</b>	5610.000000
<b>Relative permittivity (real part)</b>	48.235748
<b>Relative permittivity (imaginary part)</b>	19.060800
<b>Conductivity (S/m)</b>	6.173560
<b>Variation (%)</b>	-3.510000

**SURFACE SAR**

**VOLUME SAR**

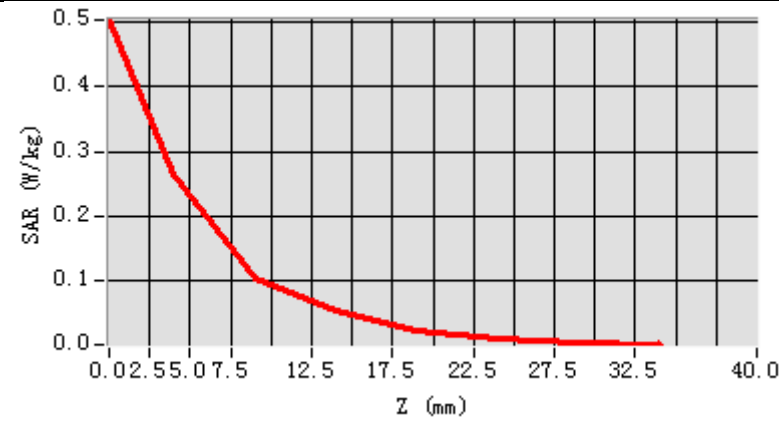


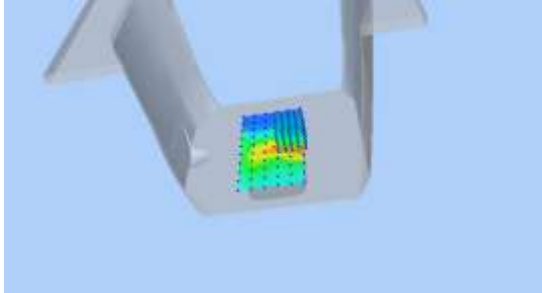
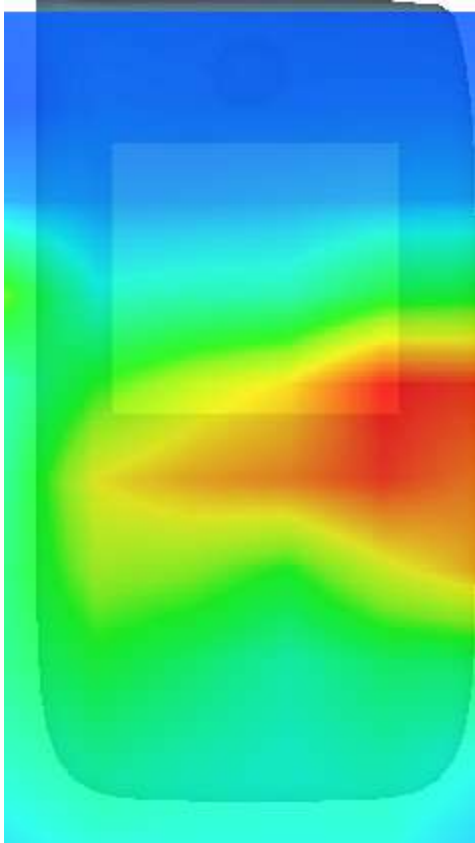
**Maximum location: X=3.00, Y=13.00**

**SAR Peak: 0.17 W/kg**

<b>SAR 10g (W/Kg)</b>	0.064581
<b>SAR 1g (W/Kg)</b>	0.135630

Z (mm)	0.00	4.00	9.00	14.00	19.00	24.00	29.00
SAR (W/Kg)	0.5035	0.2644	0.1036	0.0539	0.0226	0.0107	0.0050



3D screen shot	Hot spot position
	

## MEASUREMENT 5

Rear-side-middle

Type: Phone measurement (Complete)

Date of measurement: 15/4/2024

Measurement duration: 8 minutes 31 seconds

### **A. Experimental conditions.**

<b><u>Area Scan</u></b>	<u>dx=10mm dy=10mm</u>
<b><u>ZoomScan</u></b>	<u>7x7x12,dx=4mm dy=4mm</u> <u>dz=2mm,Complete</u>
<b><u>Phantom</u></b>	<u>Validation plane</u>
<b><u>Device Position</u></b>	<u>Body</u>
<b><u>Band</u></b>	<u>IEEE 802.11a U-NII-3</u>
<b><u>Channels</u></b>	<u>Middle</u>
<b><u>Signal</u></b>	<u>Duty cycle:1:1</u>

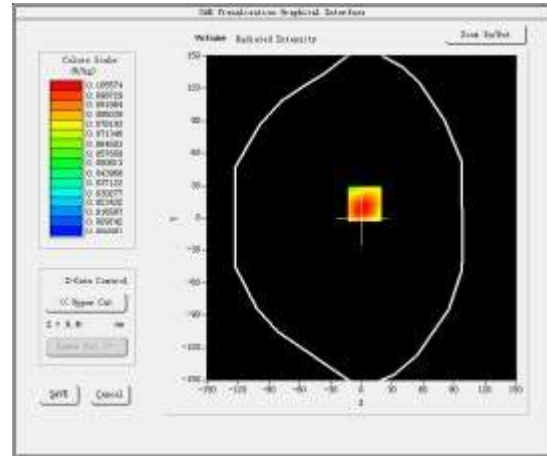
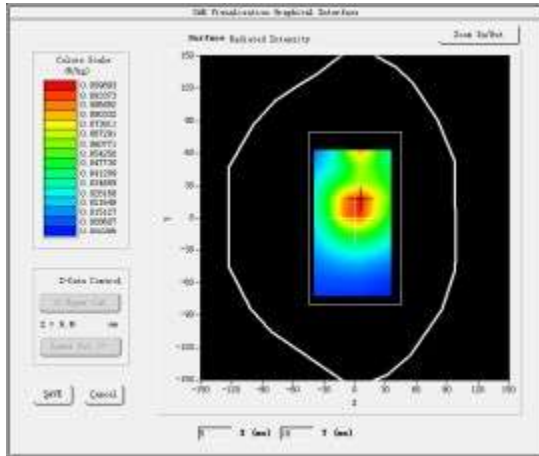
### **B. SAR Measurement Results**

Middleer Band SAR (Channel 149):

<b>Frequency (MHz)</b>	5745.000000
<b>Relative permittivity (real part)</b>	48.235748
<b>Relative permittivity (imaginary part)</b>	19.060800
<b>Conductivity (S/m)</b>	6.173560
<b>Variation (%)</b>	-3.370000

**SURFACE SAR**

**VOLUME SAR**

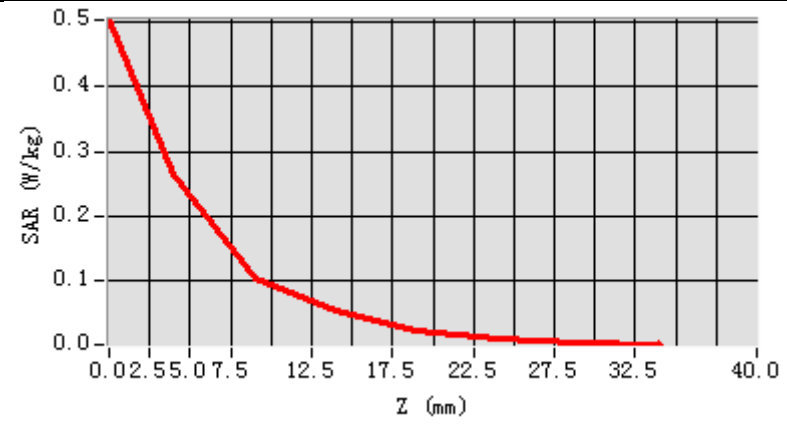


**Maximum location: X=3.00, Y=13.00**

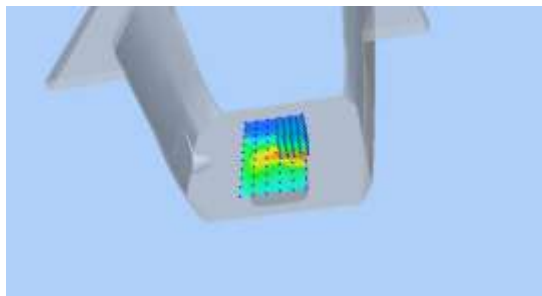
**SAR Peak: 0.17 W/kg**

<b>SAR 10g (W/Kg)</b>	0.055142
<b>SAR 1g (W/Kg)</b>	0.11524

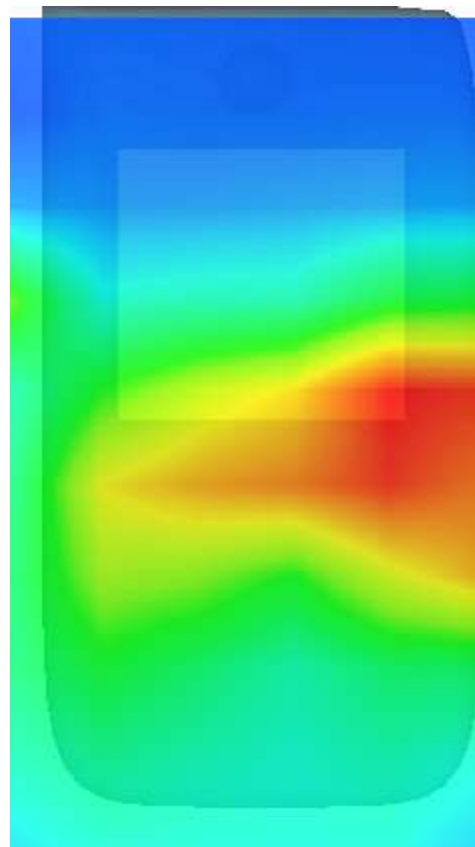
Z (mm)	0.00	4.00	9.00	14.00	19.00	24.00	29.00
SAR (W/Kg)	0.5035	0.2644	0.1036	0.0539	0.0226	0.0107	0.0050



**3D screen shot**



**Hot spot position**





## MEASUREMENT 6

Type: Phone measurement (Complete)

Date of measurement: 15/4/2024

Measurement duration: 11 minutes 11 seconds

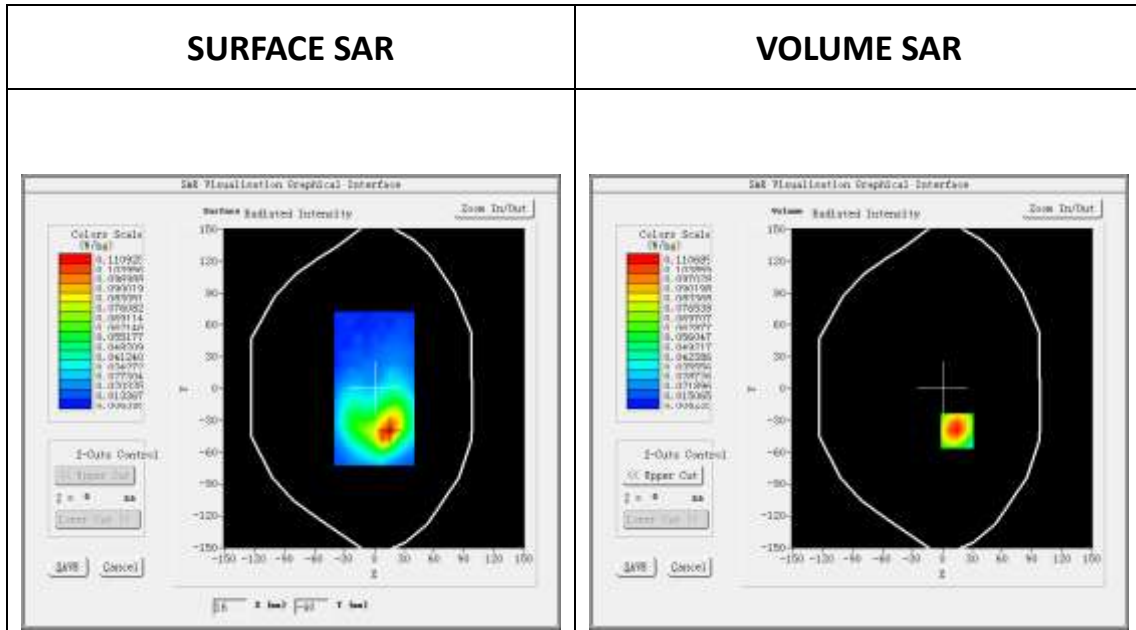
### A. Experimental conditions.

<b><u>Area Scan</u></b>	<u>dx=15mm dy=15mm</u>
<b><u>ZoomScan</u></b>	<u>7x7x7,dx=5mm dy=5mm dz=5mm,Complete</u>
<b><u>Phantom</u></b>	<u>Validation plane</u>
<b><u>Device Position</u></b>	<u>Body</u>
<b><u>Band</u></b>	<u>Bluetooth</u>
<b><u>Channels</u></b>	<u>High</u>
<b><u>Signal</u></b>	<u>Bluetooth (Crest factor: 1.0)</u>

### B. SAR Measurement Results

Middle Band SAR (Channel 78):

<b>Frequency (MHz)</b>	2480.000000
<b>Relative permittivity (real part)</b>	39.160000
<b>Relative permittivity (imaginary part)</b>	13.290000
<b>Conductivity (S/m)</b>	1.831067
<b>Variation (%)</b>	0.210000

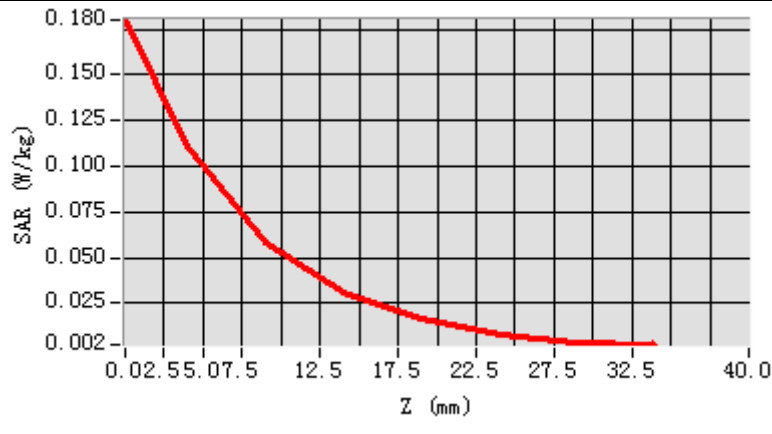


**Maximum location: X=15.00, Y=-40.00**

**SAR Peak: 0.18 W/kg**

<b>SAR 10g (W/Kg)</b>	0.037584
<b>SAR 1g (W/Kg)</b>	0.075344

Z (mm)	0.00	4.00	9.00	14.00	19.00	24.00	29.00
SAR (W/Kg)	0.1801	0.1114	0.0587	0.0309	0.0161	0.0083	0.0040



3D screen shot	Hot spot position
