



中认信通

CHINA CERTIFICATION ICT CO., LTD (DONGGUAN)



SAR TEST REPORT

Applicant: TECNO MOBILE LIMITED

Address: FLAT N 16/F BLOCK B UNIVERSAL INDUSTRIAL CENTRE 19-25
SHAN MEI STREET FOTAN NT HONGKONG

FCC ID: 2ADYY-T1001

Product Name: Tablet

Standard(s): 47 CFR Part 2(2.1093)

The above device has been tested and found compliant with the requirement of the relative standards by China Certification ICT Co., Ltd (Dongguan)

Report Number: 2403U81179E-20

Date Of Issue: 2024/08/09

Reviewed By: Ken Zong

Ken Zong

Title: SAR Engineer

Approved By: Karl Gong

Karl Gong

Title: SAR Engineer

Test Laboratory: China Certification ICT Co., Ltd (Dongguan)

No. 113, Pingkang Road, Dalang Town, Dongguan, Guangdong, China
Tel: +86-769-82016888

SAR TEST RESULTS SUMMARY

| Operation Frequency Bands | Highest Reported 1g SAR (W/kg) | Limits (W/kg) |
|--|--------------------------------|---------------|
| | Body-Supported | |
| GSM 850 | 0.59 | 1.6 |
| PCS 1900 | 0.77 | |
| WCDMA Band 5 | 0.78 | |
| LTE Band 5 | 0.78 | |
| LTE Band 7 | 1.19 | |
| LTE Band 41&38 | 0.68 | |
| Wi-Fi 2.4 | 0.47 | |
| Maximum Simultaneous Transmission SAR | | |
| Items | Body-Supported | Limits |
| Sum SAR(W/kg) | 1.32 | 1.6 |
| SPLSR | N/A | 0.04 |
| EUT Received Date: | 2024/06/14 | |
| Tested Date: | 2024/06/16 ~ 2023/06/17 | |
| Tested Result: | Pass | |

Test Facility

The Test site used by China Certification ICT Co., Ltd (Dongguan) to collect test data is located on the No. 113, Pingkang Road, Dalang Town, Dongguan, Guangdong, China.

The lab has been recognized as the FCC accredited lab under the KDB 974614 D01 and is listed in the FCC Public Access Link (PAL) database, FCC Registration No. : 442868, the FCC Designation No. : CN1314.

The lab has been recognized by Innovation, Science and Economic Development Canada to test to Canadian radio equipment requirements, the CAB identifier: CN0123.

Declarations

China Certification ICT Co., Ltd (Dongguan) is not responsible for the authenticity of any test data provided by the applicant. Data included from the applicant that may affect test results are marked with a triangle symbol “▲”. Customer model name, addresses, names, trademarks etc. are not considered data.

Unless otherwise stated the results shown in this test report refer only to the sample(s) tested.

This report cannot be reproduced except in full, without prior written approval of the Company.

This report is valid only with a valid digital signature. The digital signature may be available only under the Adobe software above version 7.0.

This report may contain data that are not covered by the accreditation scope and shall be marked with an asterisk “★”.

CONTENTS

| | |
|--|-----------|
| SAR TEST RESULTS SUMMARY | 2 |
| TEST FACILITY | 3 |
| DECLARATIONS..... | 3 |
| DOCUMENT REVISION HISTORY | 6 |
| 1. GENERAL INFORMATION | 7 |
| 1.1 PRODUCT DESCRIPTION FOR EQUIPMENT UNDER TEST (EUT) | 7 |
| 1.2 TEST SPECIFICATION, METHODS AND PROCEDURES | 8 |
| 1.3 SAR LIMITS | 9 |
| 2. SAR MEASUREMENT SYSTEM | 10 |
| 3. EQUIPMENT LIST AND CALIBRATION | 17 |
| 3.1 EQUIPMENTS LIST & CALIBRATION INFORMATION | 17 |
| 4. SAR MEASUREMENT SYSTEM VERIFICATION | 18 |
| 4.1 LIQUID VERIFICATION | 18 |
| 4.2 SYSTEM ACCURACY VERIFICATION | 20 |
| 4.3 SAR SYSTEM VALIDATION DATA..... | 21 |
| 5. EUT TEST STRATEGY AND METHODOLOGY | 25 |
| 5.1 TEST POSITIONS FOR BODY-WORN AND OTHER CONFIGURATIONS | 25 |
| 5.2 TEST DISTANCE FOR SAR EVALUATION..... | 25 |
| 5.3 SAR EVALUATION PROCEDURE | 26 |
| 6. CONDUCTED OUTPUT POWER MEASUREMENT | 27 |
| 6.1 TEST PROCEDURE | 27 |
| 6.2 DESCRIPTION OF TEST CONFIGURATION..... | 28 |
| 6.3 MAXIMUM TARGET OUTPUT POWER..... | 37 |
| 6.4 TEST RESULTS: | 40 |
| 7. Standalone SAR test exclusion considerations | 67 |
| 7.1 ANTENNA DISTANCE TO EDGE | 67 |
| 7.2 STANDALONE SAR TEST EXCLUSION CONSIDERATIONS | 67 |
| 7.3 STANDALONE SAR ESTIMATION: | 68 |
| 7.4 STANDALONE SAR TEST EXCLUSION CONSIDERATIONS:..... | 69 |
| 7.5 SAR TEST EXCLUSION FOR THE EUT EDGE CONSIDERATIONS RESULT | 69 |
| 8. SAR MEASUREMENT RESULTS | 71 |

8.1 SAR TEST DATA 71

9. Measurement Variability 80

10. SAR SIMULTANEOUS TRANSMISSION DESCRIPTION 81

11. SAR Plots 82

APPENDIX A MEASUREMENT UNCERTAINTY 83

APPENDIX B EUT TEST POSITION PHOTOS 85

APPENDIX C CALIBRATION CERTIFICATES 86

DOCUMENT REVISION HISTORY

| Revision Number | Report Number | Description of Revision | Date of Revision |
|-----------------|----------------|-------------------------|------------------|
| 1.0 | 2403U81179E-20 | Original Report | 2024/08/09 |

1. GENERAL INFORMATION

1.1 Product Description for Equipment under Test (EUT)

| | |
|-------------------------------|---|
| EUT Name: | Tablet |
| EUT Model: | T1001 |
| Device Type: | Portable |
| Exposure Category: | Population / Uncontrolled |
| Antenna Type(s): | Internal Antenna |
| Body-Worn Accessories: | None |
| Operation modes: | GSM Voice, GPRS/EDGE Data, WCDMA(R99 (Voice+Data), HSDPA/HSUPA/DC-HSDPA/HSPA+), FDD-LTE, TDD-LTE, WLAN and Bluetooth |
| Frequency Band: | GSM 850: 824-849 MHz(TX); 869-894 MHz(RX) PCS 1900: 1850-1910 MHz(TX); 1930-1990 MHz(RX) WCDMA Band 5: 824-849 MHz(TX); 869-894 MHz(RX) LTE Band 5: 824-849 MHz(TX); 869-894 MHz(RX) LTE Band 7: 2500-2570 MHz(TX); 2620-2690 MHz(RX) LTE Band 38: 2570-2620 MHz(TX/RX) LTE Band 41: 2535-2655 MHz(TX/RX) WLAN 2.4G : 2412 MHz-2462 MHz/2422-2452 MHz WLAN 5.2G : 5150 MHz-5250 MHz WLAN 5.3G : 5250 MHz-5350 MHz WLAN 5.6G : 5470 MHz-5725 MHz WLAN 5.8G : 5725 MHz-5850 MHz Bluetooth : 2402 MHz-2480 MHz |
| Conducted RF Power: | GSM 850: 32.82 dBm PCS 1900: 30.33 dBm WCDMA Band 5: 23.32 dBm LTE Band 5: 24.35 dBm LTE Band 7: 23.36 dBm LTE Band 38: 22.98 dBm LTE Band 41: 23.42 dBm WLAN 2.4G: 11.22 dBm WLAN 5.2G: 7.13 dBm WLAN 5.3G: 7.38 dBm WLAN 5.6G: 7.10 dBm WLAN 5.8G: 6.94 dBm Bluetooth(BDR/EDR): 4.17 dBm BLE: 2.69 dBm |
| Dimensions (L*W*H): | 240.74 mm (L) * 159.5 mm (W) * 7 mm (H) |
| Rated Input Voltage: | DC 3.85 V from Rechargeable Battery |
| Serial Number: | 2N10-1 |
| Normal Operation: | Body Supported |

1.2 Test Specification, Methods and Procedures

The tests documented in this report were performed in accordance with FCC 47 CFR § 2.1093, IEEE 1528-2013, the following FCC Published RF exposure KDB procedures:

KDB 447498 D01 General RF Exposure Guidance v06
KDB 865664 D01 SAR Measurement 100 MHz to 6 GHz v01r04
KDB 865664 D02 RF Exposure Reporting v01r02
KDB 941225 D01 3G SAR Procedures v03r01
KDB 941225 D05 SAR for LTE Devices v02r05
KDB 616217 D04 SAR for laptop and tablets v01r02
KDB 248227 D01 802.11 Wi-Fi SAR v02r02

TCB Workshop April 2019: RF Exposure Procedures

1.3 SAR Limits**FCC Limit**

| EXPOSURE LIMITS | SAR (W/kg) | |
|--|--|--|
| | (General Population / Uncontrolled Exposure Environment) | (Occupational / Controlled Exposure Environment) |
| Spatial Average (averaged over the whole body) | 0.08 | 0.4 |
| Spatial Peak (averaged over any 1 g of tissue) | 1.60 | 8.0 |
| Spatial Peak (hands/wrists/feet/ankles averaged over 10 g) | 4.0 | 20.0 |

Population/Uncontrolled Environments are defined as locations where there is the exposure of individual who have no knowledge or control of their exposure.

Occupational/Controlled Environments are defined as locations where there is exposure that may be incurred by people who are aware of the potential for exposure (i.e. as a result of employment or occupation).

General Population/Uncontrolled environments Spatial Peak limit 1.6W/kg for 1g SAR applied to the EUT.

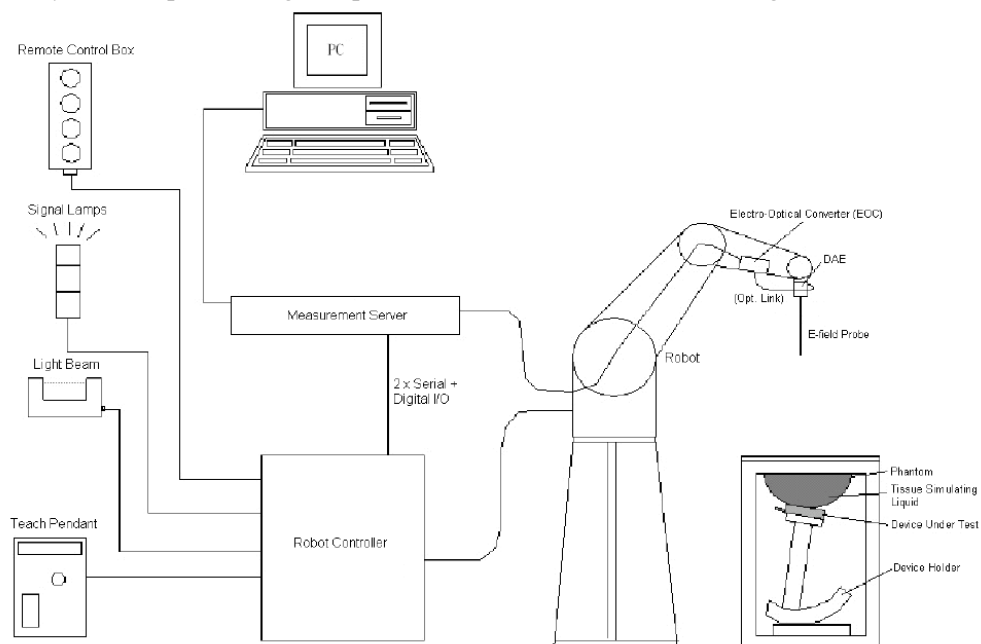
2. SAR MEASUREMENT SYSTEM

These measurements were performed with the automated near-field scanning system DASY5 from Schmid & Partner Engineering AG (SPEAG) which is the Fifth generation of the system shown in the figure hereinafter:



DASY5 System Description

The DASY5 system for performing compliance tests consists of the following items:



- A standard high precision 6-axis robot with controller, teach pendant and software. An arm extension for accommodating the data acquisition electronics (DAE).
- An isotropic field probe optimized and calibrated for the targeted measurement.
- A data acquisition electronics (DAE) which performs the signal application, signal multiplexing, AD-conversion, offset measurements, mechanical surface detection, collision detection, etc. The unit is battery powered with standard or rechargeable batteries. The signal is optically transmitted to the EOC.
- The Electro-optical converter (EOC) performs the conversion from optical to electrical signals for the digital communication to the DAE. To use optical surface detection, a special version of the EOC is required. The EOC signal is transmitted to the measurement server.
- The function of the measurement server is to perform the time critical tasks such as signal filtering, control of the robot operation and fast movement interrupts.
- The Light Beam used is for probe alignment. This improves the (absolute) accuracy of the probe positioning.
- A computer running Win7 professional operating system and the DASY52 software.
- Remote control and teach pendant as well as additional circuitry for robot safety such as warning lamps, etc.
- The phantom, the device holder and other accessories according to the targeted measurement.

DASY5 Measurement Server

The DASY5 measurement server is based on a PC/104 CPU board with a 400MHz Intel ULV Celeron, 128MB chip-disk and 128MB RAM. The necessary circuits for communication with the DAE4 (or DAE3) electronics box, as well as the 16 bit AD-converter system for optical detection and digital I/O interface are contained on the DASY5 I/O board, which is directly connected to the PC/104 bus of the CPU board.



The measurement server performs all real-time data evaluation of field measurements and surface detection, controls robot movements and handles safety operation. The PC operating system cannot interfere with these time critical processes. All connections are supervised by a watchdog, and disconnection of any of the cables to the measurement server will automatically disarm the robot and disable all program-controlled robot movements. Furthermore, the measurement server is equipped with an expansion port which is reserved for future applications. Please note that this expansion port does not have a standardized point out, and therefore only devices provided by SPEAG can be connected. Devices from any other supplier could seriously damage the measurement server.

Data Acquisition Electronics

The data acquisition electronics (DAE4) consist of a highly sensitive electrometer-grade preamplifier with auto-zeroing, a channel and gain-switching multiplexer, a fast 16 bit AD-converter and a command decoder with a control logic unit. Transmission to the measurement server is accomplished through an optical downlink for data and status information, as well as an optical uplink for commands and the clock.

The mechanical probe mounting device includes two different sensor systems for frontal and sideways probe contacts. They are used for mechanical surface detection and probe collision detection.

The input impedance of both the DAE4 as well as of the DAE3 box is 200M Ω ; the inputs are symmetrical and floating. Common mode rejection is above 80 dB.

EX3DV4 E-Field Probes

| | |
|----------------------|---|
| Frequency | 10 MHz to > 6 GHz Linearity: ± 0.2 dB (30 MHz to 6 GHz) |
| Directivity | ± 0.3 dB in TSL (rotation around probe axis) ± 0.5 dB in TSL (rotation normal to probe axis) |
| Dynamic Range | 10 μ W/g to > 100 mW/g Linearity: ± 0.2 dB (noise: typically < 1 μ W/g) |
| Dimensions | Overall length: 337 mm (Tip: 20 mm) Tip diameter: 2.5 mm (Body: 12 mm) Typical distance from probe tip to dipole centers: 1 mm |
| Application | High precision dosimetric measurements in any exposure scenario (e.g., very strong gradient fields); the only probe that enables compliance testing for frequencies up to 6 GHz with precision of better 30%. |
| Compatibility | DASY3, DASY4, DASY52 SAR and higher, EASY4/MRI |

Calibration Frequency Points for EX3DV4 E-Field Probes SN: 7329 Calibrated: 2024/3/27

| Calibration Frequency Point(MHz) | Frequency Range(MHz) | | Conversion Factor | | |
|----------------------------------|----------------------|------|-------------------|-------|------|
| | From | To | X | Y | Z |
| 750 Head | 650 | 810 | 8.79 | 10.07 | 9.05 |
| 900 Head | 810 | 1000 | 8.42 | 9.50 | 8.93 |
| 1750 Head | 1650 | 1810 | 7.56 | 8.56 | 7.71 |
| 1900 Head | 1810 | 2000 | 7.37 | 8.32 | 7.54 |
| 2300 Head | 2200 | 2399 | 7.21 | 8.13 | 7.41 |
| 2450 Head | 2399 | 2500 | 7.05 | 7.92 | 7.22 |
| 2600 Head | 2500 | 2700 | 6.91 | 7.77 | 7.08 |
| 5250 Head | 5140 | 5360 | 4.96 | 5.61 | 5.16 |
| 5600 Head | 5490 | 5675 | 4.38 | 4.98 | 4.56 |
| 5750 Head | 5675 | 5860 | 4.54 | 5.16 | 4.70 |

SAM Twin Phantom

The SAM twin phantom is a fiberglass shell phantom with 2mm shell thickness (except the ear region, where shell thickness increases to 6 mm). The phantom has three measurement areas:

- _ Left Head
- _ Right Head
- _ Flat phantom

The phantom table for the DASY systems based on the robots have the size of 100 x 50 x 85 cm (L x W x H). For easy dislocation these tables have fork lift cut outs at the bottom.

The bottom plate contains three pairs of bolts for locking the device holder. The device holder positions are adjusted to the standard measurement positions in the three sections. Only one device holder is necessary if two phantoms are used (e.g., for different liquids)



A white cover is provided to cover the phantom during off-periods to prevent water evaporation and changes in the liquid parameters. Free space scans of devices on top of this phantom cover are possible. Three reference marks are provided on the phantom counter. These reference marks are used to teach the absolute phantom position relative to the robot.

Robots

The DASY5 system uses the high precision industrial robot. The robot offers the same features important for our application:

- High precision (repeatability 0.02mm)
- High reliability (industrial design)
- Low maintenance costs (virtually maintenance free due to direct drive gears; no belt drives)
- Jerk-free straight movements (brushless synchrony motors; no stepper motors)
- Low ELF interference (motor control fields shielded via the closed metallic construction shields)

The above mentioned robots are controlled by the Staubli CS8c robot controllers. All information regarding the use and maintenance of the robot arm and the robot controller is contained on the CDs delivered along with the robot. Paper manuals are available upon request direct from Staubli.

SAR Scan Procedures

Step 1: Power Reference Measurement

The Power Reference Measurement and Power Drift Measurements are for monitoring the power drift of the device under test in the batch process. The minimum distance of probe sensors to surface determines the closest measurement point to phantom surface. The minimum distance of probe sensors to surface is 1.4 mm. This distance cannot be smaller than the distance of sensor calibration points to probe tip as defined in the probe properties.

Step 2: Area Scans

Area scans are defined prior to the measurement process being executed with a user defined variable spacing between each measurement point (integral) allowing low uncertainty measurements to be conducted. Scans defined for FCC applications utilize a 15mm 2 step integral, with 1.5mm interpolation used to locate the peak SAR area used for zoom scan assessments.

Where the system identifies multiple SAR peaks (which are within 25% of peak value) the system will provide the user with the option of assessing each peak location individually for zoom scan averaging.

Area Scan Parameters extracted from KDB 865664 D01 SAR Measurement 100 MHz to 6 GHz

| | ≤ 3 GHz | > 3 GHz |
|--|---|---|
| Maximum distance from closest measurement point (geometric center of probe sensors) to phantom surface | 5 mm ± 1 mm | $\frac{1}{2} \cdot \delta \cdot \ln(2)$ mm ± 0.5 mm |
| Maximum probe angle from probe axis to phantom surface normal at the measurement location | 30° ± 1° | 20° ± 1° |
| Maximum area scan spatial resolution: Δx_{Area} , Δy_{Area} | ≤ 2 GHz: ≤ 15 mm 2 – 3 GHz: ≤ 12 mm | 3 – 4 GHz: ≤ 12 mm 4 – 6 GHz: ≤ 10 mm |
| | When the x or y dimension of the test device, in the measurement plane orientation, is smaller than the above, the measurement resolution must be ≤ the corresponding x or y dimension of the test device with at least one measurement point on the test device. | |

Step 3: Zoom Scan (Cube Scan Averaging)

The averaging zoom scan volume utilized in the DASY5 software is in the shape of a cube and the side dimension of a 1 g or 10 g mass is dependent on the density of the liquid representing the simulated tissue. A density of 1000 kg/m³ is used to represent the head and body tissue density and not the phantom liquid density, in order to be consistent with the definition of the liquid dielectric properties, i.e. the side length of the 1g cube is 10mm, with the side length of the 10g cube is 21.5mm.

Zoom Scan Parameters extracted from KDB 865664 D01 SAR Measurement 100 MHz to 6 GHz

| | | | ≤ 3 GHz | > 3 GHz |
|--|------------------------------------|--|--|---|
| Maximum zoom scan spatial resolution: Δx_{Zoom} , Δy_{Zoom} | | | ≤ 2 GHz: ≤ 8 mm 2 – 3 GHz: ≤ 5 mm* | 3 – 4 GHz: ≤ 5 mm* 4 – 6 GHz: ≤ 4 mm* |
| Maximum zoom scan spatial resolution, normal to phantom surface | uniform grid: $\Delta z_{Zoom}(n)$ | | ≤ 5 mm | 3 – 4 GHz: ≤ 4 mm 4 – 5 GHz: ≤ 3 mm 5 – 6 GHz: ≤ 2 mm |
| | graded grid | $\Delta z_{Zoom}(1)$: between 1 st two points closest to phantom surface | ≤ 4 mm | 3 – 4 GHz: ≤ 3 mm 4 – 5 GHz: ≤ 2.5 mm 5 – 6 GHz: ≤ 2 mm |
| | | $\Delta z_{Zoom}(n>1)$: between subsequent points | ≤ 1.5 · $\Delta z_{Zoom}(n-1)$ mm | |
| Minimum zoom scan volume | x, y, z | ≥ 30 mm | 3 – 4 GHz: ≥ 28 mm 4 – 5 GHz: ≥ 25 mm 5 – 6 GHz: ≥ 22 mm | |
| Note: δ is the penetration depth of a plane-wave at normal incidence to the tissue medium; see IEEE Std 1528-2013 for details. * When zoom scan is required and the <i>reported</i> SAR from the <i>area scan based 1-g SAR estimation</i> procedures of KDB Publication 447498 is ≤ 1.4 W/kg, ≤ 8 mm, ≤ 7 mm and ≤ 5 mm zoom scan resolution may be applied, respectively, for 2 GHz to 3 GHz, 3 GHz to 4 GHz and 4 GHz to 6 GHz. | | | | |

Step 4: Power Drift Measurement

The Power Drift Measurement measures the field at the same location as the most recent power reference measurement within the same procedure, and with the same settings. The Power Drift Measurement gives the field difference in dB from the reading conducted within the last Power Reference Measurement. This allows a user to monitor the power drift of the device under test within a batch process. The measurement procedure is the same as Step 1.

When the cube intersects with the surface of the phantom, it is oriented so that 3 vertices touch the surface of the shell or the center of a face is tangent to the surface. The face of the cube closest to the surface is modified in order to conform to the tangent surface.

The zoom scan integer steps can be user defined so as to reduce uncertainty, but normal practice for typical test applications (including FCC) utilize a physical step of 7 x7 x 7 (5mmx5mmx5mm) providing a volume of 30 mm in the X & Y & Z axis.

Tissue Dielectric Parameters for Head and Body Phantoms

The head tissue dielectric parameters recommended by the IEC 62209-1:2016

Recommended Tissue Dielectric Parameters for Head liquid

Table A.3 – Dielectric properties of the head tissue-equivalent liquid

| Frequency MHz | Relative permittivity ϵ_r | Conductivity (σ) S/m |
|------------------|---------------------------------------|----------------------------------|
| 300 | 45,3 | 0,87 |
| 450 | 43,5 | 0,87 |
| <i>750</i> | <i>41,9</i> | <i>0,89</i> |
| 835 | 41,5 | 0,90 |
| 900 | 41,5 | 0,97 |
| 1 450 | 40,5 | 1,20 |
| <i>1 500</i> | <i>40,4</i> | <i>1,23</i> |
| <i>1 640</i> | <i>40,2</i> | <i>1,31</i> |
| <i>1 750</i> | <i>40,1</i> | <i>1,37</i> |
| 1 800 | 40,0 | 1,40 |
| 1 900 | 40,0 | 1,40 |
| 2 000 | 40,0 | 1,40 |
| <i>2 100</i> | <i>39,8</i> | <i>1,49</i> |
| <i>2 300</i> | <i>39,5</i> | <i>1,67</i> |
| 2 450 | 39,2 | 1,80 |
| <i>2 600</i> | <i>39,0</i> | <i>1,96</i> |
| 3 000 | 38,5 | 2,40 |
| <i>3 500</i> | <i>37,9</i> | <i>2,91</i> |
| <i>4 000</i> | <i>37,4</i> | <i>3,43</i> |
| <i>4 500</i> | <i>36,8</i> | <i>3,94</i> |
| <i>5 000</i> | <i>36,2</i> | <i>4,45</i> |
| <i>5 200</i> | <i>36,0</i> | <i>4,66</i> |
| <i>5 400</i> | <i>35,8</i> | <i>4,86</i> |
| <i>5 600</i> | <i>35,5</i> | <i>5,07</i> |
| <i>5 800</i> | <i>35,3</i> | <i>5,27</i> |
| <i>6 000</i> | <i>35,1</i> | <i>5,48</i> |

NOTE For convenience, permittivity and conductivity values at those frequencies which are not part of the original data provided by Drossos et al. [33] or the extension to 5 800 MHz are provided (i.e. the values shown *in italics*). These values were linearly interpolated between the values in this table that are immediately above and below these values, except the values at 6 000 MHz that were linearly extrapolated from the values at 3 000 MHz and 5 800 MHz.

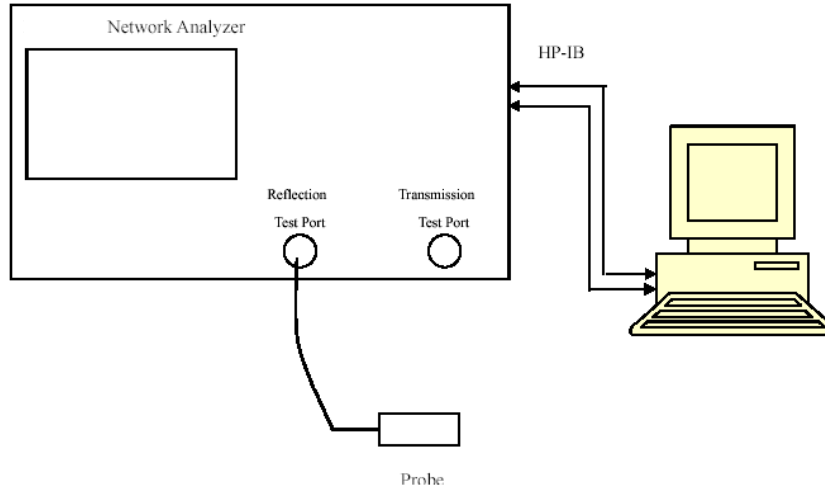
3. EQUIPMENT LIST AND CALIBRATION

3.1 Equipments List & Calibration Information

| Equipment | Model | S/N | Calibration Date | Calibration Due Date |
|--|-----------------|---------------|------------------|----------------------|
| DASY5 Test Software | DASY52.10 | N/A | NCR | NCR |
| DASY5 Measurement Server | DASY5 4.5.12 | 1567 | NCR | NCR |
| Data Acquisition Electronics | DAE4 | 1354 | 2023/11/17 | 2024/11/16 |
| E-Field Probe | EX3DV4 | 7329 | 2024/3/27 | 2025/3/26 |
| Mounting Device | MD4HHTV5 | BJPCTC0152 | NCR | NCR |
| Twin SAM | Twin SAM V5.0 | 1412 | NCR | NCR |
| Dipole, 900 MHz | D900V2 | 1d217 | 2023/3/24 | 2026/3/23 |
| Dipole, 1900 MHz | D1900V2 | 5d251 | 2023/3/27 | 2026/3/26 |
| Dipole, 2450 MHz | D2450V2 | 1102 | 2023/3/27 | 2026/3/26 |
| Dipole, 2600 MHz | D2600V2 | 1206 | 2023/3/27 | 2026/3/26 |
| Simulated Tissue Liquid Head(500-9500 MHz) | HBBL600-10000V6 | 220420-2 | Each Time | / |
| Network Analyzer | 8753B | 2828A00170 | 2023/10/17 | 2024/10/16 |
| Dielectric assessment kit | 1319 | SM DAK 040 CA | NCR | NCR |
| MXG Vector Signal Generator | N5182B | MY51350144 | 2024/4/1 | 2025/3/31 |
| Power Meter | ML2495A | 1106009 | 2023/8/4 | 2024/8/3 |
| Pulse Power Sensor | MA2411A | 10780 | 2023/8/4 | 2024/8/3 |
| Power Amplifier | ZHL-5W-202-S+ | 416402204 | NCR | NCR |
| Power Amplifier | ZVE-6W-83+ | 637202210 | NCR | NCR |
| Directional Coupler | 441493 | 520Z | NCR | NCR |
| Attenuator | 20dB, 100W | LN749 | NCR | NCR |
| Attenuator | 6dB, 150W | 2754 | NCR | NCR |
| Thermometer | DTM3000 | 3892 | 2024/4/1 | 2025/3/31 |
| Thermohygrometer | HTC-1 | N/A | 2024/4/1 | 2025/3/31 |
| Radio Communication Analyzer | MT8820C | 6201181458 | 2024/4/1 | 2025/3/31 |
| Spectrum Analyzer | FSU26 | 100147 | 2024/4/1 | 2025/3/31 |

4. SAR MEASUREMENT SYSTEM VERIFICATION

4.1 Liquid Verification



Liquid Verification Setup Block Diagram

Liquid Verification Results

| Frequency (MHz) | Liquid Type | Liquid Parameter | | Target Value | | Delta (%) | | Tolerance (%) |
|-----------------|------------------------------|------------------|----------------|--------------|----------------|--------------------|----------------------|---------------|
| | | ϵ_r | σ (S/m) | ϵ_r | σ (S/m) | $\Delta\epsilon_r$ | $\Delta\sigma$ (S/m) | |
| 824.2 | Simulated Tissue Liquid Head | 41.696 | 0.921 | 41.55 | 0.9 | 0.35 | 2.33 | ± 5 |
| 826.4 | Simulated Tissue Liquid Head | 41.668 | 0.928 | 41.54 | 0.9 | 0.31 | 3.11 | ± 5 |
| 829 | Simulated Tissue Liquid Head | 41.636 | 0.932 | 41.53 | 0.9 | 0.26 | 3.56 | ± 5 |
| 836.5 | Simulated Tissue Liquid Head | 41.542 | 0.937 | 41.5 | 0.9 | 0.1 | 4.11 | ± 5 |
| 836.6 | Simulated Tissue Liquid Head | 41.541 | 0.942 | 41.5 | 0.9 | 0.1 | 4.67 | ± 5 |
| 844 | Simulated Tissue Liquid Head | 41.442 | 0.948 | 41.5 | 0.91 | -0.14 | 4.18 | ± 5 |
| 846.6 | Simulated Tissue Liquid Head | 41.405 | 0.947 | 41.5 | 0.91 | -0.23 | 4.07 | ± 5 |
| 848.8 | Simulated Tissue Liquid Head | 41.374 | 0.951 | 41.5 | 0.91 | -0.3 | 4.51 | ± 5 |
| 900 | Simulated Tissue Liquid Head | 43.057 | 1.018 | 41.5 | 0.97 | 3.75 | 4.95 | ± 5 |

*Liquid Verification above was performed on 2024/06/17.

| Frequency (MHz) | Liquid Type | Liquid Parameter | | Target Value | | Delta (%) | | Tolerance (%) |
|-----------------|------------------------------|------------------|----------------|--------------|----------------|--------------------|----------------------|---------------|
| | | ϵ_r | σ (S/m) | ϵ_r | σ (S/m) | $\Delta\epsilon_r$ | $\Delta\sigma$ (S/m) | |
| 1850.2 | Simulated Tissue Liquid Head | 41.096 | 1.404 | 40 | 1.4 | 2.74 | 0.29 | ± 5 |
| 1880 | Simulated Tissue Liquid Head | 41.046 | 1.422 | 40 | 1.4 | 2.62 | 1.57 | ± 5 |
| 1900 | Simulated Tissue Liquid Head | 41.016 | 1.434 | 40 | 1.4 | 2.54 | 2.43 | ± 5 |
| 1909.8 | Simulated Tissue Liquid Head | 41.002 | 1.44 | 40 | 1.4 | 2.51 | 2.86 | ± 5 |

*Liquid Verification above was performed on 2024/06/16.

| Frequency (MHz) | Liquid Type | Liquid Parameter | | Target Value | | Delta (%) | | Tolerance (%) |
|-----------------|------------------------------|------------------|----------------|--------------|----------------|--------------------|----------------------|---------------|
| | | ϵ_r | σ (S/m) | ϵ_r | σ (S/m) | $\Delta\epsilon_r$ | $\Delta\sigma$ (S/m) | |
| 2412 | Simulated Tissue Liquid Head | 41.138 | 1.838 | 39.28 | 1.77 | 4.73 | 3.84 | ± 5 |
| 2437 | Simulated Tissue Liquid Head | 41.004 | 1.865 | 39.23 | 1.79 | 4.52 | 4.19 | ± 5 |
| 2450 | Simulated Tissue Liquid Head | 41.048 | 1.88 | 39.2 | 1.8 | 4.71 | 4.44 | ± 5 |
| 2462 | Simulated Tissue Liquid Head | 40.969 | 1.888 | 39.18 | 1.81 | 4.57 | 4.31 | ± 5 |

*Liquid Verification above was performed on 2024/06/16.

| Frequency (MHz) | Liquid Type | Liquid Parameter | | Target Value | | Delta (%) | | Tolerance (%) |
|-----------------|------------------------------|------------------|----------------|--------------|----------------|--------------------|----------------------|---------------|
| | | ϵ_r | σ (S/m) | ϵ_r | σ (S/m) | $\Delta\epsilon_r$ | $\Delta\sigma$ (S/m) | |
| 2510 | Simulated Tissue Liquid Head | 40.794 | 1.95 | 39.12 | 1.86 | 4.28 | 4.84 | ± 5 |
| 2535 | Simulated Tissue Liquid Head | 40.648 | 1.978 | 39.09 | 1.89 | 3.99 | 4.66 | ± 5 |
| 2560 | Simulated Tissue Liquid Head | 40.646 | 2.012 | 39.05 | 1.92 | 4.09 | 4.79 | ± 5 |
| 2593 | Simulated Tissue Liquid Head | 40.545 | 2.022 | 39.01 | 1.95 | 3.93 | 3.69 | ± 5 |
| 2600 | Simulated Tissue Liquid Head | 40.521 | 2.042 | 39 | 1.96 | 3.9 | 4.18 | ± 5 |
| 2619 | Simulated Tissue Liquid Head | 40.46 | 2.065 | 38.98 | 1.98 | 3.8 | 4.29 | ± 5 |
| 2645 | Simulated Tissue Liquid Head | 40.378 | 2.081 | 38.94 | 2.01 | 3.69 | 3.53 | ± 5 |

*Liquid Verification above was performed on 2024/06/16.

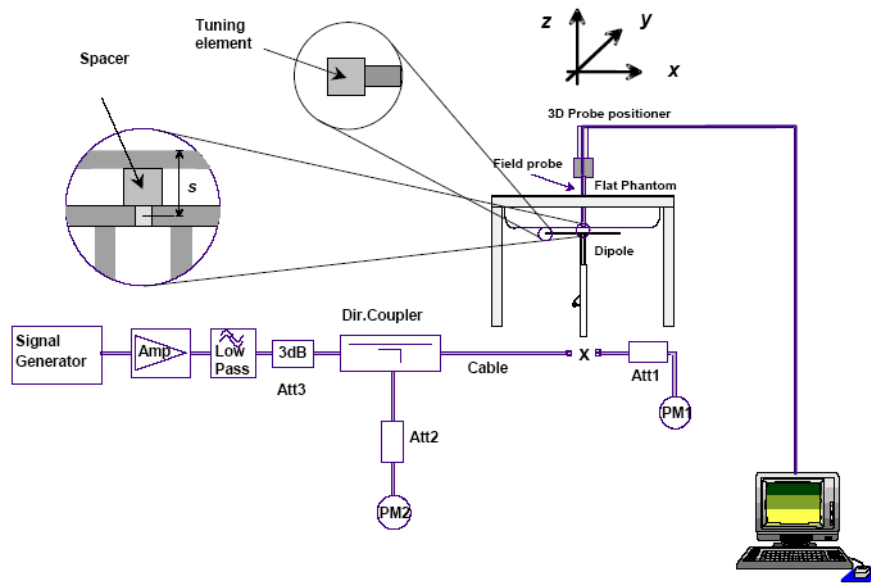
4.2 System Accuracy Verification

Prior to the assessment, the system validation kit was used to test whether the system was operating within its specifications of $\pm 10\%$. The validation results are tabulated below. And also the corresponding SAR plot is attached as well in the SAR plots files.

The spacing distances in the **System Verification Setup Block Diagram** is given by the following:

- a) $s = 15 \text{ mm} \pm 0,2 \text{ mm}$ for $300 \text{ MHz} \leq f \leq 1\,000 \text{ MHz}$;
- b) $s = 10 \text{ mm} \pm 0,2 \text{ mm}$ for $1\,000 \text{ MHz} < f \leq 3\,000 \text{ MHz}$;
- c) $s = 10 \text{ mm} \pm 0,2 \text{ mm}$ for $3\,000 \text{ MHz} < f \leq 6\,000 \text{ MHz}$.

System Verification Setup Block Diagram



System Accuracy Check Results

| Date | Frequency Band | Liquid Type | Input Power (mW) | Measured SAR (W/kg) | Normalized to 1W (W/kg) | Target Value (W/kg) | Delta (%) | Tolerance (%) |
|------------|----------------|------------------------------|------------------|---------------------|-------------------------|---------------------|-----------|---------------|
| 2024/06/17 | 900 MHz | Simulated Tissue Liquid Head | 100 | 1g 1.17 | 11.7 | 10.9 | 7.34 | ± 10 |
| 2024/06/16 | 1900 MHz | Simulated Tissue Liquid Head | 100 | 1g 3.83 | 38.3 | 38.9 | -1.54 | ± 10 |
| 2024/06/16 | 2450 MHz | Simulated Tissue Liquid Head | 100 | 1g 5.24 | 52.4 | 50.9 | 2.95 | ± 10 |
| 2024/06/16 | 2600 MHz | Simulated Tissue Liquid Head | 100 | 1g 5.69 | 56.9 | 56 | 1.61 | ± 10 |

*The SAR values above are normalized to 1 Watt forward power.

4.3 SAR SYSTEM VALIDATION DATA

System Performance 900 MHz Head was performed on 2024/06/17

DUT: D900V2; Type: 900 MHz; Serial: 1d217

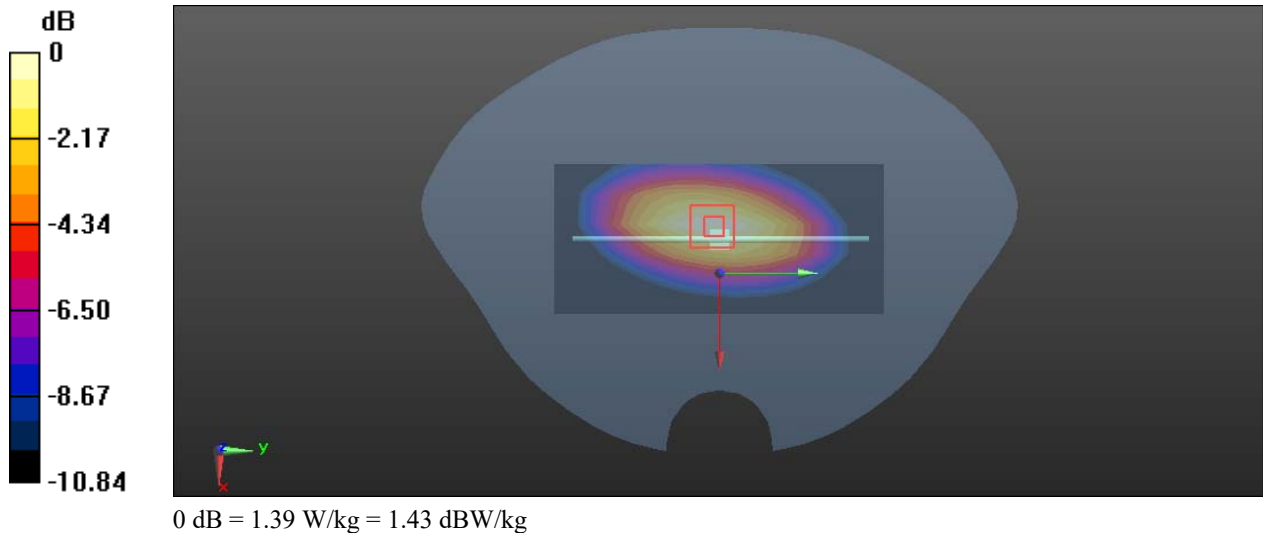
Communication System: CW; Frequency: 900 MHz; Duty Cycle: 1:1
Medium parameters used: $f = 900$ MHz; $\sigma = 1.018$ S/m; $\epsilon_r = 43.057$; $\rho = 1000$ kg/m³
Phantom section: Flat Section

DASY5 Configuration:

- Probe: EX3DV4 - SN7329; ConvF(8.42, 9.5, 8.93)@ 900 MHz; Calibrated: 2024/3/27
- Sensor-Surface: 1.4mm (Mechanical Surface Detection)
- Electronics: DAE4 Sn1354; Calibrated: 2023/11/17
- Phantom: Twin SAM; Type: Twin SAM V5.0; Serial: TP:1412
- Measurement SW: DASY52, Version 52.10 (2); SEMCAD X Version 14.6.12 (7470)

Area Scan (6x12x1): Measurement grid: dx=15mm, dy=15mm
Maximum value of SAR (measured) = 1.38 W/kg

Zoom Scan (5x5x7)/Cube 0: Measurement grid: dx=8mm, dy=8mm, dz=5mm
Reference Value = 35.82 V/m; Power Drift = 0.13 dB
Peak SAR (extrapolated) = 1.73 W/kg
SAR(1 g) = 1.17 W/kg; SAR(10 g) = 0.745 W/kg
Maximum value of SAR (measured) = 1.39 W/kg



System Performance 1900MHz Head was performed on 2024/06/16**DUT: D1900V2; Type: 1900 MHz; Serial: 5d251**

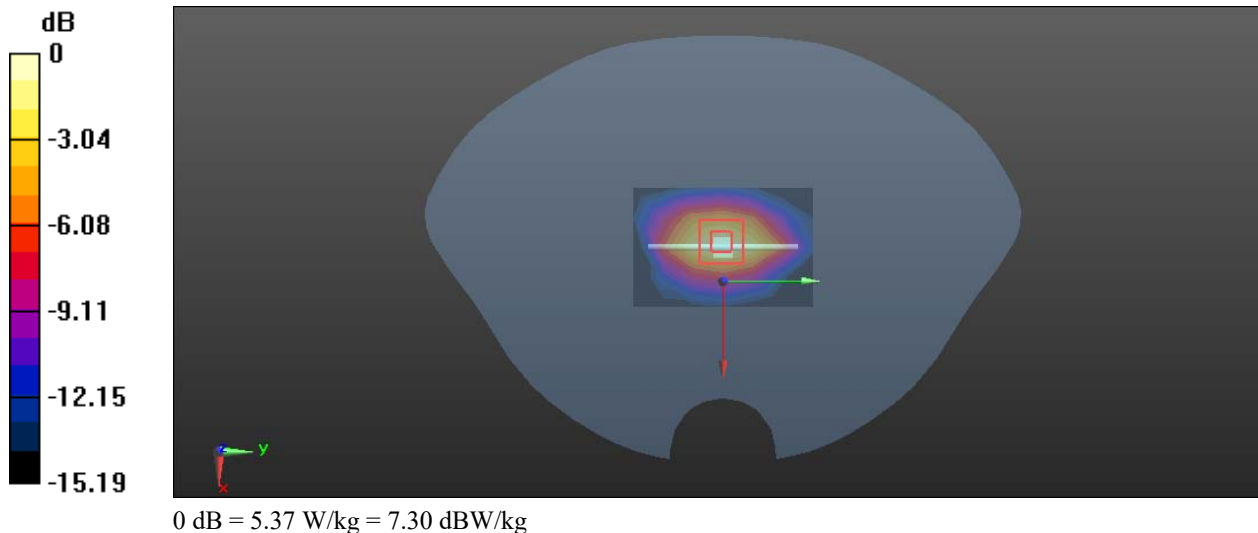
Communication System: CW; Frequency: 1900 MHz; Duty Cycle: 1:1
Medium parameters used: $f = 1900$ MHz; $\sigma = 1.434$ S/m; $\epsilon_r = 41.016$; $\rho = 1000$ kg/m³
Phantom section: Flat Section

DASY5 Configuration:

- Probe: EX3DV4 - SN7329; ConvF(7.37, 8.32, 7.54)@ 1900 MHz; Calibrated: 2024/3/27
- Sensor-Surface: 1.4mm (Mechanical Surface Detection)
- Electronics: DAE4 Sn1354; Calibrated: 2023/11/17
- Phantom: Twin SAM; Type: Twin SAM V5.0; Serial: TP:1412
- Measurement SW: DASY52, Version 52.10 (2); SEMCAD X Version 14.6.12 (7470)

Area Scan (5x7x1): Measurement grid: dx=15mm, dy=15mm
Maximum value of SAR (measured) = 5.35 W/kg

Zoom Scan (5x5x7)/Cube 0: Measurement grid: dx=8mm, dy=8mm, dz=5mm
Reference Value = 62.64 V/m; Power Drift = -0.17 dB
Peak SAR (extrapolated) = 6.07 W/kg
SAR(1 g) = 3.83 W/kg; SAR(10 g) = 2.22 W/kg
Maximum value of SAR (measured) = 5.37 W/kg



System Performance 2450MHz Head was performed on 2024/06/16**DUT: D2450V2; Type: 2450 MHz; Serial: 1102**

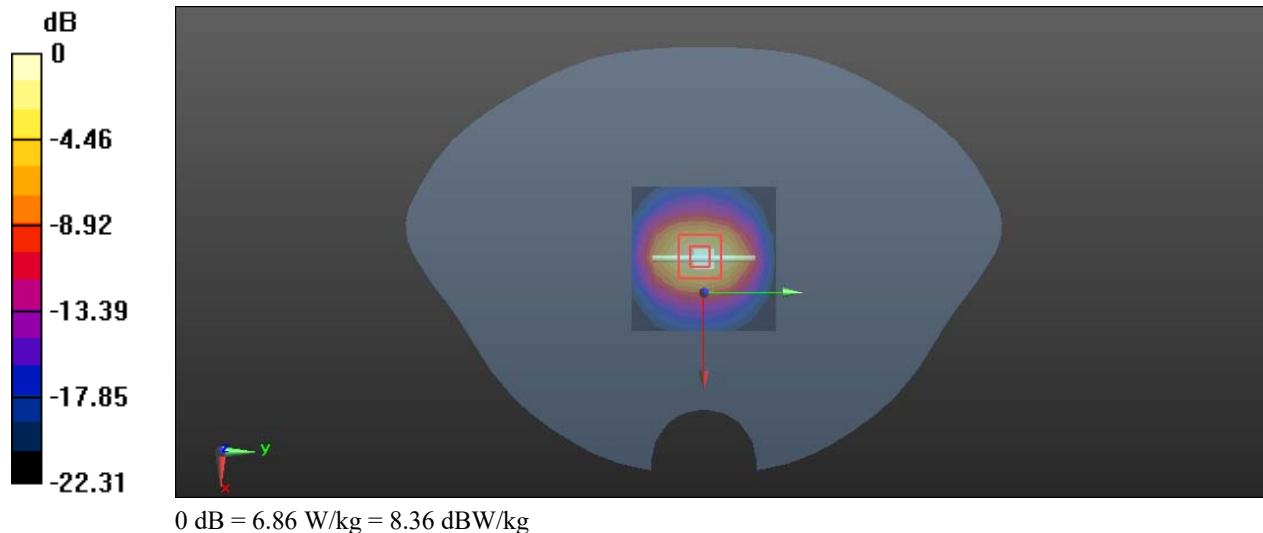
Communication System: CW; Frequency: 2450 MHz; Duty Cycle: 1:1
Medium parameters used: $f = 2450$ MHz; $\sigma = 1.88$ S/m; $\epsilon_r = 41.048$; $\rho = 1000$ kg/m³
Phantom section: Flat Section

DASY5 Configuration:

- Probe: EX3DV4 - SN7329; ConvF(7.05, 7.92, 7.22) @ 2450 MHz; Calibrated: 2024/3/27
- Sensor-Surface: 1.4mm (Mechanical Surface Detection)
- Electronics: DAE4 Sn1354; Calibrated: 2023/11/17
- Phantom: Twin SAM; Type: Twin SAM V5.0; Serial: TP:1412
- Measurement SW: DASY52, Version 52.10 (2); SEMCAD X Version 14.6.12 (7470)

Area Scan (7x7x1): Measurement grid: dx=12mm, dy=12mm
Maximum value of SAR (measured) = 6.81 W/kg

Zoom Scan (7x7x7)/Cube 0: Measurement grid: dx=5mm, dy=5mm, dz=5mm
Reference Value = 58.23 V/m; Power Drift = 0.11 dB
Peak SAR (extrapolated) = 11.2 W/kg
SAR(1 g) = 5.24 W/kg; SAR(10 g) = 2.47 W/kg
Maximum value of SAR (measured) = 6.86 W/kg



System Performance 2600MHz Head was performed on 2024/06/16**DUT: D2600V2; Type: 2600 MHz; Serial: 1206**

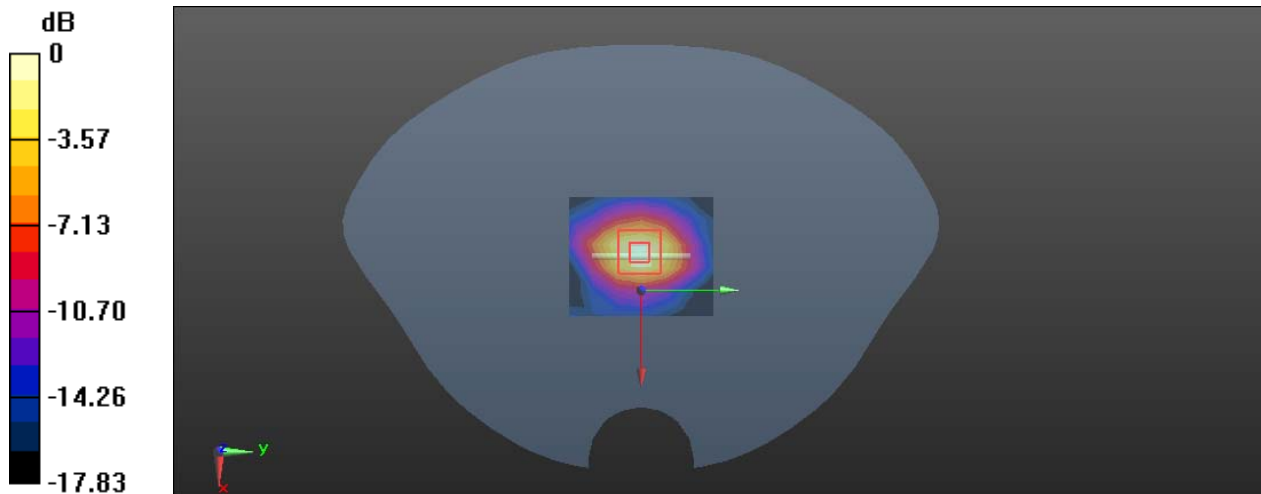
Communication System: CW; Frequency: 2600 MHz; Duty Cycle: 1:1
Medium parameters used: $f = 2600$ MHz; $\sigma = 2.042$ S/m; $\epsilon_r = 40.521$; $\rho = 1000$ kg/m³
Phantom section: Flat Section

DASY5 Configuration:

- Probe: EX3DV4 - SN7329; ConvF(6.91, 7.77, 7.08) @ 2600 MHz; Calibrated: 2024/3/27
- Sensor-Surface: 1.4mm (Mechanical Surface Detection)
- Electronics: DAE4 Sn1354; Calibrated: 2023/11/17
- Phantom: Twin SAM; Type: Twin SAM V5.0; Serial: TP:1412
- Measurement SW: DASY52, Version 52.10 (2); SEMCAD X Version 14.6.12 (7470)

Area Scan (6x7x1): Measurement grid: dx=12mm, dy=12mm
Maximum value of SAR (measured) = 7.41 W/kg

Zoom Scan (7x7x7)/Cube 0: Measurement grid: dx=5mm, dy=5mm, dz=5mm
Reference Value = 67.86 V/m; Power Drift = -0.19 dB
Peak SAR (extrapolated) = 9.89 W/kg
SAR(1 g) = 5.69 W/kg; SAR(10 g) = 2.62 W/kg
Maximum value of SAR (measured) = 8.43 W/kg



5. EUT TEST STRATEGY AND METHODOLOGY

5.1 Test positions for body-worn and other configurations

Body-worn operating configurations should be tested with the belt-clips and holsters attached to the device and positioned against a flat phantom in normal use configurations. Devices with a headset output should be tested with a headset connected to the device. When multiple accessories that do not contain metallic components are supplied with the device, the device may be tested with only the accessory that dictates the closest spacing to the body. When multiple accessories that contain metallic components are supplied with the device, the device must be tested with each accessory that contains a unique metallic component. If multiple accessories share an identical metallic component (e.g., the same metallic belt-clip used with different holsters with no other metallic components), only the accessory that dictates the closest spacing to the body must be tested.

Body-worn accessories may not always be supplied or available as options for some devices that are intended to be authorized for body-worn use. A separation distance of 1.5 cm between the back of the device and a flat phantom is recommended for testing body-worn SAR compliance under such circumstances. Other separation distances may be used, but they should not exceed 2.5 cm. In these cases, the device may use body-worn accessories that provide a separation distance greater than that tested for the device provided however that the accessory contains no metallic components.

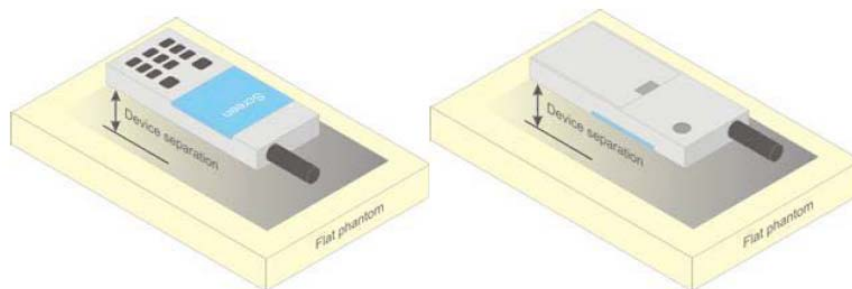


Figure 5 – Test positions for body-worn devices

5.2 Test Distance for SAR Evaluation

In this case the EUT(Equipment Under Test) is set directly against the phantom, when the sensor is on, the test distance is 0mm ; When the sensor is off, the test distance is 14mm.

5.3 SAR Evaluation Procedure

The evaluation was performed with the following procedure:

Step 1: Measurement of the SAR value at a fixed location above the ear point or central position was used as a reference value for assessing the power drop. The SAR at this point is measured at the start of the test and then again at the end of the testing.

Step 2: The SAR distribution at the exposed side of the head was measured at a distance of 4 mm from the inner surface of the shell. The area covered the entire dimension of the head or radiating structures of the EUT, the horizontal grid spacing was 15 mm x 15 mm, and the SAR distribution was determined by integrated grid of 1.5mm x 1.5mm. Based on these data, the area of the maximum absorption was determined by spline interpolation. The first Area Scan covers the entire dimension of the EUT to ensure that the hotspot was correctly identified.

Step 3: Around this point, a volume of 30 mm x 30 mm x 30 mm was assessed by measuring 7x 7 x 7 points. On the basis of this data set, the spatial peak SAR value was evaluated under the following procedure:

1) The data at the surface were extrapolated, since the center of the dipoles is 1.2 mm away from the tip of the probe and the distance between the surface and the lowest measuring point is 1.3 mm. The extrapolation was based on a least square algorithm. A polynomial of the fourth order was calculated through the points in z-axes. This polynomial was then used to evaluate the points between the surface and the probe tip.

2) The maximum interpolated value was searched with a straightforward algorithm. Around this maximum the SAR values averaged over the spatial volumes (1 g or 10 g) were computed by the 3D-Spline interpolation algorithm. The 3D-Spline is composed of three one dimensional splines with the "Not a knot"-condition (in x, y and z-directions). The volume was integrated with the trapezoidal-algorithm. One thousand points (10 x 10 x 10) were interpolated to calculate the averages.

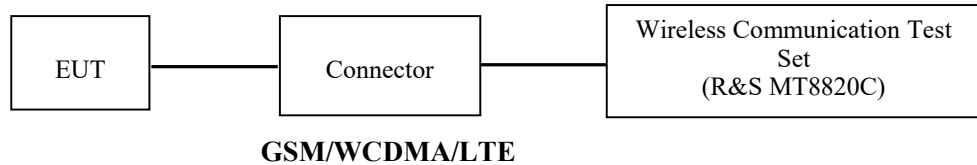
All neighboring volumes were evaluated until no neighboring volume with a higher average value was found.

Step 4: Re-measurement of the SAR value at the same location as in Step 1. If the value changed by more than 5%, the evaluation was repeated.

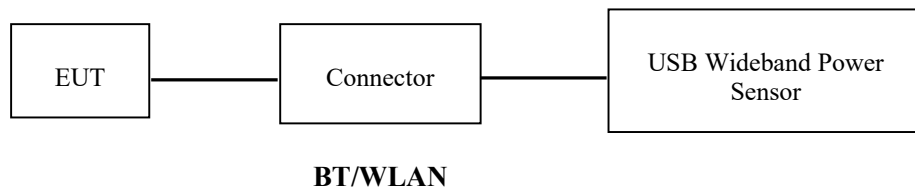
6. CONDUCTED OUTPUT POWER MEASUREMENT

6.1 Test Procedure

The RF output of the transmitter was connected to the input of the Wireless Communication Test Set through Connector.



The RF output of the transmitter was connected to the input port of the USB Wideband Power Sensor through Connector.



6.2 Description of Test Configuration

EUT Operation Condition:

| | |
|---|---|
| EUT Operation Mode: | The system was configured for testing in each operation mode. |
| Equipment Modifications: | No |
| EUT Exercise Software: | No |
| The maximum power was configured per 3GPP Standard for each operation modes as below setting: | |
| GSM/GPRS/EGPRS | |
| Function: Menu select > GSM Mobile Station > GSM 850/1900 | |
| Press Connection control to choose the different menus | |
| Press RESET > choose all the reset all settings | |
| Connection Press Signal Off to turn off the signal and change settings | |
| Network Support > GSM + GPRS | |
| Main Service > Packet Data | |
| Service selection > Test Mode A – Auto Slot Config. off | |
| MS Signal Press Slot Config Bottom on the right twice to select and change the number of time slots and power setting | |
| > Slot configuration > Uplink/Gamma | |
| > 33 dBm for GPRS 850 | |
| > 30 dBm for GPRS 1900 | |
| BS Signal Enter the same channel number for TCH channel (test channel) and BCCH channel | |
| Frequency Offset > + 0 Hz | |
| Mode > BCCH and TCH | |
| BCCH Level > -85 dBm (May need to adjust if link is not stable) | |
| BCCH Channel > choose desire test channel [Enter the same channel number for TCH channel (test channel) and BCCH channel] | |
| Channel Type > Off | |
| P0 > 4 dB | |
| Slot Config > Unchanged (if already set under MS signal) | |
| TCH > choose desired test channel | |
| Hopping > Off | |
| Main Timeslot > 3 | |
| Network Coding Scheme > CS4 (GPRS) | |
| Bit Stream > 2E9-1 PSR Bit Stream | |
| AF/RF Enter appropriate offsets for Ext. Att. Output and Ext. Att. Input | |
| Connection Press Signal on to turn on the signal and change settings | |

WCDMA-Release 99

The following tests were conducted according to the test requirements outlines in section 5.2 of the 3GPP TS34.121-1 specification. The EUT has a nominal maximum output power of 24dBm (+1.7/-3.7).

| | | |
|-----------------------------------|-------------------------|--------------|
| WCDMA General Settings | Loopback Mode | Test Mode 1 |
| | Rel99 RMC | 12.2kbps RMC |
| | Power Control Algorithm | Algorithm2 |
| | β_c / β_d | 8/15 |

WCDMA HSDPA

The following tests were conducted according to the test requirements outlines in section 5.2 of the 3GPP TS34.121-1 specification.

| | Mode | HSDPA | HSDPA | HSDPA | HSDPA |
|------------------------------------|---------------------------------|--------------|-------|-------|-------|
| | Subset | 1 | 2 | 3 | 4 |
| WCDMA General Settings | Loopback Mode | Test Mode 1 | | | |
| | Rel99 RMC | 12.2kbps RMC | | | |
| | HSDPA FRC | H-Set1 | | | |
| | Power Control Algorithm | Algorithm2 | | | |
| | β_c | 2/15 | 12/15 | 15/15 | 15/15 |
| | β_d | 1 /15 | 15/15 | 8/15 | 4/15 |
| | β_d (SF) | 64 | | | |
| | β_c / β_d | 2/15 | 12/15 | 15/8 | 15/4 |
| | β_{hs} | 4/15 | 24/15 | 30/15 | 30/15 |
| | MPR(dB) | 0 | 0 | 0.5 | 0.5 |
| HSDPA Specific Settings | DACK | 8 | | | |
| | DNAK | 8 | | | |
| | DCQI | 8 | | | |
| | Ack-Nack repetition factor | 3 | | | |
| | CQI Feedback | 4ms | | | |
| | CQI Repetition Factor | 2 | | | |
| | $A_{hs} = \beta_{hs} / \beta_c$ | 30/15 | | | |

WCDMA HSUPA

The following tests were conducted according to the test requirements outlines in section 5.2 of the 3GPP TS34.121-1 specification.

| | Mode | HSUPA | HSUPA | HSUPA | HSUPA | HSUPA |
|--------------------------------|----------------------------------|--|--|--|-------|-------|
| | Subset | 1 | 2 | | 4 | 5 |
| WCDMA General Settings | Loopback Mode | Test Mode 1 | | | | |
| | Rel99 RMC | 12.2kbps RMC | | | | |
| | HSDPA FRC | H-Set1 | | | | |
| | HSUPA Test | HSUPA Loopback | | | | |
| | Power Control Algorithm | Algorithm2 | | | | |
| | β_c | 11/15 | 6/15 | 15/15 | 2/15 | 15/15 |
| | β_d | 15/15 | 15/15 | 9/15 | 15/15 | 0 |
| | β_{ec} | 209/225 | 12/15 | 30 15 | 2/15 | 5/15 |
| | β_c/β_d | 11/15 | 6/15 | 15/9 | 2/15 | - |
| | β_{hs} | 22/15 | 12/15 | 30/15 | 4/15 | 5/15 |
| | CM(dB) | 1.0 | 3.0 | 2.0 | 3.0 | 1.0 |
| MPR(dB) | 0 | 2 | 1 | 2 | 0 | |
| HSDPA Specific Settings | DACK | 8 | | | | |
| | DNAK | 8 | | | | |
| | DCQI | 8 | | | | |
| | Ack-Nack repetition factor | 3 | | | | |
| | CQI Feedback | 4ms | | | | |
| | CQI Repetition Factor | 2 | | | | |
| | $A_{hs}=\beta_{hs}/\beta_c$ | 30/15 | | | | |
| HSUPA Specific Settings | DE-DPCCH | 6 | 8 | 8 | 5 | 7 |
| | DHARQ | 0 | 0 | 0 | 0 | 0 |
| | AG Index | 20 | 12 | 15 | 17 | 21 |
| | ETFCI | 75 | 67 | 92 | 71 | 81 |
| | Associated Max UL Data Rate k ps | 242.1 | 174.9 | 482.8 | 205.8 | 308.9 |
| | Reference E_FCIs | E-TFCI 11 E E-TFCI PO 4 E-TFCI 67 E-TFCI PO 18 E-TFCI 71 E-TFCI PO23 E-TFCI 75 E-TFCI PO26 E-TFCI 81 E-TFCI PO 27 | E-TFCI 11 E-TFCI PO4 E-TFCI 92 E-TFCI PO 18 | E-TFCI 11 E E-TFCI PO 4 E-TFCI 67 E-TFCI PO 18 E-TFCI 71 E-TFCI PO23 E-TFCI 75 E-TFCI PO26 E-TFCI 81 E-TFCI PO 27 | | |

LTE (FDD):

The following tests were conducted according to the test requirements in 3GPP TS36.101

The following tests were conducted according to the test requirements outlined in section 6.2 of the 3GPP TS36.101 specification.

UE Power Class: 3 (23 +/- 2dBm). The allowed Maximum Power Reduction (MPR) for the maximum output power due to higher order modulation and transmit bandwidth configuration (resource blocks) is specified in Table 6.2.3-1 of the 3GPP TS36.101.

Table 6.2.3-1: Maximum Power Reduction (MPR) for Power Class 3

| Modulation | Channel bandwidth / Transmission bandwidth (RB) | | | | | | MPR (dB) |
|------------|---|---------|-------|--------|--------|--------|----------|
| | 1.4 MHz | 3.0 MHz | 5 MHz | 10 MHz | 15 MHz | 20 MHz | |
| QPSK | > 5 | > 4 | > 8 | > 12 | > 16 | > 18 | ≤ 1 |
| 16 QAM | ≤ 5 | ≤ 4 | ≤ 8 | ≤ 12 | ≤ 16 | ≤ 18 | ≤ 1 |
| 16 QAM | > 5 | > 4 | > 8 | > 12 | > 16 | > 18 | ≤ 2 |

The allowed A-MPR values specified below in Table 6.2.4.-1 of 3GPP TS36.101 are in addition to the allowed MPR requirements. All the measurements below were performed with A-MPR disabled, by using Network Signaling Value of "NS_01".

Table 6.2.4-1: Additional Maximum Power Reduction (A-MPR)

| Network Signalling value | Requirements (sub-clause) | E-UTRA Band | Channel bandwidth (MHz) | Resources Blocks (N_{RB}) | A-MPR (dB) |
|--------------------------|---------------------------|--------------------------|-------------------------|-------------------------------|---------------|
| NS_01 | 6.6.2.1.1 | Table 5.5-1 | 1.4, 3, 5, 10, 15, 20 | Table 5.6-1 | NA |
| NS_03 | 6.6.2.2.1 | 2, 4, 10, 23, 25, 35, 36 | 3 | >5 | ≤ 1 |
| | | | 5 | >6 | ≤ 1 |
| | | | 10 | >6 | ≤ 1 |
| | | | 15 | >8 | ≤ 1 |
| NS_04 | 6.6.2.2.2 | 41 | 20 | >10 | ≤ 1 |
| | | | 5 | >6 | ≤ 1 |
| NS_05 | 6.6.3.3.1 | 1 | 10, 15, 20 | ≥ 50 | ≤ 1 |
| NS_06 | 6.6.2.2.3 | 12, 13, 14, 17 | 1.4, 3, 5, 10 | Table 5.6-1 | n/a |
| NS_07 | 6.6.2.2.3 | 13 | 10 | Table 6.2.4-2 | Table 6.2.4-2 |
| | 6.6.3.3.2 | | | | Table 6.2.4-2 |
| NS_08 | 6.6.3.3.3 | 19 | 10, 15 | > 44 | ≤ 3 |
| NS_09 | 6.6.3.3.4 | 21 | 10, 15 | > 40 | ≤ 1 |
| | | | | > 55 | ≤ 2 |
| NS_10 | | 20 | 15, 20 | Table 6.2.4-3 | Table 6.2.4-3 |
| NS_11 | 6.6.2.2.1 | 23 ¹ | 1.4, 3, 5, 10 | Table 6.2.4-5 | Table 6.2.4-5 |
| .. | | | | | |
| NS_32 | - | - | - | - | - |

Note 1: Applies to the lower block of Band 23, i.e. a carrier placed in the 2000-2010 MHz region.

TDD-LTE

P TS 36.211 section 4.2 for Type 2 Frame Structure and Table 4.2-2 for uplink-downlink configurations and Table 4.2-1 for Special subframe configurations.

Table 4.2-1: Configuration of special subframe (lengths of DwPTS/GP/UpPTS).

| Special subframe configuration | Normal cyclic prefix in downlink | | | | Extended cyclic prefix in downlink | | |
|--------------------------------|----------------------------------|--------------------------------|----------------------------------|-------------------|------------------------------------|----------------------------------|--|
| | DwPTS | UpPTS | | DwPTS | UpPTS | | |
| | | Normal cyclic prefix in uplink | Extended cyclic prefix in uplink | | Normal cyclic prefix in uplink | Extended cyclic prefix in uplink | |
| 0 | $6592 \cdot T_s$ | $2192 \cdot T_s$ | $2560 \cdot T_s$ | $7680 \cdot T_s$ | $2192 \cdot T_s$ | $2560 \cdot T_s$ | |
| 1 | $19760 \cdot T_s$ | | | $20480 \cdot T_s$ | | | |
| 2 | $21952 \cdot T_s$ | | | $23040 \cdot T_s$ | | | |
| 3 | $24144 \cdot T_s$ | | | $25600 \cdot T_s$ | | | |
| 4 | $26336 \cdot T_s$ | $4384 \cdot T_s$ | $5120 \cdot T_s$ | $7680 \cdot T_s$ | $4384 \cdot T_s$ | $5120 \cdot T_s$ | |
| 5 | $6592 \cdot T_s$ | | | $20480 \cdot T_s$ | | | |
| 6 | $19760 \cdot T_s$ | | | $23040 \cdot T_s$ | | | |
| 7 | $21952 \cdot T_s$ | | | $12800 \cdot T_s$ | | | |
| 8 | $24144 \cdot T_s$ | | | - | - | - | |
| 9 | $13168 \cdot T_s$ | | | - | - | - | |

Table 4.2-2: Uplink-downlink configurations.

| Uplink-downlink configuration | Downlink-to-Uplink Switch-point periodicity | Subframe number | | | | | | | | | |
|-------------------------------|---|-----------------|---|---|---|---|---|---|---|---|---|
| | | 0 | 1 | 2 | 3 | 4 | 5 | 6 | 7 | 8 | 9 |
| 0 | 5 ms | D | S | U | U | U | D | S | U | U | U |
| 1 | 5 ms | D | S | U | U | D | D | S | U | U | D |
| 2 | 5 ms | D | S | U | D | D | D | S | U | D | D |
| 3 | 10 ms | D | S | U | U | U | D | D | D | D | D |
| 4 | 10 ms | D | S | U | U | D | D | D | D | D | D |
| 5 | 10 ms | D | S | U | D | D | D | D | D | D | D |
| 6 | 5 ms | D | S | U | U | U | D | S | U | U | D |

Calculated Duty Cycle

| Uplink-Downlink Configuration | Downlink-to-Uplink Switch-point Periodicity | Subframe Number | | | | | | | | | | Calculated Duty Cycle (%) |
|-------------------------------|---|-----------------|---|---|---|---|---|---|---|---|---|---------------------------|
| | | 0 | 1 | 2 | 3 | 4 | 5 | 6 | 7 | 8 | 9 | |
| 0 | 5 ms | D | S | U | U | U | D | S | U | U | U | 63.33 |
| 1 | 5 ms | D | S | U | U | D | D | S | U | U | D | 43.33 |
| 2 | 5 ms | D | S | U | D | D | D | S | U | D | D | 23.33 |
| 3 | 10 ms | D | S | U | U | U | D | D | D | D | D | 31.67 |
| 4 | 10 ms | D | S | U | U | D | D | D | D | D | D | 21.67 |
| 5 | 10 ms | D | S | U | D | D | D | D | D | D | D | 11.67 |
| 6 | 5 ms | D | S | U | U | U | D | S | U | U | D | 53.33 |

We used configuration 0 for SAR test, that is 63.33%(1:1.58)for duty cycle

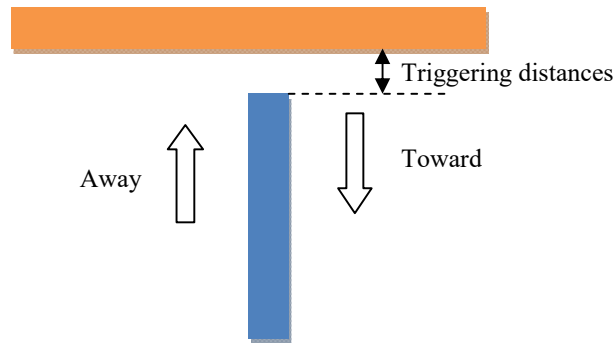
Proximity Sensor Operation

Triggering distances (Per KDB 616217)

1. Proximity sensor triggering distance testing was performed according to the procedures outlined in KDB 616217 D04 section 6.2, and EUT moving further away from the flat phantom and EUT moving toward the flat phantom were both assessed and the tissue-equivalent medium for highest frequency (6000MHz) and lowest (600MHz) frequency was used for proximity sensor triggering testing. It should be applied to determine proximity sensor triggering distances for the back surface and individual edges of a tablet.

2. Capacitive proximity sensor placed coincident with antenna elements at the left end of the pad are utilized to determine when the device comes in proximity of the user's body at the front or back or left side surface of the device. There is no need to do sensor coverage testing for the proximity sensor is designed to support sufficient detection range and sensitivity to cover regions of the sensors in all applicable directions since the proximity sensor entirely covers the antenna

3. The device employs proximity sensors that detect the presence of the user's body or handhold at the back or bottom side of the device. When back surface or bottom edge of body worn condition is detected, GSM 850/PCS 1900/WCDMA Band 2/4/5/ LTE Band 2/4/5/12/17/25/26/41/66/71 reduced power will be active. Other mode or frequency band can't be active. (P-sensor can't work at detecting presence of the user's body at the top, left edges, right edges of the device.)



Proximity Sensor Triggering Distance(mm) and Triggering Power(dBm)**GSM 850:**

| Distance | | 0 | 3 | 6 | 9 | 12 | 15 | 16 | 17 | 18 | 19 | 20 | 21 | 22 | 23 | 24 | 25 | 30 |
|-----------|--------|------|------|------|------|------|------|------|------|------|------|------|------|------|------|------|------|------|
| Back edge | Toward | 25.1 | 25.1 | 25.1 | 25.1 | 25.1 | 32.8 | 32.8 | 32.8 | 32.8 | 32.8 | 32.8 | 32.8 | 32.8 | 32.8 | 32.8 | 32.8 | 32.8 |
| | Away | 25.1 | 25.1 | 25.1 | 25.1 | 25.1 | 25.1 | 25.1 | 25.1 | 32.8 | 32.8 | 32.8 | 32.8 | 32.8 | 32.8 | 32.8 | 32.8 | 32.8 |
| Top edge | Toward | 25.1 | 25.1 | 25.1 | 25.1 | 25.1 | 32.8 | 32.8 | 32.8 | 32.8 | 32.8 | 32.8 | 32.8 | 32.8 | 32.8 | 32.8 | 32.8 | 32.8 |
| | Away | 25.1 | 25.1 | 25.1 | 25.1 | 25.1 | 25.1 | 25.1 | 25.1 | 32.8 | 32.8 | 32.8 | 32.8 | 32.8 | 32.8 | 32.8 | 32.8 | 32.8 |

PCS 1900:

| Distance | | 0 | 3 | 6 | 9 | 12 | 15 | 16 | 17 | 18 | 19 | 20 | 21 | 22 | 23 | 24 | 25 | 30 |
|-----------|--------|------|------|------|------|------|------|------|------|------|------|------|------|------|------|------|------|------|
| Back edge | Toward | 18.5 | 18.5 | 18.5 | 18.5 | 18.5 | 18.5 | 30.3 | 30.3 | 30.3 | 30.3 | 30.3 | 30.3 | 30.3 | 30.3 | 30.3 | 30.3 | 30.3 |
| | Away | 18.5 | 18.5 | 18.5 | 18.5 | 18.5 | 18.5 | 18.5 | 18.5 | 30.3 | 30.3 | 30.3 | 30.3 | 30.3 | 30.3 | 30.3 | 30.3 | 30.3 |
| Top edge | Toward | 18.5 | 18.5 | 18.5 | 18.5 | 18.5 | 18.5 | 30.3 | 30.3 | 30.3 | 30.3 | 30.3 | 30.3 | 30.3 | 30.3 | 30.3 | 30.3 | 30.3 |
| | Away | 18.5 | 18.5 | 18.5 | 18.5 | 18.5 | 18.5 | 18.5 | 18.5 | 30.3 | 30.3 | 30.3 | 30.3 | 30.3 | 30.3 | 30.3 | 30.3 | 30.3 |

WCDMA Band 5:

| Distance | | 0 | 3 | 6 | 9 | 12 | 15 | 16 | 17 | 18 | 19 | 20 | 21 | 22 | 23 | 24 | 25 | 30 |
|-----------|--------|------|------|------|------|------|------|------|------|------|------|------|------|------|------|------|------|------|
| Back edge | Toward | 18.3 | 18.3 | 18.3 | 18.3 | 18.3 | 18.3 | 23.3 | 23.3 | 23.3 | 23.3 | 23.3 | 23.3 | 23.3 | 23.3 | 23.3 | 23.3 | 23.3 |
| | Away | 18.3 | 18.3 | 18.3 | 18.3 | 18.3 | 18.3 | 18.3 | 18.3 | 23.3 | 23.3 | 23.3 | 23.3 | 23.3 | 23.3 | 23.3 | 23.3 | 23.3 |
| Top edge | Toward | 18.3 | 18.3 | 18.3 | 18.3 | 18.3 | 18.3 | 23.3 | 23.3 | 23.3 | 23.3 | 23.3 | 23.3 | 23.3 | 23.3 | 23.3 | 23.3 | 23.3 |
| | Away | 18.3 | 18.3 | 18.3 | 18.3 | 18.3 | 18.3 | 18.3 | 18.3 | 23.3 | 23.3 | 23.3 | 23.3 | 23.3 | 23.3 | 23.3 | 23.3 | 23.3 |

LTE Band 5:

| Distance | | 0 | 3 | 6 | 9 | 12 | 15 | 16 | 17 | 18 | 19 | 20 | 21 | 22 | 23 | 24 | 25 | 30 |
|-----------|--------|------|------|------|------|------|------|------|------|------|------|------|------|------|------|------|------|------|
| Back edge | Toward | 19.3 | 19.3 | 19.3 | 19.3 | 19.3 | 19.3 | 24.3 | 24.3 | 24.3 | 24.3 | 24.3 | 24.3 | 24.3 | 24.3 | 24.3 | 24.3 | 24.3 |
| | Away | 19.3 | 19.3 | 19.3 | 19.3 | 19.3 | 19.3 | 19.3 | 19.3 | 24.3 | 24.3 | 24.3 | 24.3 | 24.3 | 24.3 | 24.3 | 24.3 | 24.3 |
| Top edge | Toward | 19.3 | 19.3 | 19.3 | 19.3 | 19.3 | 19.3 | 24.3 | 24.3 | 24.3 | 24.3 | 24.3 | 24.3 | 24.3 | 24.3 | 24.3 | 24.3 | 24.3 |
| | Away | 19.3 | 19.3 | 19.3 | 19.3 | 19.3 | 19.3 | 19.3 | 19.3 | 24.3 | 24.3 | 24.3 | 24.3 | 24.3 | 24.3 | 24.3 | 24.3 | 24.3 |

LTE Band 7:

| Distance | | 0 | 3 | 6 | 9 | 12 | 15 | 16 | 17 | 18 | 19 | 20 | 21 | 22 | 23 | 24 | 25 | 30 |
|-----------|--------|------|------|------|------|------|------|------|------|------|------|------|------|------|------|------|------|------|
| Back edge | Toward | 10.9 | 10.9 | 10.9 | 10.9 | 10.9 | 10.9 | 23.3 | 23.3 | 23.3 | 23.3 | 23.3 | 23.3 | 23.3 | 23.3 | 23.3 | 23.3 | 23.3 |
| | Away | 10.9 | 10.9 | 10.9 | 10.9 | 10.9 | 10.9 | 10.9 | 10.9 | 23.3 | 23.3 | 23.3 | 23.3 | 23.3 | 23.3 | 23.3 | 23.3 | 23.3 |
| Top edge | Toward | 10.9 | 10.9 | 10.9 | 10.9 | 10.9 | 10.9 | 23.3 | 23.3 | 23.3 | 23.3 | 23.3 | 23.3 | 23.3 | 23.3 | 23.3 | 23.3 | 23.3 |
| | Away | 10.9 | 10.9 | 10.9 | 10.9 | 10.9 | 10.9 | 10.9 | 10.9 | 23.3 | 23.3 | 23.3 | 23.3 | 23.3 | 23.3 | 23.3 | 23.3 | 23.3 |

LTE Band 38:

| Distance | | 0 | 3 | 6 | 9 | 12 | 15 | 16 | 17 | 18 | 19 | 20 | 21 | 22 | 23 | 24 | 25 | 30 |
|-----------|--------|------|------|------|------|------|------|------|------|------|------|------|------|------|------|------|------|------|
| Back edge | Toward | 16.6 | 16.6 | 16.6 | 16.6 | 16.6 | 16.6 | 22.9 | 22.9 | 22.9 | 22.9 | 22.9 | 22.9 | 22.9 | 22.9 | 22.9 | 22.9 | 22.9 |
| | Away | 16.6 | 16.6 | 16.6 | 16.6 | 16.6 | 16.6 | 16.6 | 16.6 | 22.9 | 22.9 | 22.9 | 22.9 | 22.9 | 22.9 | 22.9 | 22.9 | 22.9 |
| Top edge | Toward | 16.6 | 16.6 | 16.6 | 16.6 | 16.6 | 16.6 | 22.9 | 22.9 | 22.9 | 22.9 | 22.9 | 22.9 | 22.9 | 22.9 | 22.9 | 22.9 | 22.9 |
| | Away | 16.6 | 16.6 | 16.6 | 16.6 | 16.6 | 16.6 | 16.6 | 16.6 | 22.9 | 22.9 | 22.9 | 22.9 | 22.9 | 22.9 | 22.9 | 22.9 | 22.9 |

LTE Band 41:

| Distance | | 0 | 3 | 6 | 9 | 12 | 15 | 16 | 17 | 18 | 19 | 20 | 21 | 22 | 23 | 24 | 25 | 30 |
|-----------|--------|------|------|------|------|------|------|------|------|------|------|------|------|------|------|------|------|------|
| Back edge | Toward | 17.2 | 17.2 | 17.2 | 17.2 | 17.2 | 17.2 | 23.4 | 23.4 | 23.4 | 23.4 | 23.4 | 23.4 | 23.4 | 23.4 | 23.4 | 23.4 | 23.4 |
| | Away | 17.2 | 17.2 | 17.2 | 17.2 | 17.2 | 17.2 | 17.2 | 17.2 | 23.4 | 23.4 | 23.4 | 23.4 | 23.4 | 23.4 | 23.4 | 23.4 | 23.4 |
| Top edge | Toward | 17.2 | 17.2 | 17.2 | 17.2 | 17.2 | 17.2 | 23.4 | 23.4 | 23.4 | 23.4 | 23.4 | 23.4 | 23.4 | 23.4 | 23.4 | 23.4 | 23.4 |
| | Away | 17.2 | 17.2 | 17.2 | 17.2 | 17.2 | 17.2 | 17.2 | 17.2 | 23.4 | 23.4 | 23.4 | 23.4 | 23.4 | 23.4 | 23.4 | 23.4 | 23.4 |

Note:

each side minimum detection distance was performed with below:

Toward: moving toward the phantom

Away: Moving away from the phantom

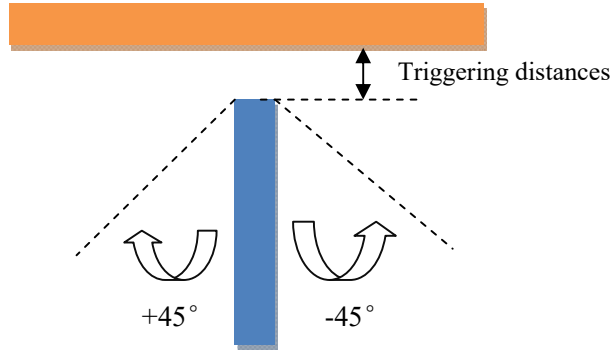
Summary of trigger distances:

| Band | Back edge | | Top edge | |
|----------|-----------|------|----------|------|
| | Toward | Away | Toward | Away |
| 2G/3G/4G | 15 | 15 | 15 | 15 |

Tilt angle

The influence of device tilt angles to proximity sensor triggering was determined by positioning each device edge that contains a transmitting antenna, perpendicular to the flat phantom, at 19 mm separation.

Rotating the device around the edge next to the phantom in $\leq 10^\circ$ increments until the device is $\pm 45^\circ$ from the vertical position at 0° . And the maximum output power remains in the reduced mode.



Proximity Sensor Status Table

| Minimum Distance(mm) | -45 | -40 | -30 | -20 | -10 | 0 | 10 | 20 | 30 | 40 | 45 |
|----------------------|-----|-----|-----|-----|-----|----|----|----|----|----|----|
| 15 | on | on | on | on | on | on | on | on | on | on | on |

Resulting test positions for SAR measurements

| Wireless Technologies | Position | Triggering Distance(mm) | Worst case distance For SAR(mm) |
|-----------------------|----------|-------------------------|---------------------------------|
| WWAN | Back | 15 | 14 |
| | Top | 15 | 14 |

6.3 Maximum Target Output Power

Full power:

| Mode/Band | Max Target Power(dBm) | | |
|-------------------------|-----------------------|--------|------|
| | Channel | | |
| | Low | Middle | High |
| GSM 850 | 33 | 33 | 33 |
| GPRS 1 TX Slot | 33 | 33 | 33 |
| GPRS 2 TX Slot | 32 | 32 | 32 |
| GPRS 3 TX Slot | 30.5 | 30.5 | 30.5 |
| GPRS 4 TX Slot | 29.5 | 29.5 | 29.5 |
| EDGE 1 TX Slot | 29 | 29 | 29 |
| EDGE 2 TX Slot | 28 | 28 | 28 |
| EDGE 3 TX Slot | 26 | 26 | 26 |
| EDGE 4 TX Slot | 25 | 25 | 25 |
| GSM 1900 | 30.5 | 30.5 | 30.5 |
| GPRS 1 TX Slot | 30.5 | 30.5 | 30.5 |
| GPRS 2 TX Slot | 30 | 30 | 30 |
| GPRS 3 TX Slot | 28.5 | 28.5 | 28.5 |
| GPRS 4 TX Slot | 27 | 27 | 27 |
| EDGE 1 TX Slot | 28 | 28 | 28 |
| EDGE 2 TX Slot | 27 | 27 | 27 |
| EDGE 3 TX Slot | 25.5 | 25.5 | 25.5 |
| EDGE 4 TX Slot | 24 | 24 | 24 |
| WCDMA Band 5 | 23.5 | 23.5 | 23.5 |
| HSDPA | 22 | 22 | 22 |
| HSUPA | 22 | 22 | 22 |
| DC-HSDPA | 22 | 22 | 22 |
| HSPA+ | 22 | 22 | 22 |
| LTE Band 5 | 24.5 | 24.5 | 24.5 |
| LTE Band 7 | 23.5 | 23.5 | 23.5 |
| LTE Band 38 | 23.5 | 23.5 | 23.5 |
| LTE Band 41 | 23.5 | 23.5 | 23.5 |
| WLAN 2.4G(802.11b) | 11 | 11 | 11 |
| WLAN 2.4G(802.11g) | 11.5 | 11.5 | 11.5 |
| WLAN 2.4G(802.11n ht20) | 11.5 | 11.5 | 11.5 |
| WLAN 2.4G(802.11n ht40) | 10.5 | 10.5 | 10.5 |
| WLAN 5.2G(802.11a) | 7.5 | 7.5 | 7.5 |
| WLAN 5.2G(802.11n20) | 7 | 7 | 7 |
| WLAN 5.2G(802.11n40) | 7 | / | 7 |
| WLAN 5.2G(802.11ac80) | / | 7 | / |

| Max Target Power(dBm) | | | |
|------------------------------|----------------|---------------|-------------|
| Mode/Band | Channel | | |
| | Low | Middle | High |
| WLAN 5.3G(802.11a) | 7.5 | 7.5 | 7.5 |
| WLAN 5.3G(802.11n20) | 7 | 7 | 7 |
| WLAN 5.3G(802.11n40) | 7.5 | / | 7.5 |
| WLAN 5.3G(802.11ac80) | / | 7 | / |
| WLAN 5.6G(802.11a) | 7.5 | 7.5 | 7.5 |
| WLAN 5.6G(802.11n20) | 7 | 7 | 7 |
| WLAN 5.6G(802.11n40) | 7 | 7 | 7 |
| WLAN 5.6G(802.11ac80) | 7 | 7 | 7 |
| WLAN 5.8G(802.11a) | 7 | 7 | 7 |
| WLAN 5.8G(802.11n20) | 7 | 7 | 7 |
| WLAN 5.8G(802.11n40) | 7 | / | 7 |
| WLAN 5.8G(802.11ac80) | / | 7 | / |
| Bluetooth BDR/EDR | 4.5 | 2.5 | 4.5 |
| BLE | 2 | 3 | 2 |

Reduction power:

| Max Target Power(dBm) | | | |
|------------------------------|----------------|---------------|-------------|
| Mode/Band | Channel | | |
| | Low | Middle | High |
| GSM 850 | 25.5 | 25.5 | 25.5 |
| GPRS 1 TX Slot | 25.5 | 25.5 | 25.5 |
| GPRS 2 TX Slot | 25 | 25 | 25 |
| GPRS 3 TX Slot | 25.5 | 25.5 | 25.5 |
| GPRS 4 TX Slot | 25.5 | 25.5 | 25.5 |
| EDGE 1 TX Slot | 19.5 | 19.5 | 19.5 |
| EDGE 2 TX Slot | 19.5 | 19.5 | 19.5 |
| EDGE 3 TX Slot | 19.5 | 19.5 | 19.5 |
| EDGE 4 TX Slot | 19.5 | 19.5 | 19.5 |
| GSM 1900 | 18.5 | 18.5 | 18.5 |
| GPRS 1 TX Slot | 19 | 19 | 19 |
| GPRS 2 TX Slot | 19 | 19 | 19 |
| GPRS 3 TX Slot | 19 | 19 | 19 |
| GPRS 4 TX Slot | 19 | 19 | 19 |
| EDGE 1 TX Slot | 16 | 16 | 16 |
| EDGE 2 TX Slot | 16 | 16 | 16 |
| EDGE 3 TX Slot | 16 | 16 | 16 |
| EDGE 4 TX Slot | 16 | 16 | 16 |
| WCDMA Band 5 | 18.5 | 18.5 | 18.5 |
| HSDPA | 18 | 18 | 18 |
| HSUPA | 18 | 18 | 18 |
| DC-HSDPA | 18 | 18 | 18 |
| HSPA+ | 18 | 18 | 18 |
| LTE Band 5 | 19.5 | 19.5 | 19.5 |
| LTE Band 7 | 11 | 11 | 11 |
| LTE Band 38 | 17.5 | 17.5 | 17.5 |
| LTE Band 41 | 17.5 | 17.5 | 17.5 |

6.4 Test Results:**Full power:****GSM:**

| Band | Channel No. | Frequency (MHz) | RF Output Power (dBm) |
|----------|-------------|-----------------|-----------------------|
| GSM 850 | 128 | 824.2 | 32.72 |
| | 190 | 836.6 | 32.82 |
| | 251 | 848.8 | 32.59 |
| PCS 1900 | 512 | 1850.2 | 30.33 |
| | 661 | 1880 | 30.27 |
| | 810 | 1909.8 | 30.23 |

GPRS:

| Band | Channel No. | Frequency (MHz) | RF Output Power (dBm) | | | |
|----------|-------------|-----------------|-----------------------|---------|---------|---------|
| | | | 1 slot | 2 slots | 3 slots | 4 slots |
| GSM 850 | 128 | 824.2 | 32.77 | 31.89 | 29.95 | 28.87 |
| | 190 | 836.6 | 32.64 | 31.93 | 30.10 | 29.10 |
| | 251 | 848.8 | 32.59 | 31.78 | 29.96 | 28.96 |
| PCS 1900 | 512 | 1850.2 | 30.30 | 26.73 | 28.01 | 26.83 |
| | 661 | 1880 | 30.16 | 29.69 | 27.96 | 26.74 |
| | 810 | 1909.8 | 30.18 | 29.67 | 27.98 | 26.77 |

EGPRS:

| Band | Channel No. | Frequency (MHz) | RF Output Power (dBm) | | | |
|----------|-------------|-----------------|-----------------------|---------|---------|---------|
| | | | 1 slot | 2 slots | 3 slots | 4 slots |
| GSM 850 | 128 | 824.2 | 27.74 | 26.70 | 24.89 | 24.57 |
| | 190 | 836.6 | 28.93 | 27.82 | 25.91 | 24.73 |
| | 251 | 848.8 | 28.81 | 27.87 | 25.84 | 24.74 |
| PCS 1900 | 512 | 1850.2 | 27.91 | 26.87 | 25.17 | 23.74 |
| | 661 | 1880 | 27.78 | 26.90 | 24.87 | 23.77 |
| | 810 | 1909.8 | 27.80 | 26.92 | 24.78 | 23.61 |

For SAR, the time based average power is relevant, the difference in between depends on the duty cycle of the TDMA signal.

| Number of Time slot | 1 | 2 | 3 | 4 |
|--|-------|-------|----------|-------|
| Duty Cycle | 1:8 | 1:4 | 1:2.66 | 1:2 |
| Time based Ave. power compared to slotted Ave. power | -9 dB | -6 dB | -4.25 dB | -3 dB |
| Crest Factor | 8 | 4 | 2.66 | 2 |

The time based average power for GPRS

| Band | Channel No. | Frequency (MHz) | Time based average Power (dBm) | | | |
|----------|-------------|-----------------|--------------------------------|--------|---------|--------------|
| | | | 1 slot | 2 slot | 3 slots | 4 slots |
| GSM 850 | 128 | 824.2 | 23.77 | 25.89 | 25.7 | 25.87 |
| | 190 | 836.6 | 23.64 | 25.93 | 25.85 | 26.1 |
| | 251 | 848.8 | 23.59 | 25.78 | 25.71 | 25.96 |
| PCS 1900 | 512 | 1850.2 | 21.3 | 20.73 | 23.76 | 23.83 |
| | 661 | 1880 | 21.16 | 23.69 | 23.71 | 23.74 |
| | 810 | 1909.8 | 21.18 | 23.67 | 23.73 | 23.77 |

The time based average power for EGPRS

| Band | Channel No. | Frequency (MHz) | Time based average Power (dBm) | | | |
|----------|-------------|-----------------|--------------------------------|--------|---------|---------|
| | | | 1 slot | 2 slot | 3 slots | 4 slots |
| GSM 850 | 128 | 824.2 | 18.74 | 20.7 | 20.64 | 21.57 |
| | 190 | 836.6 | 19.93 | 21.82 | 21.66 | 21.73 |
| | 251 | 848.8 | 19.81 | 21.87 | 21.59 | 21.74 |
| PCS 1900 | 512 | 1850.2 | 18.91 | 20.87 | 20.92 | 20.74 |
| | 661 | 1880 | 18.78 | 20.9 | 20.62 | 20.77 |
| | 810 | 1909.8 | 18.8 | 20.92 | 20.53 | 20.61 |

Note:

1. Rohde & Schwarz Radio Communication Tester (CMU200) was used for the measurement of GSM peak and average output power for active timeslots.
2. For GPRS, 1, 2, 3 and 4 timeslots has been activated separately with power level 3(850 MHz band) and 3(1900 MHz band).

**WCDMA:
Results (12.2kbps RMC)**

| Band | Frequency (MHz) | RF Output Power (dBm) |
|--------------|-----------------|-----------------------|
| WCDMA Band 5 | 826.4 | 23.06 |
| | 836.6 | 23.32 |
| | 846.6 | 23.19 |

Results (HSDPA)

| Band | Frequency (MHz) | RF Output Power (dBm) | | | |
|--------------|-----------------|-----------------------|----------|----------|----------|
| | | Subset 1 | Subset 2 | Subset 3 | Subset 4 |
| WCDMA Band 5 | 826.4 | 21.11 | 21.44 | 21.42 | 21.27 |
| | 836.6 | 21.21 | 21.42 | 21.43 | 21.36 |
| | 846.6 | 21.25 | 21.43 | 21.27 | 21.42 |

Results (HSUPA)

| Band | Frequency (MHz) | RF Output Power (dBm) | | | | |
|--------------|-----------------|-----------------------|----------|----------|----------|----------|
| | | Subset 1 | Subset 2 | Subset 3 | Subset 4 | Subset 5 |
| WCDMA Band 5 | 826.4 | 20.05 | 21.40 | 21.22 | 21.22 | 20.96 |
| | 836.6 | 19.97 | 21.32 | 21.27 | 21.33 | 20.99 |
| | 846.6 | 20.07 | 21.43 | 21.33 | 21.28 | 21.02 |

Results (DC-HSDPA)

| Band | Frequency (MHz) | RF Output Power (dBm) | | | |
|--------------|-----------------|-----------------------|----------|----------|----------|
| | | Subset 1 | Subset 2 | Subset 3 | Subset 4 |
| WCDMA Band 5 | 826.4 | 21.13 | 21.19 | 21.02 | 21.13 |
| | 836.6 | 21.08 | 21.12 | 21.16 | 21.17 |
| | 846.6 | 21.16 | 21.01 | 21.19 | 21.08 |

Results (HSPA+)

| Band | Frequency (MHz) | RF Output Power (dBm) |
|--------------|-----------------|-----------------------|
| WCDMA Band 5 | 826.4 | 21.16 |
| | 836.6 | 21.02 |
| | 846.6 | 21.14 |

Note:

1. The default test configuration is to measure SAR with an established radio link between the EUT and a communication test set using a 12.2 kbps RMC (reference measurement Channel) Configured in Test Loop Model 1.
2. KDB 941225 D01-Body SAR is not required for HSDPA/HSUPA/DC-HSDPA/HSPA+ when the maximum average output of each RF channel is less than $\frac{1}{4}$ dB higher than measured 12.2kbps RMC or the maximum SAR for 12.2kbps RMC is < 75% of SAR limit.

LTE Band 5:

| Test Bandwidth | Test Modulation | Resource Block & RB offset | Target MPR | Meas MPR | Low Channel (dBm) | Middle Channel (dBm) | High Channel (dBm) |
|----------------|-----------------|----------------------------|------------|----------|-------------------|----------------------|--------------------|
| 1.4M | QPSK | RB1#0 | 0 | 0 | 24.16 | 23.8 | 24.12 |
| | | RB1#3 | 0 | 0 | 24.02 | 23.98 | 24.26 |
| | | RB1#5 | 0 | 0 | 23.87 | 23.85 | 24.06 |
| | | RB3#0 | 1 | 1 | 23.92 | 24.06 | 24.12 |
| | | RB3#1 | 1 | 1 | 24.04 | 24.09 | 24.09 |
| | | RB3#3 | 1 | 1 | 24.03 | 23.93 | 23.96 |
| | | RB6#0 | 1 | 1 | 23.08 | 23.04 | 23.04 |
| | 16-QAM | RB1#0 | 1 | 1 | 22.74 | 22.69 | 23.18 |
| | | RB1#3 | 1 | 1 | 23.01 | 22.92 | 22.79 |
| | | RB1#5 | 2 | 2 | 22.8 | 22.86 | 22.79 |
| | | RB3#0 | 2 | 2 | 23.08 | 23.05 | 23.03 |
| | | RB3#1 | 2 | 2 | 23.24 | 23.05 | 23.09 |
| | | RB3#3 | 2 | 2 | 23.08 | 23.03 | 23.16 |
| | | RB6#0 | 2 | 2 | 22.33 | 22.25 | 22.01 |
| 3M | QPSK | RB1#0 | 0 | 0 | 23.85 | 23.87 | 24.2 |
| | | RB1#8 | 0 | 0 | 23.97 | 23.97 | 24.1 |
| | | RB1#14 | 0 | 0 | 23.85 | 23.98 | 24.12 |
| | | RB8#0 | 1 | 1 | 23.04 | 23.15 | 22.92 |
| | | RB8#4 | 1 | 1 | 23.1 | 23.01 | 22.92 |
| | | RB8#7 | 1 | 1 | 23.01 | 23.05 | 23.01 |
| | | RB15#0 | 1 | 1 | 23.07 | 23.12 | 23.02 |
| | 16-QAM | RB1#0 | 1 | 1 | 22.84 | 22.96 | 23.26 |
| | | RB1#8 | 1 | 1 | 22.88 | 22.83 | 23.47 |
| | | RB1#14 | 1 | 1 | 22.86 | 22.89 | 23.36 |
| | | RB8#0 | 2 | 2 | 21.93 | 22.12 | 22.09 |
| | | RB8#4 | 1 | 1 | 21.94 | 21.98 | 22.25 |
| | | RB8#7 | 2 | 2 | 22.08 | 22.19 | 22.2 |
| | | RB15#0 | 2 | 2 | 22.11 | 22.05 | 22.22 |
| 5M | QPSK | RB1#0 | 0 | 0 | 23.91 | 23.99 | 23.9 |
| | | RB1#12 | 0 | 0 | 24.11 | 24.02 | 24.09 |
| | | RB1#24 | 0 | 0 | 23.97 | 23.89 | 23.79 |
| | | RB12#0 | 1 | 1 | 23.08 | 22.94 | 22.97 |
| | | RB12#13 | 1 | 1 | 22.96 | 23.04 | 23 |
| | | RB12#7 | 1 | 1 | 23.15 | 22.99 | 23.06 |
| | | RB25#0 | 1 | 1 | 23.03 | 23.02 | 23.08 |
| | 16-QAM | RB1#0 | 1 | 1 | 23 | 22.98 | 23.46 |
| | | RB1#12 | 1 | 1 | 23.16 | 23.18 | 23.67 |
| | | RB1#24 | 1 | 1 | 22.99 | 22.94 | 23.54 |
| | | RB12#0 | 2 | 2 | 22.12 | 22.11 | 22.2 |
| RB12#13 | 2 | 2 | 22.05 | 22.01 | 22.04 | | |

| | | | | | | | |
|-----|--------|---------|---|---|-------|-------|--------------|
| | | RB12#7 | 2 | 2 | 22.18 | 22.13 | 22.09 |
| | | RB25#0 | 2 | 2 | 22 | 22.03 | 22.19 |
| 10M | QPSK | RB1#0 | 0 | 0 | 23.83 | 24.01 | 24.09 |
| | | RB1#25 | 0 | 0 | 24.11 | 24.19 | 24.35 |
| | | RB1#49 | 1 | 1 | 23.78 | 23.99 | 24.08 |
| | | RB25#0 | 1 | 1 | 23.19 | 22.98 | 23.1 |
| | | RB25#12 | 1 | 1 | 23.09 | 23.1 | 23.04 |
| | | RB25#25 | 1 | 1 | 23.23 | 23.15 | 22.93 |
| | | RB50#0 | 1 | 1 | 23.15 | 23.07 | 23.03 |
| | | RB1#0 | 1 | 1 | 22.7 | 22.91 | 23.25 |
| | 16-QAM | RB1#25 | 1 | 1 | 22.89 | 23.14 | 23.51 |
| | | RB1#49 | 1 | 1 | 22.68 | 22.98 | 23.24 |
| | | RB25#0 | 2 | 2 | 22.3 | 22.04 | 22.16 |
| | | RB25#12 | 2 | 2 | 22.2 | 22.14 | 22.25 |
| | | RB25#25 | 2 | 2 | 22.13 | 22.22 | 22.01 |
| | | RB50#0 | 2 | 2 | 22.24 | 21.98 | 22.03 |

LTE Band 7:

| Test Bandwidth | Test Modulation | Resource Block & RB offset | Target MPR | Meas MPR | Low Channel (dBm) | Middle Channel (dBm) | High Channel (dBm) |
|----------------|-----------------|----------------------------|------------|----------|-------------------|----------------------|--------------------|
| 5M | QPSK | RB1#0 | 0 | 0 | 22.73 | 22.78 | 22.45 |
| | | RB1#12 | 0 | 0 | 23 | 22.95 | 22.76 |
| | | RB1#24 | 0 | 0 | 22.7 | 22.67 | 22.35 |
| | | RB12#0 | 1 | 1 | 21.9 | 21.73 | 21.67 |
| | | RB12#13 | 1 | 1 | 21.94 | 21.81 | 21.6 |
| | | RB12#7 | 1 | 1 | 21.98 | 21.91 | 21.67 |
| | | RB25#0 | 1 | 1 | 21.92 | 21.82 | 21.66 |
| | 16-QAM | RB1#0 | 1 | 1 | 21.83 | 21.67 | 21.96 |
| | | RB1#12 | 2 | 2 | 22.11 | 22.05 | 22.36 |
| | | RB1#24 | 2 | 2 | 21.86 | 21.65 | 21.99 |
| | | RB12#0 | 2 | 2 | 21 | 20.94 | 20.74 |
| | | RB12#13 | 2 | 2 | 21.02 | 20.9 | 20.73 |
| | | RB12#7 | 0 | 0 | 21.18 | 20.82 | 20.81 |
| | | RB25#0 | 0 | 0 | 20.95 | 20.91 | 20.65 |
| 10M | QPSK | RB1#0 | 1 | 1 | 22.62 | 22.81 | 22.72 |
| | | RB1#25 | 1 | 1 | 22.86 | 22.87 | 22.81 |
| | | RB1#49 | 1 | 1 | 22.78 | 22.6 | 22.75 |
| | | RB25#0 | 1 | 1 | 21.87 | 21.91 | 21.67 |
| | | RB25#12 | 1 | 1 | 21.91 | 21.91 | 21.57 |
| | | RB25#25 | 1 | 1 | 22.04 | 21.76 | 21.49 |
| | | RB50#0 | 2 | 2 | 21.95 | 21.9 | 21.55 |
| | 16-QAM | RB1#0 | 2 | 2 | 21.52 | 21.71 | 21.91 |
| | | RB1#25 | 2 | 2 | 21.72 | 21.76 | 21.99 |
| | | RB1#49 | 2 | 2 | 21.66 | 21.75 | 21.98 |
| | | RB25#0 | 0 | 0 | 20.99 | 20.93 | 20.6 |
| | | RB25#12 | 0 | 0 | 20.99 | 20.93 | 20.8 |
| | | RB25#25 | 1 | 1 | 21.14 | 20.9 | 20.62 |
| | | RB50#0 | 1 | 1 | 20.93 | 20.79 | 20.62 |
| 15M | QPSK | RB1#0 | 1 | 1 | 23 | 22.62 | 22.77 |
| | | RB1#37 | 1 | 1 | 23.08 | 22.99 | 22.9 |
| | | RB1#74 | 1 | 1 | 22.79 | 22.5 | 22.62 |
| | | RB36#0 | 1 | 1 | 22.03 | 21.91 | 21.78 |
| | | RB36#20 | 2 | 2 | 21.98 | 21.96 | 21.75 |
| | | RB36#39 | 2 | 2 | 22 | 21.86 | 21.71 |
| | | RB75#0 | 2 | 2 | 21.97 | 21.81 | 21.57 |
| | 16-QAM | RB1#0 | 1 | 1 | 21.91 | 21.63 | 21.86 |
| | | RB1#37 | 1 | 1 | 22.12 | 21.92 | 22.12 |
| | | RB1#74 | 1 | 1 | 21.75 | 21.66 | 21.91 |
| | | RB36#0 | 1 | 1 | 20.96 | 20.81 | 20.71 |
| | | RB36#20 | 2 | 2 | 20.87 | 20.82 | 20.78 |
| | | RB36#39 | 2 | 2 | 21.03 | 20.91 | 20.71 |

| | | | | | | | |
|-----|--------|---------|---|---|-------|-------|-------|
| 20M | QPSK | RB75#0 | 2 | 2 | 21 | 20.83 | 20.76 |
| | | RB1#0 | 0 | 0 | 22.51 | 22.57 | 22.25 |
| | | RB1#49 | 0 | 0 | 23.36 | 23.25 | 23.36 |
| | | RB1#99 | 1 | 1 | 22.51 | 22.43 | 22.18 |
| | | RB50#0 | 1 | 1 | 23.08 | 23.14 | 23.09 |
| | | RB50#24 | 1 | 1 | 21.92 | 21.83 | 21.7 |
| | | RB50#50 | 1 | 1 | 21.89 | 21.8 | 21.75 |
| | | RB100#0 | 1 | 1 | 23.04 | 22.79 | 22.64 |
| | 16-QAM | RB1#0 | 1 | 1 | 21.83 | 22.28 | 21.83 |
| | | RB1#49 | 1 | 1 | 22.18 | 22.55 | 21.99 |
| | | RB1#99 | 1 | 1 | 21.84 | 22.21 | 21.67 |
| | | RB50#0 | 2 | 2 | 20.87 | 20.97 | 20.63 |
| | | RB50#24 | 2 | 2 | 20.91 | 20.98 | 20.78 |
| | | RB50#50 | 2 | 2 | 20.91 | 20.89 | 20.72 |
| | | RB100#0 | 2 | 2 | 20.94 | 20.89 | 20.67 |

LTE Band 38:

| Test Bandwidth | Test Modulation | Resource Block & RB offset | Target MPR | Meas MPR | Low Channel (dBm) | Middle Channel (dBm) | High Channel (dBm) |
|----------------|-----------------|----------------------------|------------|----------|-------------------|----------------------|--------------------|
| 5M | QPSK | RB1#0 | 0 | 0 | 22.63 | 22.53 | 22.38 |
| | | RB1#12 | 0 | 0 | 22.92 | 22.78 | 22.83 |
| | | RB1#24 | 0 | 0 | 22.65 | 22.53 | 22.51 |
| | | RB12#0 | 1 | 1 | 21.43 | 21.4 | 21.57 |
| | | RB12#13 | 1 | 1 | 21.5 | 21.41 | 21.49 |
| | | RB12#7 | 1 | 1 | 21.58 | 21.6 | 21.67 |
| | | RB25#0 | 1 | 1 | 21.43 | 21.51 | 21.61 |
| | 16-QAM | RB1#0 | 1 | 1 | 21.6 | 21.9 | 21.74 |
| | | RB1#12 | 1 | 1 | 21.9 | 22.25 | 22.03 |
| | | RB1#24 | 2 | 2 | 21.66 | 21.81 | 21.63 |
| | | RB12#0 | 2 | 2 | 20.32 | 20.3 | 20.46 |
| | | RB12#13 | 2 | 2 | 20.46 | 20.53 | 20.62 |
| | | RB12#7 | 2 | 2 | 20.51 | 20.56 | 20.52 |
| | | RB25#0 | 2 | 2 | 20.58 | 20.53 | 20.56 |
| 10M | QPSK | RB1#0 | 0 | 0 | 22.51 | 22.41 | 22.57 |
| | | RB1#25 | 0 | 0 | 22.98 | 22.78 | 22.88 |
| | | RB1#49 | 1 | 1 | 22.52 | 22.29 | 22.65 |
| | | RB25#0 | 1 | 1 | 21.52 | 21.61 | 21.47 |
| | | RB25#12 | 1 | 1 | 21.58 | 21.62 | 21.5 |
| | | RB25#25 | 1 | 1 | 21.46 | 21.61 | 21.54 |
| | | RB50#0 | 1 | 1 | 21.37 | 21.49 | 21.44 |
| | 16-QAM | RB1#0 | 1 | 1 | 21.67 | 21.6 | 21.81 |
| | | RB1#25 | 1 | 1 | 22.07 | 21.92 | 22.1 |
| | | RB1#49 | 2 | 2 | 21.68 | 21.6 | 21.83 |
| | | RB25#0 | 2 | 2 | 20.6 | 20.71 | 20.46 |
| | | RB25#12 | 2 | 2 | 20.58 | 20.48 | 20.68 |
| | | RB25#25 | 2 | 2 | 20.5 | 20.54 | 20.59 |
| | | RB50#0 | 2 | 2 | 20.62 | 20.44 | 20.54 |
| 15M | QPSK | RB1#0 | 0 | 0 | 22.45 | 22.34 | 22.46 |
| | | RB1#37 | 0 | 0 | 22.89 | 22.71 | 22.81 |
| | | RB1#74 | 1 | 1 | 22.41 | 22.32 | 22.39 |
| | | RB36#0 | 1 | 1 | 21.52 | 21.54 | 21.49 |
| | | RB36#20 | 1 | 1 | 21.56 | 21.55 | 21.63 |
| | | RB36#39 | 1 | 1 | 21.59 | 21.59 | 21.48 |
| | | RB75#0 | 1 | 1 | 21.63 | 21.6 | 21.5 |
| | 16-QAM | RB1#0 | 1 | 1 | 21.82 | 21.49 | 21.71 |
| | | RB1#37 | 1 | 1 | 22.15 | 21.87 | 22.07 |
| | | RB1#74 | 2 | 2 | 21.86 | 21.54 | 21.96 |
| | | RB36#0 | 2 | 2 | 20.58 | 20.64 | 20.38 |
| | | RB36#20 | 2 | 2 | 20.51 | 20.53 | 20.47 |

| | | | | | | | |
|-----|--------|---------|---|---|-------|-------|-------|
| | | RB36#39 | 2 | 2 | 20.58 | 20.68 | 20.37 |
| | | RB75#0 | 2 | 2 | 20.44 | 20.69 | 20.47 |
| 20M | QPSK | RB1#0 | 0 | 0 | 22.38 | 22.45 | 22.16 |
| | | RB1#49 | 0 | 0 | 22.68 | 22.65 | 22.64 |
| | | RB1#99 | 1 | 1 | 22.52 | 22.33 | 22.25 |
| | | RB50#0 | 1 | 1 | 21.55 | 21.58 | 21.41 |
| | | RB50#24 | 1 | 1 | 21.58 | 21.55 | 21.55 |
| | | RB50#50 | 1 | 1 | 21.61 | 21.44 | 21.51 |
| | | RB100#0 | 1 | 1 | 21.52 | 21.52 | 21.45 |
| | | RB1#0 | 1 | 1 | 21.45 | 21.52 | 21.46 |
| | 16-QAM | RB1#49 | 1 | 1 | 21.71 | 21.84 | 21.78 |
| | | RB1#99 | 1 | 1 | 21.55 | 21.55 | 21.44 |
| | | RB50#0 | 2 | 2 | 20.58 | 20.46 | 20.53 |
| | | RB50#24 | 2 | 2 | 20.58 | 20.56 | 20.48 |
| | | RB50#50 | 2 | 2 | 20.45 | 20.59 | 20.55 |
| | | RB100#0 | 2 | 2 | 20.39 | 20.45 | 20.42 |

LTE Band 41:

| Test Bandwidth | Test Modulation | Resource Block & RB offset | Target MPR | Meas MPR | Low Channel (dBm) | Middle Channel (dBm) | 2619MHz (dBm) | High Channel (dBm) |
|----------------|-----------------|----------------------------|------------|----------|-------------------|----------------------|---------------|--------------------|
| 5M | QPSK | RB1#0 | 0 | 0 | 22.9 | 22.73 | 22.84 | 23.08 |
| | | RB1#12 | 0 | 0 | 23.2 | 23.07 | 23.05 | 23.42 |
| | | RB1#24 | 0 | 0 | 22.92 | 22.63 | 22.66 | 23.2 |
| | | RB12#0 | 1 | 1 | 21.84 | 21.68 | 21.78 | 22 |
| | | RB12#13 | 1 | 1 | 21.85 | 21.75 | 21.86 | 22.1 |
| | | RB12#7 | 1 | 1 | 22.06 | 21.74 | 21.89 | 22.08 |
| | | RB25#0 | 1 | 1 | 21.87 | 21.66 | 21.66 | 22.01 |
| | 16-QAM | RB1#0 | 1 | 1 | 22.44 | 21.84 | 21.81 | 22.3 |
| | | RB1#12 | 1 | 1 | 22.63 | 22.17 | 22.29 | 22.49 |
| | | RB1#24 | 2 | 2 | 22.28 | 21.91 | 22.05 | 22.29 |
| | | RB12#0 | 2 | 2 | 21.16 | 20.65 | 20.64 | 21.02 |
| | | RB12#13 | 2 | 2 | 20.99 | 20.8 | 20.86 | 21 |
| | | RB12#7 | 2 | 2 | 21.14 | 20.82 | 20.92 | 21.14 |
| | | RB25#0 | 2 | 2 | 20.95 | 20.66 | 20.62 | 21.12 |
| 10M | QPSK | RB1#0 | 0 | 0 | 23.13 | 22.8 | 22.79 | 22.95 |
| | | RB1#25 | 0 | 0 | 23.31 | 23.11 | 23.17 | 23.16 |
| | | RB1#49 | 1 | 1 | 23.18 | 22.85 | 22.93 | 23 |
| | | RB25#0 | 1 | 1 | 22.01 | 21.84 | 21.8 | 21.93 |
| | | RB25#12 | 1 | 1 | 21.87 | 21.77 | 21.83 | 22.14 |
| | | RB25#25 | 1 | 1 | 21.95 | 21.75 | 21.76 | 21.97 |
| | | RB50#0 | 1 | 1 | 22 | 21.76 | 21.86 | 22.08 |
| | 16-QAM | RB1#0 | 1 | 1 | 22.53 | 22 | 21.97 | 22.1 |
| | | RB1#25 | 1 | 1 | 22.58 | 22.24 | 22.35 | 22.34 |
| | | RB1#49 | 2 | 2 | 22.2 | 21.98 | 22.06 | 22.22 |
| | | RB25#0 | 2 | 2 | 20.95 | 20.72 | 20.76 | 21.11 |
| | | RB25#12 | 2 | 2 | 21.14 | 20.9 | 20.97 | 20.94 |
| | | RB25#25 | 2 | 2 | 21.09 | 20.77 | 20.76 | 21.12 |
| | | RB50#0 | 2 | 2 | 20.94 | 20.81 | 20.93 | 21.04 |
| 15M | QPSK | RB1#0 | 0 | 0 | 23.01 | 22.88 | 22.97 | 22.79 |
| | | RB1#37 | 0 | 0 | 23.19 | 23.01 | 22.99 | 23.2 |
| | | RB1#74 | 1 | 1 | 22.88 | 22.72 | 22.71 | 22.9 |
| | | RB36#0 | 1 | 1 | 21.9 | 21.82 | 21.95 | 22.12 |
| | | RB36#20 | 1 | 1 | 21.93 | 21.87 | 21.95 | 21.99 |
| | | RB36#39 | 1 | 1 | 21.82 | 21.91 | 22.02 | 22.04 |
| | | RB75#0 | 1 | 1 | 22 | 21.78 | 21.78 | 21.99 |
| | 16-QAM | RB1#0 | 1 | 1 | 22.35 | 22.02 | 22.05 | 22.07 |
| | | RB1#37 | 1 | 1 | 22.57 | 22.43 | 22.46 | 22.26 |
| | | RB1#74 | 2 | 2 | 22.23 | 22.13 | 22.11 | 22.12 |
| | | RB36#0 | 2 | 2 | 20.81 | 20.85 | 20.89 | 21.05 |
| | | RB36#20 | 2 | 2 | 20.76 | 20.84 | 20.82 | 21.1 |
| | | RB36#39 | 2 | 2 | 20.83 | 20.91 | 20.94 | 21.08 |

| | | | | | | | | |
|-----|---------|---------|---------|---|-------|-------|-------|-------|
| | | RB75#0 | 2 | 2 | 21.02 | 20.7 | 20.67 | 20.97 |
| 20M | QPSK | RB1#0 | 0 | 0 | 22.72 | 22.74 | 22.73 | 22.76 |
| | | RB1#49 | 0 | 0 | 22.99 | 22.83 | 22.79 | 23.06 |
| | | RB1#99 | 1 | 1 | 22.63 | 22.69 | 22.68 | 23.06 |
| | | RB50#0 | 1 | 1 | 22.72 | 22.76 | 22.88 | 22.53 |
| | | RB50#24 | 1 | 1 | 22.01 | 21.73 | 21.75 | 21.93 |
| | | RB50#50 | 1 | 1 | 21.86 | 21.74 | 21.84 | 21.92 |
| | | RB100#0 | 1 | 1 | 21.83 | 21.68 | 21.82 | 21.92 |
| | | 16-QAM | RB1#0 | 1 | 1 | 22.07 | 21.77 | 21.91 |
| | RB1#49 | | 1 | 1 | 22.06 | 22.05 | 22.04 | 22.29 |
| | RB1#99 | | 1 | 1 | 21.81 | 21.8 | 21.87 | 22.12 |
| | RB50#0 | | 2 | 2 | 20.98 | 20.9 | 20.86 | 20.89 |
| | RB50#24 | | 2 | 2 | 20.83 | 20.72 | 20.78 | 20.93 |
| | RB50#50 | | 2 | 2 | 20.9 | 20.77 | 20.79 | 20.99 |
| | | | RB100#0 | 2 | 2 | 20.86 | 20.79 | 20.76 |

Note: The Maximum Target Power for LTE bands corresponds to their maximum power in QPSK modes with maximum bandwidth.

WLAN 2.4G:

| Mode | Channel frequency (MHz) | Data Rate | Duty cycle (%) | RF Output Power (dBm) |
|--------------|-------------------------|-----------|----------------|-----------------------|
| 802.11b | 2412 | 1Mbps | 100 | 10.66 |
| | 2437 | | | 10.53 |
| | 2462 | | | 10.46 |
| 802.11g | 2412 | 6Mbps | 100 | 11.05 |
| | 2437 | | | 11.20 |
| | 2462 | | | 10.47 |
| 802.11n ht20 | 2412 | MCS0 | 100 | 10.90 |
| | 2437 | | | 11.22 |
| | 2462 | | | 10.23 |
| 802.11n ht40 | 2422 | MCS0 | 100 | 10.28 |
| | 2437 | | | 10.20 |
| | 2452 | | | 10.10 |

Wi-Fi 5.2G:

| Mode | Channel frequency (MHz) | Data Rate | Duty cycle (%) | RF Output Power (dBm) |
|------------|-------------------------|-----------|----------------|-----------------------|
| 802.11a | 5180 | 6Mbps | 100 | 6.69 |
| | 5200 | | | 6.74 |
| | 5240 | | | 7.13 |
| 802.11n20 | 5180 | MCS0 | 100 | 6.55 |
| | 5200 | | | 6.77 |
| | 5240 | | | 6.73 |
| 802.11n40 | 5190 | MCS0 | 100 | 6.94 |
| | 5230 | | | 6.82 |
| 802.11ac80 | 5210 | MCS0 | 100 | 6.61 |

Wi-Fi 5.3G:

| Mode | Channel frequency (MHz) | Data Rate | Duty cycle (%) | RF Output Power (dBm) |
|------------|-------------------------|-----------|----------------|-----------------------|
| 802.11a | 5260 | 6Mbps | 100 | 7.16 |
| | 5280 | | | 7.38 |
| | 5320 | | | 7.29 |
| 802.11n20 | 5260 | MCS0 | 100 | 6.98 |
| | 5280 | | | 6.97 |
| | 5320 | | | 6.94 |
| 802.11n40 | 5270 | MCS0 | 100 | 7.12 |
| | 5310 | | | 7.26 |
| 802.11ac80 | 5290 | MCS0 | 100 | 6.93 |

Wi-Fi 5.6G:

| Mode | Channel frequency (MHz) | Data Rate | Duty cycle (%) | RF Output Power (dBm) |
|------------|-------------------------|-----------|----------------|-----------------------|
| 802.11a | 5500 | 6Mbps | 100 | 7.07 |
| | 5580 | | | 6.78 |
| | 5700 | | | 6.84 |
| | 5720 | | | 7.10 |
| 802.11n20 | 5500 | MCS0 | 100 | 6.77 |
| | 5580 | | | 6.62 |
| | 5700 | | | 6.43 |
| | 5720 | | | 6.70 |
| 802.11n40 | 5510 | MCS0 | 100 | 6.75 |
| | 5590 | | | 6.87 |
| | 5670 | | | 6.47 |
| | 5710 | | | 6.73 |
| 802.11ac80 | 5530 | MCS0 | 100 | 6.62 |
| | 5610 | | | 6.78 |
| | 5690 | | | 6.60 |

Wi-Fi 5.8G:

| Mode | Channel frequency (MHz) | Data Rate | Duty cycle (%) | RF Output Power (dBm) |
|------------|-------------------------|-----------|----------------|-----------------------|
| 802.11a | 5745 | 6Mbps | 100 | 6.61 |
| | 5785 | | | 6.80 |
| | 5825 | | | 6.94 |
| 802.11n20 | 5745 | MCS0 | 100 | 6.38 |
| | 5785 | | | 6.70 |
| | 5825 | | | 6.83 |
| 802.11n40 | 5755 | MCS0 | 100 | 6.25 |
| | 5795 | | | 6.70 |
| 802.11ac80 | 5775 | MCS0 | 100 | 6.40 |

Bluetooth:

| Mode | Channel frequency (MHz) | RF Output Power (dBm) |
|----------------------|-------------------------|-----------------------|
| BDR(GFSK) | 2402 | 4.17 |
| | 2441 | 2.07 |
| | 2480 | 4.13 |
| EDR($\pi/4$ -DQPSK) | 2402 | 3.39 |
| | 2441 | 1.47 |
| | 2480 | 3.59 |
| EDR(8DPSK) | 2402 | 3.64 |
| | 2441 | 1.54 |
| | 2480 | 3.71 |
| BLE_1M | 2402 | 1.16 |
| | 2440 | 2.58 |
| | 2480 | 1.27 |
| BLE_2M | 2402 | 1.63 |
| | 2440 | 2.69 |
| | 2480 | 1.42 |

WWAN Reduction Power**GSM:**

| Band | Channel No. | Frequency (MHz) | RF Output Power (dBm) |
|----------|-------------|-----------------|-----------------------|
| GSM 850 | 128 | 824.2 | 24.80 |
| | 190 | 836.6 | 25.00 |
| | 251 | 848.8 | 24.94 |
| PCS 1900 | 512 | 1850.2 | 18.42 |
| | 661 | 1880 | 18.31 |
| | 810 | 1909.8 | 18.16 |

GPRS:

| Band | Channel No. | Frequency (MHz) | RF Output Power (dBm) | | | |
|----------|-------------|-----------------|-----------------------|---------|---------|---------|
| | | | 1 slot | 2 slots | 3 slots | 4 slots |
| GSM 850 | 128 | 824.2 | 24.77 | 24.82 | 24.98 | 24.95 |
| | 190 | 836.6 | 24.87 | 24.90 | 25.05 | 25.10 |
| | 251 | 848.8 | 25.02 | 24.90 | 25.06 | 24.96 |
| PCS 1900 | 512 | 1850.2 | 18.54 | 18.52 | 18.55 | 18.40 |
| | 661 | 1880 | 18.38 | 18.43 | 18.40 | 18.26 |
| | 810 | 1909.8 | 18.29 | 18.25 | 18.17 | 18.25 |

EGPRS:

| Band | Channel No. | Frequency (MHz) | RF Output Power (dBm) | | | |
|----------|-------------|-----------------|-----------------------|---------|---------|---------|
| | | | 1 slot | 2 slots | 3 slots | 4 slots |
| GSM 850 | 128 | 824.2 | 18.97 | 18.94 | 18.87 | 18.73 |
| | 190 | 836.6 | 19.07 | 19.01 | 18.99 | 19.03 |
| | 251 | 848.8 | 19.15 | 19.06 | 19.02 | 18.83 |
| PCS 1900 | 512 | 1850.2 | 15.55 | 15.45 | 15.39 | 15.25 |
| | 661 | 1880 | 15.48 | 15.26 | 15.26 | 15.10 |
| | 810 | 1909.8 | 15.43 | 15.37 | 15.18 | 15.23 |

For SAR, the time based average power is relevant, the difference in between depends on the duty cycle of the TDMA signal.

| Number of Time slot | 1 | 2 | 3 | 4 |
|--|-------|-------|----------|-------|
| Duty Cycle | 1:8 | 1:4 | 1:2.66 | 1:2 |
| Time based Ave. power compared to slotted Ave. power | -9 dB | -6 dB | -4.25 dB | -3 dB |
| Crest Factor | 8 | 4 | 2.66 | 2 |

The time based average power for GPRS

| Band | Channel No. | Frequency (MHz) | Time based average Power (dBm) | | | |
|----------|-------------|-----------------|--------------------------------|--------|---------|-------------|
| | | | 1 slot | 2 slot | 3 slots | 4 slots |
| GSM 850 | 128 | 824.2 | 15.77 | 18.82 | 20.73 | 21.95 |
| | 190 | 836.6 | 15.87 | 18.9 | 20.8 | 22.1 |
| | 251 | 848.8 | 16.02 | 18.9 | 20.81 | 21.96 |
| PCS 1900 | 512 | 1850.2 | 9.54 | 12.52 | 14.3 | 15.4 |
| | 661 | 1880 | 9.38 | 12.43 | 14.15 | 15.26 |
| | 810 | 1909.8 | 9.29 | 12.25 | 13.92 | 15.25 |

The time based average power for EGPRS

| Band | Channel No. | Frequency (MHz) | Time based average Power (dBm) | | | |
|----------|-------------|-----------------|--------------------------------|--------|---------|---------|
| | | | 1 slot | 2 slot | 3 slots | 4 slots |
| GSM 850 | 128 | 824.2 | 9.97 | 12.94 | 14.62 | 15.73 |
| | 190 | 836.6 | 10.07 | 13.01 | 14.74 | 16.03 |
| | 251 | 848.8 | 10.15 | 13.06 | 14.77 | 15.83 |
| PCS 1900 | 512 | 1850.2 | 6.55 | 9.45 | 11.14 | 12.25 |
| | 661 | 1880 | 6.48 | 9.26 | 11.01 | 12.1 |
| | 810 | 1909.8 | 6.43 | 9.37 | 10.93 | 12.23 |

Note:

1. Rohde & Schwarz Radio Communication Tester (CMU200) was used for the measurement of GSM peak and average output power for active timeslots.
2. For GPRS, 1, 2, 3 and 4 timeslots has been activated separately with power level 3(850 MHz band) and 3(1900 MHz band).

**WCDMA:
Results (12.2kbps RMC)**

| Band | Frequency (MHz) | RF Output Power (dBm) |
|--------------|-----------------|-----------------------|
| WCDMA Band 5 | 826.4 | 18.33 |
| | 836.6 | 17.21 |
| | 846.6 | 17.13 |

Results (HSDPA)

| Band | Frequency (MHz) | RF Output Power (dBm) | | | |
|--------------|-----------------|-----------------------|----------|----------|----------|
| | | Subset 1 | Subset 2 | Subset 3 | Subset 4 |
| WCDMA Band 5 | 826.4 | 16.99 | 17.47 | 17.35 | 17.35 |
| | 836.6 | 17.05 | 17.32 | 17.32 | 17.24 |
| | 846.6 | 16.90 | 17.46 | 17.39 | 17.27 |

Results (HSUPA)

| Band | Frequency (MHz) | RF Output Power (dBm) | | | | |
|--------------|-----------------|-----------------------|----------|----------|----------|----------|
| | | Subset 1 | Subset 2 | Subset 3 | Subset 4 | Subset 5 |
| WCDMA Band 5 | 826.4 | 17.72 | 17.68 | 17.81 | 17.63 | 17.78 |
| | 836.6 | 17.77 | 17.83 | 17.72 | 17.81 | 17.76 |
| | 846.6 | 17.63 | 17.76 | 17.77 | 17.72 | 17.78 |

Results (DC-HSDPA)

| Band | Frequency (MHz) | RF Output Power (dBm) | | | |
|--------------|-----------------|-----------------------|----------|----------|----------|
| | | Subset 1 | Subset 2 | Subset 3 | Subset 4 |
| WCDMA Band 5 | 826.4 | 17.71 | 17.71 | 17.73 | 17.71 |
| | 836.6 | 17.52 | 17.60 | 17.75 | 17.80 |
| | 846.6 | 17.47 | 17.47 | 17.58 | 17.74 |

Results (HSPA+)

| Band | Frequency (MHz) | RF Output Power (dBm) |
|--------------|-----------------|-----------------------|
| WCDMA Band 5 | 826.4 | 17.55 |
| | 836.6 | 17.69 |
| | 846.6 | 17.67 |

Note:

1. The default test configuration is to measure SAR with an established radio link between the EUT and a communication test set using a 12.2 kbps RMC (reference measurement Channel) Configured in Test Loop Model 1.
2. KDB 941225 D01-Body SAR is not required for HSDPA/HSUPA/DC-HSDPA/HSPA+ when the maximum average output of each RF channel is less than $\frac{1}{4}$ dB higher than measured 12.2kbps RMC or the maximum SAR for 12.2kbps RMC is $< 75\%$ of SAR limit.

LTE Band 5:

| Test Bandwidth | Test Modulation | Resource Block & RB offset | Target MPR | Meas MPR | Low Channel (dBm) | Middle Channel (dBm) | High Channel (dBm) |
|----------------|-----------------|----------------------------|------------|----------|-------------------|----------------------|--------------------|
| 1.4M | QPSK | RB1#0 | 0 | 0 | 19.26 | 18.85 | 19.27 |
| | | RB1#3 | 0 | 0 | 19.11 | 19.04 | 19.32 |
| | | RB1#5 | 0 | 0 | 18.89 | 18.84 | 19.19 |
| | | RB3#0 | 1 | 1 | 18.9 | 19.21 | 19.14 |
| | | RB3#1 | 1 | 1 | 19.17 | 19.19 | 19.06 |
| | | RB3#3 | 1 | 1 | 19.13 | 18.97 | 19.03 |
| | | RB6#0 | 1 | 1 | 18.07 | 17.99 | 18.17 |
| | 16-QAM | RB1#0 | 1 | 1 | 17.8 | 17.74 | 18.32 |
| | | RB1#3 | 1 | 1 | 18.08 | 17.99 | 17.94 |
| | | RB1#5 | 2 | 2 | 17.81 | 17.91 | 17.93 |
| | | RB3#0 | 2 | 2 | 18.17 | 18.07 | 18.06 |
| | | RB3#1 | 2 | 2 | 18.32 | 18.07 | 18.14 |
| | | RB3#3 | 2 | 2 | 18.11 | 18.02 | 18.11 |
| | | RB6#0 | 2 | 2 | 17.35 | 17.28 | 16.99 |
| 3M | QPSK | RB1#0 | 0 | 0 | 18.95 | 18.95 | 19.33 |
| | | RB1#8 | 0 | 0 | 19.04 | 18.98 | 19.13 |
| | | RB1#14 | 0 | 0 | 19 | 19.05 | 19.07 |
| | | RB8#0 | 1 | 1 | 18.04 | 18.12 | 17.99 |
| | | RB8#4 | 1 | 1 | 18.2 | 18.07 | 17.94 |
| | | RB8#7 | 1 | 1 | 18.16 | 18.02 | 18.12 |
| | | RB15#0 | 1 | 1 | 18.13 | 18.09 | 18.16 |
| | 16-QAM | RB1#0 | 1 | 1 | 17.93 | 18.03 | 18.31 |
| | | RB1#8 | 1 | 1 | 17.98 | 17.79 | 18.52 |
| | | RB1#14 | 1 | 1 | 17.83 | 17.95 | 18.47 |
| | | RB8#0 | 2 | 2 | 16.94 | 17.26 | 17.15 |
| | | RB8#4 | 1 | 1 | 16.96 | 17.08 | 17.27 |
| | | RB8#7 | 2 | 2 | 17.08 | 17.29 | 17.23 |
| | | RB15#0 | 2 | 2 | 17.21 | 17.14 | 17.32 |
| 5M | QPSK | RB1#0 | 0 | 0 | 18.94 | 19.09 | 18.89 |
| | | RB1#12 | 0 | 0 | 19.14 | 19.14 | 19.06 |
| | | RB1#24 | 0 | 0 | 19.02 | 18.96 | 18.76 |
| | | RB12#0 | 1 | 1 | 18.12 | 18.08 | 17.92 |
| | | RB12#13 | 1 | 1 | 17.99 | 18.1 | 18.14 |
| | | RB12#7 | 1 | 1 | 18.13 | 18.07 | 18.11 |
| | | RB25#0 | 1 | 1 | 18.13 | 18.08 | 18.19 |
| | 16-QAM | RB1#0 | 1 | 1 | 18.01 | 18.07 | 18.56 |
| | | RB1#12 | 1 | 1 | 18.11 | 18.18 | 18.71 |
| | | RB1#24 | 1 | 1 | 17.99 | 18.01 | 18.63 |
| | | RB12#0 | 2 | 2 | 17.19 | 17.12 | 17.26 |
| RB12#13 | 2 | 2 | 17.19 | 17.08 | 17.16 | | |

| | | | | | | | |
|-----|---------|---------|--------|---|-------|-------|--------------|
| | | RB12#7 | 2 | 2 | 17.3 | 17.23 | 17.16 |
| | | RB25#0 | 2 | 2 | 17.11 | 17.12 | 17.34 |
| 10M | QPSK | RB1#0 | 0 | 0 | 18.94 | 19.02 | 19.1 |
| | | RB1#25 | 0 | 0 | 19.11 | 19.35 | 19.36 |
| | | RB1#49 | 1 | 1 | 18.82 | 18.97 | 19.13 |
| | | RB25#0 | 1 | 1 | 18.27 | 18.01 | 18.13 |
| | | RB25#12 | 1 | 1 | 19.04 | 19.24 | 19.07 |
| | | RB25#25 | 1 | 1 | 18.25 | 18.14 | 18.04 |
| | | RB50#0 | 1 | 1 | 18.29 | 18.16 | 18.01 |
| | | 16-QAM | RB1#0 | 1 | 1 | 17.77 | 17.86 |
| | RB1#25 | | 1 | 1 | 17.99 | 18.11 | 18.56 |
| | RB1#49 | | 1 | 1 | 17.73 | 18.06 | 18.3 |
| | RB25#0 | | 2 | 2 | 17.28 | 17.18 | 17.23 |
| | RB25#12 | | 2 | 2 | 17.19 | 17.1 | 17.23 |
| | RB25#25 | | 2 | 2 | 17.22 | 17.27 | 17.09 |
| | | | RB50#0 | 2 | 2 | 17.26 | 17.04 |

LTE Band 7:

| Test Bandwidth | Test Modulation | Resource Block & RB offset | Target MPR | Meas MPR | Low Channel (dBm) | Middle Channel (dBm) | High Channel (dBm) |
|----------------|-----------------|----------------------------|------------|----------|-------------------|----------------------|--------------------|
| 5M | QPSK | RB1#0 | 0 | 0 | 10.21 | 10.12 | 9.98 |
| | | RB1#12 | 0 | 0 | 10.61 | 10.53 | 10.25 |
| | | RB1#24 | 0 | 0 | 10.22 | 10.17 | 9.92 |
| | | RB12#0 | 1 | 1 | 10.41 | 10.2 | 10.03 |
| | | RB12#13 | 1 | 1 | 10.43 | 10.32 | 10.1 |
| | | RB12#7 | 1 | 1 | 10.57 | 10.36 | 10.2 |
| | | RB25#0 | 1 | 1 | 10.51 | 10.21 | 9.99 |
| | 16-QAM | RB1#0 | 1 | 1 | 10.43 | 10.35 | 10.58 |
| | | RB1#12 | 2 | 2 | 10.65 | 10.46 | 10.89 |
| | | RB1#24 | 2 | 2 | 10.28 | 10.25 | 10.66 |
| | | RB12#0 | 2 | 2 | 10.56 | 10.23 | 10.09 |
| | | RB12#13 | 2 | 2 | 10.39 | 10.43 | 10.2 |
| | | RB12#7 | 0 | 0 | 10.67 | 10.41 | 10.24 |
| | | RB25#0 | 0 | 0 | 10.47 | 10.26 | 10.21 |
| 10M | QPSK | RB1#0 | 1 | 1 | 10.34 | 10.36 | 10.29 |
| | | RB1#25 | 1 | 1 | 10.3 | 10.28 | 10.37 |
| | | RB1#49 | 1 | 1 | 10.23 | 10.23 | 10.15 |
| | | RB25#0 | 1 | 1 | 10.37 | 10.23 | 10.13 |
| | | RB25#12 | 1 | 1 | 10.33 | 10.33 | 10.01 |
| | | RB25#25 | 1 | 1 | 10.46 | 10.24 | 10.16 |
| | | RB50#0 | 2 | 2 | 10.45 | 10.31 | 10.1 |
| | 16-QAM | RB1#0 | 2 | 2 | 10.21 | 10.28 | 10.52 |
| | | RB1#25 | 2 | 2 | 10.47 | 10.26 | 10.52 |
| | | RB1#49 | 2 | 2 | 10.14 | 10.3 | 10.5 |
| | | RB25#0 | 0 | 0 | 10.55 | 10.51 | 10.23 |
| | | RB25#12 | 0 | 0 | 10.6 | 10.53 | 10.07 |
| | | RB25#25 | 1 | 1 | 10.68 | 10.55 | 10.18 |
| | | RB50#0 | 1 | 1 | 10.43 | 10.42 | 10.16 |
| 15M | QPSK | RB1#0 | 1 | 1 | 10.31 | 10.27 | 10.21 |
| | | RB1#37 | 1 | 1 | 10.49 | 10.43 | 10.42 |
| | | RB1#74 | 1 | 1 | 10.24 | 10.06 | 10.19 |
| | | RB36#0 | 1 | 1 | 10.41 | 10.37 | 10.07 |
| | | RB36#20 | 2 | 2 | 10.41 | 10.44 | 10.24 |
| | | RB36#39 | 2 | 2 | 10.36 | 10.36 | 10.11 |
| | | RB75#0 | 2 | 2 | 10.29 | 10.29 | 10.05 |
| | 16-QAM | RB1#0 | 1 | 1 | 10.36 | 10.21 | 10.39 |
| | | RB1#37 | 1 | 1 | 10.58 | 10.37 | 10.53 |
| | | RB1#74 | 1 | 1 | 10.41 | 10.15 | 10.44 |
| | | RB36#0 | 1 | 1 | 10.45 | 10.38 | 10.28 |
| | | RB36#20 | 2 | 2 | 10.37 | 10.47 | 10.13 |

| | | | | | | | |
|-----|--------|---------|---|---|-------|--------------|-------|
| | | RB36#39 | 2 | 2 | 10.4 | 10.37 | 10.1 |
| | | RB75#0 | 2 | 2 | 10.33 | 10.29 | 10.18 |
| 20M | QPSK | RB1#0 | 0 | 0 | 10.16 | 10.01 | 9.9 |
| | | RB1#49 | 0 | 0 | 10.29 | 10.27 | 10.12 |
| | | RB1#99 | 1 | 1 | 9.87 | 10.06 | 9.81 |
| | | RB50#0 | 1 | 1 | 10.32 | 10.31 | 10.18 |
| | | RB50#24 | 1 | 1 | 10.39 | 10.28 | 10.25 |
| | | RB50#50 | 1 | 1 | 10.41 | 10.39 | 10.11 |
| | | RB100#0 | 1 | 1 | 10.36 | 10.28 | 10.03 |
| | | RB1#0 | 1 | 1 | 10.55 | 10.83 | 10.23 |
| | 16-QAM | RB1#49 | 2 | 2 | 10.76 | 10.96 | 10.61 |
| | | RB1#99 | 2 | 2 | 10.41 | 10.7 | 10.26 |
| | | RB50#0 | 2 | 2 | 10.52 | 10.41 | 10.11 |
| | | RB50#24 | 2 | 2 | 10.35 | 10.51 | 10.15 |
| | | RB50#50 | 0 | 0 | 10.35 | 10.38 | 10.19 |
| | | RB100#0 | 0 | 0 | 10.51 | 10.31 | 10.08 |

LTE Band 38:

| Test Bandwidth | Test Modulation | Resource Block & RB offset | Target MPR | Meas MPR | Low Channel (dBm) | Middle Channel (dBm) | High Channel (dBm) |
|----------------|-----------------|----------------------------|------------|----------|-------------------|----------------------|--------------------|
| 5M | QPSK | RB1#0 | 0 | 0 | 16 | 15.97 | 15.9 |
| | | RB1#12 | 0 | 0 | 16.31 | 16.31 | 16.26 |
| | | RB1#24 | 0 | 0 | 16.02 | 15.9 | 15.93 |
| | | RB12#0 | 1 | 1 | 15.97 | 15.93 | 15.83 |
| | | RB12#13 | 1 | 1 | 15.95 | 15.87 | 15.98 |
| | | RB12#7 | 1 | 1 | 16.03 | 15.94 | 15.94 |
| | | RB25#0 | 1 | 1 | 15.79 | 15.97 | 15.95 |
| | 16-QAM | RB1#0 | 1 | 1 | 16.12 | 16.31 | 16.12 |
| | | RB1#12 | 1 | 1 | 16.5 | 16.6 | 16.47 |
| | | RB1#24 | 2 | 2 | 16.11 | 16.36 | 16.15 |
| | | RB12#0 | 2 | 2 | 15.83 | 16.01 | 15.87 |
| | | RB12#13 | 2 | 2 | 15.95 | 15.95 | 15.95 |
| | | RB12#7 | 2 | 2 | 15.86 | 15.98 | 16.11 |
| | | RB25#0 | 2 | 2 | 16.01 | 15.93 | 15.91 |
| 10M | QPSK | RB1#0 | 0 | 0 | 15.99 | 15.9 | 15.89 |
| | | RB1#25 | 0 | 0 | 16.38 | 16.17 | 16.29 |
| | | RB1#49 | 1 | 1 | 15.95 | 15.72 | 15.99 |
| | | RB25#0 | 1 | 1 | 16.03 | 16.09 | 15.84 |
| | | RB25#12 | 1 | 1 | 15.99 | 16.1 | 15.95 |
| | | RB25#25 | 1 | 1 | 15.94 | 16 | 15.87 |
| | | RB50#0 | 1 | 1 | 16.06 | 16.05 | 15.9 |
| | 16-QAM | RB1#0 | 1 | 1 | 16.05 | 16.08 | 16.37 |
| | | RB1#25 | 1 | 1 | 16.42 | 16.45 | 16.58 |
| | | RB1#49 | 2 | 2 | 16.11 | 15.97 | 16.22 |
| | | RB25#0 | 2 | 2 | 16.01 | 15.88 | 15.99 |
| | | RB25#12 | 2 | 2 | 15.92 | 15.88 | 15.93 |
| | | RB25#25 | 2 | 2 | 16.01 | 15.84 | 16.04 |
| | | RB50#0 | 2 | 2 | 15.94 | 15.87 | 15.91 |
| 15M | QPSK | RB1#0 | 0 | 0 | 15.95 | 15.67 | 15.78 |
| | | RB1#37 | 0 | 0 | 16.13 | 16.04 | 16.08 |
| | | RB1#74 | 1 | 1 | 15.82 | 15.62 | 15.84 |
| | | RB36#0 | 1 | 1 | 16.01 | 15.92 | 16.02 |
| | | RB36#20 | 1 | 1 | 16.08 | 16.07 | 16 |
| | | RB36#39 | 1 | 1 | 15.84 | 16.02 | 15.99 |
| | | RB75#0 | 1 | 1 | 15.91 | 16 | 15.92 |
| | 16-QAM | RB1#0 | 1 | 1 | 16.21 | 16.03 | 16.24 |
| | | RB1#37 | 1 | 1 | 16.57 | 16.21 | 16.55 |
| | | RB1#74 | 2 | 2 | 16.3 | 16.04 | 16.36 |
| | | RB36#0 | 2 | 2 | 16.05 | 16.03 | 15.81 |
| | | RB36#20 | 2 | 2 | 16.06 | 16 | 15.9 |

| | | | | | | | |
|-----|---------|---------|---------|---|-------|-------|-------|
| | | RB36#39 | 2 | 2 | 15.99 | 16.06 | 15.87 |
| | | RB75#0 | 2 | 2 | 15.95 | 16.04 | 16 |
| 20M | QPSK | RB1#0 | 0 | 0 | 15.75 | 15.81 | 15.71 |
| | | RB1#49 | 0 | 0 | 16.09 | 16.25 | 16.05 |
| | | RB1#99 | 1 | 1 | 15.82 | 15.79 | 15.74 |
| | | RB50#0 | 1 | 1 | 16.01 | 15.87 | 16.02 |
| | | RB50#24 | 1 | 1 | 15.99 | 15.96 | 15.96 |
| | | RB50#50 | 1 | 1 | 15.89 | 15.96 | 15.89 |
| | | RB100#0 | 1 | 1 | 16.01 | 15.84 | 15.95 |
| | | 16-QAM | RB1#0 | 1 | 1 | 15.98 | 15.94 |
| | RB1#49 | | 2 | 2 | 16.18 | 16.29 | 16.11 |
| | RB1#99 | | 2 | 2 | 15.89 | 15.94 | 16.03 |
| | RB50#0 | | 2 | 2 | 15.98 | 16.1 | 15.88 |
| | RB50#24 | | 2 | 2 | 15.92 | 16.08 | 15.96 |
| | RB50#50 | | 0 | 0 | 15.91 | 15.98 | 16.05 |
| | | | RB100#0 | 0 | 0 | 15.84 | 15.86 |

LTE Band 41:

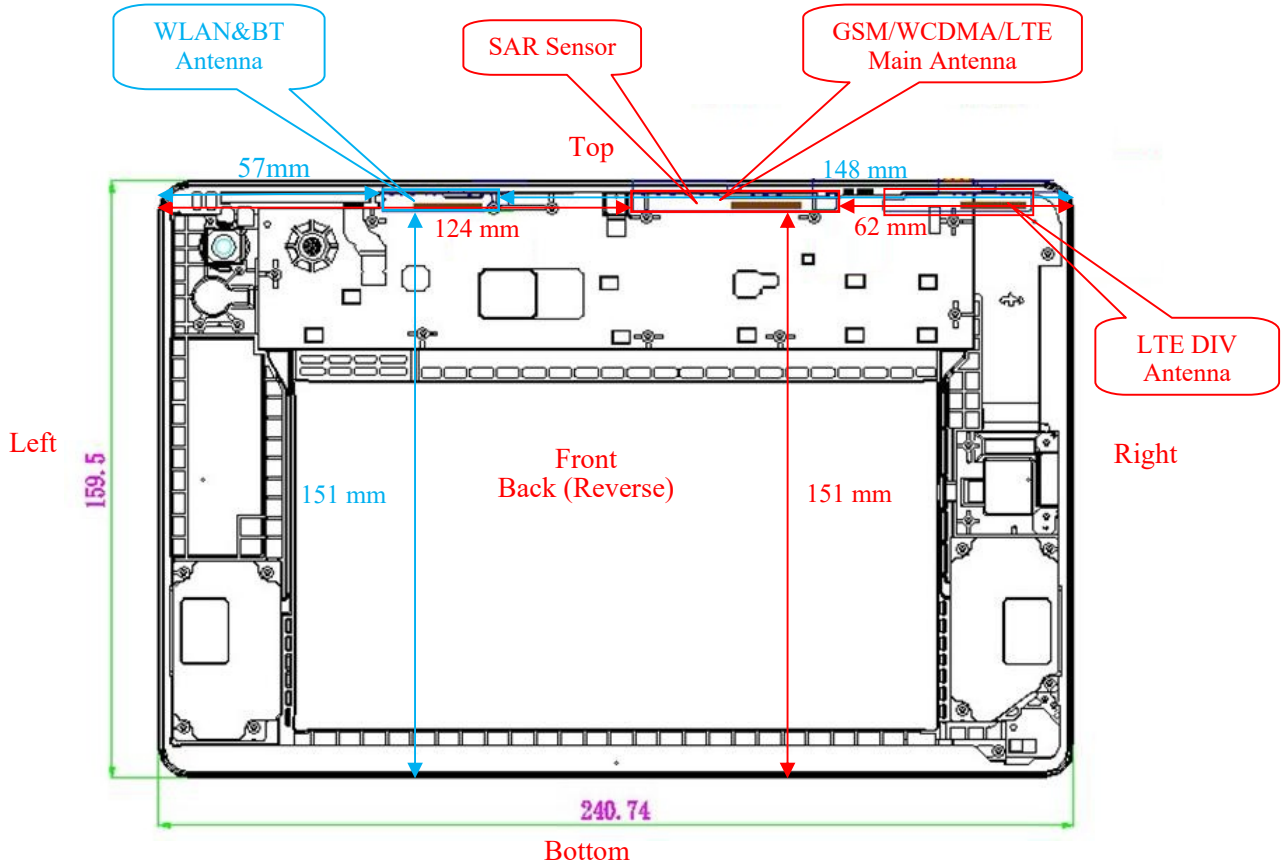
| Test Bandwidth | Test Modulation | Resource Block & RB offset | Target MPR | Meas MPR | Low Channel (dBm) | Middle Channel (dBm) | 2619MHz (dBm) | High Channel (dBm) |
|----------------|-----------------|----------------------------|------------|----------|-------------------|----------------------|---------------|--------------------|
| 5M | QPSK | RB1#0 | 0 | 0 | 16.42 | 16.07 | 16.11 | 16.58 |
| | | RB1#12 | 0 | 0 | 16.61 | 16.37 | 16.36 | 16.85 |
| | | RB1#24 | 0 | 0 | 16.37 | 16.03 | 16.05 | 16.58 |
| | | RB12#0 | 1 | 1 | 16.22 | 16.23 | 16.24 | 16.32 |
| | | RB12#13 | 1 | 1 | 16.45 | 16.19 | 16.22 | 16.51 |
| | | RB12#7 | 1 | 1 | 16.45 | 16.2 | 16.24 | 16.62 |
| | | RB25#0 | 1 | 1 | 16.21 | 16.07 | 16.18 | 16.47 |
| | 16-QAM | RB1#0 | 1 | 1 | 16.82 | 16.38 | 16.47 | 16.62 |
| | | RB1#12 | 1 | 1 | 16.97 | 16.55 | 16.59 | 17.01 |
| | | RB1#24 | 2 | 2 | 16.72 | 16.25 | 16.35 | 16.76 |
| | | RB12#0 | 2 | 2 | 16.43 | 16.21 | 16.32 | 16.32 |
| | | RB12#13 | 2 | 2 | 16.45 | 16.22 | 16.18 | 16.5 |
| | | RB12#7 | 2 | 2 | 16.63 | 16.21 | 16.2 | 16.56 |
| | | RB25#0 | 2 | 2 | 16.33 | 16.09 | 16.19 | 16.46 |
| 10M | QPSK | RB1#0 | 0 | 0 | 16.38 | 16.29 | 16.37 | 16.2 |
| | | RB1#25 | 0 | 0 | 16.67 | 16.59 | 16.71 | 16.67 |
| | | RB1#49 | 1 | 1 | 16.34 | 16.24 | 16.36 | 16.39 |
| | | RB25#0 | 1 | 1 | 16.32 | 16.12 | 16.23 | 16.37 |
| | | RB25#12 | 1 | 1 | 16.49 | 16.15 | 16.13 | 16.43 |
| | | RB25#25 | 1 | 1 | 16.33 | 16.27 | 16.26 | 16.33 |
| | | RB50#0 | 1 | 1 | 16.47 | 16.23 | 16.28 | 16.34 |
| | 16-QAM | RB1#0 | 1 | 1 | 16.82 | 16.51 | 16.51 | 16.61 |
| | | RB1#25 | 1 | 1 | 17.12 | 16.78 | 16.89 | 16.82 |
| | | RB1#49 | 2 | 2 | 16.74 | 16.41 | 16.43 | 16.54 |
| | | RB25#0 | 2 | 2 | 16.47 | 16.15 | 16.19 | 16.26 |
| | | RB25#12 | 2 | 2 | 16.37 | 16.17 | 16.26 | 16.46 |
| | | RB25#25 | 2 | 2 | 16.4 | 16.21 | 16.35 | 16.31 |
| | | RB50#0 | 2 | 2 | 16.42 | 16.24 | 16.29 | 16.38 |
| 15M | QPSK | RB1#0 | 0 | 0 | 16.41 | 16.31 | 16.31 | 16.07 |
| | | RB1#37 | 0 | 0 | 16.57 | 16.4 | 16.4 | 16.42 |
| | | RB1#74 | 1 | 1 | 16.28 | 16.16 | 16.11 | 16.23 |
| | | RB36#0 | 1 | 1 | 16.29 | 16.26 | 16.3 | 16.43 |
| | | RB36#20 | 1 | 1 | 16.38 | 16.19 | 16.26 | 16.47 |
| | | RB36#39 | 1 | 1 | 16.37 | 16.19 | 16.31 | 16.53 |
| | | RB75#0 | 1 | 1 | 16.34 | 16.21 | 16.3 | 16.37 |
| | 16-QAM | RB1#0 | 1 | 1 | 16.73 | 16.52 | 16.49 | 16.38 |
| | | RB1#37 | 1 | 1 | 16.97 | 16.87 | 16.96 | 16.72 |
| | | RB1#74 | 2 | 2 | 16.56 | 16.45 | 16.44 | 16.58 |
| | | RB36#0 | 2 | 2 | 16.24 | 16.35 | 16.43 | 16.33 |
| | | RB36#20 | 2 | 2 | 16.3 | 16.26 | 16.35 | 16.42 |

| | | | | | | | | |
|-----|---------|---------|---------|---|-------|-------|-------|-------|
| | | RB36#39 | 2 | 2 | 16.33 | 16.29 | 16.32 | 16.65 |
| | | RB75#0 | 2 | 2 | 16.48 | 16.12 | 16.13 | 16.43 |
| 20M | QPSK | RB1#0 | 0 | 0 | 16.2 | 16.18 | 16.31 | 16.25 |
| | | RB1#49 | 0 | 0 | 16.28 | 16.29 | 16.26 | 16.58 |
| | | RB1#99 | 1 | 1 | 16.12 | 16.02 | 16.06 | 16.37 |
| | | RB50#0 | 1 | 1 | 16.38 | 16.21 | 16.21 | 16.26 |
| | | RB50#24 | 1 | 1 | 16.3 | 16.19 | 16.28 | 16.23 |
| | | RB50#50 | 1 | 1 | 16.36 | 16.24 | 16.27 | 16.45 |
| | | RB100#0 | 1 | 1 | 16.42 | 16.19 | 16.18 | 16.33 |
| | | 16-QAM | RB1#0 | 1 | 1 | 16.47 | 16.27 | 16.29 |
| | RB1#49 | | 1 | 1 | 16.63 | 16.46 | 16.56 | 16.66 |
| | RB1#99 | | 1 | 1 | 16.39 | 16.16 | 16.16 | 16.51 |
| | RB50#0 | | 2 | 2 | 16.29 | 16.28 | 16.27 | 16.3 |
| | RB50#24 | | 2 | 2 | 16.4 | 16.28 | 16.23 | 16.35 |
| | RB50#50 | | 2 | 2 | 16.38 | 16.31 | 16.32 | 16.29 |
| | | | RB100#0 | 2 | 2 | 16.44 | 16.25 | 16.27 |

Note: The Maximum Target Power for LTE bands corresponds to their maximum power in QPSK modes with maximum bandwidth.

7. Standalone SAR test exclusion considerations

Antennas Location:



Note: The LTE DIV antenna can not transmit, and is receiving only.

7.1 Antenna Distance To Edge

| Antenna Distance To Edge(mm) | | | | | | |
|------------------------------|-------|------|------|-------|-----|--------|
| Antenna | Front | Back | Left | Right | Top | Bottom |
| WWAN Antenna(GSM/WCDMA/LTE) | < 5 | < 5 | 124 | 62 | < 5 | 151 |
| WLAN & BT Antenna | < 5 | < 5 | 57 | 148 | < 5 | 151 |

7.2 Standalone SAR test exclusion considerations

| Mode | Frequency (MHz) | Output Power (dBm) | Output Power (mW) | Distance (mm) | Calculated value | Threshold (1-g) | SAR Test Exclusion |
|------------|-----------------|--------------------|-------------------|---------------|------------------|-----------------|--------------------|
| Wi-Fi 2.4G | 2462 | 11.5 | 14.1 | 0 | 4.4 | 3 | No |
| WLAN 5.2G | 5240 | 7.5 | 5.6 | 0 | 2.6 | 3 | YES |
| WLAN 5.3G | 5320 | 7.5 | 5.6 | 0 | 2.6 | 3 | YES |
| WLAN 5.6G | 5700 | 7.5 | 5.6 | 0 | 2.7 | 3 | YES |
| WLAN 5.8G | 5825 | 7 | 5.0 | 0 | 2.4 | 3 | YES |

| | | | | | | | |
|-----------|------|-----|-----|---|-----|---|-----|
| Bluetooth | 2480 | 4.5 | 2.8 | 0 | 0.9 | 3 | YES |
|-----------|------|-----|-----|---|-----|---|-----|

Note: The bluetooth based peak power for calculation, and Wi-Fi based average power for calculation.

NOTE:

The 1-g and 10-g SAR test exclusion thresholds for 100 MHz to 6 GHz at test separation distances ≤ 50 mm are determined by:

$[(\text{max. power of channel, including tune-up tolerance, mW}) / (\text{min. test separation distance, mm})] \cdot$

$[\sqrt{f(\text{GHz})}] \leq 3.0$ for 1-g SAR and ≤ 7.5 for 10-g extremity SAR, where

1. $f(\text{GHz})$ is the RF channel transmit frequency in GHz.

2. Power and distance are rounded to the nearest mW and mm before calculation.

3. The result is rounded to one decimal place for comparison.

4. When the minimum test separation distance is < 5 mm, a distance of 5 mm is applied to determine SAR test Exclusion.

7.3 Standalone SAR estimation:

| Mode | Frequency (MHz) | Output Power (dBm) | Output Power (mW) | Distance (mm) | Estimated 1-g (W/kg) |
|----------------|-----------------|--------------------|-------------------|---------------|----------------------|
| WLAN 5.2G Body | 5240 | 7.5 | 5.6 | 0 | 0.34 |
| WLAN 5.2G Body | 5240 | 7.5 | 5.6 | 14 | 0.12 |
| WLAN 5.3G Body | 5320 | 7.5 | 5.6 | 0 | 0.34 |
| WLAN 5.3G Body | 5320 | 7.5 | 5.6 | 14 | 0.12 |
| WLAN 5.6G Body | 5700 | 7.5 | 5.6 | 0 | 0.36 |
| WLAN 5.6G Body | 5700 | 7.5 | 5.6 | 14 | 0.13 |
| WLAN 5.8G Body | 5825 | 7 | 5.0 | 0 | 0.32 |
| WLAN 5.8G Body | 5825 | 7 | 5.0 | 14 | 0.11 |
| BT Body | 2480 | 4.5 | 2.8 | 0 | 0.12 |
| BT Body | 2480 | 4.5 | 2.8 | 14 | 0.04 |

Note: The bluetooth based peak power for calculation, and Wi-Fi based average power for calculation.

When standalone SAR test exclusion applies to an antenna that transmits simultaneously with other antennas, the standalone SAR must be estimated according to following to determine simultaneous transmission SAR test exclusion:

$[(\text{max. power of channel, including tune-up tolerance, mW}) / (\text{min. test separation distance, mm})] \cdot$
 $[\sqrt{f(\text{GHz})/x}]$

W/kg for test separation distances ≤ 50 mm;

where $x = 7.5$ for 1-g SAR.

When the minimum test separation distance is < 5 mm, a distance of 5 mm is applied to determine SAR test Exclusion.

7.4 Standalone SAR test exclusion considerations:**Full Power:**

| Mode | Frequency (MHz) | Target Power (dBm) | Target Power (mW) | Test exclusion Threshold (mm) |
|--------------|-----------------|--------------------|-------------------|-------------------------------|
| GSM 850 | 848.8 | 26.5 | 446.7 | 100.1 |
| PCS1900 | 1909.8 | 24 | 251.2 | 64.2 |
| WCDMA Band 5 | 846.6 | 23.5 | 223.9 | 60.7 |
| LTE Band 5 | 844 | 24.5 | 281.8 | 71 |
| LTE Band 7 | 2560 | 23.5 | 223.9 | 63 |
| LTE Band 38 | 2610 | 23.5 | 223.9 | 63.1 |
| LTE Band 41 | 2645 | 23.5 | 223.9 | 63.1 |
| WLAN 2.4G | 2462 | 11.5 | 14.1 | 7.3 |

Note: The maximum time based average power is used for calculation.

Reduction power:

| Mode | Frequency (MHz) | Target Power (dBm) | Target Power (mW) | Test exclusion Threshold (mm) |
|--------------|-----------------|--------------------|-------------------|-------------------------------|
| GSM 850 | 848.8 | 22.5 | 177.8 | 52.6 |
| PCS1900 | 1909.8 | 16 | 39.8 | 18.3 |
| WCDMA Band 5 | 846.6 | 18.5 | 70.8 | 21.7 |
| LTE Band 5 | 844 | 19.5 | 89.1 | 27.2 |
| LTE Band 7 | 2560 | 11 | 12.6 | 6.7 |
| LTE Band 38 | 2610 | 17.5 | 56.2 | 30.2 |
| LTE Band 41 | 2645 | 17.5 | 56.2 | 30.4 |

Note: The maximum time based average power is used for calculation.

7.5 SAR test exclusion for the EUT edge considerations Result**Full Power:**

| Mode | Front Edge | Back Edge | Left Edge | Right Edge | Top Edge | Bottom Edge |
|--------------|-------------|-----------------|------------|-----------------|-----------------|-------------|
| GSM 850 | Exclusion** | Required | Exclusion | Required | Required | Exclusion |
| PCS1900 | Exclusion** | Required | Exclusion | Required | Required | Exclusion |
| WCDMA Band 5 | Exclusion** | Required | Exclusion | Exclusion | Required | Exclusion |
| LTE Band 5 | Exclusion** | Required | Exclusion | Required | Required | Exclusion |
| LTE Band 7 | Exclusion** | Required | Exclusion | Required | Required | Exclusion |
| LTE Band 38 | Exclusion** | Required | Exclusion | Required | Required | Exclusion |
| LTE Band 41 | Exclusion** | Required | Exclusion | Required | Required | Exclusion |
| WLAN 2.4G | Exclusion** | Required | Exclusion | Exclusion | Required | Exclusion |
| WLAN 5.2G | Exclusion* | Exclusion* | Exclusion* | Exclusion* | Exclusion* | Exclusion* |

| | | | | | | |
|-----------|------------|------------|------------|------------|------------|------------|
| WLAN 5.3G | Exclusion* | Exclusion* | Exclusion* | Exclusion* | Exclusion* | Exclusion* |
| WLAN 5.6G | Exclusion* | Exclusion* | Exclusion* | Exclusion* | Exclusion* | Exclusion* |
| WLAN 5.8G | Exclusion* | Exclusion* | Exclusion* | Exclusion* | Exclusion* | Exclusion* |
| Bluetooth | Exclusion* | Exclusion* | Exclusion* | Exclusion* | Exclusion* | Exclusion* |

Reduction power:

| Mode | Front Edge | Back Edge | Left Edge | Right Edge | Top Edge | Bottom Edge |
|--------------|-------------|-----------|-----------|------------|----------|-------------|
| GSM 850 | Exclusion** | Required | Exclusion | Exclusion | Required | Exclusion |
| PCS1900 | Exclusion** | Required | Exclusion | Exclusion | Required | Exclusion |
| WCDMA Band 5 | Exclusion** | Required | Exclusion | Exclusion | Required | Exclusion |
| LTE Band 5 | Exclusion** | Required | Exclusion | Exclusion | Required | Exclusion |
| LTE Band 7 | Exclusion** | Required | Exclusion | Exclusion | Required | Exclusion |
| LTE Band 38 | Exclusion** | Required | Exclusion | Exclusion | Required | Exclusion |
| LTE Band 41 | Exclusion** | Required | Exclusion | Exclusion | Required | Exclusion |

Note:

Required: The distance is less than **Test Exclusion Distance**, the SAR test is required.

Exclusion: The distance is large than **Test Exclusion Distance**, SAR test is not required.

Exclusion**: Per KDB 616217 D04 SAR for laptop and tablets , SAR evaluation for the front surface of tablet display screens are generally not necessary.

SAR test exclusion for the EUT edge considerations detail:**Distance < 50mm (To Edges)**

The 1-g and 10-g SAR test exclusion thresholds for 100 MHz to 6 GHz at test separation distances ≤ 50 mm are determined by:

$[(\text{max. power of channel, including tune-up tolerance, mW}) / (\text{min. test separation distance, mm})] \cdot$

$[\sqrt{f(\text{GHz})}] \leq 3.0$ for 1-g SAR and ≤ 7.5 for 10-g extremity SAR, where

1. $f(\text{GHz})$ is the RF channel transmit frequency in GHz.

2. Power and distance are rounded to the nearest mW and mm before calculation.

3. The result is rounded to one decimal place for comparison.

4. When the minimum test separation distance is < 5 mm, a distance of 5 mm is applied to determine SAR test Exclusion.

5. The Time based average Power is used for calculation

Distance > 50mm (To Edges)

At 100 MHz to 6 GHz and for *test separation distances* > 50 mm, the SAR test exclusion threshold is determined according to the following:

a) $[\text{Power allowed at numeric threshold for 50 mm in step 1}) + (\text{test separation distance} - 50 \text{ mm}) \cdot (f(\text{MHz})/150)]$ mW, at 100 MHz to 1500 MHz

b) $[\text{Power allowed at numeric threshold for 50 mm in step 1}) + (\text{test separation distance} - 50 \text{ mm}) \cdot 10]$ mW at > 1500 MHz and ≤ 6 GHz

8. SAR MEASUREMENT RESULTS

This page summarizes the results of the performed dosimetric evaluation.

8.1 SAR Test Data

Environmental Conditions

| | | |
|---------------------------|--------------|--------------|
| Temperature: | 21.9-22.7 °C | 22.1-22.8 °C |
| Relative Humidity: | 39 % | 46 % |
| ATM Pressure: | 100.8 kPa | 100.2 kPa |
| Test Date: | 2024/06/16 | 2024/06/17 |

Testing was performed by Wen Chen, Leo Lu, Aixlee Li, Ken Zong.

GSM 850_SAR Sensor off:

| EUT Position | Frequency (MHz) | Test Mode | Max. Meas. Power (dBm) | Max. Rated Power (dBm) | 1g SAR (W/kg) | | | |
|-----------------------|-----------------|-----------|------------------------|------------------------|---------------|-----------|-------------|------|
| | | | | | Scaled Factor | Meas. SAR | Scaled SAR | Plot |
| Body Worn Back (14mm) | 824.2 | GSM | / | / | / | / | / | / |
| | 836.6 | GSM | 32.82 | 33 | 1.042 | 0.194 | 0.20 | 1# |
| | 848.8 | GSM | / | / | / | / | / | / |
| Body Back (14mm) | 824.2 | GPRS | / | / | / | / | / | / |
| | 836.6 | GPRS | 29.10 | 29.5 | 1.096 | 0.309 | 0.34 | 2# |
| | 848.8 | GPRS | / | / | / | / | / | / |
| Body Right (14mm) | 824.2 | GPRS | / | / | / | / | / | / |
| | 836.6 | GPRS | 29.10 | 29.5 | 1.096 | <0.01 | 0.01 | / |
| | 848.8 | GPRS | / | / | / | / | / | / |
| Body Top (14mm) | 824.2 | GPRS | / | / | / | / | / | / |
| | 836.6 | GPRS | 29.10 | 29.5 | 1.096 | 0.201 | 0.22 | 3# |
| | 848.8 | GPRS | / | / | / | / | / | / |

GSM 850_SAR Sensor on:

| EUT Position | Frequency (MHz) | Test Mode | Max. Meas. Power (dBm) | Max. Rated Power (dBm) | 1g SAR (W/kg) | | | |
|----------------------|-----------------|-----------|------------------------|------------------------|---------------|-----------|-------------|------|
| | | | | | Scaled Factor | Meas. SAR | Scaled SAR | Plot |
| Body Worn Back (0mm) | 824.2 | GSM | / | / | / | / | / | / |
| | 836.6 | GSM | 25 | 25.5 | 1.122 | 0.166 | 0.19 | 4# |
| | 848.8 | GSM | / | / | / | / | / | / |
| Body Back (0mm) | 824.2 | GPRS | / | / | / | / | / | / |
| | 836.6 | GPRS | 25.10 | 25.5 | 1.096 | 0.537 | 0.59 | 5# |
| | 848.8 | GPRS | / | / | / | / | / | / |
| Body Top (0mm) | 824.2 | GPRS | / | / | / | / | / | / |
| | 836.6 | GPRS | 25.10 | 25.5 | 1.096 | 0.204 | 0.22 | 6# |
| | 848.8 | GPRS | / | / | / | / | / | / |

Note:

1. When the 1-g SAR is $\leq 0.8\text{W/Kg}$, testing for other channels are optional.
2. The EUT transmit and receive through the same GSM antenna while testing SAR.
3. When SAR or MPE is not measured at the maximum power level allowed for production units, the results must be scaled to the maximum tune-up tolerance limit according to the power applied to the individual channels tested to determine compliance.
4. When the maximum output power variation across the required test channels is $> 0.5\text{ dB}$, instead of the middle channel, the highest output power channel must be used.
5. The Multi-slot Classes of EUT is Class 12 which has maximum 4 Downlink slots and 4 Uplink slots, the maximum active slots is 5, when perform the multiple slots scan, 1DL+4UL is the worst case.

PCS 1900_SAR Sensor off:

| EUT Position | Frequency (MHz) | Test Mode | Max. Meas. Power (dBm) | Max. Rated Power (dBm) | 1g SAR (W/kg) | | | |
|-----------------------|-----------------|-----------|------------------------|------------------------|---------------|-----------|-------------|------|
| | | | | | Scaled Factor | Meas. SAR | Scaled SAR | Plot |
| Body Worn Back (14mm) | 1850.2 | GSM | / | / | / | / | / | / |
| | 1880 | GSM | 30.27 | 30.5 | 1.054 | 0.184 | 0.19 | 7# |
| | 1909.8 | GSM | / | / | / | / | / | / |
| Body Back (14mm) | 1850.2 | GPRS | / | / | / | / | / | / |
| | 1880 | GPRS | 26.74 | 27 | 1.062 | 0.289 | 0.31 | 8# |
| | 1909.8 | GPRS | / | / | / | / | / | / |
| Body Right (14mm) | 1850.2 | GPRS | / | / | / | / | / | / |
| | 1880 | GPRS | 26.74 | 27 | 1.062 | <0.01 | 0.01 | / |
| | 1909.8 | GPRS | / | / | / | / | / | / |
| Body Top (14mm) | 1850.2 | GPRS | / | / | / | / | / | / |
| | 1880 | GPRS | 26.74 | 27 | 1.062 | 0.245 | 0.26 | 9# |
| | 1909.8 | GPRS | / | / | / | / | / | / |

PCS 1900_SAR Sensor off: :

| EUT Position | Frequency (MHz) | Test Mode | Max. Meas. Power (dBm) | Max. Rated Power (dBm) | 1g SAR (W/kg) | | | |
|----------------------|-----------------|-----------|------------------------|------------------------|---------------|-----------|-------------|------|
| | | | | | Scaled Factor | Meas. SAR | Scaled SAR | Plot |
| Body Worn Back (0mm) | 1850.2 | GSM | / | / | / | / | / | / |
| | 1880 | GSM | 18.31 | 18.5 | 1.045 | 0.170 | 0.18 | 10# |
| | 1909.8 | GSM | / | / | / | / | / | / |
| Body Back (0mm) | 1850.2 | GPRS | / | / | / | / | / | / |
| | 1880 | GPRS | 18.26 | 19 | 1.186 | 0.653 | 0.77 | 11# |
| | 1909.8 | GPRS | / | / | / | / | / | / |
| Body Top (0mm) | 1850.2 | GPRS | / | / | / | / | / | / |
| | 1880 | GPRS | 18.26 | 19 | 1.186 | 0.119 | 0.14 | 12# |
| | 1909.8 | GPRS | / | / | / | / | / | / |

Note:

1. When the 1-g SAR is $\leq 0.8\text{W/Kg}$, testing for other channels are optional.
2. The EUT transmit and receive through the same GSM antenna while testing SAR.
3. When SAR or MPE is not measured at the maximum power level allowed for production units, the results must be scaled to the maximum tune-up tolerance limit according to the power applied to the individual channels tested to determine compliance.
4. When the maximum output power variation across the required test channels is $> 0.5\text{ dB}$, instead of the middle channel, the highest output power channel must be used.
5. The Multi-slot Classes of EUT is Class 12 which has maximum 4 Downlink slots and 4 Uplink slots, the maximum active slots is 5, when perform the multiple slots scan, 1DL+4UL is the worst case.

WCDMA Band 5_SAR Sensor off:

| EUT Position | Frequency (MHz) | Test Mode | Max. Meas. Power (dBm) | Max. Rated Power (dBm) | 1g SAR (W/kg) | | | |
|------------------|-----------------|-----------|------------------------|------------------------|---------------|-----------|-------------|------|
| | | | | | Scaled Factor | Meas. SAR | Scaled SAR | Plot |
| Body Back (14mm) | 826.4 | RMC | / | / | / | / | / | / |
| | 836.6 | RMC | 23.32 | 23.5 | 1.042 | 0.302 | 0.31 | 13# |
| | 846.6 | RMC | / | / | / | / | / | / |
| Body Top (14mm) | 826.4 | RMC | / | / | / | / | / | / |
| | 836.6 | RMC | 23.32 | 23.5 | 1.042 | 0.204 | 0.21 | 14# |
| | 846.6 | RMC | / | / | / | / | / | / |

WCDMA Band 5_SAR Sensor on:

| EUT Position | Frequency (MHz) | Test Mode | Max. Meas. Power (dBm) | Max. Rated Power (dBm) | 1g SAR (W/kg) | | | |
|-----------------|-----------------|-----------|------------------------|------------------------|---------------|-----------|-------------|------|
| | | | | | Scaled Factor | Meas. SAR | Scaled SAR | Plot |
| Body Back (0mm) | 826.4 | RMC | / | / | / | / | / | / |
| | 836.6 | RMC | 17.21 | 18.5 | 1.346 | 0.577 | 0.78 | 15# |
| | 846.6 | RMC | / | / | / | / | / | / |
| Body Top (0mm) | 826.4 | RMC | / | / | / | / | / | / |
| | 836.6 | RMC | 17.21 | 18.5 | 1.346 | 0.325 | 0.44 | 16# |
| | 846.6 | RMC | / | / | / | / | / | / |

Note:

1. When the 1-g SAR is $\leq 0.8\text{W/Kg}$, testing for other channels are optional.
2. The EUT transmit and receive through the same antenna while testing SAR.
3. The default test configuration is to measure SAR with an established radio link between the EUT and a communication test set using a 12.2 kbps RMC (reference measurement Channel) Configured in Test Loop Model.
4. KDB 941225 D01-Body SAR is not required for HSDPA/HSUPA/DC-HSDPA/HSPA+ when the maximum average output of each RF channel is less than $\frac{1}{4}$ dB higher than measured 12.2kbps RMC or the maximum SAR for 12.2kbps RMC is $< 75\%$ of SAR limit.
5. When SAR or MPE is not measured at the maximum power level allowed for production units, the results must be scaled to the maximum tune-up tolerance limit according to the power applied to the individual channels tested to determine compliance.

LTE Band 5_SAR Sensor off:

| EUT Position | Frequency (MHz) | Bandwidth (MHz) | Test Mode | Max. Meas. Power (dBm) | Max. Rated Power (dBm) | 1g SAR (W/kg) | | | |
|-------------------|-----------------|-----------------|-----------|------------------------|------------------------|---------------|-----------|-------------|------|
| | | | | | | Scaled Factor | Meas. SAR | Scaled SAR | Plot |
| Body Back (14mm) | 829 | 10 | 1RB | / | / | / | / | / | / |
| | 836.5 | 10 | 1RB | 23.14 | 24.5 | 1.368 | 0.467 | 0.64 | 17# |
| | 844 | 10 | 1RB | / | / | / | / | / | / |
| | 836.5 | 10 | 50%RB | 22.22 | 24.5 | 1.69 | 0.356 | 0.60 | 18# |
| Body Right (14mm) | 829 | 10 | 1RB | / | / | / | / | / | / |
| | 836.5 | 10 | 1RB | 23.14 | 24.5 | 1.368 | <0.01 | 0.01 | / |
| | 844 | 10 | 1RB | / | / | / | / | / | / |
| | 836.5 | 10 | 50%RB | 22.22 | 24.5 | 1.69 | <0.01 | 0.01 | / |
| Body Top (14mm) | 829 | 10 | 1RB | / | / | / | / | / | / |
| | 836.5 | 10 | 1RB | 23.14 | 24.5 | 1.368 | 0.254 | 0.35 | 19# |
| | 844 | 10 | 1RB | / | / | / | / | / | / |
| | 836.5 | 10 | 50%RB | 22.22 | 24.5 | 1.69 | 0.197 | 0.33 | 20# |

LTE Band 5_SAR Sensor on:

| EUT Position | Frequency (MHz) | Bandwidth (MHz) | Test Mode | Max. Meas. Power (dBm) | Max. Rated Power (dBm) | 1g SAR (W/kg) | | | |
|-----------------|-----------------|-----------------|-----------|------------------------|------------------------|---------------|-----------|-------------|------|
| | | | | | | Scaled Factor | Meas. SAR | Scaled SAR | Plot |
| Body Back (0mm) | 829 | 10 | 1RB | / | / | / | / | / | / |
| | 836.5 | 10 | 1RB | 19.35 | 19.5 | 1.035 | 0.755 | 0.78 | 21# |
| | 844 | 10 | 1RB | / | / | / | / | / | / |
| | 836.5 | 10 | 50%RB | 19.24 | 19.5 | 1.062 | 0.694 | 0.74 | 22# |
| Body Top (0mm) | 829 | 10 | 1RB | / | / | / | / | / | / |
| | 836.5 | 10 | 1RB | 19.35 | 19.5 | 1.035 | 0.415 | 0.43 | 23# |
| | 844 | 10 | 1RB | / | / | / | / | / | / |
| | 836.5 | 10 | 50%RB | 19.24 | 19.5 | 1.062 | 0.412 | 0.44 | 24# |

LTE Band 7_SAR Sensor off:

| EUT Position | Frequency (MHz) | Bandwidth (MHz) | Test Mode | Max. Meas. Power (dBm) | Max. Rated Power (dBm) | 1g SAR (W/kg) | | | |
|-------------------|-----------------|-----------------|-----------|------------------------|------------------------|---------------|-----------|-------------|------|
| | | | | | | Scaled Factor | Meas. SAR | Scaled SAR | Plot |
| Body Back (14mm) | 2510 | 20 | 1RB | / | / | / | / | / | / |
| | 2535 | 20 | 1RB | 23.25 | 23.5 | 1.059 | 0.724 | 0.77 | 25# |
| | 2560 | 20 | 1RB | / | / | / | / | / | / |
| | 2535 | 20 | 50%RB | 23.14 | 23.5 | 1.086 | 0.581 | 0.63 | 26# |
| Body Right (14mm) | 2510 | 20 | 1RB | / | / | / | / | / | / |
| | 2535 | 20 | 1RB | 23.25 | 23.5 | 1.059 | <0.01 | 0.01 | / |
| | 2560 | 20 | 1RB | / | / | / | / | / | / |
| | 2535 | 20 | 50%RB | 23.14 | 23.5 | 1.086 | <0.01 | 0.01 | / |
| Body Top (14mm) | 2510 | 20 | 1RB | 23.36 | 23.5 | 1.033 | 1.15 | 1.19 | 27# |
| | 2535 | 20 | 1RB | 23.25 | 23.5 | 1.059 | 0.874 | 0.93 | 28# |
| | 2560 | 20 | 1RB | 23.36 | 23.5 | 1.033 | 0.970 | 1.00 | 29# |
| | 2510 | 20 | 50%RB | 23.08 | 23.5 | 1.102 | 0.947 | 1.04 | 30# |
| | 2535 | 20 | 50%RB | 23.14 | 23.5 | 1.086 | 0.985 | 1.07 | 31# |
| | 2560 | 20 | 50%RB | 23.08 | 23.5 | 1.102 | 0.788 | 0.87 | 32# |
| | 2510 | 20 | 100%RB | 23.04 | 23.5 | 1.112 | 0.934 | 1.04 | 33# |

LTE Band 7_SAR Sensor on:

| EUT Position | Frequency (MHz) | Bandwidth (MHz) | Test Mode | Max. Meas. Power (dBm) | Max. Rated Power (dBm) | 1g SAR (W/kg) | | | |
|-----------------|-----------------|-----------------|-----------|------------------------|------------------------|---------------|-----------|-------------|------|
| | | | | | | Scaled Factor | Meas. SAR | Scaled SAR | Plot |
| Body Back (0mm) | 2510 | 20 | 1RB | / | / | / | / | / | / |
| | 2535 | 20 | 1RB | 10.27 | 11 | 1.183 | 0.300 | 0.35 | 34# |
| | 2560 | 20 | 1RB | / | / | / | / | / | / |
| | 2535 | 20 | 50%RB | 10.39 | 11 | 1.151 | 0.316 | 0.36 | 35# |
| Body Top (0mm) | 2510 | 20 | 1RB | / | / | / | / | / | / |
| | 2535 | 20 | 1RB | 10.27 | 11 | 1.183 | 0.426 | 0.50 | 36# |
| | 2560 | 20 | 1RB | / | / | / | / | / | / |
| | 2535 | 20 | 50%RB | 10.39 | 11 | 1.151 | 0.413 | 0.48 | 37# |

LTE Band 41&38_SAR Sensor off:

| EUT Position | Frequency (MHz) | Bandwidth (MHz) | Test Mode | Max. Meas. Power (dBm) | Max. Rated Power (dBm) | 1g SAR (W/kg) | | | |
|-------------------|-----------------|-----------------|-----------|------------------------|------------------------|---------------|-----------|-------------|------|
| | | | | | | Scaled Factor | Meas. SAR | Scaled SAR | Plot |
| Body Back (14mm) | 2535 | 20 | 1RB | / | / | / | / | / | / |
| | 2593 | 20 | 1RB | 22.83 | 23.5 | 1.167 | 0.237 | 0.28 | 38# |
| | 2619 | 20 | 1RB | / | / | / | / | / | / |
| | 2645 | 20 | 1RB | / | / | / | / | / | / |
| | 2593 | 20 | 50%RB | 22.76 | 23.5 | 1.186 | 0.191 | 0.23 | 39# |
| Body Right (14mm) | 2535 | 20 | 1RB | / | / | / | / | / | / |
| | 2593 | 20 | 1RB | 22.83 | 23.5 | 1.167 | <0.01 | 0.01 | / |
| | 2619 | 20 | 1RB | / | / | / | / | / | / |
| | 2645 | 20 | 1RB | / | / | / | / | / | / |
| | 2593 | 20 | 50%RB | 22.76 | 23.5 | 1.186 | <0.01 | 0.01 | / |
| Body Top (14mm) | 2535 | 20 | 1RB | / | / | / | / | / | / |
| | 2593 | 20 | 1RB | 22.83 | 23.5 | 1.167 | 0.220 | 0.26 | 40# |
| | 2619 | 20 | 1RB | / | / | / | / | / | / |
| | 2645 | 20 | 1RB | / | / | / | / | / | / |
| | 2593 | 20 | 50%RB | 22.76 | 23.5 | 1.186 | 0.170 | 0.20 | 41# |

LTE Band 41&38_SAR Sensor on:

| EUT Position | Frequency (MHz) | Bandwidth (MHz) | Test Mode | Max. Meas. Power (dBm) | Max. Rated Power (dBm) | 1g SAR (W/kg) | | | |
|-----------------|-----------------|-----------------|-----------|------------------------|------------------------|---------------|-----------|-------------|------|
| | | | | | | Scaled Factor | Meas. SAR | Scaled SAR | Plot |
| Body Back (0mm) | 2545 | 20 | 1RB | / | / | / | / | / | / |
| | 2593 | 20 | 1RB | 16.29 | 17.5 | 1.321 | 0.343 | 0.45 | 42# |
| | 2619 | 20 | 1RB | / | / | / | / | / | / |
| | 2645 | 20 | 1RB | / | / | / | / | / | / |
| | 2593 | 20 | 50%RB | 16.24 | 17.5 | 1.337 | 0.358 | 0.48 | 43# |
| Body Top (0mm) | 2545 | 20 | 1RB | / | / | / | / | / | / |
| | 2593 | 20 | 1RB | 16.29 | 17.5 | 1.321 | 0.483 | 0.64 | 44# |
| | 2619 | 20 | 1RB | / | / | / | / | / | / |
| | 2645 | 20 | 1RB | / | / | / | / | / | / |
| | 2593 | 20 | 50%RB | 16.24 | 17.5 | 1.337 | 0.510 | 0.68 | 45# |

Note*:

1. The E-UTRA Operating Band 38 is a subset of band 41, and they are same in modulation type and rated output power, therefore, they were considered as one frequency band during SAR measurement.

2. The frequency range of LTE Band 41 is 2535 ~ 2655MHz. Per KDB 447498 D01, according to the following formula Calculate Nc is 4.

KDB procedures, the following should be applied to determine the number of required test channels. The test channels should be evenly spread across the transmission frequency band of each wireless mode.¹⁴

$$N_c = \text{Round} \left\{ \left[100(f_{\text{high}} - f_{\text{low}}) / f_c \right]^{0.5} \times (f_c / 100)^{0.2} \right\},$$

where

- N_c is the number of test channels, rounded to the nearest integer,
- f_{high} and f_{low} are the highest and lowest channel frequencies within the transmission band,
- f_c is the mid-band channel frequency,
- all frequencies are in MHz.

3.LTE Band 41 SAR tested were performed using Power Class 3

Note:

1. When the 1-g SAR is $\leq 0.8\text{W/Kg}$, testing for other channels are optional.
2. SAR for LTE band exposure configurations is measured according to the procedures of KDB 941225 D05 SAR for LTE Devices v02.
3. KDB941225D05-SAR for higher order modulation is required only when the highest maximum output power for the configuration in the higher order modulation is > 0.5 dB higher than the same configuration in QPSK or when the reported SAR for the QPSK configuration is > 1.45 W/kg
4. KDB941225D05-For QPSK with 100% RB allocation, when the reported SAR measured for the Highest output power channel is < 1.45 W/kg, tests for the remaining required test channels are optional.
5. KDB941225D05- For QPSK with 100% RB allocation, SAR is not required when the highest maximum output power for 100 % RB allocation is less than the highest maximum output power in 50% and 1 RB allocations and the highest reported SAR for 1 RB and 50% RB allocation are ≤ 0.8 W/kg.
6. KDB941225D05- Start with the largest channel bandwidth and measure SAR for QPSK with 1 RB allocation, using the RB offset and required test channel combination with the highest maximum output power among RB offset the upper edge, middle and lower edge of each required test channel.
7. KDB941225D05- other channel bandwidths SAR test is required when the highest maximum output power of a configuration requiring testing in the smaller channel bandwidth is > 0.5 dB higher than the equivalent channel configurations in the largest channel bandwidth configuration or the reported SAR of a configuration for the largest channel bandwidth is > 1.45 W/kg.
8. Worst case SAR for 50% RB allocation is selected to be tested.

WLAN 2.4G:

| EUT Position | Frequency (MHz) | Test Mode | Max. Meas. Power (dBm) | Max. Rated Power (dBm) | 1g SAR (W/kg) | | | | |
|------------------|-----------------|-----------|------------------------|------------------------|---------------|-------------------|-----------|-------------|------|
| | | | | | Scaled Factor | Duty cycle Factor | Meas. SAR | Scaled SAR | Plot |
| Body Back (14mm) | 2412 | 802.11b | / | / | / | / | / | / | / |
| | 2437 | 802.11b | 10.53 | 11 | 1.114 | 1 | 0.029 | 0.03 | 46# |
| | 2462 | 802.11b | / | / | / | / | / | / | / |
| Body Top (14mm) | 2412 | 802.11b | / | / | / | / | / | / | / |
| | 2437 | 802.11b | 10.53 | 11 | 1.114 | 1 | 0.026 | 0.03 | 47# |
| | 2462 | 802.11b | / | / | / | / | / | / | / |
| Body Back (0mm) | 2412 | 802.11b | / | / | / | / | / | / | / |
| | 2437 | 802.11b | 10.53 | 11 | 1.114 | 1 | 0.423 | 0.47 | 48# |
| | 2462 | 802.11b | / | / | / | / | / | / | / |
| Body Top (0mm) | 2412 | 802.11b | / | / | / | / | / | / | / |
| | 2437 | 802.11b | 10.53 | 11 | 1.114 | 1 | 0.235 | 0.26 | 49# |
| | 2462 | 802.11b | / | / | / | / | / | / | / |

Note:

1. When the 1-g SAR is ≤ 0.8 W/kg, testing for other channels are optional.
2. When SAR or MPE is not measured at the maximum power level allowed for production units, the results must be scaled to the maximum tune-up tolerance limit according to the power applied to the individual channels tested to determine compliance.
3. For 802.11b mode power is the largest among 802.11b/g/n, 802.11 b mode as initial test configuration is selected to test.
4. According 2016 Oct. TCB, for SAR testing of WIFI signal with non-100% duty cycle, the measured SAR is scaled-up by the duty cycle scaling factor which is equal to "1/(duty cycle)".

9. Measurement Variability

In accordance with published RF Exposure KDB procedure 865664 D01 SAR measurement 100 MHz to 6 GHz v01. These additional measurements are repeated after the completion of all measurements requiring the same head or body tissue-equivalent medium in a frequency band. The test device should be returned to ambient conditions (normal room temperature) with the battery fully charged before it is re-mounted on the device holder for the repeated measurement(s) to minimize any unexpected variations in the repeated results

- 1) Repeated measurement is not required when the original highest measured SAR is < 0.80 W/kg; steps 2) through 4) do not apply.
- 2) When the original highest measured SAR is ≥ 0.80 W/kg, repeat that measurement once.
- 3) Perform a second repeated measurement only if the ratio of largest to smallest SAR for the original and first repeated measurements is > 1.20 or when the original or repeated measurement is ≥ 1.45 W/kg (~ 10% from the 1-g SAR limit).
- 4) Perform a third repeated measurement only if the original, first or second repeated measurement is ≥ 1.5 W/kg and the ratio of largest to smallest SAR for the original, first and second repeated measurements is > 1.20 .

Note: The same procedures should be adapted for measurements according to extremity and occupational exposure limits by applying a factor of 2.5 for extremity exposure and a factor of 5 for occupational exposure to the corresponding SAR thresholds.

The Highest Measured SAR Configuration in Each Frequency Band

Body

| SAR probe calibration point | Frequency Band | Freq.(MHz) | EUT Position | Meas. SAR (W/kg) | | Largest to Smallest SAR Ratio |
|-----------------------------|----------------|------------|-----------------|------------------|----------|-------------------------------|
| | | | | Original | Repeated | |
| 2600MHz | LTE Band 7 | 2510 | Body Top (14mm) | 1.15 | 1.08 | 1.06 |

Note:

1. Second Repeated Measurement is not required since the ratio of the largest to smallest SAR for the original and first repeated measurement is not > 1.20 .
2. The measured SAR results **do not** have to be scaled to the maximum tune-up tolerance to determine if repeated measurements are required.
3. SAR measurement variability must be assessed for each frequency band, which is determined by the **SAR probe calibration point and tissue-equivalent medium** used for the device measurements.

10. SAR SIMULTANEOUS TRANSMISSION DESCRIPTION

Simultaneous Transmission:

| Description of Simultaneous Transmit Capabilities | | |
|---|---------------|----------|
| Transmitter Combination | Simultaneous? | Hotspot? |
| WWAN(GSM/WCDMA/LTE) + Bluetooth | √ | × |
| WWAN(GSM/WCDMA/LTE) + WLAN 2.4G/5G | √ | √ |
| WLAN + Bluetooth | × | × |

Note:

KDB616217 D04- The standalone and simultaneous transmission SAR tests required for tablets are more conservative than the hotspot mode use configurations; therefore, additional testing for hotspot SAR is not required.

Simultaneous SAR test exclusion considerations:

SAR Sensor off:

| Mode(SAR1+SAR2) | Position | Reported SAR(W/kg) | | Σ SAR < 1.6W/kg |
|---------------------------------|-----------|--------------------|------|------------------------|
| | | SAR1 | SAR2 | |
| WWAN(GSM/WCDMA/LTE) + Bluetooth | Body Back | 0.77 | 0.04 | 0.81 |
| | Body Top | 1.19 | 0.04 | 1.23 |
| WWAN(GSM/WCDMA/LTE) + WLAN 2.4G | Body Back | 0.77 | 0.03 | 0.80 |
| | Body Top | 1.19 | 0.03 | 1.22 |
| WWAN(GSM/WCDMA/LTE) + WLAN 5G | Body Back | 0.77 | 0.13 | 0.90 |
| | Body Top | 1.19 | 0.13 | 1.32 |

SAR Sensor on:

| Mode(SAR1+SAR2) | Position | Reported SAR(W/kg) | | Σ SAR < 1.6W/kg |
|---------------------------------|-----------|--------------------|------|------------------------|
| | | SAR1 | SAR2 | |
| WWAN(GSM/WCDMA/LTE) + Bluetooth | Body Back | 0.78 | 0.12 | 0.90 |
| | Body Top | 0.68 | 0.12 | 0.80 |
| WWAN(GSM/WCDMA/LTE) + WLAN 2.4G | Body Back | 0.78 | 0.47 | 1.25 |
| | Body Top | 0.68 | 0.26 | 0.94 |
| WWAN(GSM/WCDMA/LTE) + WLAN 5G | Body Back | 0.78 | 0.36 | 1.14 |
| | Body Top | 0.68 | 0.36 | 1.04 |

Conclusion:

Sum of SAR: Σ SAR \leq 1.6 W/kg therefore simultaneous transmission SAR with Volume Scans is **not required**.

11. SAR Plots

Please Refer to the Attachment.

APPENDIX A MEASUREMENT UNCERTAINTY

The uncertainty budget has been determined for the measurement system and is given in the following Table.

Measurement uncertainty evaluation for IEEE1528-2013 SAR test

| Source of uncertainty | Tolerance/ uncertainty ± % | Probability distribution | Divisor | ci (1 g) | ci (10 g) | Standard uncertainty ± %, (1 g) | Standard uncertainty ± %, (10 g) |
|---|----------------------------------|-----------------------------|------------|-------------|--------------|---------------------------------------|--|
| Measurement system | | | | | | | |
| Probe calibration | 6.55 | N | 1 | 1 | 1 | 6.3 | 6.3 |
| Axial Isotropy | 4.7 | R | $\sqrt{3}$ | 1 | 1 | 2.7 | 2.7 |
| Hemispherical Isotropy | 9.6 | R | $\sqrt{3}$ | 0 | 0 | 0.0 | 0.0 |
| Boundary effect | 1.0 | R | $\sqrt{3}$ | 1 | 1 | 0.6 | 0.6 |
| Linearity | 4.7 | R | $\sqrt{3}$ | 1 | 1 | 2.7 | 2.7 |
| Detection limits | 1.0 | R | $\sqrt{3}$ | 1 | 1 | 0.6 | 0.6 |
| Readout electronics | 0.3 | N | 1 | 1 | 1 | 0.3 | 0.3 |
| Response time | 0.0 | R | $\sqrt{3}$ | 1 | 1 | 0.0 | 0.0 |
| Integration time | 0.0 | R | $\sqrt{3}$ | 1 | 1 | 0.0 | 0.0 |
| RF ambient conditions – noise | 1.0 | R | $\sqrt{3}$ | 1 | 1 | 0.6 | 0.6 |
| RF ambient conditions– reflections | 1.0 | R | $\sqrt{3}$ | 1 | 1 | 0.6 | 0.6 |
| Probe positioner mech. Restrictions | 0.8 | R | $\sqrt{3}$ | 1 | 1 | 0.5 | 0.5 |
| Probe positioning with respect to phantom shell | 6.7 | R | $\sqrt{3}$ | 1 | 1 | 3.9 | 3.9 |
| Post-processing | 2.0 | R | $\sqrt{3}$ | 1 | 1 | 1.2 | 1.2 |
| Test sample related | | | | | | | |
| Test sample positioning | 2.8 | N | 1 | 1 | 1 | 2.8 | 2.8 |
| Device holder uncertainty | 6.3 | N | 1 | 1 | 1 | 6.3 | 6.3 |
| Drift of output power | 5.0 | R | $\sqrt{3}$ | 1 | 1 | 2.9 | 2.9 |
| Phantom and set-up | | | | | | | |
| Phantom uncertainty (shape and thickness tolerances) | 4.0 | R | $\sqrt{3}$ | 1 | 1 | 2.3 | 2.3 |
| Liquid conductivity target) | 5.0 | R | $\sqrt{3}$ | 0.64 | 0.43 | 1.8 | 1.2 |
| Liquid conductivity meas.) | 2.5 | N | 1 | 0.64 | 0.43 | 1.6 | 1.1 |
| Liquid permittivity target) | 5.0 | R | $\sqrt{3}$ | 0.6 | 0.49 | 1.7 | 1.4 |
| Liquid permittivity meas.) | 2.5 | N | 1 | 0.6 | 0.49 | 1.5 | 1.2 |
| Combined standard uncertainty | | RSS | | | | 12.2 | 12.0 |
| Expanded uncertainty 95 % confidence interval) | | | | | | 24.1 | 23.7 |

Measurement uncertainty evaluation for IEC62209-1 SAR test

| Source of uncertainty | Tolerance/uncertainty ± % | Probability distribution | Divisor | ci (1 g) | ci (10 g) | Standard uncertainty ± %, (1 g) | Standard uncertainty ± %, (10 g) |
|--|---------------------------|--------------------------|------------|----------|-----------|---------------------------------|----------------------------------|
| Measurement system | | | | | | | |
| Probe calibration | 6.55 | N | 1 | 1 | 1 | 6.3 | 6.3 |
| Axial Isotropy | 4.7 | R | $\sqrt{3}$ | 1 | 1 | 2.7 | 2.7 |
| Hemispherical Isotropy | 9.6 | R | $\sqrt{3}$ | 0 | 0 | 0.0 | 0.0 |
| Boundary effect | 1.0 | R | $\sqrt{3}$ | 1 | 1 | 0.6 | 0.6 |
| Linearity | 4.7 | R | $\sqrt{3}$ | 1 | 1 | 2.7 | 2.7 |
| Detection limits | 1.0 | R | $\sqrt{3}$ | 1 | 1 | 0.6 | 0.6 |
| Readout electronics | 0.3 | N | 1 | 1 | 1 | 0.3 | 0.3 |
| Response time | 0.0 | R | $\sqrt{3}$ | 1 | 1 | 0.0 | 0.0 |
| Integration time | 0.0 | R | $\sqrt{3}$ | 1 | 1 | 0.0 | 0.0 |
| RF ambient conditions – noise | 1.0 | R | $\sqrt{3}$ | 1 | 1 | 0.6 | 0.6 |
| Probe positioning with respect to phantom shell | 6.7 | R | $\sqrt{3}$ | 1 | 1 | 3.9 | 3.9 |
| Probe positioner mech. Restrictions | 0.8 | R | $\sqrt{3}$ | 1 | 1 | 0.5 | 0.5 |
| RF ambient conditions– reflections | 1.0 | R | $\sqrt{3}$ | 1 | 1 | 0.6 | 0.6 |
| Post-processing | 2.0 | R | $\sqrt{3}$ | 1 | 1 | 1.2 | 1.2 |
| Test sample related | | | | | | | |
| Test sample positioning | 2.8 | N | 1 | 1 | 1 | 2.8 | 2.8 |
| Device holder uncertainty | 6.3 | N | 1 | 1 | 1 | 6.3 | 6.3 |
| Drift of output power | 5.0 | R | $\sqrt{3}$ | 1 | 1 | 2.9 | 2.9 |
| Phantom and set-up | | | | | | | |
| Phantom uncertainty (shape and thickness tolerances) | 4.0 | R | $\sqrt{3}$ | 1 | 1 | 2.3 | 2.3 |
| Liquid conductivity target) | 5.0 | R | $\sqrt{3}$ | 0.64 | 0.43 | 1.8 | 1.2 |
| Liquid conductivity meas.) | 2.5 | N | 1 | 0.64 | 0.43 | 1.6 | 1.1 |
| Liquid permittivity target) | 5.0 | R | $\sqrt{3}$ | 0.6 | 0.49 | 1.7 | 1.4 |
| Liquid permittivity meas.) | 2.5 | N | 1 | 0.6 | 0.49 | 1.5 | 1.2 |
| Combined standard uncertainty | | RSS | | | | 12.2 | 12.0 |
| Expanded uncertainty 95 % confidence interval) | | | | | | 24.0 | 23.6 |

APPENDIX B EUT TEST POSITION PHOTOS

Please Refer to the Attachment.

APPENDIX C CALIBRATION CERTIFICATES

Please Refer to the Attachment.

******* END OF REPORT *******