



# SAR Test Report



For

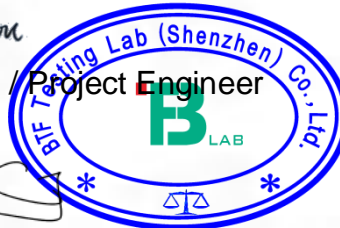
**Applicant Name:** TECNO MOBILE LIMITED  
**Address:** FLAT N 16/F BLOCK B UNIVERSAL INDUSTRIAL CENTRE 19-25 SHAN MEI STREET FOTAN NT HONGKONG  
**EUT Name:** Laptop Computer  
**Brand Name:** TECNO  
**Model Number:** S15AM

## Issued By

**Company Name:** BTF Testing Lab (Shenzhen) Co., Ltd.  
**Address:** F101, 201 and 301, Building 1, Block 2, Tantou Industrial Park, Tantou Community, Songgang Street, Bao'an District, Shenzhen, China

**Report Number:** BTF230613R00701  
**Test Standards:** 47 CFR Part 2.1093 IEEE1528-2013 IEEE C95.1-2019  
KDB 447498 D01 KDB 865664 D01 KDB 865664 D02  
KDB 248227 D01 KDB 616217 D04 KDB 648474 D04  
KDB 690783 D01  
**FCC ID:** 2ADYY-S15AM  
**Test Conclusion:** Pass  
**Test Date:** 2023-06-19  
**Date of Issue:** 2023-06-27

**Prepared By:**   
**Date:** 2023-06-27  
**Approved By:**   
**Date:** 2023-06-27



*Note: All the test results in this report only related to the testing samples. Which can be duplicated completely for the legal use with approval of applicant; it shall not be reproduced except in full without the written approval of BTF Testing Lab (Shenzhen) Co., Ltd., All the objections should be raised within thirty days from the date of issue. To validate the report, you can contact us.*

Revision History		
Version	Issue Date	Revisions Content
R_V0	2023-06-27	Original
<i>Note:</i>	<i>Once the revision has been made, then previous versions reports are invalid.</i>	

## Table of Contents

1. Introduction.....	4
1.1 Identification of Testing Laboratory.....	4
1.2 Identification of the Responsible Testing Location.....	4
1.3 Laboratory Condition.....	4
1.4 Announcement.....	4
2. Product Information.....	5
2.1 Application Information.....	5
2.2 Manufacturer Information.....	5
2.3 Factory Information.....	5
2.4 General Description of Equipment under Test (EUT).....	5
2.5 Equipment under Test Ancillary Equipment.....	5
2.6 Technical Information.....	5
3. Summary of Test Results.....	6
3.1 Test Standards.....	6
3.2 Device Category and SAR Limit.....	7
3.3 Test Result Summary.....	7
3.4 Test Uncertainty.....	8
4. Measurement System.....	10
4.1 Specific Absorption Rate (SAR) Definition.....	10
4.2 MVG SAR System.....	10
5. System Verification.....	14
5.1 Purpose of System Check.....	14
5.2 System Check Setup.....	15
6. TEST POSITION CONFIGURATIONS.....	15
6.1 Head Exposure Conditions.....	15
6.2 Body-worn Position Conditions.....	17
6.3 Hotspot Mode Exposure Position Conditions.....	18
6.4 Product Specific 10g Exposure Consideration.....	18
7. Measurement Procedure.....	19
7.1 Measurement Process Diagram.....	19
7.2 SAR Scan General Requirement.....	20
7.3 Measurement Procedure.....	21
7.4 Area & Zoom Scan Procedure.....	21
8. Conducted RF Output Power.....	22
8.1 Wi-Fi.....	22
8.2 Bluetooth.....	26
9. Test Exclusion Consideration.....	27
9.1 SAR Test Exclusion Consideration Table.....	27
10. Test Result.....	28
11. SAR Measurement Variability.....	29
12. Simultaneous Transmission.....	30
12.1 Simultaneous Transmission Mode Considerations.....	30
13. Test Equipment List.....	31
ANNEX A Simulating Liquid Verification Result.....	32
ANNEX B System Check Result.....	32
ANNEX C Test Data.....	43
ANNEX D SAR Test Setup Photos.....	51
ANNEX E EUT External and Internal Photos.....	51
ANNEX F Calibration Information.....	51

## 1. Introduction

### 1.1 Identification of Testing Laboratory

Company Name:	BTF Testing Lab (Shenzhen) Co., Ltd.
Address:	F101, 201 and 301, Building 1, Block 2, Tantou Industrial Park, Tantou Community, Songgang Street, Bao'an District, Shenzhen, China
Phone Number:	+86-0755-23146130
Fax Number:	+86-0755-23146130

### 1.2 Identification of the Responsible Testing Location

Test Location:	BTF Testing Lab (Shenzhen) Co., Ltd.
Address:	F101, 201 and 301, Building 1, Block 2, Tantou Industrial Park, Tantou Community, Songgang Street, Bao'an District, Shenzhen, China
Description:	All measurement facilities used to collect the measurement data are located at F101,201 and 301, Building 1, Block 2, Tantou Industrial Park, Tantou Community, Songgang Street, Bao'an District, Shenzhen, China
FCC Registration Number	518915
Designation Number	CN1330

### 1.3 Laboratory Condition

Ambient Temperature:	21°C to 25°C
Ambient Relative Humidity:	48% to 59%
Ambient Pressure:	100 kPa to 102 kPa

### 1.4 Announcement

- (1) The test report reference to the report template version v0.
- (2) The test report is invalid if not marked with the signatures of the persons responsible for preparing, reviewing and approving the test report.
- (3) The test report is invalid if there is any evidence and/or falsification.
- (4) This document may not be altered or revised in any way unless done so by BTF and all revisions are duly noted in the revisions section.
- (5) Content of the test report, in part or in full, cannot be used for publicity and/or promotional purposes without prior written approval from the laboratory.
- (6) The laboratory is only responsible for the data released by the laboratory, except for the part provided by the applicant.

## 2. Product Information

### 2.1 Application Information

Company Name:	TECNO MOBILE LIMITED
Address:	FLAT N 16/F BLOCK B UNIVERSAL INDUSTRIAL CENTRE 19-25 SHAN MEI STREET FOTAN NT HONGKONG

### 2.2 Manufacturer Information

Company Name:	TECNO MOBILE LIMITED
Address:	FLAT N 16/F BLOCK B UNIVERSAL INDUSTRIAL CENTRE 19-25 SHAN MEI STREET FOTAN NT HONGKONG

### 2.3 Factory Information

Company Name:	TECNO MOBILE LIMITED
Address:	FLAT N 16/F BLOCK B UNIVERSAL INDUSTRIAL CENTRE 19-25 SHAN MEI STREET FOTAN NT HONGKONG

### 2.4 General Description of Equipment under Test (EUT)

EUT Name	Laptop Computer
Under Test Model Name	S15AM
Sample No.	BTFSN230613E004-1/1

### 2.5 Equipment under Test Ancillary Equipment

Ancillary Equipment 1	Rechargeable Battery	
	Capacity	6060mAh
	Rated Voltage	11.55V

### 2.6 Technical Information

Network and Wireless connectivity	2.4G WIFI 802.11b, 802.11g, 802.11n(HT20/HT40) 5G WIFI 802.11a, 802.11n(HT20/40), 802.11ac(VHT20/40/80) Bluetooth (EDR+BLE)
-----------------------------------	---

The requirement for the following technical information of the EUT was tested in this report:

Operating Mode	WLAN, Bluetooth	
Frequency Range	802.11b/g/n(HT20)	2412 ~ 2462 MHz
	802.11n(HT40)	2422 ~ 2452 MHz
	802.11a/802.11n(HT20/HT40)/ 802.11ac(VHT20/VHT40/VHT80)	5150 ~ 5250 MHz
		5250 ~ 5350 MHz
	5725 ~ 5850 MHz	
	Bluetooth	2402 ~ 2480 MHz
Antenna Type	WLAN: PIFA Antenna BT: PIFA Antenna	
Hotspot Function	Not Support	
Power Reduction	Not Support	
Exposure Category	General Population/Uncontrolled exposure	
EUT Stage	Portable Device	
Product	Type	
	<input type="checkbox"/> Production unit	<input checked="" type="checkbox"/> Identical prototype

### 3. Summary of Test Results

#### 3.1 Test Standards

No.	Identity	Document Title
1	47 CFR Part 2.1093	Radiofrequency radiation exposure evaluation: portable devices
2	IEEE1528-2013	Recommended Practice for Determining the Peak Spatial-Average Specific Absorption Rate in the Human Head from Wireless Communications Devices: Measurement Techniques
3	IEEE C95.1-2019	IEEE Standard for Safety Levels with Respect to Human Exposure to Electric, Magnetic, and Electromagnetic Fields, 0 Hz to 300 GHz
4	KDB 447498 D01	General RF Exposure Guidance v06
5	KDB 865664 D01	SAR measurement 100MHz to 6GHz v01r04
6	KDB 865664 D02	RF Exposure Reporting v01r02
7	KDB 248227 D01	802.11 Wi-Fi SAR v02r02
8	KDB 616217 D04	SAR for laptop and tablets v01r02
9	KDB 648474 D04	Handset SAR v01r03
10	KDB 690783 D01	SAR Listings on Grant v01r03

### 3.2 Device Category and SAR Limit

This device belongs to portable device category because its radiating structure is allowed to be used within 20 centimeters of the body of the user. Limit for General Population/Uncontrolled exposure should be applied for this device, it is 1.6 W/kg as averaged over any 1 gram of tissue.

Body Position	SAR Value (W/Kg)	
	General Population/ Uncontrolled Exposure	Occupational/ Controlled Exposure
Whole-Body SAR (averaged over the entire body)	0.08	0.4
Partial-Body SAR (averaged over any 1 gram of tissue)	1.60	8.0
SAR for hands, wrists, feet and ankles (averaged over any 10 grams of tissue)	4.0	20.0

NOTE:  
**General Population/Uncontrolled Exposure:** Locations where there is the exposure of individuals who have no knowledge or control of their exposure. General population/uncontrolled exposure limits are applicable to situations in which the general public may be exposed or in which persons who are exposed as a consequence of their employment may not be made fully aware of the potential for exposure or cannot exercise control over their exposure. Members of the general public would come under this category when exposure is not employment-related; for example, in the case of a wireless transmitter that exposes persons in its vicinity.  
**Occupational/Controlled Exposure:** Locations where there is exposure that may be incurred by persons who are aware of the potential for exposure. In general, occupational/controlled exposure limits are applicable to situations in which persons are exposed as a consequence of their employment, who have been made fully aware of the potential for exposure and can exercise control over their exposure. This exposure category is also applicable when the exposure is of a transient nature due to incidental passage through a location where the exposure levels may be higher than the general population/uncontrolled limits, but the exposed person is fully aware of the potential for exposure and can exercise control over his or her exposure by leaving the area or by some other appropriate means.

### 3.3 Test Result Summary

The maximum results of Specific Absorption Rate (SAR) found during test as follows:

<Highest Reported standalone SAR Summary>

Exposure Position	Frequency Band	Reported SAR (W/kg)	Equipment Class	Highest Reported SAR (W/kg)
Body-supported 1-g SAR (0 mm Gap)	WLAN 2.4 GHz	0.349	DTS	<b>0.539</b>
	WLAN 5.2 GHz	0.224	NII	
	WLAN 5.4 GHz	<b>0.539</b>		
	WLAN 5.8 GHz	0.409		

\*This device is in compliance with Specific Absorption Rate(SAR) for general population/uncontrolled exposure limits (1.6 W/kg) specified in FCC47 CFR part 2(2.1093) and ANSI/IEEE C95.1-2019, and had been tested in accordance with the measurement methods and procedures specified in IEEE 1528-2013.

<Highest Reported Simultaneous SAR>

Exposure Position	Simultaneous Configuration	Highest Reported Simultaneous Transmission SAR (W/kg)	Limit (W/kg)	Verdict
Body-supported 1-g SAR (0 mm Gap)	Ant.1 5.4G WIFI + Ant.2 5.4G WIFI (MIMO)	1.036	1.6	Pass

### 3.4 Test Uncertainty

#### 3.4.1 Measurement uncertainty evaluation for SAR test

#### Measurement uncertainty evaluation for SAR test (300MHz to 6GHz)

Uncertainty Component	Tol (+- %)	Prob. Dist.	Div.	Ci (1g)	Ci (10g)	1g Ui (+-%)	10 g Ui (+-%)	Vi veff
<b>Measurement System</b>								
Probe calibration	5.8	N	1	1	1	5.80	5.80	∞
Axial Isotropy	3.5	R	√3	√0.5	√0.5	1.43	1.43	∞
Hemispherical Isotropy	5.9	R	√3	√0.5	√0.5	2.41	2.41	∞
Boundary effect	1.0	R	√3	1	1	0.58	0.58	∞
Linearity	4.7	R	√3	1	1	2.71	2.71	∞
System detection limits	1.0	R	√3	1	1	0.58	0.58	∞
Modulation response	3.0	R	√3	1	1	1.73	1.73	∞
Readout Electronics	0.5	N	1	1	1	0.50	0.50	∞
Response Time	0	R	√3	1	1	0.00	0.00	∞
Integration Time	1.4	R	√3	1	1	0.81	0.81	∞
RF ambient Conditions - Noise	3.0	R	√3	1	1	1.73	1.73	∞
RF ambient Conditions - Reflections	3.0	R	√3	1	1	1.73	1.73	∞
Probe positioner Mechanical Tolerance	1.4	R	√3	1	1	0.81	0.81	∞
Probe positioning with respect to Phantom Shell	1.4	R	√3	1	1	0.81	0.81	∞
Extrapolation, interpolation and integration Algorithms for Max. SAR Evaluation	2.3	R	√3	1	1	1.33	1.33	∞
<b>Test sample Related</b>								
Test sample positioning	2.6	N	1	1	1	2.60	2.60	11
Device Holder Uncertainty	3.0	N	1	1	1	3.00	3.00	7
Output power Variation - SAR drift measurement	5.0	R	√3	1	1	2.89	2.89	∞
SAR scaling	2.0	R	√3	1	1	1.15	1.15	∞
<b>Phantom and Tissue Parameters</b>								
Phantom Shell Uncertainty - Shape, Thickness and Permittivity	4	R	√3	1	1	2.31	2.31	∞
Uncertainty in SAR correction for deviation in permittivity and conductivity	2.0	N	1	1	0.84	2.00	1.68	∞
Liquid conductivity measurement	4.0	N	1	0.78	0.71	3.12	2.84	5
Liquid permittivity measurement	5.0	N	1	0.23	0.26	1.15	1.30	5
Liquid Conductivity - Temperature Uncertainty	2.5	R	√3	0.78	0.71	1.13	1.02	∞
Liquid permittivity - Temperature Uncertainty	2.5	R	√3	0.23	0.26	0.33	0.38	∞
Combined Standard Uncertainty		RSS				10.47	10.34	
Expanded Uncertainty (95% Confidence interval)		k				20.95	20.69	

\* This uncertainty represents an expanded uncertainty expressed at approximately the 95% confidence level using a coverage factor of k=2.



## 3.4.2 Measurement uncertainty evaluation for system check

Uncertainty Component	Tol (+-%)	Prob. Dist.	Div.	Ci (1g)	Ci (10 g)	1g Ui (+-%)	10 g Ui (+-%)	Vi veff
<b>Measurement System</b>								
Probe calibration	5.8	N	1	1	1	5.80	5.80	∞
Axial Isotropy	3.5	R	√3	1	1	2.02	2.02	∞
Hemispherical Isotropy	5.9	R	√3	0	0	0.00	0.00	∞
Boundary effect	1	R	√3	1	1	0.58	0.58	∞
Linearity	4.7	R	√3	1	1	2.71	2.71	∞
System detection limits	1	R	√3	1	1	0.58	0.58	∞
Modulation response	0	N	√3	0	0	0.00	0.00	∞
Readout Electronics	0.5	N	1	1	1	0.50	0.50	∞
Response Time	0	R	√3	0	0	0.00	0.00	∞
Integration Time	1.4	R	√3	0	0	0.00	0.00	∞
RF ambient Conditions - Noise	3	R	√3	1	1	1.73	1.73	∞
RF ambient Conditions - Reflections	3	R	√3	1	1	1.73	1.73	∞
Probe positioner Mechanical Tolerance	1.4	R	√3	1	1	0.81	0.81	∞
Probe positioning with respect to Phantom Shell	1.4	R	√3	1	1	0.81	0.81	∞
Extrapolation, interpolation and integration Algorithms for Max. SAR Evaluation	2.3	R	√3	1	1	1.33	1.33	∞
<b>Dipole</b>								
Deviation of experimental source from numerical source	5	N	1	1	1	5.00	5.00	∞
Input Power and SAR drift measurement	0.5	R	√3	1	1	0.29	0.29	∞
Dipole Axis to Liquid Dist.	2.0	R	√3	1	1	1.15	1.15	∞
<b>Phantom and Tissue Parameters</b>								
Phantom Shell Uncertainty - Shape, Thickness and Permittivity	4	R	√3	1	1	2.31	2.31	∞
Uncertainty in SAR correction for deviation in permittivity and conductivity	2.0	N	1	1	0.84	2.00	1.68	∞
Liquid conductivity measurement	4	N	1	0.78	0.71	3.12	2.84	5
Liquid permittivity measurement	5.0	N	1	0.23	0.26	1.15	1.30	5
Liquid Conductivity - Temperature Uncertainty	2.5	R	√3	0.78	0.71	1.13	1.02	∞
Liquid permittivity - Temperature Uncertainty	2.5	R	√3	0.23	0.26	0.33	0.38	∞
Combined Standard Uncertainty		RSS				10.16	10.03	
Expanded Uncertainty (95% Confidence interval)		k				20.32	20.06	

## 4. Measurement System

### 4.1 Specific Absorption Rate (SAR) Definition

SAR is related to the rate at which energy is absorbed per unit mass in an object exposed to a radio field. The SAR distribution in a biological body is complicated and is usually carried out by experimental techniques or numerical modeling. The standard recommends limits for two tiers of groups, occupational/controlled and general population/uncontrolled, based on a person’s awareness and ability to exercise control over his or her exposure. In general, occupational/controlled exposure limits are higher than the limits for general population/uncontrolled.

The SAR definition is the time derivative (rate) of the incremental energy (dW) absorbed by (dissipated in) an incremental mass (dm) contained in a volume element (dv) of a given density (ρ). The equation description is as below:

$$SAR = \frac{d}{dt} \left( \frac{dW}{dm} \right) = \frac{d}{dt} \left( \frac{dW}{\rho dv} \right)$$

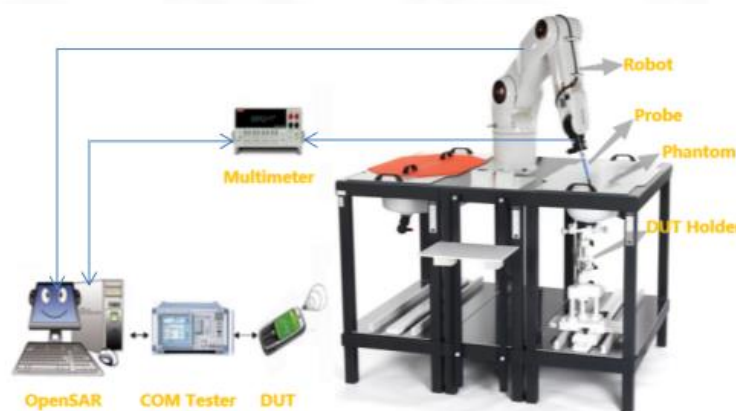
SAR is expressed in units of Watts per kilogram (W/kg) SAR measurement can be related to the electrical field in the tissue by

$$SAR = \frac{\sigma E^2}{\rho}$$

Where: σ is the conductivity of the tissue,  
ρ is the mass density of the tissue and E is the RMS electrical field strength.

### 4.2 MVG SAR System

#### 4.2.1 SAR system diagram



#### 4.2.2 Robot



- A standard high precision 6-axis robot (Denso) with teaches pendant with Scanning System
- It must be able to scan all the volume of the phantom to evaluate the tridimensional distribution of SAR.
  - Must be able to set the probe orthogonal of the surface of the phantom ( $\pm 30^\circ$ ).
  - Detects stresses on the probe and stop itself if necessary to keep the integrity of the probe.

#### 4.2.3 E-Field Probe

For the measurements, the Specific Dosimetric SSE2 E-Field Probe with following specifications is used:

- Dynamic range: 0.01-100 W/kg
- Tip diameter: 2mm for SSE2
- Distance between probe tip and sensor centre: 1mm for SSE2
- Distance between sensor centre and the inner phantom surface: 2mm for  $f \geq 4\text{GHz}$ .
- Probe linearity:  $< 0.25\text{dB}$ .
- Axial Isotropy:  $< 0.25\text{dB}$ .
- Spherical Isotropy:  $< 0.50\text{dB}$ .
- Calibration range: 150 to 6000 MHz for head & body simulating liquid
- Angle between probe axis (evaluation axis) and surface normal line: less than  $20^\circ$ .



#### 4.2.4 Phantoms

##### **SAM Phantom**

For the measurements the Specific Anthropomorphic Mannequin (SAM) defined by the IEEE SCC-34/SC2 group is used. The probe scanning of the E-Field is done in the 2 halves of the normalized head. The normalized shape of the phantom corresponds to the dimensions of 90% of an adult head size. It enables the dosimetric evaluation of left and right-hand phone usage and includes an additional flat phantom part for the simplified body performance check. The phantom set-up includes a cover, which prevents the evaporation of the liquid.



**SAM Phantom**

The thickness of the phantom amounts to  $2\text{ mm} \pm 0.2\text{ mm}$ . The materials for the phantom do not affect the radiation of the device under test (DUT) :  $\epsilon_r' < 5$   
The head is filled with tissue simulating liquid. The hand do not have to be modeled.

**TWIN SAM phantom**

	Mechanical	Electrical	
Overall thickness	$2 \pm 0.2\text{ mm}$ (except ear area)	Relative permittivity	3.4
Dimensions	1000 mm(L) x 500 mm(W) x 200 mm(H)	Loss tangent	0.02
Maximum volume	27 L		
Material	Fiberglass based		

**ELLIPTICAL Phantom**

The phantom is for Body performance check filled with tissue-equivalent liquid to a depth of at least 150 mm, whose shell material is resistant to damage or reaction with tissue-equivalent liquid chemicals.



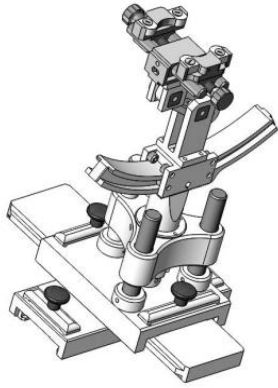
**ELLI Phantom**

The shape of the phantom is an ellipse with length  $600\text{mm} \pm 5\text{mm}$  and width  $400\text{mm} \pm 5\text{mm}$ . The phantom shell is made of low-loss and low-permittivity material, having loss tangent  $\tan \delta \leq 0.05$  and relative permittivity:  
 $\epsilon_r' \leq 5$  for  $f \leq 3\text{ GHz}$   
 $3 \leq \epsilon_r' \leq 5$  for  $f > 3\text{ GHz}$   
 The thickness of the bottom-wall of the flat phantom is 2.0 mm with a tolerance of  $\pm 0.2\text{ mm}$ .

**Technical & mechanical characteristics**

Shell thickness	$2\text{ mm} \pm 0.2\text{ mm}$
Filling volume	25 L
Dimensions	600 mm x 400 mm x 200mm
Permittivity	4.4
Loss tangent	0.017

#### 4.2.5 Device Holder



System Material	Permittivity	Loss tangent
Delrin	3.7	0.005

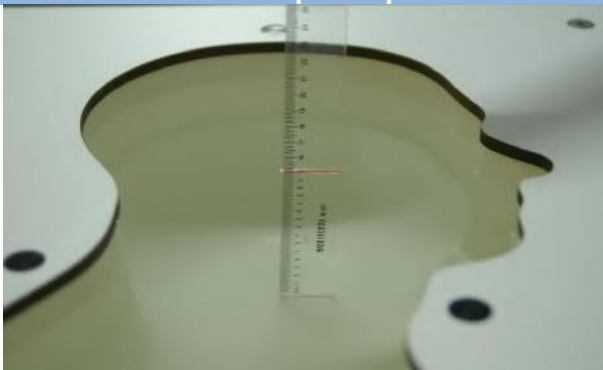
*(The positioning system allows obtaining cheek and tilting position with a very good accuracy. In compliance with CENELEC, the tilt angle uncertainty is lower than 1°.)*

System Material	Permittivity	Loss tangent
PMMA	2.9	0.028

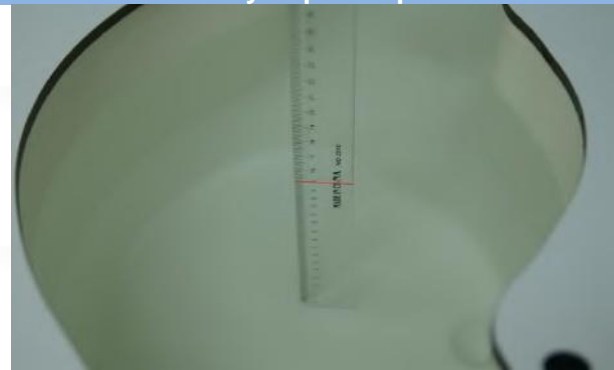
#### 4.2.6 Simulating Liquid

For SAR measurement of the field distribution inside the phantom, the phantom must be filled with homogeneous tissue simulating liquid to a depth of at least 15 cm. For head SAR testing, the liquid height from the ear reference point (ERP) of the phantom to the liquid top surface is larger than 15 cm. For body SAR testing, the liquid height from the center of the flat phantom to the liquid top surface is larger than 15 cm. The nominal dielectric values of the tissue simulating liquids in the phantom and the tolerance of 5%.

Head Liquid Depth



Body Liquid Depth



The following table gives the recipes for tissue simulating liquid and the theoretical Conductivity/Permittivity.

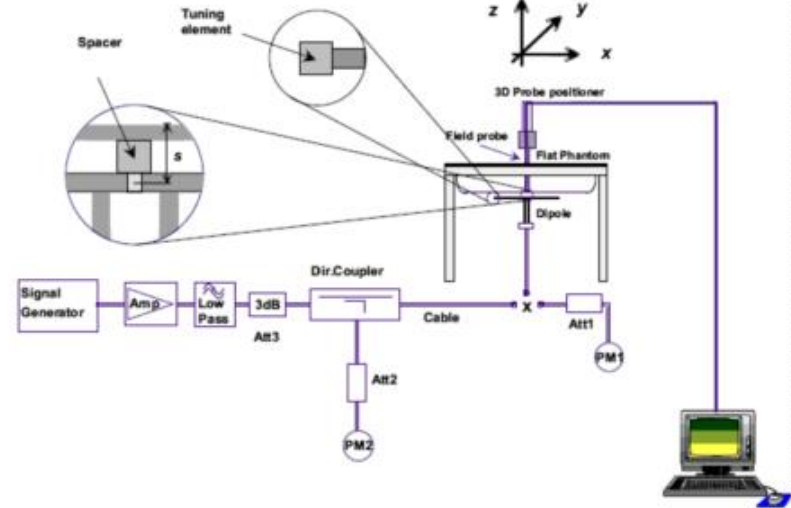
Head (Reference IEEE1528)								
Frequency (MHz)	Water (%)	Sugar (%)	Cellulose (%)	Salt (%)	Preventol (%)	DGBE (%)	Conductivity $\sigma$ (S/m)	Permittivity $\epsilon$
750	41.1	57.0	0.2	1.4	0.2	0	0.89	41.9
835	40.3	57.9	0.2	1.4	0.2	0	0.90	41.5
900	40.3	57.9	0.2	1.4	0.2	0	0.97	41.5
1800, 1900, 2000	55.2	0	0	0.3	0	44.5	1.4	40.0
2450	55.0	0	0	0.1	0	44.9	1.80	39.2
2600	54.9	0	0	0.1	0	45.0	1.96	39.0
Frequency (MHz)	Water (%)	Hexyl Carbitol (%)			Triton X-100 (%)		Conductivity $\sigma$ (S/m)	Permittivity $\epsilon$
5200	62.52	17.24			17.24		4.66	36.0
5800	62.52	17.24			17.24		5.27	35.3
Body (From instrument manufacturer)								
Frequency (MHz)	Water (%)	Sugar (%)	Cellulose (%)	Salt (%)	Preventol (%)	DGBE (%)	Conductivity $\sigma$ (S/m)	Permittivity $\epsilon$
750	51.7	47.2	0	0.9	0.1	0	0.96	55.5
835	50.8	48.2	0	0.9	0.1	0	0.97	55.2
900	50.8	48.2	0	0.9	0.1	0	1.05	55.0
1800, 1900, 2000	70.2	0	0	0.4	0	29.4	1.52	53.3
2450	68.6	0	0	0.1	0	31.3	1.95	52.7
2600	68.2	0	0	0.1	0	31.7	2.16	52.5
Frequency(MHz)	Water	DGBE (%)			Salt (%)		Conductivity $\sigma$ (S/m)	Permittivity $\epsilon$
5200	78.60	21.40			/		5.30	49.00
5800	78.50	21.40			0.1		6.00	48.20

## 5. System Verification

### 5.1 Purpose of System Check

The system performance check verifies that the system operates within its specifications. System and operator errors can be detected and corrected. It is recommended that the system performance check be performed prior to any usage of the system in order to guarantee reproducible results. The system performance check uses normal SAR measurements in a simplified setup with a well characterized source. The setup was selected to give a high sensitivity to all parameters that might fail or vary over time. The system check does not intend to replace the calibration of the components, but indicates situations where the system uncertainty is exceeded due to drift or failure.

## 5.2 System Check Setup



## 6. TEST POSITION CONFIGURATIONS

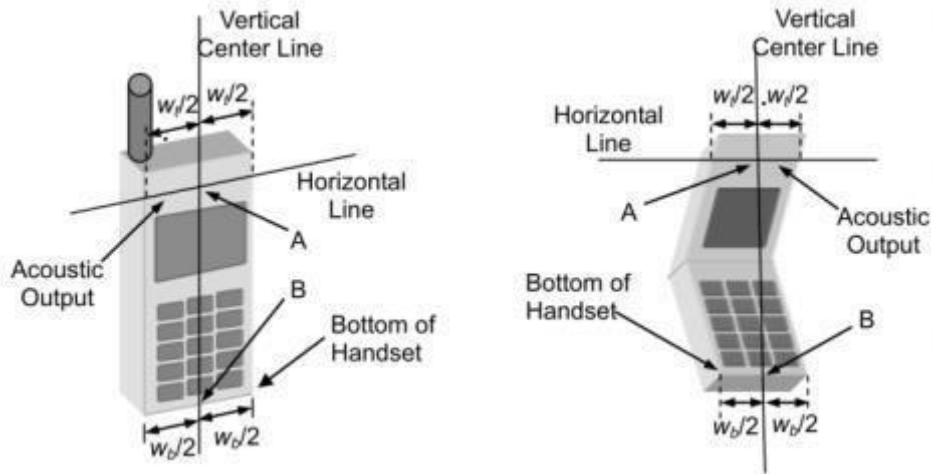
According to KDB 648474 D04 Handset, handsets are tested for SAR compliance in head, body-worn accessory and other use configurations described in the following subsections.

### 6.1 Head Exposure Conditions

Head exposure is limited to next to the ear voice mode operations. Head SAR compliance is tested according to the test positions defined in IEEE Std 1528-2013 using the SAM phantom illustrated as below.

#### 6.1.1 Two Imaginary Lines on the Handset

- The vertical center line passes through two points on the front side of the handset - the midpoint of the width  $w_t$  of the handset at the level of the acoustic output, and the midpoint of the width  $w_b$  of the bottom of the handset.
- The horizontal line is perpendicular to the vertical center line and passes through the center of the acoustic output. The horizontal line is also tangential to the face of the handset at point A.
- The two lines intersect at point A. Note that for many handsets, point A coincides with the center of the acoustic output; however, the acoustic output may be located elsewhere on the horizontal line. Also note that the vertical center line is not necessarily parallel to the front face of the handset, especially for clamshell handsets, handsets with flip covers, and other irregularly shaped handsets.



### 6.1.2 Two Imaginary Lines on the Handset

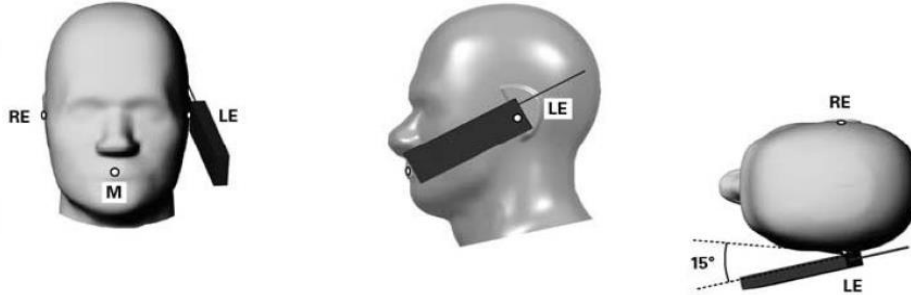
- (a) To position the device with the vertical center line of the body of the device and the horizontal line crossing the center piece in a plane parallel to the sagittal plane of the phantom. While maintaining the device in this plane, align the vertical center line with the reference plane containing the three ear and mouth reference point (M: Mouth, RE: Right Ear, and LE: Left Ear) and align the center of the ear piece with the line RE-LE.
- (b) To move the device towards the phantom with the ear piece aligned with the line LE-RE until the phone touched the ear. While maintaining the device in the reference plane and maintaining the phone contact with the ear, move the bottom of the phone until any point on the front side is in contact with the cheek of the phantom or until contact with the ear is lost.





### 6.1.3 Titled Position

- (a) To position the device in the “cheek” position described above.
- (b) While maintaining the device the reference plane described above and pivoting against the ear, moves it outward away from the mouth by an angle of 15 degrees or until contact with the ear is lost.

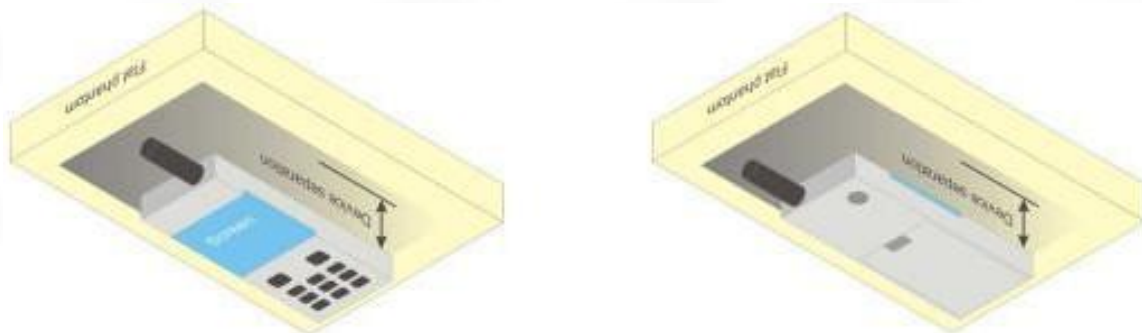


## 6.2 Body-worn Position Conditions

Body-worn accessory exposure is typically related to voice mode operations when handsets are carried in body-worn accessories. The body-worn accessory procedures in KDB 447498 are used to test for body-worn accessory SAR compliance, without a headset connected to it. This enables the test results for such configuration to be compatible with that required for hotspot mode when the body-worn accessory test separation distance is greater than or equal to that required for hotspot mode. When the reported SAR for a body-worn accessory.

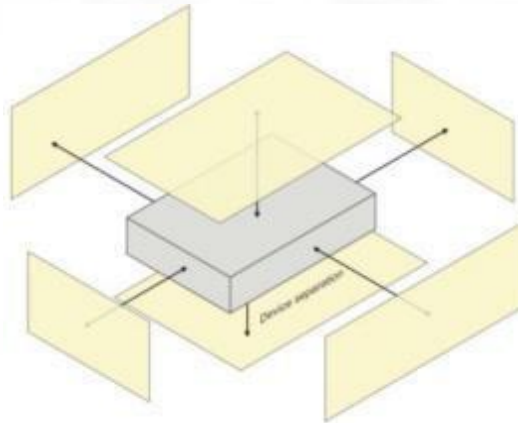
Body-worn accessories that do not contain metallic or conductive components may be tested according to worst-case exposure configurations, typically according to the smallest test separation distance required for the group of body-worn accessories with similar operating and exposure characteristics. All body-worn accessories containing metallic components are tested in conjunction with the host device.

Body-worn accessory SAR compliance is based on a single minimum test separation distance for all wireless and operating modes applicable to each body-worn accessory used by the host, and according to the relevant voice and/or data mode transmissions and operations. If a body-worn accessory supports voice only operations in its normal and expected use conditions, testing of data mode for body-worn compliance is not required. A conservative minimum test separation distance for supporting off-the-shelf body-worn accessories that may be acquired by users of consumer handsets is used to test for body-worn accessory SAR compliance. This distance is determined by the handset manufacturer, according to the requirements of Supplement C 01-01. Devices that are designed to operate on the body of users using lanyards and straps, or without requiring additional body-worn accessories, will be tested using a conservative minimum test separation distance  $\leq 5$  mm to support compliance.



### 6.3 Hotspot Mode Exposure Position Conditions

For handsets that support hotspot mode operations, with wireless router capabilities and various web browsing functions, the relevant hand and body exposure conditions are tested according to the hotspot SAR procedures in KDB 941225. A test separation distance of 10 mm is required between the phantom and all surfaces and edges with a transmitting antenna located within 25 mm from that surface or edge. When the form factor of a handset is smaller than 9 cm x 5 cm, a test separation distance of 5 mm (instead of 10 mm) is required for testing hotspot mode. When the separation distance required for body-worn accessory testing is larger than or equal to that tested for hotspot mode, in the same wireless mode and for the same surface of the phone, the hotspot mode SAR data may be used to support body-worn accessory SAR compliance for that particular configuration (surface).



### 6.4 Product Specific 10g Exposure Consideration

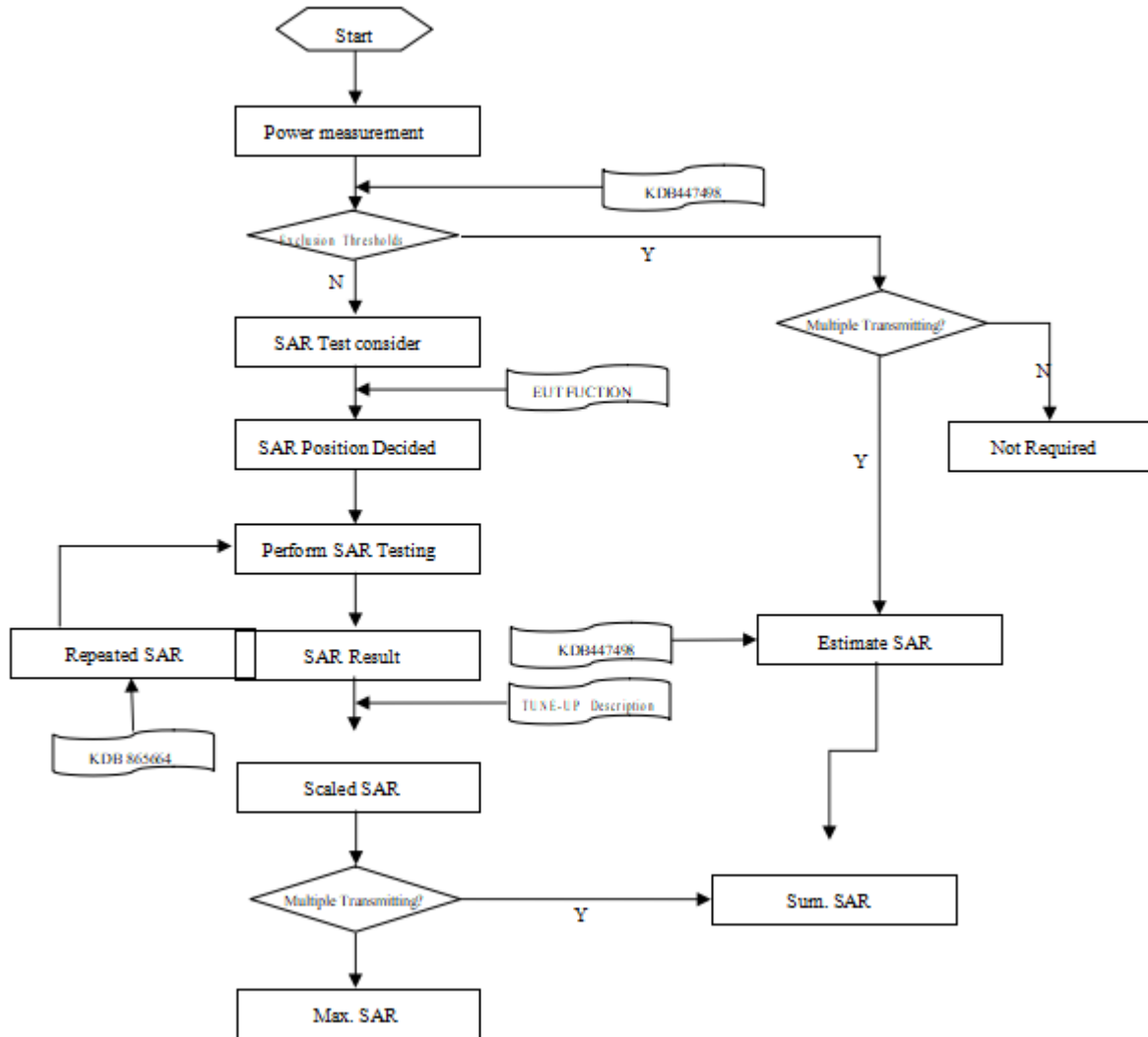
According with FCC KDB 648474 D04, for smart phones with a display diagonal dimension > 15.0 cm or an overall diagonal dimension > 16.0 cm that provide similar mobile web access and multimedia support found in mini-tablets or UMPC mini-tablets that support voice calls next to the ear, unless it is confirmed otherwise through KDB inquiries, the following phablet procedures should be applied to evaluate SAR compliance for each applicable wireless modes and frequency band. Devices marketed as phablets, regardless of form factors and operating characteristics must be tested as a phablet to determine SAR compliance;

The UMPC mini-tablet procedures must also be applied to test the SAR of all surfaces and edges with an antenna located at  $\leq 25$  mm from that surface or edge, in direct contact with a flat phantom, for 10-g extremity SAR according to the body-equivalent tissue dielectric parameters in KDB 865664 to address interactive hand use exposure conditions. The UMPC mini-tablet 1-g SAR at 5 mm is not required. When hotspot mode applies, 10-g extremity SAR is required only for the surfaces and edges with hotspot mode 1-g reported SAR > 1.2 W/kg.

## 7. Measurement Procedure

### 7.1 Measurement Process Diagram

Body SAR



## 7.2 SAR Scan General Requirement

Probe boundary effect error compensation is required for measurements with the probe tip closer than half a probe tip diameter to the phantom surface. Both the probe tip diameter and sensor offset distance must satisfy measurement protocols; to ensure probe boundary effect errors are minimized and the higher fields closest to the phantom surface can be correctly measured and extrapolated to the phantom surface for computing 1 g SAR. Tolerances of the post-processing algorithms must be verified by the test laboratory for the scan resolutions used in the SAR measurements, according to the reference distribution functions specified in IEEE Std 1528-2013.

		≤3GHz	>3GHz
Maximum distance from closest measurement point (geometric center of probe sensors) to phantom surface		5±1 mm	$\frac{1}{2} \delta \cdot \ln(2) \pm 0.5$ mm
Maximum probe angle from probe axis to phantom surface normal at the measurement location		30°±1°	20°±1°
Maximum area scan spatial resolution: Δx Area , Δy Area		≤ 2 GHz: ≤ 15 mm 2 – 3 GHz: ≤ 12 mm	3–4 GHz: ≤ 12 mm 4 – 6 GHz: ≤ 10 mm
		When the x or y dimension of the test device, in the measurement plane orientation, is smaller than the above, the measurement resolution must be ≤ the corresponding x or y dimension of the test device with at least one measurement point on the test device.	
Maximum zoom scan spatial resolution: Δx Zoom , Δy Zoom		≤ 2 GHz: ≤ 8 mm 2–3 GHz: ≤ 5 mm*	3–4 GHz: ≤ 5 mm* 4 – 6 GHz: ≤ 4 mm*
Maximum zoom scan spatial resolution, normal to phantom surface	uniform grid: Δz Zoom (n)	≤ 5 mm	3–4 GHz: ≤ 4 mm
			4–5 GHz: ≤ 3 mm
	graded grid	Δz Zoom (1): between 1st two points closest to phantom surface	5–6 GHz: ≤ 2 mm
			3–4 GHz: ≤ 3 mm 4–5 GHz: ≤ 2.5 mm
	Δz Zoom (n>1): between subsequent points	≤ 1.5·Δz Zoom (n-1)	
Minimum zoom scan volume	x, y, z	≥30 mm	3–4 GHz: ≥ 28 mm
			4–5 GHz: ≥ 25 mm
			5–6 GHz: ≥ 22 mm
Note: 1. δ is the penetration depth of a plane-wave at normal incidence to the tissue medium; see draft standard IEEE P1528- 2011 for details. 2. * When zoom scan is required and the reported SAR from the area scan based 1 g SAR estimation procedures of KDB 447498 is ≤ 1.4 W/kg, ≤ 8 mm, ≤ 7 mm and ≤ 5 mm zoom scan resolution may be applied, respectively, for 2 GHz to 3GHz, 3 GHz to 4 GHz and 4 GHz to 6 GHz.			

### 7.3 Measurement Procedure

The following steps are used for each test position

- a. Establish a call with the maximum output power with a base station simulator. The connection between the mobile and the base station simulator is established via air interface
- b. Measurement of the local E-field value at a fixed location. This value serves as a reference value for calculating a possible power drift.
- c. Measurement of the SAR distribution with a grid of 8 to 16mm \* 8 to 16 mm and a constant distance to the inner surface of the phantom. Since the sensors cannot directly measure at the inner phantom surface, the values between the sensors and the inner phantom surface are extrapolated. With these values the area of the maximum SAR is calculated by an interpolation scheme.
- d. Around this point, a cube of 30 \* 30 \* 30 mm or 32 \* 32 \* 32 mm is assessed by measuring 5 or 8 \* 5 or 8\*4 or 5 mm. With these data, the peak spatial-average SAR value can be calculated.

### 7.4 Area & Zoom Scan Procedure

First Area Scan is used to locate the approximate location(s) of the local peak SAR value(s). The measurement grid within an Area Scan is defined by the grid extent, grid step size and grid offset. Next, in order to determine the EM field distribution in a three-dimensional spatial extension, Zoom Scan is required. The Zoom Scan is performed around the highest E-field value to determine the averaged SAR-distribution over 10 g. Area scan and zoom scan resolution setting follows KDB 865664 D01v01r04 quoted below.

When the 1 g SAR of the highest peak is within 2 dB of the SAR limit, additional zoom scans are required for other peaks within 2 dB of the highest peak that have not been included in any zoom scan to ensure there is no increase in SAR.

## 8. Conducted RF Output Power

### 8.1 Wi-Fi

Ant. 1						
Band (GHz)	Mode	Channel	Freq. (MHz)	Average Power (dBm)	Maximum Tune-up(dBm)	SAR Test Require.
2.4 (2.4~2.4835)	802.11b	1	2412	<b>12.22</b>	<b>12.50</b>	Yes
		6	2437	11.95	12.00	No
		11	2462	10.82	11.00	No
	802.11g	1	2412	14.53	15.00	No
		6	2437	14.20	14.50	No
		11	2462	12.94	13.00	No
	802.11n(HT20)	1	2412	14.49	14.50	No
		6	2437	14.15	14.50	No
		11	2462	12.85	13.00	No
	802.11n(HT40)	3	2422	11.84	12.00	No
		6	2437	14.80	15.00	No
		9	2452	13.09	13.50	No
Ant. 2						
Band (GHz)	Mode	Channel	Freq. (MHz)	Average Power (dBm)	Maximum Tune-up(dBm)	SAR Test Require.
2.4 (2.4~2.4835)	802.11b	1	2412	12.77	13.00	No
		6	2437	<b>12.92</b>	<b>13.00</b>	Yes
		11	2462	12.66	13.00	No
	802.11g	1	2412	15.65	16.00	No
		6	2437	15.96	16.00	No
		11	2462	15.56	16.00	No
	802.11n(HT20)	1	2412	15.54	16.00	No
		6	2437	15.80	16.00	No
		11	2462	15.42	15.50	No
	802.11n(HT40)	3	2422	13.97	14.00	No
		6	2437	15.66	16.00	No
		9	2452	14.10	14.50	No
MIMO						
Band (GHz)	Mode	Channel	Freq. (MHz)	Average Power (dBm)	Maximum Tune-up(dBm)	SAR Test Require.
2.4 (2.4~2.4835)	802.11n(HT20)	1	2412	18.06	18.50	No
		6	2437	18.06	18.50	No
		11	2462	17.33	17.50	No
	802.11n(HT40)	3	2422	16.04	16.50	No
		6	2437	<b>18.26</b>	<b>18.50</b>	Yes
		9	2452	16.63	17.00	No

Note: SAR is not required for the following 2.4 GHz OFDM conditions as the highest reported SAR for DSSS is adjusted by the ratio of OFDM to DSSS specified maximum output power and the adjusted SAR is  $\leq 1.2$ W/kg.

Ant. 1						
Band (GHz)	Mode	Channel	Freq. (MHz)	Average Power (dBm)	Maximum Tune-up(dBm)	SAR Test Require.
U-NII-1 (5.150~5.250)	802.11a	36	5180	10.56	11.00	No
		48	5240	10.35	10.50	No
	802.11n(HT20)	36	5180	10.34	10.50	No
		48	5240	9.66	10.00	No
	802.11n(HT40)	38	5190	10.93	11.00	No
		46	5230	<b>11.57</b>	<b>12.00</b>	Yes
	802.11ac(VHT40)	38	5190	9.45	9.50	No
		46	5230	8.99	9.00	No
Ant. 2						
Band (GHz)	Mode	Channel	Freq. (MHz)	Average Power (dBm)	Maximum Tune-up(dBm)	SAR Test Require.
U-NII-1 (5.150~5.250)	802.11a	36	5180	6.84	7.00	No
		48	5240	7.17	7.50	No
	802.11n(HT20)	36	5180	9.00	9.00	No
		48	5240	7.08	7.50	No
	802.11n(HT40)	38	5190	5.74	6.00	No
		46	5230	6.79	7.00	No
	802.11ac(VHT40)	38	5190	<b>9.03</b>	<b>9.50</b>	Yes
		46	5230	8.57	9.00	No
MIMO						
Band (GHz)	Mode	Channel	Freq. (MHz)	Average Power (dBm)	Maximum Tune-up(dBm)	SAR Test Require.
U-NII-1 (5.150~5.250)	802.11a	36	5180	13.80	14.00	No
		48	5240	13.58	14.00	No
	802.11n(HT20)	36	5180	13.74	14.00	No
		48	5240	12.67	13.00	No
	802.11n(HT40)	38	5190	13.81	14.00	No
		46	5230	<b>15.04</b>	<b>15.50</b>	Yes
	802.11ac(VHT40)	38	5190	13.91	14.00	No
		46	5230	13.36	13.50	No

Ant. 1						
Band (GHz)	Mode	Channel	Freq. (MHz)	Average Power (dBm)	Maximum Tune-up(dBm)	SAR Test Require.
U-NII-2a (5.250~5.350)	802.11a	52	5260	10.96	11.00	No
		64	5320	10.65	11.00	No
	802.11n(HT20)	52	5260	10.57	11.00	No
		64	5320	9.59	10.00	No
	802.11n(HT40)	54	5270	10.29	10.50	No
		62	5310	<b>11.91</b>	<b>12.00</b>	Yes
	802.11ac(VHT40)	54	5270	11.69	12.00	No
		62	5310	11.24	11.50	No
Ant. 2						
Band (GHz)	Mode	Channel	Freq. (MHz)	Average Power (dBm)	Maximum Tune-up(dBm)	SAR Test Require.
U-NII-2a (5.250~5.350)	802.11a	52	5260	11.36	11.50	No
		64	5320	11.18	11.50	No
	802.11n(HT20)	52	5260	11.47	11.50	No
		64	5320	10.35	10.50	No
	802.11n(HT40)	54	5270	11.78	12.00	No
		62	5310	<b>13.13</b>	<b>13.50</b>	Yes
	802.11ac(VHT40)	54	5270	9.78	10.00	No
		62	5310	9.18	9.50	No
MIMO						
Band (GHz)	Mode	Channel	Freq. (MHz)	Average Power (dBm)	Maximum Tune-up(dBm)	SAR Test Require.
U-NII-2a (5.250~5.350)	802.11a	52	5260	14.17	14.50	No
		64	5320	13.93	14.00	No
	802.11n(HT20)	52	5260	14.05	14.50	No
		64	5320	13.00	13.00	No
	802.11n(HT40)	54	5270	14.11	14.50	No
		62	5310	<b>15.57</b>	<b>16.00</b>	Yes
	802.11ac(VHT40)	54	5270	13.85	14.00	No
		62	5310	13.34	13.50	No



Ant. 1						
Band (GHz)	Mode	Channel	Freq. (MHz)	Average Power (dBm)	Maximum Tune-up(dBm)	SAR Test Require.
U-NII-3 (5.725~5.850)	802.11a	100	5500	10.35	10.50	No
	802.11n(HT20)	140	5700	10.00	10.00	No
	802.11n(HT40)	102	5510	10.58	11.00	No
		134	5670	<b>11.36</b>	<b>11.50</b>	Yes
802.11ac(VHT80)	122	5610	11.21	11.50	No	
Ant. 2						
Band (GHz)	Mode	Channel	Freq. (MHz)	Average Power (dBm)	Maximum Tune-up(dBm)	SAR Test Require.
U-NII-3 (5.725~5.850)	802.11a	100	5500	11.35	11.50	No
	802.11n(HT20)	140	5700	9.90	10.00	No
	802.11n(HT40)	102	5510	12.18	12.50	No
		134	5670	<b>13.17</b>	<b>13.50</b>	Yes
802.11ac(VHT80)	122	5610	9.34	9.50	No	
MIMO						
Band (GHz)	Mode	Channel	Freq. (MHz)	Average Power (dBm)	Maximum Tune-up(dBm)	SAR Test Require.
U-NII-3 (5.725~5.850)	802.11a	100	5500	13.89	14.00	No
	802.11n(HT20)	140	5700	12.96	13.00	No
	802.11n(HT40)	102	5510	14.46	14.50	No
		134	5670	<b>15.37</b>	<b>15.50</b>	Yes
802.11ac(VHT80)	122	5610	13.39	13.50	No	

## 8.2 Bluetooth

EDR	Mode	Maximum Tune-up(dBm)	Average Conducted Output Power (dBm)		
			0	39	78
			2402MHz	2441MHz	2480MHz
	GFSK	-4.00	-4.12	-4.93	-5.39
	$\pi/4$ QPSK	-7.00	-7.49	-7.82	-7.96
	8DPSK	-7.00	-7.40	-7.84	-8.08

Channel	Frequency (GHz)	Max. Tune-up Power (dBm)	Max. Power (mW)	Test distance (mm)	Exclusion thresholds for 1-g SAR(mW)	RF exposure evaluation required
0	2.402	-4.00	0.40	0	10	No

**Note**

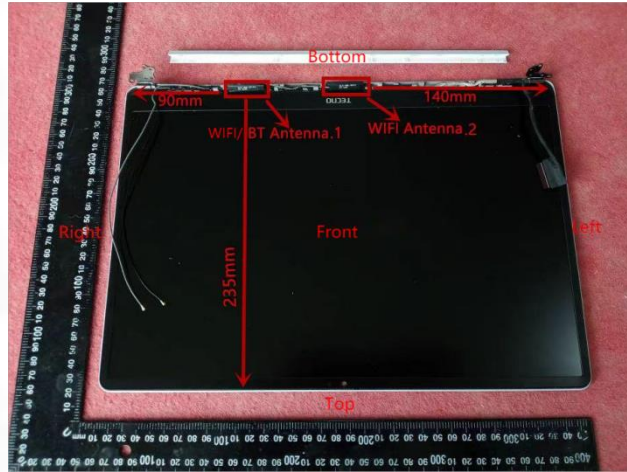
- Per KDB 447498 D01 General RF Exposure Guidance v06, the 1-g SAR test exclusion thresholds for 300 MHz to 6 GHz at *test separation distances*  $\leq 40$  cm are determined by:

MHz	5	10	15	20	25	mm
150	39	77	116	155	194	<i>SAR Test Exclusion Threshold (mW)</i>
300	27	55	82	110	137	
450	22	45	67	89	112	
835	16	33	49	66	82	
900	16	32	47	63	79	
1500	12	24	37	49	61	
1900	11	22	33	44	54	
2450	10	19	29	38	48	
3600	8	16	24	32	40	
5200	7	13	20	26	33	
5400	6	13	19	26	32	
5800	6	12	19	25	31	

- \*When the minimum test separation distance is  $< 5$  mm, a distance of 5 mm is applied to determine estimated SAR.
- Per KDB 248227 D01 v02r02, choose the highest output power channel to test SAR and determine further SAR exclusion.
- The output power of all data rate were prescan, just the worst case (the lowest data rate) of all mode were shown in report.

## 9. Test Exclusion Consideration

Antenna information :



Antenna	Positions for SAR test					
	Front Side	Back Side	Left Edge	Right Edge	Top Edge	Bottom Edge
WLAN/BT Ant.1	Yes	Yes	No	No	No	No
WLAN Ant.2	Yes	Yes	No	No	No	No

Note:

Per KDB 616217 Laptop host platform test requirements: When antennas are incorporated in the display section of a laptop computer, SAR is required for the surface of the display. Provided tablet use conditions are not supported by the laptop computer, SAR tests for bystander exposure from the edges of the keyboard of laptop computers are generally not required. And we don't need to test the bottom side for its undetachable characteristic.

### 9.1 SAR Test Exclusion Consideration Table

Per KDB 447498 requires when the standalone SAR test exclusion of section 4.3.1 is applied to an antenna that transmits simultaneously with other antennas, the standalone SAR must be estimated according to the following format to determine simultaneous transmission SAR test exclusion:

$$(\text{max.power of channel, including tune-up tolerance, mW}) / (\text{min. test separation distance, mm}) \cdot [\sqrt{f(\text{GHz})} / x]$$

W/kg for test separation distances  $\leq 50$  mm;

where  $x = 7.5$  for 1-g SAR, and  $x = 18.75$  for 10-g SAR.

0.4 W/Kg for 1-g SAR and 1.0 W/kg for 10-g SAR, when the test separation distances is  $> 50$  mm

Channel	Frequency (GHz)	Max. Tune-up Power (dBm)	Max. Power (mW)	Test distance (mm)	Estimated SAR (W/Kg)
0	2.402	-4.00	0.40	0	0.016

# 10. Test Result

WLAN-2.4g(gap 0mm)													
Mode	Position	Dist. (mm)	Ch.	Freq. (MHz)	Power Drift (%)	1g Meas. SAR (W/kg)	Duty cycle (%)	Duty cycle Factor	Meas. Power (dBm)	Max. tune-up power (dBm)	Scaling Factor	1g Scaled SAR (W/kg)	Meas. No.
2.4g Wifi 802.11b ANT1	Front	0	1	2412	-4.580	0.220	100.00	1.000	12.22	12.50	1.067	0.235	/
	Back	0	1	2412	1.510	0.180	100.00	1.000	12.22	12.50	1.067	0.192	/
2.4g Wifi 802.11b ANT2	Front	0	6	2437	0.620	0.201	100.00	1.000	12.92	13.00	1.019	0.205	/
	Back	0	6	2437	-1.550	0.156	100.00	1.000	12.92	13.00	1.019	0.159	/
2.4g Wifi 802.11n(HT40) MIMO-ANT1 side	Front	0	6	2437	-3.570	0.330	100.00	1.000	18.26	18.50	1.057	<b>0.349</b>	1#
	Back	0	6	2437	1.120	0.208	100.00	1.000	18.26	18.50	1.057	0.220	/
2.4g Wifi 802.11n(HT40) MIMO-ANT2 side	Front	0	6	2437	2.780	0.309	100.00	1.000	18.26	18.50	1.057	0.327	/
	Back	0	6	2437	-0.340	0.200	100.00	1.000	18.26	18.50	1.057	0.211	/
WLAN-5.2g(Body gap 0mm)													
Mode	Position	Dist. (mm)	Ch.	Freq. (MHz)	Power Drift (%)	1g Meas. SAR (W/kg)	Duty cycle (%)	Duty cycle Factor	Meas. Power (dBm)	Max. tune-up power (dBm)	Scaling Factor	1g Scaled SAR (W/kg)	Meas. No.
5.2g Wifi 802.11n(HT40) ANT1	Front	0	46	5230	-4.650	0.136	100.00	1.000	11.57	12.00	1.104	0.150	/
	Back	0	46	5230	1.260	0.101	100.00	1.000	11.57	12.00	1.104	0.112	/
5.2g Wifi 802.11ac(VHT40) ANT2	Front	0	38	5190	-2.880	0.120	100.00	1.000	9.03	9.50	1.114	0.134	/
	Back	0	38	5190	-2.450	0.096	100.00	1.000	9.03	9.50	1.114	0.107	/
5.2g Wifi 802.11n(HT40) MIMO-ANT1 side	Front	0	46	5230	-3.030	0.201	100.00	1.000	15.04	15.50	1.112	<b>0.224</b>	2#
	Back	0	46	5230	-1.600	0.150	100.00	1.000	15.04	15.50	1.112	0.167	/
5.2g Wifi 802.11n(HT40) MIMO-ANT2 side	Front	0	46	5230	2.502	0.188	100.00	1.000	15.04	15.50	1.112	0.209	/
	Back	0	46	5230	1.350	0.140	100.00	1.000	15.04	15.50	1.112	0.156	/
WLAN-5.4g(gap 0mm)													
Mode	Position	Dist. (mm)	Ch.	Freq. (MHz)	Power Drift (%)	1g Meas. SAR (W/kg)	Duty cycle (%)	Duty cycle Factor	Meas. Power (dBm)	Max. tune-up power (dBm)	Scaling Factor	1g Scaled SAR (W/kg)	Meas. No.
5.4g Wifi 802.11n(HT40) ANT1	Front	0	62	5310	-3.770	0.250	100.00	1.000	11.91	12.00	1.021	0.255	/
	Back	0	62	5310	-1.420	0.201	100.00	1.000	11.91	12.00	1.021	0.205	/
5.4g Wifi 802.11n(HT40) ANT2	Front	0	62	5310	-1.340	0.222	100.00	1.000	13.13	13.50	1.089	0.242	/
	Back	0	62	5310	-3.310	0.196	100.00	1.000	13.13	13.50	1.089	0.213	/
5.4g Wifi 802.11n(HT40) MIMO-ANT1 side	Front	0	62	5310	-1.250	0.488	100.00	1.000	15.57	16.00	1.104	<b>0.539</b>	3#
	Back	0	62	5310	2.210	0.310	100.00	1.000	15.57	16.00	1.104	0.342	/
5.4g Wifi 802.11n(HT40) MIMO-ANT2 side	Front	0	62	5310	1.490	0.450	100.00	1.000	15.57	16.00	1.104	0.497	/
	Back	0	62	5310	-0.690	0.300	100.00	1.000	15.57	16.00	1.104	0.331	/
WLAN-5.8g(gap 0mm)													
Mode	Position	Dist. (mm)	Ch.	Freq. (MHz)	Power Drift (%)	1g Meas. SAR (W/kg)	Duty cycle (%)	Duty cycle Factor	Meas. Power (dBm)	Max. tune-up power (dBm)	Scaling Factor	1g Scaled SAR (W/kg)	Meas. No.
5.8g Wifi 802.11n(HT40) ANT1	Front	0	134	5670	-0.240	0.185	100.00	1.000	11.36	11.50	1.033	0.191	/
	Back	0	134	5670	-1.200	0.122	100.00	1.000	11.36	11.50	1.033	0.126	/
5.8g Wifi 802.11n(HT40) ANT2	Front	0	134	5670	1.110	0.155	100.00	1.000	13.17	13.50	1.079	0.167	/
	Back	0	134	5670	0.800	0.118	100.00	1.000	13.17	13.50	1.079	0.127	/
5.8g Wifi 802.11n(HT40) MIMO-ANT1 side	Front	0	134	5670	-1.550	0.397	100.00	1.000	15.37	15.50	1.030	<b>0.409</b>	4#
	Back	0	134	5670	-1.100	0.266	100.00	1.000	15.37	15.50	1.030	0.274	/
5.8g Wifi 802.11n(HT40) MIMO-ANT2 side	Front	0	134	5670	2.620	0.385	100.00	1.000	15.37	15.50	1.030	0.397	/
	Back	0	134	5670	-0.553	0.252	100.00	1.000	15.37	15.50	1.030	0.260	/

**Note:**

- The maximum SAR Value of each test band is marked bold.
- SAR plot is provided only for the highest measured SAR in each exposure configuration, wireless mode and frequency band combination.
- Per KDB 447498 D01 v06, for each exposure position, if the highest output power channel Reported SAR ≤ 0.8W/kg, other channels SAR testing is not necessary.
- Per KDB 447498 D01 v06, body-supported use is evaluated with the device positioned at 0mm from a flat phantom filled with body tissue-equivalent medium.
- Per KDB 447498 D01 v06, the report SAR is measured SAR value adjusted for maximum tune-up tolerance. Scaling Factor=10<sup>4</sup>\*(tune-up limit power(dBm) - Ave.power power (dBm))/10, where tune-up limit is the maximum rated power among all production units.  
Reported SAR(W/kg)=Measured SAR (W/kg)\*Scaling Factor.

## 11. SAR Measurement Variability

According to KDB 865664 D01, SAR measurement variability was assessed for each frequency band, which is determined by the SAR probe calibration point and tissue-equivalent medium used for the device measurements. When both head and body tissue-equivalent media are required for SAR measurements in a frequency band, the variability measurement procedures should be applied to the tissue medium with the highest measured SAR, using the highest measured SAR configuration for that tissue-equivalent medium. Alternatively, if the highest measured SAR for both head and body tissue-equivalent media are  $\leq 1.45$  W/kg and the ratio of these highest SAR values, i.e., largest divided by smallest value, is  $\leq 1.10$ , the highest SAR configuration for either head or body tissue-equivalent medium may be used to perform the repeated measurement. These additional measurements are repeated after the completion of all measurements requiring the same head or body tissue-equivalent medium in a frequency band. The test device should be returned to ambient conditions (normal room temperature) with the battery fully charged before it is re-mounted on the device holder for the repeated measurement(s) to minimize any unexpected variations in the repeated results.

SAR repeated measurement procedure:

1. When the highest measured SAR is  $< 0.80$  W/kg, repeated measurement is not required.
2. When the highest measured SAR is  $\geq 0.80$  W/kg, repeat that measurement once.
3. If the ratio of largest to smallest SAR for the original and first repeated measurements is  $> 1.20$ , or when the original or repeated measurement is  $\geq 1.45$  W/kg, perform a second repeated measurement.
4. If the ratio of largest to smallest SAR for the original, first and second repeated measurements is  $> 1.20$ , and the original, first or second repeated measurement is  $\geq 1.5$  W/kg, perform a third repeated measurement.

Note: For 1g SAR, the highest measured 1g SAR is  $0.488 < 0.80$  W/kg, repeated measurement is not required.

## 12. Simultaneous Transmission

Simultaneous transmission SAR test exclusion is determined for each operating configuration and exposure condition according to the reported standalone SAR of each applicable simultaneous transmitting antenna. When the sum of SAR 1g of all simultaneously transmitting antennas in an operating mode and exposure condition combination is within the SAR limit (SAR 1g 1.6 W/kg), the simultaneous transmission SAR is not required. When the sum of SAR 1g is greater than the SAR limit (SAR 1g 1.6 W/kg), SAR test exclusion is determined by the SAR to Peak Location Ratio (SPLSR).

### 12.1 Simultaneous Transmission Mode Considerations

Simultaneous transmission SAR test exclusion is determined for each operating configuration and exposure condition according to the reported standalone SAR of each applicable simultaneous transmitting antenna. The device has 2 Tx antennas, one only for wifi, and the other for Wifi&Bluetooth.

Mode	Position	Ant.1 Wifi 1g reported SAR (W/kg)	Ant.1 BT 1g estimated SAR (W/kg)	Ant.2 Wifi 1g reported SAR (W/kg)	Ant.1 Wifi + Ant.2 Wifi 1g simultaneous SAR (W/kg)	Ant.1 BT + Ant.2 Wifi 1g simultaneous SAR (W/kg)
2.4g Wifi (SISO)	Front	0.235	0.016	0.205	0.440	0.221
	Back	0.192	0.016	0.159	0.351	0.175
5.2g Wifi (SISO)	Front	0.150	0.016	0.134	0.284	0.150
	Back	0.112	0.016	0.107	0.219	0.123
5.4g Wifi (SISO)	Front	0.255	0.016	0.242	0.497	0.258
	Back	0.205	0.016	0.213	0.418	0.229
5.8g Wifi (SISO)	Front	0.191	0.016	0.167	0.358	0.183
	Back	0.126	0.016	0.127	0.253	0.143
2.4g Wifi (MIMO)	Front	<b>0.349</b>	/	0.327	0.676	/
	Back	0.220	/	0.211	0.431	/
5.2g Wifi (MIMO)	Front	<b>0.224</b>	/	0.209	0.433	/
	Back	0.167	/	0.156	0.323	/
5.4g Wifi (MIMO)	Front	<b>0.539</b>	/	0.497	<b>1.036</b>	/
	Back	0.342	/	0.331	0.673	/
5.8g Wifi (MIMO)	Front	<b>0.409</b>	/	0.397	0.806	/
	Back	0.274	/	0.260	0.534	/

### 13. Test Equipment List

Description	Manufacturer	Model	Serial No./Version	Cal. Date	Cal. Due
E-Field Probe	MVG	SSE2	04/22 EPGO365	2023/02/06	2024/02/05
6 1/2 Digital Multimeter	Keithley	DMM6500	4527164	2022/11/24	2023/11/23
Wideband Radio Communication Tester	ROHDE & SCHWARZ	CMW500	161997	2022/11/24	2023/11/23
MXG Vector Signal Generator	Agilent	N5182A	MY46240163	2022/11/24	2023/11/23
E-Series Avg. Power Sensor	KEYSIGHT	E9300A	MY55050017	2023/03/24	2024/03/23
EPM Series Power Meter	KEYSIGHT	E4418B	MY41293435	2023/03/24	2024/03/23
10dB Attenuator	MIDWEST MICROWAVE	263-10dB	/	2023/03/24	2024/03/23
Coupler	MERRIMAC	CWM-10R-10.8G	LOT-83391	2023/03/24	2024/03/23
2450MHz Validation Dipole	MVG	SID2450	07/22 DIP 2G450-662	2023/02/06	2024/02/05
5200MHz-5800MHz Validation Dipole	MVG	SID5000	07/22 DIP5G000-670	2023/02/06	2024/02/05
LIMESAR Dielectric Probe	MVG	SCLMP	06/22 OCPG88	/	/
ENA Series Network Analyzer	Agilent	E5071B	MY42301221	2022/11/24	2023/11/23
Thermometer	Riters	DT-232	21A11	2023/03/24	2024/03/23
Antenna network emulator	MVG	ANTA 74	07/22 ANTA 74	/	/
SAM Phantom	MVG	SAM	07/22 SAM149	/	/
Mobile Phone Positioning System	MVG	MSH 118	07/22 MSH 118	/	/
Mechanical Calibration Kit	PNA	/	/	/	/
Open SAR test software	MVG	/	V5.3.5	/	/

Note: For dipole antennas, BTF has adopted 3 years as calibration intervals, and on annual basis, every measurement dipole has been evaluated and is in compliance with the following criteria:

1. There is no physical damage on the dipole;
2. System validation with specific dipole is within 10% of calibrated value;
3. Return-loss in within 20% of calibrated measurement.
4. Impedance (real or imaginary parts) in within 5 Ohms of calibrated measurement.

## ANNEX A Simulating Liquid Verification Result

The dielectric parameters of the liquids were verified prior to the SAR evaluation using an SCLMP Dielectric Probe Kit.

Dielectric performance of tissue simulating liquid									
Frequency (MHz)	$\epsilon_r$		$\sigma$ (s/m)		Delta ( $\epsilon_r$ )	Delta ( $\sigma$ )	Limit	Temp (°C)	Date
	Target	Measured	Target	Measured					
2450	39.20	39.08	1.80	1.81	0.31%	-0.56%	±5%	20.0	19/6/2023
5200	36.00	35.88	4.66	4.70	0.33%	-0.86%	±5%	20.0	19/6/2023
5400	35.80	35.68	4.86	4.90	0.34%	-0.82%	±5%	20.0	19/6/2023
5600	35.50	35.38	5.07	5.11	0.34%	-0.79%	±5%	20.0	19/6/2023
5800	35.30	35.18	5.27	5.31	0.34%	-0.76%	±5%	20.0	19/6/2023

NOTE: The dielectric parameters of the tissue-equivalent liquid should be measured under similar ambient conditions and within 2 °C of the conditions expected during the SAR evaluation to satisfy protocol requirements.

## ANNEX B System Check Result

Comparing to the original SAR value provided by MVG, the validation data should be within its specification of 10 %(for 10 g).

Frequency (MHz)	Input Power (mW)	1g SAR (W/Kg)	10g SAR (W/Kg)	1g SAR 1W input power normalized (W/Kg)	10g SAR 1W input power normalized (W/Kg)	1g SAR Standard target (1W) (W/Kg)	10g SAR Standard target (1W) (W/Kg)	1g SAR Deviation	10g SAR Deviation
2450	16	0.793	0.352	49.56	22.00	54.4	23.86	-8.89%	-7.80%
5200	13	0.998	0.294	76.77	22.62	73.88	21.29	3.91%	6.23%
5400	13	1.120	0.327	86.15	25.15	81.47	23.23	5.75%	8.28%
5600	13	1.084	0.314	83.38	24.15	78.71	22.64	5.94%	6.69%
5800	13	1.023	0.280	78.69	21.54	74.21	21.50	6.04%	0.18%



## System Performance Check Data (2450 MHz)

### System check at 2450 MHz

Date of measurement: 19/6/2023

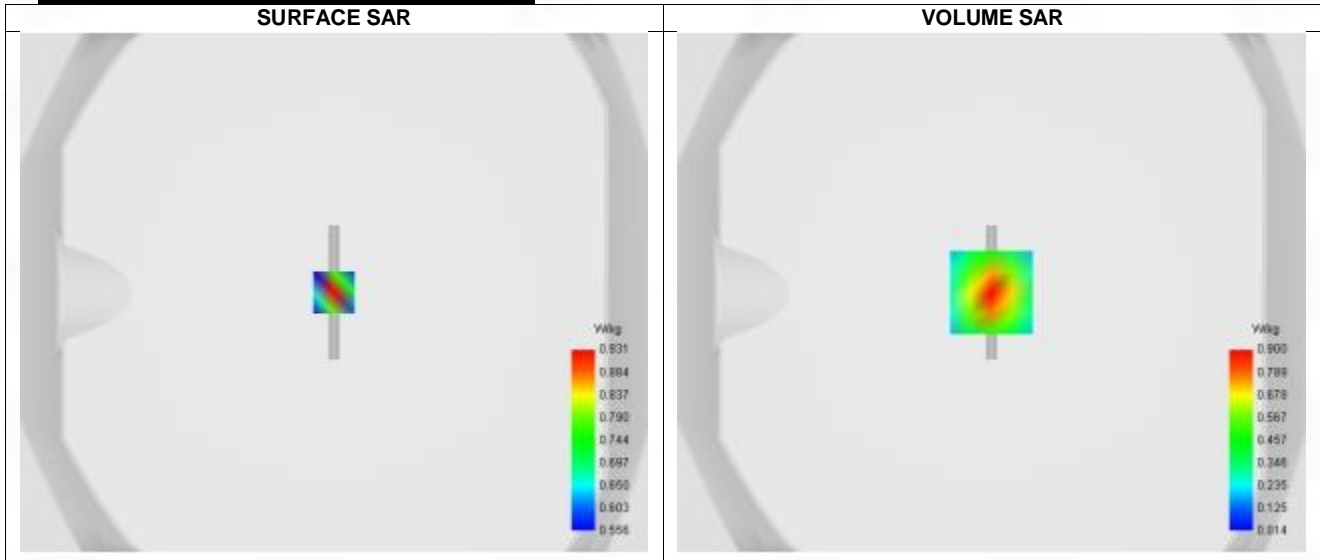
#### A. Experimental conditions.

Probe	SN 04/22 EPG0365
ConvF	2.36
Area Scan	dx=8mm dy=8mm, Adaptive 1 max
Zoom Scan	5x5x7, dx=8mm dy=8mm dz=5mm, Complete
Phantom	Validation plane
Device Position	Dipole
Band	CW2450
Channels	Middle
Signal	CW

#### B. Permittivity

Frequency (MHz)	2450.000
Relative permittivity (real part)	39.080
Relative permittivity (imaginary part)	13.340
Conductivity (S/m)	1.810

#### C. SAR Surface and Volume



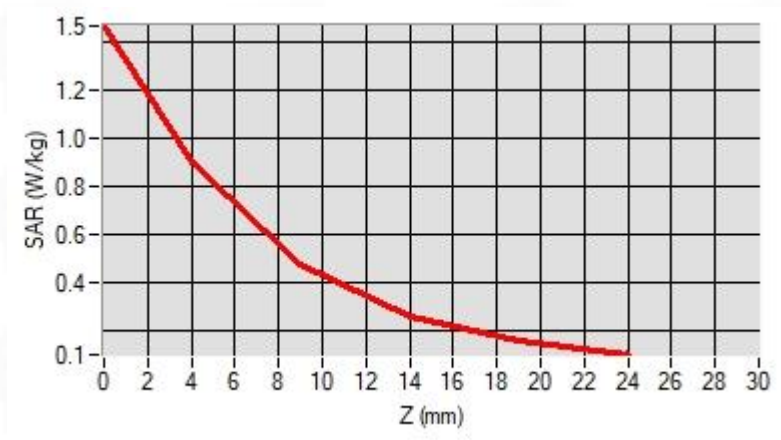
Maximum location: X=0.00, Y=0.00 ; SAR Peak: 1.47 W/kg

#### D. SAR 1g & 10g

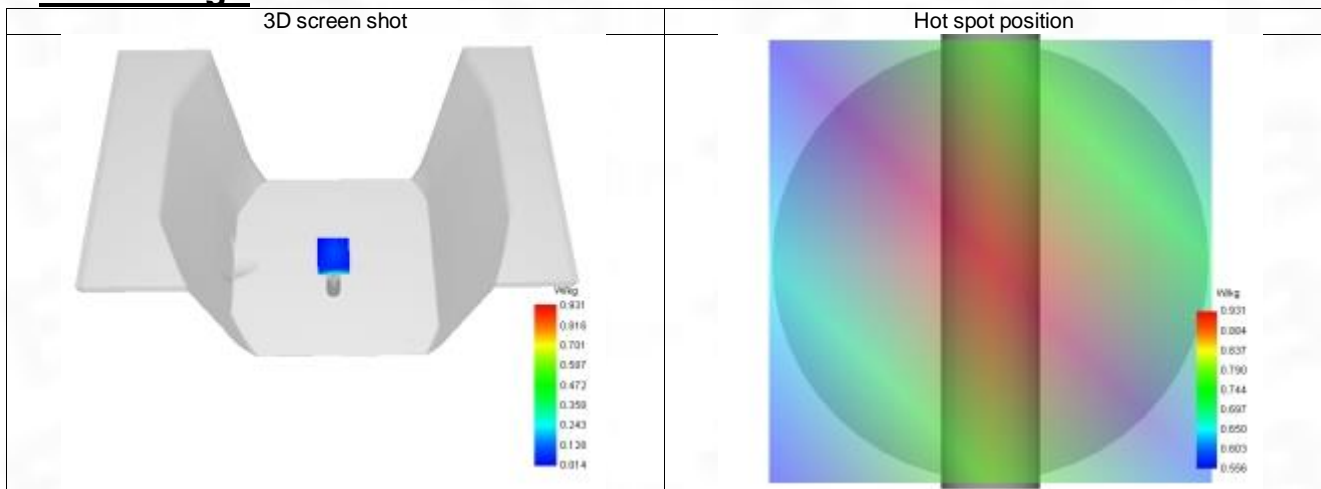
SAR 10g (W/Kg)	0.352
SAR 1g (W/Kg)	0.793
Variation (%)	-2.570
Horizontal validation criteria: minimum distance (mm)	0.000000
Vertical validation criteria: SAR ratio M2/M1 (%)	0.000000

#### E. Z Axis Scan

Z (mm)	0.00	4.00	9.00	14.00	19.00
SAR (W/Kg)	1.466	0.900	0.477	0.261	0.158



### F. 3D Image



## System Performance Check Data (5200 MHz)

### System check at 5200 MHz

Date of measurement: 19/6/2023

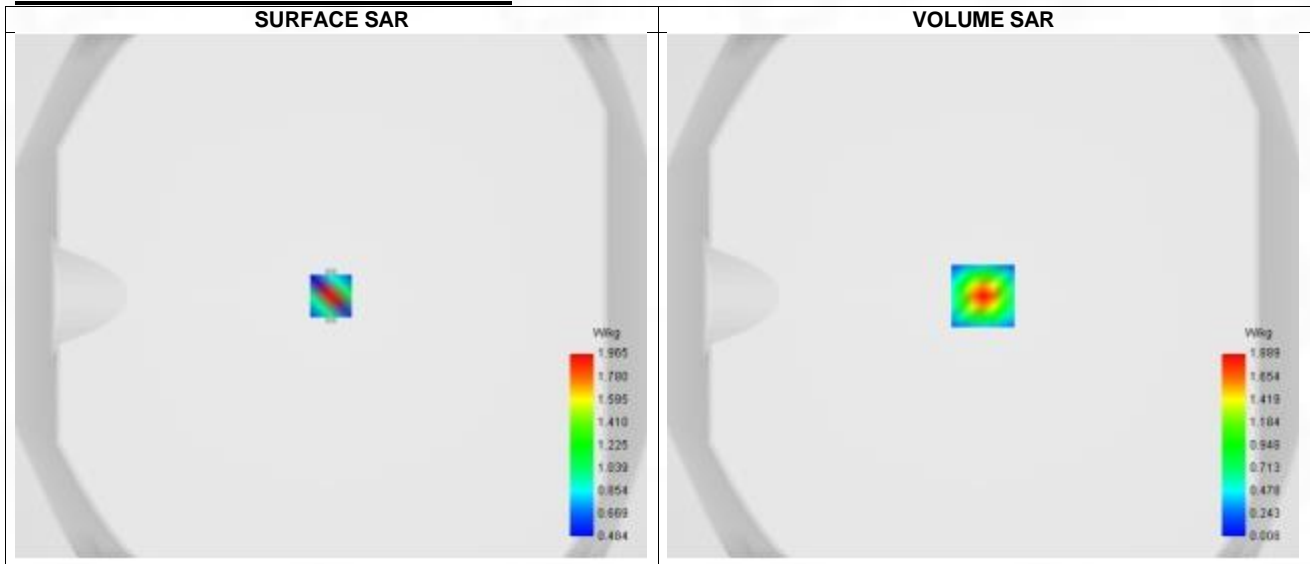
#### A. Experimental conditions.

Probe	SN 04/22 EPG0365
ConvF	2.24
Area Scan	dx=8mm dy=8mm, Adaptive 1 max
Zoom Scan	7x7x12,dx=4mm dy=4mm dz=5mm,Complete
Phantom	Validation plane
Device Position	Dipole
Band	CW5200
Channels	Middle
Signal	CW

#### B. Permittivity

Frequency (MHz)	5200.000
Relative permittivity (real part)	35.880
Relative permittivity (imaginary part)	16.250
Conductivity (S/m)	4.700

#### C. SAR Surface and Volume



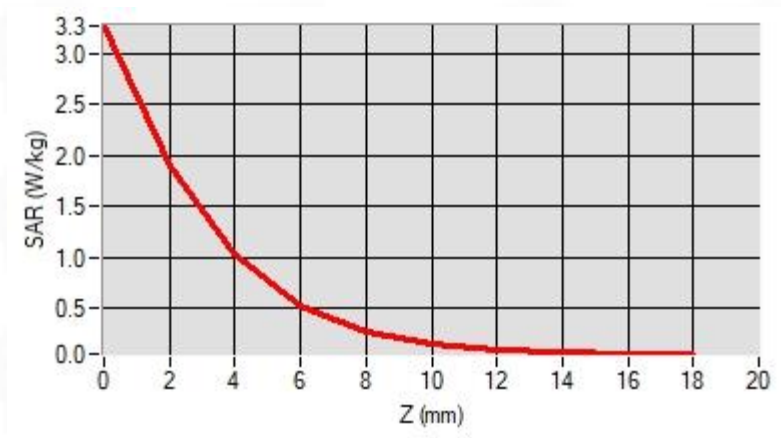
Maximum location: X=0.00, Y=0.00 ; SAR Peak: 3.38 W/kg

#### D. SAR 1g & 10g

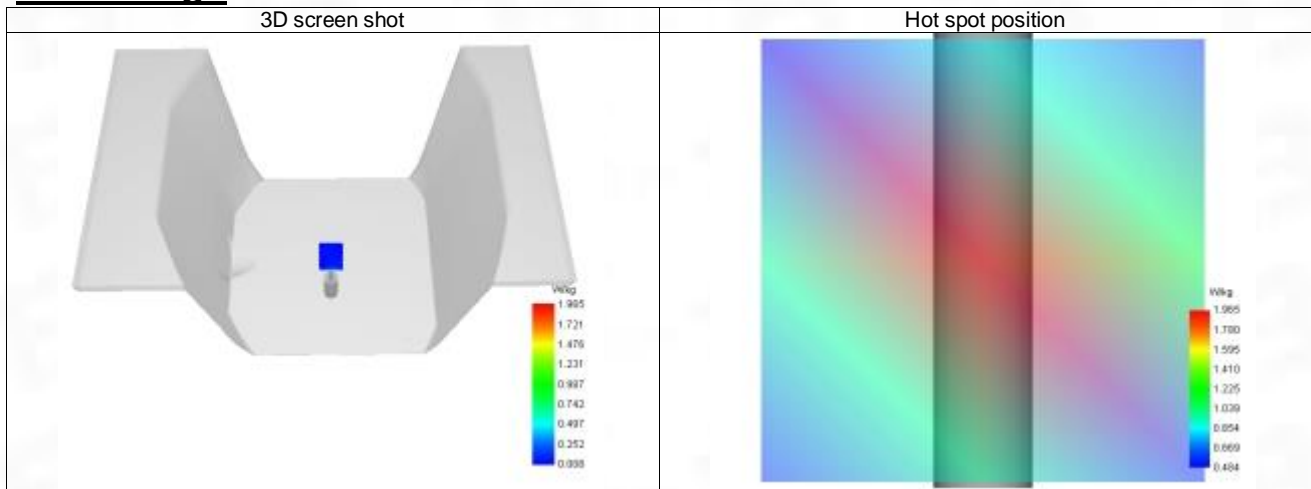
SAR 10g (W/Kg)	0.294
SAR 1g (W/Kg)	0.998
Variation (%)	-3.400
Horizontal validation criteria: minimum distance (mm)	0.000000
Vertical validation criteria: SAR ratio M2/M1 (%)	0.000000

#### E. Z Axis Scan

Z (mm)	0.00	2.00	4.00	6.00	8.00	10.00	12.00	14.00	16.00
SAR (W/Kg)	3.268	1.889	1.021	0.523	0.266	0.142	0.085	0.060	0.052



### F. 3D Image



## System Performance Check Data (5400 MHz)

### System check at 5400 MHz

Date of measurement: 19/6/2023

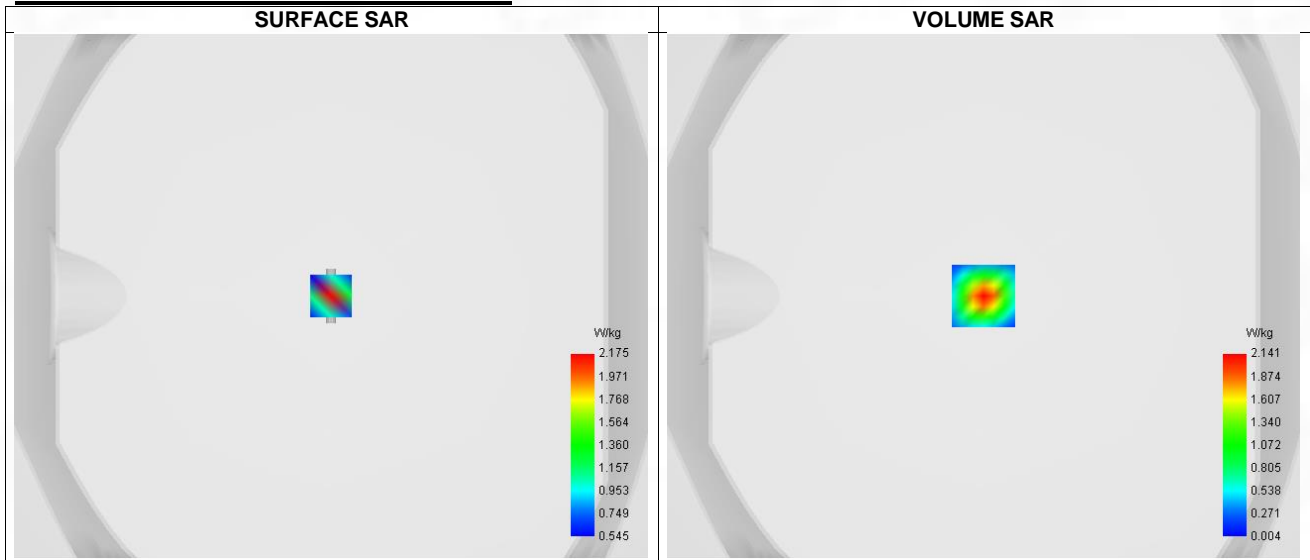
#### A. Experimental conditions.

Probe	SN 04/22 EPG0365
ConvF	2.12
Area Scan	dx=8mm dy=8mm, Adaptive 1 max
Zoom Scan	7x7x12,dx=4mm dy=4mm dz=5mm,Complete
Phantom	Validation plane
Device Position	Dipole
Band	CW5400
Channels	Middle
Signal	CW

#### B. Permittivity

Frequency (MHz)	5400.000
Relative permittivity (real part)	35.800
Relative permittivity (imaginary part)	16.200
Conductivity (S/m)	4.860

#### C. SAR Surface and Volume



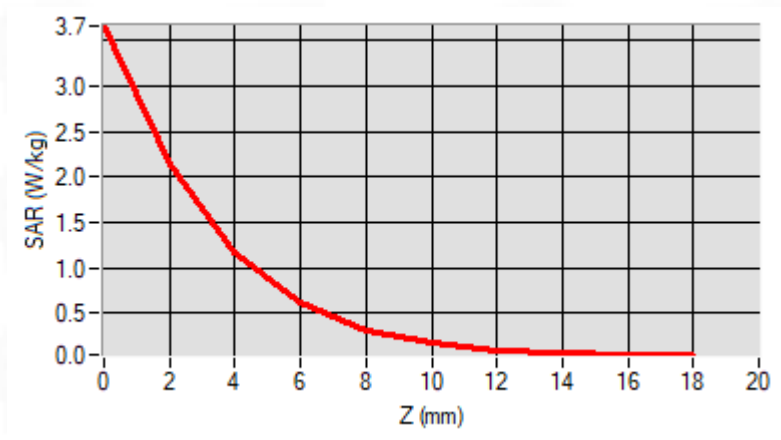
Maximum location: X=0.00, Y=0.00 ; SAR Peak: 3.78 W/kg

#### D. SAR 1g & 10g

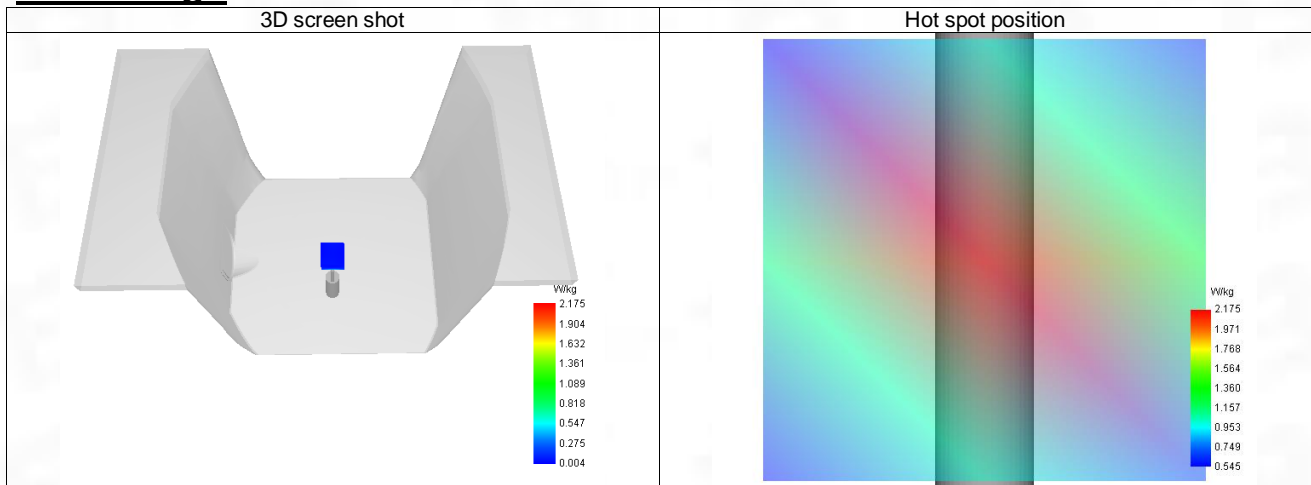
SAR 10g (W/Kg)	0.327
SAR 1g (W/Kg)	1.120
Variation (%)	-4.610
Horizontal validation criteria: minimum distance (mm)	0.000000
Vertical validation criteria: SAR ratio M2/M1 (%)	0.000000

#### E. Z Axis Scan

Z (mm)	0.00	2.00	4.00	6.00	8.00	10.00	12.00	14.00	16.00
SAR (W/Kg)	3.660	2.141	1.177	0.614	0.317	0.169	0.098	0.065	0.050



### F. 3D Image



## System Performance Check Data (5600 MHz)

### System check at 5600 MHz

Date of measurement: 19/6/2023

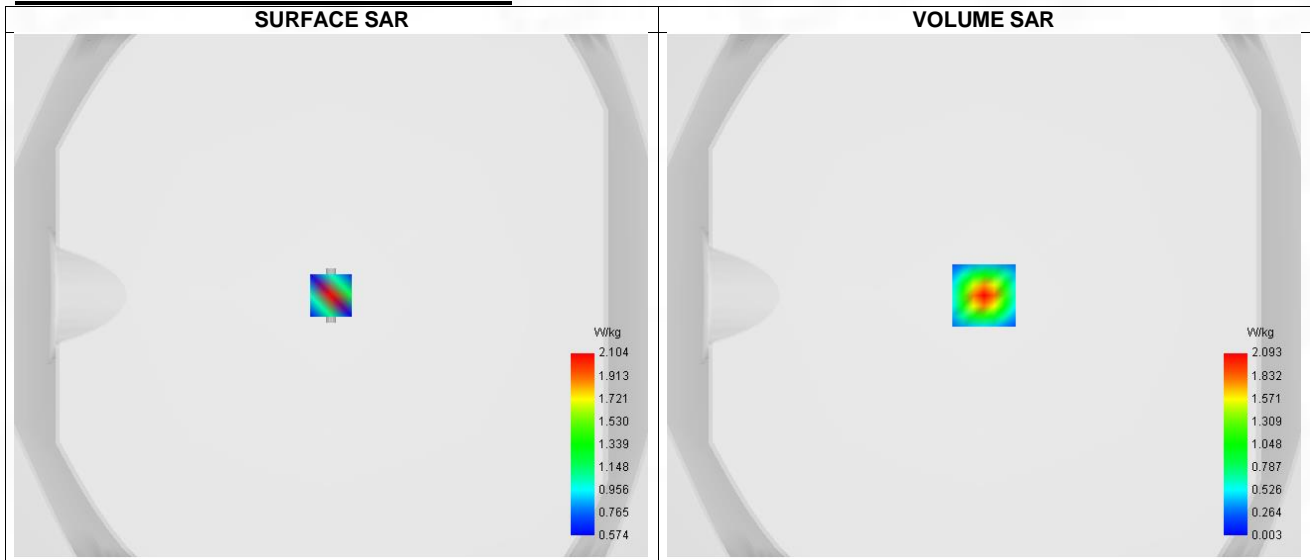
#### A. Experimental conditions.

Probe	SN 04/22 EPG0365
ConvF	2.18
Area Scan	dx=8mm dy=8mm, Adaptive 1 max
Zoom Scan	7x7x12,dx=4mm dy=4mm dz=5mm,Complete
Phantom	Validation plane
Device Position	Dipole
Band	CW5600
Channels	Middle
Signal	CW

#### B. Permittivity

Frequency (MHz)	5600.000
Relative permittivity (real part)	35.500
Relative permittivity (imaginary part)	16.300
Conductivity (S/m)	5.071

#### C. SAR Surface and Volume



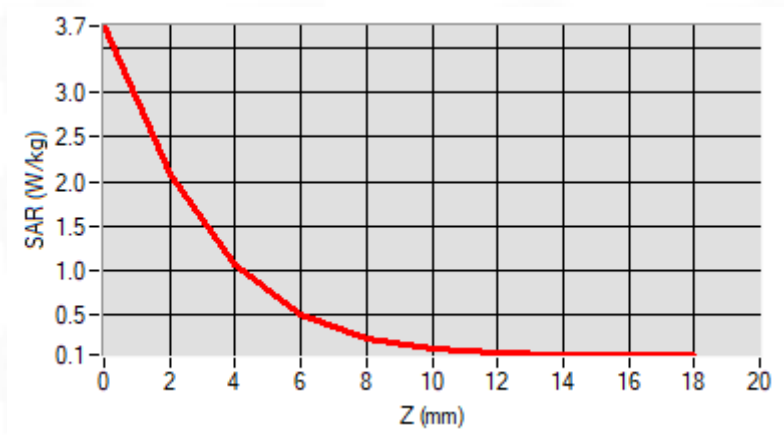
Maximum location: X=0.00, Y=0.00 ; SAR Peak: 3.90 W/kg

#### D. SAR 1g & 10g

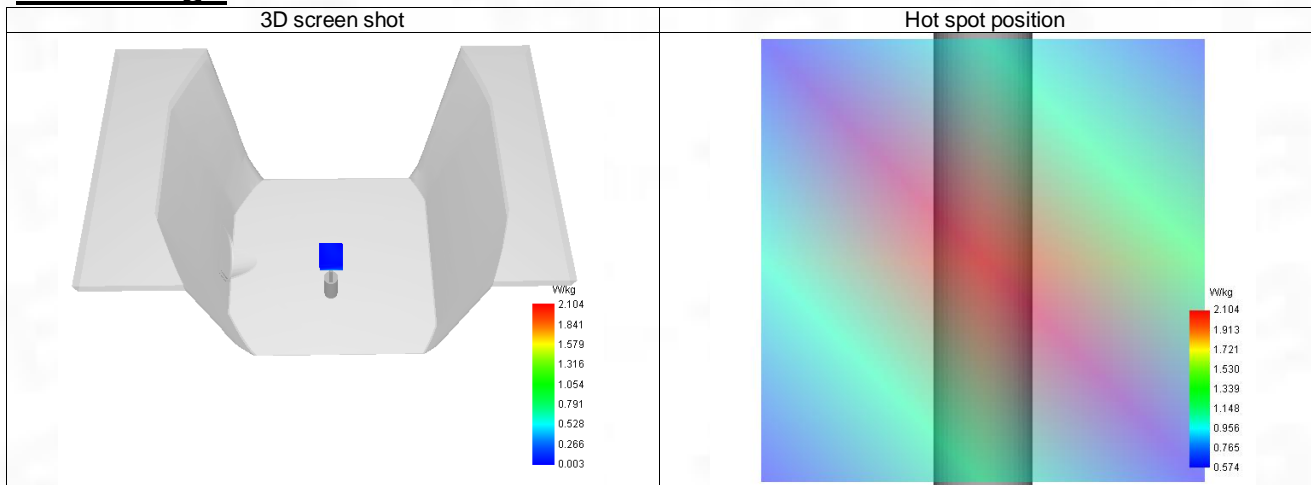
SAR 10g (W/Kg)	0.314
SAR 1g (W/Kg)	1.084
Variation (%)	-0.190
Horizontal validation criteria: minimum distance (mm)	0.000000
Vertical validation criteria: SAR ratio M2/M1 (%)	0.000000

#### E. Z Axis Scan

Z (mm)	0.00	2.00	4.00	6.00	8.00	10.00	12.00	14.00	16.00
SAR (W/Kg)	3.748	2.093	1.074	0.514	0.243	0.122	0.072	0.056	0.056



### F. 3D Image





## System Performance Check Data (5800 MHz)

### System check at 5800 MHz

Date of measurement: 19/6/2023

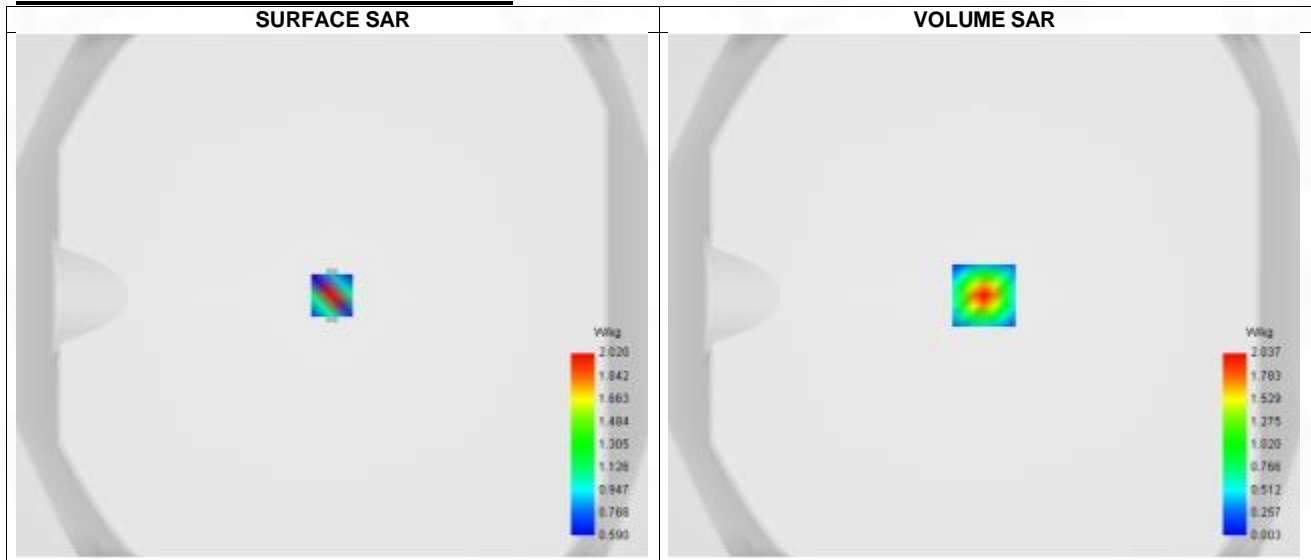
#### A. Experimental conditions.

Probe	SN 04/22 EPG0365
ConvF	2.04
Area Scan	dx=8mm dy=8mm, Adaptive 1 max
Zoom Scan	7x7x12, dx=4mm dy=4mm dz=5mm, Complete
Phantom	Validation plane
Device Position	Dipole
Band	CW5800
Channels	Middle
Signal	CW

#### B. Permittivity

Frequency (MHz)	5800.000
Relative permittivity (real part)	35.180
Relative permittivity (imaginary part)	16.480
Conductivity (S/m)	5.310

#### C. SAR Surface and Volume



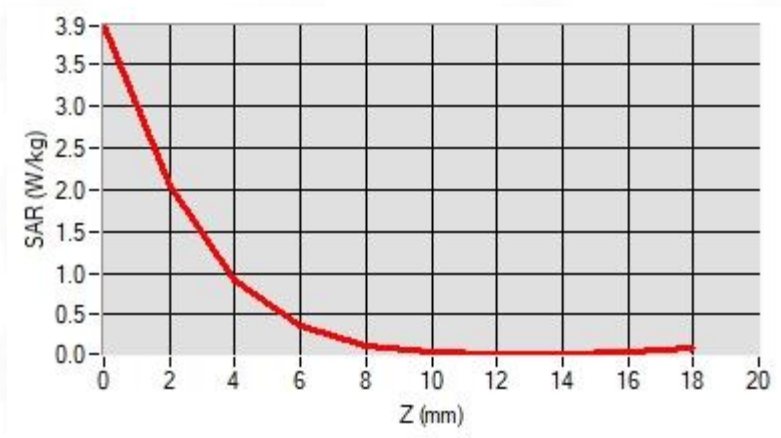
Maximum location: X=0.00, Y=0.00 ; SAR Peak: 4.17 W/kg

#### D. SAR 1g & 10g

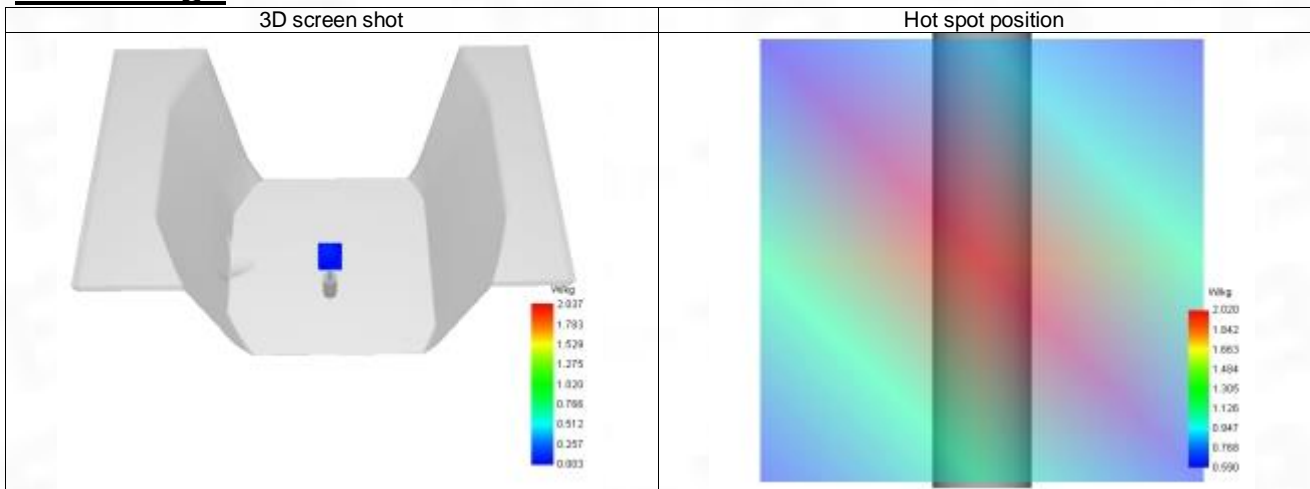
SAR 10g (W/Kg)	0.280
SAR 1g (W/Kg)	1.023
Variation (%)	0.490
Horizontal validation criteria: minimum distance (mm)	0.000000
Vertical validation criteria: SAR ratio M2/M1 (%)	0.000000

#### E. Z Axis Scan

Z (mm)	0.00	2.00	4.00	6.00	8.00	10.00	12.00	14.00	16.00
SAR (W/Kg)	3.948	2.037	0.915	0.361	0.135	0.055	0.033	0.037	0.059



### F. 3D Image



## ANNEX C Test Data

1-Body with front position in dist. 0mm on Channel 6 in IEEE 802.11n ISM

### SAR Measurement at IEEE 802.11n ISM (Body, Validation Plane)

Date of measurement: 19/6/2023

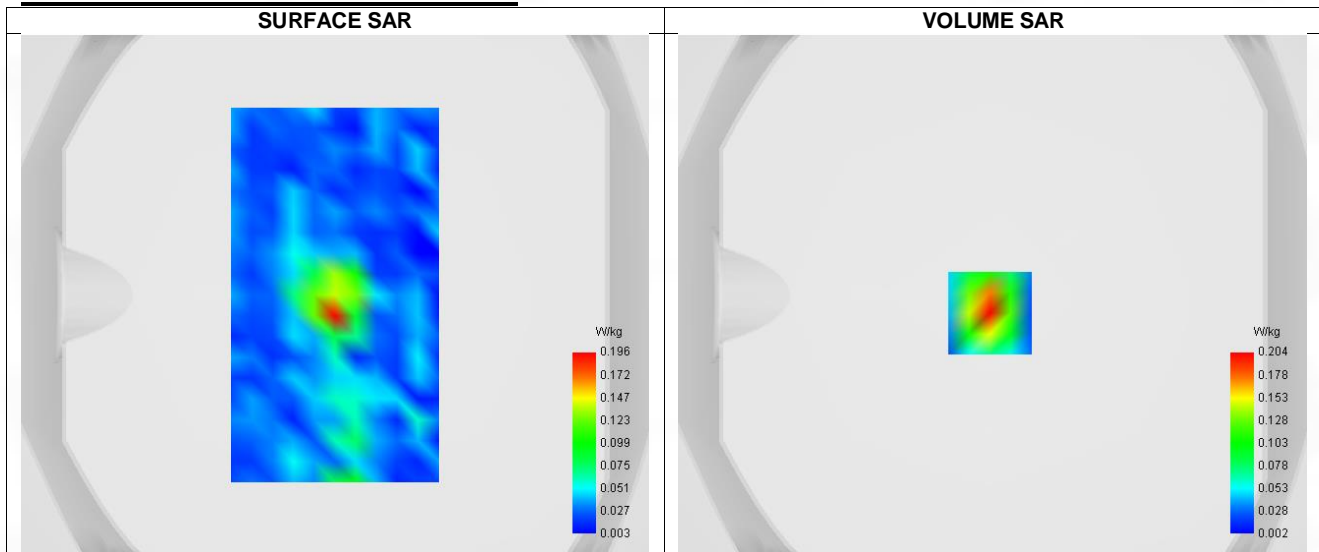
#### A. Experimental conditions.

Probe	SSE2 (SN 36/20 EPG0346)
ConvF	2.36
Area Scan	surf_sam_plan.txt
Zoom Scan	5x5x7,dx=8mm dy=8mm dz=5mm,Complete
Phantom	Validation plane
Device Position	Body
Band	IEEE 802.11n ISM
Channels	Middle (6)
Signal	IEEE 802.11

#### B. Permittivity

Frequency (MHz)	2437.000
Relative permittivity (real part)	39.097
Relative permittivity (imaginary part)	13.396
Conductivity (S/m)	1.796

#### C. SAR Surface and Volume



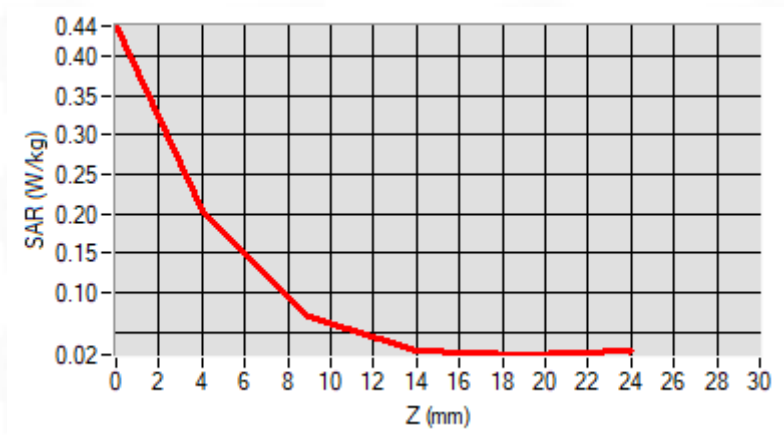
Maximum location: X=-1.00, Y=-7.00 ; SAR Peak: 0.44 W/kg

#### D. SAR 1g & 10g

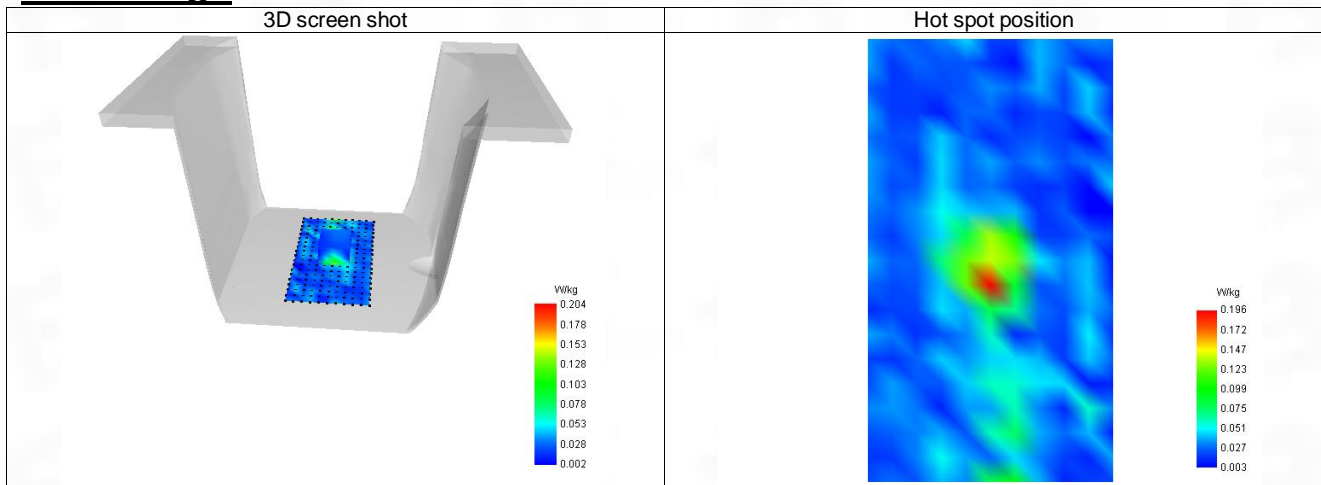
SAR 10g (W/Kg)	0.126
SAR 1g (W/Kg)	0.330
Variation (%)	-3.570
Horizontal validation criteria: minimum distance (mm)	0.000000
Vertical validation criteria: SAR ratio M2/M1 (%)	0.000000

#### E. Z Axis Scan

Z (mm)	0.00	4.00	9.00	14.00	19.00
SAR (W/Kg)	0.438	0.204	0.069	0.027	0.021



### F. 3D Image



## 2-Body with front position in dist. 0mm on Channel 46 in IEEE 802.11n U-NII

### SAR Measurement at IEEE 802.11n U-NII (Body, Validation Plane)

Date of measurement: 19/6/2023

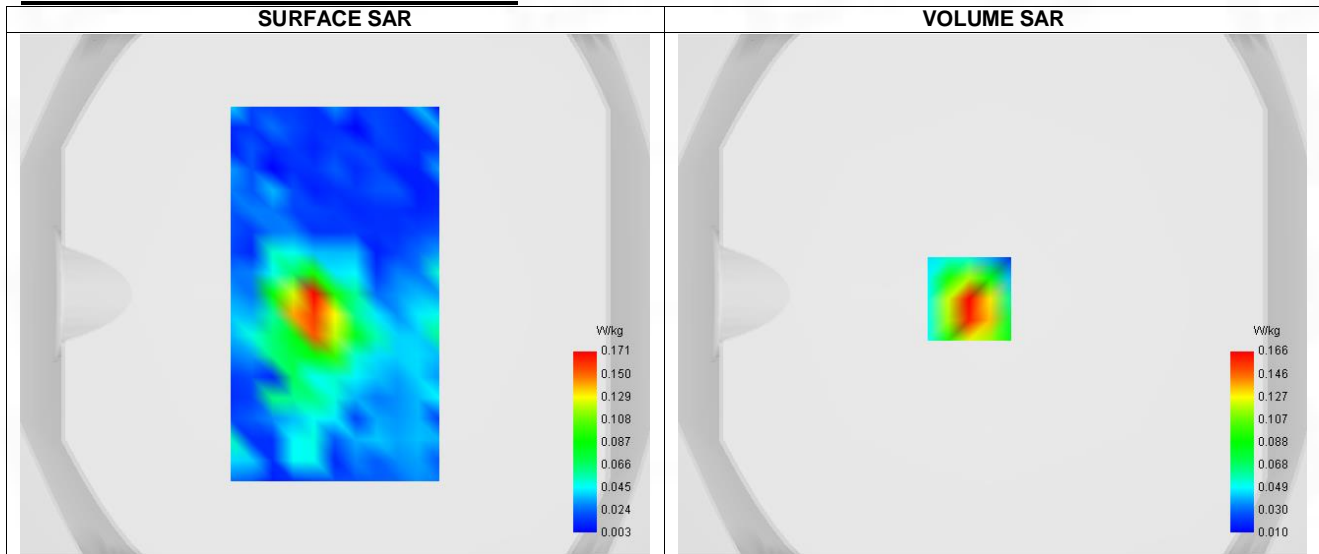
#### A. Experimental conditions.

Probe	SN 04/22 EPGO365
ConvF	2.24
Area Scan	surf_sam_plan.txt
Zoom Scan	5x5x7,dx=8mm dy=8mm dz=5mm,Complete
Phantom	Validation plane
Device Position	Body
Band	IEEE 802.11n U-NII
Channels	Higher (46)
Signal	IEEE 802.11

#### B. Permittivity

Frequency (MHz)	5230.000
Relative permittivity (real part)	35.850
Relative permittivity (imaginary part)	16.280
Conductivity (S/m)	4.730

#### C. SAR Surface and Volume



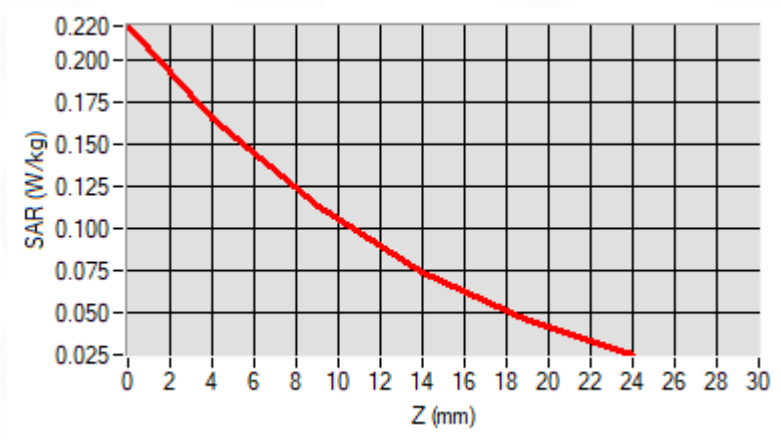
Maximum location: X=-9.00, Y=-2.00 ; SAR Peak: 0.24 W/kg

#### D. SAR 1g & 10g

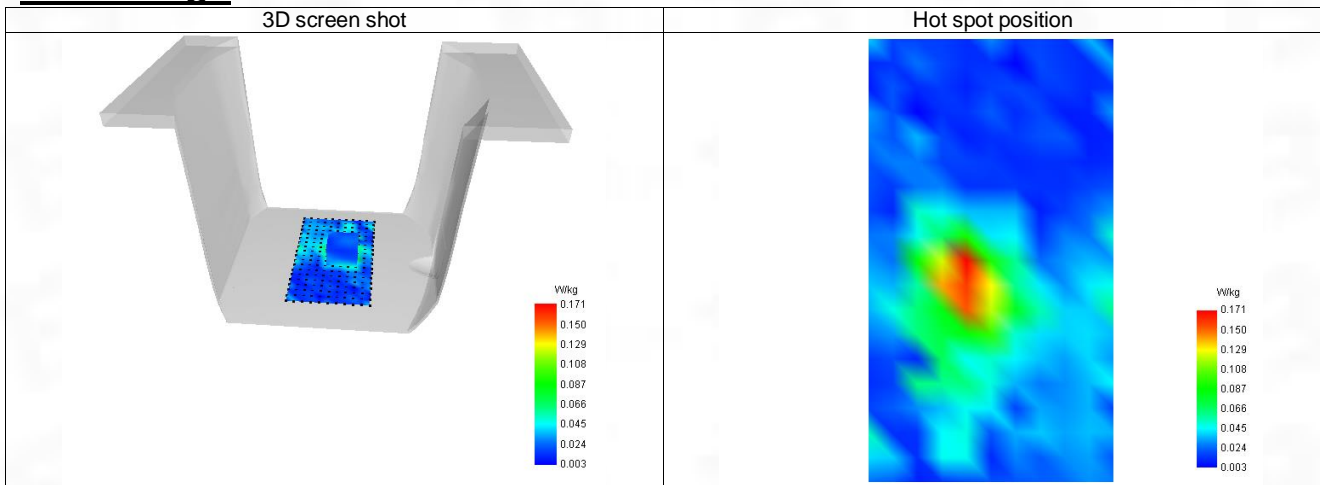
SAR 10g (W/Kg)	0.087
SAR 1g (W/Kg)	0.201
Variation (%)	-3.030
Horizontal validation criteria: minimum distance (mm)	0.000000
Vertical validation criteria: SAR ratio M2/M1 (%)	0.000000

#### E. Z Axis Scan

Z (mm)	0.00	4.00	9.00	14.00	19.00
SAR (W/Kg)	0.220	0.166	0.113	0.074	0.046



### F. 3D Image



**3-Body with front position in dist. 0mm on Channel 62 in IEEE 802.11n U-NII**

**SAR Measurement at IEEE 802.11n U-NII (Body, Validation Plane)**

Date of measurement: 19/6/2023

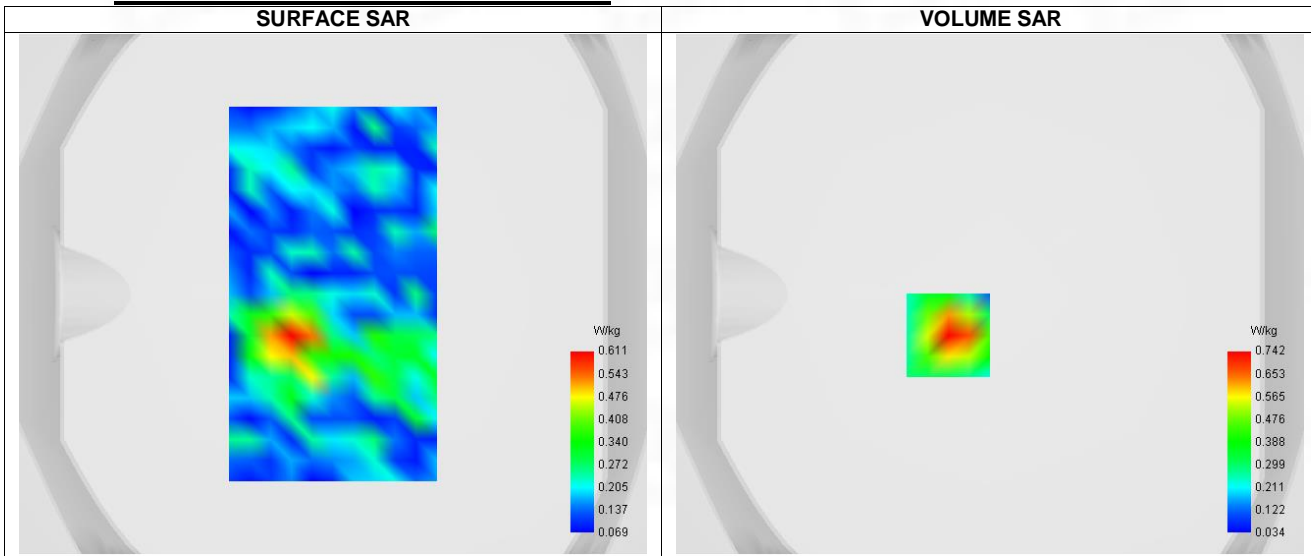
**A. Experimental conditions.**

Probe	SN 04/22 EPG0365
ConvF	2.12
Area Scan	surf_sam_plan.txt
Zoom Scan	5x5x7,dx=8mm dy=8mm dz=5mm,Complete
Phantom	Validation plane
Device Position	Body
Band	IEEE 802.11n U-NII
Channels	Higher (62)
Signal	IEEE 802.11

**B. Permittivity**

Frequency (MHz)	5310.000
Relative permittivity (real part)	35.770
Relative permittivity (imaginary part)	16.360
Conductivity (S/m)	4.810

**C. SAR Surface and Volume**



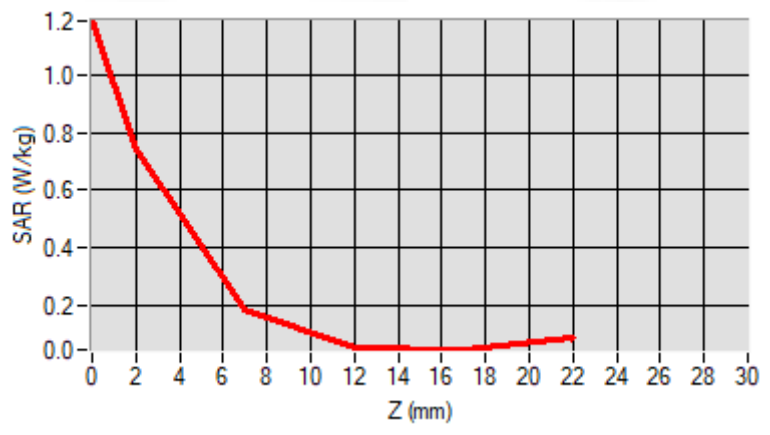
Maximum location: X=-16.00, Y=-16.00 ; SAR Peak: 1.26 W/kg

**D. SAR 1g & 10g**

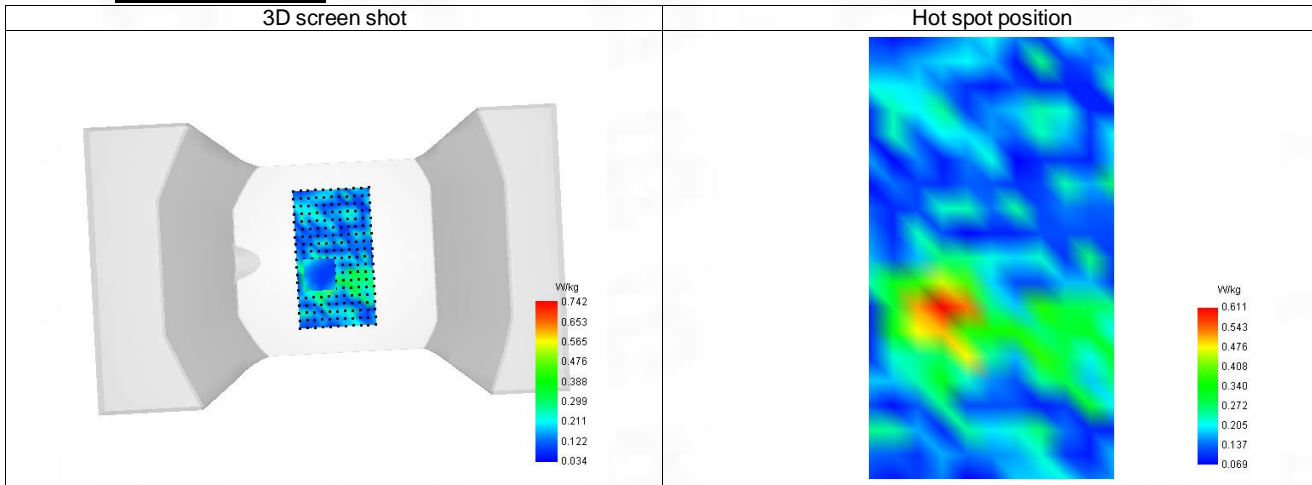
SAR 10g (W/Kg)	0.242
SAR 1g (W/Kg)	0.488
Variation (%)	-1.250
Horizontal validation criteria: minimum distance (mm)	0.000000
Vertical validation criteria: SAR ratio M2/M1 (%)	0.000000

**E. Z Axis Scan**

Z (mm)	0.00	2.00	7.00	12.00	17.00
SAR (W/Kg)	1.189	0.742	0.185	0.050	0.044



### F. 3D Image





4-Body with front position in dist. 0mm on Channel 134 in IEEE 802.11n U-NII

**SAR Measurement at IEEE 802.11n U-NII (Body, Validation Plane)**

Date of measurement: 19/6/2023

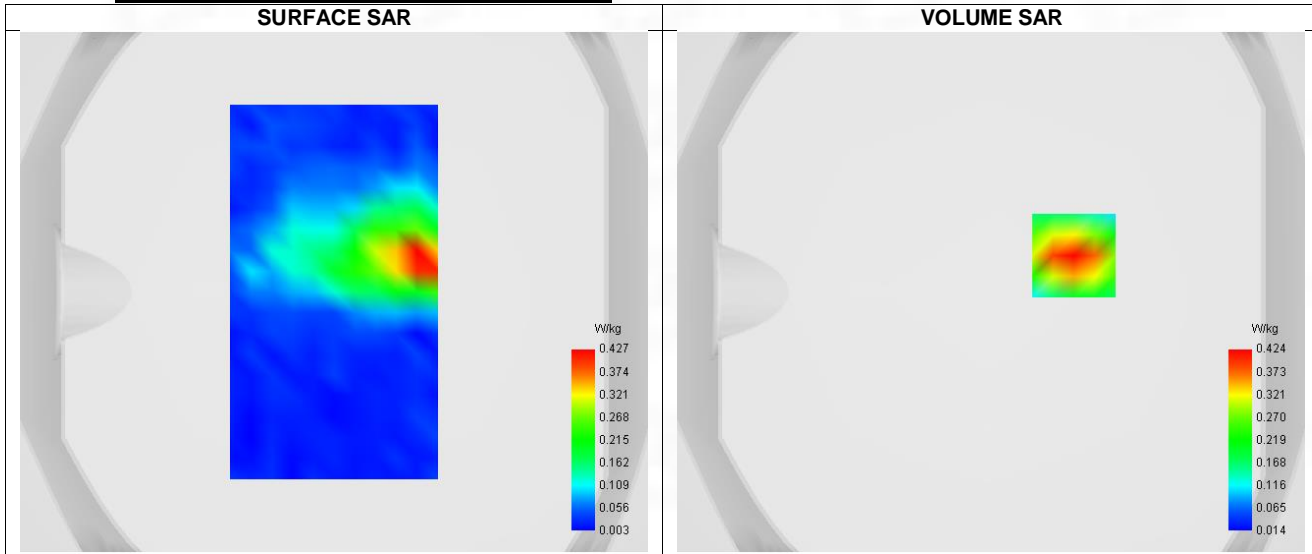
**A. Experimental conditions.**

Probe	SN 04/22 EPGO365
ConvF	2.18
Area Scan	surf_sam_plan.txt
Zoom Scan	5x5x7,dx=8mm dy=8mm dz=5mm,Complete
Phantom	Validation plane
Device Position	Body
Band	IEEE 802.11n U-NII
Channels	Higher (134)
Signal	IEEE 802.11

**B. Permittivity**

Frequency (MHz)	5670.000
Relative permittivity (real part)	35.310
Relative permittivity (imaginary part)	16.490
Conductivity (S/m)	5.180

**C. SAR Surface and Volume**

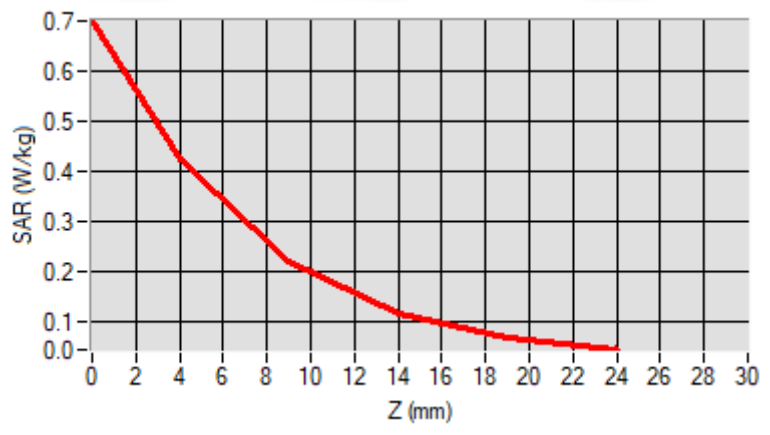


**D. SAR 1g & 10g**

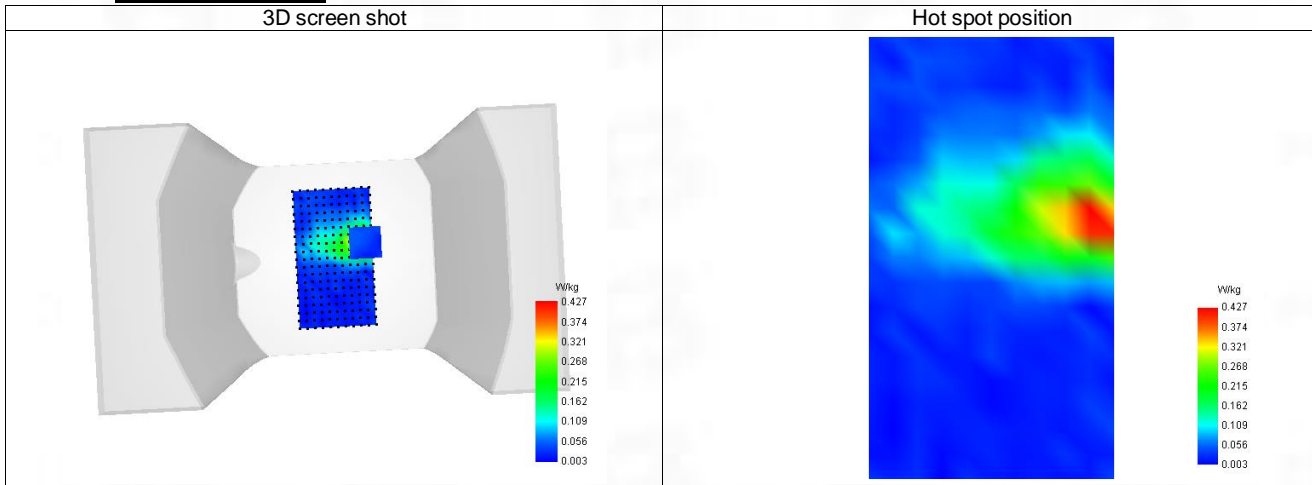
SAR 10g (W/Kg)	0.208
SAR 1g (W/Kg)	0.397
Variation (%)	-1.550
Horizontal validation criteria: minimum distance (mm)	0.000000
Vertical validation criteria: SAR ratio M2/M1 (%)	0.000000

**E. Z Axis Scan**

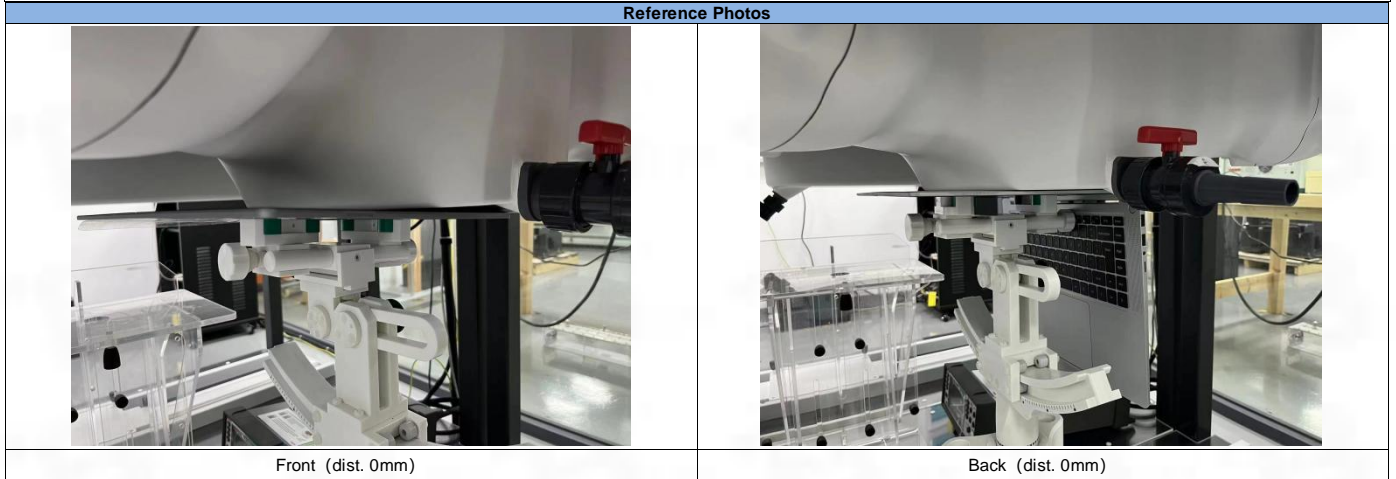
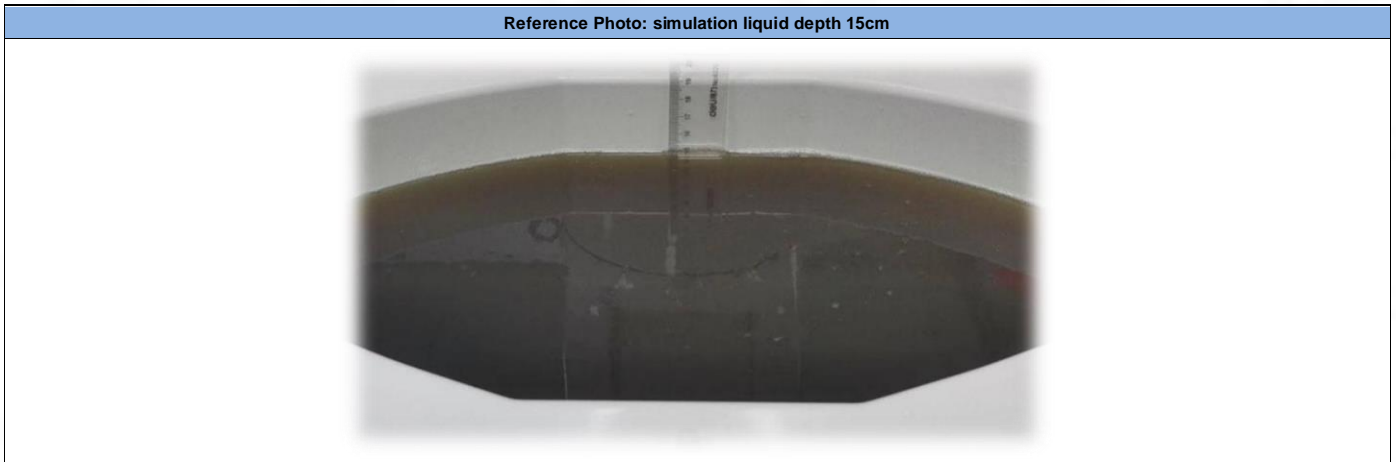
Z (mm)	0.00	4.00	9.00	14.00	19.00
SAR (W/Kg)	0.701	0.424	0.220	0.117	0.070



### F. 3D Image



## ANNEX D SAR Test Setup Photos



## ANNEX E EUT External and Internal Photos

Please refer to RF Report.

## ANNEX F Calibration Information

Please refer to the document "Calibration.pdf".



BTF Testing Lab (Shenzhen) Co., Ltd.

F101, 201 and 301, Building 1, Block 2, Tantou Industrial Park, Tantou Community, Songgang Street,  
Bao'an District, Shenzhen, China

[www.btf-lab.com](http://www.btf-lab.com)

**--END OF REPORT--**