

User Manual

Mobile Phone

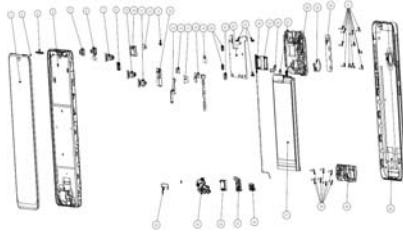
LC7

TECNO

TECNO MOBILE LIMITED

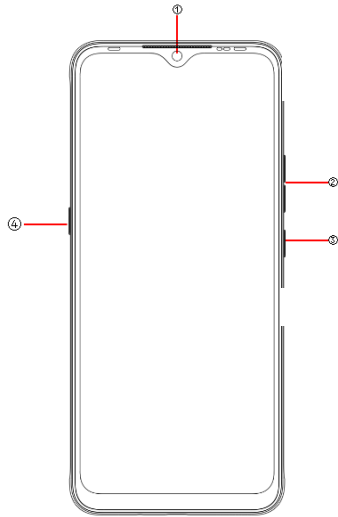
ROOM 604 6/F SOUTH TOWER WORLD, FINANCE
CTR HARBOUR CITY 17 CANTON ROAD TST KL,
Hong Kong

Explosion diagram specification



1	CTP_LCM	2	sensor diffuse film
3	REC DECO	4	FRONT COVER
5	CAM FRONT RUBBER	6	FRONT CAM
7	CAM_FF_2M_REAR	8	CAM_AF_13M
9	CAM_FF_2M_REAR	10	SPK
11	CAM_FF_8W	12	FRONT CAM con fb
13	sensor rubber	14	R vice CAM frame
15	FPC AIKey LC7	16	R three CAM Con foams
17	R four CAM Con foams	18	FPC Side key LC7
19	R MAIN CAM Con foams	20	R vice CAM Seal rubber
21	R four CAM Seal rubber	22	MAIN PCBA
23	screwM1.4*L2.5	24	coaxial cable
25	card holder LC7	26	LCM FPC con rubber
27	FP con foam	28	REAR CAM deco
29	FP	30	CAM LENS
31	screwM1.4*L3.5	32	FPC DOWN SPK
33	SUB PCBA	34	SPK
35	EARPHONE RUBBER	36	USB RUBBER
37	BATTERY	38	screwM1.4*L3.5
39	SPK FRAME	40	BATTERY COVER

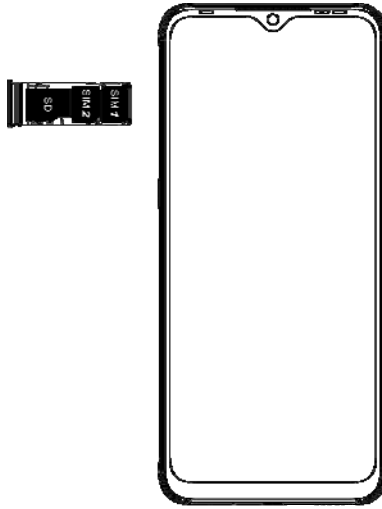
Know your phone



1. Front camera
2. Volume key
3. Power key
4. Google assistant key

SIM/SD card installation

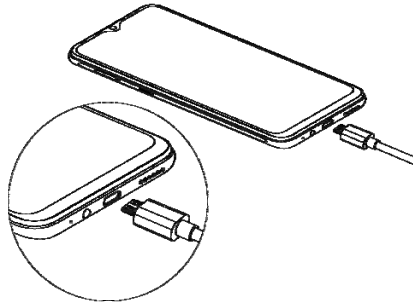
1. Power off mobile.
2. Refer to the following picture for SIM / SD card installation.



Charging the phone

You can charge your device using a charger or by connecting it to the computer using a USB cable (comes with the phone).

1. Please remind the front and back of the plug.
2. Use only TECNO charger and cables. Other chargers or cables may damage the device. This will invalidate your phone warranty.



Emergency call

If any emergency arises, dial 112/911 (or other emergency call number) for emergency help.

Due to the nature of cellular networking, the success of emergency call is not guaranteed.

FCC Warning:

This device complies with part 15 of the FCC Rules. Operation is subject to the following two conditions: (1) This device may not cause harmful interference, and (2) this device must accept any interference received, including interference that may cause undesired operation.

Any Changes or modifications not expressly approved by the party responsible for compliance could void the user's authority to operate the equipment.

This equipment has been tested and found to comply with the limits for a Class B digital device, pursuant to part 15 of the FCC Rules. These limits are designed to provide reasonable protection against harmful interference in a residential installation. This equipment generates uses and can radiate radio frequency energy and, if not installed and used in accordance with the instructions, may cause harmful interference to radio communications. However, there is no guarantee that interference will not occur in a particular installation. If this equipment does cause harmful interference to radio or television reception, which can be determined by turning the equipment off and on, the user is encouraged to try to correct the interference by one or more of the following measures:

- Reorient or relocate the receiving antenna.
- Increase the separation between the equipment and receiver.
- Connect the equipment into an outlet on a circuit different from that to which the receiver is connected.
- Consult the dealer or an experienced radio/TV technician for help.

The SAR limit of USA (FCC) is 1.6 W/kg averaged over one gram of tissue. Device types LC7 (FCC ID: 2ADYY-LC7) has also been tested against this SAR limit. The highest reported SAR values for head, body-worn accessory, and product specific (Hotspot) are 0.66 W/kg, 0.20 W/kg, and 0.20 W/kg respectively. The Max simultaneous SAR is 1.03W/kg. This device was tested for typical body-worn operations with the back of the handset kept 10mm from the body. To maintain compliance with FCC RF exposure requirements, use accessories that maintain a 10mm separation distance between the user's body and the back of the handset. The use of belt clips, holsters and similar accessories should not contain metallic components in its assembly. The use of accessories that do not satisfy these requirements may not comply with FCC RF exposure requirements, and should be avoided.