



Feature

- ※ High gain
- ※ Omani-directional
- ※ Wide bandwidth

Main Antenna

Application

- ※ GSM850/900/DCS/PCS/WCDMA B1/B2/B4/B5/B8
- LTE B1/B2/B3/B4/B5/B7/B8/B17/B20/B28/B38/B40/B41/B66
- 5G NR n1/3/5/7/8/12/20/28/66/38/40/41/77/78

Manufacture

name: 浙江海通通讯电子股份有限公司上海分公司

ZHEJIANG HAITONG COMMUNICATION ELECTRONICS CO.,LTD.

Address: 上海市浦东新区秀浦路 2555 号康桥商务绿洲 C5 栋 1 楼

1st floor, Building C5, Kangqiao Business Oasis, No. 2555 Xiupu Road, Pudong New Area, Shanghai

Model

KI8-ANT 1/2/3/4/5/6/7/8

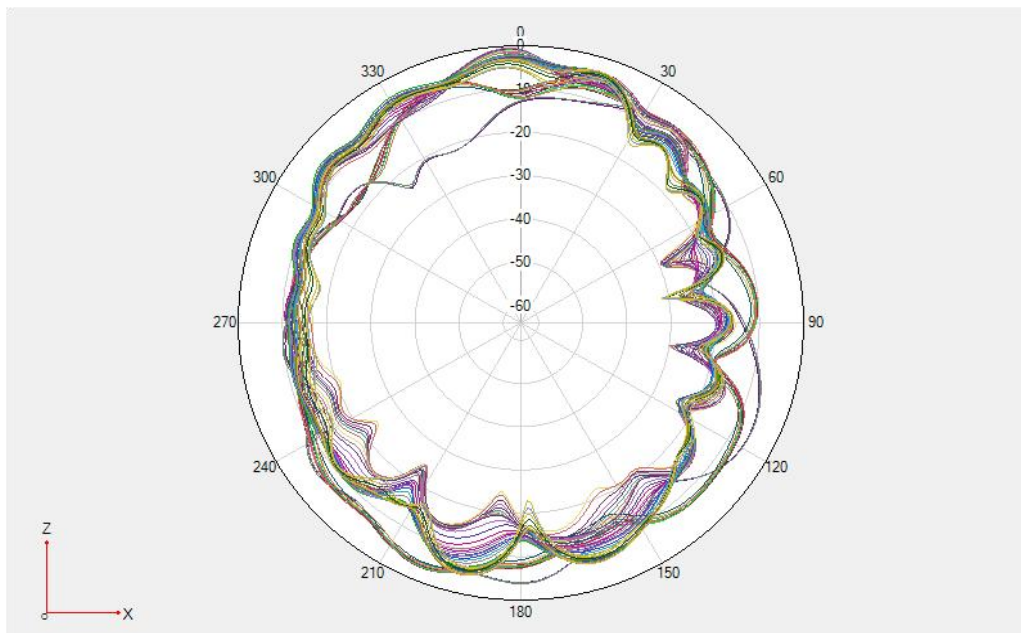


TYPE	
Transmitter Frequency	GSM 850/WCDMA B5/LTE B5 NR n5: 824 - 849 MHz
	GSM 900/WCDMA B8/LTE B8 NR n8: 880 - 915 MHz
	DCS /WCDMA B4/LTE B3/B4/B66 NR n3/n66: 1710 - 1785 MHz
	PCS/WCDMA B2/LTE B2:1850-1910MHz
	WCDMA B1/LTE B1 NR n1: 1920 - 1980MHz
	LTE B7 NR n7:2496-2565MHz
	LTE B40 NR n40:2300-2400MHz
	LTE B38/B41 NR n38/n41:2565-2645MHz
	LTE B20 NR n20:832-862MHz
	LTE B12/B17/B28 NR n12/n28:710-755MHz
NR n77/n78:3300-4200MHz	
Receiver Frequency	GSM 850/WCDMA B5/LTE B5 NR n5: 869 - 894 MHz
	GSM 900/WCDMA B8/LTE B8 NR n8: 925 - 960 MHz
	DCS/LTE B3/B66 NR n3/n66: 1805 - 1880 MHz
	WCDMA 4/LTE B4 NR n4: 2110-2155 MHz
	PCS/WCDMA B2/LTE B2:1930-1990MHz
	WCDMA B1/LTE B1 NR n1: 2110 - 2170MHz
	LTE B7 NR n7:2620-2690MHz
	LTE B40 NR n40:2300-2400MHz
	LTE B38/41 NR n38/n41:2565-2645MHz
	LTE B20 NR n20:791-821MHz
LTE B12/B17/B28 NR n12/n28:758-803MHz	
NR n77/n78:3300-4200MHz	
RF-Output Power (E.I.R.P)	GSM850/900: 32+/-2dBm
	DCS/PCS: 30+/-2dBm
	LTE B1/B2/B3/ B4/B5 /B7/B8/B17/B20/B28/B38/B40/B41/B66: 23+/-2dBm
	WCDMA B1/B2/B4/B5/ B8: 23+/-2dBm
Main Antenna Gain	GSM 850/WCDMA B5/LTE B5 NR n5: -1.5

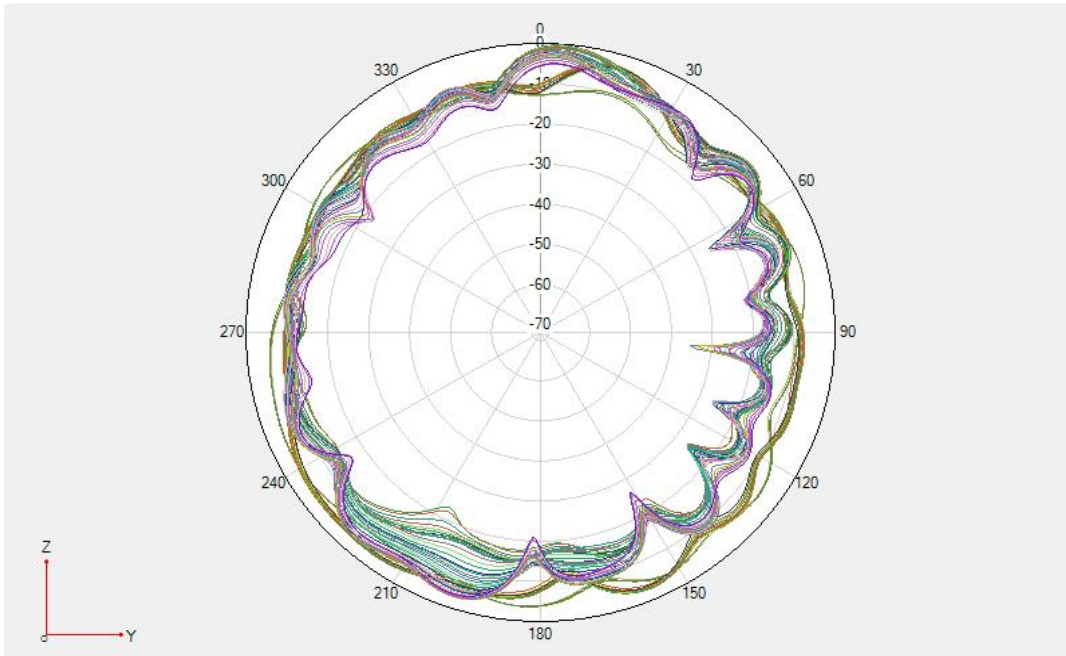
(Peak Gain)	GSM 900/WCDMA B8/LTE B8 NR n8: -1.3
	DCS /WCDMA B4/LTE B3/B4/B66 NR n3/n66: -0.7
	PCS/WCDMA B2/LTE B2: -0.5
	WCDMA B1/LTE B1 NR n1: -0.5
	LTE B7/B38/B40/B41 NR n7/n38/n40/n41: -0.4
	LTE B20 NR n20:-1.5
	LTE B12/B17/B28 NR n12/n17/n28:-1.9
	NR n77/n78:0.2
	GPS: -3. 31
3in1 Antenna Gain (Peak Gain)	WIFI 2.4G: -2. 45 5G: 0.12
Type of Modulation	

※ Antenna Gain

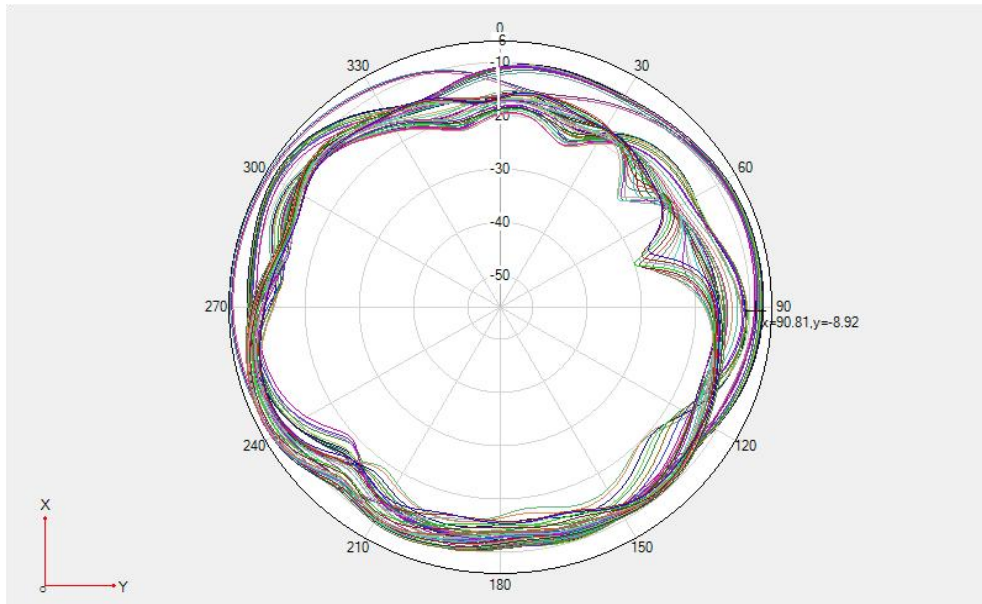
Antenna 1



GPS&2.4G WIFI&BT; 5G WIFI Phi=0deg



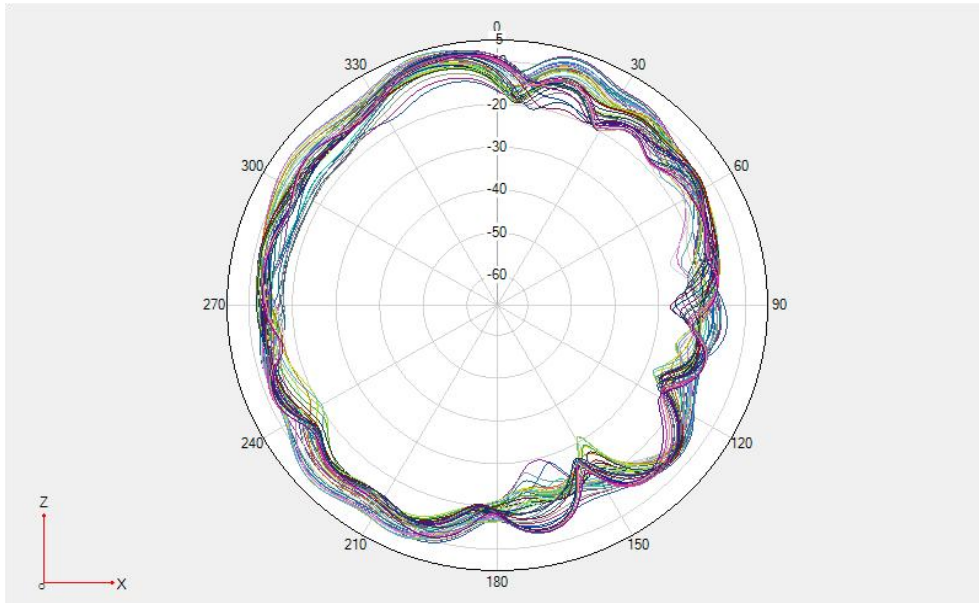
GPS&2.4G WIFI&BT; 5G WIFI Phi=90deg



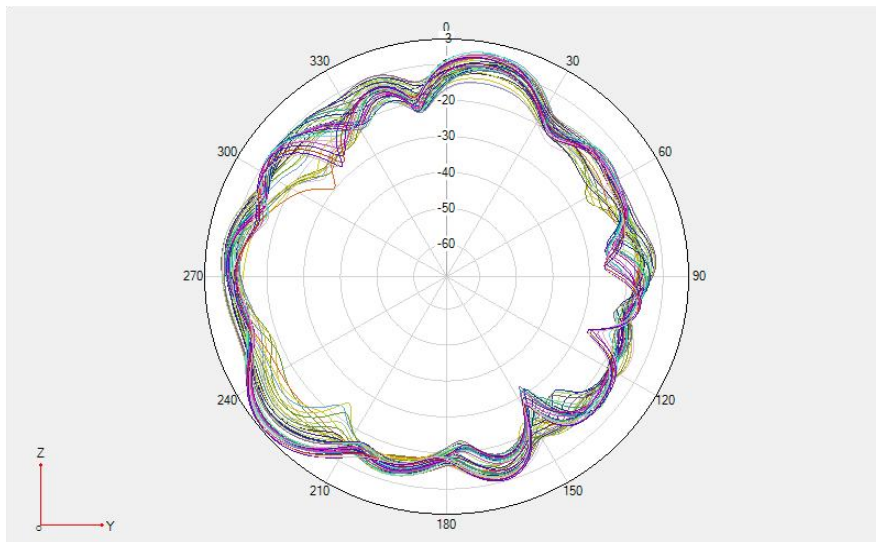
GPS&2.4G WIFI&BT; 5G WIFI Theta=90deg

※ Antenna Gain

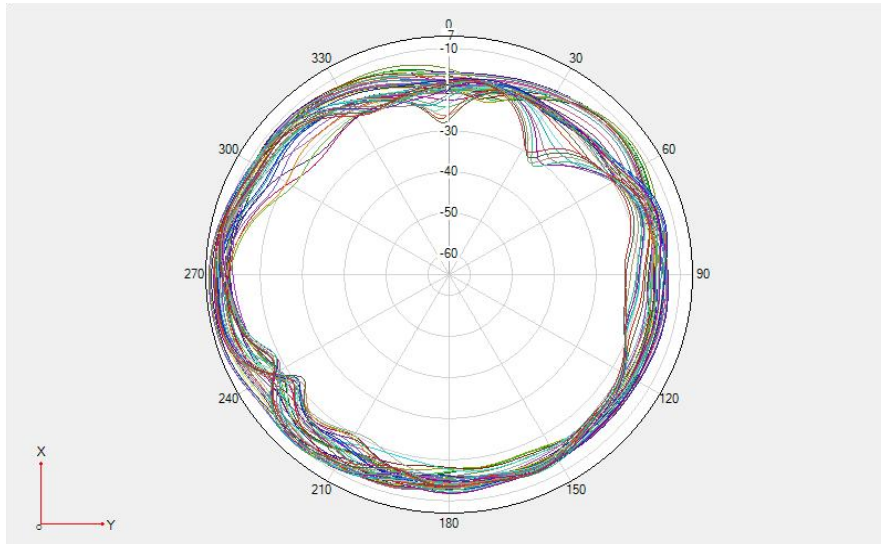
Antenna 2



n77/78 $\Phi=0^\circ$

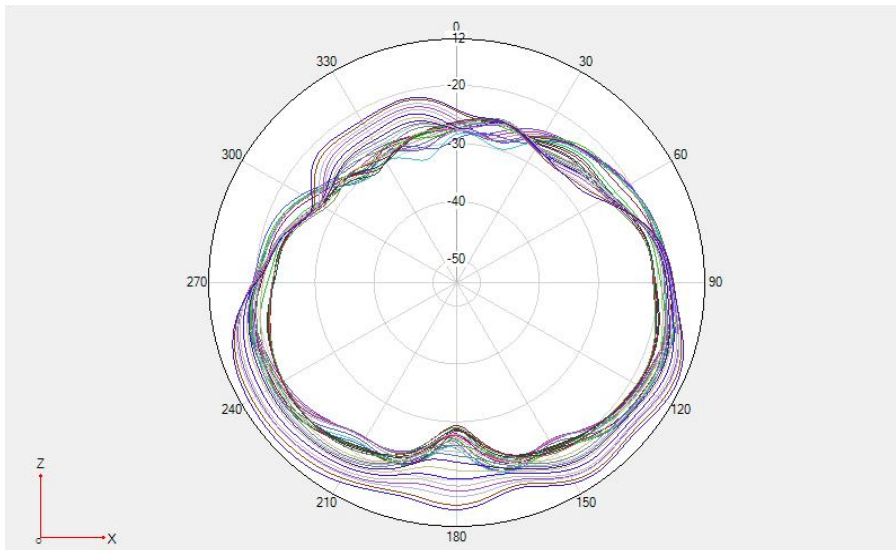


n77/78 $\Phi=90^\circ$

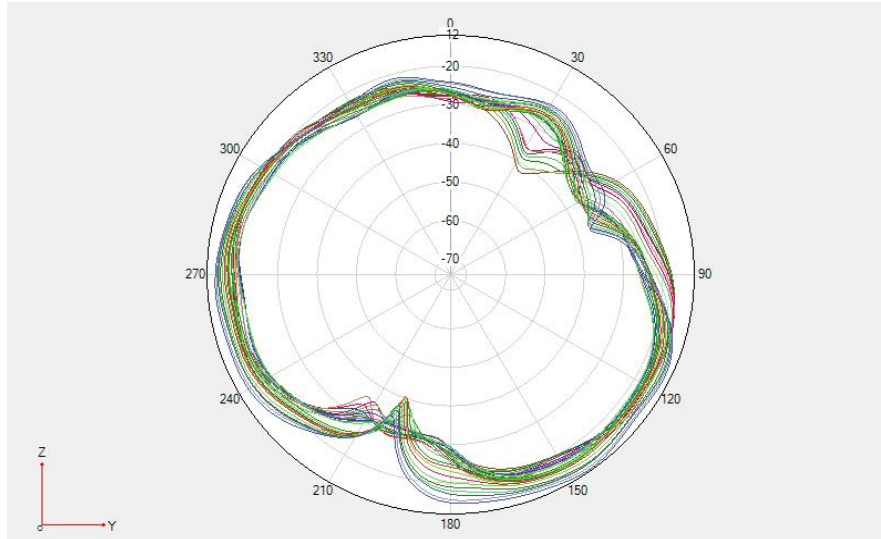


n77/78 Theta=90deg

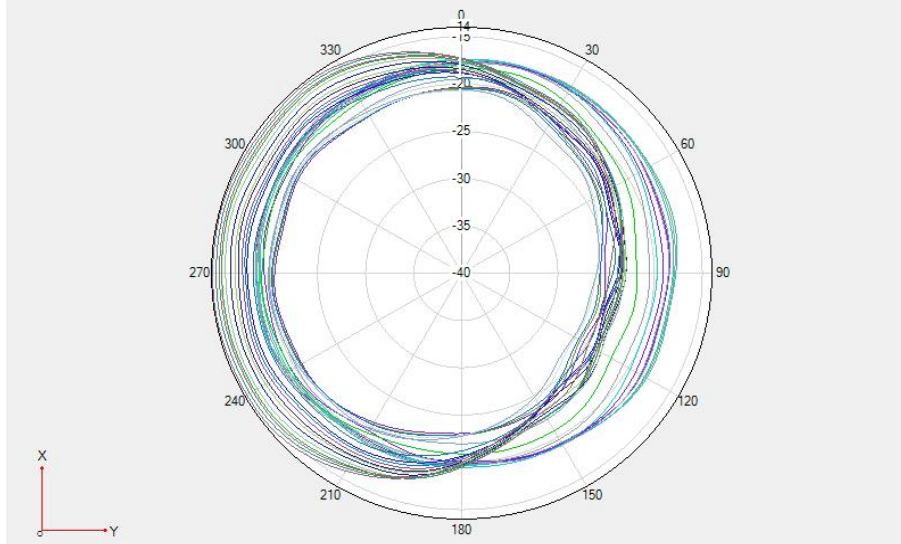
Antenna 7



GSM850/900 / WCDMA B5/B8 / LTE B5/B8/B12/B17/B20/B28 NR n5/n8/n20/n28 Phi=0deg



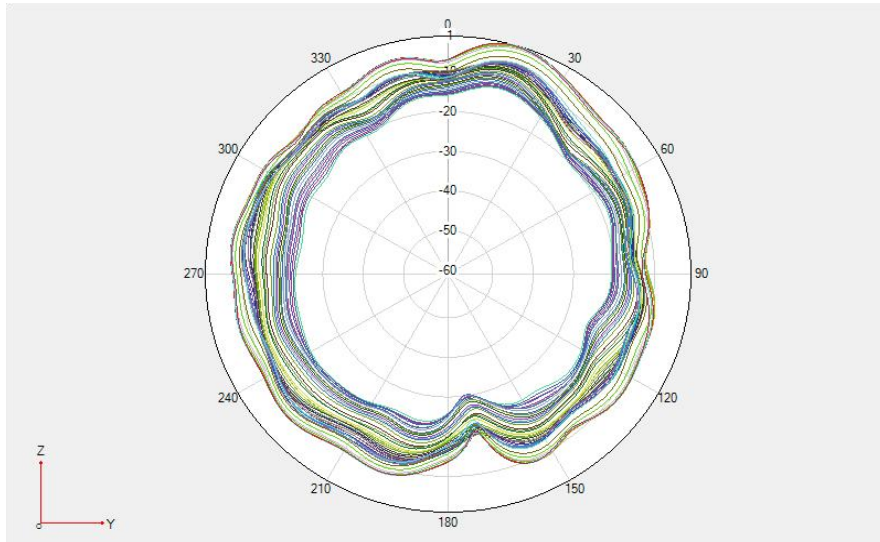
GSM850/900 / WCDMA B5/B8 / LTE B5/B8/B12/B17/B20/B28 NR n5/n8/n20/n28 Phi=90deg



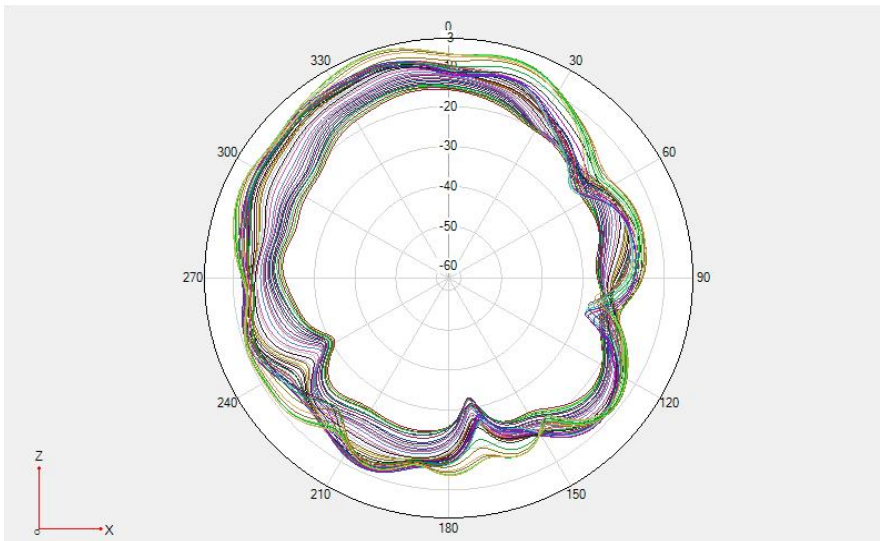
GSM850/900 / WCDMA B5/B8 / LTE B5/B8/B12/B17/B20/B28 NR n5/n8/n20/n28 Theta=90deg

※ Antenna Gain

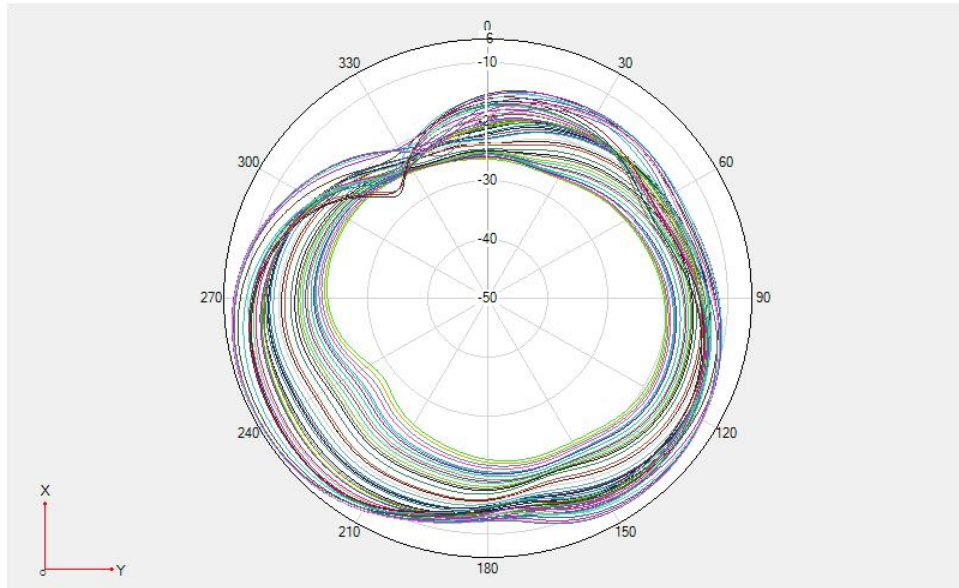
Antenna 7



DCS1800/PCS1900/WCDMA B1/B2/B4/ LTE B1/B2/B3/B4/B66 NR n1/n3 Phi=0deg



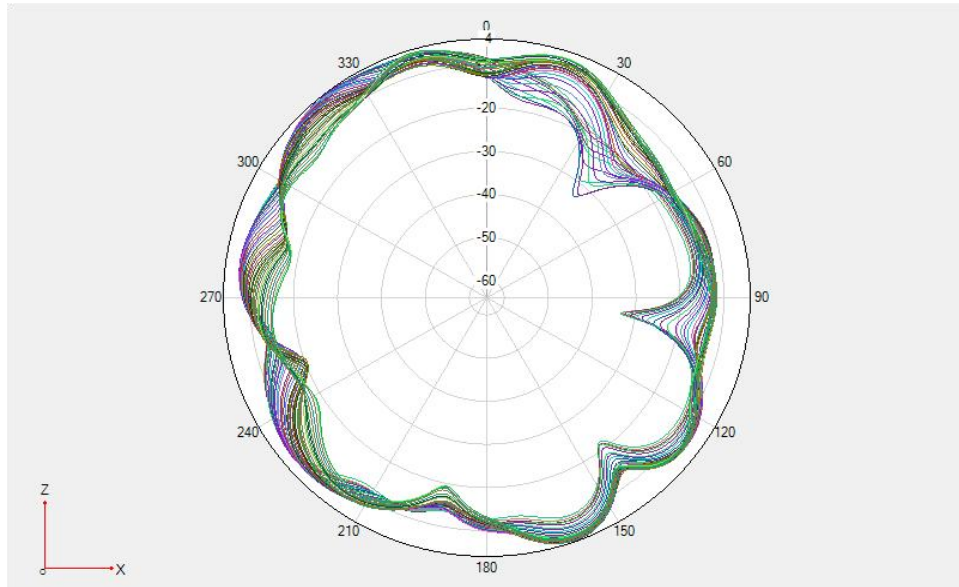
DCS1800/PCS1900/WCDMA B1/B2/B4/ LTE B1/B2/B3/B4/B66 NR n1/n3 Phi=90deg



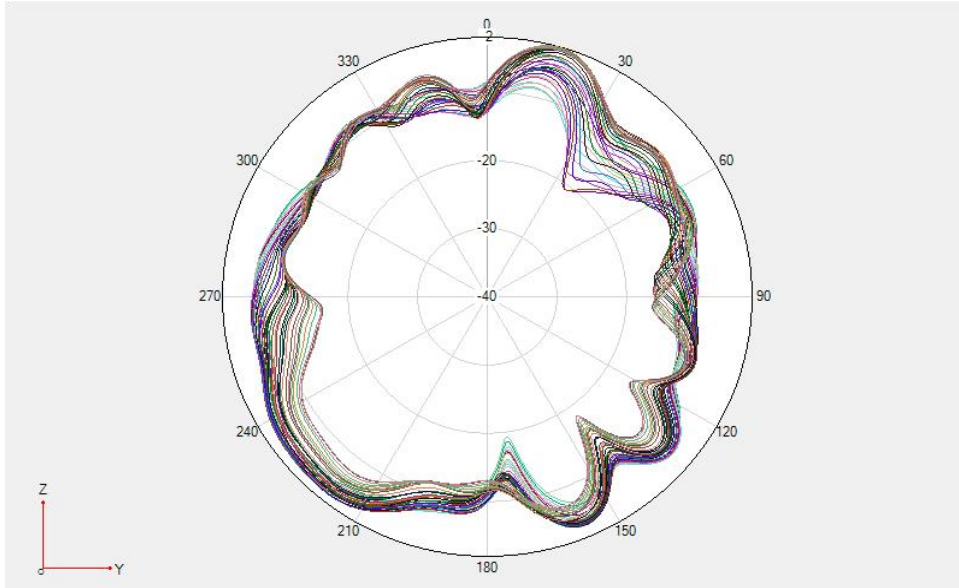
DCS1800/PCS1900/WCDMA B1/B2/B4/ LTE B1/B2/B3/B4/B66 NR n1/n3 Theta=90deg

※ Antenna Gain

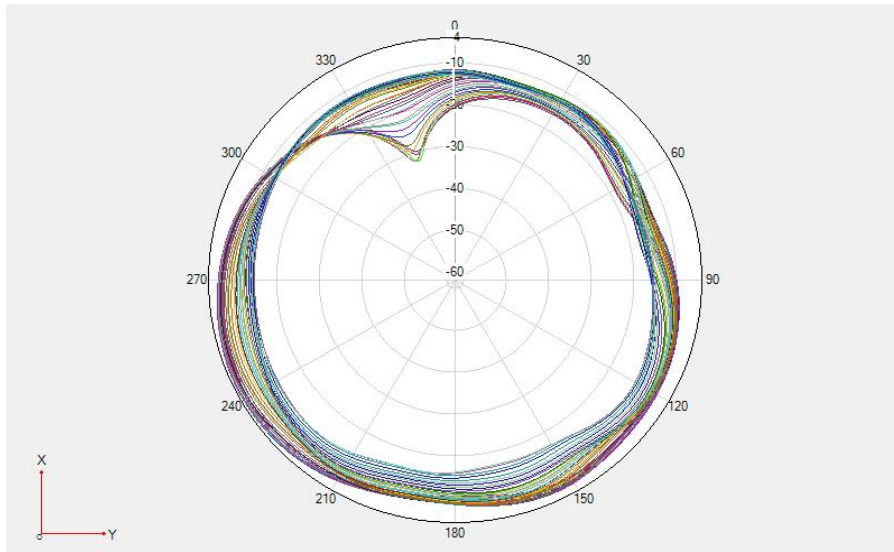
Antenna 7



LTE B7/B38/B40/41 NR n7/n38/n40/n41 Phi=0deg



LTE B7/B38/B40/41 NR n7/n38/n40/n41 $\Phi=90^\circ$



LTE B7/B38/B40/41 NR n7/n38/n40/n41 $\Theta=90^\circ$



PREPARED BY	CHECKEDBY	APPROVAL BY	S.R.NO	
	Yuehua.sun		DATE:	2022/9/27