



Feature

- ※ High gain
- ※ Omani-directional
- ※ Wide bandwidth

Main Antenna

Application

※GSM850/900/DCS/PCS/WCDMA B1/B2/B4/B5/B8
LTE B1/B2/B3/B4/B5/B7/B8/B12/B13/B17/B28/B38/B41/B66
communication applications

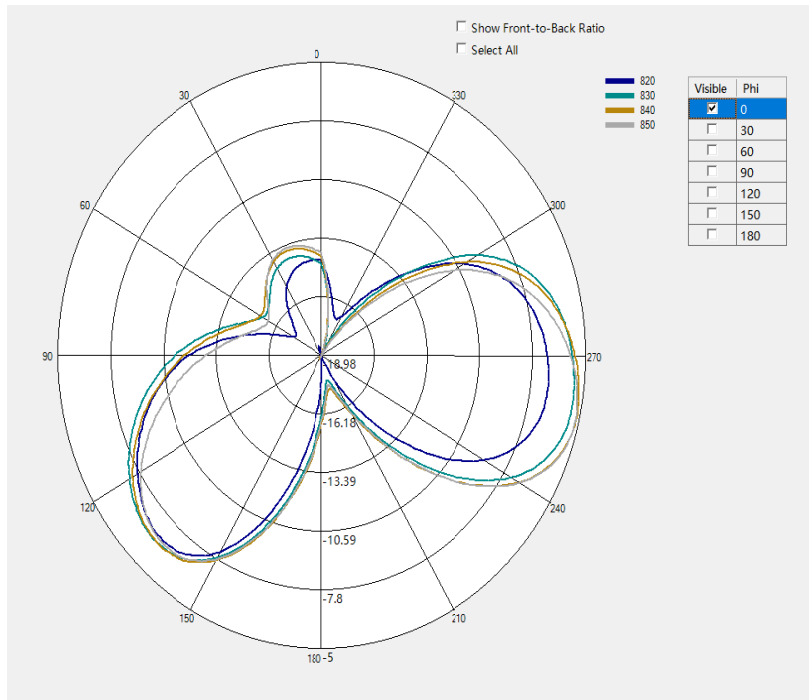
Project	Name and address of the antenna manufacturer	Model number of the antenna
KI5qs	Name: Etheta Communication Technology (Shenzhen) CO.,Ltd ADD: No.401, Building 6, Zhangfeng Road, Oriental Community, Songgang Street, Bao'an District, Shenzhen	Main antenna: KI5QS-ANT2-V1.0 DIV antenna: KI5QS-ANT3-V1.0 WCN antenna: KI5QS-ANT1-V1.0



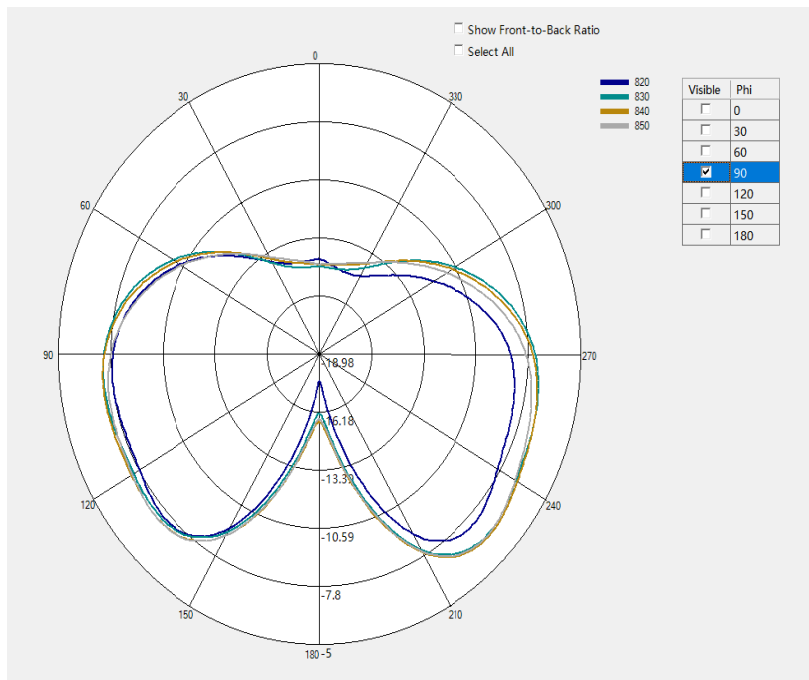
Transmitter Frequency	GSM 850/WCDMA B5/LTE B5: 824 - 849 MHz
	DCS /WCDMA B4/LTE B3/B4/B66: 1710 - 1785 MHz
	PCS/WCDMA B2/LTE B2:1850-1910MHz
	WCDMA B1/LTE B1: 1920 - 1980MHz
	LTE B7:2496-2565MHz
	LTE B38/B41:2565-2645MHz
	LTE B12/B13/B17/B28:710-755MHz
Receiver Frequency	GSM 850/WCDMA B5/LTE B5: 869 - 894 MHz
	DCS/LTE B3/B66: 1805 - 1880 MHz
	WCDMA 4/LTE B4: 2110-2155 MHz
	PCS/WCDMA B2/LTE B2:1930-1990MHz
	WCDMA B1/LTE B1: 2110 - 2170MHz
	LTE B7:2620-2690MHz
	LTE B38/41:2565-2645MHz
LTE B12/B13/B17/B28:758-803MHz	
Main Antenna Gain (Peak Gain)	GSM 850/WCDMA B5/LTE B5: -5.01dBi
	DCS/WCDMA B4/ LTE B3/B4/B66: -3.03dBi
	PCS/WCDMA B2/LTE B2: -2.53dBi
	WCDMA B1/LTE B1: -0.5dBi
	LTE B7/B38/B41: -1.6dBi
LTE B12/B13/B17/B28:-7.88dBi	
3in1 Antenna Gain (Peak Gain)	BT/2.4G Wi-Fi: 1.74dBi 5G Wi-Fi: 1.70dBi



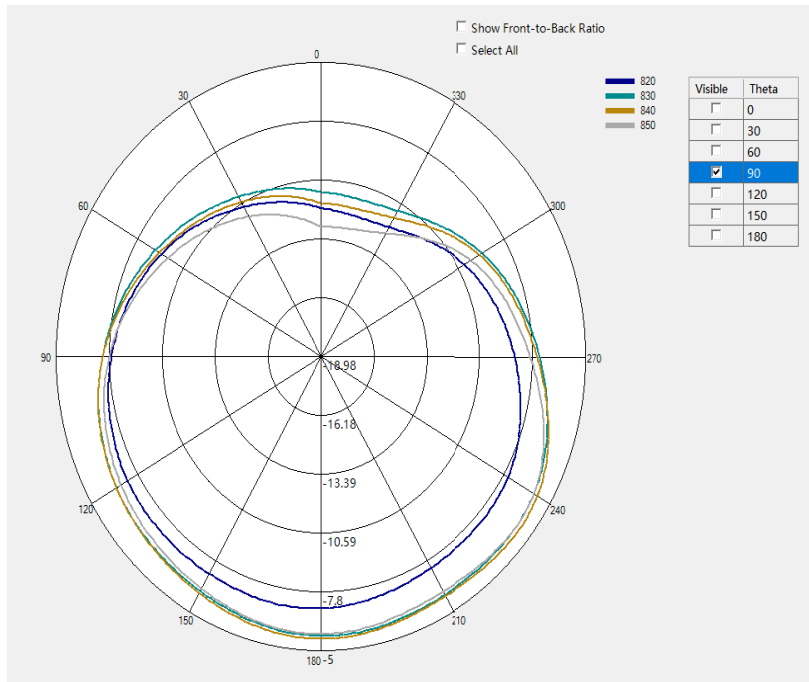
✂ Antenna Gain
Main Antenna



GSM850 / WCDMA B5 / LTE B5 Phi=0deg



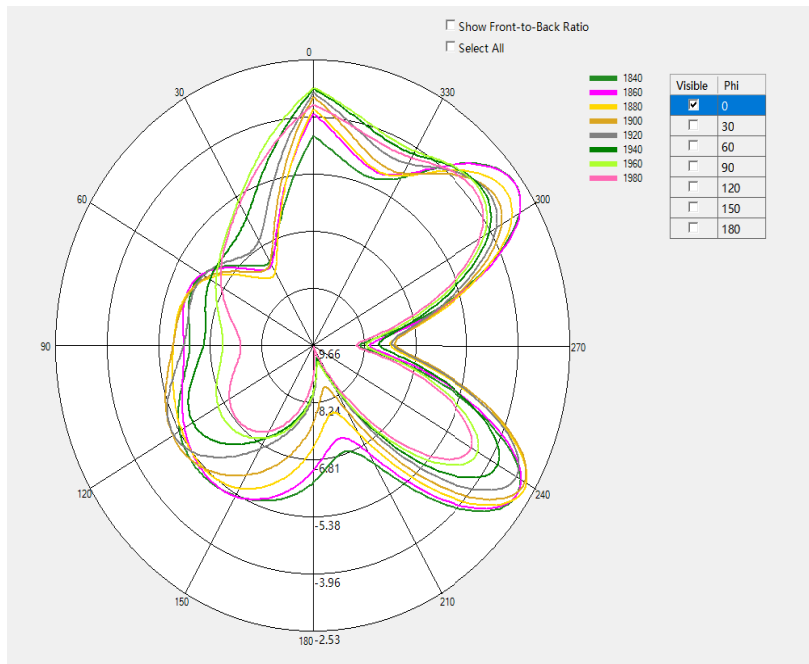
GSM850 / WCDMA B5 / LTE B5 Phi=90deg



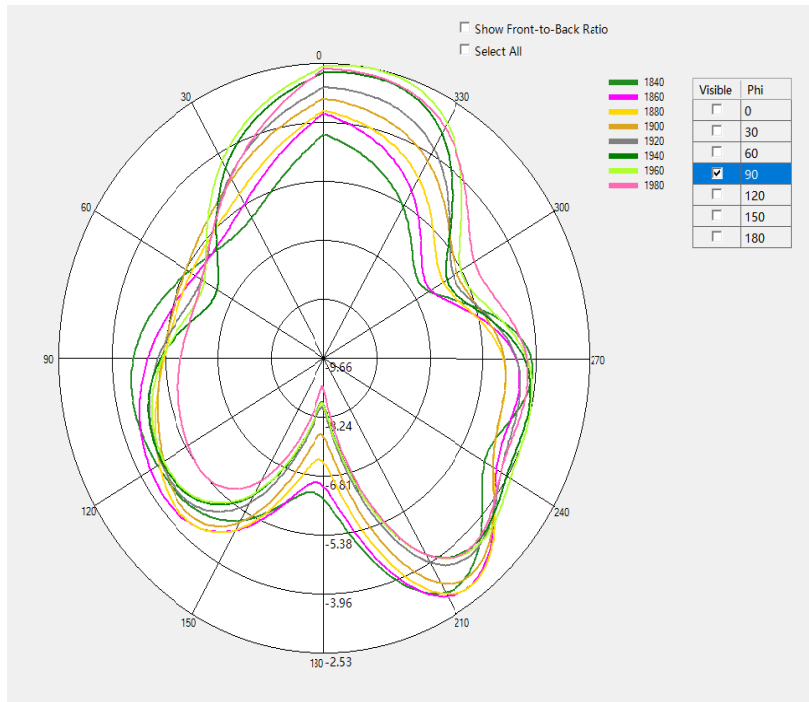
GSM850 / WCDMA B5 / LTE B5 Theta=90deg

✧ Antenna Gain

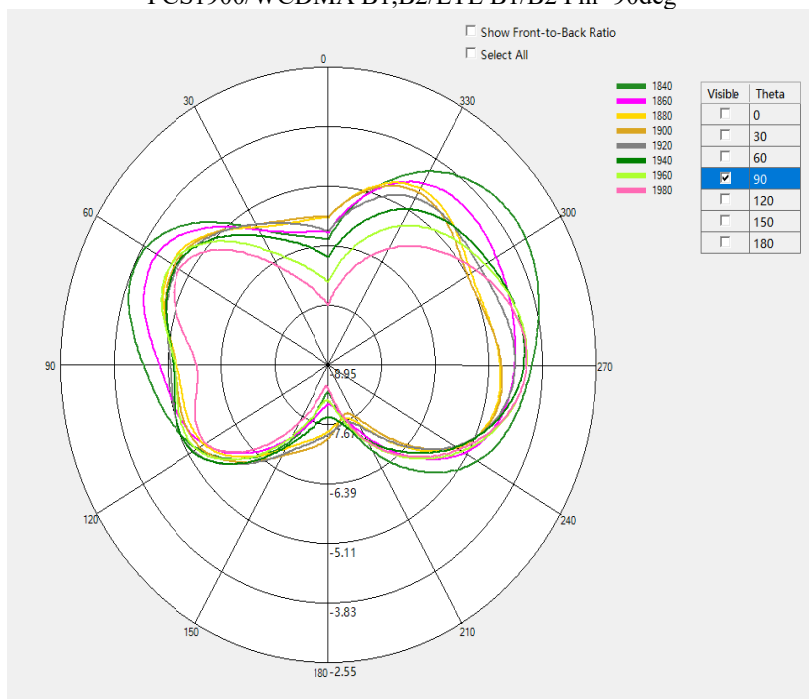
Main Antenna



PCS1900/WCDMA B1,B2/LTE B1/B2Phi=0deg



PCS1900/WCDMA B1,B2/LTE B1/B2 Phi=90deg

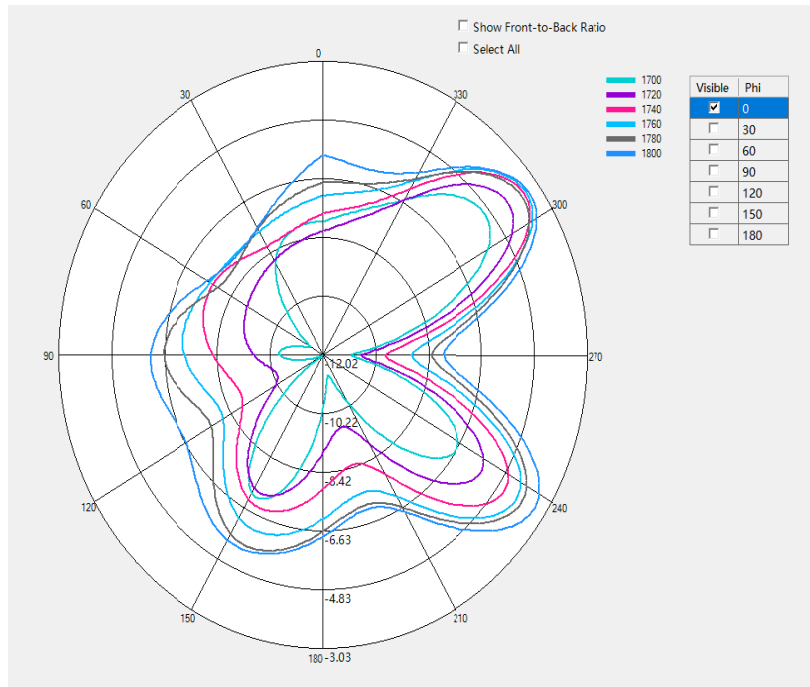


PCS1900/WCDMA B1,B2/LTE B1/B2 Theta=90deg

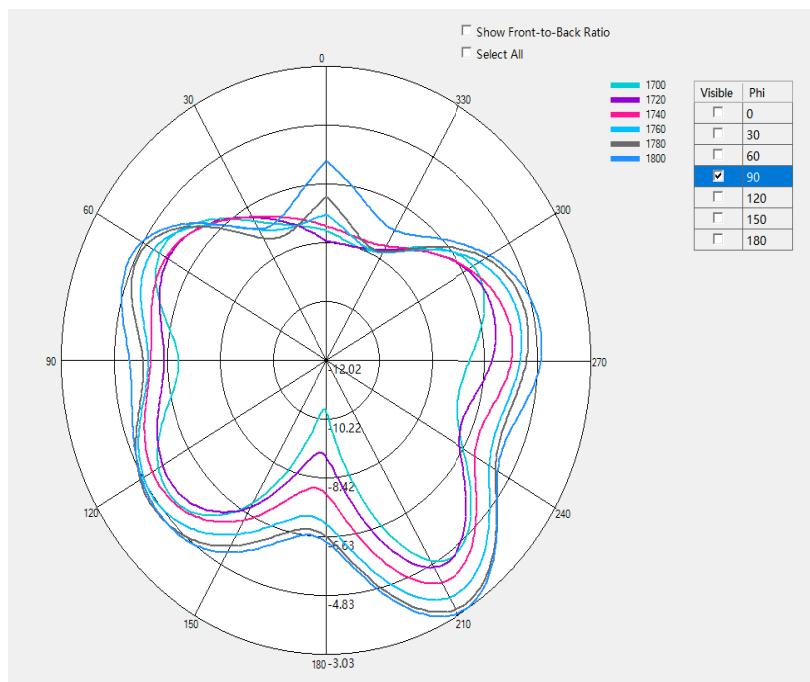


✧ Antenna Gain

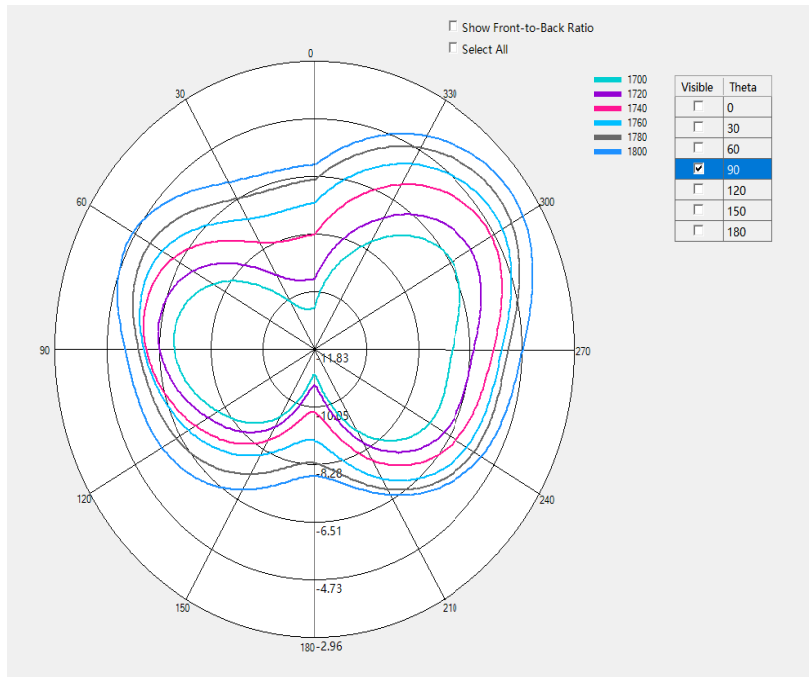
Main Antenna



DCS1800/ WCDMA B4 /LTE B3/B4/B66Phi=0deg



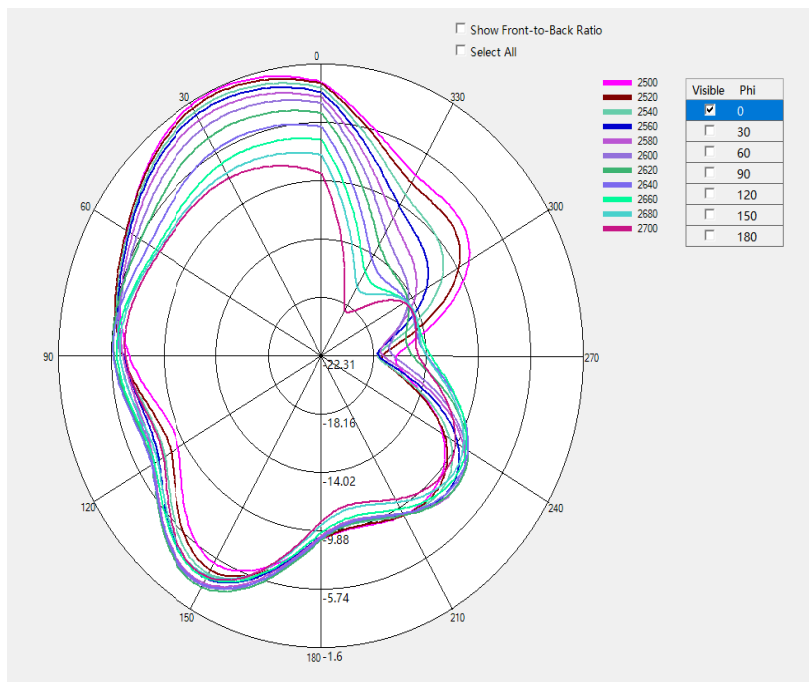
DCS1800/ WCDMA B4 /LTE B3/B4/B66Phi=90deg



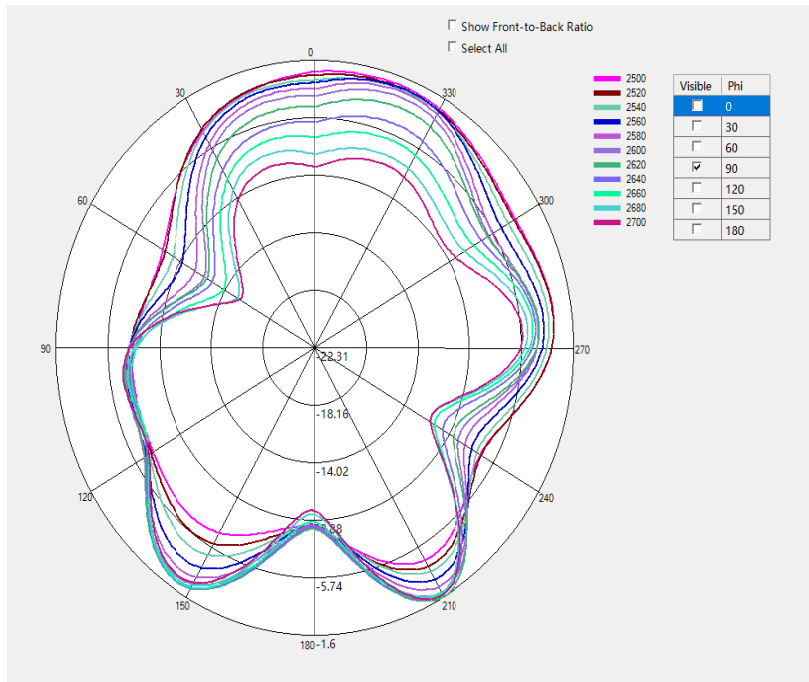
DCS1800/ WCDMA B4 /LTE B3/B4/B66Theta=90deg

※Antenna Gain

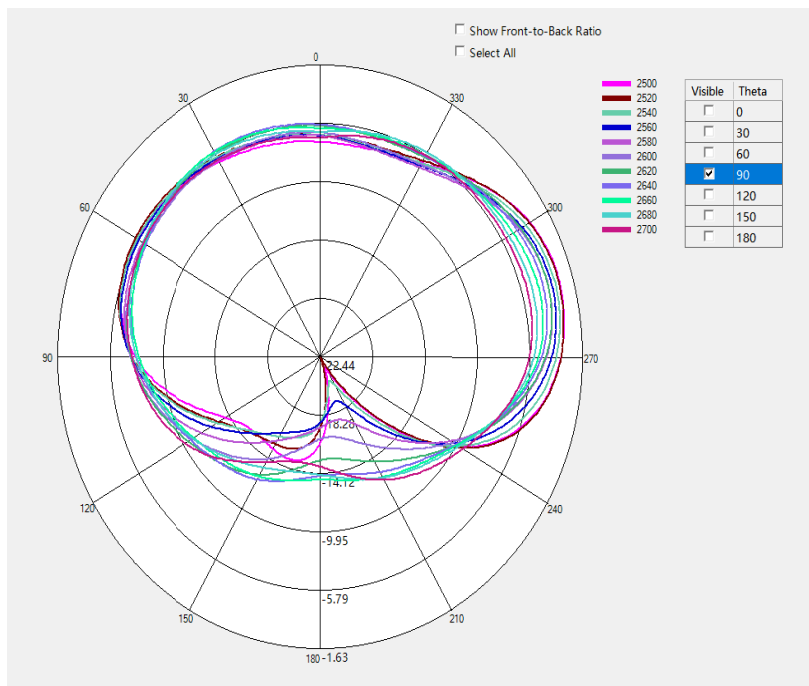
Main Antenna



LTE B7/B38/41 Phi=0deg



LTE B7/B38/41 Phi=90deg

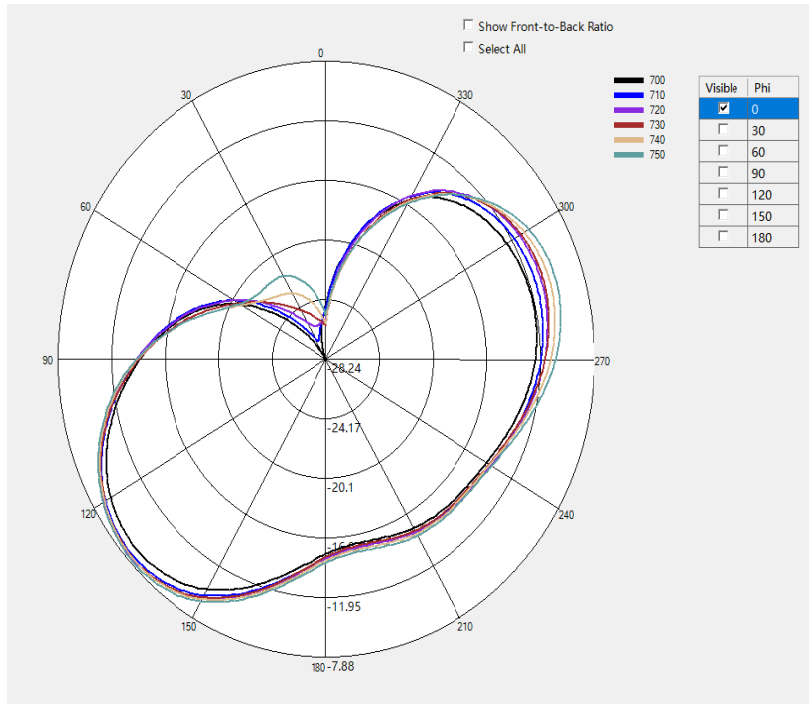


LTE B7/B38/41 Theta=90deg

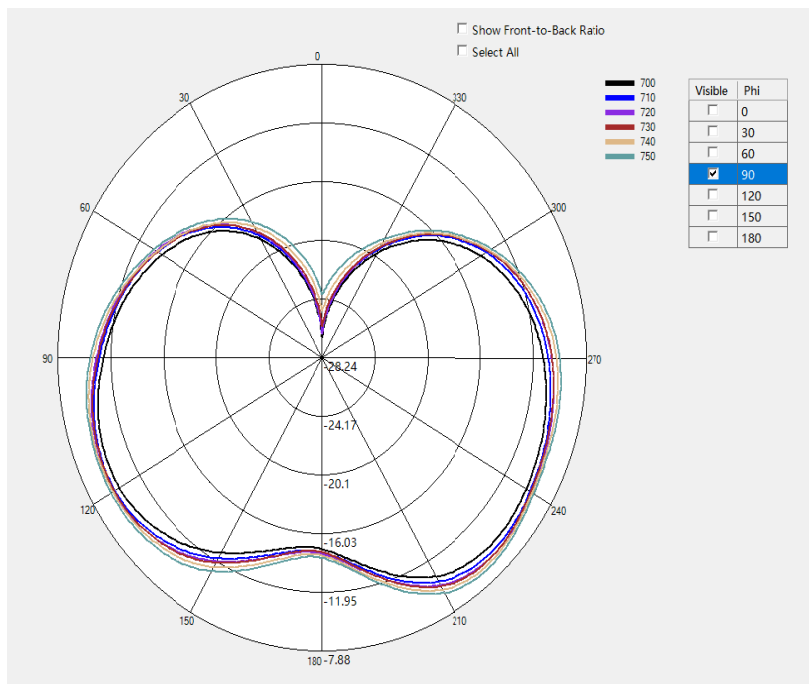


✂ Antenna Gain

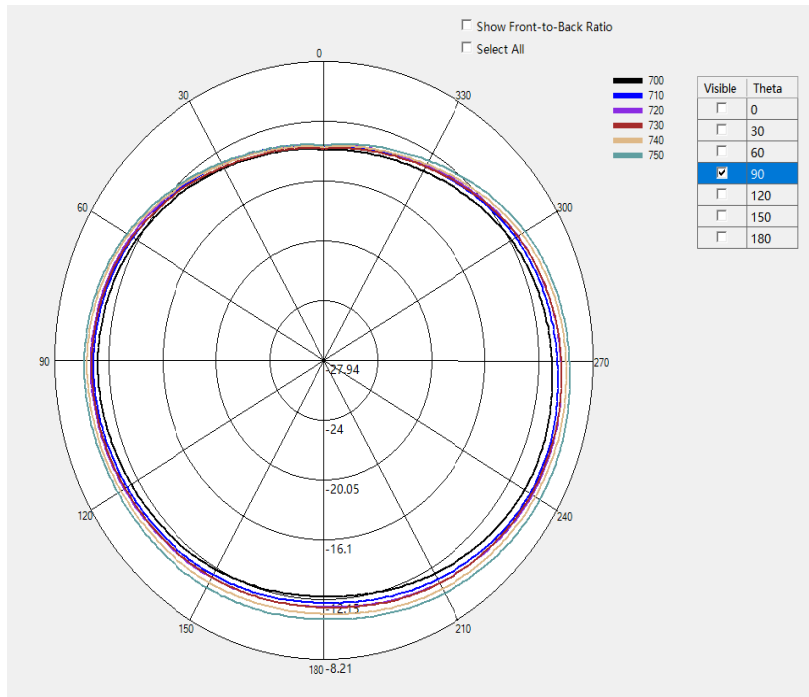
Main Antenna



LTE B12/B13/B17/ B28 Phi=0deg

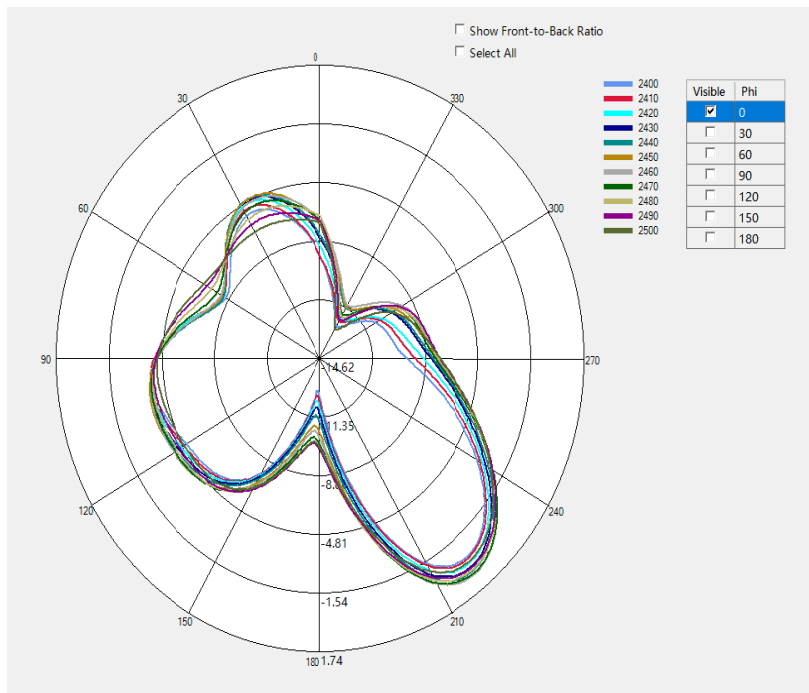


LTE B12/B13/B17/ B28 Phi=90deg

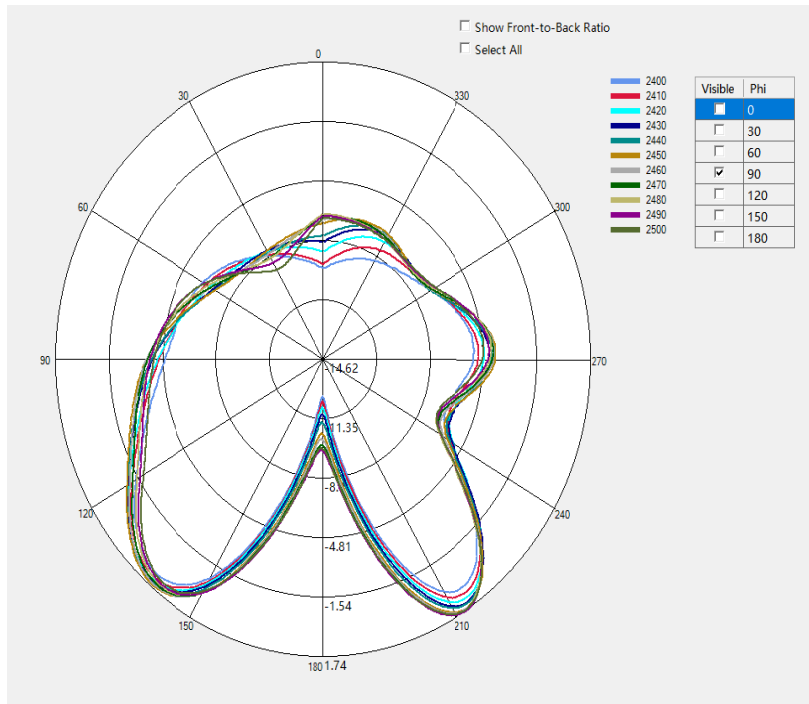


LTE B12/B13/B17/ B28 Theta=90deg

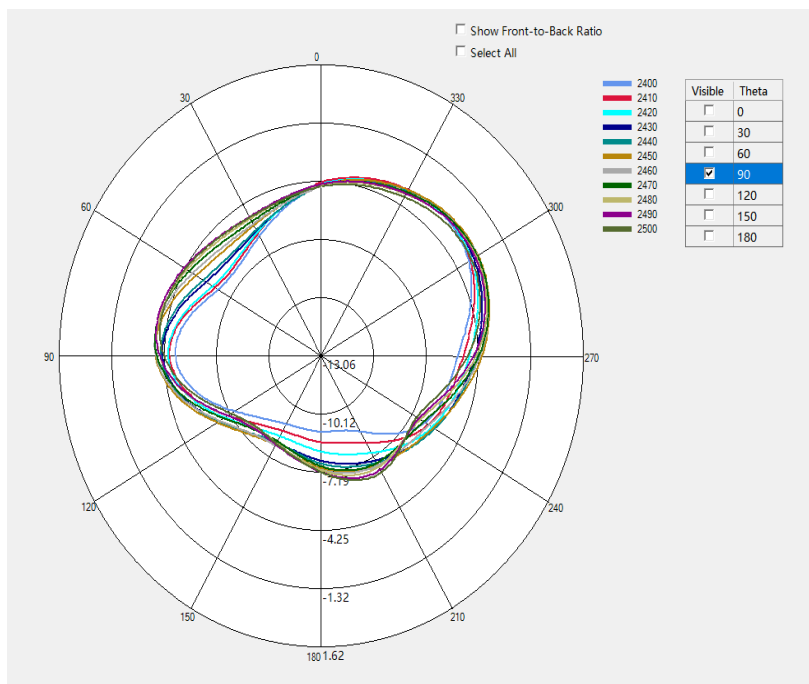
※ Antenna Gain
2.4G WIFI&BT Antenna



2.4G WIFI&BT Phi=0deg



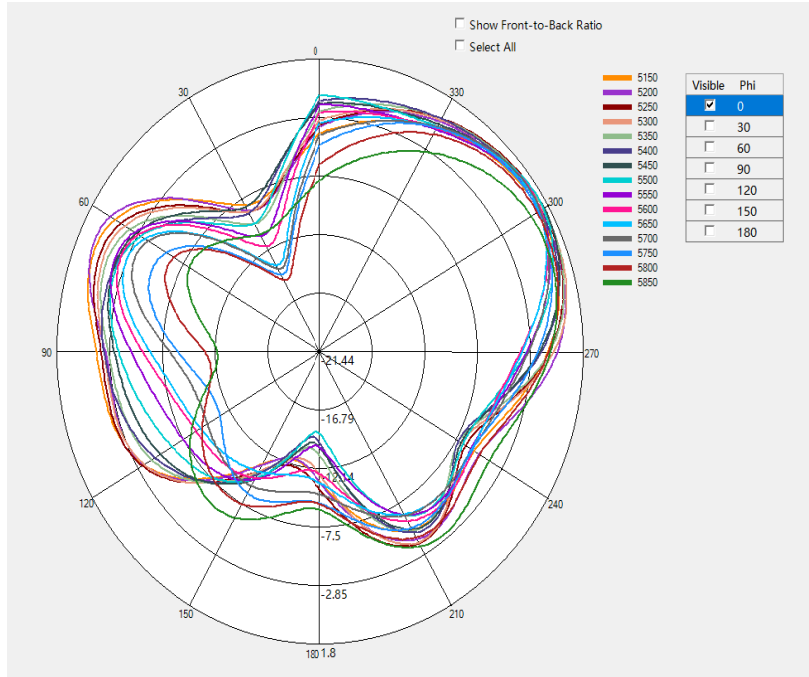
2.4G WIFI&BT Phi=90deg



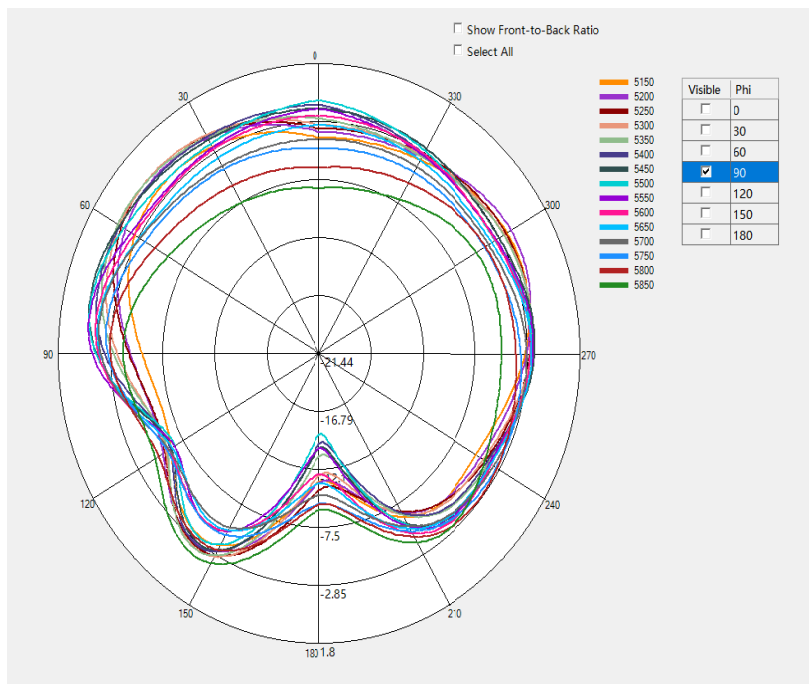
2.4G WIFI&BT Theta=90deg



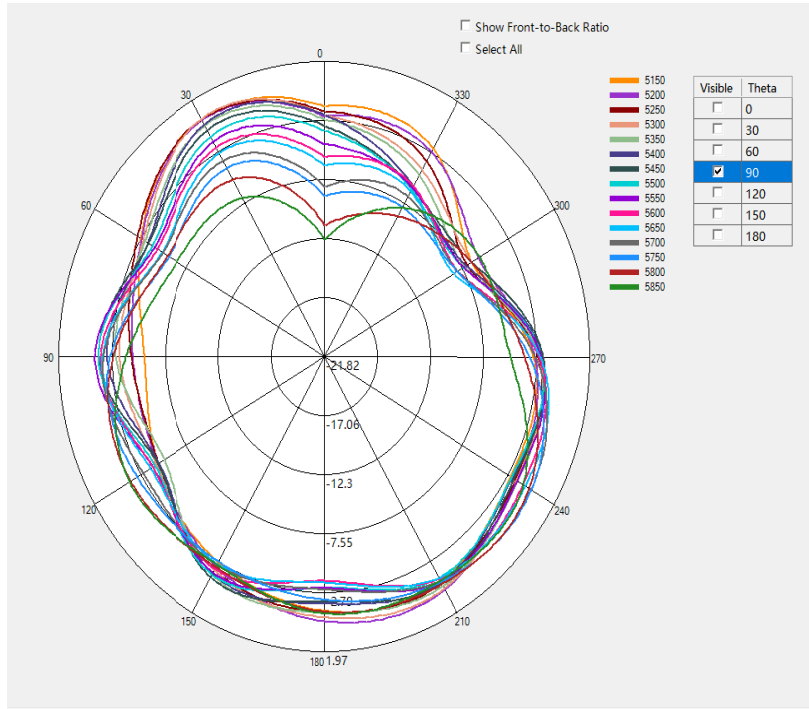
✧ Antenna Gain
5G WIFI Antenna



5G WIFI Phi=0deg



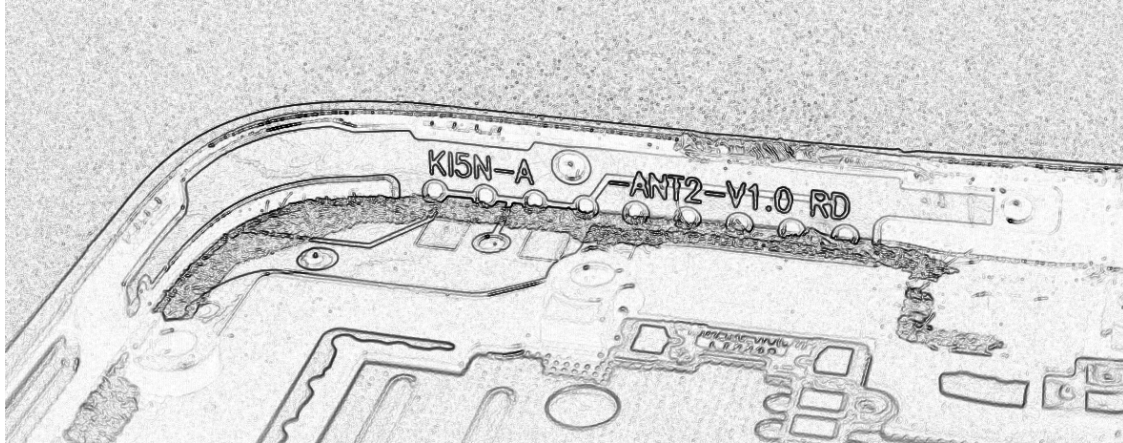
5G WIFI Phi=90deg



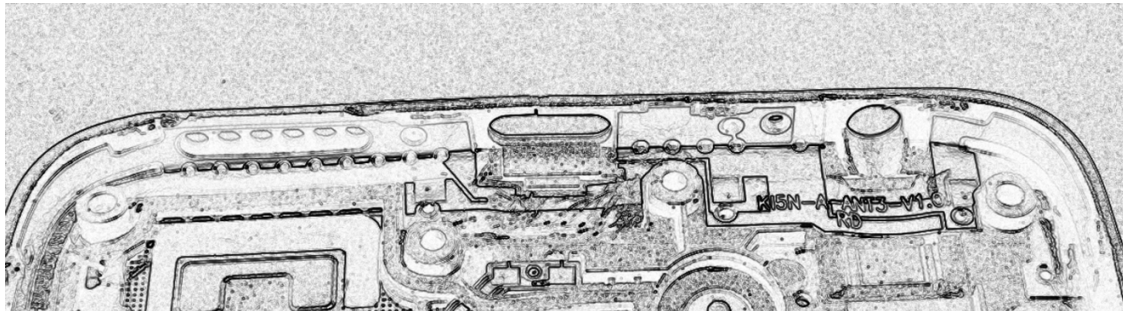
5G WIFI Theta=90deg

Antenna Photo:

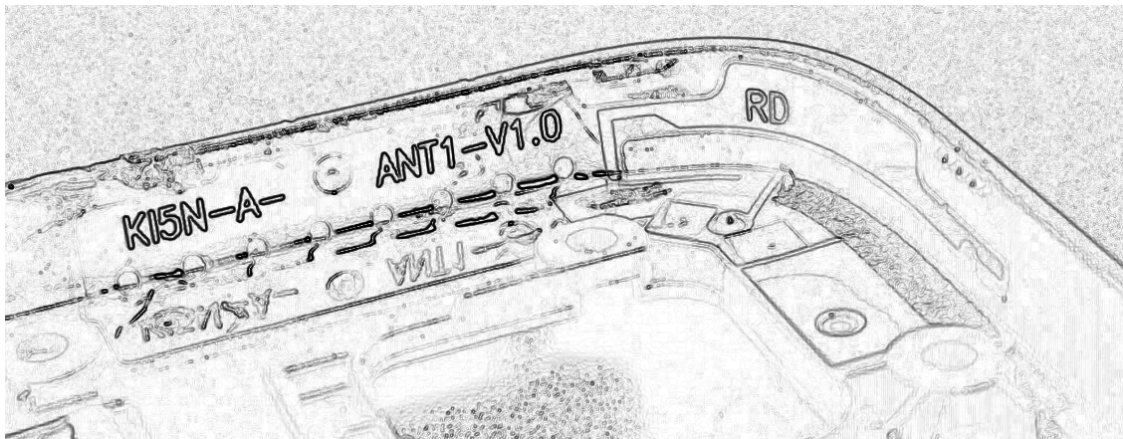
Main antenna:



DIV antenna:



WCN antenna:



PREPARED BY	CHECKEDBY	APPROVAL BY	S.R.NO	
	Yuehua.sun		DATE:	2023/3/3