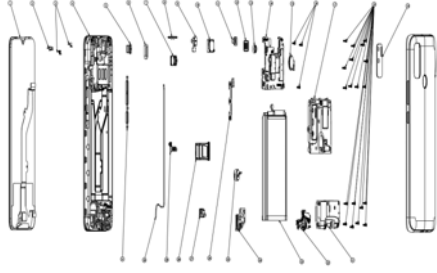


**TECNO KD6
User Manual**

FCC ID: 2ADYY-KD6

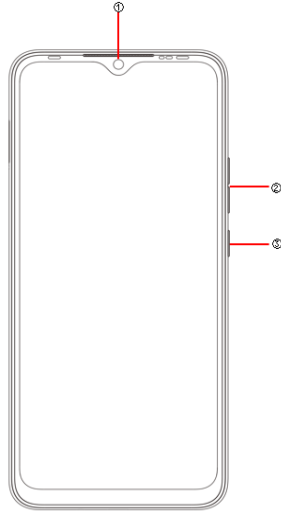
TECNO MOBILE LIMITED

Explosion diagram specification



1	FL(CTP+LCM) 6.95HD+ LC7	2	LT sensor light guide KD6
	Black TCL V1.0		
3	F flash lens KD6	4	F hsg KD6 Black PC+20%GF
5	8W R CAM	6	R flash Lens KD6
7	I 3M R CAM	8	Rec Deco KD6
9	8M F CAM	10	REC KD6
11	F CAM rubber KD6	12	REC support steel
13	R CAM 8W rubber KD6	14	MAIN PCBA KD6
15	FINGER PRINT KD6	16	SCREW L2.5
17	UP FRAME KD6	18	SCREW L3.5
19	R CAM Lens KD6	20	Bat cover KD6
21	DOWN FRAME KD6	22	SUB PCBA KD6
23	BATTERY KD6	24	EARJACK RUBBER KD6
25	MOTOR KD6	26	SIDE KEY FPC
27	USB RUBBER KD6	28	Card holder KD6
29	FP STEEL KD6	30	RF LINE KD6
31	SIDE KEY KD6		

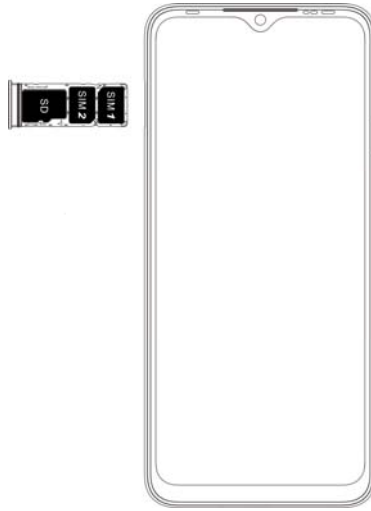
Know your phone



1. Front camera
2. Volume key
3. Power key

SIM/SD card installation

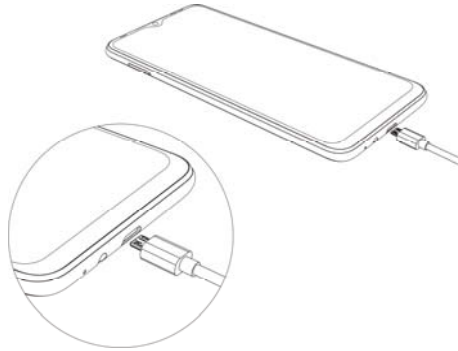
1. Power off mobile.
2. Refer to the following picture for SIM / SD card installation.



Charging the phone

You can charge your device using a charger or by connecting it to the computer using a USB cable (comes with the phone).

1. Please remind the front and back of the plug.
2. Use only TECNO charger and cables. Other chargers or cables may damage the device. This will invalidate your phone warranty.



Emergency call

If any emergency arises, dial 112/911 (or other emergency call number) for emergency help.

Due to the nature of cellular networking, the success of emergency call is not guaranteed.

FCC Warning:

This device complies with part 15 of the FCC Rules. Operation is subject to the following two conditions: (1) This device may not cause harmful interference, and (2) this device must accept any interference received, including interference that may cause undesired operation.

Any Changes or modifications not expressly approved by the party responsible for compliance could void the user's authority to operate the equipment.

This equipment has been tested and found to comply with the limits for a Class B digital device, pursuant to part 15 of the FCC Rules. These limits are designed to provide reasonable protection against harmful interference in a residential installation. This equipment generates uses and can radiate radio frequency energy and, if not installed and used in accordance with the instructions, may cause harmful interference to radio communications. However, there is no guarantee that interference will not occur in a particular installation. If this equipment does cause harmful interference to radio or television reception, which can be determined by turning the equipment off and on, the user is encouraged to try to correct the interference by one or more of the following measures:

- Reorient or relocate the receiving antenna.
- Increase the separation between the equipment and receiver.
- Connect the equipment into an outlet on a circuit different from that to which the receiver is connected.
- Consult the dealer or an experienced radio/TV technician for help.

The SAR limit of USA (FCC) is 1.6 W/kg averaged over one gram of tissue. Device types KD6 (FCC ID: 2ADYY-KD6) has also been tested against this SAR limit. The highest reported SAR values for head, body-worn accessory, and product specific (Hotspot) are 1.08 W/kg, 0.49 W/kg, and 0.70 W/kg respectively. The Max simultaneous SAR is 1.34W/kg. This device was tested for typical body-worn operations with the back of the handset kept 10mm from the body. To maintain compliance with FCC RF exposure requirements, use accessories that maintain a 10mm separation distance between the user's body and the back of the handset. The use of belt clips, holsters and similar accessories should not contain metallic components in its assembly. The use of accessories that do not satisfy these requirements may not comply with FCC RF exposure requirements, and should be avoided.