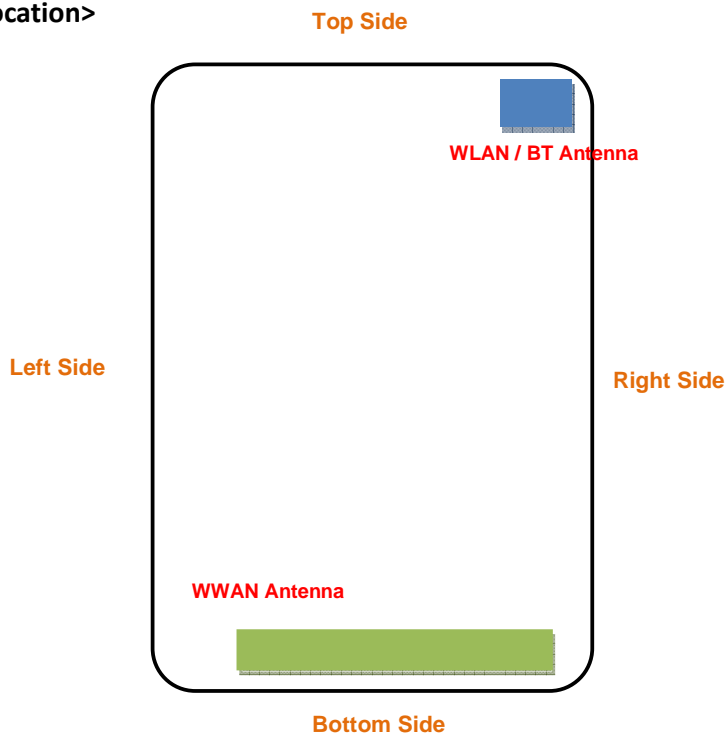


<Photographs of EUT>



<Antenna Location>

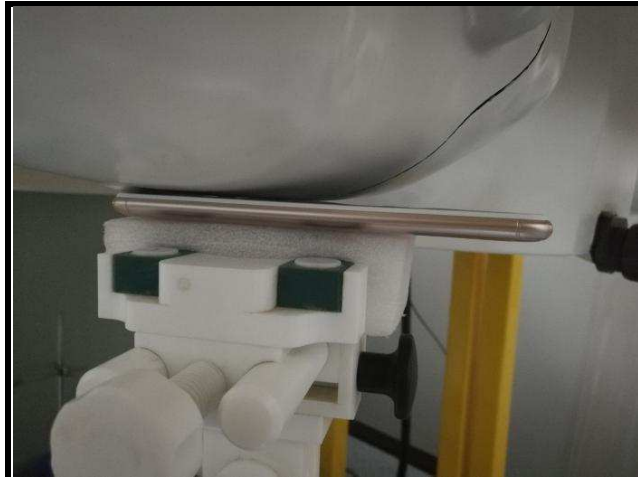


<EUT Front View>

The separation distance for antenna to edge:

Antenna	overall diagonal	overall diagonal	To Left Side (mm)	To Right Side (mm)	To Top Side (mm)	To Bottom Side (mm)
WWAN	156	139	20	12	133	2
WLAN / BT			42	12	2	140

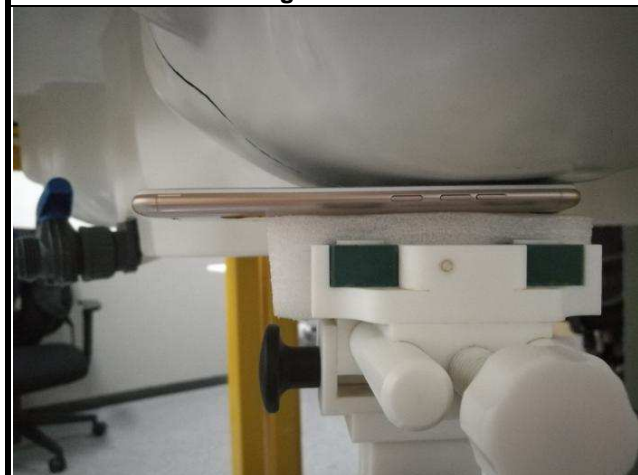
<Photographs of SAR Setup>



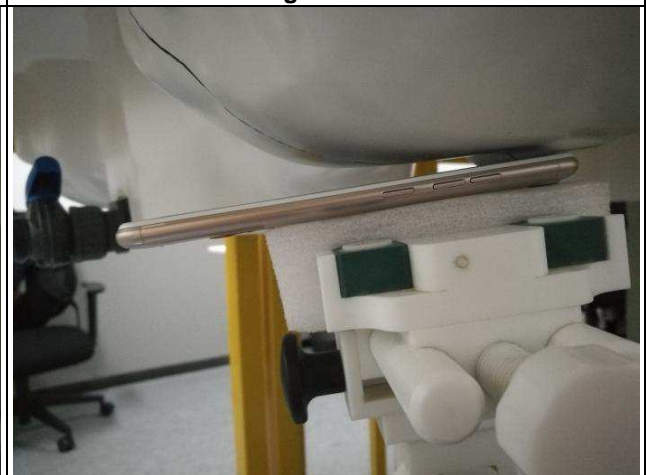
Right Cheek



Right Tilted



Left Cheek



Left Tilted



Front Face of EUT with 1.0 cm Gap



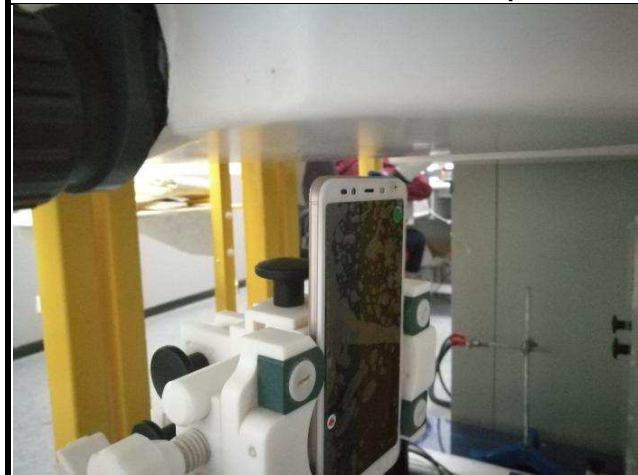
Rear Face of EUT with 1.0 cm Gap



Left Side of EUT with 1.0 cm Gap



Right Side of EUT with 1.0 cm Gap



Top Side of EUT with 1.0 cm Gap



Bottom Side of EUT with 1.0 cm Gap