



SATIMO 225, rue Pierre Rivoalon 29200 Brest - France  
Tel: +33 (0)2 98 05 13 34; Fax: +33 (0)2 98 05 53 87; www.satimo.com



## **Annex A: System Check**

**Tested Model : CX Air**

**Report Number:  
FCC17030129A-6**

## MEASUREMENT 1

### BODY

Type: Validation measurement (Complete)

Date of measurement: 21/3/2017

Measurement duration: 11 minutes 54 seconds

### **A. Experimental conditions.**

<b><u>Area Scan</u></b>	<u>dx=8mm dy=8mm</u>
<b><u>ZoomScan</u></b>	<u>5x5x7, dx=8mm dy=8mm</u> <u>dz=5mm, Complete</u>
<b><u>Phantom</u></b>	<u>Validation plane</u>
<b><u>Device Position</u></b>	<u>Dipole</u>
<b><u>Band</u></b>	<u>CW835</u>
<b><u>Channels</u></b>	<u>Middle</u>
<b><u>Signal</u></b>	<u>CW (Crest factor: 1.0)</u>

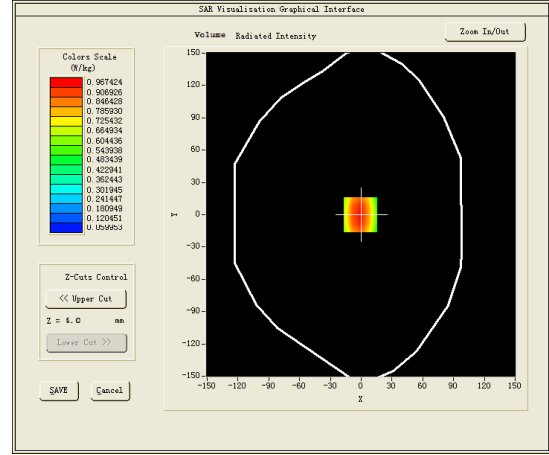
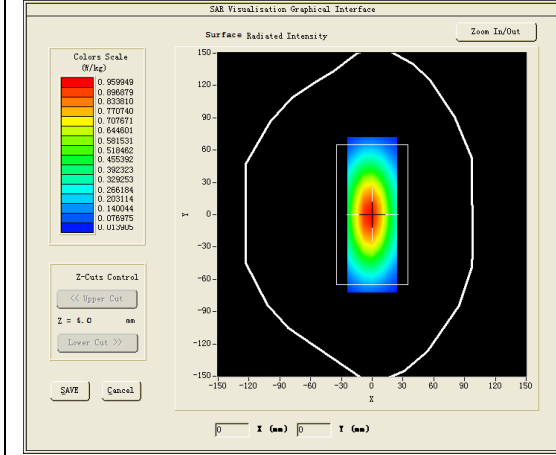
### **B. SAR Measurement Results**

Middle Band SAR (Channel -1):

<b>Frequency (MHz)</b>	835.000000
<b>Relative permittivity (real part)</b>	53.927799
<b>Relative permittivity (imaginary part)</b>	21.281300
<b>Conductivity (S/m)</b>	0.987216
<b>Variation (%)</b>	0.120000

### SURFACE SAR

### VOLUME SAR

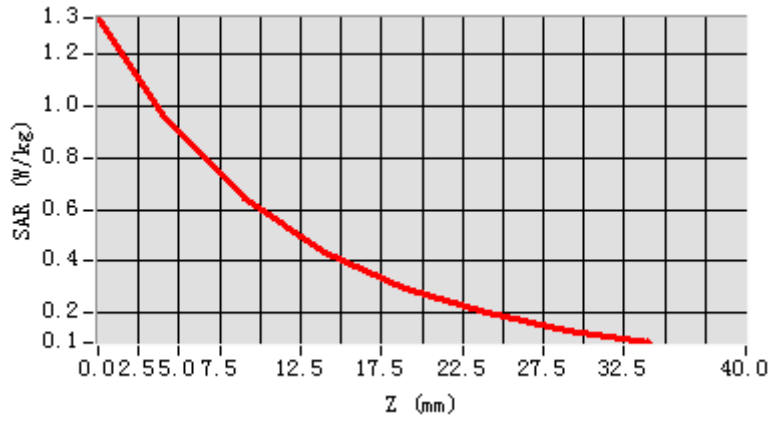


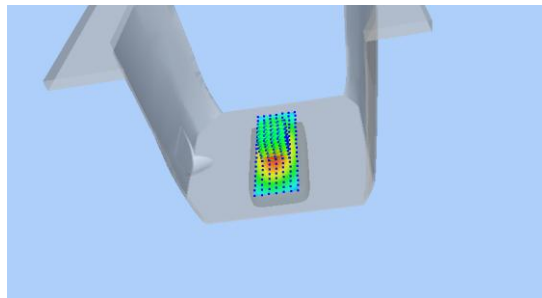
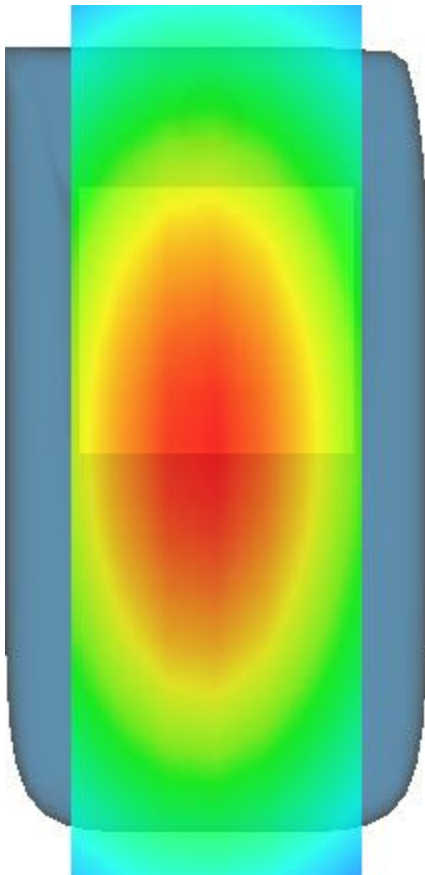
**Maximum location: X=-1.00, Y=0.00**

**SAR Peak: 1.44 W/kg**

<b>SAR 10g (W/Kg)</b>	6.44746
<b>SAR 1g (W/Kg)</b>	10.14583

<b>Z (mm)</b>	<b>0.00</b>	<b>4.00</b>	<b>9.00</b>	<b>14.00</b>	<b>19.00</b>	<b>24.00</b>	<b>29.00</b>
<b>SAR (W/Kg)</b>	<b>1.3418</b>	<b>0.9674</b>	<b>0.6426</b>	<b>0.4358</b>	<b>0.2947</b>	<b>0.1989</b>	<b>0.1326</b>



3D screen shot	Hot spot position
	

## MEASUREMENT 2

### HEAD

Type: Validation measurement (Complete)

Date of measurement: 21/3/2017

Measurement duration: 11 minutes 54 seconds

#### **A. Experimental conditions.**

<b><u>Area Scan</u></b>	<u>dx=8mm dy=8mm</u>
<b><u>ZoomScan</u></b>	<u>5x5x7, dx=8mm dy=8mm</u> <u>dz=5mm, Complete</u>
<b><u>Phantom</u></b>	<u>Validation plane</u>
<b><u>Device Position</u></b>	<u>Dipole</u>
<b><u>Band</u></b>	<u>CW835</u>
<b><u>Channels</u></b>	<u>Middle</u>
<b><u>Signal</u></b>	<u>CW (Crest factor: 1.0)</u>

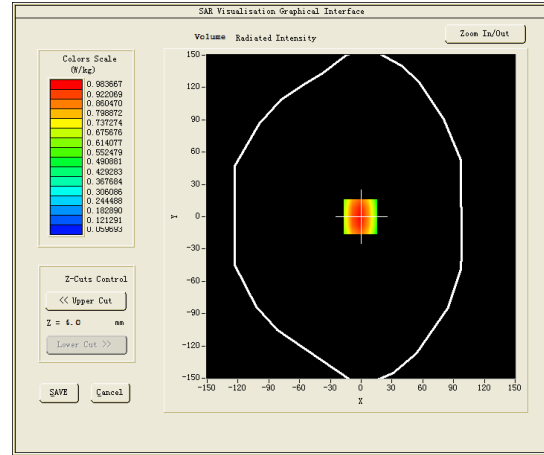
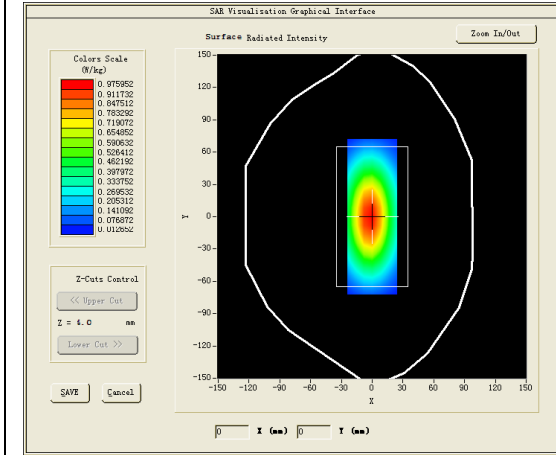
#### **B. SAR Measurement Results**

Middle Band SAR (Channel -1):

<b>Frequency (MHz)</b>	835.000000
<b>Relative permittivity (real part)</b>	40.328999
<b>Relative permittivity (imaginary part)</b>	19.880501
<b>Conductivity (S/m)</b>	0.922234
<b>Variation (%)</b>	-0.070000

### SURFACE SAR

### VOLUME SAR

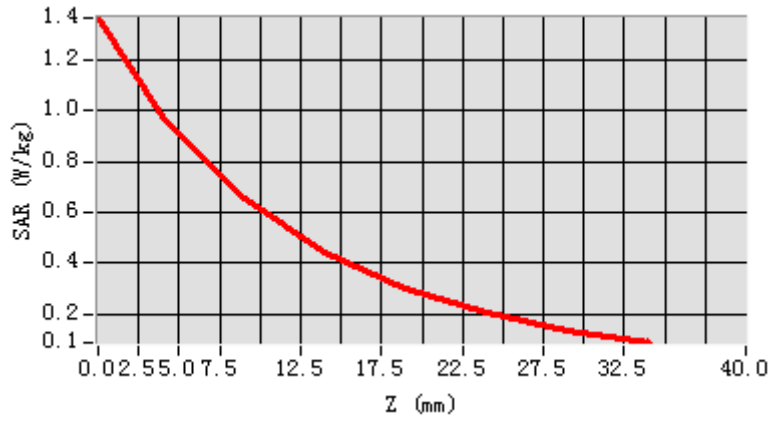


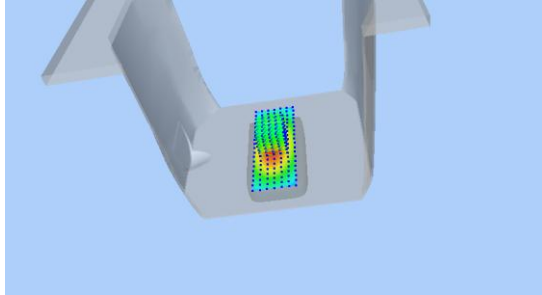
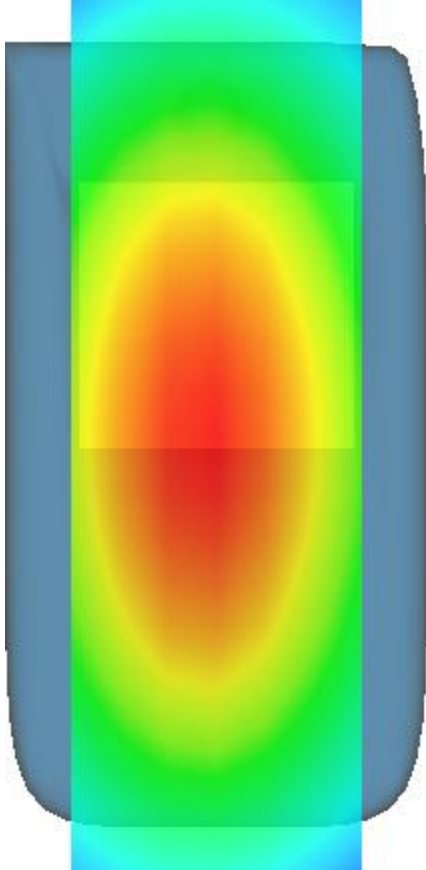
**Maximum location: X=-1.00, Y=0.00**

**SAR Peak: 1.37 W/kg**

<b>SAR 10g (W/Kg)</b>	6.15004
<b>SAR 1g (W/Kg)</b>	9.70049

Z (mm)	0.00	4.00	9.00	14.00	19.00	24.00	29.00
SAR (W/Kg)	1.3669	0.9837	0.6529	0.4412	0.2993	0.2017	0.1343



3D screen shot	Hot spot position
	

## MEASUREMENT 3

### BODY

Type: Validation measurement (Complete)

Date of measurement: 24/3/2017

Measurement duration: 11 minutes 43 seconds

### A. Experimental conditions.

<b><u>Area Scan</u></b>	<u>dx=8mm dy=8mm</u>
<b><u>ZoomScan</u></b>	<u>5x5x7,dx=8mm dy=8mm dz=5mm,Complete</u>
<b><u>Phantom</u></b>	<u>Validation plane</u>
<b><u>Device Position</u></b>	<u>Dipole</u>
<b><u>Band</u></b>	<u>CW1800</u>
<b><u>Channels</u></b>	<u>Middle</u>
<b><u>Signal</u></b>	<u>CW (Crest factor: 1.0)</u>

### B. SAR Measurement Results

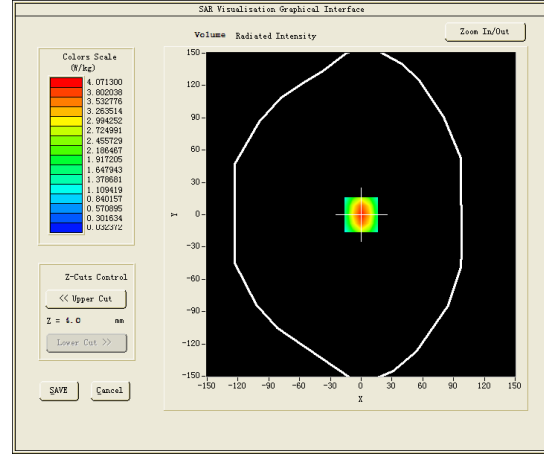
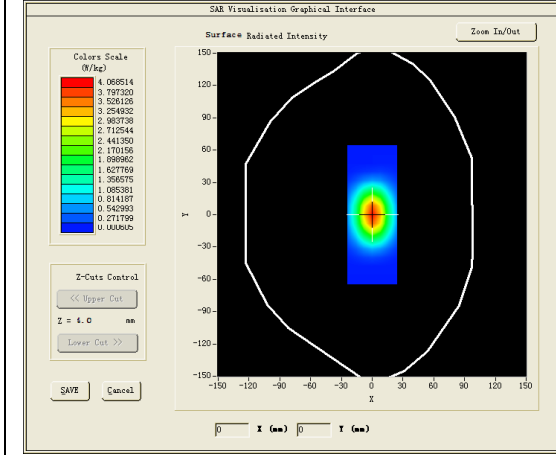
Middle Band SAR (Channel -1):

<b>Frequency (MHz)</b>	1800.000000
<b>Relative permittivity (real part)</b>	53.110200
<b>Relative permittivity (imaginary part)</b>	15.294900
<b>Conductivity (S/m)</b>	1.531490
<b>Variation (%)</b>	-0.080000



### SURFACE SAR

### VOLUME SAR

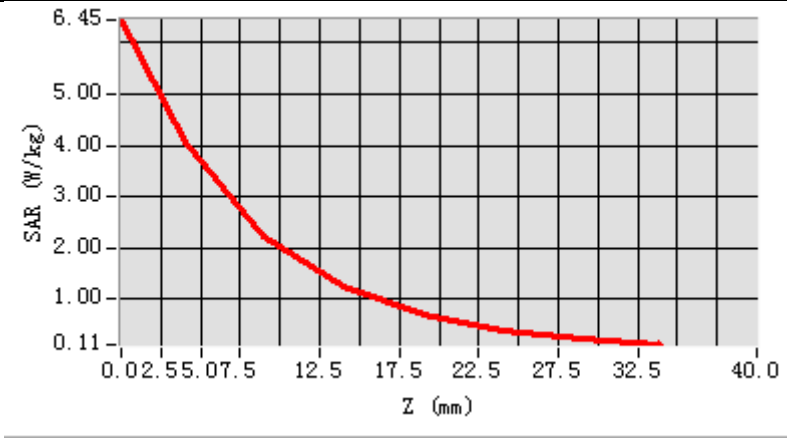


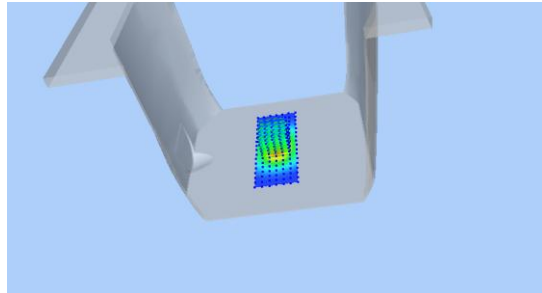
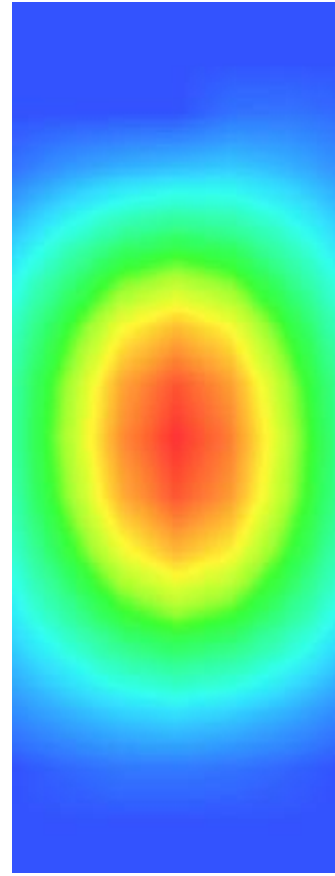
**Maximum location: X=0.00, Y=0.00**

**SAR Peak: 6.86 W/kg**

<b>SAR 10g (W/Kg)</b>	20.94523
<b>SAR 1g (W/Kg)</b>	38.59761

<b>Z (mm)</b>	<b>0.00</b>	<b>4.00</b>	<b>9.00</b>	<b>14.00</b>	<b>19.00</b>	<b>24.00</b>	<b>29.00</b>
<b>SAR (W/Kg)</b>	<b>6.4478</b>	<b>4.0713</b>	<b>2.2310</b>	<b>1.2495</b>	<b>0.7043</b>	<b>0.3895</b>	<b>0.2089</b>



<b>3D screen shot</b>	<b>Hot spot position</b>
	

## MEASUREMENT 4

### HEAD

Type: Validation measurement (Complete)

Date of measurement: 24/3/2017

Measurement duration: 11 minutes 41 seconds

#### **A. Experimental conditions.**

<b><u>Area Scan</u></b>	<u>dx=8mm dy=8mm</u>
<b><u>ZoomScan</u></b>	<u>5x5x7, dx=8mm dy=8mm dz=5mm, Complete</u>
<b><u>Phantom</u></b>	<u>Validation plane</u>
<b><u>Device Position</u></b>	<u>Dipole</u>
<b><u>Band</u></b>	<u>CW1800</u>
<b><u>Channels</u></b>	<u>Middle</u>
<b><u>Signal</u></b>	<u>CW (Crest factor: 1.0)</u>

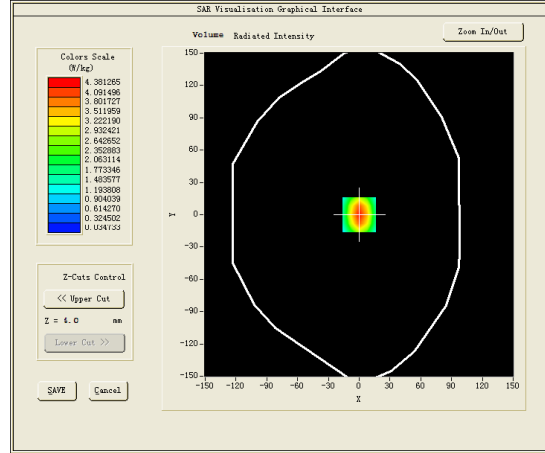
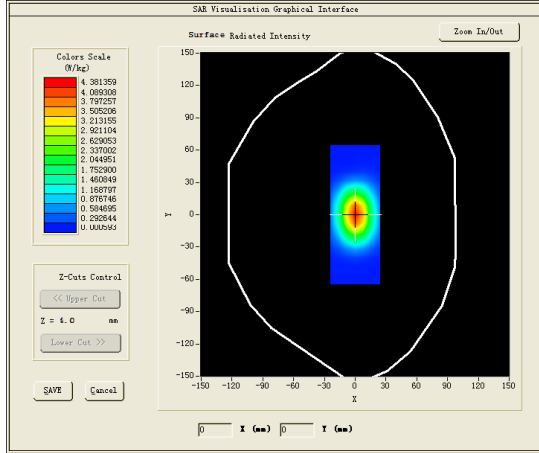
#### **B. SAR Measurement Results**

Middle Band SAR (Channel -1):

<b>Frequency (MHz)</b>	1800.000000
<b>Relative permittivity (real part)</b>	39.814501
<b>Relative permittivity (imaginary part)</b>	14.388300
<b>Conductivity (S/m)</b>	1.435830
<b>Variation (%)</b>	0.610000

### SURFACE SAR

### VOLUME SAR

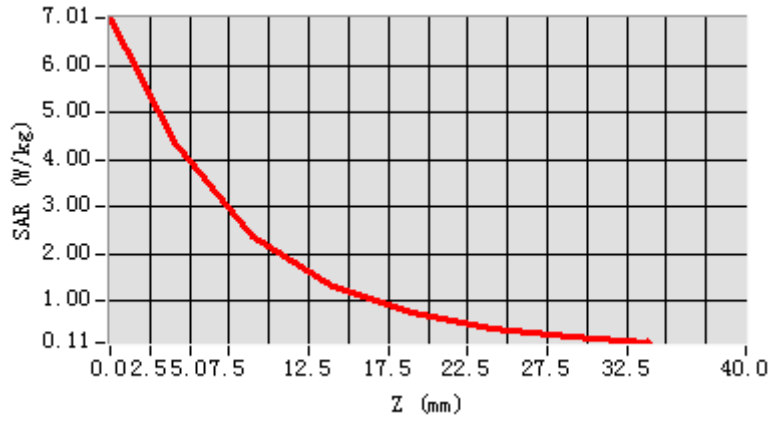


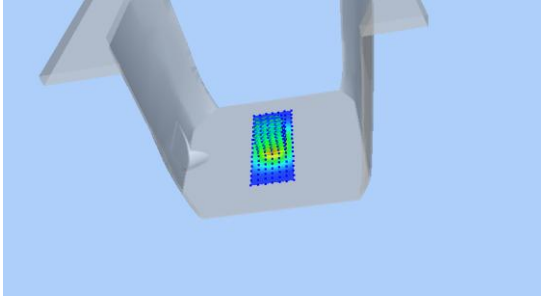
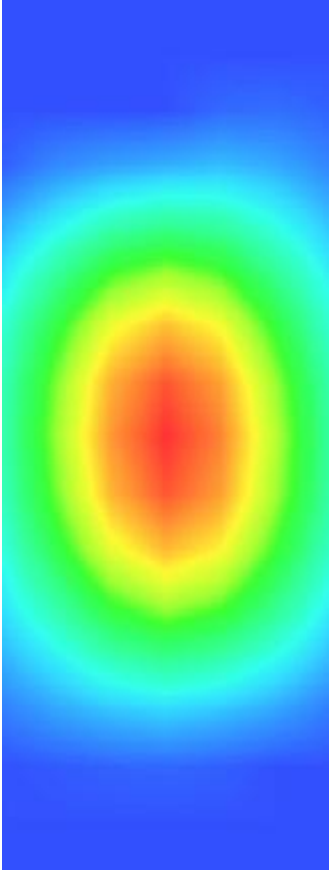
**Maximum location: X=0.00, Y=0.00**

**SAR Peak: 6.95 W/kg**

<b>SAR 10g (W/Kg)</b>	19.84484
<b>SAR 1g (W/Kg)</b>	38.69096

<b>Z (mm)</b>	<b>0.00</b>	<b>4.00</b>	<b>9.00</b>	<b>14.00</b>	<b>19.00</b>	<b>24.00</b>	<b>29.00</b>
<b>SAR (W/Kg)</b>	<b>7.0118</b>	<b>4.3813</b>	<b>2.3674</b>	<b>1.3177</b>	<b>0.7415</b>	<b>0.4093</b>	<b>0.2206</b>



3D screen shot	Hot spot position
	

## MEASUREMENT 5

### BODY

Type: Validation measurement (Complete)

Date of measurement: 22/3/2017

Measurement duration: 10 minutes 57 seconds

### A. Experimental conditions.

<b><u>Area Scan</u></b>	<u>dx=8mm dy=8mm</u>
<b><u>ZoomScan</u></b>	<u>5x5x7,dx=8mm dy=8mm dz=5mm,Complete</u>
<b><u>Phantom</u></b>	<u>Validation plane</u>
<b><u>Device Position</u></b>	<u>Dipole</u>
<b><u>Band</u></b>	<u>CW1900</u>
<b><u>Channels</u></b>	<u>Middle</u>
<b><u>Signal</u></b>	<u>CW (Crest factor: 1.0)</u>

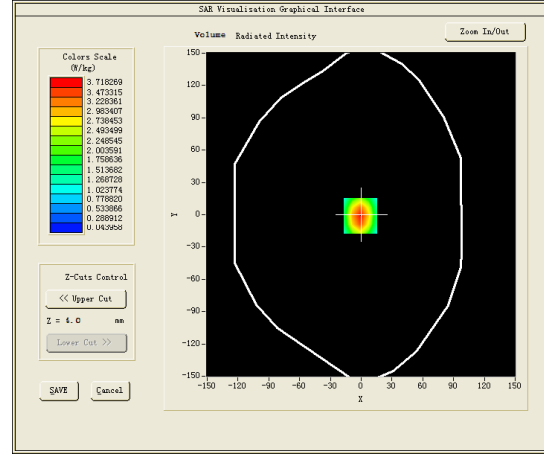
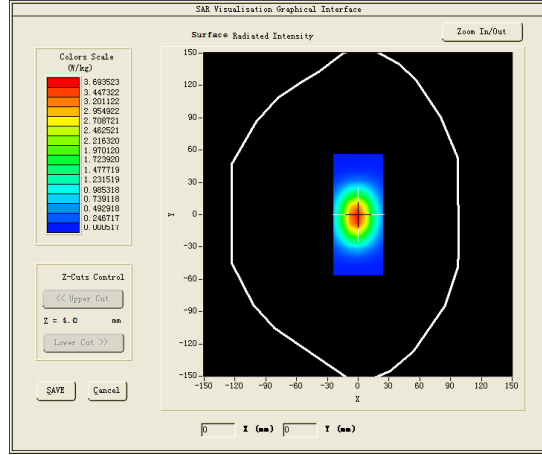
### B. SAR Measurement Results

Middle Band SAR (Channel -1):

<b>Frequency (MHz)</b>	1900.000000
<b>Relative permittivity (real part)</b>	53.365299
<b>Relative permittivity (imaginary part)</b>	14.757600
<b>Conductivity (S/m)</b>	1.557747
<b>Variation (%)</b>	-0.450000

### SURFACE SAR

### VOLUME SAR

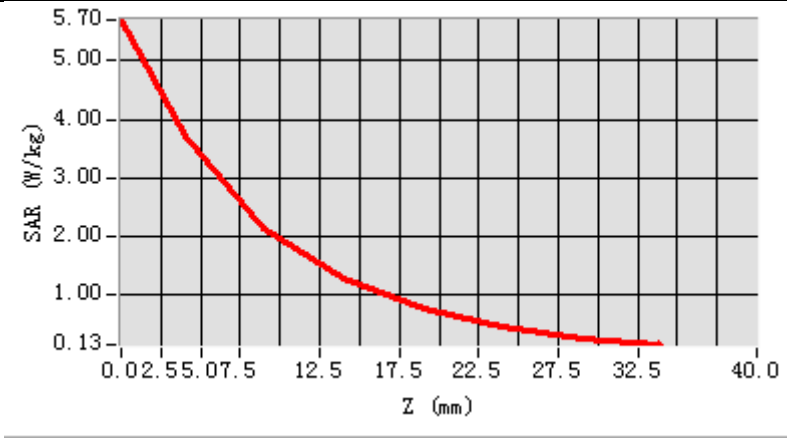


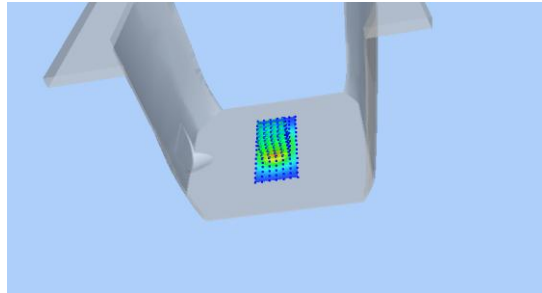
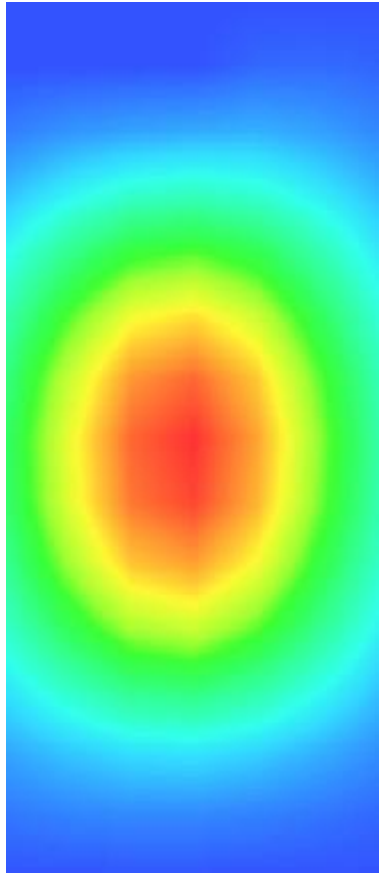
**Maximum location: X=-1.00, Y=-1.00**

**SAR Peak: 6.26 W/kg**

<b>SAR 10g (W/Kg)</b>	20.93533
<b>SAR 1g (W/Kg)</b>	39.32904

<b>Z (mm)</b>	<b>0.00</b>	<b>4.00</b>	<b>9.00</b>	<b>14.00</b>	<b>19.00</b>	<b>24.00</b>	<b>29.00</b>
<b>SAR (W/Kg)</b>	<b>5.7034</b>	<b>3.7183</b>	<b>2.1347</b>	<b>1.2560</b>	<b>0.7338</b>	<b>0.4260</b>	<b>0.2429</b>



<b>3D screen shot</b>	<b>Hot spot position</b>
	



## MEASUREMENT 6

### HEAD

Type: Validation measurement (Complete)

Date of measurement: 22/3/2017

Measurement duration: 11 minutes 6 seconds

#### **A. Experimental conditions.**

<b><u>Area Scan</u></b>	<u>dx=8mm dy=8mm</u>
<b><u>ZoomScan</u></b>	<u>5x5x7,dx=8mm dy=8mm dz=5mm,Complete</u>
<b><u>Phantom</u></b>	<u>Validation plane</u>
<b><u>Device Position</u></b>	<u>Dipole</u>
<b><u>Band</u></b>	<u>CW1900</u>
<b><u>Channels</u></b>	<u>Middle</u>
<b><u>Signal</u></b>	<u>CW (Crest factor: 1.0)</u>

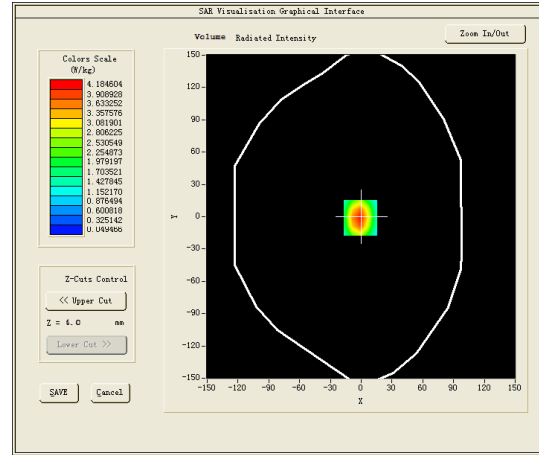
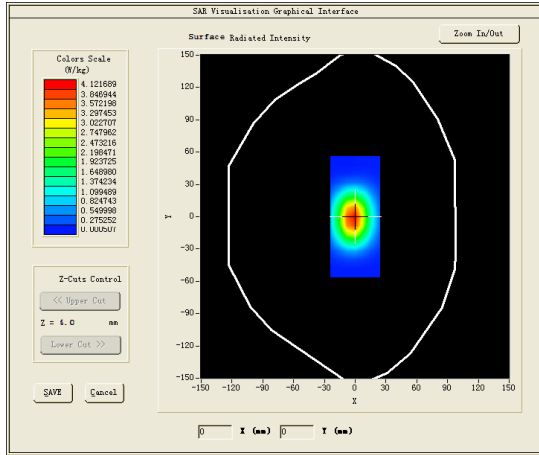
#### **B. SAR Measurement Results**

Middle Band SAR (Channel -1):

<b>Frequency (MHz)</b>	1900.000000
<b>Relative permittivity (real part)</b>	39.976398
<b>Relative permittivity (imaginary part)</b>	13.386300
<b>Conductivity (S/m)</b>	1.412998
<b>Variation (%)</b>	-0.040000

### SURFACE SAR

### VOLUME SAR

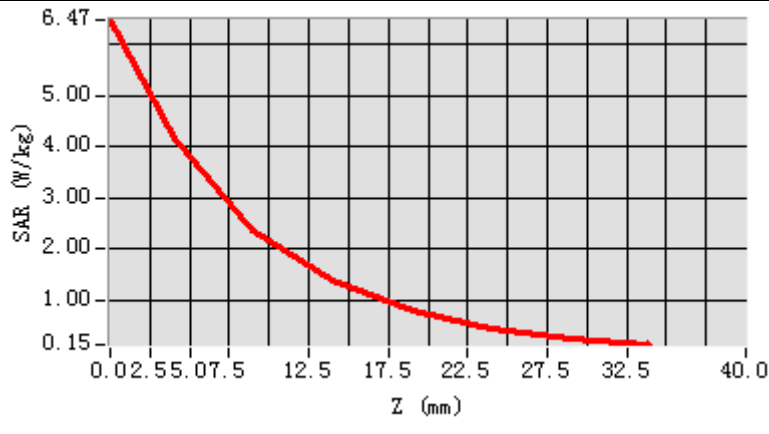


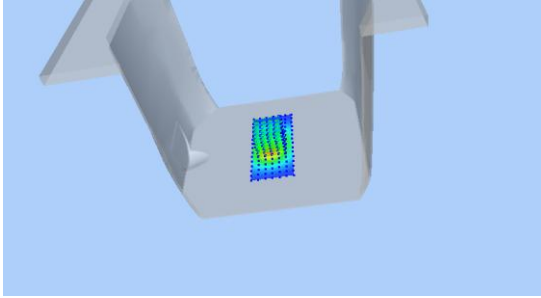
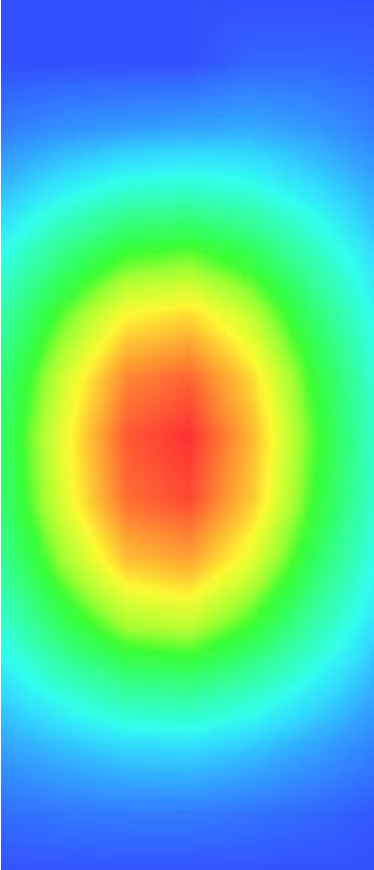
**Maximum location: X=-1.00, Y=-1.00**

**SAR Peak: 6.48 W/kg**

<b>SAR 10g (W/Kg)</b>	21.07104
<b>SAR 1g (W/Kg)</b>	39.97625

Z (mm)	0.00	4.00	9.00	14.00	19.00	24.00	29.00
SAR (W/Kg)	6.4693	4.1846	2.3780	1.3892	0.8084	0.4680	0.2662



3D screen shot	Hot spot position
	

## MEASUREMENT 7

### BODY

Type: Validation measurement (Complete)

Date of measurement: 25/3/2017

Measurement duration: 9 minutes 46 seconds

### A. Experimental conditions.

<b><u>Area Scan</u></b>	<u>dx=8mm dy=8mm</u>
<b><u>ZoomScan</u></b>	<u>5x5x7,dx=8mm dy=8mm dz=5mm,Complete</u>
<b><u>Phantom</u></b>	<u>Validation plane</u>
<b><u>Device Position</u></b>	<u>Dipole</u>
<b><u>Band</u></b>	<u>CW2450</u>
<b><u>Channels</u></b>	<u>Middle</u>
<b><u>Signal</u></b>	<u>CW (Crest factor: 1.0)</u>

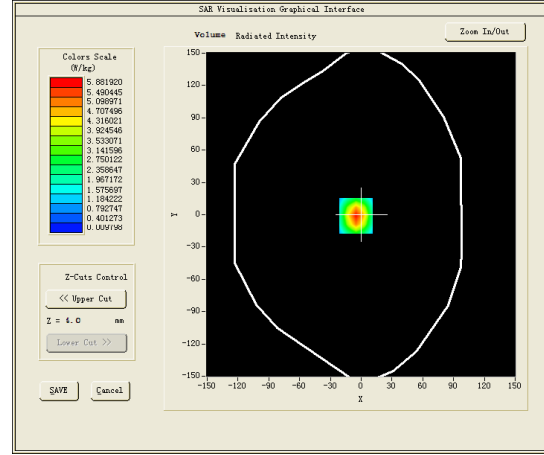
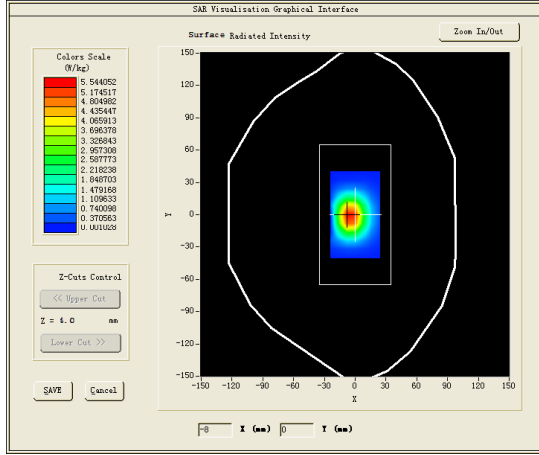
### B. SAR Measurement Results

Middle Band SAR (Channel -1):

<b>Frequency (MHz)</b>	2450.000000
<b>Relative permittivity (real part)</b>	52.735699
<b>Relative permittivity (imaginary part)</b>	14.017300
<b>Conductivity (S/m)</b>	1.907910
<b>Variation (%)</b>	0.390000

### SURFACE SAR

### VOLUME SAR

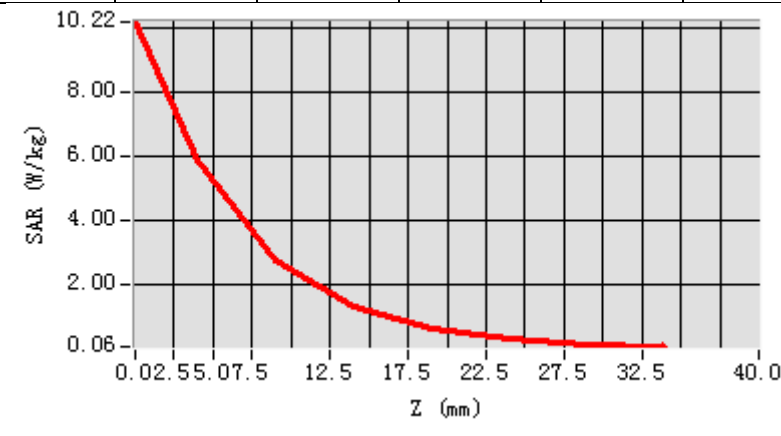


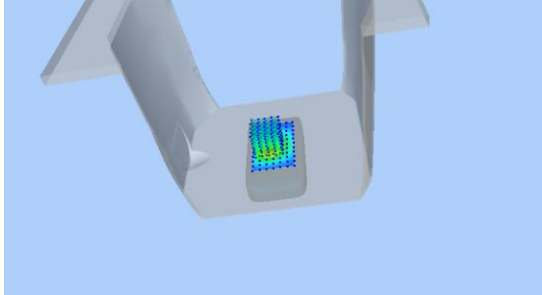
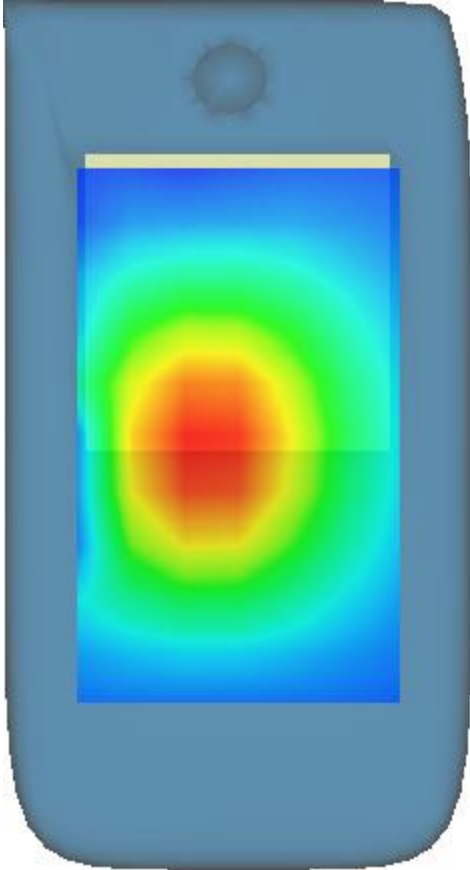
**Maximum location: X=-5.00, Y=-1.00**

**SAR Peak: 10.96 W/kg**

<b>SAR 10g (W/Kg)</b>	23.33453
<b>SAR 1g (W/Kg)</b>	54.33343

Z (mm)	0.00	4.00	9.00	14.00	19.00	24.00	29.00
SAR (W/Kg)	10.2188	5.8819	2.7478	1.3151	0.6266	0.2969	0.1341



3D screen shot	Hot spot position
	

## MEASUREMENT 8

### HEAD

Type: Validation measurement (Complete)

Date of measurement: 25/3/2017

Measurement duration: 9 minutes 46 seconds

#### A. Experimental conditions.

<b><u>Area Scan</u></b>	<u>dx=8mm dy=8mm</u>
<b><u>ZoomScan</u></b>	<u>5x5x7,dx=8mm dy=8mm</u> <u>dz=5mm,Complete</u>
<b><u>Phantom</u></b>	<u>Validation plane</u>
<b><u>Device Position</u></b>	<u>Dipole</u>
<b><u>Band</u></b>	<u>CW2450</u>
<b><u>Channels</u></b>	<u>Middle</u>
<b><u>Signal</u></b>	<u>CW (Crest factor: 1.0)</u>

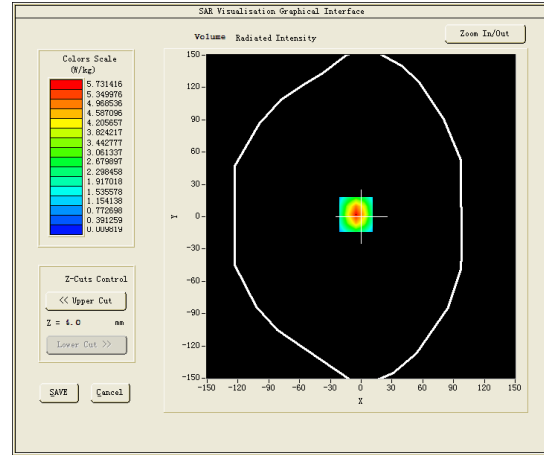
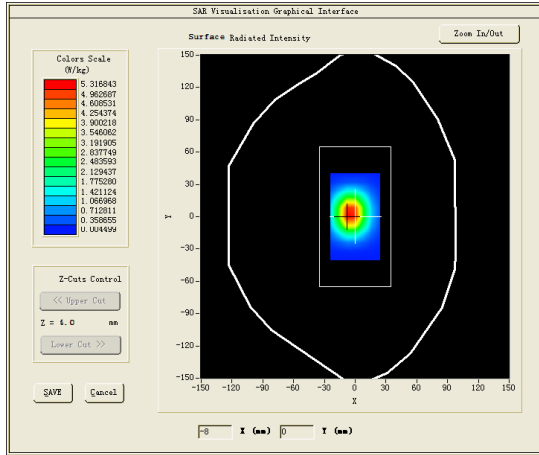
#### B. SAR Measurement Results

Middle Band SAR (Channel -1):

<b>Frequency (MHz)</b>	2450.000000
<b>Relative permittivity (real part)</b>	39.235699
<b>Relative permittivity (imaginary part)</b>	12.917300
<b>Conductivity (S/m)</b>	1.758188
<b>Variation (%)</b>	2.820000

### SURFACE SAR

### VOLUME SAR



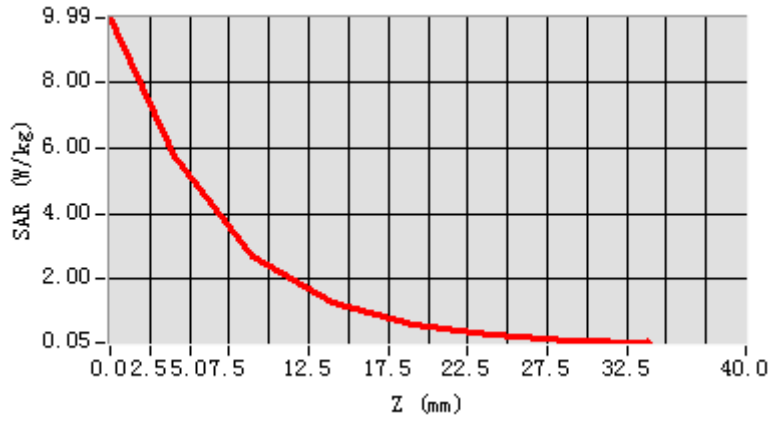
**Maximum location: X=-5.00, Y=2.00**

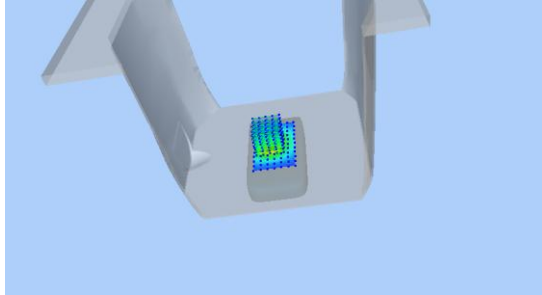
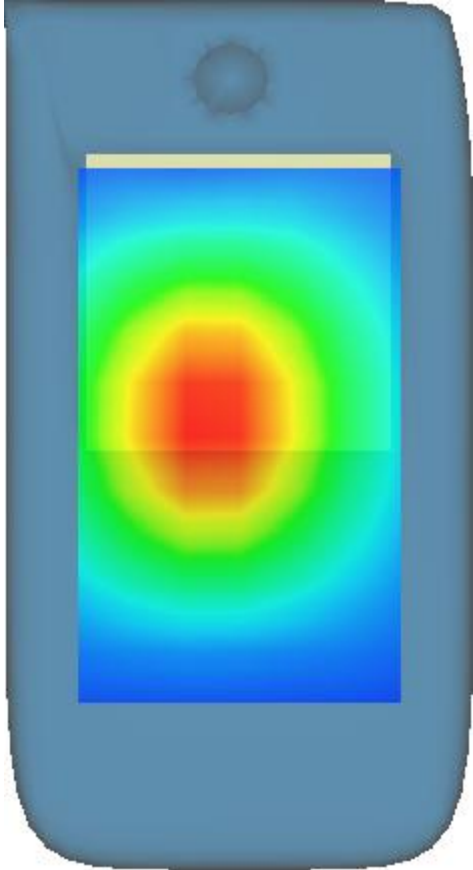
**SAR Peak: 9.92 W/kg**

<b>SAR 10g (W/Kg)</b>	24.52895
<b>SAR 1g (W/Kg)</b>	53.93069



Z (mm)	0.00	4.00	9.00	14.00	19.00	24.00	29.00
SAR (W/Kg)	9.9915	5.7314	2.6626	1.2722	0.6047	0.2852	0.1274



3D screen shot	Hot spot position
	

## MEASUREMENT 9

### BODY

Type: Validation measurement (Complete)

Date of measurement: 24/3/2017

Measurement duration: 10 minutes 13 seconds

### A. Experimental conditions.

<b><u>Area Scan</u></b>	<u>dx=8mm dy=8mm</u>
<b><u>ZoomScan</u></b>	<u>5x5x7,dx=8mm dy=8mm dz=5mm,Complete</u>
<b><u>Phantom</u></b>	<u>Validation plane</u>
<b><u>Device Position</u></b>	<u>Dipole</u>
<b><u>Band</u></b>	<u>CW2600</u>
<b><u>Channels</u></b>	<u>Middle</u>
<b><u>Signal</u></b>	<u>CW (Crest factor: 1.0)</u>

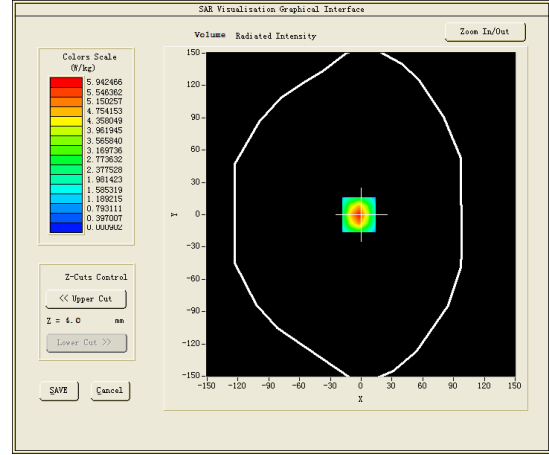
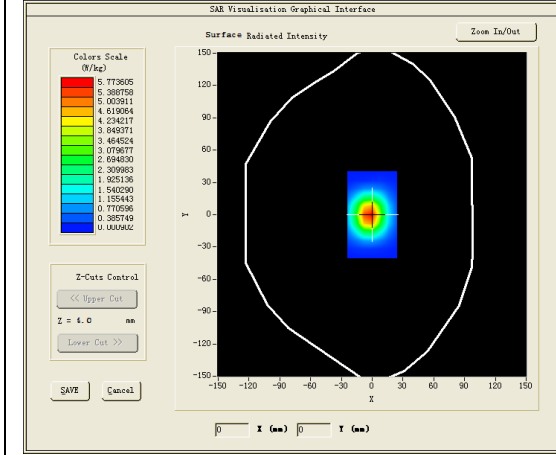
### B. SAR Measurement Results

Middle Band SAR (Channel -1):

<b>Frequency (MHz)</b>	2600.000000
<b>Relative permittivity (real part)</b>	52.007900
<b>Relative permittivity (imaginary part)</b>	14.458500
<b>Conductivity (S/m)</b>	2.088450
<b>Variation (%)</b>	-0.220000

### SURFACE SAR

### VOLUME SAR

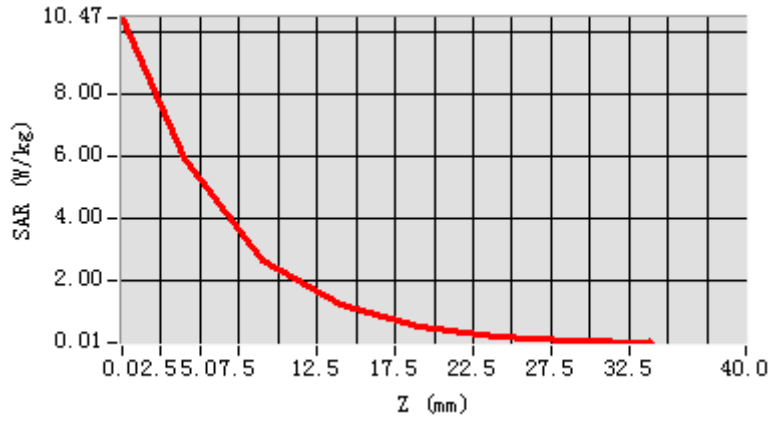


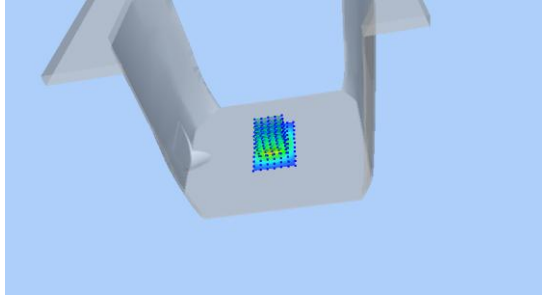
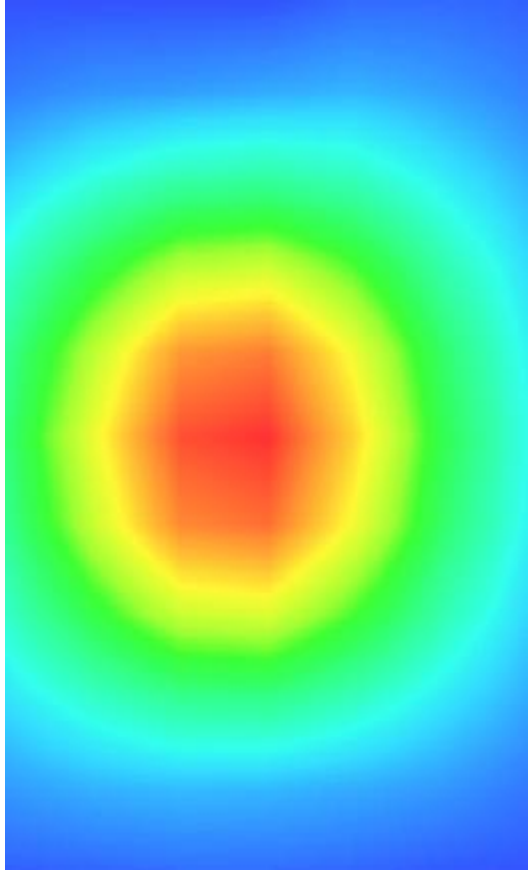
**Maximum location: X=-2.00, Y=0.00**

**SAR Peak: 10.74 W/kg**

<b>SAR 10g (W/Kg)</b>	25.599674
<b>SAR 1g (W/Kg)</b>	57.864350

Z (mm)	0.00	4.00	9.00	14.00	19.00	24.00	29.00
SAR (W/Kg)	10.4745	5.9425	2.6827	1.2126	0.5266	0.2069	0.0714



3D screen shot	Hot spot position
	

## MEASUREMENT 10

### HEAD

Type: Validation measurement (Complete)

Date of measurement: 24/3/2017

Measurement duration: 10 minutes 12 seconds

### A. Experimental conditions.

<b><u>Area Scan</u></b>	<u>dx=8mm dy=8mm</u>
<b><u>ZoomScan</u></b>	<u>5x5x7, dx=8mm dy=8mm dz=5mm, Complete</u>
<b><u>Phantom</u></b>	<u>Validation plane</u>
<b><u>Device Position</u></b>	<u>Dipole</u>
<b><u>Band</u></b>	<u>CW2600</u>
<b><u>Channels</u></b>	<u>Middle</u>
<b><u>Signal</u></b>	<u>CW (Crest factor: 1.0)</u>

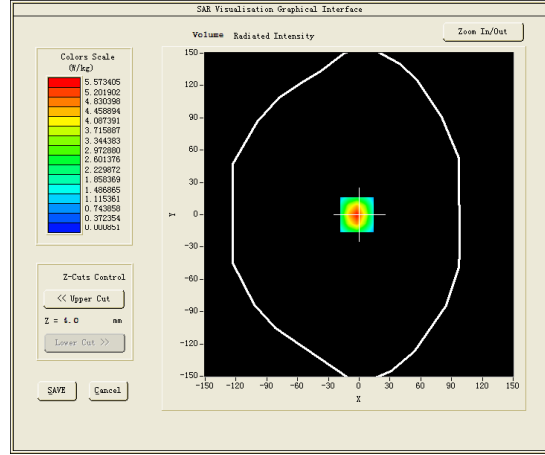
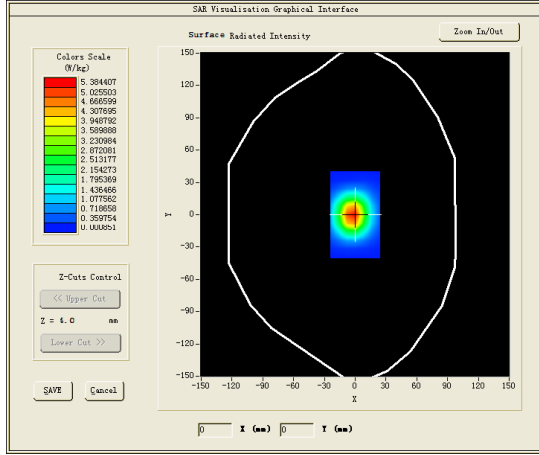
### B. SAR Measurement Results

Middle Band SAR (Channel -1):

<b>Frequency (MHz)</b>	2600.000000
<b>Relative permittivity (real part)</b>	38.979599
<b>Relative permittivity (imaginary part)</b>	13.989700
<b>Conductivity (S/m)</b>	2.020734
<b>Variation (%)</b>	0.250000

### SURFACE SAR

### VOLUME SAR

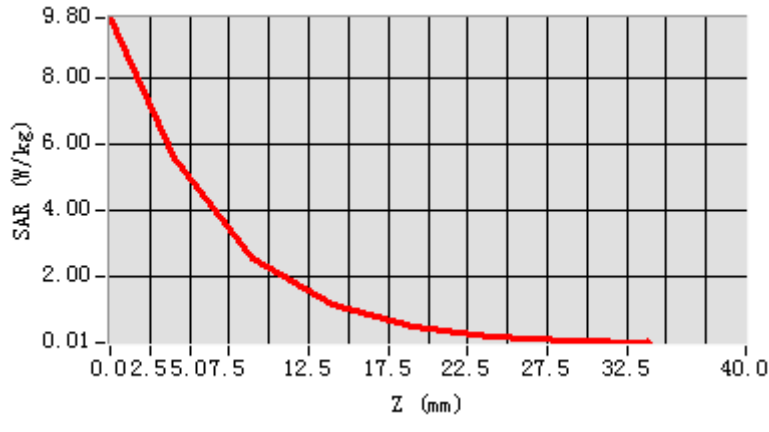


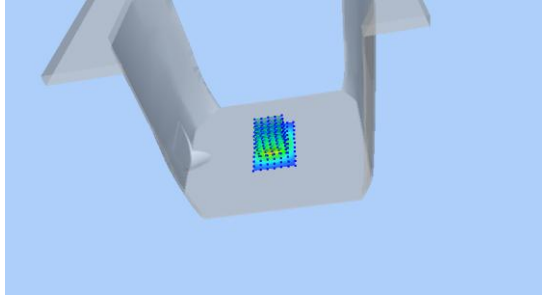
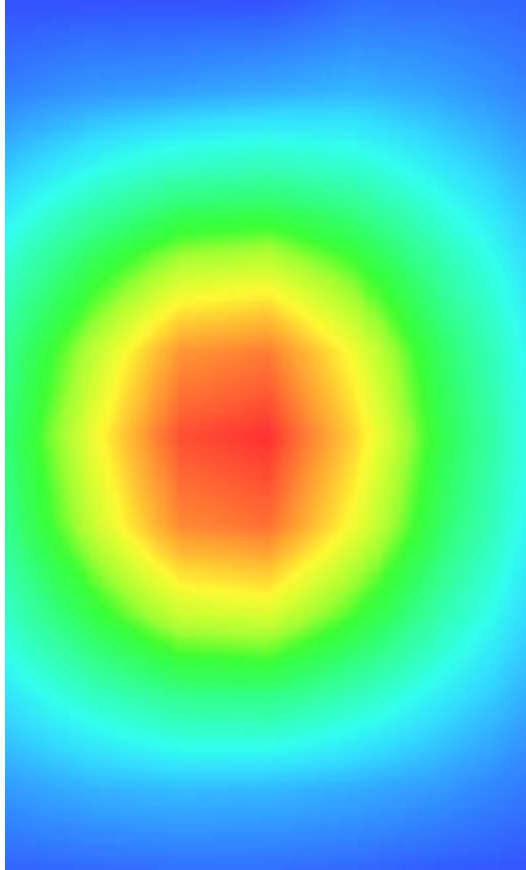
**Maximum location: X=-2.00, Y=0.00**

**SAR Peak: 9.73 W/kg**

<b>SAR 10g (W/Kg)</b>	23.42963
<b>SAR 1g (W/Kg)</b>	53.18259

Z (mm)	0.00	4.00	9.00	14.00	19.00	24.00	29.00
SAR (W/Kg)	9.8044	5.5734	2.5229	1.1430	0.4950	0.1964	0.0689



3D screen shot	Hot spot position
	

## MEASUREMENT 11

HEAD

Type: Validation measurement (Complete)

Date of measurement: 27/3/2017

Measurement duration: 11 minutes 54 seconds

### **A. Experimental conditions.**

<b><u>Area Scan</u></b>	<u>dx=10mm dy=10mm</u>
<b><u>ZoomScan</u></b>	<u>8x8x7,dx=4mm dy=4mm dz=2mm,Complete</u>
<b><u>Phantom</u></b>	<u>Validation plane</u>
<b><u>Device Position</u></b>	<u>Dipole</u>
<b><u>Band</u></b>	<u>CW5200</u>
<b><u>Channels</u></b>	<u>Middle</u>
<b><u>Signal</u></b>	<u>CW (Duty cycle:1:1)</u>

### **B. SAR Measurement Results**

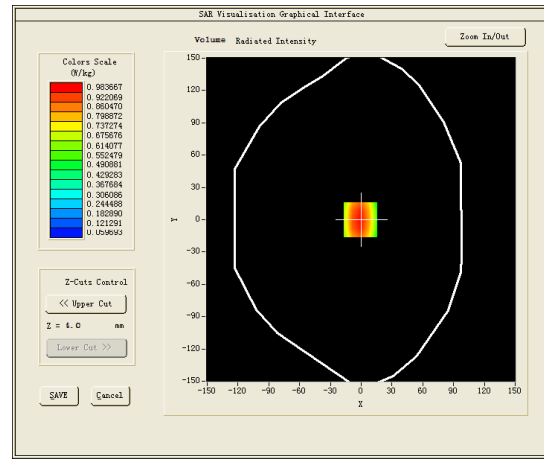
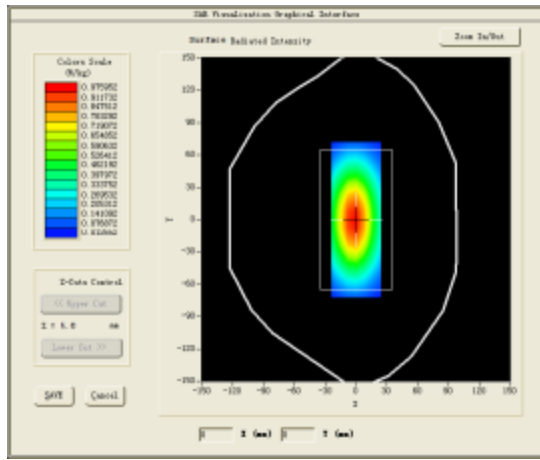
Middle Band SAR (Channel -1):

<b>Frequency (MHz)</b>	5200.000000
<b>Relative permittivity (real part)</b>	35.553182
<b>Relative permittivity (imaginary part)</b>	16.497414
<b>Conductivity (S/m)</b>	4.773841
<b>Variation (%)</b>	-0.070000



### SURFACE SAR

### VOLUME SAR

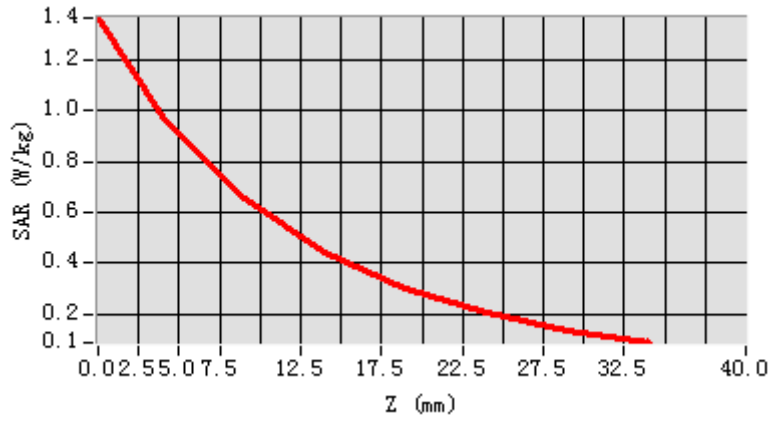


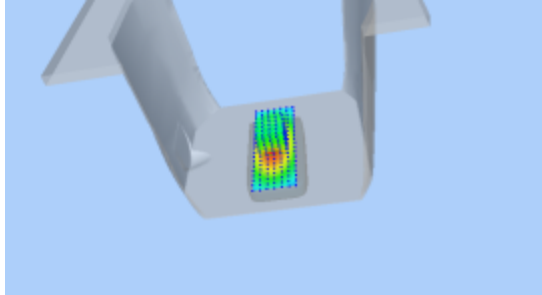
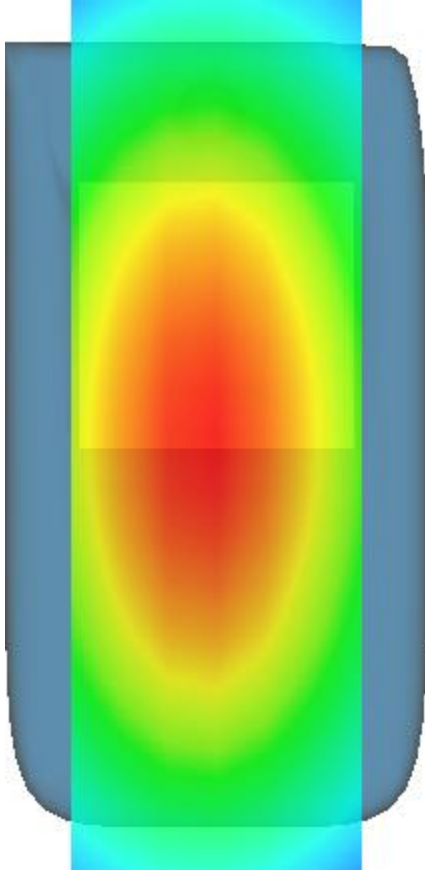
**Maximum location: X=-1.00, Y=0.00**

**SAR Peak: 1.37 W/kg**

<b>SAR 10g (W/Kg)</b>	58.69038
<b>SAR 1g (W/Kg)</b>	166.69083

<b>Z (mm)</b>	<b>0.00</b>	<b>4.00</b>	<b>9.00</b>	<b>14.00</b>	<b>19.00</b>	<b>24.00</b>	<b>29.00</b>
<b>SAR (W/Kg)</b>	<b>1.3669</b>	<b>0.9837</b>	<b>0.6529</b>	<b>0.4412</b>	<b>0.2993</b>	<b>0.2017</b>	<b>0.1343</b>



3D screen shot	Hot spot position
	

## MEASUREMENT 12

BODY

Type: Validation measurement (Complete)

Date of measurement: 27/3/2017

Measurement duration: 11 minutes 32 seconds

### **A. Experimental conditions.**

<b><u>Area Scan</u></b>	<u>dx=10mm dy=10mm</u>
<b><u>ZoomScan</u></b>	<u>8x8x7,dx=4mm dy=4mm dz=2mm,Complete</u>
<b><u>Phantom</u></b>	<u>Validation plane</u>
<b><u>Device Position</u></b>	<u>Dipole</u>
<b><u>Band</u></b>	<u>CW5200</u>
<b><u>Channels</u></b>	<u>Middle</u>
<b><u>Signal</u></b>	<u>CW (Duty cycle:1:1)</u>

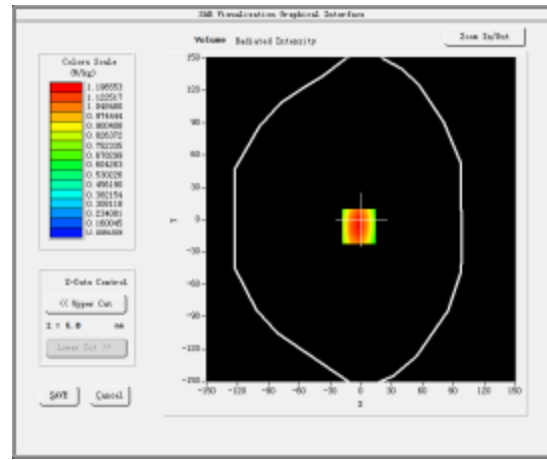
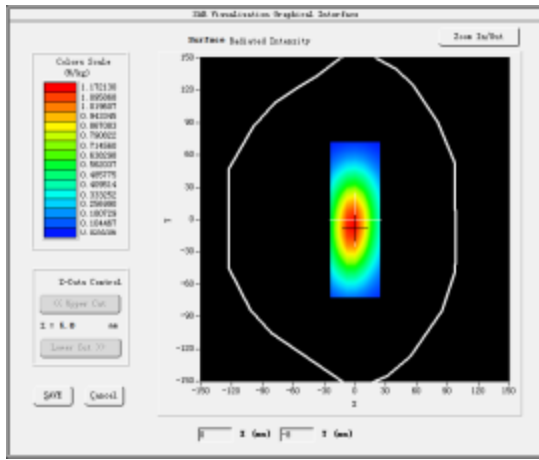
### **B. SAR Measurement Results**

Middle Band SAR (Channel -1):

<b>Frequency (MHz)</b>	5200.000000
<b>Relative permittivity (real part)</b>	50.422599
<b>Relative permittivity (imaginary part)</b>	18.202492
<b>Conductivity (S/m)</b>	5.26371
<b>Variation (%)</b>	0.270000

**SURFACE SAR**

**VOLUME SAR**

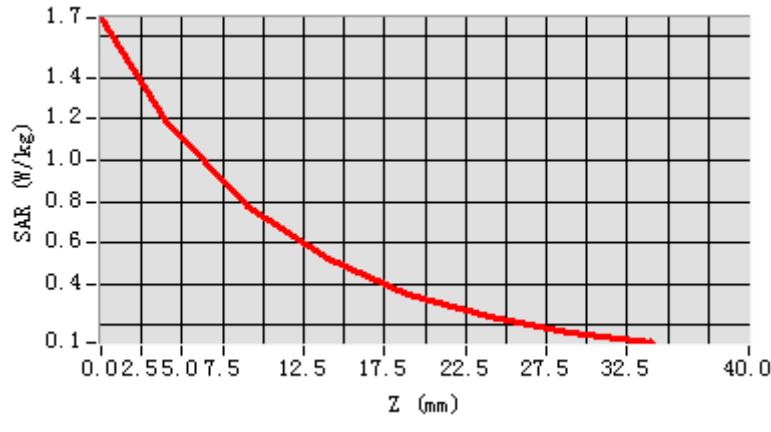


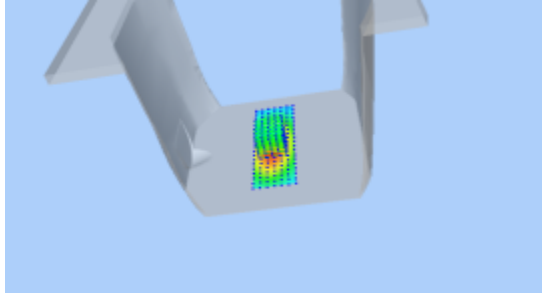
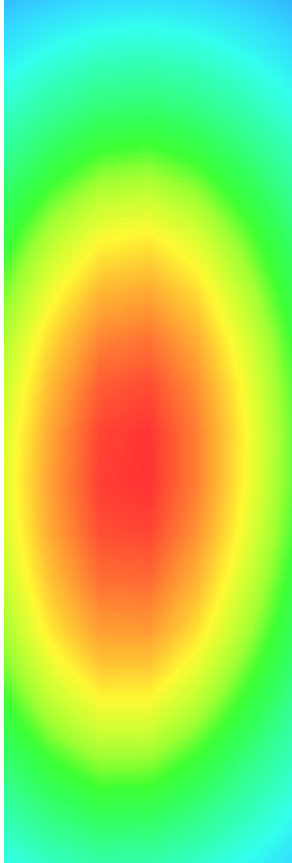
**Maximum location: X=-2.00, Y=-6.00**

**SAR Peak: 1.69 W/kg**

<b>SAR 10g (W/Kg)</b>	58.64065
<b>SAR 1g (W/Kg)</b>	164.68941

<b>Z (mm)</b>	<b>0.00</b>	<b>4.00</b>	<b>9.00</b>	<b>14.00</b>	<b>19.00</b>	<b>24.00</b>	<b>29.00</b>
<b>SAR (W/Kg)</b>	<b>1.6911</b>	<b>1.1966</b>	<b>0.7784</b>	<b>0.5196</b>	<b>0.3518</b>	<b>0.2403</b>	<b>0.1660</b>



3D screen shot	Hot spot position
	

## MEASUREMENT 13

HEAD

Type: Validation measurement (Complete)

Date of measurement: 27/3/2017

Measurement duration: 11 minutes 36 seconds

### **A. Experimental conditions.**

<b><u>Area Scan</u></b>	<u>dx=10mm dy=10mm</u>
<b><u>ZoomScan</u></b>	<u>8x8x7,dx=4mm dy=4mm dz=2mm,Complete</u>
<b><u>Phantom</u></b>	<u>Validation plane</u>
<b><u>Device Position</u></b>	<u>Dipole</u>
<b><u>Band</u></b>	<u>CW5400</u>
<b><u>Channels</u></b>	<u>Middle</u>
<b><u>Signal</u></b>	<u>CW (Duty cycle:1:1)</u>

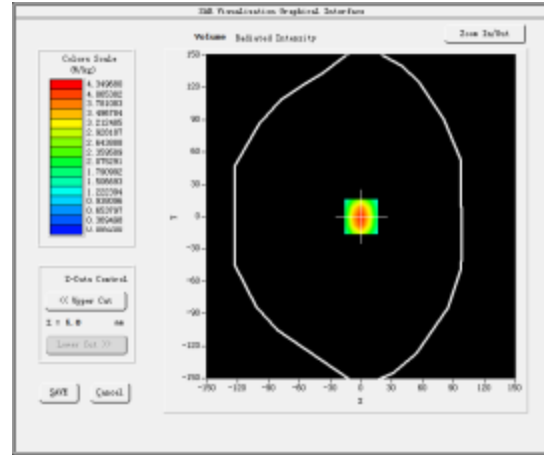
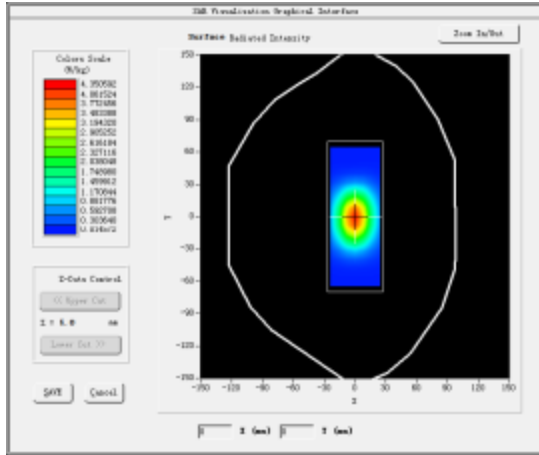
### **B. SAR Measurement Results**

Middle Band SAR (Channel -1):

<b>Frequency (MHz)</b>	5400.000000
<b>Relative permittivity (real part)</b>	35.343199
<b>Relative permittivity (imaginary part)</b>	16.591080
<b>Conductivity (S/m)</b>	4.881334
<b>Variation (%)</b>	-0.620000

### SURFACE SAR

### VOLUME SAR

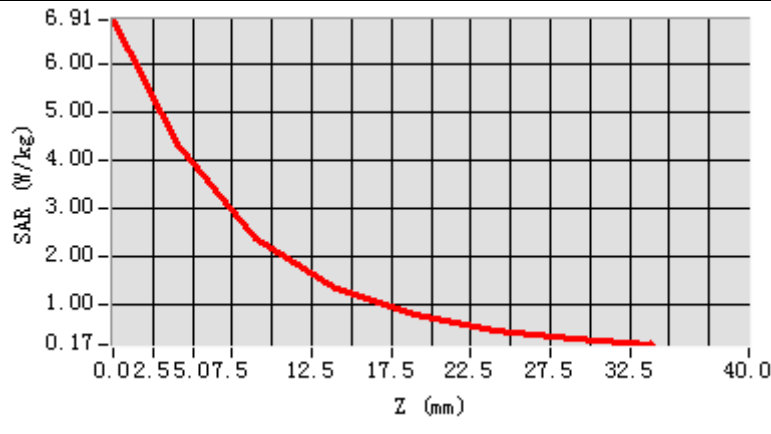


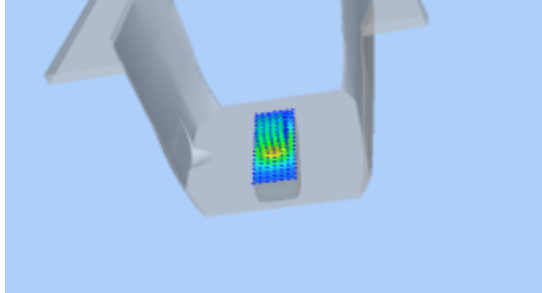
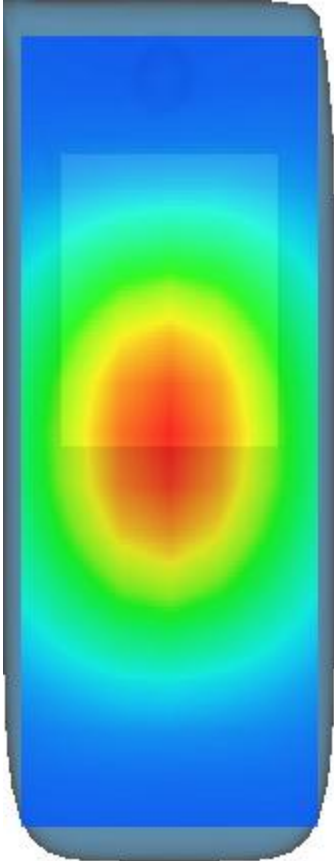
**Maximum location: X=0.00, Y=0.00**

**SAR Peak: 6.87 W/kg**

<b>SAR 10g (W/Kg)</b>	59.62046
<b>SAR 1g (W/Kg)</b>	168.56228

<b>Z (mm)</b>	<b>0.00</b>	<b>4.00</b>	<b>9.00</b>	<b>14.00</b>	<b>19.00</b>	<b>24.00</b>	<b>29.00</b>
<b>SAR (W/Kg)</b>	<b>6.9135</b>	<b>4.3497</b>	<b>2.3796</b>	<b>1.3511</b>	<b>0.7818</b>	<b>0.4574</b>	<b>0.2733</b>



3D screen shot	Hot spot position
	



## MEASUREMENT 14

BODY

Type: Validation measurement (Complete)

Date of measurement: 27/3/2017

Measurement duration: 10 minutes 36 seconds

### **A. Experimental conditions.**

<b><u>Area Scan</u></b>	<u>dx=10mm dy=10mm</u>
<b><u>ZoomScan</u></b>	<u>8x8x7,dx=4mm dy=4mm dz=2mm,Complete</u>
<b><u>Phantom</u></b>	<u>Validation plane</u>
<b><u>Device Position</u></b>	<u>Dipole</u>
<b><u>Band</u></b>	<u>CW5400</u>
<b><u>Channels</u></b>	<u>Middle</u>
<b><u>Signal</u></b>	<u>CW (Duty cycle:1:1)</u>

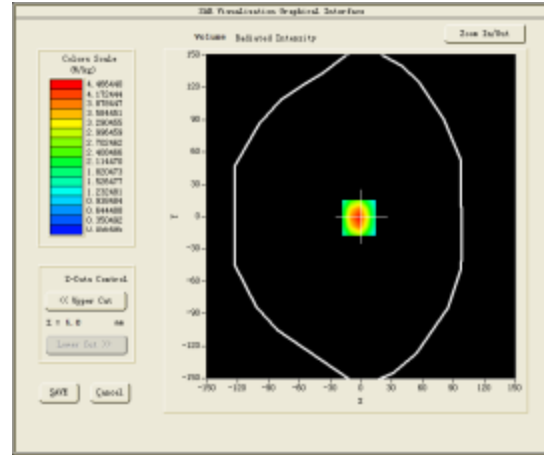
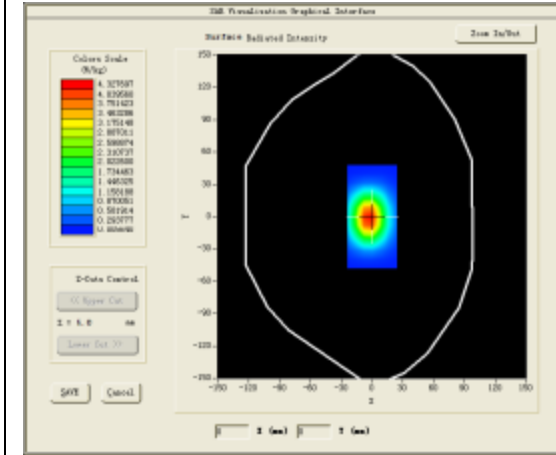
### **B. SAR Measurement Results**

Middle Band SAR (Channel -1):

<b>Frequency (MHz)</b>	5400.000000
<b>Relative permittivity (real part)</b>	47.944300
<b>Relative permittivity (imaginary part)</b>	18.167566
<b>Conductivity (S/m)</b>	5.353919
<b>Variation (%)</b>	-0.350000

### SURFACE SAR

### VOLUME SAR

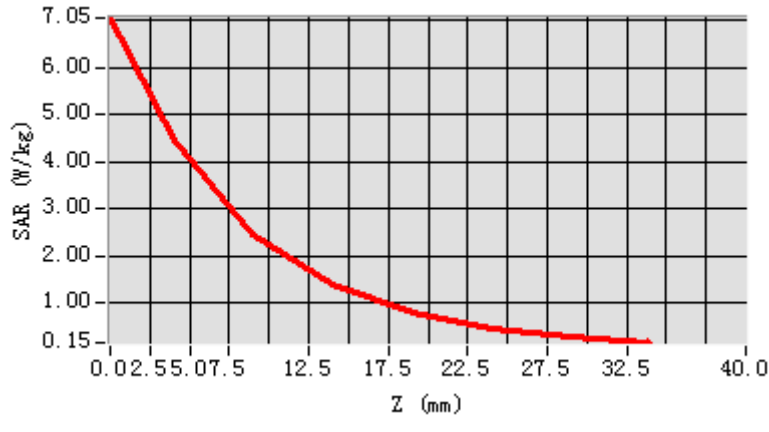


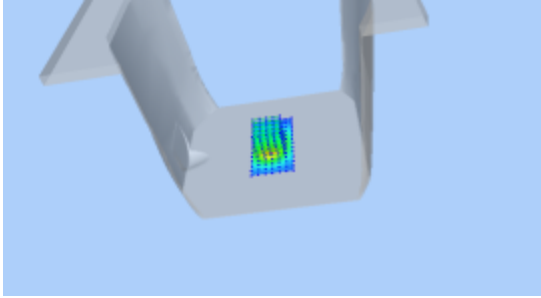
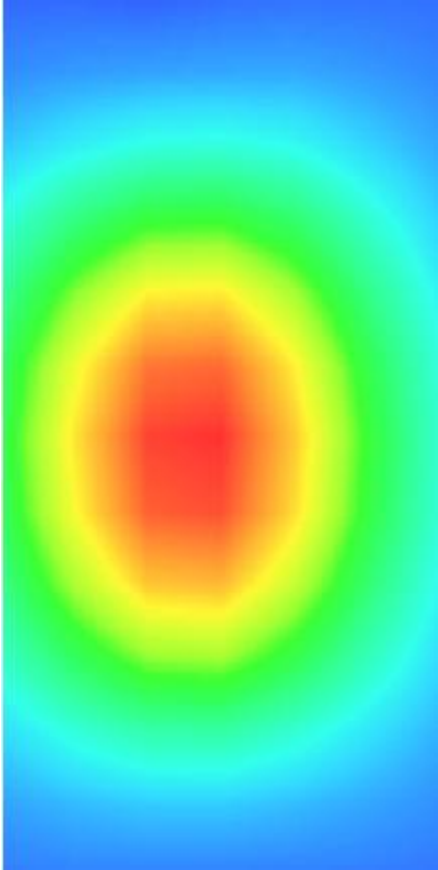
**Maximum location: X=-2.00, Y=-1.00**

**SAR Peak: 7.04 W/kg**

<b>SAR 10g (W/Kg)</b>	58.68132
<b>SAR 1g (W/Kg)</b>	166.54029

<b>Z (mm)</b>	<b>0.00</b>	<b>4.00</b>	<b>9.00</b>	<b>14.00</b>	<b>19.00</b>	<b>24.00</b>	<b>29.00</b>
<b>SAR (W/Kg)</b>	<b>7.0497</b>	<b>4.4664</b>	<b>2.4603</b>	<b>1.3992</b>	<b>0.7963</b>	<b>0.4560</b>	<b>0.2601</b>



3D screen shot	Hot spot position
	

## MEASUREMENT 15

HEAD

Type: Validation measurement (Complete)

Date of measurement: 27/3/2017

Measurement duration: 9 minutes 59 seconds

### **A. Experimental conditions.**

<b><u>Area Scan</u></b>	<u>dx=10mm dy=10mm</u>
<b><u>ZoomScan</u></b>	<u>8x8x7,dx=4mm dy=4mm dz=2mm,Complete</u>
<b><u>Phantom</u></b>	<u>Validation plane</u>
<b><u>Device Position</u></b>	<u>Dipole</u>
<b><u>Band</u></b>	<u>CW5800</u>
<b><u>Channels</u></b>	<u>Middle</u>
<b><u>Signal</u></b>	<u>CW (Duty cycle:1:1)</u>

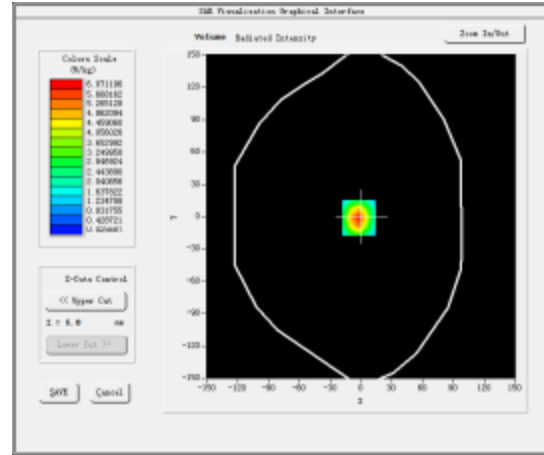
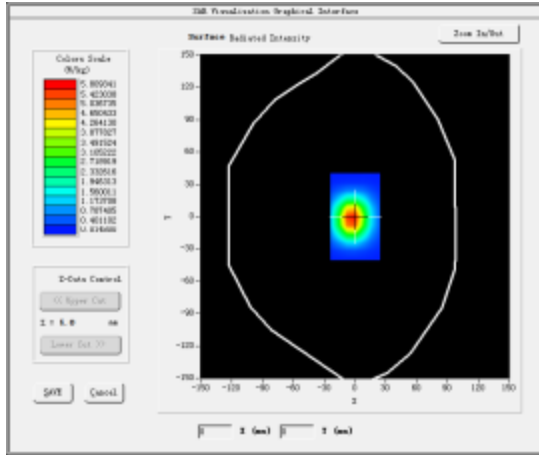
### **B. SAR Measurement Results**

Middle Band SAR (Channel -1):

<b>Frequency (MHz)</b>	5800.000000
<b>Relative permittivity (real part)</b>	34.225599
<b>Relative permittivity (imaginary part)</b>	16.160852
<b>Conductivity (S/m)</b>	5.211844
<b>Variation (%)</b>	0.050000

### SURFACE SAR

### VOLUME SAR

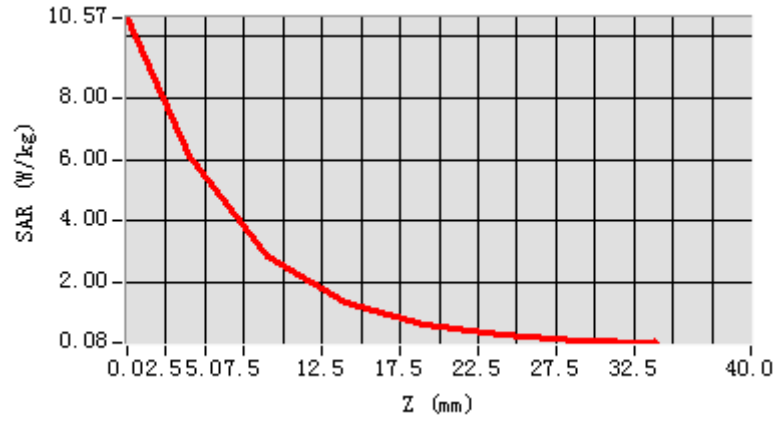


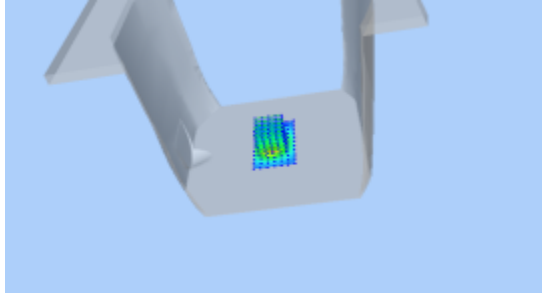
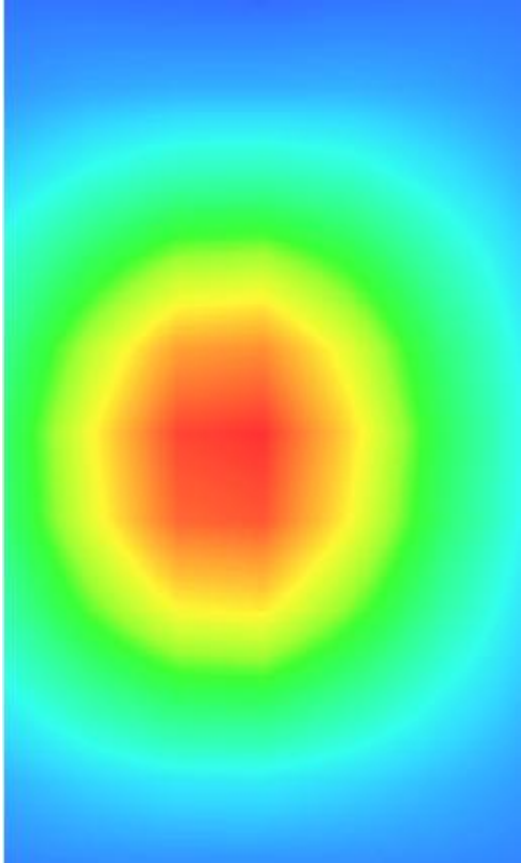
**Maximum location: X=-2.00, Y=-1.00**

**SAR Peak: 10.54 W/kg**

<b>SAR 10g (W/Kg)</b>	65.41043
<b>SAR 1g (W/Kg)</b>	195.19149

Z (mm)	0.00	4.00	9.00	14.00	19.00	24.00	29.00
SAR (W/Kg)	10.5655	6.0712	2.8292	1.3565	0.6515	0.3180	0.1553



3D screen shot	Hot spot position
	

## MEASUREMENT 16

BODY

Type: Validation measurement (Complete)

Date of measurement: 27/3/2017

Measurement duration: 10 minutes 36 seconds

### **A. Experimental conditions.**

<b><u>Area Scan</u></b>	<u>dx=10mm dy=10mm</u>
<b><u>ZoomScan</u></b>	<u>8x8x7,dx=4mm dy=4mm</u> <u>dz=2mm,Complete</u>
<b><u>Phantom</u></b>	<u>Validation plane</u>
<b><u>Device Position</u></b>	<u>Dipole</u>
<b><u>Band</u></b>	<u>CW5800</u>
<b><u>Channels</u></b>	<u>Middle</u>
<b><u>Signal</u></b>	<u>CW (Duty cycle:1:1)</u>

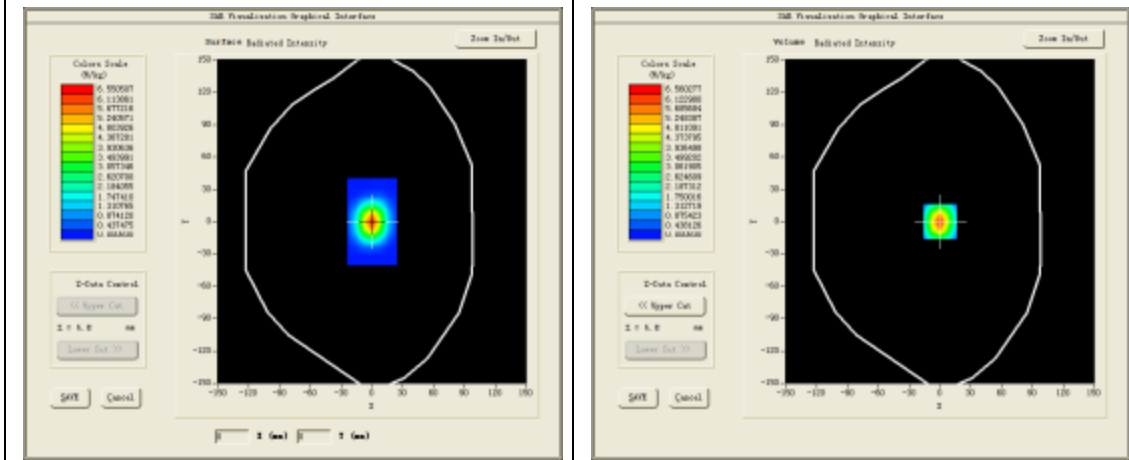
### **B. SAR Measurement Results**

Middle Band SAR (Channel -1):

<b>Frequency (MHz)</b>	5800.000000
<b>Relative permittivity (real part)</b>	48.090699
<b>Relative permittivity (imaginary part)</b>	19.043921
<b>Conductivity (S/m)</b>	6.14163
<b>Variation (%)</b>	0.010000

### SURFACE SAR

### VOLUME SAR



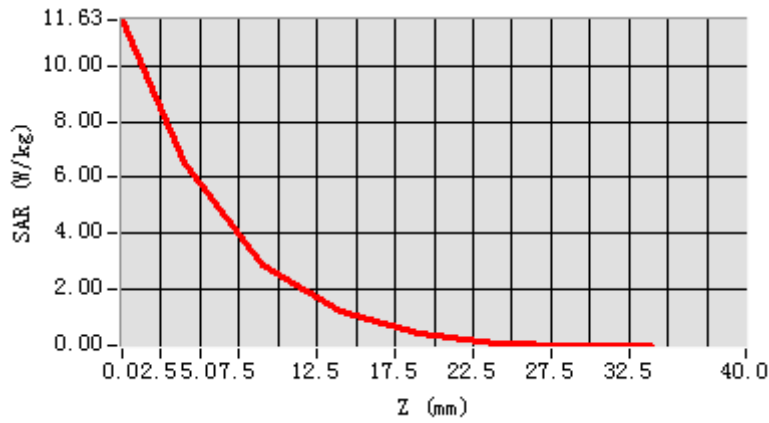
**Maximum location: X=0.00, Y=0.00**

**SAR Peak: 11.49 W/kg**

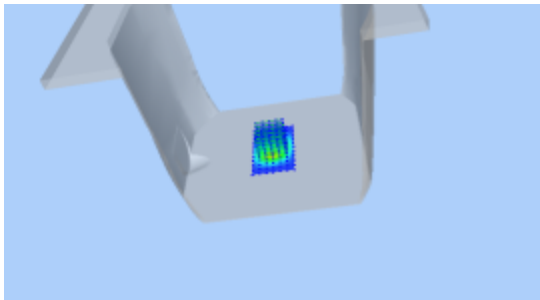
<b>SAR 10g (W/Kg)</b>	60.79996
<b>SAR 1g (W/Kg)</b>	179.62831



Z (mm)	0.00	4.00	9.00	14.00	19.00	24.00	29.00
SAR (W/Kg)	11.634	6.5603	2.8797	1.2004	0.4226	0.1066	0.0008



**3D screen shot**



**Hot spot position**

