



Annex A: System Check

Tested Model : CX

**Report Number:
FCC17010035A-6**

MEASUREMENT 1

BODY

Type: Validation measurement (Complete)

Date of measurement: 5/1/2017

Measurement duration: 11 minutes 54 seconds

A. Experimental conditions.

<u>Area Scan</u>	<u>dx=8mm dy=8mm</u>
<u>ZoomScan</u>	<u>5x5x7,dx=8mm dy=8mm dz=5mm,Complete</u>
<u>Phantom</u>	<u>Validation plane</u>
<u>Device Position</u>	<u>Dipole</u>
<u>Band</u>	<u>CW835</u>
<u>Channels</u>	<u>Middle</u>
<u>Signal</u>	<u>CW (Duty cycle:1:1)</u>

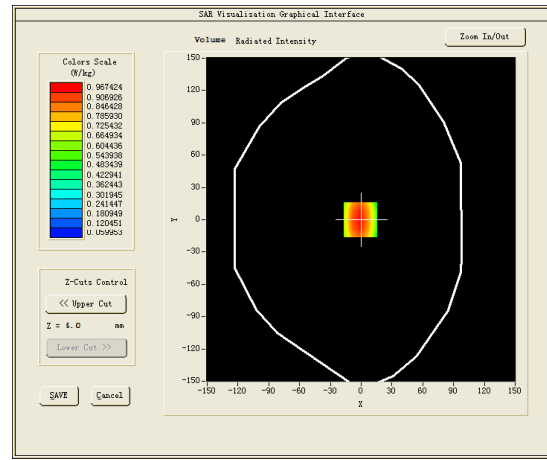
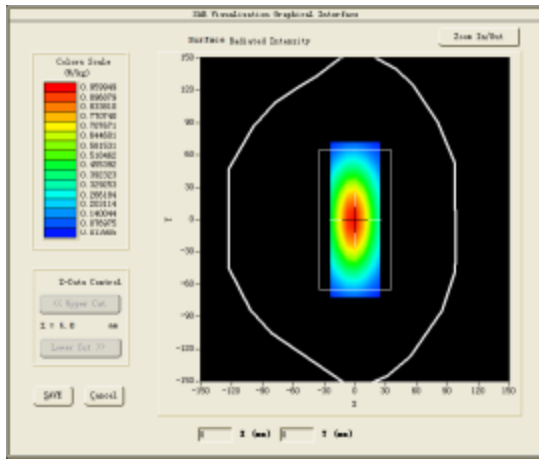
B. SAR Measurement Results

Middle Band SAR (Channel -1):

Frequency (MHz)	835.000000
Relative permittivity (real part)	53.927799
Relative permittivity (imaginary part)	21.281300
Conductivity (S/m)	0.987216
Variation (%)	0.120000

SURFACE SAR

VOLUME SAR

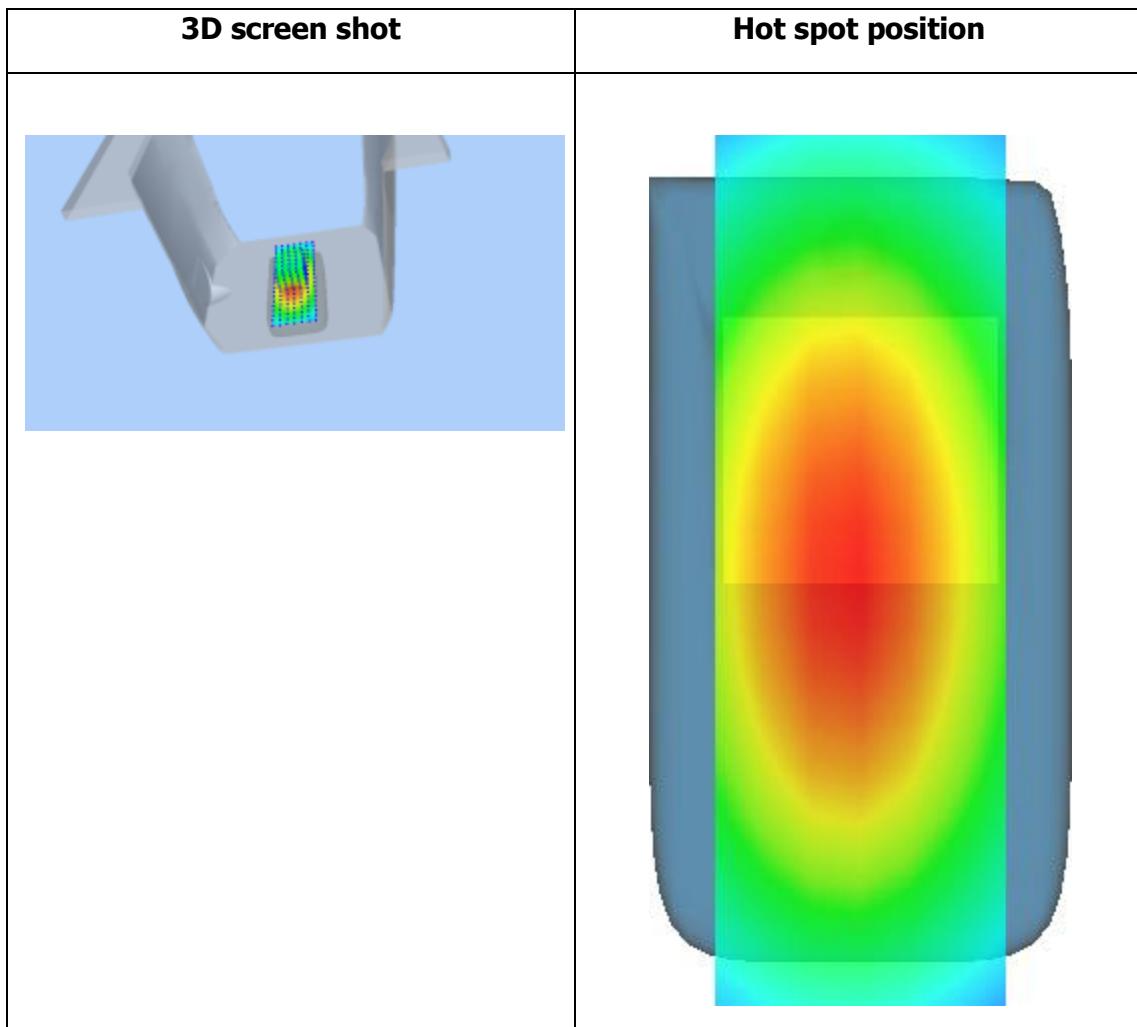
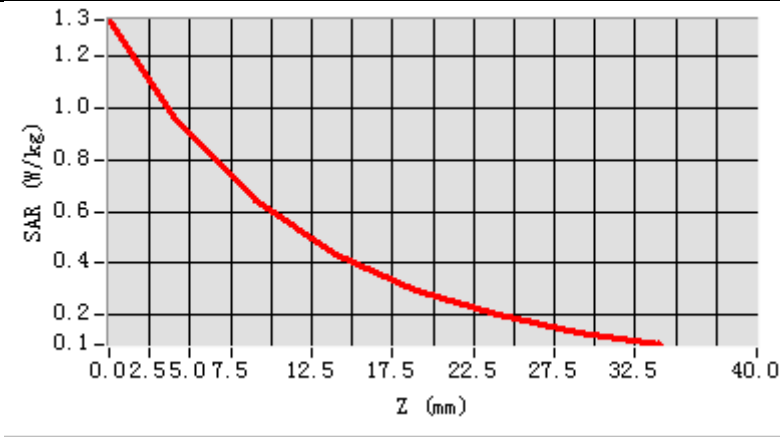


Maximum location: X=-1.00, Y=0.00

SAR Peak: 1.44 W/kg

SAR 10g (W/Kg)	6.44746
SAR 1g (W/Kg)	10.14583

Z (mm)	0.00	4.00	9.00	14.00	19.00	24.00	29.00
SAR (W/Kg)	1.3418	0.9674	0.6426	0.4358	0.2947	0.1989	0.1326



MEASUREMENT 2

HEAD

Type: Validation measurement (Complete)

Date of measurement: 5/1/2017

Measurement duration: 11 minutes 54 seconds

A. Experimental conditions.

<u>Area Scan</u>	<u>dx=8mm dy=8mm</u>
<u>ZoomScan</u>	<u>5x5x7,dx=8mm dy=8mm dz=5mm,Complete</u>
<u>Phantom</u>	<u>Validation plane</u>
<u>Device Position</u>	<u>Dipole</u>
<u>Band</u>	<u>CW835</u>
<u>Channels</u>	<u>Middle</u>
<u>Signal</u>	<u>CW (Duty cycle:1:1)</u>

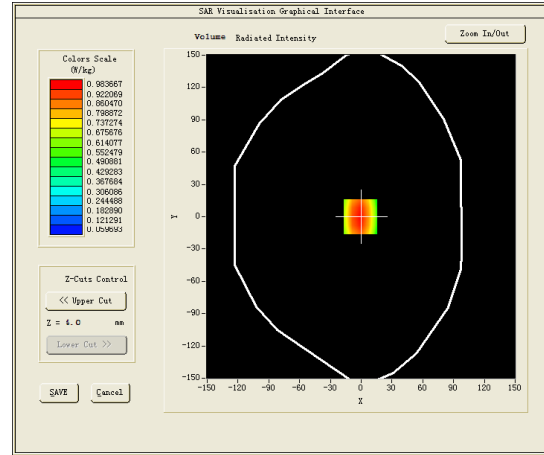
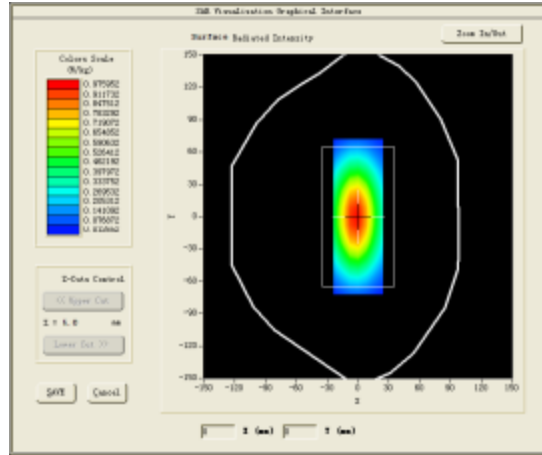
B. SAR Measurement Results

Middle Band SAR (Channel -1):

Frequency (MHz)	835.000000
Relative permittivity (real part)	40.328999
Relative permittivity (imaginary part)	19.880501
Conductivity (S/m)	0.922234
Variation (%)	-0.070000

SURFACE SAR

VOLUME SAR

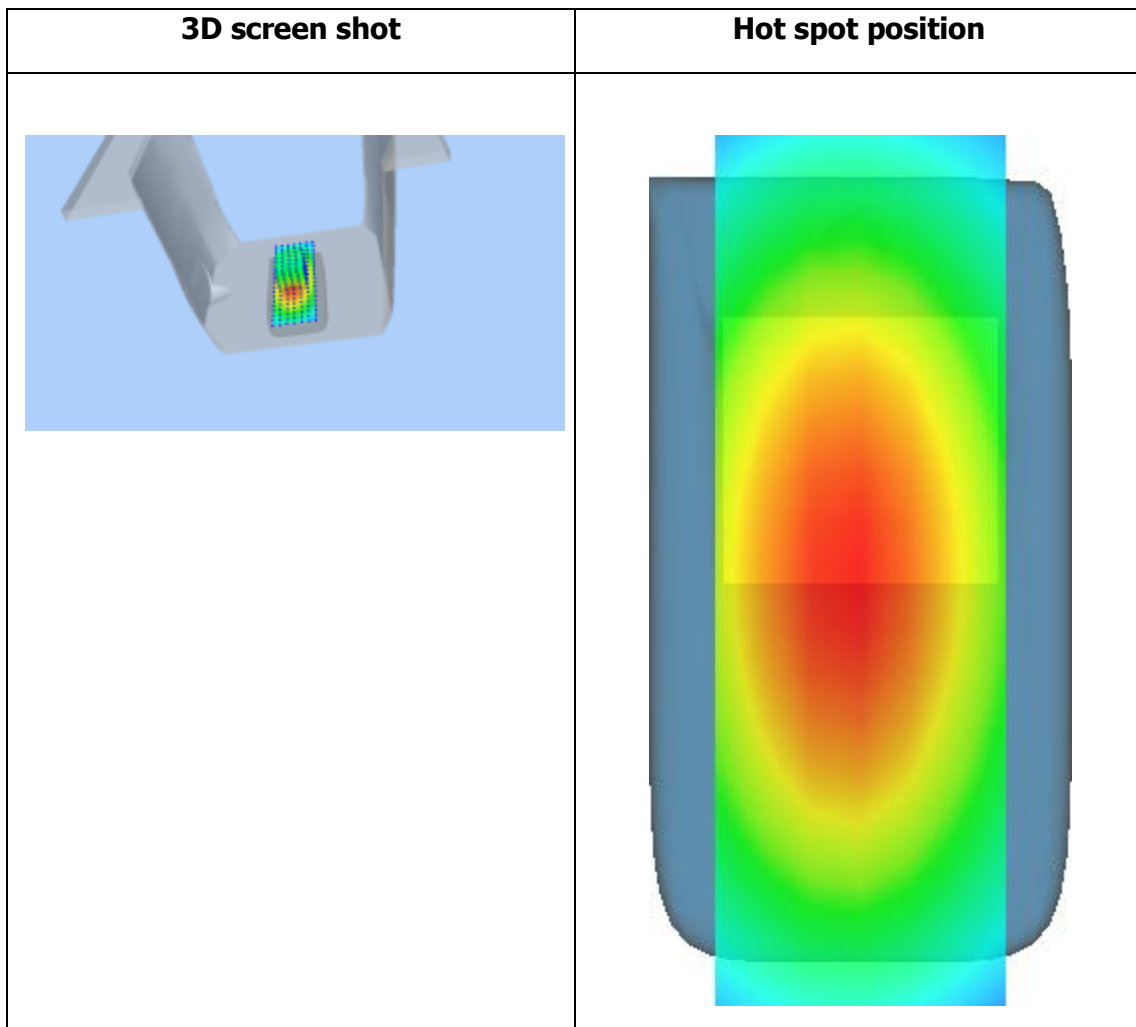
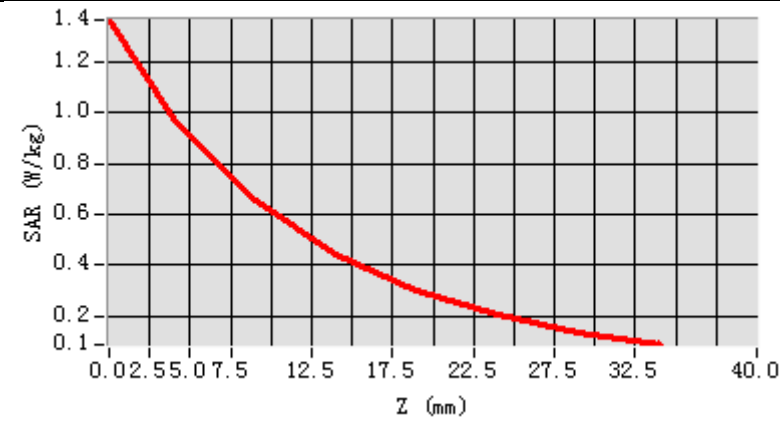


Maximum location: X=-1.00, Y=0.00

SAR Peak: 1.37 W/kg

SAR 10g (W/Kg)	6.15004
SAR 1g (W/Kg)	9.70049

Z (mm)	0.00	4.00	9.00	14.00	19.00	24.00	29.00
SAR (W/Kg)	1.3669	0.9837	0.6529	0.4412	0.2993	0.2017	0.1343



MEASUREMENT 3

BODY

Type: Validation measurement (Complete)

Date of measurement: 6/1/2017

Measurement duration: 11 minutes 43 seconds

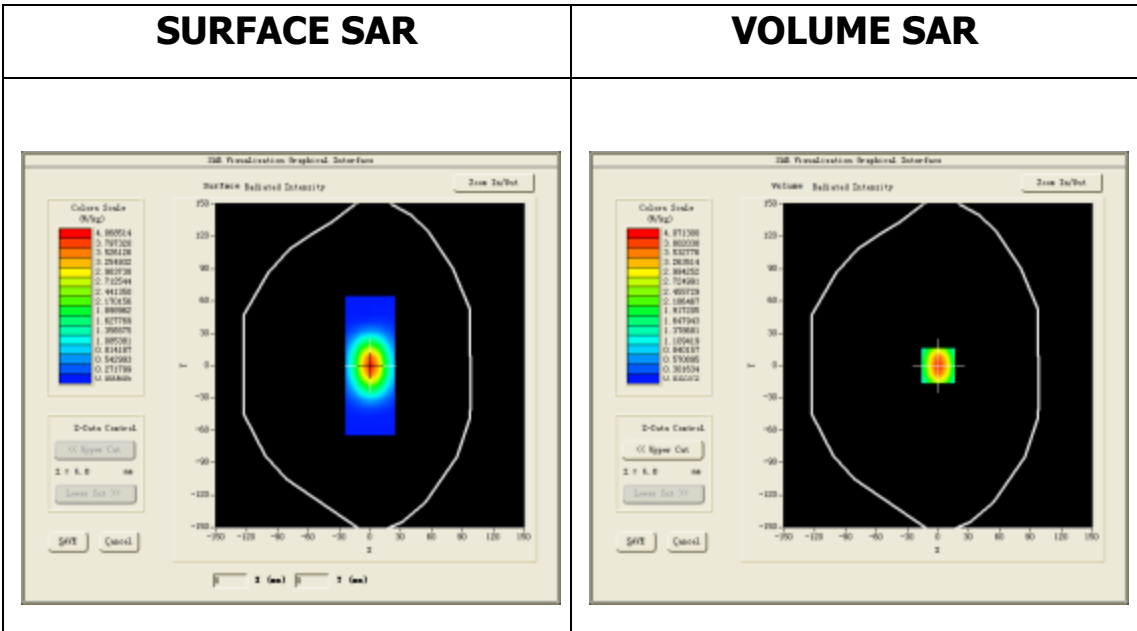
A. Experimental conditions.

<u>Area Scan</u>	<u>dx=8mm dy=8mm</u>
<u>ZoomScan</u>	<u>5x5x7,dx=8mm dy=8mm</u> <u>dz=5mm,Complete</u>
<u>Phantom</u>	<u>Validation plane</u>
<u>Device Position</u>	<u>Dipole</u>
<u>Band</u>	<u>CW1800</u>
<u>Channels</u>	<u>Middle</u>
<u>Signal</u>	<u>CW (Duty cycle:1:1)</u>

B. SAR Measurement Results

Middle Band SAR (Channel -1):

Frequency (MHz)	1800.000000
Relative permittivity (real part)	52.970200
Relative permittivity (imaginary part)	15.414900
Conductivity (S/m)	1.541490
Variation (%)	-0.080000

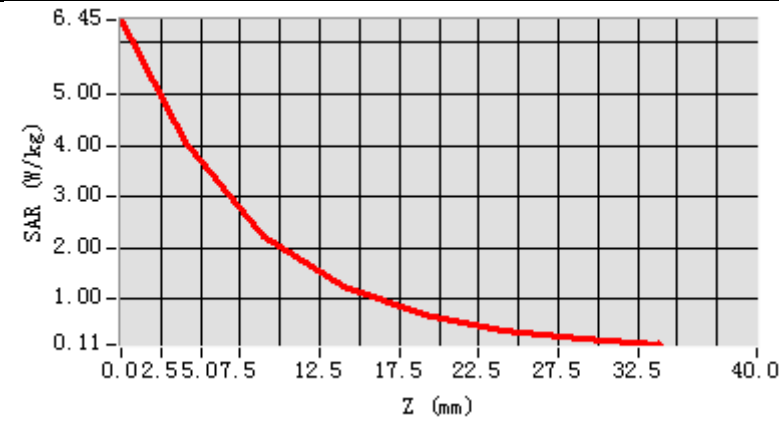


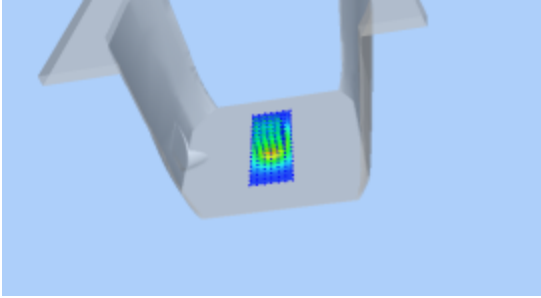
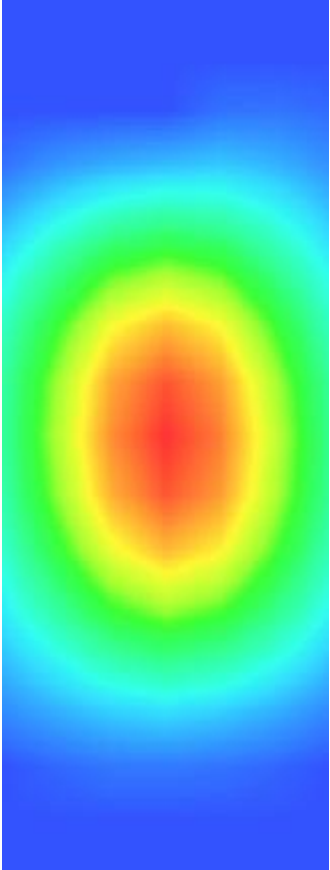
Maximum location: X=0.00, Y=0.00

SAR Peak: 6.86 W/kg

SAR 10g (W/Kg)	21.71523
SAR 1g (W/Kg)	41.55761

Z (mm)	0.00	4.00	9.00	14.00	19.00	24.00	29.00
SAR (W/Kg)	6.4478	4.0713	2.2310	1.2495	0.7043	0.3895	0.2089



3D screen shot	Hot spot position
 <p>A 3D perspective view of a grey, L-shaped device. A small rectangular area on the inner surface of the 'L' is highlighted with a color gradient from blue to red, representing the hot spot location.</p>	 <p>A vertical 2D heatmap visualization of the hot spot. The color gradient transitions from dark blue at the top and bottom edges to a bright red/orange center, indicating the highest intensity region.</p>

MEASUREMENT 4

HEAD

Type: Validation measurement (Complete)

Date of measurement: 6/1/2017

Measurement duration: 11 minutes 41 seconds

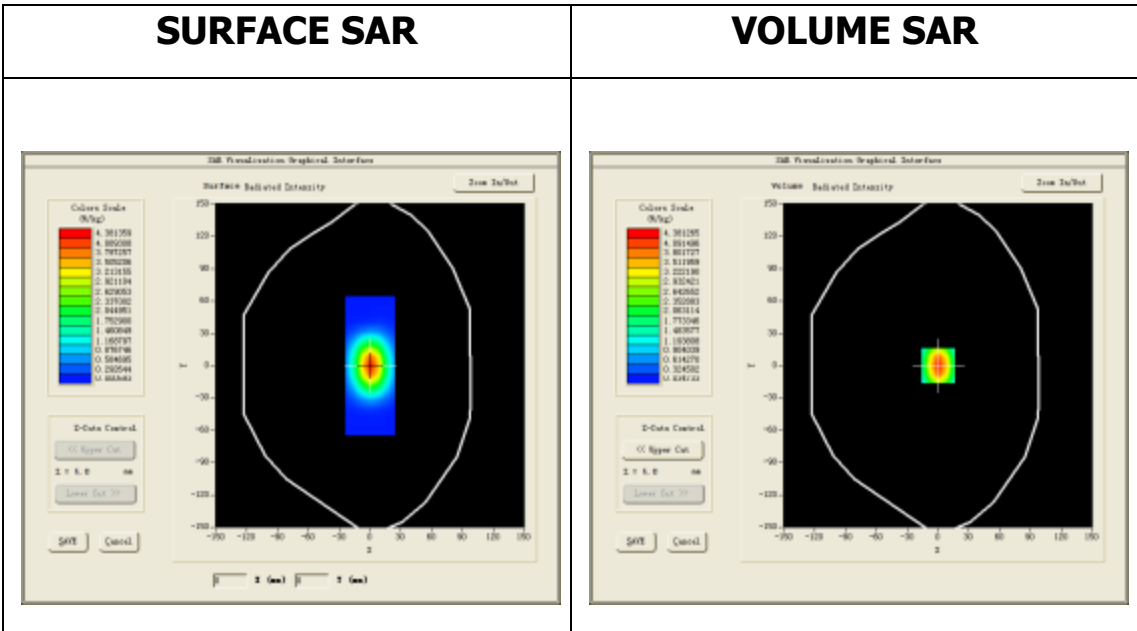
A. Experimental conditions.

<u>Area Scan</u>	<u>dx=8mm dy=8mm</u>
<u>ZoomScan</u>	<u>5x5x7,dx=8mm dy=8mm dz=5mm,Complete</u>
<u>Phantom</u>	<u>Validation plane</u>
<u>Device Position</u>	<u>Dipole</u>
<u>Band</u>	<u>CW1800</u>
<u>Channels</u>	<u>Middle</u>
<u>Signal</u>	<u>CW (Duty cycle:1:1)</u>

B. SAR Measurement Results

Middle Band SAR (Channel -1):

Frequency (MHz)	1800.000000
Relative permittivity (real part)	39.484501
Relative permittivity (imaginary part)	14.358300
Conductivity (S/m)	1.435830
Variation (%)	0.610000

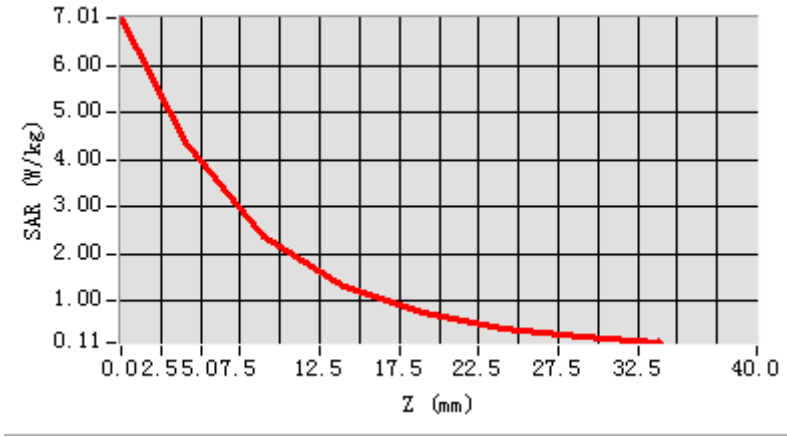


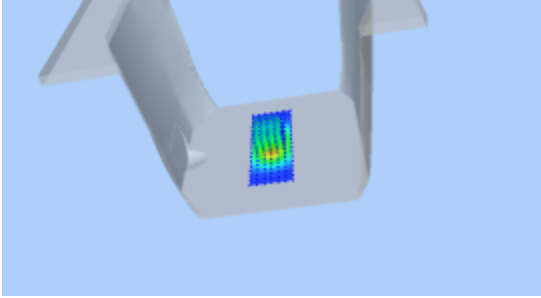
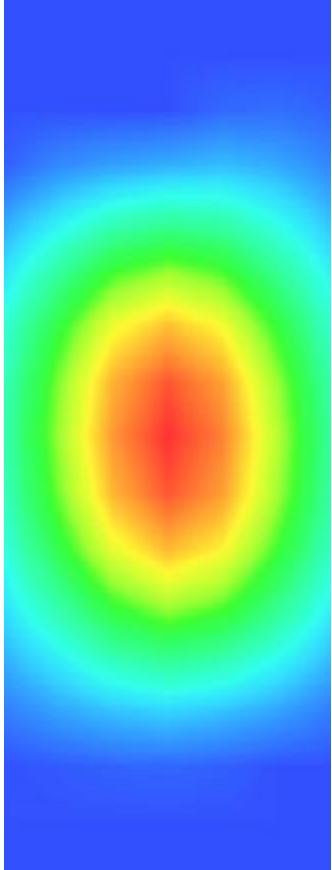
Maximum location: X=0.00, Y=0.00

SAR Peak: 6.95 W/kg

SAR 10g (W/Kg)	20.60484
SAR 1g (W/Kg)	39.98096

Z (mm)	0.00	4.00	9.00	14.00	19.00	24.00	29.00
SAR (W/Kg)	7.0118	4.3813	2.3674	1.3177	0.7415	0.4093	0.2206



3D screen shot	Hot spot position
 <p>A 3D perspective view of a grey, L-shaped device. A small rectangular area on the horizontal part of the device is highlighted with a color gradient from blue to red, indicating a hot spot.</p>	 <p>A vertical rectangular heatmap visualization. The color gradient transitions from dark blue at the top and bottom edges to a bright red/yellow center, representing the spatial distribution of the hot spot.</p>

MEASUREMENT 5

BODY

Type: Validation measurement (Complete)

Date of measurement: 7/1/2017

Measurement duration: 10 minutes 57 seconds

A. Experimental conditions.

<u>Area Scan</u>	<u>dx=8mm dy=8mm</u>
<u>ZoomScan</u>	<u>5x5x7,dx=8mm dy=8mm dz=5mm,Complete</u>
<u>Phantom</u>	<u>Validation plane</u>
<u>Device Position</u>	<u>Dipole</u>
<u>Band</u>	<u>CW1900</u>
<u>Channels</u>	<u>Middle</u>
<u>Signal</u>	<u>CW (Duty cycle:1:1)</u>

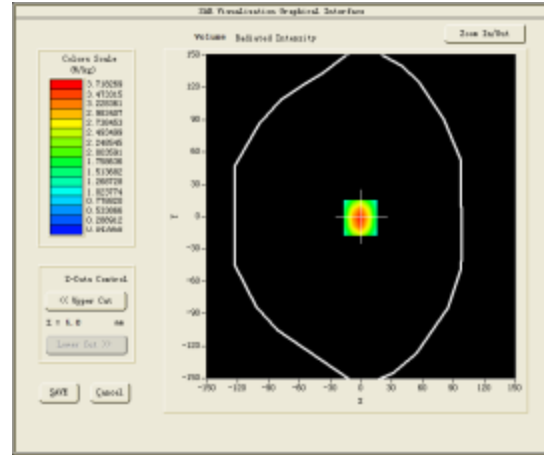
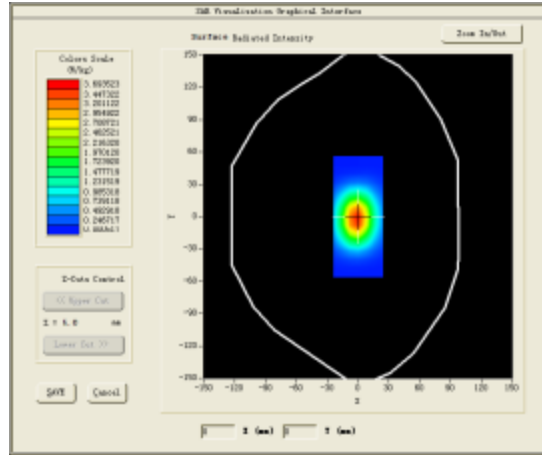
B. SAR Measurement Results

Middle Band SAR (Channel -1):

Frequency (MHz)	1900.000000
Relative permittivity (real part)	53.365299
Relative permittivity (imaginary part)	14.757600
Conductivity (S/m)	1.557747
Variation (%)	-0.450000

SURFACE SAR

VOLUME SAR

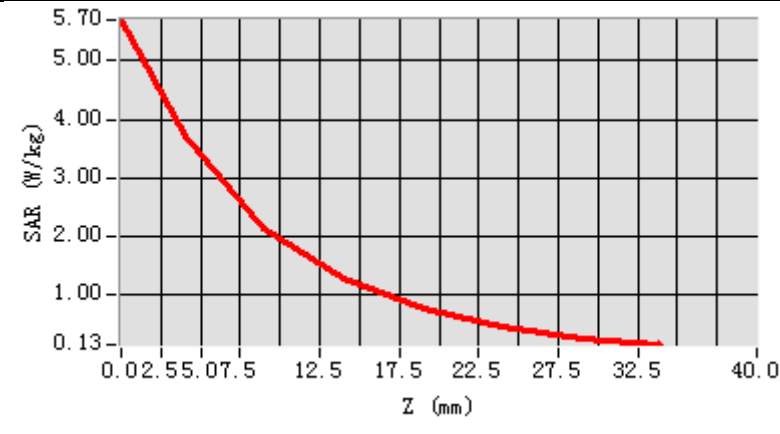


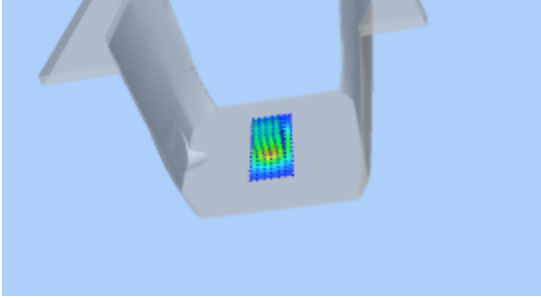
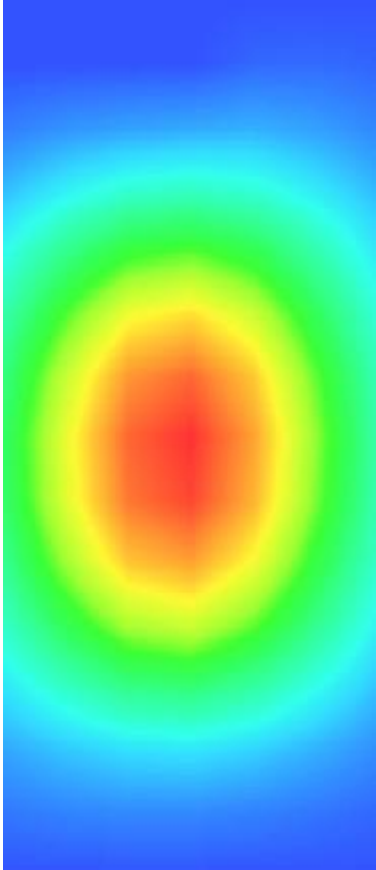
Maximum location: X=-1.00, Y=-1.00

SAR Peak: 6.26 W/kg

SAR 10g (W/Kg)	20.93533
SAR 1g (W/Kg)	39.32904

Z (mm)	0.00	4.00	9.00	14.00	19.00	24.00	29.00
SAR (W/Kg)	5.7034	3.7183	2.1347	1.2560	0.7338	0.4260	0.2429



3D screen shot	Hot spot position
	

MEASUREMENT 6

HEAD

Type: Validation measurement (Complete)

Date of measurement: 7/1/2017

Measurement duration: 11 minutes 6 seconds

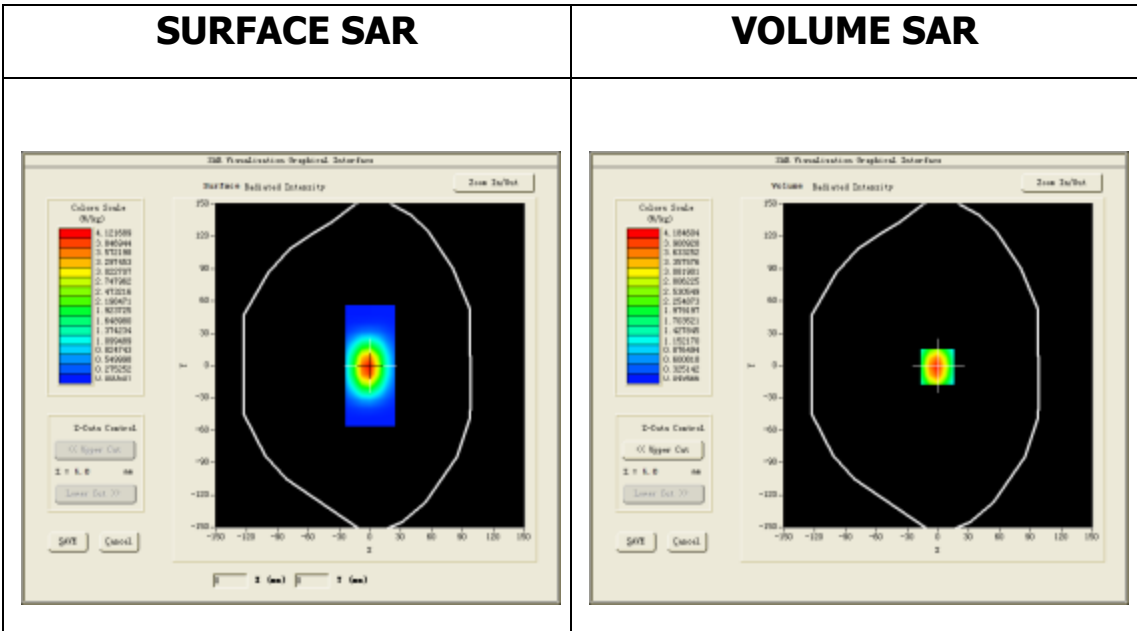
A. Experimental conditions.

<u>Area Scan</u>	<u>dx=8mm dy=8mm</u>
<u>ZoomScan</u>	<u>5x5x7,dx=8mm dy=8mm dz=5mm,Complete</u>
<u>Phantom</u>	<u>Validation plane</u>
<u>Device Position</u>	<u>Dipole</u>
<u>Band</u>	<u>CW1900</u>
<u>Channels</u>	<u>Middle</u>
<u>Signal</u>	<u>CW (Duty cycle:1:1)</u>

B. SAR Measurement Results

Middle Band SAR (Channel -1):

Frequency (MHz)	1900.000000
Relative permittivity (real part)	39.976398
Relative permittivity (imaginary part)	13.386300
Conductivity (S/m)	1.412998
Variation (%)	-0.040000

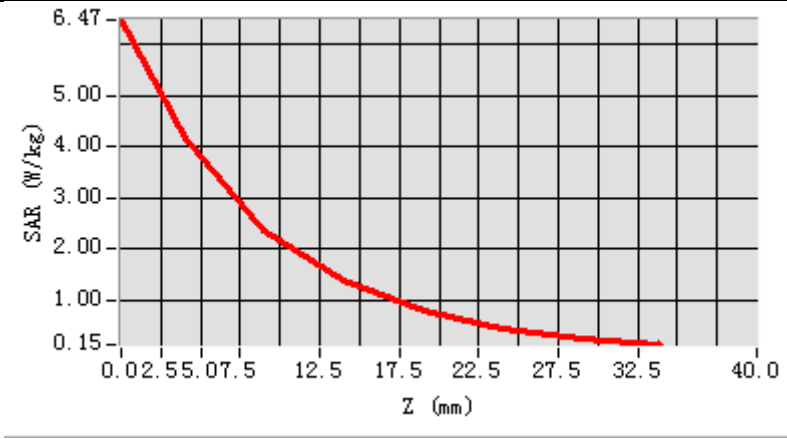


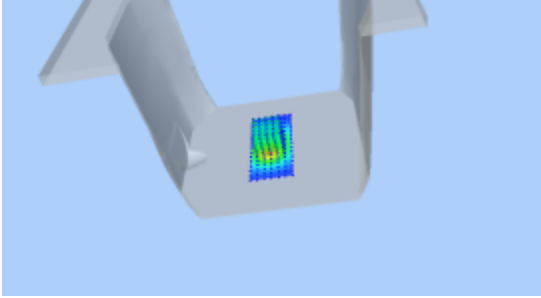
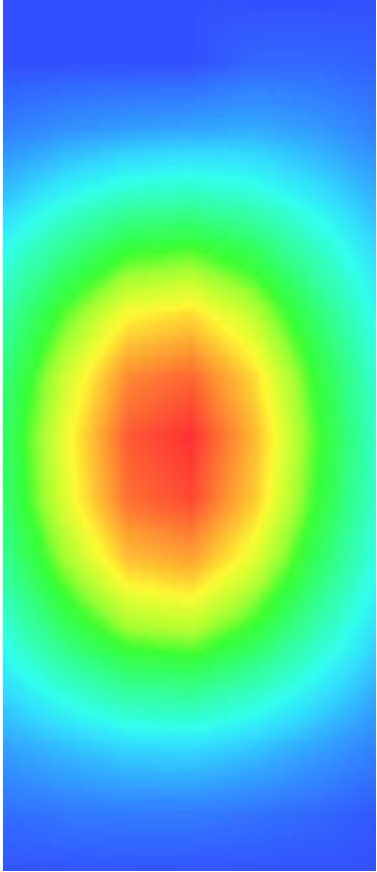
Maximum location: X=-1.00, Y=-1.00

SAR Peak: 6.48 W/kg

SAR 10g (W/Kg)	21.07104
SAR 1g (W/Kg)	39.97625

Z (mm)	0.00	4.00	9.00	14.00	19.00	24.00	29.00
SAR (W/Kg)	6.4693	4.1846	2.3780	1.3892	0.8084	0.4680	0.2662



3D screen shot	Hot spot position
	

MEASUREMENT 7

BODY

Type: Validation measurement (Complete)

Date of measurement: 9/1/2017

Measurement duration: 9 minutes 46 seconds

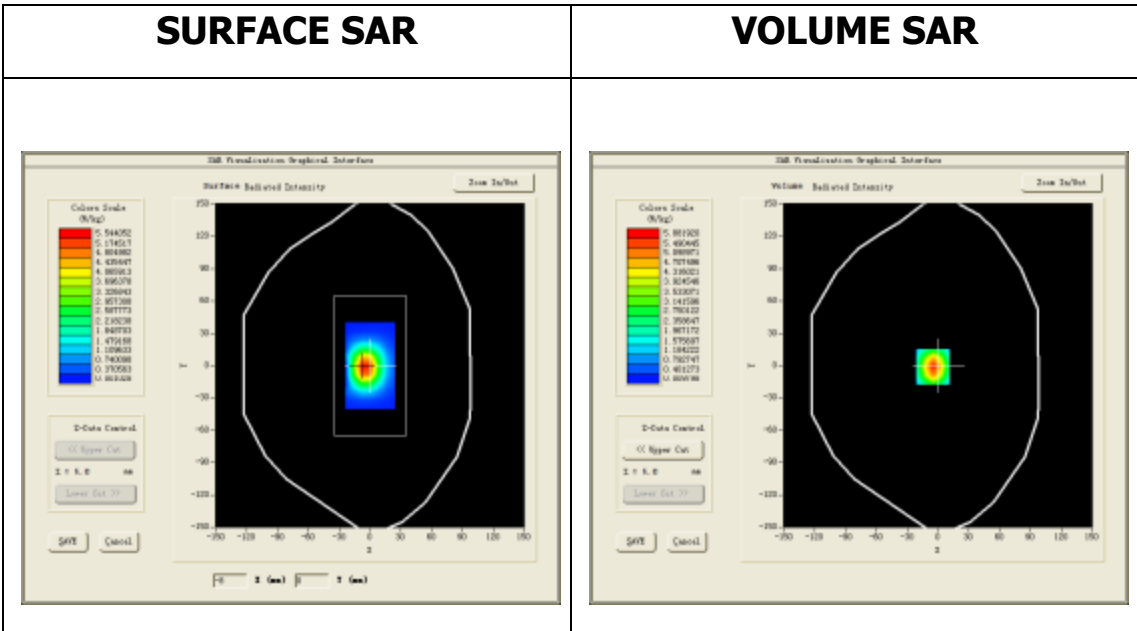
A. Experimental conditions.

<u>Area Scan</u>	<u>dx=8mm dy=8mm</u>
<u>ZoomScan</u>	<u>5x5x7,dx=8mm dy=8mm dz=5mm,Complete</u>
<u>Phantom</u>	<u>Validation plane</u>
<u>Device Position</u>	<u>Dipole</u>
<u>Band</u>	<u>CW2450</u>
<u>Channels</u>	<u>Middle</u>
<u>Signal</u>	<u>CW (Duty cycle:1:1)</u>

B. SAR Measurement Results

Middle Band SAR (Channel -1):

Frequency (MHz)	2450.000000
Relative permittivity (real part)	52.735699
Relative permittivity (imaginary part)	14.017300
Conductivity (S/m)	1.907910
Variation (%)	0.390000

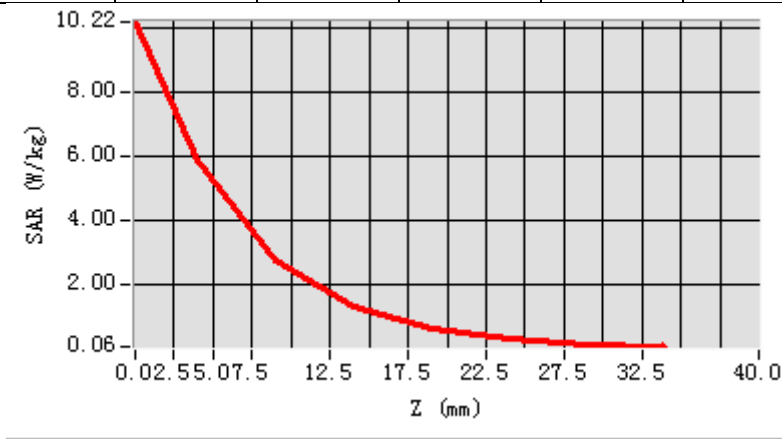


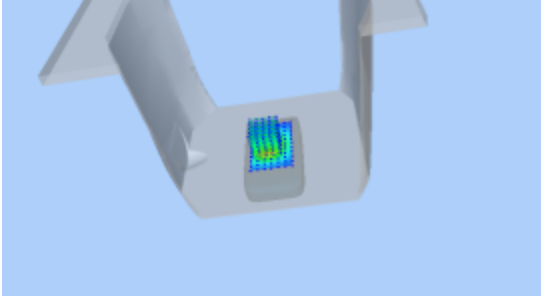
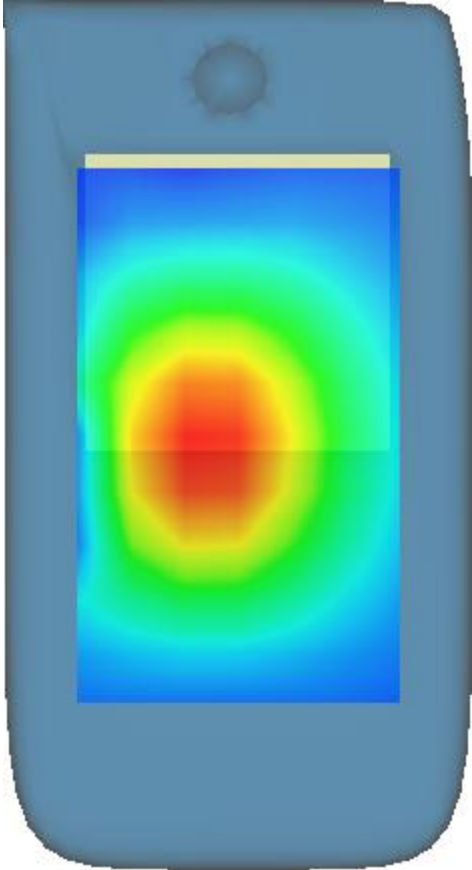
Maximum location: X=-5.00, Y=-1.00

SAR Peak: 10.96 W/kg

SAR 10g (W/Kg)	23.33453
SAR 1g (W/Kg)	54.33343

Z (mm)	0.00	4.00	9.00	14.00	19.00	24.00	29.00
SAR (W/Kg)	10.2188	5.8819	2.7478	1.3151	0.6266	0.2969	0.1341



3D screen shot	Hot spot position
	

MEASUREMENT 8

HEAD

Type: Validation measurement (Complete)

Date of measurement: 9/1/2017

Measurement duration: 9 minutes 46 seconds

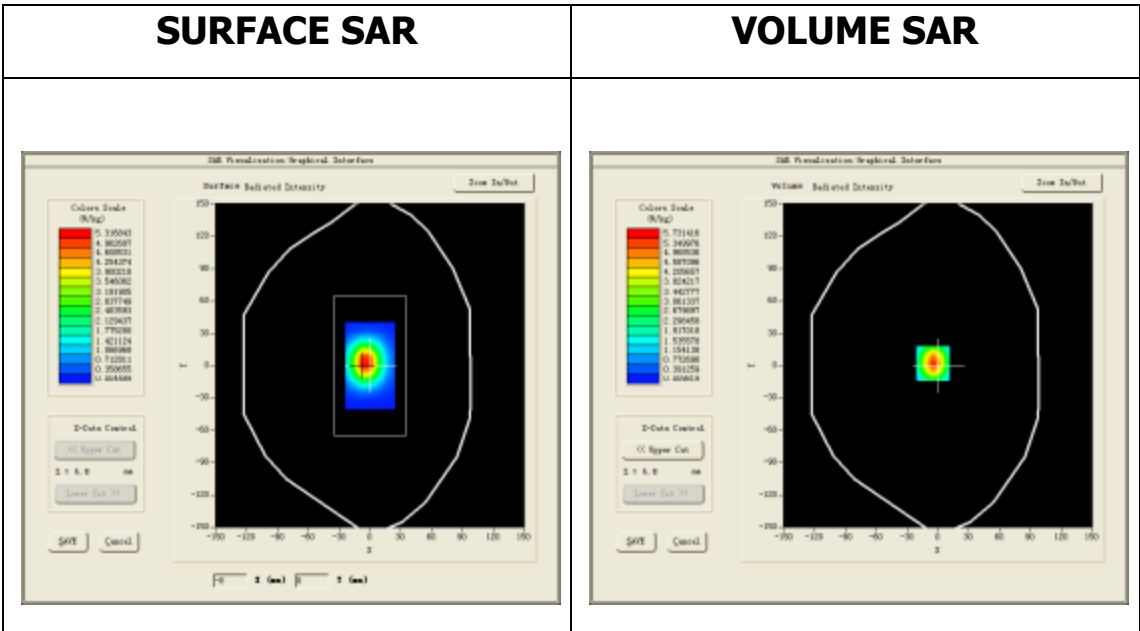
A. Experimental conditions.

<u>Area Scan</u>	<u>dx=8mm dy=8mm</u>
<u>ZoomScan</u>	<u>5x5x7,dx=8mm dy=8mm dz=5mm,Complete</u>
<u>Phantom</u>	<u>Validation plane</u>
<u>Device Position</u>	<u>Dipole</u>
<u>Band</u>	<u>CW2450</u>
<u>Channels</u>	<u>Middle</u>
<u>Signal</u>	<u>CW (Duty cycle:1:1)</u>

B. SAR Measurement Results

Middle Band SAR (Channel -1):

Frequency (MHz)	2450.000000
Relative permittivity (real part)	39.235699
Relative permittivity (imaginary part)	12.917300
Conductivity (S/m)	1.758188
Variation (%)	2.820000

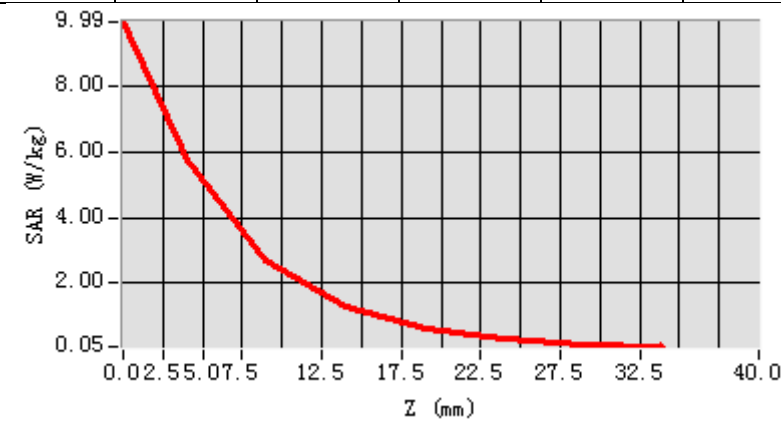


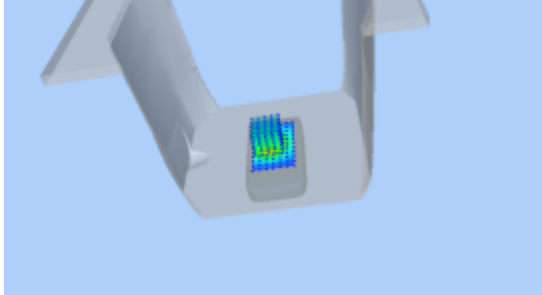
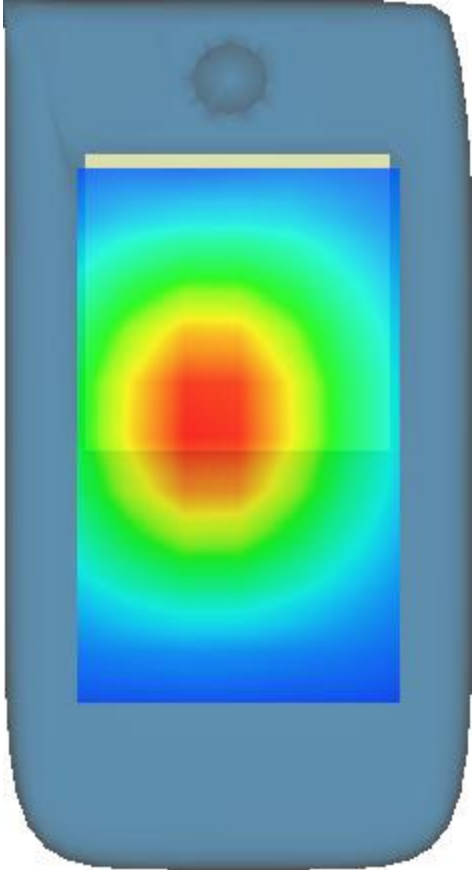
Maximum location: X=-5.00, Y=2.00

SAR Peak: 9.92 W/kg

SAR 10g (W/Kg)	24.52895
SAR 1g (W/Kg)	53.93069

Z (mm)	0.00	4.00	9.00	14.00	19.00	24.00	29.00
SAR (W/Kg)	9.9915	5.7314	2.6626	1.2722	0.6047	0.2852	0.1274



3D screen shot	Hot spot position
	

MEASUREMENT 9

BODY

Type: Validation measurement (Complete)

Date of measurement: 10/1/2017

Measurement duration: 10 minutes 13 seconds

A. Experimental conditions.

<u>Area Scan</u>	<u>dx=8mm dy=8mm</u>
<u>ZoomScan</u>	<u>5x5x7,dx=8mm dy=8mm dz=5mm,Complete</u>
<u>Phantom</u>	<u>Validation plane</u>
<u>Device Position</u>	<u>Dipole</u>
<u>Band</u>	<u>CW2600</u>
<u>Channels</u>	<u>Middle</u>
<u>Signal</u>	<u>CW (Duty cycle:1:1)</u>

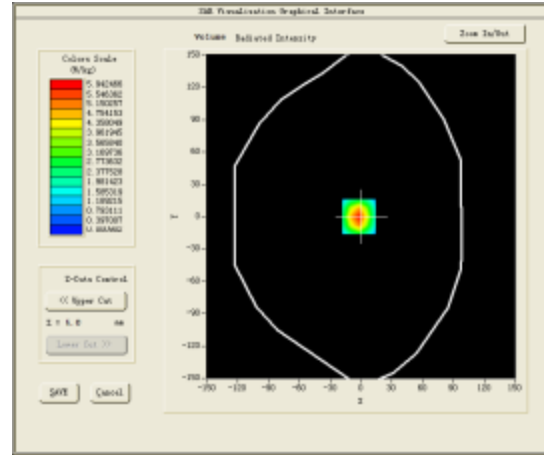
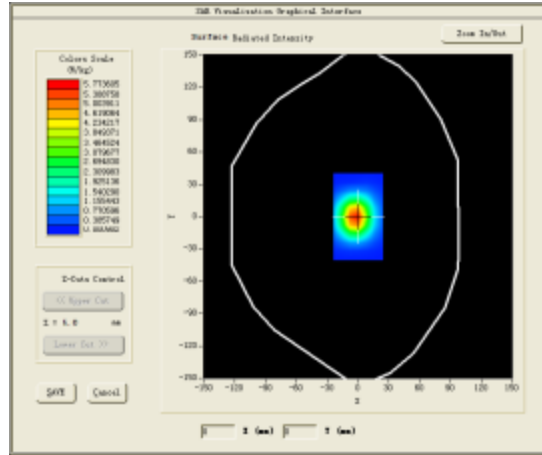
B. SAR Measurement Results

Middle Band SAR (Channel -1):

Frequency (MHz)	2600.000000
Relative permittivity (real part)	52.007900
Relative permittivity (imaginary part)	14.458500
Conductivity (S/m)	2.088450
Variation (%)	-0.220000

SURFACE SAR

VOLUME SAR

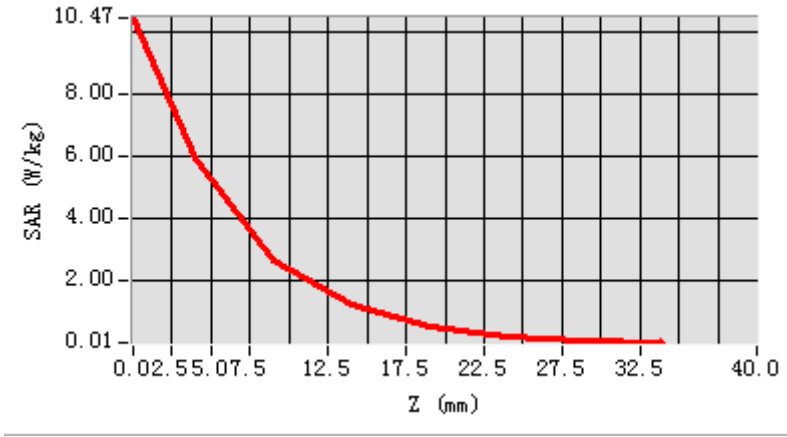


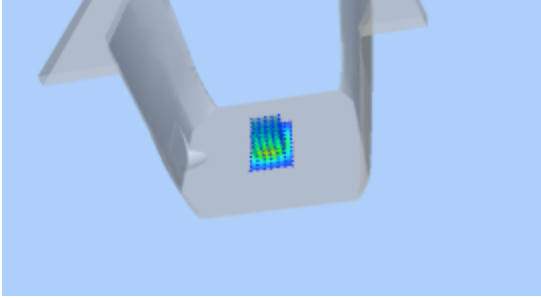
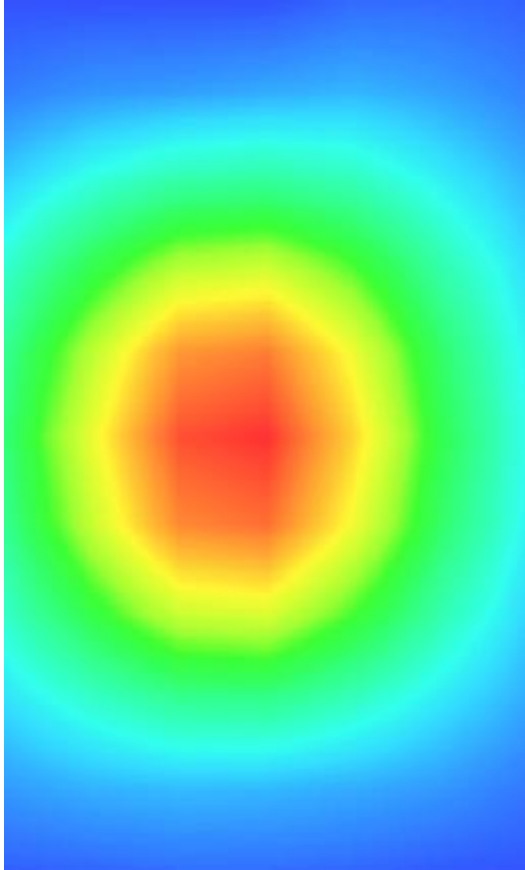
Maximum location: X=-2.00, Y=0.00

SAR Peak: 10.74 W/kg

SAR 10g (W/Kg)	25.59674
SAR 1g (W/Kg)	57.86435

Z (mm)	0.00	4.00	9.00	14.00	19.00	24.00	29.00
SAR (W/Kg)	10.4745	5.9425	2.6827	1.2126	0.5266	0.2069	0.0714



3D screen shot	Hot spot position
	

MEASUREMENT 10

HEAD

Type: Validation measurement (Complete)

Date of measurement: 10/1/2017

Measurement duration: 10 minutes 12 seconds

A. Experimental conditions.

<u>Area Scan</u>	<u>dx=8mm dy=8mm</u>
<u>ZoomScan</u>	<u>5x5x7,dx=8mm dy=8mm dz=5mm,Complete</u>
<u>Phantom</u>	<u>Validation plane</u>
<u>Device Position</u>	<u>Dipole</u>
<u>Band</u>	<u>CW2600</u>
<u>Channels</u>	<u>Middle</u>
<u>Signal</u>	<u>CW (Duty cycle:1:1)</u>

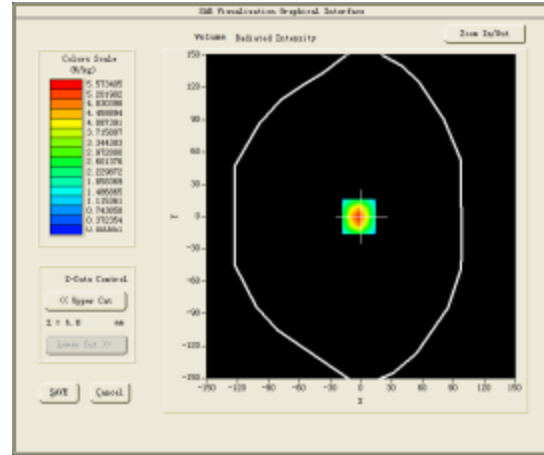
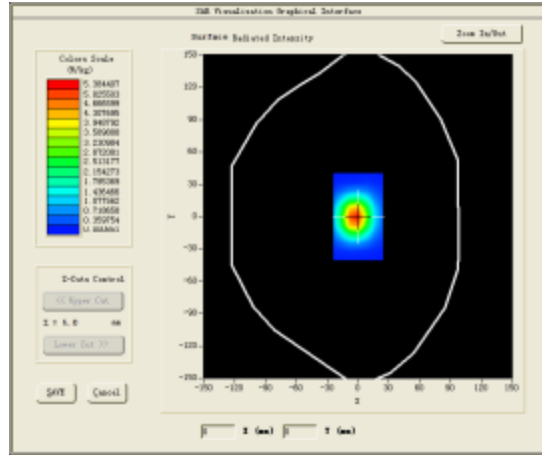
B. SAR Measurement Results

Middle Band SAR (Channel -1):

Frequency (MHz)	2600.000000
Relative permittivity (real part)	38.979599
Relative permittivity (imaginary part)	13.989700
Conductivity (S/m)	2.020734
Variation (%)	0.250000

SURFACE SAR

VOLUME SAR

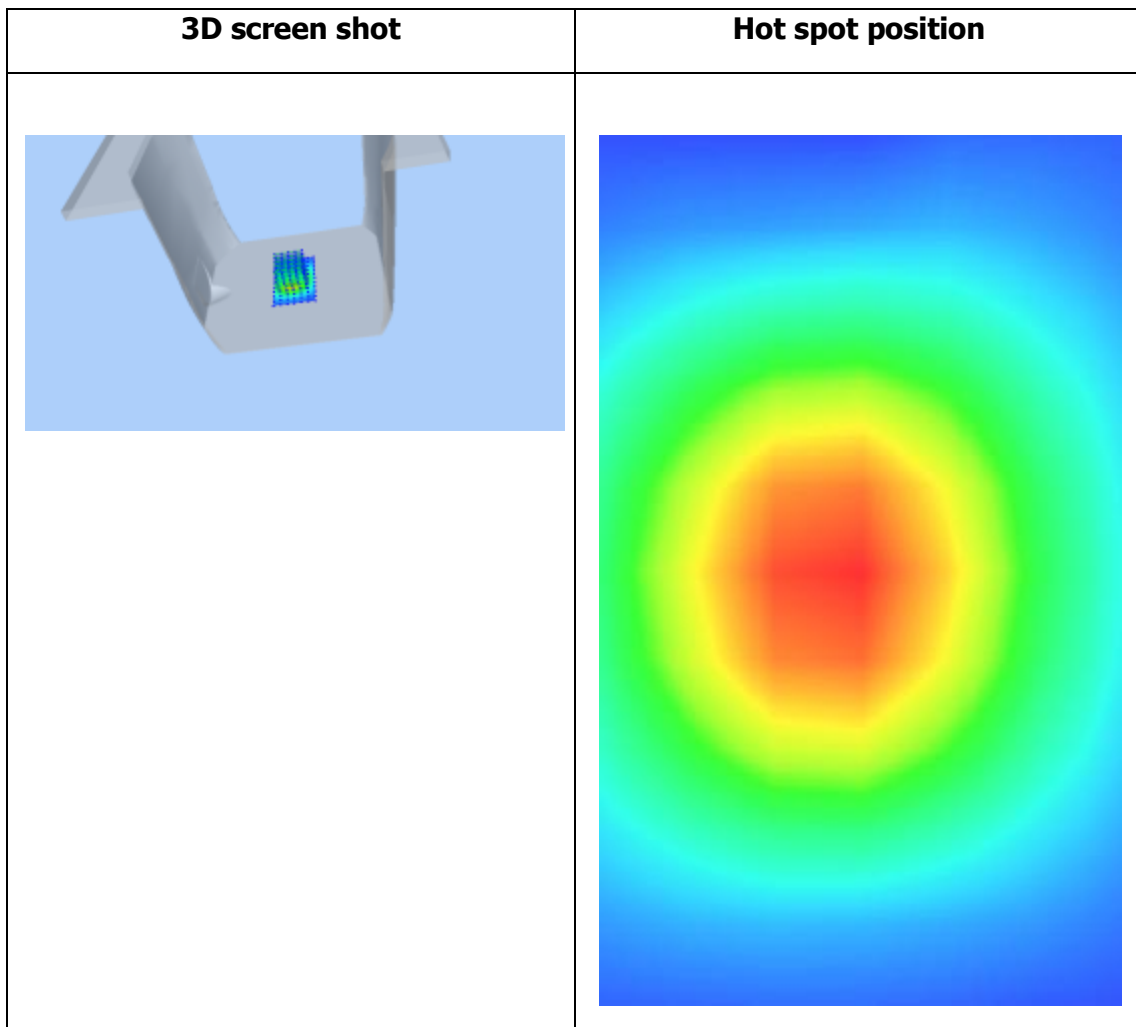
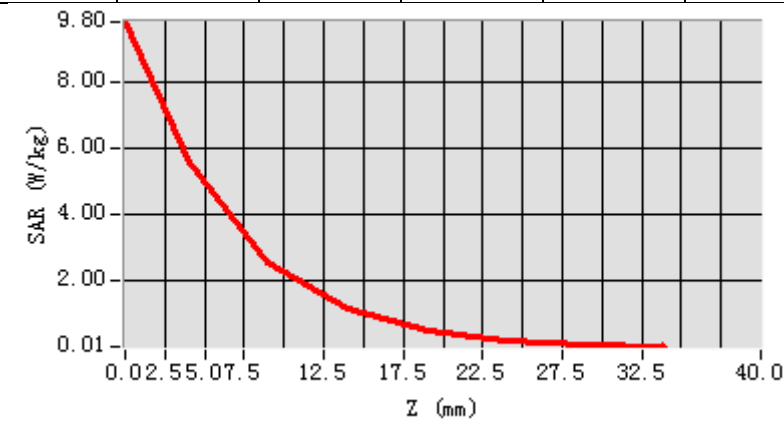


Maximum location: X=-2.00, Y=0.00

SAR Peak: 9.73 W/kg

SAR 10g (W/Kg)	23.42963
SAR 1g (W/Kg)	53.18259

Z (mm)	0.00	4.00	9.00	14.00	19.00	24.00	29.00
SAR (W/Kg)	9.8044	5.5734	2.5229	1.1430	0.4950	0.1964	0.0689



MEASUREMENT 11

HEAD

Type: Validation measurement (Complete)

Date of measurement: 17/1/2017

Measurement duration: 11 minutes 54 seconds

A. Experimental conditions.

<u>Area Scan</u>	<u>dx=10mm dy=10mm</u>
<u>ZoomScan</u>	<u>8x8x7,dx=4mm dy=4mm dz=2mm,Complete</u>
<u>Phantom</u>	<u>Validation plane</u>
<u>Device Position</u>	<u>Dipole</u>
<u>Band</u>	<u>CW5200</u>
<u>Channels</u>	<u>Middle</u>
<u>Signal</u>	<u>CW (Duty cycle:1:1)</u>

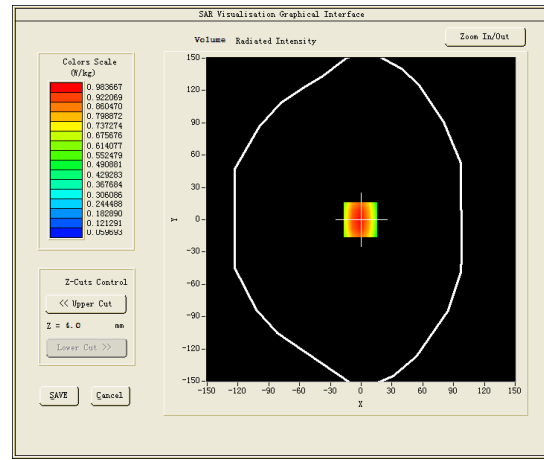
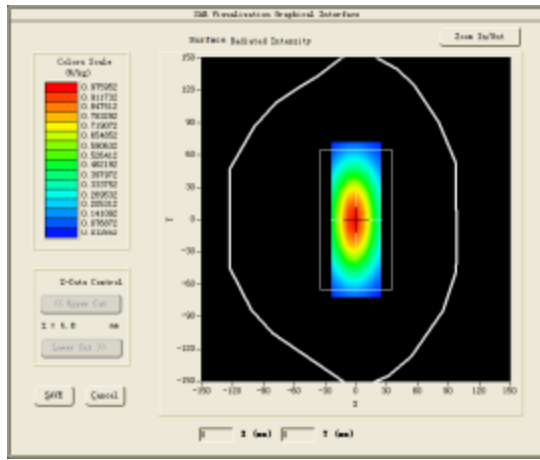
B. SAR Measurement Results

Middle Band SAR (Channel -1):

Frequency (MHz)	5200.000000
Relative permittivity (real part)	35.553182
Relative permittivity (imaginary part)	16.497414
Conductivity (S/m)	4.773841
Variation (%)	-0.070000

SURFACE SAR

VOLUME SAR

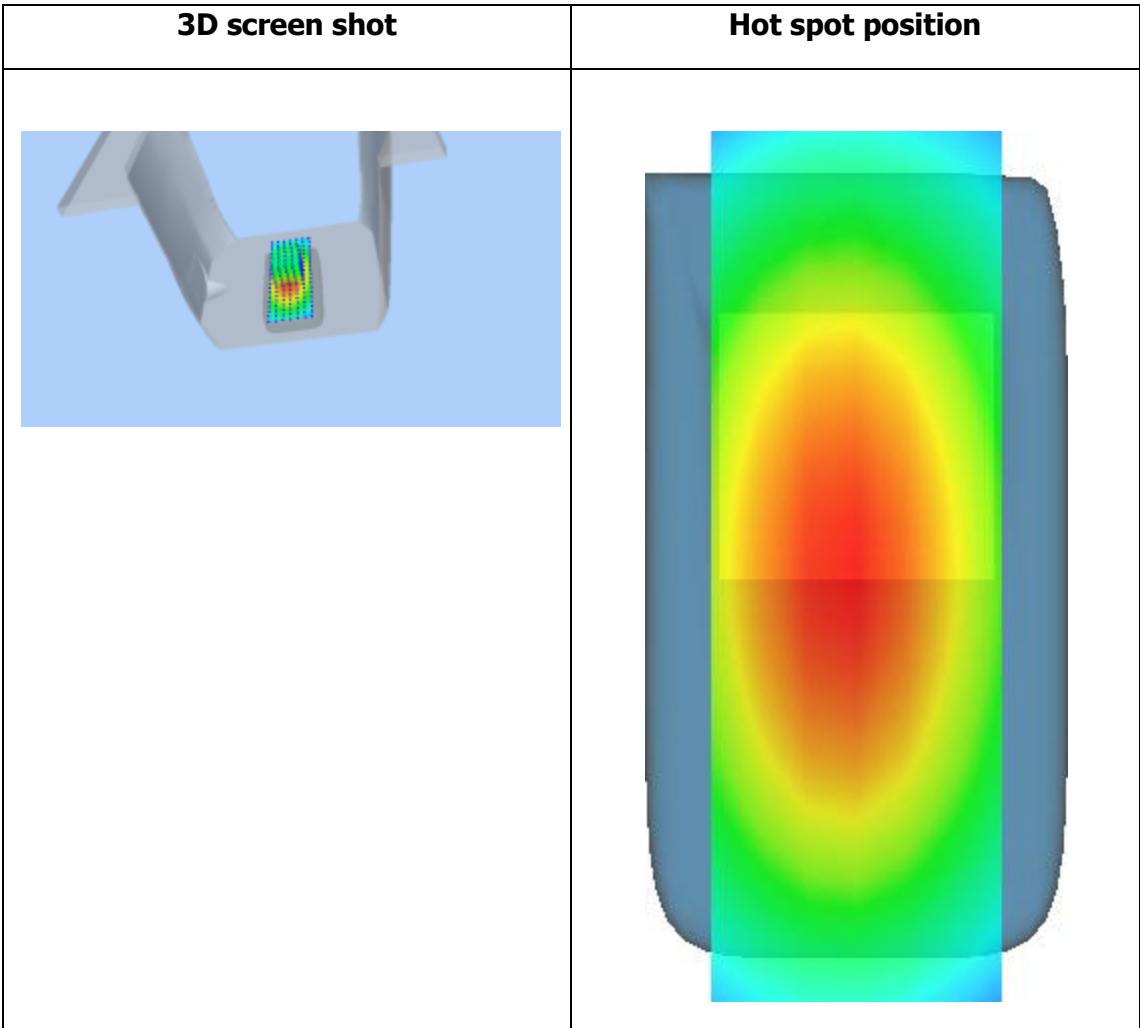
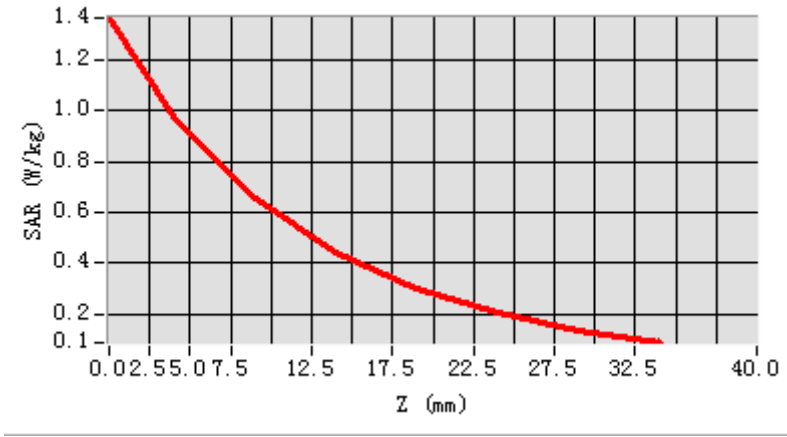


Maximum location: X=-1.00, Y=0.00

SAR Peak: 1.37 W/kg

SAR 10g (W/Kg)	56.79038
SAR 1g (W/Kg)	174.70083

Z (mm)	0.00	4.00	9.00	14.00	19.00	24.00	29.00
SAR (W/Kg)	1.3669	0.9837	0.6529	0.4412	0.2993	0.2017	0.1343



MEASUREMENT 12

BODY

Type: Validation measurement (Complete)

Date of measurement: 17/1/2017

Measurement duration: 11 minutes 32 seconds

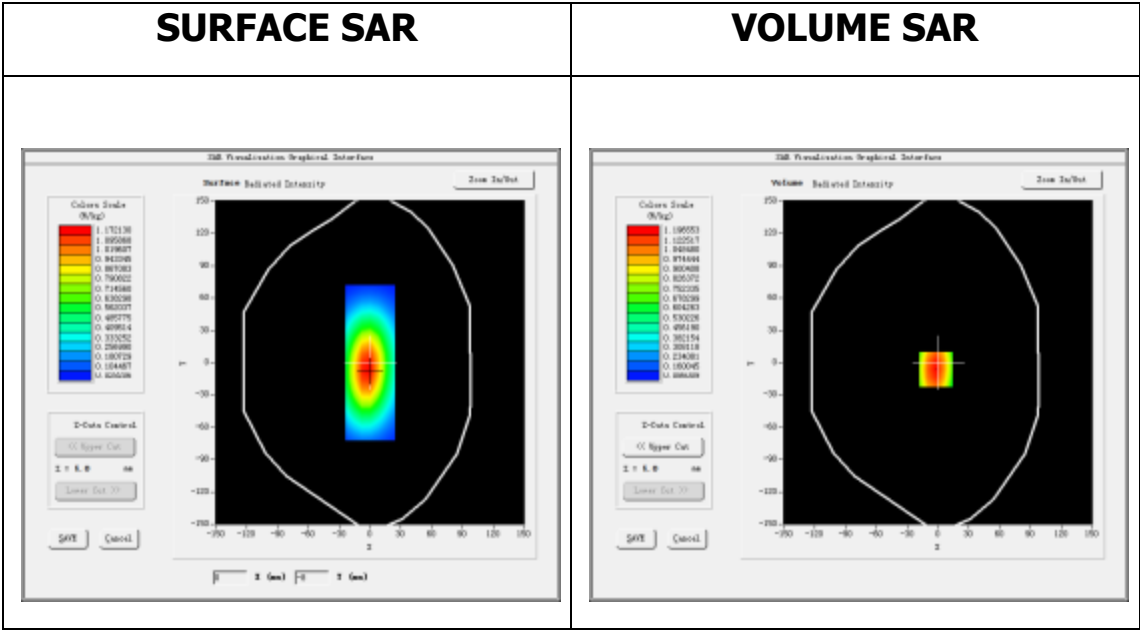
A. Experimental conditions.

<u>Area Scan</u>	<u>dx=10mm dy=10mm</u>
<u>ZoomScan</u>	<u>8x8x7,dx=4mm dy=4mm dz=2mm,Complete</u>
<u>Phantom</u>	<u>Validation plane</u>
<u>Device Position</u>	<u>Dipole</u>
<u>Band</u>	<u>CW5200</u>
<u>Channels</u>	<u>Middle</u>
<u>Signal</u>	<u>CW (Duty cycle:1:1)</u>

B. SAR Measurement Results

Middle Band SAR (Channel -1):

Frequency (MHz)	5200.000000
Relative permittivity (real part)	50.422599
Relative permittivity (imaginary part)	18.202492
Conductivity (S/m)	5.26371
Variation (%)	0.270000

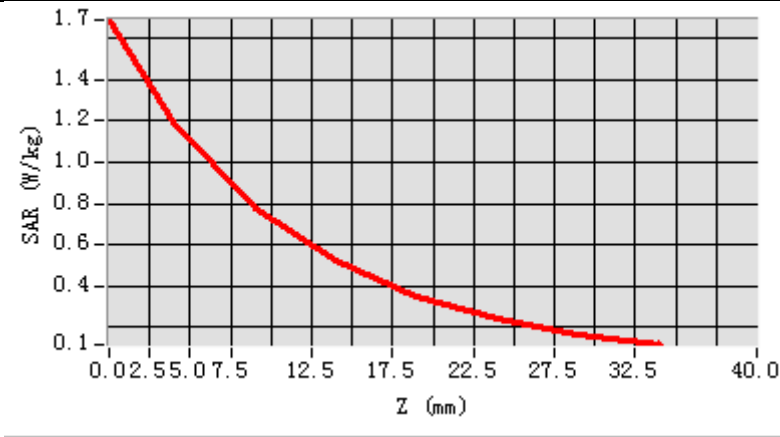


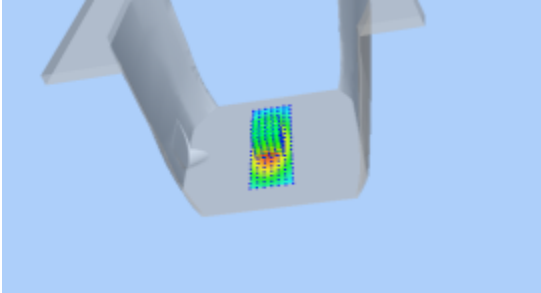
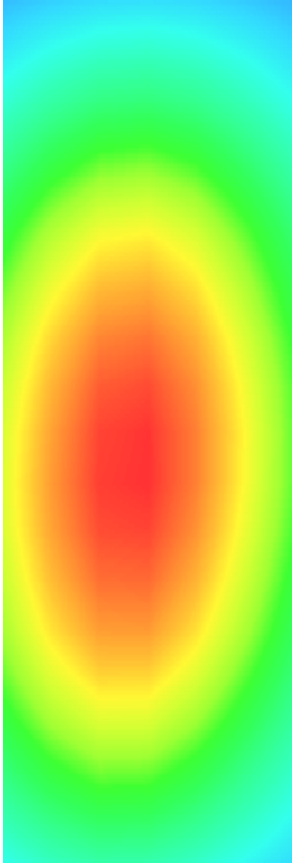
Maximum location: X=-2.00, Y=-6.00

SAR Peak: 1.69 W/kg

SAR 10g (W/Kg)	59.64065
SAR 1g (W/Kg)	167.17941

Z (mm)	0.00	4.00	9.00	14.00	19.00	24.00	29.00
SAR (W/Kg)	1.6911	1.1966	0.7784	0.5196	0.3518	0.2403	0.1660



3D screen shot	Hot spot position
 <p>A 3D perspective view of a grey, L-shaped device. A small, rectangular area on the inner surface of the L-shape is highlighted with a color gradient from blue to red, indicating a hot spot. The background is a light blue gradient.</p>	 <p>A vertical, oval-shaped heatmap visualization. The center is a bright red color, transitioning through orange and yellow to green and cyan at the edges, representing the intensity of the hot spot.</p>

MEASUREMENT 13

HEAD

Type: Validation measurement (Complete)

Date of measurement: 17/1/2017

Measurement duration: 11 minutes 36 seconds

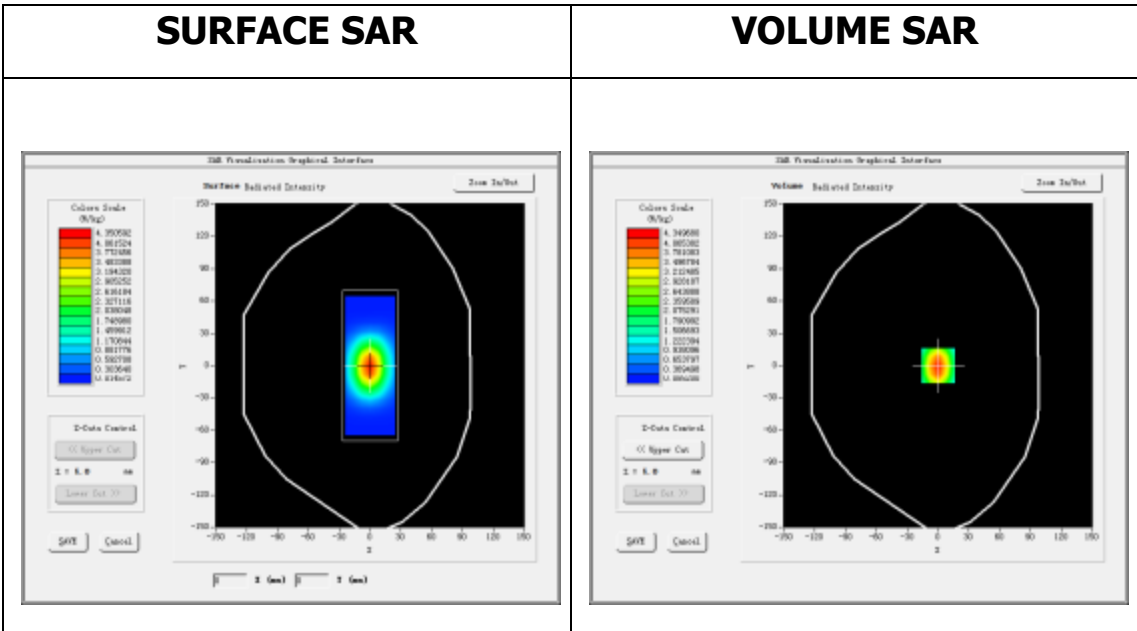
A. Experimental conditions.

<u>Area Scan</u>	<u>dx=10mm dy=10mm</u>
<u>ZoomScan</u>	<u>8x8x7,dx=4mm dy=4mm dz=2mm,Complete</u>
<u>Phantom</u>	<u>Validation plane</u>
<u>Device Position</u>	<u>Dipole</u>
<u>Band</u>	<u>CW5400</u>
<u>Channels</u>	<u>Middle</u>
<u>Signal</u>	<u>CW (Duty cycle:1:1)</u>

B. SAR Measurement Results

Middle Band SAR (Channel -1):

Frequency (MHz)	5400.000000
Relative permittivity (real part)	35.343199
Relative permittivity (imaginary part)	16.591080
Conductivity (S/m)	4.881334
Variation (%)	-0.620000

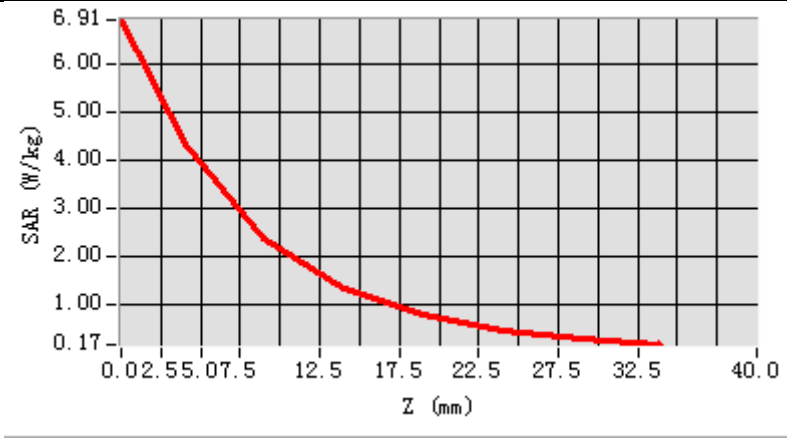


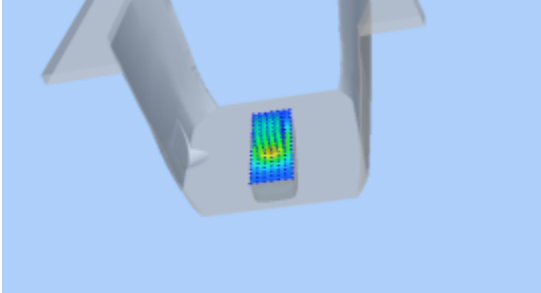
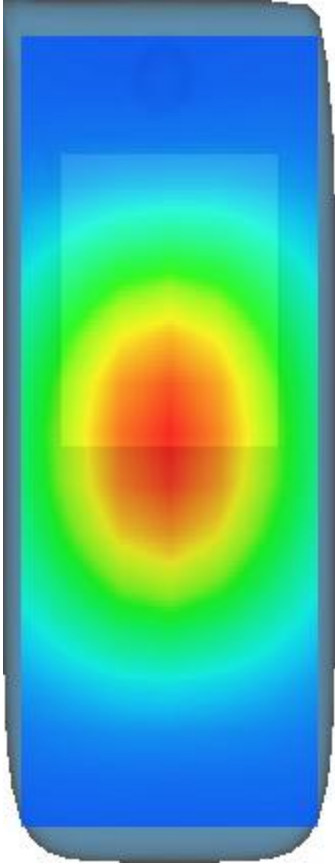
Maximum location: X=0.00, Y=0.00

SAR Peak: 6.87 W/kg

SAR 10g (W/Kg)	61.56046
SAR 1g (W/Kg)	177.95228

Z (mm)	0.00	4.00	9.00	14.00	19.00	24.00	29.00
SAR (W/Kg)	6.9135	4.3497	2.3796	1.3511	0.7818	0.4574	0.2733



3D screen shot	Hot spot position
	

MEASUREMENT 14

BODY

Type: Validation measurement (Complete)

Date of measurement: 17/1/2017

Measurement duration: 10 minutes 36 seconds

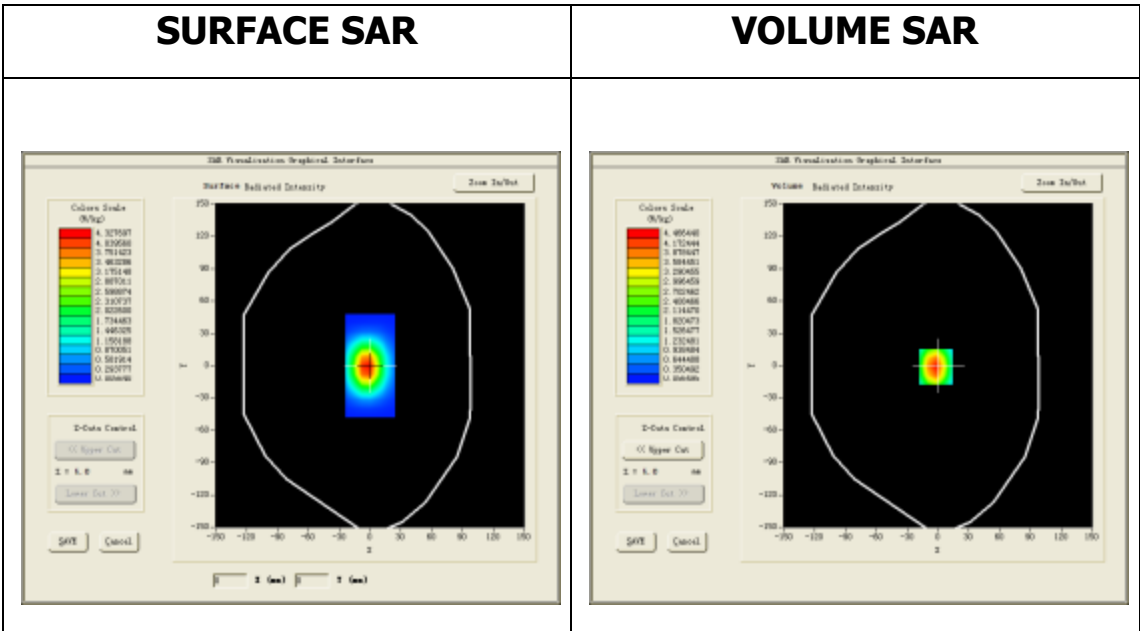
A. Experimental conditions.

<u>Area Scan</u>	<u>dx=10mm dy=10mm</u>
<u>ZoomScan</u>	<u>8x8x7,dx=4mm dy=4mm dz=2mm,Complete</u>
<u>Phantom</u>	<u>Validation plane</u>
<u>Device Position</u>	<u>Dipole</u>
<u>Band</u>	<u>CW5400</u>
<u>Channels</u>	<u>Middle</u>
<u>Signal</u>	<u>CW (Duty cycle:1:1)</u>

B. SAR Measurement Results

Middle Band SAR (Channel -1):

Frequency (MHz)	5400.000000
Relative permittivity (real part)	47.944300
Relative permittivity (imaginary part)	18.167566
Conductivity (S/m)	5.353919
Variation (%)	-0.350000

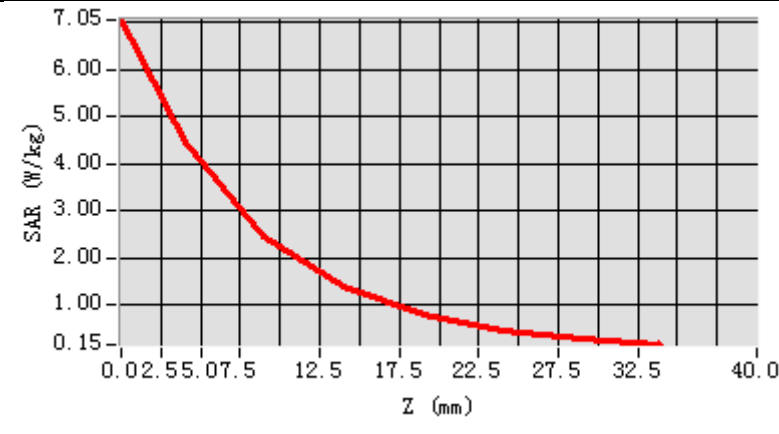


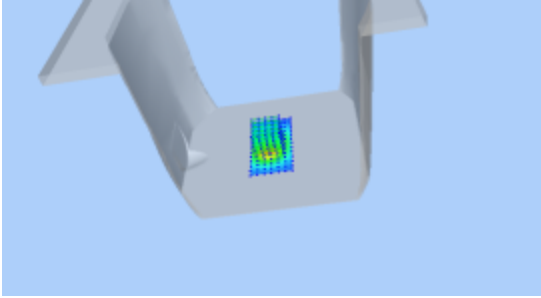
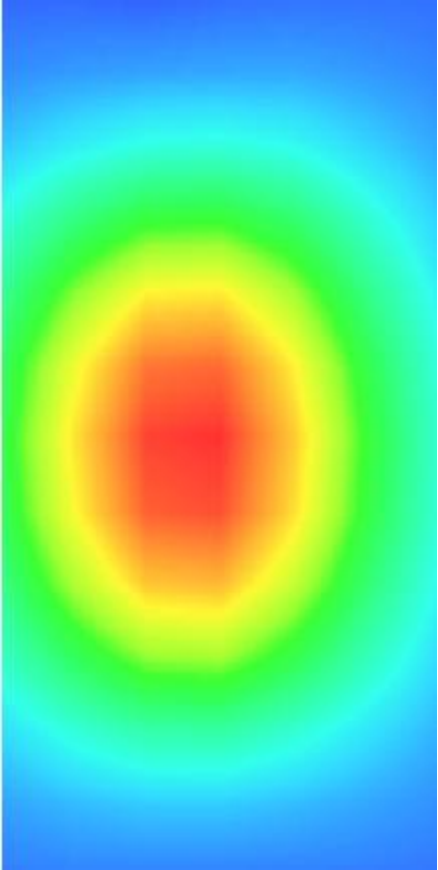
Maximum location: X=-2.00, Y=-1.00

SAR Peak: 7.04 W/kg

SAR 10g (W/Kg)	58.82132
SAR 1g (W/Kg)	165.37029

Z (mm)	0.00	4.00	9.00	14.00	19.00	24.00	29.00
SAR (W/Kg)	7.0497	4.4664	2.4603	1.3992	0.7963	0.4560	0.2601



3D screen shot	Hot spot position
	

MEASUREMENT 15

HEAD

Type: Validation measurement (Complete)

Date of measurement: 17/1/2017

Measurement duration: 9 minutes 59 seconds

A. Experimental conditions.

<u>Area Scan</u>	<u>dx=10mm dy=10mm</u>
<u>ZoomScan</u>	<u>8x8x7,dx=4mm dy=4mm dz=2mm,Complete</u>
<u>Phantom</u>	<u>Validation plane</u>
<u>Device Position</u>	<u>Dipole</u>
<u>Band</u>	<u>CW5800</u>
<u>Channels</u>	<u>Middle</u>
<u>Signal</u>	<u>CW (Duty cycle:1:1)</u>

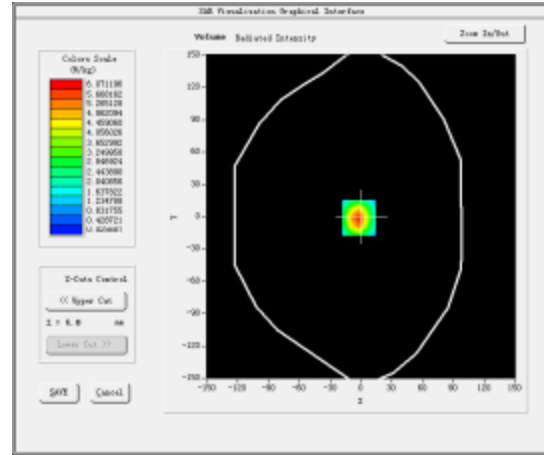
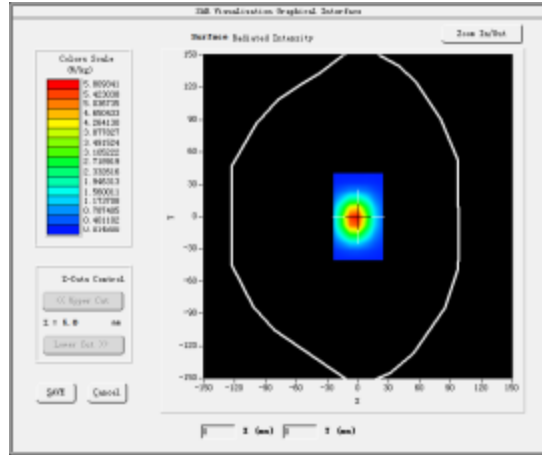
B. SAR Measurement Results

Middle Band SAR (Channel -1):

Frequency (MHz)	5800.000000
Relative permittivity (real part)	34.225599
Relative permittivity (imaginary part)	16.160852
Conductivity (S/m)	5.211844
Variation (%)	0.050000

SURFACE SAR

VOLUME SAR

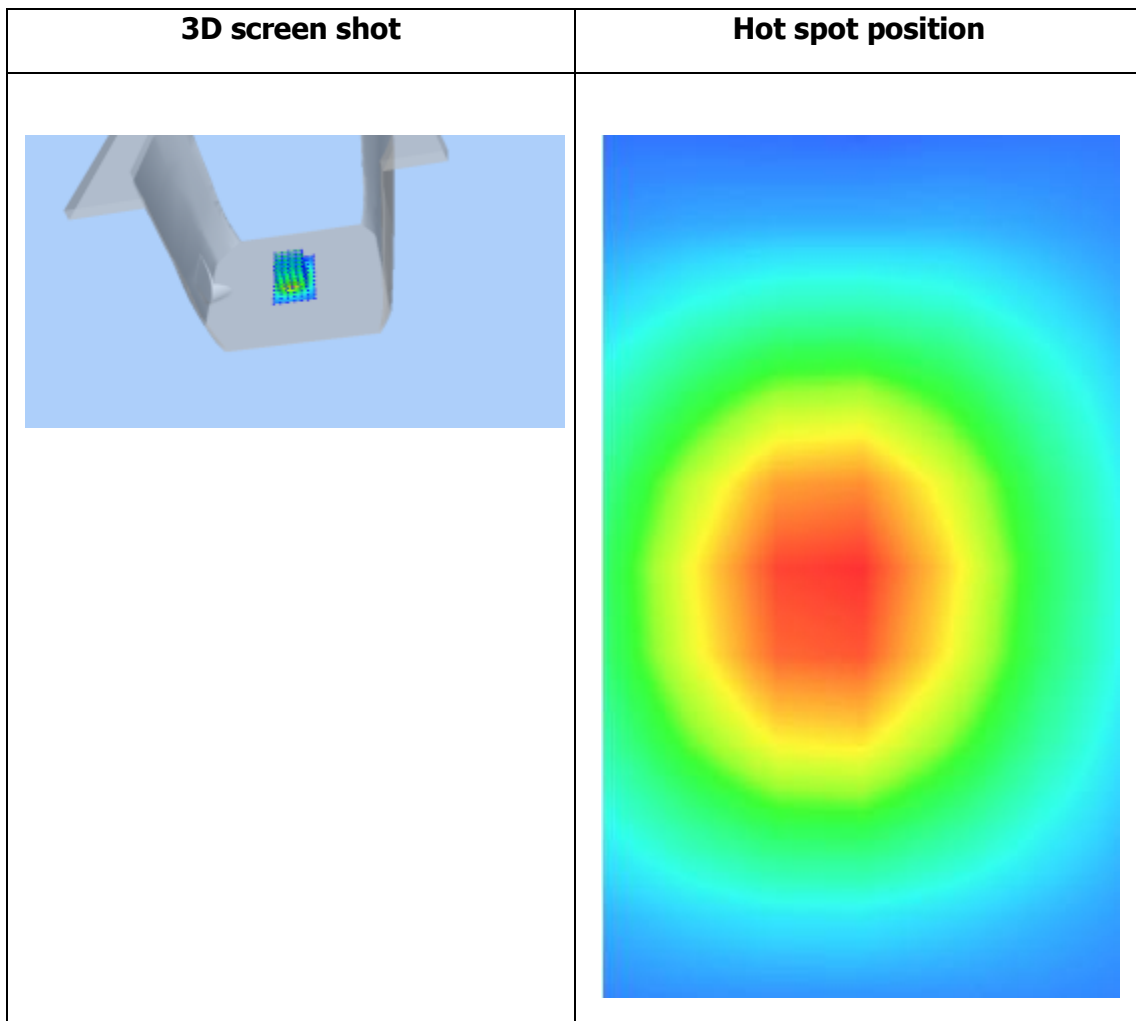
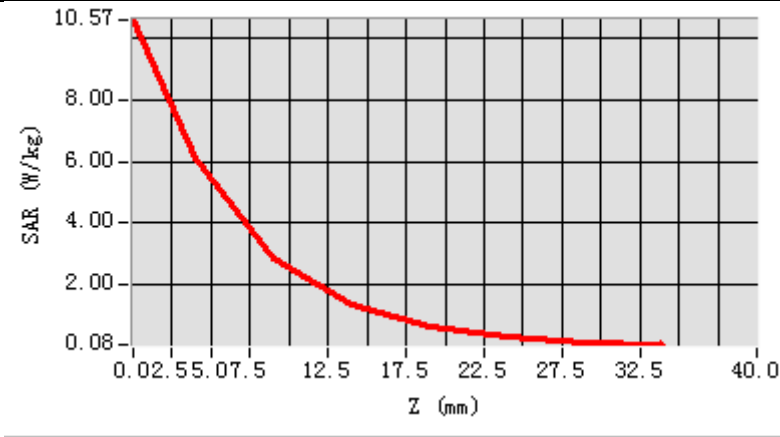


Maximum location: X=-2.00, Y=-1.00

SAR Peak: 10.54 W/kg

SAR 10g (W/Kg)	63.34043
SAR 1g (W/Kg)	185.19149

Z (mm)	0.00	4.00	9.00	14.00	19.00	24.00	29.00
SAR (W/Kg)	10.5655	6.0712	2.8292	1.3565	0.6515	0.3180	0.1553



MEASUREMENT 16

BODY

Type: Validation measurement (Complete)

Date of measurement: 17/1/2017

Measurement duration: 10 minutes 36 seconds

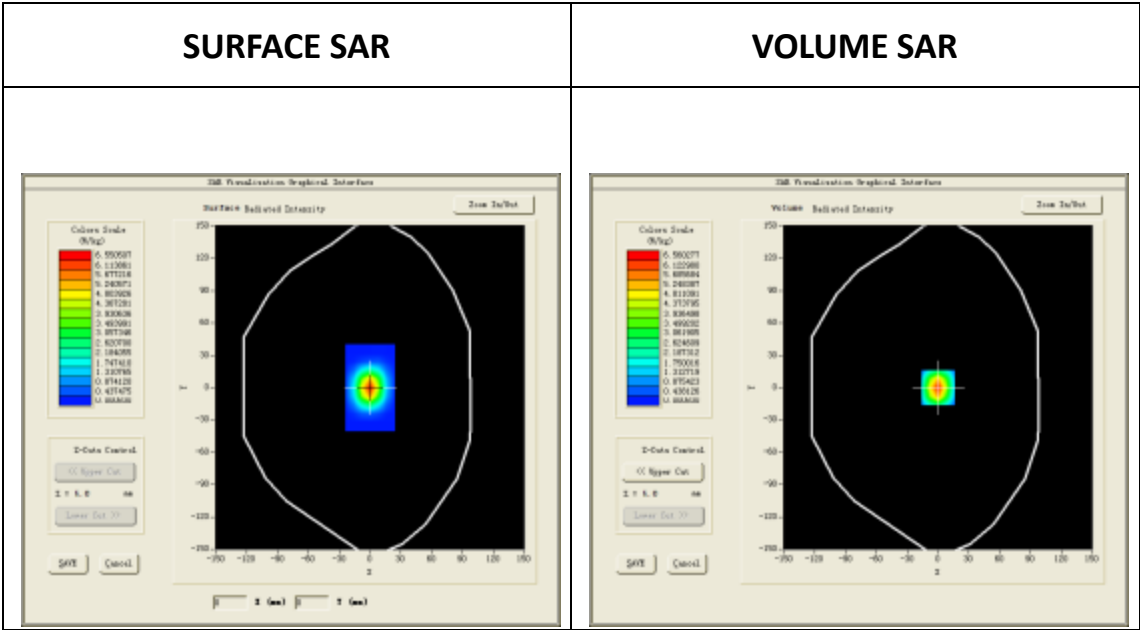
A. Experimental conditions.

<u>Area Scan</u>	<u>dx=10mm dy=10mm</u>
<u>ZoomScan</u>	<u>8x8x7,dx=4mm dy=4mm</u> <u>dz=2mm,Complete</u>
<u>Phantom</u>	<u>Validation plane</u>
<u>Device Position</u>	<u>Dipole</u>
<u>Band</u>	<u>CW5800</u>
<u>Channels</u>	<u>Middle</u>
<u>Signal</u>	<u>CW (Duty cycle:1:1)</u>

B. SAR Measurement Results

Middle Band SAR (Channel -1):

Frequency (MHz)	5800.000000
Relative permittivity (real part)	48.090699
Relative permittivity (imaginary part)	19.043921
Conductivity (S/m)	6.14163
Variation (%)	0.010000

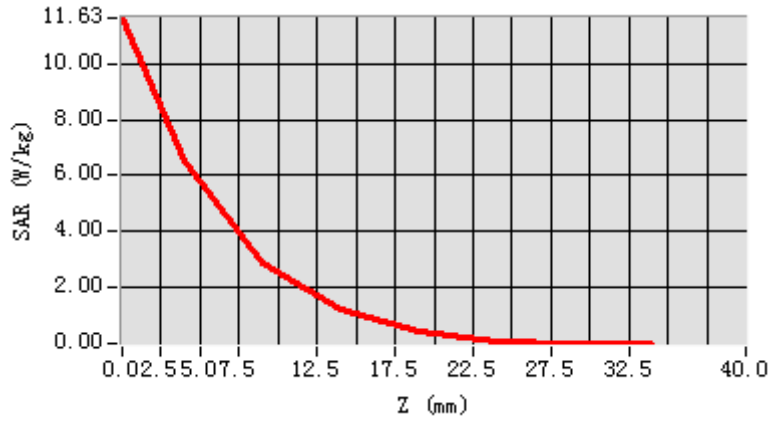


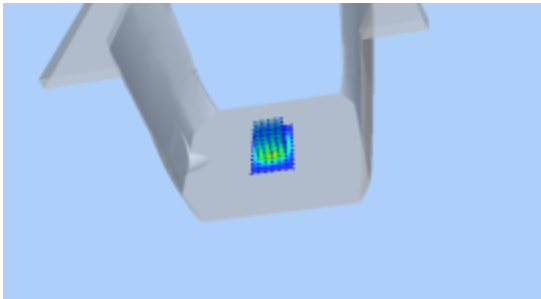
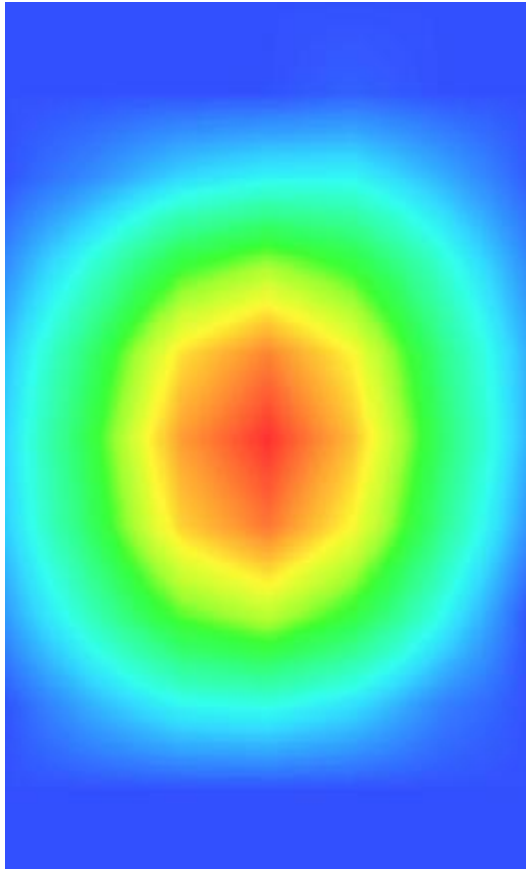
Maximum location: X=0.00, Y=0.00

SAR Peak: 11.49 W/kg

SAR 10g (W/Kg)	60.79996
SAR 1g (W/Kg)	179.65831

Z (mm)	0.00	4.00	9.00	14.00	19.00	24.00	29.00
SAR (W/Kg)	11.6340	6.5603	2.8797	1.2004	0.4226	0.1066	0.0008



3D screen shot	Hot spot position
 <p>A 3D perspective view of a grey, L-shaped device. A small rectangular area on the inner surface of the 'L' is highlighted with a color gradient from blue to red, indicating the location of the hot spot.</p>	 <p>A 2D heatmap visualization of the hot spot. It shows a central red region that transitions through yellow and green to a blue outer boundary, representing the intensity distribution of the electromagnetic field.</p>