

Test Plot186#: LTE Band 66_Body Left_50%RB_Middle**DUT: Mobile Phone; Type: CL9 ; Serial: 2DB3-1**

Communication System: Generic FDD-LTE (0); Frequency: 1745 MHz;Duty Cycle: 1:1
Medium parameters used: $f=1745$ MHz; $\sigma = 1.339$ S/m; $\epsilon_r = 40.983$; $\rho = 1000$ kg/m³ ;
Phantom section: Flat Section

DASY5 Configuration:

- Probe: ES3DV3 - SN3157; ConvF(5.38, 5.38, 5.38) @1745 MHz; Calibrated: 2023/4/10;
- Sensor-Surface: 3mm (Mechanical Surface Detection)
- Electronics: DAE4 Sn1493;Calibrated: 2023/3/17
- Phantom: Twin SAM; Type: Twin SAM V5.0; Serial: TP:1412
- Measurement SW: DASY52, Version 52.10 (2); SEMCAD X Version 14.6.12 (7470)

Area Scan (5x14x1):Measurement grid: dx=15mm, dy=15mm

Maximum value of SAR (interpolated) = 0.152 W/kg

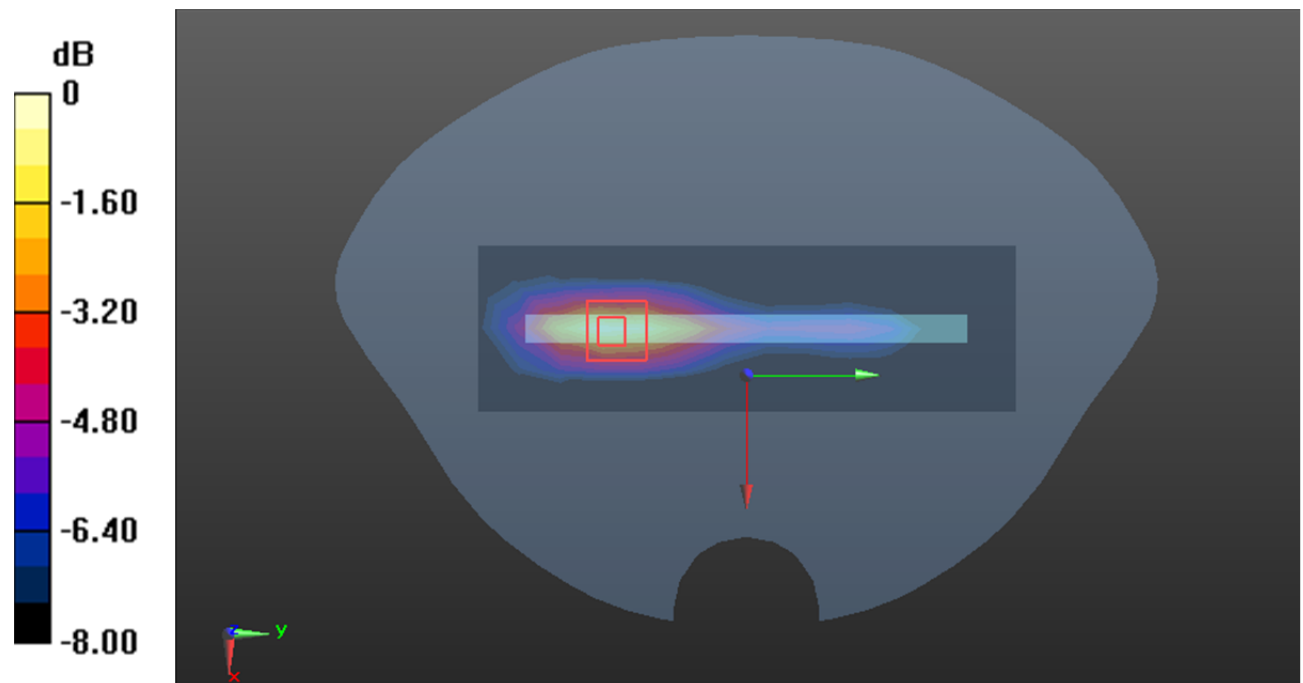
Zoom Scan (5x5x7)/Cube 0:Measurement grid: dx=8mm, dy=8mm, dz=5mm

Reference Value = 6.316 V/m; Power Drift = 0.02 dB

Peak SAR (extrapolated) = 0.223 W/kg

SAR(1 g) = 0.124 W/kg; SAR(10 g) = 0.066 W/kg

Maximum value of SAR (measured) = 0.155 W/kg



0 dB = 0.155 W/kg = -8.10 dBW/kg

Test Plot187#: LTE Band 66_Body Bottom_1RB_Middle**DUT: Mobile Phone; Type: CL9 ; Serial: 2DB3-1**

Communication System: Generic FDD-LTE (0); Frequency: 1745 MHz;Duty Cycle: 1:1
Medium parameters used: $f=1745$ MHz; $\sigma = 1.339$ S/m; $\epsilon_r = 40.983$; $\rho = 1000$ kg/m³ ;
Phantom section: Flat Section

DASY5 Configuration:

- Probe: ES3DV3 - SN3157; ConvF(5.38, 5.38, 5.38) @1745 MHz; Calibrated: 2023/4/10;
- Sensor-Surface: 3mm (Mechanical Surface Detection)
- Electronics: DAE4 Sn1493;Calibrated: 2023/3/17
- Phantom: Twin SAM; Type: Twin SAM V5.0; Serial: TP:1412
- Measurement SW: DASY52, Version 52.10 (2); SEMCAD X Version 14.6.12 (7470)

Area Scan (5x9x1):Measurement grid: dx=15mm, dy=15mm

Maximum value of SAR (interpolated) = 0.530 W/kg

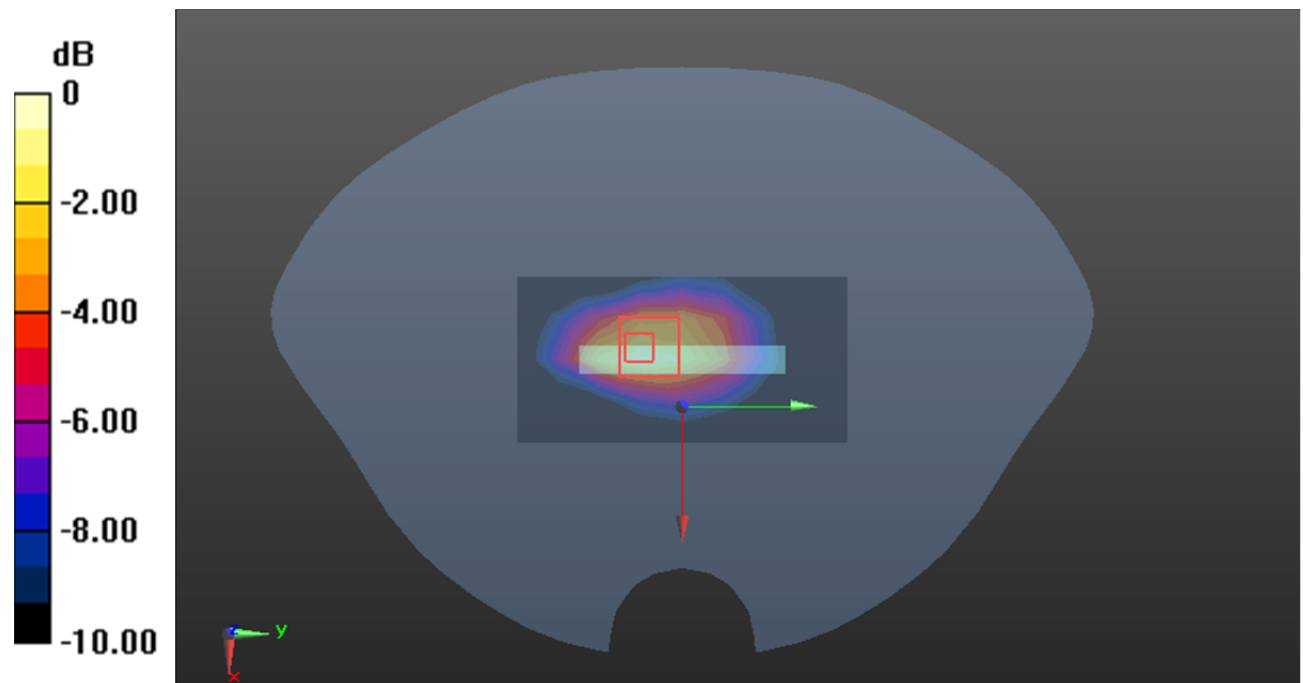
Zoom Scan (5x5x7)/Cube 0:Measurement grid: dx=8mm, dy=8mm, dz=5mm

Reference Value = 18.59 V/m; Power Drift = -0.11 dB

Peak SAR (extrapolated) = 0.845 W/kg

SAR(1 g) = 0.473 W/kg; SAR(10 g) = 0.257 W/kg

Maximum value of SAR (measured) = 0.588 W/kg



0 dB = 0.588 W/kg = -2.31 dBW/kg

Test Plot188#: LTE Band 66_Body Bottom_50%RB_Middle**DUT: Mobile Phone; Type: CL9 ; Serial: 2DB3-1**

Communication System: Generic FDD-LTE (0); Frequency: 1745 MHz;Duty Cycle: 1:1
Medium parameters used: $f=1745$ MHz; $\sigma = 1.339$ S/m; $\epsilon_r = 40.983$; $\rho = 1000$ kg/m³ ;
Phantom section: Flat Section

DASY5 Configuration:

- Probe: ES3DV3 - SN3157; ConvF(5.38, 5.38, 5.38) @1745 MHz; Calibrated: 2023/4/10;
- Sensor-Surface: 3mm (Mechanical Surface Detection)
- Electronics: DAE4 Sn1493;Calibrated: 2023/3/17
- Phantom: Twin SAM; Type: Twin SAM V5.0; Serial: TP:1412
- Measurement SW: DASY52, Version 52.10 (2); SEMCAD X Version 14.6.12 (7470)

Area Scan (5x9x1):Measurement grid: dx=15mm, dy=15mm

Maximum value of SAR (interpolated) = 0.431 W/kg

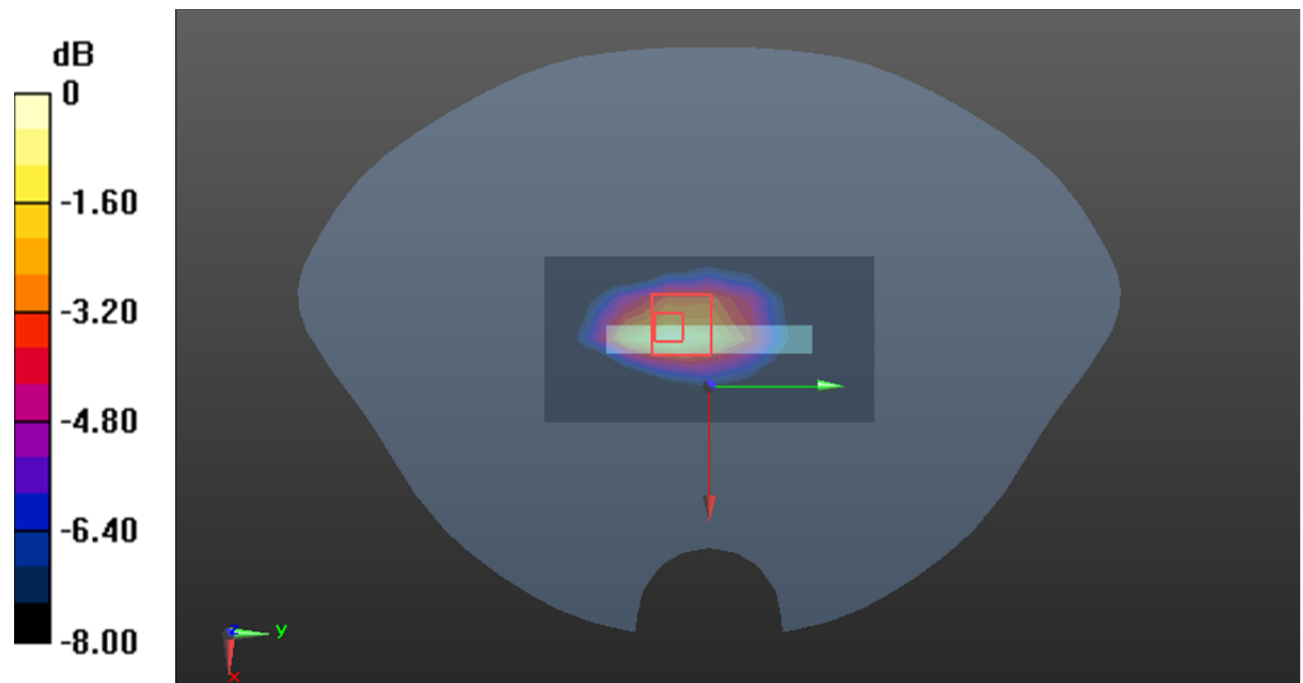
Zoom Scan (5x5x7)/Cube 0:Measurement grid: dx=8mm, dy=8mm, dz=5mm

Reference Value = 16.79 V/m; Power Drift = 0.07 dB

Peak SAR (extrapolated) = 0.673 W/kg

SAR(1 g) = 0.386 W/kg; SAR(10 g) = 0.214 W/kg

Maximum value of SAR (measured) = 0.481 W/kg



0 dB = 0.481 W/kg = -3.18 dBW/kg

Test Plot 189#: 5G NR n5 1RB Mid_ Head Left Cheek**DUT: Mobile Phone; Type: CL9 ; Serial: 2DB3-1**

Communication System: UID 0, Generic FDD-FR1 n 5 (0); Frequency: 836.5 MHz; Duty Cycle: 1:1

Medium parameters used: $f = 836.5$ MHz; $\sigma = 0.884$ S/m; $\epsilon_r = 42.301$; $\rho = 1000$ kg/m³

Phantom section: Left Section

DASY5 Configuration:

- Probe: ES3DV3 - SN3157; ConvF(6.48, 6.48, 6.48) @ 836.5 MHz; Calibrated: 2023/4/10;
- Sensor-Surface: 3mm (Mechanical Surface Detection)
- Electronics: DAE4 Sn1493; Calibrated: 2023/3/17
- Phantom: Twin SAM; Type: Twin SAM V5.0; Serial: TP:1412
- Measurement SW: DASY52, Version 52.10 (2); SEMCAD X Version 14.6.12 (7470)

Area Scan (8x10x1): Measurement grid: dx=15mm, dy=15mm

Maximum value of SAR (measured) = 0.0450 W/kg

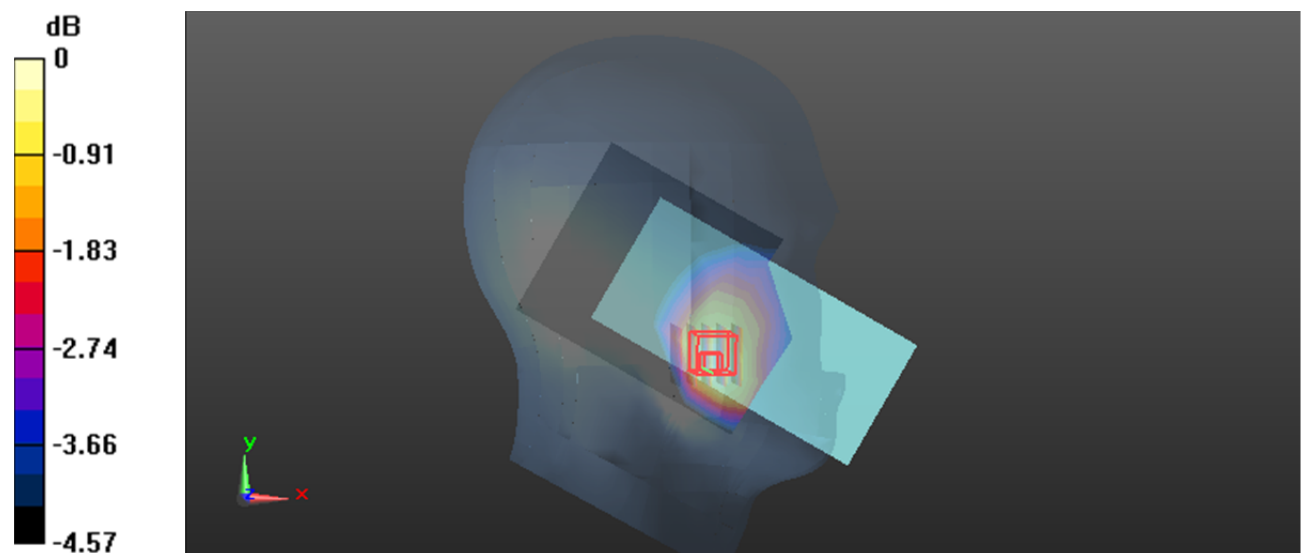
Zoom Scan (5x5x7)/Cube 0: Measurement grid: dx=8mm, dy=8mm, dz=5mm

Reference Value = 1.931 V/m; Power Drift = 0.19 dB

Peak SAR (extrapolated) = 0.0480 W/kg

SAR(1 g) = 0.037 W/kg; SAR(10 g) = 0.028 W/kg

Maximum value of SAR (measured) = 0.0428 W/kg



0 dB = 0.0428 W/kg = -13.69 dBW/kg

Test Plot 190#: 5G NR n5 50%RB Mid_ Head Left Cheek**DUT: Mobile Phone; Type: CL9 ; Serial: 2DB3-1**

Communication System: UID 0, Generic FDD-FR1 n 5 (0); Frequency: 836.5 MHz; Duty Cycle: 1:1

Medium parameters used: $f = 836.5$ MHz; $\sigma = 0.884$ S/m; $\epsilon_r = 42.301$; $\rho = 1000$ kg/m³

Phantom section: Left Section

DASY5 Configuration:

- Probe: ES3DV3 - SN3157; ConvF(6.48, 6.48, 6.48) @ 836.5 MHz; Calibrated: 2023/4/10;
- Sensor-Surface: 3mm (Mechanical Surface Detection)
- Electronics: DAE4 Sn1493; Calibrated: 2023/3/17
- Phantom: Twin SAM; Type: Twin SAM V5.0; Serial: TP:1412
- Measurement SW: DASY52, Version 52.10 (2); SEMCAD X Version 14.6.12 (7470)

Area Scan (8x10x1): Measurement grid: dx=15mm, dy=15mm

Maximum value of SAR (measured) = 0.0439 W/kg

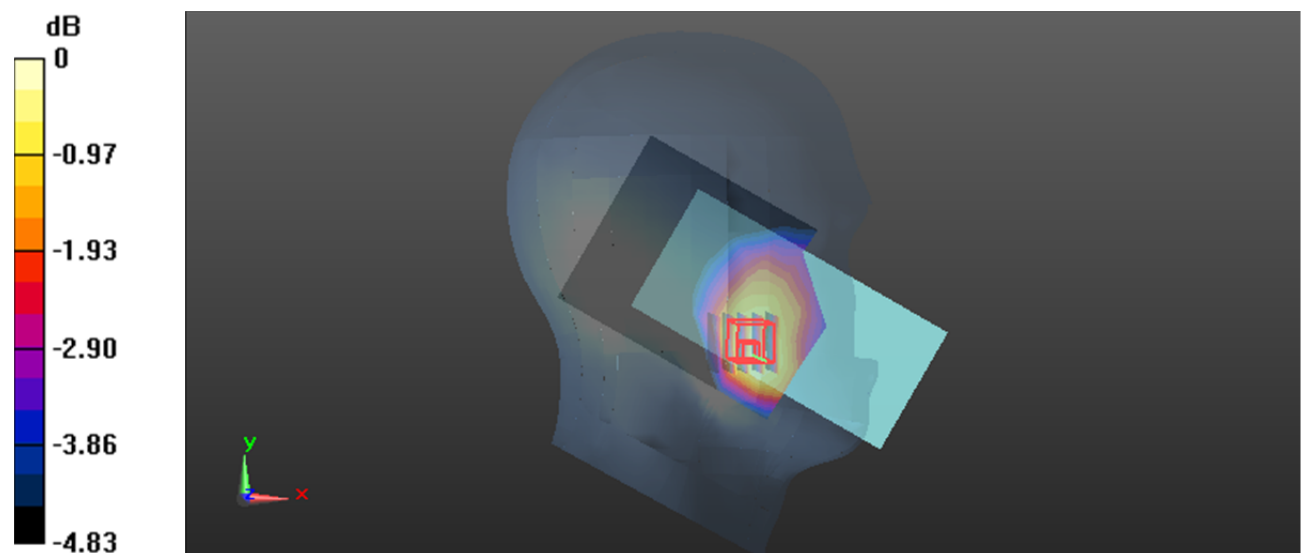
Zoom Scan (5x5x7)/Cube 0: Measurement grid: dx=8mm, dy=8mm, dz=5mm

Reference Value = 1.917 V/m; Power Drift = 0.12 dB

Peak SAR (extrapolated) = 0.0470 W/kg

SAR(1 g) = 0.037 W/kg; SAR(10 g) = 0.029 W/kg

Maximum value of SAR (measured) = 0.0421 W/kg



0 dB = 0.0421 W/kg = -13.76 dBW/kg

Test Plot 191#: 5G NR n5 1RB Mid_ Head Left Tilt**DUT: Mobile Phone; Type: CL9 ; Serial: 2DB3-1**

Communication System: UID 0, Generic FDD-FR1 n 5 (0); Frequency: 836.5 MHz; Duty Cycle: 1:1

Medium parameters used: $f = 836.5$ MHz; $\sigma = 0.884$ S/m; $\epsilon_r = 42.301$; $\rho = 1000$ kg/m³

Phantom section: Left Section

DASY5 Configuration:

- Probe: ES3DV3 - SN3157; ConvF(6.48, 6.48, 6.48) @ 836.5 MHz; Calibrated: 2023/4/10;
- Sensor-Surface: 3mm (Mechanical Surface Detection)
- Electronics: DAE4 Sn1493; Calibrated: 2023/3/17
- Phantom: Twin SAM; Type: Twin SAM V5.0; Serial: TP:1412
- Measurement SW: DASY52, Version 52.10 (2); SEMCAD X Version 14.6.12 (7470)

Area Scan (8x10x1): Measurement grid: dx=15mm, dy=15mm

Maximum value of SAR (measured) = 0.0204 W/kg

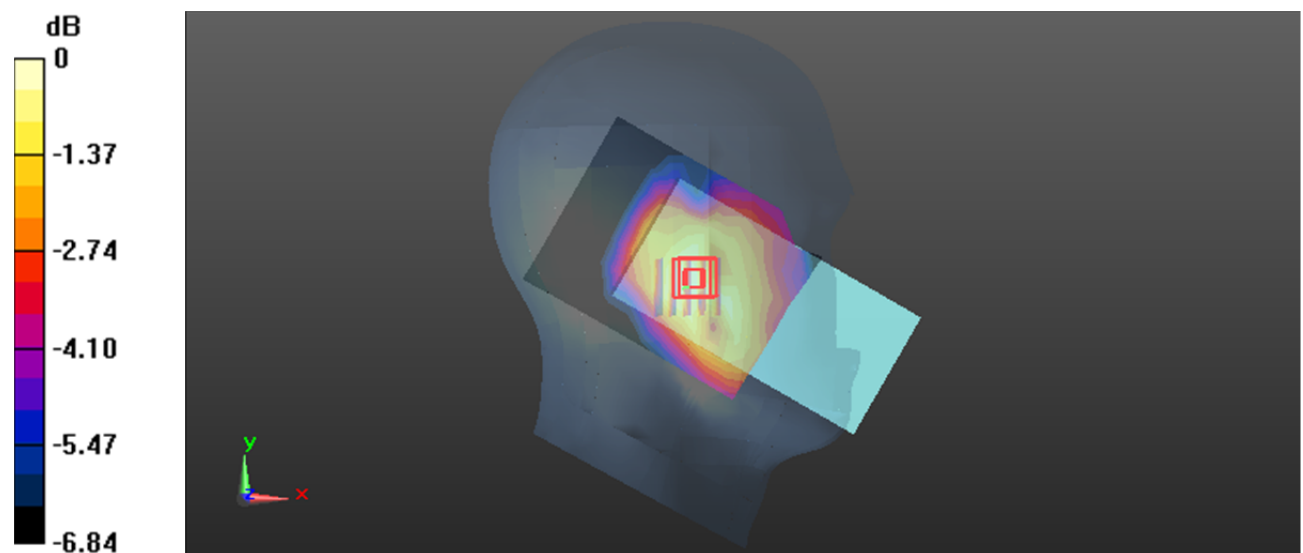
Zoom Scan (5x5x7)/Cube 0: Measurement grid: dx=8mm, dy=8mm, dz=5mm

Reference Value = 3.004 V/m; Power Drift = 0.17 dB

Peak SAR (extrapolated) = 0.0210 W/kg

SAR(1 g) = 0.018 W/kg; SAR(10 g) = 0.014 W/kg

Maximum value of SAR (measured) = 0.0208 W/kg



0 dB = 0.0208 W/kg = -16.82 dBW/kg

Test Plot 192#: 5G NR n5 50%RB Mid_ Head Left Tilt**DUT: Mobile Phone; Type: CL9 ; Serial: 2DB3-1**

Communication System: UID 0, Generic FDD-FR1 n 5 (0); Frequency: 836.5 MHz;Duty Cycle: 1:1

Medium parameters used: $f = 836.5$ MHz; $\sigma = 0.884$ S/m; $\epsilon_r = 42.301$; $\rho = 1000$ kg/m³

Phantom section: Left Section

DASY5 Configuration:

- Probe: ES3DV3 - SN3157; ConvF(6.48, 6.48, 6.48) @ 836.5 MHz; Calibrated: 2023/4/10;
- Sensor-Surface: 3mm (Mechanical Surface Detection)
- Electronics: DAE4 Sn1493; Calibrated: 2023/3/17
- Phantom: Twin SAM; Type: Twin SAM V5.0; Serial: TP:1412
- Measurement SW: DASY52, Version 52.10 (2); SEMCAD X Version 14.6.12 (7470)

Area Scan (8x10x1): Measurement grid: dx=15mm, dy=15mm

Maximum value of SAR (measured) = 0.0195 W/kg

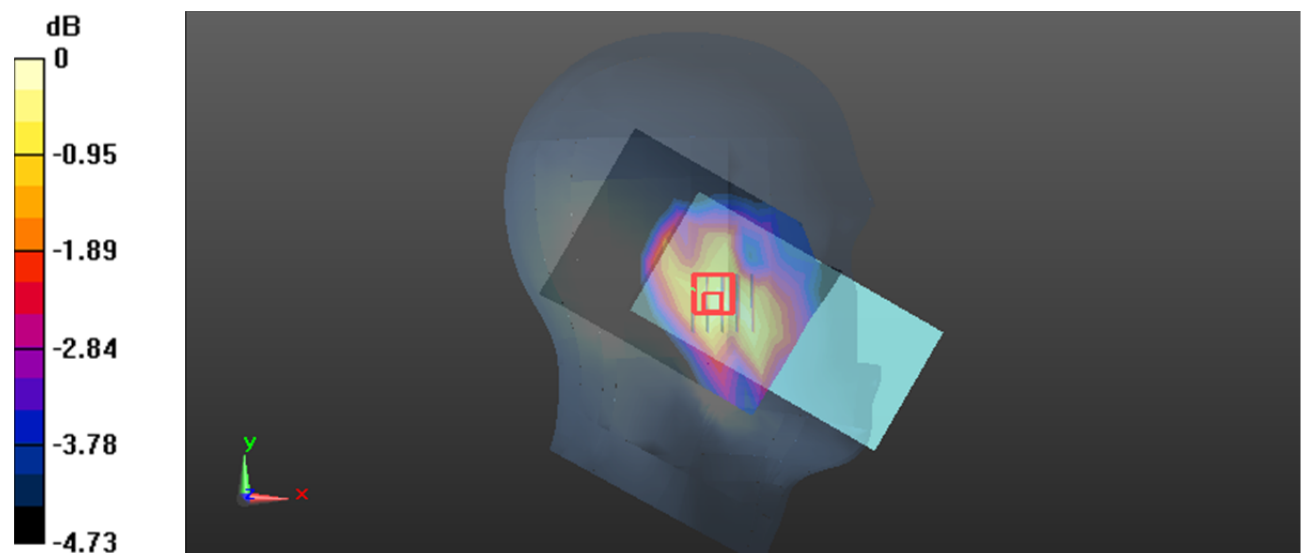
Zoom Scan (5x5x7)/Cube 0: Measurement grid: dx=8mm, dy=8mm, dz=5mm

Reference Value = 2.826 V/m; Power Drift = 0.16 dB

Peak SAR (extrapolated) = 0.0230 W/kg

SAR(1 g) = 0.017 W/kg; SAR(10 g) = 0.013 W/kg

Maximum value of SAR (measured) = 0.0205 W/kg



0 dB = 0.0205 W/kg = -16.88 dBW/kg

Test Plot 193#: 5G NR n5 1RB Mid_ Head Right Cheek**DUT: Mobile Phone; Type: CL9 ; Serial: 2DB3-1**

Communication System: UID 0, Generic FDD-FR1 n 5 (0); Frequency: 836.5 MHz; Duty Cycle: 1:1

Medium parameters used: $f = 836.5$ MHz; $\sigma = 0.884$ S/m; $\epsilon_r = 42.301$; $\rho = 1000$ kg/m³

Phantom section: Right Section

DASY5 Configuration:

- Probe: ES3DV3 - SN3157; ConvF(6.48, 6.48, 6.48) @ 836.5 MHz; Calibrated: 2023/4/10;
- Sensor-Surface: 3mm (Mechanical Surface Detection)
- Electronics: DAE4 Sn1493; Calibrated: 2023/3/17
- Phantom: Twin SAM; Type: Twin SAM V5.0; Serial: TP:1412
- Measurement SW: DASY52, Version 52.10 (2); SEMCAD X Version 14.6.12 (7470)

Area Scan (8x10x1): Measurement grid: dx=15mm, dy=15mm

Maximum value of SAR (measured) = 0.0644 W/kg

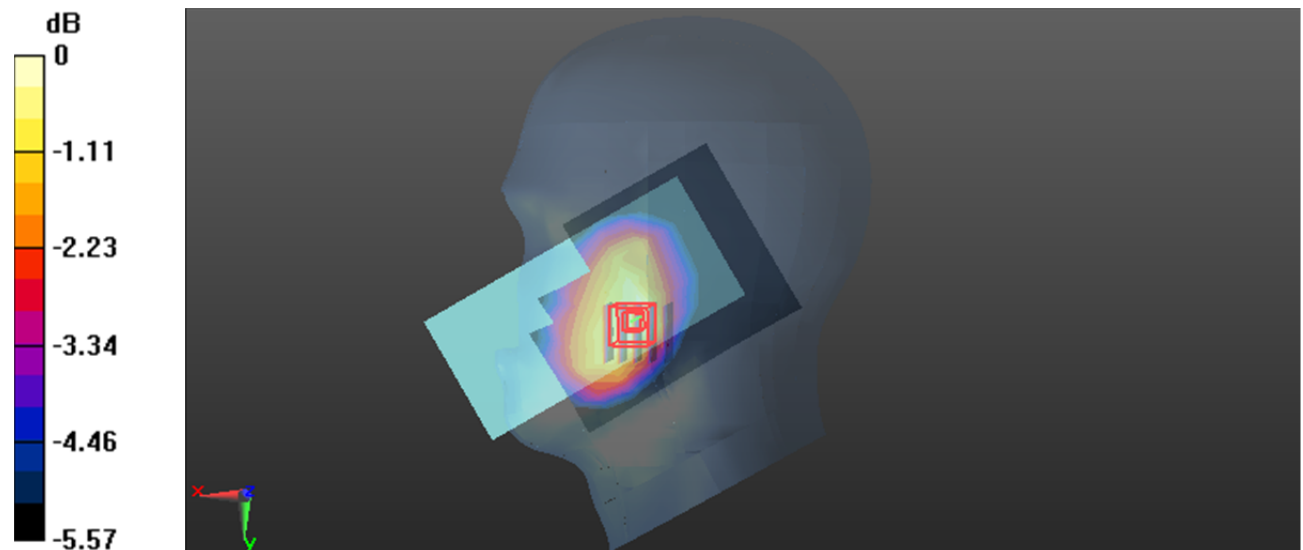
Zoom Scan (5x5x7)/Cube 0: Measurement grid: dx=8mm, dy=8mm, dz=5mm

Reference Value = 2.116 V/m; Power Drift = 0.18 dB

Peak SAR (extrapolated) = 0.0760 W/kg

SAR(1 g) = 0.054 W/kg; SAR(10 g) = 0.040 W/kg

Maximum value of SAR (measured) = 0.0674 W/kg



0 dB = 0.0674 W/kg = -11.71 dBW/kg

Test Plot 194#: 5G NR n5 50%RB Mid_ Head Right Cheek**DUT: Mobile Phone; Type: CL9 ; Serial: 2DB3-1**

Communication System: UID 0, Generic FDD-FR1 n 5 (0); Frequency: 836.5 MHz;Duty Cycle: 1:1

Medium parameters used: $f = 836.5$ MHz; $\sigma = 0.884$ S/m; $\epsilon_r = 42.301$; $\rho = 1000$ kg/m³

Phantom section: Right Section

DASY5 Configuration:

- Probe: ES3DV3 - SN3157; ConvF(6.48, 6.48, 6.48) @ 836.5 MHz; Calibrated: 2023/4/10;
- Sensor-Surface: 3mm (Mechanical Surface Detection)
- Electronics: DAE4 Sn1493; Calibrated: 2023/3/17
- Phantom: Twin SAM; Type: Twin SAM V5.0; Serial: TP:1412
- Measurement SW: DASY52, Version 52.10 (2); SEMCAD X Version 14.6.12 (7470)

Area Scan (8x10x1): Measurement grid: dx=15mm, dy=15mm

Maximum value of SAR (measured) = 0.0706 W/kg

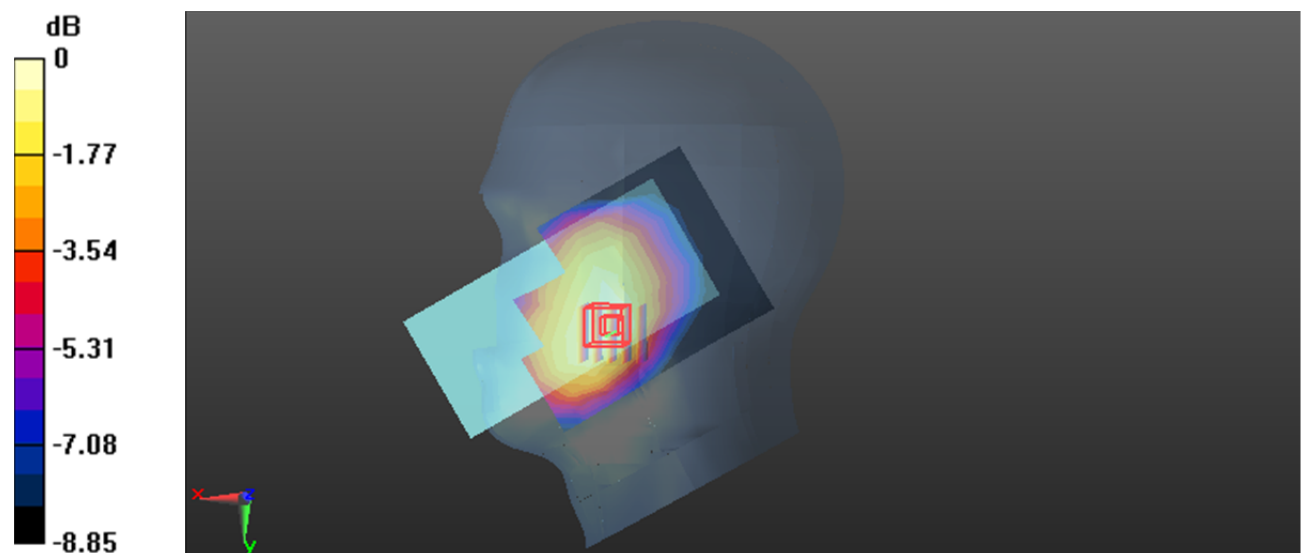
Zoom Scan (5x5x7)/Cube 0: Measurement grid: dx=8mm, dy=8mm, dz=5mm

Reference Value = 2.494 V/m; Power Drift = 0.15 dB

Peak SAR (extrapolated) = 0.0790 W/kg

SAR(1 g) = 0.057 W/kg; SAR(10 g) = 0.042 W/kg

Maximum value of SAR (measured) = 0.0698 W/kg



0 dB = 0.0698 W/kg = -11.56 dBW/kg

Test Plot 195#: 5G NR n5 1RB Mid_ Head Right Tilt**DUT: Mobile Phone; Type: CL9 ; Serial: 2DB3-1**

Communication System: UID 0, Generic FDD-FR1 n 5 (0); Frequency: 836.5 MHz;Duty Cycle: 1:1

Medium parameters used: $f = 836.5$ MHz; $\sigma = 0.884$ S/m; $\epsilon_r = 42.301$; $\rho = 1000$ kg/m³

Phantom section: Right Section

DASY5 Configuration:

- Probe: ES3DV3 - SN3157; ConvF(6.48, 6.48, 6.48) @ 836.5 MHz; Calibrated: 2023/4/10;
- Sensor-Surface: 3mm (Mechanical Surface Detection)
- Electronics: DAE4 Sn1493; Calibrated: 2023/3/17
- Phantom: Twin SAM; Type: Twin SAM V5.0; Serial: TP:1412
- Measurement SW: DASY52, Version 52.10 (2); SEMCAD X Version 14.6.12 (7470)

Area Scan (8x10x1): Measurement grid: dx=15mm, dy=15mm

Maximum value of SAR (measured) = 0.0255 W/kg

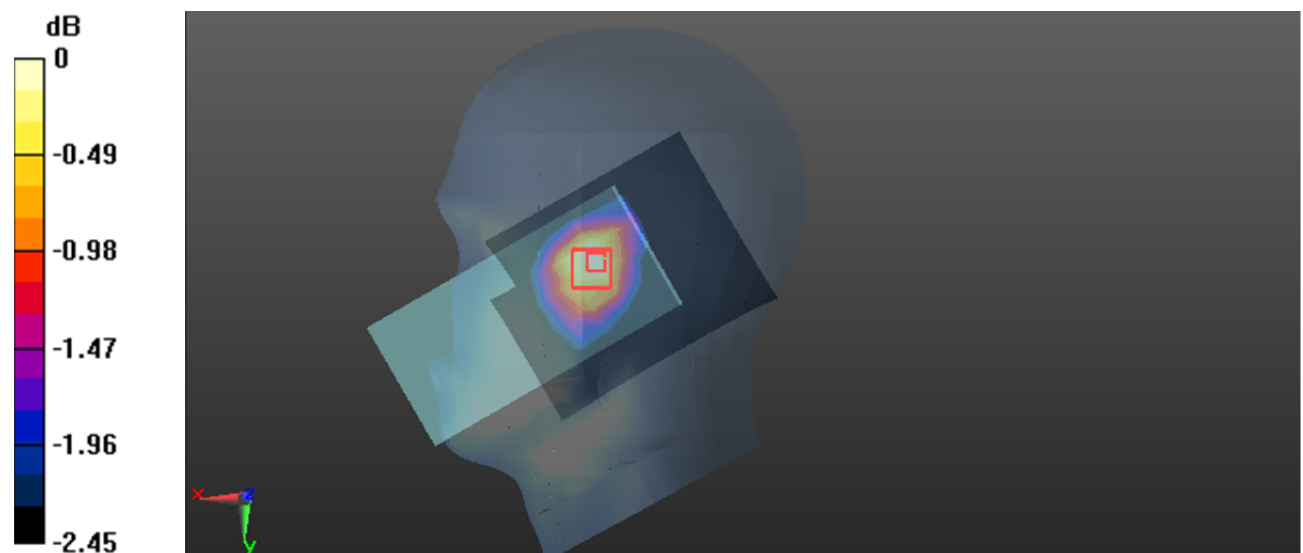
Zoom Scan (5x5x7)/Cube 0: Measurement grid: dx=8mm, dy=8mm, dz=5mm

Reference Value = 3.128 V/m; Power Drift = -0.16 dB

Peak SAR (extrapolated) = 0.0280 W/kg

SAR(1 g) = 0.022 W/kg; SAR(10 g) = 0.018 W/kg

Maximum value of SAR (measured) = 0.0256 W/kg



0 dB = 0.0256 W/kg = -15.92 dBW/kg

Test Plot 196#: 5G NR n5 50%RB Mid_ Head Right Tilt**DUT: Mobile Phone; Type: CL9 ; Serial: 2DB3-1**

Communication System: UID 0, Generic FDD-FR1 n 5 (0); Frequency: 836.5 MHz; Duty Cycle: 1:1

Medium parameters used: $f = 836.5$ MHz; $\sigma = 0.884$ S/m; $\epsilon_r = 42.301$; $\rho = 1000$ kg/m³

Phantom section: Right Section

DASY5 Configuration:

- Probe: ES3DV3 - SN3157; ConvF(6.48, 6.48, 6.48) @ 836.5 MHz; Calibrated: 2023/4/10;
- Sensor-Surface: 3mm (Mechanical Surface Detection)
- Electronics: DAE4 Sn1493; Calibrated: 2023/3/17
- Phantom: Twin SAM; Type: Twin SAM V5.0; Serial: TP:1412
- Measurement SW: DASY52, Version 52.10 (2); SEMCAD X Version 14.6.12 (7470)

Area Scan (8x10x1): Measurement grid: dx=15mm, dy=15mm

Maximum value of SAR (measured) = 0.0252 W/kg

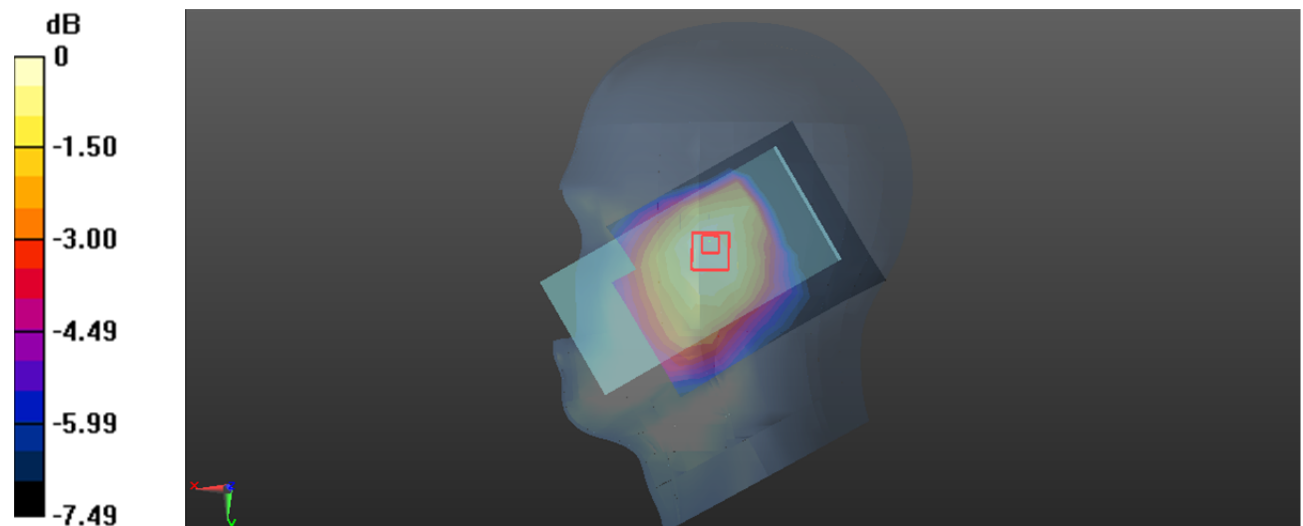
Zoom Scan (5x5x7)/Cube 0: Measurement grid: dx=8mm, dy=8mm, dz=5mm

Reference Value = 2.923 V/m; Power Drift = 0.11 dB

Peak SAR (extrapolated) = 0.0280 W/kg

SAR(1 g) = 0.022 W/kg; SAR(10 g) = 0.018 W/kg

Maximum value of SAR (measured) = 0.0259 W/kg



0 dB = 0.0259 W/kg = -15.87 dBW/kg

Test Plot 197#: 5G NR n5 1RB Mid_ Body Front**DUT: Mobile Phone; Type: CL9 ; Serial: 2DB3-1**

Communication System: UID 0, Generic FDD-FR1 n 5 (0); Frequency: 836.5 MHz; Duty Cycle: 1:1

Medium parameters used: $f = 836.5$ MHz; $\sigma = 0.884$ S/m; $\epsilon_r = 42.301$; $\rho = 1000$ kg/m³

Phantom section: Flat Section

DASY5 Configuration:

- Probe: ES3DV3 - SN3157; ConvF(6.48, 6.48, 6.48) @ 836.5 MHz; Calibrated: 2023/4/10;
- Sensor-Surface: 3mm (Mechanical Surface Detection)
- Electronics: DAE4 Sn1493; Calibrated: 2023/3/17
- Phantom: Twin SAM; Type: Twin SAM V5.0; Serial: TP:1412
- Measurement SW: DASY52, Version 52.10 (2); SEMCAD X Version 14.6.12 (7470)

Area Scan (8x10x1): Measurement grid: dx=15mm, dy=15mm

Maximum value of SAR (measured) = 0.264 W/kg

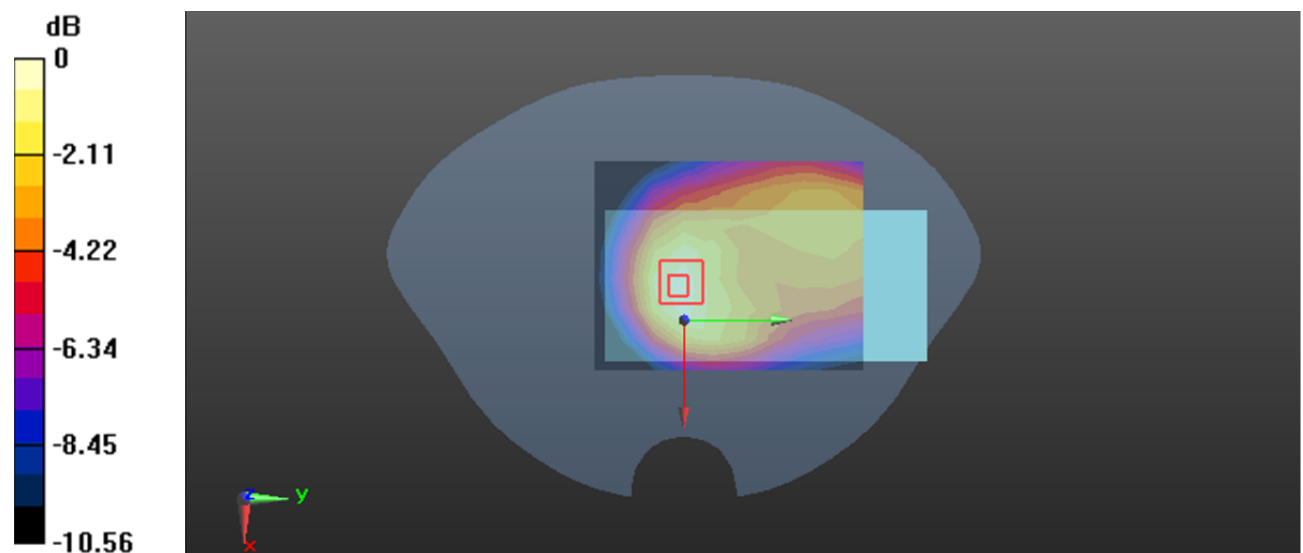
Zoom Scan (5x5x7)/Cube 0: Measurement grid: dx=8mm, dy=8mm, dz=5mm

Reference Value = 14.71 V/m; Power Drift = -0.04 dB

Peak SAR (extrapolated) = 0.319 W/kg

SAR(1 g) = 0.204 W/kg; SAR(10 g) = 0.131 W/kg

Maximum value of SAR (measured) = 0.274 W/kg



0 dB = 0.274 W/kg = -5.62 dBW/kg

Test Plot 198#: 5G NR n5 50%RB Mid_ Body Front**DUT: Mobile Phone; Type: CL9 ; Serial: 2DB3-1**

Communication System: UID 0, Generic FDD-FR1 n 5 (0); Frequency: 836.5 MHz; Duty Cycle: 1:1

Medium parameters used: $f = 836.5$ MHz; $\sigma = 0.884$ S/m; $\epsilon_r = 42.301$; $\rho = 1000$ kg/m³

Phantom section: Flat Section

DASY5 Configuration:

- Probe: ES3DV3 - SN3157; ConvF(6.48, 6.48, 6.48) @ 836.5 MHz; Calibrated: 2023/4/10;
- Sensor-Surface: 3mm (Mechanical Surface Detection)
- Electronics: DAE4 Sn1493; Calibrated: 2023/3/17
- Phantom: Twin SAM; Type: Twin SAM V5.0; Serial: TP:1412
- Measurement SW: DASY52, Version 52.10 (2); SEMCAD X Version 14.6.12 (7470)

Area Scan (8x10x1): Measurement grid: dx=15mm, dy=15mm

Maximum value of SAR (measured) = 0.265 W/kg

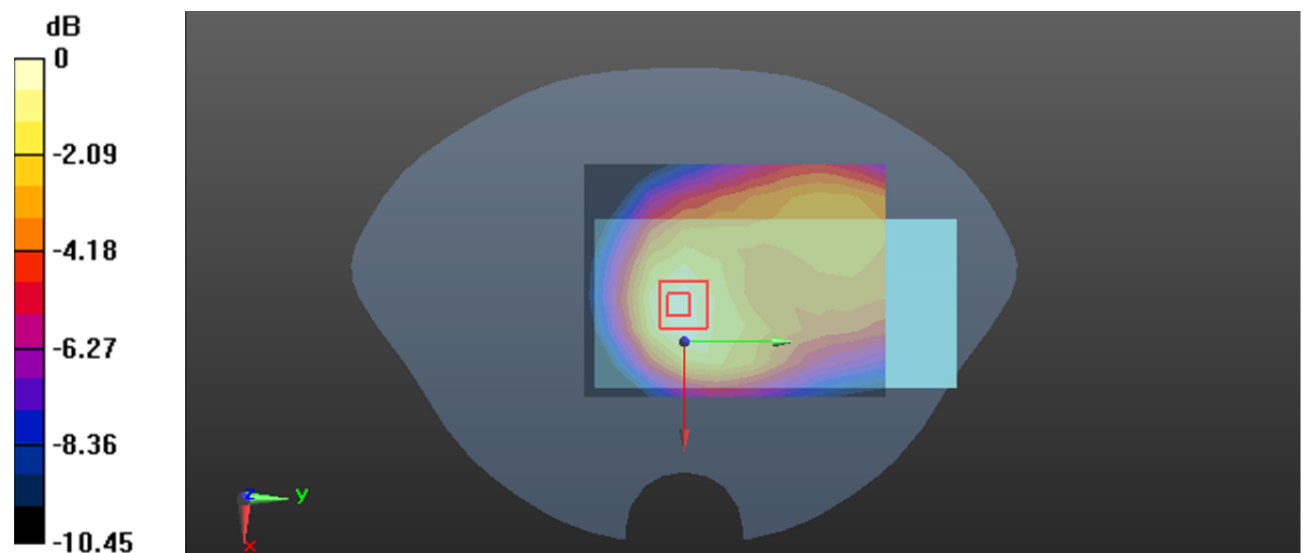
Zoom Scan (5x5x7)/Cube 0: Measurement grid: dx=8mm, dy=8mm, dz=5mm

Reference Value = 14.74 V/m; Power Drift = -0.02 dB

Peak SAR (extrapolated) = 0.327 W/kg

SAR(1 g) = 0.207 W/kg; SAR(10 g) = 0.133 W/kg

Maximum value of SAR (measured) = 0.275 W/kg



0 dB = 0.275 W/kg = -5.61 dBW/kg

Test Plot 199#: 5G NR n5 1RB Mid_ Body Back**DUT: Mobile Phone; Type: CL9 ; Serial: 2DB3-1**

Communication System: UID 0, Generic FDD-FR1 n 5 (0); Frequency: 836.5 MHz; Duty Cycle: 1:1

Medium parameters used: $f = 836.5$ MHz; $\sigma = 0.884$ S/m; $\epsilon_r = 42.301$; $\rho = 1000$ kg/m³

Phantom section: Flat Section

DASY5 Configuration:

- Probe: ES3DV3 - SN3157; ConvF(6.48, 6.48, 6.48) @ 836.5 MHz; Calibrated: 2023/4/10;
- Sensor-Surface: 3mm (Mechanical Surface Detection)
- Electronics: DAE4 Sn1493; Calibrated: 2023/3/17
- Phantom: Twin SAM; Type: Twin SAM V5.0; Serial: TP:1412
- Measurement SW: DASY52, Version 52.10 (2); SEMCAD X Version 14.6.12 (7470)

Area Scan (8x10x1): Measurement grid: dx=15mm, dy=15mm

Maximum value of SAR (measured) = 0.409 W/kg

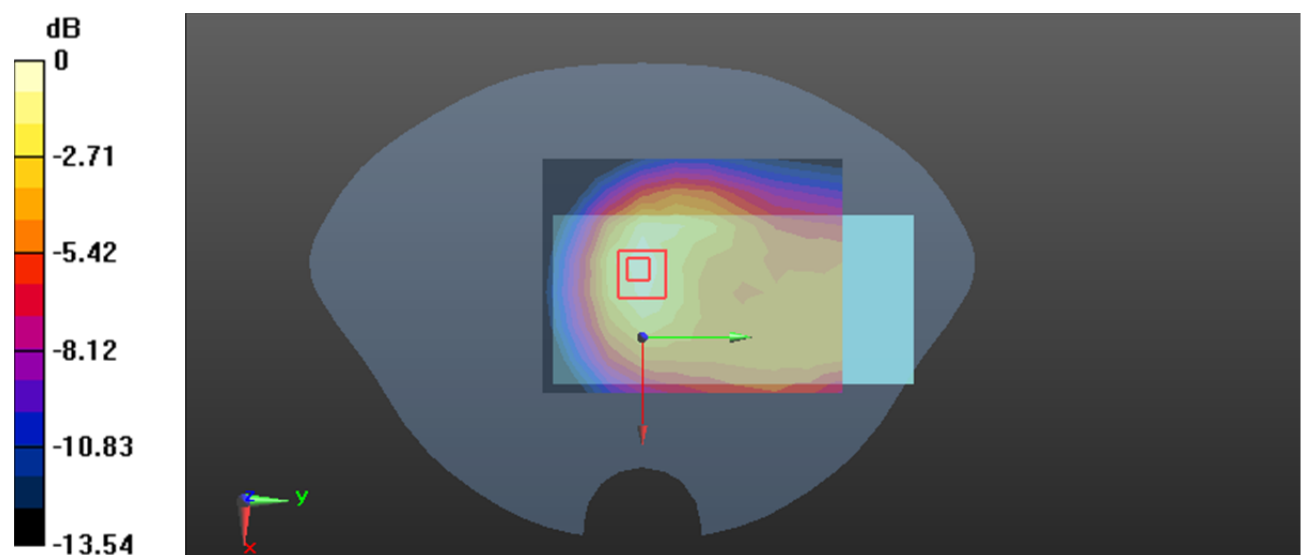
Zoom Scan (5x5x7)/Cube 0: Measurement grid: dx=8mm, dy=8mm, dz=5mm

Reference Value = 17.80 V/m; Power Drift = 0.01 dB

Peak SAR (extrapolated) = 0.492 W/kg

SAR(1 g) = 0.285 W/kg; SAR(10 g) = 0.179 W/kg

Maximum value of SAR (measured) = 0.399 W/kg



0 dB = 0.399 W/kg = -3.99 dBW/kg

Test Plot 200#: 5G NR n5 50%RB Mid_ Body Back**DUT: Mobile Phone; Type: CL9 ; Serial: 2DB3-1**

Communication System: UID 0, Generic FDD-FR1 n 5 (0); Frequency: 836.5 MHz;Duty Cycle: 1:1

Medium parameters used: $f = 836.5$ MHz; $\sigma = 0.884$ S/m; $\epsilon_r = 42.301$; $\rho = 1000$ kg/m³

Phantom section: Flat Section

DASY5 Configuration:

- Probe: ES3DV3 - SN3157; ConvF(6.48, 6.48, 6.48) @ 836.5 MHz; Calibrated: 2023/4/10;
- Sensor-Surface: 3mm (Mechanical Surface Detection)
- Electronics: DAE4 Sn1493; Calibrated: 2023/3/17
- Phantom: Twin SAM; Type: Twin SAM V5.0; Serial: TP:1412
- Measurement SW: DASY52, Version 52.10 (2); SEMCAD X Version 14.6.12 (7470)

Area Scan (8x10x1): Measurement grid: dx=15mm, dy=15mm

Maximum value of SAR (measured) = 0.427 W/kg

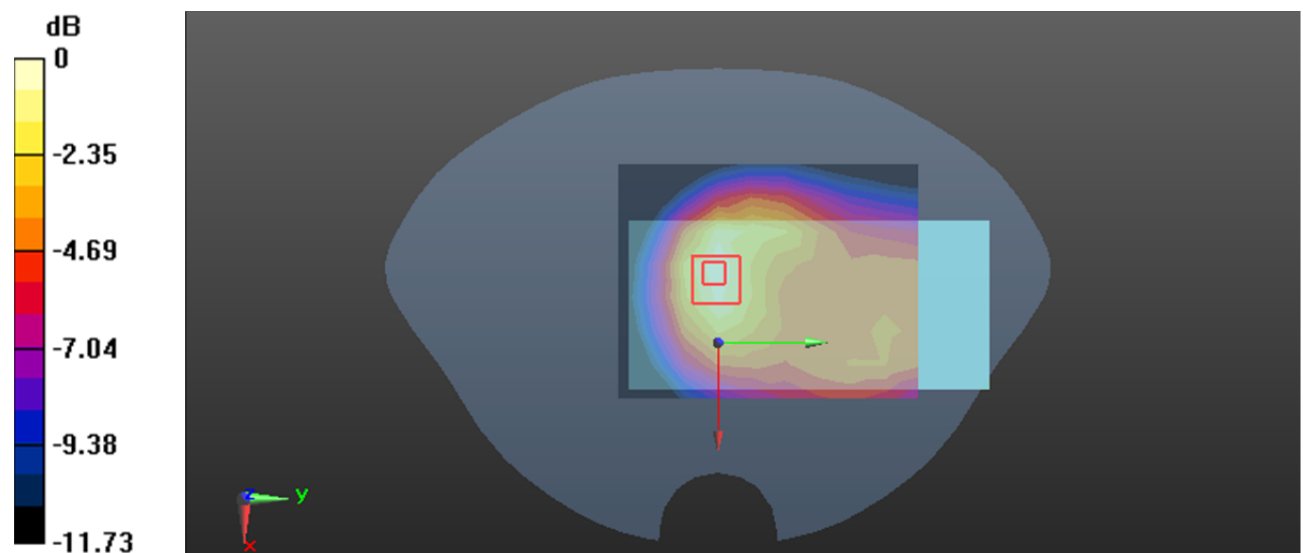
Zoom Scan (5x5x7)/Cube 0: Measurement grid: dx=8mm, dy=8mm, dz=5mm

Reference Value = 17.53 V/m; Power Drift = 0.14 dB

Peak SAR (extrapolated) = 0.508 W/kg

SAR(1 g) = 0.293 W/kg; SAR(10 g) = 0.183 W/kg

Maximum value of SAR (measured) = 0.416 W/kg



0 dB = 0.416 W/kg = -3.81 dBW/kg

Test Plot 201#: 5G NR n5 1RB Mid_ Body Right**DUT: Mobile Phone; Type: CL9 ; Serial: 2DB3-1**

Communication System: UID 0, Generic FDD-FR1 n 5 (0); Frequency: 836.5 MHz; Duty Cycle: 1:1

Medium parameters used: $f = 836.5$ MHz; $\sigma = 0.884$ S/m; $\epsilon_r = 42.301$; $\rho = 1000$ kg/m³

Phantom section: Flat Section

DASY5 Configuration:

- Probe: ES3DV3 - SN3157; ConvF(6.48, 6.48, 6.48) @ 836.5 MHz; Calibrated: 2023/4/10;
- Sensor-Surface: 3mm (Mechanical Surface Detection)
- Electronics: DAE4 Sn1493; Calibrated: 2023/3/17
- Phantom: Twin SAM; Type: Twin SAM V5.0; Serial: TP:1412
- Measurement SW: DASY52, Version 52.10 (2); SEMCAD X Version 14.6.12 (7470)

Area Scan (8x10x1): Measurement grid: dx=15mm, dy=15mm

Maximum value of SAR (measured) = 0.196 W/kg

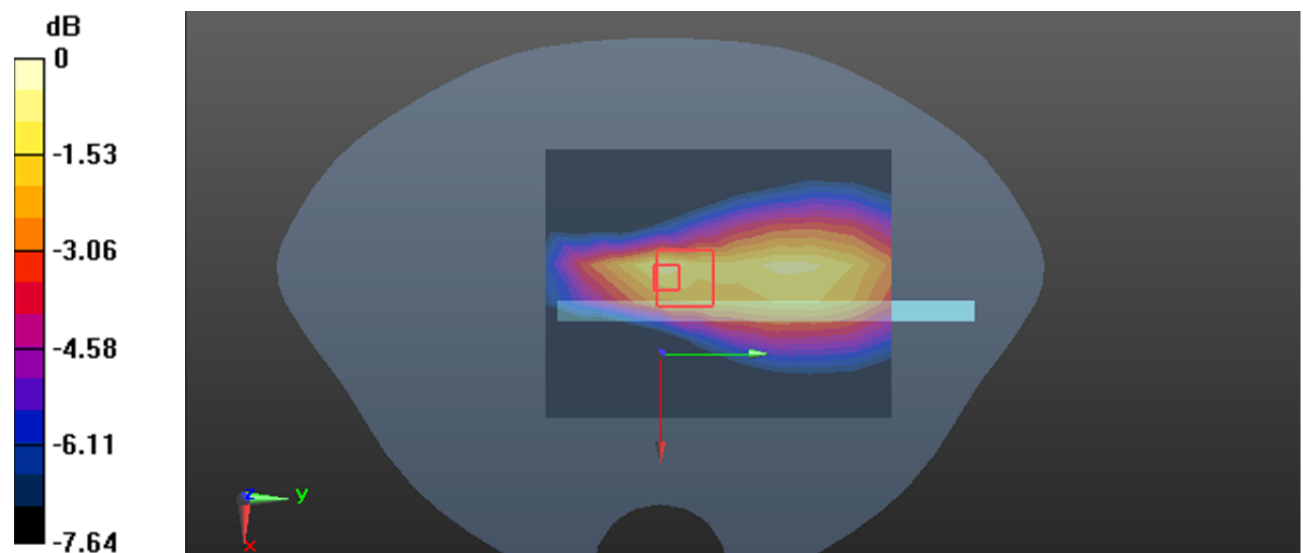
Zoom Scan (5x5x7)/Cube 0: Measurement grid: dx=8mm, dy=8mm, dz=5mm

Reference Value = 12.50 V/m; Power Drift = 0.02 dB

Peak SAR (extrapolated) = 0.292 W/kg

SAR(1 g) = 0.153 W/kg; SAR(10 g) = 0.088 W/kg

Maximum value of SAR (measured) = 0.227 W/kg



0 dB = 0.227 W/kg = -6.44 dBW/kg

Test Plot 202#: 5G NR n5 50%RB Mid_ Body Right**DUT: Mobile Phone; Type: CL9 ; Serial: 2DB3-1**

Communication System: UID 0, Generic FDD-FR1 n 5 (0); Frequency: 836.5 MHz; Duty Cycle: 1:1

Medium parameters used: $f = 836.5$ MHz; $\sigma = 0.884$ S/m; $\epsilon_r = 42.301$; $\rho = 1000$ kg/m³

Phantom section: Flat Section

DASY5 Configuration:

- Probe: ES3DV3 - SN3157; ConvF(6.48, 6.48, 6.48) @ 836.5 MHz; Calibrated: 2023/4/10;
- Sensor-Surface: 3mm (Mechanical Surface Detection)
- Electronics: DAE4 Sn1493; Calibrated: 2023/3/17
- Phantom: Twin SAM; Type: Twin SAM V5.0; Serial: TP:1412
- Measurement SW: DASY52, Version 52.10 (2); SEMCAD X Version 14.6.12 (7470)

Area Scan (8x10x1): Measurement grid: dx=15mm, dy=15mm

Maximum value of SAR (measured) = 0.204 W/kg

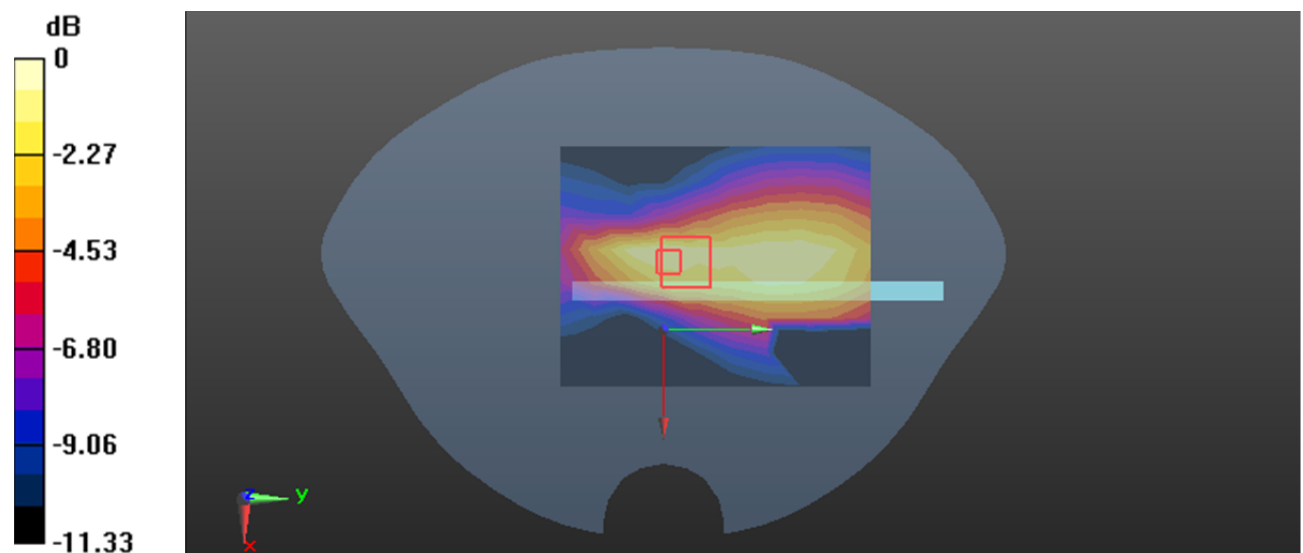
Zoom Scan (5x5x7)/Cube 0: Measurement grid: dx=8mm, dy=8mm, dz=5mm

Reference Value = 12.70 V/m; Power Drift = 0.12 dB

Peak SAR (extrapolated) = 0.302 W/kg

SAR(1 g) = 0.160 W/kg; SAR(10 g) = 0.095 W/kg

Maximum value of SAR (measured) = 0.237 W/kg



0 dB = 0.237 W/kg = -6.25 dBW/kg

Test Plot 203#: 5G NR n5 1RB Mid_Body Bottom**DUT: Mobile Phone; Type: CL9 ; Serial: 2DB3-1**

Communication System: UID 0, Generic FDD-FR1 n 5 (0); Frequency: 836.5 MHz; Duty Cycle: 1:1

Medium parameters used: $f = 836.5$ MHz; $\sigma = 0.884$ S/m; $\epsilon_r = 42.301$; $\rho = 1000$ kg/m³

Phantom section: Flat Section

DASY5 Configuration:

- Probe: ES3DV3 - SN3157; ConvF(6.48, 6.48, 6.48) @ 836.5 MHz; Calibrated: 2023/4/10;
- Sensor-Surface: 3mm (Mechanical Surface Detection)
- Electronics: DAE4 Sn1493; Calibrated: 2023/3/17
- Phantom: Twin SAM; Type: Twin SAM V5.0; Serial: TP:1412
- Measurement SW: DASY52, Version 52.10 (2); SEMCAD X Version 14.6.12 (7470)

Area Scan (8x10x1): Measurement grid: dx=15mm, dy=15mm

Maximum value of SAR (measured) = 0.0552 W/kg

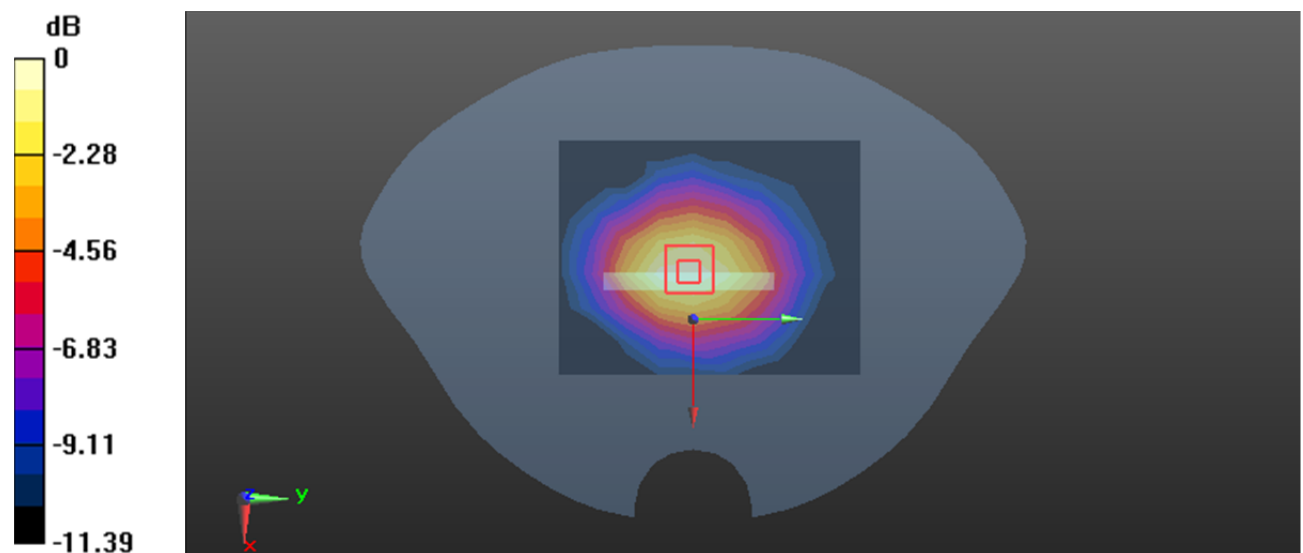
Zoom Scan (5x5x7)/Cube 0: Measurement grid: dx=8mm, dy=8mm, dz=5mm

Reference Value = 6.776 V/m; Power Drift = -0.18 dB

Peak SAR (extrapolated) = 0.0650 W/kg

SAR(1 g) = 0.042 W/kg; SAR(10 g) = 0.027 W/kg

Maximum value of SAR (measured) = 0.0554 W/kg



0 dB = 0.0554 W/kg = -12.56 dBW/kg

Test Plot 204#: 5G NR n5 50%RB Mid_ Body Bottom**DUT: Mobile Phone; Type: CL9 ; Serial: 2DB3-1**

Communication System: UID 0, Generic FDD-FR1 n 5 (0); Frequency: 836.5 MHz; Duty Cycle: 1:1

Medium parameters used: $f = 836.5$ MHz; $\sigma = 0.884$ S/m; $\epsilon_r = 42.301$; $\rho = 1000$ kg/m³

Phantom section: Flat Section

DASY5 Configuration:

- Probe: ES3DV3 - SN3157; ConvF(6.48, 6.48, 6.48) @ 836.5 MHz; Calibrated: 2023/4/10;
- Sensor-Surface: 3mm (Mechanical Surface Detection)
- Electronics: DAE4 Sn1493; Calibrated: 2023/3/17
- Phantom: Twin SAM; Type: Twin SAM V5.0; Serial: TP:1412
- Measurement SW: DASY52, Version 52.10 (2); SEMCAD X Version 14.6.12 (7470)

Area Scan (8x10x1): Measurement grid: dx=15mm, dy=15mm

Maximum value of SAR (measured) = 0.0563 W/kg

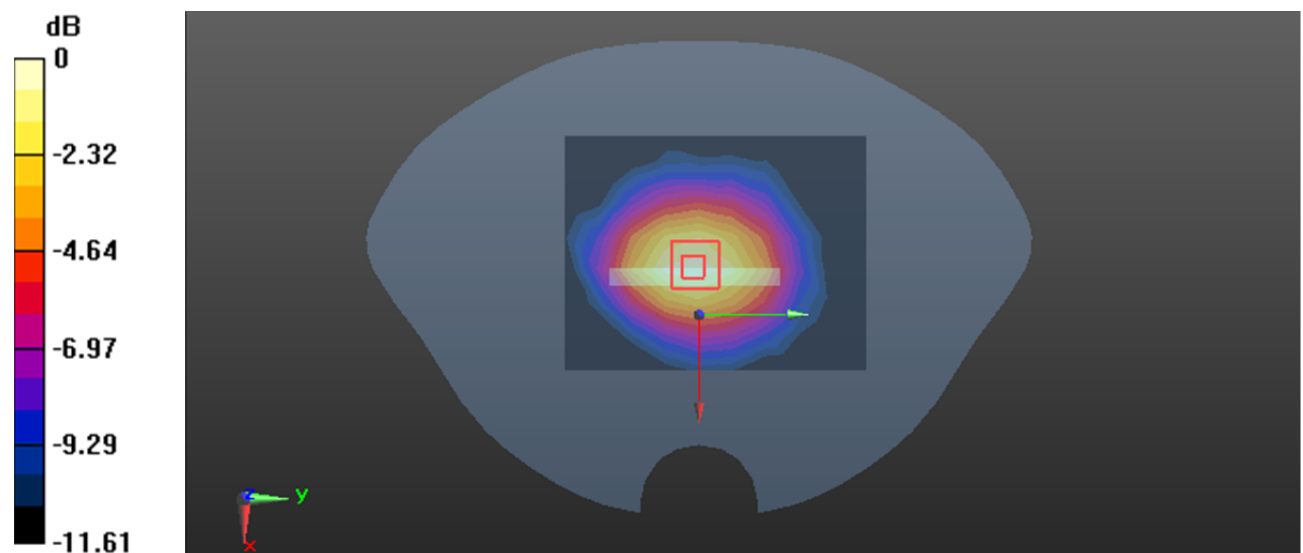
Zoom Scan (5x5x7)/Cube 0: Measurement grid: dx=8mm, dy=8mm, dz=5mm

Reference Value = 6.918 V/m; Power Drift = -0.01 dB

Peak SAR (extrapolated) = 0.0680 W/kg

SAR(1 g) = 0.043 W/kg; SAR(10 g) = 0.028 W/kg

Maximum value of SAR (measured) = 0.0581 W/kg



0 dB = 0.0581 W/kg = -12.36 dBW/kg

Test Plot 205#: 5G NR n7 1RB Mid_ Head Left Cheek**DUT: Mobile Phone; Type: CL9 ; Serial: 2DB3-1**

Communication System: UID 0, Generic FDD-FR1 n 7 (0); Frequency: 2535 MHz;Duty Cycle: 1:1

Medium parameters used: $f = 2535$ MHz; $\sigma = 1.878$ S/m; $\epsilon_r = 38.897$; $\rho = 1000$ kg/m³

Phantom section: Left Section

DASY5 Configuration:

- Probe: ES3DV3 - SN3157; ConvF(4.74, 4.74, 4.74) @ 2535 MHz; Calibrated: 2023/4/10
- Sensor-Surface: 3mm (Mechanical Surface Detection)
- Electronics: DAE4 Sn1493; Calibrated: 2023/3/17
- Phantom: Twin SAM; Type: Twin SAM V5.0; Serial: TP:1412
- Measurement SW: DASY52, Version 52.10 (2); SEMCAD X Version 14.6.12 (7470)

Area Scan (11x11x1): Measurement grid: dx=10mm, dy=10mm

Maximum value of SAR (measured) = 0.0717 W/kg

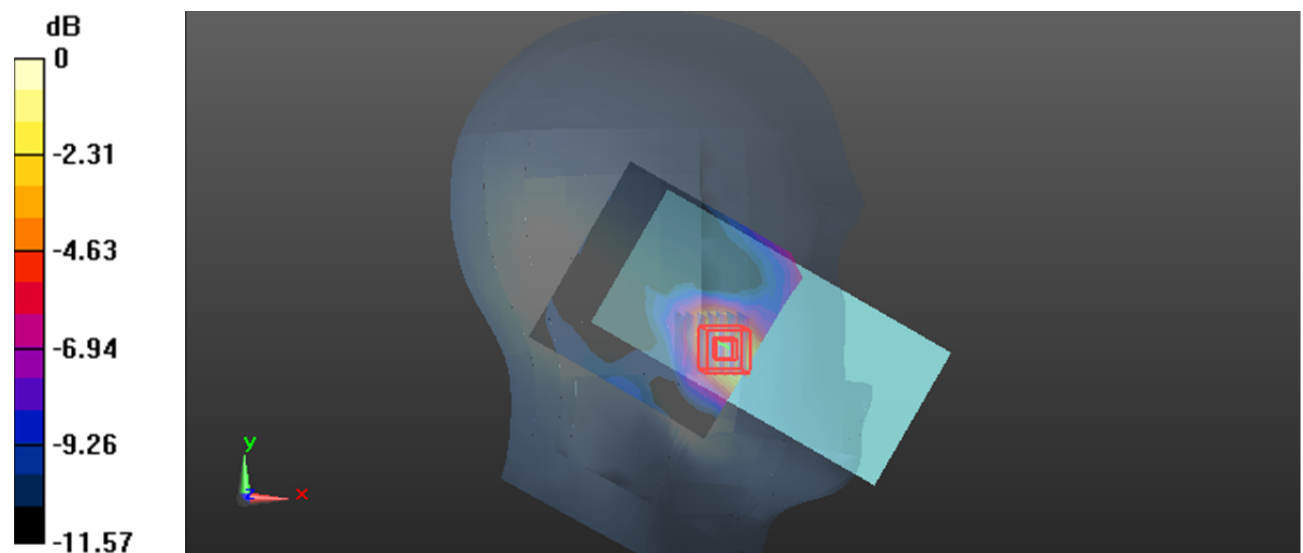
Zoom Scan (7x7x7)/Cube 0: Measurement grid: dx=5mm, dy=5mm, dz=5mm

Reference Value = 1.669 V/m; Power Drift = 0.14 dB

Peak SAR (extrapolated) = 0.0960 W/kg

SAR(1 g) = 0.053 W/kg; SAR(10 g) = 0.030 W/kg

Maximum value of SAR (measured) = 0.0765 W/kg



0 dB = 0.0765 W/kg = -11.16 dBW/kg

Test Plot 206#: 5G NR n7 50%RB Mid_ Head Left Cheek**DUT: Mobile Phone; Type: CL9 ; Serial: 2DB3-1**

Communication System: UID 0, Generic FDD-FR1 n 7 (0); Frequency: 2535 MHz;Duty Cycle: 1:1

Medium parameters used: $f = 2535 \text{ MHz}$; $\sigma = 1.878 \text{ S/m}$; $\epsilon_r = 38.897$; $\rho = 1000 \text{ kg/m}^3$

Phantom section: Left Section

DASY5 Configuration:

- Probe: ES3DV3 - SN3157; ConvF(4.74, 4.74, 4.74) @ 2535 MHz; Calibrated: 2023/4/10
- Sensor-Surface: 3mm (Mechanical Surface Detection)
- Electronics: DAE4 Sn1493; Calibrated: 2023/3/17
- Phantom: Twin SAM; Type: Twin SAM V5.0; Serial: TP:1412
- Measurement SW: DASY52, Version 52.10 (2); SEMCAD X Version 14.6.12 (7470)

Area Scan (11x11x1): Measurement grid: $dx=10\text{mm}$, $dy=10\text{mm}$

Maximum value of SAR (measured) = 0.0782 W/kg

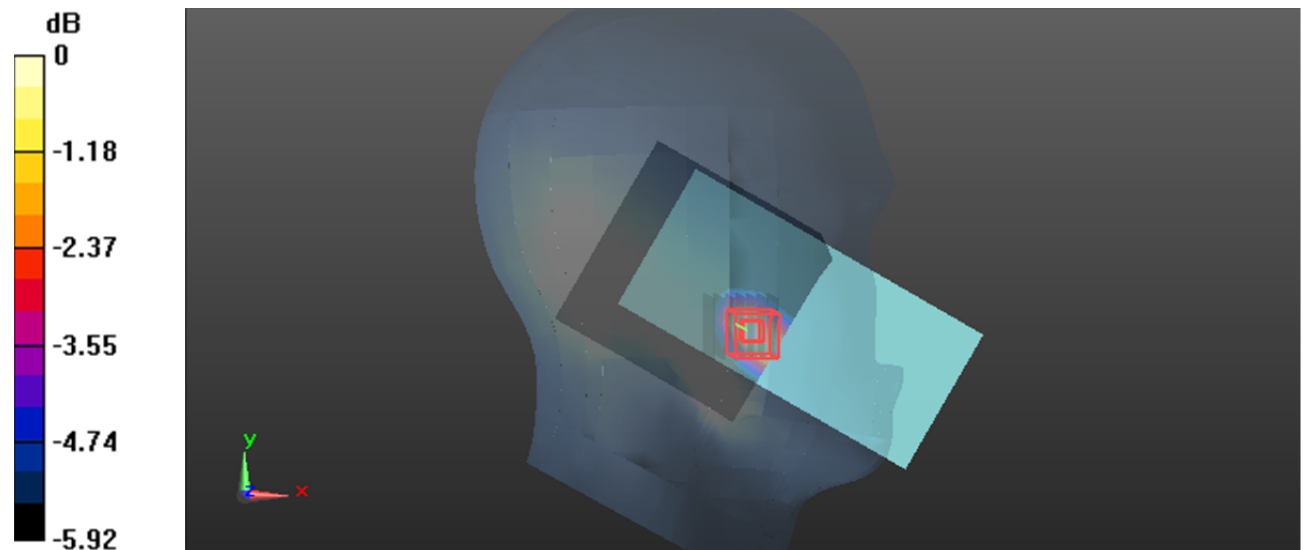
Zoom Scan (7x7x7)/Cube 0: Measurement grid: $dx=5\text{mm}$, $dy=5\text{mm}$, $dz=5\text{mm}$

Reference Value = 1.524 V/m; Power Drift = 0.14 dB

Peak SAR (extrapolated) = 0.0960 W/kg

SAR(1 g) = 0.051 W/kg; SAR(10 g) = 0.029 W/kg

Maximum value of SAR (measured) = 0.0786 W/kg



0 dB = 0.0786 W/kg = -11.05 dBW/kg

Test Plot 207#: 5G NR n7 1RB Mid_ Head Left Tilt**DUT: Mobile Phone; Type: CL9 ; Serial: 2DB3-1**

Communication System: UID 0, Generic FDD-FR1 n 7 (0); Frequency: 2535 MHz;Duty Cycle: 1:1

Medium parameters used: $f = 2535$ MHz; $\sigma = 1.878$ S/m; $\epsilon_r = 38.897$; $\rho = 1000$ kg/m³

Phantom section: Left Section

DASY5 Configuration:

- Probe: ES3DV3 - SN3157; ConvF(4.74, 4.74, 4.74) @ 2535 MHz; Calibrated: 2023/4/10
- Sensor-Surface: 3mm (Mechanical Surface Detection)
- Electronics: DAE4 Sn1493; Calibrated: 2023/3/17
- Phantom: Twin SAM; Type: Twin SAM V5.0; Serial: TP:1412
- Measurement SW: DASY52, Version 52.10 (2); SEMCAD X Version 14.6.12 (7470)

Area Scan (11x11x1): Measurement grid: dx=10mm, dy=10mm

Maximum value of SAR (measured) = 0.0265 W/kg

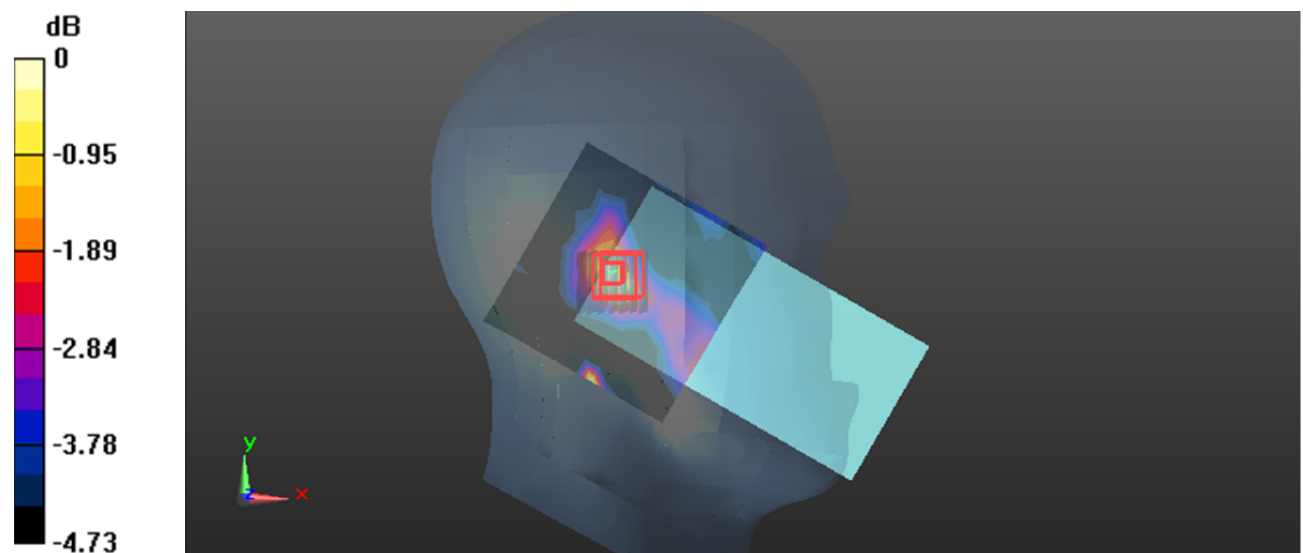
Zoom Scan (7x7x7)/Cube 0: Measurement grid: dx=5mm, dy=5mm, dz=5mm

Reference Value = 2.508 V/m; Power Drift = 0.16 dB

Peak SAR (extrapolated) = 0.0300 W/kg

SAR(1 g) = 0.018 W/kg; SAR(10 g) = 0.012 W/kg

Maximum value of SAR (measured) = 0.0246 W/kg



0 dB = 0.0246 W/kg = -16.09 dBW/kg

Test Plot 208#: 5G NR n7 50%RB Mid_ Head Left Tilt**DUT: Mobile Phone; Type: CL9 ; Serial: 2DB3-1**

Communication System: UID 0, Generic FDD-FR1 n 7 (0); Frequency: 2535 MHz;Duty Cycle: 1:1

Medium parameters used: $f = 2535$ MHz; $\sigma = 1.878$ S/m; $\epsilon_r = 38.897$; $\rho = 1000$ kg/m³

Phantom section: Left Section

DASY5 Configuration:

- Probe: ES3DV3 - SN3157; ConvF(4.74, 4.74, 4.74) @ 2535 MHz; Calibrated: 2023/4/10
- Sensor-Surface: 3mm (Mechanical Surface Detection)
- Electronics: DAE4 Sn1493; Calibrated: 2023/3/17
- Phantom: Twin SAM; Type: Twin SAM V5.0; Serial: TP:1412
- Measurement SW: DASY52, Version 52.10 (2); SEMCAD X Version 14.6.12 (7470)

Area Scan (11x11x1): Measurement grid: dx=10mm, dy=10mm

Maximum value of SAR (measured) = 0.0300 W/kg

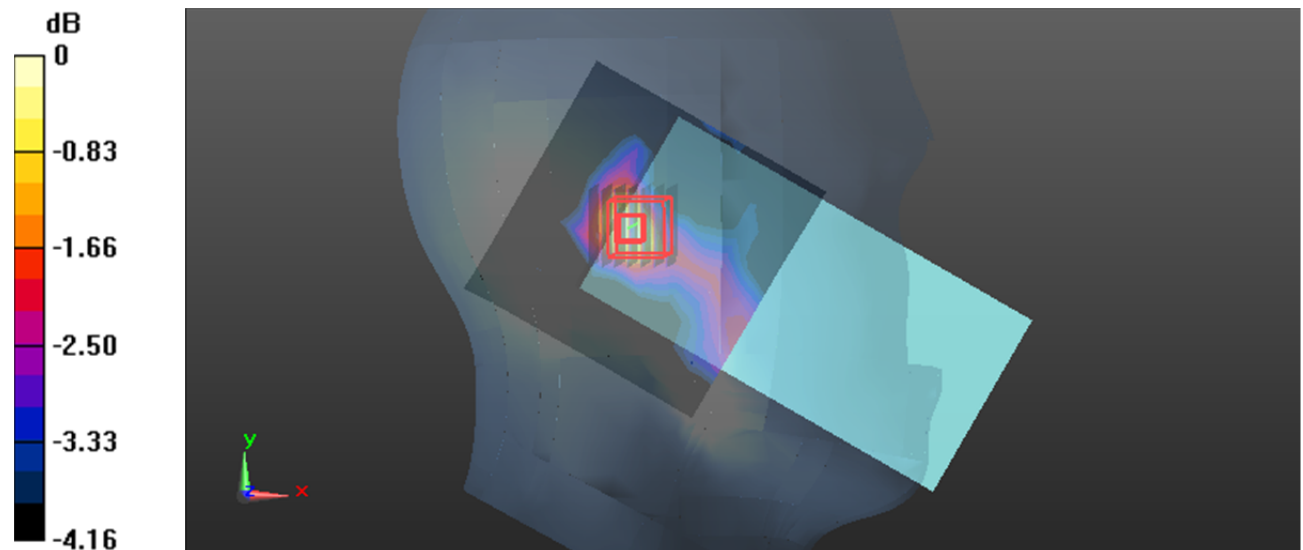
Zoom Scan (7x7x7)/Cube 0: Measurement grid: dx=5mm, dy=5mm, dz=5mm

Reference Value = 2.684 V/m; Power Drift = 0.19 dB

Peak SAR (extrapolated) = 0.0340 W/kg

SAR(1 g) = 0.019 W/kg; SAR(10 g) = 0.013 W/kg

Maximum value of SAR (measured) = 0.0261 W/kg



0 dB = 0.0261 W/kg = -15.83 dBW/kg

Test Plot 209#: 5G NR n7 1RB Mid_ Head Right Cheek**DUT: Mobile Phone; Type: CL9 ; Serial: 2DB3-1**

Communication System: UID 0, Generic FDD-FR1 n 7 (0); Frequency: 2535 MHz;Duty Cycle: 1:1

Medium parameters used: $f = 2535 \text{ MHz}$; $\sigma = 1.878 \text{ S/m}$; $\epsilon_r = 38.897$; $\rho = 1000 \text{ kg/m}^3$

Phantom section: Right Section

DASY5 Configuration:

- Probe: ES3DV3 - SN3157; ConvF(4.74, 4.74, 4.74) @ 2535 MHz; Calibrated: 2023/4/10
- Sensor-Surface: 3mm (Mechanical Surface Detection)
- Electronics: DAE4 Sn1493; Calibrated: 2023/3/17
- Phantom: Twin SAM; Type: Twin SAM V5.0; Serial: TP:1412
- Measurement SW: DASY52, Version 52.10 (2); SEMCAD X Version 14.6.12 (7470)

Area Scan (11x11x1): Measurement grid: $dx=10\text{mm}$, $dy=10\text{mm}$

Maximum value of SAR (measured) = 0.121 W/kg

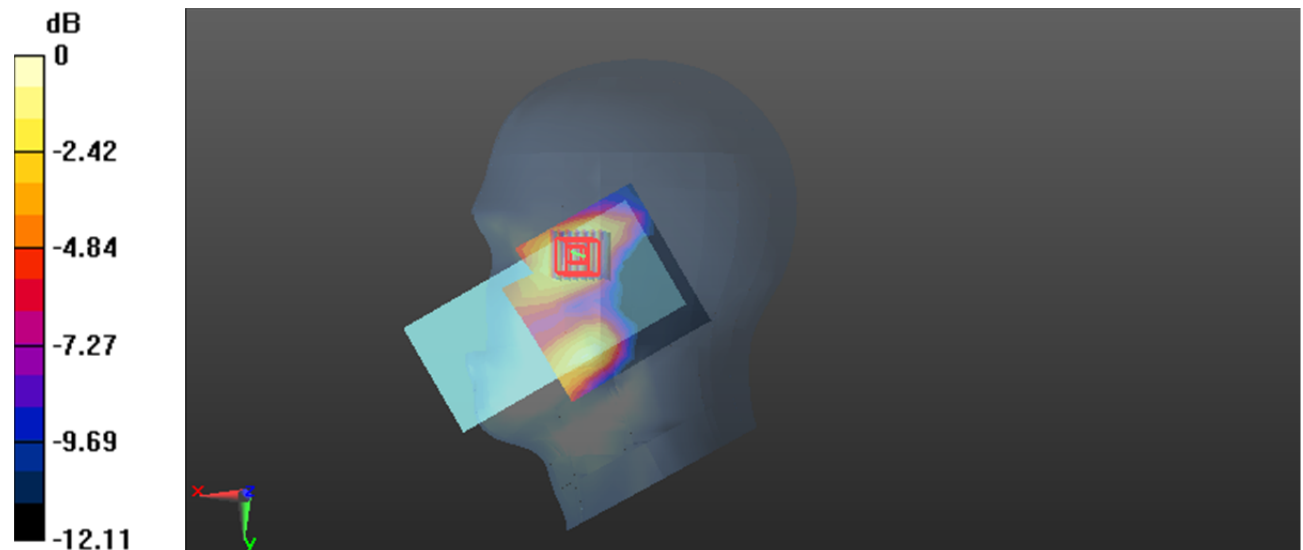
Zoom Scan (7x7x7)/Cube 0: Measurement grid: $dx=5\text{mm}$, $dy=5\text{mm}$, $dz=5\text{mm}$

Reference Value = 1.378 V/m; Power Drift = 0.12 dB

Peak SAR (extrapolated) = 0.143 W/kg

SAR(1 g) = 0.083 W/kg; SAR(10 g) = 0.049 W/kg

Maximum value of SAR (measured) = 0.121 W/kg



0 dB = 0.121 W/kg = -9.17 dBW/kg

Test Plot 210#: 5G NR n7 50%RB Mid_ Head Right Cheek**DUT: Mobile Phone; Type: CL9 ; Serial: 2DB3-1**

Communication System: UID 0, Generic FDD-FR1 n 7 (0); Frequency: 2535 MHz;Duty Cycle: 1:1

Medium parameters used: $f = 2535$ MHz; $\sigma = 1.878$ S/m; $\epsilon_r = 38.897$; $\rho = 1000$ kg/m³

Phantom section: Right Section

DASY5 Configuration:

- Probe: ES3DV3 - SN3157; ConvF(4.74, 4.74, 4.74) @ 2535 MHz; Calibrated: 2023/4/10
- Sensor-Surface: 3mm (Mechanical Surface Detection)
- Electronics: DAE4 Sn1493; Calibrated: 2023/3/17
- Phantom: Twin SAM; Type: Twin SAM V5.0; Serial: TP:1412
- Measurement SW: DASY52, Version 52.10 (2); SEMCAD X Version 14.6.12 (7470)

Area Scan (11x11x1): Measurement grid: dx=10mm, dy=10mm

Maximum value of SAR (measured) = 0.118 W/kg

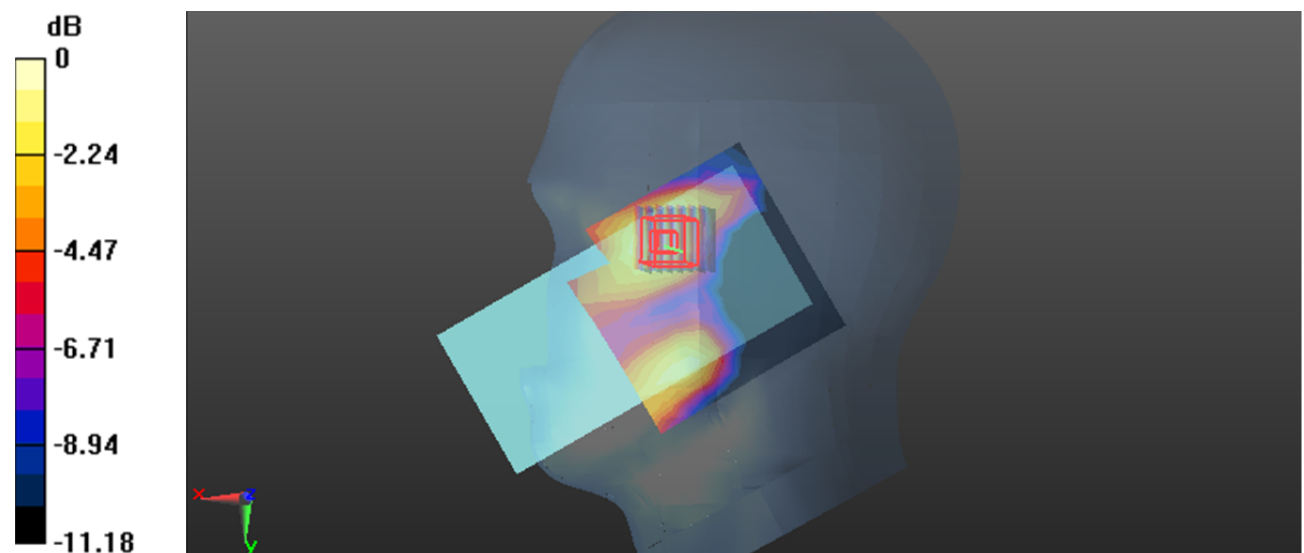
Zoom Scan (7x7x7)/Cube 0: Measurement grid: dx=5mm, dy=5mm, dz=5mm

Reference Value = 2.154 V/m; Power Drift = 0.15 dB

Peak SAR (extrapolated) = 0.137 W/kg

SAR(1 g) = 0.081 W/kg; SAR(10 g) = 0.047 W/kg

Maximum value of SAR (measured) = 0.116 W/kg



0 dB = 0.116 W/kg = -9.36 dBW/kg

Test Plot 211#: 5G NR n7 1RB Mid_ Head Right Tilt**DUT: Mobile Phone; Type: CL9 ; Serial: 2DB3-1**

Communication System: UID 0, Generic FDD-FR1 n 7 (0); Frequency: 2535 MHz;Duty Cycle: 1:1

Medium parameters used: $f = 2535$ MHz; $\sigma = 1.878$ S/m; $\epsilon_r = 38.897$; $\rho = 1000$ kg/m³

Phantom section: Right Section

DASY5 Configuration:

- Probe: ES3DV3 - SN3157; ConvF(4.74, 4.74, 4.74) @ 2535 MHz; Calibrated: 2023/4/10
- Sensor-Surface: 3mm (Mechanical Surface Detection)
- Electronics: DAE4 Sn1493; Calibrated: 2023/3/17
- Phantom: Twin SAM; Type: Twin SAM V5.0; Serial: TP:1412
- Measurement SW: DASY52, Version 52.10 (2); SEMCAD X Version 14.6.12 (7470)

Area Scan (11x11x1): Measurement grid: dx=10mm, dy=10mm

Maximum value of SAR (measured) = 0.0321 W/kg

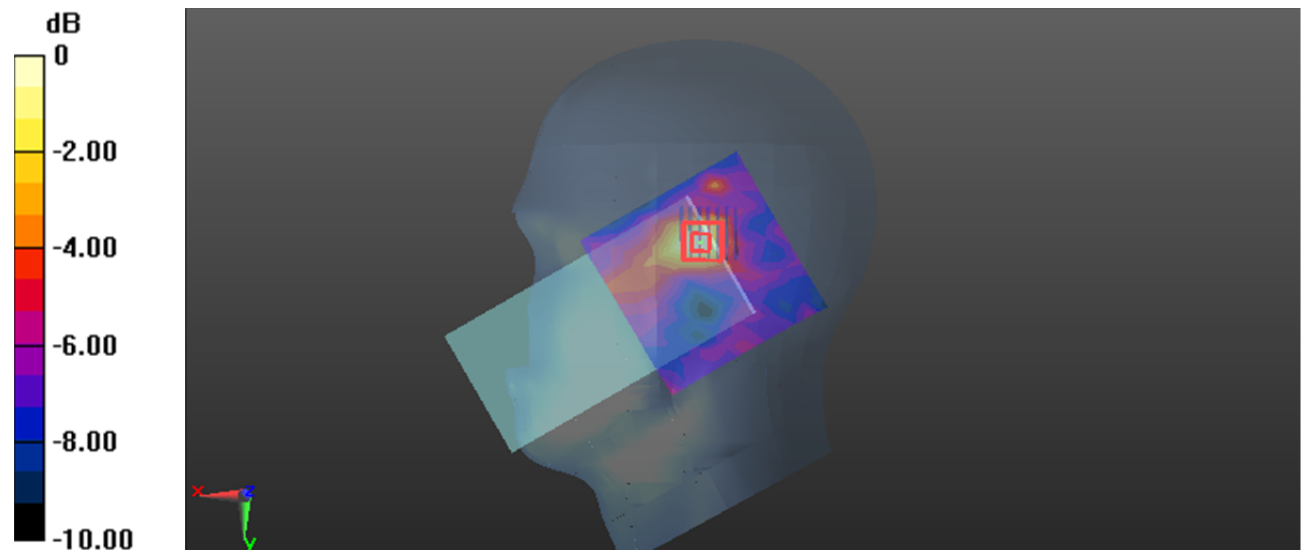
Zoom Scan (7x7x7)/Cube 0: Measurement grid: dx=5mm, dy=5mm, dz=5mm

Reference Value = 2.232 V/m; Power Drift = -0.15 dB

Peak SAR (extrapolated) = 0.0370 W/kg

SAR(1 g) = 0.020 W/kg; SAR(10 g) = 0.011 W/kg

Maximum value of SAR (measured) = 0.0304 W/kg



0 dB = 0.0304 W/kg = -15.17 dBW/kg

Test Plot 212#: 5G NR n7 50%RB Mid_ Head Right Tilt**DUT: Mobile Phone; Type: CL9 ; Serial: 2DB3-1**

Communication System: UID 0, Generic FDD-FR1 n 7 (0); Frequency: 2535 MHz;Duty Cycle: 1:1

Medium parameters used: $f = 2535$ MHz; $\sigma = 1.878$ S/m; $\epsilon_r = 38.897$; $\rho = 1000$ kg/m³

Phantom section: Right Section

DASY5 Configuration:

- Probe: ES3DV3 - SN3157; ConvF(4.74, 4.74, 4.74) @ 2535 MHz; Calibrated: 2023/4/10
- Sensor-Surface: 3mm (Mechanical Surface Detection)
- Electronics: DAE4 Sn1493; Calibrated: 2023/3/17
- Phantom: Twin SAM; Type: Twin SAM V5.0; Serial: TP:1412
- Measurement SW: DASY52, Version 52.10 (2); SEMCAD X Version 14.6.12 (7470)

Area Scan (11x11x1): Measurement grid: dx=10mm, dy=10mm

Maximum value of SAR (measured) = 0.0284 W/kg

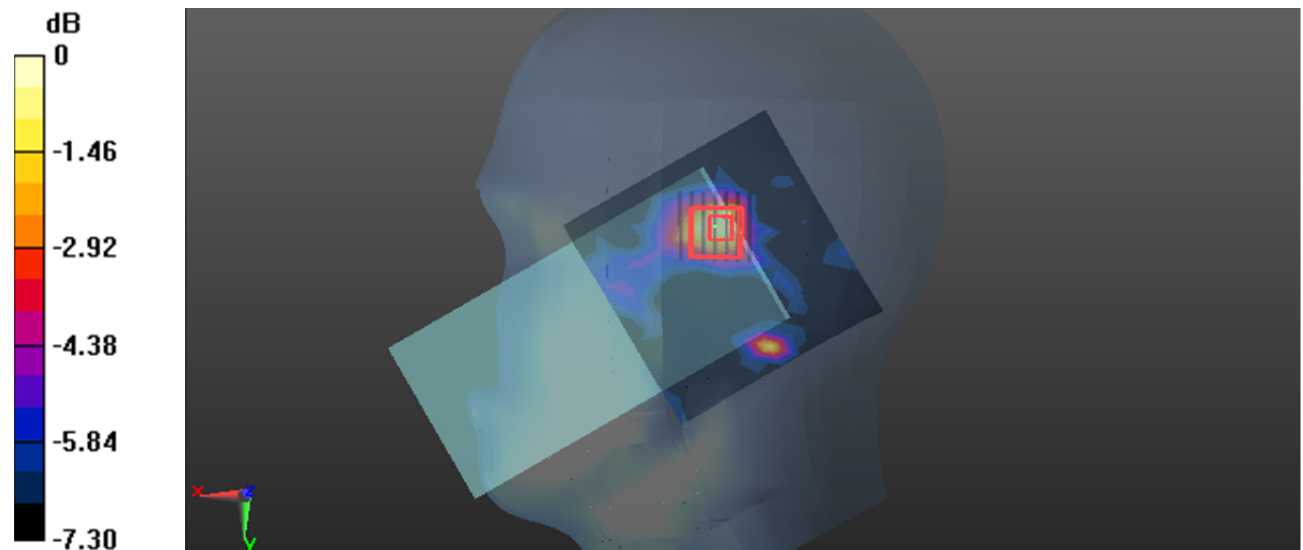
Zoom Scan (7x7x7)/Cube 0: Measurement grid: dx=5mm, dy=5mm, dz=5mm

Reference Value = 1.719 V/m; Power Drift = 0.14 dB

Peak SAR (extrapolated) = 0.0450 W/kg

SAR(1 g) = 0.021 W/kg; SAR(10 g) = 0.011 W/kg

Maximum value of SAR (measured) = 0.0317 W/kg



0 dB = 0.0317 W/kg = -14.99 dBW/kg

Test Plot 213#: 5G NR n7 1RB Mid_ Body Front**DUT: Mobile Phone; Type: CL9 ; Serial: 2DB3-1**

Communication System: UID 0, Generic FDD-FR1 n 7 (0); Frequency: 2535 MHz;Duty Cycle: 1:1

Medium parameters used: $f = 2535 \text{ MHz}$; $\sigma = 1.878 \text{ S/m}$; $\epsilon_r = 38.897$; $\rho = 1000 \text{ kg/m}^3$

Phantom section: Flat Section

DASY5 Configuration:

- Probe: ES3DV3 - SN3157; ConvF(4.74, 4.74, 4.74) @ 2535 MHz; Calibrated: 2023/4/10
- Sensor-Surface: 3mm (Mechanical Surface Detection)
- Electronics: DAE4 Sn1493; Calibrated: 2023/3/17
- Phantom: Twin SAM; Type: Twin SAM V5.0; Serial: TP:1412
- Measurement SW: DASY52, Version 52.10 (2); SEMCAD X Version 14.6.12 (7470)

Area Scan (11x11x1): Measurement grid: $dx=10\text{mm}$, $dy=10\text{mm}$

Maximum value of SAR (measured) = 0.212 W/kg

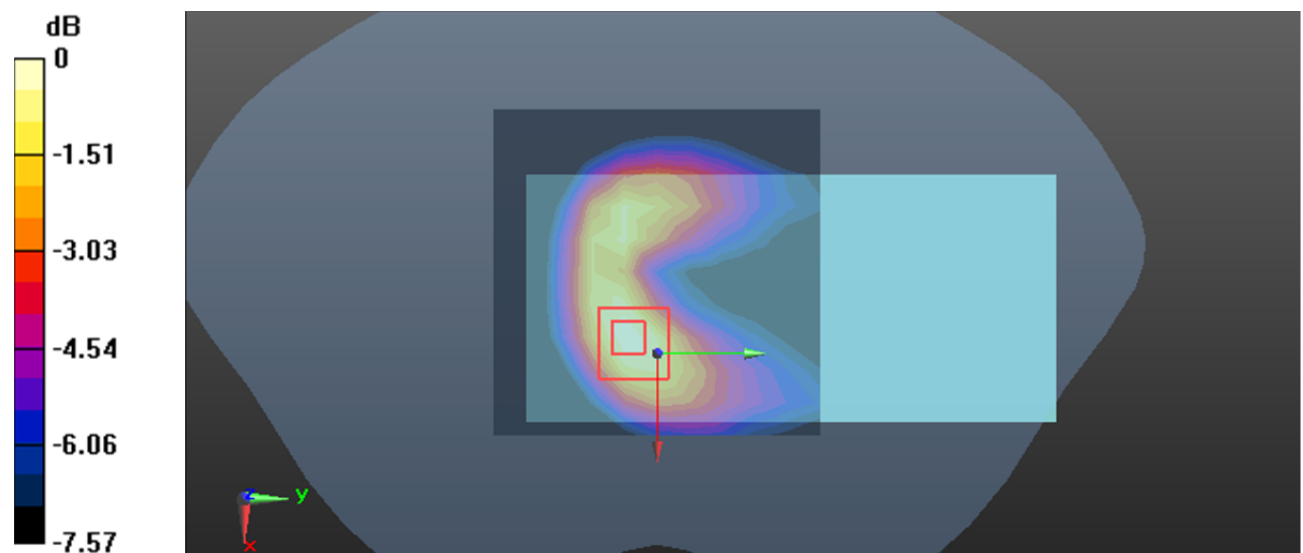
Zoom Scan (7x7x7)/Cube 0: Measurement grid: $dx=5\text{mm}$, $dy=5\text{mm}$, $dz=5\text{mm}$

Reference Value = 4.538 V/m; Power Drift = -0.02 dB

Peak SAR (extrapolated) = 0.253 W/kg

SAR(1 g) = 0.140 W/kg; SAR(10 g) = 0.075 W/kg

Maximum value of SAR (measured) = 0.210 W/kg



0 dB = 0.210 W/kg = -6.78 dBW/kg

Test Plot 214#: 5G NR n7 50%RB Mid_ Body Front**DUT: Mobile Phone; Type: CL9 ; Serial: 2DB3-1**

Communication System: UID 0, Generic FDD-FR1 n 7 (0); Frequency: 2535 MHz;Duty Cycle: 1:1

Medium parameters used: $f = 2535 \text{ MHz}$; $\sigma = 1.878 \text{ S/m}$; $\epsilon_r = 38.897$; $\rho = 1000 \text{ kg/m}^3$

Phantom section: Flat Section

DASY5 Configuration:

- Probe: ES3DV3 - SN3157; ConvF(4.74, 4.74, 4.74) @ 2535 MHz; Calibrated: 2023/4/10
- Sensor-Surface: 3mm (Mechanical Surface Detection)
- Electronics: DAE4 Sn1493; Calibrated: 2023/3/17
- Phantom: Twin SAM; Type: Twin SAM V5.0; Serial: TP:1412
- Measurement SW: DASY52, Version 52.10 (2); SEMCAD X Version 14.6.12 (7470)

Area Scan (11x11x1): Measurement grid: $dx=10\text{mm}$, $dy=10\text{mm}$

Maximum value of SAR (measured) = 0.211 W/kg

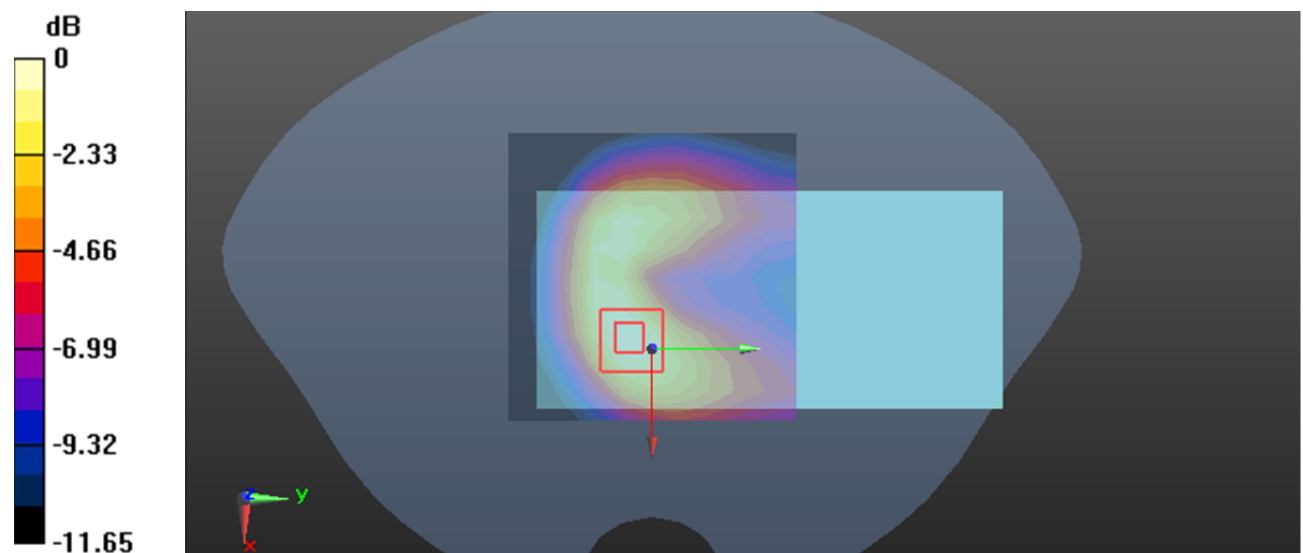
Zoom Scan (7x7x7)/Cube 0: Measurement grid: $dx=5\text{mm}$, $dy=5\text{mm}$, $dz=5\text{mm}$

Reference Value = 4.239 V/m; Power Drift = 0.17 dB

Peak SAR (extrapolated) = 0.253 W/kg

SAR(1 g) = 0.139 W/kg; SAR(10 g) = 0.075 W/kg

Maximum value of SAR (measured) = 0.208 W/kg



0 dB = 0.208 W/kg = -6.82 dBW/kg

Test Plot 215#: 5G NR n7 1RB Mid_ Body Back**DUT: Mobile Phone; Type: CL9 ; Serial: 2DB3-1**

Communication System: UID 0, Generic FDD-FR1 n 7 (0); Frequency: 2535 MHz;Duty Cycle: 1:1

Medium parameters used: $f = 2535$ MHz; $\sigma = 1.878$ S/m; $\epsilon_r = 38.897$; $\rho = 1000$ kg/m³

Phantom section: Flat Section

DASY5 Configuration:

- Probe: ES3DV3 - SN3157; ConvF(4.74, 4.74, 4.74) @ 2535 MHz; Calibrated: 2023/4/10
- Sensor-Surface: 3mm (Mechanical Surface Detection)
- Electronics: DAE4 Sn1493; Calibrated: 2023/3/17
- Phantom: Twin SAM; Type: Twin SAM V5.0; Serial: TP:1412
- Measurement SW: DASY52, Version 52.10 (2); SEMCAD X Version 14.6.12 (7470)

Area Scan (11x11x1): Measurement grid: dx=10mm, dy=10mm

Maximum value of SAR (measured) = 0.253 W/kg

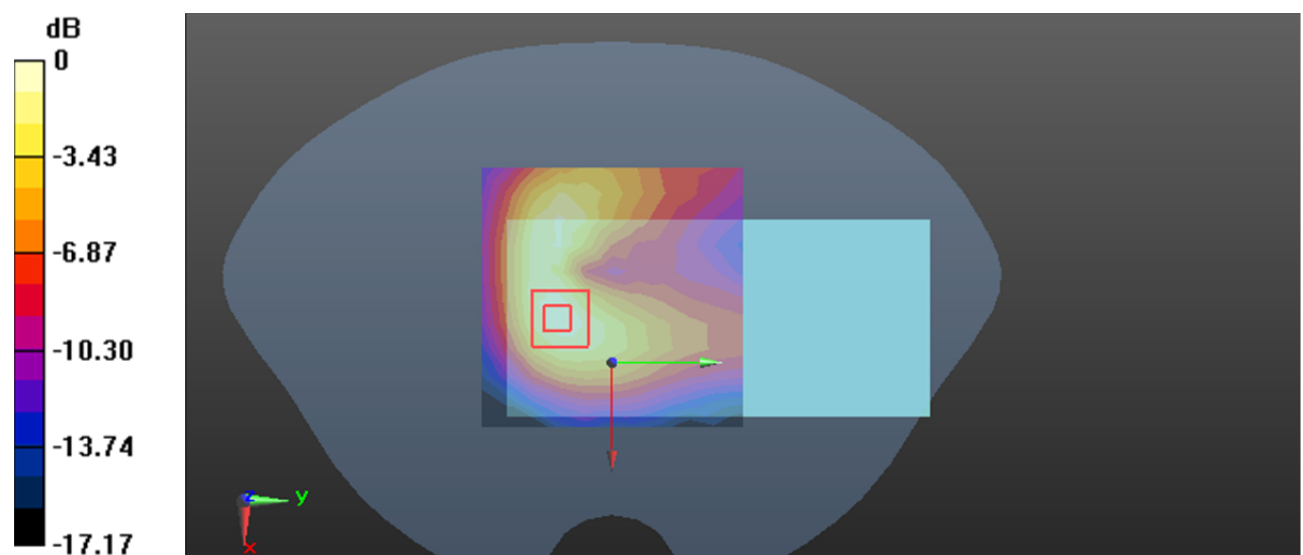
Zoom Scan (7x7x7)/Cube 0: Measurement grid: dx=5mm, dy=5mm, dz=5mm

Reference Value = 5.481 V/m; Power Drift = -0.16 dB

Peak SAR (extrapolated) = 0.319 W/kg

SAR(1 g) = 0.170 W/kg; SAR(10 g) = 0.086 W/kg

Maximum value of SAR (measured) = 0.265 W/kg



0 dB = 0.265 W/kg = -5.77 dBW/kg

Test Plot 216#: 5G NR n7 50%RB Mid_ Body Back**DUT: Mobile Phone; Type: CL9 ; Serial: 2DB3-1**

Communication System: UID 0, Generic FDD-FR1 n 7 (0); Frequency: 2535 MHz;Duty Cycle: 1:1

Medium parameters used: $f = 2535 \text{ MHz}$; $\sigma = 1.878 \text{ S/m}$; $\epsilon_r = 38.897$; $\rho = 1000 \text{ kg/m}^3$

Phantom section: Flat Section

DASY5 Configuration:

- Probe: ES3DV3 - SN3157; ConvF(4.74, 4.74, 4.74) @ 2535 MHz; Calibrated: 2023/4/10
- Sensor-Surface: 3mm (Mechanical Surface Detection)
- Electronics: DAE4 Sn1493; Calibrated: 2023/3/17
- Phantom: Twin SAM; Type: Twin SAM V5.0; Serial: TP:1412
- Measurement SW: DASY52, Version 52.10 (2); SEMCAD X Version 14.6.12 (7470)

Area Scan (11x11x1): Measurement grid: $dx=10\text{mm}$, $dy=10\text{mm}$

Maximum value of SAR (measured) = 0.304 W/kg

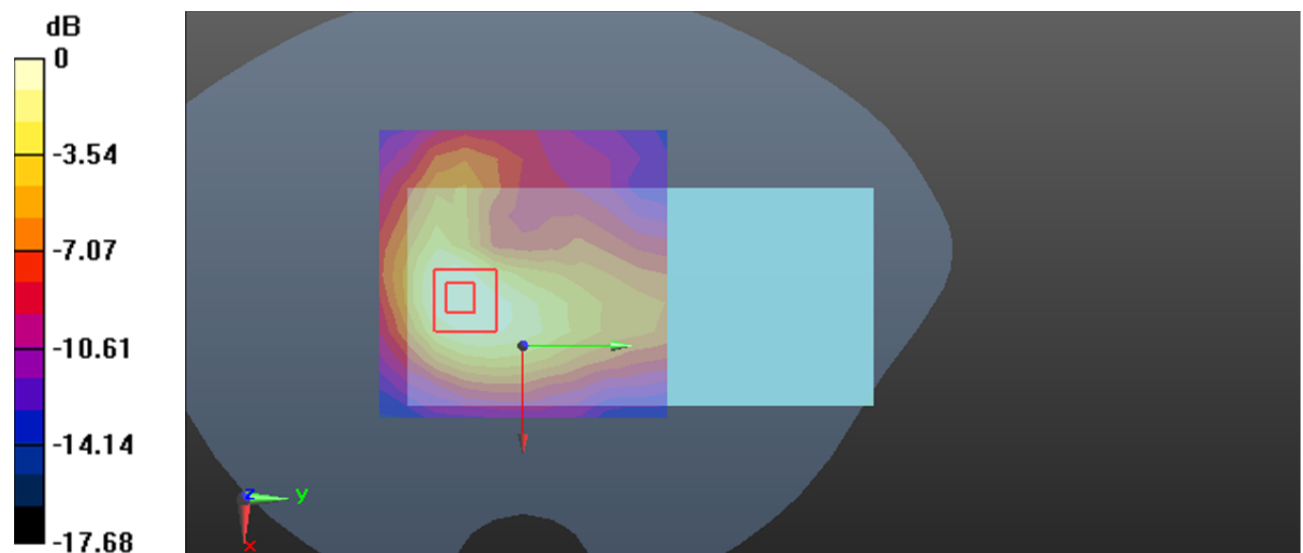
Zoom Scan (7x7x7)/Cube 0: Measurement grid: $dx=5\text{mm}$, $dy=5\text{mm}$, $dz=5\text{mm}$

Reference Value = 6.452 V/m; Power Drift = -0.16 dB

Peak SAR (extrapolated) = 0.313 W/kg

SAR(1 g) = 0.167 W/kg; SAR(10 g) = 0.085 W/kg

Maximum value of SAR (measured) = 0.254 W/kg

 $0 \text{ dB} = 0.254 \text{ W/kg} = -5.95 \text{ dBW/kg}$

Test Plot 217#: 5G NR n7 1RB Mid_Body Left**DUT: Mobile Phone; Type: CL9 ; Serial: 2DB3-1**

Communication System: UID 0, Generic FDD-FR1 n 7 (0); Frequency: 2535 MHz;Duty Cycle: 1:1

Medium parameters used: $f = 2535 \text{ MHz}$; $\sigma = 1.878 \text{ S/m}$; $\epsilon_r = 38.897$; $\rho = 1000 \text{ kg/m}^3$

Phantom section: Flat Section

DASY5 Configuration:

- Probe: ES3DV3 - SN3157; ConvF(4.74, 4.74, 4.74) @ 2535 MHz; Calibrated: 2023/4/10
- Sensor-Surface: 3mm (Mechanical Surface Detection)
- Electronics: DAE4 Sn1493; Calibrated: 2023/3/17
- Phantom: Twin SAM; Type: Twin SAM V5.0; Serial: TP:1412
- Measurement SW: DASY52, Version 52.10 (2); SEMCAD X Version 14.6.12 (7470)

Area Scan (11x11x1): Measurement grid: $dx=10\text{mm}$, $dy=10\text{mm}$

Maximum value of SAR (measured) = 0.0946 W/kg

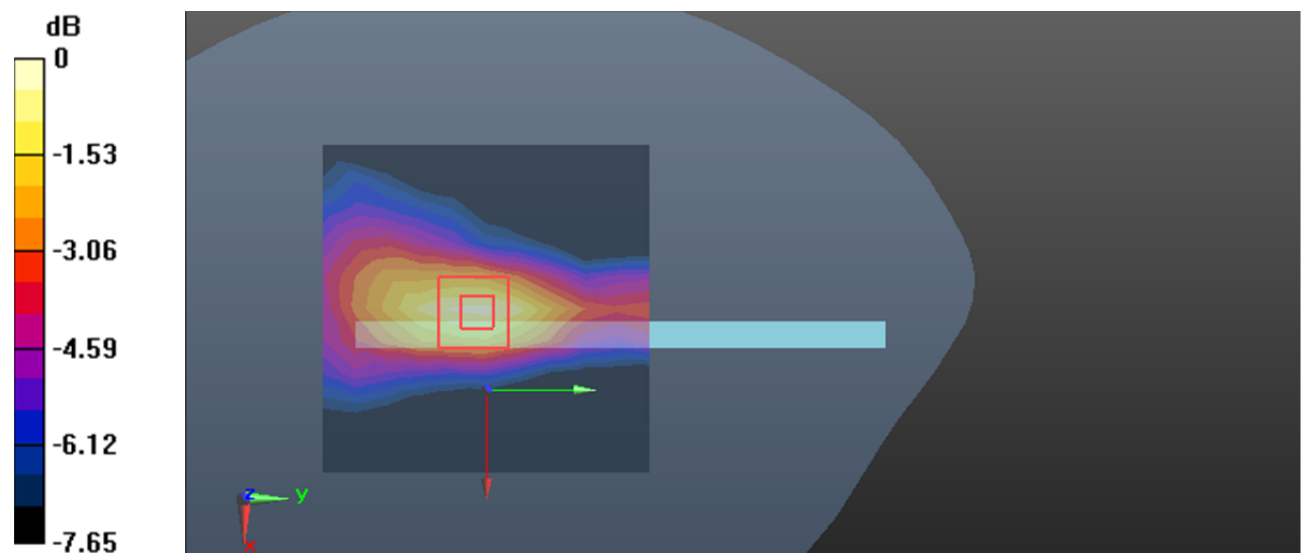
Zoom Scan (7x7x7)/Cube 0: Measurement grid: $dx=5\text{mm}$, $dy=5\text{mm}$, $dz=5\text{mm}$

Reference Value = 5.983 V/m; Power Drift = 0.10 dB

Peak SAR (extrapolated) = 0.121 W/kg

SAR(1 g) = 0.064 W/kg; SAR(10 g) = 0.036 W/kg

Maximum value of SAR (measured) = 0.100 W/kg



0 dB = 0.100 W/kg = -10.00 dBW/kg

Test Plot 218#: 5G NR n7 50%RB Mid_ Body Left**DUT: Mobile Phone; Type: CL9 ; Serial: 2DB3-1**

Communication System: UID 0, Generic FDD-FR1 n 7 (0); Frequency: 2535 MHz;Duty Cycle: 1:1

Medium parameters used: $f = 2535$ MHz; $\sigma = 1.878$ S/m; $\epsilon_r = 38.897$; $\rho = 1000$ kg/m³

Phantom section: Flat Section

DASY5 Configuration:

- Probe: ES3DV3 - SN3157; ConvF(4.74, 4.74, 4.74) @ 2535 MHz; Calibrated: 2023/4/10
- Sensor-Surface: 3mm (Mechanical Surface Detection)
- Electronics: DAE4 Sn1493; Calibrated: 2023/3/17
- Phantom: Twin SAM; Type: Twin SAM V5.0; Serial: TP:1412
- Measurement SW: DASY52, Version 52.10 (2); SEMCAD X Version 14.6.12 (7470)

Area Scan (11x11x1): Measurement grid: dx=10mm, dy=10mm

Maximum value of SAR (measured) = 0.0928 W/kg

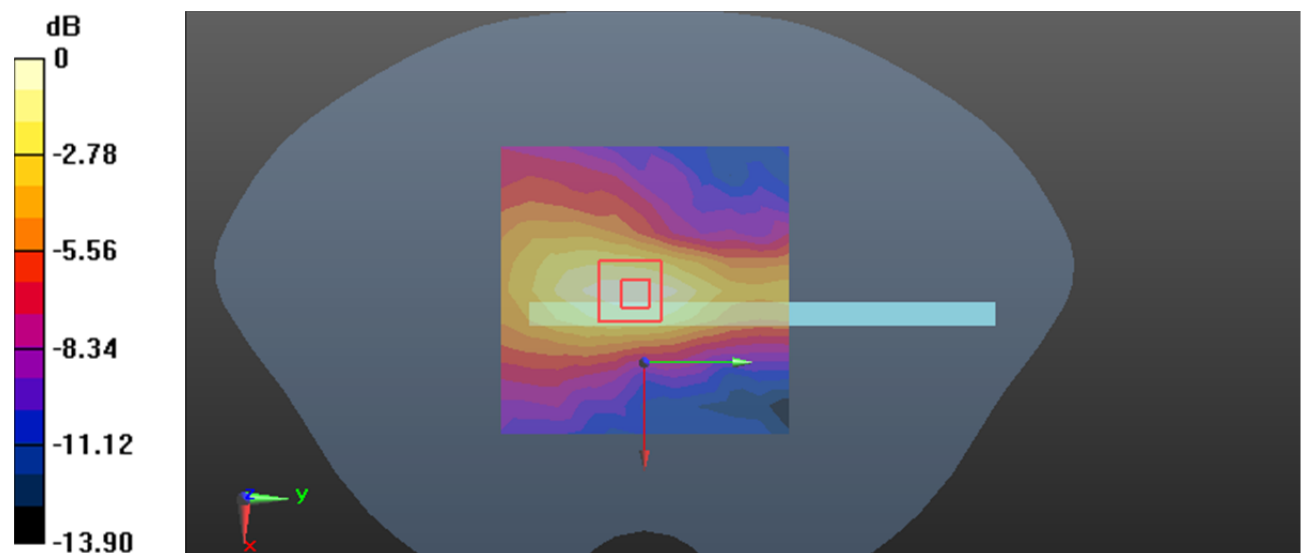
Zoom Scan (7x7x7)/Cube 0: Measurement grid: dx=5mm, dy=5mm, dz=5mm

Reference Value = 5.959 V/m; Power Drift = 0.13 dB

Peak SAR (extrapolated) = 0.117 W/kg

SAR(1 g) = 0.063 W/kg; SAR(10 g) = 0.035 W/kg

Maximum value of SAR (measured) = 0.0969 W/kg



0 dB = 0.0969 W/kg = -10.14 dBW/kg

Test Plot 219#: 5G NR n7 1RB Mid_Body Bottom**DUT: Mobile Phone; Type: CL9 ; Serial: 2DB3-1**

Communication System: UID 0, Generic FDD-FR1 n 7 (0); Frequency: 2535 MHz;Duty Cycle: 1:1

Medium parameters used: $f = 2535$ MHz; $\sigma = 1.878$ S/m; $\epsilon_r = 38.897$; $\rho = 1000$ kg/m³

Phantom section: Flat Section

DASY5 Configuration:

- Probe: ES3DV3 - SN3157; ConvF(4.74, 4.74, 4.74) @ 2535 MHz; Calibrated: 2023/4/10
- Sensor-Surface: 3mm (Mechanical Surface Detection)
- Electronics: DAE4 Sn1493; Calibrated: 2023/3/17
- Phantom: Twin SAM; Type: Twin SAM V5.0; Serial: TP:1412
- Measurement SW: DASY52, Version 52.10 (2); SEMCAD X Version 14.6.12 (7470)

Area Scan (11x11x1): Measurement grid: dx=10mm, dy=10mm

Maximum value of SAR (measured) = 0.420 W/kg

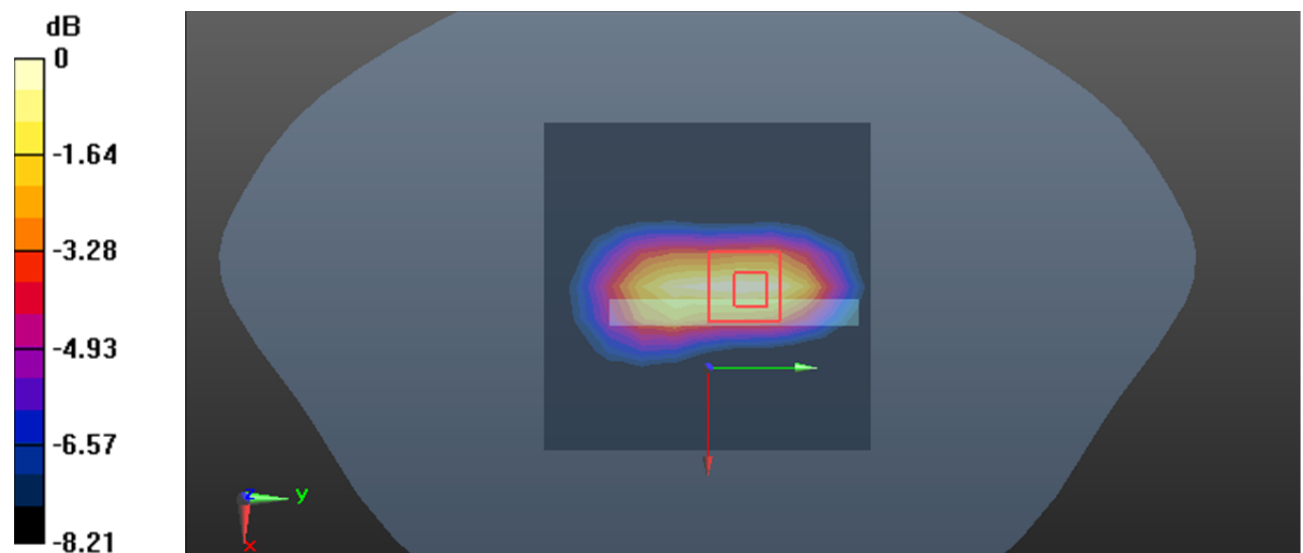
Zoom Scan (7x7x7)/Cube 0: Measurement grid: dx=5mm, dy=5mm, dz=5mm

Reference Value = 12.21 V/m; Power Drift = -0.08 dB

Peak SAR (extrapolated) = 0.516 W/kg

SAR(1 g) = 0.263 W/kg; SAR(10 g) = 0.134 W/kg

Maximum value of SAR (measured) = 0.420 W/kg



0 dB = 0.420 W/kg = -3.77 dBW/kg

Test Plot 220#: 5G NR n7 50%RB Mid_ Body Bottom**DUT: Mobile Phone; Type: CL9 ; Serial: 2DB3-1**

Communication System: UID 0, Generic FDD-FR1 n 7 (0); Frequency: 2535 MHz;Duty Cycle: 1:1

Medium parameters used: $f = 2535 \text{ MHz}$; $\sigma = 1.878 \text{ S/m}$; $\epsilon_r = 38.897$; $\rho = 1000 \text{ kg/m}^3$

Phantom section: Flat Section

DASY5 Configuration:

- Probe: ES3DV3 - SN3157; ConvF(4.74, 4.74, 4.74) @ 2535 MHz; Calibrated: 2023/4/10
- Sensor-Surface: 3mm (Mechanical Surface Detection)
- Electronics: DAE4 Sn1493; Calibrated: 2023/3/17
- Phantom: Twin SAM; Type: Twin SAM V5.0; Serial: TP:1412
- Measurement SW: DASY52, Version 52.10 (2); SEMCAD X Version 14.6.12 (7470)

Area Scan (11x11x1): Measurement grid: $dx=10\text{mm}$, $dy=10\text{mm}$

Maximum value of SAR (measured) = 0.412 W/kg

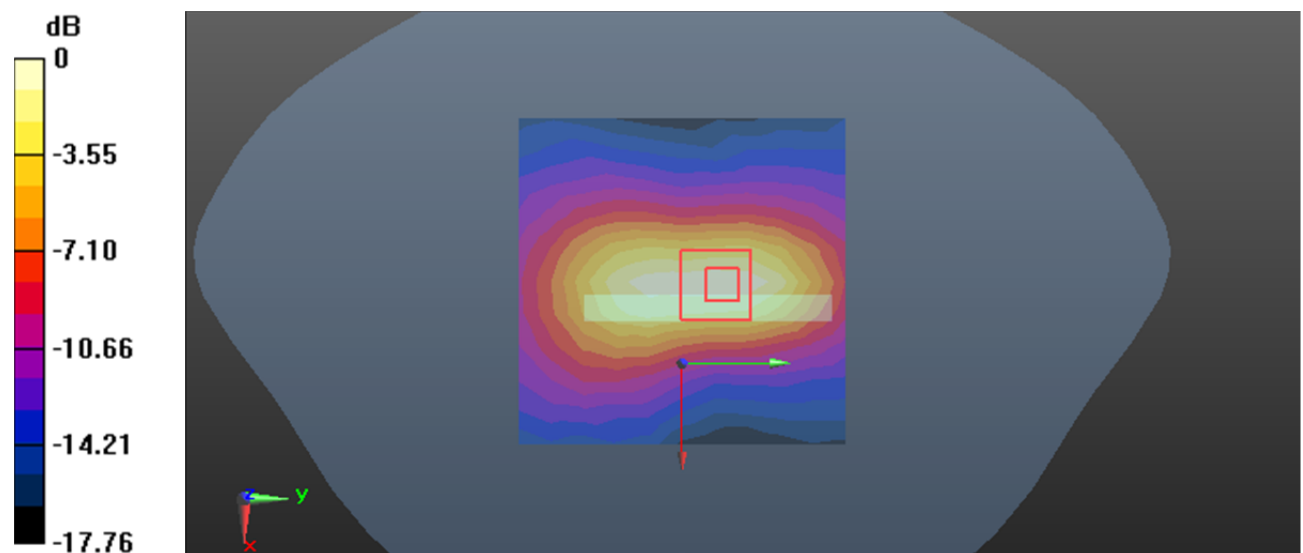
Zoom Scan (7x7x7)/Cube 0: Measurement grid: $dx=5\text{mm}$, $dy=5\text{mm}$, $dz=5\text{mm}$

Reference Value = 12.11 V/m; Power Drift = -0.07 dB

Peak SAR (extrapolated) = 0.510 W/kg

SAR(1 g) = 0.258 W/kg; SAR(10 g) = 0.132 W/kg

Maximum value of SAR (measured) = 0.415 W/kg

 $0 \text{ dB} = 0.415 \text{ W/kg} = -3.82 \text{ dBW/kg}$

Test Plot 221#: 5G NR n12 1RB Mid_ Head Left Cheek**DUT: Mobile Phone; Type: CL9 ; Serial: 2DB3-1**

Communication System: UID 0, Generic FDD-FR1 n 12 (0); Frequency: 707.5 MHz;Duty Cycle: 1:1

Medium parameters used: $f = 707.5$ MHz; $\sigma = 0.867$ S/m; $\epsilon_r = 42.511$; $\rho = 1000$ kg/m³

Phantom section: Left Section

DASY5 Configuration:

- Probe: ES3DV3 - SN3157; ConvF(6.48, 6.48, 6.48) @ 707.5 MHz; Calibrated: 2023/4/10
- Sensor-Surface: 3mm (Mechanical Surface Detection)
- Electronics: DAE4 Sn1493; Calibrated: 2023/3/17
- Phantom: Twin SAM; Type: Twin SAM V5.0; Serial: TP:1412
- Measurement SW: DASY52, Version 52.10 (2); SEMCAD X Version 14.6.12 (7470)

Area Scan (8x10x1): Measurement grid: dx=15mm, dy=15mm

Maximum value of SAR (measured) = 0.00910 W/kg

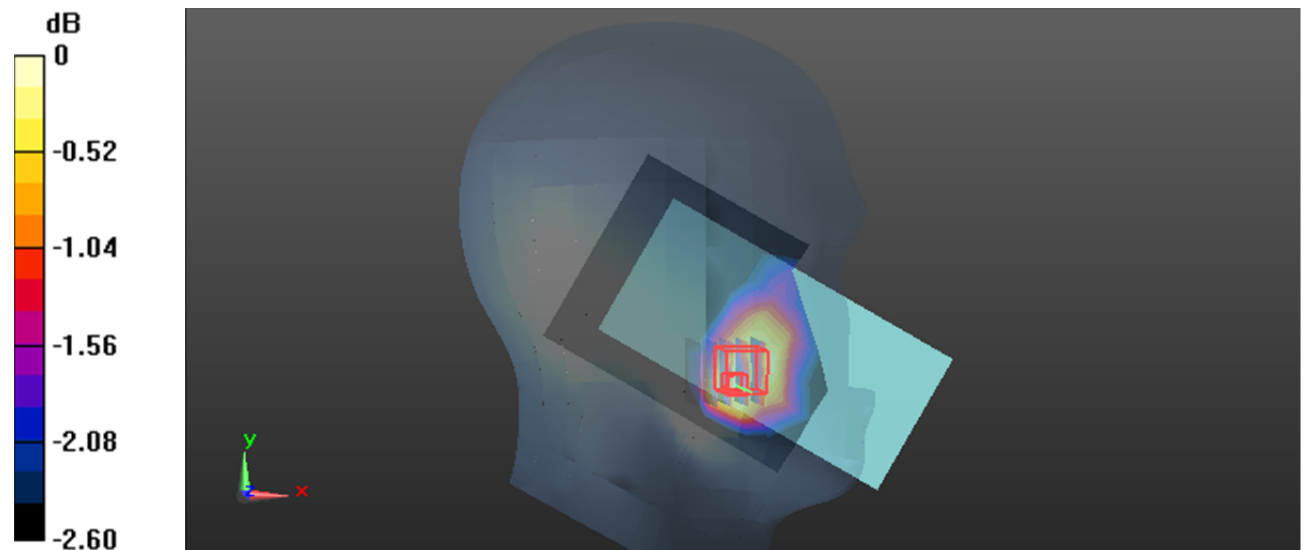
Zoom Scan (5x5x7)/Cube 0: Measurement grid: dx=8mm, dy=8mm, dz=5mm

Reference Value = 1.268 V/m; Power Drift = 3.54 dB

Peak SAR (extrapolated) = 0.0100 W/kg

SAR(1 g) = 0.00749 W/kg; SAR(10 g) = 0.00683 W/kg

Maximum value of SAR (measured) = 0.00884 W/kg



0 dB = 0.00884 W/kg = -20.54 dBW/kg

Test Plot 222#: 5G NR n12 50%RB Mid_ Head Left Cheek**DUT: Mobile Phone; Type: CL9 ; Serial: 2DB3-1**

Communication System: UID 0, Generic FDD-FR1 n 12 (0); Frequency: 707.5 MHz;Duty Cycle: 1:1

Medium parameters used: $f = 707.5$ MHz; $\sigma = 0.867$ S/m; $\epsilon_r = 42.511$; $\rho = 1000$ kg/m³

Phantom section: Left Section

DASY5 Configuration:

- Probe: ES3DV3 - SN3157; ConvF(6.48, 6.48, 6.48) @ 707.5 MHz; Calibrated: 2023/4/10
- Sensor-Surface: 3mm (Mechanical Surface Detection)
- Electronics: DAE4 Sn1493; Calibrated: 2023/3/17
- Phantom: Twin SAM; Type: Twin SAM V5.0; Serial: TP:1412
- Measurement SW: DASY52, Version 52.10 (2); SEMCAD X Version 14.6.12 (7470)

Area Scan (8x10x1): Measurement grid: dx=15mm, dy=15mm

Maximum value of SAR (measured) = 0.00847 W/kg

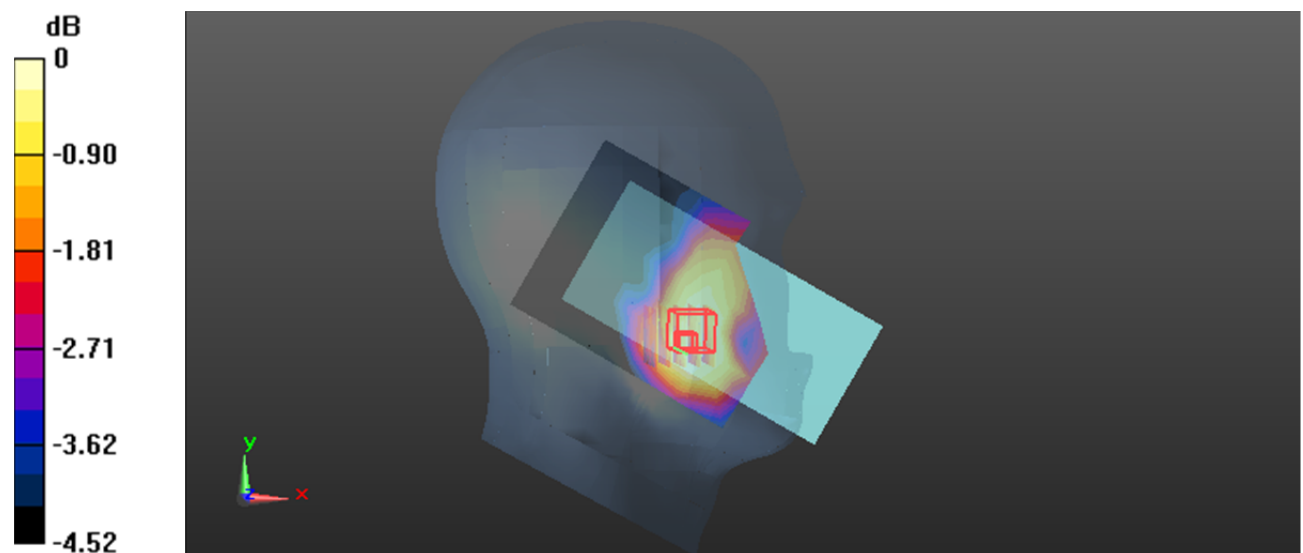
Zoom Scan (5x5x7)/Cube 0: Measurement grid: dx=8mm, dy=8mm, dz=5mm

Reference Value = 1.166 V/m; Power Drift = 0.16 dB

Peak SAR (extrapolated) = 0.00929 W/kg

SAR(1 g) = 0.00733 W/kg; SAR(10 g) = 0.00673 W/kg

Maximum value of SAR (measured) = 0.00817 W/kg



0 dB = 0.00817 W/kg = -20.88 dBW/kg

Test Plot 223#: 5G NR n12 1RB Mid_ Head Left Tilt**DUT: Mobile Phone; Type: CL9 ; Serial: 2DB3-1**

Communication System: UID 0, Generic FDD-FR1 n 12 (0); Frequency: 707.5 MHz; Duty Cycle: 1:1

Medium parameters used: $f = 707.5$ MHz; $\sigma = 0.867$ S/m; $\epsilon_r = 42.511$; $\rho = 1000$ kg/m³

Phantom section: Left Section

DASY5 Configuration:

- Probe: ES3DV3 - SN3157; ConvF(6.48, 6.48, 6.48) @ 707.5 MHz; Calibrated: 2023/4/10
- Sensor-Surface: 3mm (Mechanical Surface Detection)
- Electronics: DAE4 Sn1493; Calibrated: 2023/3/17
- Phantom: Twin SAM; Type: Twin SAM V5.0; Serial: TP:1412
- Measurement SW: DASY52, Version 52.10 (2); SEMCAD X Version 14.6.12 (7470)

Area Scan (8x10x1): Measurement grid: dx=15mm, dy=15mm

Maximum value of SAR (measured) = 0.00536 W/kg

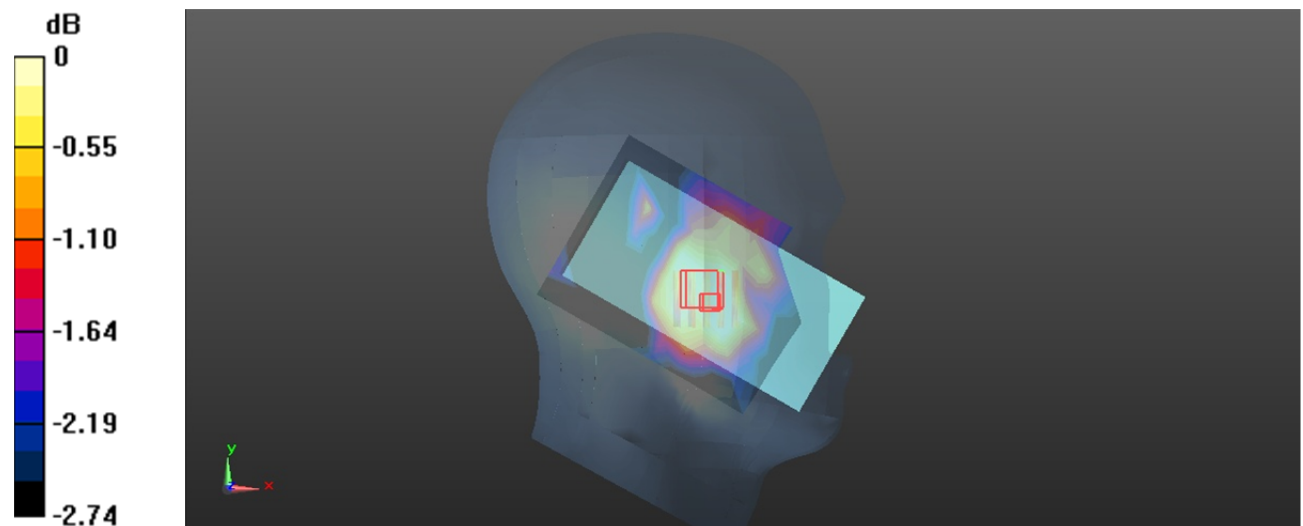
Zoom Scan (5x5x7)/Cube 0: Measurement grid: dx=8mm, dy=8mm, dz=5mm

Reference Value = 1.655 V/m; Power Drift = 0.13 dB

Peak SAR (extrapolated) = 0.00515 W/kg

SAR(1 g) = 0.00435 W/kg; SAR(10 g) = 0.00413 W/kg

Maximum value of SAR (measured) = 0.00487 W/kg



0 dB = 0.00487 W/kg = -23.12 dBW/kg

Test Plot 224#: 5G NR n12 50%RB Mid_ Head Left Tilt**DUT: Mobile Phone; Type: CL9 ; Serial: 2DB3-1**

Communication System: UID 0, Generic FDD-FR1 n 12 (0); Frequency: 707.5 MHz;Duty Cycle: 1:1

Medium parameters used: $f = 707.5$ MHz; $\sigma = 0.867$ S/m; $\epsilon_r = 42.511$; $\rho = 1000$ kg/m³

Phantom section: Left Section

DASY5 Configuration:

- Probe: ES3DV3 - SN3157; ConvF(6.48, 6.48, 6.48) @ 707.5 MHz; Calibrated: 2023/4/10
- Sensor-Surface: 3mm (Mechanical Surface Detection)
- Electronics: DAE4 Sn1493; Calibrated: 2023/3/17
- Phantom: Twin SAM; Type: Twin SAM V5.0; Serial: TP:1412
- Measurement SW: DASY52, Version 52.10 (2); SEMCAD X Version 14.6.12 (7470)

Area Scan (8x10x1): Measurement grid: dx=15mm, dy=15mm

Maximum value of SAR (measured) = 0.00483 W/kg

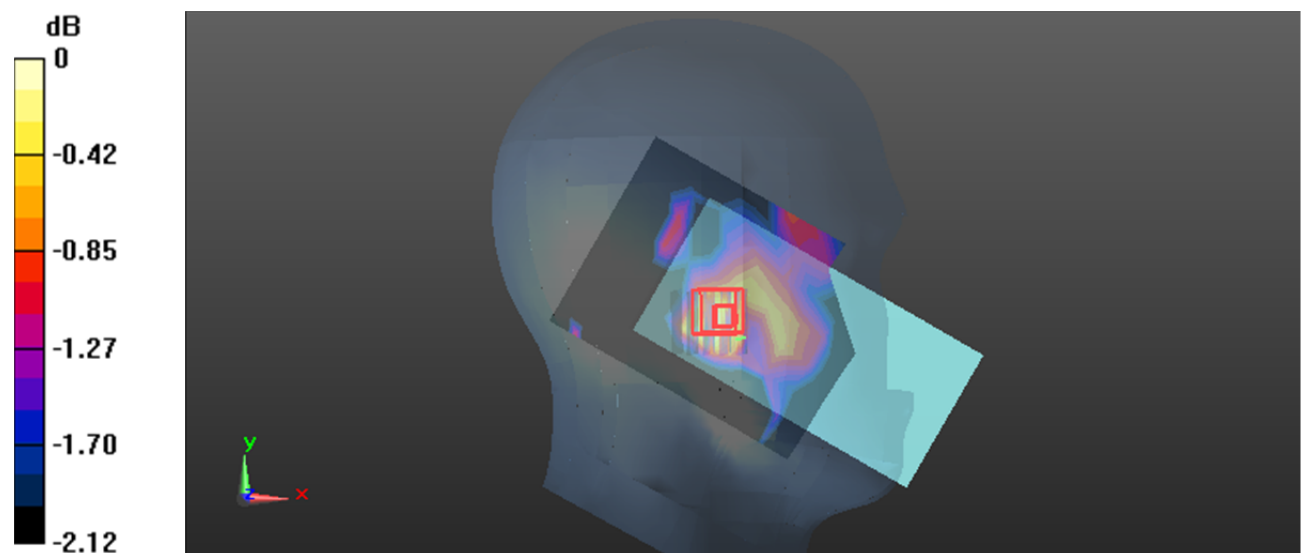
Zoom Scan (5x5x7)/Cube 0: Measurement grid: dx=8mm, dy=8mm, dz=5mm

Reference Value = 1.641 V/m; Power Drift = 0.17 dB

Peak SAR (extrapolated) = 0.00513 W/kg

SAR(1 g) = 0.00432 W/kg; SAR(10 g) = 0.0039 W/kg

Maximum value of SAR (measured) = 0.00481 W/kg



0 dB = 0.00481 W/kg = -23.18 dBW/kg

Test Plot 225#: 5G NR n12 1RB Mid_ Head Right Cheek**DUT: Mobile Phone; Type: CL9 ; Serial: 2DB3-1**

Communication System: UID 0, Generic FDD-FR1 n 12 (0); Frequency: 707.5 MHz;Duty Cycle: 1:1

Medium parameters used: $f = 707.5$ MHz; $\sigma = 0.867$ S/m; $\epsilon_r = 42.511$; $\rho = 1000$ kg/m³

Phantom section: Right Section

DASY5 Configuration:

- Probe: ES3DV3 - SN3157; ConvF(6.48, 6.48, 6.48) @ 707.5 MHz; Calibrated: 2023/4/10
- Sensor-Surface: 3mm (Mechanical Surface Detection)
- Electronics: DAE4 Sn1493; Calibrated: 2023/3/17
- Phantom: Twin SAM; Type: Twin SAM V5.0; Serial: TP:1412
- Measurement SW: DASY52, Version 52.10 (2); SEMCAD X Version 14.6.12 (7470)

Area Scan (8x10x1): Measurement grid: dx=15mm, dy=15mm

Maximum value of SAR (measured) = 0.0121 W/kg

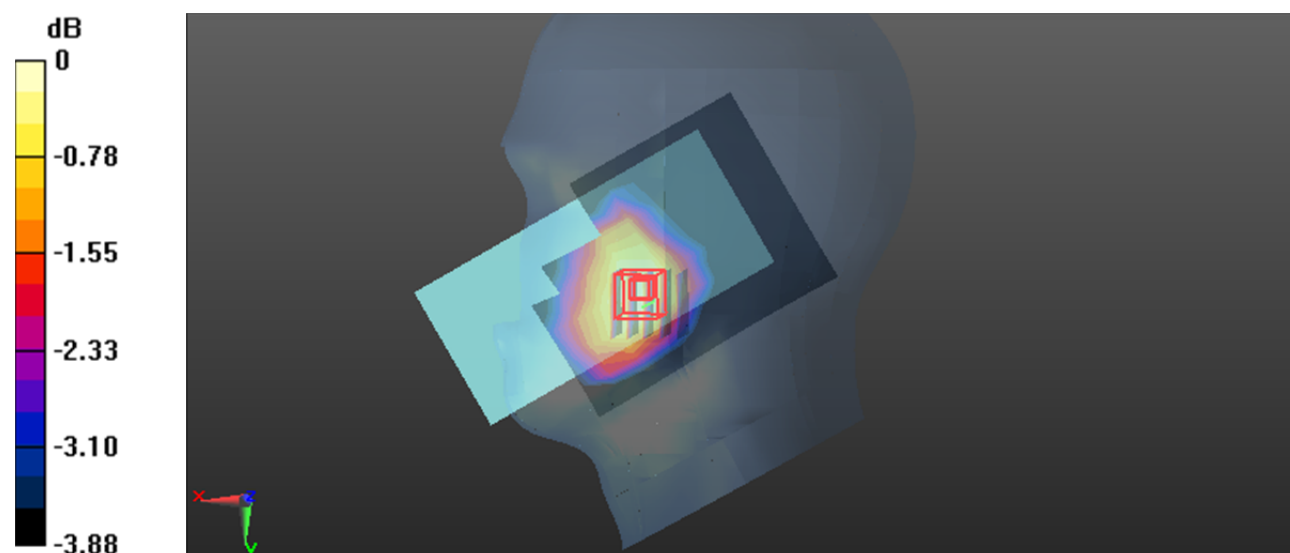
Zoom Scan (5x5x7)/Cube 0: Measurement grid: dx=8mm, dy=8mm, dz=5mm

Reference Value = 1.156 V/m; Power Drift = 0.11 dB

Peak SAR (extrapolated) = 0.0130 W/kg

SAR(1 g) = 0.00997 W/kg; SAR(10 g) = 0.00816 W/kg

Maximum value of SAR (measured) = 0.0118 W/kg



Test Plot 226#: 5G NR n12 50%RB Mid_ Head Right Cheek**DUT: Mobile Phone; Type: CL9 ; Serial: 2DB3-1**

Communication System: UID 0, Generic FDD-FR1 n 12 (0); Frequency: 707.5 MHz;Duty Cycle: 1:1

Medium parameters used: $f = 707.5$ MHz; $\sigma = 0.867$ S/m; $\epsilon_r = 42.511$; $\rho = 1000$ kg/m³

Phantom section: Right Section

DASY5 Configuration:

- Probe: ES3DV3 - SN3157; ConvF(6.48, 6.48, 6.48) @ 707.5 MHz; Calibrated: 2023/4/10
- Sensor-Surface: 3mm (Mechanical Surface Detection)
- Electronics: DAE4 Sn1493; Calibrated: 2023/3/17
- Phantom: Twin SAM; Type: Twin SAM V5.0; Serial: TP:1412
- Measurement SW: DASY52, Version 52.10 (2); SEMCAD X Version 14.6.12 (7470)

Area Scan (8x10x1): Measurement grid: dx=15mm, dy=15mm

Maximum value of SAR (measured) = 0.0126 W/kg

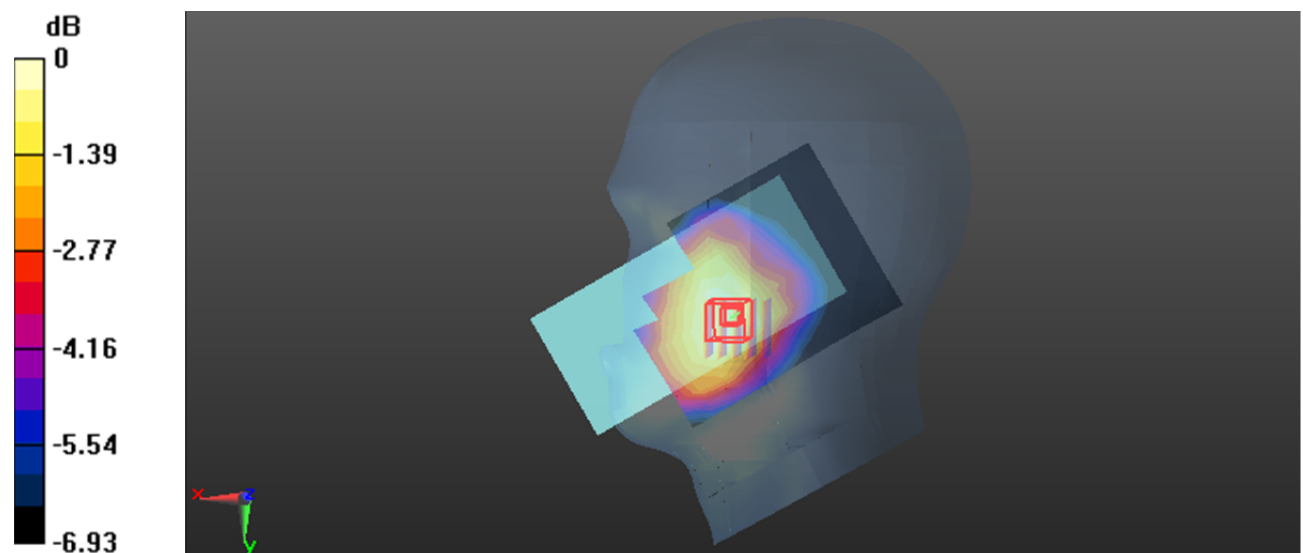
Zoom Scan (5x5x7)/Cube 0: Measurement grid: dx=8mm, dy=8mm, dz=5mm

Reference Value = 1.169 V/m; Power Drift = 0.19 dB

Peak SAR (extrapolated) = 0.0140 W/kg

SAR(1 g) = 0.011 W/kg; SAR(10 g) = 0.00844 W/kg

Maximum value of SAR (measured) = 0.0123 W/kg



0 dB = 0.0123 W/kg = -19.10 dBW/kg

Test Plot 227#: 5G NR n12 1RB Mid_ Head Right Tilt**DUT: Mobile Phone; Type: CL9 ; Serial: 2DB3-1**

Communication System: UID 0, Generic FDD-FR1 n 12 (0); Frequency: 707.5 MHz;Duty Cycle: 1:1

Medium parameters used: $f = 707.5$ MHz; $\sigma = 0.867$ S/m; $\epsilon_r = 42.511$; $\rho = 1000$ kg/m³

Phantom section: Right Section

DASY5 Configuration:

- Probe: ES3DV3 - SN3157; ConvF(6.48, 6.48, 6.48) @ 707.5 MHz; Calibrated: 2023/4/10
- Sensor-Surface: 3mm (Mechanical Surface Detection)
- Electronics: DAE4 Sn1493; Calibrated: 2023/3/17
- Phantom: Twin SAM; Type: Twin SAM V5.0; Serial: TP:1412
- Measurement SW: DASY52, Version 52.10 (2); SEMCAD X Version 14.6.12 (7470)

Area Scan (8x10x1): Measurement grid: dx=15mm, dy=15mm

Maximum value of SAR (measured) = 0.00653 W/kg

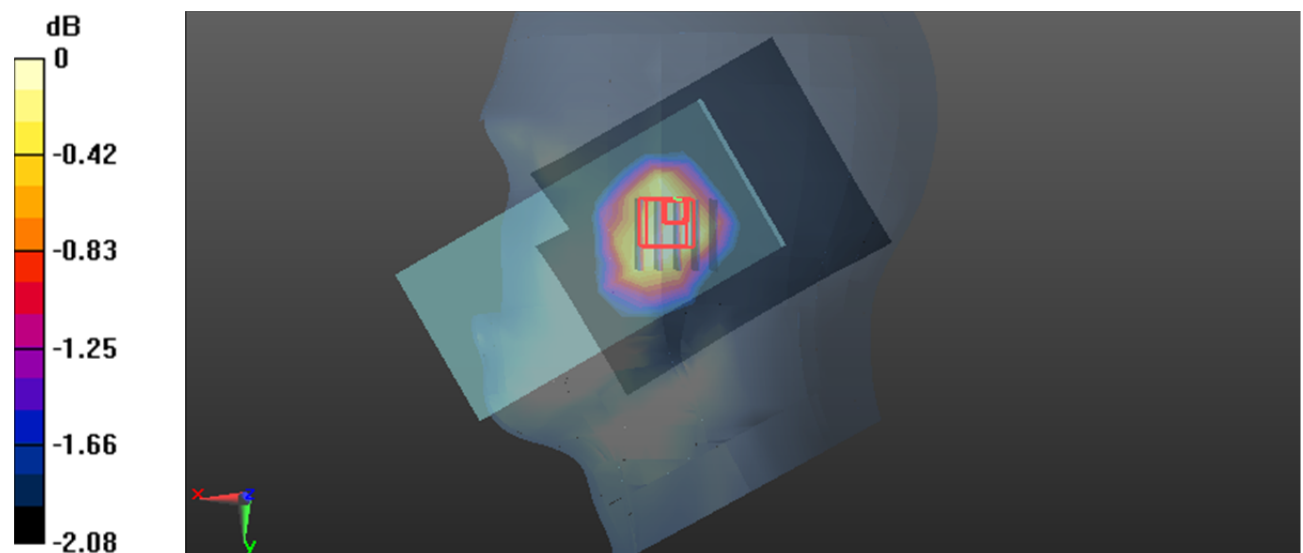
Zoom Scan (5x5x7)/Cube 0: Measurement grid: dx=8mm, dy=8mm, dz=5mm

Reference Value = 1.587 V/m; Power Drift = 0.17 dB

Peak SAR (extrapolated) = 0.00694 W/kg

SAR(1 g) = 0.00581 W/kg; SAR(10 g) = 0.00513 W/kg

Maximum value of SAR (measured) = 0.00650 W/kg



0 dB = 0.00650 W/kg = -21.87 dBW/kg

Test Plot 228#: 5G NR n12 50%RB Mid_ Head Right Tilt**DUT: Mobile Phone; Type: CL9 ; Serial: 2DB3-1**

Communication System: UID 0, Generic FDD-FR1 n 12 (0); Frequency: 707.5 MHz;Duty Cycle: 1:1

Medium parameters used: $f = 707.5$ MHz; $\sigma = 0.867$ S/m; $\epsilon_r = 42.511$; $\rho = 1000$ kg/m³

Phantom section: Right Section

DASY5 Configuration:

- Probe: ES3DV3 - SN3157; ConvF(6.48, 6.48, 6.48) @ 707.5 MHz; Calibrated: 2023/4/10
- Sensor-Surface: 3mm (Mechanical Surface Detection)
- Electronics: DAE4 Sn1493; Calibrated: 2023/3/17
- Phantom: Twin SAM; Type: Twin SAM V5.0; Serial: TP:1412
- Measurement SW: DASY52, Version 52.10 (2); SEMCAD X Version 14.6.12 (7470)

Area Scan (8x10x1): Measurement grid: dx=15mm, dy=15mm

Maximum value of SAR (measured) = 0.00695 W/kg

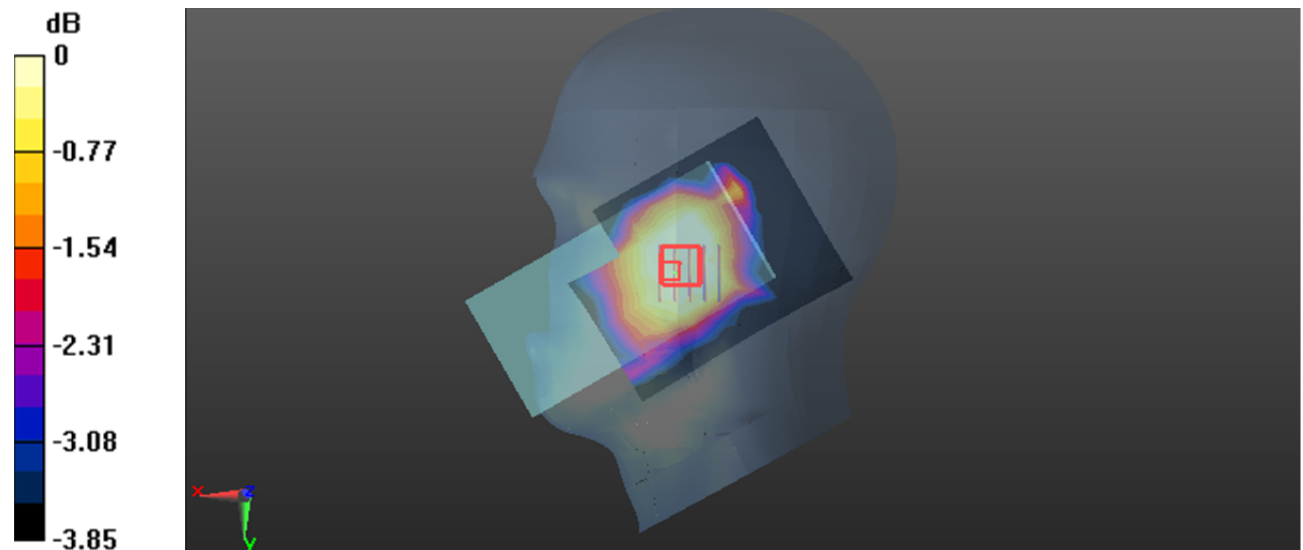
Zoom Scan (5x5x7)/Cube 0: Measurement grid: dx=8mm, dy=8mm, dz=5mm

Reference Value = 1.866 V/m; Power Drift = 0.15 dB

Peak SAR (extrapolated) = 0.00676 W/kg

SAR(1 g) = 0.00562 W/kg; SAR(10 g) = 0.00493 W/kg

Maximum value of SAR (measured) = 0.00614 W/kg



0 dB = 0.00614 W/kg = -22.12 dBW/kg

Test Plot 229#: 5G NR n12 1RB Mid_Body Front**DUT: Mobile Phone; Type: CL9 ; Serial: 2DB3-1**

Communication System: UID 0, Generic FDD-FR1 n 12 (0); Frequency: 707.5 MHz;Duty Cycle: 1:1

Medium parameters used: $f = 707.5$ MHz; $\sigma = 0.867$ S/m; $\epsilon_r = 42.511$; $\rho = 1000$ kg/m³

Phantom section: Flat Section

DASY5 Configuration:

- Probe: ES3DV3 - SN3157; ConvF(6.48, 6.48, 6.48) @ 707.5 MHz; Calibrated: 2023/4/10
- Sensor-Surface: 3mm (Mechanical Surface Detection)
- Electronics: DAE4 Sn1493; Calibrated: 2023/3/17
- Phantom: Twin SAM; Type: Twin SAM V5.0; Serial: TP:1412
- Measurement SW: DASY52, Version 52.10 (2); SEMCAD X Version 14.6.12 (7470)

Area Scan (8x10x1): Measurement grid: dx=15mm, dy=15mm

Maximum value of SAR (measured) = 0.0175 W/kg

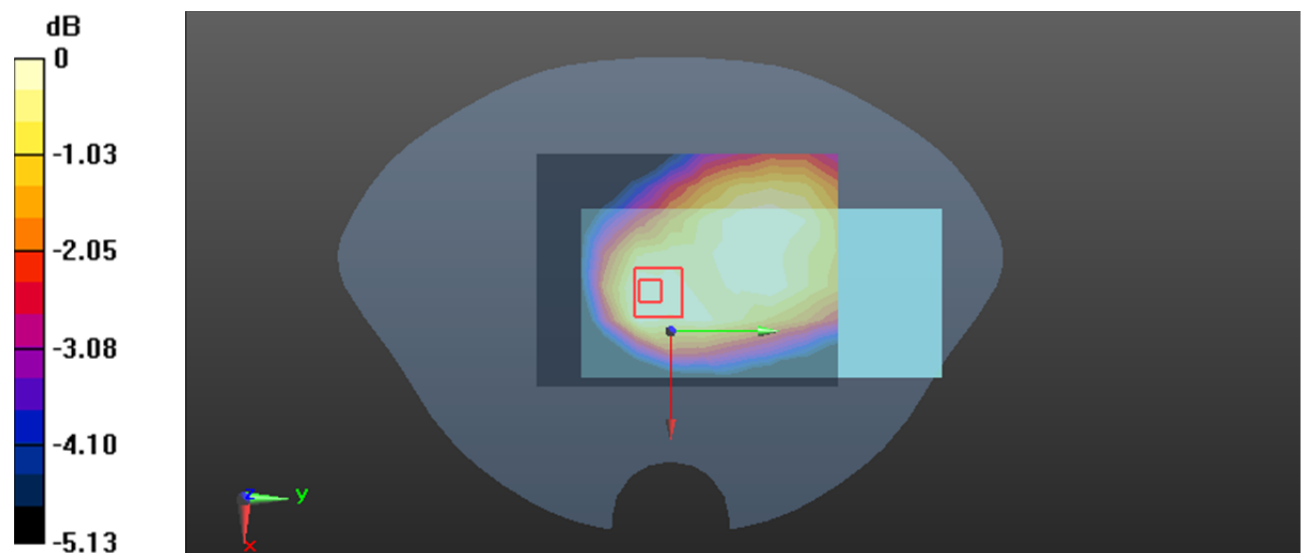
Zoom Scan (5x5x7)/Cube 0: Measurement grid: dx=8mm, dy=8mm, dz=5mm

Reference Value = 3.874 V/m; Power Drift = 0.07 dB

Peak SAR (extrapolated) = 0.0210 W/kg

SAR(1 g) = 0.013 W/kg; SAR(10 g) = 0.00948 W/kg

Maximum value of SAR (measured) = 0.0174 W/kg



0 dB = 0.0174 W/kg = -17.59 dBW/kg

Test Plot 230#: 5G NR n12 50%RB Mid_Body Front**DUT: Mobile Phone; Type: CL9 ; Serial: 2DB3-1**

Communication System: UID 0, Generic FDD-FR1 n 12 (0); Frequency: 707.5 MHz;Duty Cycle: 1:1

Medium parameters used: $f = 707.5$ MHz; $\sigma = 0.867$ S/m; $\epsilon_r = 42.511$; $\rho = 1000$ kg/m³

Phantom section: Flat Section

DASY5 Configuration:

- Probe: ES3DV3 - SN3157; ConvF(6.48, 6.48, 6.48) @ 707.5 MHz; Calibrated: 2023/4/10
- Sensor-Surface: 3mm (Mechanical Surface Detection)
- Electronics: DAE4 Sn1493; Calibrated: 2023/3/17
- Phantom: Twin SAM; Type: Twin SAM V5.0; Serial: TP:1412
- Measurement SW: DASY52, Version 52.10 (2); SEMCAD X Version 14.6.12 (7470)

Area Scan (8x10x1): Measurement grid: dx=15mm, dy=15mm

Maximum value of SAR (measured) = 0.0185 W/kg

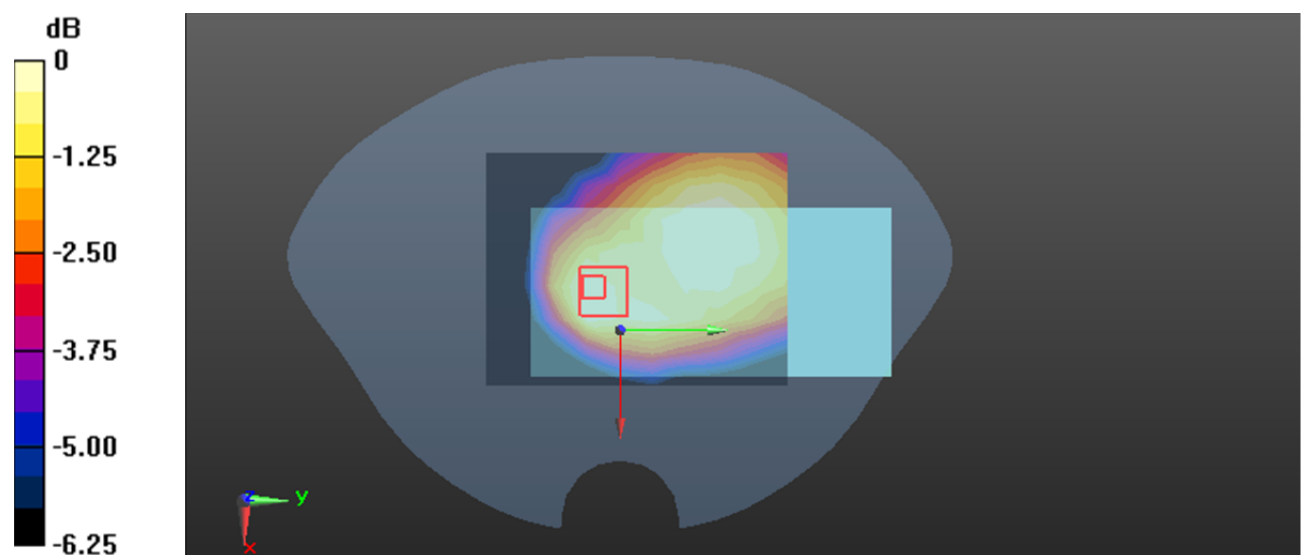
Zoom Scan (5x5x7)/Cube 0: Measurement grid: dx=8mm, dy=8mm, dz=5mm

Reference Value = 3.816 V/m; Power Drift = 0.17 dB

Peak SAR (extrapolated) = 0.0220 W/kg

SAR(1 g) = 0.014 W/kg; SAR(10 g) = 0.00979 W/kg

Maximum value of SAR (measured) = 0.0181 W/kg



0 dB = 0.0181 W/kg = -17.42 dBW/kg

Test Plot 231#: 5G NR n12 1RB Mid_Body Back**DUT: Mobile Phone; Type: CL9 ; Serial: 2DB3-1**

Communication System: UID 0, Generic FDD-FR1 n 12 (0); Frequency: 707.5 MHz;Duty Cycle: 1:1

Medium parameters used: $f = 707.5$ MHz; $\sigma = 0.867$ S/m; $\epsilon_r = 42.511$; $\rho = 1000$ kg/m³

Phantom section: Flat Section

DASY5 Configuration:

- Probe: ES3DV3 - SN3157; ConvF(6.48, 6.48, 6.48) @ 707.5 MHz; Calibrated: 2023/4/10
- Sensor-Surface: 3mm (Mechanical Surface Detection)
- Electronics: DAE4 Sn1493; Calibrated: 2023/3/17
- Phantom: Twin SAM; Type: Twin SAM V5.0; Serial: TP:1412
- Measurement SW: DASY52, Version 52.10 (2); SEMCAD X Version 14.6.12 (7470)

Area Scan (8x10x1): Measurement grid: dx=15mm, dy=15mm

Maximum value of SAR (measured) = 0.0233 W/kg

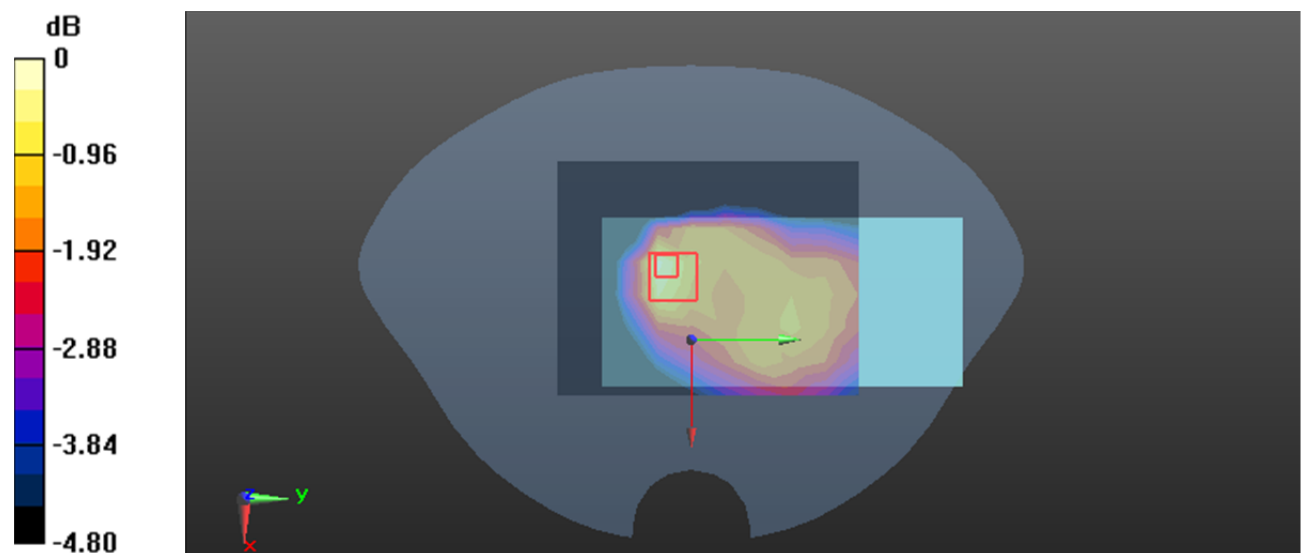
Zoom Scan (5x5x7)/Cube 0: Measurement grid: dx=8mm, dy=8mm, dz=5mm

Reference Value = 4.113 V/m; Power Drift = 0.03 dB

Peak SAR (extrapolated) = 0.0290 W/kg

SAR(1 g) = 0.018 W/kg; SAR(10 g) = 0.012 W/kg

Maximum value of SAR (measured) = 0.0243 W/kg



0 dB = 0.0243 W/kg = -16.14 dBW/kg

Test Plot 232#: 5G NR n12 50%RB Mid_Body Back**DUT: Mobile Phone; Type: CL9 ; Serial: 2DB3-1**

Communication System: UID 0, Generic FDD-FR1 n 12 (0); Frequency: 707.5 MHz;Duty Cycle: 1:1

Medium parameters used: $f = 707.5$ MHz; $\sigma = 0.867$ S/m; $\epsilon_r = 42.511$; $\rho = 1000$ kg/m³

Phantom section: Flat Section

DASY5 Configuration:

- Probe: ES3DV3 - SN3157; ConvF(6.48, 6.48, 6.48) @ 707.5 MHz; Calibrated: 2023/4/10
- Sensor-Surface: 3mm (Mechanical Surface Detection)
- Electronics: DAE4 Sn1493; Calibrated: 2023/3/17
- Phantom: Twin SAM; Type: Twin SAM V5.0; Serial: TP:1412
- Measurement SW: DASY52, Version 52.10 (2); SEMCAD X Version 14.6.12 (7470)

Area Scan (8x10x1): Measurement grid: dx=15mm, dy=15mm

Maximum value of SAR (measured) = 0.0228 W/kg

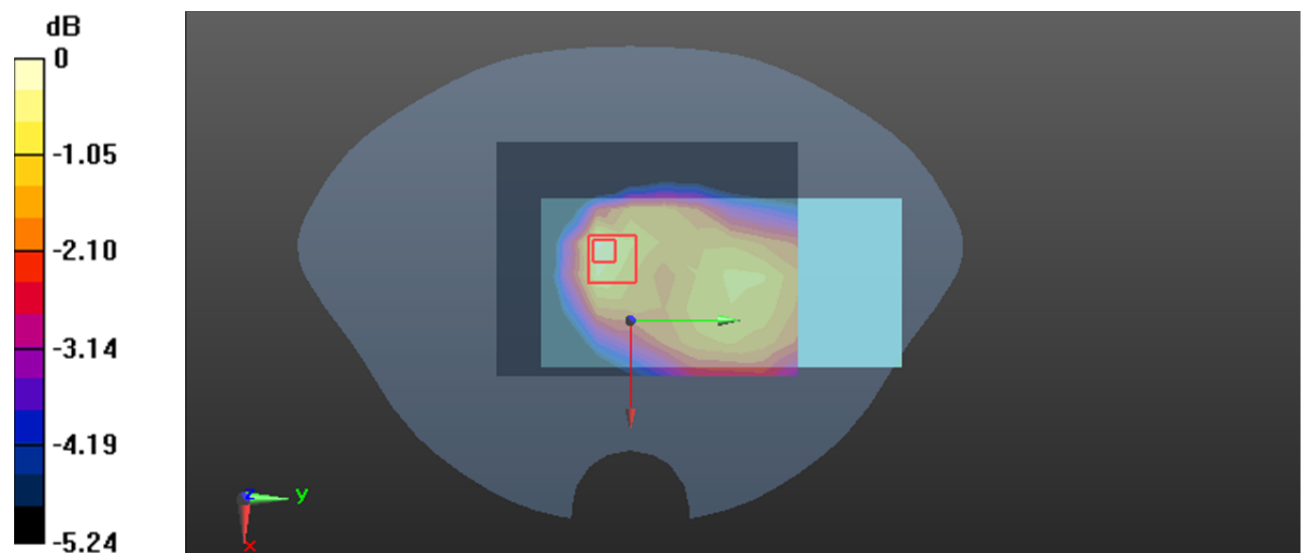
Zoom Scan (5x5x7)/Cube 0: Measurement grid: dx=8mm, dy=8mm, dz=5mm

Reference Value = 4.153 V/m; Power Drift = 0.16 dB

Peak SAR (extrapolated) = 0.0290 W/kg

SAR(1 g) = 0.017 W/kg; SAR(10 g) = 0.012 W/kg

Maximum value of SAR (measured) = 0.0241 W/kg



0 dB = 0.0241 W/kg = -16.18 dBW/kg

Test Plot 233#: 5G NR n12 1RB Mid_Body Right**DUT: Mobile Phone; Type: CL9 ; Serial: 2DB3-1**

Communication System: UID 0, Generic FDD-FR1 n 12 (0); Frequency: 707.5 MHz;Duty Cycle: 1:1

Medium parameters used: $f = 707.5$ MHz; $\sigma = 0.867$ S/m; $\epsilon_r = 42.511$; $\rho = 1000$ kg/m³

Phantom section: Flat Section

DASY5 Configuration:

- Probe: ES3DV3 - SN3157; ConvF(6.48, 6.48, 6.48) @ 707.5 MHz; Calibrated: 2023/4/10
- Sensor-Surface: 3mm (Mechanical Surface Detection)
- Electronics: DAE4 Sn1493; Calibrated: 2023/3/17
- Phantom: Twin SAM; Type: Twin SAM V5.0; Serial: TP:1412
- Measurement SW: DASY52, Version 52.10 (2); SEMCAD X Version 14.6.12 (7470)

Area Scan (8x10x1): Measurement grid: dx=15mm, dy=15mm

Maximum value of SAR (measured) = 0.0414 W/kg

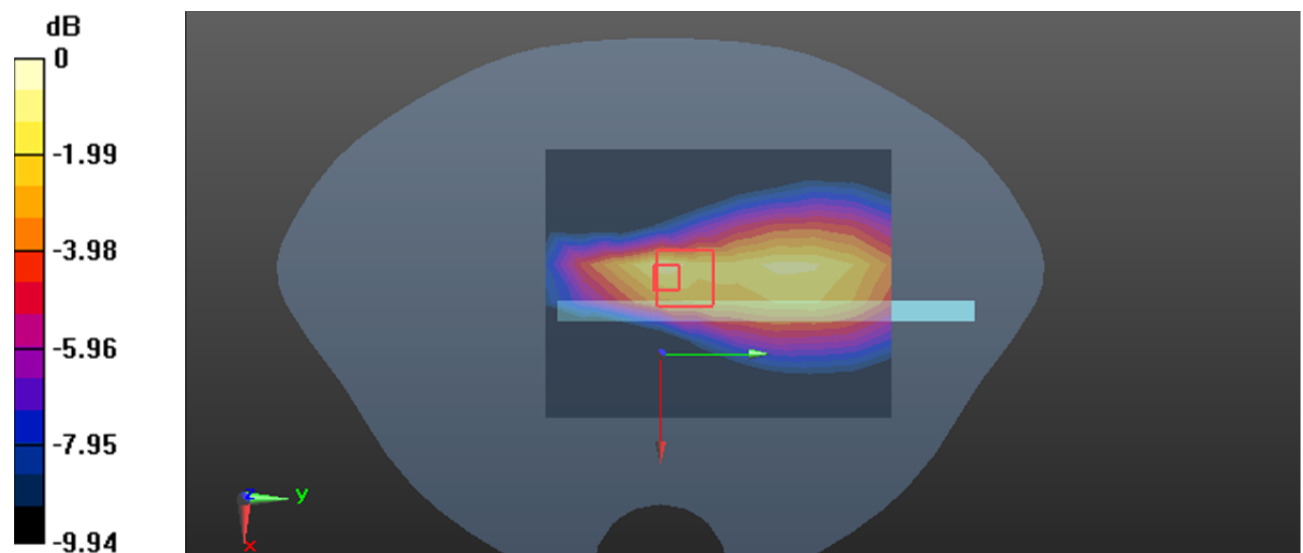
Zoom Scan (5x5x7)/Cube 0: Measurement grid: dx=8mm, dy=8mm, dz=5mm

Reference Value = 4.836 V/m; Power Drift = -0.01 dB

Peak SAR (extrapolated) = 0.0480 W/kg

SAR(1 g) = 0.030 W/kg; SAR(10 g) = 0.021 W/kg

Maximum value of SAR (measured) = 0.0408 W/kg



0 dB = 0.0408 W/kg = -13.89 dBW/kg