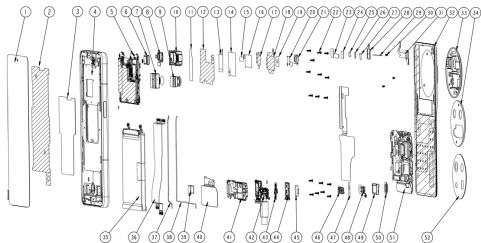


TECNO

TECNO CAMON 30 Premier 5G
User Manual

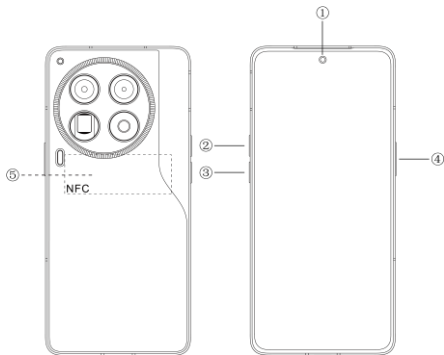
Exploded diagram specification



1	OLED	2	FC HEAT FILM
3	VC	4	MID COVER ASM RNM
5	MAIN PCBA	6	UP SPK
7	OIS 50M CAMERA	8	F CAMERA
9	UW 50M CAMERA	10	50M 3X FOLD CAMERA
11	RFFPA FOIL	12	BB FOIL
13	50M OIS COPPER	14	MAIN FPC CON COPPER
15	WCN FOIL	16	CAM CON FB
17	50M UW COPPER	18	CAM COP FOIL
19	50M UW CAM CON FB	20	CAMERA BRACKET PET
21	CAMERA BRACKET	22	MACHINE SCREW
23	F CAM HOT FLIM	24	HEAT DISSIPATION RUBBER
25	DECO CON FOAM	26	LCD CON FOAM
27	REAR FLASH CON FB	28	R CAM SEAL FOAM
29	HW PRO MYLAR	30	MC SCREW
31	REAR FLASH FPC	32	BATTERY COVER
33	CNC CAM DECO 2	34	CNC CAM DECO 1
35	BATTERY	36	MAIN FPC
37	CABLE 1	38	CABLE 2
39	MOTOR	40	NFC
41	BOX SPEAKER	42	SUB PCBA
43	ANT SUB PCBA	44	SIM TRAY
45	LCD SEAL RUBBER	46	USB RUBBER

47	CABLE CON FB	48	FM
49	DOWN SPEAKER	50	R FLASH DECO ASM
51	LOWHOUSING ASM	52	LENS

Know your phone



1. Front camera
2. Volume + button
3. Volume - button
4. Power button
5. NFC

SIM card installation

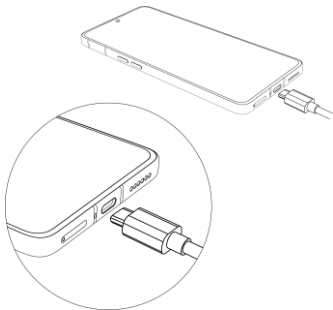
1. Power off your phone.
2. Refer to the following picture for SIM card installation.



Charging the phone

You can charge your phone with a charger or by connecting it to a computer using a USB cable (comes with the phone).

Use only TECNO chargers and cables. Other chargers or cables may damage the phone and invalidate its warranty.



FCC Caution

Labelling requirements.

This device complies with Part 15 of the FCC Rules. Operation is subject to the following two conditions:

- (1) This device may not cause harmful interference.
- (2) This device must accept any interference received, including interference that may cause undesired operation.

Information to user.

Any changes or modifications not expressly approved by the party responsible for compliance could void the user's authority to operate the device.

Information to the user.

Note: This device has been tested and found to comply with the limits for a Class B digital device, pursuant to part 15 of the FCC Rules. These limits are designed to provide reasonable protection against harmful interference in a residential installation. This device generates, uses and may radiate radio frequency energy and, if not installed and used in accordance with the instructions, may cause harmful interference to radio communications. However, there is no guarantee that interference will not occur in a particular installation. If this device does cause harmful interference to radio or television reception (able to be determined by turning the device off and on), the user is encouraged to try to correct the interference by one or more of the following measures:

- Reorient or relocate the receiving antenna.
- Increase the separation between the device and receiver.
- Connect the device to an outlet on a circuit different from that to which the receiver is connected.
- Consult the dealer or an experienced radio/TV

technician for help.

Specific Absorption Rate (SAR) information:

This mobile phone meets the government's requirements for exposure to radio waves. The guidelines are based on standards developed by independent scientific organizations through periodic and thorough evaluation of scientific studies. The standards include a substantial safety margin designed to assure the safety of all persons regardless of age or health.

FCC RF Exposure Information and Statement. The SAR limit of USA (FCC) is 1.6 W/kg averaged over one gram of tissue. Device types: CL9(FCC ID: 2ADYY-CL9) has also been tested against this SAR limit. The highest SAR value reported under this standard during product certification for use at the ear is 0.65W/kg and when properly worn on the body is 0.79W/kg.

Body-worn Operation

This device was tested for typical body-worn operations. To comply with RF exposure requirements, a minimum separation distance of 1.0 cm must be maintained between the user's body and the handset, including the antenna. Third-party belt-clips, holsters, and similar accessories used by this device should not contain any metallic components. Body-worn accessories that do not meet these requirements may not comply with RF exposure requirements and should be avoided. Use only the supplied or an approved antenna.

TECNO

HiOS runs on Android™ OS.
Android is a trademark of Google LLC.