

## Feature

- ※ High gain
- ※ Omani-directional
- ※ Wide bandwidth

## Application

※ GSM850/900/DCS/PCS/WCDMA B1/B2/B4/B5/B8

LTE B1/B2/B3/B4/B5/B7/B8/B12/B17/B20/B28/B38/B40/B41/B42/B66

NR Mode N1/N3/N5/N7/N8/N12/N20/N28/N38/N40/N41/N66/N77/N78

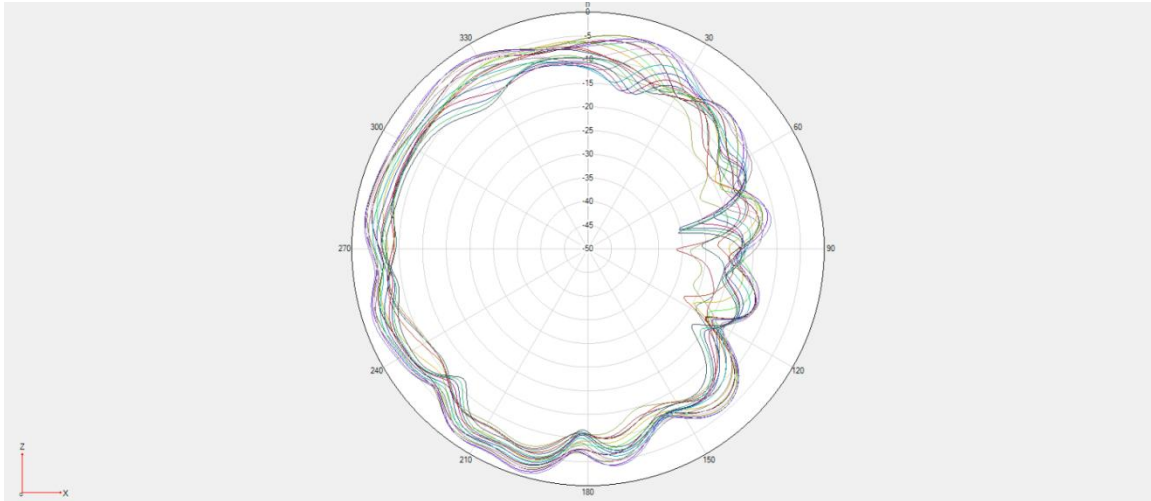
Name and address of the antenna manufacturer	Model number of the antenna
<p style="text-align: center;">Speed Wireless Technical Co., LTD Company Address: No.99, Weixin Road SIP Suzhou JiangSu Province China</p>	<p style="text-align: center;">CL8-ANT0-SPD CL8-ANT1-SPD CL8-ANT2-SPD CL8-ANT3-SPD CL8-ANT4-SPD CL8-ANT5-SPD CL8-ANT6-SPD CL8-ANT7-SPD CL8-ANT8-SPD CL8-ANT12-SPD CL8-ANT13-SPD CL8-ANT14-SPD CL8-ANT15-SPD</p>

Transmitter Frequency	GSM 850/WCDMA B5/LTE B5 NR n5: 824-849 MHz
	GSM 900/WCDMA B8/LTE B8 NR n8: 880-915 MHz
	DCS /WCDMA B4/LTE B3/B4/B66 NR n3/n66: 1710-1785 MHz
	PCS/WCDMA B2/LTE B2:1850-1910MHz
	WCDMA B1/LTE B1 NR n1: 1920-1980MHz
	LTE B7 NR n7:2496-2565MHz
	LTE B40 NR n40:2300-2400MHz
	LTE B38/B41 NR n38/n41:2565-2645MHz
	LTE B20 NR n20:832-862MHz
	LTE B12/B17/B28 NR n12/n28:710-755MHz
	LTE B42 NR n77/n78:3300-4200MHz
Receiver Frequency	GSM 850/WCDMA B5/LTE B5 NR n5: 869-894 MHz
	GSM 900/WCDMA B8/LTE B8 NR n8: 925-960 MHz
	DCS/LTE B3/B66 NR n3/n66: 1805-1880 MHz
	WCDMA 4/LTE B4 NR n4: 2110-2155 MHz
	PCS/WCDMA B2/LTE B2:1930-1990MHz
	WCDMA B1/LTE B1 NR n1: 2110 – 2170MHz
	LTE B7 NR n7:2620-2690MHz
	LTE B40 NR n40:2300-2400MHz
	LTE B38/41 NR n38/n41:2565-2645MHz
	LTE B20 NR n20:791-821MHz
	LTE B12/B17/B28 NR n12/n28:758-803MHz
LTE B42 NR n77/n78:3300-4200MHz	

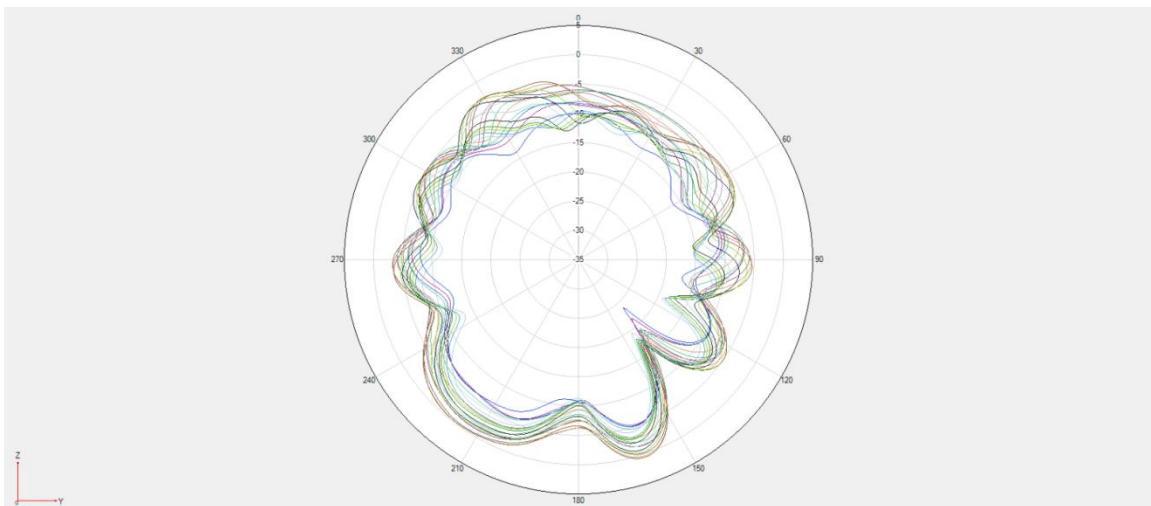
Antenna Average Gain	ANT0(MB DRX MIMO&N77/ 78 DRX MIMO)	LTE B1/B3 NR n1/3: -4.7dbi
		LTE B42, NR77/78:-1.8dbi
	ANT1(LB TRX)	LTE B12/B17/B28 NR n12/n28:-6.4dbi
		GSM 850, WCDMA B5, LTE B5 B20 NR n5 N20:- 6.8dbi
		GSM900, WCDMA B8, LTE B8 NR n8:-7.1dbi
	ANT2(MHB PRX)	PCS/WCDMA B1/B2/LTE B1/B2/N1/N2:-3.9dbi
		DCS /LTE B3/B4/B66/ N3/N4N66:-4.9dbi
		LTE B7/B38/B40/B41/N7/N38/N40/N41:-2.1dbi
	ANT3(LB DRX)	LTE B12/B17/B28 NR n12/n28:-5.8dbi
		GSM 850, WCDMA B5, LTE B5 NR n5: -5.3dbi
		GSM900, WCDMA B8, LTE B8 NR n8:-5.8dbi
	ANT4(MHB DRX)	WCDMA B1 , LTE B1, NR n1:-4.8dbi
		DCS, LTE B3/4/66, NR n3/66:-4.2dbi
		PCS/WCDMA B2/LTE B2 :-5.6dbi
		LTE B40, NR n40:-4.7dbi
		LTE B7/B38/B41, NR n7/38/41:-5.3dbi
	ANT5(PRX MIMO)	LTE B42, NR77/78:-4.6dbi
	ANT6(ENDC TRX)	LTE B1, NR n1:-5.6dbi
		LTE B3/4/66, NR n3/66:-5.2dbi
		LTE B40, NR n40:-5.7dbi
LTE B7/B38/B41, NR n7/38/41:-5.3dbi		
ANT7(PRX)	LTE B42, NR77/78:-5.8dbi	
ANT8(N77/78 DRX)	LTE B42, NR77/78:-1.8dbi	
ANT12	GPS L1:-2.2dbi	
	BT&WIFI 2.4G MIMO1:-4.3dbi	
ANT13	WIFI 2.4G MIMO2:-2.55dbi	
	WIFI 5G MIMO1:-1.64dbi	
ANT14	GPS L5:-7.5dbi	
ANT15	WIFI 5G MIMO2:-3.6dbi	

※ Antenna Gain

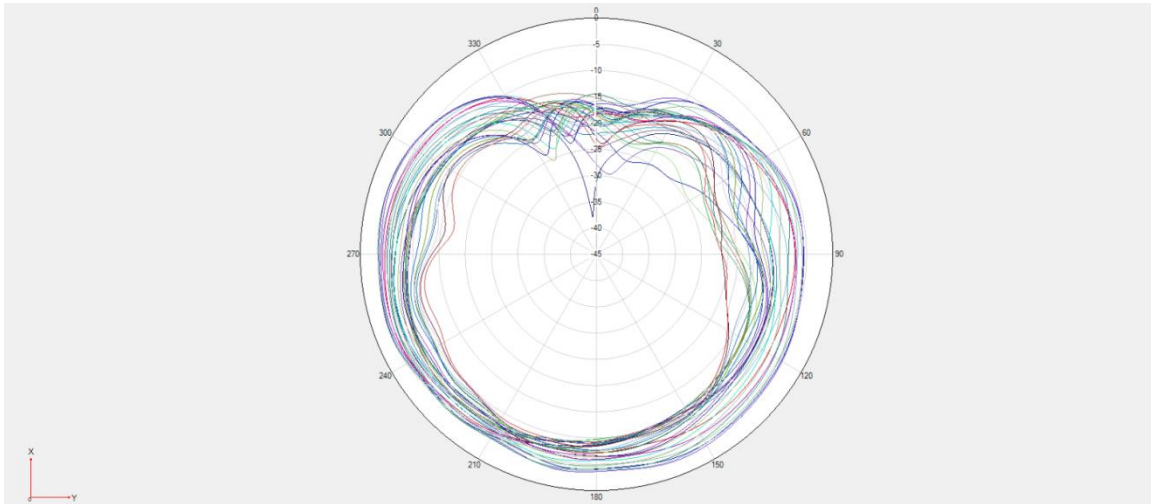
ANT0



B42;N77/78 Phi=0deg



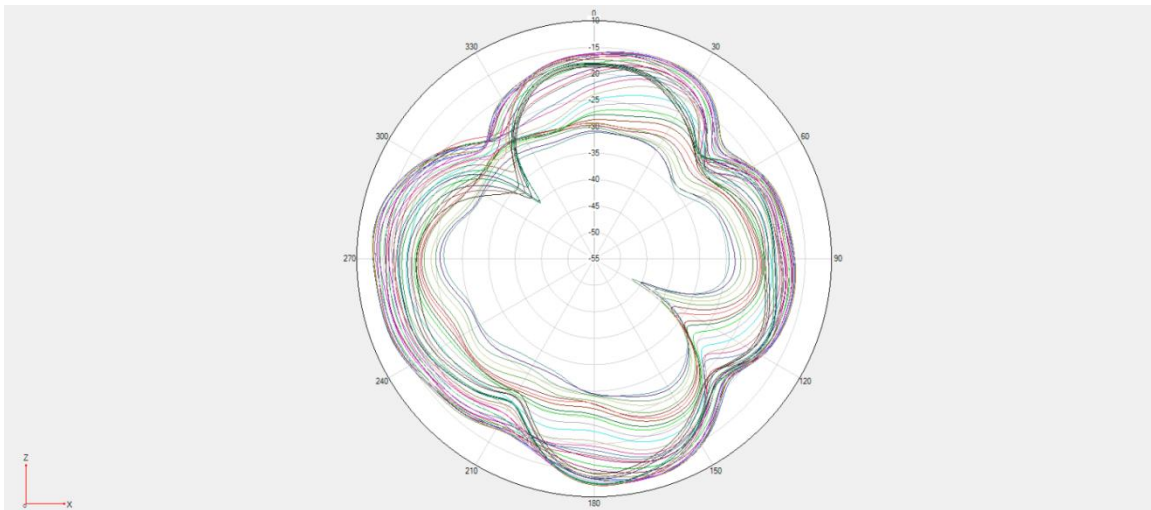
B42;N77/78 Phi=90deg



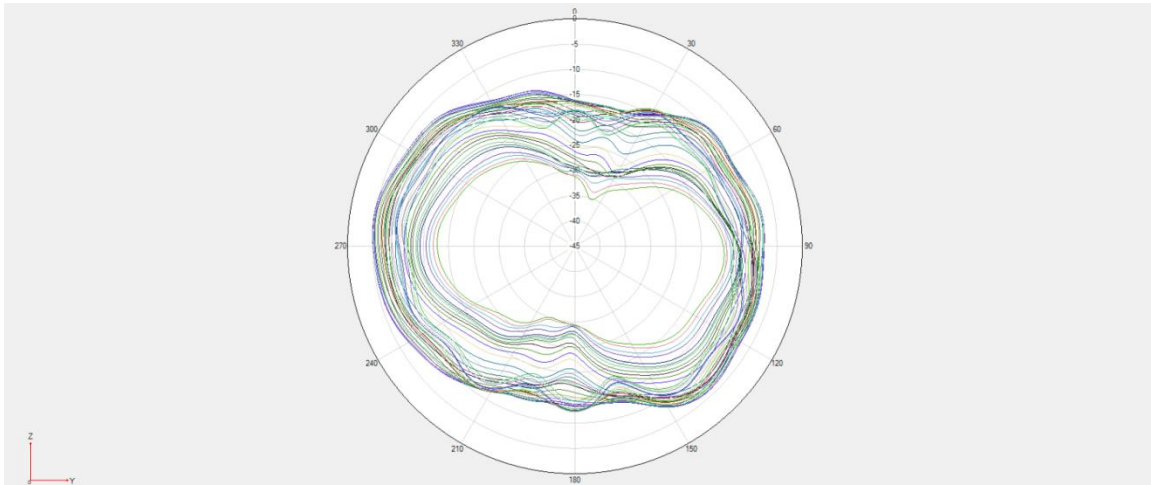
B42;N77/78 Theta=90deg

※ Antenna Gain

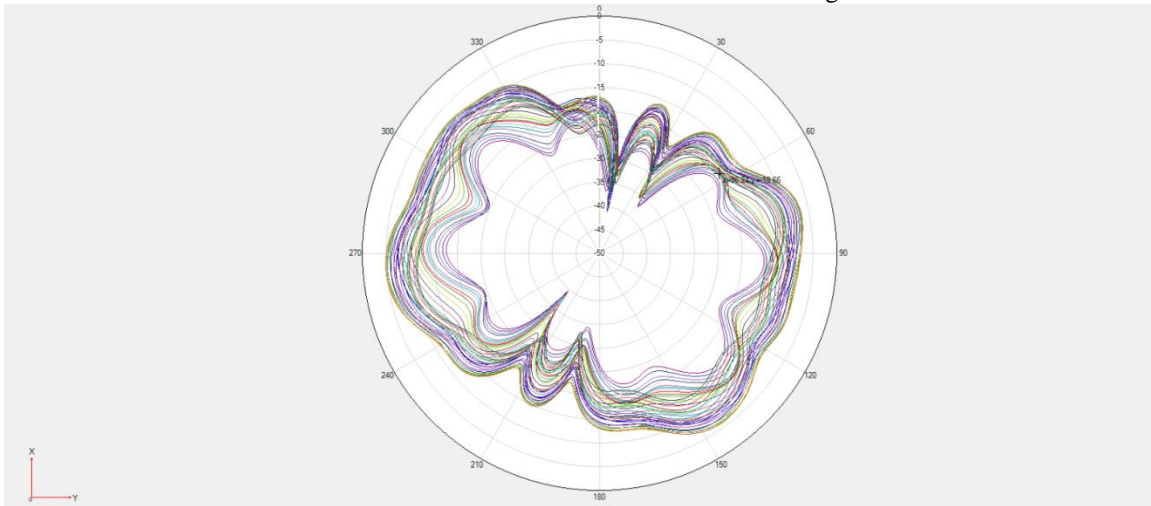
ANT1



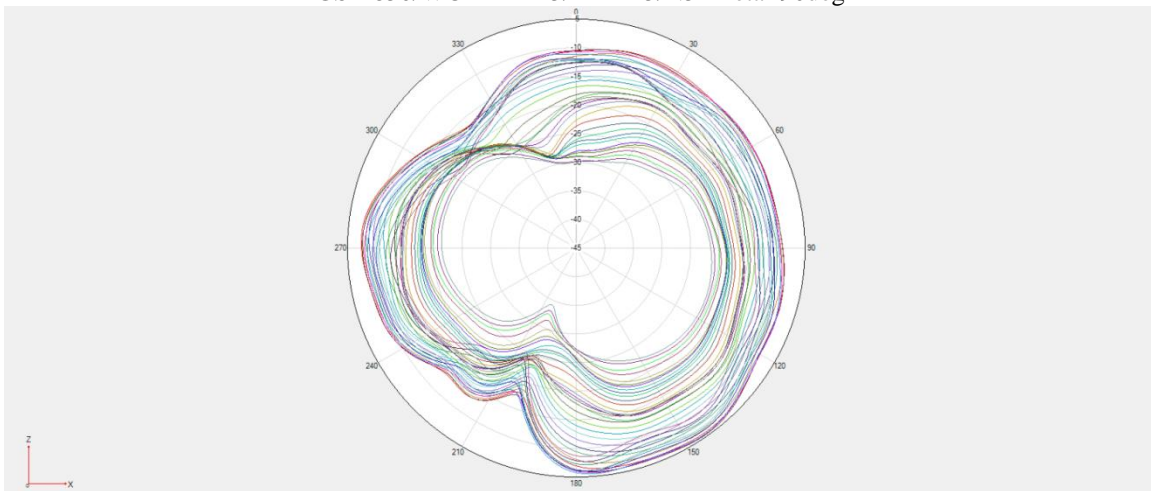
GSM850/WCDMA B5/LTE B5/N5 Phi=0deg



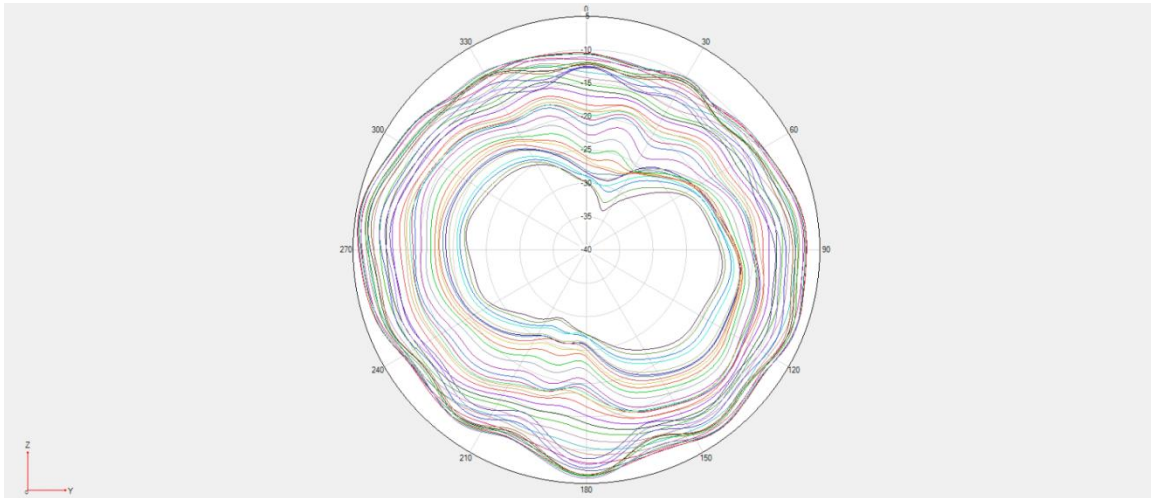
GSM850/WCDMA B5/LTE B5/N5  $\Phi = 90^\circ$



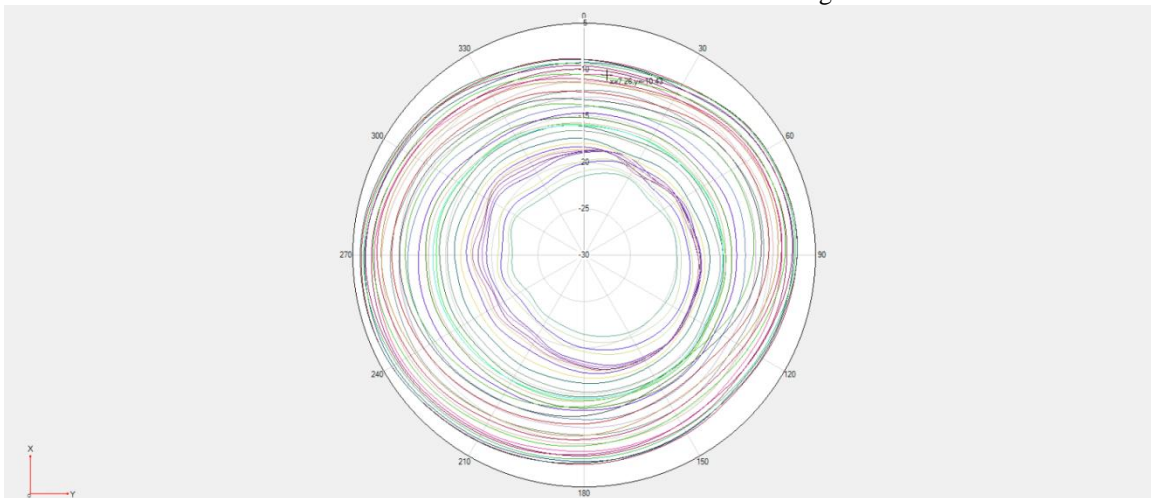
GSM850/WCDMA B5/LTE B5/N5  $\Theta = 90^\circ$



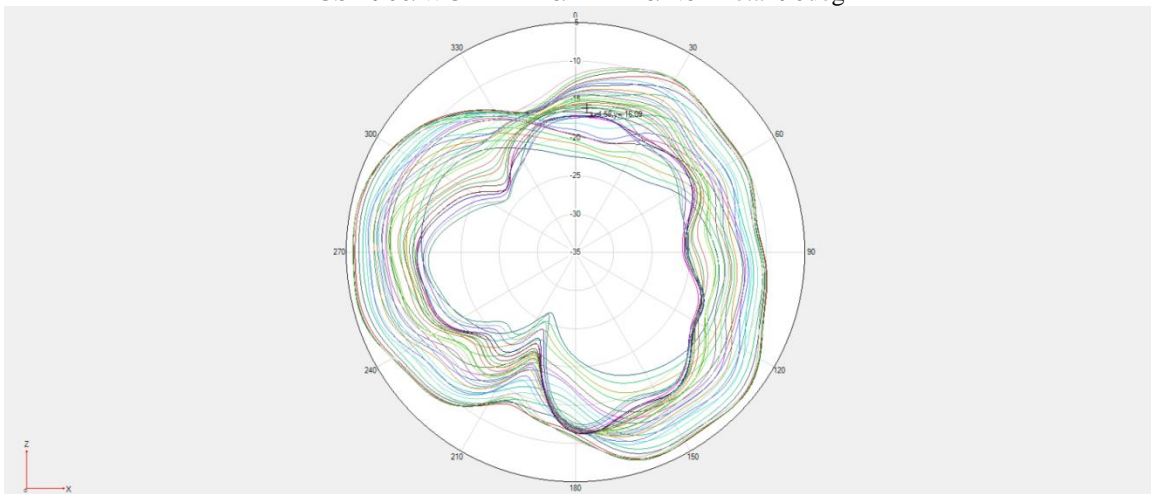
GSM900/WCDMA B8/LTE B8/N8  $\Phi = 0^\circ$



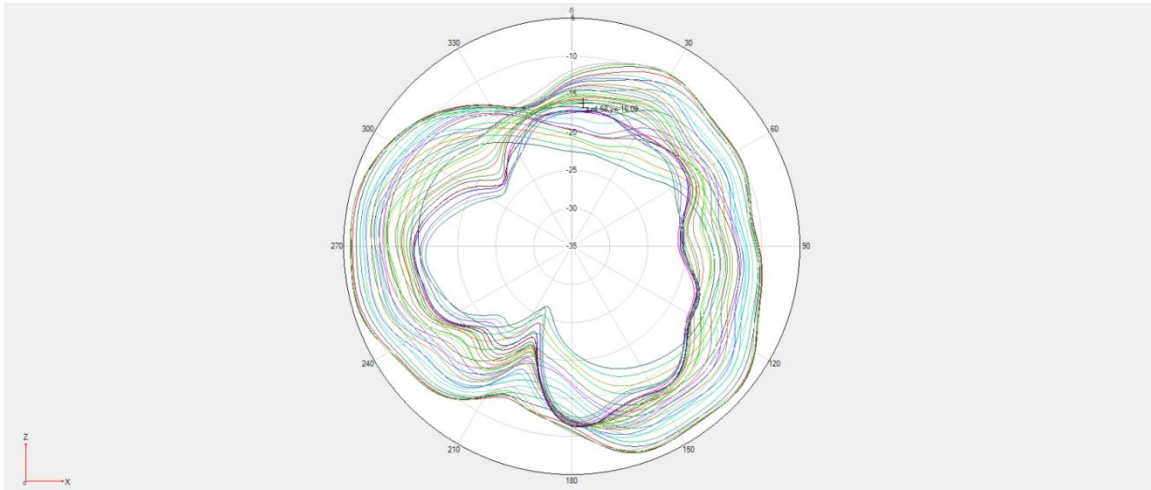
GSM900/WCDMA B8/LTE B8/N8 Phi=90deg



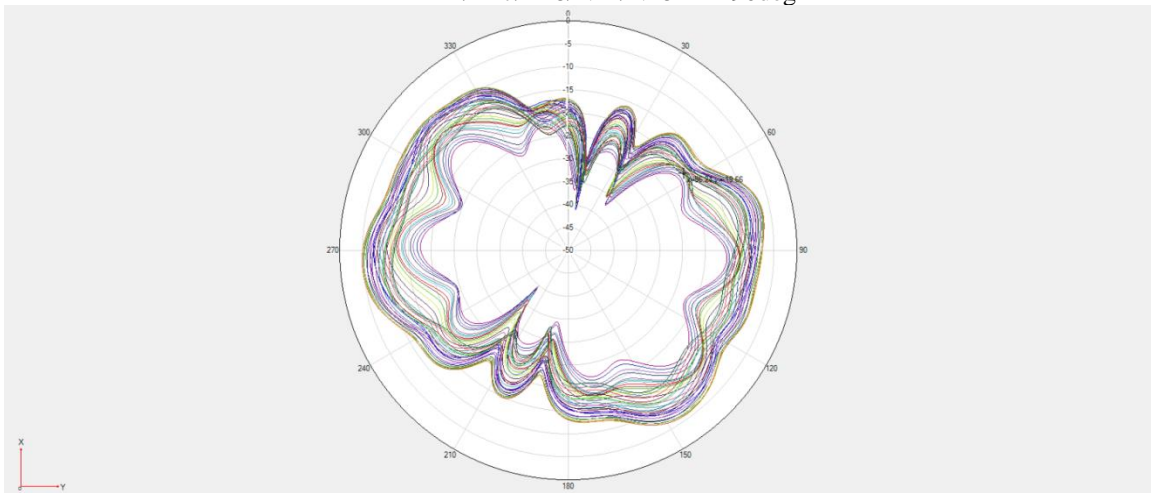
GSM900/WCDMA B8/LTE B8/N8 Theta=90deg



LTE B12/B17/B28/N12/N28 Phi=0deg

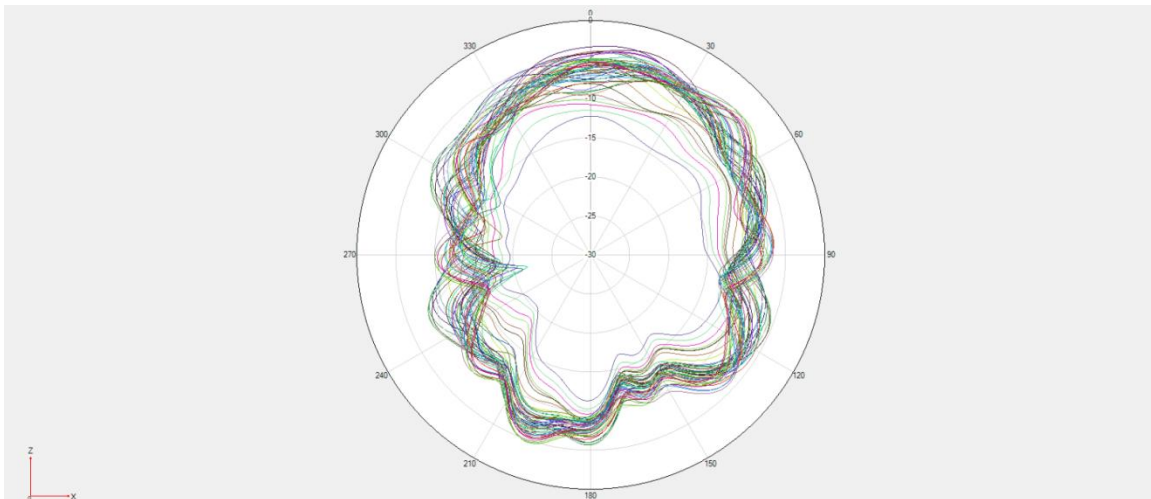


LTE B12/B17/B28/N12/N28 Phi=90deg



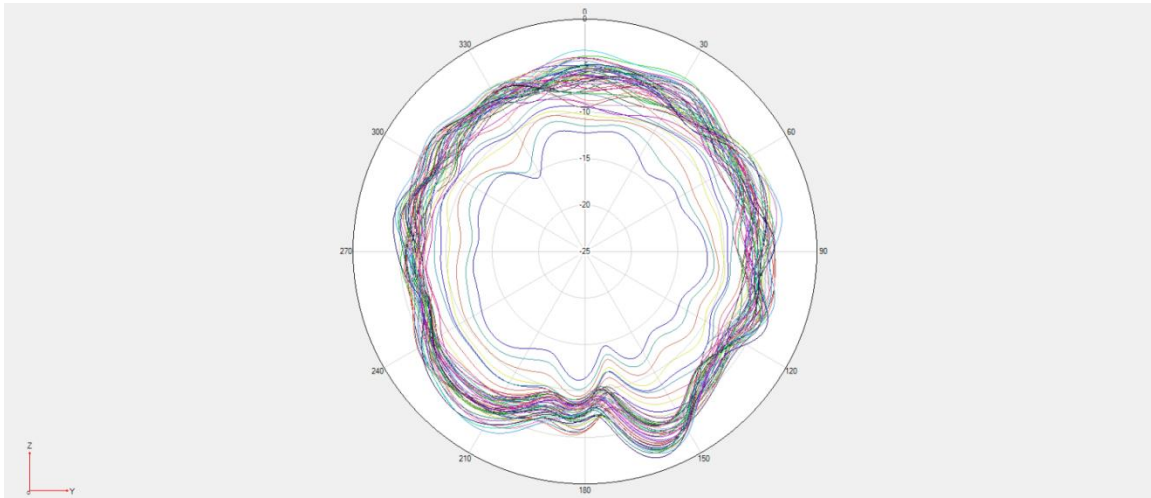
LTE B12/B17/B28/N12/N28 Theta=90deg

※ Antenna Gain  
ANT2

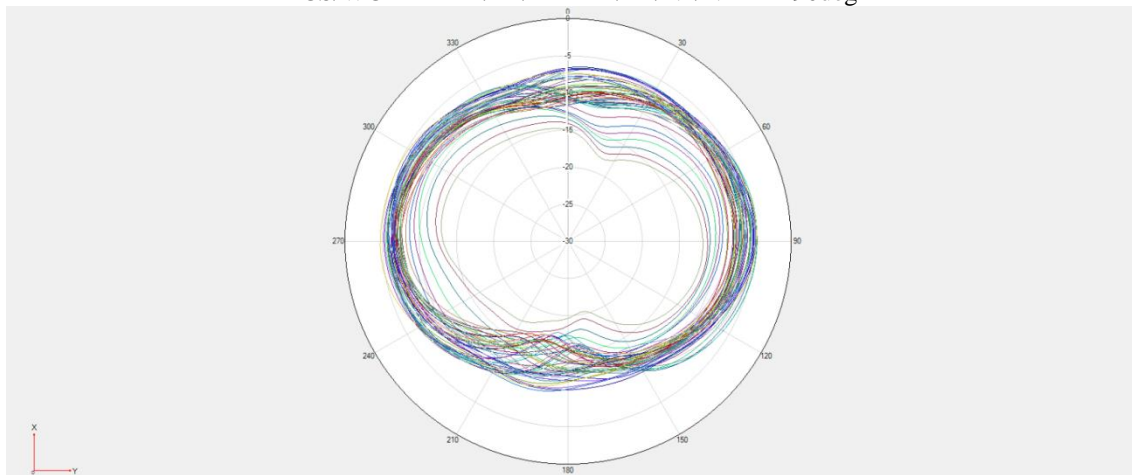


PCS/WCDMA B1/B2/LTE B1/B2/N1/N2 Phi=0deg

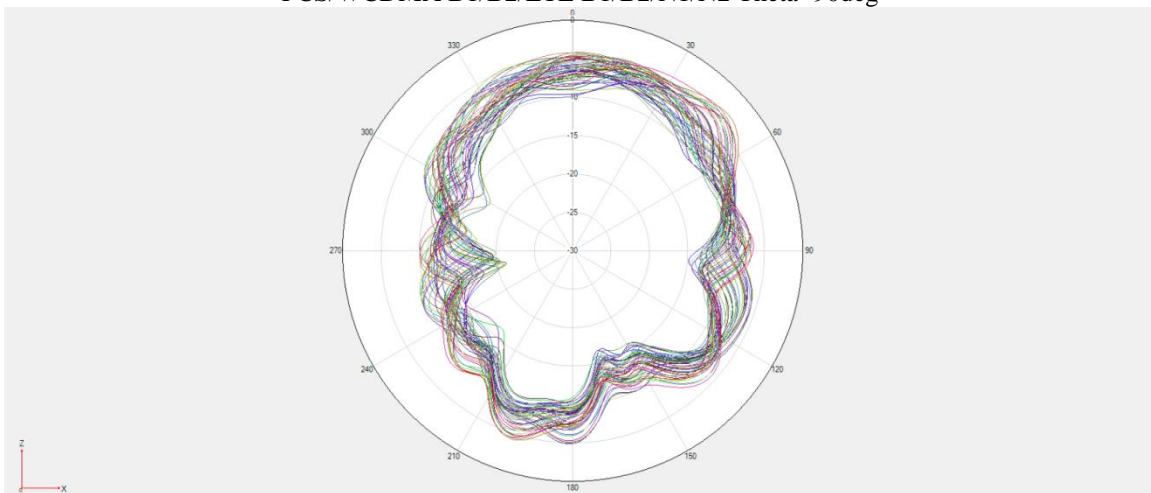




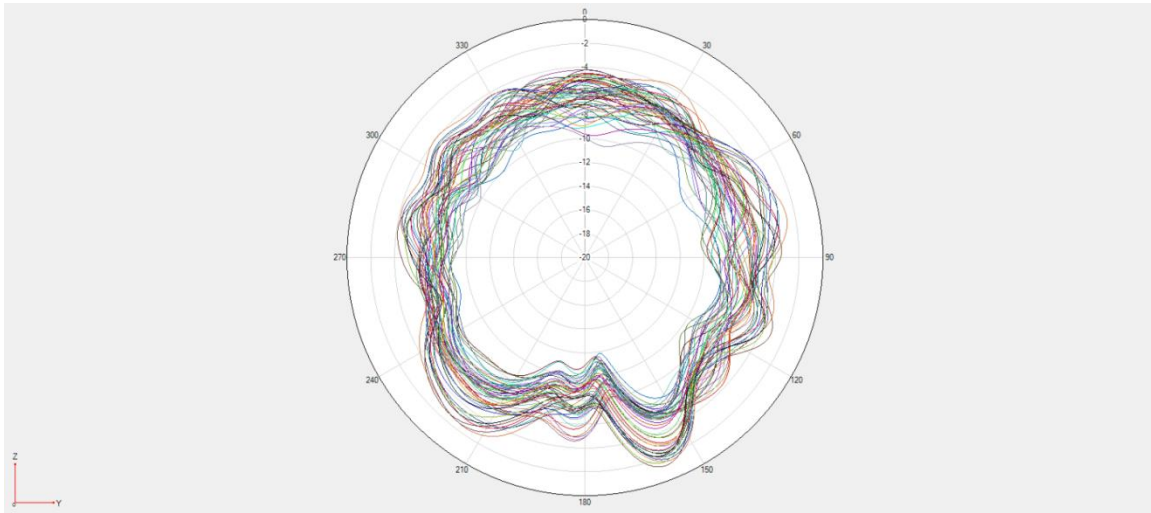
PCS/WCDMA B1/B2/LTE B1/B2/N1/N2  $\Phi=90^\circ$



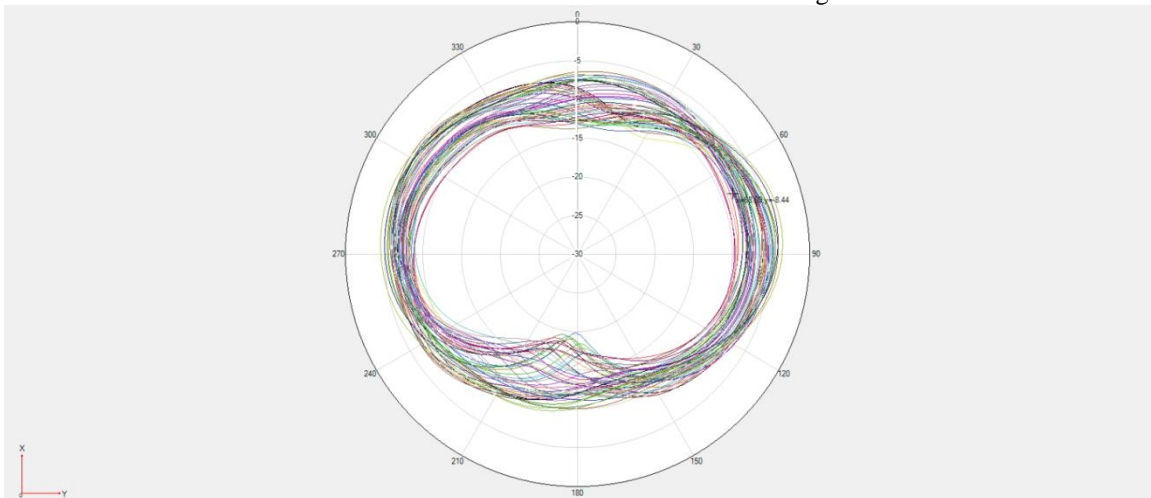
PCS/WCDMA B1/B2/LTE B1/B2/N1/N2  $\Theta=90^\circ$



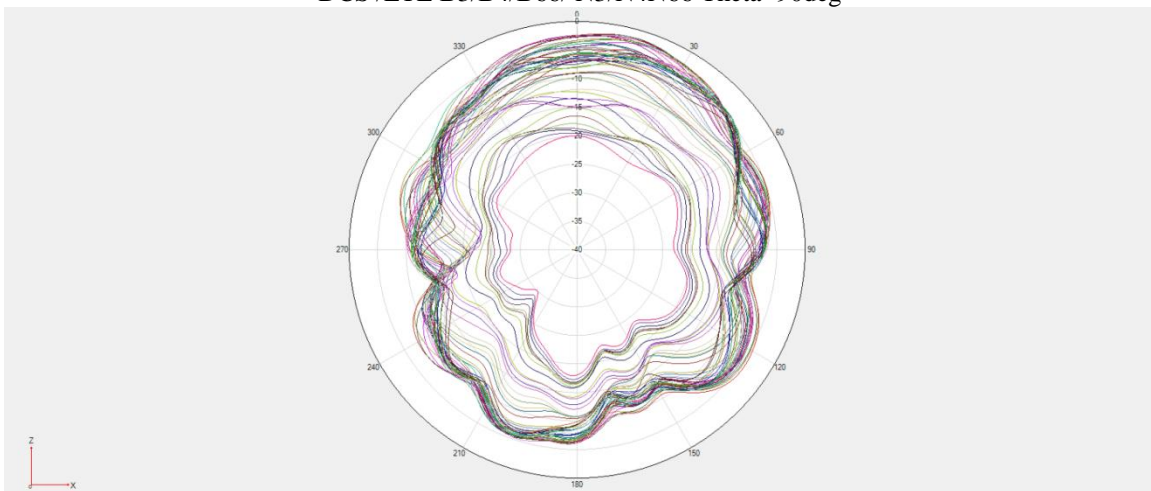
DCS /LTE B3/B4/B66/ N3/N4N66  $\Phi=0^\circ$



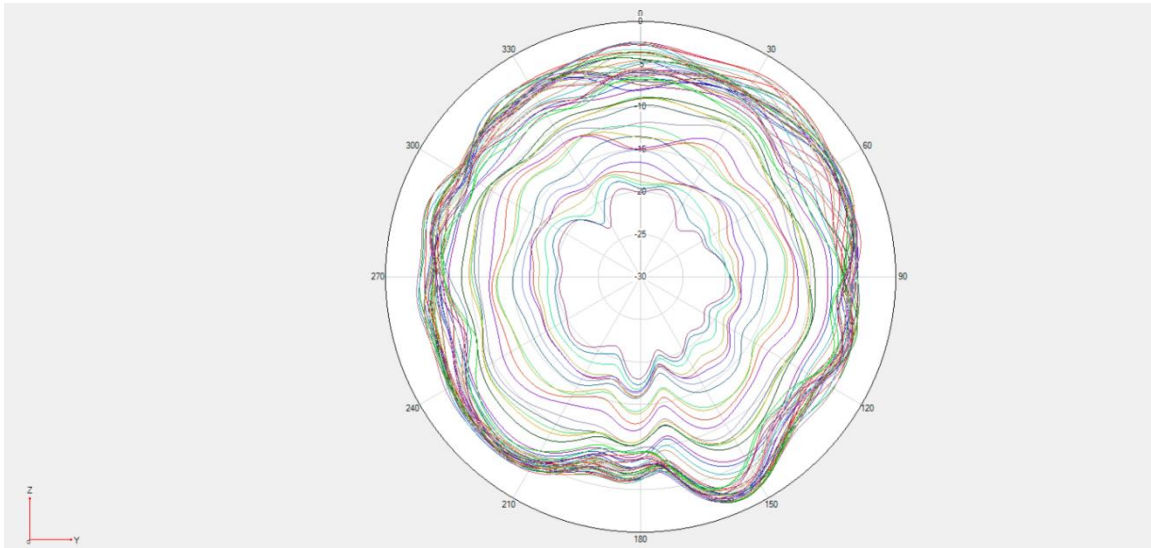
DCS /LTE B3/B4/B66/ N3/N4N66  $\Phi=90^\circ$



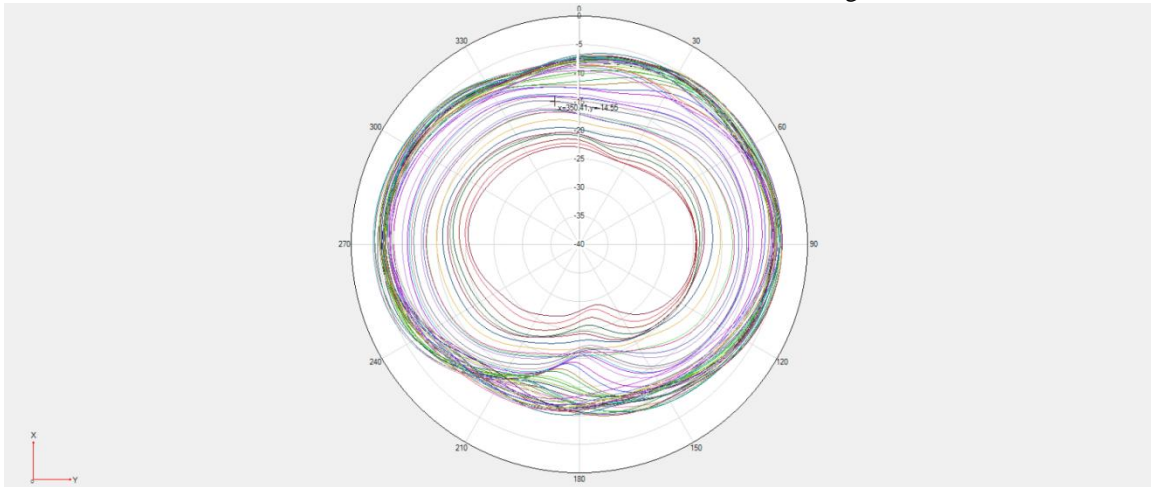
DCS /LTE B3/B4/B66/ N3/N4N66  $\Theta=90^\circ$



LTE B7/B38/B40/B41/N7N38/N40/N41  $\Phi=0^\circ$



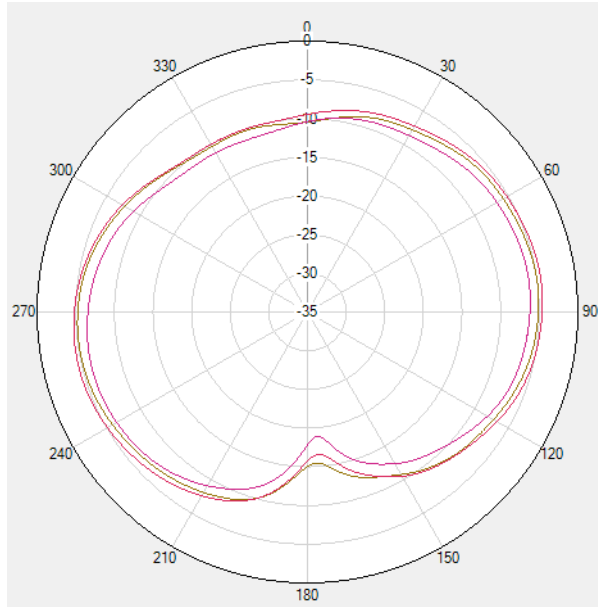
LTE B7/B38/B40/B41/N7N38/N40/N41 Phi=90deg



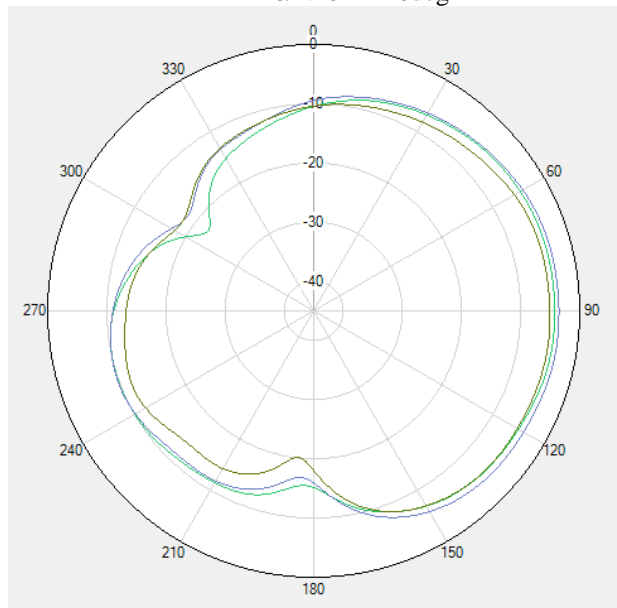
LTE B7/B38/B40/B41/N7N38/N40/N41 Theta=90deg

※ Antenna Gain

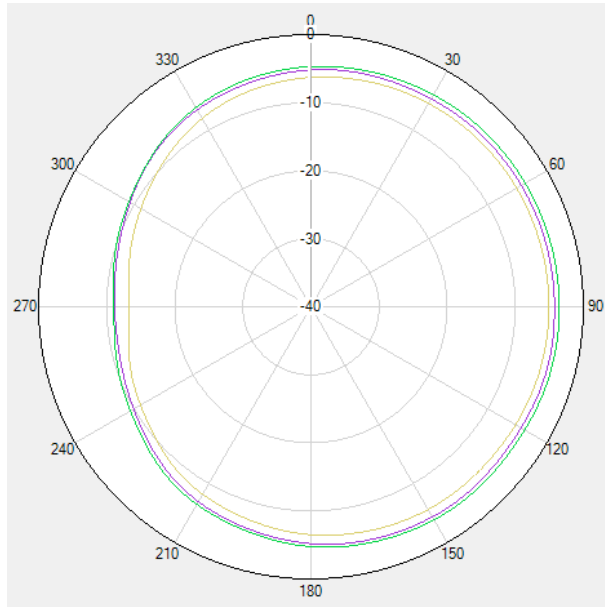
ANT3



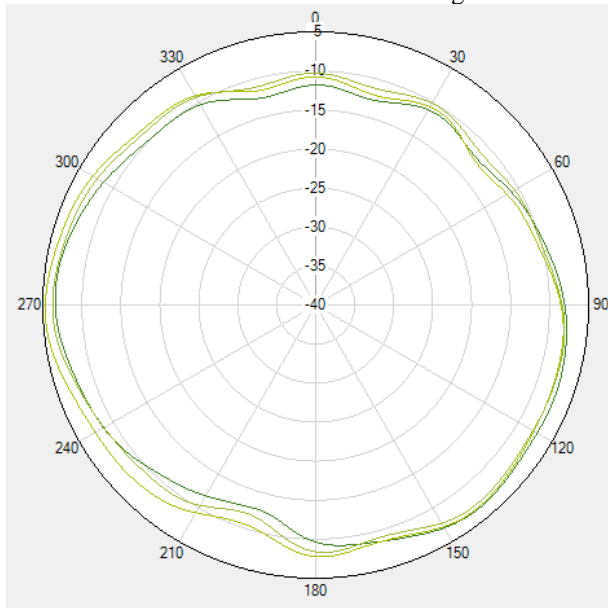
LTE B28/N28 Phi=0deg



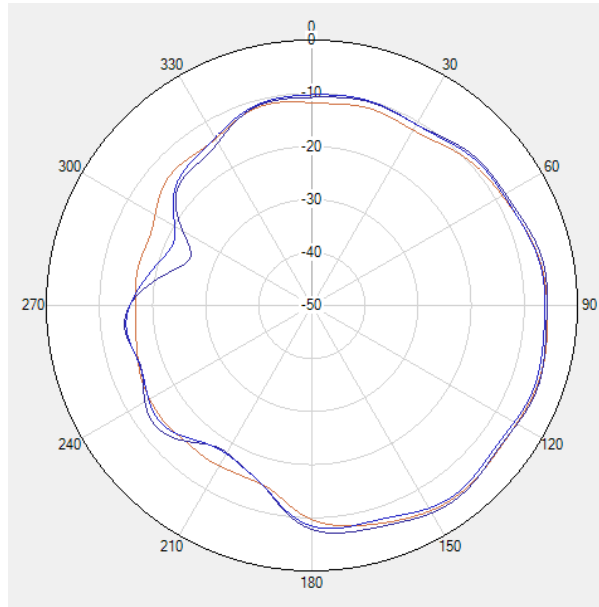
LTE B28/N28 Phi=90deg



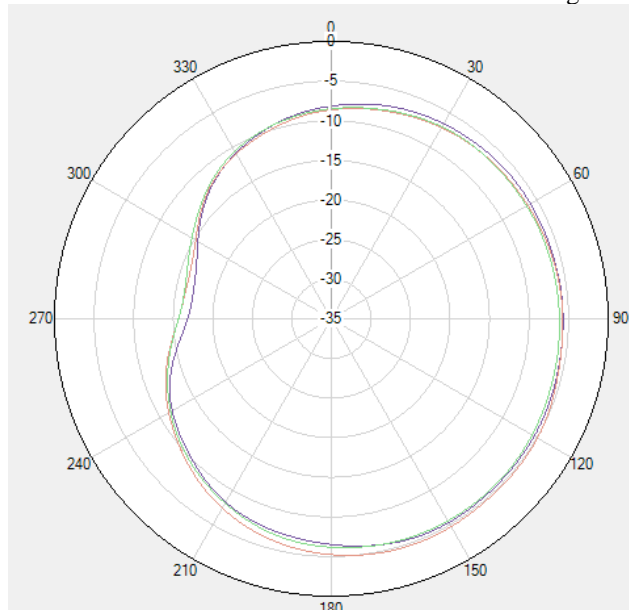
LTE B28/N28 Theta=90deg



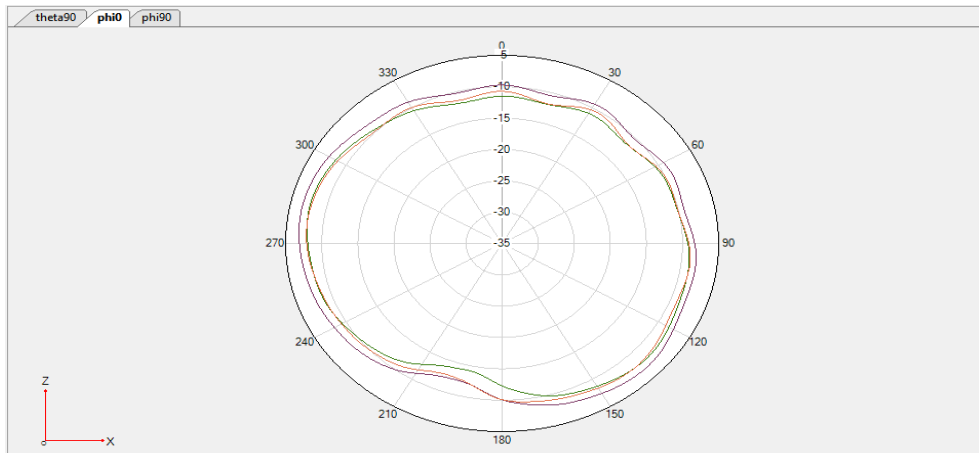
GSM 900/WCDMA B8/LTE B8/N8 Phi=0deg



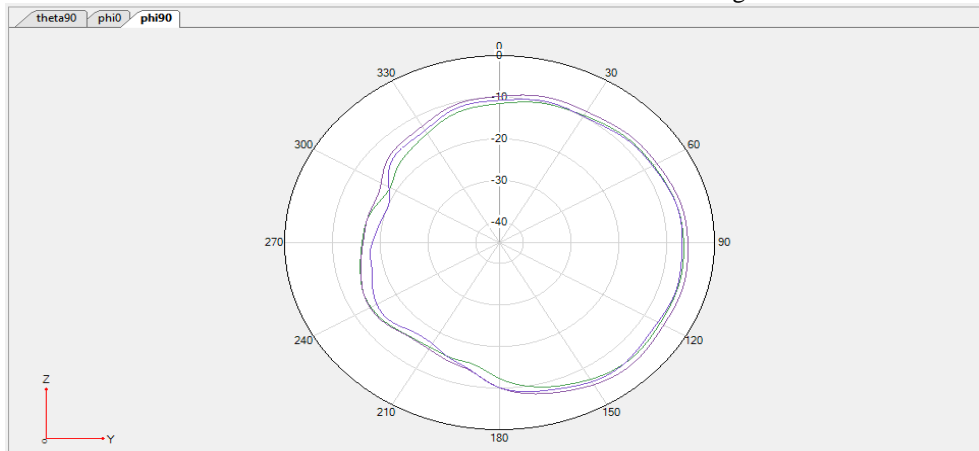
GSM 900/WCDMA B8/LTE B8/N8 Phi=90deg



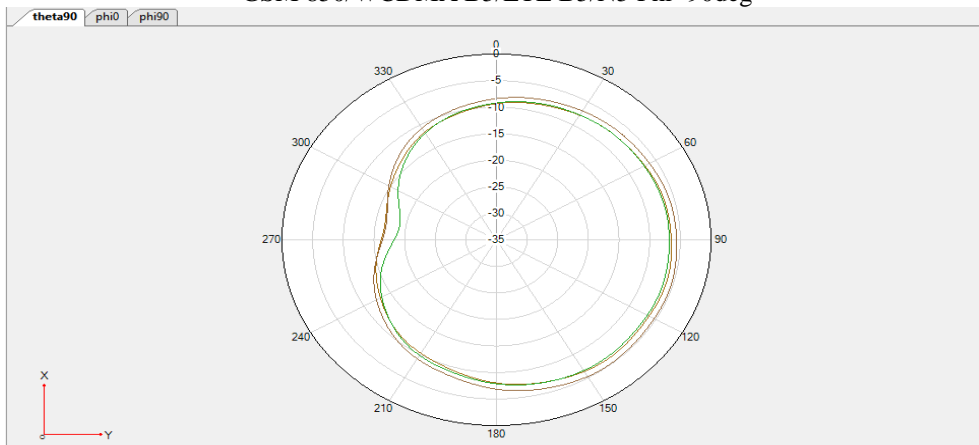
GSM 900/WCDMA B8/LTE B8/N8 Theta=90deg



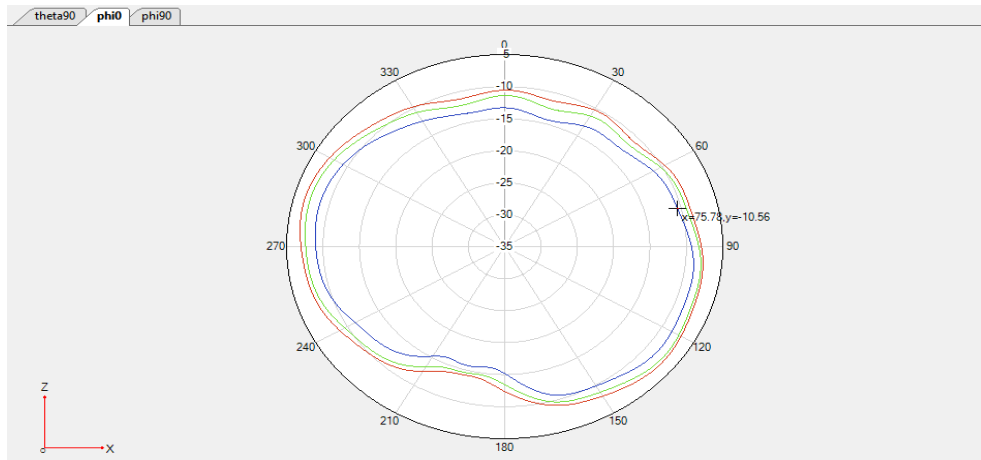
GSM 850/WCDMA B5/LTE B5/N5 Phi=0deg



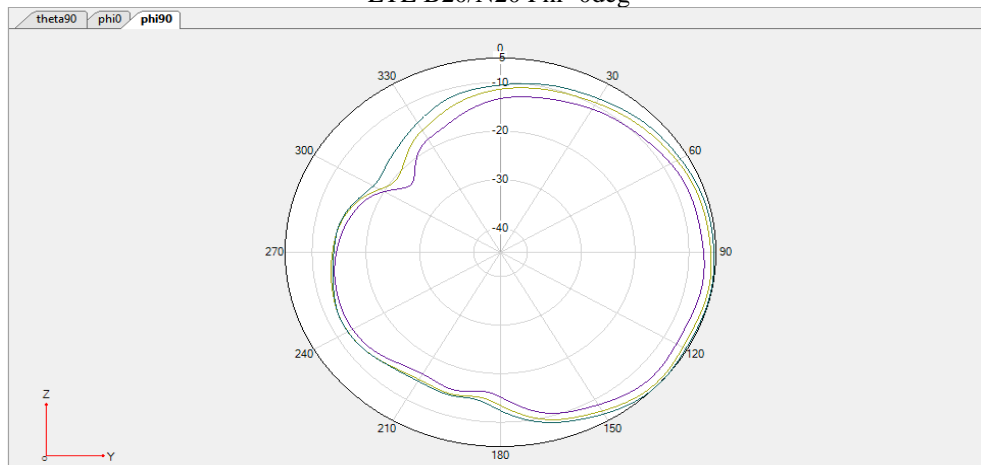
GSM 850/WCDMA B5/LTE B5/N5 Phi=90deg



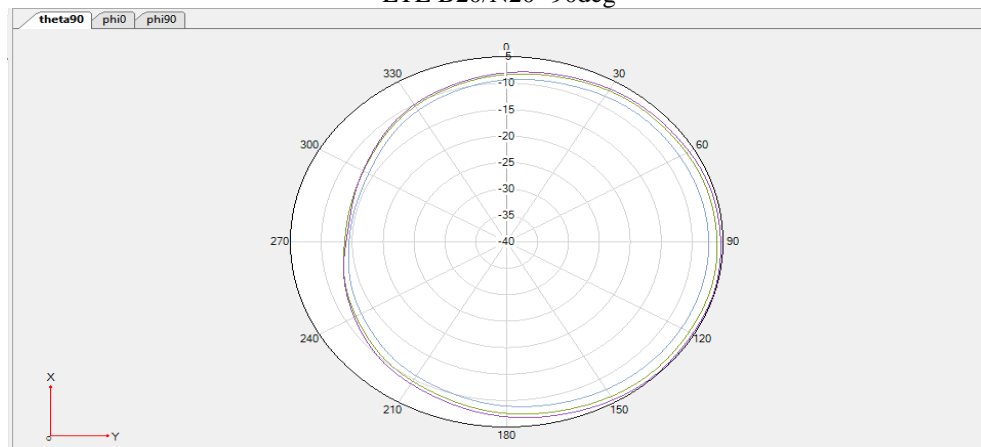
GSM 850/WCDMA B5/LTE B5/N5 Theta=90deg



LTE B20/N20 Phi=0deg

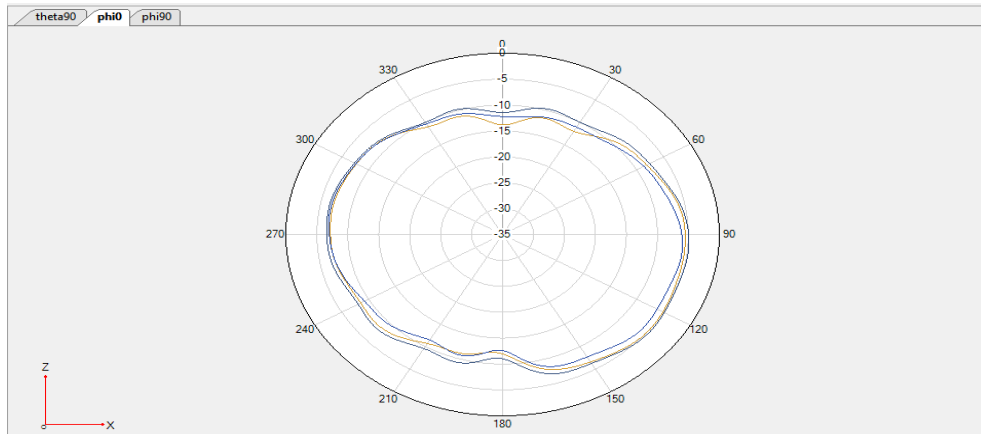


LTE B20/N20 Theta=90deg

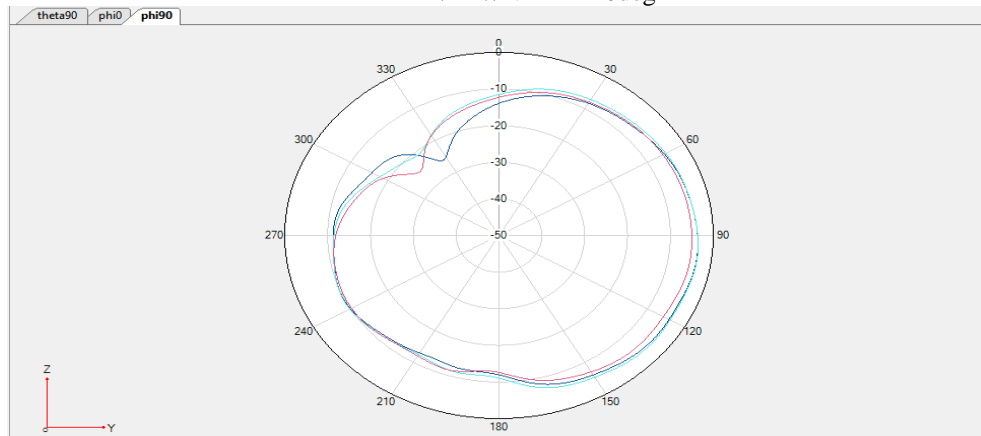


LTE B20/N20 Theta=90deg

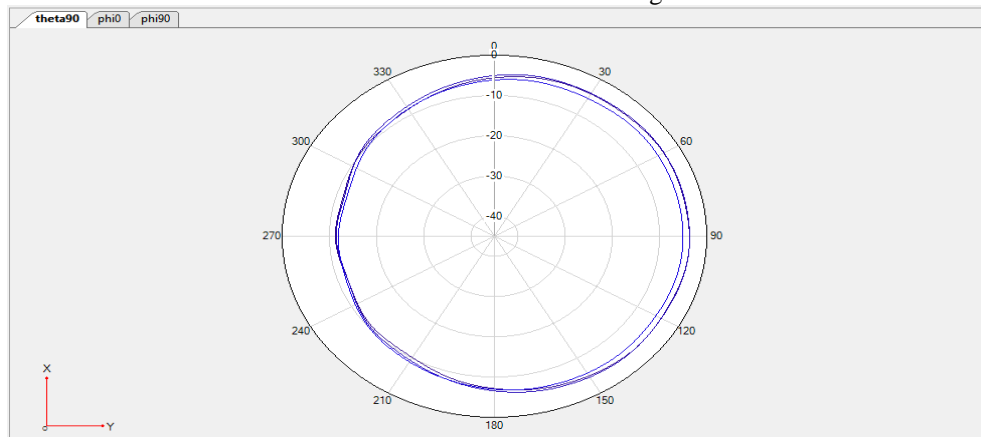




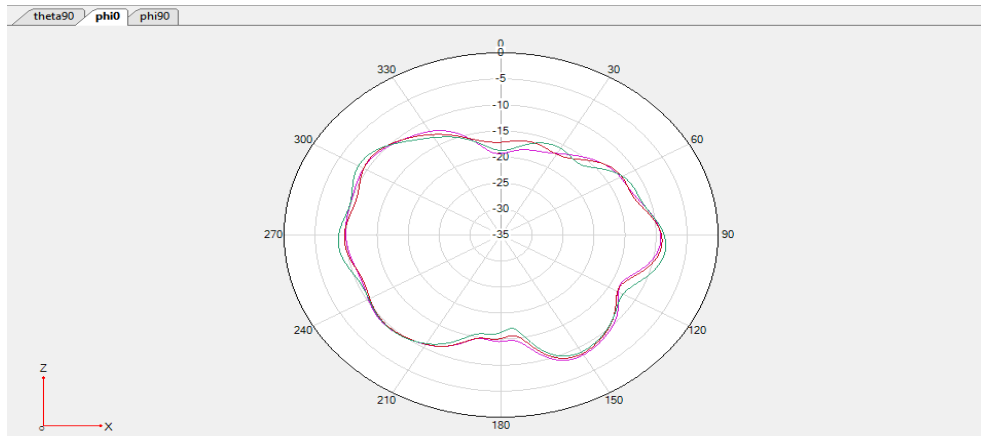
LTE B12/B17/N12 Phi=0deg



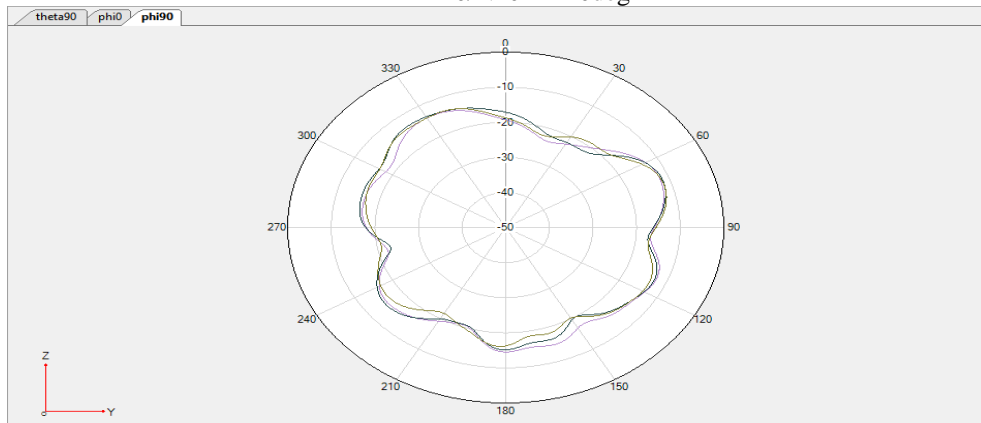
LTE B12/B17/N12 Phi=90deg



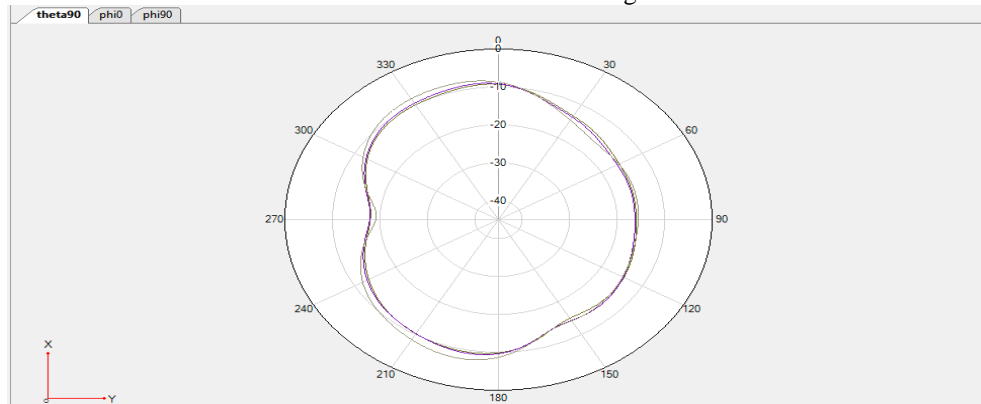
LTE B12/B17/N12 Theta=90deg



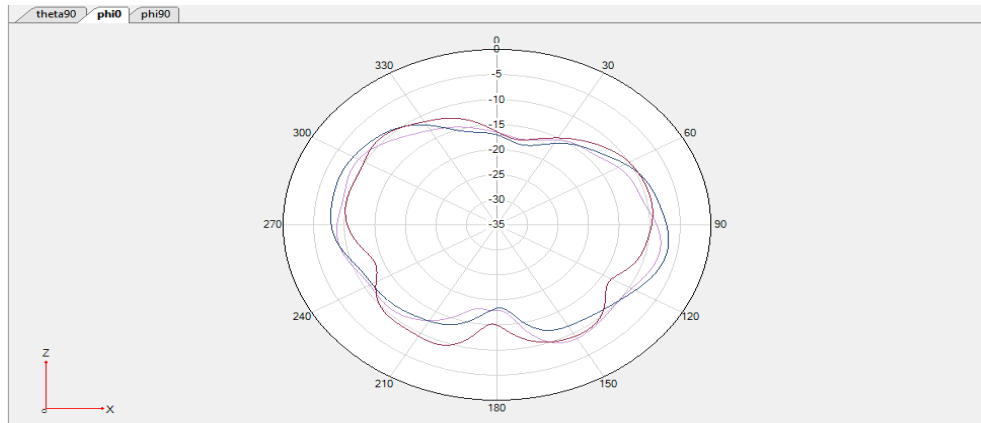
LTE B40/N40  $\Phi=0^\circ$



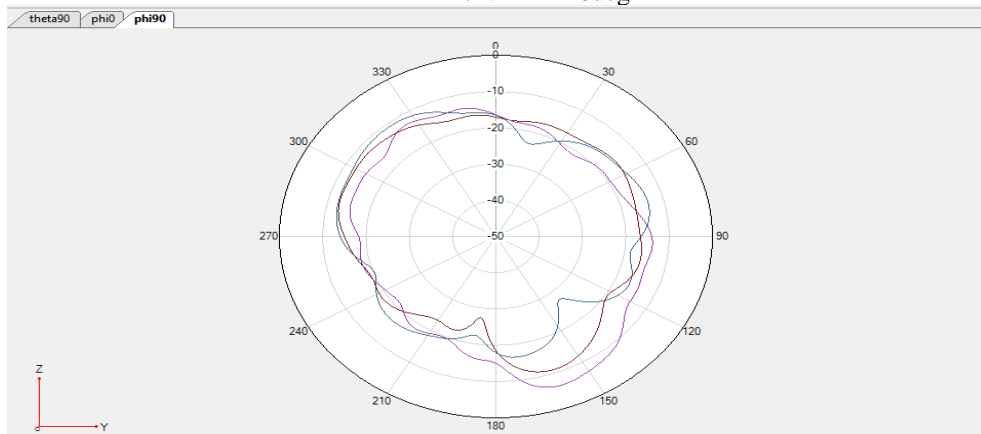
LTE B40/N40  $\Phi=90^\circ$



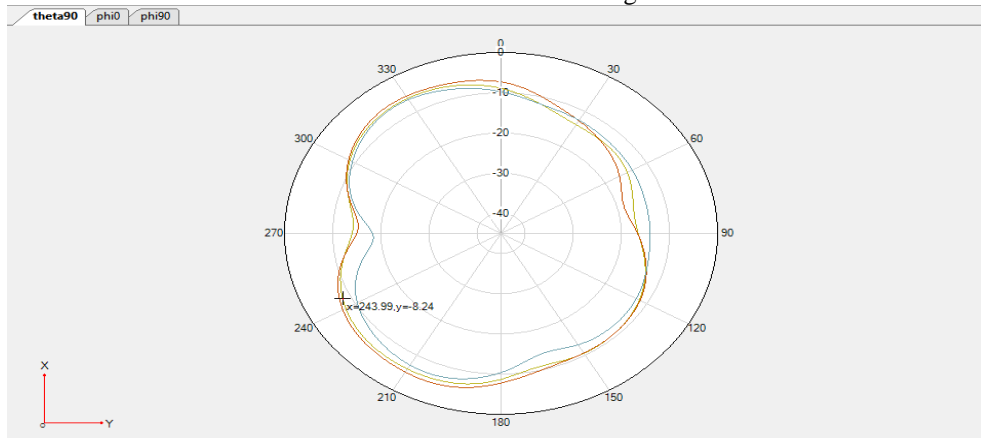
LTE B40/N40  $\Theta=90^\circ$



LTE B41/N41 Phi=0deg



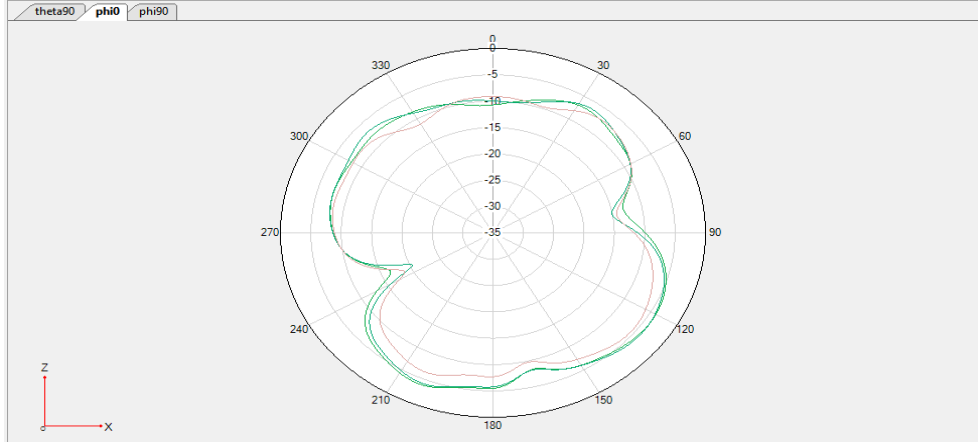
LTE B41/N41 Phi=90deg



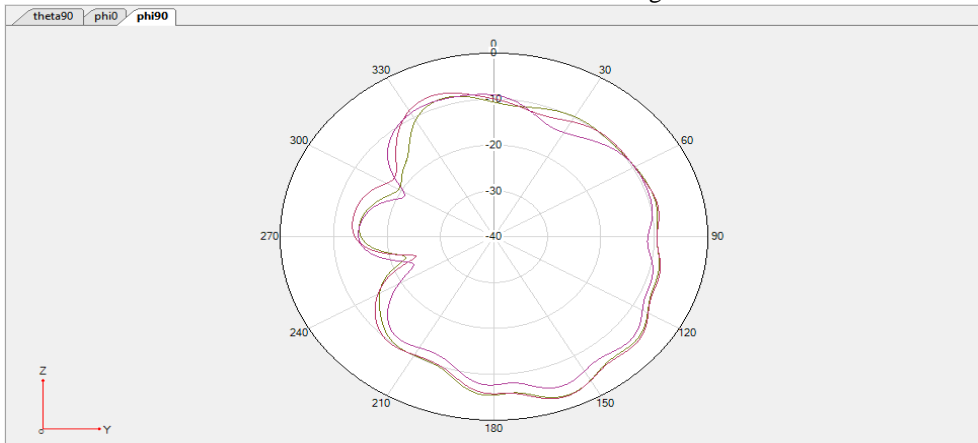
LTE B41/N41 Theta=90deg

※ Antenna Gain

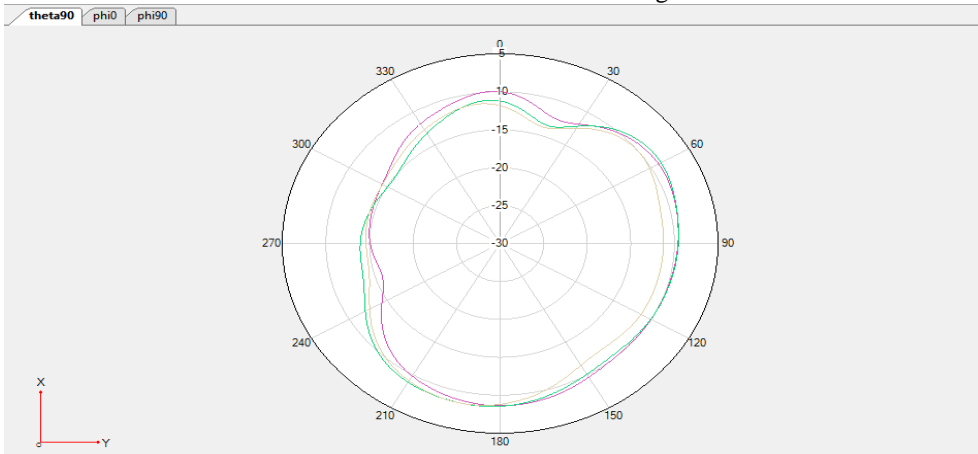
ANT4



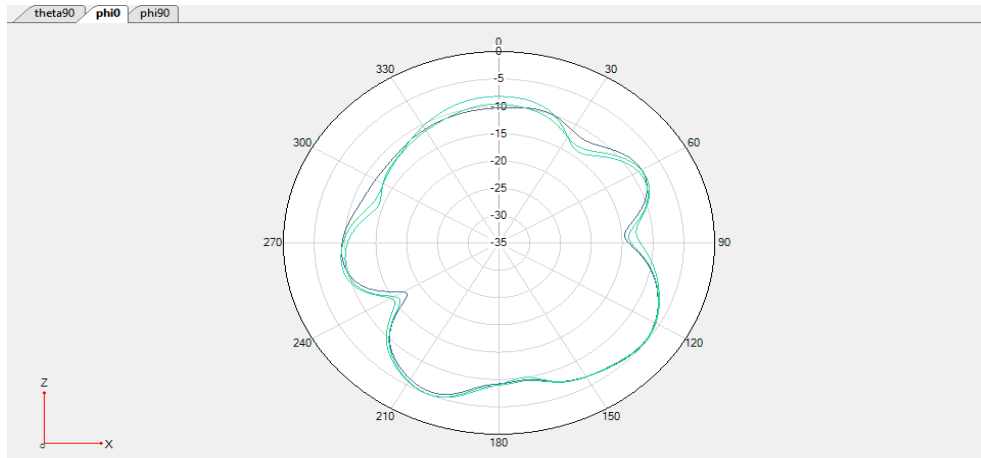
DCS /LTE B3/N3Phi=0deg



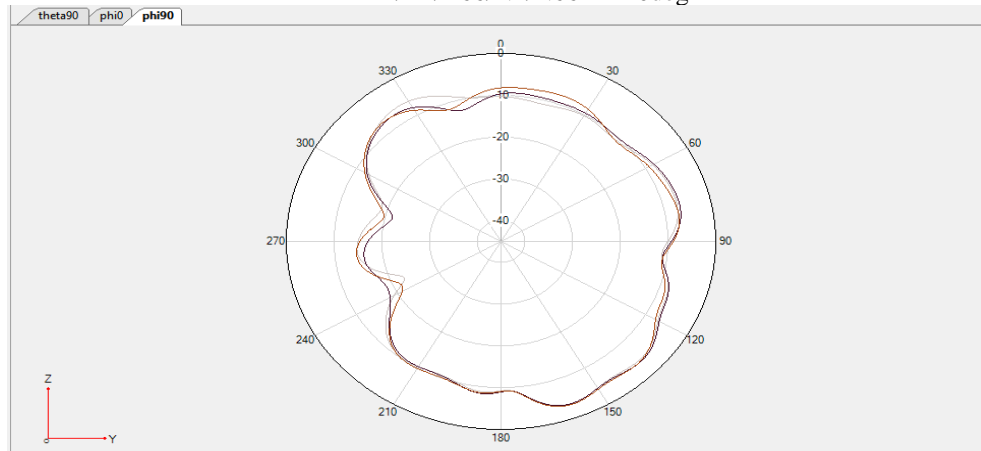
DCS /LTE B3/N3Phi=90deg



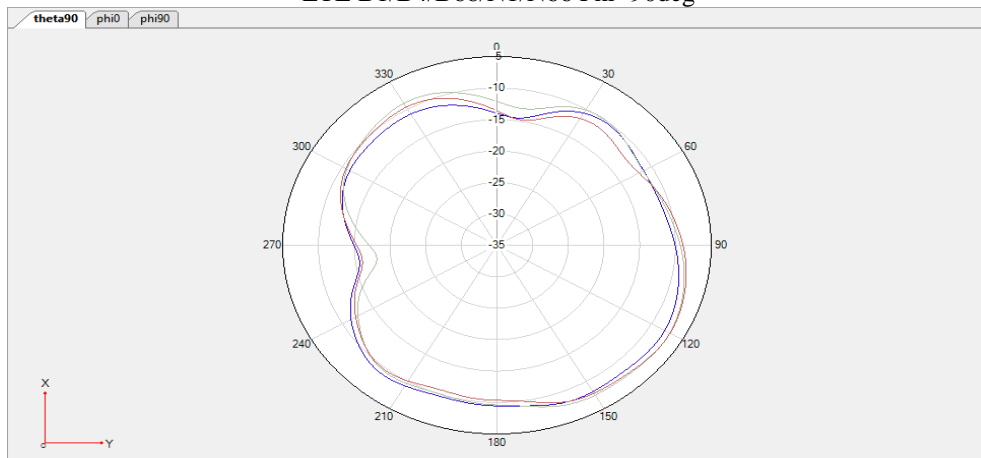
DCS /LTE B3/N3Theta=90deg



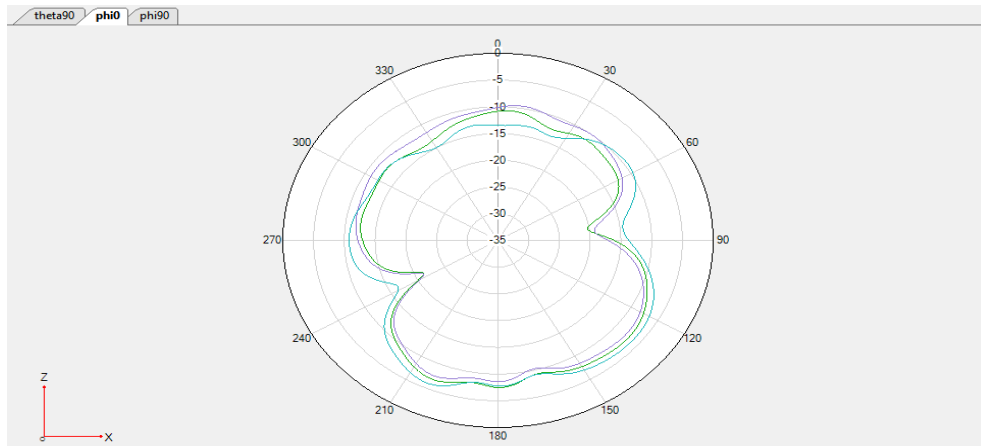
LTE B1/B4/B66/N1/N66 Phi=0deg



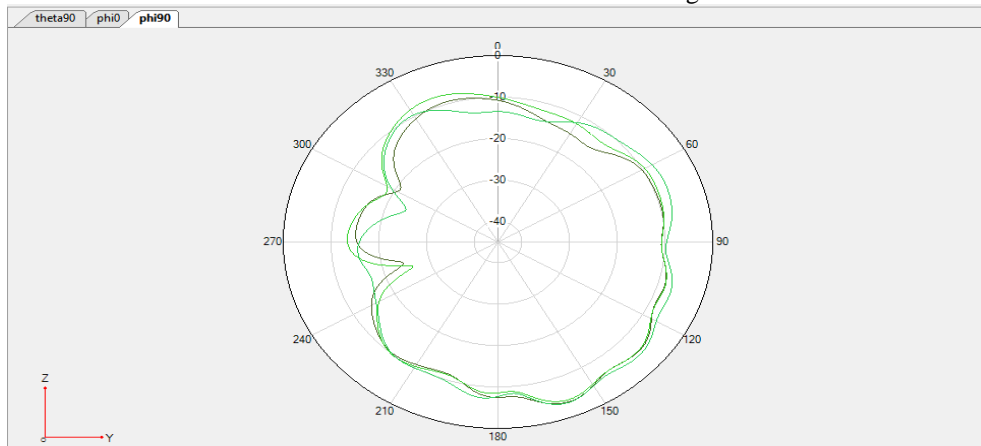
LTE B1/B4/B66/N1/N66 Phi=90deg



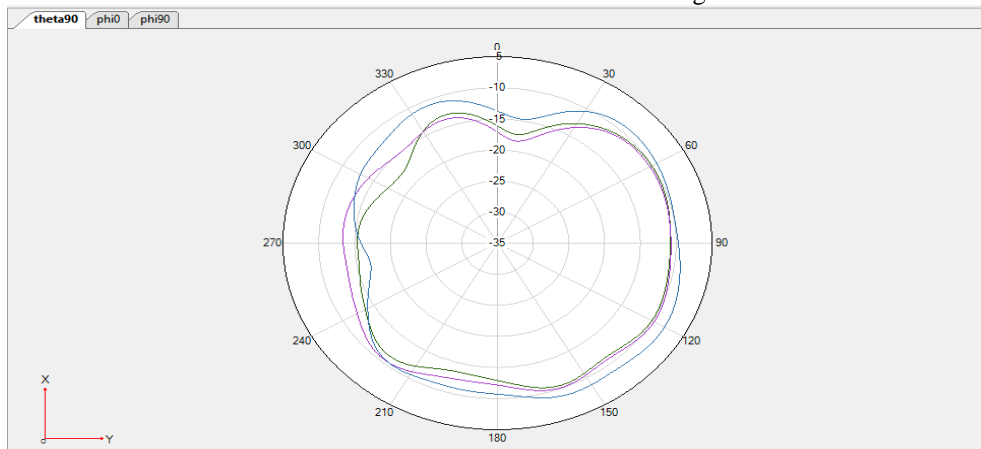
LTE B1/B4/B66/N1/N66 Theta=90deg



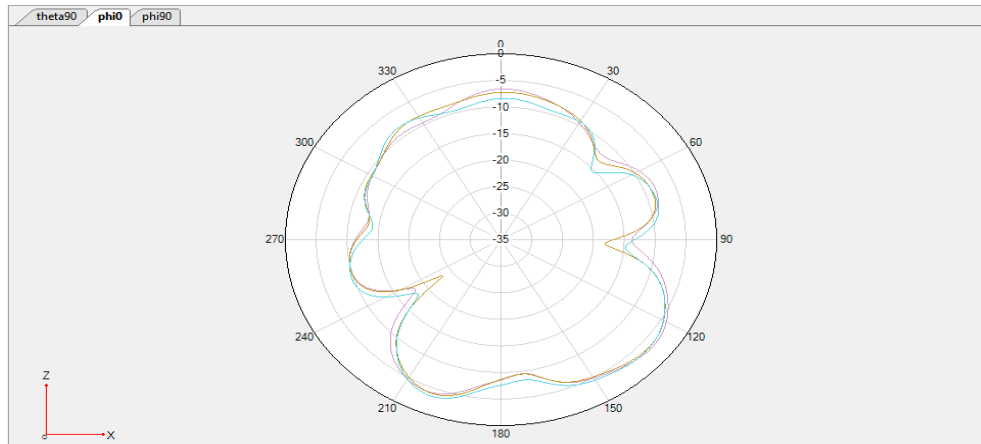
PCS/WCDMA B2/LTE B2  $\Phi=0^\circ$



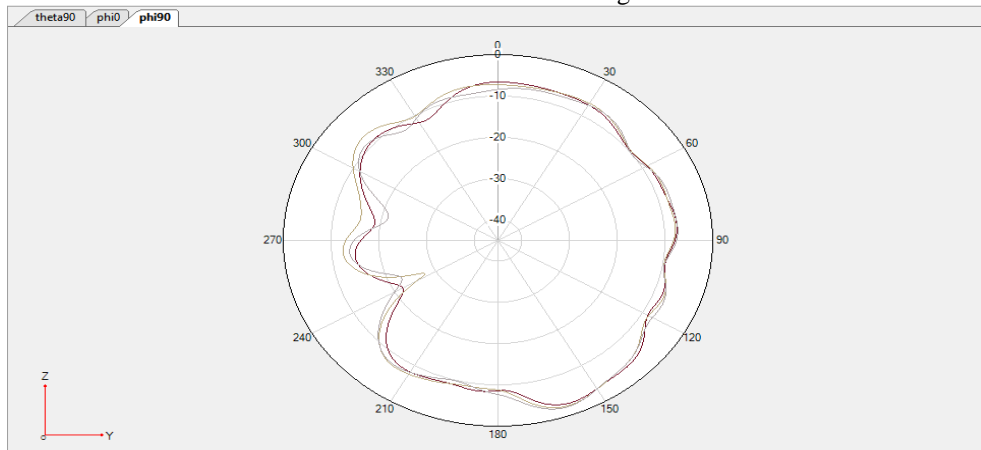
PCS/WCDMA B2/LTE B2  $\Phi=90^\circ$



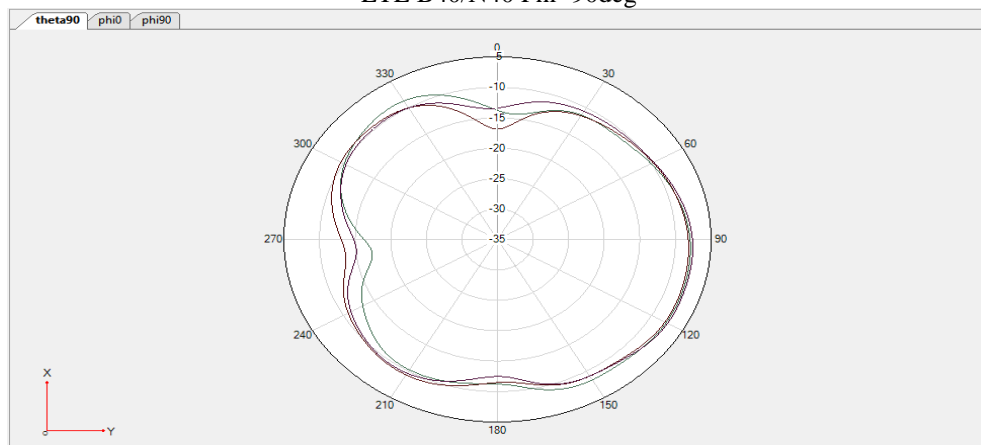
PCS/WCDMA B2/LTE B2  $\Theta=90^\circ$



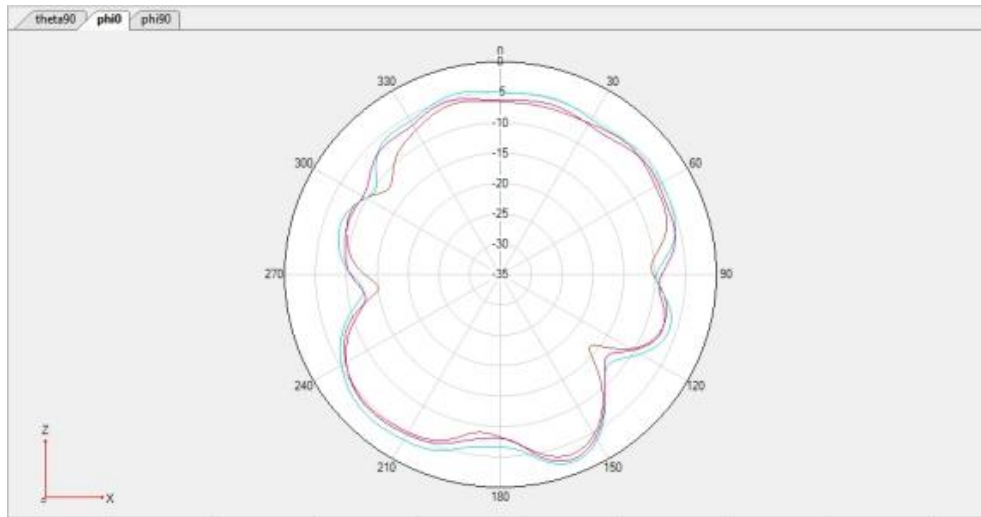
LTE B40/N40  $\Phi=0^\circ$



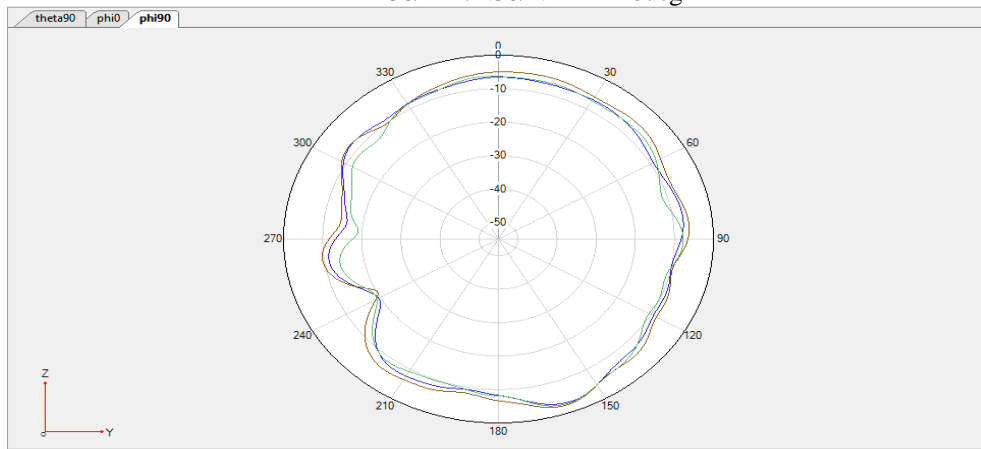
LTE B40/N40  $\Phi=90^\circ$



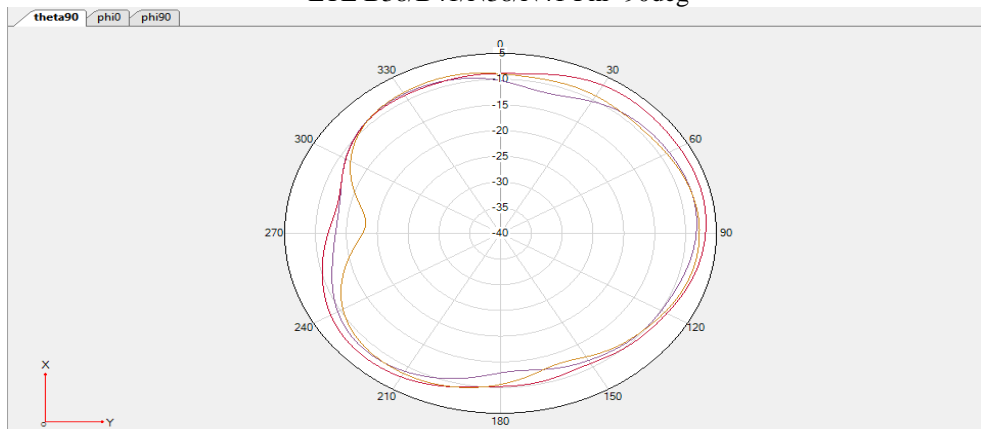
LTE B40/N40  $\Theta=90^\circ$



LTE B38/B41/N38/N41 Phi=0deg

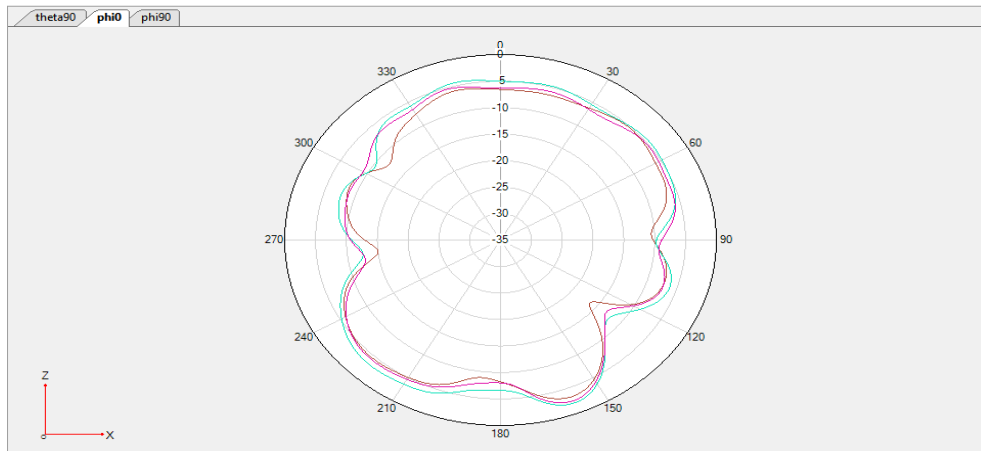


LTE B38/B41/N38/N41 Phi=90deg

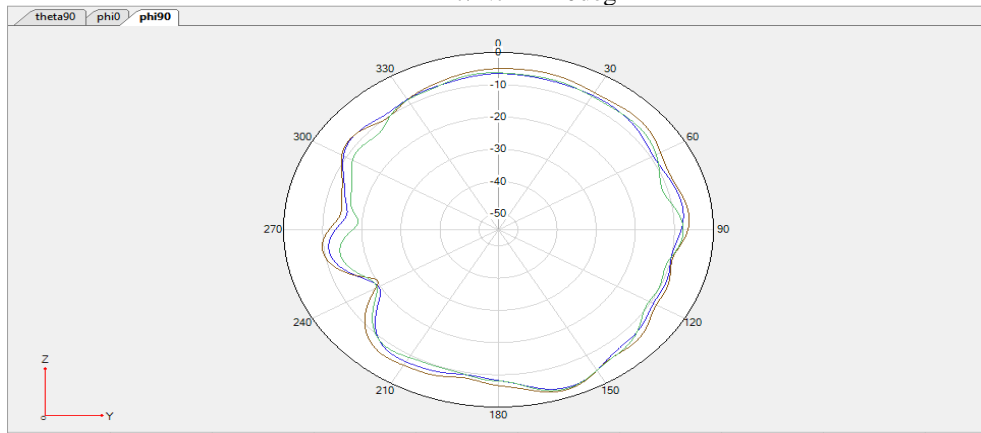


LTE B38/B41/N38/N41 Theta=90deg

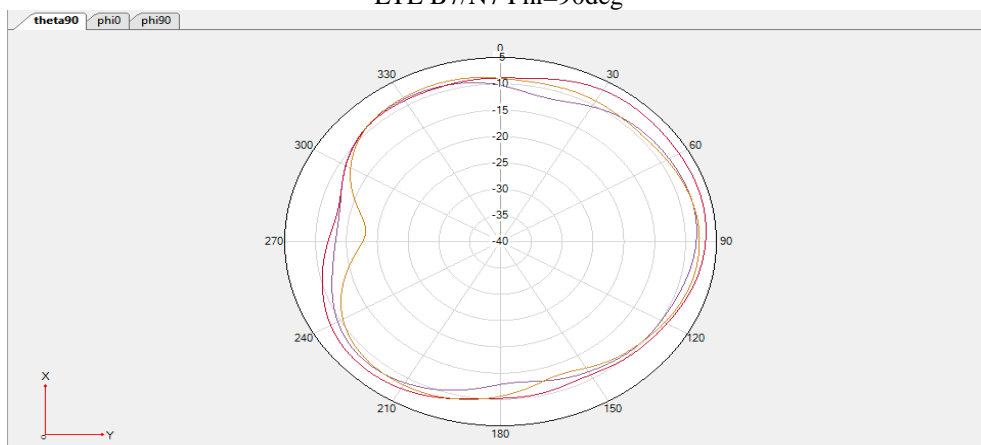




LTE B7/N7  $\Phi=0^\circ$



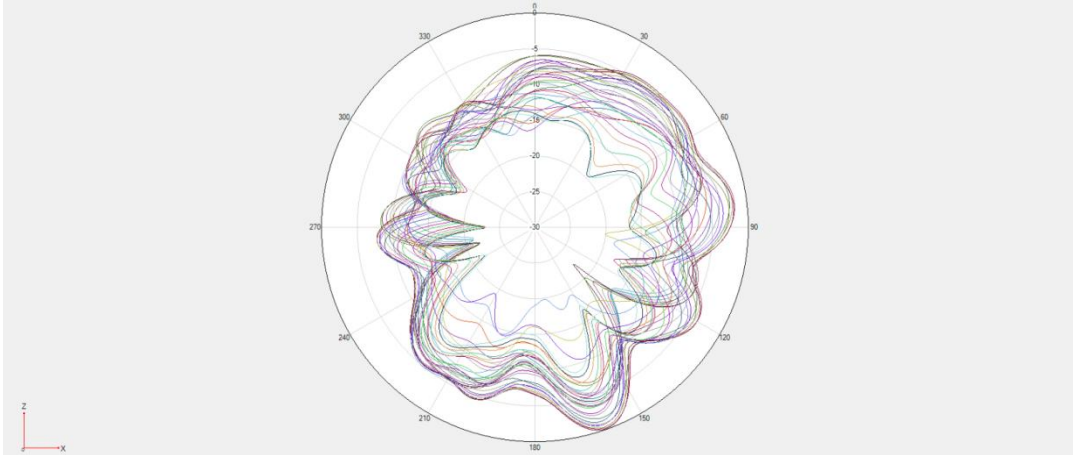
LTE B7/N7  $\Phi=90^\circ$



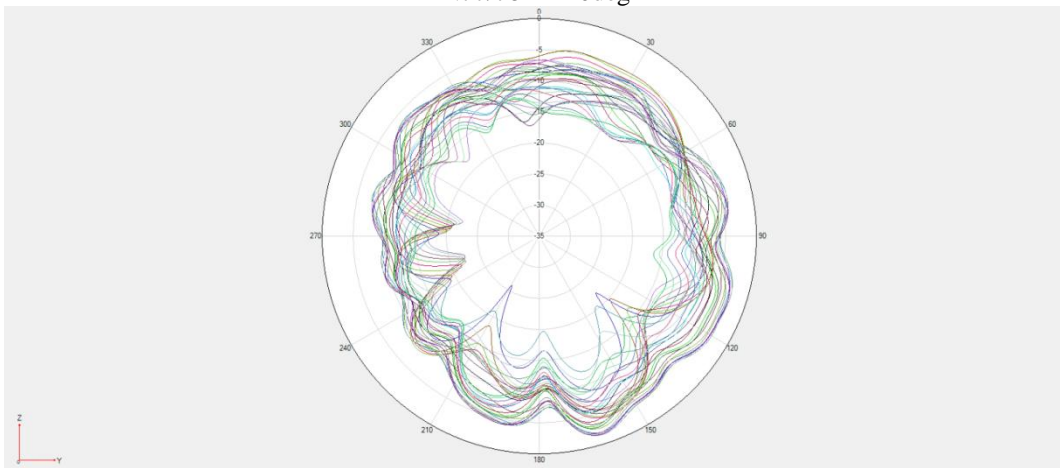
LTE B7/N7  $\Theta=90^\circ$

※ Antenna Gain

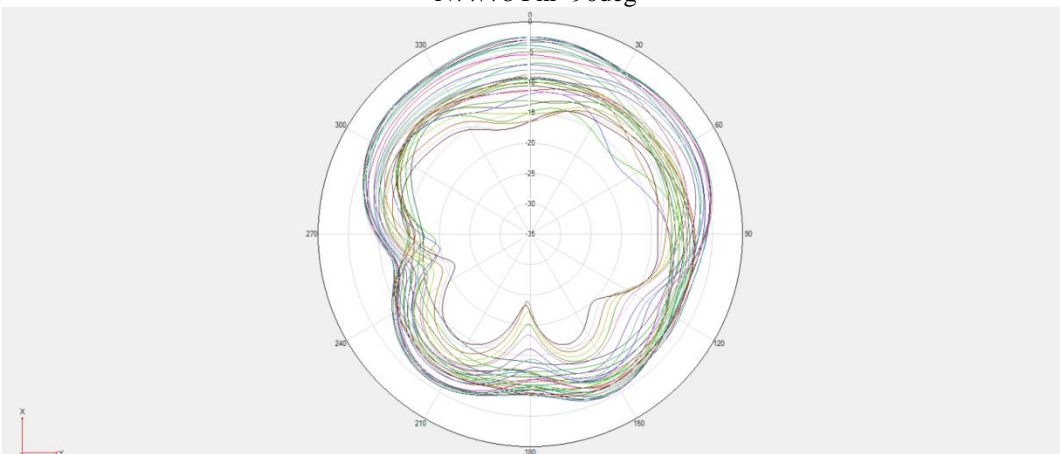
ANT5



N77/78 Phi=0deg



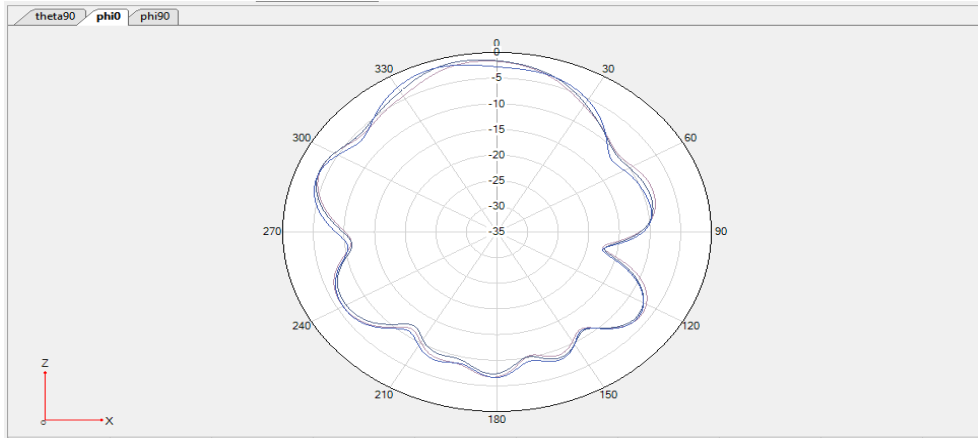
N77/78 Phi=90deg



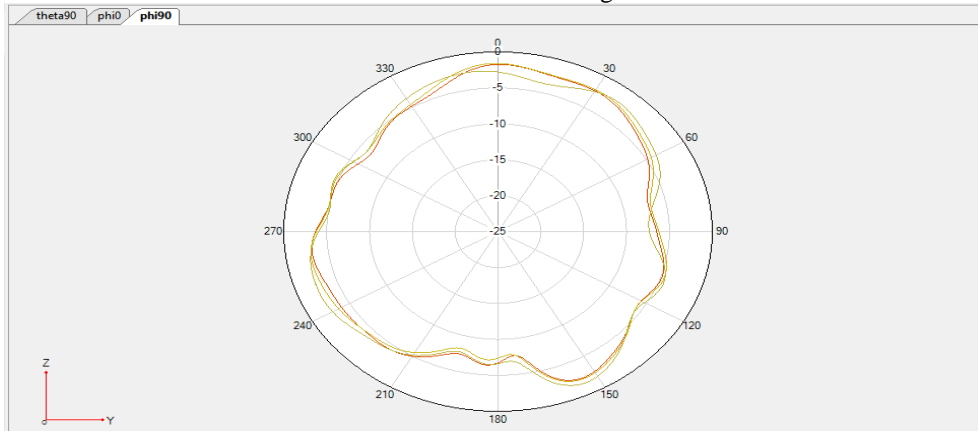
N77/78 Theta=90deg

※ Antenna Gain

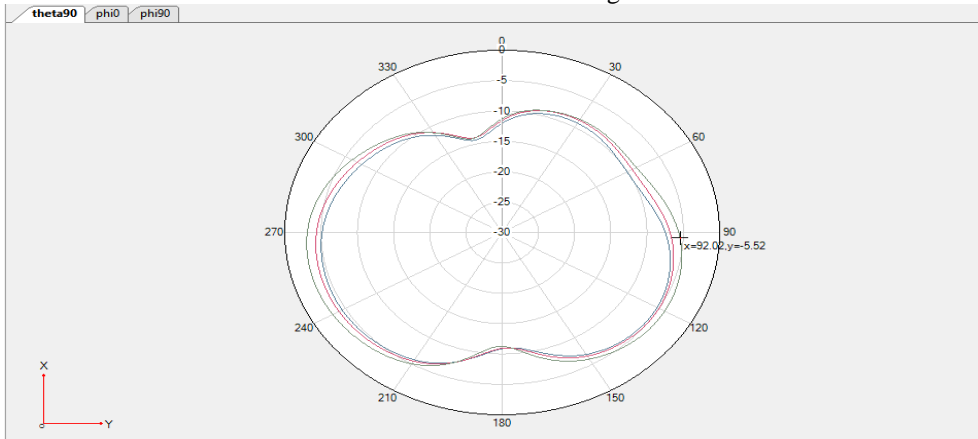
ANT6



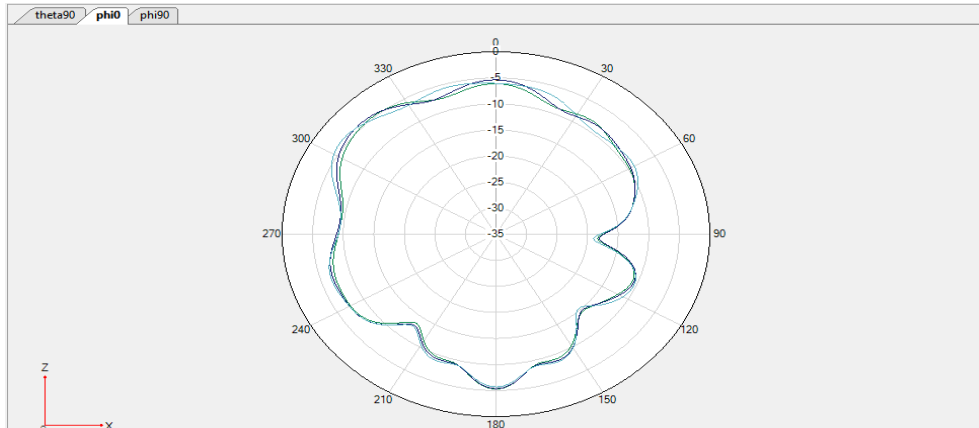
LTE B1/N1 Phi=0deg



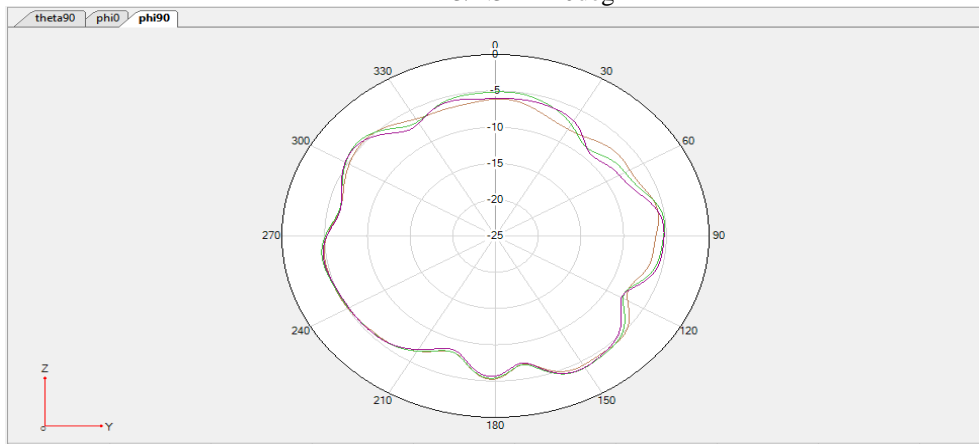
LTE B1/N1 Phi=90deg



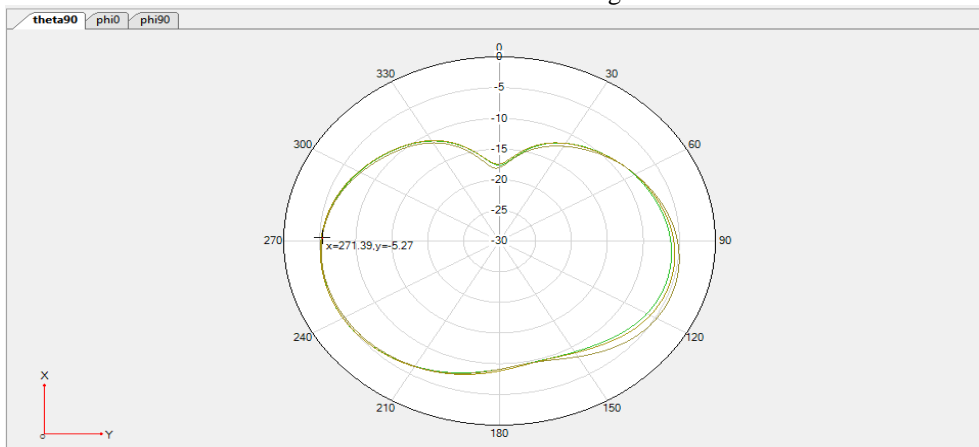
LTE B1/N1 Theta=90deg



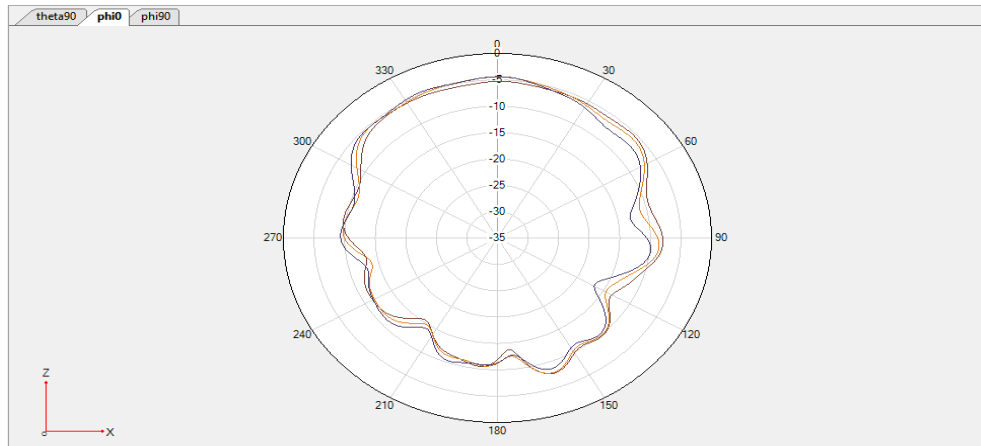
LTE B3/N3 Phi=0deg



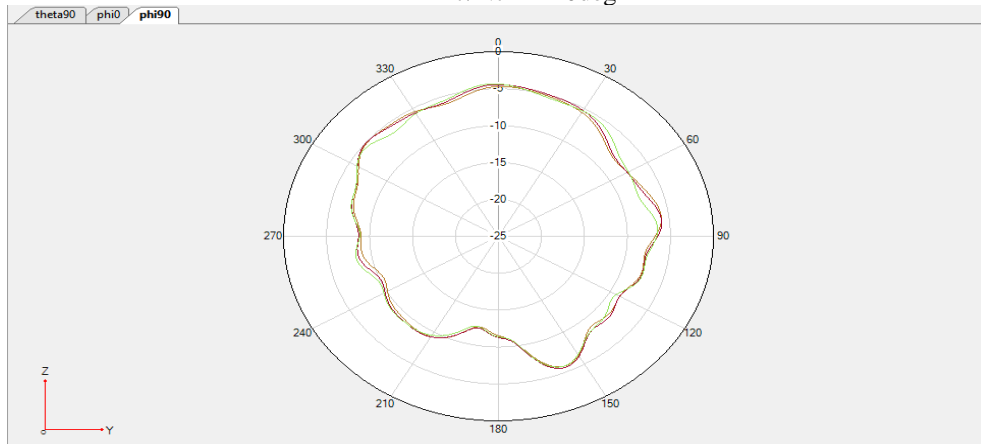
LTE B3/N3 Phi=90deg



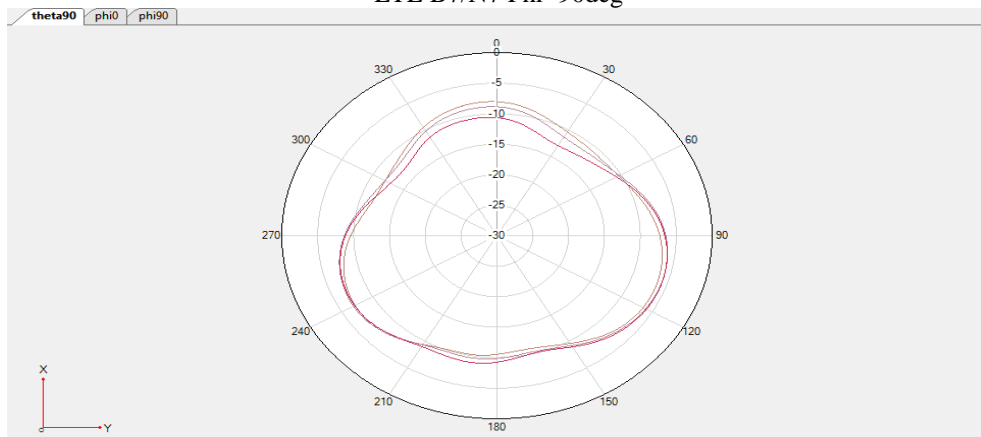
LTE B3/N3 Theta=90deg



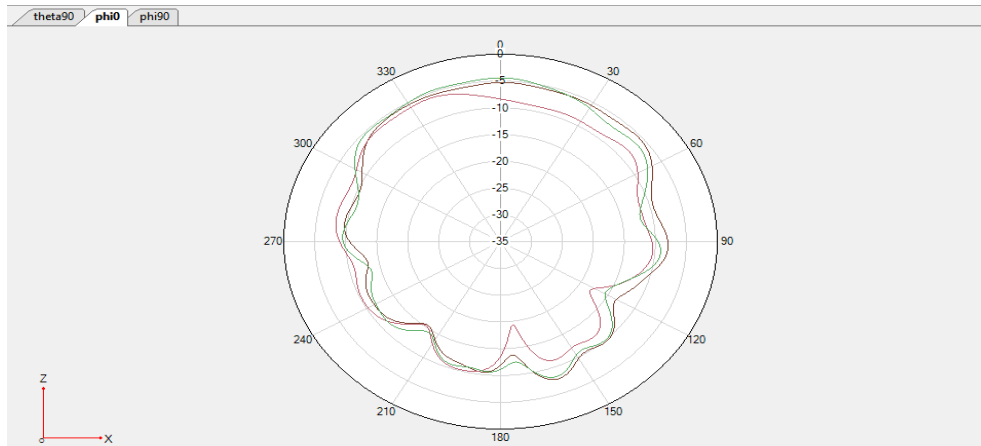
LTE B7/N7  $\Phi=0^\circ$



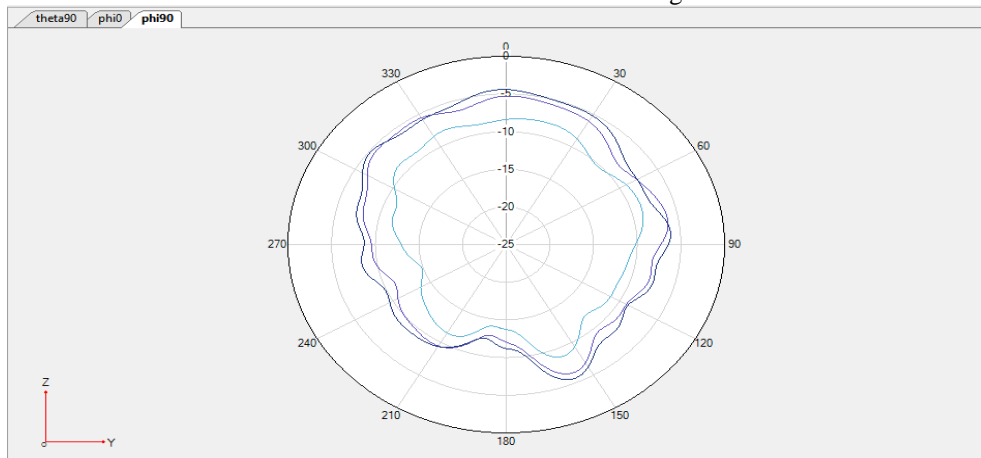
LTE B7/N7  $\Phi=90^\circ$



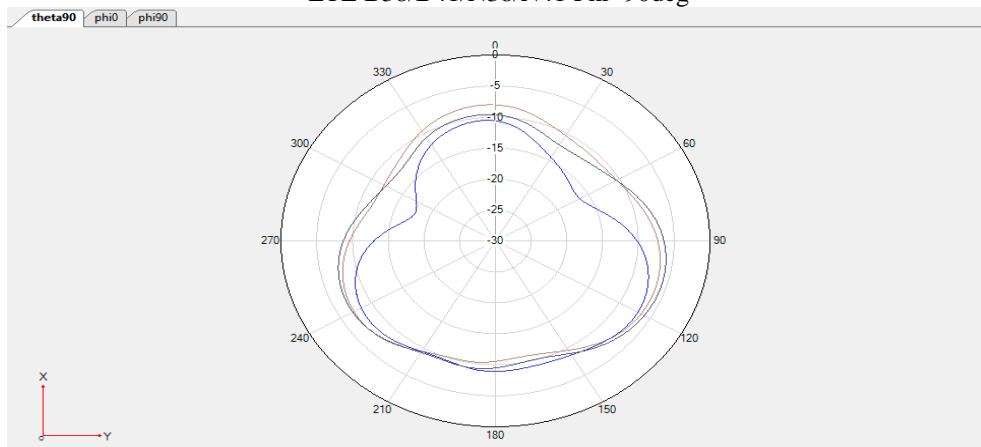
LTE B7/N7  $\Theta=90^\circ$



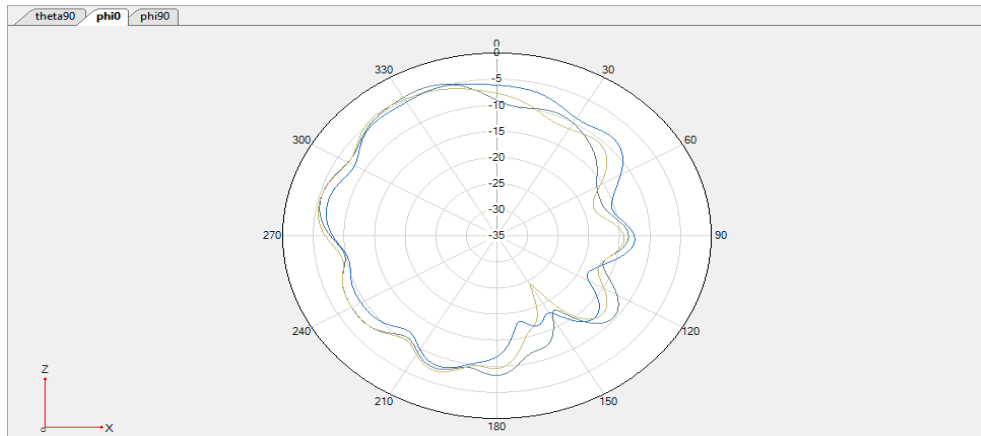
LTE B38/B41/N38/N41 Phi=0deg



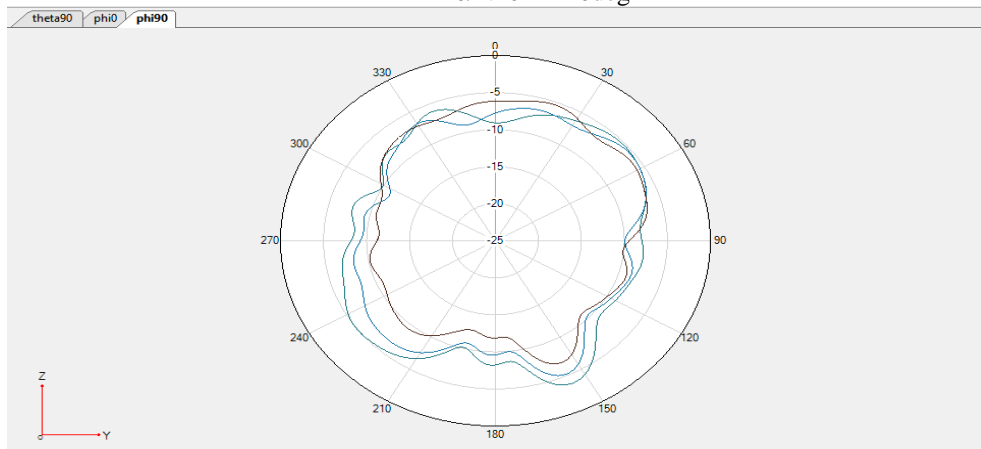
LTE B38/B41/N38/N41 Phi=90deg



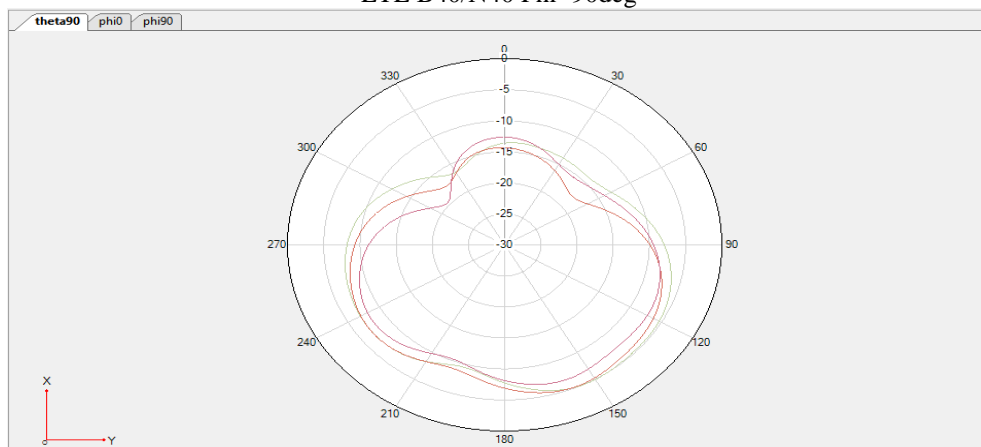
LTE B38/B41/N38/N41 Theta=90deg



LTE B40/N40  $\Phi=0^\circ$



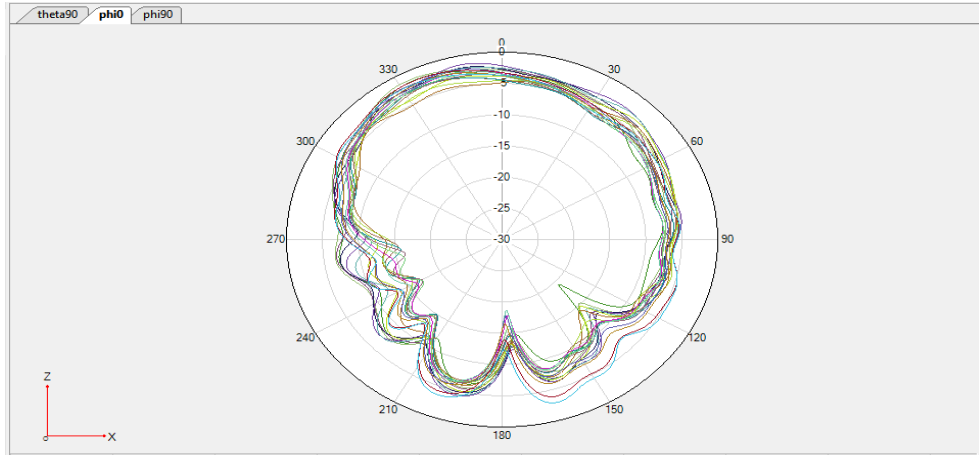
LTE B40/N40  $\Phi=90^\circ$



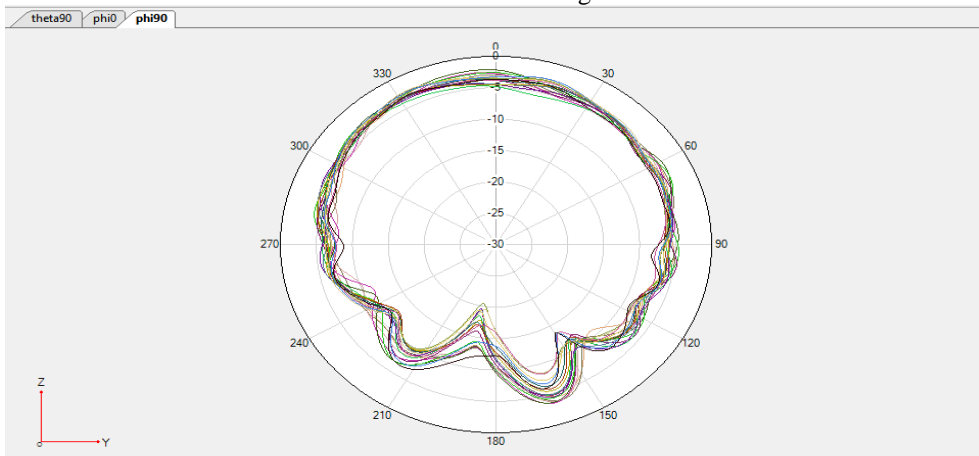
LTE B40/N40  $\Theta=90^\circ$

※ Antenna Gain

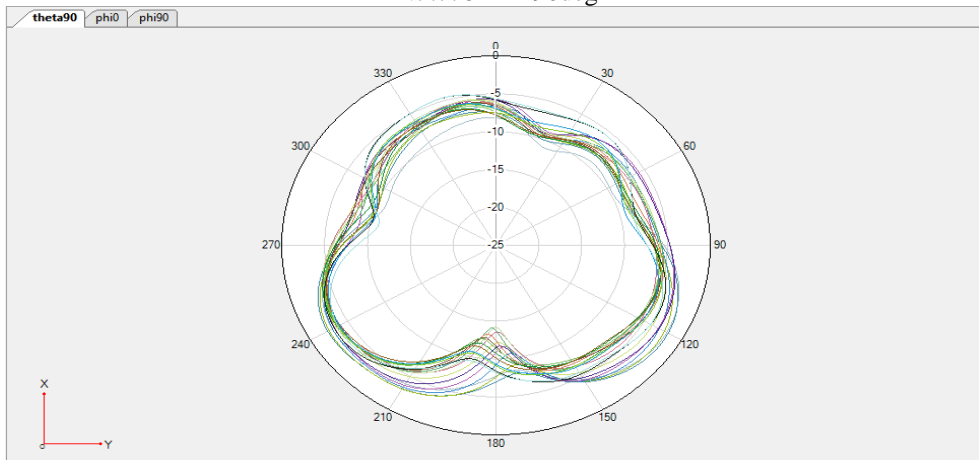
ANT7



N77/78 Phi=0deg



N77/78 Phi=90deg

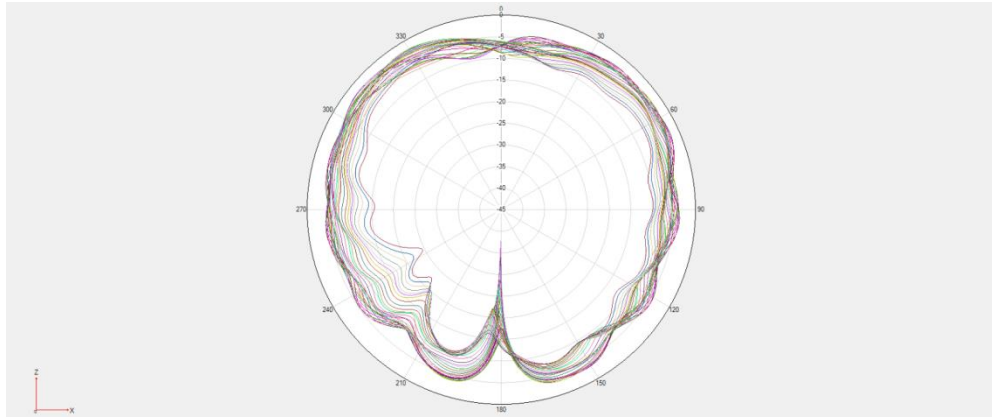


N77/78 Theta=90deg

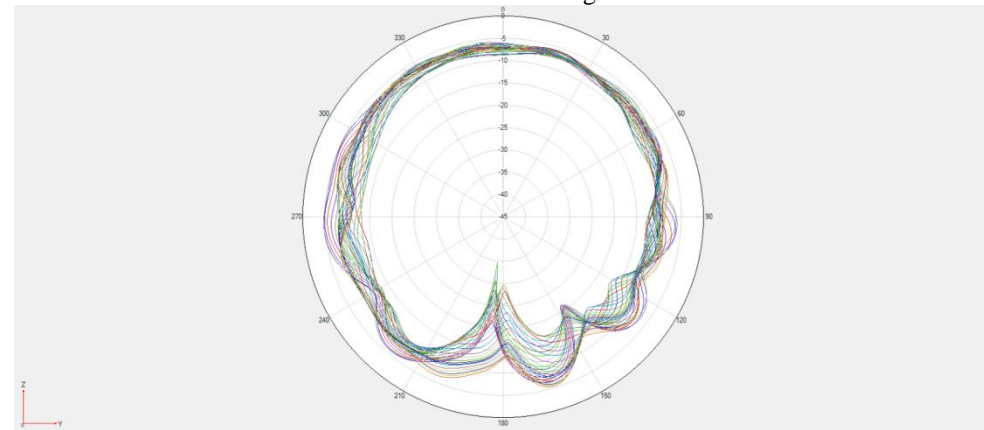


※ Antenna Gain

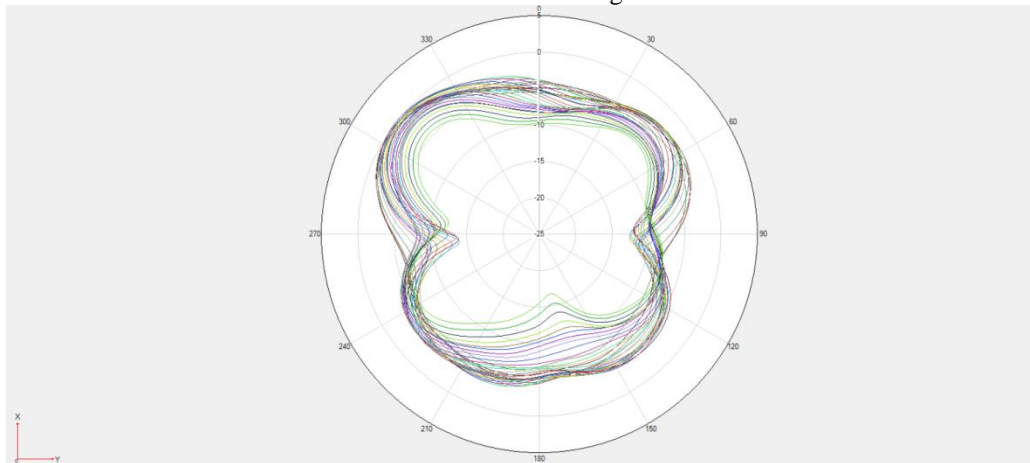
ANT8



N77/78 Phi=0deg

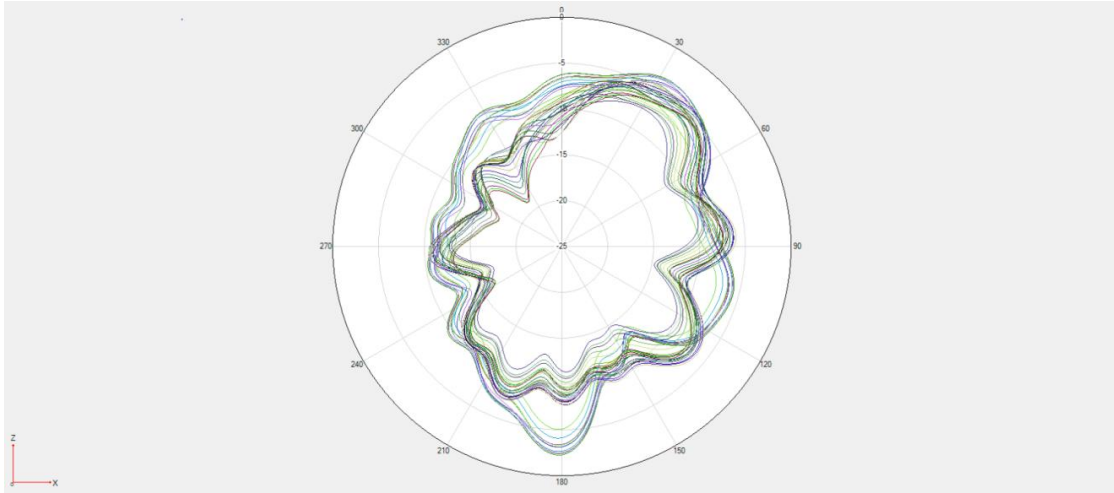


N77/78 Phi=90deg

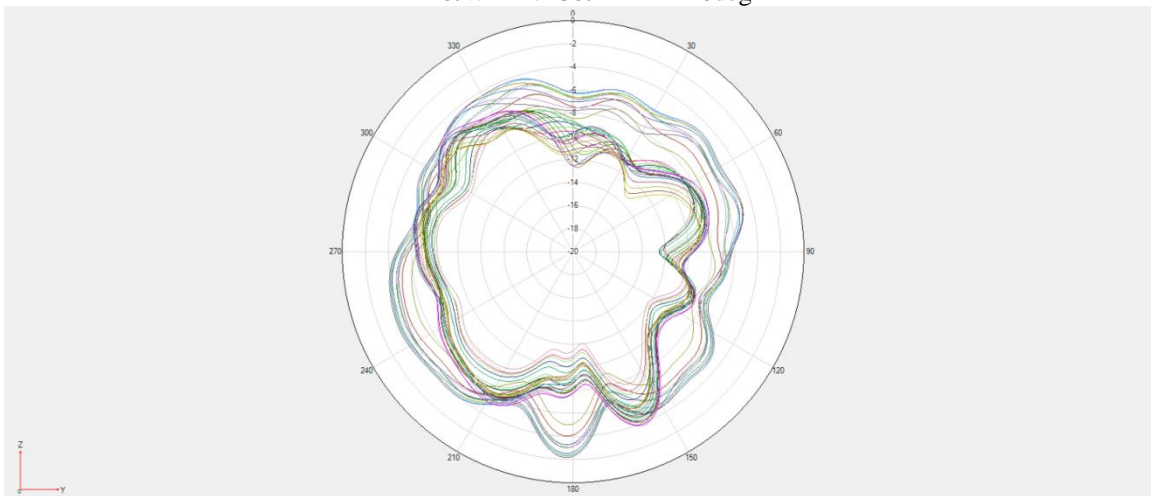


N77/78 Theta=90deg

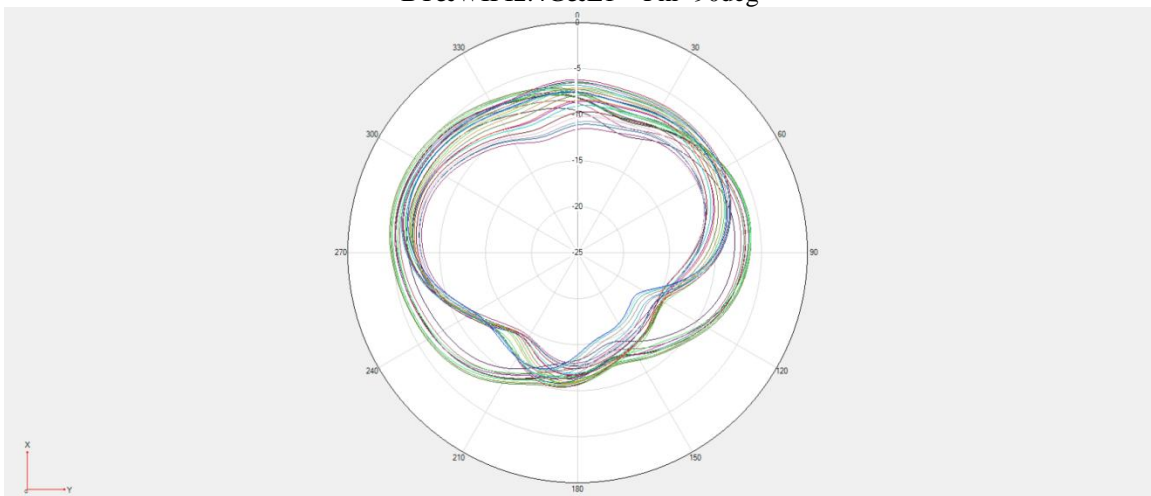
※ Antenna Gain  
ANT12



BT&WIFI2.4G&L1  $\Phi = 0^\circ$

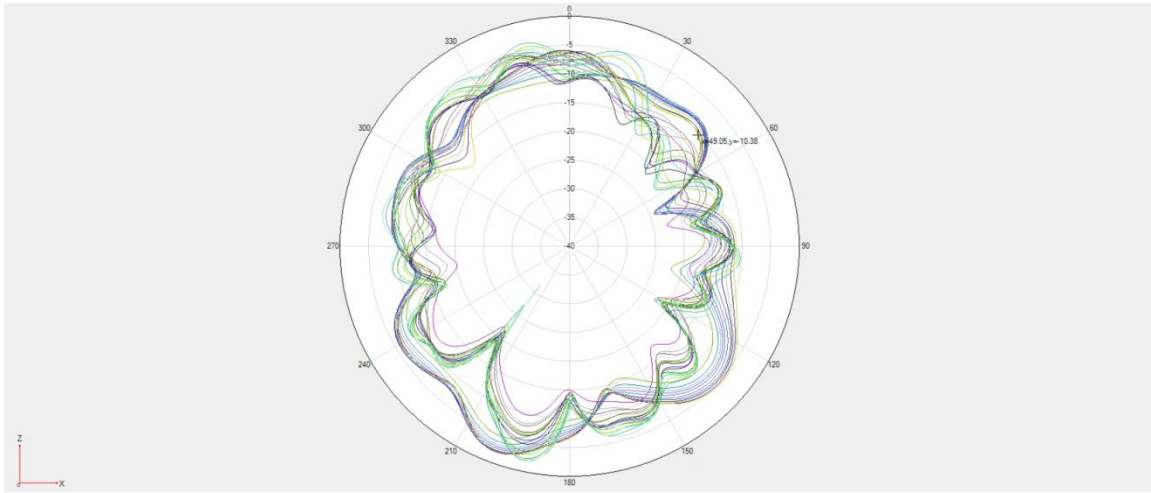


BT&WIFI2.4G&L1  $\Phi = 90^\circ$

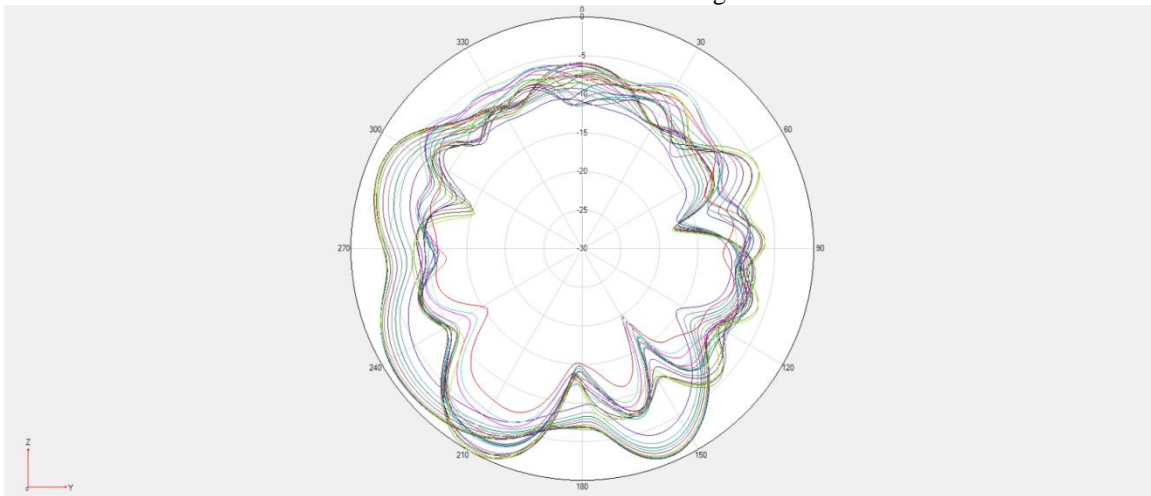


BT&WIFI2.4G&L1  $\Theta = 90^\circ$

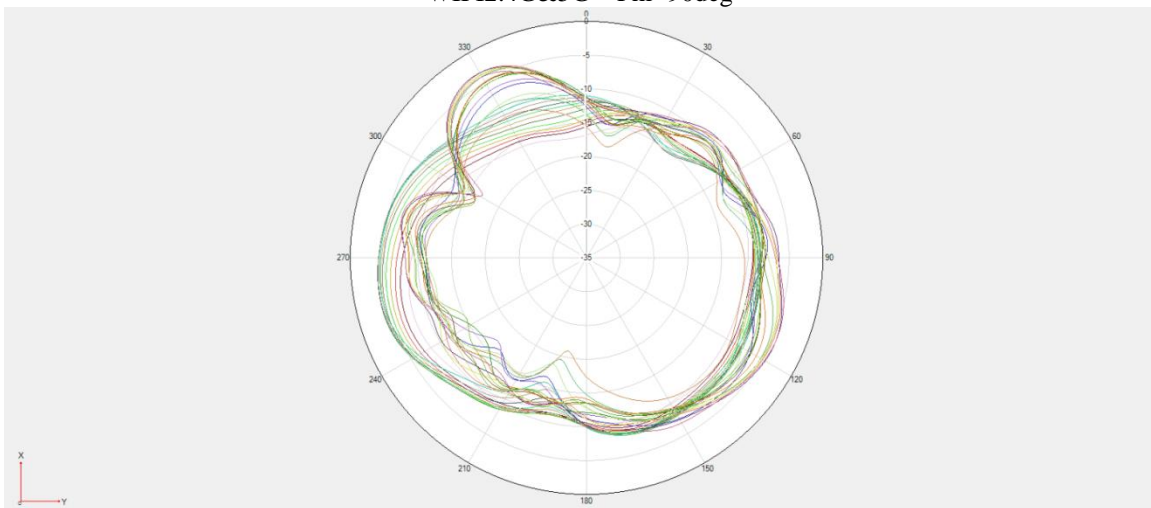
※ Antenna Gain  
ANT13



WIFI2.4G&5G  $\Phi=0^\circ$

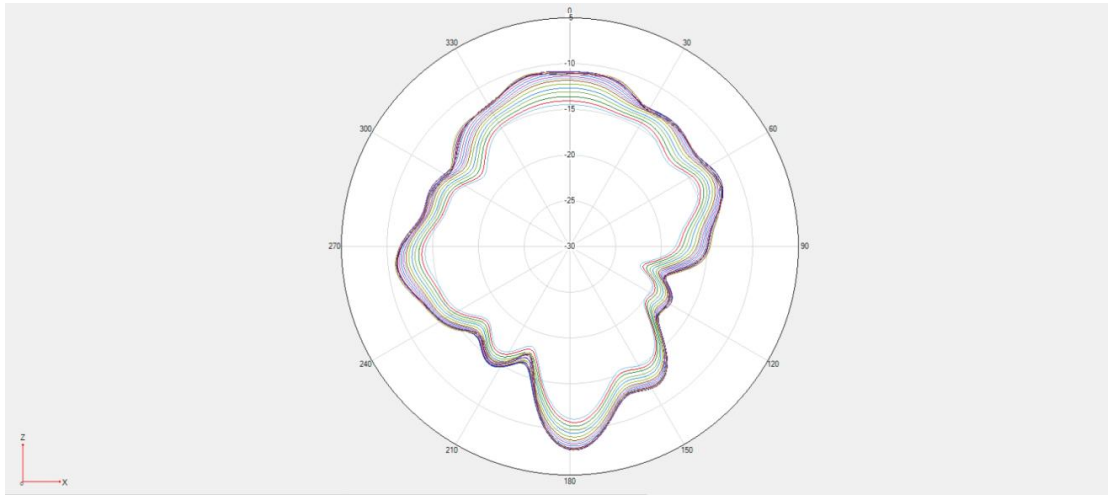


WIFI2.4G&5G  $\Phi=90^\circ$

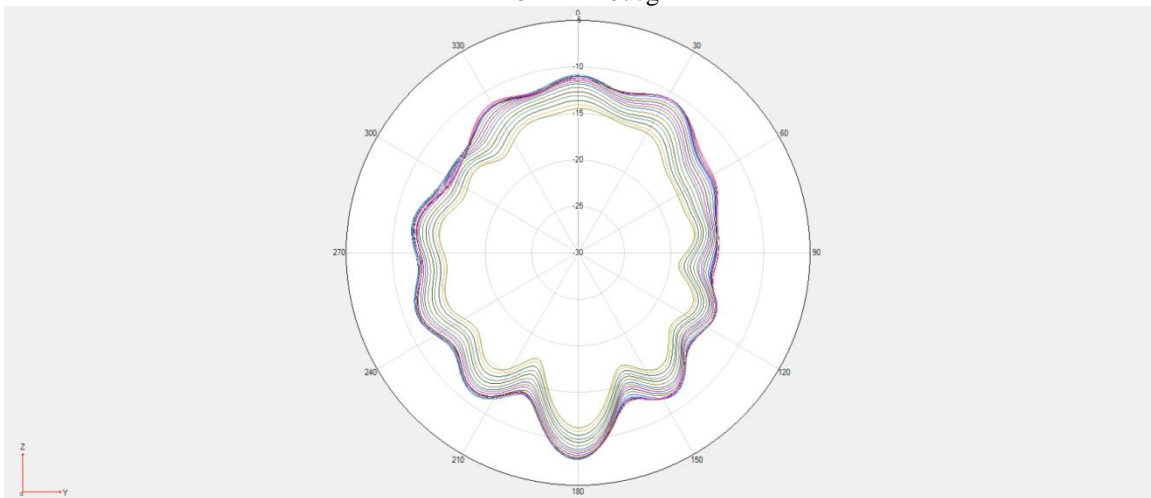


WIFI2.4G&5G  $\Theta=90^\circ$

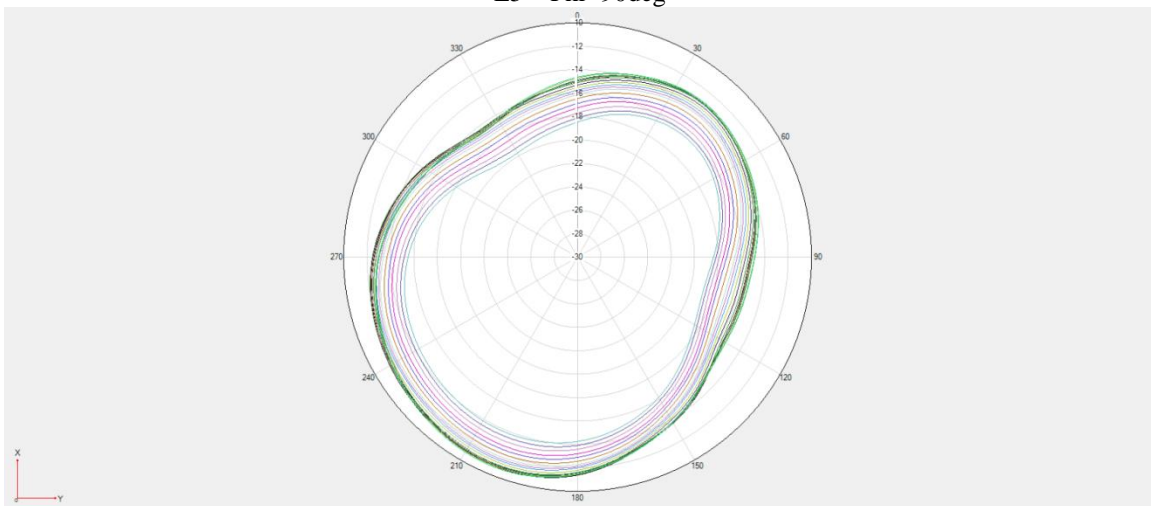
※ Antenna Gain  
ANT14



L5 Phi=0deg

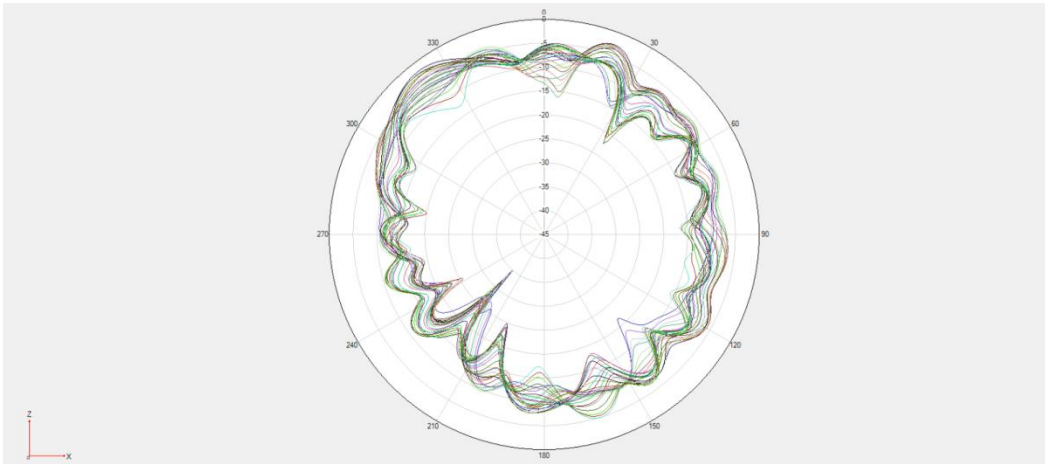


L5 Phi=90deg

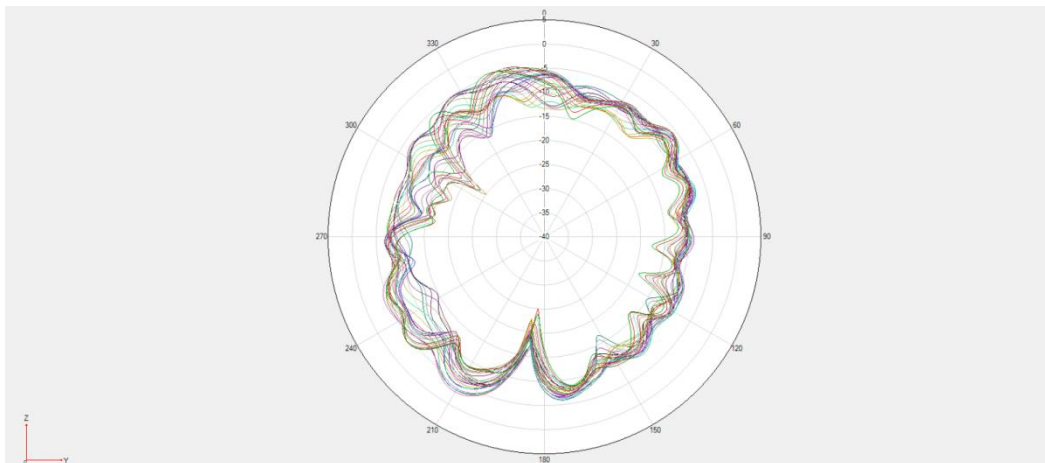


L5 Theta=90deg

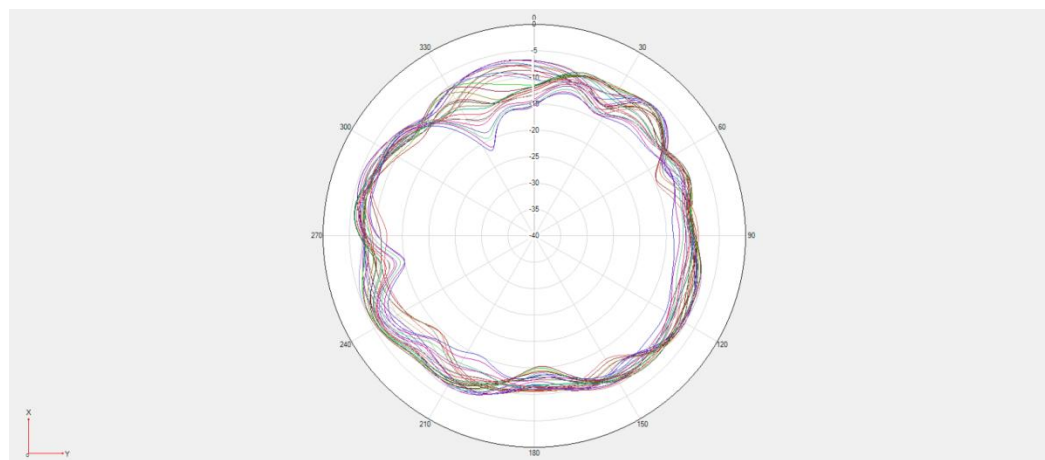
※ Antenna Gain  
ANT15



WIFI 5G  $\Phi=0^\circ$



WIFI 5G  $\Phi=90^\circ$



WIFI 5G  $\Theta=90^\circ$

Antenna Location:

