



Feature

- ※ High gain
- ※ Omani-directional
- ※ Wide bandwidth

Main Antenna

Application

- ※ GSM850/900/DCS/PCS/WCDMA B1/B2/B4/B5/B8
- LTE B1/B2/B3/B4/B5/B7/B8/B12/B17/B20/B28/B38/B40/B41/B66
- 5G NR n1/3/5/7/8/12/20/28/66/38/40/41/77/78
- communication applications

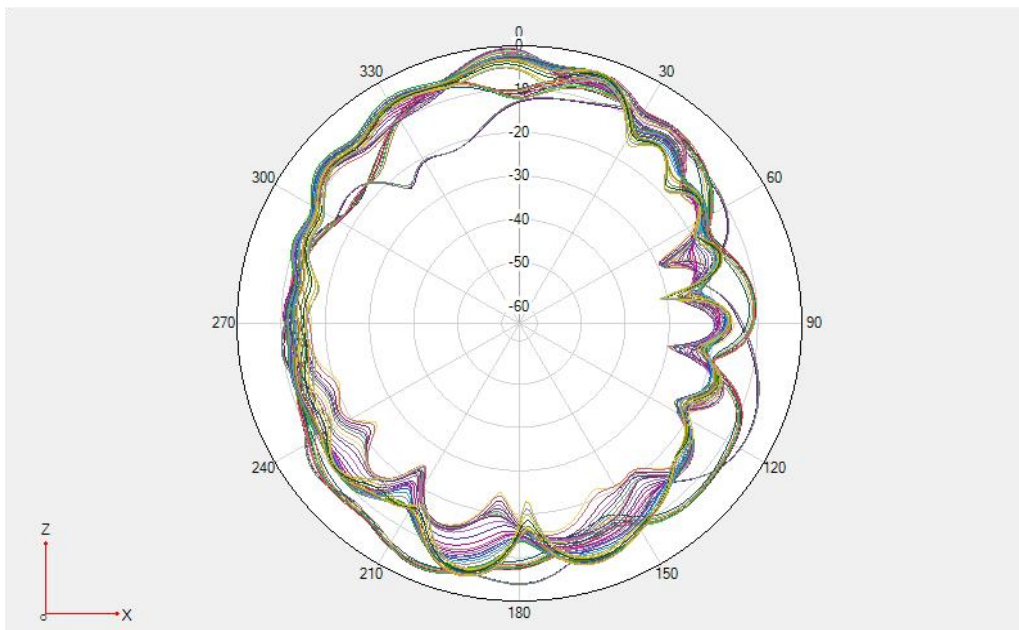
Name and address of the antenna manufacturer	Model number of the antenna
Zhejiang HAITONG Communication Electronics Co., Ltd. (Xi'an branch) Block A11, Phase II, Software New City, Yuhuazhai Street, High-tech Zone, Yanta District, Xi'an City, Shaanxi Province	ANT0-LMHB MAIN;ANT1-LMHB;ANT2-N77/78;ANT3-N7/40/41/77/78;ANT4-N1/3/77/78;ANT5-N1/3/7/40/41/77/78;ANT6-WIFI2.4G/5G;ANT7-GPS L1+2.WIFI2.4G/5G;ANT8 -GPS L5



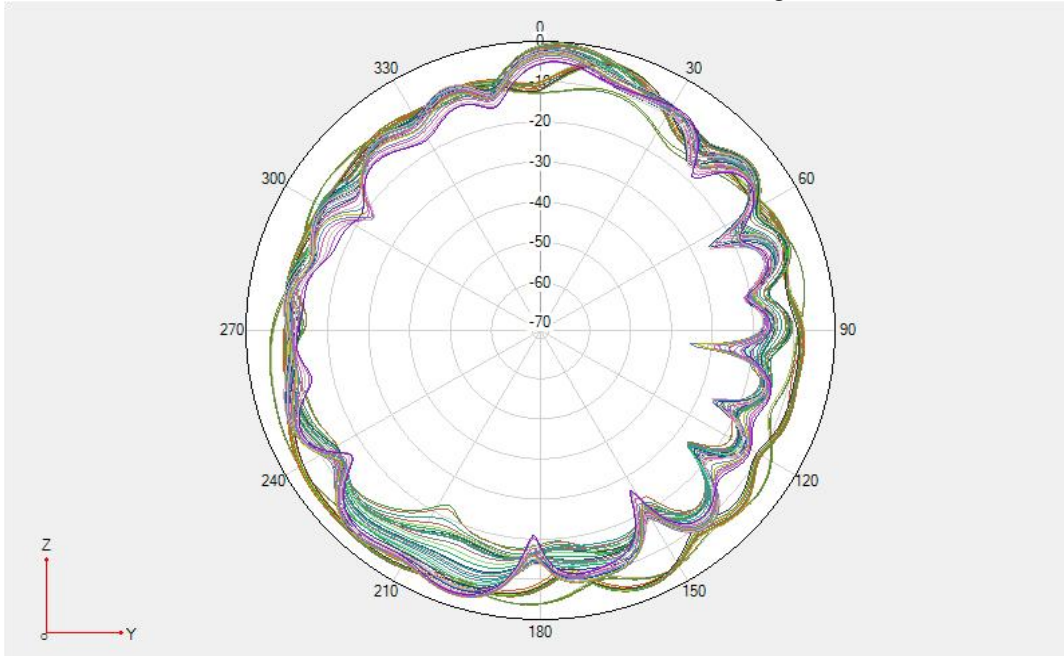
TYPE	
Transmitter Frequency	GSM 850/WCDMA B5/LTE B5/NR N5: 824 - 849 MHz
	GSM 900/WCDMA B8/LTE B8/NR N8: 880 - 915 MHz
	DCS /WCDMA B4/LTE B3/B4/B66/NR N3/N66: 1710 - 1785 MHz
	PCS/WCDMA B2/LTE B2:1850-1910MHz
	WCDMA B1/LTE B1/NR N1: 1920 - 1980MHz
	LTE B7/NR N7:2496-2565MHz
	LTE B40/NR N40:2300-2400MHz
	LTE B38/B41/NR N38/N41:2565-2645MHz
	LTE B20/NR N20:832-862MHz
	LTE B12/B17/B28/NR N12/N28:710-755MHz
NR N77/N78:3300-4200MHZ	
Receiver Frequency	GSM 850/WCDMA B5/LTE B5/NR N5: 869 - 894 MHz
	GSM 900/WCDMA B8/LTE B8/NR N8: 925 - 960 MHz
	DCS/LTE B3/B66/NR N3/N66: 1805 - 1880 MHz
	WCDMA 4/LTE B4: 2110-2155 MHz
	PCS/WCDMA B2/LTE B2:1930-1990MHz
	WCDMA B1/LTE B1/NR N1: 2110 - 2170MHz
	LTE B7/NR N7:2620-2690MHz
	LTE B40/NR N40:2300-2400MHz
	LTE B38/41/NR N38/N41:2565-2645MHz
	LTE B20/NR N20:791-821MHz
	LTE B12/B17/B28/NR N12/N28:758-803MHz
	NR N77/N78:3300-4200MHZ
RF-Output Power (E.I.R.P)	GSM850/900: 32+/-2dBm
	DCS/PCS: 30+/-2dBm
	LTE B1/B2/B3/ B4/B5 /B7/B8/B12/B17/B20/B28/B38/B40/B41/B66: 23+/-2dBm
	NR N1/N3/N5/N7/N8/N12/N20/N28/N66/N38/N40/N41/N77/N78: 23+/-2dBm
Main Antenna Gain	WCDMA B1/B2/B4/B5/ B8: 23+/-2dBm
	GSM 850/WCDMA B5/LTE B5/NR N5: -1.5

(Peak Gain)	GSM 900/WCDMA B8/LTE B8/NR N8: -1.3	
	DCS/WCDMA B4/ LTE B3/B4/B66/NR N3/N66: -0.7	
	PCS/WCDMA B2/LTE B2: -0.5	
	WCDMA B1/LTE B1/NR N1: -0.5	
	LTE B7/B38/B41/NR N7/N38/N41: -0.4	
	LTE B40/NR N40:-0.2	
	LTE B20/NR N20:-1.5	
	LTE B12/B17/B28/NR N12/N28:-1.9	
	NR N77/N78:-0.3	
	ENDC LTE B1: -1.6	
	ENDC LTE B3: -1.7	
	ENDC LTE B7: -1.3	
	ENDC LTE B38: -1.3	
	ENDC LTE B40: -1.4	
ENDC LTE B41: -1.3		
3in1 Antenna Gain (Peak Gain)	GPS: -3.31	
	ANT7:WIFI 2.4G: -2.45	5G: -0.12
	ANT6:WIFI 2.4G: -3.25	5G: -0.9
Type of Modulation		

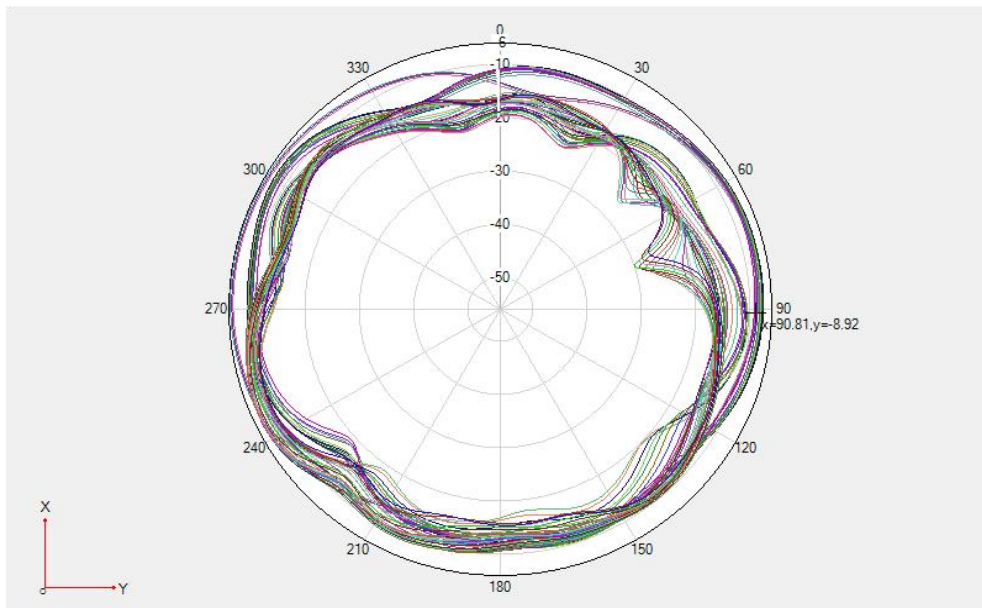
※ Antenna Gain



GPS&2.4G WIFI&BT; 5G WIFI Phi=0deg

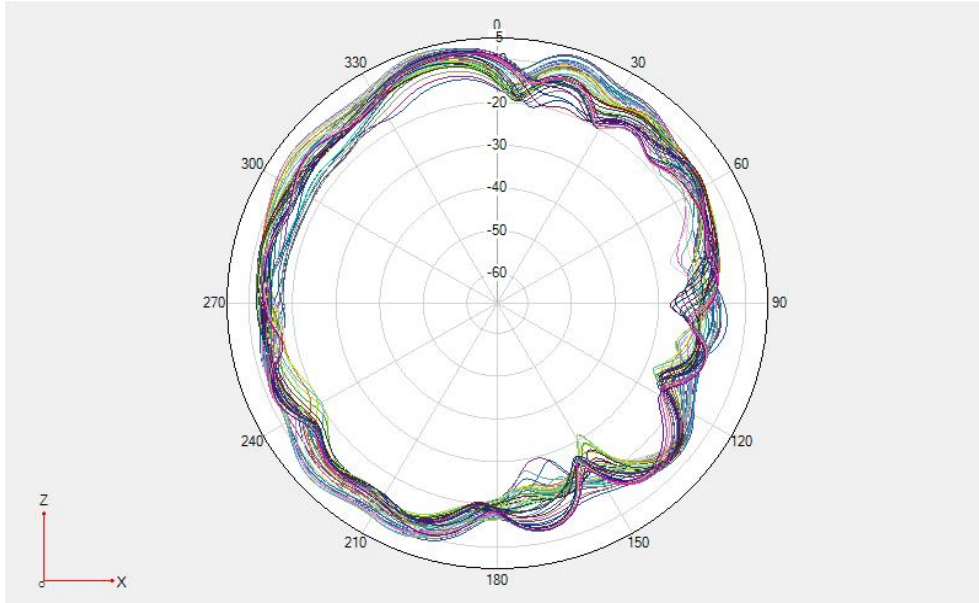


GPS&2.4G WIFI&BT; 5G WIFI Phi=90deg

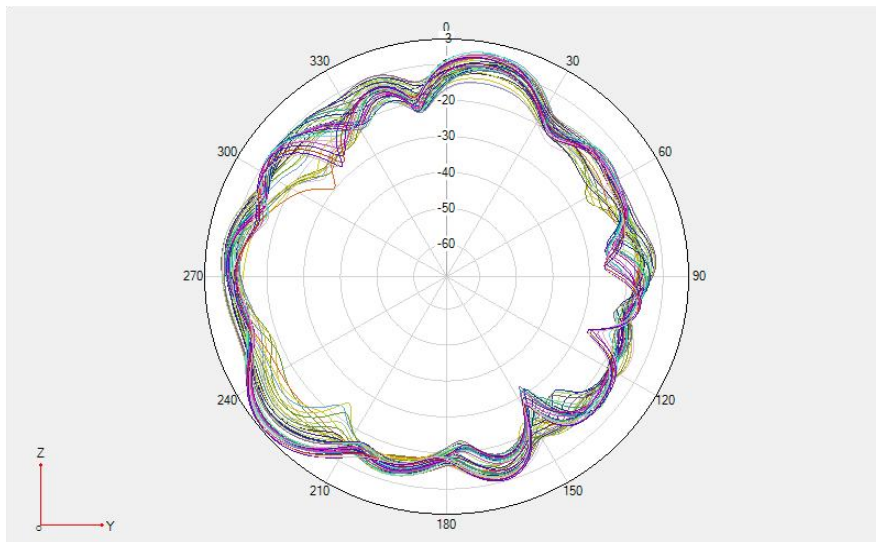


GPS&2.4G WIFI&BT; 5G WIFI Theta=90deg

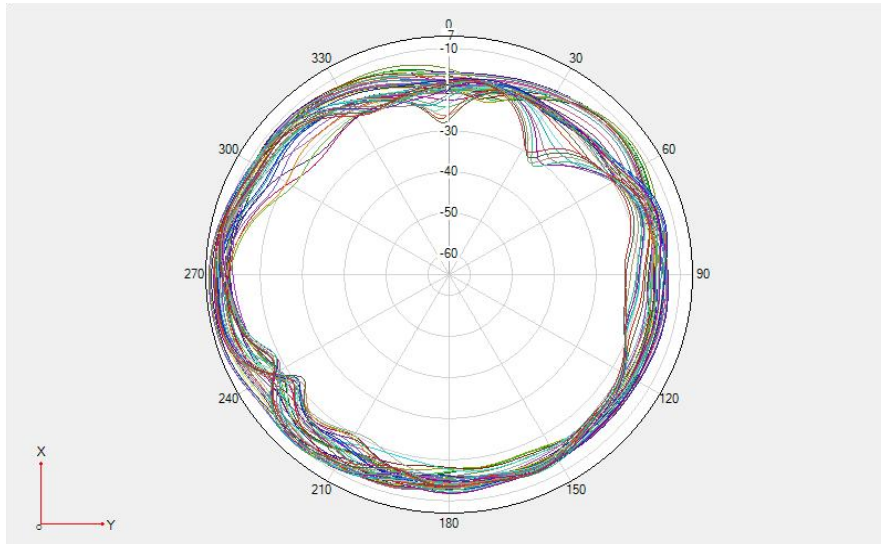
※ Antenna Gain



n77/78 $\Phi = 0^\circ$

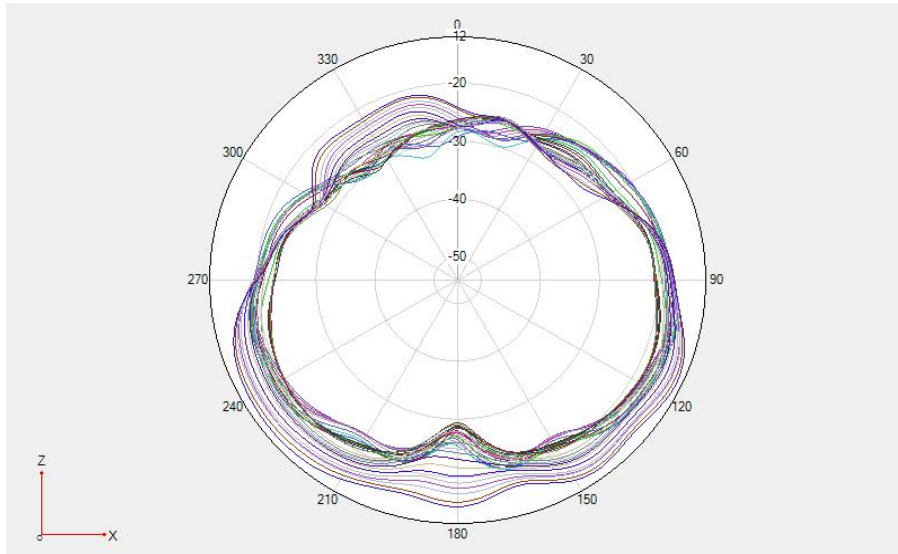


n77/78 $\Phi = 90^\circ$

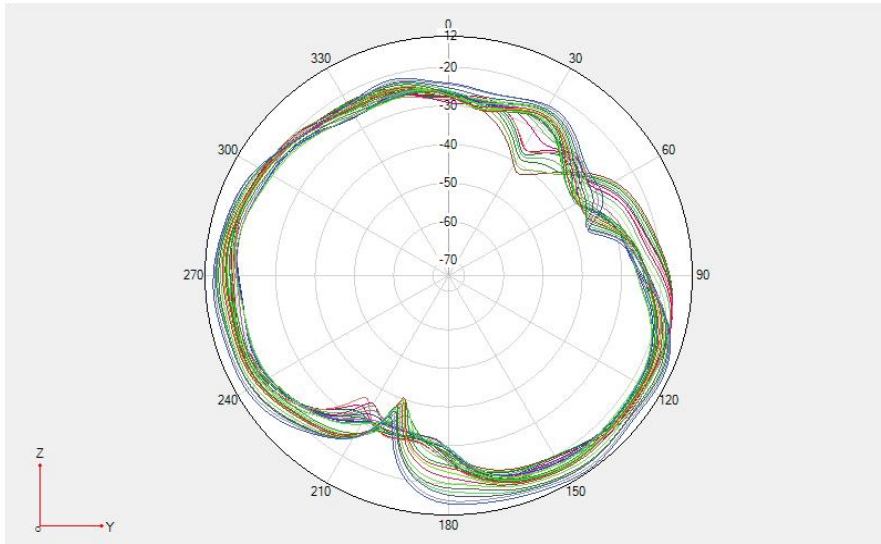


n77/78 Theta=90deg

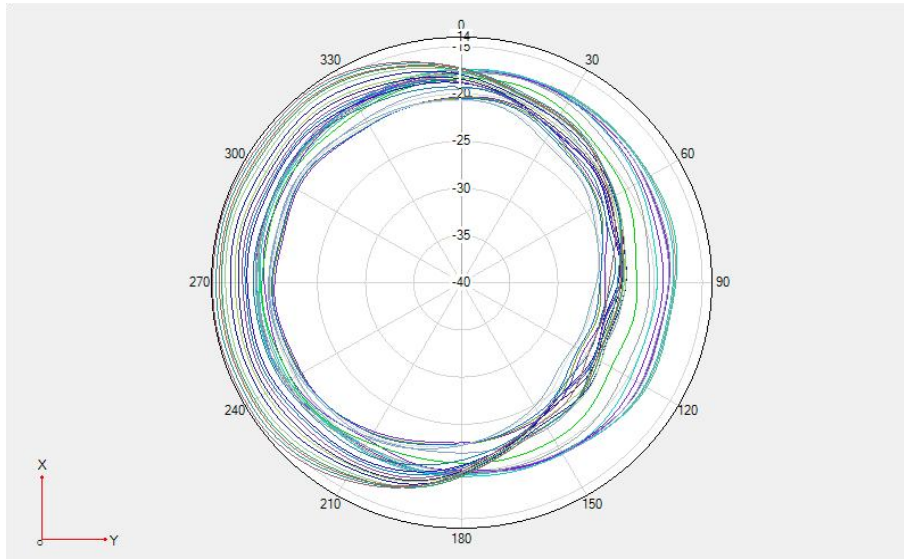
※ Antenna Gain



GSM850/900 / WCDMA B5/B8 / LTE B5/B8/B12/B17/B20/B28 NR n5/n8/n20/n28 $\Phi=0^\circ$

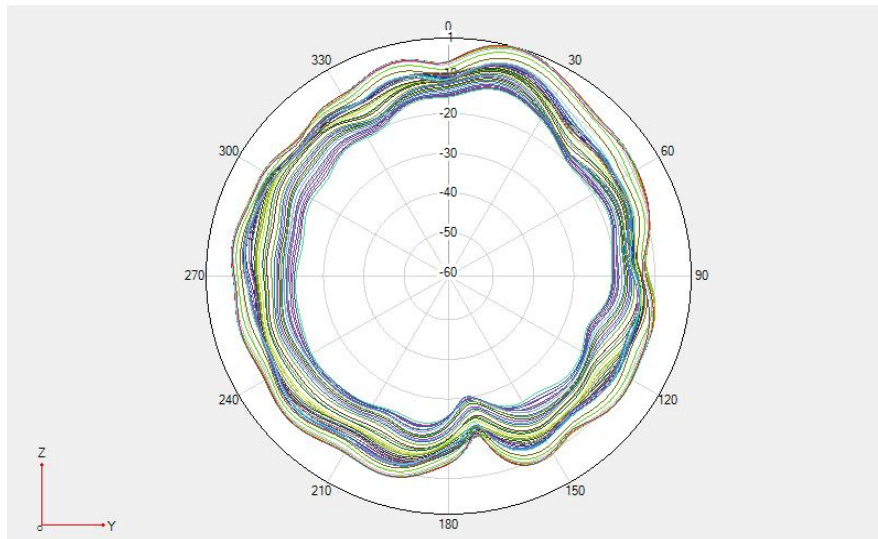


GSM850/900 / WCDMA B5/B8 / LTE B5/B8/B12/B17/B20/B28 NR n5/n8/n20/n28 $\Phi=90^\circ$

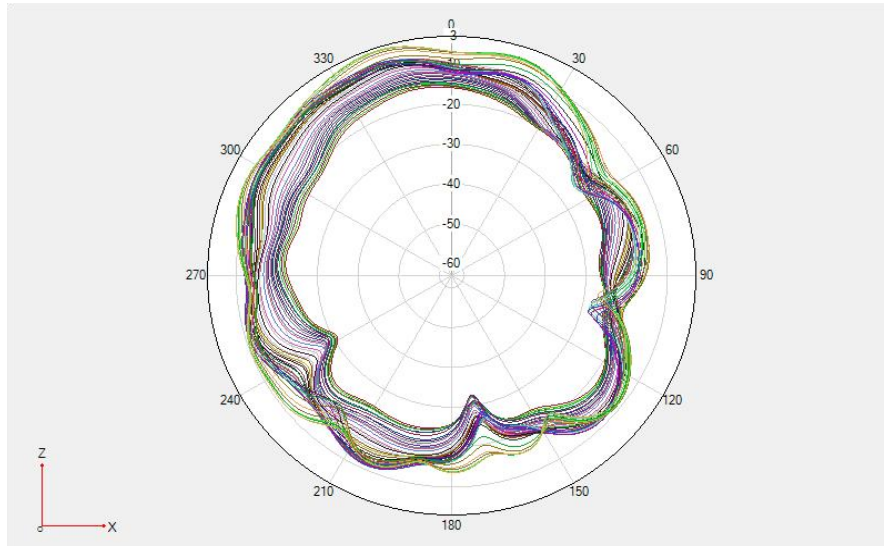


GSM850/900 / WCDMA B5/B8 / LTE B5/B8/B12/B17/B20/B28 NR n5/n8/n20/n28 Theta=90deg

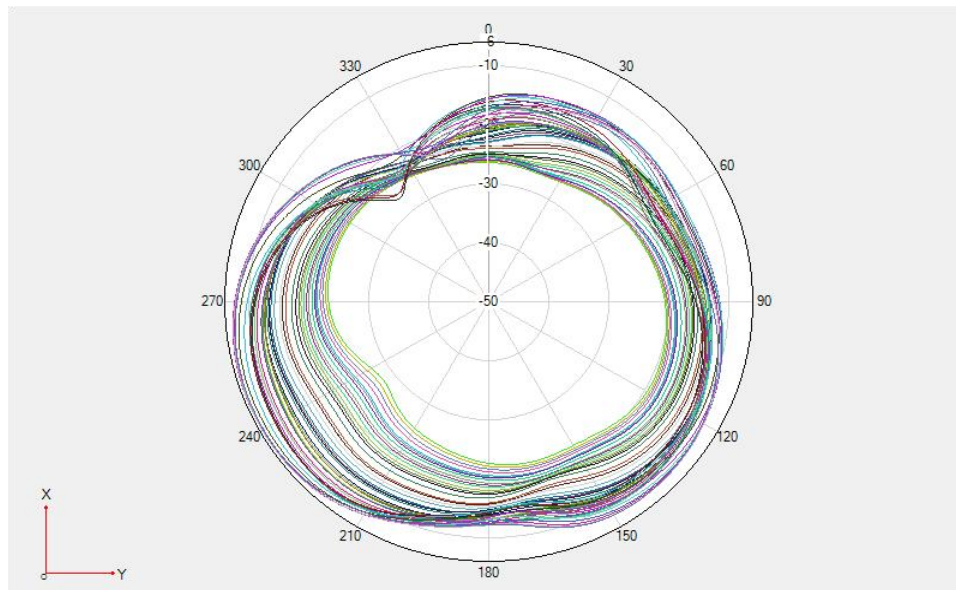
※ Antenna Gain



DCS1800/PCS1900/WCDMA B1/B2/B4/ LTE B1/B2/B3/B4/B66 NR n1/n3 Phi=0deg

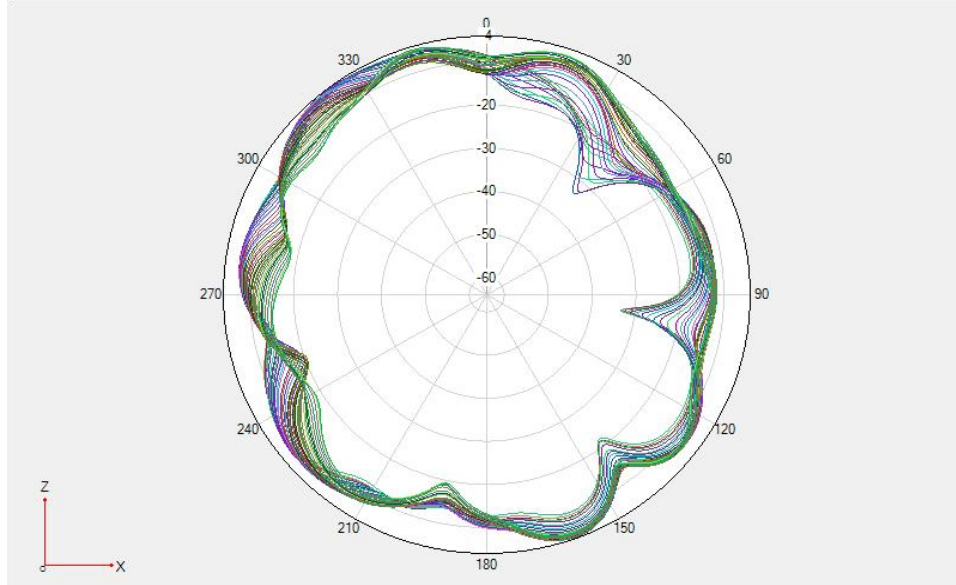


DCS1800/PCS1900/WCDMA B1/B2/B4/ LTE B1/B2/B3/B4/B66 NR n1/n3 Phi=90deg

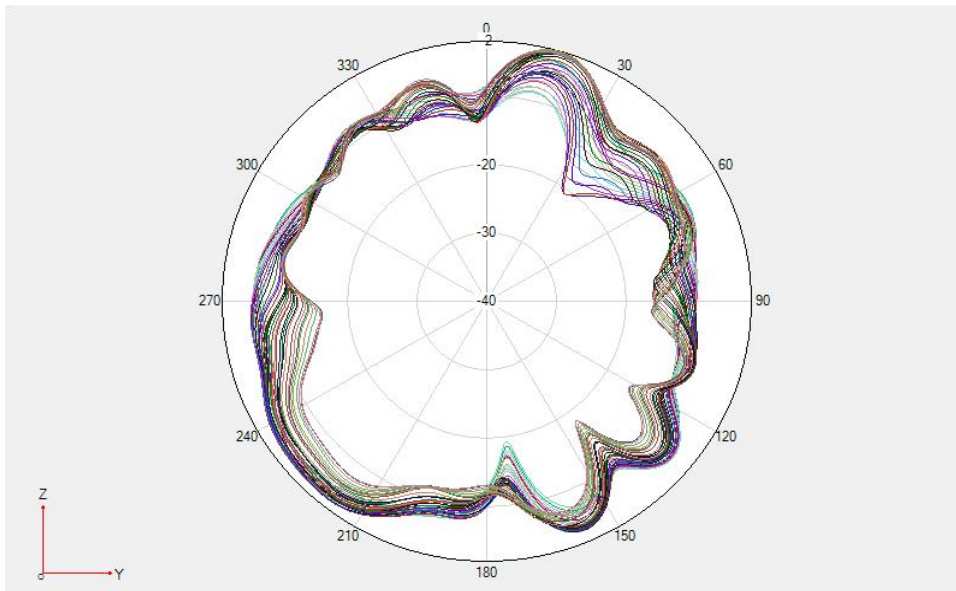


DCS1800/PCS1900/WCDMA B1/B2/B4/ LTE B1/B2/B3/B4/B66 NR n1/n3 Theta=90deg

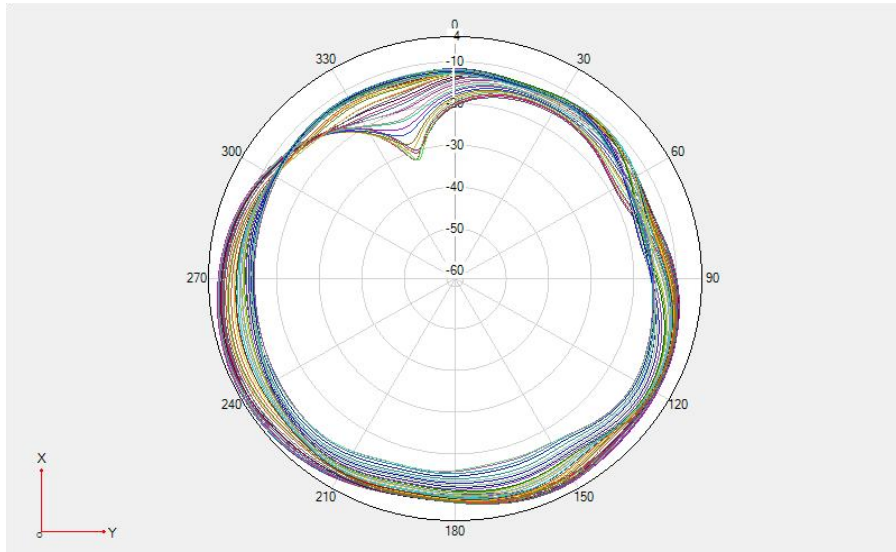
※ Antenna Gain



LTE B7/B38/B40/41 NR n7/n38/n40/n41 $\Phi=0^\circ$



LTE B7/B38/B40/41 NR n7/n38/n40/n41 $\Phi=90^\circ$



LTE B7/B38/B40/41 NR n7/n38/n40/n41 Theta=90deg

PREPARED BY	CHECKEDBY	APPROVAL BY	S.R.NO	
	Yuehua.sun		DATE:	2021/1/18