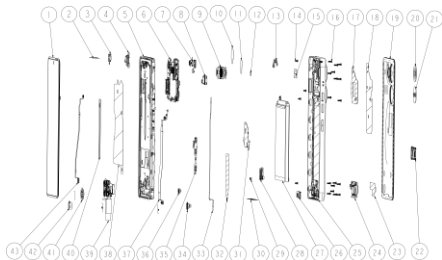


# **TECNO CAMON 20**

User Manual

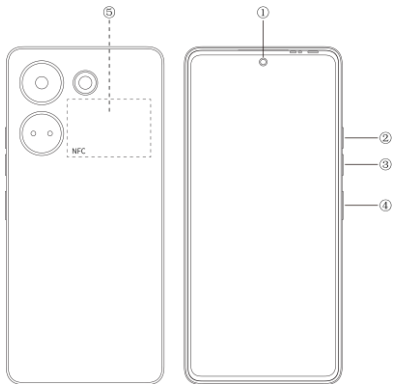
# Explosion diagram specification



1	FHD AMOLED	2	MAIN FRAME MYLAR
3	FRONT CAMERA FRAME	4	R CAM FRAME
5	FRONT ASSAY ASM	6	HOMEMADE PCBA MB
7	CAM FF 32M	8	REC PAD SBS GR
9	CAM AF 64M	10	R CAM PARCEL CON FOIL
11	FRONT CAM FILM	12	FP LMP FOAM
13	MAIN WATERPROOF FRAME	14	MC SCREW 25
15	SHIELD COP FOIL	16	MACHINE SCREW 35
17	NFC FILL FOAM	18	RAD FILM MI HOUSING
19	GB-COV ASM PREDAWN	20	CAM LENS RCAM 64M
21	CAM LENS RCAM 8W	22	SIM CARD HOLDER
23	SPEAKER HEAT FILM	24	BOX SPK
25	MID FRAME ASSAY	26	AUDIO JACK RUBBER
27	BAT BL	28	USB RUBBER
29	RUBBER LT SENSOR	30	USB FILM
31	RAD FILM MAIN	32	BAT MYLAR
33	COA CABLE	34	CAM FF 2M
35	FPCA SIDEKEY	36	CAM FF 8W

37	FPCA MAIN	38	RAD FILM LCM
39	HOMEMADE PCBA SUB	40	HEAT CON COPPER
41	REAR FLASH	42	ERM FPC
43	FP LINK FPC		

# Know your phone



1. Front camera
2. Volume + key
3. Volume - key
4. Power key
5. NFC

# SIM/SD card installation

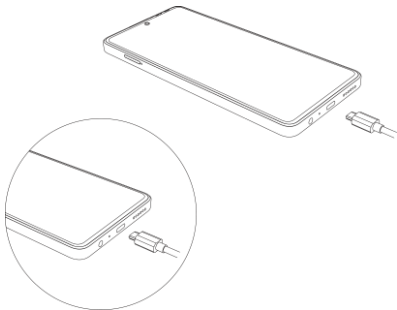
1. Power off mobile.
2. Refer to the following picture for SIM / SD card installation.



# Charging the phone

You can charge your device using a charger or by connecting it to the computer using a USB cable (comes with the phone).

Use only TECNO charger and cables. Other chargers or cables may damage the device. This will invalidate your phone warranty.



# FCC Caution

## **Labelling requirements.**

This device complies with Part 15 of the FCC Rules. Operation is subject to the following two conditions:

- (1) This device may not cause harmful interference.
- (2) This device must accept any interference received, including interference that may cause undesired operation.

## **Information to user.**

Any changes or modifications not expressly approved by the party responsible for compliance could void the user's authority to operate the equipment.

## **Information to the user.**

Note: This equipment has been tested and found to comply with the limits for a Class B digital device, pursuant to part 15 of the FCC Rules. These limits are designed to provide reasonable protection against harmful interference in a residential installation. This equipment generates uses and can radiate radio frequency energy and, if not installed and used in accordance with the instructions, may cause harmful interference to radio communications. However, there is no guarantee that interference will not occur in a particular installation. If this equipment does cause harmful interference to radio or television reception, which can be determined by turning the equipment off and on, the user is encouraged to try to correct the interference by one or more of the following measures:

- Reorient or relocate the receiving antenna.
- Increase the separation between the equipment and receiver.
- Connect the equipment into an outlet on a circuit different from that to which the receiver is connected.
- Consult the dealer or an experienced radio/TV technician for help.

## **Specific Absorption Rate (SAR) information:**

This mobile phone meets the government's requirements for

exposure to radio waves. The guidelines are based on standards that were developed by independent scientific organizations through periodic and thorough evaluation of scientific studies. The standards include a substantial safety margin designed to assure the safety of all persons regardless of age or health.

FCC RF Exposure Information and Statement The SAR limit of USA (FCC) is 1.6 W/kg averaged over one gram of tissue. Device types: CK6ns(FCC ID:2ADYY-CK6NS) has also been tested against this SAR limit. The highest SAR value reported under this standard during product certification for use at the ear is 1.29W/kg and when properly worn on the body is 1.11W/kg.

### **Body-worn Operation**

This device was tested for typical body-worn operations. To comply with RF exposure requirements, a minimum separation distance of 1.0 cm must be maintained between the user's body and the handset, including the antenna. Third-party belt-clips, holsters, and similar accessories used by this device should not contain any metallic components. Body-worn accessories that do not meet these requirements may not comply with RF exposure requirements and should be avoided. Use only the supplied or an approved antenna.



**TECNO**

HiOS runs on Android™ OS.  
Android is a trademark of Google LLC.