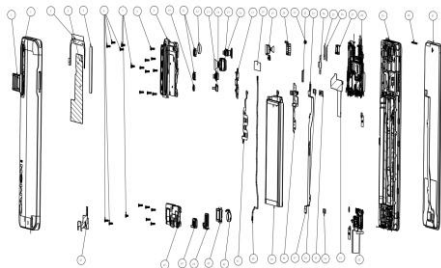


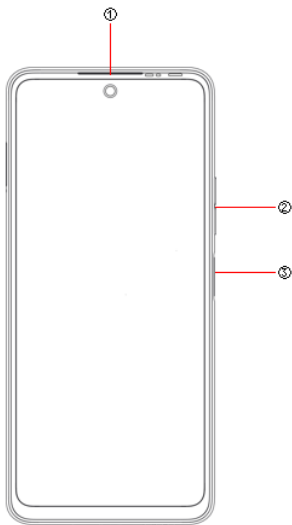
Explosion diagram specification



1	Card Holder asm CG7 Magnet Black	2	Bat cover asm CG7 Magnet Black
3	R hsg Seal Mylar 19.71*7.94 CG7	4	UP Frame Radiating fin 60.5 *58.51 CG7
5	RCAM LensCG7KN3 41.56 *10.36*0.5DarChrome	6	mc screw M1.4*L3.0*D2.5 *H0.5 black glue
7	mc screw M1.4*L2.0*D3.0 *H0.5 silver glue	8	machine screw M1.4*L3.5* D2.5*H0.5 black
9	R hsg asm CG7 Magnet Black	10	R CAM Rubber QVGA CG7 Black
11	R CAM Rubber 2M X693 Black	12	F CAM Rubber 16M CG7 Black
13	CAM FF 2M GC02M1B YM P 3P+IR B SJ V1.0	14	CAM FF 8W GC6153 B P 1P B 10P XCG V1.0
15	CAM FF 2M GC02M1 A P 3P+IR B LHYX V1.0	16	CAM AF 64M OV64B A A 6PBG B 30P ST V1.0
17	R CAM Frame CG7	18	Shield Radiating Cop foil 30.6*8 X693

19	CAM FF 16M S5K3P9SP04 A B 5P B TS V1.0	20	F CAM frame asm 16M CG7
21	Distance Sensor Rubber X693 Black	22	CAM BTB Waterproof Rubber 5.95*4.05 CG7
23	R CAM BTBWaterproof Rubber 8W5.9*3.92CG7	24	R CAM Con Foam 64M 15.43*13.11 CG7
25	F CAM Con fb 12.01*5 CG7	26	REC Con fb 3.5*12.02 CG7
27	REC 0809W H20 shrapnel 50mW 123dB Goer	28	PCBA MB H697 A1 128GB +6GB V1.0
29	F hsg asm CG7 Black	30	REC Deco part asm CG7 Black
31	FL(CTP+LCM) 6.78FHD+ H CG7 Black TM V1.0	32	PCBA SUB H697 1 A V1.0
33	MAIN Radiating Film 37*55.6 CG7	34	SUB PCB CONN Rubber 9.65*3.7 CG7 Black
35	Bat CONN Rubber 15.66*4.18 X693 Black	36	LCM CONN Rubber 11*3.7 CG7 Black
37	FPC MAIN CG7	38	FPC Side Key CG7
39	Bat TECNO BL 49GT 4900mAh ATL IN	40	coaxial cable KTA S 145 CG7 RoHS
41	FM(GSL6157) 0821 Black finger chip	42	Motor COIN 0827 L12 H JX
43	SPK 1115 SPR H2.5 1.0W HS	44	Aj Rubber CG7 Black
45	USB Rubber CG7 Black	46	DOWN SPK frame asm CG7
47	SPK Frame Seal Mylar 22.62*48.59 CG7		

Know your phone

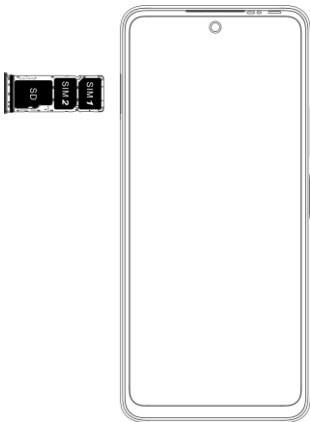


1. Front camera
2. Volume key
3. Power key

SIM/SD card installation

1. Power off mobile.

2. Refer to the following picture for SIM / SD card installation.

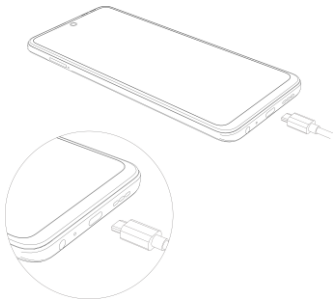


Charging the phone

You can charge your device using a charger or by connecting it

to the computer using a USB cable (comes with the phone).

1. Please remind the front and back of the plug.
2. Use only TECNO charger and cables. Other chargers or cables may damage the device. This will invalidate your phone warranty.



FCC Statement

1. This device complies with Part 15 of the FCC Rules. Operation is subject to the following two conditions:

- (1) This device may not cause harmful interference.

(2) This device must accept any interference received, including interference that may cause undesired operation.

2.Changes or modifications not expressly approved by the party responsible for compliance could void the user's authority to operate the equipment.

NOTE:

This equipment has been tested and found to comply with the limits for a Class B digital device, pursuant to Part 15 of the FCC Rules. These limits are designed to provide reasonable protection against harmful interference in a residential installation.

This equipment generates uses and can radiate radio frequency energy and, if not installed and used in accordance with the instructions, may cause harmful interference to radio communications. However, there is no guarantee that interference will not occur in a particular installation. If this equipment does cause harmful interference to radio or television reception, which can be determined by turning the equipment off and on, the user is encouraged to try to correct the interference by one or more of the following measures:

Reorient or relocate the receiving antenna.

Increase the separation between the equipment and receiver.´

Connect the equipment into an outlet on a circuit different from that to which the receiver is connected.

Consult the dealer or an experienced radio/TV technician for help.

SAR Information Statement

Your wireless phone is a radio transmitter and receiver. It is designed and manufactured not to exceed the emission limits for exposure to radiofrequency (RF) energy set by the Federal Communications Commission of the U.S. Government. These limits are part of comprehensive guidelines and establish permitted levels of RF energy for the general population. The guidelines are based on standards that were developed by independent scientific organizations through periodic and thorough evaluation of scientific studies. The standards include a

substantial safety margin designed to assure the safety of all persons, regardless of age and health. The exposure standard for wireless mobile phones employs a unit of measurement known as the Specific Absorption Rate, or SAR. The SAR limit set by the FCC is 1.6 W/kg. * Tests for SAR are conducted with the phone transmitting at its highest certified power level in all tested frequency bands. Although the SAR is determined at the highest certified power level, the actual SAR level of the phone while operating can be well below the maximum value. This is because the phone is designed to operate at multiple power levels so as to use only the power required to reach the network. In general, the closer you are to a wireless base station antenna, the lower the power output. Before a phone model is available for sale to the public, it must be tested and certified to the FCC that it does not exceed the limit established by the government adopted requirement for safe exposure. The tests are performed in positions and locations (e.g., at the ear and worn on the body) as required by the FCC for each model. The highest SAR value for this model phone when tested for use at the ear is **1.171W/Kg** and when worn on the body, as described in this user guide, is **0.381W/Kg**(Body-worn measurements differ among phone models, depending upon available accessories and FCC requirements). The maximum scaled SAR in hotspot mode is **0.533W/Kg**. While there may be differences between the SAR levels of various phones and at various positions, they all meet the government requirement for safe exposure. The FCC has granted an Equipment Authorization for this model phone with all reported SAR levels evaluated as in compliance with the FCC RFexposure guidelines. SAR information on this model phone is on file with the FCC and can be found under the Display Grant section of <http://www.fcc.gov/oet/fccid> after searching on

FCC ID: **2ADYY-CG7** Additional information on Specific Absorption Rates (SAR) can be found on the Cellular Telecommunications Industry Association (CTIA) web-site at <http://www.wow-com.com>. * In the United States and Canada, the SAR limit for mobile phones used by the public is 1.6 watts/kg (W/kg) averaged over one gram of tissue. The standard incorporates a substantial margin of safety to give additional protection for the public and to account for any variations in measurements.

Body-worn Operation

This device was tested for typical body-worn operations. To comply with RF exposure requirements, a minimum separation distance

of 10mm must be maintained between the user's body and the handset, including the antenna. Third-party belt-clips, holsters,

and similar accessories used by this device should not contain any metallic components. Body-worn accessories that do not meet these requirements may not comply with RF exposure requirements and should be avoided. Use only the supplied or an approved

TECNO

HiOS is based on Android™

Android is a trademark of Google LLC.