

**Emergency call**

If any emergency arises, dial 112/911 (or other emergency call number) for emergency help.

Due to the nature of cellular networking, the success of emergency call is not guaranteed.

**FCC Warning:**

This device complies with part 15 of the FCC Rules. Operation is subject to the following two conditions: (1) This device may not cause harmful interference, and (2) this device must accept any interference received, including interference that may cause undesired operation.

Any Changes or modifications not expressly approved by the party responsible for compliance could void the user's authority to operate the equipment.

This equipment has been tested and found to comply with the limits for a Class B digital device, pursuant to part 15 of the FCC Rules. These limits are designed to provide reasonable protection against harmful interference in a residential installation. This equipment generates uses and can radiate radio frequency energy and, if not installed and used in accordance with the instructions, may cause harmful interference to radio communications. However, there is no guarantee that interference will not occur in a particular installation. If this equipment does cause harmful interference to radio or television reception, which can be determined by turning the equipment off and on, the user is encouraged to try to correct the interference by one or more of the following measures:

- Reorient or relocate the receiving antenna.
- Increase the separation between the equipment and receiver.
- Connect the equipment into an outlet on a circuit different from that to which the receiver is connected.
- Consult the dealer or an experienced radio/TV technician for help.

The SAR limit of USA (FCC) is 1.6 W/kg averaged over one gram of tissue. Device types CD6 (FCC ID: 2ADYY-CD6) has also been tested against this SAR limit. The highest reported SAR values for head, body-worn accessory, and product specific (Hotspot) are 0.98 W/kg, 0.63 W/kg, and 0.63 W/kg respectively. The Max simultaneous SAR is 1.21W/kg. This device was tested for typical body-worn operations with the back of the handset kept 10mm from the body. To maintain compliance with FCC RF exposure requirements, use accessories that maintain a 10mm separation distance between the user's body and the back of the handset. The use of belt clips, holsters and similar accessories should not contain metallic components in its assembly. The use of accessories that do not satisfy these requirements may not comply with FCC RF exposure requirements, and should be avoided.

# **User Manual**

## **Mobile Phone**

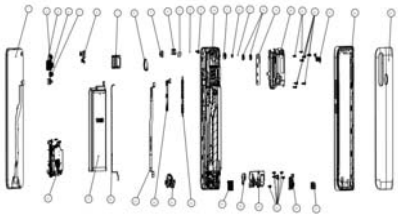
### **CD6**

### **TECNO**

TECNO MOBILE LIMITED

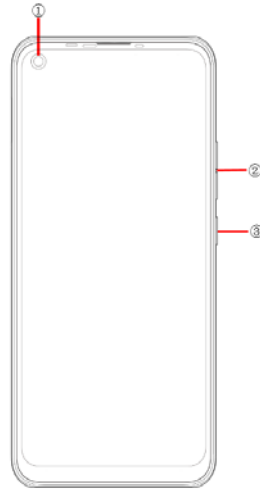
ROOM 604 6/F SOUTH TOWER WORLD, FINANCE  
CTR HARBOUR CITY 17 CANTON ROAD TST KL,  
Hong Kong

Explosion diagram specification



1	FL(CTP+LCM) 6.55HD+ CD7 black TM V1.0	2	Cam FF 2M GC2375H A P 3P+IR B SJ V1.0
3	Cam AF 48M OV48R2Q B A 6P B ST V1.0	4	Cam FF 2M GC2375H A P 3P+IR B LHYX V1.0
5	Cam FF 8W GC6153 CSP W6003 XCG V1.0	6	Cam FF 8W GC8034 X627 TXD V2.0
7	SIM cards holder asm CD6	8	FM
9	F CAM rubber CD6 8M Black	10	REC 1206W H20 broadband H-SPL 50mW AC
11	FPC REC CD6	12	LT sensor light guide CD7
13	Distance Sensor Rubber CD7 Black	14	F hsg a sm CD6 black
15	R vice CAM rubber CD6 8W Black	16	FP Con foams CD6
17	F flash Lens CD7	18	R vice CAM rubber CD6 2M Black
19	R CAM lens CD6 KN3 0.5 Black	20	UP frame asm CD6 Black
21	mc screw M1.4*L2.5*D2.5*H0.5 silver	22	mc screw M1.4*L3.5*D2.5*H0.5 black
23	FP imp steel CD6	24	Rear cover CD6
25	Bat cover CD6	26	MAIN PCB H6211 J1 64GB+3GB V1.1
27	Bat TECHNO BL 49FT 4900mAh LW IN	28	Coaxial cable CD6
29	FPC MAIN CD6	30	FPC Side key CD6
31	SUB PCBA H627 1 E V1.0	32	Side key CD6
33	SPK 1115 SPR H2.5 RoHS HS	34	Motor FPC 0827 L4.8 H AWA with Con ads
35	SPK frame a sm CD6 _Black	36	Earphone rubber CD6 Black
37	USB rubber CD6 Black		

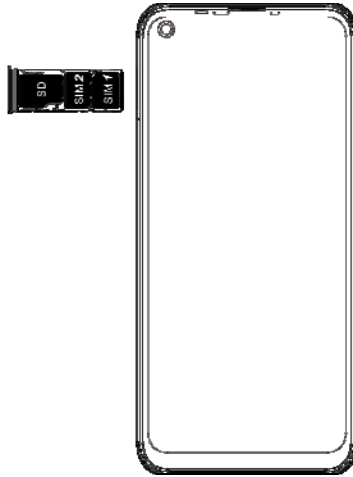
## Know your phone



1. Front camera
2. Volume key
3. Return key

## SIM/SD card installation

1. Power off mobile.
2. Refer to the following picture for SIM / SD card installation.



## Charging the phone

You can charge your device using a charger or by connecting it to the computer using a USB cable (comes with the phone).

1. Please remind the front and back of the plug.
2. Use only TECNO charger and cables. Other chargers or cables may damage the device. This will invalidate your phone warranty.

