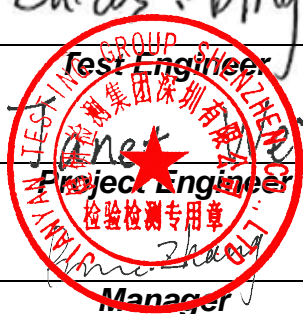


# FCC EMC Test Report

**Applicant:** TECNO MOBILE LIMITED  
**Address of Applicant:** FLAT N 16/F BLOCK B UNIVERSAL INDUSTRIAL CENTRE  
19-25 SHAN MEI STREET FOTAN NT HONGKONG  
**Equipment Under Test (EUT)**  
Product Name: Mobile Phone  
Model No.: BF7  
Trade Mark: TECNO  
**FCC ID:** 2ADYY-BF7  
**Applicable Standards:** FCC CFR Title 47 Part 15B  
**Date of Sample Receipt:** 12 May, 2023  
**Date of Test:** 13 May, to 31 May, 2023  
**Date of report Issued:** 02 Jun, 2023  
**Test Result:** PASS

**Tested by:** Lucas Ding **Date:** 02 Jun, 2023  
**Reviewed by:** Alex Zhang **Date:** 02 Jun, 2023  
**Approved by:** Manager **Date:** 02 Jun, 2023



This equipment has been shown to be capable of compliance with the applicable technical standards as indicated in the measurement report and was tested in accordance with the measurement procedures specified in above the application standard version. Test results reported herein relate only to the item(s) tested.

This document cannot be reproduced except in full, without prior written approval of the Company. Any unauthorized alteration, forgery or falsification of the content or appearance of this document is unlawful and offenders may be prosecuted to the fullest extent of the law. Unless otherwise stated the results shown in this test report refer only to the sample(s) tested and such sample(s) are retained for 90 days only.

## 1 Version

Version No.	Date	Description
00	02 Jun, 2023	Original

## 2 Contents

Page

Cover Page .....	1
<b>1 Version .....</b>	<b>2</b>
<b>2 Contents.....</b>	<b>3</b>
<b>3 General Information.....</b>	<b>4</b>
3.1 Client Information .....	4
3.2 General Description of E.U.T. ....	4
3.3 Test Mode .....	4
3.4 Description of Test Auxiliary Equipment .....	5
3.5 Description of Cable Used.....	5
3.6 Measurement Uncertainty .....	5
3.7 Additions to, Deviations, or Exclusions from the Method.....	5
3.8 Laboratory Facility .....	5
3.9 Laboratory Location.....	5
3.10 Test Instruments List .....	6
<b>4 Measurement Setup and Procedure .....</b>	<b>7</b>
4.1 Test Setup .....	7
4.2 Test Procedure .....	9
<b>5 Test Results.....</b>	<b>10</b>
5.1 Summary .....	10
5.1.1 Clause and data summary .....	10
5.1.2 Test Limit.....	10
5.2 Conducted Emission .....	11
5.3 Radiated Emission .....	13

### 3 General Information

#### 3.1 Client Information

Applicant:	TECNO MOBILE LIMITED
Address:	FLAT N 16/F BLOCK B UNIVERSAL INDUSTRIAL CENTRE 19-25 SHAN MEI STREET FOTAN NT HONGKONG
Manufacturer:	TECNO MOBILE LIMITED
Address:	FLAT N 16/F BLOCK B UNIVERSAL INDUSTRIAL CENTRE 19-25 SHAN MEI STREET FOTAN NT HONGKONG
Factory:	SHENZHEN TECNO TECHNOLOGY CO., LTD.
Address:	101, Building 24, Waijing Industrial Park, Fumin Community, Fucheng Street, Longhua District, Shenzhen City, P.R.China

#### 3.2 General Description of E.U.T.

Product Name:	Mobile Phone
Model No.:	BF7
Power Supply:	Rechargeable Li-ion Polymer Battery DC3.85V, 4900mAh
AC Adapter:	Model: U100TSA Input: AC100-240V, 50/60Hz, 0.3A Output: DC 5.0V, 2.0A
Test Sample Condition:	The test samples were provided in good working order with no visible defects.

#### 3.3 Test Mode

Operating Mode	Detail Description
PC mode	Keep the EUT in Downloading mode(Worst case)
Charging+Recording mode	Keep the EUT in Charging+Recording mode
Charging+Playing mode	Keep the EUT in Charging+Playing mode
FM mode	Keep the EUT in FM receiver mode
GPS mode	Keep the EUT in GPS receiver mode

The sample was placed 0.8m above the ground plane of 3m chamber. Measurements in both horizontal and vertical polarities were performed. During the test, each emission was maximized by: having the EUT continuously working, investigated all operating modes, rotated about all 3 axis (X, Y & Z) and considered typical configuration to obtain worst position, manipulating interconnecting cables, rotating the turntable, varying antenna height from 1m to 4m in both horizontal and vertical polarizations. The emissions worst-case are shown in Test Results of the following pages.

### 3.4 Description of Test Auxiliary Equipment

Manufacturer	Description	Model	S/N	FCC ID/DoC
Lenovo	Laptop	ThinkPad T14 Gen 1	SL10Z47277	DoC
HP	Printer	HP LaserJet P1007	VNFP409729	DoC

### 3.5 Description of Cable Used

Cable Type	Description	Length	From	To
Detached USB Cable	Shielding	0.98m	EUT	PC/Adapter
Detached headset cable	Unshielded	1.2m	EUT	Headset

### 3.6 Measurement Uncertainty

Parameter	Expanded Uncertainty (Confidence of 95%(U = 2Uc(y)))
Conducted Emission for LISN (9kHz ~ 10MHz)	1.9 dB
Conducted Emission for LISN (10MHz ~ 30MHz)	2.6 dB
Radiated Emission (30MHz ~ 1GHz) (3m SAC)	3.8 dB
Radiated Emission (1GHz ~ 18GHz) (3m SAC)	3.6 dB

**Note:** All the measurement uncertainty value were shown with a coverage  $k=2$  to indicate 95% level of confidence. The measurement data show herein meets or exceeds the CISPR measurement uncertainty values specified in CISPR 16-4-2 and can be compared directly to specified limit to determine compliance.

### 3.7 Additions to, Deviations, or Exclusions from the Method

No
----

### 3.8 Laboratory Facility

The test facility is recognized, certified, or accredited by the following organizations:

- **FCC - Designation No.: CN1211**

JianYan Testing Group Shenzhen Co., Ltd. has been accredited as a testing laboratory by FCC(Federal Communications Commission). The test firm Registration No. is 727551.

- **ISED – CAB identifier.: CN0021**

The 3m Semi-anechoic chamber and 10m Semi-anechoic chamber of JianYan Testing Group Shenzhen Co., Ltd. has been Registered by Certification and Engineering Bureau of Industry Canada for radio equipment testing with Registration No.: 10106A-1.

- **CNAS - Registration No.: CNAS L15527**

JianYan Testing Group Shenzhen Co., Ltd. is accredited to ISO/IEC 17025:2017 General Requirements for the Competence of Testing and Calibration laboratories for the competence of testing. The Registration No. is CNAS L15527.

- **A2LA - Registration No.: 4346.01**

This laboratory is accredited in accordance with the recognized International Standard ISO/IEC 17025:2017 General requirements for the competence of testing and calibration laboratories. The test scope can be found as below link: <https://portal.a2la.org/scopepdf/4346-01.pdf>

### 3.9 Laboratory Location

JianYan Testing Group Shenzhen Co., Ltd.

Address: No.101, Building 8, Innovation Wisdom Port, No.155 Hongtian Road, Huangpu Community, Xinqiao Street, Bao'an District, Shenzhen, Guangdong, People's Republic of China.

Tel: +86-755-23118282, Fax: +86-755-23116366

Email: info-JYTee@lets.com, Website: <http://jyt.lets.com>

### 3.10 Test Instruments List

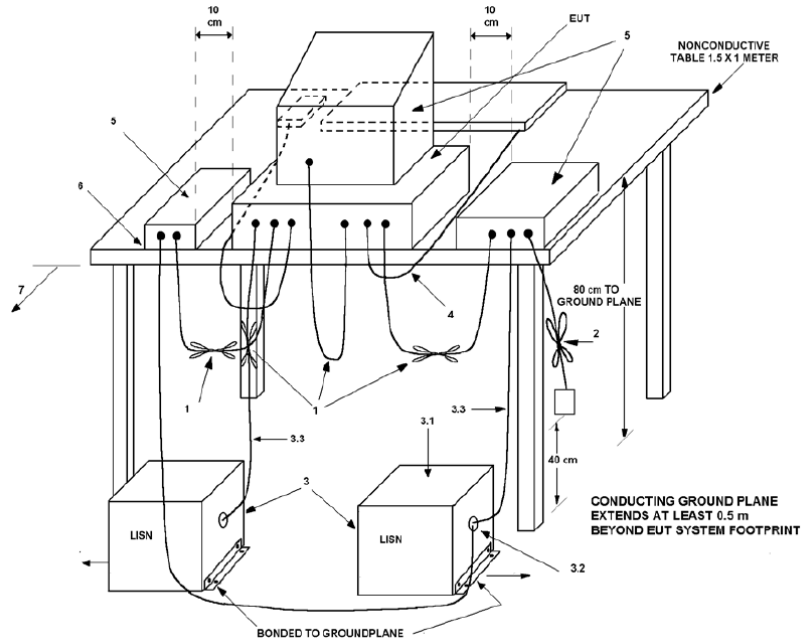
Radiated Emission(3m SAC):					
Test Equipment	Manufacturer	Model No.	Manage No.	Cal. Date (mm-dd-yy)	Cal. Due date (mm-dd-yy)
3m SAC	ETS	9m*6m*6m	WXJ001-1	04-14-2021	04-13-2024
BiConiLog Antenna	Schwarzbeck	VULB9163	WXJ002	02-09-2023	02-08-2024
Horn Antenna	Schwarzbeck	BBHA9120D	WXJ002-2	02-09-2023	02-08-2024
Pre-amplifier (30MHz ~ 1GHz)	Schwarzbeck	BBV9743B	WXJ001-2	01-10-2023	01-09-2024
Pre-amplifier (1GHz ~ 18GHz)	SKET	LNPA_0118G-50	WXJ001-3	01-10-2023	01-09-2024
EMI Test Receiver	Rohde & Schwarz	ESRP7	WXJ003-1	01-11-2023	01-10-2024
Spectrum Analyzer	Rohde & Schwarz	FSP 30	WXJ004	01-10-2023	01-09-2024
Coaxial Cable (30MHz ~ 1GHz)	JYTSZ	JYT3M-1G-NN-8M	WXG001-4	01-18-2023	01-17-2024
Coaxial Cable (1GHz ~ 18GHz)	JYTSZ	JYT3M-18G-NN-8M	WXG001-5	01-18-2023	01-17-2024
Band Reject Filter Group	Tonscend	JS0806-F	WXJ089	N/A	
Test Software	Tonscend	TS+	Version: 3.0.0.1		

Conducted Emission:					
Test Equipment	Manufacturer	Model No.	Manage No.	Cal. Date (mm-dd-yy)	Cal. Due date (mm-dd-yy)
EMI Test Receiver	Rohde & Schwarz	ESR3	WXJ003-2	07-12-2022	07-11-2023
LISN	Schwarzbeck	NSLK 8127	QCJ001-13	01-10-2023	01-09-2024
LISN	Rohde & Schwarz	ESH3-Z5	WXJ005-1	01-11-2023	01-10-2024
LISN Coaxial Cable (9kHz ~ 30MHz)	JYTSZ	JYTCE-1G-NN-2M	WXG003-1	01-18-2023	01-17-2024
RF Switch	TOP PRECISION	RSU0301	WXG003	N/A	
Test Software	AUDIX	E3	Version: 6.110919b		

## 4 Measurement Setup and Procedure

### 4.1 Test Setup

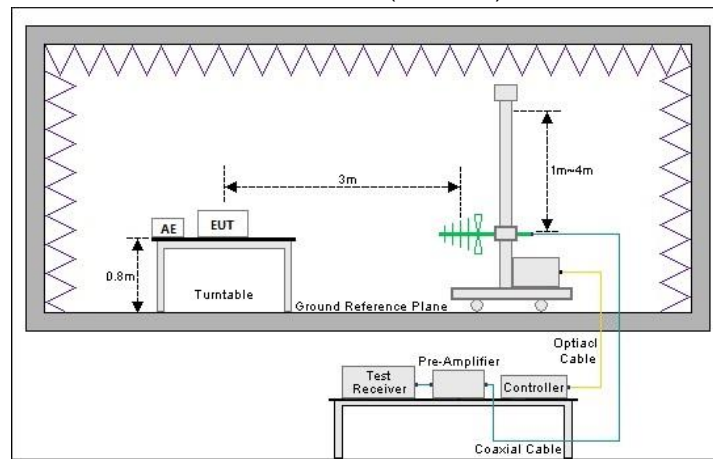
#### 1) Conducted emission measurement:

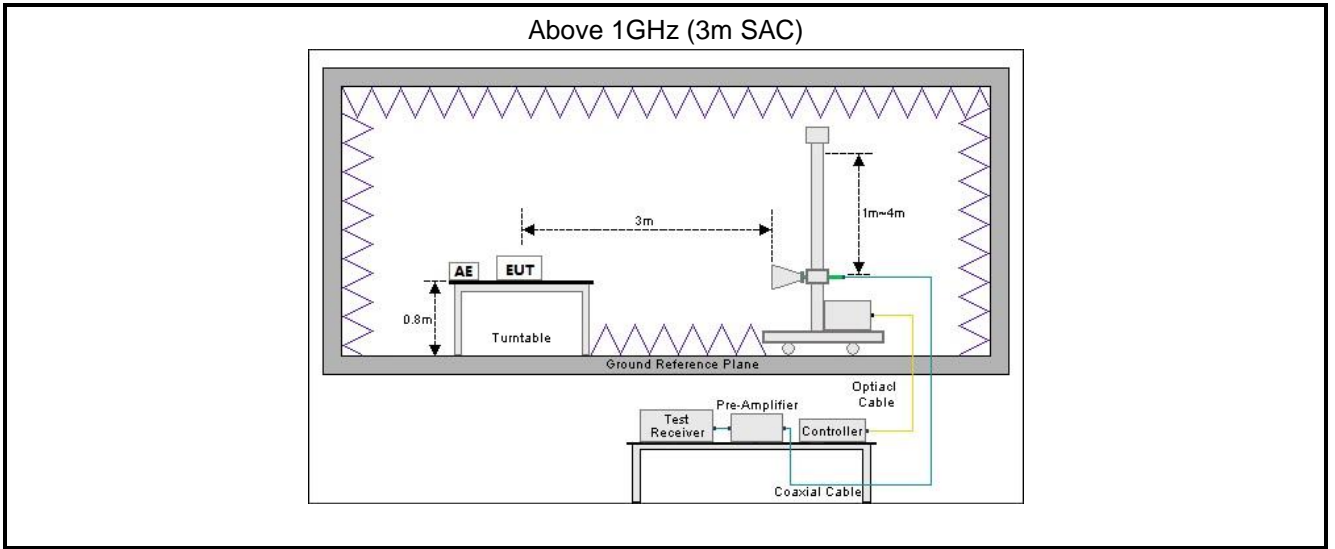


**Note:** The detailed descriptions please refer to Figure 8 of ANSI C63.4:2014.

#### 2) Radiated emission measurement:

Below 1GHz (3m SAC)







## 4.2 Test Procedure

Test method	Test step
Conducted emission	<ol style="list-style-type: none"> <li>1. The E.U.T and simulators are connected to the main power through a line impedance stabilization network (L.I.S.N.). This provides a 50ohm/50uH coupling impedance for the measuring equipment.</li> <li>2. The peripheral devices are also connected to the main power through a LISN that provides a 50ohm/50uH coupling impedance with 50ohm termination. (Please refer to the block diagram of the test setup and photographs).</li> <li>3. Both sides of A.C. line are checked for maximum conducted interference. In order to find the maximum emission, the relative positions of equipment and all of the interface cables must be changed according to ANSI C63.4 on conducted measurement.</li> </ol>
Radiated emission	<p><b>For below 1GHz:</b></p> <ol style="list-style-type: none"> <li>1. The EUT was placed on the tabletop of a rotating table 0.8 m the ground at a 3 m semi anechoic chamber. The measurement distance from the EUT to the receiving antenna is 3 m.</li> <li>2. EUT works in each mode of operation that needs to be tested, and having the EUT continuously working, respectively on 3 axis (X, Y &amp; Z) and considered typical configuration to obtain worst position. The highest signal levels relative to the limit shall be determined by rotating the EUT from 0° to 360° and with varying the measurement antenna height between 1 m and 4 m in vertical and horizontal polarizations.</li> <li>3. Open the test software to control the test antenna and test turntable. Perform the test, save the test results, and export the test data.</li> </ol> <p><b>For above 1GHz:</b></p> <ol style="list-style-type: none"> <li>1. The EUT was placed on the tabletop of a rotating table 0.8 m the ground at a 3 m fully anechoic room. The measurement distance from the EUT to the receiving antenna is 3 m.</li> <li>2. EUT works in each mode of operation that needs to be tested, and having the EUT continuously working, respectively on 3 axis (X, Y &amp; Z) and considered typical configuration to obtain worst position. The highest signal levels relative to the limit shall be determined by rotating the EUT from 0° to 360° and with varying the measurement antenna height between 1 m and 4 m in vertical and horizontal polarizations.</li> <li>3. Open the test software to control the test antenna and test turntable. Perform the test, save the test results, and export the test data.</li> </ol>

## 5 Test Results

### 5.1 Summary

#### 5.1.1 Clause and data summary

This report was amended on FCC ID: 2ADYY-BF7 follow FCC Class II Permissive Change. The original report: JYTSZ-R01-2200541, issued by JianYan Testing Group Shenzhen Co., Ltd. The differences between them as below: Replace the memory chip and change LTE B7 and BT and 2.4GWi-Fi duplexer supplier. So retest the EMC.

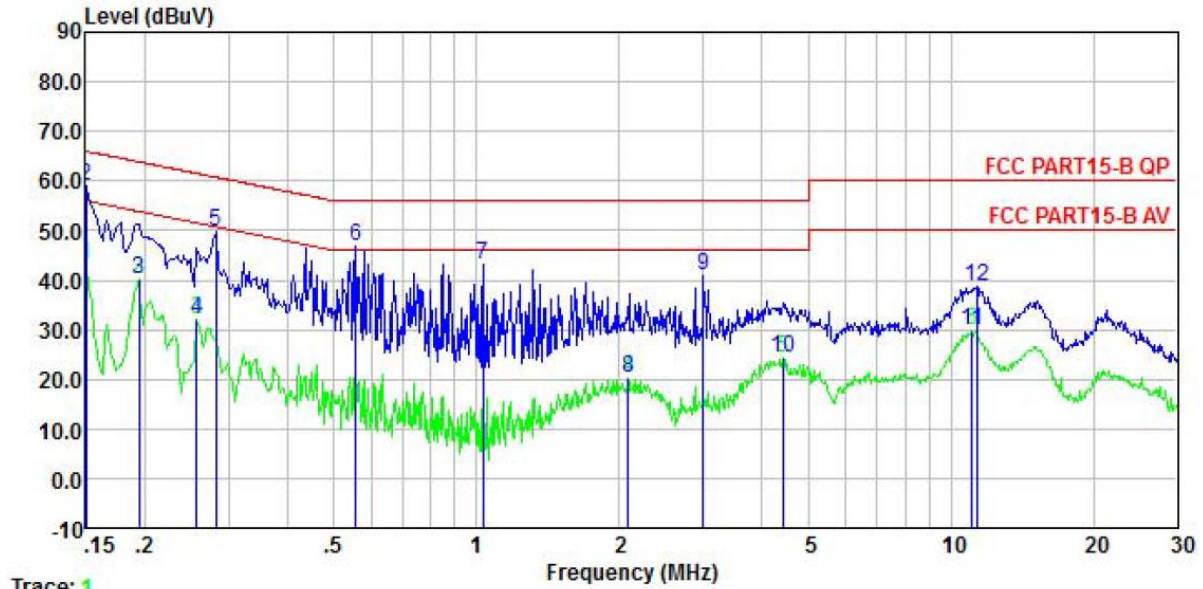
Test items	Standard clause	Test data	Result
Conducted Emission	Part 15.107	See Section 5.2	Pass
Radiated Emission	Part 15.109	See Section 5.3	Pass
<b>Remark:</b> 1. The EUT is a <b>Class B</b> digital device. 2. Pass: The EUT complies with the essential requirements in the standard. 3. N/A: Not Applicable.			
<b>Test Method:</b>	ANSI C63.4:2014		

#### 5.1.2 Test Limit

Test items	Limit				
Conducted Emission	Frequency (MHz)	Class A Limit (dB $\mu$ V)		Class B Limit (dB $\mu$ V)	
		Quasi-Peak	Average	Quasi-Peak	Average
	0.15 – 0.5	79	66	66 to 56 <small>Note 1</small>	56 to 46 <small>Note 1</small>
	0.5 – 5	73	60	56	46
	5 – 30	73	60	60	50
<b>Note 1:</b> The limit level in dB $\mu$ V decreases linearly with the logarithm of frequency. <b>Note 2:</b> The more stringent limit applies at transition frequencies.					
Radiated Emission	Frequency (MHz)	Class A Limit (dB $\mu$ V/m)		Class B Limit (dB $\mu$ V/m)	
		Quasi-Peak @ 3m	Quasi-Peak @ 10m	Quasi-Peak @ 3m	Quasi-Peak @ 10m
	30 – 88	49.0	39.0	40.0	30.0
	88 – 216	53.5	43.5	43.5	33.5
	216 – 960	56.0	46.0	46.0	36.0
	960 – 1000	60.0	50.0	54.0	44.0
	<b>Note:</b> The more stringent limit applies at transition frequencies.				
Frequency	Class A Limit (dB $\mu$ V/m) @ 3m		Class B Limit (dB $\mu$ V/m) @ 3m		
	Average	Peake	Average	Peake	
Above 1 GHz	60.0	80.0	54.0	74.0	
<b>Note:</b> The measurement bandwidth shall be 1 MHz or greater.					

### 5.2 Conducted Emission

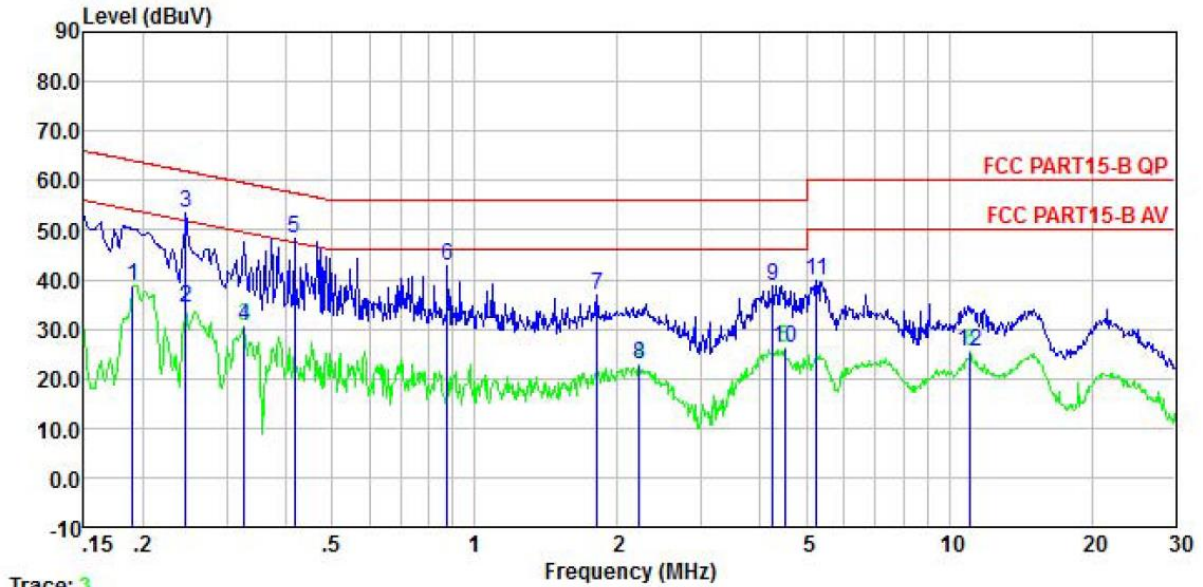
Product name:	Mobile Phone	Product model:	BF7
Test by:	Lucas	Test mode:	PC mode
Test frequency:	150 kHz ~ 30 MHz	Phase:	Line
Test voltage:	AC 120 V/60 Hz		



	Read	LISN	Aux2	Cable	Limit	Over		
Freq	Level	Factor	Factor	Loss	Line	Limit	Remark	
MHz	dBuV	dB	dB	dB	dBuV	dBuV	dB	
1	0.150	32.70	0.04	10.50	0.01	43.25	56.00	-12.75 Average
2	0.150	48.51	0.04	10.50	0.01	59.06	66.00	-6.94 QP
3	0.194	29.42	0.05	10.50	0.03	40.00	53.84	-13.84 Average
4	0.258	21.46	0.06	10.50	0.01	32.03	51.51	-19.48 Average
5	0.282	39.15	0.06	10.50	0.02	49.73	60.76	-11.03 QP
6	0.555	36.21	0.06	10.50	0.02	46.79	56.00	-9.21 QP
7	1.032	32.47	0.07	10.50	0.06	43.10	56.00	-12.90 QP
8	2.088	9.50	0.08	10.50	0.20	20.28	46.00	-25.72 Average
9	3.009	30.40	0.09	10.50	0.07	41.06	56.00	-14.94 QP
10	4.430	13.74	0.11	10.50	0.08	24.43	46.00	-21.57 Average
11	11.080	18.99	0.24	10.50	0.11	29.84	50.00	-20.16 Average
12	11.317	27.97	0.24	10.50	0.11	38.82	60.00	-21.18 QP

**Remark:**  
 1. Level = Read level + LISN Factor + Cable Loss.

<b>Product name:</b>	Mobile Phone	<b>Product model:</b>	BF7
<b>Test by:</b>	Lucas	<b>Test mode:</b>	PC mode
<b>Test frequency:</b>	150 kHz ~ 30 MHz	<b>Phase:</b>	Neutral
<b>Test voltage:</b>	AC 120 V/60 Hz		



Trace: 3

	Read	LISN	Aux2	Cable	Limit	Over		
Freq	Level	Factor	Factor	Loss	Line	Limit	Remark	
MHz	dBuV	dB	dB	dB	dBuV	dB		
1	0.190	28.23	0.05	10.50	0.03	38.81	54.02	-15.21 Average
2	0.246	23.89	0.05	10.50	0.01	34.45	51.91	-17.46 Average
3	0.246	42.76	0.05	10.50	0.01	53.32	61.91	-8.59 QP
4	0.327	20.06	0.05	10.50	0.02	30.63	49.53	-18.90 Average
5	0.417	37.80	0.04	10.50	0.04	48.38	57.51	-9.13 QP
6	0.876	32.34	0.06	10.50	0.04	42.94	56.00	-13.06 QP
7	1.810	26.04	0.07	10.50	0.19	36.80	56.00	-19.20 QP
8	2.225	12.11	0.08	10.50	0.17	22.86	46.00	-23.14 Average
9	4.247	28.11	0.10	10.50	0.08	38.79	56.00	-17.21 QP
10	4.501	15.40	0.11	10.50	0.09	26.10	46.00	-19.90 Average
11	5.249	28.95	0.12	10.50	0.09	39.66	60.00	-20.34 QP
12	11.080	14.44	0.22	10.50	0.11	25.27	50.00	-24.73 Average

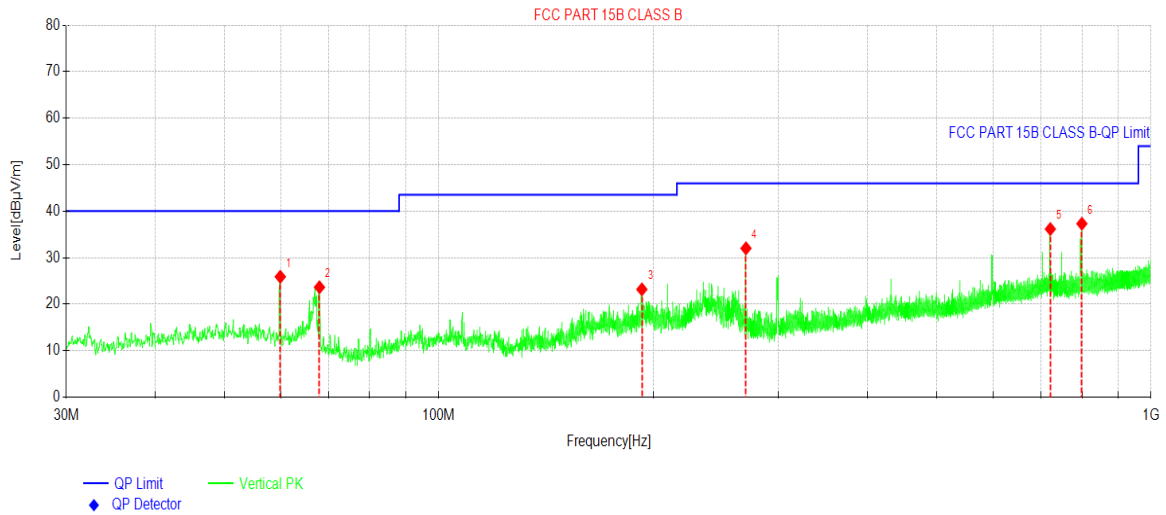
**Remark:**

1. Level = Read level + LISN Factor + Cable Loss.

### 5.3 Radiated Emission

Below 1GHz:

<b>Product Name:</b>	Mobile Phone	<b>Product Model:</b>	BF7
<b>Test By:</b>	Lucas	<b>Test mode:</b>	PC mode
<b>Test Frequency:</b>	30 MHz ~ 1 GHz	<b>Polarization:</b>	Vertical
<b>Test Voltage:</b>	AC 120V/60Hz		

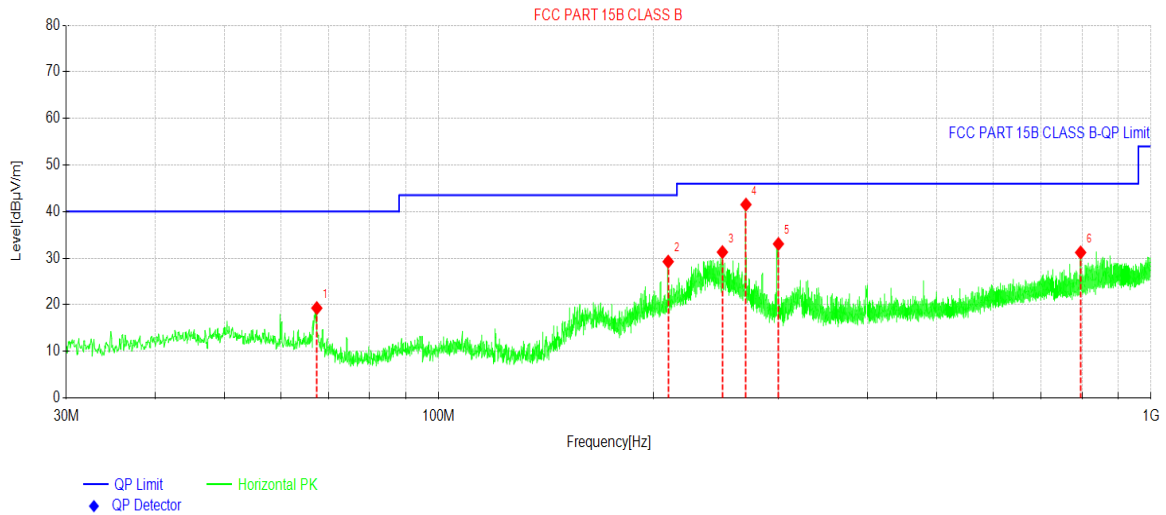


Suspected Data List								
NO.	Freq. [MHz]	Reading [dBµV/m]	Level [dBµV/m]	Factor [dB]	Limit [dBµV/m]	Margin [dB]	Trace	Polarity
1	59.9245	40.19	25.89	-14.30	40.00	14.11	PK	Vertical
2	68.0240	39.82	23.63	-16.19	40.00	16.37	PK	Vertical
3	192.863	38.38	23.18	-15.20	43.50	20.32	PK	Vertical
4	270.026	45.38	32.00	-13.38	46.00	14.00	PK	Vertical
5	722.289	40.76	36.15	-4.61	46.00	9.85	PK	Vertical
6	799.792	41.00	37.30	-3.70	46.00	8.70	PK	Vertical

**Remark:**

1. Level = Reading + Factor(Antenna Factor + Cable Loss – Preamplifier Factor).

<b>Product Name:</b>	Mobile Phone	<b>Product Model:</b>	BF7
<b>Test By:</b>	Lucas	<b>Test mode:</b>	PC mode
<b>Test Frequency:</b>	30 MHz ~ 1 GHz	<b>Polarization:</b>	Horizontal
<b>Test Voltage:</b>	AC 120V/60Hz		



**Suspected Data List**

NO.	Freq. [MHz]	Reading[dBµV/m]	Level [dBµV/m]	Factor [dB]	Limit [dBµV/m]	Margin [dB]	Trace	Polarity
1	67.4420	35.19	19.28	-15.91	40.00	20.72	PK	Horizontal
2	210.032	44.26	29.25	-15.01	43.50	14.25	PK	Horizontal
3	250.238	44.78	31.29	-13.49	46.00	14.71	PK	Horizontal
4	270.026	54.88	41.50	-13.38	46.00	4.50	PK	Horizontal
5	299.902	45.97	33.06	-12.91	46.00	12.94	PK	Horizontal
6	796.591	34.89	31.21	-3.68	46.00	14.79	PK	Horizontal

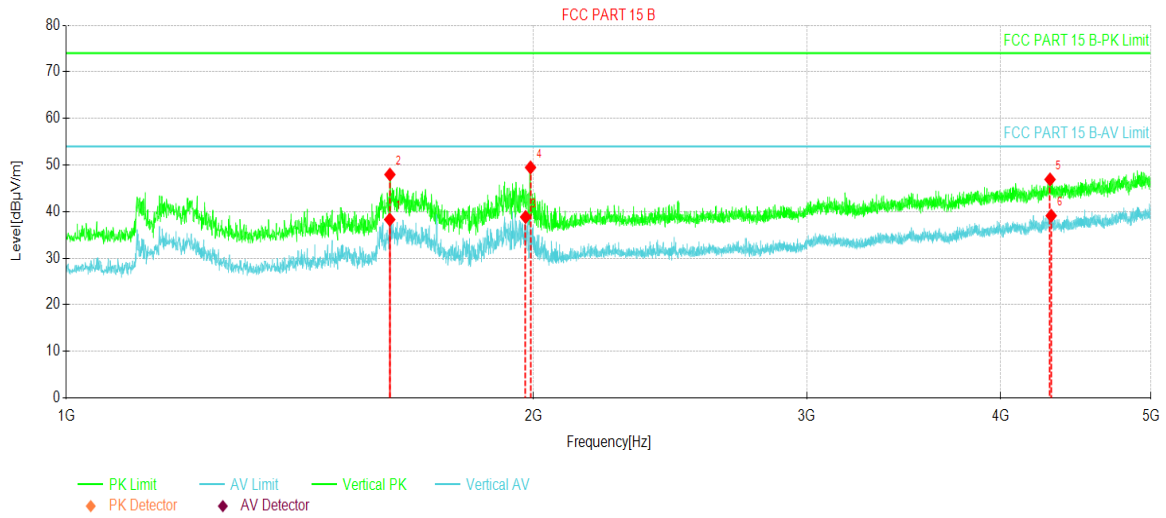
**Remark:**

1. Level = Reading + Factor(Antenna Factor + Cable Loss – Preamplifier Factor).



**Above 1GHz:**

<b>Product Name:</b>	Mobile Phone	<b>Product Model:</b>	BF7
<b>Test By:</b>	Lucas	<b>Test mode:</b>	PC mode
<b>Test Frequency:</b>	1000 MHz ~ 6000 MHz	<b>Polarization:</b>	Vertical
<b>Test Voltage:</b>	AC 120V/60Hz		

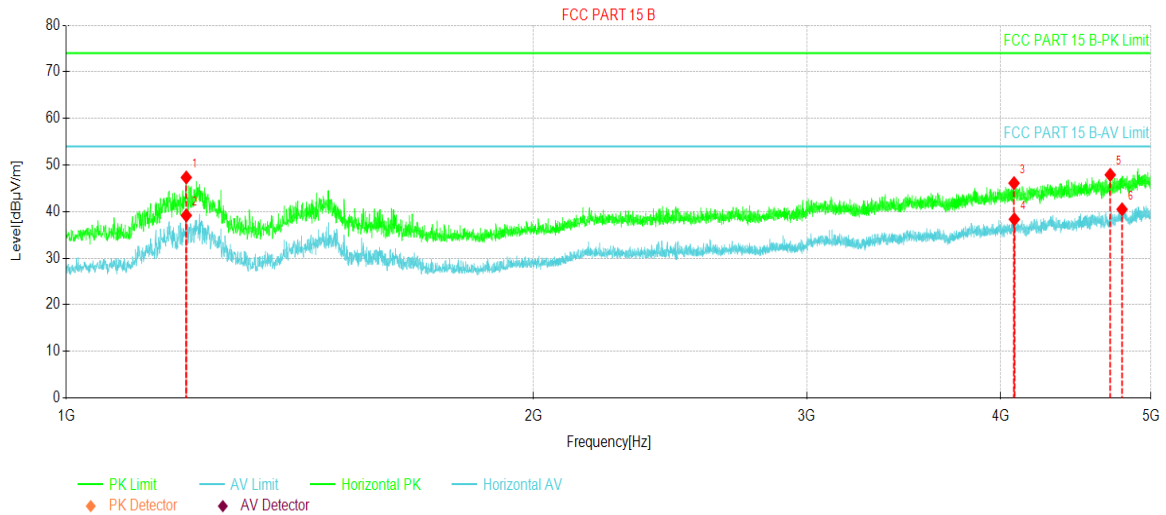


Suspected Data List								
NO.	Freq. [MHz]	Reading [dBµV/m]	Level [dBµV/m]	Factor [dB]	Limit [dBµV/m]	Margin [dB]	Trace	Polarity
1	1616.00	61.30	38.28	-23.02	54.00	15.72	AV	Vertical
2	1616.50	70.97	47.95	-23.02	74.00	26.05	PK	Vertical
3	1977.00	59.51	38.83	-20.68	54.00	15.17	AV	Vertical
4	1991.50	70.06	49.47	-20.59	74.00	24.53	PK	Vertical
5	4304.50	57.90	46.89	-11.01	74.00	27.11	PK	Vertical
6	4312.00	50.17	39.10	-11.07	54.00	14.90	AV	Vertical

**Remark:**

1. Level = Reading + Factor(Antenna Factor + Cable Loss – Preamplifier Factor).

<b>Product Name:</b>	Mobile Phone	<b>Product Model:</b>	BF7
<b>Test By:</b>	Lucas	<b>Test mode:</b>	PC mode
<b>Test Frequency:</b>	1000 MHz ~ 6000 MHz	<b>Polarization:</b>	Horizontal
<b>Test Voltage:</b>	AC 120V/60Hz		



**Suspected Data List**

NO.	Freq. [MHz]	Reading [dBµV/m]	Level [dBµV/m]	Factor [dB]	Limit [dBµV/m]	Margin [dB]	Trace	Polarity
1	1195.00	71.01	47.32	-23.69	74.00	26.68	PK	Horizontal
2	1195.00	62.86	39.17	-23.69	54.00	14.83	AV	Horizontal
3	4080.50	58.32	46.10	-12.22	74.00	27.90	PK	Horizontal
4	4082.50	50.56	38.34	-12.22	54.00	15.66	AV	Horizontal
5	4706.50	57.74	47.89	-9.85	74.00	26.11	PK	Horizontal
6	4790.00	49.68	40.48	-9.20	54.00	13.52	AV	Horizontal

**Remark:**

1. Level = Reading + Factor(Antenna Factor + Cable Loss – Preamplifier Factor).

-----End of report-----