

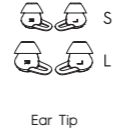
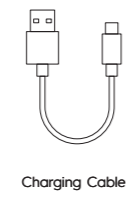
TECNO

Wireless Earphone
User Manual Model: B2

Heretby, TECNO MOBILE LIMITED,
Declares that this Wireless Earphone is in compliance with the essential
requirements and other relevant provisions of directive 2014/53/EU.

PACKAGE CONTENT

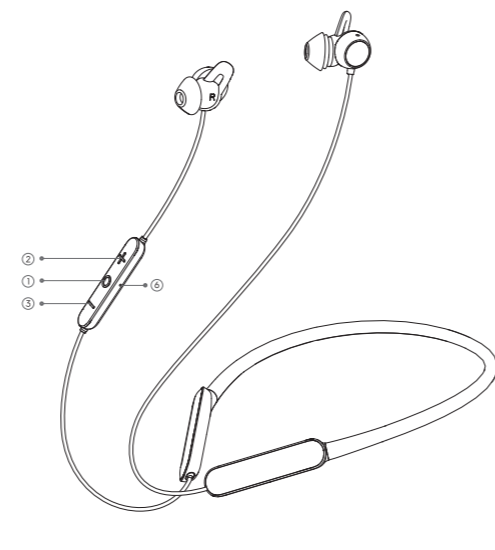
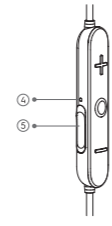
- 1 Wireless Earphone
- 1 Charging cable
- 1 User Manual
- 2 Large ear tip
- 2 Medium ear tip (fitted on the earphone)
- 2 Small ear tip



--1--

PRODUCT OVERVIEW

- 1 MFB
- 2 V+
- 3 V-
- 4 Indicator light
- 5 Charging port
- 6 Microphone



--2--

CONTROLS AND FUNCTIONS

Power on

- When the magnetic flap cover is opened (that effect sensor).

Power off

- When the magnetic flap cover is closed (that effect sensor).

Volume adjustment

- In the music play mode or calling mode, the volume increases when the volume+ button is tapped and decreases when the volume- button is tapped.

Track selection

- Long press the volume+ button for 2s to play the next track; long press the volume- button for 2s to play the previous track.

Pause/Play

- In the case the music play mode, you can tap the multifunction button to pause the play, and tap it again to resume play.

Answer/End calls

- Tap the multifunction button to answer/end a call.

Reject calls

- Double-tap the multifunction button to reject a call.

Voice assistant

- Tap the multifunction button 3 times in the connected status (if supported by the connected Bluetooth device).

Restore factory settings

- Long press the multifunction button for about 10 seconds in the power-on status.

--3--

Re-connect with previously paired devices

- After powered on, the earphone will attempt to automatically reconnect with the previously paired device. If the attempt fails after 10s, the earphone will try pairing with a new device. The earphone will power off after 10 minutes due to timeout if the attempted pairing is not successful.
- Connection with a device out of connecting range will resume when the device is within the connecting range again. The earphone will power off after 10 minutes due to timeout if the attempted pairing is not successful.

Pop-up window

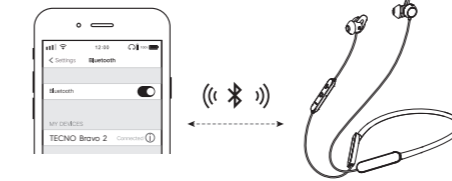
- When this earphone is in the pairing mode, a pop-up window for pairing will appear on a phone when the phone receives the Bluetooth signal from the earphone.

Manual connection

- When two hosts (a phone or a computer) are connecting with this Bluetooth earphone, you can switch between the two hosts manually.

Pairing

- The earphone will start pairing after power-on if it has no pairing history or start pairing if its attempt to re-connect with a previously paired device fails. The earphone will power off after 10 minutes of pairing due to timeout.



--4--

SPECIFICATIONS

Product Name	B2
Charging Cable	Type-C
Earphone Battery Capacity	30mAh
Charging Voltage/Current	5V/225mA
Low power off voltage	3.2V
Music Playing Time (DB)	5H1
Music Playing Time (DB2)	5H1
Standby Time	200H About (no light flashing)
Bluetooth distance	10m
Bluetooth Name	TECNO Btwo 2
Bluetooth Chip	RTL8762B
Bluetooth version	BT5.3
Bluetooth frequency	2.4GHz
Bluetooth code	SBC/AAC
Bluetooth protocols	HFP V1.6.2/BP V1.5/LVWRCP V1.7
Operating temperature	0°C~40°C
Storage Temperature	-20°C~70°C
Earphones charging time	About 2H
Waterproof	IPX5

--5--

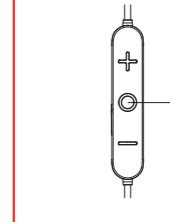
EARPHONE INDICATOR LIGHT

LED indicator	Light effect
Power on	White light of after 1s lightup
Power off	White light of after 1s lightup
Bluetooth pairing	Quick blink (on, off, on) with an interval

Charging enter
regular mode

White light blink every 2s, white light always on after full charging

INCOMING CALL MODE



- Answer a call: Short press MFB
- End a call: Double press MFB
- Reject a call: Double-tap MFB

--6--

TECNO



Bluetooth
FCC ID: 2ADY182
MADE IN CHINA

BUTTON OPERATION

Music mode

- Volume up: musical status press V+
- Next track: Playing status, long press V+ about 2 seconds
- Play/pause: Standby/play status short press MFB
- Previous track: Playing status, long press V- about 2 seconds
- Volume down: musical status press V-

VOICE ASSISTANT

- Voice dialing: Tap the multifunction button 3 times in the connected status (if supported by the connected Bluetooth device).

--7--

FCC Caution:

Any Changes or modifications not expressly approved by the party responsible for compliance could void the user's authority to operate the equipment.
This device complies with part 15 of the FCC Rules. Operation is subject to the following two conditions:
(1) This device may not cause harmful interference, and
(2) This device must accept any interference received, including interference that may cause undesired operation.

IMPORTANT NOTE

Note: This equipment has been tested and found to comply with the limits for a Class B digital device, pursuant to part 15 of the FCC Rules. These limits are designed to provide reasonable protection against harmful interference in a residential installation.
This equipment generates, uses and can radiate radio frequency energy and, if not installed and used in accordance with the instructions may cause harmful interference to radio communications. However, there is no guarantee that interference will not occur in a particular installation.

If the equipment does cause harmful interference to radio or television reception, which can be determined by turning the equipment off and on, the user is encouraged to try to correct the interference by one or more of the following measures:
-Reorient or relocate the receiving antenna.
-Increase the separation between the equipment and receiver.
-Connect the equipment into an outlet on a circuit different from that to which the receiver is connected.
-Consult the dealer or an experienced radio/TV technician for help.

FCC Radiation Exposure Statement:

This equipment complies with FCC radiation exposure limits set forth for an uncontrolled environment.

--8--

CAUTION:

- Risks of explosion if battery is replaced by an incorrect type; dispose of used batteries according to the instructions.
- disposal of a battery into fire or a hot oven, or mechanically crushing or cutting of a battery, that can result in an explosion.
- Inserting a battery in an extremely high temperature surrounding environment that can result in an explosion or the leakage of flammable liquid or gas.
- A battery subjected to extremely low air pressure that may result in an explosion or the leakage of flammable liquid or gas.

2 EU Temperature: 0°C~40°C (Standard)

Frequency Range(RF):

BT/BLE: 2402-2480MHz (TX/RX)

RF output power (only for CE) :

BT: 10dBm
BLE: 4.02dBm

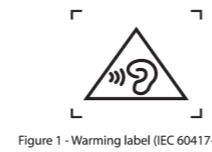


Figure 1: Warning label(EN 60413-0464)

--9--

EU Declaration of Conformity

In accordance with EU Directives and Regulations
Company name: TECNO MOBILE LIMITED
Address: FLAT 7/F, BLOCK B UNIVERSAL INDUSTRIAL CENTRE 9/25 SHAN MEI STREET FOTAN NT HONGKONG
On the manufacturer's behalf, I declare under our sole responsibility that the
Product(s) Wireless Earphone

Model name: B2
is in conformity with the essential requirements of the RE Directive 2014/53/EU.

Radio: ETSI EN 300 328 V2.2.2 (2019-07)

Article 3.2 ENEC EN 300 328 V2.2.2 (2019-07)

EMC: ETSI EN 300 486 V2.3.1 (2019-07)

Article 3.1(b) Draft ETSI EN 300 486 V2.3.1 (2022-06)

Safety: EN IEC 62368-1:2014/A1:2016

Article 3.1(a) EN 62368-1:2014/A1:2016

Health: EN 50363:2017; EN 62479:2010

Article 3.1(c) EN 50363:2017; EN 62479:2010

--10--

An EU Type Examination Certificate for this Product was issued in accordance with Annex II (Module B) of the 2014/53/EU
Radio Equipment Directive by Bay Area Compliance Laboratories Corp. (2014/53/EU Radio Equipment Directive Notified
Body Identification Number: 015)

Signed on behalf of TECNO MOBILE LIMITED

(Signature of authorized person)

Nengqiang Wu

Signature

Signature

Signature

Signature

Signature

Signature

Signature

Signature

Signature

Signature

Signature

Signature

Signature

--11--

180 DAYS WARRANTY

Please refer to your receipt; this warranty covers only original TECNO products. It is not applicable to normal wear and tear, or any effects or damage caused by misuse of the product. Warranty is for primary product only. Additional or free of cost products are not covered under warranty.

TECNO MOBILE LIMITED

The end Copyright ©2022-2023 TECNO Corporation. All rights reserved. Other product and company names mentioned herein may be trademarks or trade names of their respective owners. Specifications are subject to change without notice. Model names and the availability of particular products may vary by region.

www.tecnomobile.com

service@tecnomobile.com

--12--