

12. SAR Test Data

GSM850

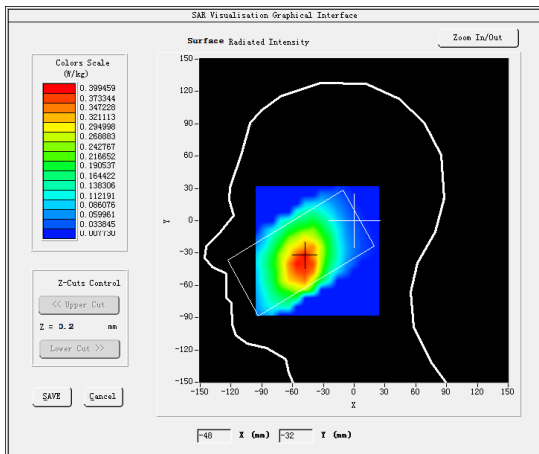
MEASUREMENT 1

Middle Band SAR (Channel 190)

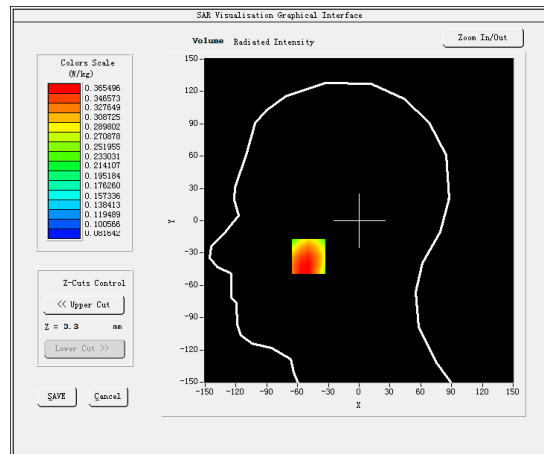
Date: 06/24/2020

Frequency (MHz)	836.600000
Relative permittivity (real part)	41.417760
Relative permittivity (imaginary part)	18.129852
Conductivity (S/m)	0.874923
Variation (%)	1.220000
Crest Factor:	8.3
Probe Conversion factor	5.50
E-Field Probe:	SSE2 (SN 41/18 EP331)
Area Scan	<u>dx=8mm dy=8mm, h= 5.00 mm</u>
ZoomScan	<u>5x5x7, dx=8mm dy=8mm</u> <u>dz=5mm, Complete/ndx=8mm dy=8mm, h=</u> <u>5.00 mm</u>
Phantom	<u>Right head</u>
Device Position	<u>Cheek</u>
Band	<u>GSM850(voice)</u>

SURFACE SAR



VOLUME SAR



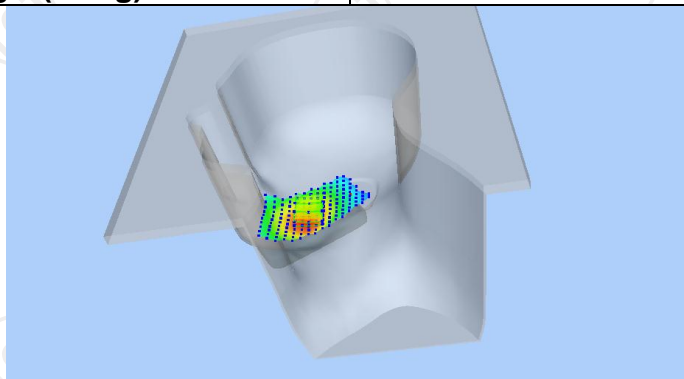
Maximum location: X=-49.00, Y=-33.00 SAR Peak: 0.49 W/kg

SAR 10g (W/Kg)

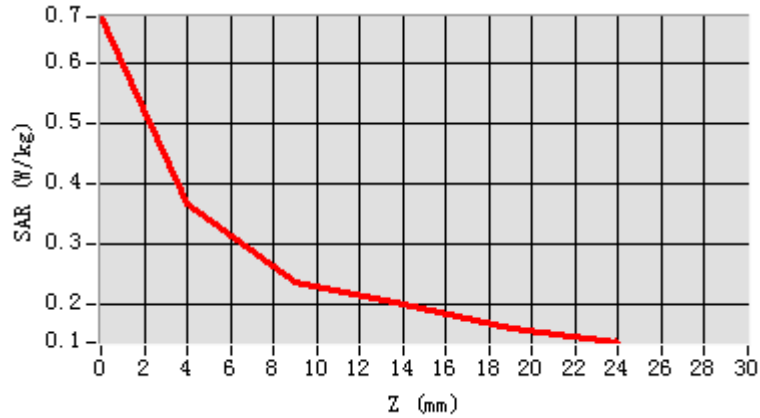
0.272684

SAR 1g (W/Kg)

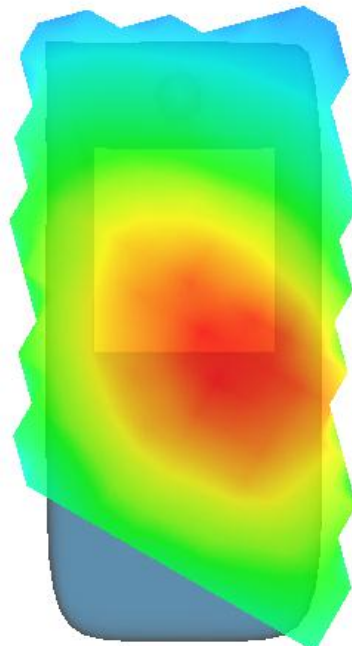
0.360963



Z (mm)	0.00	4.00	9.00	14.00	19.00
SAR (W/Kg)	0.6752	0.3655	0.2359	0.1999	0.1609



Hot spot position



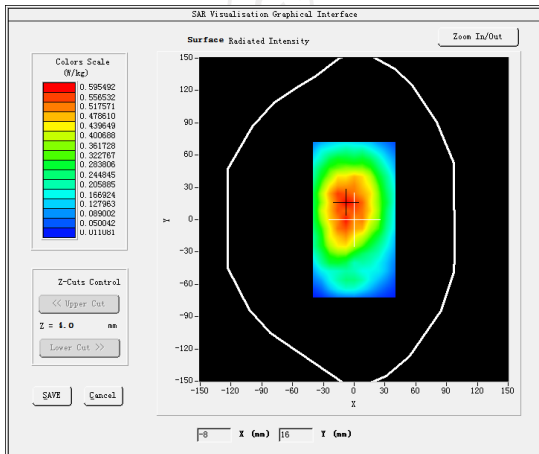
MEASUREMENT 2

Middle Band SAR (Channel 190):

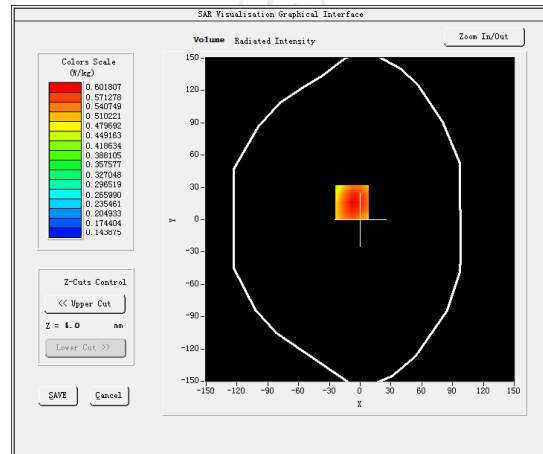
Date: 06/24/2020

Frequency (MHz)	836.600000
Relative permittivity (real part)	55.242077
Relative permittivity (imaginary part)	21.378187
Conductivity (S/m)	0.938883
Variation (%)	-0.110000
Crest Factor:	8.3
Probe Conversion factor	5.65
E-Field Probe:	SSE2 (SN 41/18 EP331)
Area Scan	<u>dx=8mm dy=8mm, h= 5.00 mm</u>
ZoomScan	<u>5x5x7, dx=8mm dy=8mm</u> <u>dz=5mm, Complete/ndx=8mm dy=8mm, h=</u> <u>5.00 mm</u>
Phantom	<u>Validation plane</u>
Device Position	<u>Body back(10mm)</u>
Band	<u>GSM850(Voice)</u>

SURFACE SAR



VOLUME SAR



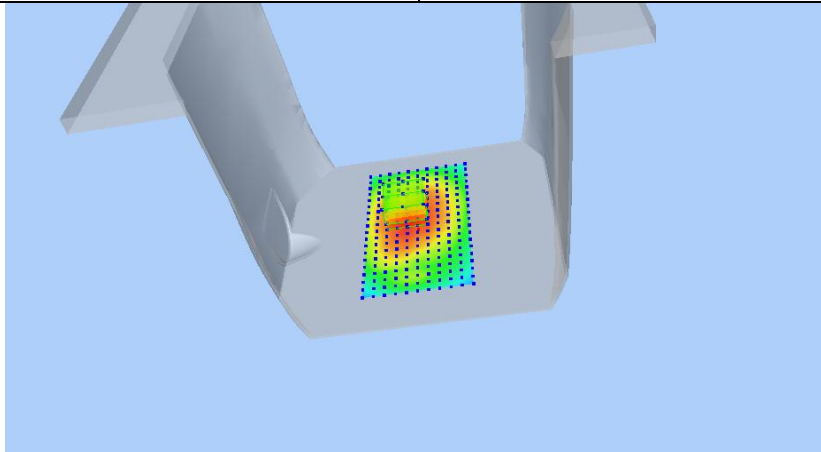
Maximum location: X=-8.00, Y=16.00 SAR Peak: 0.79 W/kg

SAR 10g (W/Kg)

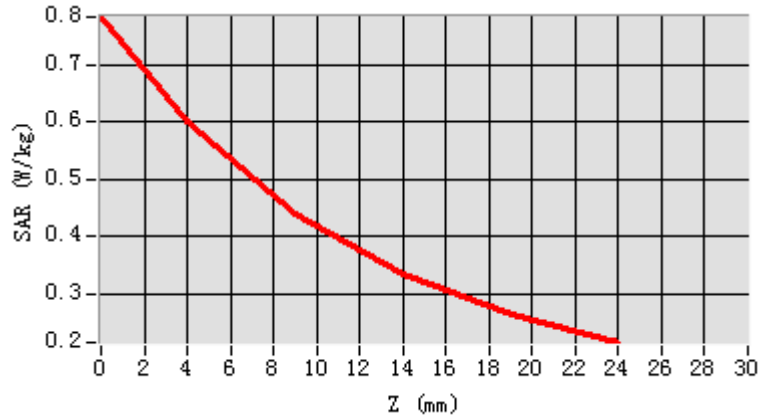
0.423320

SAR 1g (W/Kg)

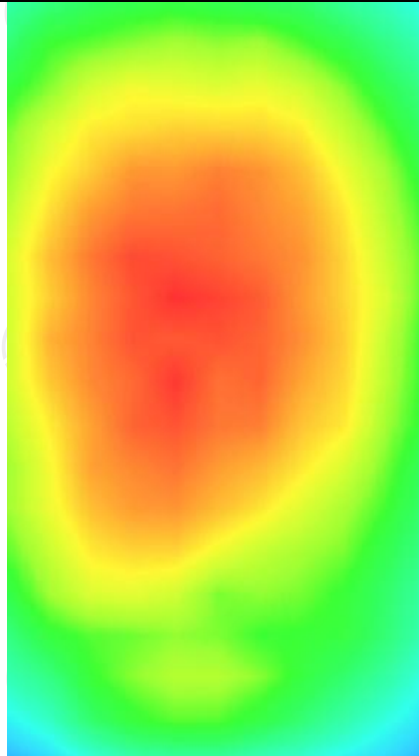
0.582460



Z (mm)	0.00	4.00	9.00	14.00	19.00
SAR (W/Kg)	0.7826	0.6018	0.4396	0.3330	0.2644



Hot spot position



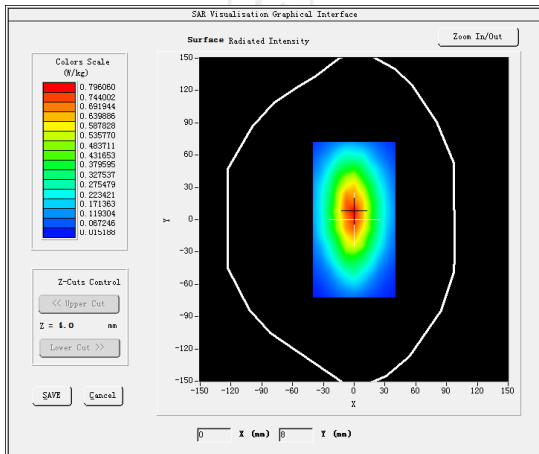
MEASUREMENT 3

Middle Band SAR (Channel 190):

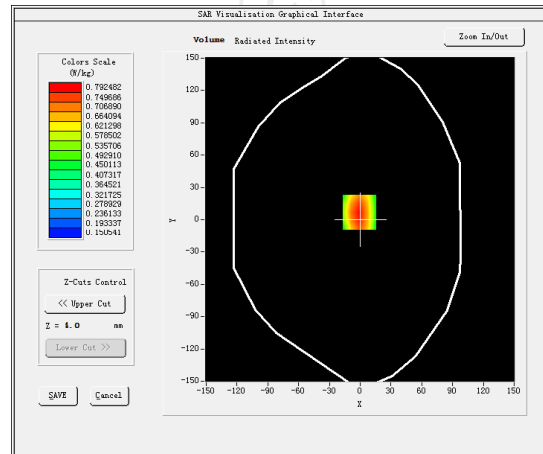
Date: 06/24/2020

Frequency (MHz)	836.600000
Relative permittivity (real part)	55.242077
Relative permittivity (imaginary part)	21.378187
Conductivity (S/m)	0.938883
Variation (%)	-0.270000
Crest Factor:	2.0
Probe Conversion factor	5.65
E-Field Probe:	SSE2 (SN 41/18 EP331)
Area Scan	<u>dx=8mm dy=8mm, h= 5.00 mm</u>
ZoomScan	<u>5x5x7, dx=8mm dy=8mm</u> <u>dz=5mm, Complete/ndx=8mm dy=8mm, h=</u> <u>5.00 mm</u>
Phantom	<u>Validation plane</u>
Device Position	<u>Body back(10mm)</u>
Band	<u>GSM850(GPRS 4slot)</u>

SURFACE SAR



VOLUME SAR



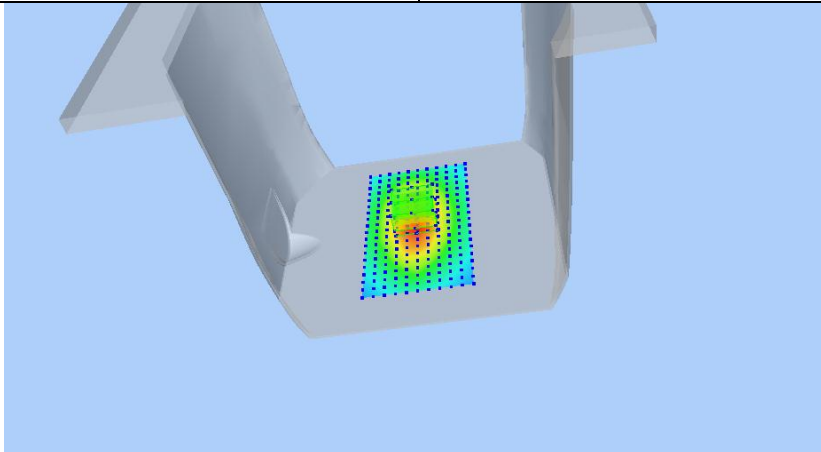
Maximum location: X=-1.00, Y=7.00 SAR Peak: 1.13 W/kg

SAR 10g (W/Kg)

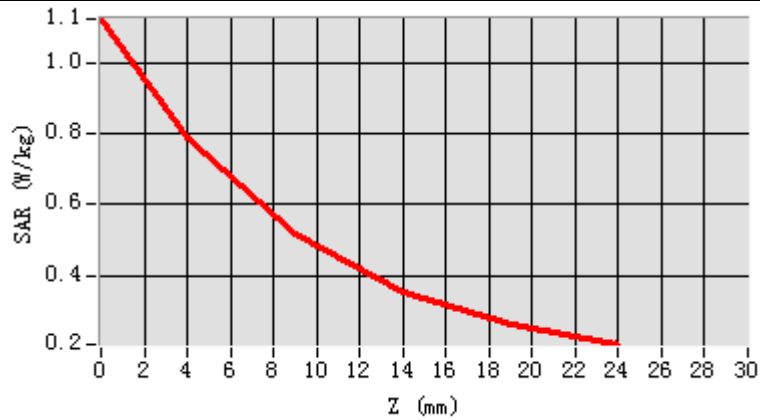
0.495149

SAR 1g (W/Kg)

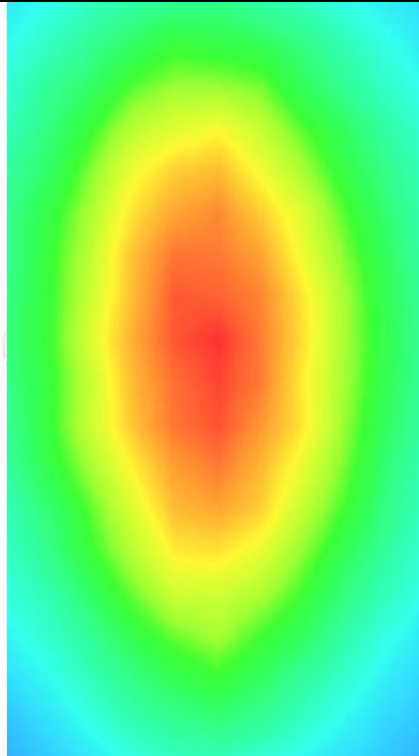
0.752337



Z (mm)	0.00	4.00	9.00	14.00	19.00
SAR (W/Kg)	1.1269	0.7925	0.5161	0.3539	0.2630



Hot spot position



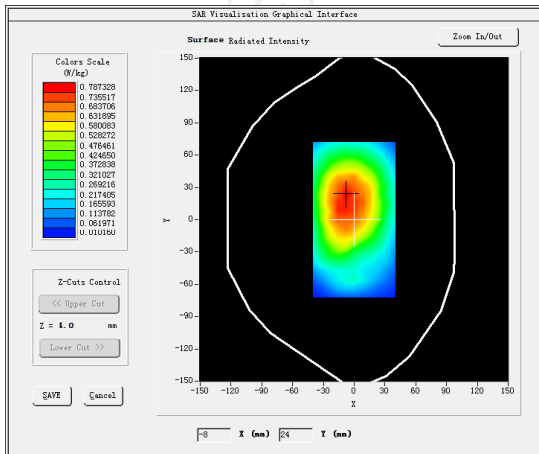
MEASUREMENT 4

Middle Band SAR (Channel 661):

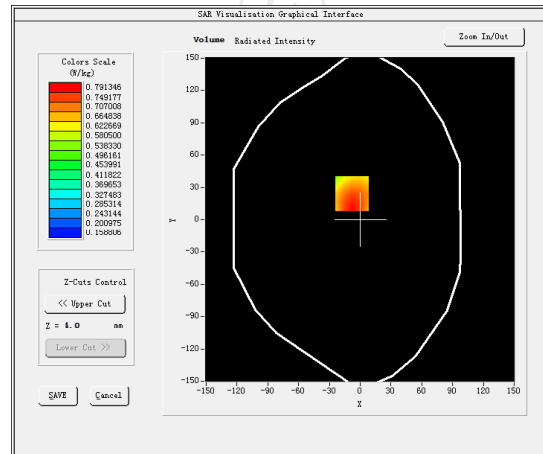
Date: 06/24/2020

Frequency (MHz)	1880.000000
Relative permittivity (real part)	55.242077
Relative permittivity (imaginary part)	21.378187
Conductivity (S/m)	0.938883
Variation (%)	0.910000
Crest Factor:	2.0
Probe Conversion factor	5.65
E-Field Probe:	SSE2 (SN 41/18 EP331)
Area Scan	<u>dx=8mm dy=8mm, h= 5.00 mm</u>
ZoomScan	<u>5x5x7, dx=8mm dy=8mm</u> <u>dz=5mm, Complete/ndx=8mm dy=8mm, h=</u> <u>5.00 mm</u>
Phantom	<u>Validation plane</u>
Device Position	<u>Body back(10mm)</u>
Band	<u>GSM850(GPRS 4slot hotspot)</u>

SURFACE SAR



VOLUME SAR



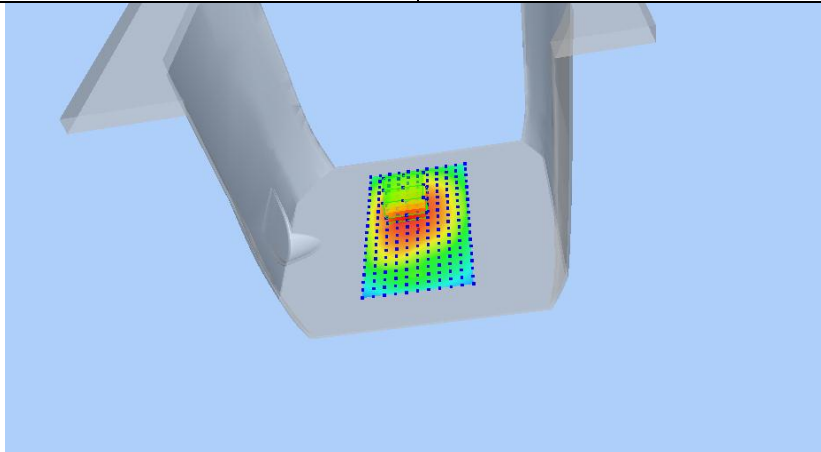
Maximum location: X=-8.00, Y=24.00 SAR Peak: 1.05 W/kg

SAR 10g (W/Kg)

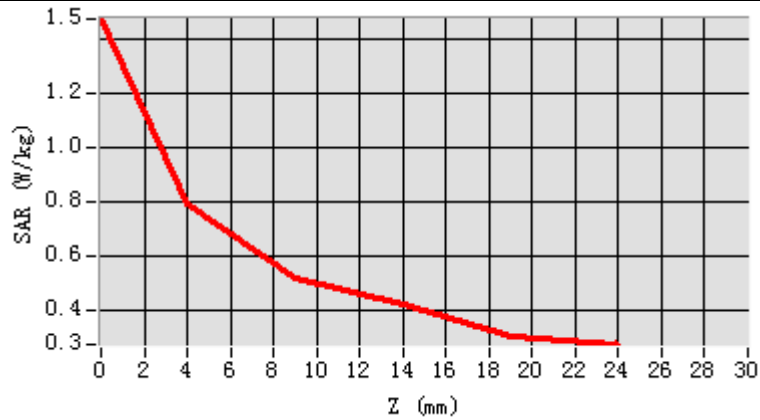
0.557792

SAR 1g (W/Kg)

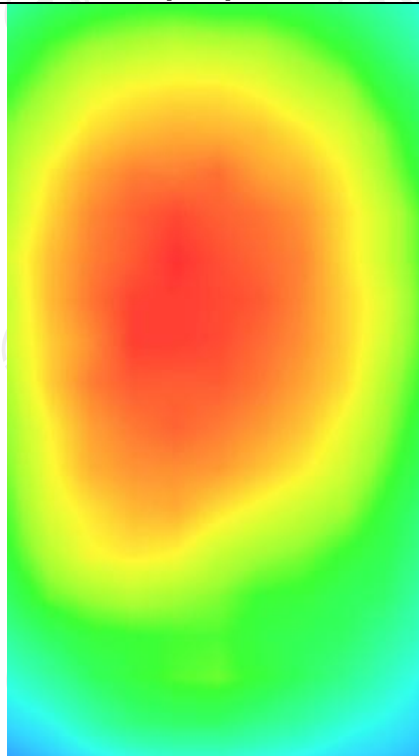
0.750113



Z (mm)	0.00	4.00	9.00	14.00	19.00
SAR (W/Kg)	1.4733	0.7913	0.5157	0.4210	0.3054



Hot spot position



GPRS 1900

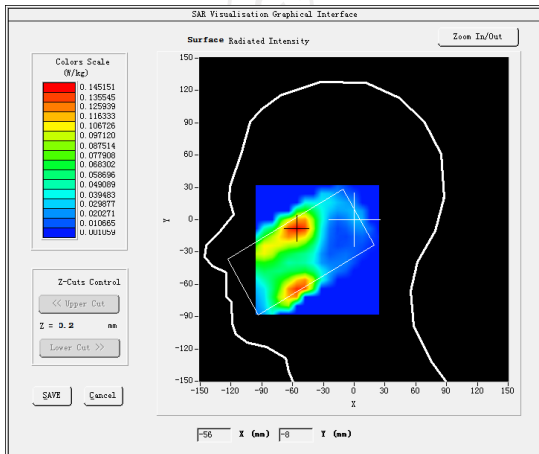
MEASUREMENT 1

Middle Band SAR (Channel 661):

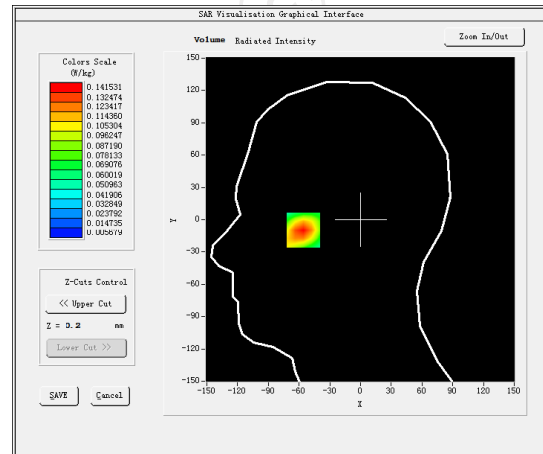
Date: 06/29/2020

Frequency (MHz)	1880.000000
Relative permittivity (real part)	39.070000
Relative permittivity (imaginary part)	14.000000
Conductivity (S/m)	1.38000
Variation (%)	-1.970000
Crest Factor	8.3
Probe Conversion factor	4.85
E-Field Probe:	SSE2 (SN 41/18 EP331)
Area Scan	<u>dx=8mm dy=8mm, h= 5.00 mm</u>
ZoomScan	<u>5x5x7, dx=8mm dy=8mm</u> <u>dz=5mm, Complete/ndx=8mm dy=8mm, h=</u> <u>5.00 mm</u>
Phantom	<u>Right head</u>
Device Position	<u>Cheek</u>
Band	<u>GSM1900(voice)</u>

SURFACE SAR



VOLUME SAR



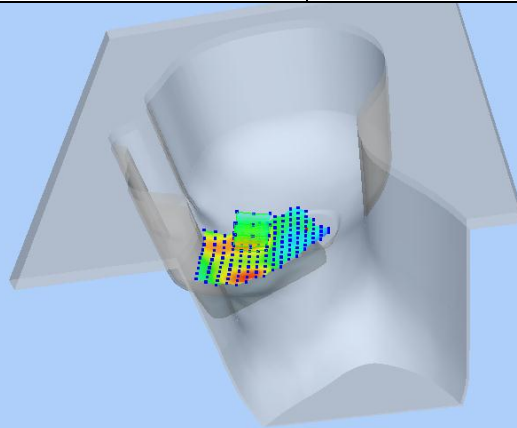
Maximum location: X=-56.00, Y=-8.00 SAR Peak: 0.19 W/kg

SAR 10g (W/Kg)

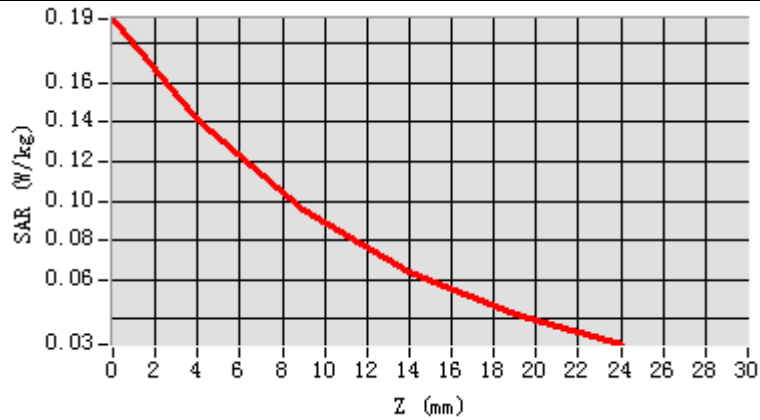
0.080693

SAR 1g (W/Kg)

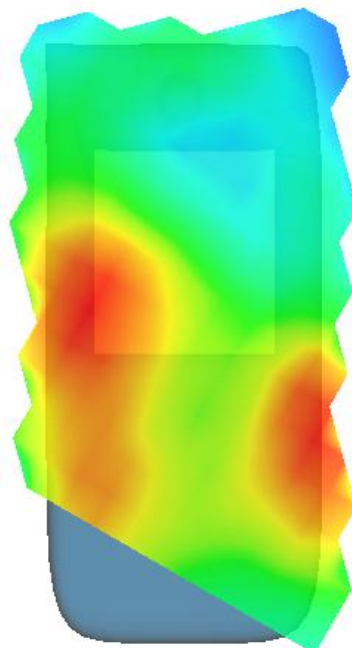
0.132966



Z (mm)	0.00	4.00	9.00	14.00	19.00
SAR (W/Kg)	0.1926	0.1415	0.0951	0.0636	0.0423



Hot spot position



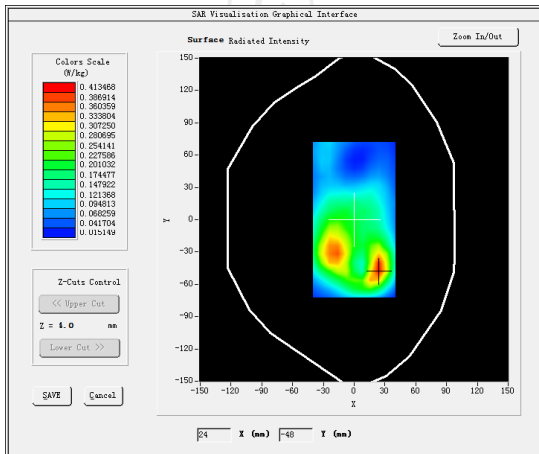
MEASUREMENT 2

Middle Band SAR (Channel 661):

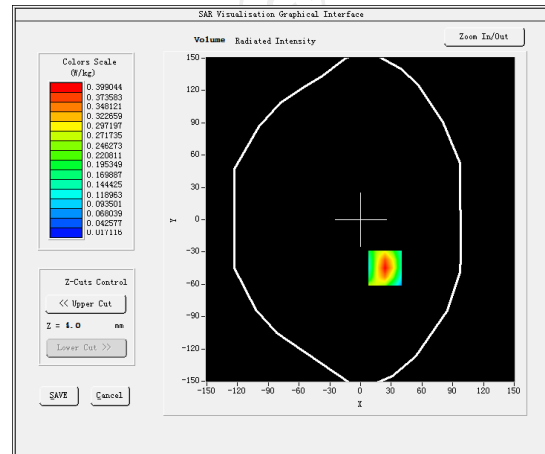
Date: 06/29/2020

Frequency (MHz)	1880.000000
Relative permittivity (real part)	53.292699
Relative permittivity (imaginary part)	15.200000
Conductivity (S/m)	1.530000
Variation (%)	-0.880000
Crest Factor	8.3
Probe Conversion factor	5.01
E-Field Probe:	SSE2 (SN 41/18 EP331)
Area Scan	<u>dx=8mm dy=8mm, h= 5.00 mm</u>
ZoomScan	<u>5x5x7, dx=8mm dy=8mm</u> <u>dz=5mm, Complete/ndx=8mm dy=8mm, h=</u> <u>5.00 mm</u>
Phantom	<u>Validation plane</u>
Device Position	<u>Body back(10mm)</u>
Band	<u>GSM1900(voice)</u>

SURFACE SAR



VOLUME SAR



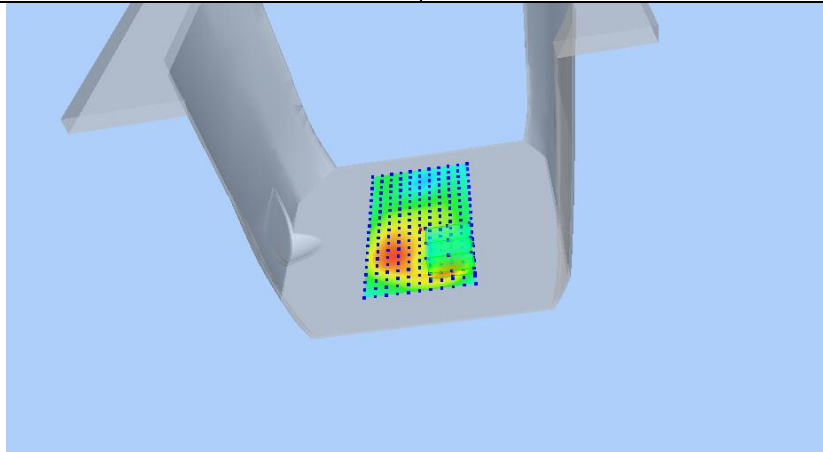
Maximum location: X=24.00, Y=-45.00 SAR Peak: 0.66 W/kg

SAR 10g (W/Kg)

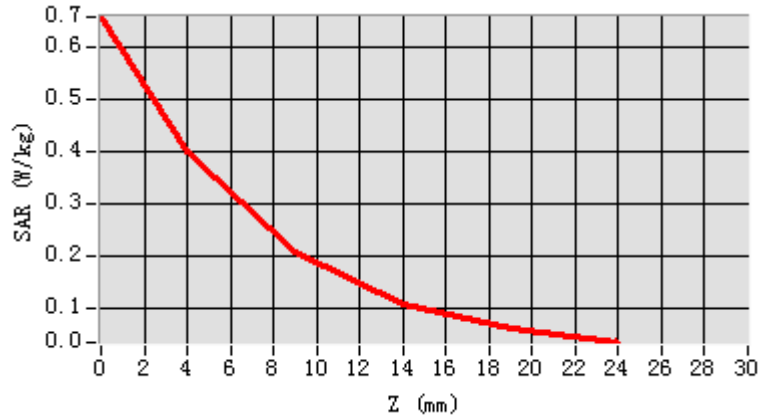
0.191178

SAR 1g (W/Kg)

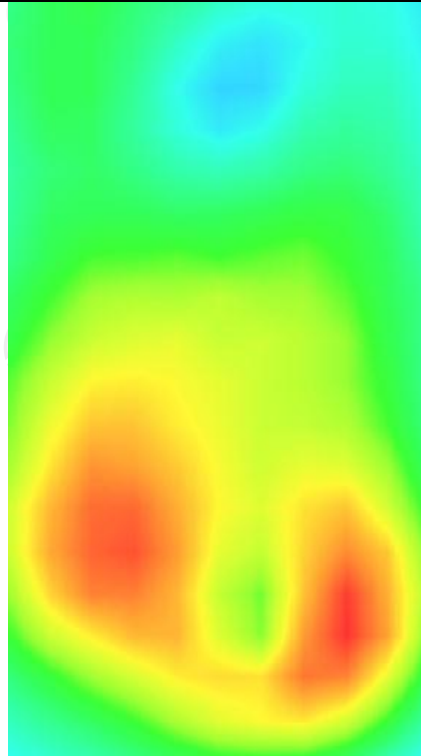
0.369994



Z (mm)	0.00	4.00	9.00	14.00	19.00
SAR (W/Kg)	0.6573	0.3990	0.2059	0.1067	0.0590



Hot spot position



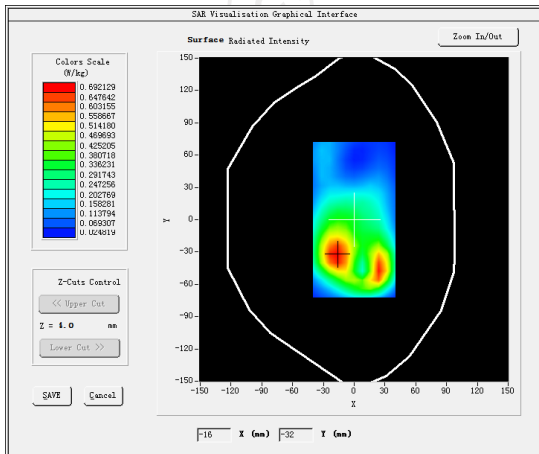
MEASUREMENT 3

Middle Band SAR (Channel 661):

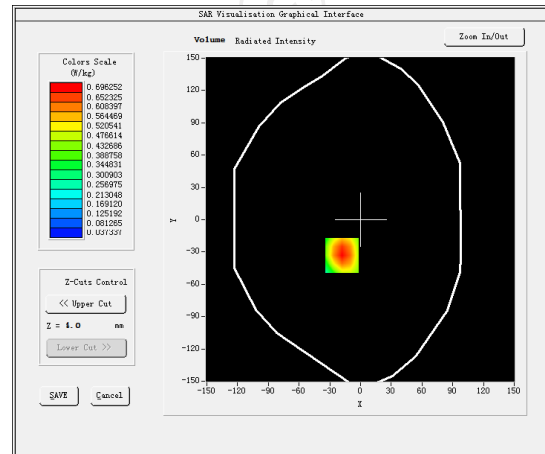
Date: 06/29/2020

Frequency (MHz)	1880.000000
Relative permittivity (real part)	53.292699
Relative permittivity (imaginary part)	15.200000
Conductivity (S/m)	1.530000
Variation (%)	-0.250000
Crest Factor	2.0
Probe Conversion factor	5.01
E-Field Probe:	SSE2 (SN 41/18 EP331)
Area Scan	<u>dx=8mm dy=8mm, h= 5.00 mm</u>
ZoomScan	<u>5x5x7, dx=8mm dy=8mm</u> <u>dz=5mm, Complete/ndx=8mm dy=8mm, h=</u> <u>5.00 mm</u>
Phantom	<u>Validation plane</u>
Device Position	<u>Body back(10mm)</u>
Band	<u>GSM1900(GPRS 4slot)</u>

SURFACE SAR



VOLUME SAR



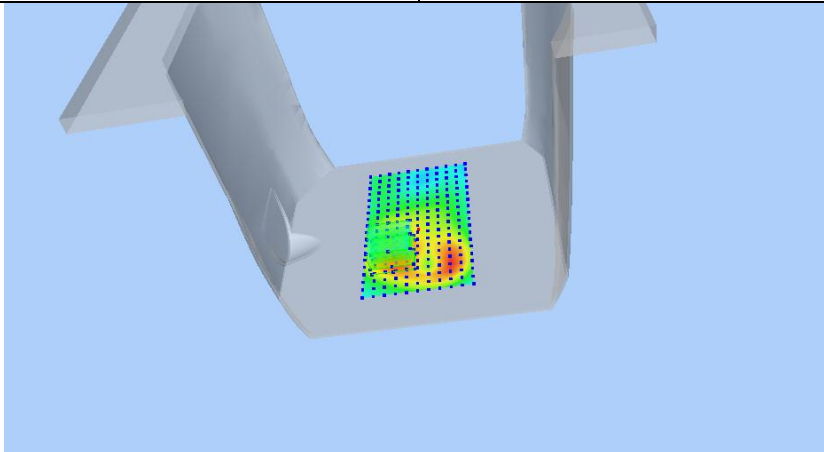
Maximum location: X=-18.00, Y=-33.00 SAR Peak: 1.01 W/kg

SAR 10g (W/Kg)

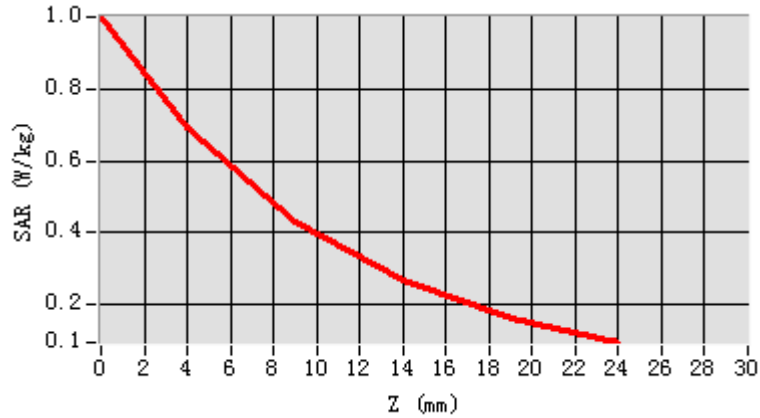
0.386785

SAR 1g (W/Kg)

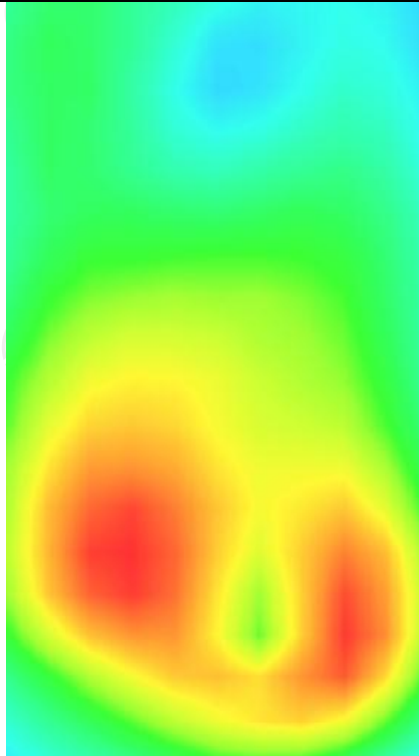
0.656765



Z (mm)	0.00	4.00	9.00	14.00	19.00
SAR (W/Kg)	1.0024	0.6963	0.4327	0.2664	0.1635



Hot spot position



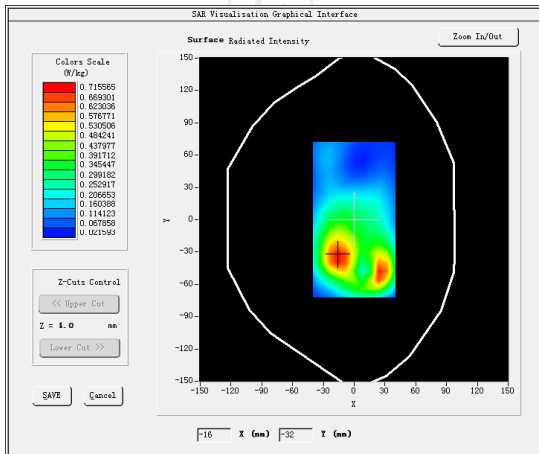
MEASUREMENT 4

Middle Band SAR (Channel 661):

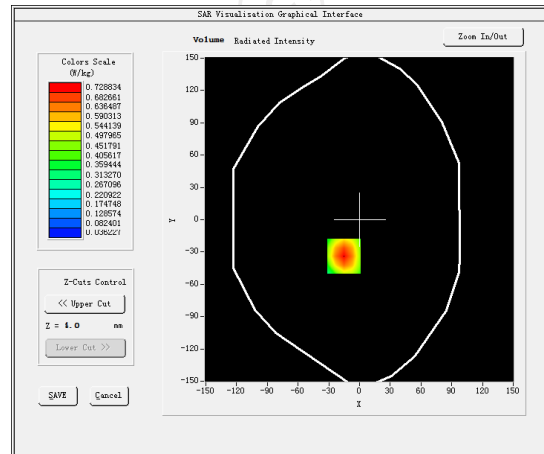
Date: 06/29/2020

Frequency (MHz)	1880.000000
Relative permittivity (real part)	53.292699
Relative permittivity (imaginary part)	15.200000
Conductivity (S/m)	1.530000
Variation (%)	-1.310000
Crest Factor	2.0
Probe Conversion factor	5.01
E-Field Probe:	SSE2 (SN 41/18 EP331)
Area Scan	<u>dx=8mm dy=8mm, h= 5.00 mm</u>
ZoomScan	<u>5x5x7, dx=8mm dy=8mm</u> <u>dz=5mm, Complete/ndx=8mm dy=8mm, h=</u> <u>5.00 mm</u>
Phantom	<u>Validation plane</u>
Device Position	<u>Body back(10mm)</u>
Band	<u>GSM1900(GPRS 4slot hotspot)</u>

SURFACE SAR



VOLUME SAR



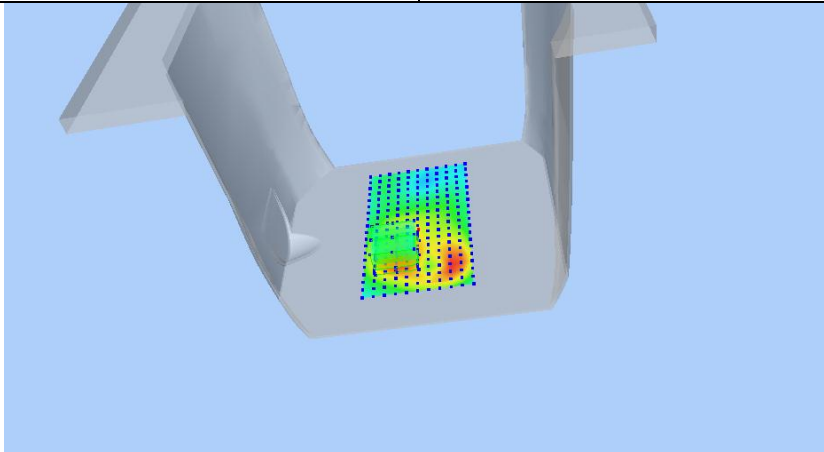
Maximum location: X=-15.00, Y=-34.00 SAR Peak: 1.10 W/kg

SAR 10g (W/Kg)

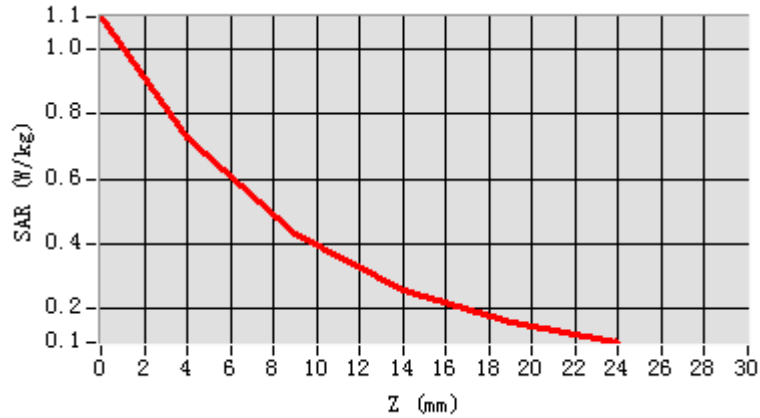
0.397564

SAR 1g (W/Kg)

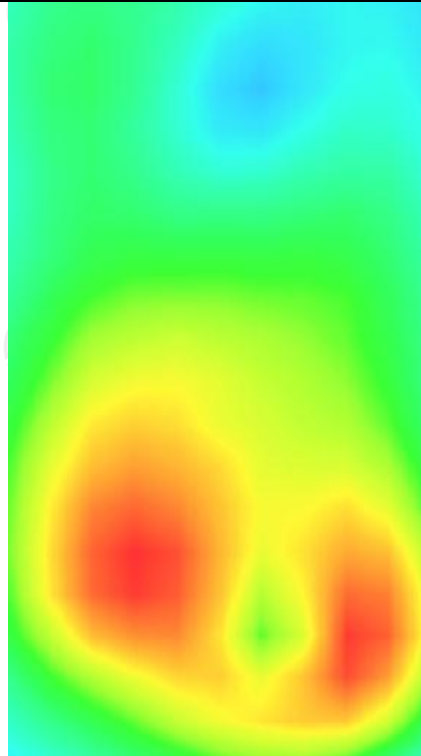
0.687148



Z (mm)	0.00	4.00	9.00	14.00	19.00
SAR (W/Kg)	1.0994	0.7288	0.4288	0.2552	0.1584



Hot spot position



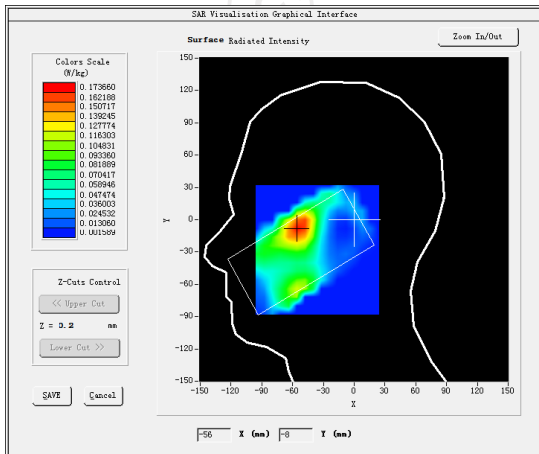
WCDMA Band II
MEASUREMENT 1

Middle Band SAR (Channel 9400):

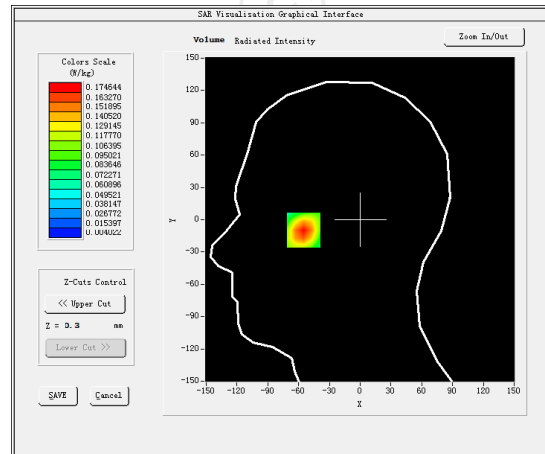
Date: 07/01/2020

Frequency (MHz)	1880.000000
Relative permittivity (real part)	39.070000
Relative permittivity (imaginary part)	14.000000
Conductivity (S/m)	1.38000
Variation (%)	4.430000
Crest Factor	1.0
Probe Conversion factor	4.85
E-Field Probe:	SSE2 (SN 41/18 EP331)
Area Scan	<u>dx=8mm dy=8mm, h= 5.00 mm</u>
ZoomScan	<u>5x5x7, dx=8mm dy=8mm</u> <u>dz=5mm, Complete/ndx=8mm dy=8mm, h=</u> <u>5.00 mm</u>
Phantom	<u>Right head</u>
Device Position	<u>Cheek</u>
Band	<u>BAND2_WCDMA1900</u>

SURFACE SAR



VOLUME SAR



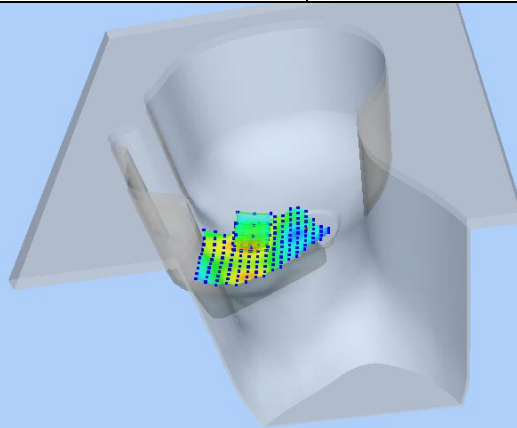
Maximum location: X=-55.00, Y=-8.00 SAR Peak: 0.25 W/kg

SAR 10g (W/Kg)

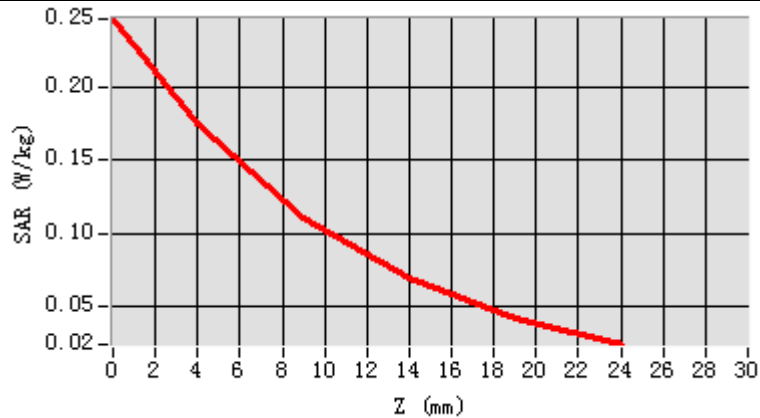
0.094300

SAR 1g (W/Kg)

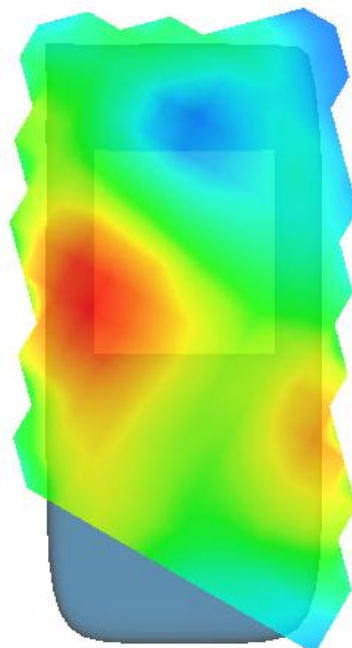
0.163514



Z (mm)	0.00	4.00	9.00	14.00	19.00
SAR (W/Kg)	0.2464	0.1746	0.1110	0.0692	0.0423



Hot spot position



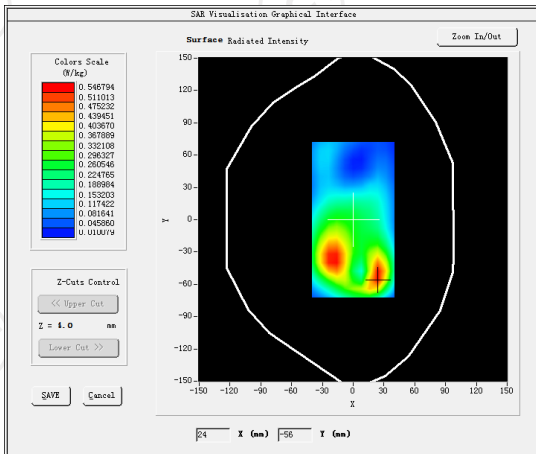
MEASUREMENT 2

Middle Band SAR (Channel 9400):

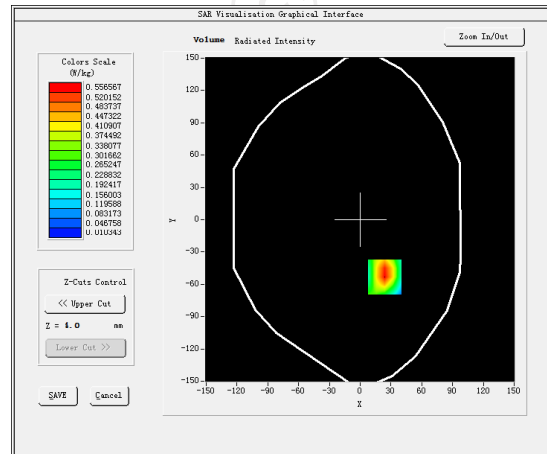
Date: 07/01/2020

Frequency (MHz)	1880.000000
Relative permittivity (real part)	53.309999
Relative permittivity (imaginary part)	14.329440
Conductivity (S/m)	1.510354
Variation (%)	-1.310000
Crest Factor	1.0
Probe Conversion factor	5.01
E-Field Probe:	SSE2 (SN 41/18 EP331)
Area Scan	<u>dx=8mm dy=8mm, h= 5.00 mm</u>
ZoomScan	<u>5x5x7, dx=8mm dy=8mm</u> <u>dz=5mm, Complete/ndx=8mm dy=8mm, h=</u> <u>5.00 mm</u>
Phantom	<u>Validation plane</u>
Device Position	<u>Body back(10mm)</u>
Band	<u>BAND2_WCDMA1900</u>

SURFACE SAR



VOLUME SAR



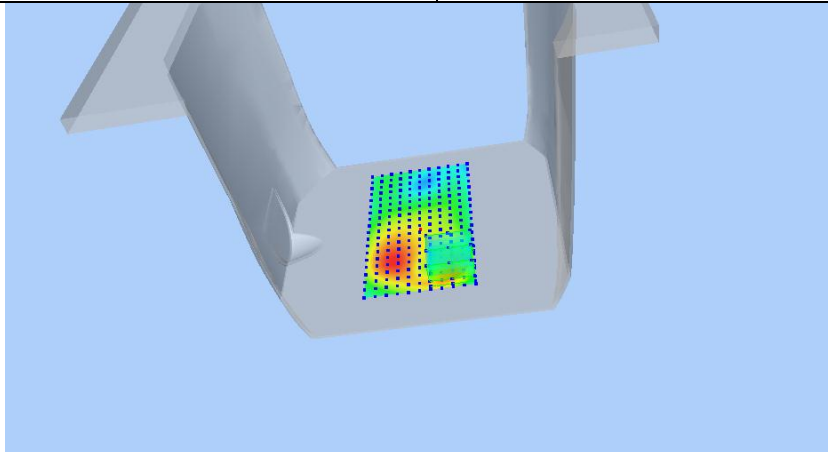
Maximum location: X=24.00, Y=-53.00 SAR Peak: 0.94 W/kg

SAR 10g (W/Kg)

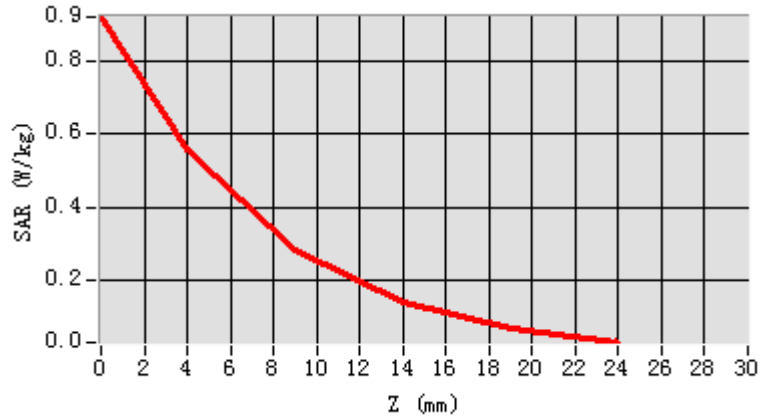
0.260007

SAR 1g (W/Kg)

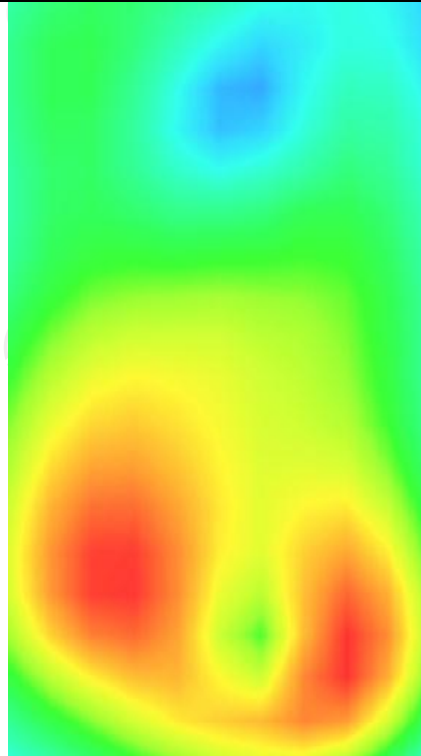
0.521068



Z (mm)	0.00	4.00	9.00	14.00	19.00
SAR (W/Kg)	0.9214	0.5566	0.2817	0.1386	0.0688



Hot spot position



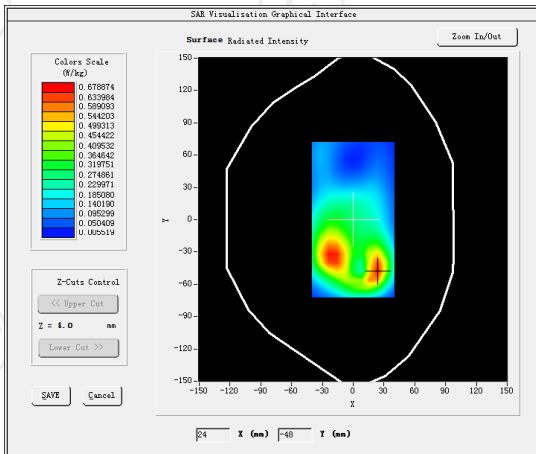
MEASUREMENT 3

Middle Band SAR (Channel 9400):

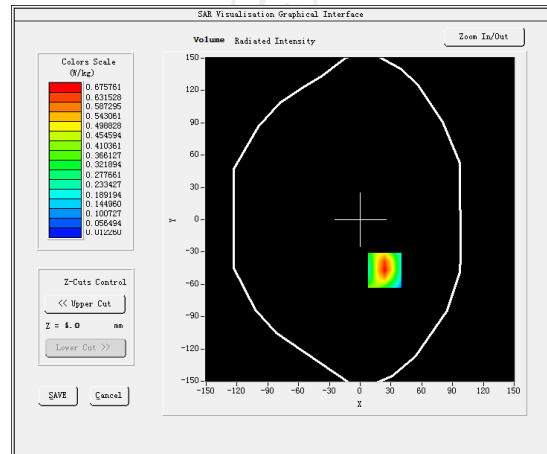
Date: 07/01/2020

Frequency (MHz)	1880.000000
Relative permittivity (real part)	53.309999
Relative permittivity (imaginary part)	14.329440
Conductivity (S/m)	1.510354
Variation (%)	-0.920000
Crest Factor	1.0
Probe Conversion factor	5.01
E-Field Probe:	SSE2 (SN 41/18 EP331)
Area Scan	<u>dx=8mm dy=8mm, h= 5.00 mm</u>
ZoomScan	<u>5x5x7, dx=8mm dy=8mm</u> <u>dz=5mm, Complete/ndx=8mm dy=8mm, h=</u> <u>5.00 mm</u>
Phantom	<u>Validation plane</u>
Device Position	<u>Body back(10mm)</u>
Band	<u>BAND2_WCDMA1900</u>

SURFACE SAR



VOLUME SAR



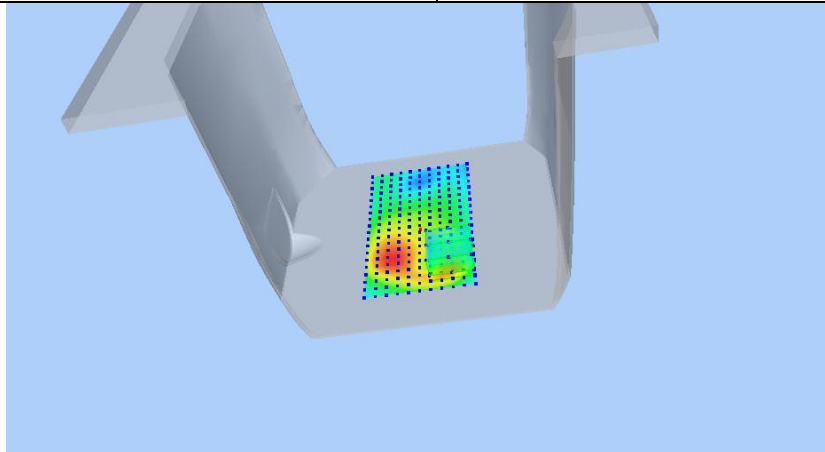
Maximum location: X=24.00, Y=-47.00 SAR Peak: 1.12 W/kg

SAR 10g (W/Kg)

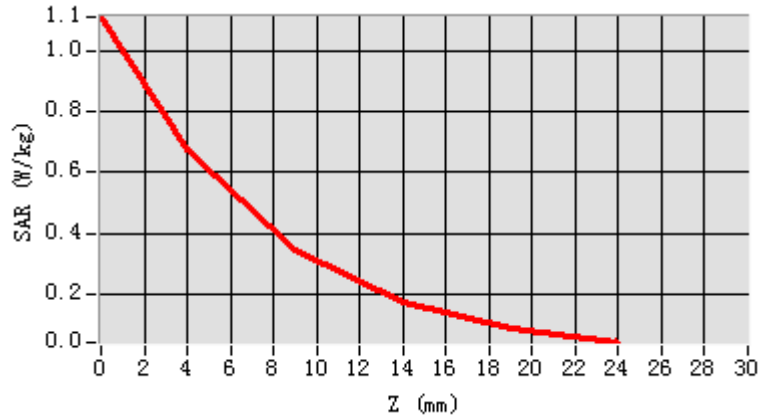
0.310651

SAR 1g (W/Kg)

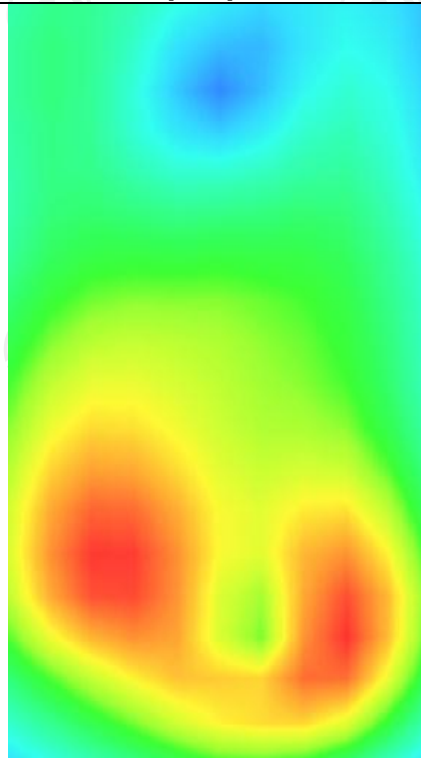
0.625493



Z (mm)	0.00	4.00	9.00	14.00	19.00
SAR (W/Kg)	1.1116	0.6758	0.3456	0.1722	0.0869



Hot spot position



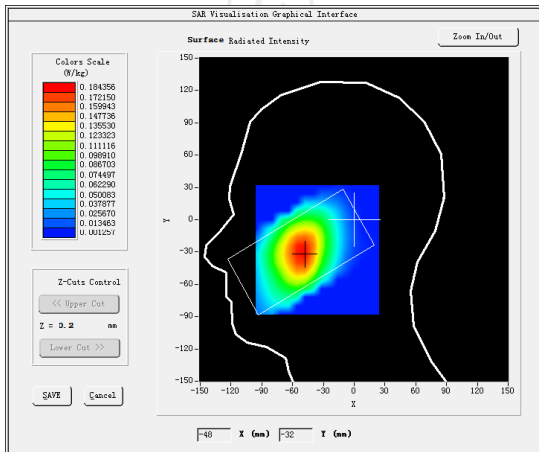
WCDMA Band V
MEASUREMENT 1

Middle Band SAR (Channel 9182):

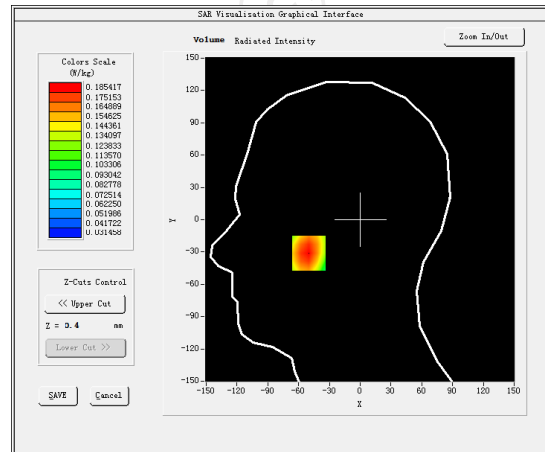
Date: 06/24/2020

Frequency (MHz)	836.400000
Relative permittivity (real part)	41.417760
Relative permittivity (imaginary part)	18.129852
Conductivity (S/m)	0.874923
Variation (%)	-1.070000
Crest Factor:	1.0
Probe Conversion factor	5.50
E-Field Probe:	SSE2 (SN 41/18 EP331)
Area Scan	<u>dx=8mm dy=8mm, h= 5.00 mm</u>
ZoomScan	<u>5x5x7, dx=8mm dy=8mm</u> <u>dz=5mm, Complete/ndx=8mm dy=8mm, h=</u> <u>5.00 mm</u>
Phantom	<u>Left head</u>
Device Position	<u>Cheek</u>
Band	<u>BAND5_WCDMA850</u>

SURFACE SAR



VOLUME SAR



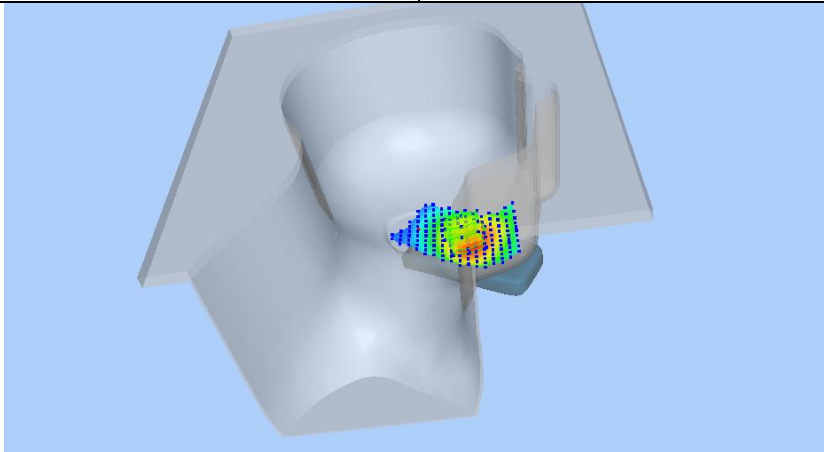
Maximum location: X=-50.00, Y=-31.00 SAR Peak: 0.22 W/kg

SAR 10g (W/Kg)

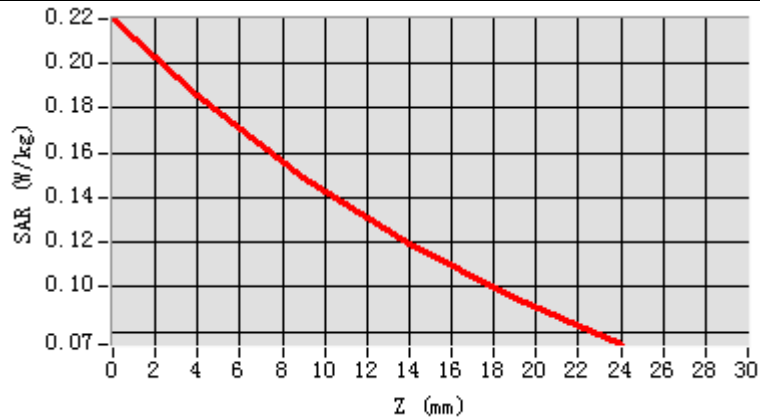
0.133295

SAR 1g (W/Kg)

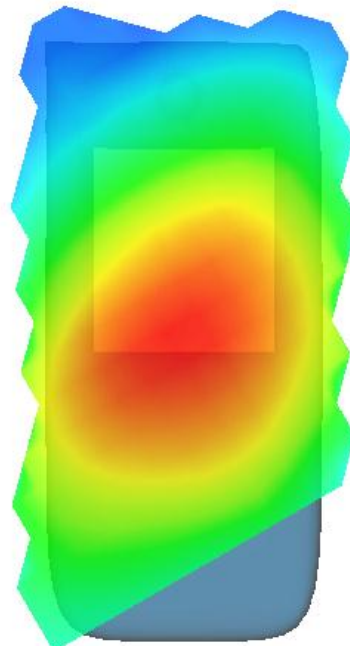
0.178875



Z (mm)	0.00	4.00	9.00	14.00	19.00
SAR (W/Kg)	0.2197	0.1854	0.1492	0.1195	0.0951



Hot spot position



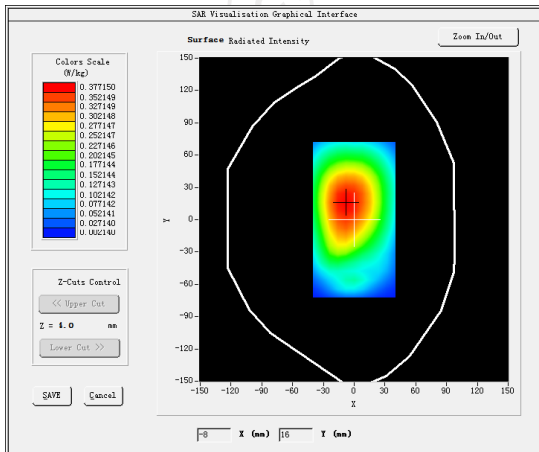
MEASUREMENT 2

Middle Band SAR (Channel 9182):

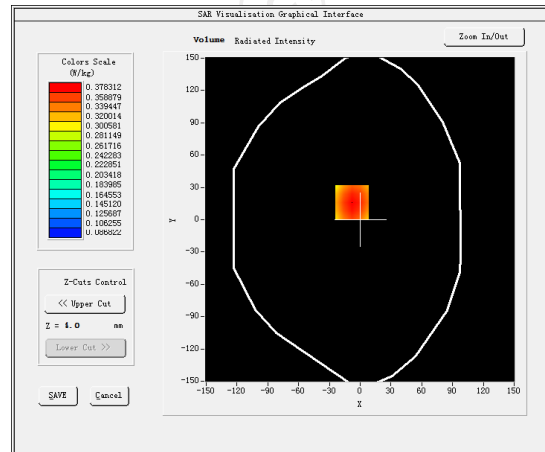
Date: 06/24/2020

Frequency (MHz)	836.400000
Relative permittivity (real part)	55.242077
Relative permittivity (imaginary part)	21.378187
Conductivity (S/m)	0.938883
Variation (%)	-0.590000
Crest Factor:	1.0
Probe Conversion factor	5.65
E-Field Probe:	SSE2 (SN 41/18 EP331)
Area Scan	<u>dx=8mm dy=8mm, h= 5.00 mm</u>
ZoomScan	<u>5x5x7, dx=8mm dy=8mm</u> <u>dz=5mm, Complete/ndx=8mm dy=8mm, h=</u> <u>5.00 mm</u>
Phantom	<u>Validation plane</u>
Device Position	<u>Body back(10mm)</u>
Band	<u>BAND5_WCDMA850</u>

SURFACE SAR



VOLUME SAR



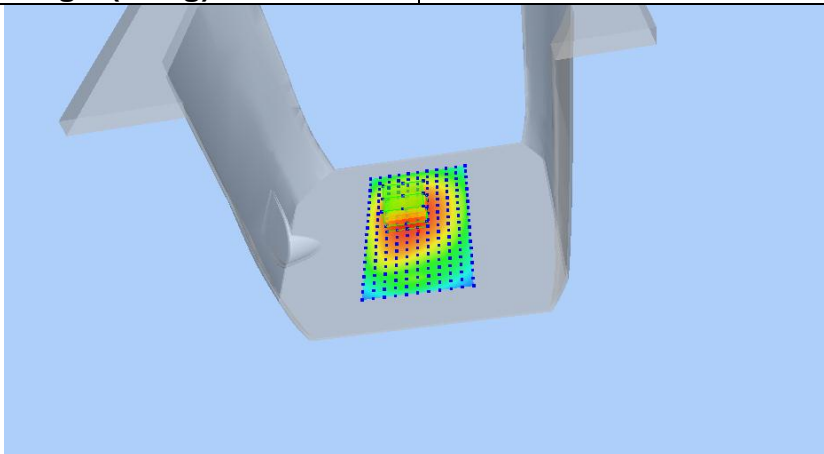
Maximum location: X=-8.00, Y=16.00 SAR Peak: 0.47 W/kg

SAR 10g (W/Kg)

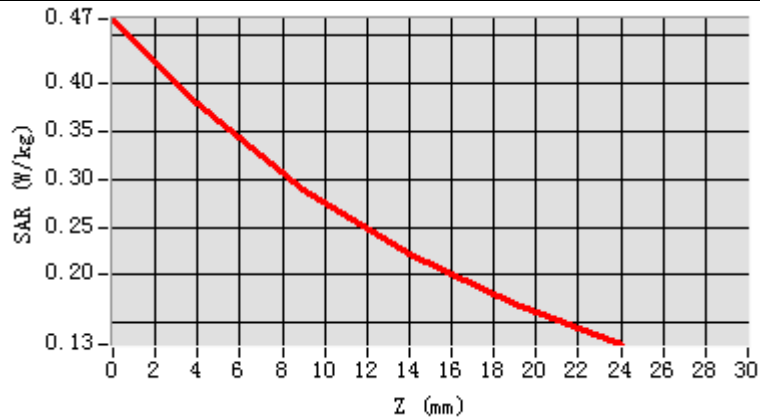
0.269558

SAR 1g (W/Kg)

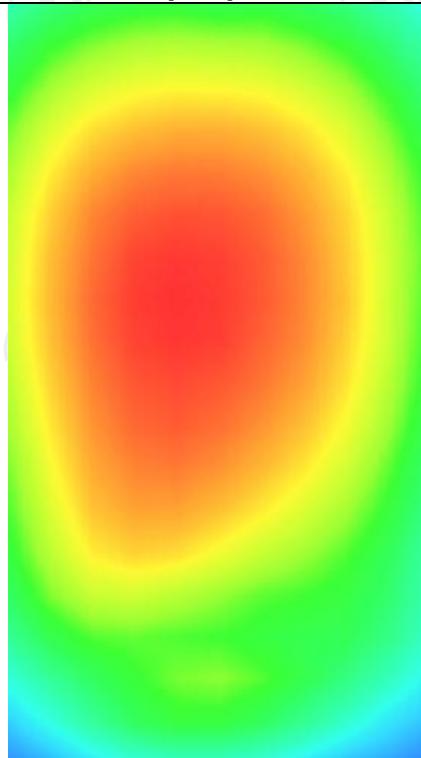
0.365557



Z (mm)	0.00	4.00	9.00	14.00	19.00
SAR (W/Kg)	0.4675	0.3783	0.2893	0.2214	0.1694



Hot spot position



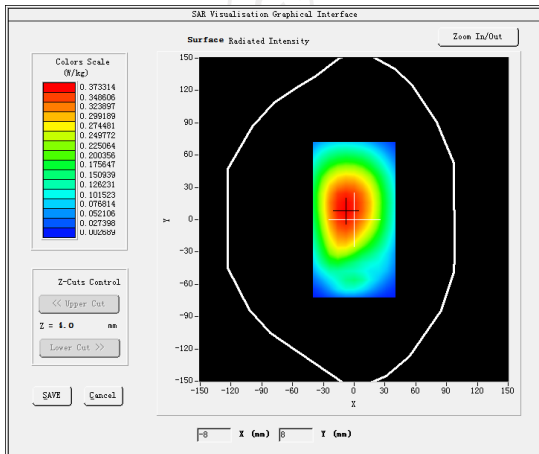
MEASUREMENT 3

Middle Band SAR (Channel 9182):

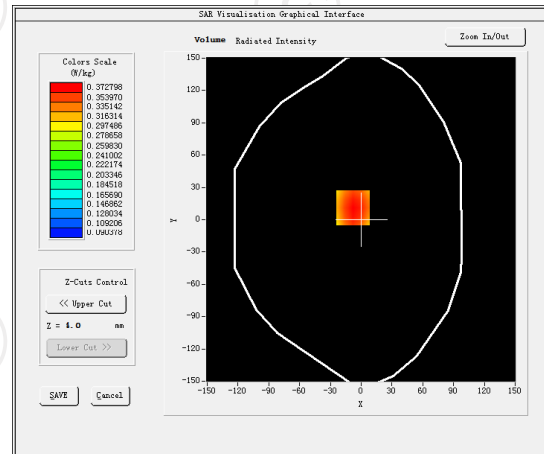
Date: 06/24/2020

Frequency (MHz)	836.400000
Relative permittivity (real part)	55.242077
Relative permittivity (imaginary part)	21.378187
Conductivity (S/m)	0.938883
Variation (%)	-0.460000
Crest Factor:	1.0
Probe Conversion factor	5.65
E-Field Probe:	SSE2 (SN 41/18 EP331)
Area Scan	<u>dx=8mm dy=8mm, h= 5.00 mm</u>
ZoomScan	<u>5x5x7, dx=8mm dy=8mm</u> <u>dz=5mm, Complete/ndx=8mm dy=8mm,</u> <u>h= 5.00 mm</u>
Phantom	<u>Validation plane</u>
Device Position	<u>Body back(10mm)</u>
Band	<u>BAND5_WCDMA850(hotspot)</u>

SURFACE SAR



VOLUME SAR



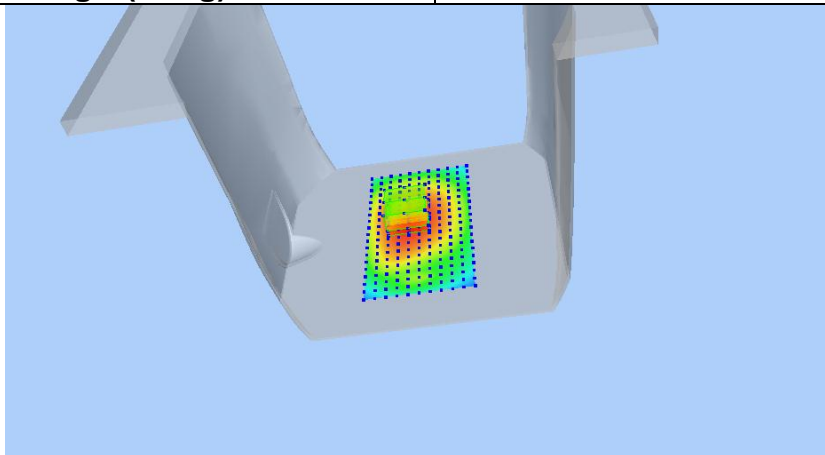
Maximum location: X=-8.00, Y=11.00 SAR Peak: 0.45 W/kg

SAR 10g (W/Kg)

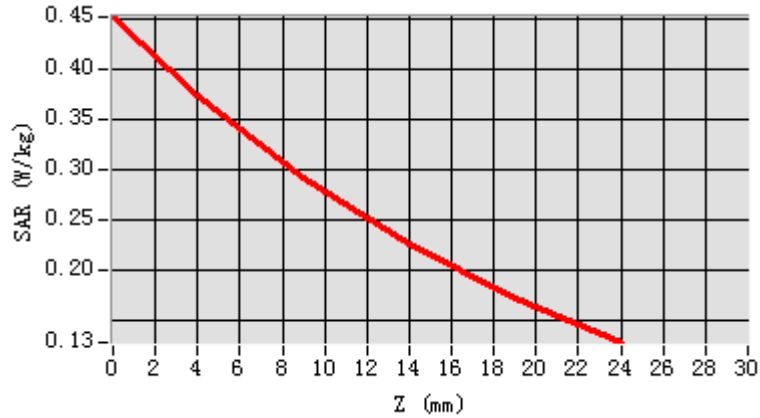
0.268122

SAR 1g (W/Kg)

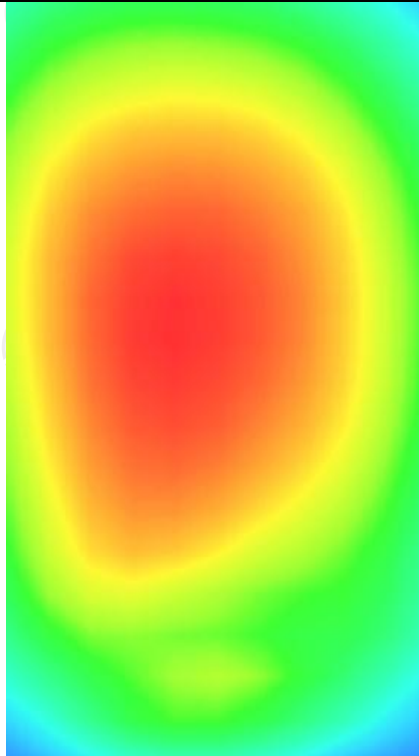
0.360610



Z (mm)	0.00	4.00	9.00	14.00	19.00
SAR (W/Kg)	0.4518	0.3728	0.2906	0.2244	0.1712



Hot spot position



WIFI 2.4G

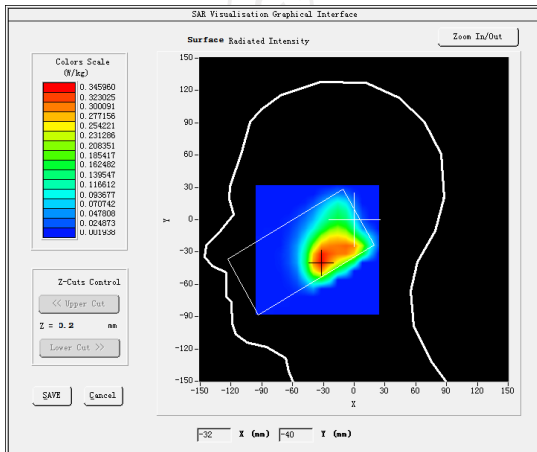
MEASUREMENT 1

Middle Band SAR (Channel 6):

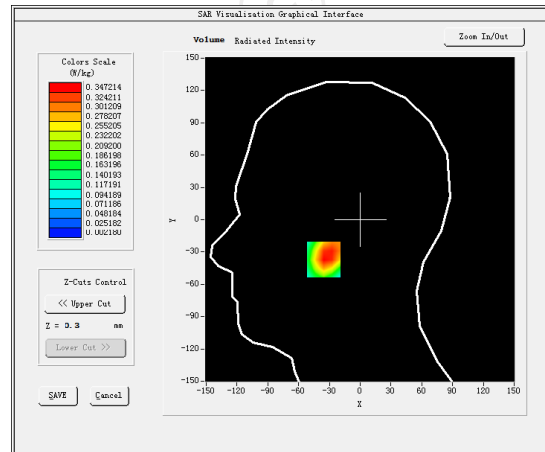
Date: 07/06/2020

Frequency (MHz)	2437.000000
Relative permittivity (real part)	37.821613
Relative permittivity (imaginary part)	13.546980
Conductivity (S/m)	1.834111
Variation (%)	-4.450000
Crest Factor	1.0
Probe Conversion factor	4.58
E-Field Probe:	SSE2 (SN 41/18 EP331)
Area Scan	<u>dx=8mm dy=8mm, h= 5.00 mm</u>
ZoomScan	<u>5x5x7, dx=8mm dy=8mm</u> <u>dz=5mm, Complete/ndx=8mm dy=8mm, h=</u> <u>5.00 mm</u>
Phantom	<u>Left head</u>
Device Position	<u>Cheek</u>
Band	<u>IEEE 802.11b ISM</u>

SURFACE SAR



VOLUME SAR



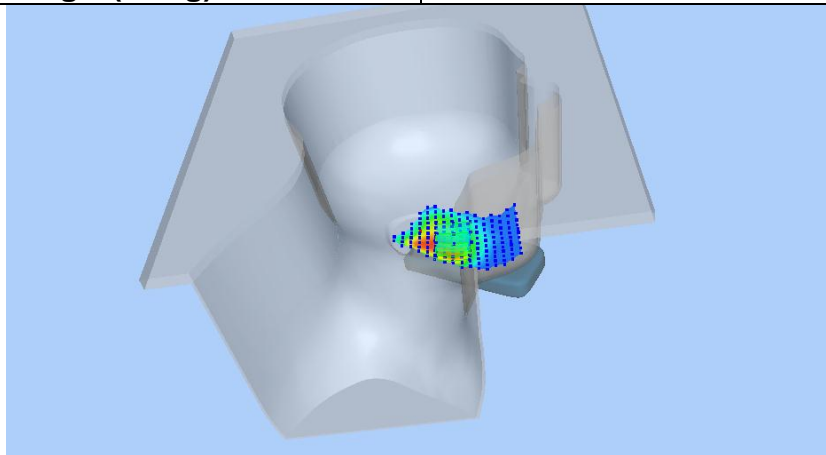
Maximum location: X=-31.00, Y=-37.00 SAR Peak: 0.60 W/kg

SAR 10g (W/Kg)

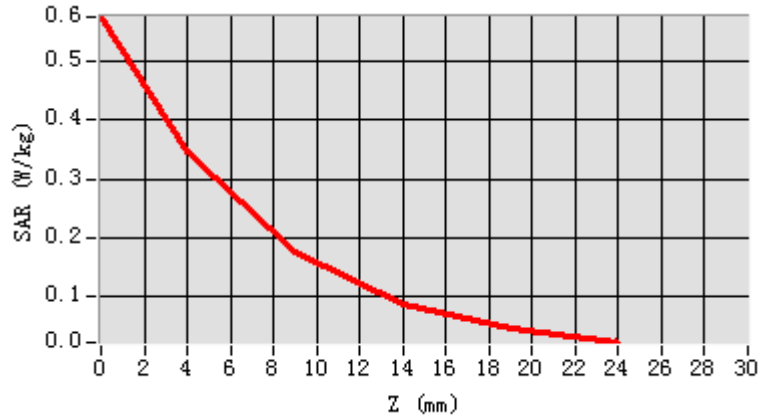
0.175669

SAR 1g (W/Kg)

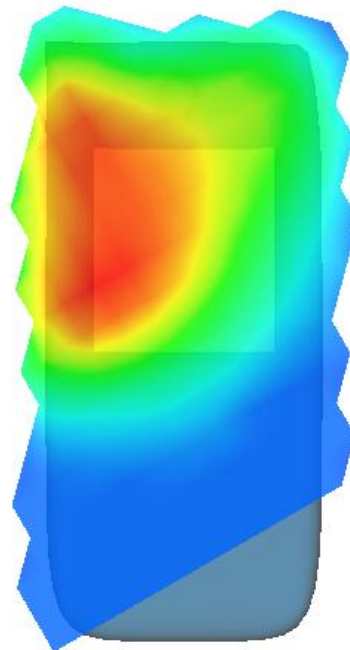
0.336432



Z (mm)	0.00	4.00	9.00	14.00	19.00
SAR (W/Kg)	0.5752	0.3472	0.1763	0.0879	0.0452



Hot spot position



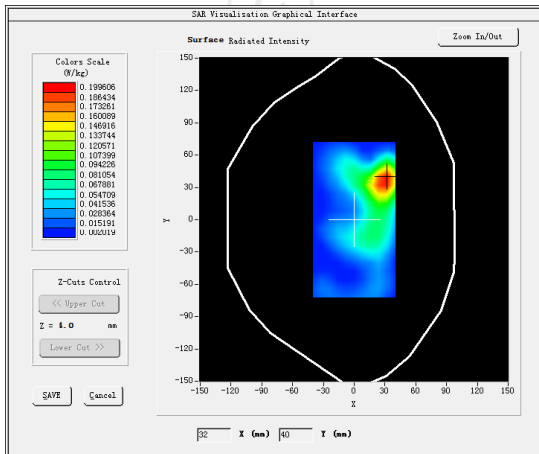
MEASUREMENT 2

Higher Band SAR (Channel 11):

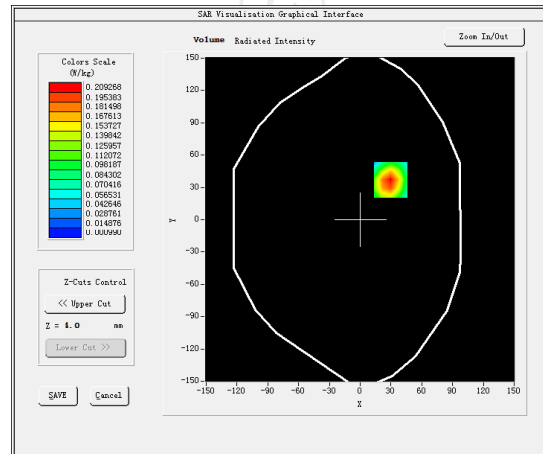
Date: 07/06/2020

Frequency (MHz)	2437.000000
Relative permittivity (real part)	54.616199
Relative permittivity (imaginary part)	14.930150
Conductivity (S/m)	2.012159
Variation (%)	-1.560000
Crest Factor	1.0
Probe Conversion factor	4.70
E-Field Probe:	SSE2 (SN 41/18 EP331)
Area Scan	<u>dx=8mm dy=8mm, h= 5.00 mm</u>
ZoomScan	<u>5x5x7, dx=8mm dy=8mm</u> <u>dz=5mm, Complete/ndx=8mm dy=8mm, h=</u> <u>5.00 mm</u>
Phantom	Validation plane
Device Position	Body back(10mm)
Band	<u>IEEE 802.11b ISM</u>

SURFACE SAR



VOLUME SAR



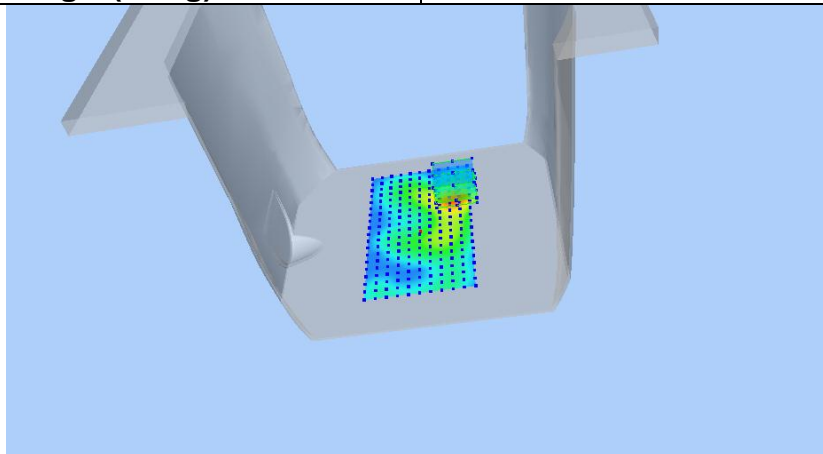
Maximum location: X=30.00, Y=37.00 SAR Peak: 0.38 W/kg

SAR 10g (W/Kg)

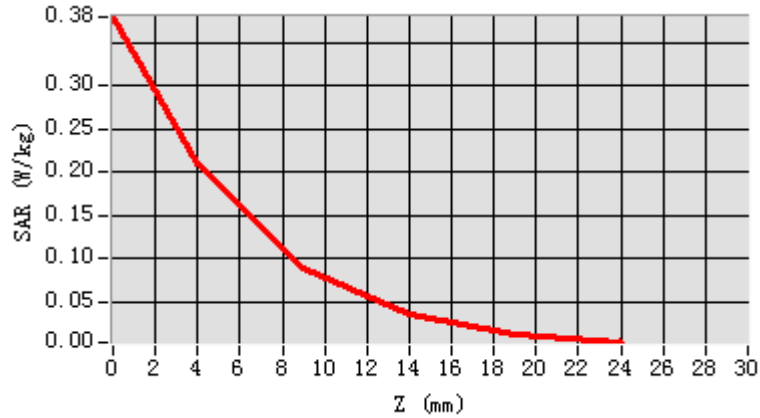
0.090938

SAR 1g (W/Kg)

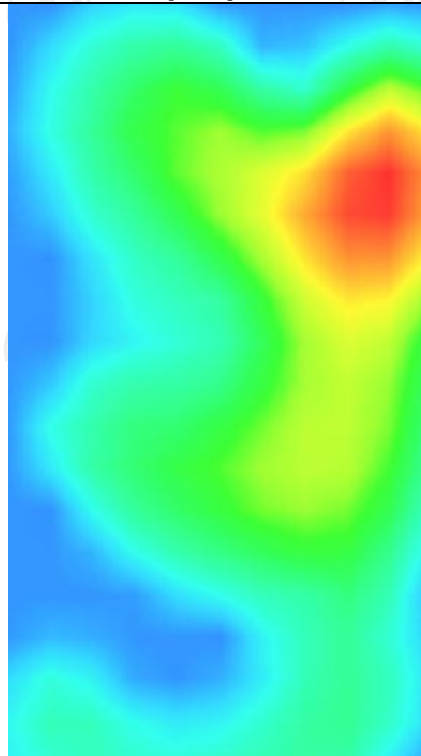
0.197121



Z (mm)	0.00	4.00	9.00	14.00	19.00
SAR (W/Kg)	0.3797	0.2093	0.0896	0.0340	0.0114



Hot spot position



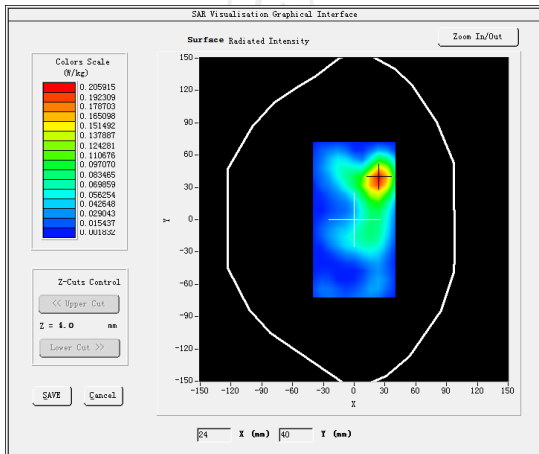
MEASUREMENT 3

Higher Band SAR (Channel 11):

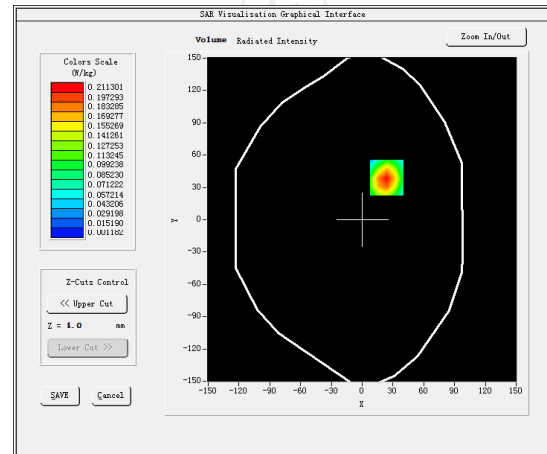
Date: 07/06/2020

Frequency (MHz)	2437.000000
Relative permittivity (real part)	54.616199
Relative permittivity (imaginary part)	14.930150
Conductivity (S/m)	2.012159
Variation (%)	-1.990000
Crest Factor	1.0
Probe Conversion factor	4.70
E-Field Probe:	SSE2 (SN 41/18 EP331)
Area Scan	<u>dx=8mm dy=8mm, h= 5.00 mm</u>
ZoomScan	<u>5x5x7, dx=8mm dy=8mm</u> <u>dz=5mm, Complete/ndx=8mm dy=8mm, h=</u> <u>5.00 mm</u>
Phantom	Validation plane
Device Position	Body back(10mm)
Band	<u>IEEE 802.11b ISM(hotspot)</u>

SURFACE SAR



VOLUME SAR



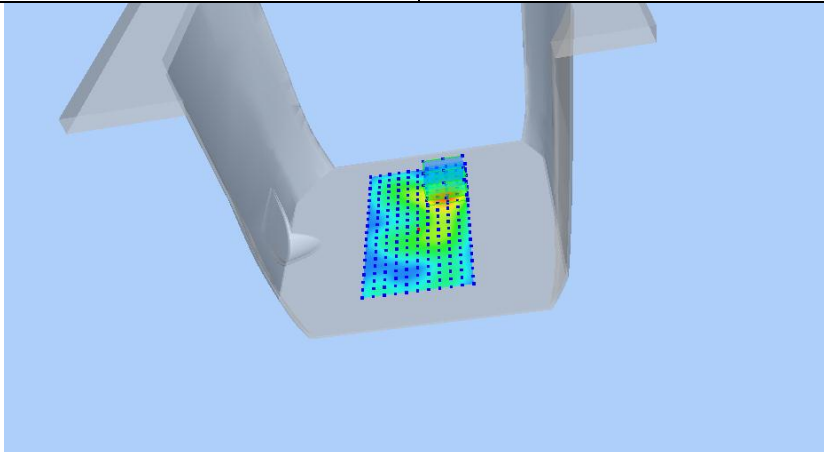
Maximum location: X=24.00, Y=39.00 SAR Peak: 0.38 W/kg

SAR 10g (W/Kg)

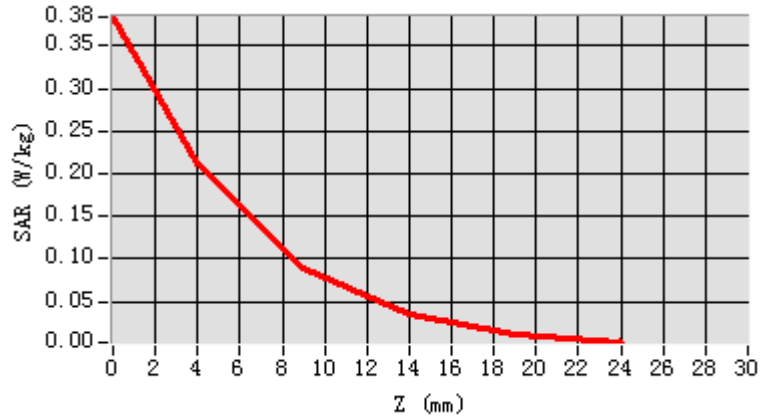
0.091829

SAR 1g (W/Kg)

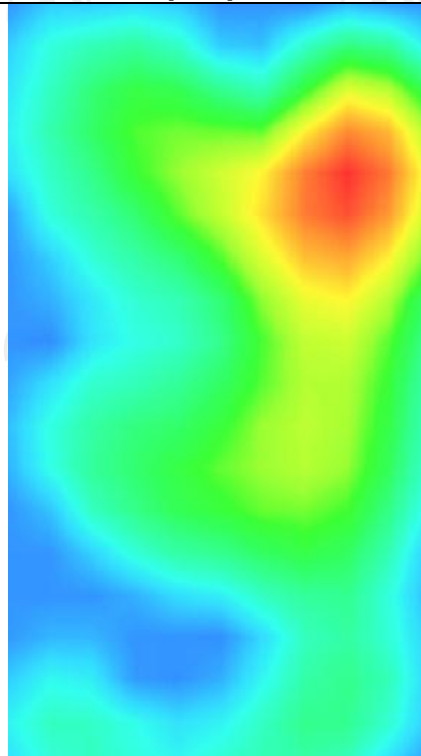
0.198842



Z (mm)	0.00	4.00	9.00	14.00	19.00
SAR (W/Kg)	0.3836	0.2113	0.0904	0.0343	0.0115



Hot spot position



Appendix A: EUT Photos



Liquid depth



The Body Liquid of 835MHz (15.4cm)



The Body Liquid of 1800MHz (15.2 cm)



The Body Liquid of 1900MHz (16.4 cm)



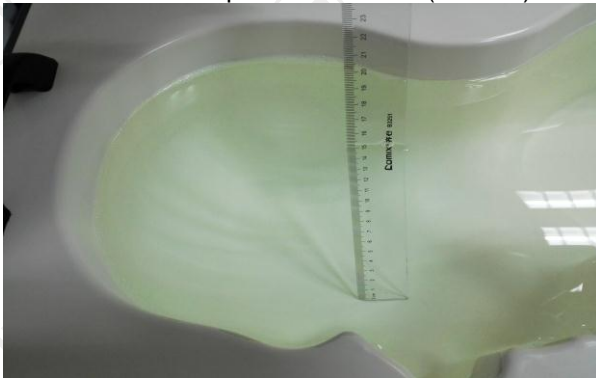
The Body Liquid of 2450MHz (15.3cm)



The Head Liquid of 1900MHz (15.5cm)



The Head Liquid of 2450MHz (15.6cm)

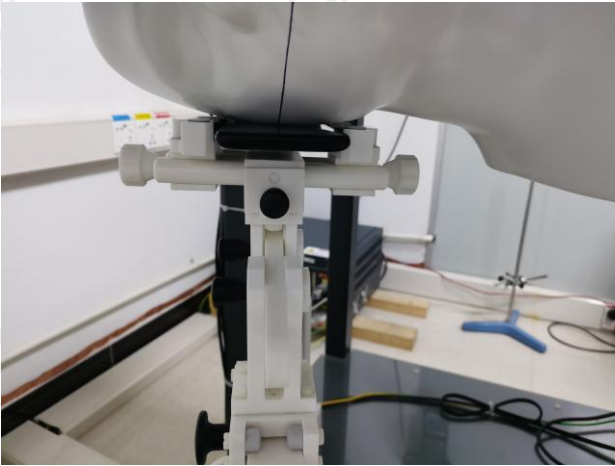


The Head Liquid of 835MHz (15.3cm)

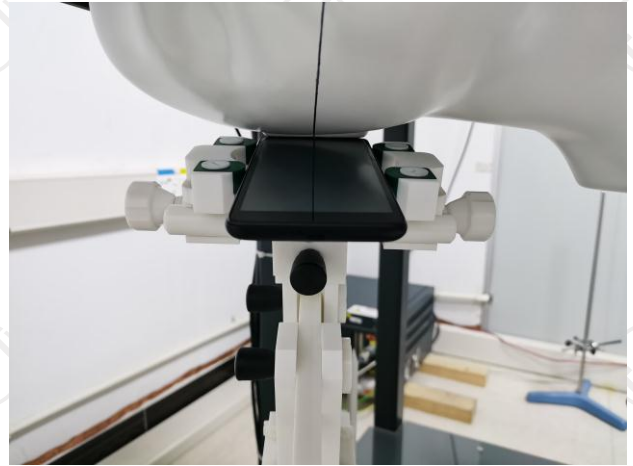


The Head Liquid of 1800MHz (15.2cm)

Appendix B: Test Setup Photos



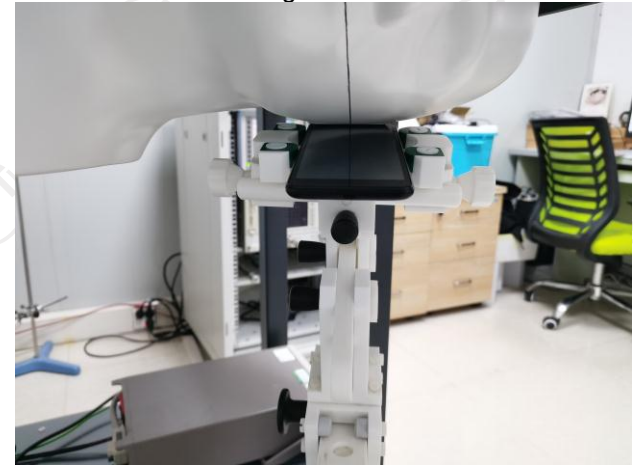
Right Cheek



Right Tilted



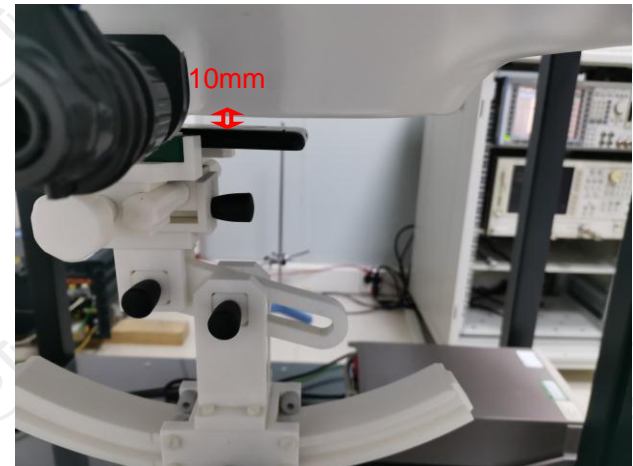
Left Cheek



Left Tilted



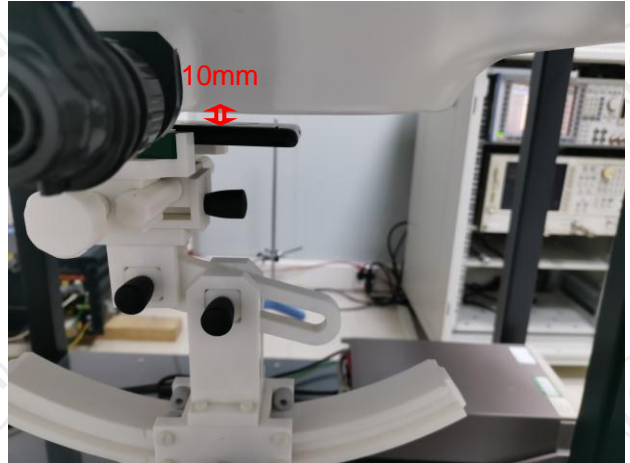
Body worn – Front (10mm)



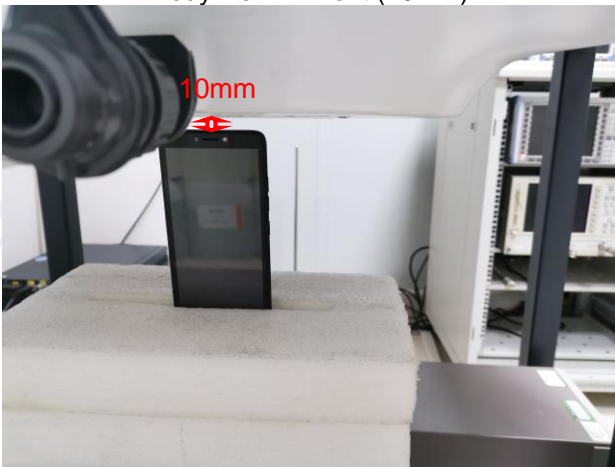
Body worn – Back (10mm)



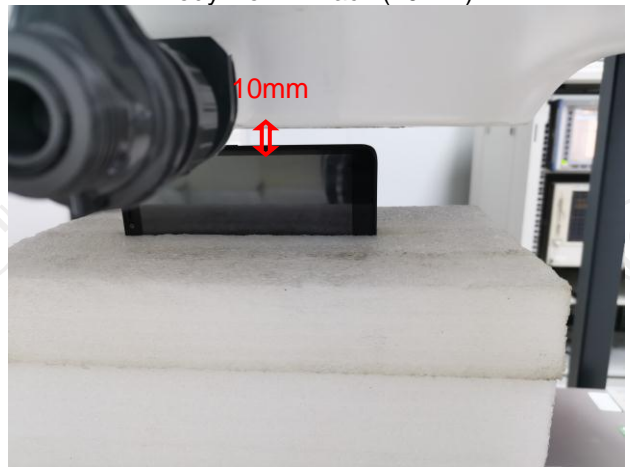
Body worn – Front (10mm)



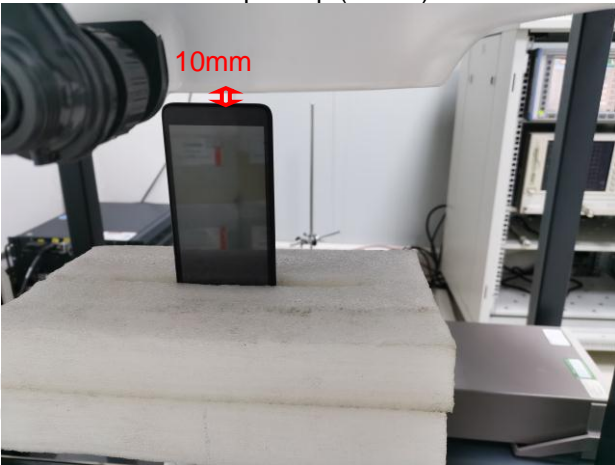
Body worn – Back (10mm)



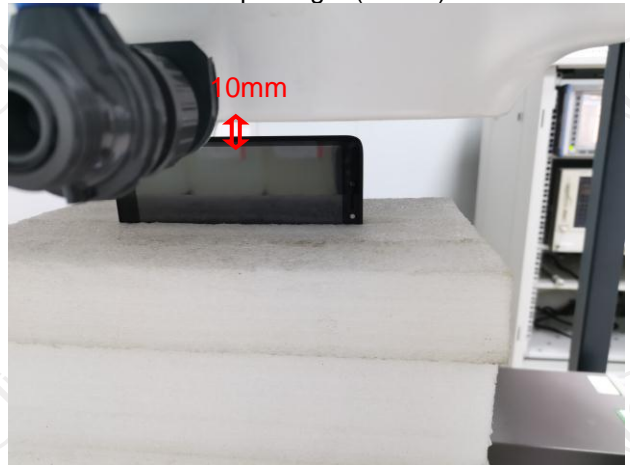
Hotspot Top (10mm)



Hotspot Right (10mm)



Hotspot Bottom (10mm)



Hotspot Left (10mm)