

深圳市亿圣邦科技有限公司

manufacturer:
Shenzhen Yishengbang Technology Co., Ltd.

Customer: 三奕

ANT Model: SLK-SY-3212A2-R-200IV-G-1.13, SLK-SY-3212A3-L-80IV-B-1.13

Antenna Type: FPC Antenna

Report date: 2024-7-25

manufacturer add: 101, Building C, Shenzhen Qianwan
Hard Technology Industrial Park, Xixiang Street, Bao'an
District, Shenzhen

Prepared by : 陈仕联

Checked by : Eason Huang

Approved by :

Purpose

This report is to measure the performance of SLK for Master Antenna on 三奕. All measure data are showed below.

Content

1. Product Overview

2. Test Result

2.1 WIFI Antenna VSWR/S11

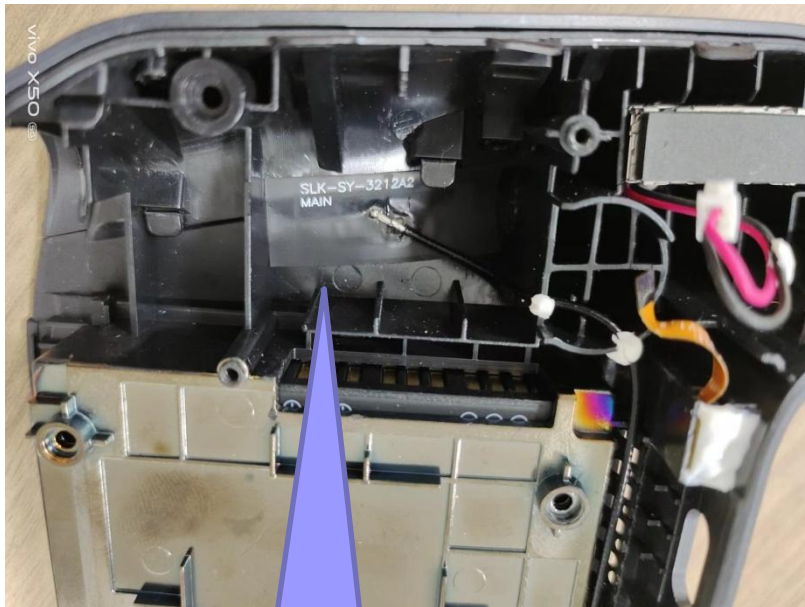
2.2 Antenna Parameter

2.3 WIFI Antenna Gain/Efficiency/3D DATA

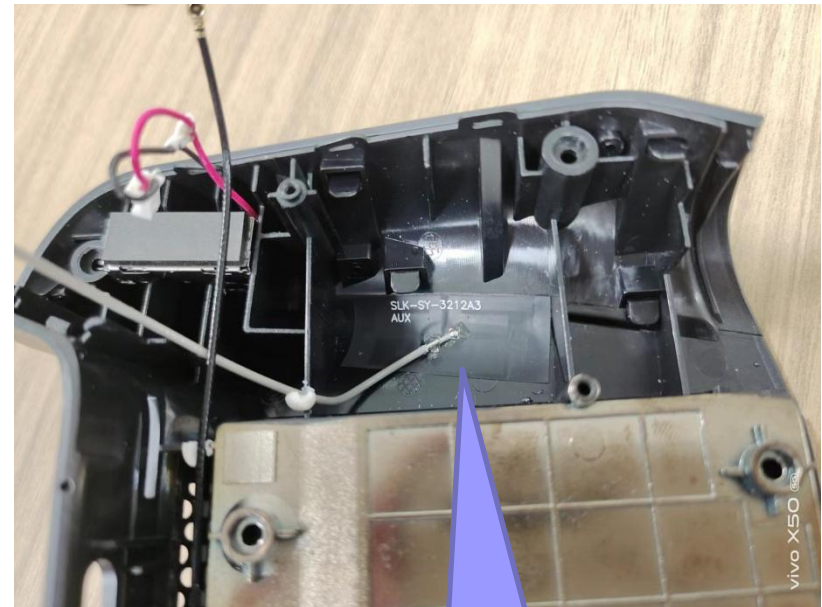
2.4 WIFI Active Test

3. Conclusions

1. Product Overview



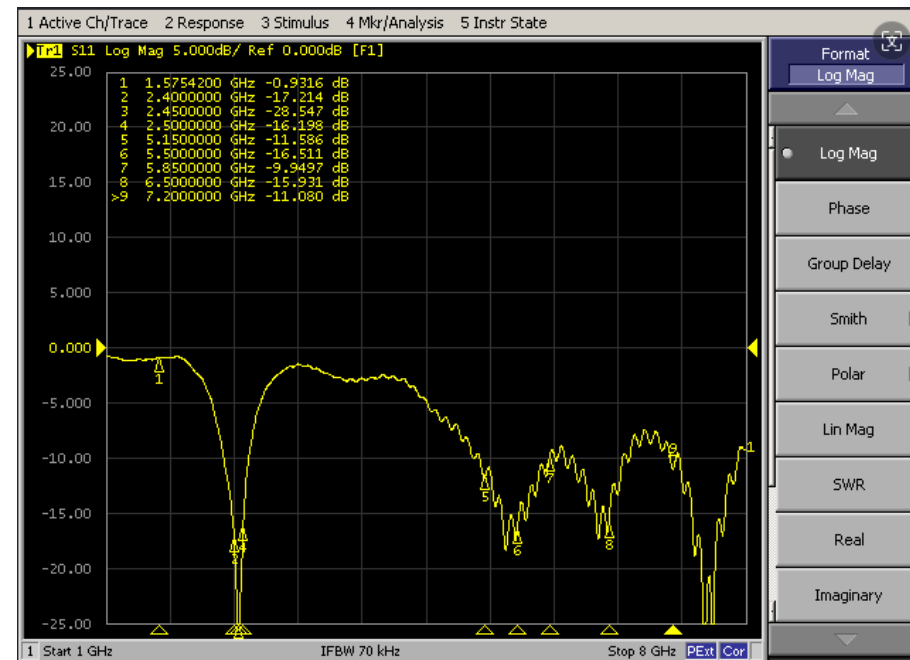
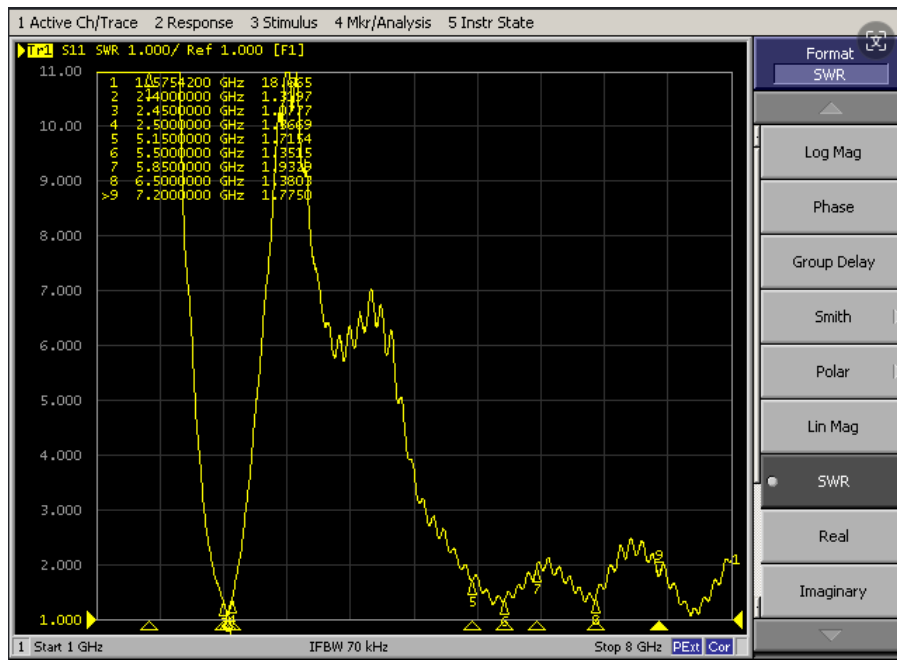
WIFI-AUX天线



WIFI-MAIN天线

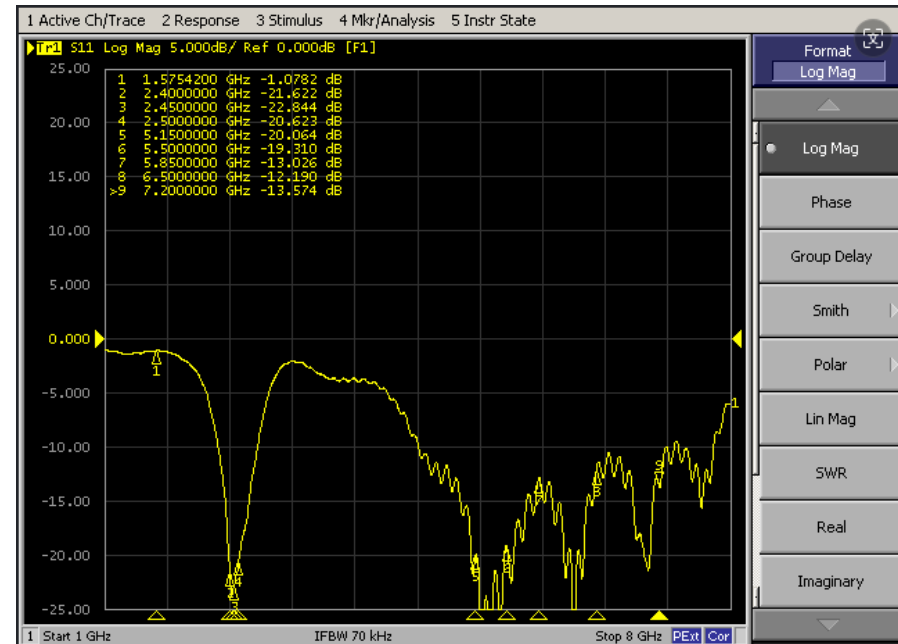
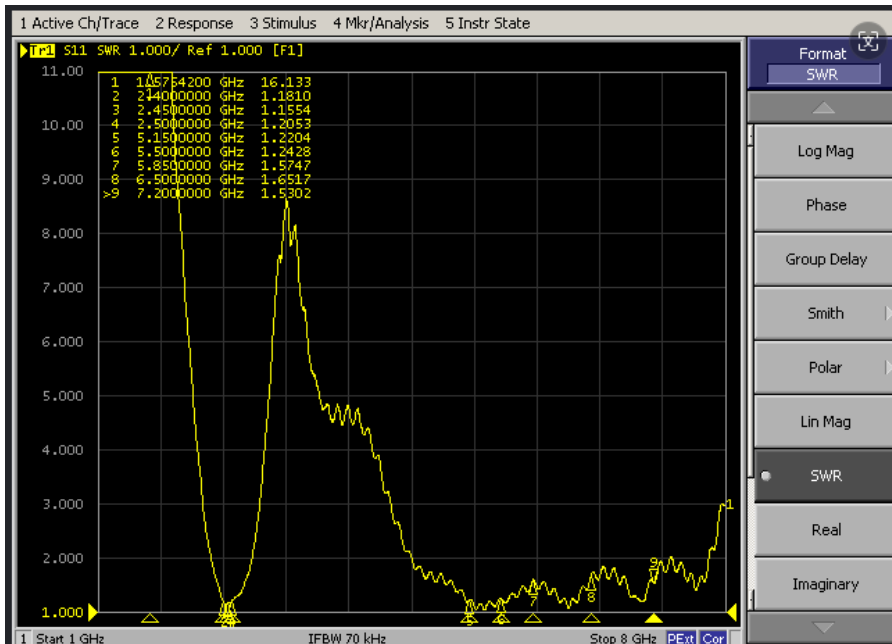
2. Test Result

2.1 WIFI MAIN Antenna VSWR/S11



2. Test Result

2.1 WIFI AUX Antenna VSWR/S11





2. Test Result

2.2 Antenna Parameters

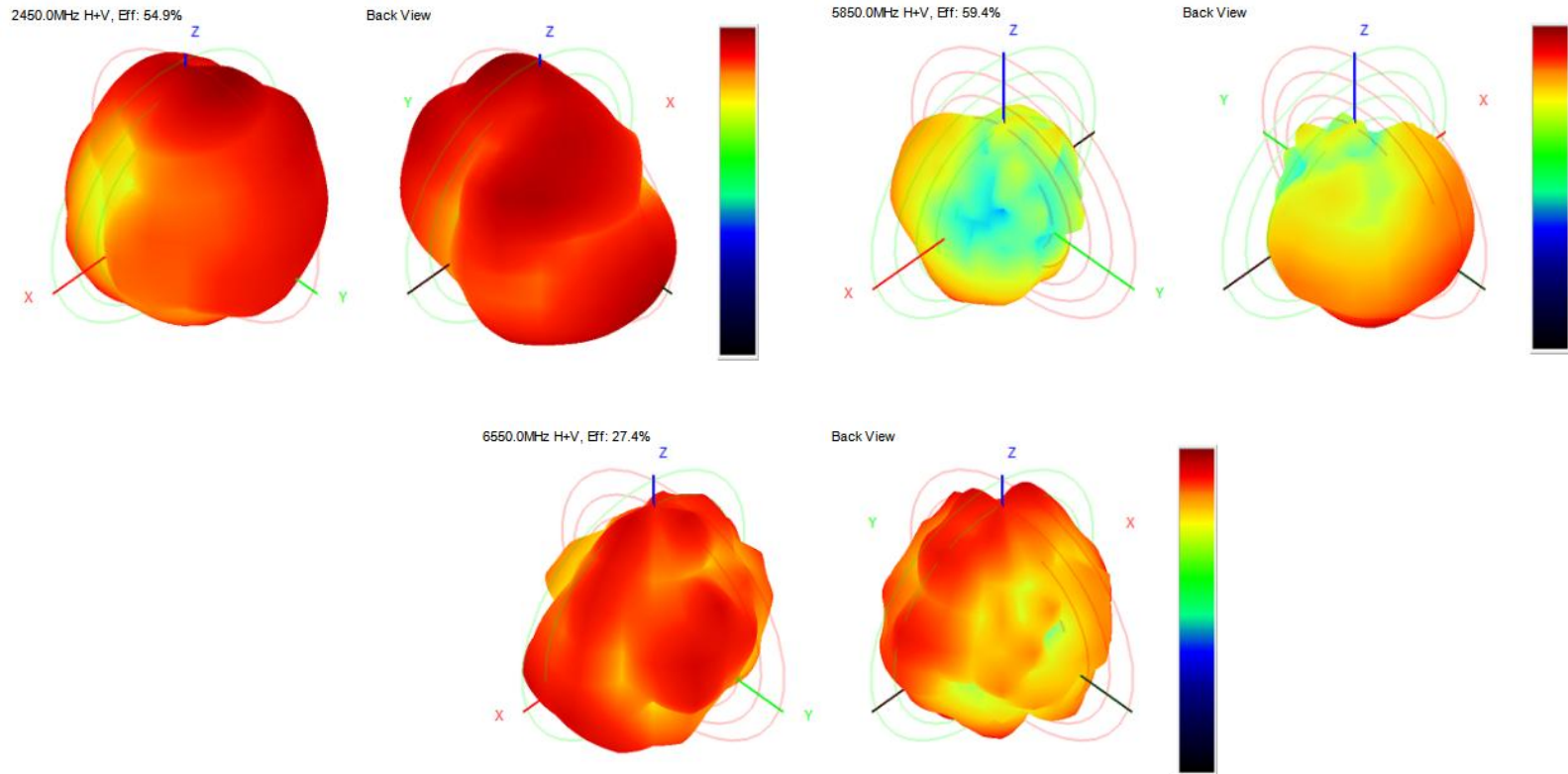
2. Test Result

2.3 WIFI (MAIN)Antenna Gain/Efficiency/3D DATA

Frequency (MHz)	Efficiency (dBi)	Gain (dBi)	Efficiency (%)	Frequency (MHz)	Efficiency (dBi)	Gain (dBi)	Efficiency (%)
2400	-3.65	0.97	43.18	5750	-2.48	2.90	56.51
2410	-3.32	1.13	46.54	5850	-2.26	2.99	59.37
2420	-2.59	1.90	55.03	6050	-2.65	2.94	54.23
2430	-2.64	1.90	54.47	6150	-3.14	2.56	48.46
2440	-2.43	2.17	57.1	6250	-3.56	2.97	43.97
2450	-2.61	2.07	54.89	6350	-4.21	2.63	37.91
2460	-2.41	2.60	57.37	6450	-4.88	2.13	32.44
2470	-2.8	2.33	52.47	6550	-5.62	2.78	27.42
2480	-2.82	2.53	52.18	6650	-5.71	2.68	26.87
2490	-2.78	2.69	52.7	6750	-6.15	2.05	24.25
2500	-2.96	2.52	50.57	6850	-5.5	2.36	28.19
5150	-3.2	2.82	47.85	6950	-5.51	2.28	28.13
5350	-3.01	2.83	49.95	7050	-5.24	2.17	29.94
5550	-2.83	2.34	52.07	7150	-5.59	2.14	27.58

2. Test Result

2.3 WIFI (MAIN)Antenna Gain/Efficiency/3D DATA



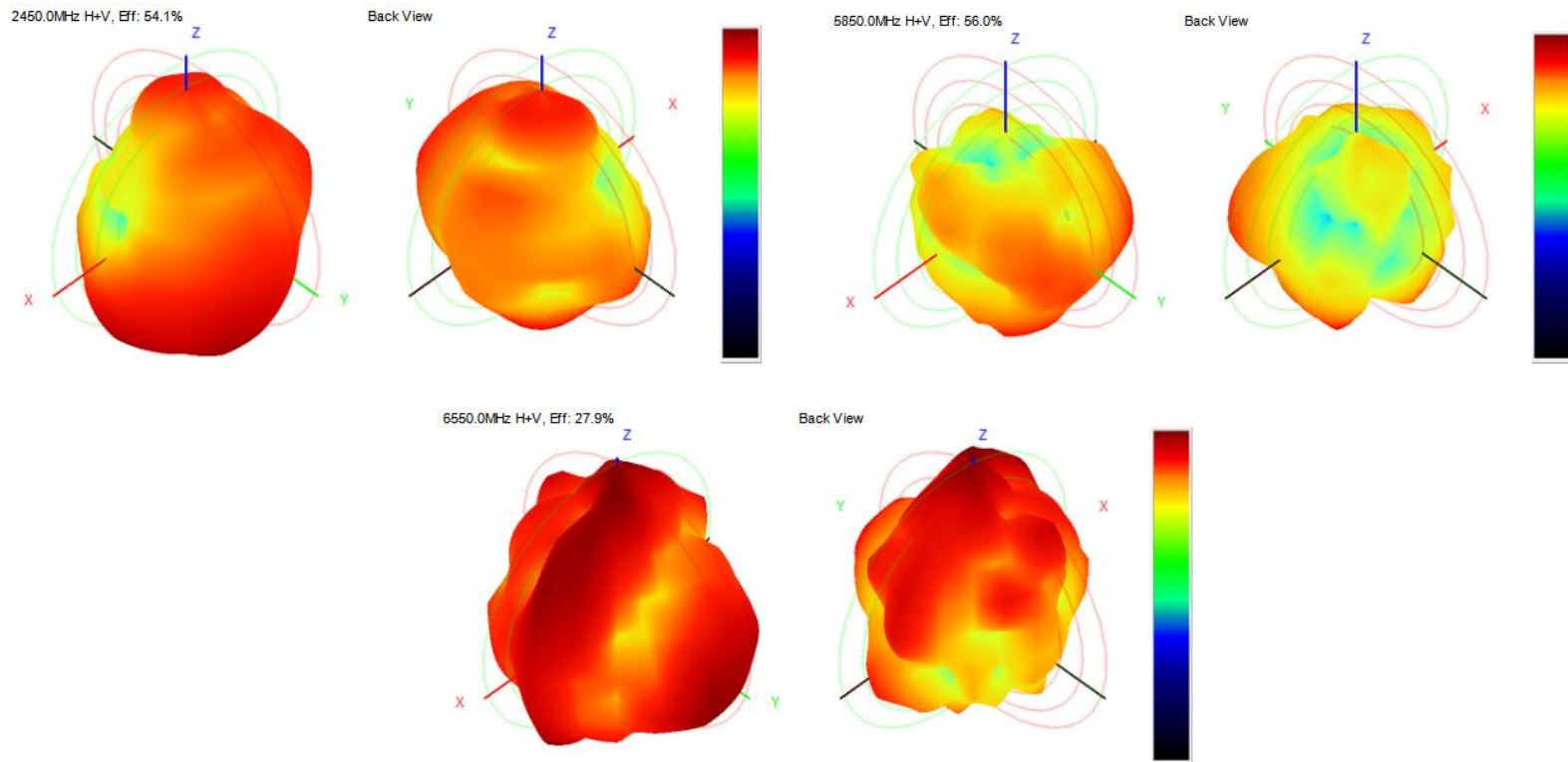
2. Test Result

2.3 WIFI(AUX) Antenna Gain/Efficiency/3D DATA

Frequency (MHz)	Efficiency (dBi)	Gain (dBi)	Efficiency (%)	Frequency (MHz)	Efficiency (dBi)	Gain (dBi)	Efficiency (%)
2400	-2.66	2.32	54.19	5750	-2.41	2.52	57.42
2410	-2.67	2.44	54.02	5850	-2.52	2.69	55.99
2420	-2.39	2.92	57.68	6050	-3.04	2.13	49.59
2430	-2.48	2.65	56.53	6150	-3.63	2.31	43.33
2440	-2.5	2.85	56.23	6250	-4.43	2.73	36.02
2450	-2.67	2.64	54.11	6350	-4.95	2.13	32.01
2460	-2.4	2.23	57.58	6450	-5.34	2.31	29.21
2470	-2.8	3.00	52.42	6550	-5.55	2.00	27.87
2480	-2.74	2.71	53.22	6650	-5.54	2.22	27.93
2490	-2.64	2.43	54.43	6750	-5.28	2.39	29.66
2500	-2.75	2.19	53.05	6850	-4.79	2.58	33.16
5150	-3.89	1.35	40.85	6950	-5.2	2.23	30.19
5350	-3.79	1.44	41.76	7050	-5.3	2.04	29.52
5550	-3.08	2.38	49.22	7150	-5.86	2.28	25.96

2. Test Result

2.3 WIFI(AUX) Antenna Gain/Efficiency/3D DATA



2. Test Result

2.4 WIFI Active Test

WIFI Active testing			
Frequency	1	6	11
B-TRP-11Mbps	11.32	12.36	11.78
B-TIS-11Mbps	-80.42	-81.7	-80.68
G-TRP-54Mbps	11.65	13.12	13.36
G-TIS-54Mbps	-67.6	-68.23	-68.48
N-TRP-MCS7	11.62	13.53	13.83
N-TIS-MCS7	-65.81	-66.11	-65.42
Frequency	36	149	165
A-TRP-54Mbps	11.49	13.47	13.51
A-TIS-54Mbps	-71.17	-72.09	-72.69

3. Conclusions

Thank you