



Annex E System validation and testing results of WIFI6E

Tested Model : AE10

Report Number:

WSCT-A2LA-R&E240300009A-SAR

System Performance Check Report

Summary

Dipole	Frequency [MHz]	TSL	Power [dBm]	Dev. 1g [%]	Dev. 10g [%]	Dev. Peak [%]	Iso. Error [%]
D6.5GHzV2 - SN1096	6500.0	HSL	20.0	2.8	4.3	-5.9	1.7

Exposure Conditions

Phantom Section, TSL	Test Distance [mm]	Band	Group, UID	Frequency [MHz], Channel Number	Conversion Factor	TSL Conductivity [S/m]	TSL Permittivity
Flat, HSL	5		CW, 0--	6500.000, 0	4.91	6.21	34.3

Hardware Setup

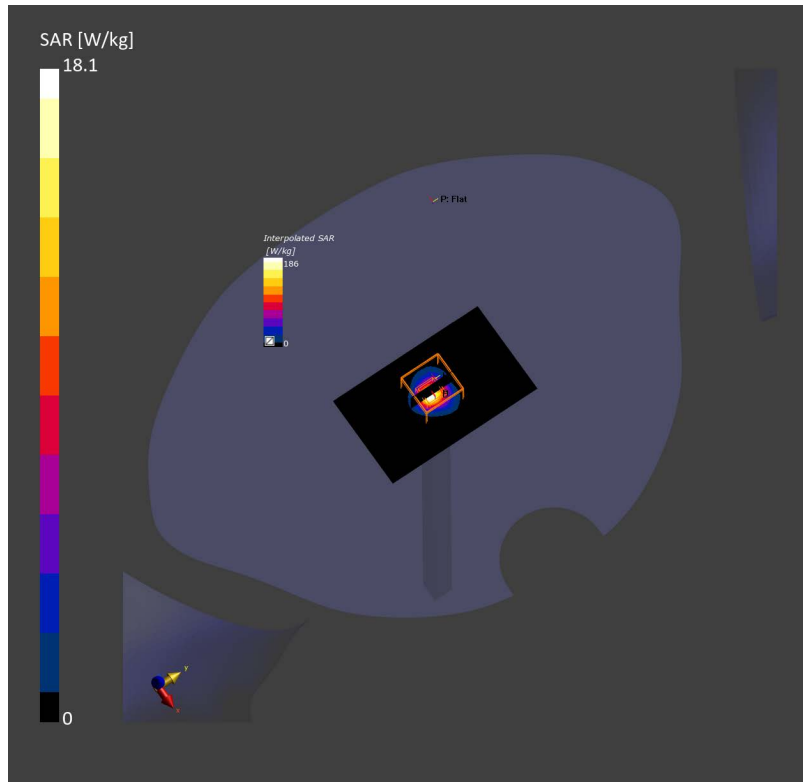
Phantom	TSL, Measured Date	Probe, Calibration Date	DAE, Calibration Date
Twin-SAM V8.0 (30deg probe tilt) - 2168	HSL6.5GHz Charge:xxxx, 2024-Jun-26	EX3DV4 - SN7858, 2024-01-09	DAE4ip Sn1846, 2023-11-29

Scans Setup

	Area Scan	Zoom Scan
Grid Extents [mm]	51.0 x 85.0	22.0 x 22.0 x 22.0
Grid Steps [mm]	8.5 x 8.5	3.4 x 3.4 x 1.4
Sensor Surface [mm]	3.0	1.4
Graded Grid	N/A	Yes
Grading Ratio	N/A	1.4
MAIA	N/A	N/A
Surface Detection	All points	All points
Scan Method	Measured	Measured

Measurement Results

	Area Scan	Zoom Scan
Date	2024-06-26, 15:23	2024-06-26, 15:37
psSAR1g [W/Kg]	26.0	29.7
psSAR10g [W/Kg]	5.11	5.58
Power Drift [dB]	-0.01	-0.13
Power Scaling	Disabled	Disabled
Scaling Factor [dB]		
TSL Correction	No correction	No correction



Test Laboratory: TOWE Lab

Measurement Report for AE10, CHEEK, U-NII-5, IEEE 802.11ax (160MHz, MCS0), Channel 15 (6025.000 MHz)

Device Under Test Properties

Model, Manufacturer	Dimensions [mm]	IMEI	DUT Type
AE10,	160.0 x 72.0 x 12.0	356419650005947	Phone

Exposure Conditions

Phantom Section, TSL	Position, Test Distance [mm]	Band	Group, UID	Frequency [MHz], Channel Number	Conversion Factor	TSL Conductivity [S/m]	TSL Permittivity
LeftHead, HSL	CHEEK, 0.00	U-NII-5	WLAN, 10755-AAC	6025.000, 15	4.91	5.62	35.6

Hardware Setup

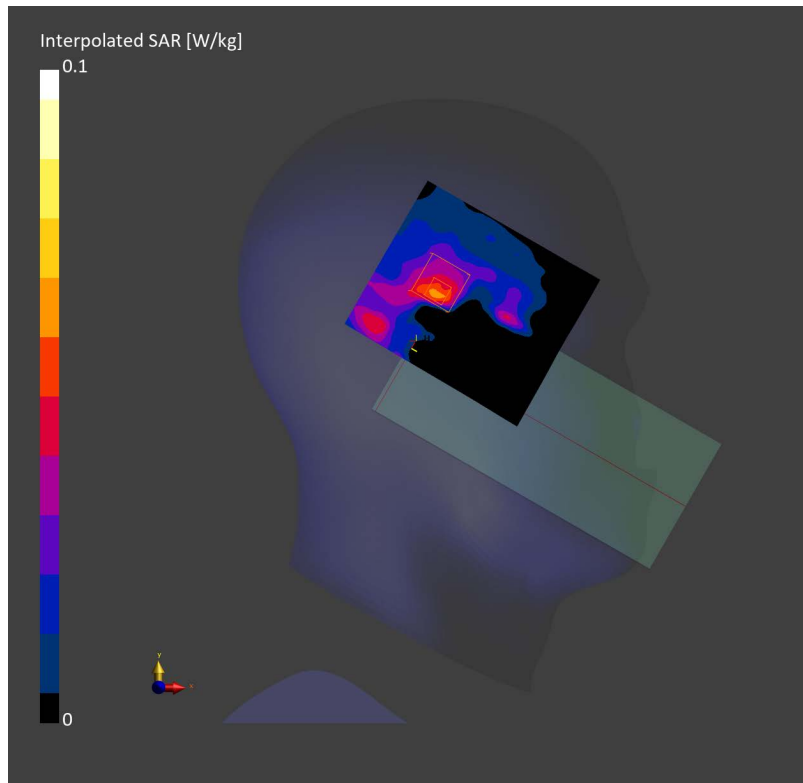
Phantom	TSL, Measured Date	Probe, Calibration Date	DAE, Calibration Date
Twin-SAM V8.0 (30deg probe tilt) - 2168	HSL6.5GHz Charge:xxxx, 2024-Jun-26	EX3DV4 - SN7858, 2024-01-09	DAE4ip Sn1846, 2023-11-29

Scans Setup

	Area Scan	Zoom Scan
Grid Extents [mm]	85.0 x 102.0	22.0 x 22.0 x 22.0
Grid Steps [mm]	8.5 x 8.5	3.4 x 3.4 x 1.4td>
Sensor Surface [mm]	3.0	1.4
Graded Grid	N/A	Yes
Grading Ratio	N/A	1.4
MAIA	Y	Y
Surface Detection	Unknown method	VMS + 6p
Scan Method	Measured	Measured

Measurement Results

	Area Scan	Zoom Scan
Date	2024-06-27, 09:26	2024-06-27, 09:45
psSAR1g [W/Kg]	0.043	0.048
psSAR10g [W/Kg]	0.016	0.019
Power Drift [dB]	-0.10	-0.06
Power Scaling	Disabled	Disabled
Scaling Factor [dB]		
TSL Correction	No correction	No correction
M2/M1 [%]		N/A
Dist 3dB Peak [mm]		4.6



Test Laboratory: TOWE Lab

Measurement Report for AE10, BACK, U-NII-6, IEEE 802.11ax (160MHz, MCS0), Channel 111 (6505.000 MHz)

Device Under Test Properties

Model, Manufacturer	Dimensions [mm]	IMEI	DUT Type
AE10,	160.0 x 72.0 x 12.0	356419650005947	Phone

Exposure Conditions

Phantom Section, TSL	Position, Test Distance [mm]	Band	Group, UID	Frequency [MHz], Channel Number	Conversion Factor	TSL Conductivity [S/m]	TSL Permittivity
Flat, HSL	BACK, 15.00	U-NII-6	WLAN, 10755-AAC	6505.000, 111	4.91	6.24	34.3

Hardware Setup

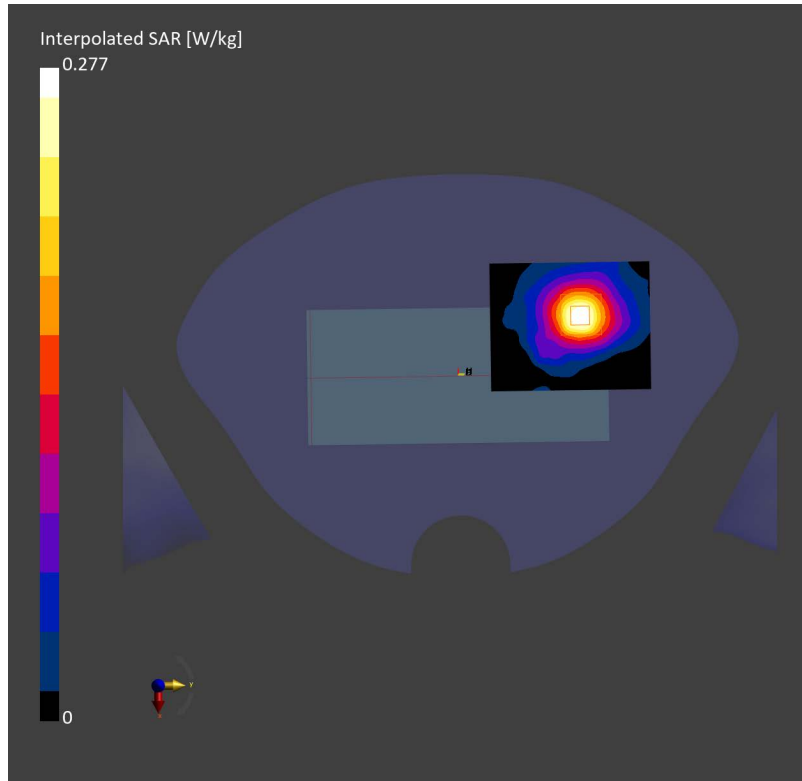
Phantom	TSL, Measured Date	Probe, Calibration Date	DAE, Calibration Date
Twin-SAM V8.0 (30deg probe tilt) - 2168	HSL6.5GHz Charge:xxxx, 2024-Jun-26	EX3DV4 - SN7858, 2024-01-09	DAE4ip Sn1846, 2023-11-29

Scans Setup

	Area Scan	Zoom Scan
Grid Extents [mm]	68.0 x 85.0	22.0 x 22.0 x 22.0
Grid Steps [mm]	8.5 x 8.5	3.4 x 3.4 x 1.4
Sensor Surface [mm]	3.0	1.4
Graded Grid	N/A	Yes
Grading Ratio	N/A	1.4
MAIA	Y	Y
Surface Detection	All points	All points
Scan Method	Measured	Measured

Measurement Results

	Area Scan	Zoom Scan
Date	2024-06-26, 20:43	2024-06-26, 20:52
psSAR1g [W/Kg]	0.223	0.224
psSAR10g [W/Kg]	0.086	0.081
Power Drift [dB]	0.08	0.00
Power Scaling	Disabled	Disabled
Scaling Factor [dB]		
TSL Correction	No correction	No correction
M2/M1 [%]		8.3
Dist 3dB Peak [mm]		14.8



Test Laboratory: TOWE Lab

Measurement Report for AE10, BACK, U-NII-6, IEEE 802.11ax (160MHz, MCS0), Channel 111 (6505.000 MHz)

Device Under Test Properties

Model, Manufacturer	Dimensions [mm]	IMEI	DUT Type
AE10,	160.0 x 72.0 x 12.0	356419650005947	Phone

Exposure Conditions

Phantom Section, TSL	Position, Test Distance [mm]	Band	Group, UID	Frequency [MHz], Channel Number	Conversion Factor	TSL Conductivity [S/m]	TSL Permittivity
Flat, HSL	BACK, 0.00	U-NII-6	WLAN, 10755-AAC	6505.000, 111	4.91	6.24	34.3

Hardware Setup

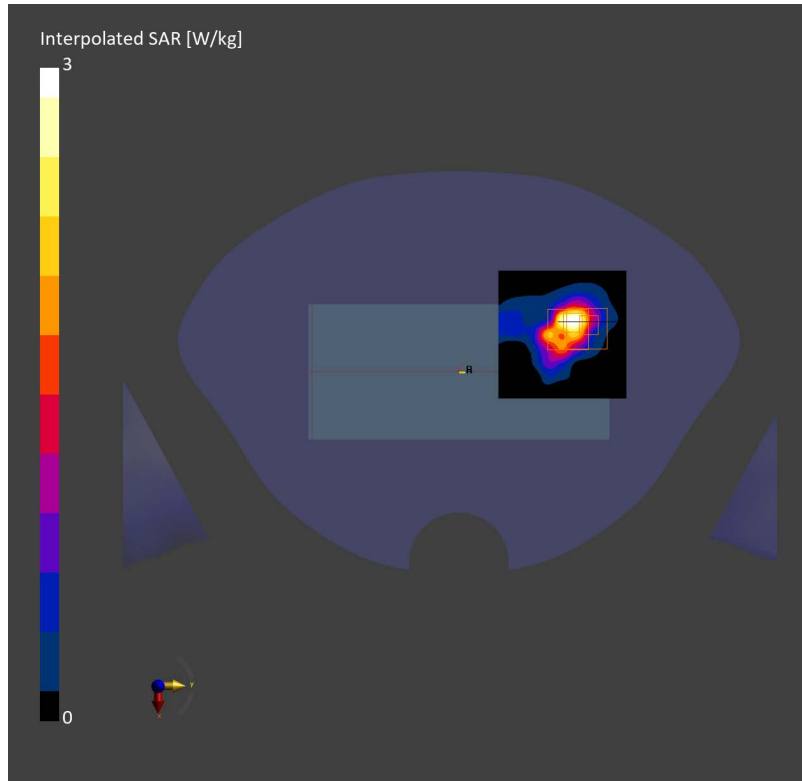
Phantom	TSL, Measured Date	Probe, Calibration Date	DAE, Calibration Date
Twin-SAM V8.0 (30deg probe tilt) - 2168	HSL6.5GHz Charge:xxxx, 2024-Jun-26	EX3DV4 - SN7858, 2024-01-09	DAE4ip Sn1846, 2023-11-29

Scans Setup

	Area Scan	Zoom Scan
Grid Extents [mm]	68.0 x 68.0	22.0 x 22.0 x 22.0
Grid Steps [mm]	8.5 x 8.5	3.4 x 3.4 x 1.4
Sensor Surface [mm]	3.0	1.4
Graded Grid	N/A	Yes
Grading Ratio	N/A	1.4
MAIA	Y	N/A
Surface Detection	VMS + 6p	VMS + 6p
Scan Method	Measured	Measured

Measurement Results

	Area Scan	Zoom Scan
Date	2024-06-26, 19:50	2024-06-26, 20:04
psSAR1g [W/Kg]	0.567	0.614
psSAR10g [W/Kg]	0.189	0.186
Power Drift [dB]	0.09	-0.12
Power Scaling	Disabled	Disabled
Scaling Factor [dB]		
TSL Correction	No correction	No correction
M2/M1 [%]		9.3
Dist 3dB Peak [mm]		5.8



Test Laboratory: TOWE Lab

Measurement Report for AE10, CHEEK, U-NII-5, IEEE 802.11ax (160MHz, MCS0), Channel 15 (6025.000 MHz)

Device Under Test Properties

Model, Manufacturer	Dimensions [mm]	IMEI	DUT Type
AE10,	160.0 x 140.0 x 7.0	356419650005947	Tablet

Exposure Conditions

Phantom Section, TSL	Position, Test Distance [mm]	Band	Group, UID	Frequency [MHz], Channel Number	Conversion Factor	TSL Conductivity [S/m]	TSL Permittivity
LeftHead, HSL	CHEEK, 0.00	U-NII-5	WLAN, 10755-AAC	6025.000, 15	4.91	5.62	35.6

Hardware Setup

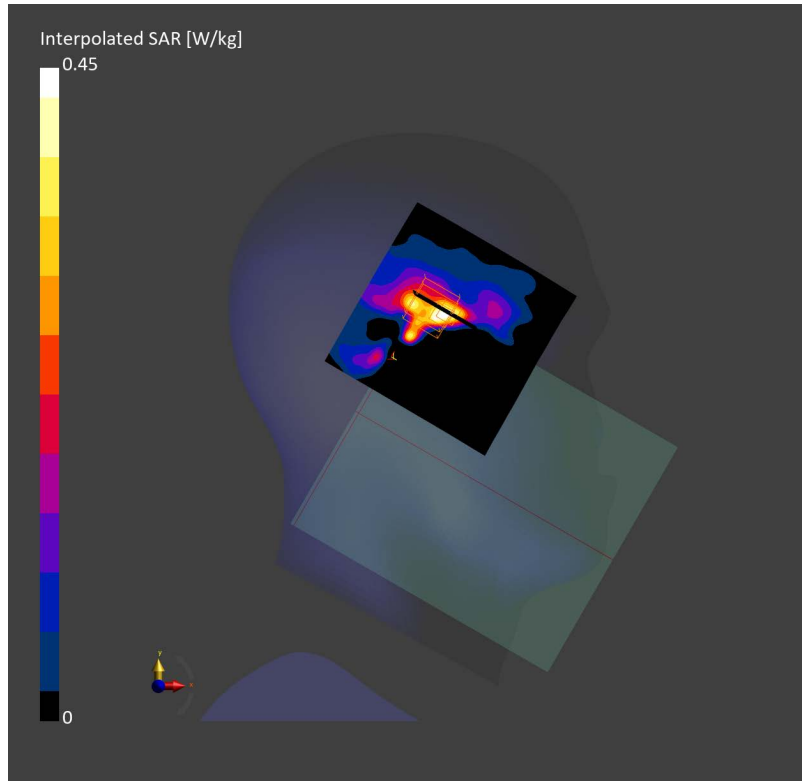
Phantom	TSL, Measured Date	Probe, Calibration Date	DAE, Calibration Date
Twin-SAM V8.0 (30deg probe tilt) - 2168	HSL6.5GHz Charge:xxxx, 2024-Jun-26	EX3DV4 - SN7858, 2024-01-09	DAE4ip Sn1846, 2023-11-29

Scans Setup

	Area Scan	Zoom Scan
Grid Extents [mm]	102.0 x 102.0	22.0 x 22.0 x 22.0
Grid Steps [mm]	8.5 x 8.5	3.4 x 3.4 x 1.4
Sensor Surface [mm]	3.0	1.4
Graded Grid	N/A	Yes
Grading Ratio	N/A	1.4
MAIA	Y	Y
Surface Detection	VMS + 6p	VMS + 6p
Scan Method	Measured	Measured

Measurement Results

	Area Scan	Zoom Scan
Date	2024-06-27, 11:22	2024-06-27, 11:32
psSAR1g [W/Kg]	0.094	0.070
psSAR10g [W/Kg]	0.033	0.019
Power Drift [dB]	-0.01	0.11
Power Scaling	Disabled	Disabled
Scaling Factor [dB]		
TSL Correction	No correction	No correction
M2/M1 [%]		18.9
Dist 3dB Peak [mm]		4.8



Test Laboratory: TOWE Lab

Measurement Report for AE10, BACK, U-NII-5, IEEE 802.11ax (160MHz, MCS0), Channel 15 (6025.000 MHz)

Device Under Test Properties

Model, Manufacturer	Dimensions [mm]	IMEI	DUT Type
AE10,	160.0 x 140.0 x 7.0	356419650005947	Tablet

Exposure Conditions

Phantom Section, TSL	Position, Test Distance [mm]	Band	Group, UID	Frequency [MHz], Channel Number	Conversion Factor	TSL Conductivity [S/m]	TSL Permittivity
Flat, HSL	BACK, 0.00	U-NII-5	WLAN, 10755-AAC	6025.000, 15	4.91	5.62	35.6

Hardware Setup

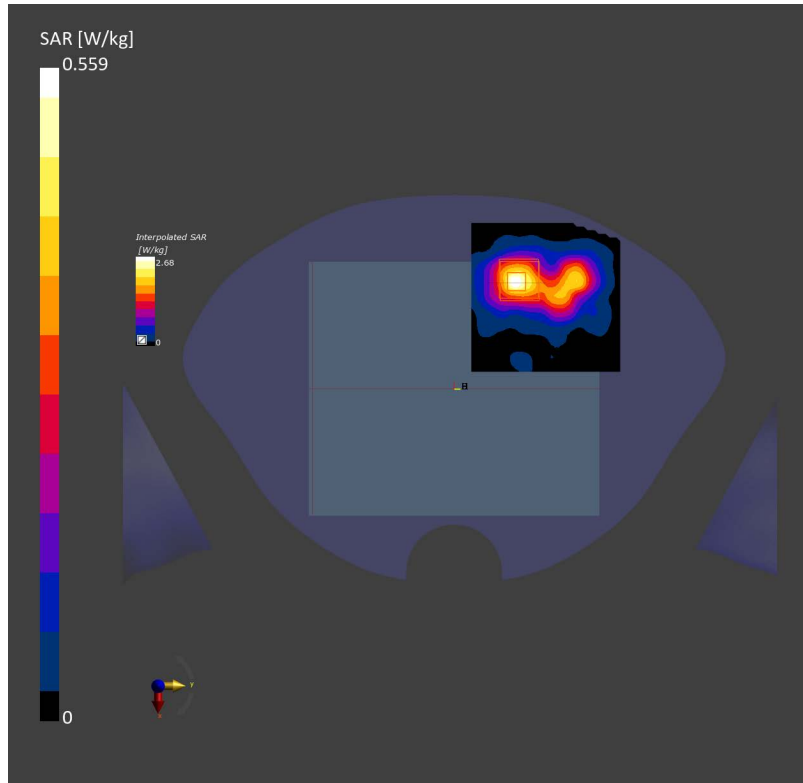
Phantom	TSL, Measured Date	Probe, Calibration Date	DAE, Calibration Date
Twin-SAM V8.0 (30deg probe tilt) - 2168	HSL6.5GHz Charge:xxxx, 2024-Jun-26	EX3DV4 - SN7858, 2024-01-09	DAE4ip Sn1846, 2023-11-29

Scans Setup

	Area Scan	Zoom Scan
Grid Extents [mm]	51.0 x 85.0	22.0 x 22.0 x 22.0
Grid Steps [mm]	8.5 x 8.5	3.4 x 3.4 x 1.4
Sensor Surface [mm]	3.0	1.4
Graded Grid	N/A	Yes
Grading Ratio	N/A	1.4
MAIA	Y	N/A
Surface Detection	VMS + 6p	All points
Scan Method	Measured	Measured

Measurement Results

	Area Scan	Zoom Scan
Date	2024-06-27, 14:26	2024-06-27, 14:40
psSAR1g [W/Kg]	0.501	0.560
psSAR10g [W/Kg]	0.185	0.180
Power Drift [dB]	-0.12	0.05
Power Scaling	Disabled	Disabled
Scaling Factor [dB]		
TSL Correction	No correction	No correction
M2/M1 [%]		10.7
Dist 3dB Peak [mm]		8.0



Device Under Test Properties

Model, Manufacturer	Dimensions [mm]	IMEI
Device,	100.0 x 100.0 x 172.0	1075

Exposure Conditions

Phantom Section	Position, Test Distance [mm]	Band	Group, UID	Frequency [MHz], Channel Number	Conversion Factor
5G	FRONT, 10.00	Validation band	CW, 0--	10000.0, 10000	1.0

Hardware Setup

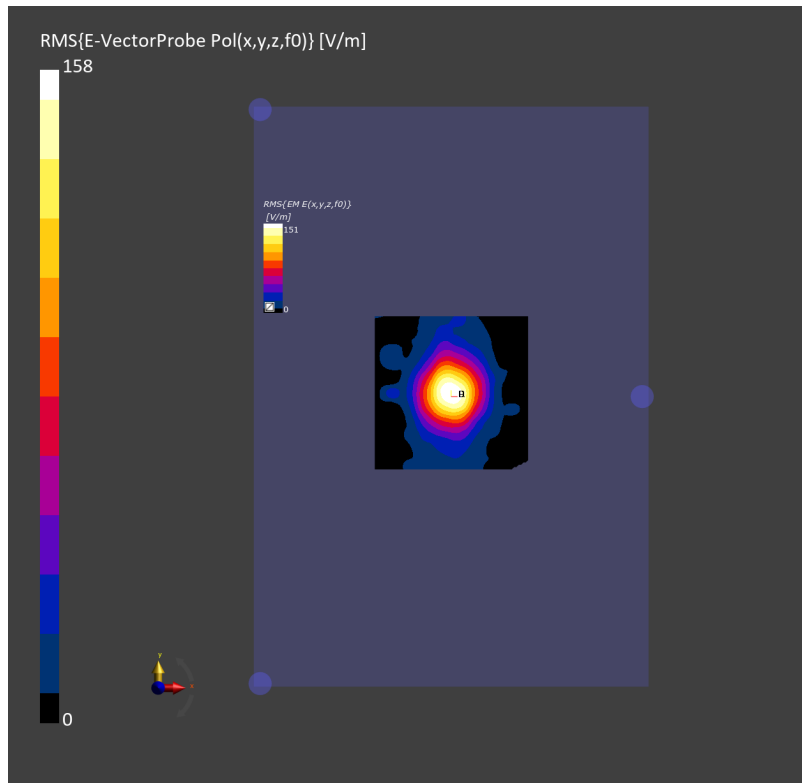
Phantom	Medium	Probe, Calibration Date	DAE, Calibration Date
mmWave - 1121	Air -	EUmmWV4 - SN9499_F1-55GHz, 2023-11-29	DAE4ip Sn1847, 2024-01-04

Scans Setup

Scan Type	5G Scan
Grid Extents [mm]	60.0 x 60.0
Grid Steps [lambda]	0.125 x 0.125
Sensor Surface [mm]	10.0
MAIA	N/A

Measurement Results

Scan Type	5G Scan
Date	2024-06-27, 11:22
Avg. Area [cm ²]	4.00
psPDn+ [W/m ²]	57.7
psPDtot+ [W/m ²]	58.0
psPDmod+ [W/m ²]	58.2
E _{max} [V/m]	151
Power Drift [dB]	0.02



Test Laboratory: TOWE Lab

Measurement Report for Device, FRONT, Validation band, CW, Channel 10000 (10000.0 MHz)

Device Under Test Properties

Model, Manufacturer	Dimensions [mm]	IMEI
Device,	100.0 x 100.0 x 172.0	1075

Exposure Conditions

Phantom Section	Position, Test Distance [mm]	Band	Group, UID	Frequency [MHz], Channel Number	Conversion Factor
5G	FRONT, 10.00	Validation band	CW, 0--	10000.0, 10000	1.0

Hardware Setup

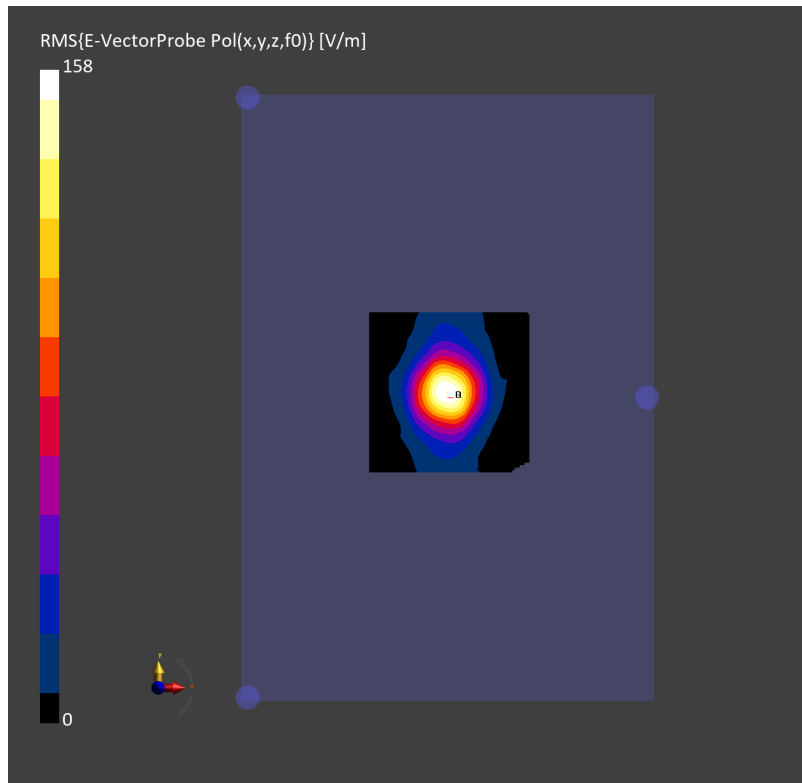
Phantom	Medium	Probe, Calibration Date	DAE, Calibration Date
mmWave - 1121	Air -	EUmmWV4 - SN9499_F1-55GHz, 2023-11-29	DAE4ip Sn1847, 2024-01-04

Scans Setup

Scan Type	5G Scan
Grid Extents [mm]	60.0 x 60.0
Grid Steps [lambda]	0.125 x 0.125
Sensor Surface [mm]	10.0
MAIA	N/A

Measurement Results

Scan Type	5G Scan
Date	2024-06-29, 08:49
Avg. Area [cm ²]	4.00
psPDn+ [W/m ²]	58.2
psPDtot+ [W/m ²]	58.6
psPDmod+ [W/m ²]	58.9
E _{max} [V/m]	153
Power Drift [dB]	0.01



Test Laboratory: TOWE Lab

Measurement Report for AE10, BACK, U-NII-5, IEEE 802.11ax (160MHz, MCS0), Channel 111 (6505.0 MHz)

Device Under Test Properties

Model, Manufacturer	Dimensions [mm]	IMEI	DUT Type
AE10,	160.0 x 72.0 x 12.0	355098470030607	Phone

Exposure Conditions

Phantom Section	Position, Test Distance [mm]	Band	Group, UID	Frequency [MHz], Channel Number	Conversion Factor
5G	BACK, 2.00	U-NII-5	WLAN, 10755-AAC	6505.0, 111	1.0

Hardware Setup

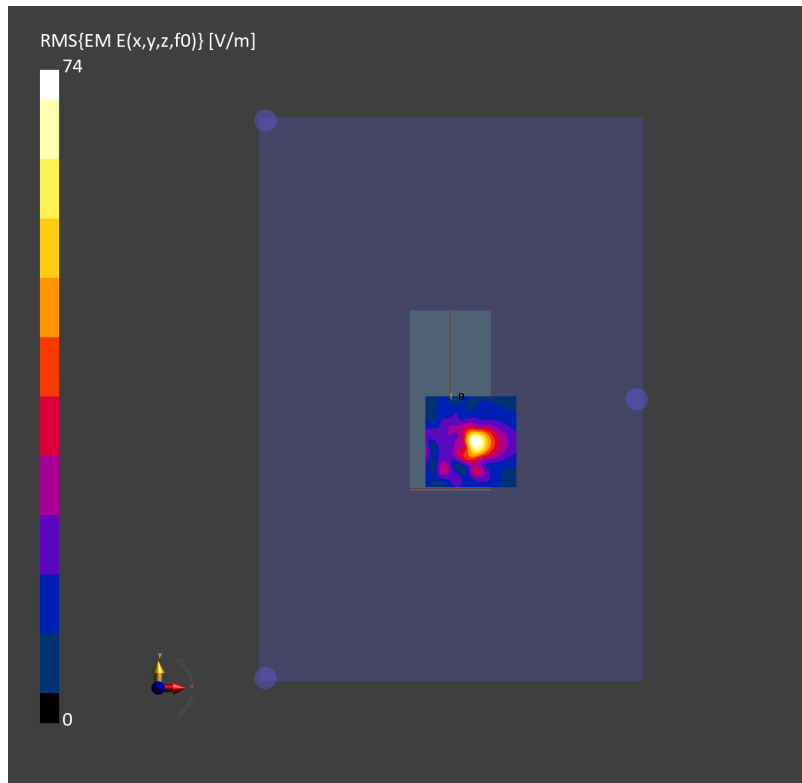
Phantom	Medium	Probe, Calibration Date	DAE, Calibration Date
mmWave - 1121	Air -	EUmmWV4 - SN9499_F1-55GHz, 2023-11-29	DAE4ip Sn1847, 2024-01-04

Scans Setup

Scan Type	5G Scan
Grid Extents [mm]	36.0 x 46.0
Grid Steps [lambda]	0.0625 x 0.0625
Sensor Surface [mm]	2.0
MAIA	Y

Measurement Results

Scan Type	5G Scan
Date	2024-06-27, 21:40
Avg. Area [cm ²]	4.00
psPDn+ [W/m ²]	5.42
psPDtot+ [W/m ²]	8.34
psPDmod+ [W/m ²]	8.79
E _{max} [V/m]	88.4
Power Drift [dB]	0.02



Test Laboratory: TOWE Lab

Measurement Report for AE10, BACK, U-NII-7, IEEE 802.11ax (160MHz, MCS0, Channel 143 (6665.0 MHz))

Device Under Test Properties

Model, Manufacturer	Dimensions [mm]	IMEI	DUT Type
AE10,	160.0 x 140.0 x 7.0	355098470030607	Phone

Exposure Conditions

Phantom Section	Position, Test Distance [mm]	Band	Group, UID	Frequency [MHz], Channel Number	Conversion Factor
5G	BACK, 2.00	U-NII-7	WLAN, 10755-AAC	6665.0, 143	1.0

Hardware Setup

Phantom	Medium	Probe, Calibration Date	DAE, Calibration Date
mmWave - 1121	Air -	EUmmWV4 - SN9499_F1-55GHz, 2023-11-29	DAE4ip Sn1847, 2024-01-04

Scans Setup

Scan Type	5G Scan
Grid Extents [mm]	60.0 x 60.0
Grid Steps [lambda]	0.0625 x 0.0625
Sensor Surface [mm]	2.0
MAIA	Y

Measurement Results

Scan Type	5G Scan
Date	2024-06-29, 17:10
Avg. Area [cm ²]	4.00
psPDn+ [W/m ²]	4.19
psPDtot+ [W/m ²]	8.67
psPDmod+ [W/m ²]	14.6
E _{max} [V/m]	98.3
Power Drift [dB]	-0.02

