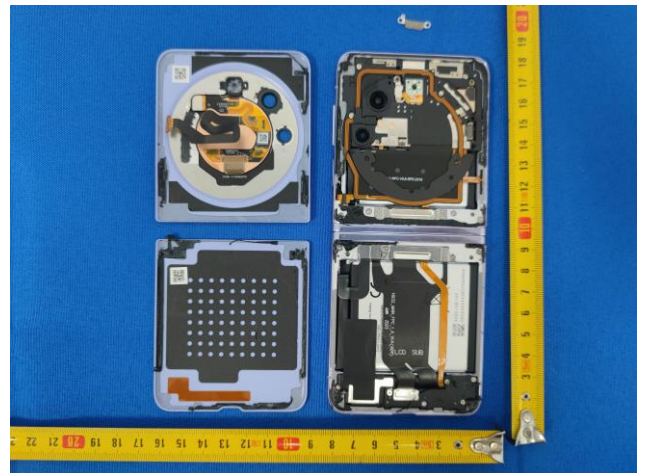
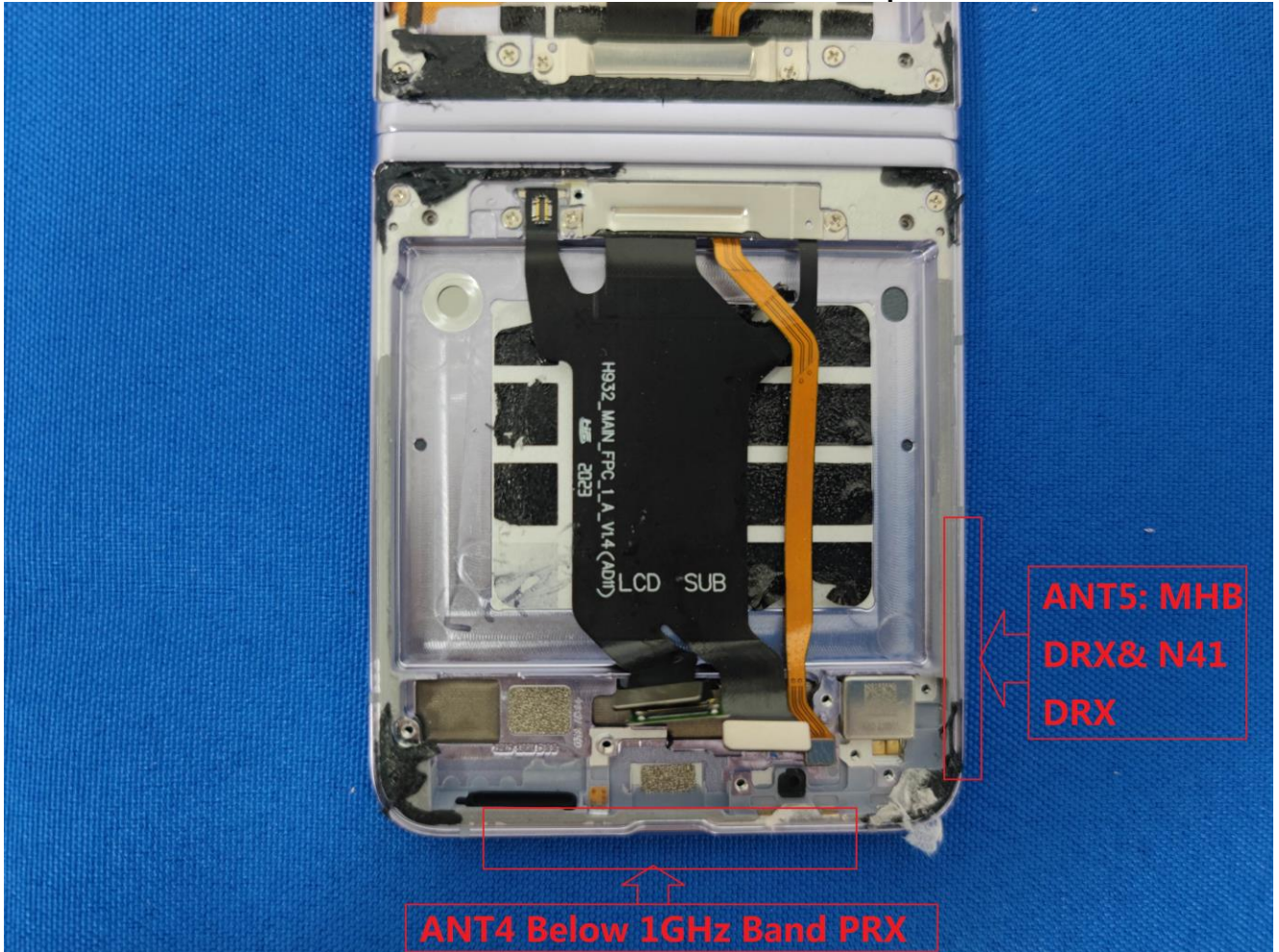


EUT Photos (Model: AD11)

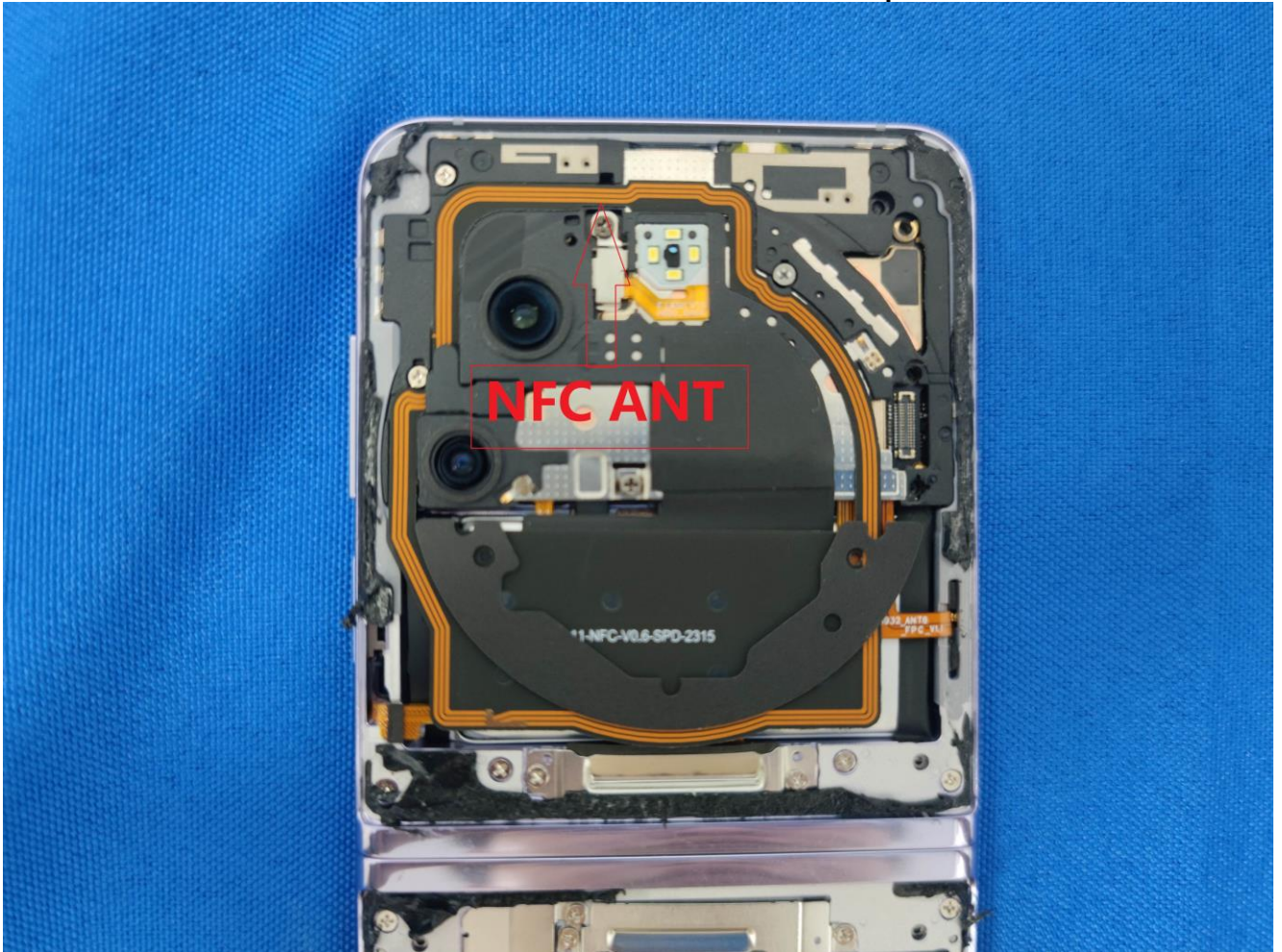


EUT Antenna Locations



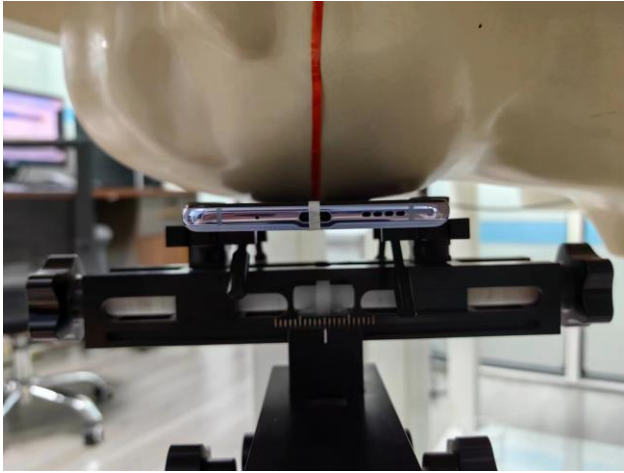




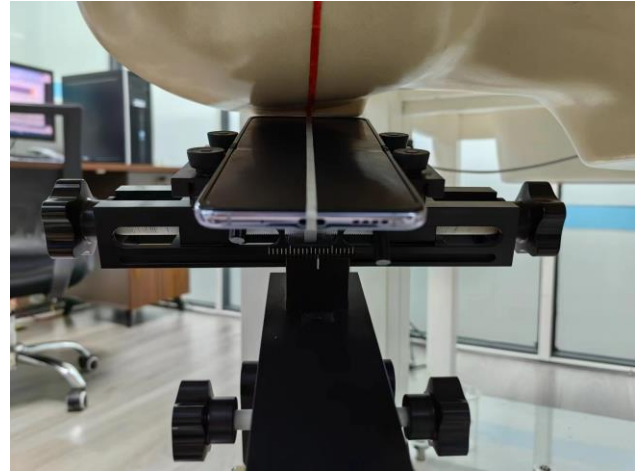


SAR Test Setup Photos

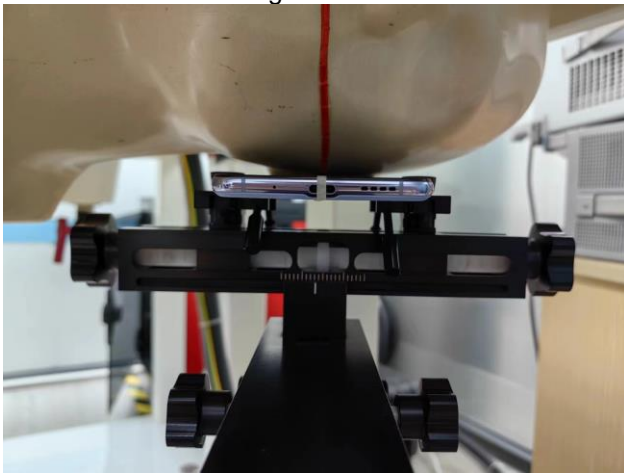
Head



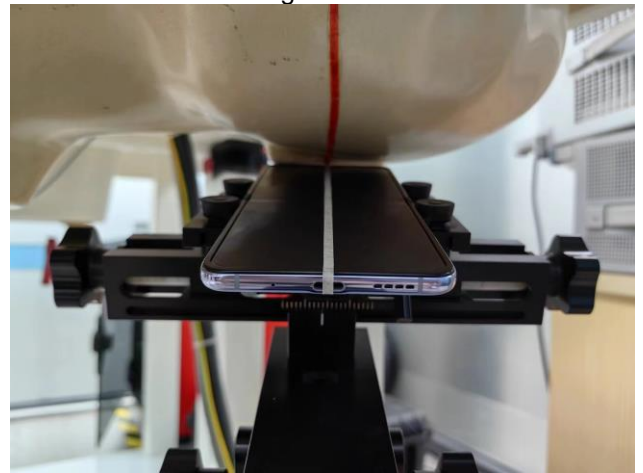
Right Cheek



Right Tilted



Left Cheek

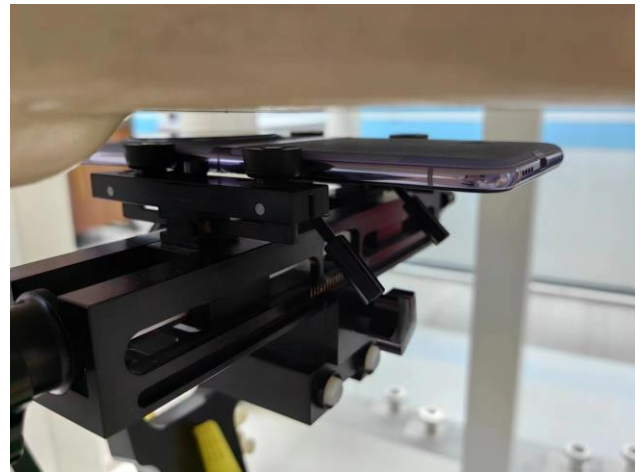


Left Tilted

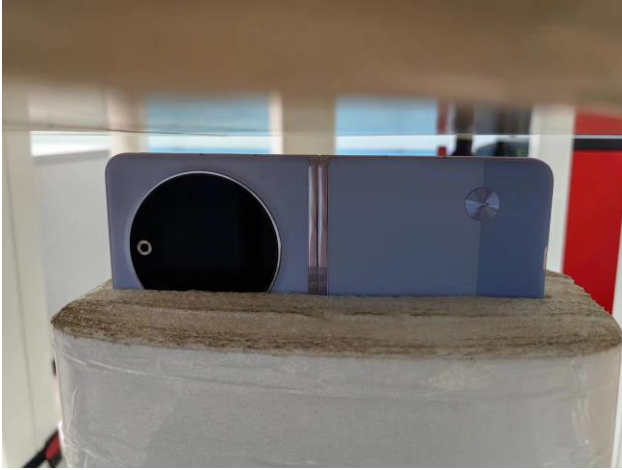
Body Open Mode



Front side (10mm)



Back side(10mm)



Left side(10mm)



Right side(10mm)

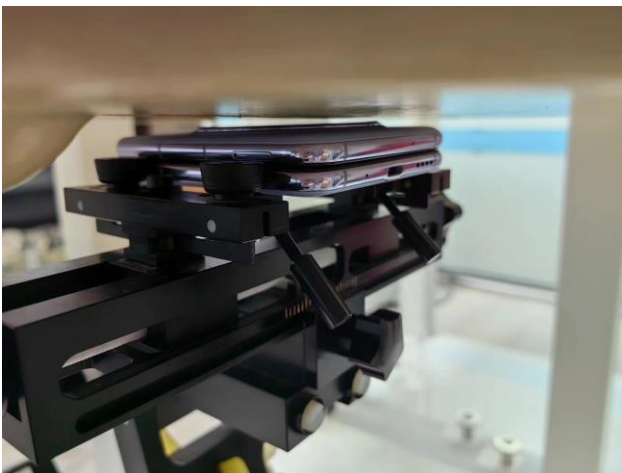


Top side(10mm)



Bottom side(10mm)

Body Closed Mode



Front side (5mm)



Back side(5mm)



Left side(5mm)



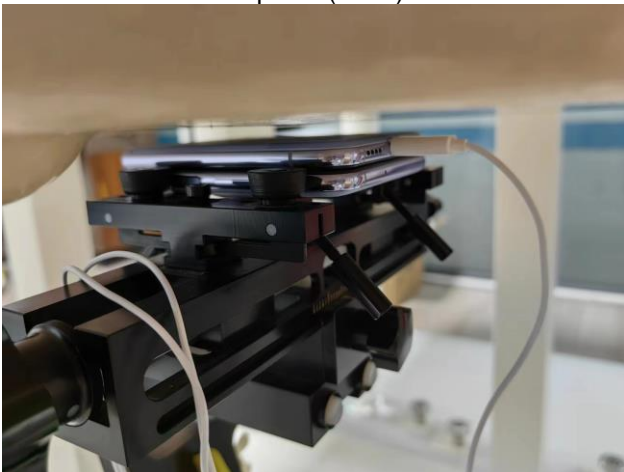
Right side(5mm)



Top side(5mm)



Bottom side(5mm)



Back side with headset(5mm)

EUT holder Perturbation Evaluation Test Setup Photos



DUT with device holder (DUT direct contact with the phantom)



DUT without device holder (DUT direct contact with the phantom)