

JUMPER

User Manual

Mini TENS Therapy Device

Model: JPD-ES100

Please read the User Manual carefully before using the product

Preparation date: 2017-09 Version: A/0

Regulatory Conformance (RED)

Hereby, Shenzhen Jumper Medical Equipment Co., Ltd declares that the radio equipment type JPD-ES100 is in compliance with Directive 2014/53/EU.

The full text of the EU declaration of conformity is available at the following website:

www.jumper-medical.com



RF Exposure Information and Statement :

This equipment complies with FCC RF radiation exposure limits set forth for an uncontrolled environment.

This device complies with part 15 of the FCC rules Operation is subject to the following two conditions: (1) this device may not cause harmful interference, and (2) this device must accept any interference received, including interference that may cause undesired operation.

NOTE: The manufacturer is not responsible for any radio or TV interference caused by unauthorized modifications to this equipment. Such modifications could void the user's authority to operate the equipment.

NOTE: This equipment has been tested and found to comply with the limits for a Class B digital device, pursuant to part 15 of the FCC Rules. These limits are designed to provide reasonable protection against harmful interference in a residential installation. This equipment generates uses and can radiate radio frequency energy and, if not installed and used in accordance with the instructions, may cause harmful interference to radio communications. However, there is no guarantee that interference will not occur in a particular installation. If this equipment does cause harmful interference to radio or television

reception, which can be determined by turning the equipment off and on, the user is encouraged to try to correct the interference by one or more of the following measures:

- Reorient or relocate the receiving antenna.
- Increase the separation between the equipment and receiver.
- Connect the equipment into an outlet on a circuit different from that to which the receiver is connected.
- Consult the dealer or an experienced radio/TV technician for help
- This device and its antenna(s) must not be co-located or operating in conjunction with any other antenna or transmitter.

Product Appearance

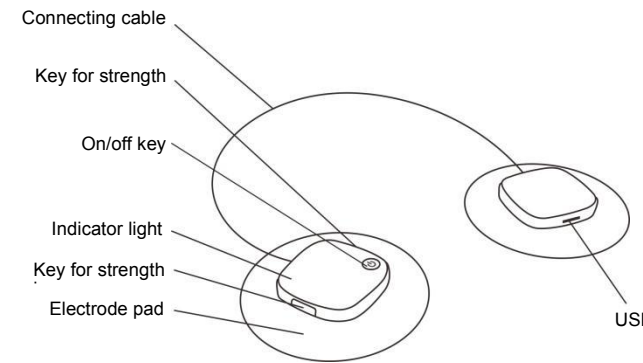


Fig.1: Product Appearance

Host:



Fig. 2: Front of Host

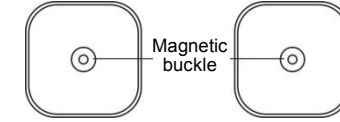


Fig. 3: Rear of Host

Accessories:

- ① Adhesive electrode pad (φ60mm and φ90mm, two each)
- ② USB cable



Package Content:

Mini TENS Therapy Device ×1 Small electrode pad ×2
Big electrode pad ×2 USB cable ×1
User Manual ×1

Product Introduction:

Mini TENS Therapy Device can concentrate and diffuse the power spectrum energy transiently according to certain modulation characteristics to simulate the actual feeling of human back pounding, beating, massaging, manipulation, acupuncture and cupping realistically. Frequent planned use of Mini TENS Therapy Device on the meridian point can play the treatment role and the helping role to alleviate the pains. After or during work, you can also use the Mini TENS Therapy Device to massage for ease of body and mind.

Product Structure and Composition:

The product is comprised of the TENS Therapy Device host, connecting cable, self-adhesive electrode pad and USB cable.

Intended Use:

It is intended use for low-frequency electrical pulse treatment at the human acupuncture point.

Range of Application:

Applicable to aided treatment of back pain, nerve palsy, muscular soreness and other pains and Bi syndromes

Product Features

1. It has 5 treatment modes, switchable on the Mini TENS Therapy Device.
2. It is powered by lithium battery, requiring no battery replacement, convenient in charging.
3. It can adjust the treatment strength at any time.
4. It will give an alarm when electrode pad fall-off, and in that case, the treatment will be paused automatically.
5. It will power off automatically when no-operation for 5 consecutive minutes, so it is more energy-saving.
6. It is beautiful and small in the appearance, light-weight and portable.
7. It has low power alarm to remind you of charging timely.
8. It can be used by connecting with APP, easy to operate.

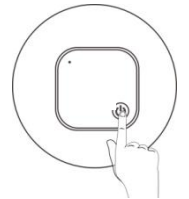
APP Download and Installation

Equipment requirement: Mobile phones of Version IOS 7 and above and of Version Android 4.3 and above. iPhone and Android users may scan the following QR code to download and install the JUMPER Health.



Bluetooth Paired Connection

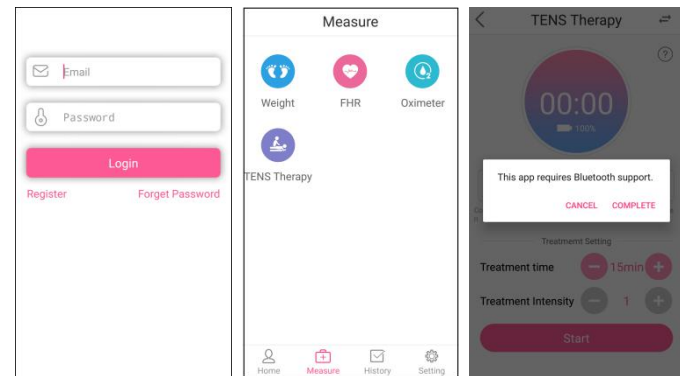
- ① Press the key for about 1s to boot (the buzzer will produce one long beep, and the green light will be on);



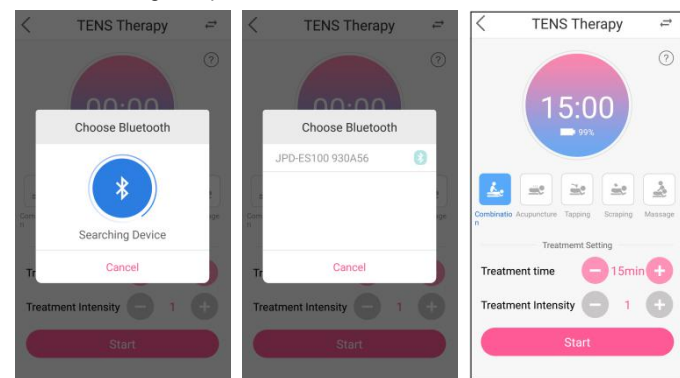
- ② Click the installed APP to enter the homepage of the program for

user registration and login.

③ Enter the main interface of the program, and click "Measure" below the interface to select the "TENS Therapy" module. You will be prompted to initiate the Bluetooth function of your phone.



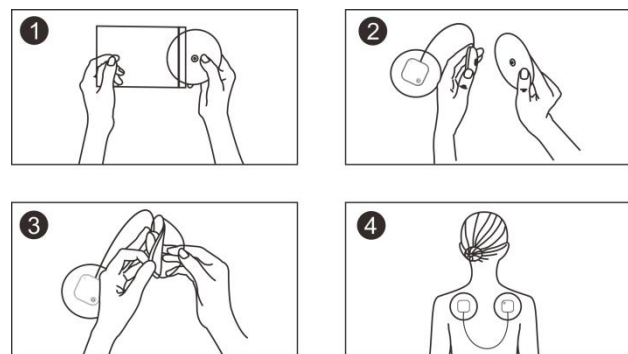
④ Search the Bluetooth to select "JPD-ES100 XXXXXX" for paired connection. Upon successful connection, the TENS Therapy Device will produce a beep. If the green indicator light is flashing slowly, it means that it is waiting for operation.



Install the TENS Therapy Device and connect it to the treatment site:

Tear the electrode pad transparent plastic bag to take out two electrode

pads. Fasten the electrode pad buckle with the magnetic buckle of Mini TENS Therapy Device, remove the electrode pad protective film, paste the adhesive surface on the treatment site, e.g. cervical vertebra, and keep the electrode pad in tight contact with the skin; after use, paste back the protective film for later use.



Select the treatment time on the APP interface, click "Start", select the treatment mode, and slowly increase the treatment strength to the acceptable degree. If you click "Pause", the time and treatment strength cannot be set. You can adjust the treatment mode during treatment.

Selection of treatment mode

The following five treatment modes are optional on the interface.



Prompt:

- You can press the "+/-" key on the host to adjust the treatment strength, with short press of "+" to increase one strength and with short press of "-" to decrease one strength. The strength is Level 0~15 (two short beeps when the energy is the strongest or the weakest);
- The setting range of treatment time is 1~30min, and the default is 15min. At the end of treatment, Mini TENS Therapy Device will stop treatment automatically and power off. If you want to end the treatment in advance, you can press the on-off key to power off.

Attentions:

- When treatment, in case of any discomfort, please stop using the product immediately.
- When treatment, the adhesive surface of electrode pad shall be in good contact with the skin to avoid sense of piercing pain caused by loose contact.
- There will be slight sense of tingling at the treatment site during the treatment, which is resulting from coupling of instrument output current and human body, a normal circumstance.
- The user receiving the treatment for the first time might develop lowered resistance due to the tension, so the current intensity shall not be too high. It is suggested to increase the intensity slowly from 0 to 15, rather than too high at one time. The intensity shall be adjusted to the degree acceptable by the user.
- If you switch the treatment mode during treatment, the intensity will fall to zero automatically, and you should adjust the intensity again.
- Mini TENS Therapy Device cannot operate during charging. If you want to use it, please disconnect the charger.

Charging:

When the indicator light of Mini TENS Therapy Device is flashing in orange color with three short beeps, it means low power and it should be charged in a timely manner. When charging, connect one end of USB cable to the Micro-USB of Mini TENS Therapy Device correctly, and connect the other end of USB to the socket of charger for charging (you can use mobile phone charger or computer USB socket for charging). During charging, the indicator light will be normally on in orange color, and after fully charged, the indicator light will be normally on in green color.

Note: The charger must pass the safety certification, consistent with the electrical safety standards. The specification of charger must meet the voltage of DC 5V and the output current of 500mA or above.

Indicator light color status:

Indicator light	Status
Normally on in green color	Power-on or fully charged

Flashing in green color	Normal working status
Flashing in orange color	Low power
Normally on in orange color	Charging

Beeper sound pulse prompt:

Beep	Status
A long beep	Power-on or power-off
A short beep	Mode switch or strength adjustment
Two short beeps	ultimate strength prompt
3 short beeps	Low battery

Cleaning

Cleaning of host: Dip soft cloth in a small amount of neutral detergent to wipe the host and the connecting cable. Never allow the liquid to penetrate into the Instrument. Do not use gasoline or volatile liquid for cleaning.

Cleaning of electrode pad: Wipe the dirt on the electrode pad with wet cloth, or rinse with clean water. Dry in the air, and it can be used repeatedly for about 30 times.

Contraindication

Patients with skin disease, malignant tumor, allergic to electrode pad or implanted with cardiac pacemaker or other apparatuses shall not use the product. For other contraindications, please consult the doctor.

Troubleshooting

Faults	Possible reason	Troubleshooting
Unable to boot	Extremely low power	●Charge
Sense of piercing pain when treatment	Loose adhesiveness of electrode pad	●Paste the electrode pad again ●Replace the electrode pad
Electrode pad fall-off	●Skin sweat ●Ineffective electrode adhesiveness	●Wipe dry the skin sweat and paste the electrode pad again ●Replace the electrode pad
Strength inconsistency of	Poor connection between host and	●Ensure to connect the host magnetic


two electrode pads	electrode pad magnetic buckle	buckle with electrode pad
Outage during use	●Automatic power-off at the end of treatment time ●Low power	●Normal ●Charge before use
Sudden alarm during use, resulting in treatment pause	Electrode pad fall-off	Paste the electrode pad at the treatment site again

Technical Parameters:

- Operating voltage: dc.3.7V
- Built-in battery capacity: 230mAh
- Input power: 1VA
- Operating mode: Continuous operation
- Maximum output pulse energy: For the 500Ω load resistance, the energy value is no greater than 300mJ
- Pulse width: 0.110ms, error: ±30%
- Pulse frequency: 4-50Hz
- Rated load impedance: 500Ω
- Maximum output voltage peak when open circuit: ≤500V
- Treatment strength setting range: 0~15, with the control interval of
- Dimension of host (L×W×H): 44mm*44mm*13mm
- Dimension of electrode pad: circular electrode pad (small): φ60mm; circular electrode pad (big): φ90mm
- Weight: 50g
- Operating temperature : 0°C -45°C
- Radio specification

Frequency Range	Max.RF power
2402-2480MHz	-7.5 dBm

EC REP Wellkang Ltd
Suite B, 29 Harley Street, London W1G 9QR, UK

 Shenzhen Jumper Medical Equipment Co., Ltd
Address: D Building, No. 71, Xintian Road, Fuyong Street, Baoan, Shenzhen, Guangdong, China.
Tel: +86-755-26696279

