

Appendix B

LTE Cat M1 Band 13
LTE Cat M1 Band 25
LTE Cat M1 Band 26
LTE Cat M1 Band 66
LTE Cat M1 Band 85
NB-IOT Band 5
NB-IOT Band 13
NB-IOT Band 25
NB-IOT Band 66
NB-IOT Band 71
NB-IOT Band 85

Test Laboratory: TOWE Lab

Measurement Report for JPD-500D, FRONT, Band 13, LTE-FDD (SC-FDMA, 1 RB, 10 MHz, QPSK) RBPosition:Low AntennaCfg:SISO, Channel 23230 (782.000 MHz)

Device Under Test Properties

Model, Manufacturer	Dimensions [mm]	IMEI
JPD-500D,	62.0 x 38.0 x 16.0	864486065082360

Exposure Conditions

Phantom Section, TSL	Position, Test Distance [mm]	Band	Group, UID	Frequency [MHz], Channel Number	Conversion Factor	TSL Conductivity [S/m]	TSL Permittivity
Flat, HSL	FRONT, 0.00	Band 13	LTE-FDD, 10175-CAH	782.000, 23230	9.65	0.905	42.5

Hardware Setup

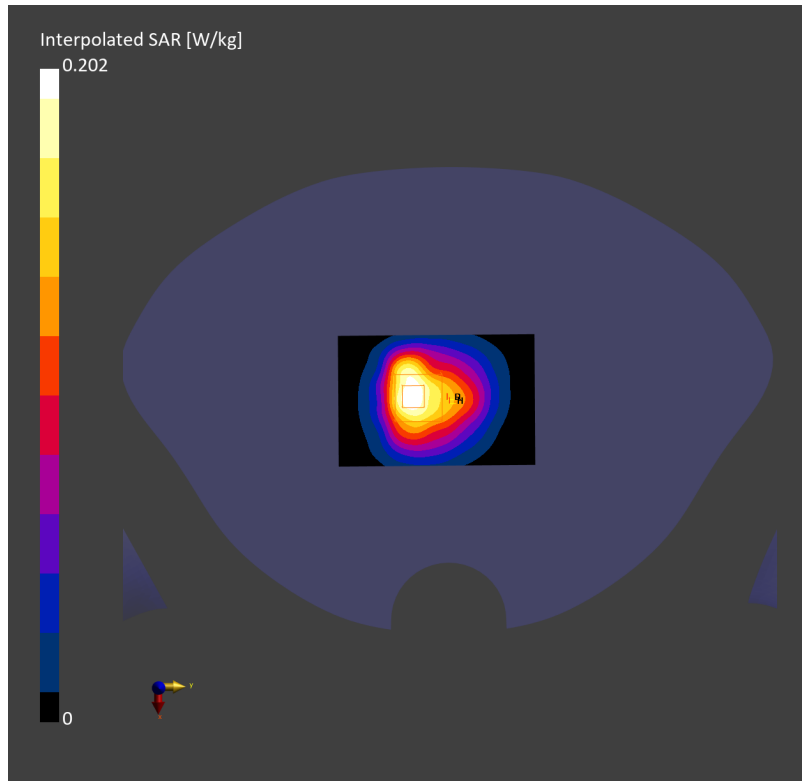
Phantom	TSL, Measured Date	Probe, Calibration Date	DAE, Calibration Date
Twin-SAM V8.0 (30deg probe tilt) - 2173	HSL750 Charge: xxxx, 2024-Jul-15	EX3DV4 - SN7812, 2024-06-25	DAE4ip Sn1847, 2024-01-04

Scans Setup

	Area Scan	Zoom Scan
Grid Extents [mm]	60.0 x 90.0	32.0 x 32.0 x 30.0
Grid Steps [mm]	15.0 x 15.0	8.0 x 8.0 x 5.0
Sensor Surface [mm]	3.0	1.4
Graded Grid	N/A	Yes
Grading Ratio	N/A	1.5
MAIA	N/A	N/A
Surface Detection	VMS + 6p	VMS + 6p
Scan Method	Measured	Measured

Measurement Results

	Area Scan	Zoom Scan
Date	2024-07-15	2024-07-15
psSAR1g [W/Kg]	0.173	0.204
psSAR10g [W/Kg]	0.108	0.101
Power Drift [dB]	0.07	-0.03
Power Scaling	Disabled	Disabled
Scaling Factor [dB]		
TSL Correction	No correction	No correction
M2/M1 [%]		23.6
Dist 3dB Peak [mm]		4.8



Test Laboratory: TOWE Lab

Measurement Report for JPD-500D, FRONT, Band 25, LTE-FDD (SC-FDMA, 1 RB, 20 MHz, QPSK) RBPosition:Low AntennaCfg:SISO, Channel 26365 (1882.500 MHz)

Device Under Test Properties

Model, Manufacturer	Dimensions [mm]	IMEI
JPD-500D,	62.0 x 38.0 x 16.0	864486065063121

Exposure Conditions

Phantom Section, TSL	Position, Test Distance [mm]	Band	Group, UID	Frequency [MHz], Channel Number	Conversion Factor	TSL Conductivity [S/m]	TSL Permittivity
Flat, HSL	FRONT, 0.00	Band 25	LTE-FDD, 10169-CAF	1882.500, 26365	7.43	1.42	40.3

Hardware Setup

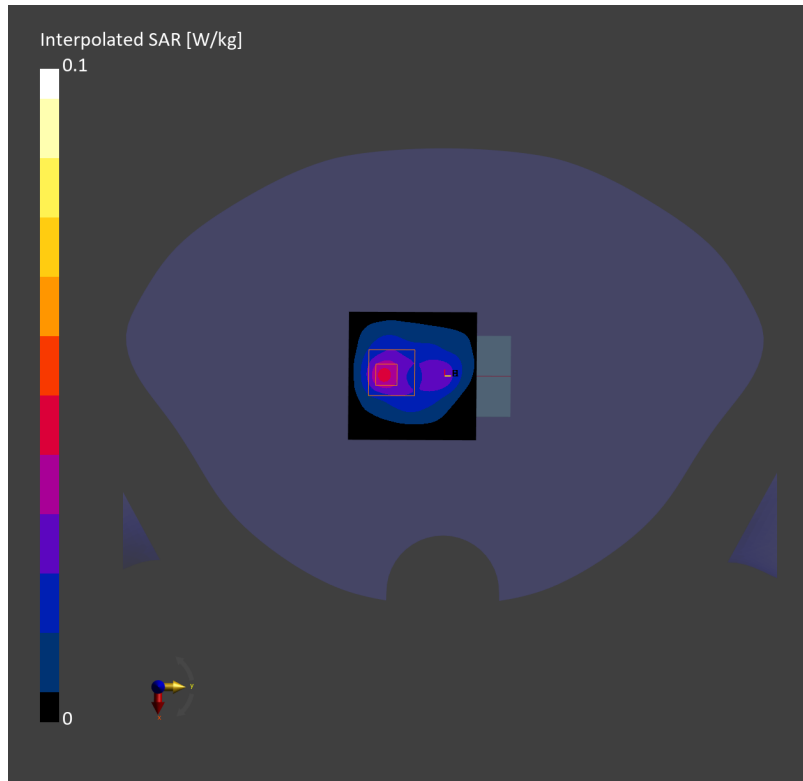
Phantom	TSL, Measured Date	Probe, Calibration Date	DAE, Calibration Date
Twin-SAM V8.0 (30deg probe tilt) - 2168	HSL1900 Charge: xxxx, 2024-Jul-15	EX3DV4 - SN7858, 2024-01-09	DAE4ip Sn1846, 2023-11-29

Scans Setup

	Area Scan	Zoom Scan
Grid Extents [mm]	60.0 x 60.0	32.0 x 32.0 x 30.0
Grid Steps [mm]	15.0 x 15.0	8.0 x 8.0 x 5.0
Sensor Surface [mm]	3.0	1.4
Graded Grid	N/A	Yes
Grading Ratio	N/A	1.5
MAIA	Y	Y
Surface Detection	All points	All points
Scan Method	Measured	Measured

Measurement Results

	Area Scan	Zoom Scan
Date	2024-07-15	2024-07-15
psSAR1g [W/Kg]	0.033	0.033
psSAR10g [W/Kg]	0.017	0.013
Power Drift [dB]	0.00	0.08
Power Scaling	Disabled	Disabled
Scaling Factor [dB]		
TSL Correction	No correction	No correction
M2/M1 [%]		34.5
Dist 3dB Peak [mm]		6.4



Test Laboratory: TOWE Lab

Measurement Report for JPD-500D, FRONT, Band 26, LTE-FDD (SC-FDMA, 1 RB, 15 MHz, QPSK) RBPosition:Low AntennaCfg:SISO, Channel 26865 (831.500 MHz)

Device Under Test Properties

Model, Manufacturer	Dimensions [mm]	IMEI
JPD-500D,	62.0 x 38.0 x 16.0	864486065082360

Exposure Conditions

Phantom Section, TSL	Position, Test Distance [mm]	Band	Group, UID	Frequency [MHz], Channel Number	Conversion Factor	TSL Conductivity [S/m]	TSL Permittivity
Flat, HSL	FRONT, 0.00	Band 26	LTE-FDD, 10181-CAF	831.500, 26865	9.35	0.896	42.1

Hardware Setup

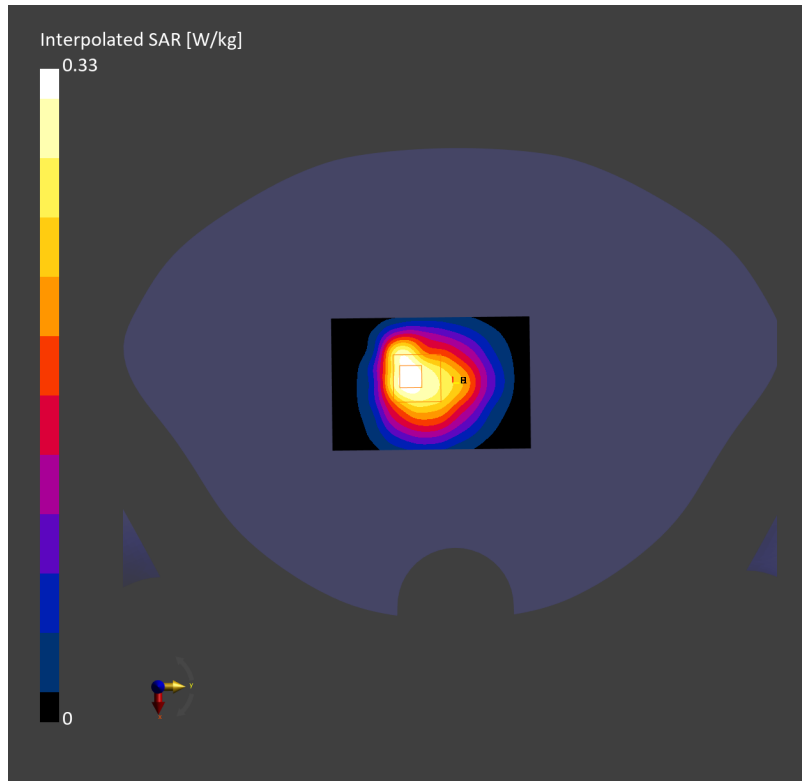
Phantom	TSL, Measured Date	Probe, Calibration Date	DAE, Calibration Date
Twin-SAM V8.0 (30deg probe tilt) - 2173	HSL750 Charge: xxxx, 2024-Jul-15	EX3DV4 - SN7812, 2024-06-25	DAE4ip Sn1847, 2024-01-04

Scans Setup

	Area Scan	Zoom Scan
Grid Extents [mm]	60.0 x 90.0	32.0 x 32.0 x 30.0
Grid Steps [mm]	15.0 x 15.0	8.0 x 8.0 x 5.0
Sensor Surface [mm]	3.0	1.4
Graded Grid	N/A	Yes
Grading Ratio	N/A	1.5
MAIA	N/A	N/A
Surface Detection	VMS + 6p	VMS + 6p
Scan Method	Measured	Measured

Measurement Results

	Area Scan	Zoom Scan
Date	2024-07-15	2024-07-15
psSAR1g [W/Kg]	0.286	0.350
psSAR10g [W/Kg]	0.182	0.179
Power Drift [dB]	0.04	0.00
Power Scaling	Disabled	Disabled
Scaling Factor [dB]		
TSL Correction	No correction	No correction
M2/M1 [%]		29.7
Dist 3dB Peak [mm]		8.0



Test Laboratory: TOWE Lab

Measurement Report for JPD-500D, FRONT, Band 66, LTE-FDD (SC-FDMA, 1 RB, 20 MHz, QPSK) RBPosition:Low AntennaCfg:SISO, Channel 132322 (1745.000 MHz)

Device Under Test Properties

Model, Manufacturer	Dimensions [mm]	IMEI
JPD-500D,	62.0 x 38.0 x 16.0	864486065063121

Exposure Conditions

Phantom Section, TSL	Position, Test Distance [mm]	Band	Group, UID	Frequency [MHz], Channel Number	Conversion Factor	TSL Conductivity [S/m]	TSL Permittivity
Flat, HSL	FRONT, 0.00	Band 66	LTE-FDD, 10297-AAE	1745.000, 132322	7.78	1.38	40.2

Hardware Setup

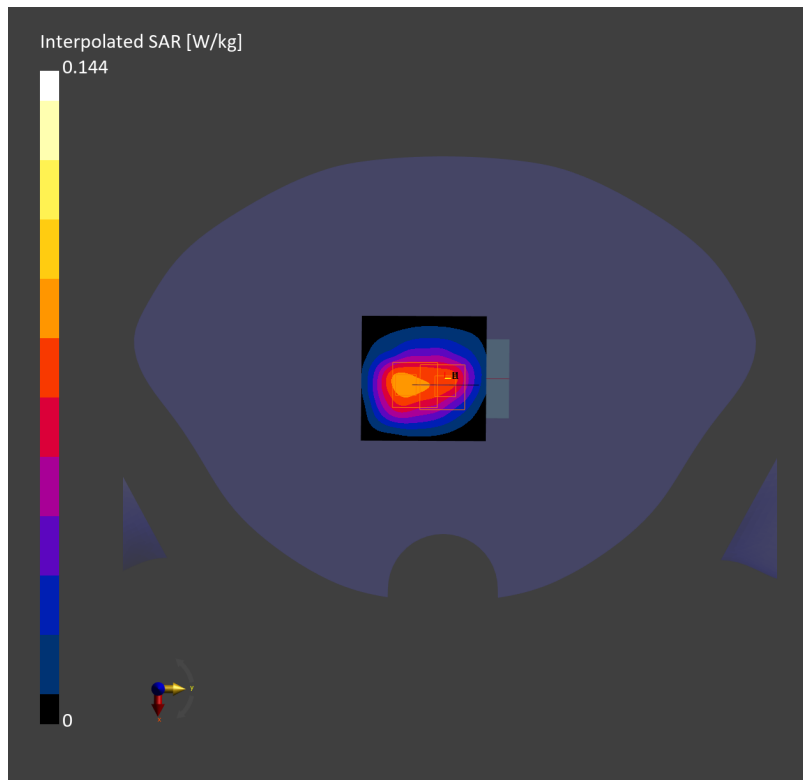
Phantom	TSL, Measured Date	Probe, Calibration Date	DAE, Calibration Date
Twin-SAM V8.0 (30deg probe tilt) - 2168	HSL1750 Charge: xxxx, 2024-Jul-15	EX3DV4 - SN7858, 2024-01-09	DAE4ip Sn1846, 2023-11-29

Scans Setup

	Area Scan	Zoom Scan
Grid Extents [mm]	60.0 x 60.0	32.0 x 32.0 x 30.0
Grid Steps [mm]	15.0 x 15.0	8.0 x 8.0 x 5.0
Sensor Surface [mm]	3.0	1.4
Graded Grid	N/A	Yes
Grading Ratio	N/A	1.5
MAIA	Y	Y
Surface Detection	All points	All points
Scan Method	Measured	Measured

Measurement Results

	Area Scan	Zoom Scan
Date	2024-07-15	2024-07-15
psSAR1g [W/Kg]	0.078	0.089
psSAR10g [W/Kg]	0.045	0.051
Power Drift [dB]	-0.05	0.09
Power Scaling	Disabled	Disabled
Scaling Factor [dB]		
TSL Correction	No correction	No correction
M2/M1 [%]		62.4
Dist 3dB Peak [mm]		14.4



Test Laboratory: TOWE Lab

Measurement Report for JPD-500D, FRONT, Band 85, LTE-FDD (SC-FDMA, 1 RB, 10 MHz, QPSK) RBPosition:Low AntennaCfg:SISO, Channel 134092 (707.000 MHz)

Device Under Test Properties

Model, Manufacturer	Dimensions [mm]	IMEI
JPD-500D,	62.0 x 38.0 x 16.0	864486065082360

Exposure Conditions

Phantom Section, TSL	Position, Test Distance [mm]	Band	Group, UID	Frequency [MHz], Channel Number	Conversion Factor	TSL Conductivity [S/m]	TSL Permittivity
Flat, HSL	FRONT, 0.00	Band 85	LTE-FDD, 10175-CAH	707.000, 134092	9.65	0.880	42.8

Hardware Setup

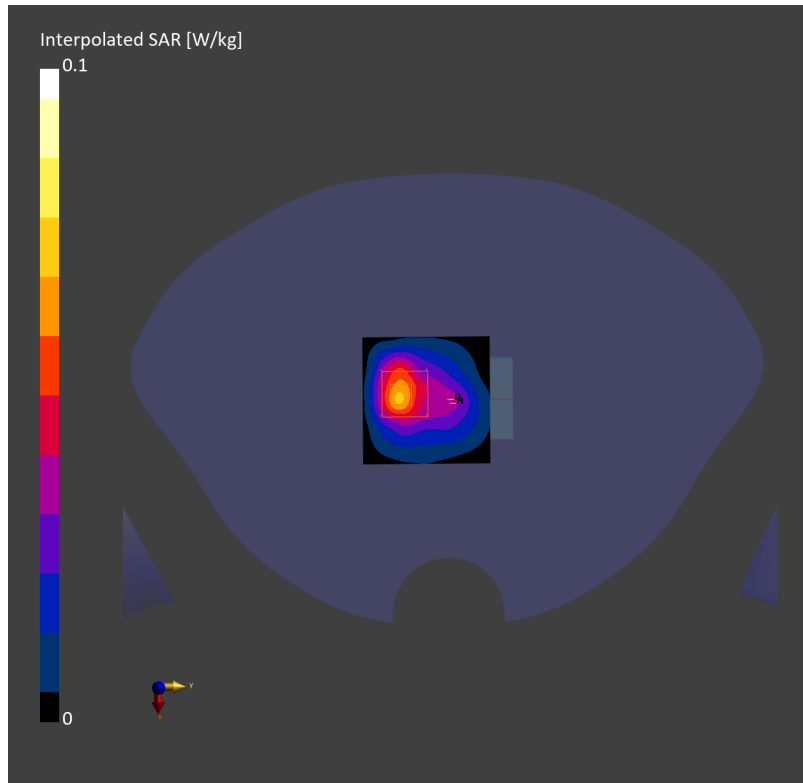
Phantom	TSL, Measured Date	Probe, Calibration Date	DAE, Calibration Date
Twin-SAM V8.0 (30deg probe tilt) - 2173	HSL750 Charge: xxxx, 2024-Jul-15	EX3DV4 - SN7812, 2024-06-25	DAE4ip Sn1847, 2024-01-04

Scans Setup

	Area Scan	Zoom Scan
Grid Extents [mm]	60.0 x 60.0	32.0 x 32.0 x 30.0
Grid Steps [mm]	15.0 x 15.0	8.0 x 8.0 x 5.0
Sensor Surface [mm]	3.0	1.4
Graded Grid	N/A	Yes
Grading Ratio	N/A	1.5
MAIA	Y	N/A
Surface Detection	VMS + 6p	VMS + 6p
Scan Method	Measured	Measured

Measurement Results

	Area Scan	Zoom Scan
Date	2024-07-15	2024-07-15
psSAR1g [W/Kg]	0.056	0.065
psSAR10g [W/Kg]	0.033	0.028
Power Drift [dB]	-0.14	0.03
Power Scaling	Disabled	Disabled
Scaling Factor [dB]		
TSL Correction	No correction	No correction
M2/M1 [%]		25.8
Dist 3dB Peak [mm]		5.1



Test Laboratory: TOWE Lab

Measurement Report for JPD-500D, FRONT, Band 5, LTE-FDD (SC-FDMA, 1 RB, 15 MHz, QPSK) RBPosition:Low AntennaCfg:SISO, Channel 20525 (836.500 MHz)

Device Under Test Properties

Model, Manufacturer	Dimensions [mm]	IMEI
JPD-500D,	62.0 x 38.0 x 16.0	864486065082360

Exposure Conditions

Phantom Section, TSL	Position, Test Distance [mm]	Band	Group, UID	Frequency [MHz], Channel Number	Conversion Factor	TSL Conductivity [S/m]	TSL Permittivity
Flat, HSL	FRONT, 0.00	Band 5	LTE-FDD, 10175-CAH	836.500, 20525	9.35	0.899	42.1

Hardware Setup

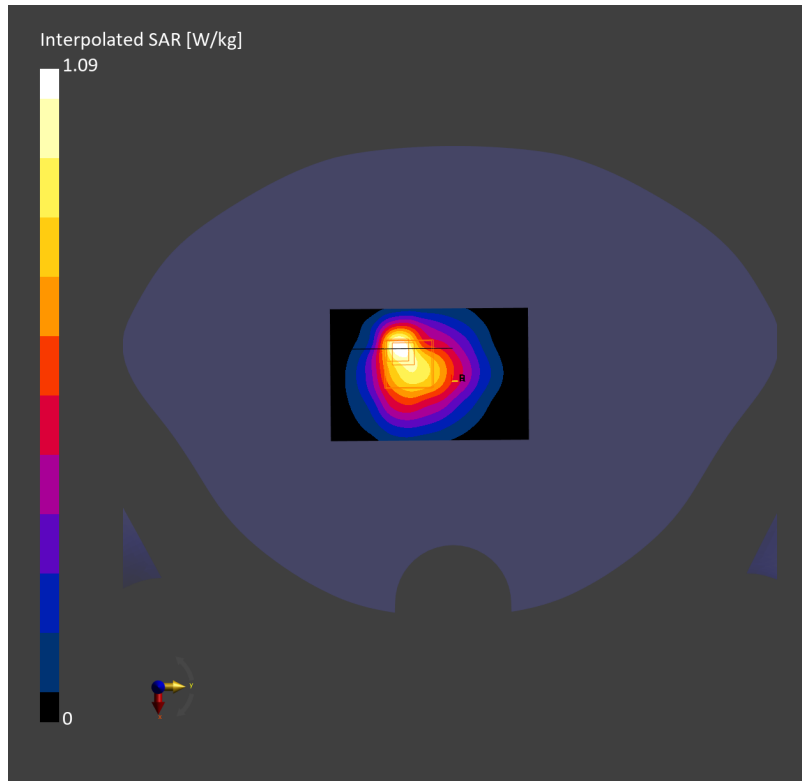
Phantom	TSL, Measured Date	Probe, Calibration Date	DAE, Calibration Date
Twin-SAM V8.0 (30deg probe tilt) - 2173	HSL835 Charge: xxxx, 2024-Jul-15	EX3DV4 - SN7812, 2024-06-25	DAE4ip Sn1847, 2024-01-04

Scans Setup

	Area Scan	Zoom Scan
Grid Extents [mm]	60.0 x 90.0	32.0 x 32.0 x 30.0
Grid Steps [mm]	15.0 x 15.0	8.0 x 8.0 x 5.0
Sensor Surface [mm]	3.0	1.4
Graded Grid	N/A	Yes
Grading Ratio	N/A	1.5
MAIA	N/A	N/A
Surface Detection	VMS + 6p	VMS + 6p
Scan Method	Measured	Measured

Measurement Results

	Area Scan	Zoom Scan
Date	2024-07-15	2024-07-15
psSAR1g [W/Kg]	0.251	0.302
psSAR10g [W/Kg]	0.155	0.139
Power Drift [dB]	-0.08	0.10
Power Scaling	Disabled	Disabled
Scaling Factor [dB]		
TSL Correction	No correction	No correction
M2/M1 [%]		21.0
Dist 3dB Peak [mm]		4.8



Test Laboratory: TOWE Lab

Measurement Report for JPD-500D, FRONT, Band 13, LTE-FDD (SC-FDMA, 1 RB, 15 MHz, QPSK) RBPosition:Low AntennaCfg:SISO, Channel 23230 (782.000 MHz)

Device Under Test Properties

Model, Manufacturer	Dimensions [mm]	IMEI
JPD-500D,	62.0 x 38.0 x 16.0	864486065082360

Exposure Conditions

Phantom Section, TSL	Position, Test Distance [mm]	Band	Group, UID	Frequency [MHz], Channel Number	Conversion Factor	TSL Conductivity [S/m]	TSL Permittivity
Flat, HSL	FRONT, 0.00	Band 13	LTE-FDD, 10175-CAH	782.000, 23230	9.65	0.905	42.5

Hardware Setup

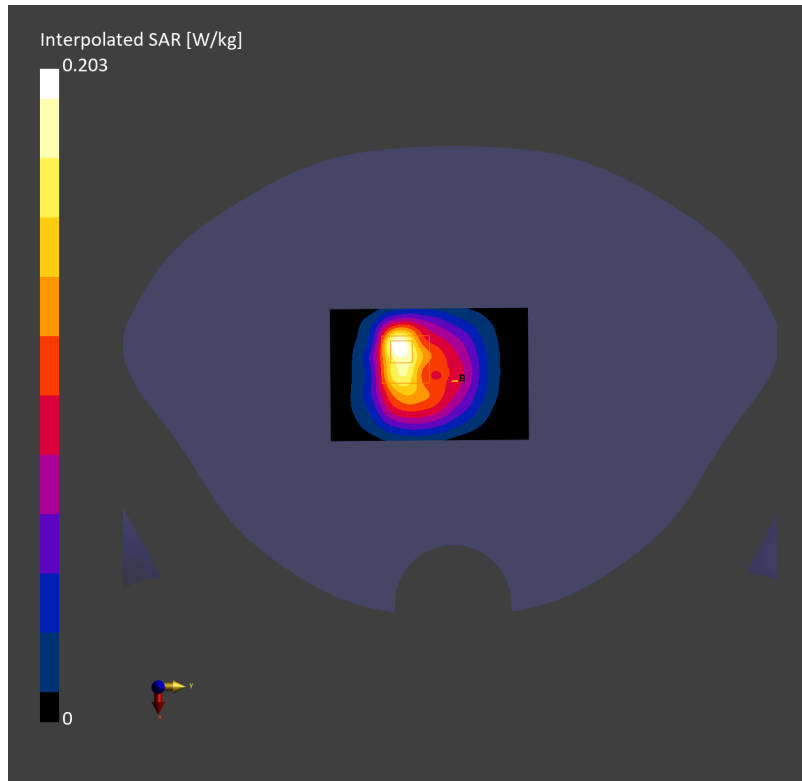
Phantom	TSL, Measured Date	Probe, Calibration Date	DAE, Calibration Date
Twin-SAM V8.0 (30deg probe tilt) - 2173	HSL750 Charge: xxxx, 2024-Jul-15	EX3DV4 - SN7812, 2024-06-25	DAE4ip Sn1847, 2024-01-04

Scans Setup

	Area Scan	Zoom Scan
Grid Extents [mm]	60.0 x 90.0	32.0 x 32.0 x 30.0
Grid Steps [mm]	15.0 x 15.0	8.0 x 8.0 x 5.0
Sensor Surface [mm]	3.0	1.4
Graded Grid	N/A	Yes
Grading Ratio	N/A	1.5
MAIA	N/A	N/A
Surface Detection	VMS + 6p	VMS + 6p
Scan Method	Measured	Measured

Measurement Results

	Area Scan	Zoom Scan
Date	2024-07-15	2024-07-15
psSAR1g [W/Kg]	0.163	0.207
psSAR10g [W/Kg]	0.097	0.103
Power Drift [dB]	0.12	-0.06
Power Scaling	Disabled	Disabled
Scaling Factor [dB]		
TSL Correction	No correction	No correction
M2/M1 [%]		27.0
Dist 3dB Peak [mm]		4.8



Test Laboratory: TOWE Lab

Measurement Report for JPD-500D, FRONT, Band 25, LTE-FDD (SC-FDMA, 1 RB, 15 MHz, QPSK) RBPosition:Low AntennaCfg:SISO, Channel 26365 (1882.500 MHz)

Device Under Test Properties

Model, Manufacturer	Dimensions [mm]	IMEI
JPD-500D,	62.0 x 38.0 x 16.0	864486065063121

Exposure Conditions

Phantom Section, TSL	Position, Test Distance [mm]	Band	Group, UID	Frequency [MHz], Channel Number	Conversion Factor	TSL Conductivity [S/m]	TSL Permittivity
Flat, HSL	FRONT, 0.00	Band 25	LTE-FDD, 10181-CAF	1882.500, 26365	7.43	1.42	40.3

Hardware Setup

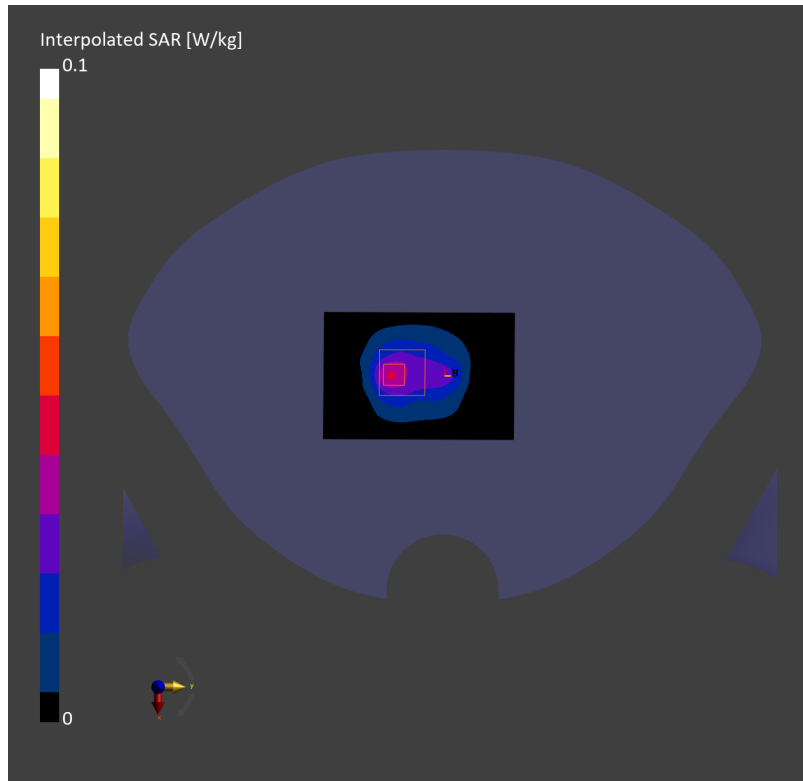
Phantom	TSL, Measured Date	Probe, Calibration Date	DAE, Calibration Date
Twin-SAM V8.0 (30deg probe tilt) - 2168	HSL1900 Charge: xxxx, 2024-Jul-15	EX3DV4 - SN7858, 2024-01-09	DAE4ip Sn1846, 2023-11-29

Scans Setup

	Area Scan	Zoom Scan
Grid Extents [mm]	60.0 x 90.0	32.0 x 32.0 x 30.0
Grid Steps [mm]	15.0 x 15.0	8.0 x 8.0 x 5.0
Sensor Surface [mm]	3.0	1.4
Graded Grid	N/A	Yes
Grading Ratio	N/A	1.5
MAIA	Y	Y
Surface Detection	All points	All points
Scan Method	Measured	Measured

Measurement Results

	Area Scan	Zoom Scan
Date	2024-07-15	2024-07-15
psSAR1g [W/Kg]	0.033	0.029
psSAR10g [W/Kg]	0.017	0.012
Power Drift [dB]	0.07	0.01
Power Scaling	Disabled	Disabled
Scaling Factor [dB]		
TSL Correction	No correction	No correction
M2/M1 [%]		26.3
Dist 3dB Peak [mm]		6.6



Test Laboratory: TOWE Lab

Measurement Report for JPD-500D, FRONT, Band 66, LTE-FDD (SC-FDMA, 1 RB, 15 MHz, QPSK) RBPosition:Low AntennaCfg:SISO, Channel 132322 (1745.000 MHz)

Device Under Test Properties

Model, Manufacturer	Dimensions [mm]	IMEI
JPD-500D,	62.0 x 38.0 x 16.0	864486065063121

Exposure Conditions

Phantom Section, TSL	Position, Test Distance [mm]	Band	Group, UID	Frequency [MHz], Channel Number	Conversion Factor	TSL Conductivity [S/m]	TSL Permittivity
Flat, HSL	FRONT, 0.00	Band 66	LTE-FDD, 10181-CAF	1745.000, 132322	7.78	1.38	40.2

Hardware Setup

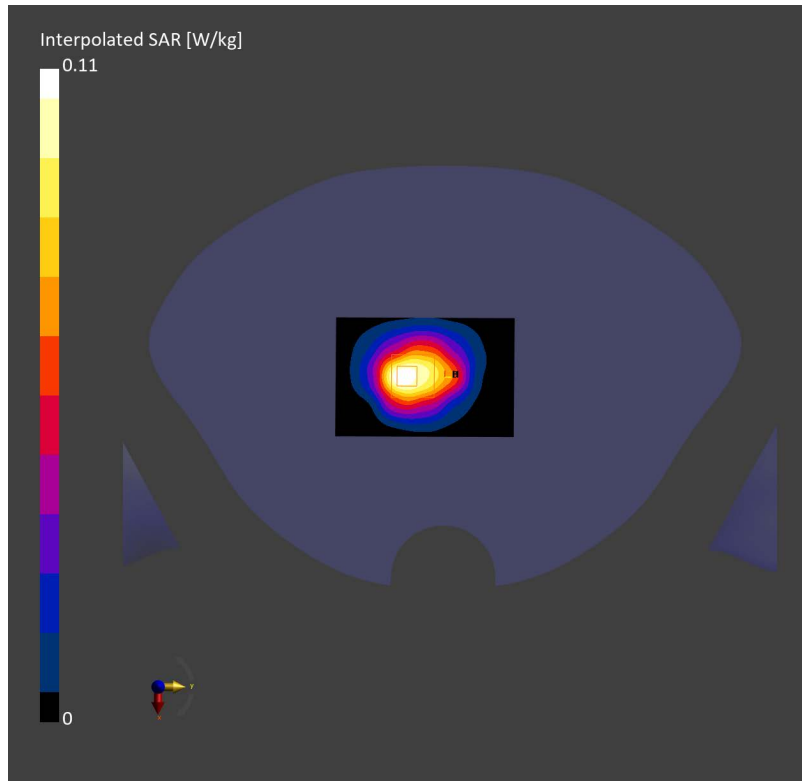
Phantom	TSL, Measured Date	Probe, Calibration Date	DAE, Calibration Date
Twin-SAM V8.0 (30deg probe tilt) - 2168	HSL1750 Charge: xxxx, 2024-Jul-15	EX3DV4 - SN7858, 2024-01-09	DAE4ip Sn1846, 2023-11-29

Scans Setup

	Area Scan	Zoom Scan
Grid Extents [mm]	60.0 x 90.0	32.0 x 32.0 x 30.0
Grid Steps [mm]	15.0 x 15.0	8.0 x 8.0 x 5.0
Sensor Surface [mm]	3.0	1.4
Graded Grid	N/A	Yes
Grading Ratio	N/A	1.5
MAIA	Y	Y
Surface Detection	All points	All points
Scan Method	Measured	Measured

Measurement Results

	Area Scan	Zoom Scan
Date	2024-07-15	2024-07-15
psSAR1g [W/Kg]	0.090	0.082
psSAR10g [W/Kg]	0.050	0.046
Power Drift [dB]	-0.01	-0.03
Power Scaling	Disabled	Disabled
Scaling Factor [dB]		
TSL Correction	No correction	No correction
M2/M1 [%]		35.2
Dist 3dB Peak [mm]		7.2



Test Laboratory: TOWE Lab

Measurement Report for JPD-500D, FRONT, Band 71, LTE-FDD (SC-FDMA, 1 RB, 15 MHz, QPSK) RBPosition:Low AntennaCfg:SISO, Channel 133297 (680.500 MHz)

Device Under Test Properties

Model, Manufacturer	Dimensions [mm]	IMEI
JPD-500D,	62.0 x 38.0 x 16.0	864486065082360

Exposure Conditions

Phantom Section, TSL	Position, Test Distance [mm]	Band	Group, UID	Frequency [MHz], Channel Number	Conversion Factor	TSL Conductivity [S/m]	TSL Permittivity
Flat, HSL	FRONT, 0.00	Band 71	LTE-FDD, 10181-CAF	680.500, 133297	9.65	0.873	42.9

Hardware Setup

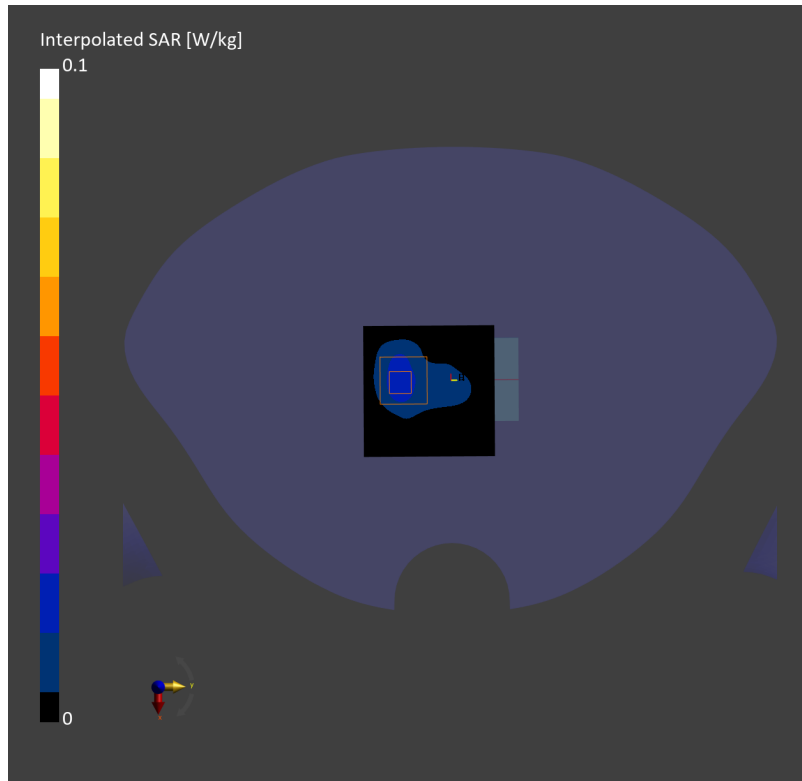
Phantom	TSL, Measured Date	Probe, Calibration Date	DAE, Calibration Date
Twin-SAM V8.0 (30deg probe tilt) - 2173	HSL750 Charge: xxxx, 2024-Jul-15	EX3DV4 - SN7812, 2024-06-25	DAE4ip Sn1847, 2024-01-04

Scans Setup

	Area Scan	Zoom Scan
Grid Extents [mm]	60.0 x 60.0	32.0 x 32.0 x 30.0
Grid Steps [mm]	15.0 x 15.0	8.0 x 8.0 x 5.0
Sensor Surface [mm]	3.0	1.4
Graded Grid	N/A	Yes
Grading Ratio	N/A	1.5
MAIA	Y	Y
Surface Detection	VMS + 6p	VMS + 6p
Scan Method	Measured	Measured

Measurement Results

	Area Scan	Zoom Scan
Date	2024-07-15	2024-07-15
psSAR1g [W/Kg]	0.018	0.020
psSAR10g [W/Kg]	0.011	0.008
Power Drift [dB]	-0.03	0.00
Power Scaling	Disabled	Disabled
Scaling Factor [dB]		
TSL Correction	No correction	No correction
M2/M1 [%]		31.1
Dist 3dB Peak [mm]		6.6



Test Laboratory: TOWE Lab

Measurement Report for JPD-500D, FRONT, Band 85, LTE-FDD (SC-FDMA, 1 RB, 15 MHz, QPSK) RBPosition:Low AntennaCfg:SISO, Channel 134092 (707.000 MHz)

Device Under Test Properties

Model, Manufacturer	Dimensions [mm]	IMEI
JPD-500D,	62.0 x 38.0 x 16.0	864486065082360

Exposure Conditions

Phantom Section, TSL	Position, Test Distance [mm]	Band	Group, UID	Frequency [MHz], Channel Number	Conversion Factor	TSL Conductivity [S/m]	TSL Permittivity
Flat, HSL	FRONT, 0.00	Band 85	LTE-FDD, 10175-CAH	707.000, 134092	9.65	0.880	42.8

Hardware Setup

Phantom	TSL, Measured Date	Probe, Calibration Date	DAE, Calibration Date
Twin-SAM V8.0 (30deg probe tilt) - 2173	HSL750 Charge: xxxx, 2024-Jul-15	EX3DV4 - SN7812, 2024-06-25	DAE4ip Sn1847, 2024-01-04

Scans Setup

	Area Scan	Zoom Scan
Grid Extents [mm]	60.0 x 60.0	32.0 x 32.0 x 30.0
Grid Steps [mm]	15.0 x 15.0	8.0 x 8.0 x 5.0
Sensor Surface [mm]	3.0	1.4
Graded Grid	N/A	Yes
Grading Ratio	N/A	1.5
MAIA	Y	Y
Surface Detection	VMS + 6p	VMS + 6p
Scan Method	Measured	Measured

Measurement Results

	Area Scan	Zoom Scan
Date	2024-07-15	2024-07-15
psSAR1g [W/Kg]	0.042	0.045
psSAR10g [W/Kg]	0.024	0.021
Power Drift [dB]	-0.01	0.04
Power Scaling	Disabled	Disabled
Scaling Factor [dB]		
TSL Correction	No correction	No correction
M2/M1 [%]		23.9
Dist 3dB Peak [mm]		5.1

