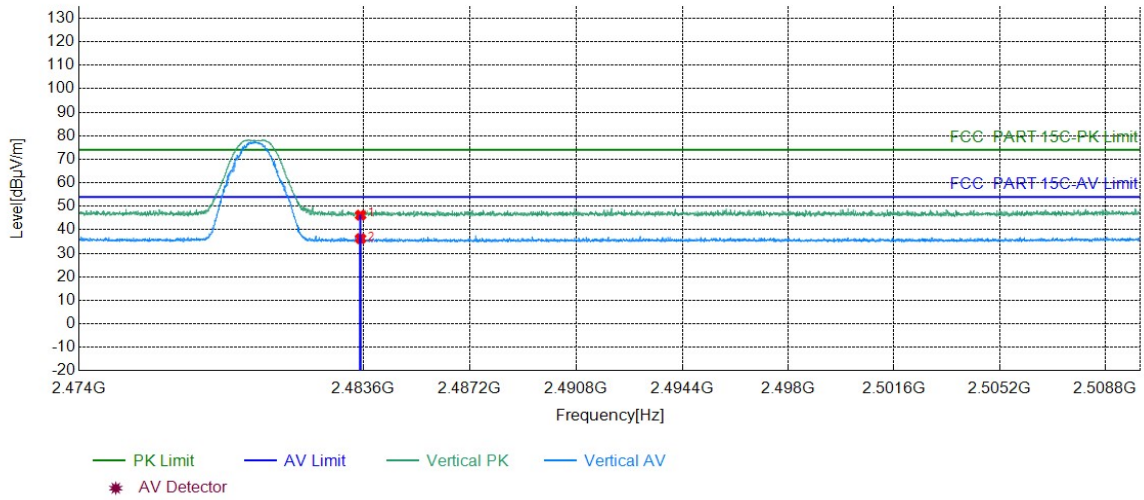


Mode:	BLE GFSK Transmitting	Channel:	2480
Remark:			

Test Graph



Suspected List									
NO	Freq. [MHz]	Factor [dB]	Reading [dBµV]	Level [dBµV/m]	Limit [dBµV/m]	Margin [dB]	Result	Polarity	Remark
1	2483.5000	6.57	39.66	46.23	74.00	27.77	PASS	Vertical	PK
2	2483.5000	6.57	29.69	36.26	54.00	17.74	PASS	Vertical	AV

Note:

The field strength is calculated by adding the Antenna Factor, Cable Factor & Preamplifier. The basic equation with a sample calculation is as follows:

Final Test Level = Receiver Reading - Correct Factor

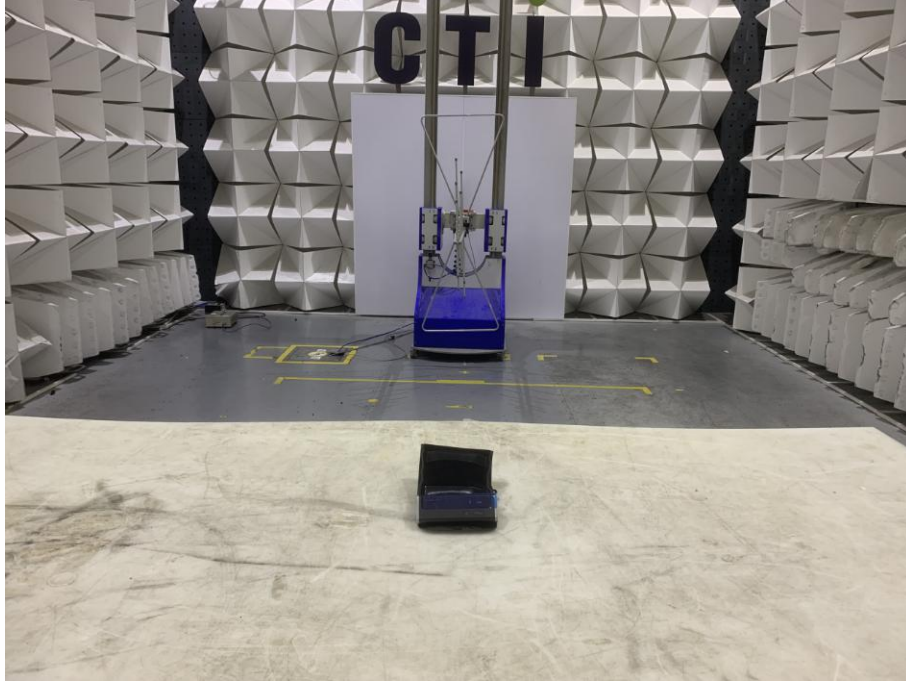
Correct Factor = Preamplifier Factor - Antenna Factor - Cable Factor

8 Appendix A

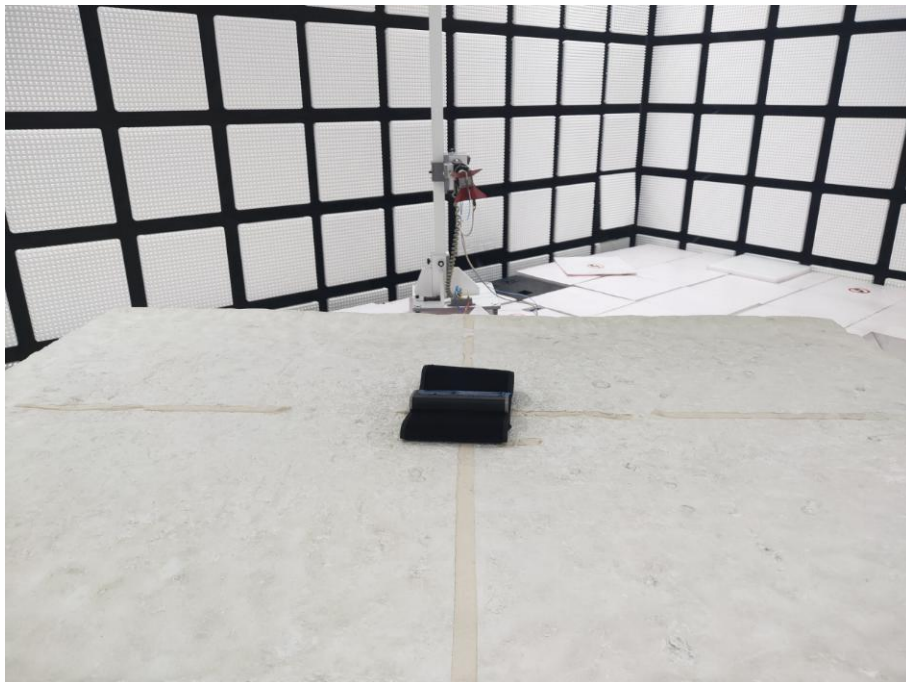
Refer to Appendix: Bluetooth LE of EED32O80001001

9 PHOTOGRAPHS OF TEST SETUP

Test model No.: BP2V



Radiated spurious emission Test Setup-1(Below 1GHz)



Radiated spurious emission Test Setup-2(Above 1GHz)



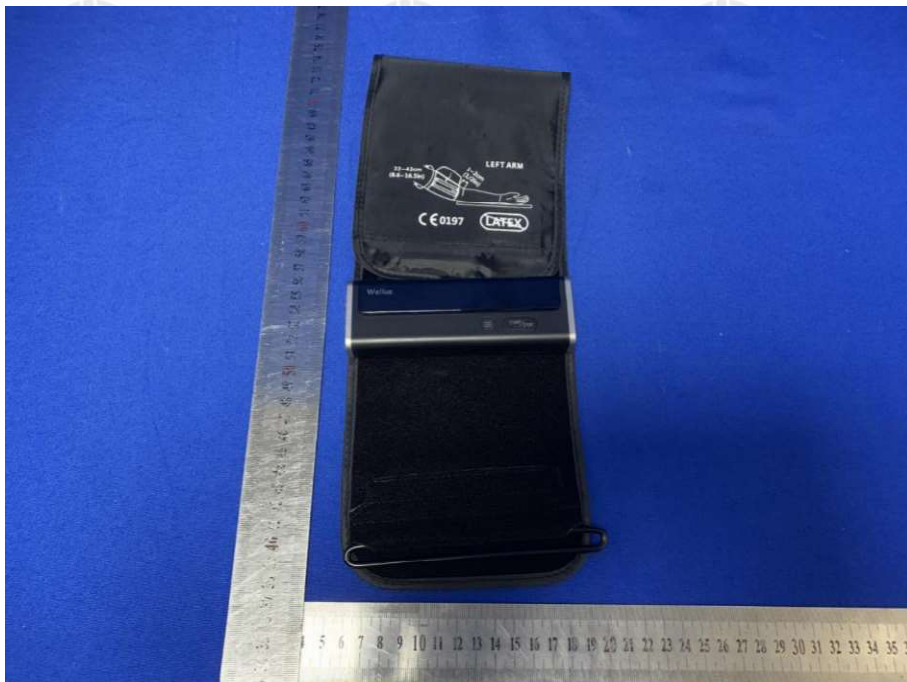
**Radiated spurious emission Test Setup-3(Above 1GHz)
There are absorbing materials under the ground.**

10 PHOTOGRAPHS OF EUT Constructional Details

Test Model No.:BP2V



View of Product-1



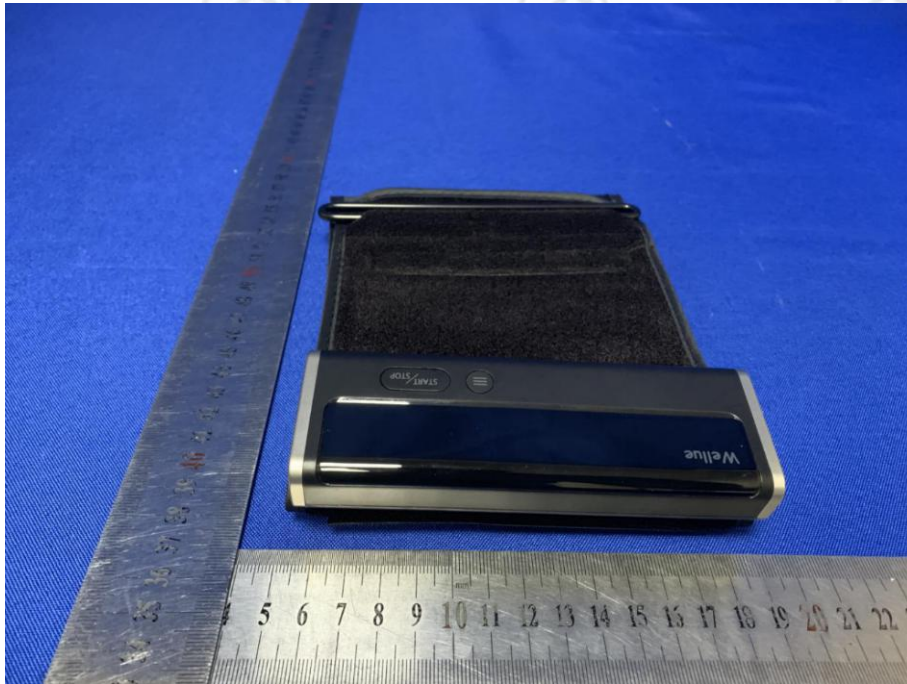
View of Product-2



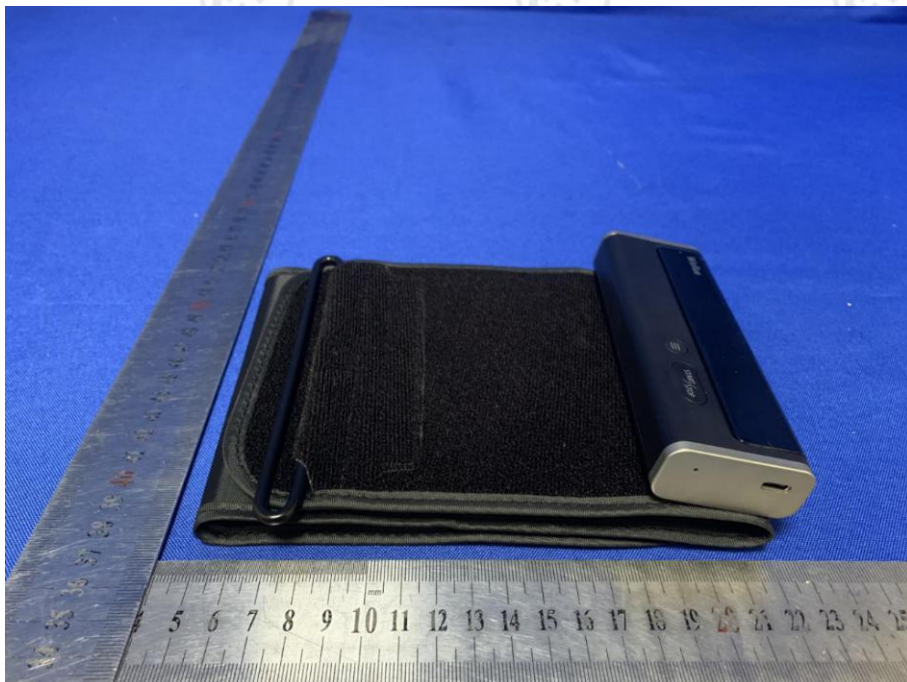
View of Product-3



View of Product-4



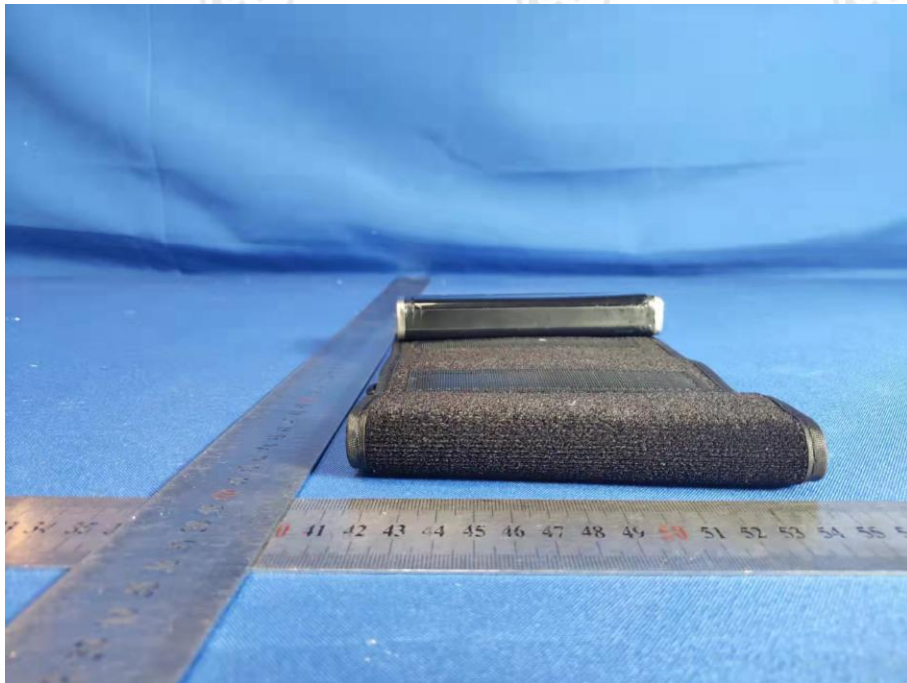
View of Product-5



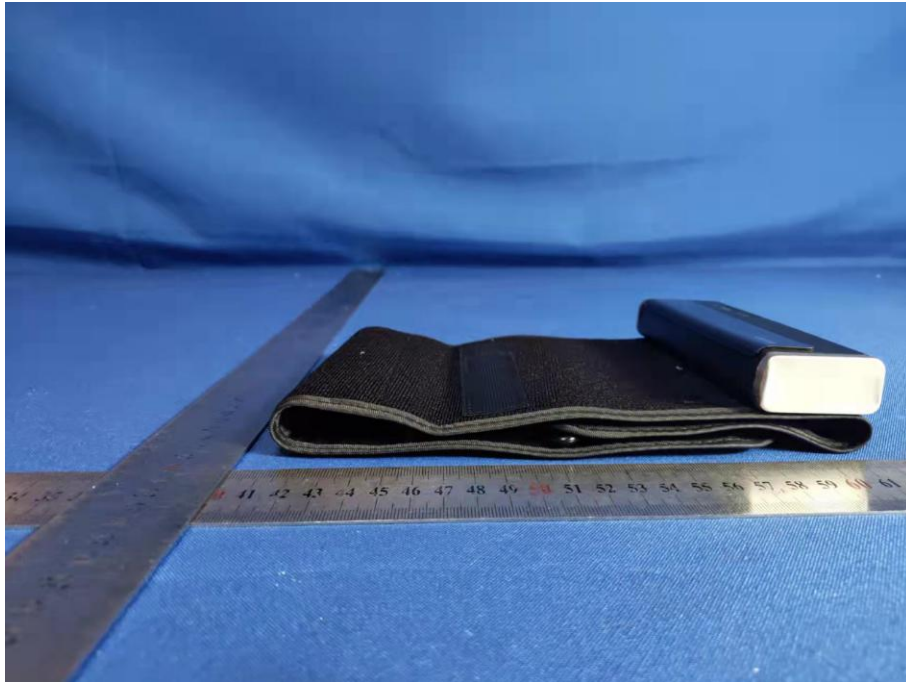
View of Product-6



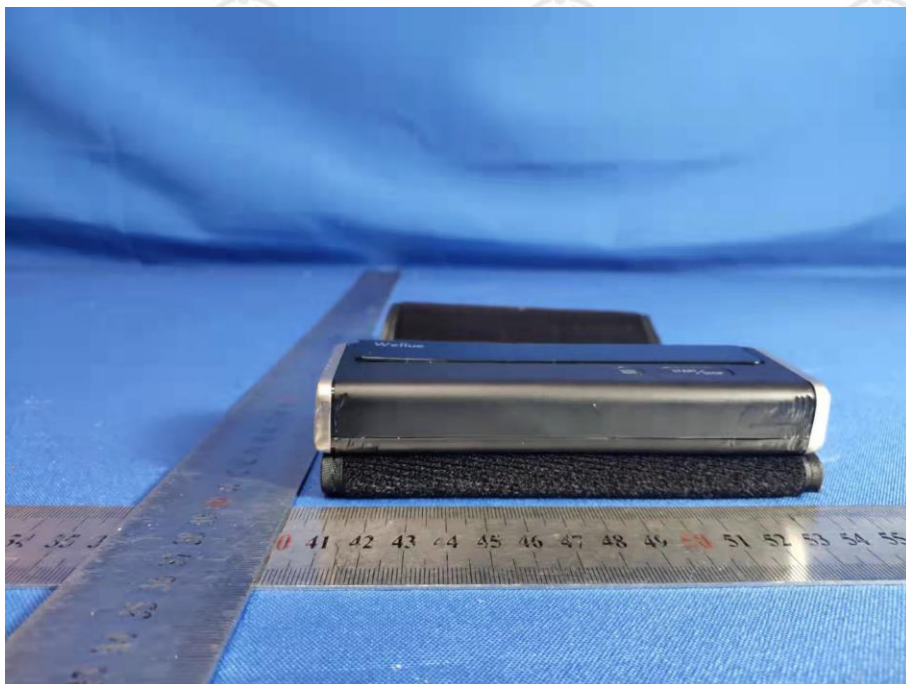
View of Product-7



View of Product-8



View of Product-9



View of Product-10



View of Product-11



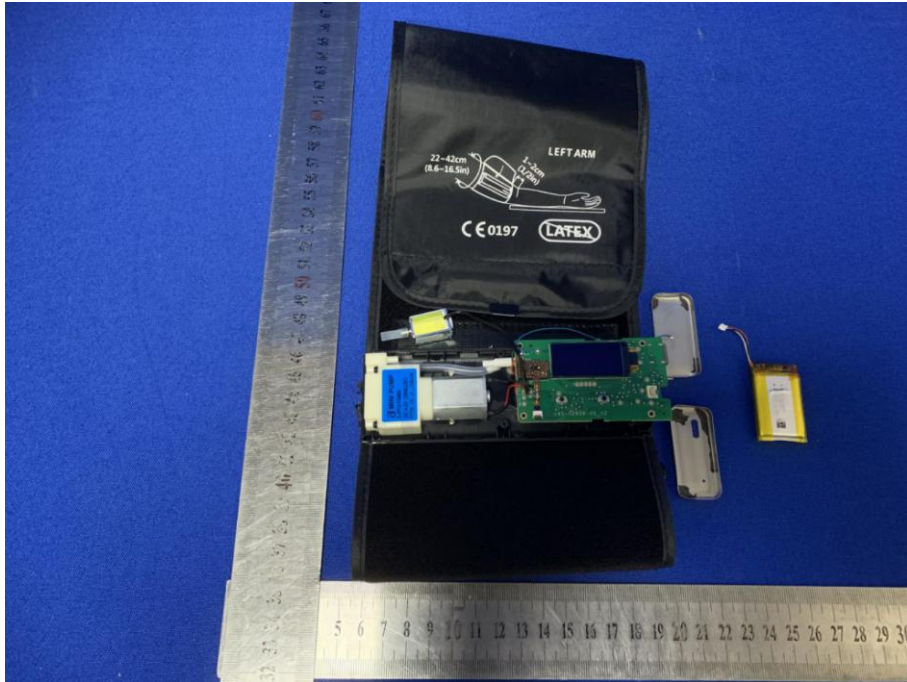
View of Product-12



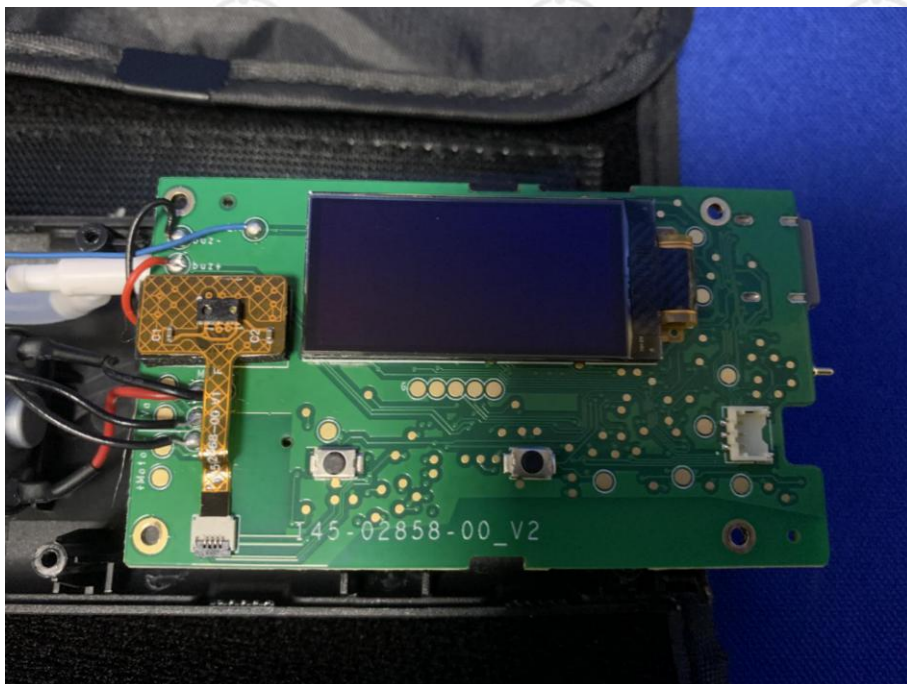
View of Product-13



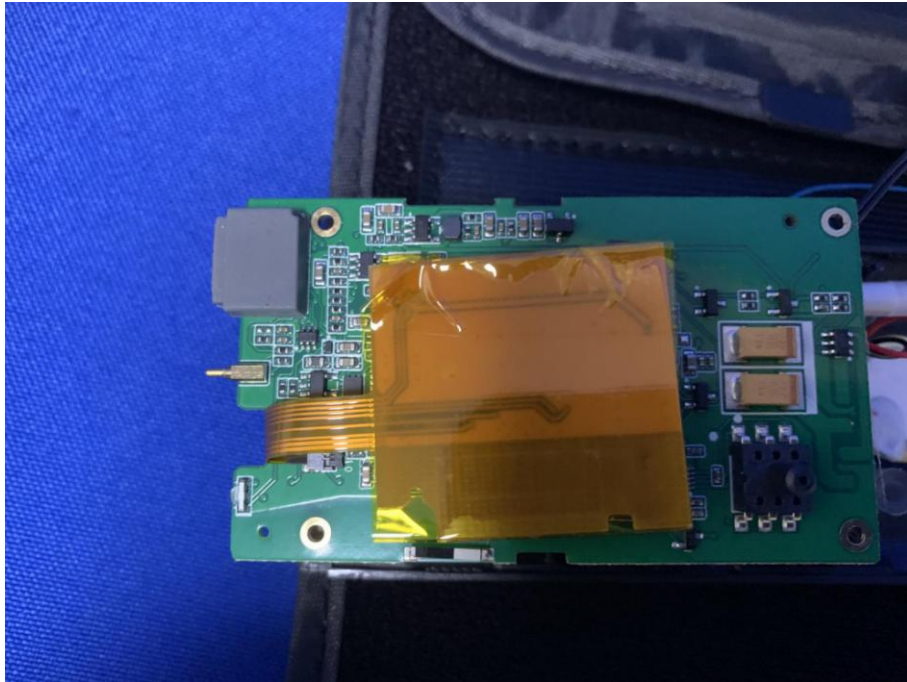
View of Product-14



View of Product-15



View of Product-16



View of Product-17



View of Product-18