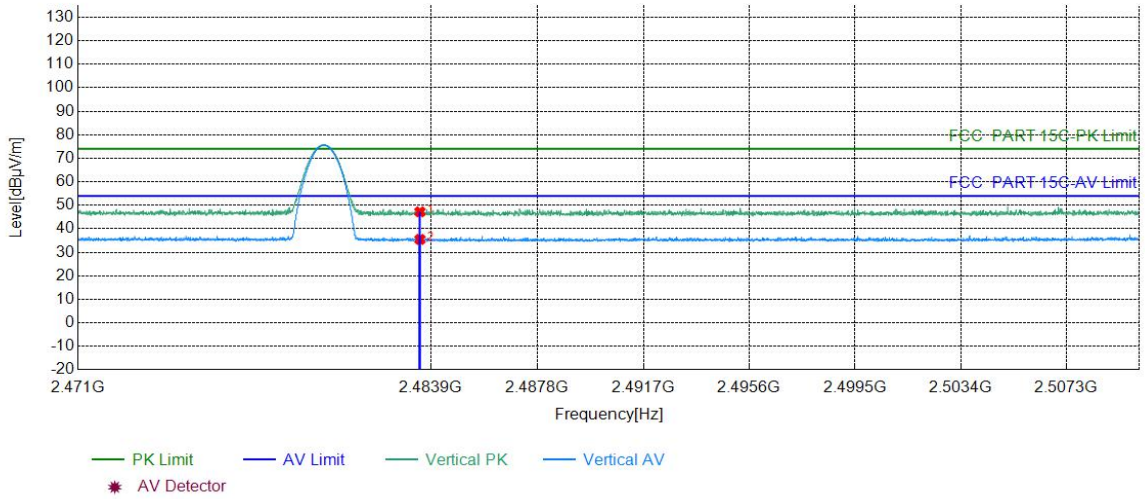


Mode:	BLE GFSK Transmitting	Channel:	2480
Remark:	2Mbps		

### Test Graph



Suspected List									
NO	Freq. [MHz]	Factor [dB]	Reading [dBµV]	Level [dBµV/m]	Limit [dBµV/m]	Margin [dB]	Result	Polarity	Remark
1	2483.5000	6.57	40.67	47.24	74.00	26.76	PASS	Vertical	PK
2	2483.5000	6.57	28.92	35.49	54.00	18.51	PASS	Vertical	AV

**Note:**

The field strength is calculated by adding the Antenna Factor, Cable Factor & Preamplifier. The basic equation with a sample calculation is as follows:

Final Test Level = Receiver Reading + Factor

Factor = Antenna Factor + Cable Factor – Preamplifier Factor

## 7 Appendix A

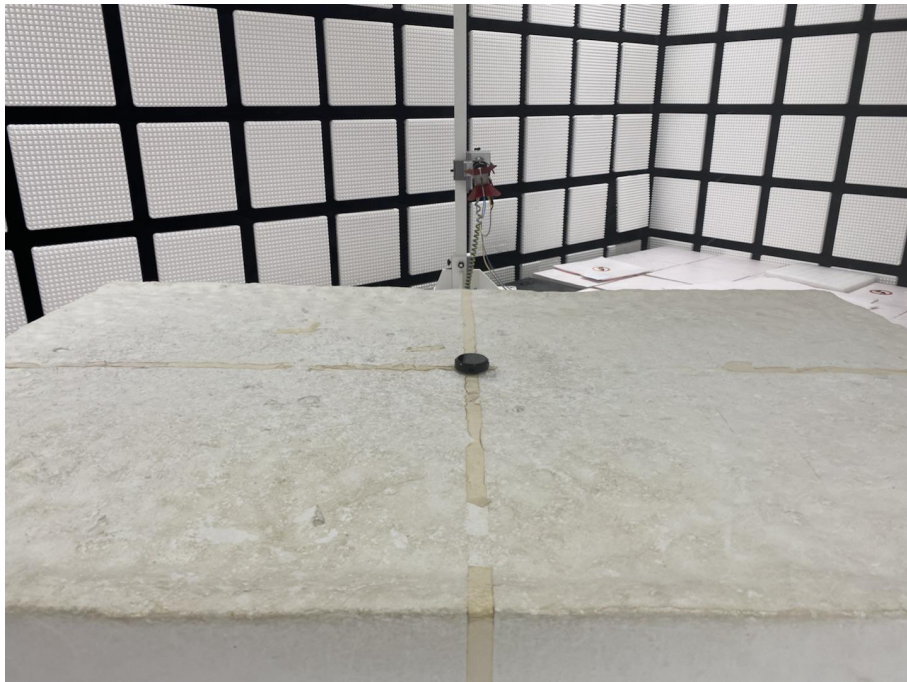
Refer to Appendix: Bluetooth LE of EED32O80211001.

**PHOTOGRAPHS OF TEST SETUP**

Test Model No.:M12



**Radiated spurious emission Test Setup-1(Below 1GHz)**



**Radiated spurious emission Test Setup-2(Above 1GHz)**



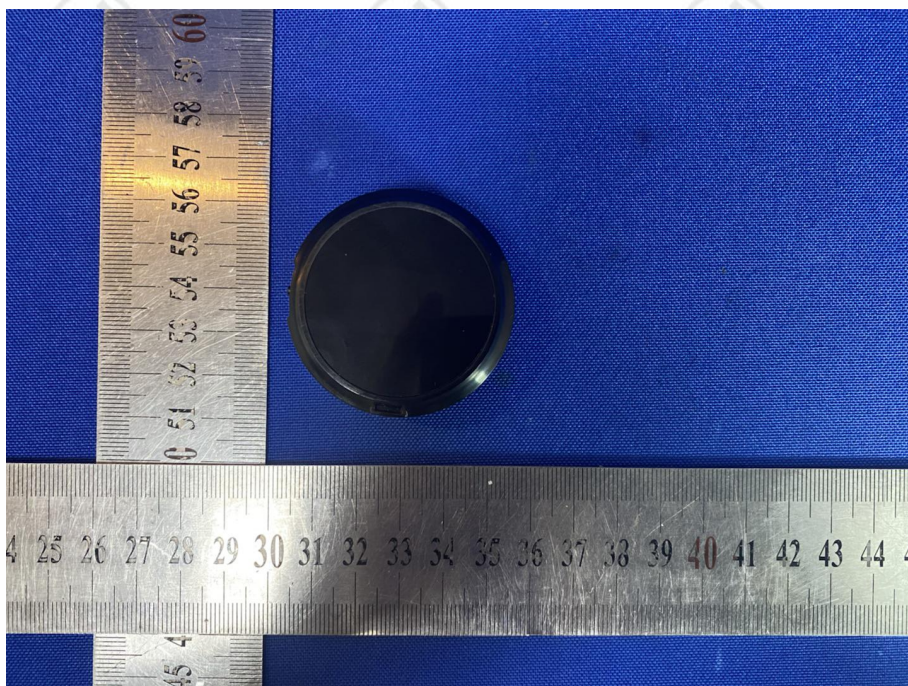
**There are absorbing materials under the ground**

**PHOTOGRAPHS OF EUT Constructional Details**

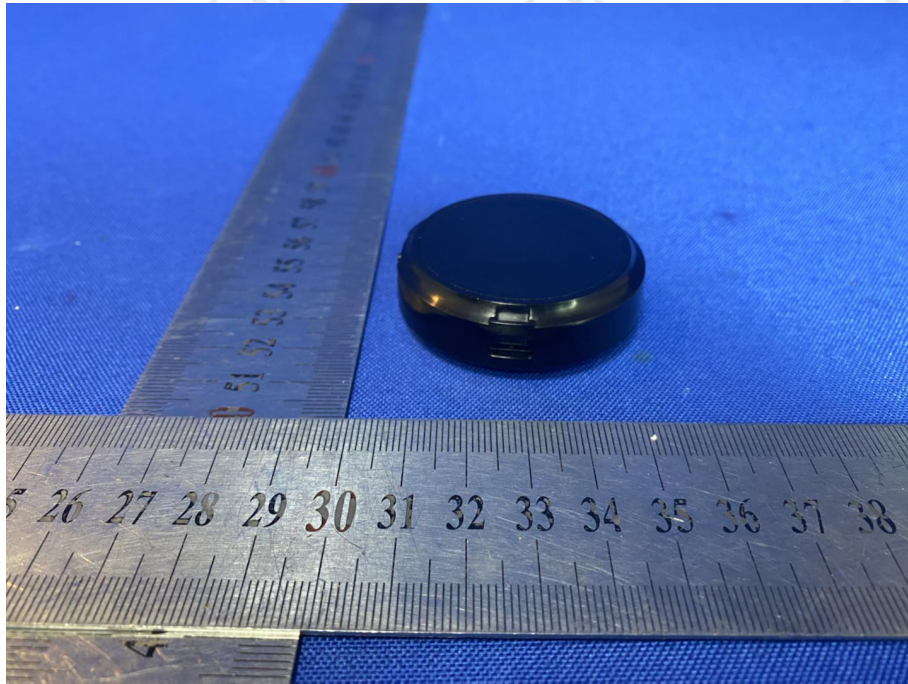
Test model No.: M12



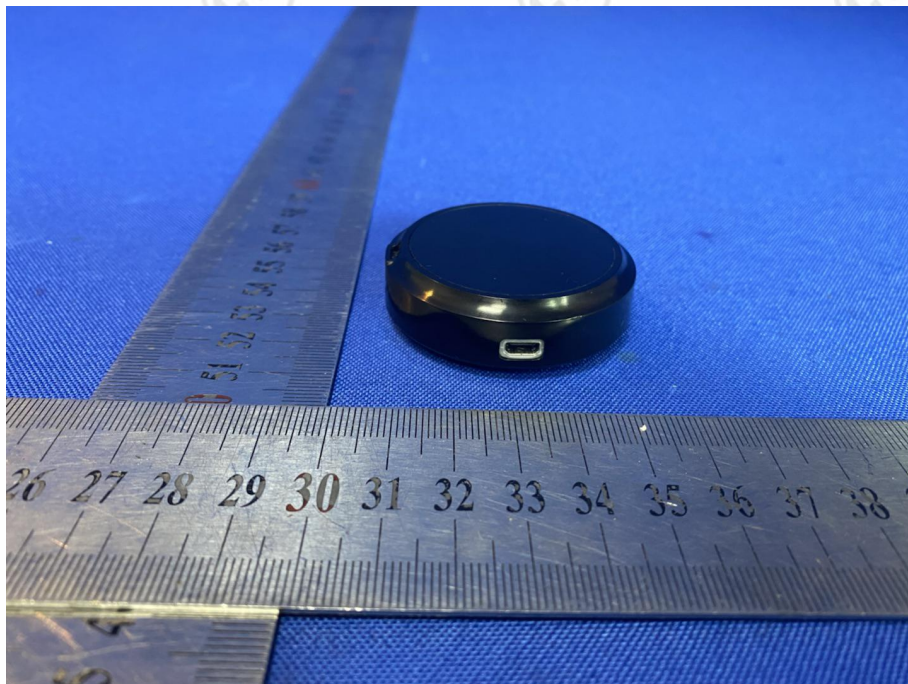
View of Product-1



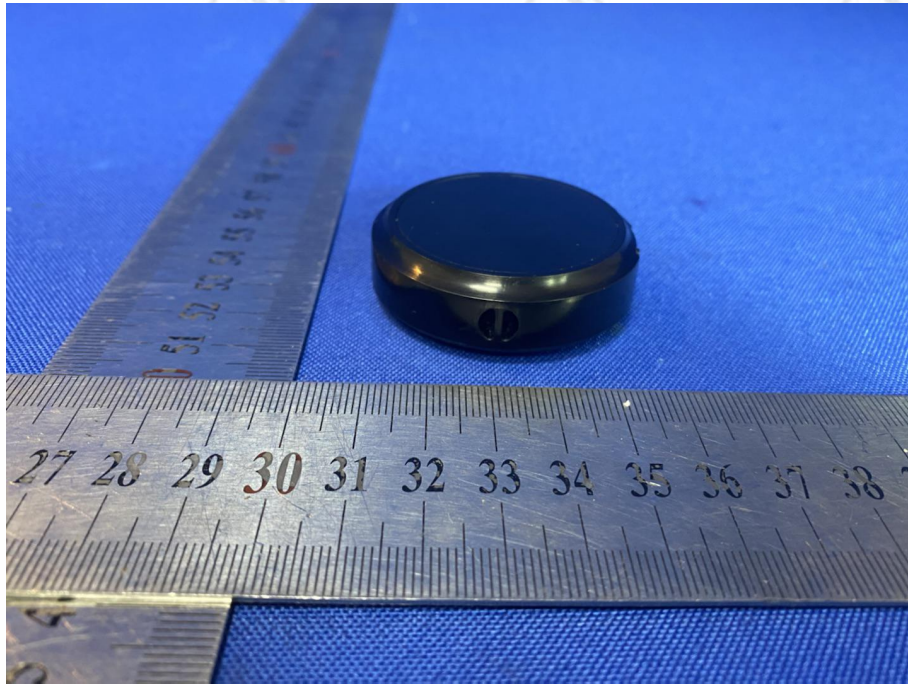
View of Product-2



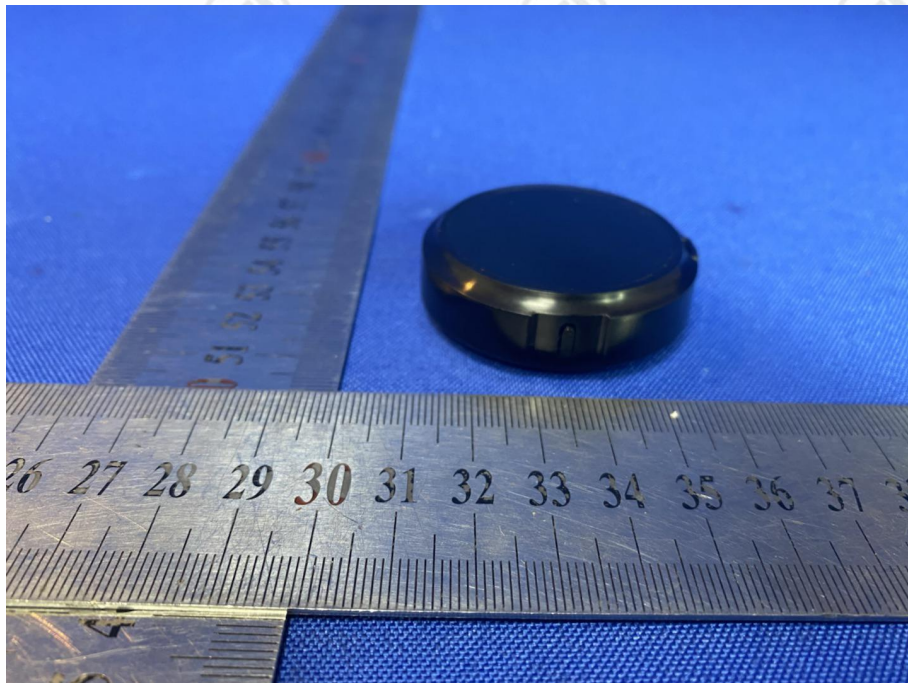
View of Product-3



View of Product-4



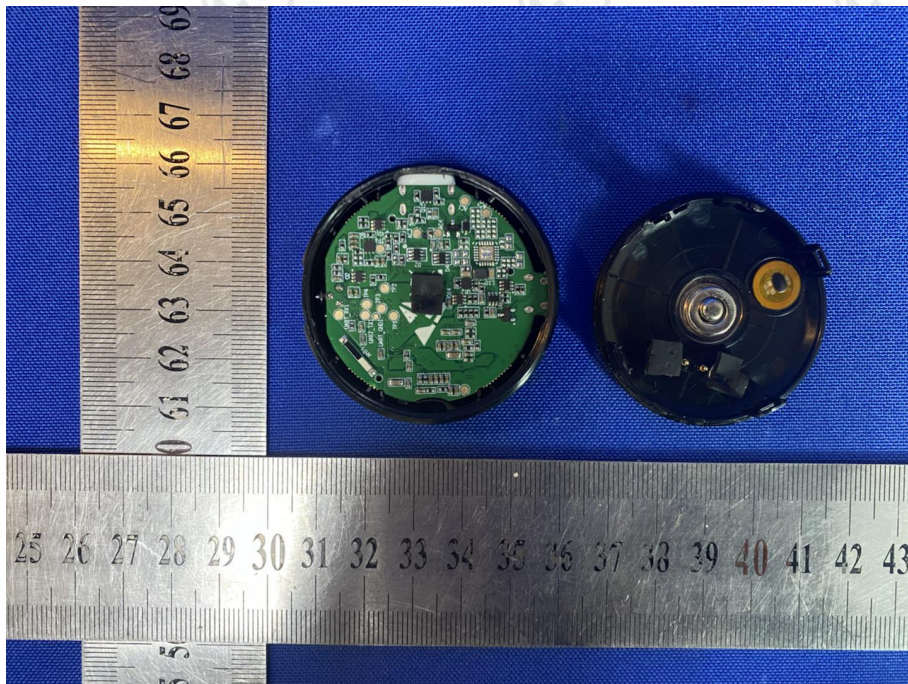
View of Product-5



View of Product-6

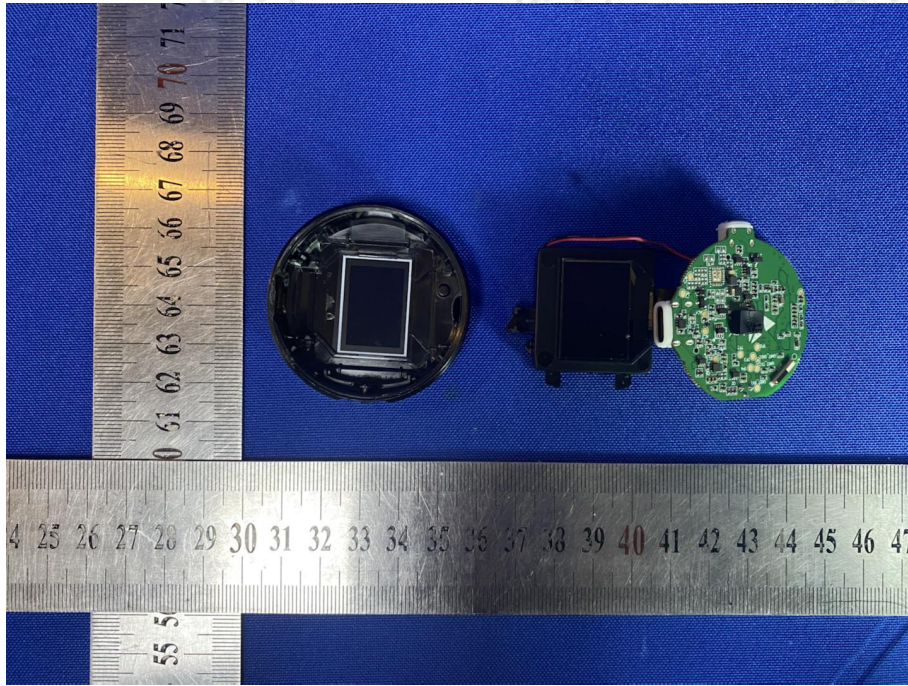


View of Product-7

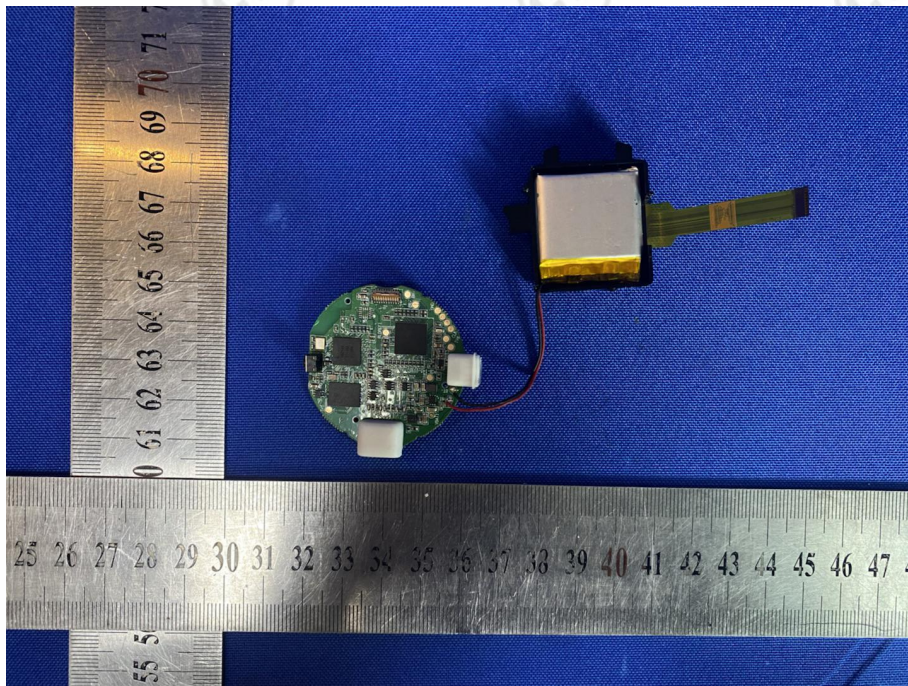


View of Product-8

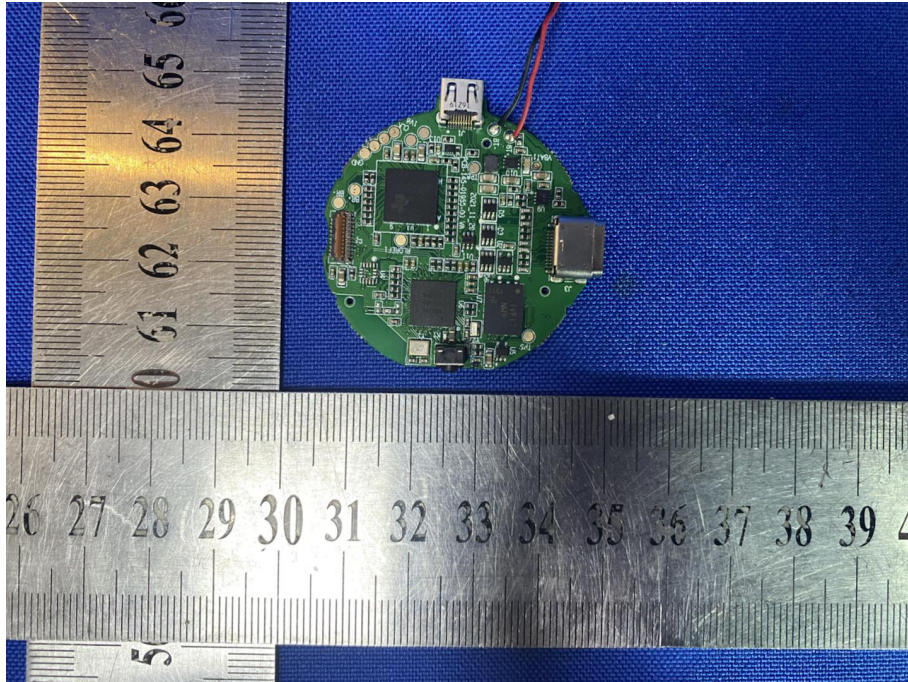




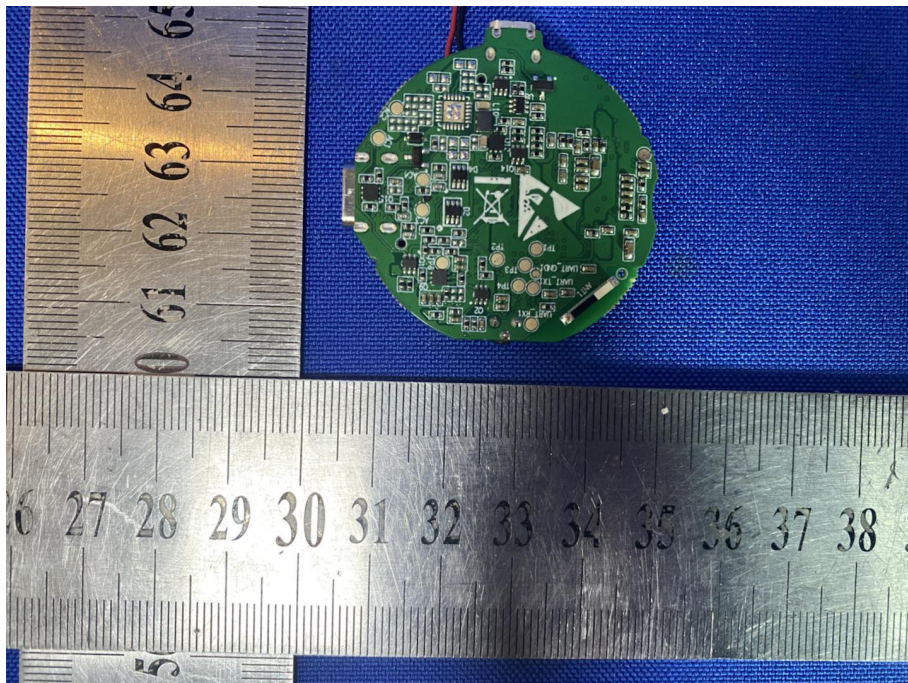
View of Product-9



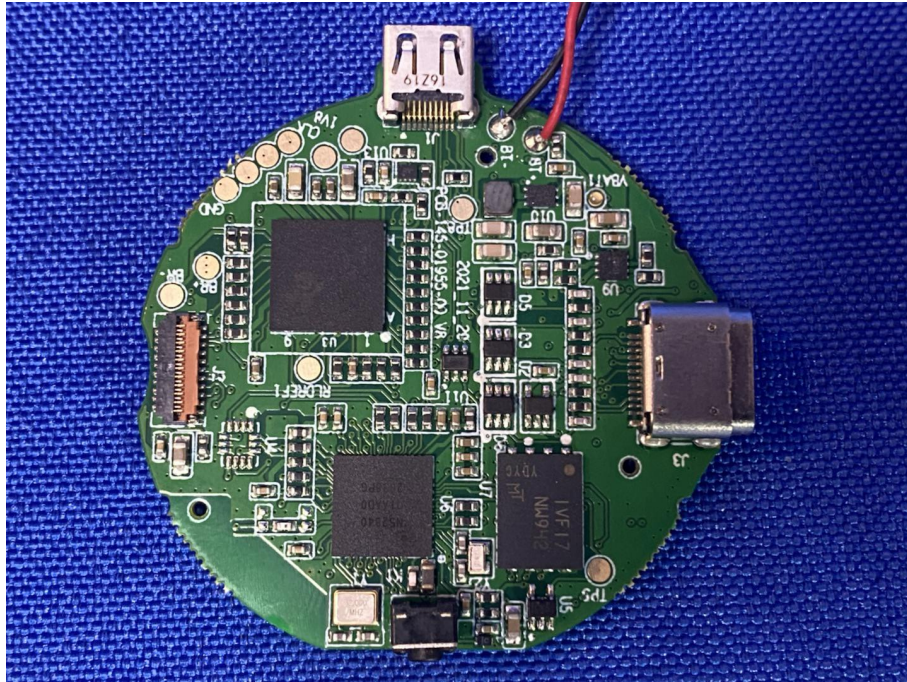
View of Product-10



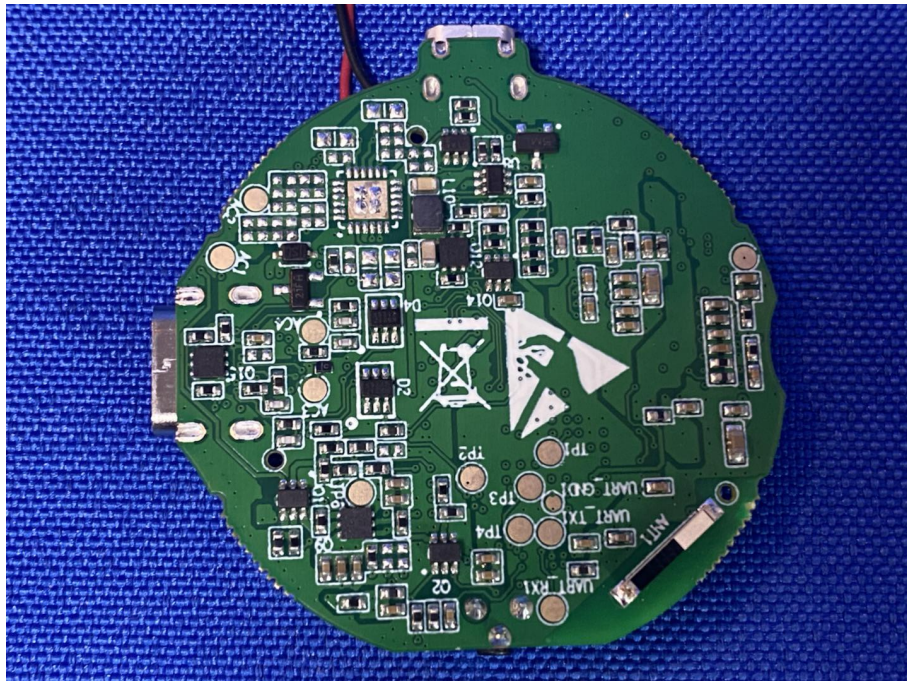
View of Product-11



View of Product-12



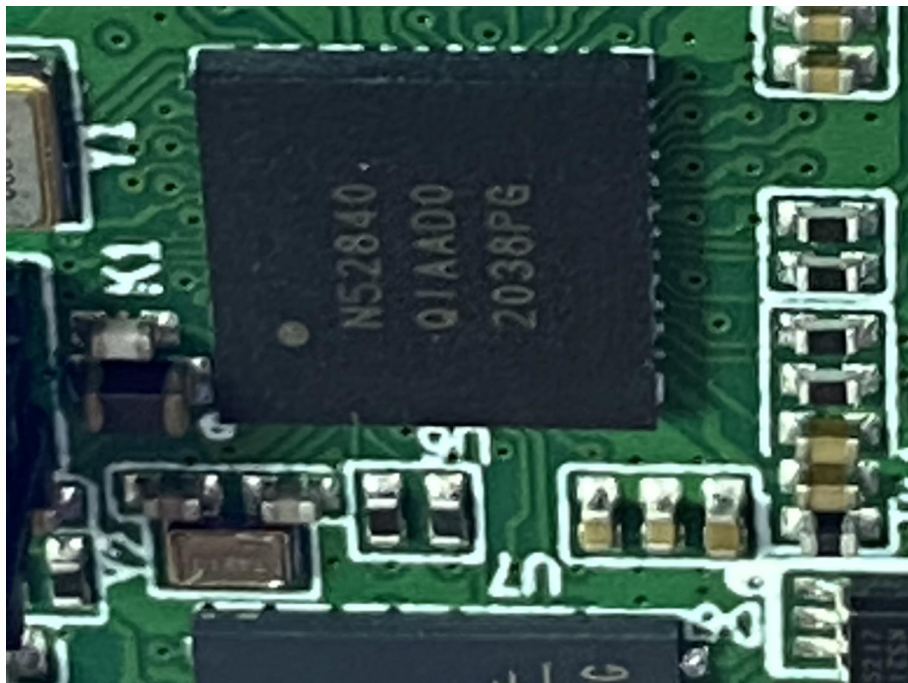
View of Product-13



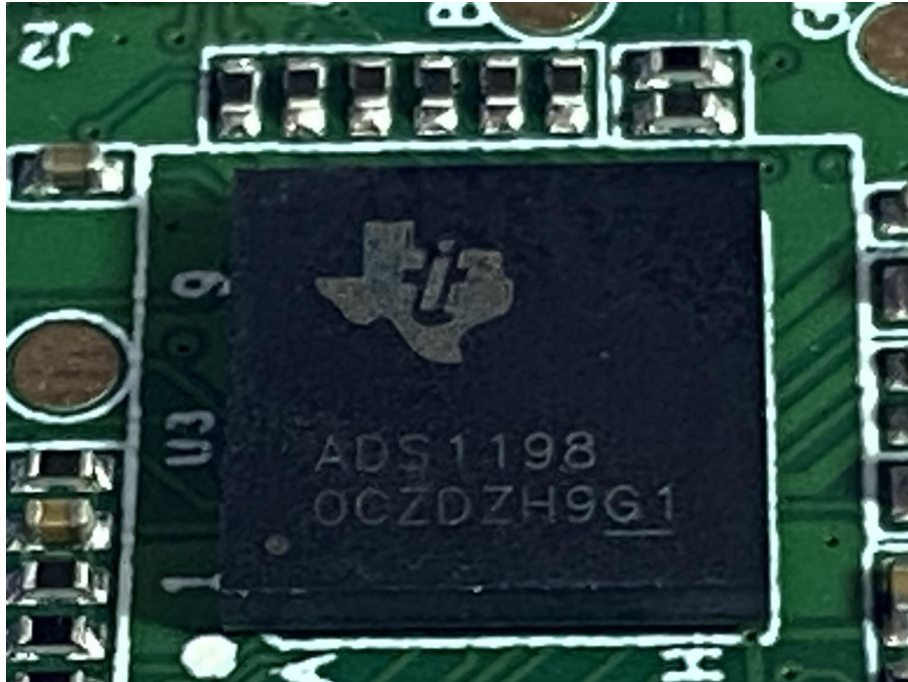
View of Product-14



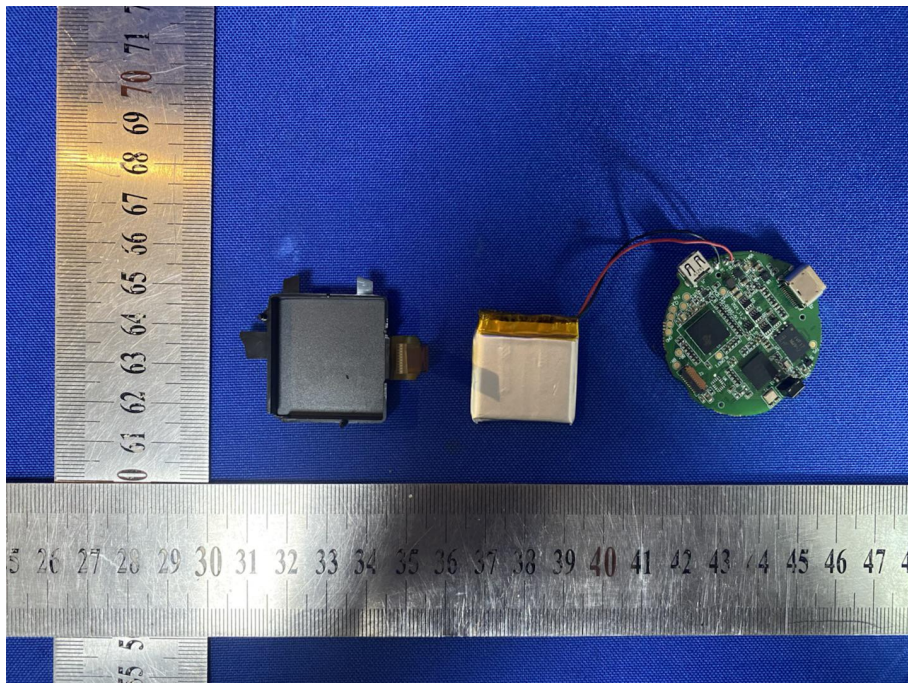
View of Product-15



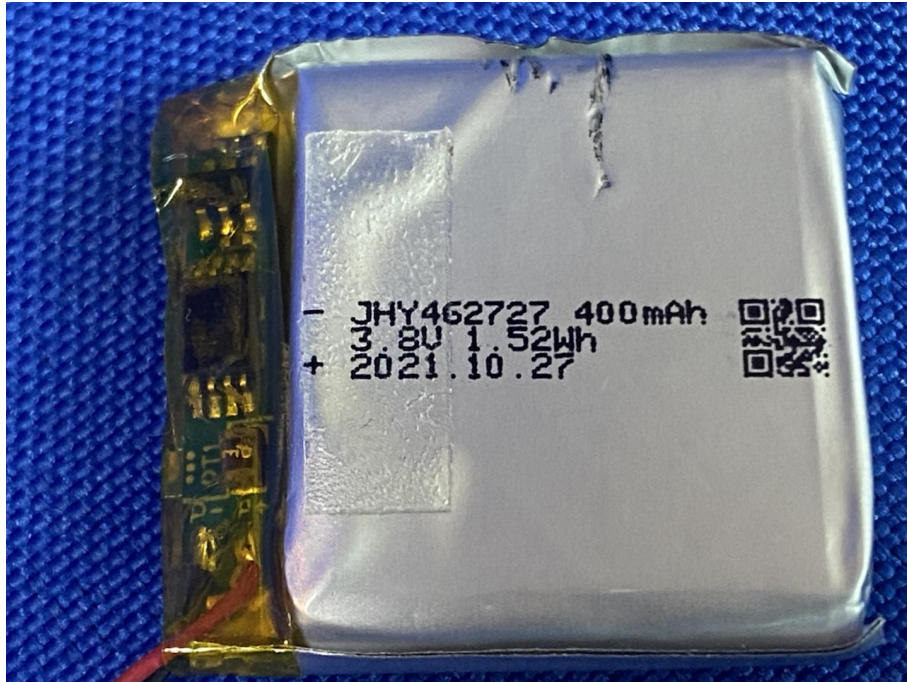
View of Product-16



View of Product-17



View of Product-18



View of Product-19

The test report is effective only with both signature and specialized stamp, the result(s) shown in this report refer only to the sample(s) tested. Without written approval of CTI, this report can't be reproduced except in full.

\*\*\* End of Report \*\*\*