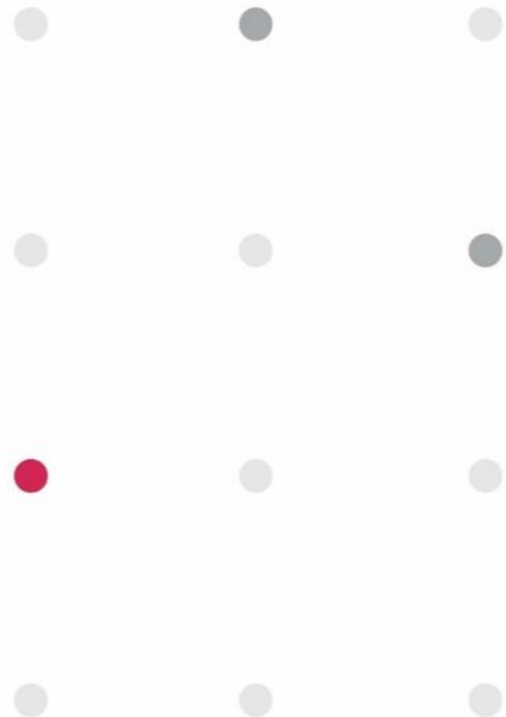


# SHENZHEN XINDINGXING ELEC. CO., LTD.

*Address: 8F, Building 4, Honghui Industrial Park, Liuxian 2nd Road, Bao'an District, Shenzhen*

PSA

PASSIVE SYSTEM ALLIANCE  
INPAQ TECHNOLOGY CO., LTD.



# VMJ01

Presented by  
FangTan Jin

INPAQ Technology Co., Ltd.

2024/01/22

<b>Version</b>	<b>Date</b>	<b>Description</b>	<b>Author</b>
V01	2024/01/22	New Release	FangTan Jin

# OUTLINE

## 1. Measurement Information

1.1 Experimental Setup

1.2 Antenna Solution Detail

## 2. Antenna Characteristics

2.1 S-Parameter

2.2 Antenna Efficiency and Peak Gain

2.3 3D Pattern & 2D Radiation Patterns

2.4 Summary Table

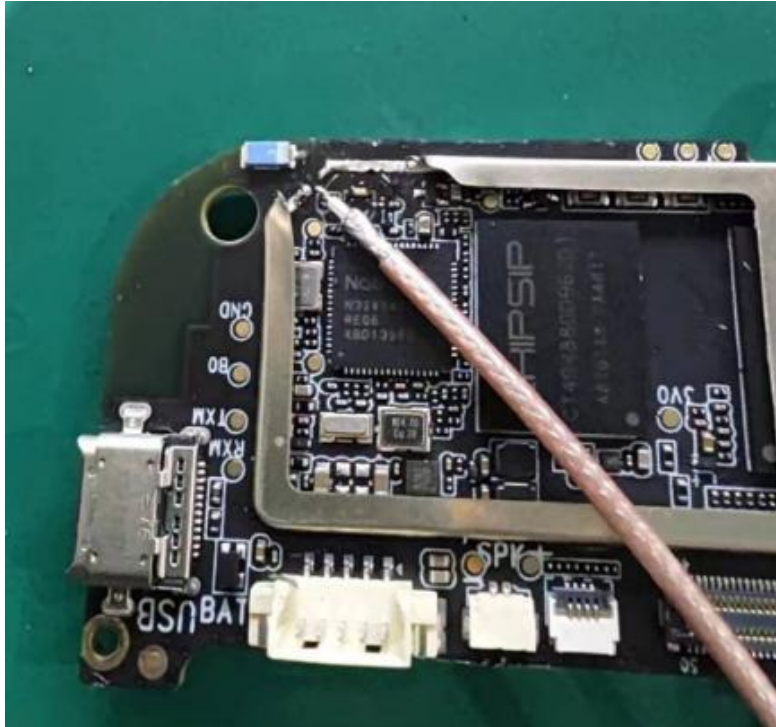
# 1. Measurement Information

## 1.1 Experimental Setup

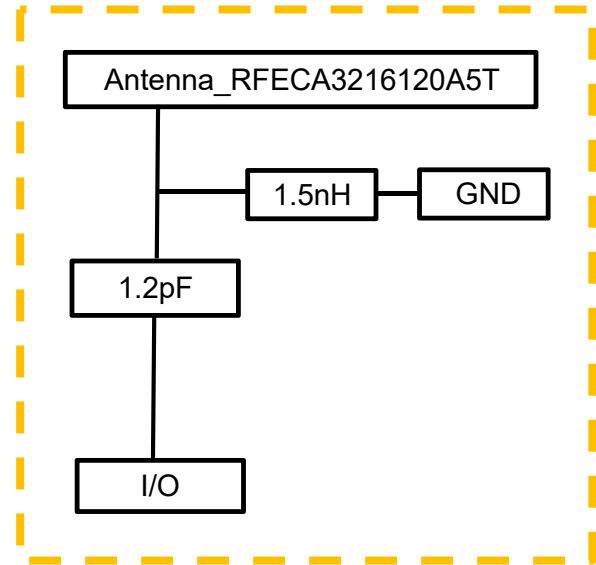


# 1. Measurement Information

## 1.2 Antenna Solution Detail

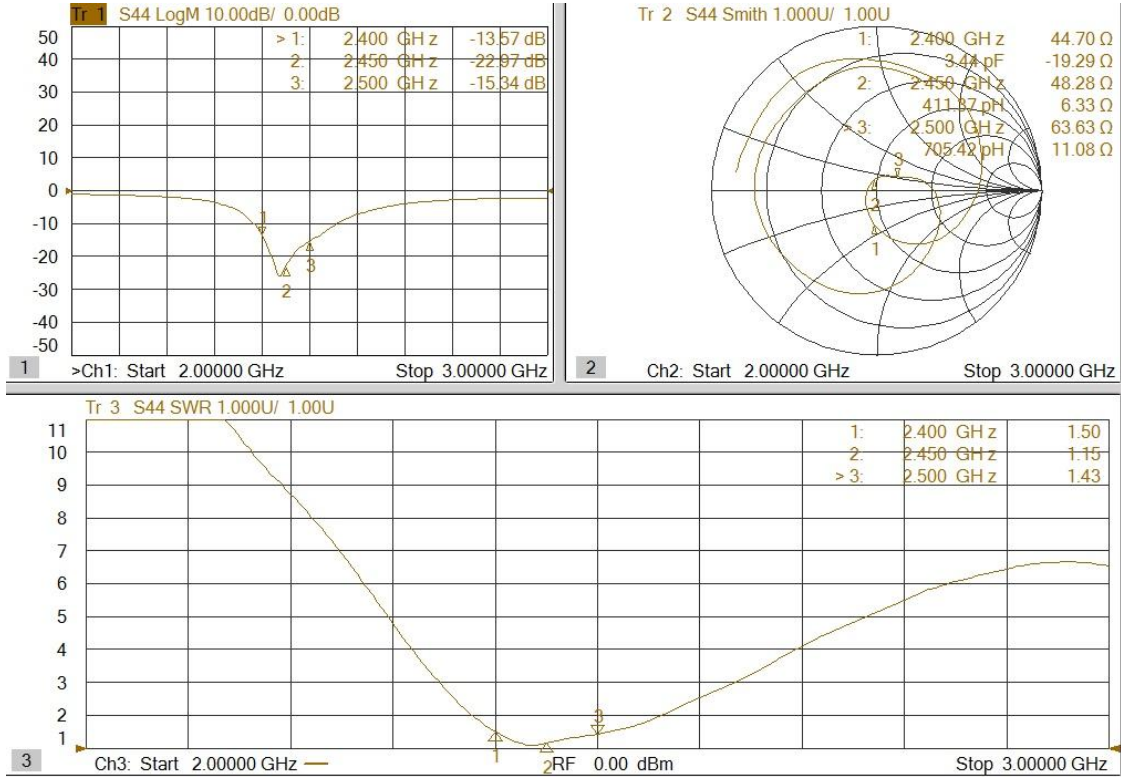


### Matching values



# 2. Antenna Characteristics

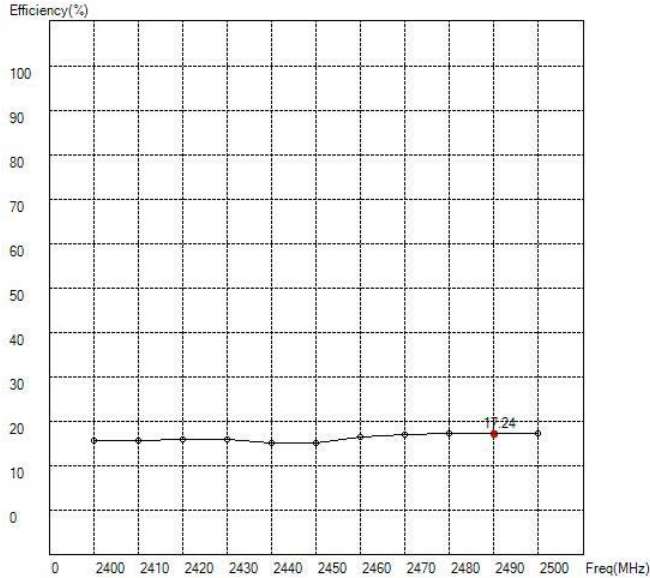
## 2.1 S-Parameter



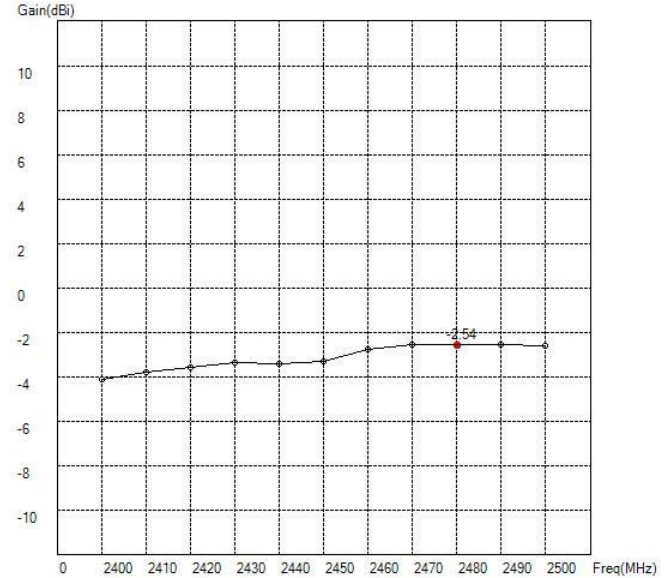


## 2. Antenna Characteristics

### 2.2 Antenna Efficiency and Peak Gain



Maximum Efficiency at 2490MHz : 17.24 %

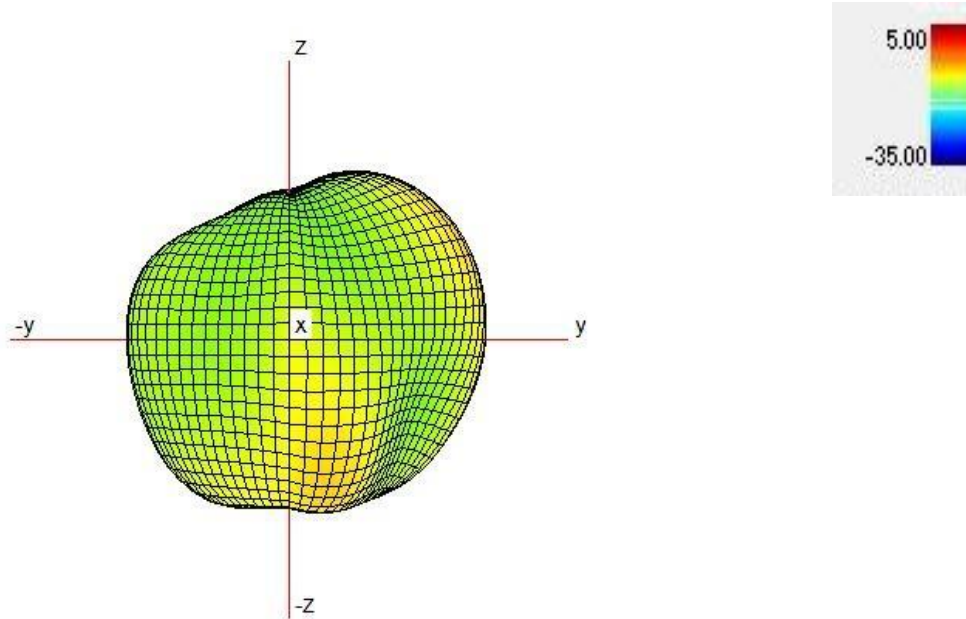


Maximum Peak Gain at 2480 MHz : -2.54 dBi

## 2. Antenna Characteristics

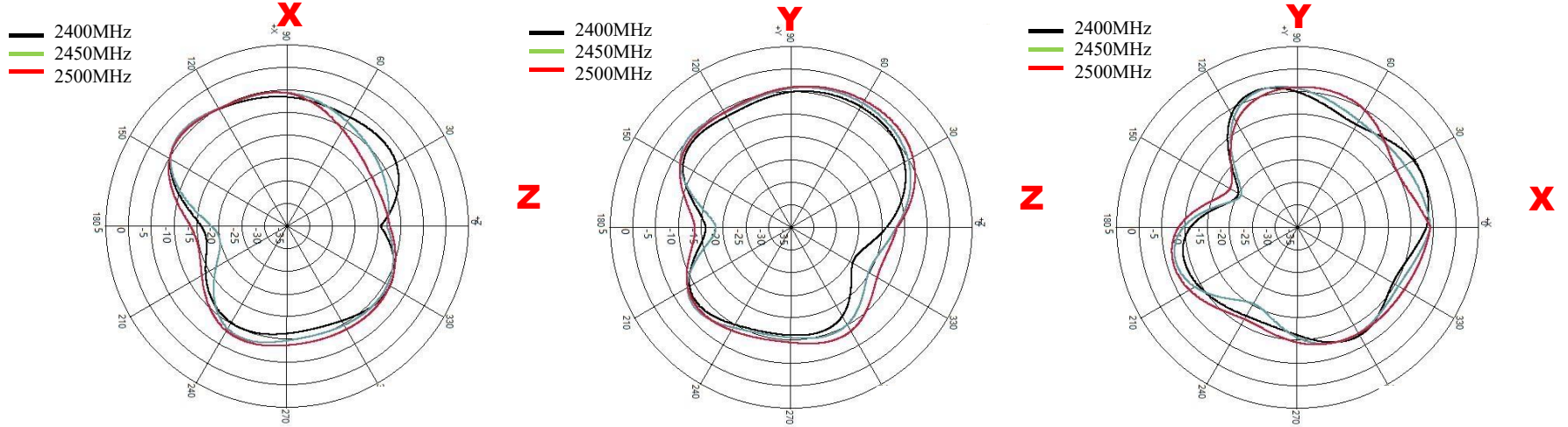
### 2.3 3D Pattern

2450 MHz



# 2. Antenna Characteristics

## 2.3 2D Radiation Patterns



Frequency [MHz]	ZX plane		ZY plane		XY plane	
	Max Value [dBi]	Average [dBi]	Max Value [dBi]	Average [dBi]	Max Value [dBi]	Average [dBi]
2400	-5.11	-8.48	-4.18	-8.27	-5.03	-8.21
2450	-4.96	-8.49	-3.27	-7.29	-4.25	-8.13
2500	-5.04	-8.37	-2.60	-6.71	-3.98	-7.59

## 2. Antenna Characteristics

### 2.4 Summary Table

<b>ANT</b>				
<b>Frequency (MHz)</b>	<b>2400</b>	<b>2450</b>	<b>2480</b>	<b>2500</b>
<b>Efficiency (%)</b>	<b>15.55</b>	<b>15.21</b>	<b>17.19</b>	<b>17.19</b>
<b>Peak gain (dBi)</b>	<b>-4.12</b>	<b>-3.27</b>	<b>-2.54</b>	<b>-2.60</b>

# Thank you