



Acknowledgment Letter

SPECIFICATION FOR APPROVAL

Customer Name

CUSTOMER NAME: Langqiang

product name

PRODUCT NAME: WIFI dual antenna ANT0 second-generation terminal

line length 40MM

Customer part number

CUSTOMER P/N:

	MANUFACTURER SIGNATURE	CUSTOMER SIGNATURE
CHECKED BY:	Yan Peihao	
APPROVED BY:	Feng Juan	
DATE:	2023.2.3	

Address: Room 401-407, Building A, Jinfulai Building, Dabao Road, District 28, Bao'an District,

Shenzhen

Phone: 0755-27728733

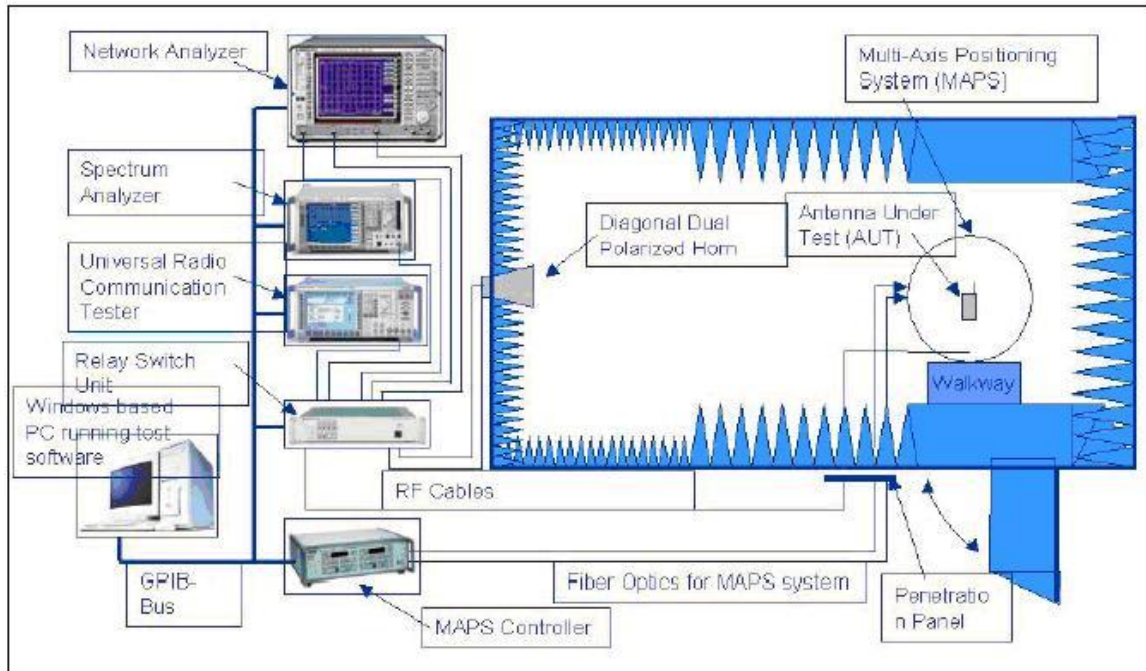
Fax:0755-27805416



Contents

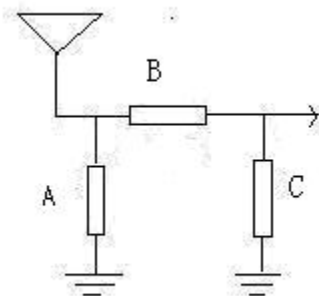
<i>Item</i>	<i>Description</i>
1.	Testing instruments and environment
2.	Matching circuit
3.	Machine and antenna pictures
4.	S11 circle diagram
5.	Antenna Passive Performance - 3D Total Gain Pattern
6.	Antenna Passive Performance - 2D Total Gain Pattern
7.	efficiency gain
8.	Line sample diagram

1 . Test instrument and environment: CTIA 743 darkroom, 8960/5515C, with the phone placed backwards at a turntable 4 meters away from the standard horn antenna



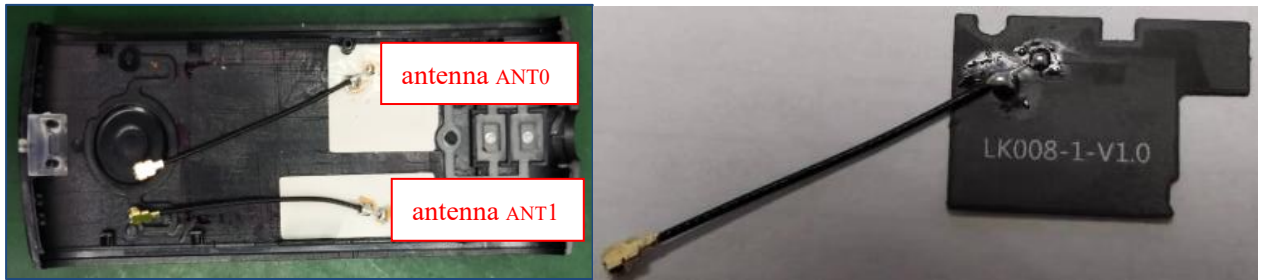
2、 matching circuit

No matching circuit added.

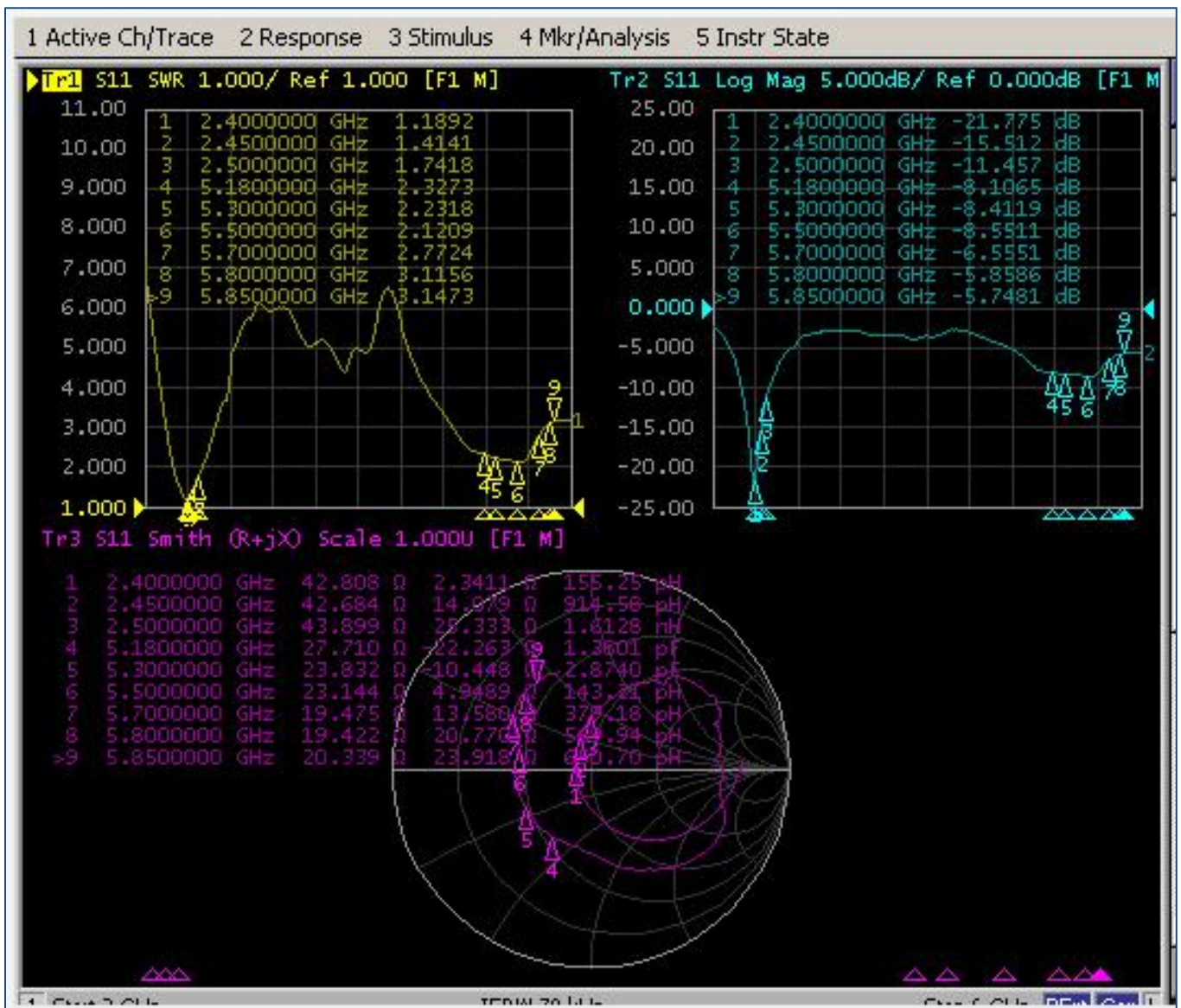


matching circuit	A	B	C
numerical value	NF	0ohm	NF

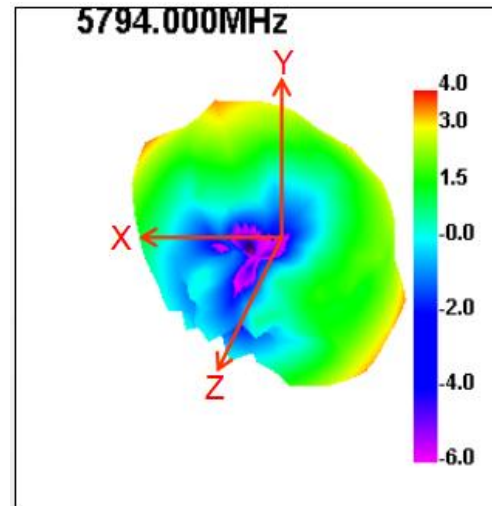
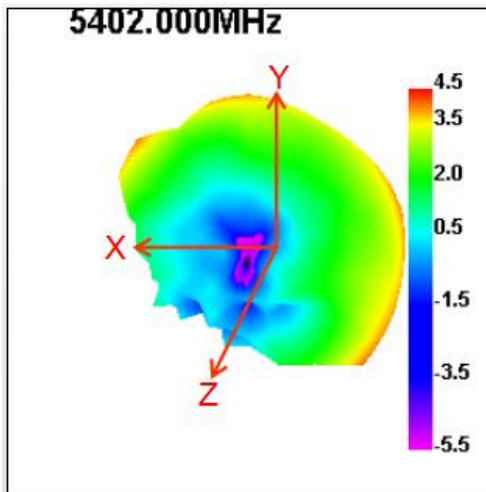
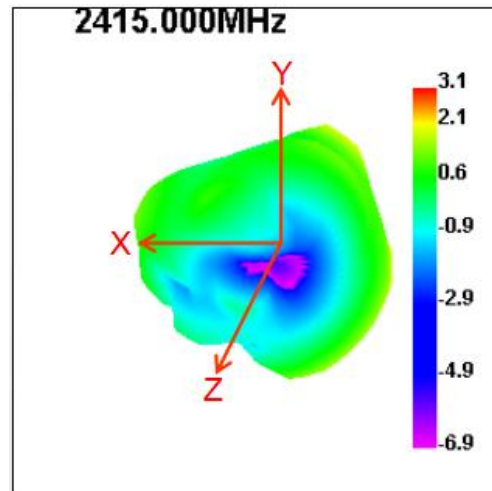
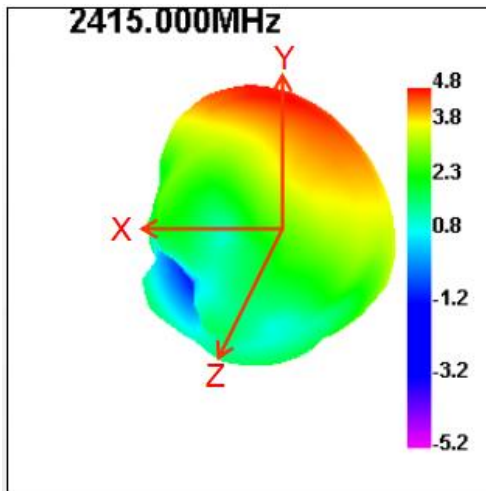
3. Machine antenna image:



4. Antenna ANT0 S11, ReturnLoss, Smith circular diagram:



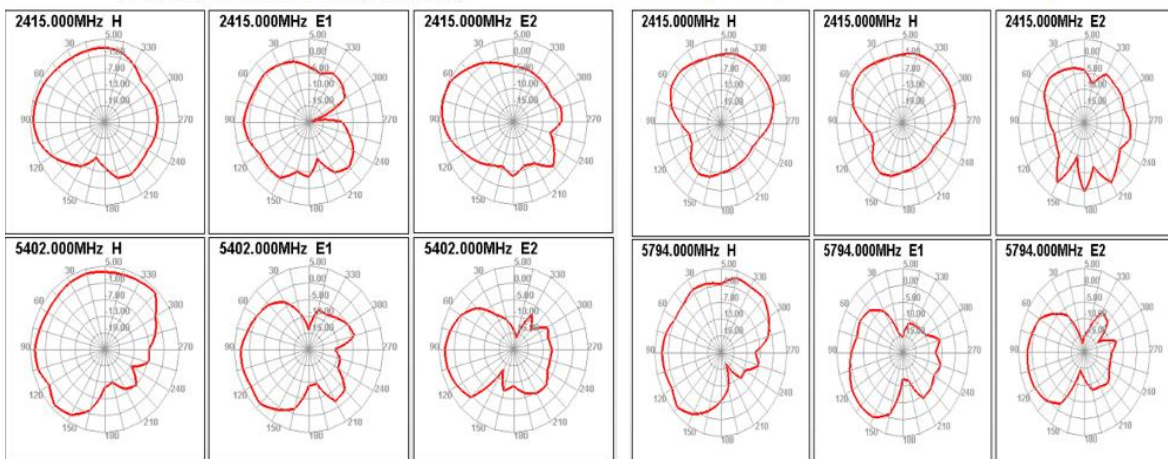
5. Antenna Passive Performance - 3D Total Gain Pattern



6. Antenna Passive Performance - 2D Total Gain Pattern

[Ant0, 2D Total Gain Pattern]

[Ant1, 2D Total Gain Pattern]

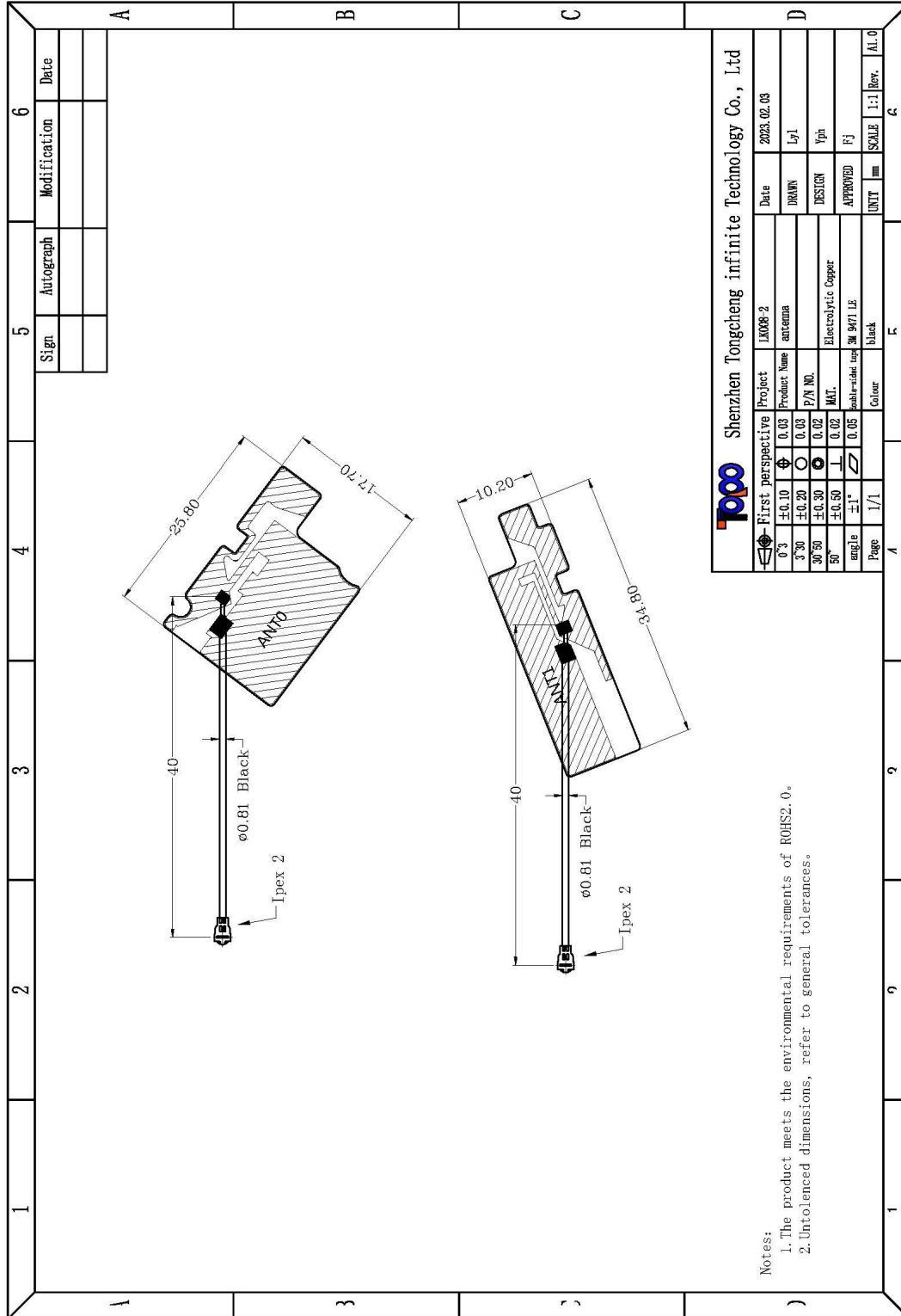




7. Antenna ANT0 efficiency gain:

Freq (MHz)	Effi (%)	Gain (dBi)	Freq (MHz)	Effi (%)	Gain (dBi)
2400	44.86	2.72	5150	42.75	1.05
2405	44.95	2.83	5178	36.62	0.7
2410	45.55	2.83	5206	40.23	0.99
2415	46.49	2.79	5234	43.11	1.76
2420	47.06	2.81	5262	38.66	1.59
2425	46.8	2.86	5290	40.3	2.14
2430	46.72	2.76	5318	43.91	2.55
2435	46.63	2.57	5346	44.97	2.58
2440	46.81	2.48	5374	49.71	3.07
2445	46.62	2.53	5402	54.69	3.69
2450	44.27	2.15	5430	46.69	2.87
2455	45.14	2.13	5458	47.44	2.99
2460	46.33	2.14	5486	45.67	2.57
2465	46.92	2.27	5514	43.66	2.32
2470	46.31	2.22	5542	43.26	1.81
2475	46.71	2.26	5570	45.88	1.89
2480	46.97	2.2	5598	46.36	1.92
2485	46.82	2.3	5626	50.07	2.26
2490	48.13	2.54	5654	48.67	1.98
2495	48.23	2.45	5682	47.6	1.6
2500	47.21	2.27	5710	45.13	1.85
			5738	44.51	1.88
			5766	43.57	2.14
			5794	46.17	2.44
			5822	46.66	2.6
			5850	50.2	2.83

8.Lineplot



9.