
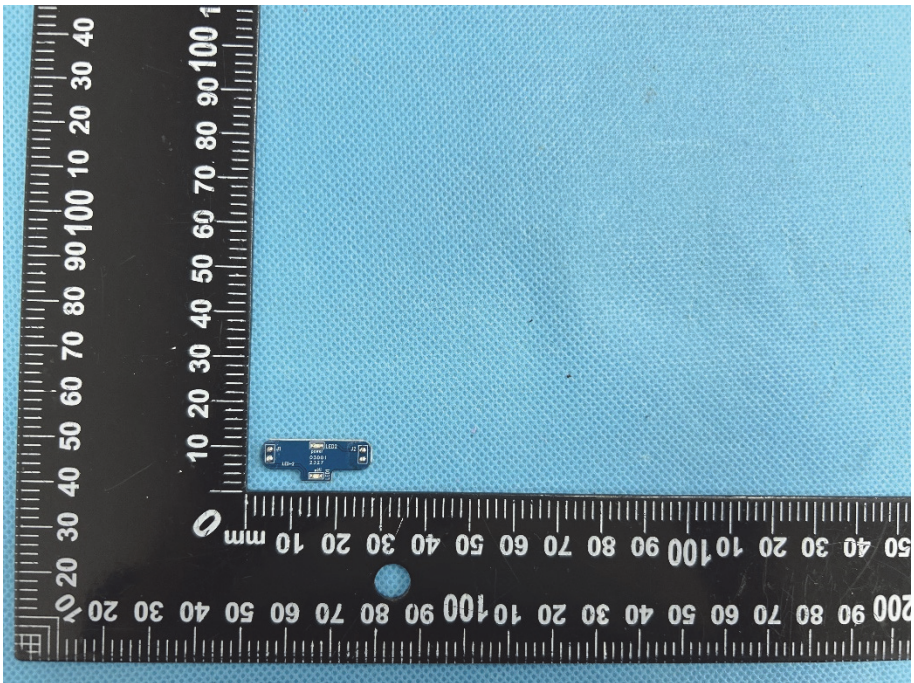
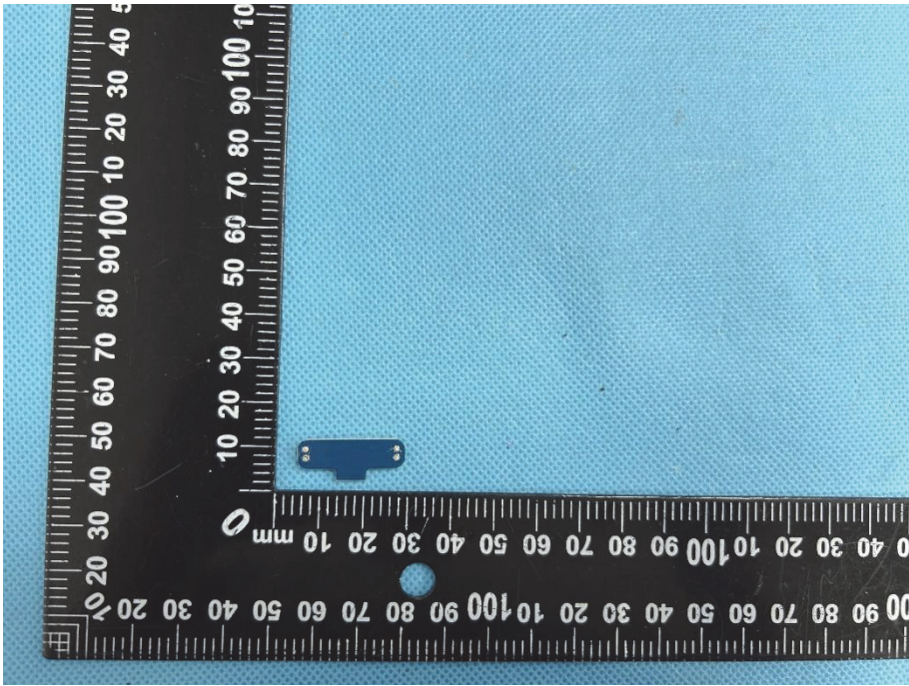
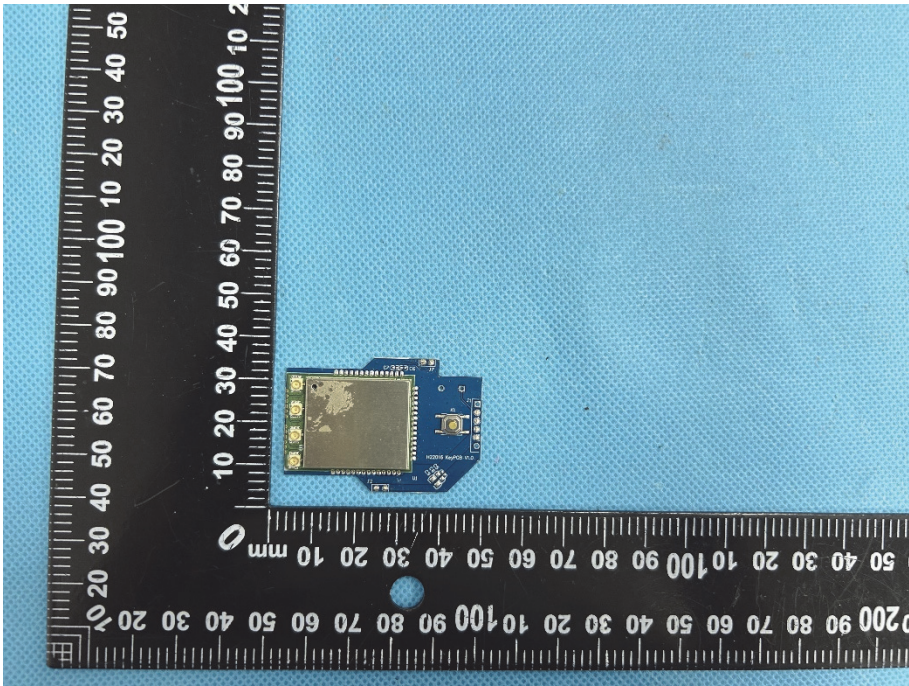
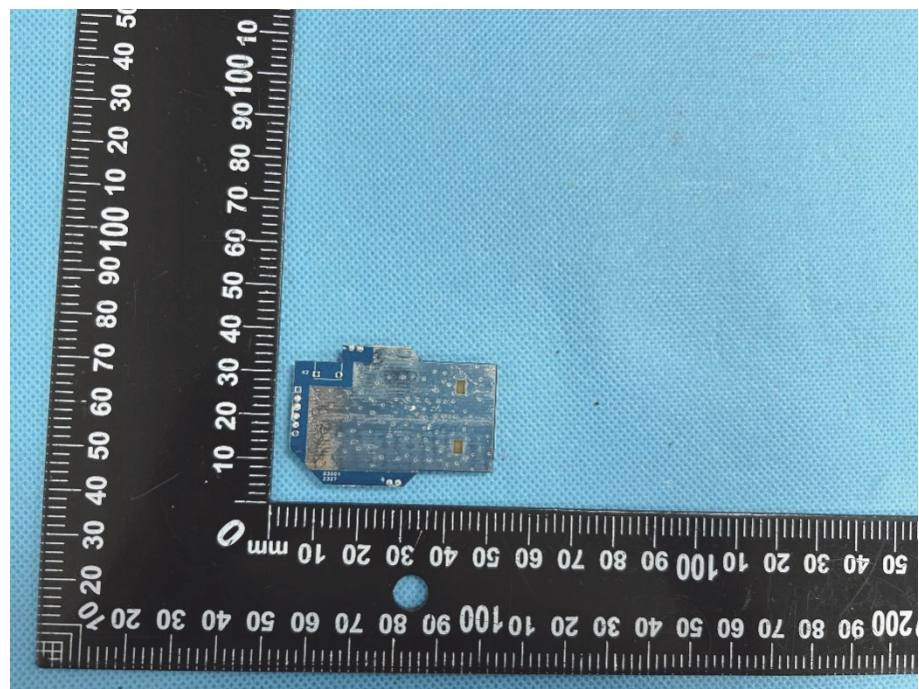


EXHIBIT 3 - EUT INTERNAL PHOTOGRAPHS

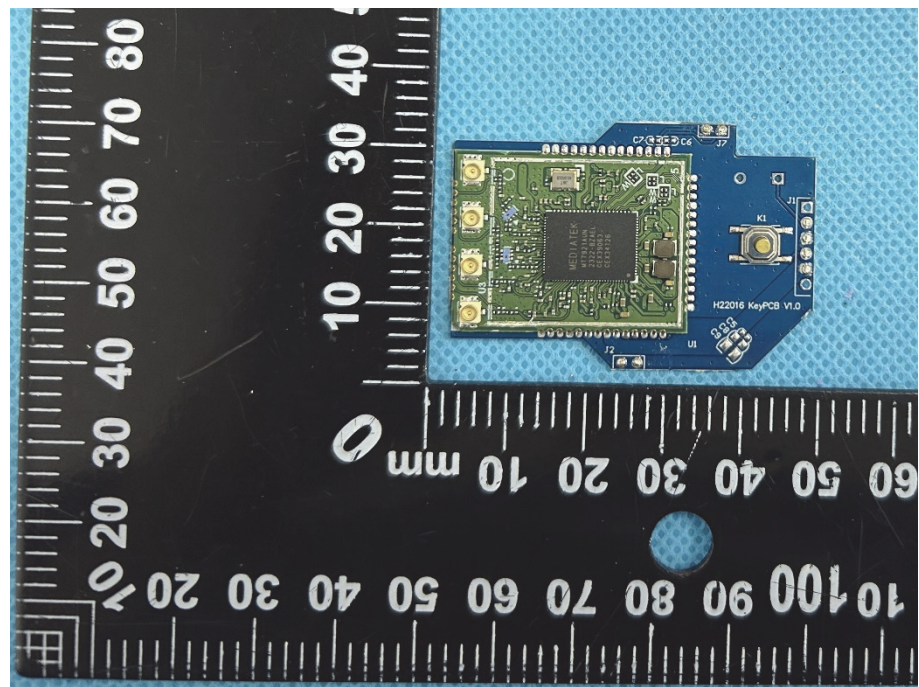
<p>EUT Housing and Board View 1</p>	 <p>A photograph showing the EUT housing and board. The housing is a black plastic shell, and the board is a blue printed circuit board (PCB) with various components. A black cable with a yellow connector is attached to the board. A black ruler with white markings is placed vertically and horizontally for scale. The ruler shows measurements in millimeters and centimeters. The background is a light blue textured surface.</p>
<p>Solder Board-Component View 1</p>	 <p>A close-up photograph of a solder board component. The component is a small, rectangular blue PCB with several components soldered onto it. A black ruler with white markings is placed vertically and horizontally for scale. The ruler shows measurements in millimeters and centimeters. The background is a light blue textured surface.</p>

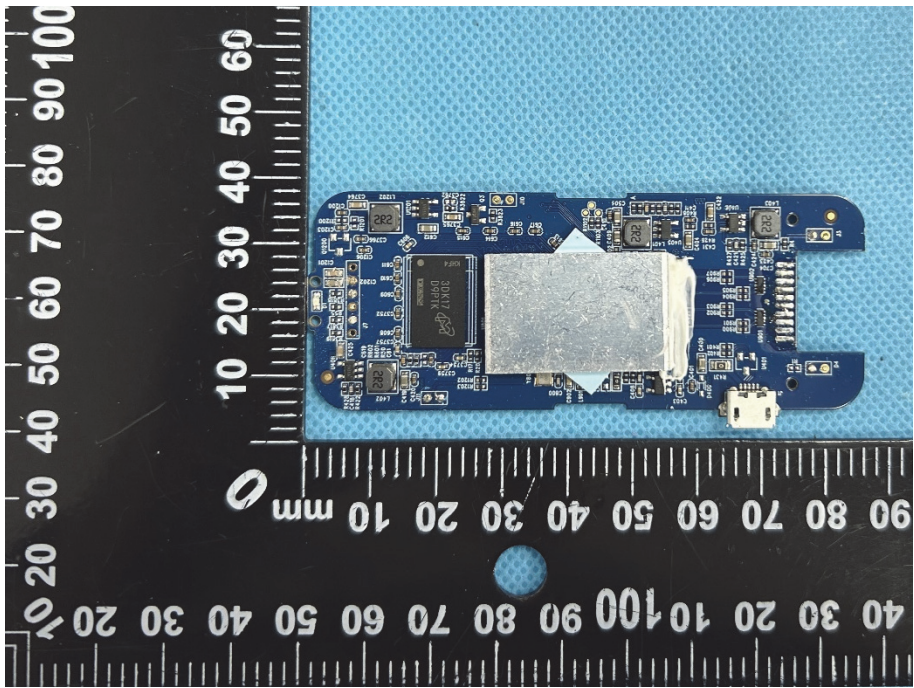
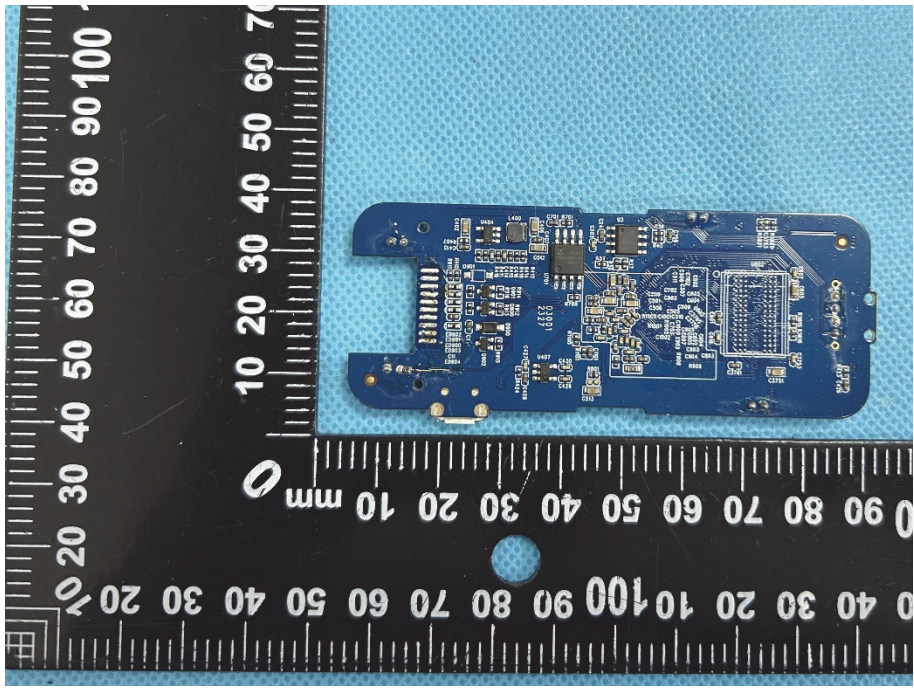
<p>Solder Board-Component View 2</p>	 A photograph showing a small, blue, rectangular solder board component. The component is positioned on a blue textured surface. A black ruler with white markings is placed to the left and bottom of the component for scale. The ruler shows measurements in millimeters, with the component's length being approximately 10 mm and its width approximately 5 mm. The component has two small circular solder points on its top edge.
<p>Solder Board-Component View 3</p>	 A photograph showing a larger, blue, rectangular solder board component. The component is positioned on a blue textured surface. A black ruler with white markings is placed to the left and bottom of the component for scale. The ruler shows measurements in millimeters, with the component's length being approximately 100 mm and its width approximately 50 mm. The component has a large, square, gold-colored solder pad on its top surface and several smaller components and solder points on its bottom surface.

**Solder
Board-Component
View 4**



**Solder
Board-Component
View 5**



<p>Solder Board-Component View 6</p>	 <p>A photograph of a blue printed circuit board (PCB) component, labeled 'View 6'. The component is rectangular with rounded corners and features a large, irregular silver solder mask covering a significant portion of its top surface. It is populated with various electronic components, including integrated circuits, resistors, and capacitors. The component is placed on a blue textured background. A black ruler with white markings is positioned to the left of the component, showing a scale from 0 to 100 millimeters. The ruler is oriented vertically, with the 0 mark at the top and the 100 mark at the bottom.</p>
<p>Solder Board-Component View 7</p>	 <p>A photograph of the same blue PCB component, labeled 'View 7', showing the reverse side. The component is populated with various electronic components, including integrated circuits, resistors, and capacitors. It is placed on a blue textured background. A black ruler with white markings is positioned to the left of the component, showing a scale from 0 to 100 millimeters. The ruler is oriented vertically, with the 0 mark at the top and the 100 mark at the bottom.</p>

