


EMC TEST REPORT



Report No.: 17070445-FCC-E

Supersede Report No: N/A

Applicant	Telecell Mobile (H.K) Ltd.	
Product Name	Mobile Phone	
Model No.	ATRIUM II F55L2	
Serial No.	N/A	
Test Standard	FCC Part 15 Subpart B Class B:2016, ANSI C63.4: 2014	
Test Date	June 16 to August 09, 2017	
Issue Date	August 10, 2017	
Test Result	<input checked="" type="checkbox"/> Pass <input type="checkbox"/> Fail	
Equipment complied with the specification	<input checked="" type="checkbox"/>	
Equipment did not comply with the specification	<input type="checkbox"/>	
<i>Evans He</i>	<i>David Huang</i>	
Evans He Test Engineer	David Huang Checked By	
This test report may be reproduced in full only Test result presented in this test report is applicable to the tested sample only		

Issued by:

SIEMIC (SHENZHEN-CHINA) LABORATORIES

Zone A, Floor 1, Building 2 Wan Ye Long Technology Park

South Side of Zhoushi Road, Bao' an District, Shenzhen, Guangdong China 518108

Phone: +86 0755 2601 4629801 Email: China@siemic.com.cn

Laboratories Introduction

SIEMIC, headquartered in the heart of Silicon Valley, with superior facilities in US and Asia, is one of the leading independent testing and certification facilities providing customers with one-stop shop services for Compliance Testing and Global Certifications.



In addition to testing and certification, SIEMIC provides initial design reviews and compliance management throughout a project. Our extensive experience with China, Asia Pacific, North America, European, and International compliance requirements, assures the fastest, most cost effective way to attain regulatory compliance for the global markets.

Accreditations for Conformity Assessment

Country/Region	Scope
USA	EMC, RF/Wireless, SAR, Telecom
Canada	EMC, RF/Wireless, SAR, Telecom
Taiwan	EMC, RF, Telecom, SAR, Safety
Hong Kong	RF/Wireless, SAR, Telecom
Australia	EMC, RF, Telecom, SAR, Safety
Korea	EMI, EMS, RF, SAR, Telecom, Safety
Japan	EMI, RF/Wireless, SAR, Telecom
Singapore	EMC, RF, SAR, Telecom
Europe	EMC, RF, SAR, Telecom, Safety

Test Report	17070445-FCC-E
Page	3 of 39

This page has been left blank intentionally.

CONTENTS

1. REPORT REVISION HISTORY	5
2. CUSTOMER INFORMATION.....	5
3. TEST SITE INFORMATION	5
4. EQUIPMENT UNDER TEST (EUT) INFORMATION	6
5. TEST SUMMARY	9
6. MEASUREMENTS, EXAMINATION AND DERIVED RESULTS.....	10
6.1 AC POWER LINE CONDUCTED EMISSIONS.....	10
6.2 RADIATED EMISSIONS.....	16
ANNEX A. TEST INSTRUMENT.....	21
ANNEX B. EUT AND TEST SETUP PHOTOGRAPHS.....	22
ANNEX C. TEST SETUP AND SUPPORTING EQUIPMENT.....	35
ANNEX D. USER MANUAL / BLOCK DIAGRAM / SCHEMATICS / PARTLIST	38
ANNEX E. DECLARATION OF SIMILARITY	39

1. Report Revision History

Report No.	Report Version	Description	Issue Date
17070445-FCC-E	NONE	Original	August 10, 2017

2. Customer information

Applicant Name	Telecell Mobile (H.K) Ltd.
Applicant Add	RM 801 Metro Ctr II, 21 Lam Hing Street, Kln Bay, Hong Kong
Manufacturer	Telecell Mobile (H.K) Ltd.
Manufacturer Add	RM 801 Metro Ctr II, 21 Lam Hing Street, Kln Bay, Hong Kong

3. Test site information

Lab performing tests	SIEMIC (Shenzhen-China) LABORATORIES
Lab Address	Zone A, Floor 1, Building 2 Wan Ye Long Technology Park South Side of Zhoushi Road, Bao' an District, Shenzhen, Guangdong China 518108
FCC Test Site No.	535293
IC Test Site No.	4842E-1
Test Software of Radiated Emission	Radiated Emission Program-To Shenzhen v2.0
Test Software of Conducted Emission	EZ-EMC(ver.lcp-03A1)

4. Equipment under Test (EUT) Information

Description of EUT:	Mobile Phone
Main Model:	ATRIUM II F55L2
Serial Model:	N/A
Antenna Gain:	<p>GSM850: -1.31dBi PCS1900: -0.35dBi UMTS-FDD Band V: -1.31dBi UMTS-FDD Band IV: -0.53dBi UMTS-FDD Band II: -0.35dBi LTE Band II: -0.82dBi LTE Band IV: -0.24dBi LTE Band V: -1.31dBi LTE Band VII: 0.62dBi LTE Band XII: -1.68dBi LTE Band XVII: -1.68dBi WIFI: -0.49dBi Bluetooth/BLE:-0.49dBi GPS: -0.94dBi</p>
Antenna Type:	PIFA antenna
Input Power:	<p>Adapter: Model: TPA-46B050100UU Input: AC100-240V~50/60Hz,0.2A Output: DC 5.0V,1000mA Battery: Spec: 3.8V</p>
Equipment Category :	JBP
Type of Modulation:	<p>GSM / GPRS: GMSK EGPRS: GMSK,8PSK UMTS-FDD: QPSK LTE Band: QPSK, 16QAM</p>

Test Report	17070445-FCC-E
Page	7 of 39

802.11b/g/n: DSSS, OFDM
Bluetooth: GFSK, π /4DQPSK, 8DPSK
BLE: GFSK
GPS:BPSK

GSM850 TX: 824.2 ~ 848.8 MHz; RX: 869.2 ~ 893.8 MHz
PCS1900 TX: 1850.2 ~ 1909.8 MHz; RX: 1930.2 ~ 1989.8 MHz
UMTS-FDD Band V TX: 826.4 ~ 846.6 MHz; RX: 871.4 ~ 891.6 MHz
UMTS-FDD Band IV TX:1712.4 ~ 1752.6 MHz;
RX : 2112.4 ~ 2152.6 MHz
UMTS-FDD Band II TX:1852.4 ~ 1907.6 MHz;
RX: 1932.4 ~ 1987.6 MHz
LTE Band II TX: 1850.7 ~ 1909.3MHz; RX : 1930.7 ~ 1989.3 MHz
LTE Band IV TX: 1710.7 ~ 1754.3 MHz; RX : 2110.7~ 2154.3 MHz
LTE Band V TX: 824.7~ 848.3 MHz; RX : 869.7 ~ 893.3MHz
LTE Band VII TX: 2502.5 ~ 2567.5 MHz; RX : 2622.5 ~ 2687.5 MHz
LTE Band XII TX:699.7 ~ 715.3 MHz; RX : 729.7~ 745.3MHz
LTE Band XVII TX: 706.5 ~ 713.5 MHz; RX : 736.5 ~ 743.5 MHz
WIFI: 802.11b/g/n(20M): 2412-2462 MHz
WIFI: 802.11n(40M): 2422-2452 MHz
Bluetooth& BLE: 2402-2480 MHz
GPS: 1575.42 MHz

RF Operating Frequency (ies):

GSM 850: 124CH
PCS1900: 299CH
UMTS-FDD Band V: 102CH
UMTS-FDD Band IV: 202CH
UMTS-FDD Band II: 277CH
WIFI :802.11b/g/n(20M): 11CH
WIFI :802.11n(40M): 7CH
Bluetooth: 79CH
BLE: 40CH
GPS:1CH

Number of Channels:

Port: USB Port, Earphone Port

Trade Name : FIGO

FCC ID: 2ADX3F55L2

5. Test Summary

The product was tested in accordance with the following specifications.

All testing has been performed according to below product classification:

FCC Rules	Description of Test	Result
§15.107; ANSI C63.4: 2014	AC Power Line Conducted Emissions	Compliance
§15.109; ANSI C63.4: 2014	Radiated Emissions	Compliance

Measurement Uncertainty

Parameter	Uncertainty
AC Power Line Conducted Emissions (150kHz~30MHz)	±3.11dB
Radiated Emission(30MHz~1GHz)	±5.12dB
Radiated Emission(1GHz~6GHz)	±5.34dB

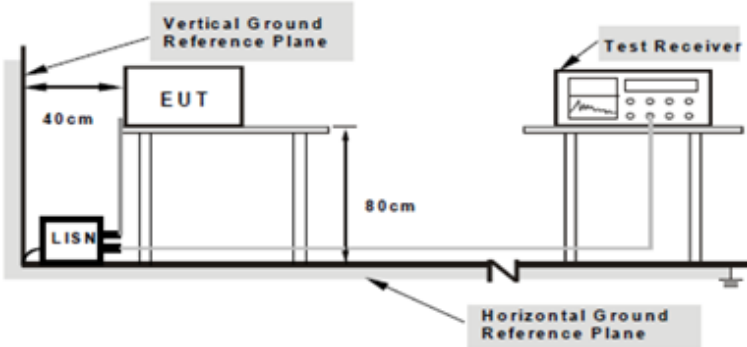
6. Measurements, Examination And Derived Results

6.1 AC Power Line Conducted Emissions

Temperature	25 °C
Relative Humidity	55%
Atmospheric Pressure	1012mbar
Test date :	July 10, 2017
Tested By :	Evans He

Requirement(s):

Spec	Item	Requirement	Applicable														
47CFR§15.107	a)	<p>For Low-power radio-frequency devices that is designed to be connected to the public utility (AC) power line, the radio frequency voltage that is conducted back onto the AC power line on any frequency or frequencies, within the band 150 kHz to 30 MHz, shall not exceed the limits in the following table, as measured using a 50 [mu] H/50 ohms line impedance stabilization network (LISN). The lower limit applies at the boundary between the frequencies ranges.</p> <table border="1"> <thead> <tr> <th rowspan="2">Frequency ranges (MHz)</th> <th colspan="2">Limit (dBµV)</th> </tr> <tr> <th>QP</th> <th>Average</th> </tr> </thead> <tbody> <tr> <td>0.15 ~ 0.5</td> <td>66 – 56</td> <td>56 – 46</td> </tr> <tr> <td>0.5 ~ 5</td> <td>56</td> <td>46</td> </tr> <tr> <td>5 ~ 30</td> <td>60</td> <td>50</td> </tr> </tbody> </table>	Frequency ranges (MHz)	Limit (dBµV)		QP	Average	0.15 ~ 0.5	66 – 56	56 – 46	0.5 ~ 5	56	46	5 ~ 30	60	50	<input checked="" type="checkbox"/>
Frequency ranges (MHz)	Limit (dBµV)																
	QP	Average															
0.15 ~ 0.5	66 – 56	56 – 46															
0.5 ~ 5	56	46															
5 ~ 30	60	50															

Test Setup	 <p>Note: 1.Support units were connected to second LISN. 2.Both of LISNs (AMN) are 80cm from EUT and at least 80cm from other units and other metal planes support units.</p>
------------	---

Procedure	<ol style="list-style-type: none"> The EUT and supporting equipment were set up in accordance with the requirements of the standard on top of a 1.5m x 1m x 0.8m high, non-metallic table. The power supply for the EUT was fed through a 50Ω /50mH EUT LISN, connected to filtered mains.
-----------	--

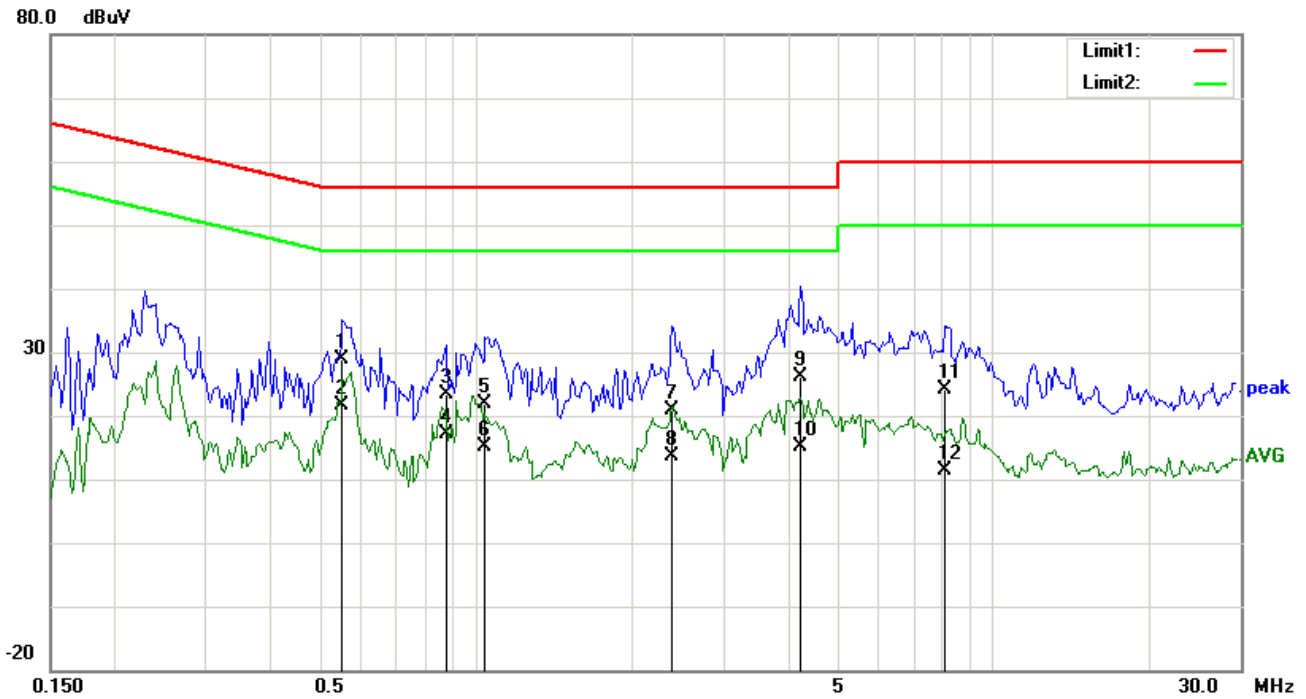
Test Report	17070445-FCC-E
Page	11 of 39

	<ol style="list-style-type: none"> 3. The RF OUT of the EUT LISN was connected to the EMI test receiver via a low-loss coaxial cable. 4. All other supporting equipment were powered separately from another main supply. 5. The EUT was switched on and allowed to warm up to its normal operating condition. 6. A scan was made on the NEUTRAL line (for AC mains) or Earth line (for DC power) over the required frequency range using an EMI test receiver. 7. High peaks, relative to the limit line, The EMI test receiver was then tuned to the selected frequencies and the necessary measurements made with a receiver bandwidth setting of 10 kHz. 8. Step 7 was then repeated for the LIVE line (for AC mains) or DC line (for DC power).
Remark	
Result	<input checked="" type="checkbox"/> Pass <input type="checkbox"/> Fail

Test Data Yes N/A

Test Plot Yes (See below) N/A

Test Mode : USB Mode

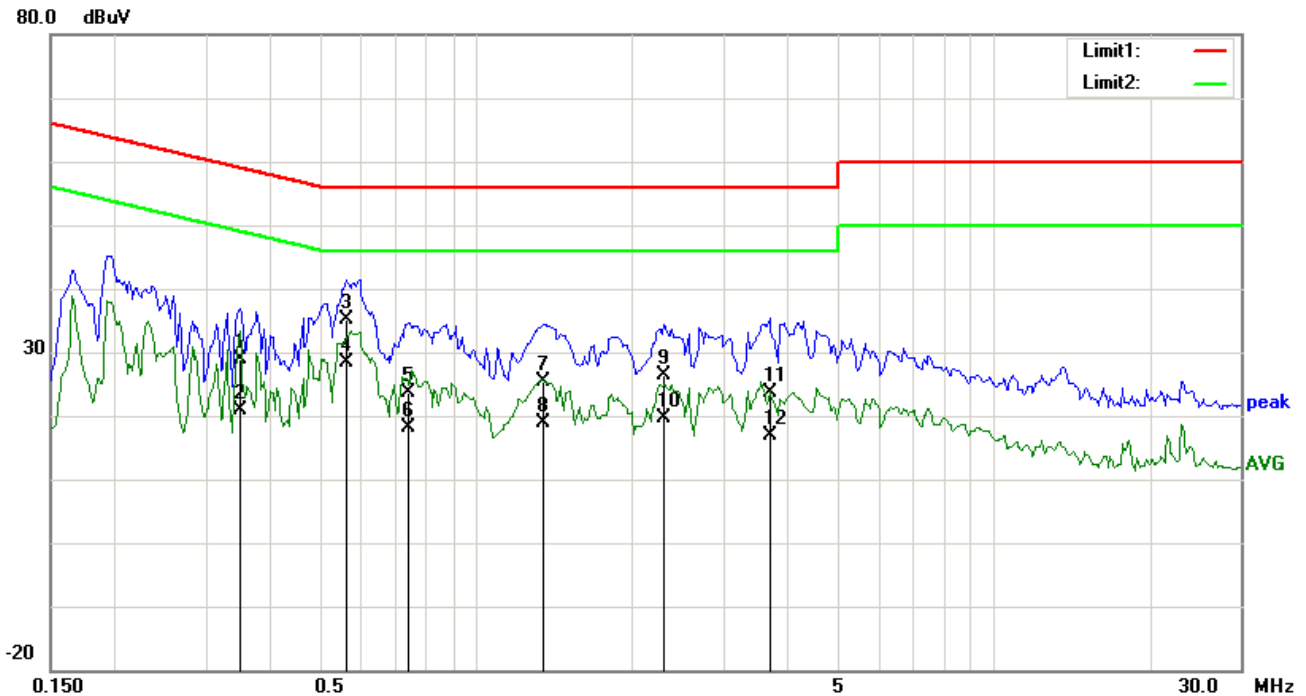


Test Data

Phase Line Plot at 120Vac, 60Hz

No.	P/L	Frequency	Reading	Detector	Corrected	Result	Limit	Margin
		(MHz)	(dBuV)		(dB)	(dBuV)	(dBuV)	(dB)
1	L1	0.5517	18.80	QP	10.03	28.83	56.00	-27.17
2	L1	0.5517	11.64	AVG	10.03	21.67	46.00	-24.33
3	L1	0.8715	13.32	QP	10.03	23.35	56.00	-32.65
4	L1	0.8715	7.10	AVG	10.03	17.13	46.00	-28.87
5	L1	1.0392	11.95	QP	10.03	21.98	56.00	-34.02
6	L1	1.0392	5.09	AVG	10.03	15.12	46.00	-30.88
7	L1	2.3925	10.85	QP	10.05	20.90	56.00	-35.10
8	L1	2.3925	3.65	AVG	10.05	13.70	46.00	-32.30
9	L1	4.2363	15.97	QP	10.07	26.04	56.00	-29.96
10	L1	4.2363	5.14	AVG	10.07	15.21	46.00	-30.79
11	L1	8.0466	14.00	QP	10.12	24.12	60.00	-35.88
12	L1	8.0466	1.38	AVG	10.12	11.50	50.00	-38.50

Test Mode:	USB Mode
-------------------	-----------------

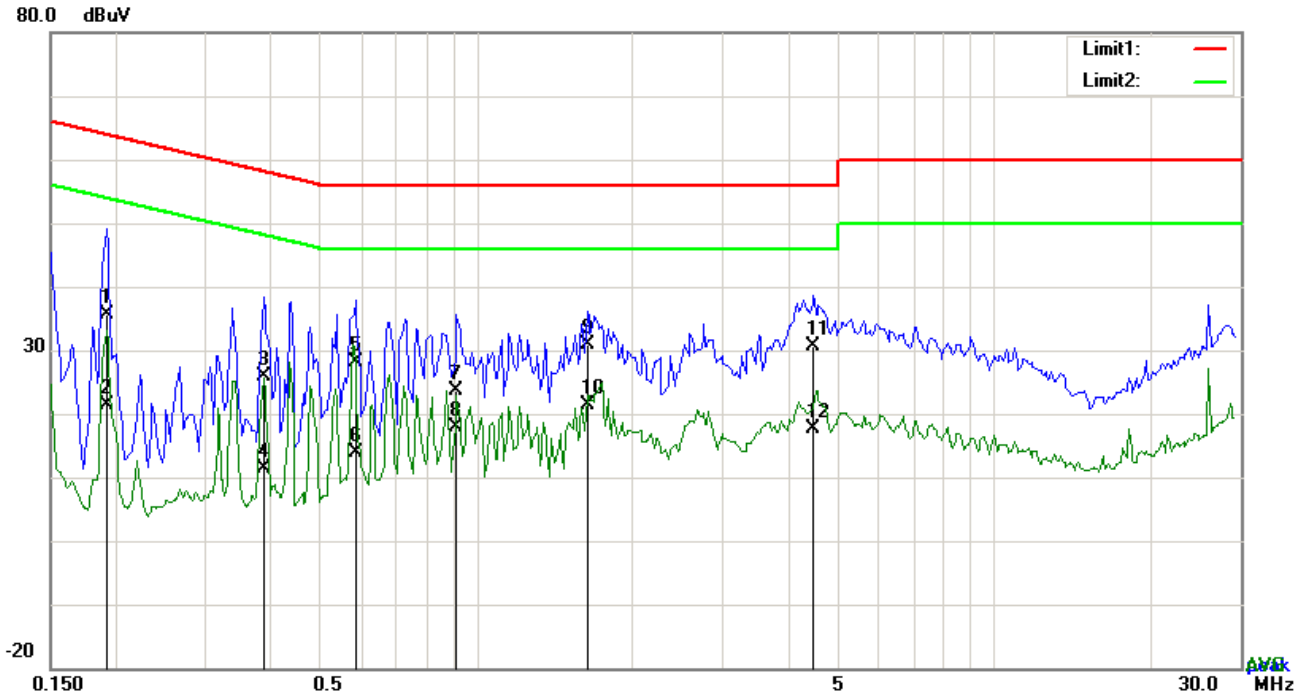


Test Data

Phase Neutral Plot at 120Vac, 60Hz

No.	P/L	Frequency	Reading	Detector	Corrected	Result	Limit	Margin
		(MHz)	(dBuV)		(dB}	(dBuV)	(dBuV)	(dB)
1	N	0.3489	18.95	QP	10.02	28.97	58.99	-30.02
2	N	0.3489	10.88	AVG	10.02	20.90	48.99	-28.09
3	N	0.5595	25.07	QP	10.02	35.09	56.00	-20.91
4	N	0.5595	18.32	AVG	10.02	28.34	46.00	-17.66
5	N	0.7428	13.71	QP	10.02	23.73	56.00	-32.27
6	N	0.7428	8.04	AVG	10.02	18.06	46.00	-27.94
7	N	1.3473	15.29	QP	10.03	25.32	56.00	-30.68
8	N	1.3473	8.74	AVG	10.03	18.77	46.00	-27.23
9	N	2.2989	16.43	QP	10.04	26.47	56.00	-29.53
10	N	2.2989	9.59	AVG	10.04	19.63	46.00	-26.37
11	N	3.6825	13.58	QP	10.06	23.64	56.00	-32.36
12	N	3.6825	6.78	AVG	10.06	16.84	46.00	-29.16

Test Mode :	USB Mode
--------------------	-----------------

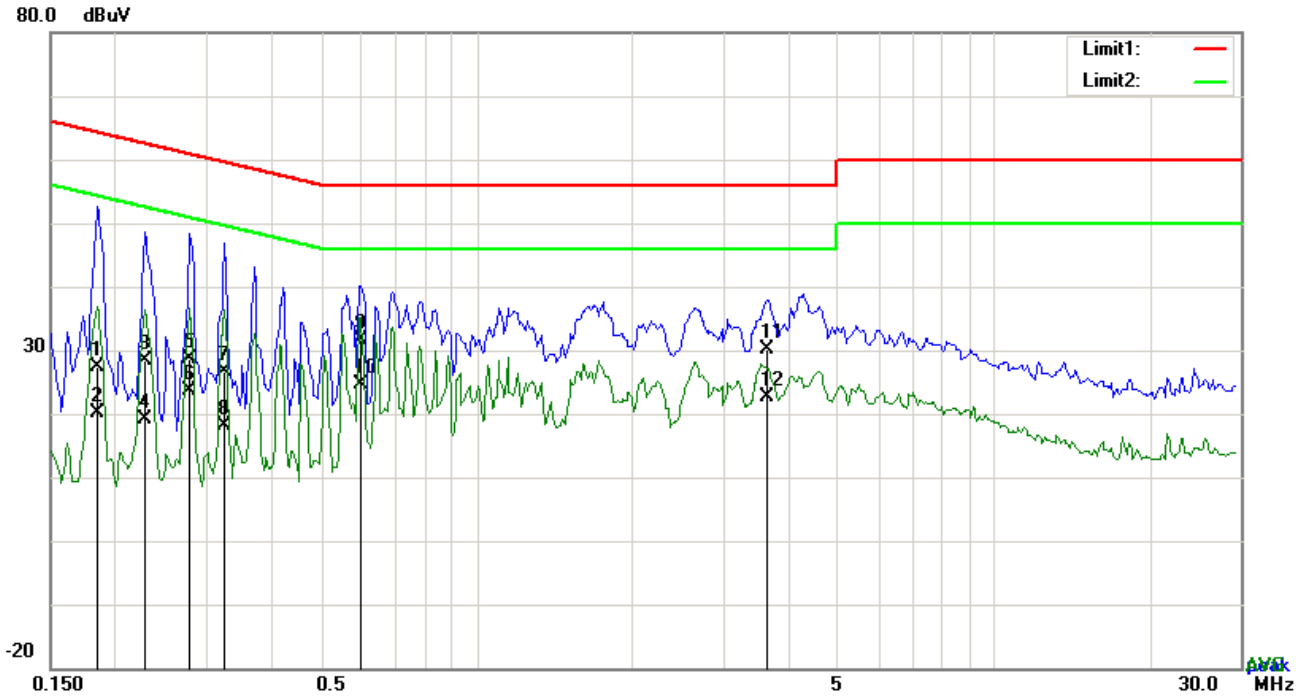


Test Data

Phase Line Plot at 240Vac, 60Hz

No.	P/L	Frequency	Reading	Detector	Corrected	Result	Limit	Margin
		(MHz)	(dBuV)		(dB}	(dBuV)	(dBuV)	(dB)
1	L1	0.1929	25.66	QP	10.03	35.69	63.91	-28.22
2	L1	0.1929	11.42	AVG	10.03	21.45	53.91	-32.46
3	L1	0.3879	15.83	QP	10.03	25.86	58.11	-32.25
4	L1	0.3879	1.30	AVG	10.03	11.33	48.11	-36.78
5	L1	0.5829	18.06	QP	10.03	28.09	56.00	-27.91
6	L1	0.5829	3.96	AVG	10.03	13.99	46.00	-32.01
7	L1	0.9144	13.52	QP	10.03	23.55	56.00	-32.45
8	L1	0.9144	7.74	AVG	10.03	17.77	46.00	-28.23
9	L1	1.6437	20.80	QP	10.04	30.84	56.00	-25.16
10	L1	1.6437	11.46	AVG	10.04	21.50	46.00	-24.50
11	L1	4.4820	20.47	QP	10.07	30.54	56.00	-25.46
12	L1	4.4820	7.67	AVG	10.07	17.74	46.00	-28.26

Test Mode : USB Mode



Test Data

Phase Neutral Plot at 240Vac, 60Hz

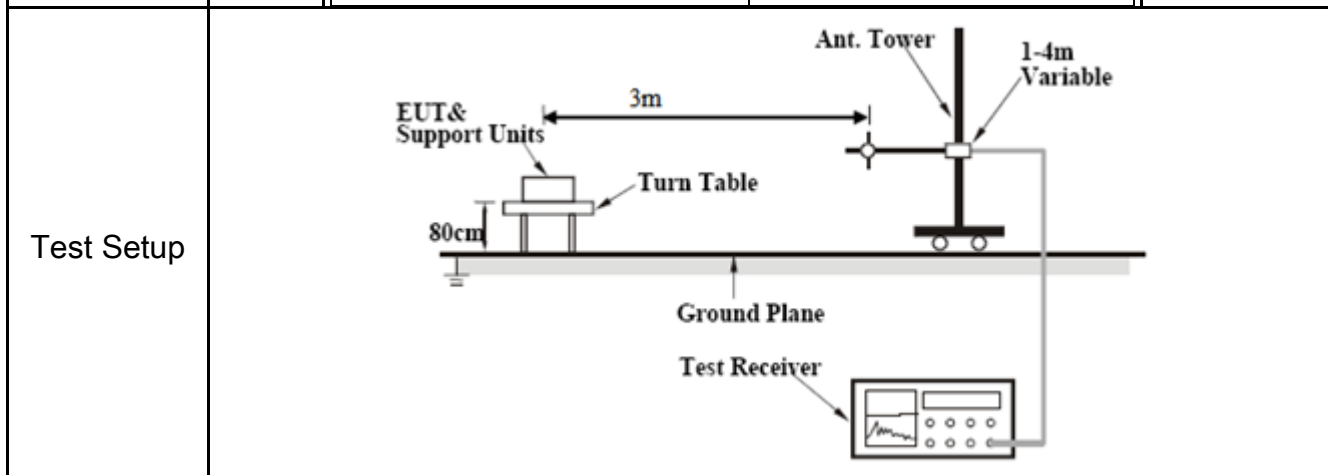
No.	P/L	Frequency	Reading	Detector	Corrected	Result	Limit	Margin
		(MHz)	(dBuV)		(dB}	(dBuV)	(dBuV)	(dB)
1	N	0.1851	17.36	QP	10.02	27.38	64.25	-36.87
2	N	0.1851	10.23	AVG	10.02	20.25	54.25	-34.00
3	N	0.2280	18.24	QP	10.02	28.26	62.52	-34.26
4	N	0.2280	9.12	AVG	10.02	19.14	52.52	-33.38
5	N	0.2787	18.50	QP	10.02	28.52	60.85	-32.33
6	N	0.2787	13.71	AVG	10.02	23.73	50.85	-27.12
7	N	0.3255	16.73	QP	10.02	26.75	59.57	-32.82
8	N	0.3255	8.18	AVG	10.02	18.20	49.57	-31.37
9	N	0.5985	21.71	QP	10.02	31.73	56.00	-24.27
10	N	0.5985	14.62	AVG	10.02	24.64	46.00	-21.36
11	N	3.6591	20.13	QP	10.06	30.19	56.00	-25.81
12	N	3.6591	12.63	AVG	10.06	22.69	46.00	-23.31

6.2 Radiated Emissions

Temperature	24 °C
Relative Humidity	54%
Atmospheric Pressure	1020mbar
Test date :	July 29, 2017
Tested By :	Evans He

Requirement(s):

Spec	Item	Requirement	Applicable										
47CFR§15.109(d)	a)	Except higher limit as specified elsewhere in other section, the emissions from the low-power radio-frequency devices shall not exceed the field strength levels specified in the following table and the level of any unwanted emissions shall not exceed the level of the fundamental emission. The tighter limit applies at the band edges	<input checked="" type="checkbox"/>										
		<table border="1"> <thead> <tr> <th>Frequency range (MHz)</th> <th>Field Strength ($\mu\text{V/m}$)</th> </tr> </thead> <tbody> <tr> <td>30 – 88</td> <td>100</td> </tr> <tr> <td>88 – 216</td> <td>150</td> </tr> <tr> <td>216 - 960</td> <td>200</td> </tr> <tr> <td>Above 960</td> <td>500</td> </tr> </tbody> </table>		Frequency range (MHz)	Field Strength ($\mu\text{V/m}$)	30 – 88	100	88 – 216	150	216 - 960	200	Above 960	500
		Frequency range (MHz)		Field Strength ($\mu\text{V/m}$)									
		30 – 88		100									
		88 – 216		150									
216 - 960	200												
Above 960	500												



Procedure	<ol style="list-style-type: none"> 1. The EUT was switched on and allowed to warm up to its normal operating condition. 2. The test was carried out at the selected frequency points obtained from the EUT characterization. Maximization of the emissions, was carried out by rotating the EUT, changing the antenna polarization, and adjusting the antenna height in the following manner: <ol style="list-style-type: none"> a. Vertical or horizontal polarization (whichever gave the higher emission level
-----------	---

	<p>over a full rotation of the EUT) was chosen.</p> <p>b. The EUT was then rotated to the direction that gave the maximum emission.</p> <p>c. Finally, the antenna height was adjusted to the height that gave the maximum emission.</p> <p>3. The resolution bandwidth and video bandwidth of test receiver/spectrum analyzer is 120 kHz for Quasiy Peak detection at frequency below 1GHz.</p> <p>4. The resolution bandwidth of test receiver/spectrum analyzer is 1MHz and video bandwidth is 3MHz with Peak detection for Peak measurement at frequency above 1GHz. The resolution bandwidth of test receiver/spectrum analyzer is 1MHz and the video bandwidth with Peak detection for Average Measurement as below at frequency above 1GHz. ■ 1 kHz (Duty cycle < 98%) □ 10 Hz (Duty cycle > 98%)</p> <p>5. Steps 2 and 3 were repeated for the next frequency point, until all selected frequency points were measured.</p>
Remark	
Result	<input checked="" type="checkbox"/> Pass <input type="checkbox"/> Fail

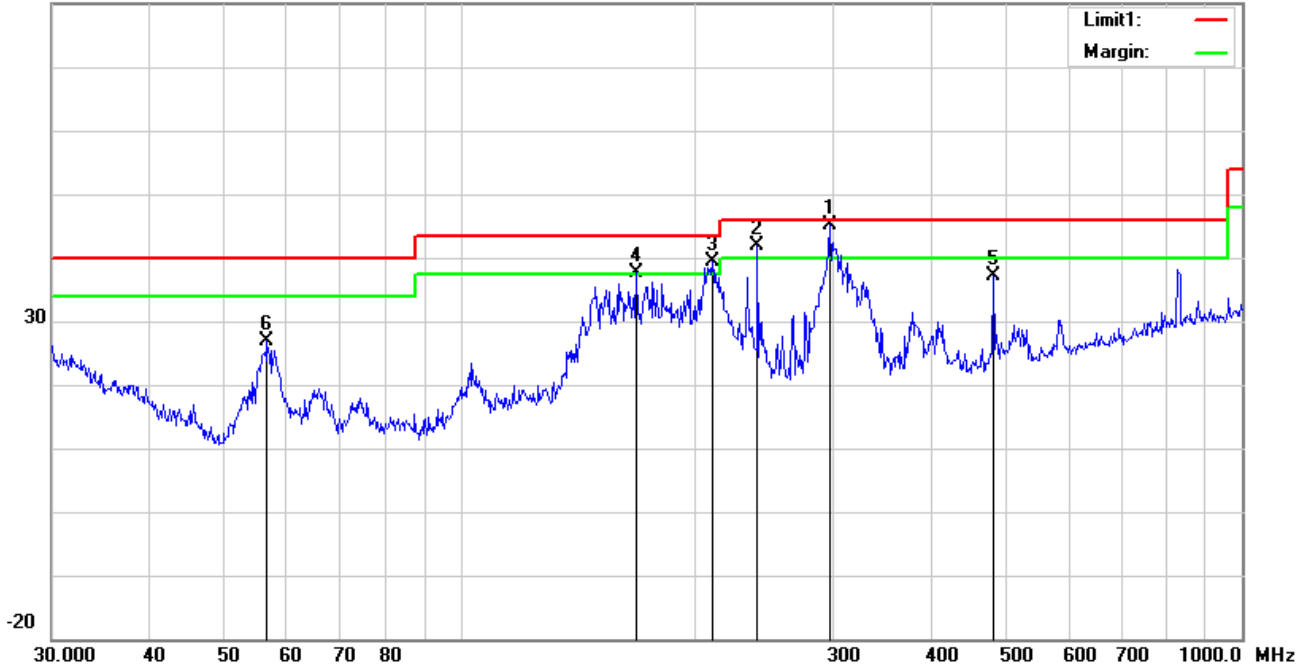
Test Data Yes N/A

Test Plot Yes (See below) N/A

Test Mode :	USB Mode
-------------	----------

Below 1GHz

80.0 dBuV/m

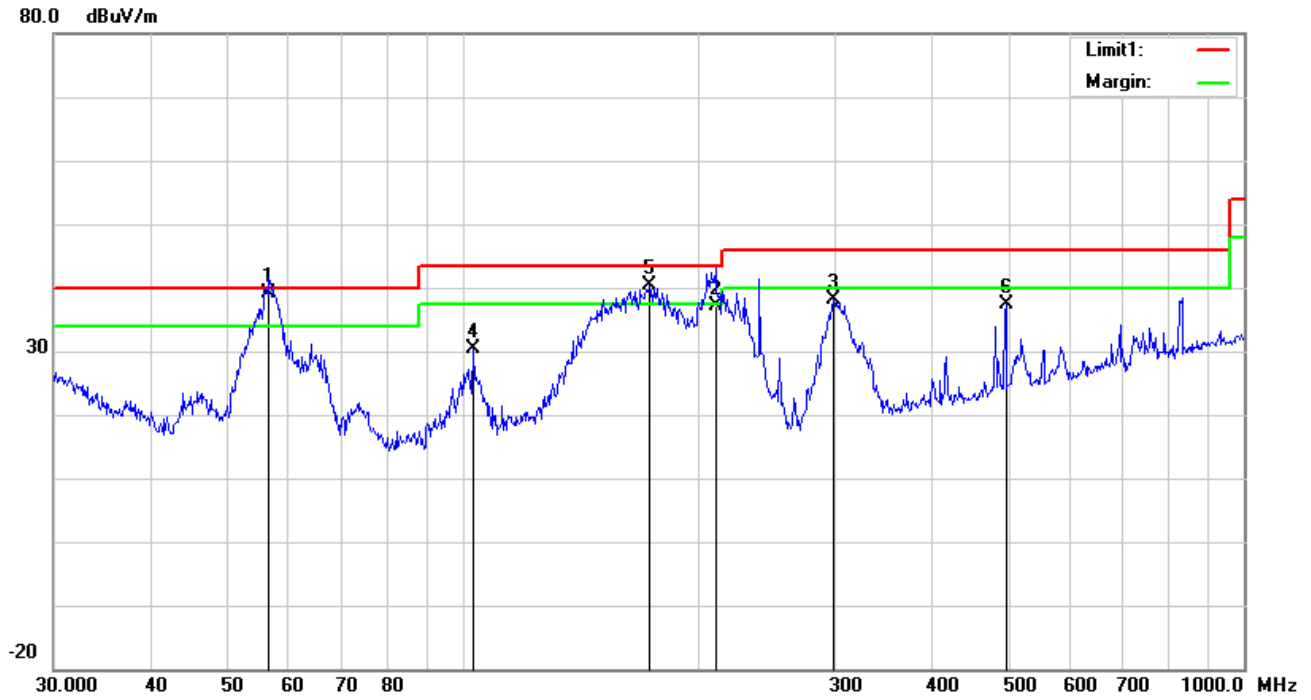


Test Data

Horizontal Polarity Plot @3m

No.	P/L	Frequency (MHz)	Reading (dBuV/m)	Detector	Ant_F (dB/m)	PA_G (dB)	Cab_L (dB)	Result (dBuV/m)	Limit (dBuV/m)	Margin (dB)	Height (cm)	Degree (°)
1	H	297.2241	52.03	QP	13.48	22.29	1.79	45.01	46.00	-0.99	100	261
2	H	239.9873	51.07	QP	11.54	22.31	1.67	41.97	46.00	-4.03	100	308
3	H	210.0482	48.11	QP	11.96	22.36	1.57	39.28	43.50	-4.22	100	125
4	H	167.8243	46.54	QP	11.97	22.26	1.37	37.62	43.50	-5.88	100	253
5	H	480.5276	39.25	peak	17.31	21.85	2.31	37.02	46.00	-8.98	100	177
6	H	56.5929	40.75	peak	7.67	22.40	0.77	26.79	40.00	-13.21	100	175

Below 1GHz



Test Data

Vertical Polarity Plot @3m

No.	P/L	Frequency	Reading	Detector	Ant_F	PA_G	Cab_L	Result	Limit	Margin	Height	Degree
		(MHz)	(dBuV/m)		(dB/m)	(dB)	(dB)	(dBuV/m)	(dBuV/m)	(dB)	(cm)	(°)
1	V	56.5929	53.16	QP	7.67	22.40	0.77	39.20	40.00	-0.80	100	102
2	V	210.7860	46.09	QP	11.95	22.36	1.57	37.25	43.50	-6.25	200	42
3	V	298.2681	45.04	peak	13.52	22.29	1.79	38.06	46.00	-7.94	100	102
4	V	103.0800	40.63	peak	10.94	22.33	1.14	30.38	43.50	-13.12	100	17
5	V	173.8135	49.89	QP	11.49	22.26	1.36	40.48	43.50	-3.02	100	218
6	V	495.9344	39.07	peak	17.62	21.82	2.40	37.27	46.00	-8.73	100	249

Above 1GHz

Frequency (MHz)	Read_level (dBµV/m)	Azimuth	Height (cm)	Polarity (H/V)	Level (dBµV/m)	Factors (dB)	Limit (dBµV/m)	Margin (dB)	Detector (PK/AV)
1456.9	64.36	145	100	V	-18.74	45.62	74	-28.38	PK
1764.3	59.35	109	100	V	-16.74	42.61	74	-31.39	PK
2258.1	56.22	35	100	V	-14.35	41.87	74	-32.13	PK
1658.3	65.76	17	100	H	-17.64	48.12	74	-25.88	PK
1987.5	62.88	219	100	H	-14.97	47.91	74	-26.09	PK
2546.2	57.17	336	100	H	-13.52	43.65	74	-30.35	PK

Note1: The highest frequency of the EUT is 2480 MHz, so the testing has been conformed to $5 \times 2480 \text{MHz} = 12,400 \text{MHz}$.

Note2: The frequency that above 3GHz is mainly from the environment noise.

Note3: The AV measurement performed, more than 20dB below limit so AV test data was not presented.

Annex A. TEST INSTRUMENT

Instrument	Model	Serial #	Cal Date	Cal Due	In use
AC Line Conducted Emissions					
EMI test receiver	ESCS30	8471241027	09/16/2016	09/15/2017	<input checked="" type="checkbox"/>
Line Impedance Stabilization Network	LI-125A	191106	09/24/2016	09/23/2017	<input checked="" type="checkbox"/>
Line Impedance Stabilization Network	LI-125A	191107	09/24/2016	09/23/2017	<input checked="" type="checkbox"/>
ISN	ISN T800	34373	09/24/2016	09/23/2017	<input type="checkbox"/>
Transient Limiter	LIT-153	531118	08/31/2016	08/30/2017	<input checked="" type="checkbox"/>
Radiated Emissions					
EMI test receiver	ESL6	100262	09/16/2016	09/15/2017	<input checked="" type="checkbox"/>
OPT 010 AMPLIFIER (0.1-1300MHz)	8447E	2727A02430	08/31/2016	08/30/2017	<input checked="" type="checkbox"/>
Microwave Preamplifier (1 ~ 26.5GHz)	8449B	3008A02402	03/23/2017	03/22/2018	<input checked="" type="checkbox"/>
Bilog Antenna (30MHz~6GHz)	JB6	A110712	09/20/2016	09/19/2017	<input checked="" type="checkbox"/>
Double Ridge Horn Antenna	AH-118	71259	09/23/2016	09/22/2017	<input checked="" type="checkbox"/>

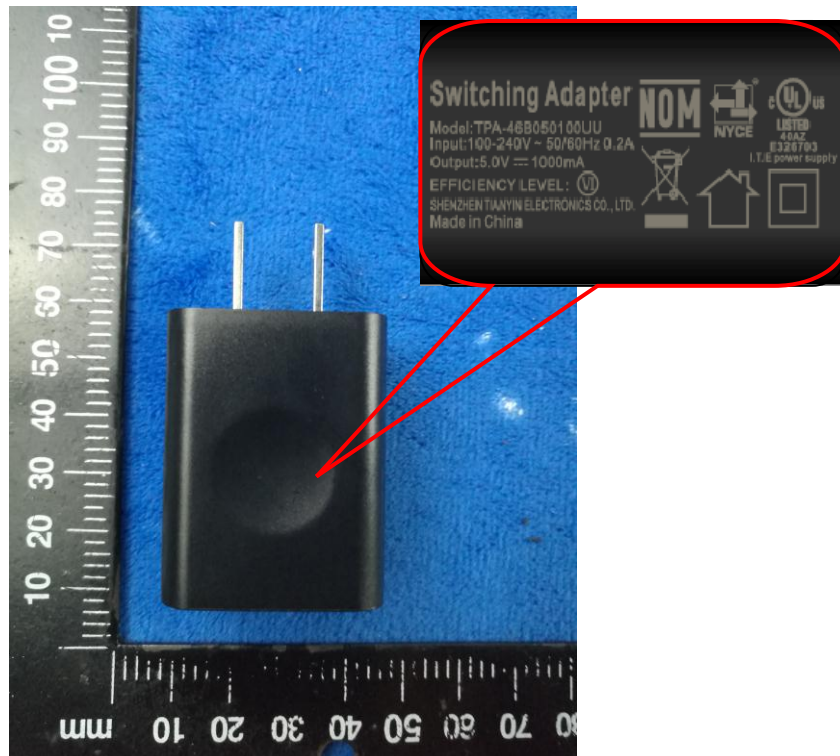
Annex B. EUT And Test Setup Photographs

Annex B.i. Photograph: EUT External Photo

Whole Package View



Adapter - Label View



EUT - Front View



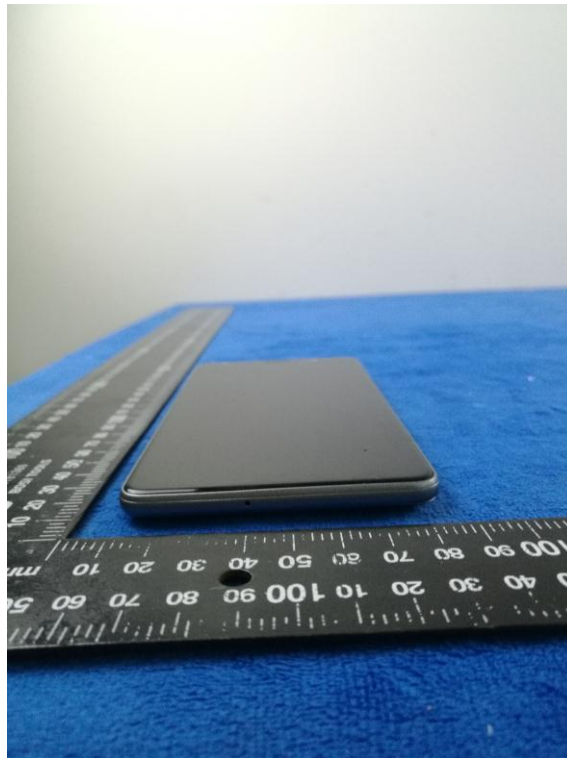
EUT - Rear View



EUT - Top View



EUT - Bottom View



EUT - Left View



EUT - Right View



Annex B.ii. Photograph: EUT Internal Photo

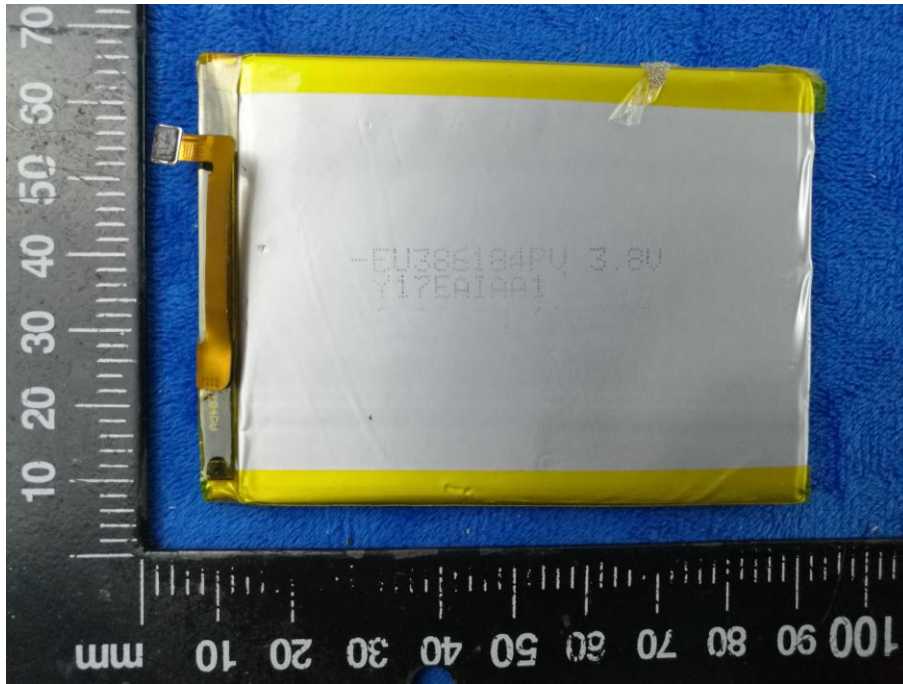
Cover Off - Top View 1



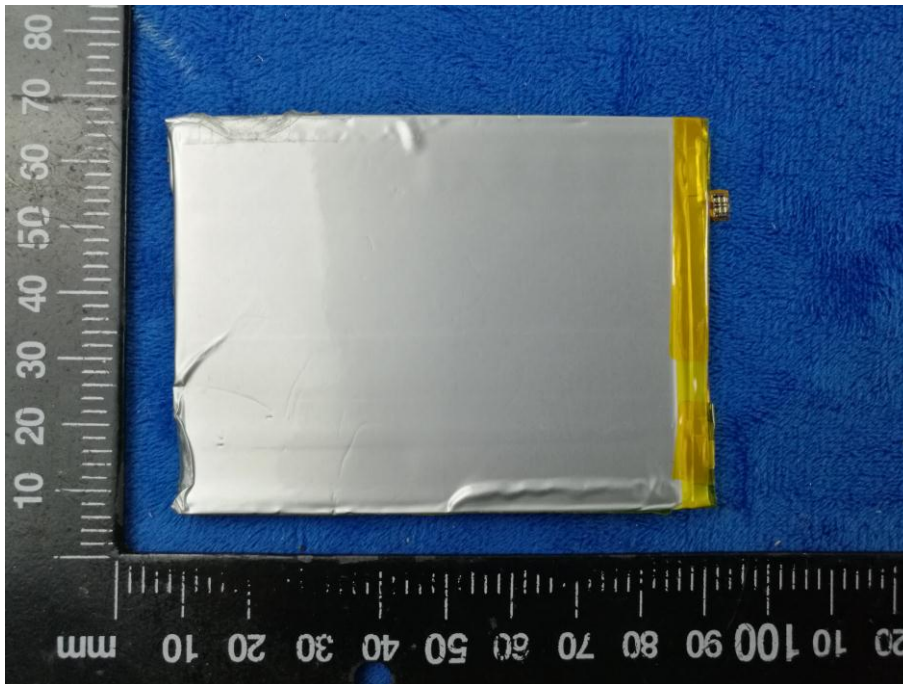
Cover Off - Top View 2



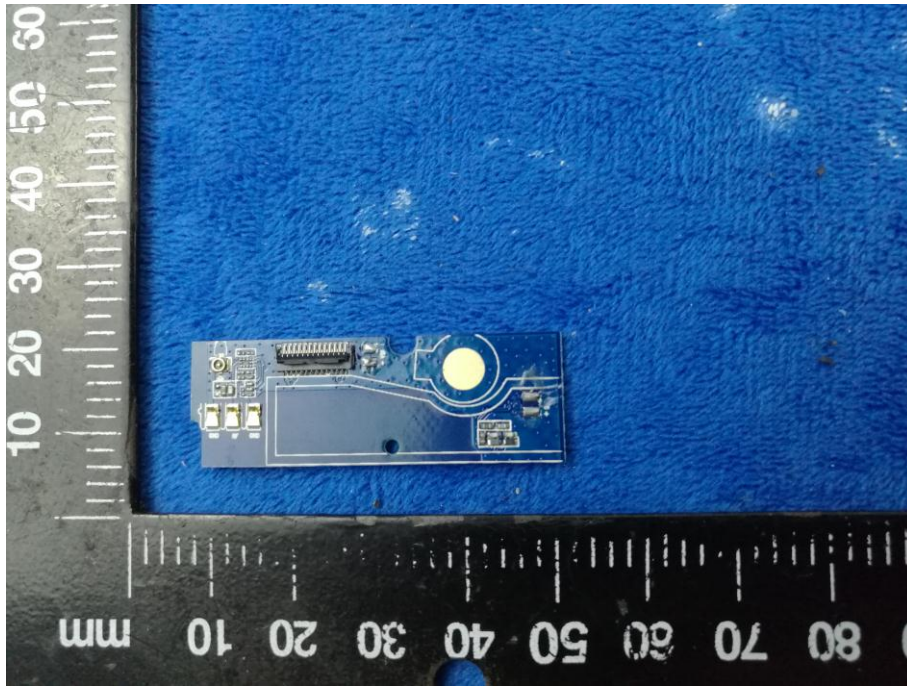
Battery - Front View



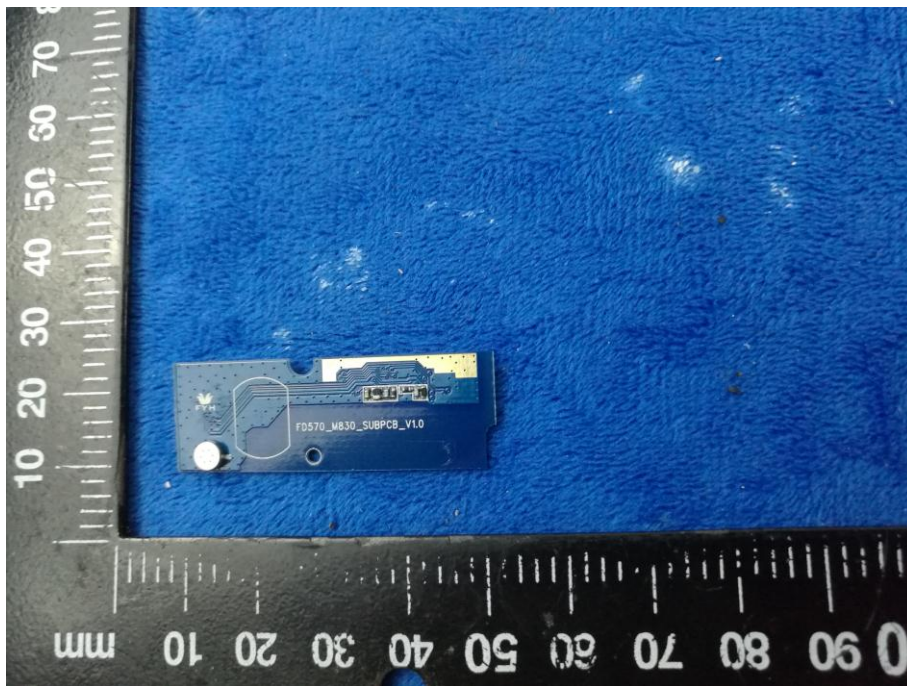
Battery - Rear View



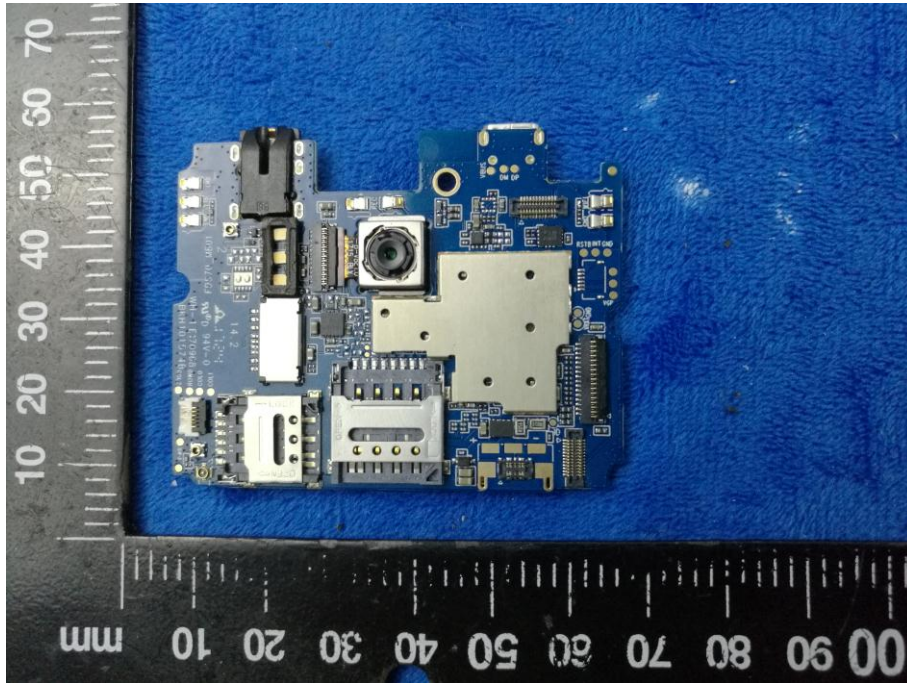
Small Mainboard - Front View



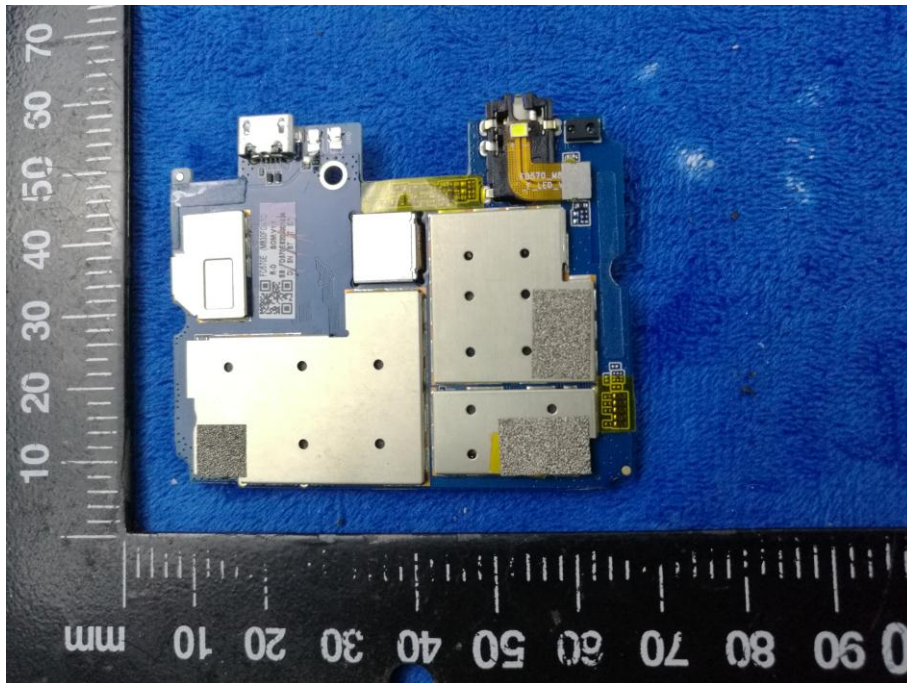
Small Mainboard - Rear View



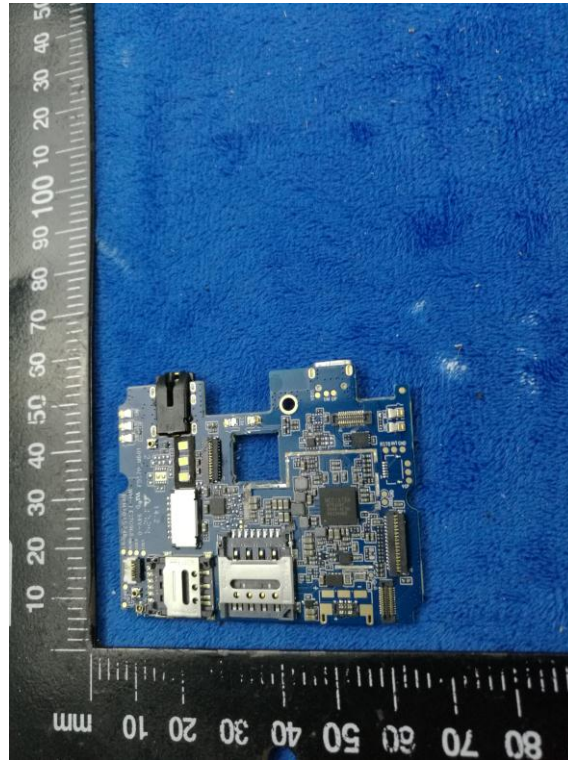
Mainboard with Shielding – Front View



Mainboard with Shielding – Rear View



Mainboard without Shielding – Front View



Mainboard without Shielding – Rear View



LCD – Front View



LCD – Rear View



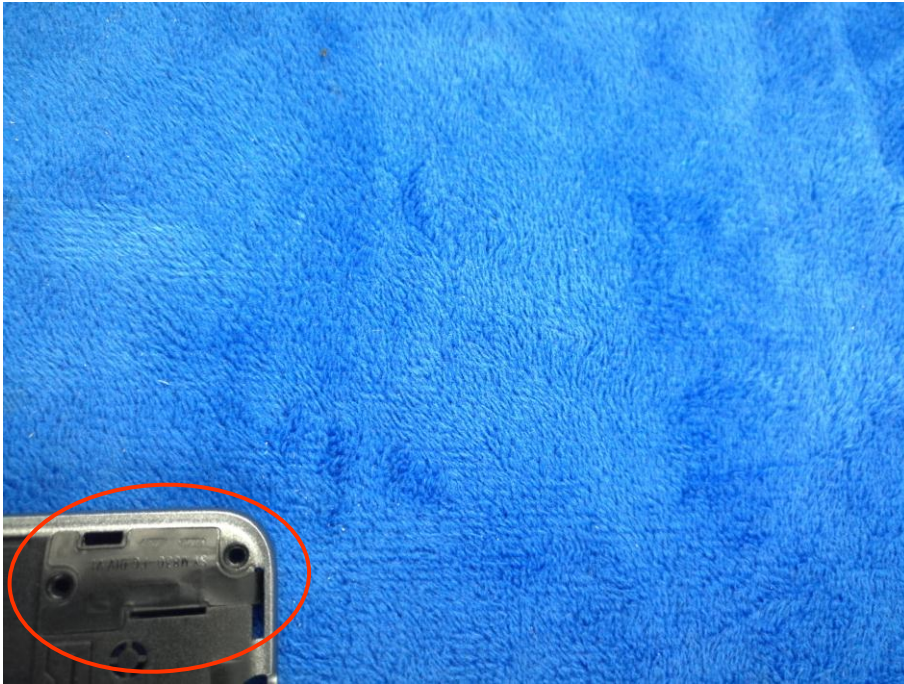
GSM/PCS/UMTS-FDD - Antenna View



WIFI/BT/BLE/GPS - Antenna View



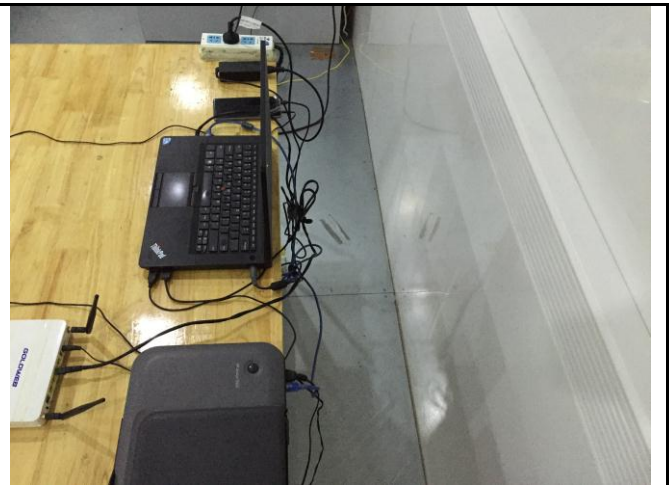
LTE - Antenna View



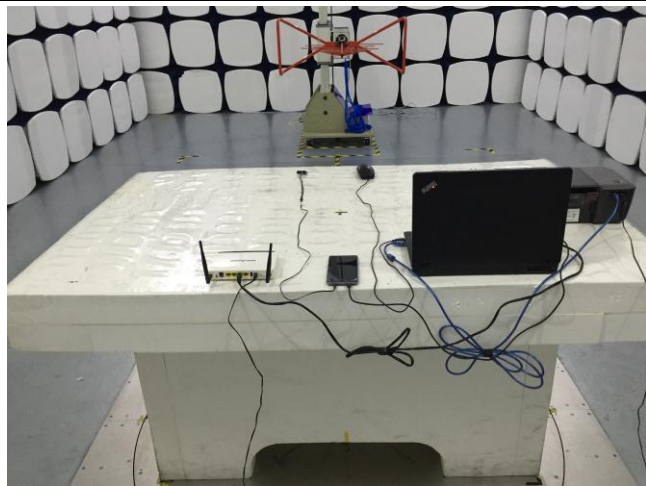
Annex B.iii. Photograph: Test Setup Photo



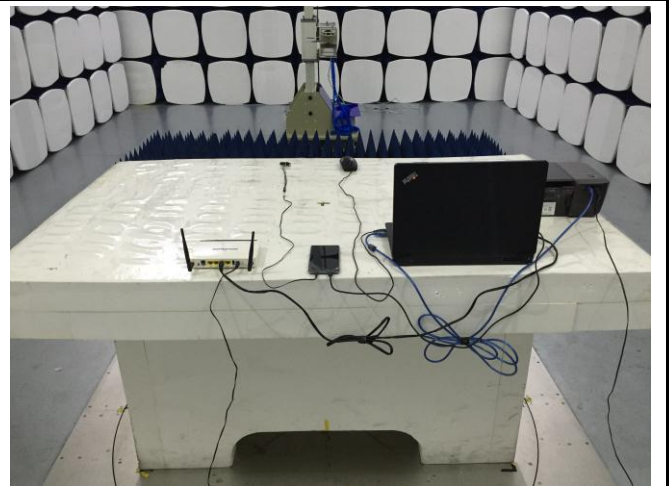
Conducted Emissions Test Setup – Front View



Conducted Emissions Test Setup – Side View



Radiated Emissions Test Setup Below 1GHz

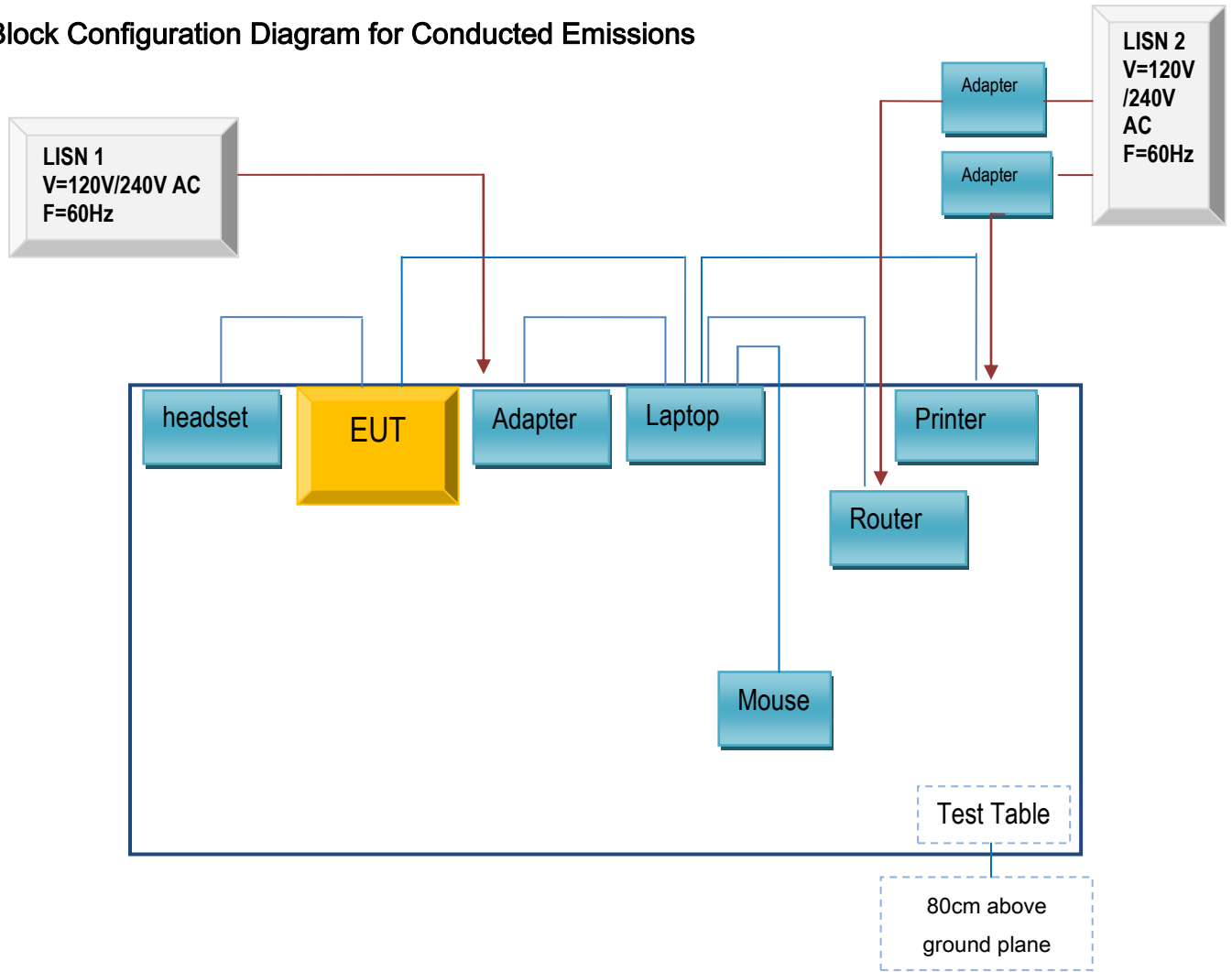


Radiated Emissions Test Setup Above 1GHz

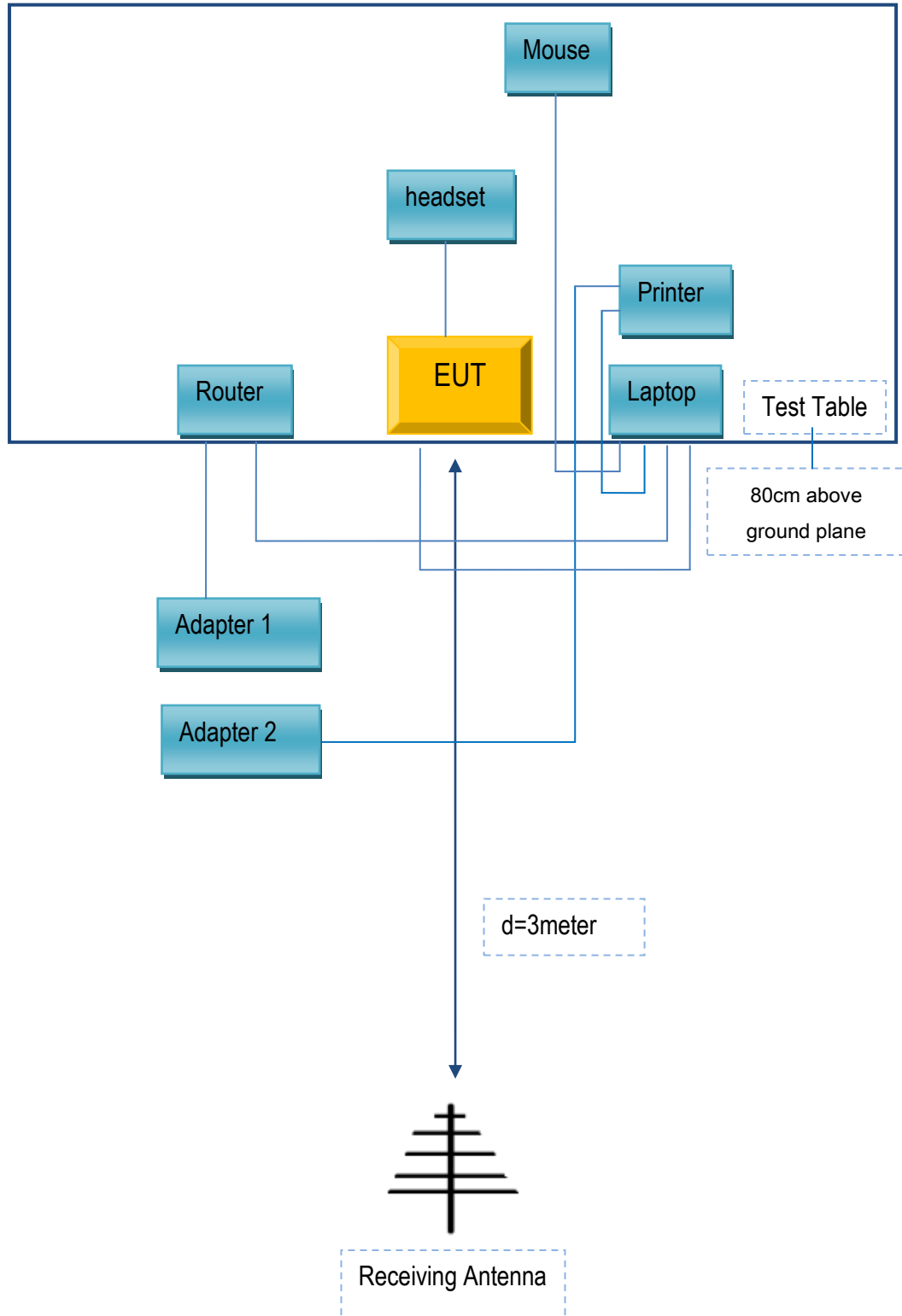
Annex C. TEST SETUP AND SUPPORTING EQUIPMENT

Annex C.ii. TEST SET UP BLOCK

Block Configuration Diagram for Conducted Emissions



Block Configuration Diagram for Radiated Emissions



Annex C. ii. SUPPORTING EQUIPMENT DESCRIPTION

The following is a description of supporting equipment and details of cables used with the EUT.

Supporting Equipment:

Manufacturer	Equipment Description	Model	Serial No
Lenovo	Laptop	E40	LR-1EHRX
GOLDWEB	Router	R102	1202032094
Lenovo	AC Adapter	42T4416	21D9JU
HP	Printer	VCVRA-1003	CN36M19JWX
DELL	Mouse	E100	912NMTUT41481
BULL	Socket	GN-403	GN201203
Telecell Mobile (H.K) Ltd.	headset	ATRIUM II F55L2	N/A

Supporting Cable:

Cable type	Shield Type	Ferrite Core	Length	Serial No
USB Cable	Un-shielding	No	2m	JX120051274
USB Cable	Un-shielding	No	2m	CBA3000AH0C1
RJ45 Cable	Un-shielding	No	2m	KX156327541
Router Power cable	Un-shielding	No	2m	13274630Z
Printer Power cable	Un-shielding	No	2m	127581031
Power Cable	Un-shielding	No	0.8m	GT211032
Earphone Cables	Un-shielding	No	0.5m	N/A

Test Report	17070445-FCC-E
Page	38 of 39

Annex D. User Manual / Block Diagram / Schematics / Partlist

Please see the attachment

Test Report	17070445-FCC-E
Page	39 of 39

Annex E. DECLARATION OF SIMILARITY

N/A