

# EMC TEST REPORT



Report No.: 15071166-FCC-E

Supersede Report No.:N/A

Applicant	Telecell Mobile (H.K) Co. Ltd.	
Product Name	Mobile Phone	
Model No.	F55L	
Serial No.	N/A	
Test Standard	FCC Part 15 Subpart B Class B:2014, ANSI C63.4: 2014	
Test Date	December 01 to December 28, 2015	
Issue Date	January 28, 2016	
Test Result	<input checked="" type="checkbox"/> Pass <input type="checkbox"/> Fail	
Equipment complied with the specification	<input checked="" type="checkbox"/>	
Equipment did not comply with the specification	<input type="checkbox"/>	
<i>Winnie Zhang</i>	<i>David Huang</i>	
Winnie Zhang Test Engineer	David Huang Checked By	
This test report may be reproduced in full only Test result presented in this test report is applicable to the tested sample only		

Issued by:

**SIEMIC (SHENZHEN-CHINA) LABORATORIES**

Zone A, Floor 1, Building 2 Wan Ye Long Technology Park

South Side of Zhoushi Road, Bao' an District, Shenzhen, Guangdong China 518108

Phone: +86 0755 2601 4629801 Email: [China@siemic.com.cn](mailto:China@siemic.com.cn)

## Laboratories Introduction

SIEMIC, headquartered in the heart of Silicon Valley, with superior facilities in US and Asia, is one of the leading independent testing and certification facilities providing customers with one-stop shop services for Compliance Testing and Global Certifications.



In addition to testing and certification, SIEMIC provides initial design reviews and compliance management throughout a project. Our extensive experience with China, Asia Pacific, North America, European, and International compliance requirements, assures the fastest, most cost effective way to attain regulatory compliance for the global markets.

### Accreditations for Conformity Assessment

Country/Region	Scope
USA	EMC, RF/Wireless, SAR, Telecom
Canada	EMC, RF/Wireless, SAR, Telecom
Taiwan	EMC, RF, Telecom, SAR, Safety
Hong Kong	RF/Wireless, SAR, Telecom
Australia	EMC, RF, Telecom, SAR, Safety
Korea	EMI, EMS, RF, SAR, Telecom, Safety
Japan	EMI, RF/Wireless, SAR, Telecom
Singapore	EMC, RF, SAR, Telecom
Europe	EMC, RF, SAR, Telecom, Safety

Test Report	15071166-FCC-E
Page	3 of 31

This page has been left blank intentionally.

# CONTENTS

1. REPORT REVISION HISTORY .....	5
2. CUSTOMER INFORMATION .....	5
3. TEST SITE INFORMATION .....	5
4. EQUIPMENT UNDER TEST (EUT) INFORMATION .....	6
5. TEST SUMMARY .....	9
6. MEASUREMENTS, EXAMINATION AND DERIVED RESULTS .....	10
6.1 AC POWER LINE CONDUCTED EMISSIONS.....	10
6.2 RADIATED EMISSIONS.....	16
ANNEX A. TEST INSTRUMENT.....	21
ANNEX B. EUT AND TEST SETUP PHOTOGRAPHS.....	22
ANNEX C. TEST SETUP AND SUPPORTING EQUIPMENT.....	27
ANNEX D. USER MANUAL / BLOCK DIAGRAM / SCHEMATICS / PARTLIST .....	30
ANNEX E. DECLARATION OF SIMILARITY.....	31

## 1. Report Revision History

Report No.	Report Version	Description	Issue Date
15071166-FCC-E	NONE	Original	December 28, 2015
15071166-FCC-E	V1	Adding cable line information	January 28, 2016

## 2. Customer information

Applicant Name	Telecell Mobile (H.K) Co. Ltd.
Applicant Add	RM 1, 8/F Metro Centre 2, 21 Lam Hing Street. Kln Bay. Hong Kong
Manufacturer	Telecell Mobile (H.K) Co. Ltd.
Manufacturer Add	RM 1, 8/F Metro Centre 2, 21 Lam Hing Street. Kln Bay. Hong Kong

## 3. Test site information

Lab performing tests	SIEMIC (Shenzhen-China) LABORATORIES
Lab Address	Zone A, Floor 1, Building 2 Wan Ye Long Technology Park South Side of Zhoushi Road, Bao' an District, Shenzhen, Guangdong China 518108
FCC Test Site No.	718246
IC Test Site No.	4842E-1
Test Software	Radiated Emission Program-To Shenzhen v2.0

## 4. Equipment under Test (EUT) Information

Description of EUT:	Mobile Phone
Main Model:	F55L
Serial Model:	N/A
Antenna Gain:	<p>GSM850: 1.6 dBi          PCS1900: 3.8 dBi          UMTS-FDD Band V: 1.7 dBi          UMTS-FDD Band IV: 3.7 dBi          UMTS-FDD Band II: 3.8 dBi          Bluetooth/BLE: 3 dBi          WIFI: 2.9 dBi          LTE Band 2: 3.8 dBi          LTE Band 4: 3.95 dBi          LTE Band 5: 1.7 dBi          LTE Band 7: 4.3 dBi          LTE Band 12: 1.45 dBi          LTE Band 17: 1.5 dBi          GPS:1.6 dBi</p>
Input Power:	<p>Adapter:          Model: SC/8WA050150US          Input: AC 100-240V; 50/60Hz;0.3A          Output: DC 5.0V,1.5A          Battery:          Model: C975339250P          Spec:3.8V,2500mAh,9.5Wh</p>
Equipment Category :	JBP

Type of Modulation:

GSM / GPRS: GMSK  
EGPRS: GMSK  
UMTS-FDD: QPSK, 16QAM  
802.11b/g/n: DSSS, OFDM  
Bluetooth: GFSK, π /4DQPSK, 8DPSK  
BLE: GFSK  
LTE Band: QPSK, 16QAM  
GPS: BPSK

RF Operating Frequency (ies):

GSM850 TX: 824.2 ~ 848.8 MHz; RX: 869.2 ~ 893.8 MHz  
PCS1900 TX: 1850.2 ~ 1909.8 MHz; RX: 1930.2 ~ 1989.8 MHz  
UMTS-FDD Band V TX: 826.4 ~ 846.6 MHz; RX: 871.4 ~ 891.6 MHz  
UMTS-FDD Band IV TX: 1712.4 ~ 1752.6 MHz;  
RX : 2112.4 ~ 2152.6 MHz  
UMTS-FDD Band II TX: 1852.4 ~ 1907.6 MHz;  
RX: 1932.4 ~ 1987.6 MHz  
WIFI: 802.11b/g/n(20M): 2412-2462 MHz  
WIFI: 802.11n(40M): 2422-2452 MHz  
Bluetooth & BLE: 2402-2480 MHz  
LTE Band 2 TX: 1852.5 ~ 1907.5 MHz; RX : 1932.5 ~ 1987.5 MHz  
LTE Band 4 TX: 1712.5 ~ 1752.5 MHz; RX : 2112.5 ~ 2152.5 MHz  
LTE Band 5 TX: 826.5 ~ 846.5 MHz; RX : 871.5 ~ 891.5 MHz  
LTE Band 7 TX: 2502.5 ~ 2567.5 MHz; RX : 2622.5 ~ 2687.5 MHz  
LTE Band 12 TX: 699.7 ~ 715.3 MHz; RX : 729.7 ~ 745.3 MHz  
LTE Band 17 TX: 706.5 ~ 713.5 MHz; RX : 736.5 ~ 743.5 MHz  
GPS RX: 1575.42 MHz

Number of Channels:

GSM 850: 124CH  
PCS1900: 299CH  
UMTS-FDD Band V : 102CH  
UMTS-FDD Band IV: 202CH  
UMTS-FDD Band II : 277CH  
WIFI : 802.11b/g/n(20M): 11CH  
WIFI : 802.11n(40M): 7CH  
Bluetooth: 79CH  
BLE: 40CH  
GPS: 1CH

Port:

Power Port, Earphone Port, USB Port

Test Report	15071166-FCC-E
Page	8 of 31

Trade Name : FIGO

FCC ID: 2ADX3F55L

Date EUT received: December 01, 2015

Test Date(s): December 01 to December 28, 2015



## 5. Test Summary

The product was tested in accordance with the following specifications.

All testing has been performed according to below product classification:

FCC Rules	Description of Test	Result
§15.107; ANSI C63.4: 2014	AC Power Line Conducted Emissions	Compliance
§15.109; ANSI C63.4: 2014	Radiated Emissions	Compliance

### Measurement Uncertainty

Emissions		
Test Item	Description	Uncertainty
Band Edge and Radiated Spurious Emissions	Confidence level of approximately 95% (in the case where distributions are normal), with a coverage factor of 2 (for EUTs < 0.5m X 0.5m X 0.5m)	+5.6dB/-4.5dB
-	-	-

## 6. Measurements, Examination And Derived Results

### 6.1 AC Power Line Conducted Emissions

Temperature	24°C
Relative Humidity	53%
Atmospheric Pressure	1011mbar
Test date :	December 11, 2015
Tested By :	Winnie Zhang

#### Requirement(s):

Spec	Item	Requirement	Applicable														
47CFR§15.107	a)	<p>For Low-power radio-frequency devices that is designed to be connected to the public utility (AC) power line, the radio frequency voltage that is conducted back onto the AC power line on any frequency or frequencies, within the band 150 kHz to 30 MHz, shall not exceed the limits in the following table, as measured using a 50 [μ] H/50 ohms line impedance stabilization network (LISN). The lower limit applies at the boundary between the frequencies ranges.</p> <table border="1"> <thead> <tr> <th rowspan="2">Frequency ranges (MHz)</th> <th colspan="2">Limit (dBμV)</th> </tr> <tr> <th>QP</th> <th>Average</th> </tr> </thead> <tbody> <tr> <td>0.15 ~ 0.5</td> <td>66 – 56</td> <td>56 – 46</td> </tr> <tr> <td>0.5 ~ 5</td> <td>56</td> <td>46</td> </tr> <tr> <td>5 ~ 30</td> <td>60</td> <td>50</td> </tr> </tbody> </table>	Frequency ranges (MHz)	Limit (dBμV)		QP	Average	0.15 ~ 0.5	66 – 56	56 – 46	0.5 ~ 5	56	46	5 ~ 30	60	50	<input checked="" type="checkbox"/>
Frequency ranges (MHz)	Limit (dBμV)																
	QP	Average															
0.15 ~ 0.5	66 – 56	56 – 46															
0.5 ~ 5	56	46															
5 ~ 30	60	50															

Test Setup	<p style="text-align: center;"> <b>Note: 1.Support units were connected to second LISN .</b>  <b>2.Both of LISNs (AMN) are 80cm from EUT and at least 80cm from other units and other metal planes support units.</b> </p>
------------	--

Procedure	<ol style="list-style-type: none"> <li>The EUT and supporting equipment were set up in accordance with the requirements of the standard on top of a 1.5m x 1m x 0.8m high, non-metallic table.</li> <li>The power supply for the EUT was fed through a 50Ω /50mH EUT LISN, connected to filtered mains.</li> </ol>
-----------	--

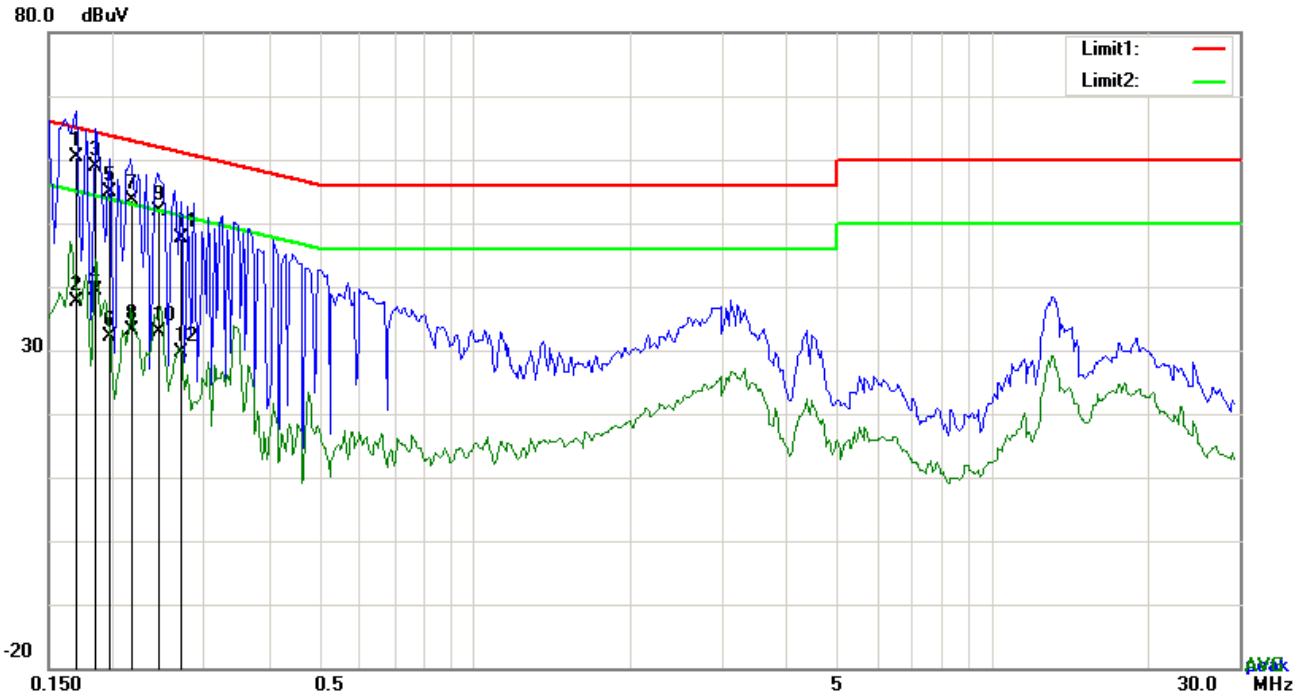
Test Report	15071166-FCC-E
Page	11 of 31

	<ol style="list-style-type: none"> <li>3. The RF OUT of the EUT LISN was connected to the EMI test receiver via a low-loss coaxial cable.</li> <li>4. All other supporting equipment were powered separately from another main supply.</li> <li>5. The EUT was switched on and allowed to warm up to its normal operating condition.</li> <li>6. A scan was made on the NEUTRAL line (for AC mains) or Earth line (for DC power) over the required frequency range using an EMI test receiver.</li> <li>7. High peaks, relative to the limit line, The EMI test receiver was then tuned to the selected frequencies and the necessary measurements made with a receiver bandwidth setting of 10 kHz.</li> <li>8. Step 7 was then repeated for the LIVE line (for AC mains) or DC line (for DC power).</li> </ol>
Remark	
Result	<input checked="" type="checkbox"/> Pass <input type="checkbox"/> Fail

Test Data     Yes                       N/A

Test Plot     Yes (See below)             N/A

**Test Mode : USB Mode**

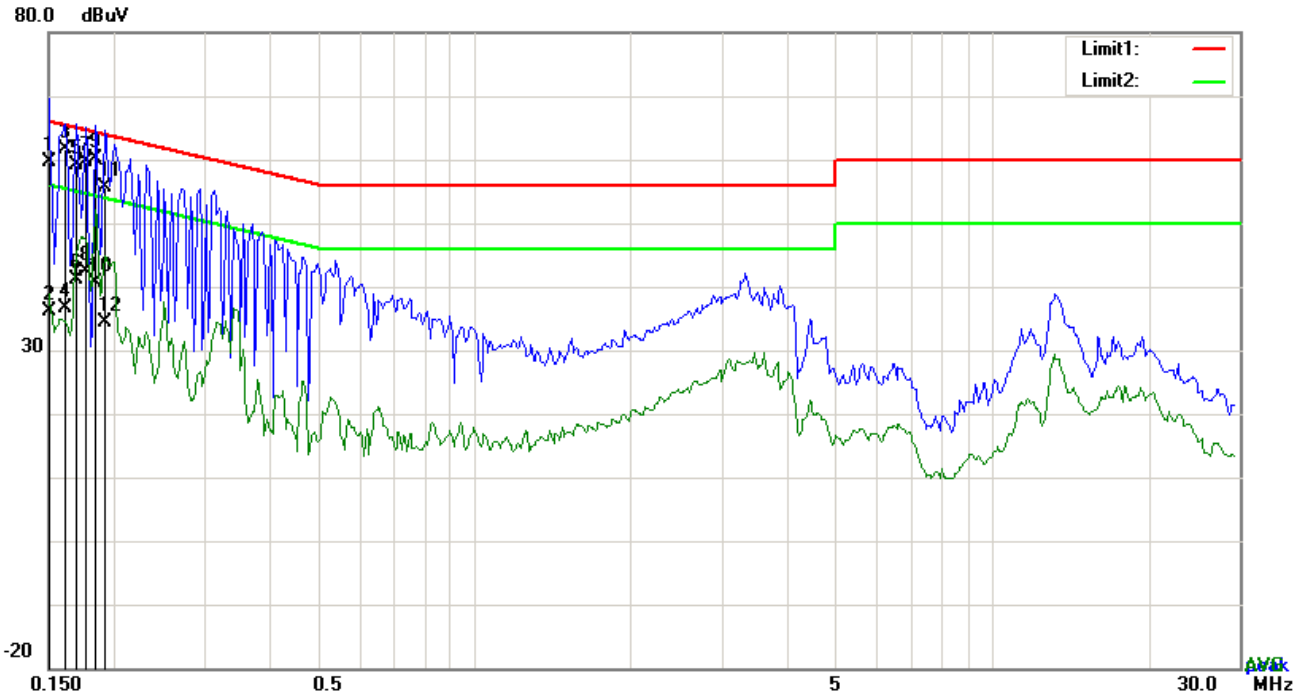


**Test Data**

**Phase Line Plot at 120Vac, 60Hz**

No.	P/L	Frequency	Reading	Detector	Corrected	Result	Limit	Margin
		(MHz)	(dBuV)		(dB)	(dBuV)	(dBuV)	(dB)
1	L1	0.1695	50.39	QP	10.03	60.42	64.98	-4.56
2	L1	0.1695	27.62	AVG	10.03	37.65	54.98	-17.33
3	L1	0.1851	48.82	QP	10.03	58.85	64.25	-5.40
4	L1	0.1851	29.29	AVG	10.03	39.32	54.25	-14.93
5	L1	0.1968	44.82	QP	10.03	54.85	63.74	-8.89
6	L1	0.1968	22.21	AVG	10.03	32.24	53.74	-21.50
7	L1	0.2174	43.51	QP	10.03	53.54	62.92	-9.38
8	L1	0.2174	23.00	AVG	10.03	33.03	52.92	-19.89
9	L1	0.2455	41.93	QP	10.03	51.96	61.91	-9.95
10	L1	0.2455	22.86	AVG	10.03	32.89	51.91	-19.02
11	L1	0.2709	37.58	QP	10.03	47.61	61.09	-13.48
12	L1	0.2709	19.69	AVG	10.03	29.72	51.09	-21.37

**Test Mode : USB Mode**

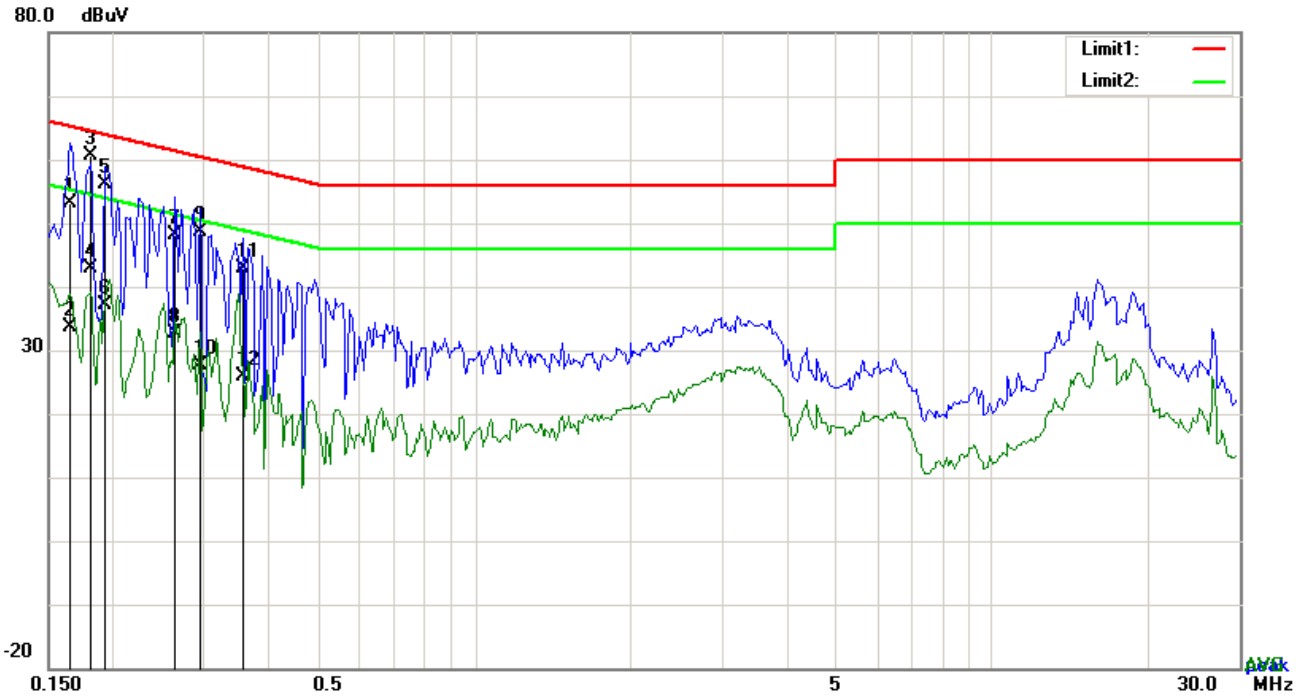


**Test Data**

**Phase Neutral Plot at 120Vac, 60Hz**

No.	P/L	Frequency	Reading	Detector	Corrected	Result	Limit	Margin
		(MHz)	(dBuV)		(dB)	(dBuV)	(dBuV)	(dB)
1	N	0.1500	49.54	QP	10.02	59.56	66.00	-6.44
2	N	0.1500	26.10	AVG	10.02	36.12	56.00	-19.88
3	N	0.1617	51.61	QP	10.02	61.63	65.38	-3.75
4	N	0.1617	26.60	AVG	10.02	36.62	55.38	-18.76
5	N	0.1695	49.17	QP	10.02	59.19	64.98	-5.79
6	N	0.1695	31.13	AVG	10.02	41.15	54.98	-13.83
7	N	0.1773	49.68	QP	10.02	59.70	64.61	-4.91
8	N	0.1773	32.34	AVG	10.02	42.36	54.61	-12.25
9	N	0.1851	50.19	QP	10.02	60.21	64.25	-4.04
10	N	0.1851	30.70	AVG	10.02	40.72	54.25	-13.53
11	N	0.1929	45.52	QP	10.02	55.54	63.91	-8.37
12	N	0.1929	24.37	AVG	10.02	34.39	53.91	-19.52

**Test Mode : USB Mode**

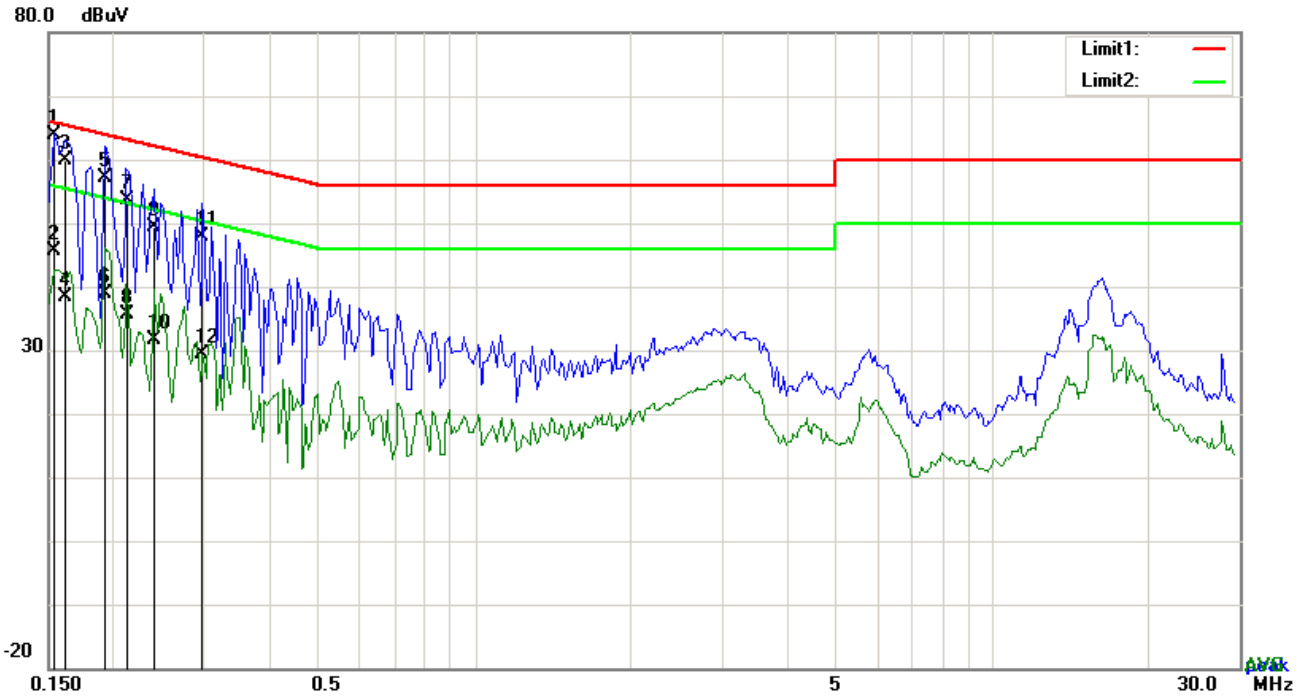


**Test Data**

**Phase Line Plot at 240Vac, 60Hz**

No.	P/L	Frequency (MHz)	Reading (dBuV)	Detector	Corrected (dB}	Result (dBuV)	Limit (dBuV)	Margin (dB)
1	L1	0.1656	43.01	QP	10.03	53.04	65.18	-12.14
2	L1	0.1656	23.48	AVG	10.03	33.51	55.18	-21.67
3	L1	0.1812	50.66	QP	10.03	60.69	64.43	-3.74
4	L1	0.1812	32.75	AVG	10.03	42.78	54.43	-11.65
5	L1	0.1929	46.12	QP	10.03	56.15	63.91	-7.76
6	L1	0.1929	27.11	AVG	10.03	37.14	53.91	-16.77
7	L1	0.2631	38.20	QP	10.03	48.23	61.33	-13.10
8	L1	0.2631	22.60	AVG	10.03	32.63	51.33	-18.70
9	L1	0.2943	38.55	QP	10.03	48.58	60.40	-11.82
10	L1	0.2943	17.61	AVG	10.03	27.64	50.40	-22.76
11	L1	0.3567	32.77	QP	10.03	42.80	58.80	-16.00
12	L1	0.3567	15.92	AVG	10.03	25.95	48.80	-22.85

**Test Mode : USB Mode**



**Test Data**

**Phase Neutral Plot at 240Vac, 60Hz**

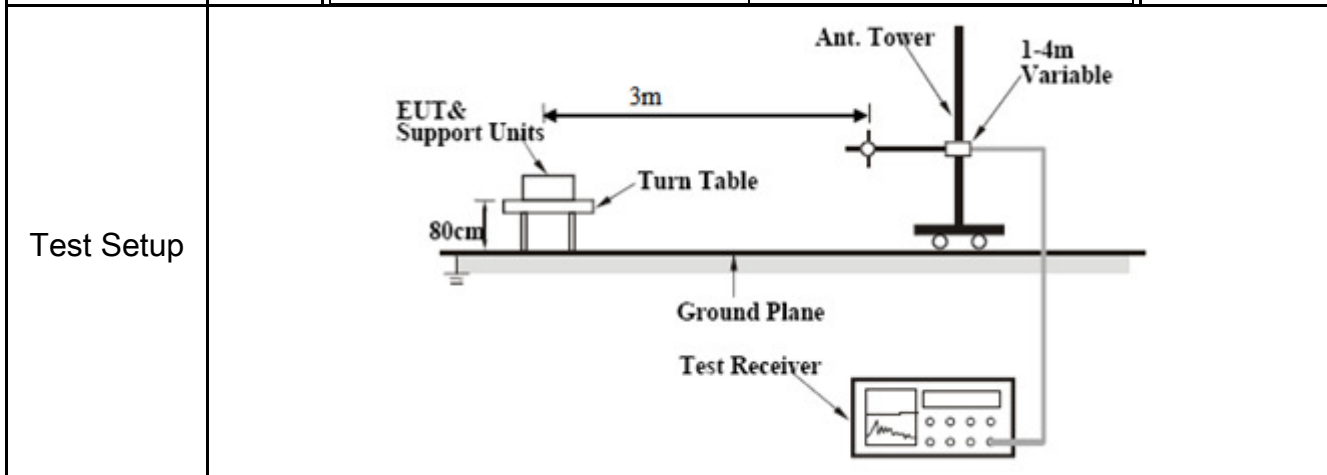
No.	P/L	Frequency	Reading	Detector	Corrected	Result	Limit	Margin
		(MHz)	(dBuV)		(dB)	(dBuV)	(dBuV)	(dB)
1	N	0.1539	53.91	QP	10.02	63.93	65.79	-1.86
2	N	0.1539	35.55	AVG	10.02	45.57	55.79	-10.22
3	N	0.1617	49.82	QP	10.02	59.84	65.38	-5.54
4	N	0.1617	28.30	AVG	10.02	38.32	55.38	-17.06
5	N	0.1929	47.05	QP	10.02	57.07	63.91	-6.84
6	N	0.1929	28.81	AVG	10.02	38.83	53.91	-15.08
7	N	0.2128	43.66	QP	10.02	53.68	63.10	-9.42
8	N	0.2128	25.56	AVG	10.02	35.58	53.10	-17.52
9	N	0.2397	39.40	QP	10.02	49.42	62.11	-12.69
10	N	0.2397	21.67	AVG	10.02	31.69	52.11	-20.42
11	N	0.2982	37.82	QP	10.02	47.84	60.29	-12.45
12	N	0.2982	19.38	AVG	10.02	29.40	50.29	-20.89

## 6.2 Radiated Emissions

Temperature	24°C
Relative Humidity	53%
Atmospheric Pressure	1011mbar
Test date :	December 11, 2015
Tested By :	Winnie Zhang

### Requirement(s):

Spec	Item	Requirement	Applicable										
47CFR§15.109(d)	a)	Except higher limit as specified elsewhere in other section, the emissions from the low-power radio-frequency devices shall not exceed the field strength levels specified in the following table and the level of any unwanted emissions shall not exceed the level of the fundamental emission. The tighter limit applies at the band edges	<input checked="" type="checkbox"/>										
		<table border="1"> <thead> <tr> <th>Frequency range (MHz)</th> <th>Field Strength (<math>\mu\text{V}/\text{m}</math>)</th> </tr> </thead> <tbody> <tr> <td style="text-align: center;">30 – 88</td> <td style="text-align: center;">100</td> </tr> <tr> <td style="text-align: center;">88 – 216</td> <td style="text-align: center;">150</td> </tr> <tr> <td style="text-align: center;">216 960</td> <td style="text-align: center;">200</td> </tr> <tr> <td style="text-align: center;">Above 960</td> <td style="text-align: center;">500</td> </tr> </tbody> </table>		Frequency range (MHz)	Field Strength ( $\mu\text{V}/\text{m}$ )	30 – 88	100	88 – 216	150	216 960	200	Above 960	500
		Frequency range (MHz)		Field Strength ( $\mu\text{V}/\text{m}$ )									
		30 – 88		100									
		88 – 216		150									
216 960	200												
Above 960	500												



Procedure	<ol style="list-style-type: none"> <li>1. The EUT was switched on and allowed to warm up to its normal operating condition.</li> <li>2. The test was carried out at the selected frequency points obtained from the EUT characterization. Maximization of the emissions, was carried out by rotating the EUT, changing the antenna polarization, and adjusting the antenna height in the following manner:             <ol style="list-style-type: none"> <li>a. Vertical or horizontal polarization (whichever gave the higher emission level</li> </ol> </li> </ol>
-----------	---



Test Report	15071166-FCC-E
Page	17 of 31

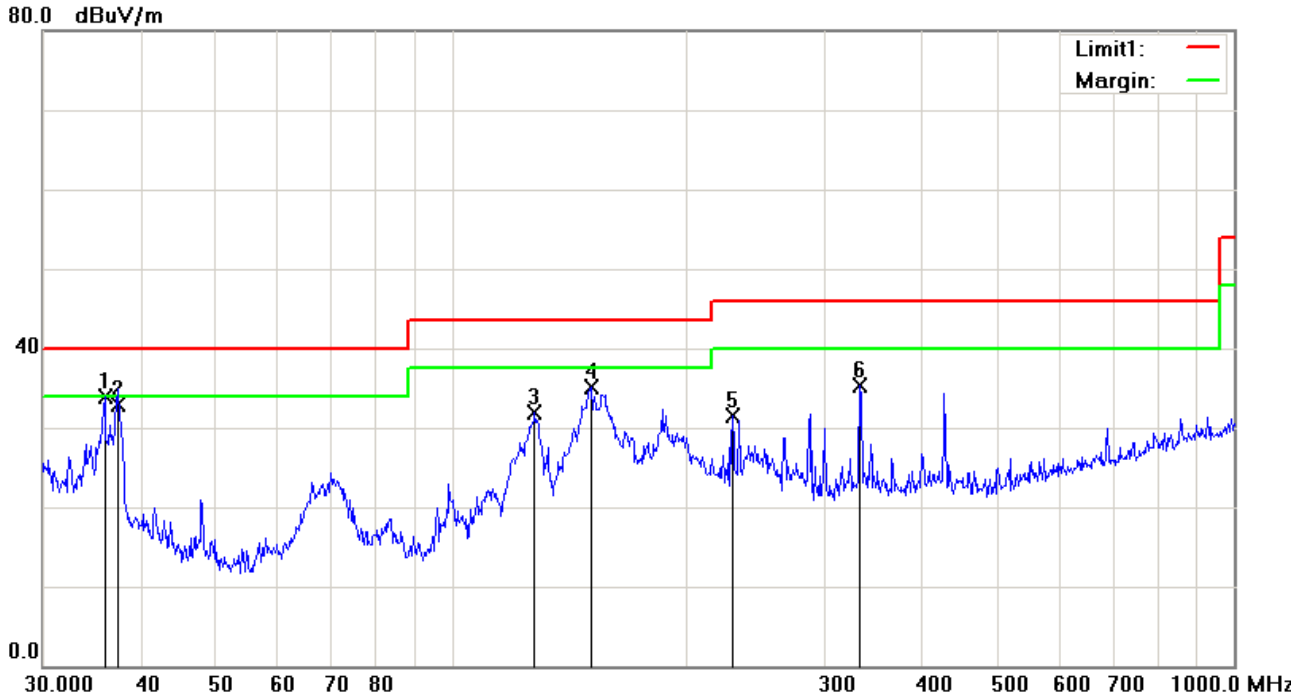
	<p>over a full rotation of the EUT) was chosen.</p> <p>b. The EUT was then rotated to the direction that gave the maximum emission.</p> <p>c. Finally, the antenna height was adjusted to the height that gave the maximum emission.</p> <p>3. The resolution bandwidth and video bandwidth of test receiver/spectrum analyzer is 120 kHz for Quasiy Peak detection at frequency below 1GHz.</p> <p>4. The resolution bandwidth of test receiver/spectrum analyzer is 1MHz and video bandwidth is 3MHz with Peak detection for Peak measurement at frequency above 1GHz.      The resolution bandwidth of test receiver/spectrum analyzer is 1MHz and the video bandwidth with Peak detection for Average Measurement as below at frequency above 1GHz.      ■ 1 kHz (Duty cycle &lt; 98%) □ 10 Hz (Duty cycle &gt; 98%)</p> <p>5. Steps 2 and 3 were repeated for the next frequency point, until all selected frequency points were measured.</p>
Remark	
Result	<input checked="" type="checkbox"/> Pass <input type="checkbox"/> Fail

Test Data     Yes                       N/A

Test Plot     Yes (See below)             N/A

**Test Mode : USB Mode**

**Below 1GHz**

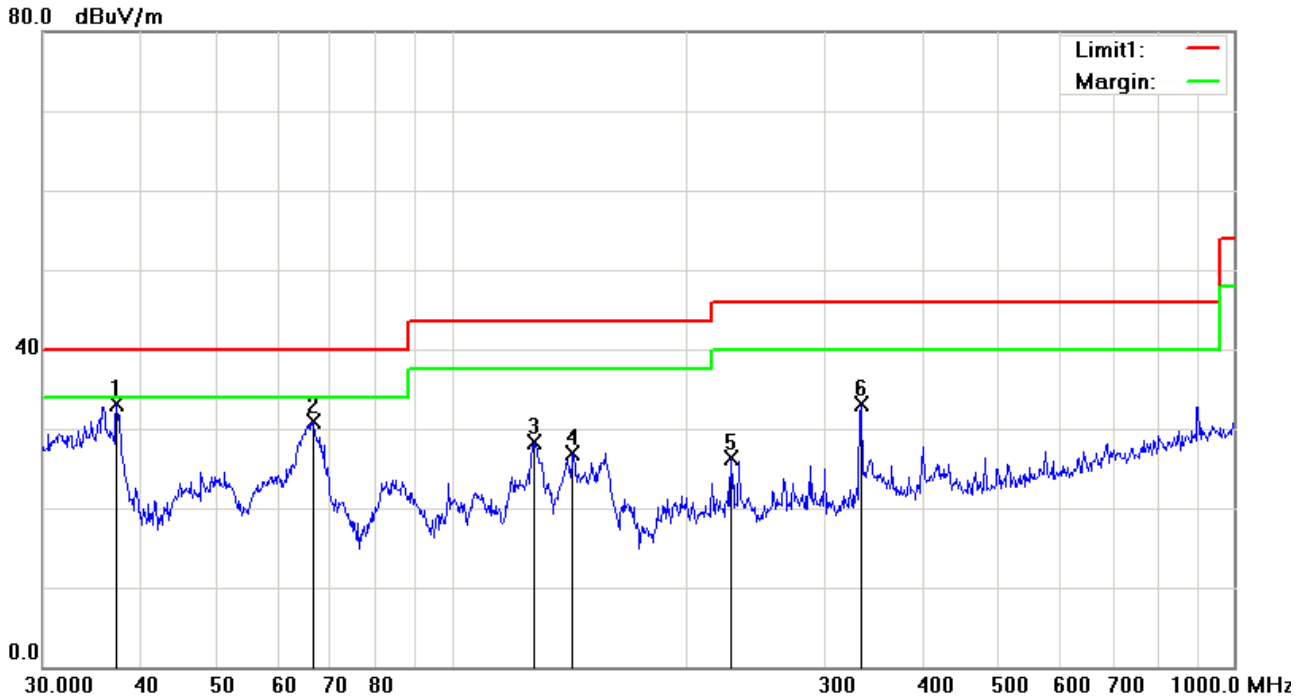


**Test Data**

**Horizontal Polarity Plot @3m**

No.	P/L	Frequency	Reading	Detector	Corrected	Result	Limit	Margin	Height	Degree
		(MHz)	(dBuV/m)		(dB/m)	(dBuV/m)	(dBuV/m)	(dB)	(cm)	( ° )
1	H	36.0007	38.58	peak	-4.67	33.91	40.00	-6.09	100	355
2	H	37.4165	38.62	QP	-5.70	32.92	40.00	-7.08	100	33
3	H	127.6645	39.65	peak	-7.79	31.86	43.50	-11.64	100	104
4	H	150.5378	43.53	peak	-8.40	35.13	43.50	-8.37	100	239
5	H	228.4904	40.53	peak	-9.00	31.53	46.00	-14.47	100	303
6	H	332.5187	41.27	peak	-5.97	35.30	46.00	-10.70	100	119

**Below 1GHz**



**Test Data**

**Vertical Polarity Plot @3m**

No.	P/L	Frequency	Reading	Detector	Corrected	Result	Limit	Margin	Height	Degree
		(MHz)	(dBuV/m)		(dB/m)	(dBuV/m)	(dBuV/m)	(dB)	(cm)	(°)
1	V	37.2855	38.70	peak	-5.61	33.09	40.00	-6.91	100	1
2	V	66.4989	44.71	peak	-13.86	30.85	40.00	-9.15	100	353
3	V	127.2176	36.01	peak	-7.76	28.25	43.50	-15.25	100	293
4	V	142.8244	35.41	peak	-8.50	26.91	43.50	-16.59	100	237
5	V	227.6906	35.24	peak	-8.99	26.25	46.00	-19.75	100	199
6	V	333.6867	38.99	peak	-5.93	33.06	46.00	-12.94	100	293

### *Above 1GHz*

Frequency (MHz)	Amplitude (dB $\mu$ V/m)	Azimuth	Height (cm)	Polarity (H/V)	Factors (dB)	Limit (dB $\mu$ V/m)	Margin (dB)	Detector (PK/AV)
1586.12	49.82	50	170	V	-22.10	74	-24.18	PK
2125.03	50.32	150	150	V	-21.42	74	-23.68	PK
1677.43	48.13	70	180	V	-22.23	74	-25.87	PK
2300.23	50.08	45	210	H	-21.34	74	-23.92	PK
2733.45	49.75	100	168	H	-22.47	74	-24.25	PK
1897.66	49.92	63	152	H	-23.88	74	-24.08	PK

*Note1: The highest frequency of the EUT is 2480 MHz, so the testing has been conformed to  $5 \times 2480 \text{MHz} = 12,400 \text{MHz}$ .*

*Note2: The frequency that above 3GHz is mainly from the environment noise.*

*Note3: The AV measurement performed, more than 20dB below limit so AV test data was not presented.*

## Annex A. TEST INSTRUMENT

Instrument	Model	Serial #	Cal Date	Cal Due	In use
<b>AC Line Conducted Emissions</b>					
EMI test receiver	ESCS30	8471241027	09/17/2015	09/16/2016	<input checked="" type="checkbox"/>
Line Impedance Stabilization Network	LI-125A	191106	09/25/2015	09/24/2016	<input checked="" type="checkbox"/>
Line Impedance Stabilization Network	LI-125A	191107	09/25/2015	09/24/2016	<input checked="" type="checkbox"/>
LISN	ISN T800	34373	09/25/2015	09/24/2016	<input checked="" type="checkbox"/>
Transient Limiter	LIT-153	531118	09/01/2015	08/31/2016	<input checked="" type="checkbox"/>
<b>Radiated Emissions</b>					
EMI test receiver	ESL6	100262	09/17/2015	09/16/2016	<input checked="" type="checkbox"/>
OPT 010 AMPLIFIER (0.1-1300MHz)	8447E	2727A02430	09/01/2015	08/31/2016	<input checked="" type="checkbox"/>
Microwave Preamplifier (1 ~ 26.5GHz)	8449B	3008A02402	03/25/2015	03/24/2016	<input checked="" type="checkbox"/>
Bilog Antenna (30MHz~6GHz)	JB6	A110712	09/21/2015	09/20/2016	<input checked="" type="checkbox"/>
Double Ridge Horn Antenna	AH-118	71259	09/24/2015	09/23/2016	<input checked="" type="checkbox"/>

## Annex B. EUT And Test Setup Photographs

### Annex B.i. Photograph: EUT External Photo

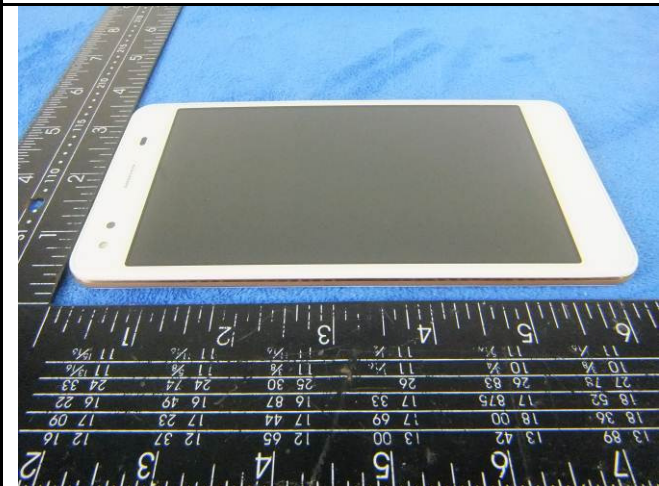




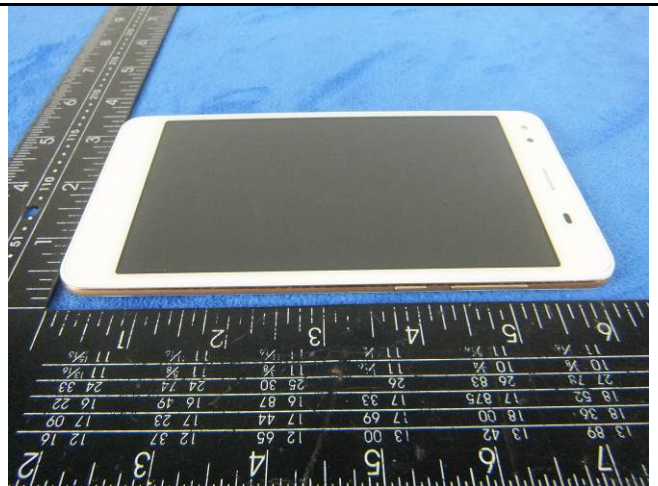
EUT - Top View



EUT - Bottom View



EUT - Left View



EUT - Right View

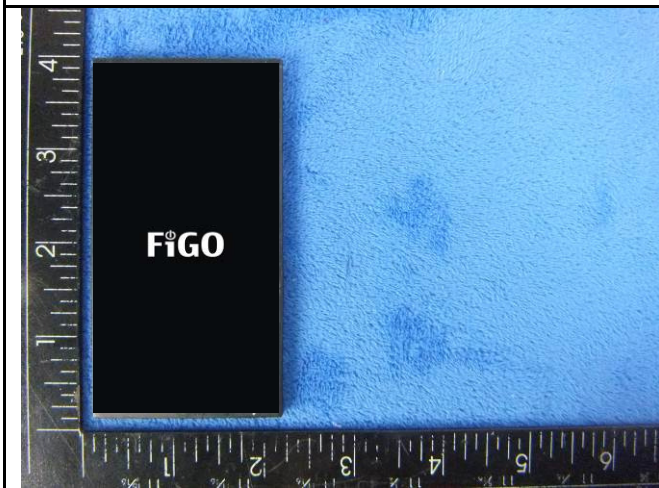
**Annex B.ii. Photograph: EUT Internal Photo**



Cover Off - Top View 1



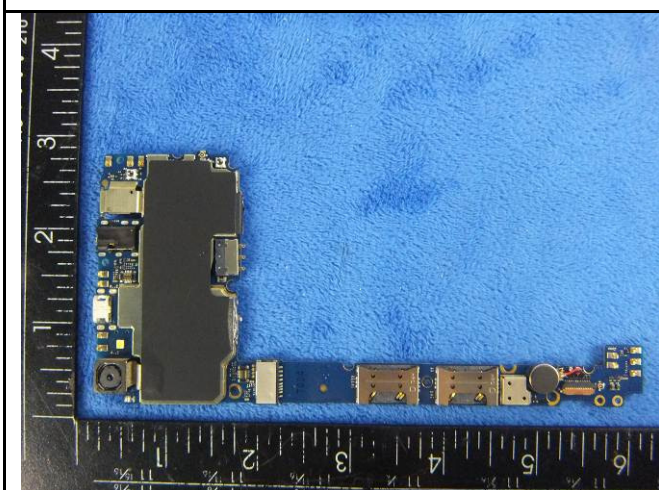
Cover Off - Top View 2



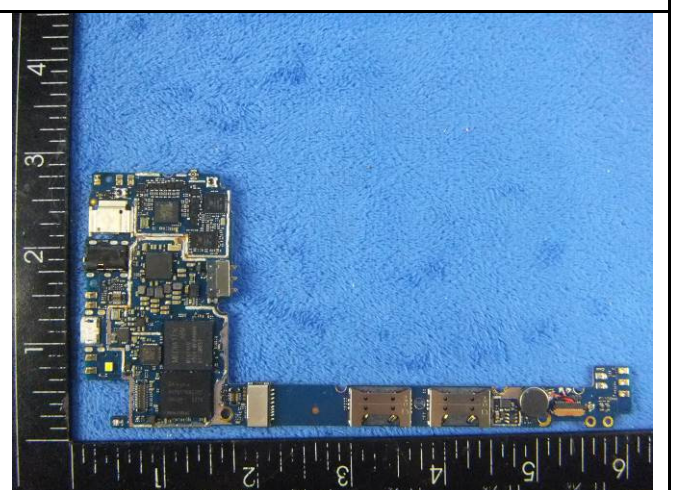
Battery - Front View



Battery - Rear View

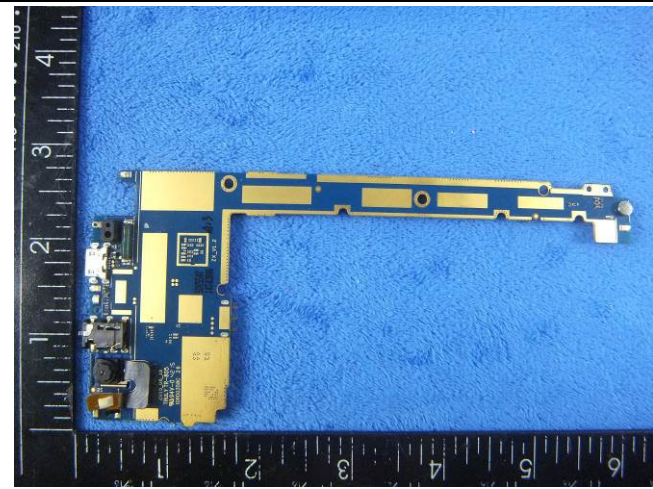


Mainboard with Shielding - Front View



Mainboard without Shielding - Front View





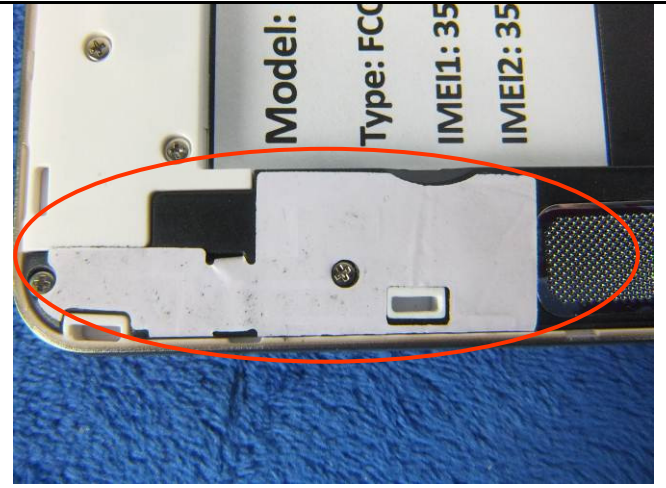
Mainboard – Rear View



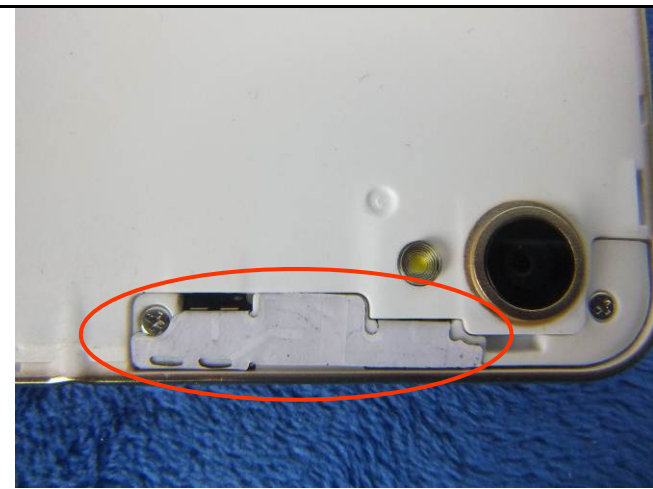
LCD – Front View



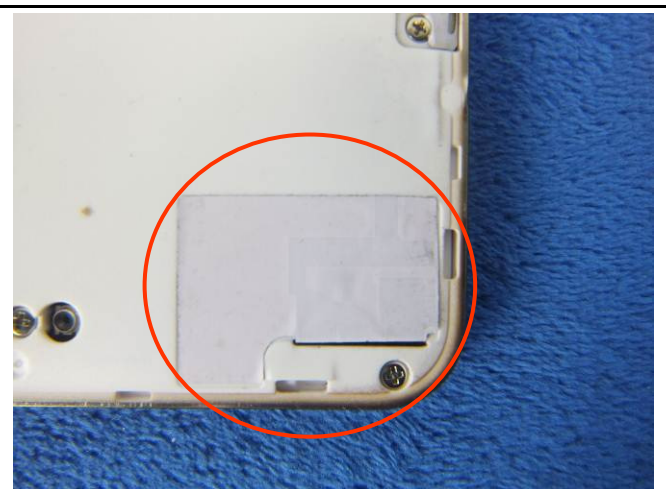
LCD – Rear View



GSM/PCS/UMTS-FDD/LTE Antenna View



WIFI/BT/BLE - Antenna View



GPS - Antenna View

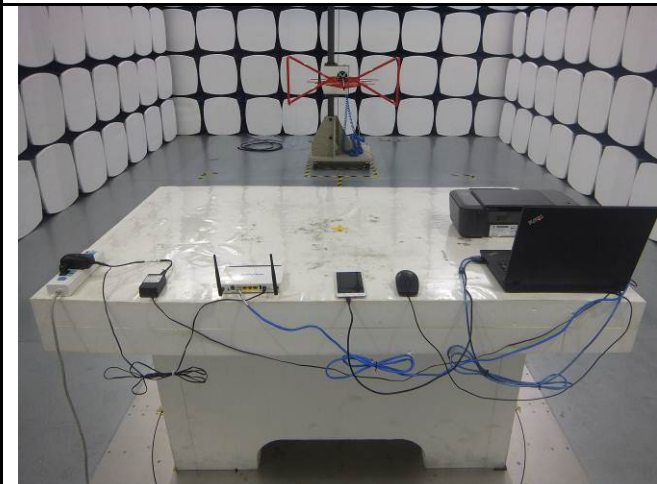
**Annex B.iii. Photograph: Test Setup Photo**



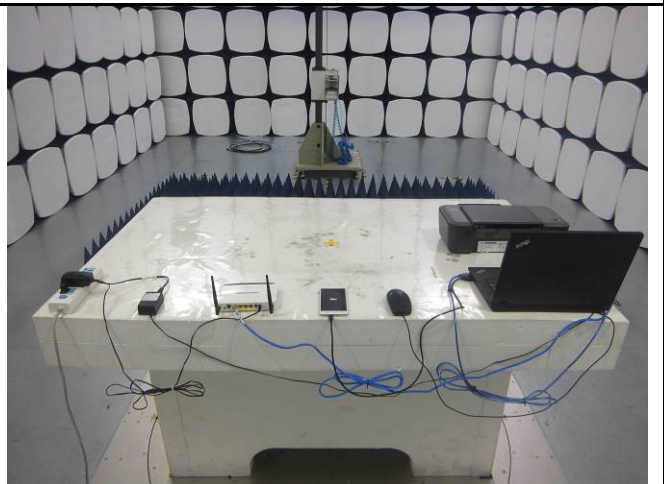
Conducted Emissions Test Setup – Front View



Conducted Emissions Test Setup – Side View



Radiated Emissions Test Setup Below 1GHz

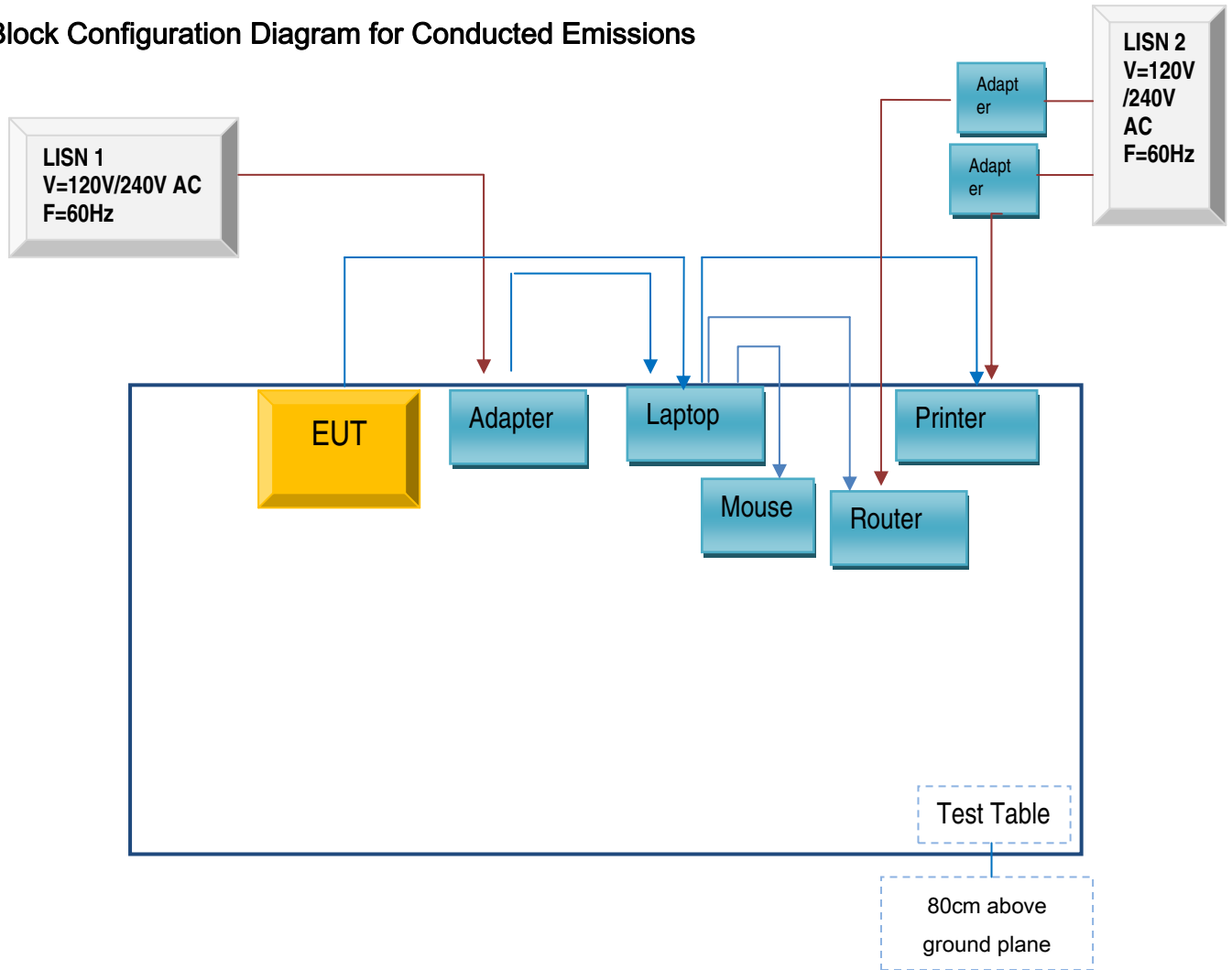


Radiated Emissions Test Setup Above 1GHz

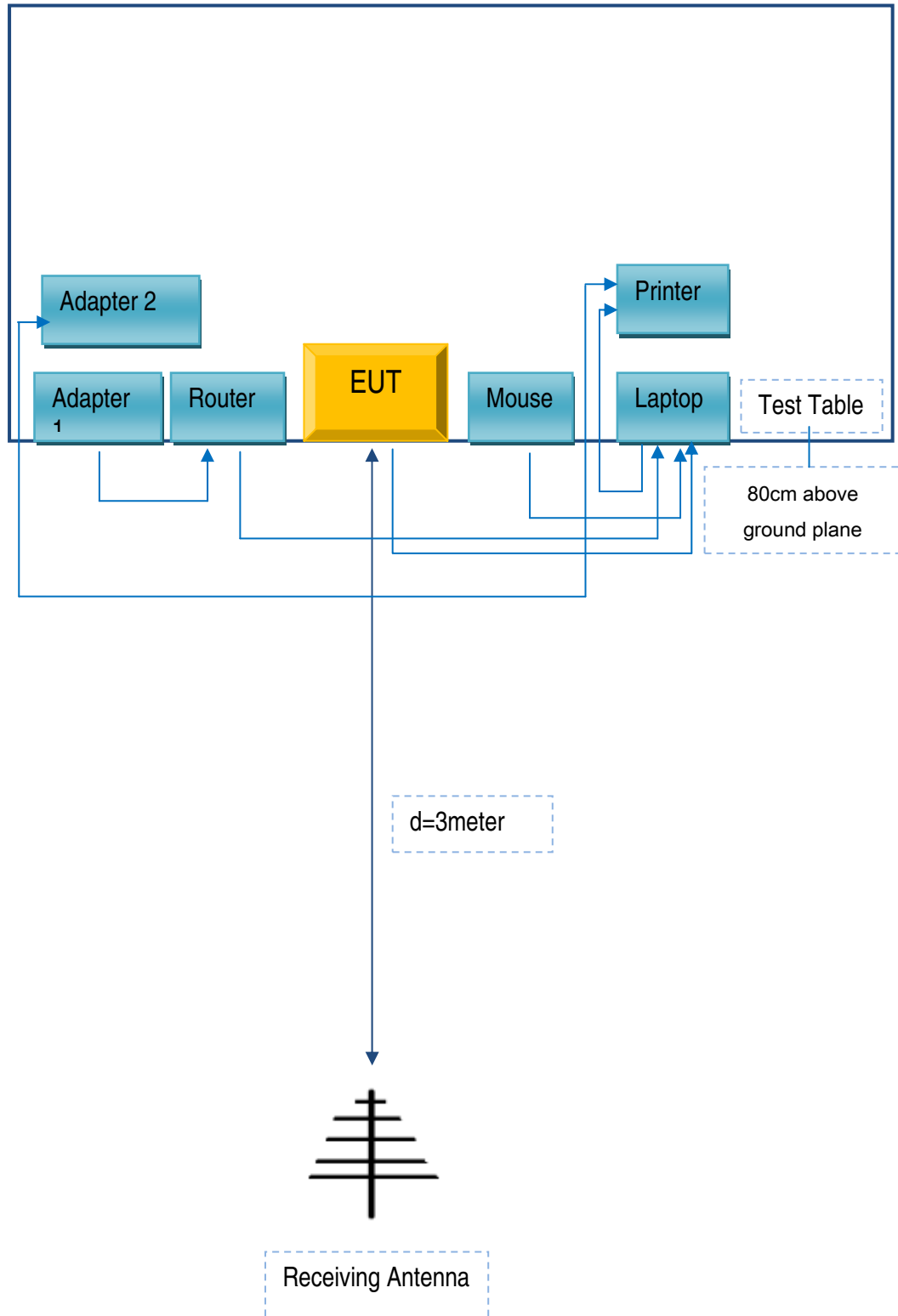
## Annex C. TEST SETUP AND SUPPORTING EQUIPMENT

### Annex C.ii. TEST SET UP BLOCK

Block Configuration Diagram for Conducted Emissions



### Block Configuration Diagram for Radiated Emissions



## Annex C. ii. SUPPORTING EQUIPMENT DESCRIPTION

The following is a description of supporting equipment and details of cables used with the EUT.

### Supporting Equipment:

Manufacturer	Equipment Description	Model	Serial No
Lenovo	Laptop	E40	LR-1EHRX
GOLDWEB	Router	R102	1202032094
HP	Printer	VCVRA-1003	CN36M19JWX
DELL	Mouse	E100	912NMTUT41481

### Supporting Cable:

Cable type	Shield Type	Ferrite Core	Length	Serial No
USB Cable	Un-shielding	No	2m	JX120051274
USB Cable	Un-shielding	No	2m	JX110725002
RJ45 Cable	Un-shielding	No	2m	KX156327541
Router Power cable	Un-shielding	No	2m	13274630Z
Printer Power cable	Un-shielding	No	2m	127581031

Test Report	15071166-FCC-E
Page	30 of 31

**Annex D. User Manual / Block Diagram / Schematics / Partlist**

Please see Attachment

Test Report	15071166-FCC-E
Page	31 of 31

## Annex E. DECLARATION OF SIMILARITY

N/A