

## Appendix B. Test Setup Photographs

### Conducted Emissions Test Configuration:

Front View



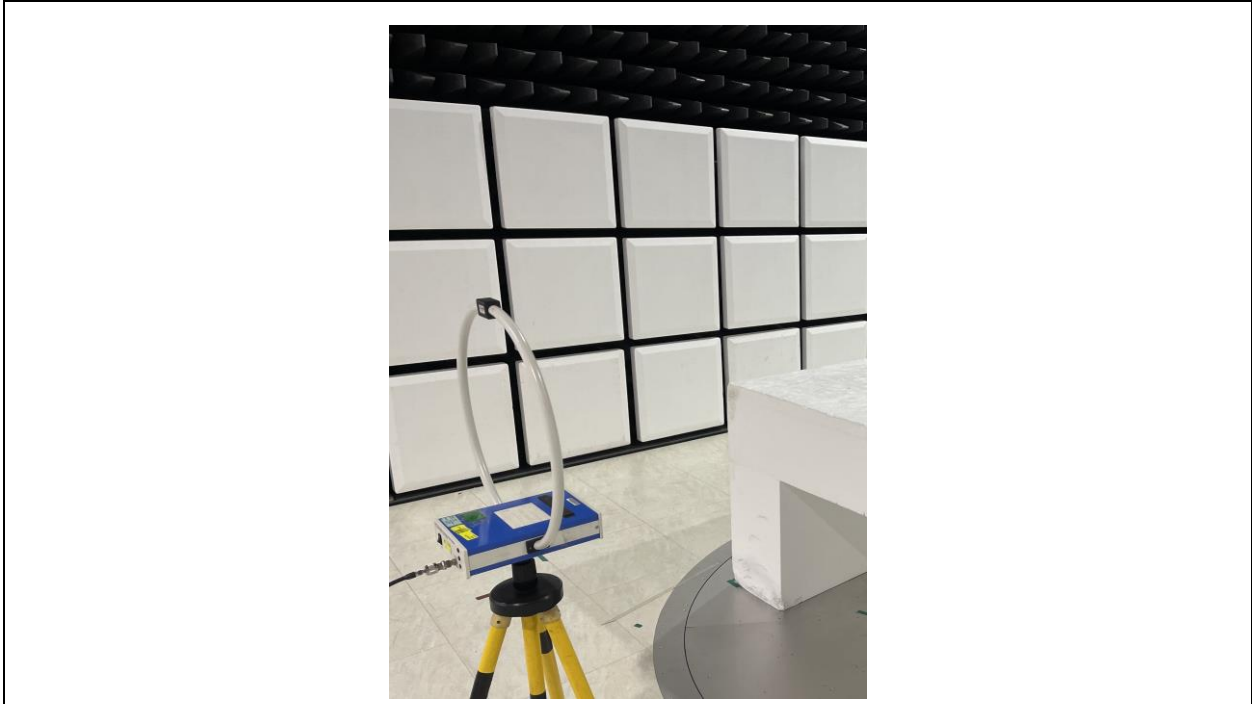
Rear View



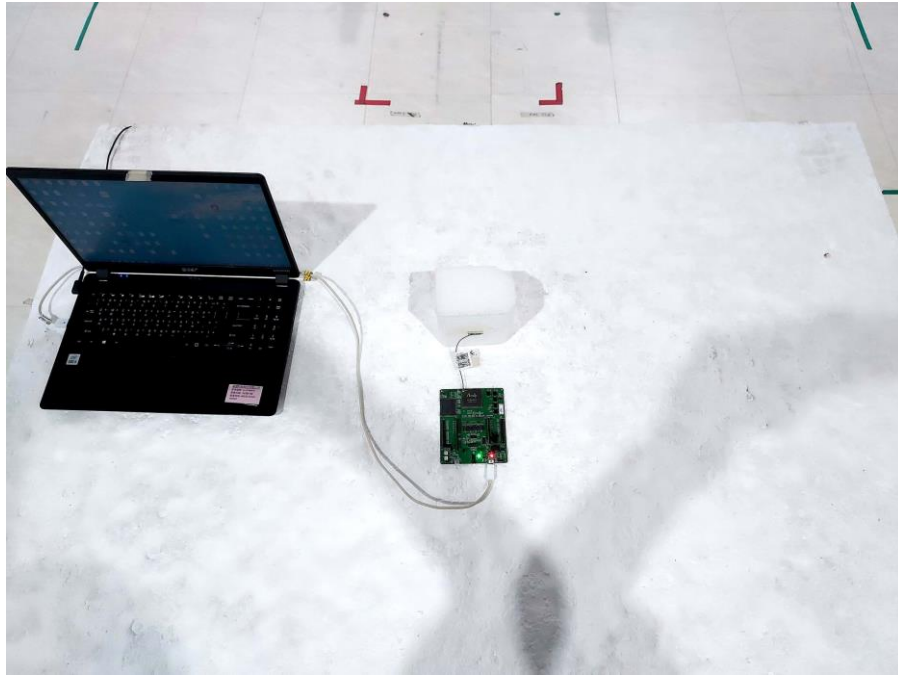
**Radiated Emissions Test Configuration:**

PCB Dipole Antenna

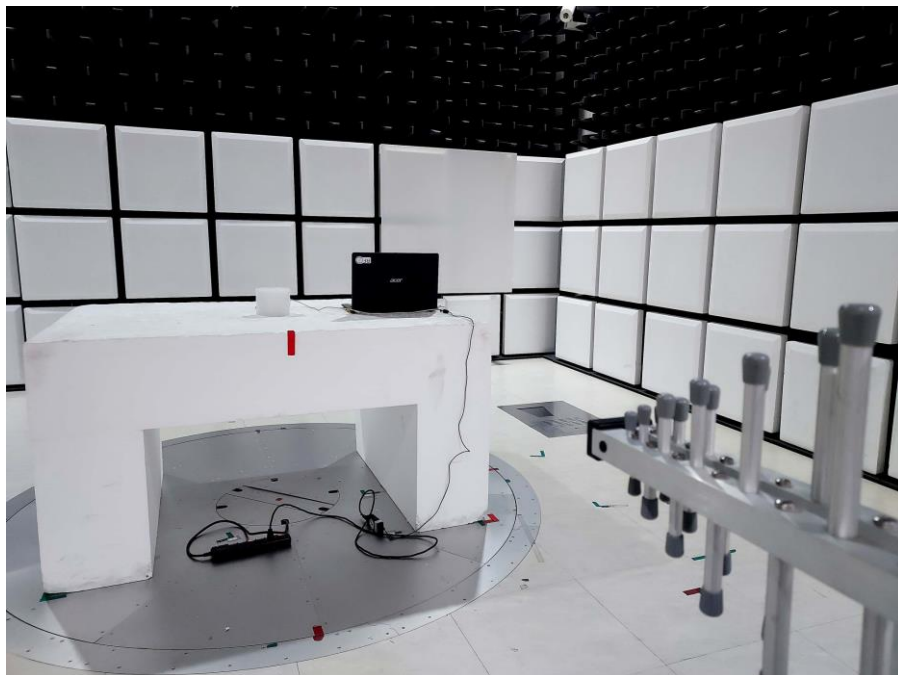
9 kHz ~ 30 MHz



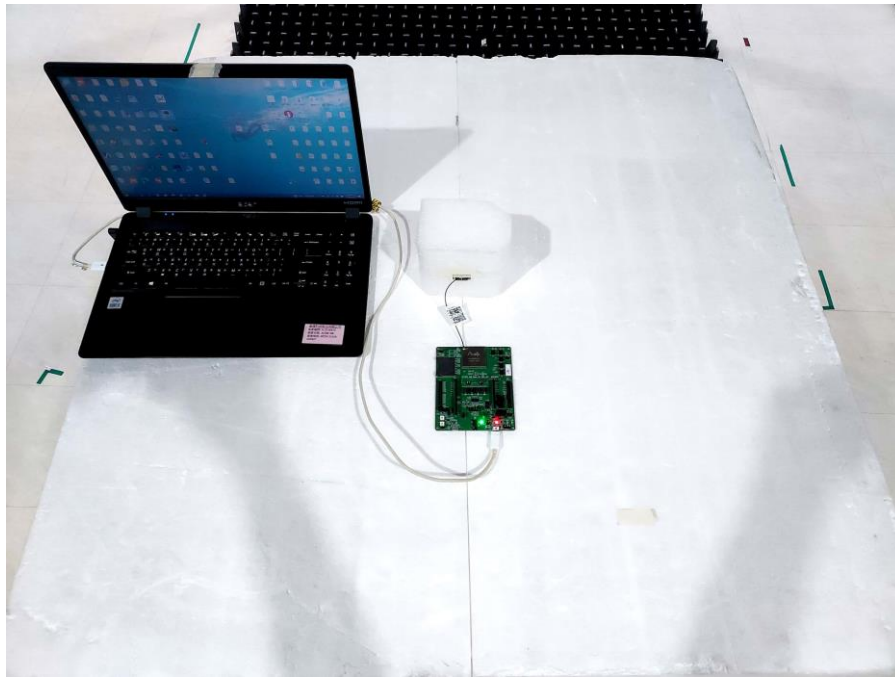
**Below 1 GHz \_ Front View**



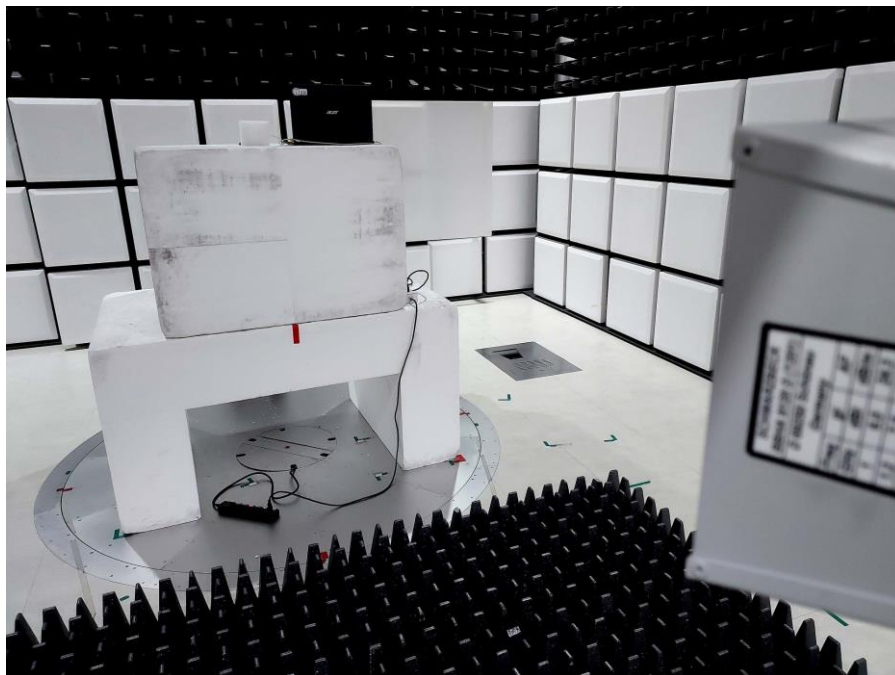
**Below 1 GHz \_ Rear View**



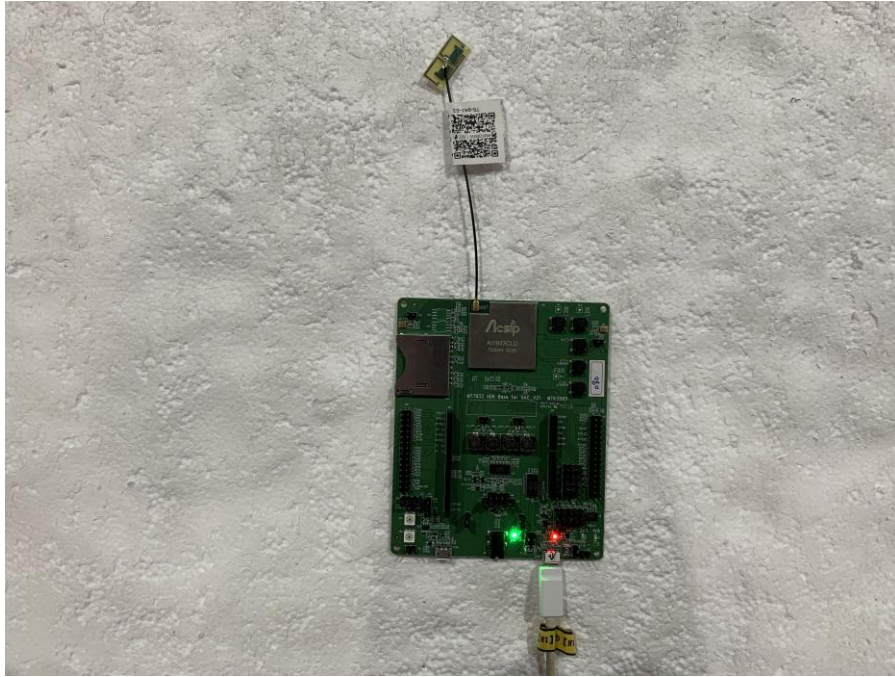
Above 1 GHz \_ Front View



Above 1 GHz \_ Rear View



Close View



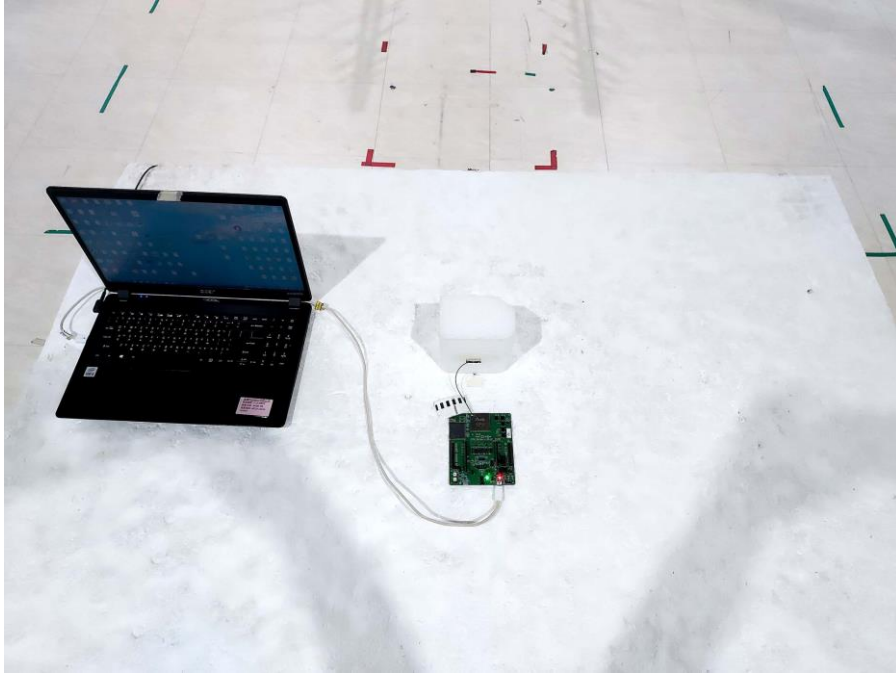
FPC Dipole Antenna

9 kHz ~ 30 MHz





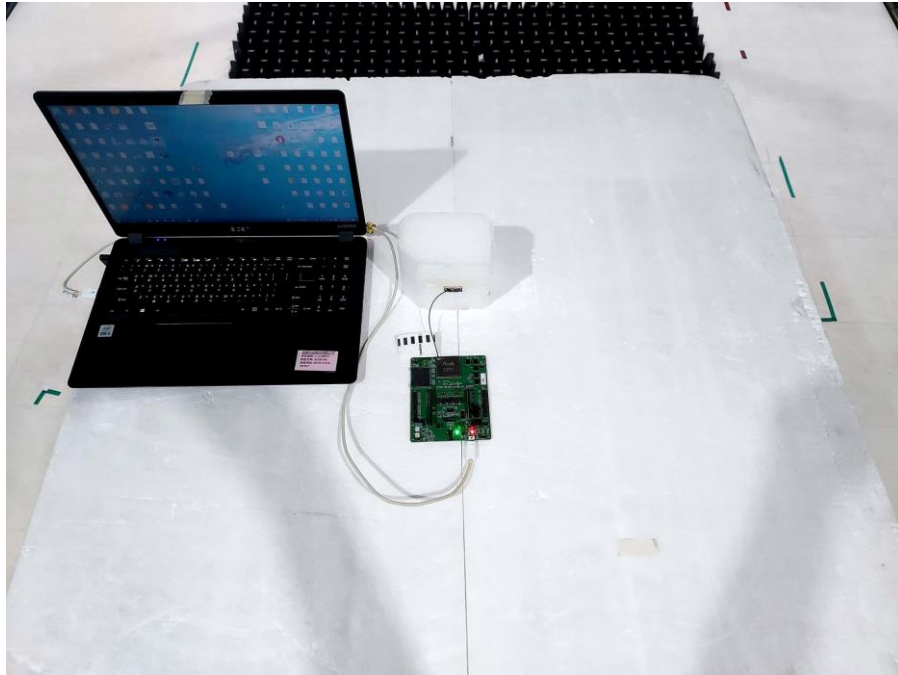
**Below 1 GHz \_ Front View**



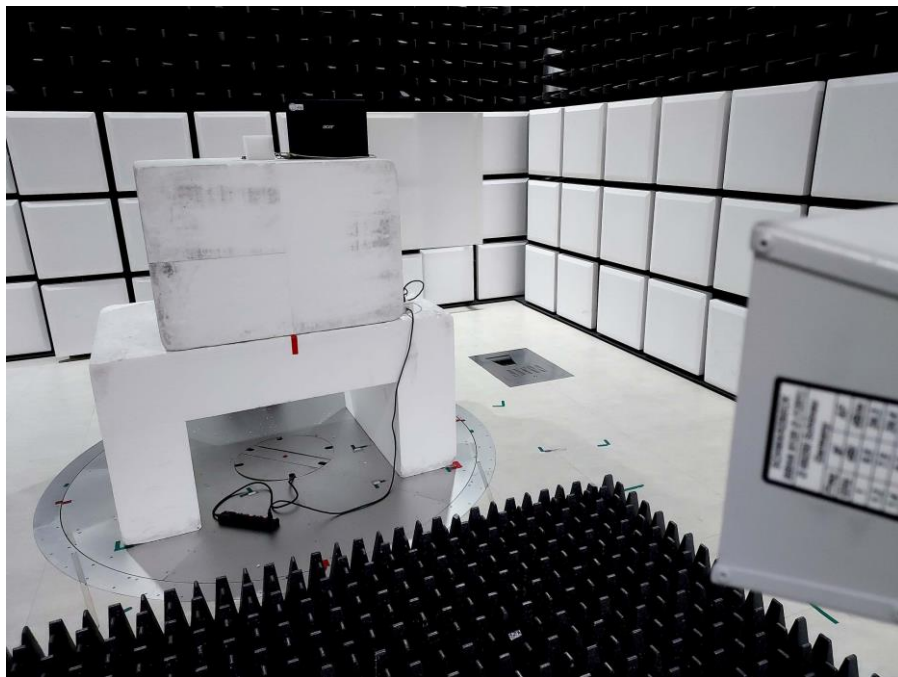
**Below 1 GHz \_ Rear View**



Above 1 GHz \_ Front View



Above 1 GHz \_ Rear View





**Close View**

