

A2000'S[®] **Audio**

PROFESSIONAL DUAL-CHANNEL UHF WIRELESS MICROPHONE SYSTEM

AWM6036U

OWNER'S MANUAL



Thank you for purchasing the **Audio2000'S[®]** professional dual-channel UHF wireless microphone system! For the best results and the utmost satisfaction from your new unit, please read this manual thoroughly, and retain it for future reference. For more information, please visit our website (www.audio2000s.com).

FCC Warning

This device complies with Part 15 of the FCC Rules. Operation is subject to the following two conditions:

(1) This device may not cause harmful interference, and (2) this device must accept any interference received, including interference that may cause undesired operation.

NOTE 1: This equipment has been tested and found to comply with the limits for a Class B digital device, pursuant to part 15 of the FCC Rules. These limits are designed to provide reasonable protection against harmful interference in a residential installation. This equipment generates uses and can radiate radio frequency energy and, if not installed and used in accordance with the instructions, may cause harmful interference to radio communications. However, there is no guarantee that interference will not occur in a particular installation. If this equipment does cause harmful interference to radio or television reception, which can be determined by turning the equipment off and on, the user is encouraged to try to correct the interference by one or more of the following measures:

- Reorient or relocate the receiving antenna.
- Increase the separation between the equipment and receiver.
- Connect the equipment into an outlet on a circuit different from that to which the receiver is connected.
- Consult the dealer or an experienced radio/TV technician for help.

NOTE 2: Any changes or modifications to this unit not expressly approved by the party responsible for compliance could void the user's authority to operate the equipment.

CONTENTS

Warning.....	1
Precautions.....	1
Package Contents.....	2
Quick Setup.....	2
Features.....	4
System Configurations.....	4
System Functions.....	4
Operations.....	6
Specifications.....	6
Troubleshooting.....	7
Service Information.....	8

WARNING

To prevent fire or shock hazard, do not expose the unit to rain or moisture.

Dangerously high voltages are present inside the unit. Do not open the cabinet. Refer servicing to qualified personnel only.

PRECAUTIONS

On Safety

* Operate only on designated AC power supply (120V AC in North America).

* Should any liquid or solid object fall into the cabinet, unplug the unit and have it checked by qualified personnel before operating it any further.

* Unplug the unit from the wall outlet or set the Master switch to OFF if it is not to be used for several days.

* To disconnect the cord, pull it out by the plug, Never pull the cord itself.

On Installation

* Allow adequate air circulation to prevent internal heat build-up, Do not place the unit on surfaces (rugs, blankets, etc,) or near materials (curtains, draperies) that may block the ventilation holes.

* Do not install the unit in a location near heat sources such as radiators or air ducts, or in a place subject to direct sunlight, excessive dust, mechanical vibration or shock.

On Repackaging

Do not throw away the carton and packing materials. They make an ideal container in which to transport the unit. When shipping the unit to another location, repack it as it was originally packed at the factory.

PACKAGE CONTENTS

<u>Items</u>	<u>Quantities</u>
AWR6036U Receiver	1
Wireless Transmitters	2
Two Handhelds	
or	
Two Body Packs	
or	
One Handheld + One Body Pack	
AC/DC Adaptor	1
Antennas	2
¼" to ¼" Cable	1
AA Batteries	4
Owner's Manual	1

QUICK SETUP

A. Remove packing material

B. Install the AWR6036U receiver

1. Place the AWR6036U receiver at a location at least 3.5 feet (1 meter) away from the ground and all the walls. Also, keep the AWR6036U receiver away from any electro-magnetic noise sources as far as possible.
2. Plug the supplied AC/DC adaptor 12VDC output connector to the AWR6036U receiver's DC input, and then plug the AC input of the adaptor to a 120V AC outlet (North America).
3. Extend both the antennas to a vertical position. Make sure that any of the antennas is not enclosed in a large metal body.
4. Connect the outputs of the AWR6036U receiver to microphone inputs of a mixer or a sound system. In order to do so, (1) you could use the supplied microphone cable (a cable with ¼" connectors on both ends) to connect from the unbalanced output (an ¼" jack) to an ¼" microphone input on a mixer or a sound system; or (2) you could get two balanced microphone cables (cables with a male XLR connector at one end and a female XLR connector on the other end; not included in the package) to connect from both the balanced outputs (male XLR jacks) to two balanced microphone inputs (female XLR jacks) on a mixer or a sound system.

Note: Both the ¼" output and the XLR balanced outputs on the rear panel of the AWR6036U receiver are to be connected to microphone inputs only.

5. Turn both audio level adjustment knobs all the way to the minimal audio position. Turn on the AWR6036U receiver. After the power of the AWR6036U receiver is turned on, the power LED indicator will be turned on, (**Note:** The audio level adjustment knobs will be adjusted to its optimal position after the transmitters are turned on as discussed in the following section.)

C. Set up the transmitters

(a) Set up the handheld transmitter

1. Open the battery cover of the handheld transmitter by rotating the cover counterclockwise.
2. Carefully slide the battery cover out.
3. Place two 1.5V AA batteries into the battery housing with the battery polarity orientations as indicated.
4. Slide the battery cover back onto the handheld microphone body. Once the battery cover has been moved all the way back, rotate the battery cover clockwise to secure the battery cover to the handheld microphone body.
5. Turn on the power of the handheld transmitter.

(b) Set up the body-pack transmitter

1. Open the battery cover of the body-pack transmitter by pushing battery cover in the direction away from the belt clip.
2. Place two 1.5V AA batteries into the battery housing with the battery polarity orientations as indicated.
3. Slide the cover in the direction toward the belt clip to close the battery cover. Plug the supplied headset or lavalier microphone into the microphone input on the body pack transmitter.
4. Turn on the power of the body-pack transmitter.

D. Setting up the AWR6036U system

1. The RF signal indicators on the AWR6036U receiver will be turned on after the power of the transmitters is turned on.
2. Adjust the volume control knobs on the AWR6036U to the 12-o'clock position and adjust the mixer or the sound system, which is connected to the AWR6036U microphone output, to have an optimal sound level. The AWR6036U is now ready.
3. If more than one AWR6036U systems are to be used at the same time and the same location, the frequencies of the AWR6036U systems other than the first one need to be different from one another to avoid frequency interference.

AWR6036U SYSTEM

FEATURES

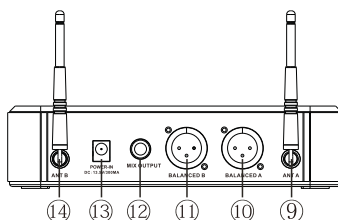
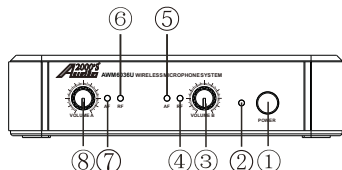
1. UHF Band Frequencies
2. Including Two Wireless Transmitters (Comprising Combinations of Handheld Microphones, Lavalier Microphones, and/or Headset Microphones)
3. Two Independent Balanced XLR outputs and One Mixed Unbalanced 1/4" Output
4. Two Independent Volume Control Knobs (One for Each Channel)
5. Two AF LED Indicators and Two RF LED Indicators
6. Rugged Mini Receiver Chassis
7. Operating Range up to 100ft
8. 13V - 15V DC Power Supply

SYSTEM CONFIGURATIONS

- AWM6036U - Comprising an AWR6036U receiver and two AWX6035 wireless handheld microphones
- AWM6036UL - Comprising an AWR6036U receiver and one AWX6035 wireless handheld microphone, one AWM6036T wireless transmitter and one lavalier microphone
- AWM6036UM - Comprising an AWR6036U receiver and two AWX6035T wireless transmitters and two lavalier microphones
- AWM6036UH – Comprising an AWR6036U receiver, two AWX6035T wireless transmitters, and two headset microphones
- AWM6036UX – Comprising an AWR6036U receiver, one AWX6035 wireless handheld microphone, one AWX6035T wireless transmitter, and one headset microphone

SYSTEM FUNCTIONS

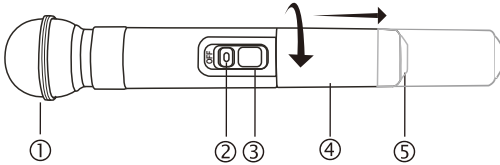
AWR6036U RECEIVER



- | |
|--|
| <p>1. POWER ON/OFF BUTTON --- This button is to be used as a power On/Off switch. When the AWR6036U receiver power is off, press this button to turn on the power. When the power is on, press this button to turn off the power.</p> |
| <p>2. POWER LED INDICATOR --- This power LED indicator is used to indicate that the AWR6036U power is on.</p> |
| <p>3. CHANNEL-B AUDIO LEVEL ADJUSTMENT KNOB --- This knob is used to raise or lower the channel-B microphone-output audio level.</p> |
| <p>4. CHANNEL-B RADIO FREQUENCY (RF) SIGNAL INDICATOR --- This channel-B RF signal indicator is used to indicate that the radio signal is being received from the wireless transmitter corresponding to channel B.</p> |
| <p>5. CHANNEL-B AUDIO FREQUENCY (AF) SIGNAL LEVEL INDICATOR --- This channel-B AF signal indicator is used to indicate the level of the audio input signal that is being received from the wireless transmitter corresponding to channel B.</p> |
| <p>6. CHANNEL-A RADIO FREQUENCY (RF) SIGNAL INDICATOR --- This channel-A RF signal indicator is used to indicate that the radio signal is being received from the wireless transmitter corresponding to channel A.</p> |
| <p>7. CHANNEL-A AUDIO FREQUENCY (AF) SIGNAL LEVEL INDICATOR --- This channel-A AF signal indicator is used to indicate the level of the audio input signal that is being received from the</p> |

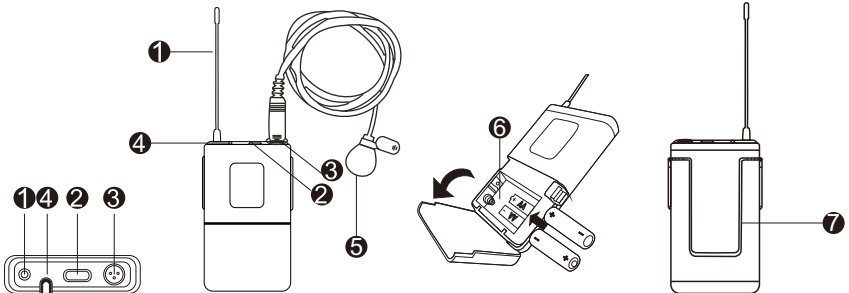
wireless transmitter corresponding to channel A.
8. CHANNEL-A AUDIO LEVEL ADJUSTMENT KNOB --- This knob is used to raise or lower the channel-A microphone-output audio level.
9. CHANNEL-A ANTENNA --- This is the antenna for channel A.
10. CHANNEL-A BALANCED MICROPHONE OUTPUT (XLRM Jack) --- This is the XLR balanced microphone output for channel A.
11. CHANNEL-B BALANCED MICROPHONE OUTPUT (XLRM Jack) --- This is the XLR balanced microphone output for channel B.
12. UNBALANCED MICROPHONE OUTPUT (1/4" Jack) --- This is a mixed unbalanced microphone output from both Channel A and Channel B (a mixed output).
13. 13.5VDC/300mA POWER INPUT JACK (Tip Positive)
14. CHANNEL-B ANTENNA --- This is the antenna for channel B.

AWX6035 HANDHELD WIRELESS MICROPHONE



1. WIRELESS HANDHELD MICROPHONE WINDSCREEN --- This is to protect the cartridge and help reducing the breath sounds and wind noise.
2. LOW BATTERY-POWER INDICATOR --- This LED is to indicate that the power level of the AA batteries in the battery housing is low and need to be replaced. When the AA batteries are still fresh, this LED light will only flash once when the Power On/Off switch is turned from the Off position to the Mute position or directly to the On position.
3. THREE-POSITION POWER ON/OFF & MUTE SWITCH --- This switch is to be used as a power On/Off switch and as a mute switch. When the microphone power is off, push this switch in the direction toward the microphone windscreen one step to the Mute position. When the switch is at the Mute position, the RF signal is sent to the AWR6036U receiver and the RF LED indicator on the receiver will be turned on while the AF LED indicator stays off and the audio signal is not sent to the receiver (the receiver is muted). Push the On/Off switch in the direction toward the microphone windscreen one more step and the microphone will be turned on.
4. MICROPHONE BATTERY COMPARTMENT
5. MICROPHONE BATTERY COVER --- Open the battery cover of the microphone by rotating the cover counterclockwise. To put the battery cover back to the microphone, slide the battery cover back onto the microphone body and rotate the battery cover clockwise to secure the battery cover to the microphone body.

AWX6035T BODY-PACK WIRELESS TRANSMITTER



1. ANTENNA
2. POWER ON/OFF BUTTON ---When the body-pack transmitter power is off, press this button to turn on. Press this button again to turn off.

3. MICROPHONE INPUT
4. POWER-ON LED INDICATOR --- This LED light is used to indicate that the power is on.
5. LAVALIER MICROPHONE
6. BATTERY COMPARTMENT --- This battery compartment can hold two AA batteries.
7. BELT CLIP --- This clip is used to attach this body-pack transmitter to a belt.

OPERATION

OPERATION NOTES

1. The AWX6035 and AWX6035T need to be turned off before changing the AA batteries.
2. Signal dropout or unexpected noise may be caused by a low battery or by an excessive distance between the transmitter and the receiver. If you encounter signal dropout or unexpected noise, please check the batteries first. If the batteries are still fresh, try to readjust the antennas on the AWR6036U receiver.
3. Avoid placing the receiver in a corner to prevent any RF reception deterioration.
4. Avoid placing the receiver antennas close to an obstruction or close to any metal surface.
5. Try to place the receiver as far away from the digital equipment, including computers and CD players, as possible.
6. If more than one AWR6036U wireless microphone receivers are stacked together or placed in a rack, do not let the antennas touch each other or cross each other.
7. Before the AWR6036U is to be used in a new location, place the AWR6036U receiver at the intended location and walk through the area with the transmitters to locate any radio frequency blind spots, where a momentary loss of sound or short period of noise may occur whenever the transmitters are moved to these spots.
8. Do not drop the transmitter on the floor or strike the transmitter with any object.
9. Always turn off the transmitter and remove the batteries if the transmitter is not to be used for a period of time to prevent the transmitter from being damaged by leaking batteries.

SPECIFICATIONS

AWR6036U RECEIVER

CARRIER FREQUENCY RANGE	UHF BAND
AUDIO OUTPUT	+5 dBu, Max Unbalanced Output
POWER SUPPLY	12-18 V DC
POWER CONSUMPTION	350Ma @13.5V DC
RECEIVING SENSITIVITY	-94dBm

AWX6035 TRANSMITTER

CARRIER FREQUENCY RANGE	UHF BAND
RF POWER	10 mW
BATTERY	2 X 1.5V AA BATTERIES
FREQUENCY RESPONSE	50 - 20,000 Hz
INPUT SENSITIVITY	2.1mV/Pa

POWER CONSUMPTION	<120mA
-------------------	--------

AWM6036U SYSTEM

T.H.D. (OVERALL)	<0.1%
S/N RATIO	≥96dB (A)
CARRIER FREQUENCY RANGE	UHF BAND
MODULATION	DQPSK
BANDWIDTH	300KHz
DYNAMIC RANGE	>90dB (A)
AUDIO SAMPLING	24 Bit/48KHz
TRANSMISSION SYSTEM	PLL SYNTHESIZES
AUDIO DELAY	3mS
AUDIO DECODER	PT LIVE
FREQUENCY RESPONSE	20 - 20,000Hz
SERVICE AREA	100ft

TROUBLESHOOTING

Should problems occur, they are, in many cases, due to simple operation mistakes or the like. On the basis of the following checks, you will be able to rectify a number of problems yourself without difficulty. If the problem cannot be remedied after the following checks, please consult your dealer.

PROBLEM	POSSIBLE CAUSES	SOLUTIONS
No sound and no RF signal.	The power of the transmitter is off.	Turn on the transmitter.
	Incorrect AA-battery polarity in the transmitter.	Correct the AA-battery polarity.
	Bad antenna connection.	Check the antenna connection.
	Transmitter too far away from the antenna or RF signal blocked.	Reposition the transmitter to closer area or remove the RF signal block.
No sound while RF and AF signals normal.	Receiver volume turned to minimum.	Adjust the volume control knob to have an optimal volume output.
	Receiver audio cable is missing or defective.	Connect, repair or replace the audio cables.
	Volume control of the sound system connected to the AWR6036U receiver is set to minimum.	Adjust the volume control on the sound system which is connected to the AWR6036U receiver.
No sound while RF signal is normal and AF signal does not exist.	The microphone cartridge of the transmitter is defective.	Return transmitter to factory or authorized service station for service.
	The mute function on the receiver was turned on.	Turn off the mute function on the receiver If the mute function was not turned on, the SQ level on the receiver might be set too high.
Loud noise from receiver only when the transmitter is off.	Interference signal at that frequency.	Reposition receiver or adjust the antenna orientation.
		Select another operating frequency.

	Receiver is placed too close to an interference source, such as a computer, digital device, or CD player.	Move the receiver to another location.
		Select another operating frequency.
Loud noise from receiver even when the transmitter is on.	Another transmitter is using the same frequency.	Turn off another transmitter or change to a channel with a different frequency.
	Interference signal at that frequency.	Select another operating frequency.
	Receiver is placed too close to an interference source, such as a computer, digital device, or CD player.	Move the receiver to another location. Select another operating frequency.
Distorted sound.	Low transmitter battery level.	Replace transmitter battery.
	The volume control on the receiver is set too high, overloading the subsequent sound device input.	Turn down the volume control on the AWR6036U receiver.
Short range or signal dropouts.	Low transmitter battery level.	Replace transmitter battery.
	Poor antenna reception.	Reposition antenna or receiver.
	Interference Signal.	Select another operating frequency.
Momentary loss of sound when transmitter is moved around the performing area.	Too many obstacles between the receiver and transmitter.	Move the obstacles or move the receiver away from nearby metal objects.
	Radio frequency (RF) blind spots.	Reposition the receiver. If the momentary loss of sound problem cannot be removed, walk through the performing area and mark "Blind" spots. Avoid these "Blind" spots during performance.

SERVICE INFORMATION

SHIPPING DAMAGE

If the shipping carton is found to be damaged, notify the delivery company immediately. Save the damaged carton as evidence for the delivery company to inspect. It is the responsibility of the shipper to file a claim with the delivery company for any damaged that occurs during shipping. In the case that the shipping carton is in good condition but the unit is damaged or defective, call H & F Technologies, incorporated, U.S.A. at 805-523-2759.

WARRANTY PERIOD

For the period of one (1) year from date of original retail or online purchase for parts and 90 days for labor (the Warranty period) from an authorized Audio2000'S® dealer, H & F Technologies, incorporated, U.S.A., warrants that products distributed by H & F Technologies, Incorporated in the U.S.A. that fail to function properly under normal use due to manufacturing defect when installed and operated according to the owner's manual instructions enclosed with the unit will be repaired or replaced with a new or reconditioned product with comparable value, at the discretion of H & F Technologies, incorporated, without charge to you for parts or actual repair work. Parts supplied under this warranty may be new or rebuilt at the option of H & F Technologies, incorporated.

This Warranty period for retail or online customers commences upon the date of retail sale, online sale, or the time that the product is first put into use, whichever occurs first.

This warranty is valid for 90 days from the date of purchase on any product which is used in any trade or business, or in an industrial or commercial application.

PRODUCT

This warranty covers the product during the warranty period with the proof of purchase only. In the event service is required, call H & F Technologies, Incorporated at 805-523-2759 for a Return Authorization number (RA number) and the product must be delivered within the Warranty period, transportation prepaid by the product owner from within the United States. You will be responsible for removal and installation of the product. H & F Technologies, Incorporated will pay for the standard shipping cost for returning the product to you within the continental United States for all necessary repairs or replacements which are covered by the warranty.

No liability will be accepted for damages or loss directly caused from the use of this product. H & F Technologies, Incorporated's liability shall be limited to the repairs or replacements of this product if found to be defective.

WHAT'S NOT COVERED

- 1)Any damage to the products resulting from alteration, modifications not authorized in writing by H & F Technologies, Incorporated, misuse or abuse, neglect, accident, improper installation, damage due to lightning or due to power surges, subsequent damage from leaking, damaged or inoperative batteries or the use of batteries not conforming to those specified in the owner's manual instructions.
- 2)The cost of parts or labor, which would be otherwise provided without charge under this warranty, obtained from any source other than an H & F Technologies, Incorporated Authorized Service Company or other designated location. This warranty does not cover defects or damages caused by the use of unauthorized parts or labor, or from improper maintenance.
- 3)Normal wear and tear of this product, including but not limited to headset and lapel microphones, earphone ear cushions. microphone clip, microphone mesh grille.
- 4)Any product that has been used as a rental unit.

© H & F Technologies, Incorporated (website: www.audio2000s.com)

No liability will be accepted for damages/loss directly caused from the use of this product. H&F's liability shall be limited to the repair/replacement of this product if found to be defective.

© H & F Technologies, Incorporated (website: www.audio2000s.com)