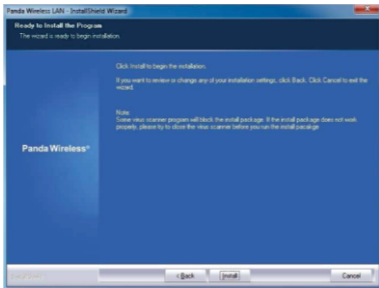


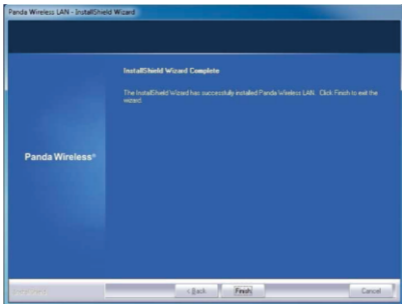
Notes:

Select **"Install driver and WLAN Utility"** if you want to set up your computer as a WiFi Hotspot/WiFi repeater with the Panda adapter.

c. Click the **"Install"** to confirm the installation and then wait a while.



d. Click **"Finish"** to finish the driver installation.

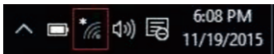


4. How to connect to your own wireless network

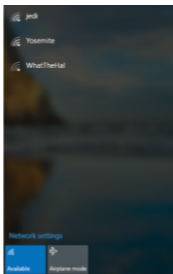
Plug the Panda Wireless® adapter into one of the USB ports of your computer

For Windows 10 / 11:

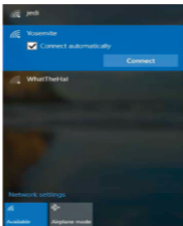
1) You move the mouse to the lower right hand corner of the screen. Select the wireless icon in the red rectangle



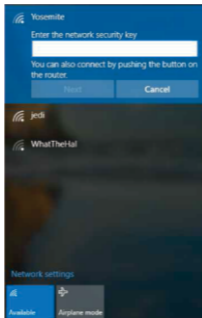
and select your wireless network from the list.



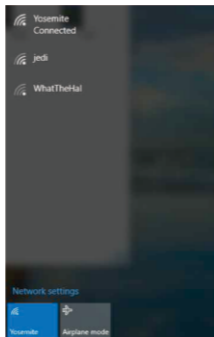
2) Click the "Connect" button to connect to your wireless network.



3) If your wireless network has configured with wireless security, enter the network password. The following is an example for password protected network.



4) Your computer is connected to your wireless network if you see "**Connected**" next to your wireless network.



5. Product Specifications

HARDWARE FEATURES	
Interface	USB3.0
Antenna Type	Two external 3dBi Antennas

WIRELESS FEATURES																																		
Wireless Standards	IEEE 802.11ax, IEEE 802.11ac, IEEE 802.11a IEEE 802.11n, IEEE802.11g, IEEE 802.11b																																	
Frequency Ranges	2.4GHz: 2412MHz---2484MHz 5GHz: 5180MHz---5825MHz 6GHz: 5925MHz---7125MHz (Windows 11 or higher)																																	
Signal Rates	<table border="1"> <thead> <tr> <th>5/6GHz:</th> <th>2.4GHz:</th> </tr> </thead> <tbody> <tr> <td>11ax: Up to 1200Mbps(dynamic)</td> <td>11ax: Up to 600Mbps(dynamic)</td> </tr> <tr> <td>11ac: Up to 867Mbps(dynamic)</td> <td>11n: Up to 300Mbps(dynamic)</td> </tr> <tr> <td>11n: Up to 300Mbps(dynamic)</td> <td>11g: Up to 54Mbps(dynamic)</td> </tr> <tr> <td>11a: Up to 54Mbps(dynamic)</td> <td>11b: Up to 11Mbps(dynamic)</td> </tr> </tbody> </table>	5/6GHz:	2.4GHz:	11ax: Up to 1200Mbps(dynamic)	11ax: Up to 600Mbps(dynamic)	11ac: Up to 867Mbps(dynamic)	11n: Up to 300Mbps(dynamic)	11n: Up to 300Mbps(dynamic)	11g: Up to 54Mbps(dynamic)	11a: Up to 54Mbps(dynamic)	11b: Up to 11Mbps(dynamic)																							
5/6GHz:	2.4GHz:																																	
11ax: Up to 1200Mbps(dynamic)	11ax: Up to 600Mbps(dynamic)																																	
11ac: Up to 867Mbps(dynamic)	11n: Up to 300Mbps(dynamic)																																	
11n: Up to 300Mbps(dynamic)	11g: Up to 54Mbps(dynamic)																																	
11a: Up to 54Mbps(dynamic)	11b: Up to 11Mbps(dynamic)																																	
Wireless Transmitting Power	< 20 dBm																																	
Reception Sensitivity	<table border="1"> <thead> <tr> <th>6GHz:</th> <th>5GHz:</th> <th>2.4GHz:</th> </tr> </thead> <tbody> <tr> <td>11a 6Mbps: -91dBm</td> <td>11a 6Mbps: -93dBm</td> <td>11b 1Mbps: -97dBm</td> </tr> <tr> <td>11a 54Mbps: -73dBm</td> <td>11a 54Mbps: -75dBm</td> <td>11b 11Mbps: -89dBm</td> </tr> <tr> <td>11n HT20 MCS7: -71dBm</td> <td>11n HT20 MCS7: -73dBm</td> <td>11g 6Mbps: -94dBm</td> </tr> <tr> <td>11n HT40 MCS7: -68dBm</td> <td>11n HT40 MCS7: -70dBm</td> <td>11g 54Mbps: -78dBm</td> </tr> <tr> <td>11ac HT20 MCS8: -67dBm</td> <td>11ac HT20 MCS8: -69dBm</td> <td>11n HT20 MCS7: -74dBm</td> </tr> <tr> <td>11ac HT40 MCS9: -62dBm</td> <td>11ac HT40 MCS9: -64dBm</td> <td>11n HT40 MCS7: -71dBm</td> </tr> <tr> <td>11ac HT80 MCS9: -59dBm</td> <td>11ac HT80 MCS9: -61dBm</td> <td>11ax HE20 MCS11: -63dBm</td> </tr> <tr> <td>11ax HE20 MCS11: -60dBm</td> <td>11ax HE20 MCS11: -62dBm</td> <td>11ax HE40 MCS11: -60dBm</td> </tr> <tr> <td>11ax HE40 MCS11: -57dBm</td> <td>11ax HE40 MCS11: -59dBm</td> <td></td> </tr> <tr> <td>11ax HE80 MCS11: -53dBm</td> <td>11ax HE80 MCS11: -55dBm</td> <td></td> </tr> </tbody> </table>	6GHz:	5GHz:	2.4GHz:	11a 6Mbps: -91dBm	11a 6Mbps: -93dBm	11b 1Mbps: -97dBm	11a 54Mbps: -73dBm	11a 54Mbps: -75dBm	11b 11Mbps: -89dBm	11n HT20 MCS7: -71dBm	11n HT20 MCS7: -73dBm	11g 6Mbps: -94dBm	11n HT40 MCS7: -68dBm	11n HT40 MCS7: -70dBm	11g 54Mbps: -78dBm	11ac HT20 MCS8: -67dBm	11ac HT20 MCS8: -69dBm	11n HT20 MCS7: -74dBm	11ac HT40 MCS9: -62dBm	11ac HT40 MCS9: -64dBm	11n HT40 MCS7: -71dBm	11ac HT80 MCS9: -59dBm	11ac HT80 MCS9: -61dBm	11ax HE20 MCS11: -63dBm	11ax HE20 MCS11: -60dBm	11ax HE20 MCS11: -62dBm	11ax HE40 MCS11: -60dBm	11ax HE40 MCS11: -57dBm	11ax HE40 MCS11: -59dBm		11ax HE80 MCS11: -53dBm	11ax HE80 MCS11: -55dBm	
6GHz:	5GHz:	2.4GHz:																																
11a 6Mbps: -91dBm	11a 6Mbps: -93dBm	11b 1Mbps: -97dBm																																
11a 54Mbps: -73dBm	11a 54Mbps: -75dBm	11b 11Mbps: -89dBm																																
11n HT20 MCS7: -71dBm	11n HT20 MCS7: -73dBm	11g 6Mbps: -94dBm																																
11n HT40 MCS7: -68dBm	11n HT40 MCS7: -70dBm	11g 54Mbps: -78dBm																																
11ac HT20 MCS8: -67dBm	11ac HT20 MCS8: -69dBm	11n HT20 MCS7: -74dBm																																
11ac HT40 MCS9: -62dBm	11ac HT40 MCS9: -64dBm	11n HT40 MCS7: -71dBm																																
11ac HT80 MCS9: -59dBm	11ac HT80 MCS9: -61dBm	11ax HE20 MCS11: -63dBm																																
11ax HE20 MCS11: -60dBm	11ax HE20 MCS11: -62dBm	11ax HE40 MCS11: -60dBm																																
11ax HE40 MCS11: -57dBm	11ax HE40 MCS11: -59dBm																																	
11ax HE80 MCS11: -53dBm	11ax HE80 MCS11: -55dBm																																	

Wireless Modes	Ad-Hoc / Infrastructure
Wireless Security	Supports WEP, WPA, WPA2, WPA3
Modulations	DBPSK, DQPSK, CCK, OFDM, 16QAM, 64QAM, 256QAM, 1024QAM

OTHERS	
System Requirements	Windows 11/ 10 and Linux
Environment	Operating Temperature: 0°C~40°C (32°F~104°F) Storage Temperature: -20°C~70°C (-4°F~158°F) Operating Humidity: 10%~90% non-condensing Storage Humidity: 5%~90% non-condensing