



## SAR TEST REPORT

Report Reference No..... : **JTT201607019**

FCC ID..... : **2ADUTLGAU09**

Compiled by

( position+printed name+signature)..: File administrators Kevin Liu

*Kevin Liu*

Supervised by

( position+printed name+signature)..: Project Engineer Kevin Liu

*Kevin Liu*

Approved by

( position+printed name+signature)..: RF Manager Eric Wang

*Eric Wang*

Date of issue.....: August 15, 2016

**Testing Laboratory Name .....** : **Shenzhen Yidajietong Test Technology Co., Ltd.**

Address.....: 3/F., Building 12, Shangsha Innovation & Technology Park, Futian District, Shenzhen, Guangdong, China

**Applicant's name .....** : **Panda Wireless, Inc.**

Address.....: 15559 Union Ave, Suite 300, Los Gatos, California, United States 95032

**Test specification .....** :

Standard .....

**IEEE 1528:2013**

**47CFR §2.1093**

TRF Originator.....: SHENZHEN JIETONG INFORMATION TECHNOLOGY CO., LTD

Master TRF.....: Dated 2014-01

**SHENZHEN JIETONG INFORMATION TECHNOLOGY CO., LTD All rights reserved.**

This publication may be reproduced in whole or in part for non-commercial purposes as long as the SHENZHEN JIETONG INFORMATION TECHNOLOGY CO., LTD as copyright owner and source of the material. SHENZHEN JIETONG INFORMATION TECHNOLOGY CO., LTD takes no responsibility for and will not assume liability for damages resulting from the reader's interpretation of the reproduced material due to its placement and context.

**Test item description .....** : **Panda Wireless N600 Dual Band Wireless N USB Adapter**

Trade Mark .....

Panda Wireless

Manufacturer .....

**Panda Wireless, Inc.**

Model/Type reference.....: PAU09

Listed Models .....

/

Ratings.....: DC 5.0 from USB

EUT Type .....

Production Unit

Exposure category.....: General population / Uncontrolled environment

Result.....: **PASS**

**TEST REPORT**

<b>Test Report No. :</b>	<b>JTT201607019</b>	August 15, 2016
		Date of issue

Equipment under Test : **Panda Wireless N600 Dual Band Wireless N USB Adapter**

Model /Type : PAU09

Listed Models : /

**Applicant** : **Panda Wireless, Inc.**

Address : 15559 Union Ave, Suite 300, Los Gatos, California, United States 95032

**Manufacturer** : **Panda Wireless, Inc.**

Address : 15559 Union Ave, Suite 300, Los Gatos, California, United States 95032

<b>Test Result:</b>	<b>PASS</b>
---------------------	-------------

The test report merely corresponds to the test sample.  
It is not permitted to copy extracts of these test result without the written permission of the test laboratory.

**\*\* Modified History \*\***

<b>Revison</b>	<b>Description</b>	<b>Issued Data</b>	<b>Remark</b>
Revsion 1.0	Initial Test Report Release	2016-08-15	Eric Wang

## Contents

<b>1.</b>	<b><u>TEST STANDARDS</u></b>	<b>5</b>
<b>2.</b>	<b><u>SUMMARY</u></b>	<b>6</b>
2.1.	General Remarks	6
2.2.	Product Description	6
2.3.	Summary SAR Results	6
2.4.	Equipment under Test	7
2.5.	EUT operation mode	7
<b>3.</b>	<b><u>TEST ENVIRONMENT</u></b>	<b>8</b>
3.1.	Address of the test laboratory	8
3.2.	Test Facility	8
3.3.	Environmental conditions	8
3.4.	SAR Limits	8
3.5.	Equipments Used during the Test	9
<b>4.</b>	<b><u>SAR MEASUREMENTS SYSTEM CONFIGURATION</u></b>	<b>10</b>
4.1.	SAR Measurement Set-up	10
4.2.	DASY5 E-field Probe System	11
4.3.	Phantoms	11
4.4.	Device Holder	12
4.5.	Scanning Procedure	12
4.6.	Data Storage and Evaluation	13
4.7.	SAR Measurement System	14
4.8.	Dielectric Performance	15
4.9.	System Check	15
4.10.	Measurement Procedures	17
4.11.	Operational Conditions during Test	21
4.12.	Position of the wireless device in relation to the phantom	21
4.13.	Test Configuration	21
4.14.	Power Drift	24
<b>5.</b>	<b><u>TEST CONDITIONS AND RESULTS</u></b>	<b>25</b>
5.1.	Conducted Power Results	25
5.2.	Manufacturing tolerance	30
5.3.	Transmit Antennas Position	32
5.4.	Standalone SAR Test Exclusion Considerations	32
5.5.	SAR Measurement Results	34
5.6.	SAR Reporting Results	35
5.7.	SAR Measurement Variability	38
5.8.	Measurement Uncertainty (100-300MHz)	39
5.9.	System Check Results	40
5.10.	SAR Test Graph Results	43
<b>6.</b>	<b><u>CALIBRATION CERTIFICATE</u></b>	<b>65</b>
6.1.	Probe Calibration Certificate	65
6.2.	D2450V2 Dipole Calibration Certificate	76
6.3.	D5GHzV2 Dipole Calibration Certificate	84
6.4.	DAE4 Calibration Certificate	103
<b>7.</b>	<b><u>TEST SETUP PHOTOS</u></b>	<b>107</b>
<b>8.</b>	<b><u>EXTERNAL PHOTOS OF THE EUT</u></b>	<b>109</b>

# **1. TEST STANDARDS**

The tests were performed according to following standards:

[IEEE 1528-2013 \(2014-06\)](#): Recommended Practice for Determining the Peak Spatial-Average Specific Absorption Rate (SAR) in the Human Head from Wireless Communications Devices: Measurement Techniques

[IEEE Std. C95-3 \(2002\)](#): IEEE Recommended Practice for the Measurement of Potentially Hazardous Electromagnetic Fields – RF and Microwave

[IEEE Std. C95-1 \(1992\)](#): IEEE Standard for Safety Levels with Respect to Human Exposure to Radio Frequency Electromagnetic Fields, 3 kHz to 300 GHz.

[KDB 865664D01v01r04 \(August 7, 2015\)](#): SAR Measurement Requirements for 100 MHz to 6 GHz

[KDB 865664D02v01r02 \(October 23, 2015\)](#): RF Exposure Compliance Reporting and Documentation Considerations

[KDB 447498 D01 General RF Exposure Guidance v06 \(October 23, 2015\)](#): Mobile and Portable Devices RF Exposure Procedures and Equipment Authorization Policies

[KDB447498 D03 Supplement C Cross-Reference v01 \(January 17, 2014\)](#): Mobile and Portable Device RF Exposure Procedures and Equipment Authorization Policies

[KDB447498 D02 SAR Procedures for Dongle Xmtr v02r01 \(October 23, 2015\)](#): SAR MEASUREMENT PROCEDURES FOR USB DONGLE TRANSMITTERS

[KDB248227 D01 802.11 Wi-Fi SAR v02r02](#): SAR GUIDANCE FOR IEEE 802.11 (Wi-Fi) TRANSMITTERS

## 2. SUMMARY

### 2.1. General Remarks

Date of receipt of test sample	:	July 26, 2016
Testing commenced on	:	July 27, 2016
Testing concluded on	:	July 29, 2016

### 2.2. Product Description

EUT Name	:	Panda Wireless N600 Dual Band Wireless N USB Adapter
Model Number	:	PAU09
Trade Mark	:	Panda Wireless
EUT function description	:	Please reference user manual of this device
Power supply	:	DC 5.0V from USB
Operation frequency range	:	2412 MHz – 2462 MHz 5180 MHz – 5240 MHz 5745 MHz – 5825 MHz
Modulation type	:	DSSS, OFDM
Antenna Type	:	External and rotate antenna; 2T2R MIMO device, use same type antenna
Date of Receipt	:	2016/06/26
Device Type	:	Portable
Sample Type	:	Prototype Unit
Exposure category:	:	General population / Uncontrolled environment

### 2.3. Summary SAR Results

The maximum of results of SAR found during testing for PAU09 are follows:

<Highest Reported standalone SAR Summary>

#### **Body Configuration**

Frequency Band	Mode	Test Position	Channel /Frequency(MHz)	Reported SAR <sub>1g</sub> (W/kg)
2.4GHz	IEEE 802.11n HT20 MIMO	Test Position 3	6/2437	0.482
5.2GHz	IEEE 802.11n HT20 MIMO	Test Position 3	36/5180	0.166
5.8GHz	IEEE 802.11n HT40 MIMO	Test Position 3	159/5795	0.083

This device is in compliance with Specific Absorption Rate (SAR) for general population/uncontrolled exposure limits (1.6 W/kg) specified in FCC 47 CFR part 2 (2.1093) and ANSI/IEEE C95.1-2005, and had been tested in accordance with the measurement methods and procedures specified in IEEE 1528-2013.

## 2.4. Equipment under Test

### Power supply system utilised

Power supply voltage	:	<input type="radio"/>	120V / 60 Hz	<input type="radio"/>	115V / 60Hz
		<input type="radio"/>	12 V DC	<input type="radio"/>	24 V DC
		<input checked="" type="radio"/>	Other (specified in blank below)		

DC 5.0 V from USB

## 2.5. EUT operation mode

The spatial peak SAR values were assessed for USB dongle.

The sample enter into 100% duty cycle continuous transmit controlled by software RT5572 QA tools V1[1].0.4.8 provied by application.

### 3. TEST ENVIRONMENT

#### 3.1. Address of the test laboratory

##### **Shenzhen Yidajietong Test Technology Co., Ltd.**

3/F., Building 12, Shangsha Innovation & Technology Park, Futian District, Shenzhen, Guangdong, China

#### 3.2. Test Facility

The test facility is recognized, certified, or accredited by the following organizations:

##### **CNAS-Lab Code: L7547**

The Testing and Technology Center for SHENZHEN YIDA JIETONG INFORMATION TECHNOLOGY CO., LTD has been assessed and proved to be in compliance with CNAS-CL01 Accreditation Criteria for Testing and Calibration Laboratories (identical to ISO/IEC 17025: 2005 General Requirements) for the Competence of Testing and Calibration Laboratories, Date of Registration: March, 2015. Valid time is until March, 2018.

#### 3.3. Environmental conditions

During the measurement the environmental conditions were within the listed ranges:

Temperature:	18-25 ° C
Humidity:	40-65 %
Atmospheric pressure:	950-1050mbar

#### 3.4. SAR Limits

FCC Limit (1g Tissue)

Exposure Limits	SAR (W/kg)	
	(General Population / Uncontrolled Exposure Environment)	(Occupational / Controlled Exposure Environment)
Spatial Average (averaged over the whole body)	0.08	0.4
Spatial Peak (averaged over any 1 g of tissue)	1.60	8.0
Spatial Peak (hands/wrists/feet/ankles averaged over 10 g)	4.0	20.0

Population/Uncontrolled Environments are defined as locations where there is the exposure of individual who have no knowledge or control of their exposure.

Occupational/Controlled Environments are defined as locations where there is exposure that may be incurred by people who are aware of the potential for exposure (i.e. as a result of employment or occupation).



### 3.5. Equipments Used during the Test

Test Equipment	Manufacturer	Type/Model	Serial Number	Calibration	
				Last Calibration	Calibration Interval
Data Acquisition Electronics DAEx	SPEAG	DAE4	760	2016/06/24	1
E-field Probe	SPEAG	EX3DV4	3836	2016/07/07	1
System Validation Dipole D2450V2	SPEAG	D2450V2	818	2015/09/14	3
System Validation Dipole D5GHzV2	SPEAG	D5GV2	1185	2014/08/22	3
Network analyzer	Agilent	8753E	US37390562	2016/03/05	1
Dielectric Probe Kit	Agilent	85070E	US44020288	/	/
Power meter	Agilent	E4417A	GB41292254	2015/12/15	1
Power sensor	Agilent	8481H	MY41095360	2015/12/15	1
Power sensor	Agilent	8481H	MY41095361	2015/12/15	1
Signal generator	IFR	2032	203002/100	2015/10/12	1
Amplifier	AR	75A250	302205	2015/10/12	1

Note:

- 1) Per KDB865664D01 requirements for dipole calibration, the test laboratory has adopted three year extended calibration interval. Each measured dipole is expected to evaluate with following criteria at least on annual interval.
  - a) There is no physical damage on the dipole;
  - b) System check with specific dipole is within 10% of calibrated values;
  - c) The most recent return-loss results, measured at least annually, deviates by no more than 20% from the previous measurement;
  - d) The most recent measurement of the real or imaginary parts of the impedance, measured at least annually is within 50  $\Omega$  from the previous measurement.
- 2) Network analyzer probe calibration against air, distilled water and a shorting block performed before measuring liquid parameters.

## 4. SAR Measurements System configuration

### 4.1. SAR Measurement Set-up

The DASY5 system for performing compliance tests consists of the following items:

A standard high precision 6-axis robot (Stäubli RX family) with controller and software. An arm extension for accommodating the data acquisition electronics (DAE).

A dosimetric probe, i.e. an isotropic E-field probe optimized and calibrated for usage in tissue simulating liquid. The probe is equipped with an optical surface detector system.

A data acquisition electronic (DAE) which performs the signal amplification, signal multiplexing, AD-conversion, offset measurements, mechanical surface detection, collision detection, etc. The unit is battery powered with standard or rechargeable batteries. The signal is optically transmitted to the EOC.

A unit to operate the optical surface detector which is connected to the EOC.

The Electro-Optical Coupler (EOC) performs the conversion from the optical into a digital electric signal of the DAE. The EOC is connected to the DASY5 measurement server.

The DASY5 measurement server, which performs all real-time data evaluation for field measurements and surface detection, controls robot movements and handles safety operation. A computer operating Windows 2003.

DASY5 software and SEMCAD data evaluation software.

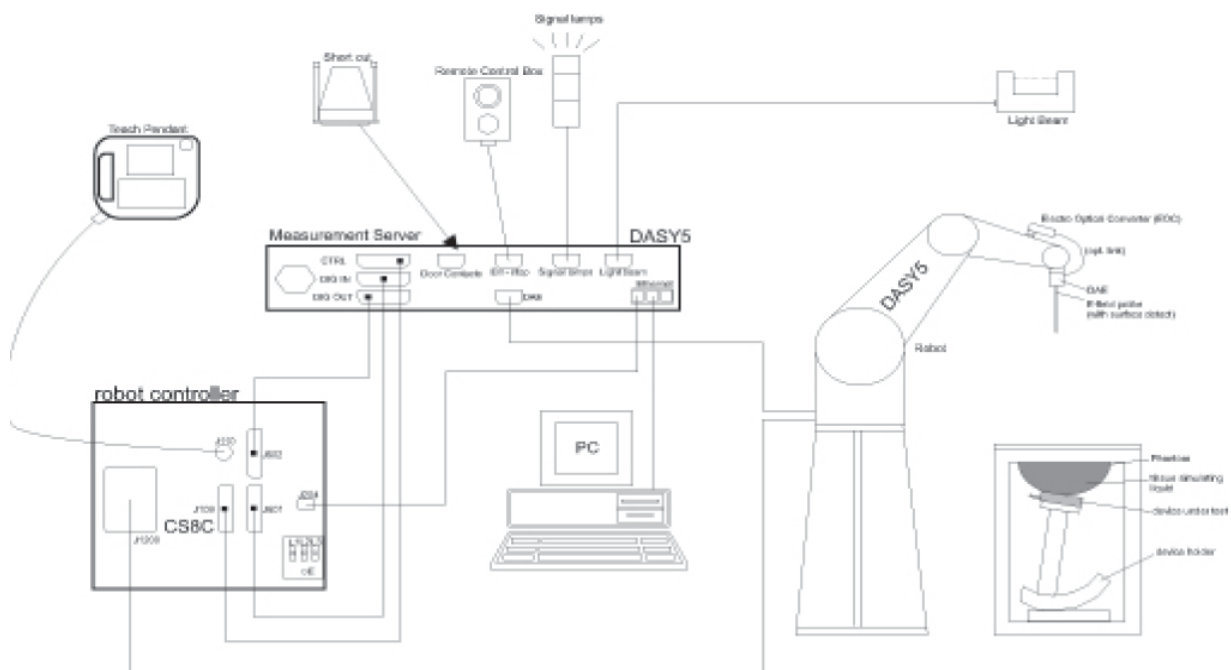
Remote control with teach panel and additional circuitry for robot safety such as warning lamps, etc.

The generic twin phantom enabling the testing of left-hand and right-hand usage.

The device holder for handheld Mobile Phones.

Tissue simulating liquid mixed according to the given recipes.

System validation dipoles allowing to validate the proper functioning of the system.



### 4.2. DASY5 E-field Probe System

The SAR measurements were conducted with the dosimetric probe ES3DV3 (manufactured by SPEAG), designed in the classical triangular configuration and optimized for dosimetric evaluation.

#### Probe Specification

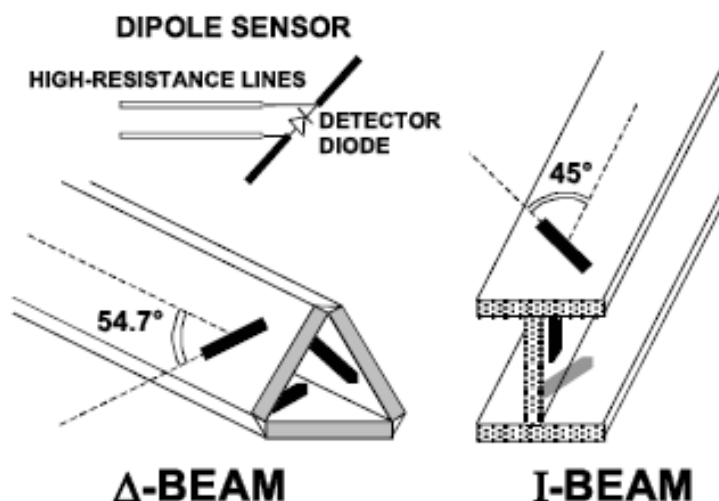
Construction	Symmetrical design with triangular core Interleaved sensors Built-in shielding against static charges PEEK enclosure material (resistant to organic solvents, e.g., DGBE)
Calibration	ISO/IEC 17025 calibration service available.
Frequency	10 MHz to 4 GHz; Linearity: ± 0.2 dB (30 MHz to 4 GHz)
Directivity	± 0.2 dB in HSL (rotation around probe axis) ± 0.3 dB in tissue material (rotation normal to probe axis)
Dynamic Range	5 µW/g to > 100 mW/g; Linearity: ± 0.2 dB
Dimensions	Overall length: 337 mm (Tip: 20 mm) Tip diameter: 3.9 mm (Body: 12 mm) Distance from probe tip to dipole centers: 2.0 mm
Application	General dosimetry up to 4 GHz Dosimetry in strong gradient fields Compliance tests of Mobile Phones
Compatibility	DASY3, DASY4, DASY52 SAR and higher, EASY4/MRI



#### Isotropic E-Field Probe

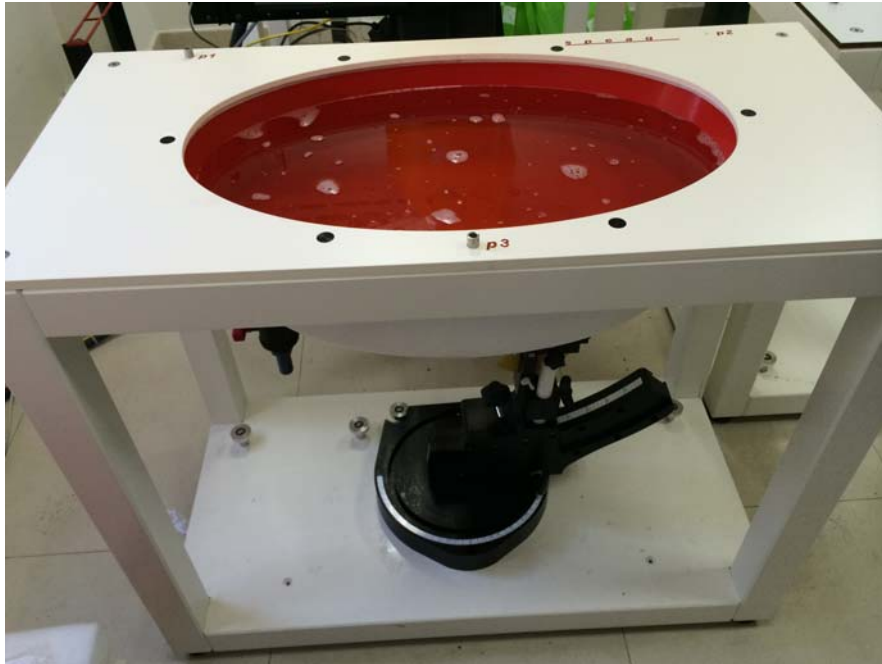
The isotropic E-Field probe has been fully calibrated and assessed for isotropicity, and boundary effect within a controlled environment. Depending on the frequency for which the probe is calibrated the method utilized for calibration will change.

The E-Field probe utilizes a triangular sensor arrangement as detailed in the diagram below:



### 4.3. Phantoms

Phantom for compliance testing of handheld and body-mounted wireless devices in the frequency range of 30 MHz to 6 GHz. ELI is fully compatible with the IEC 62209-2 standard and all known tissue-simulating liquids. ELI has been optimized regarding its performance and can be integrated into our standard phantom tables. A cover prevents evaporation of the liquid. Reference markings on the phantom allow installation of the complete setup, including all predefined phantom positions and measurement grids, by teaching three points. The phantom is compatible with all SPEAG dosimetric probes and dipoles.

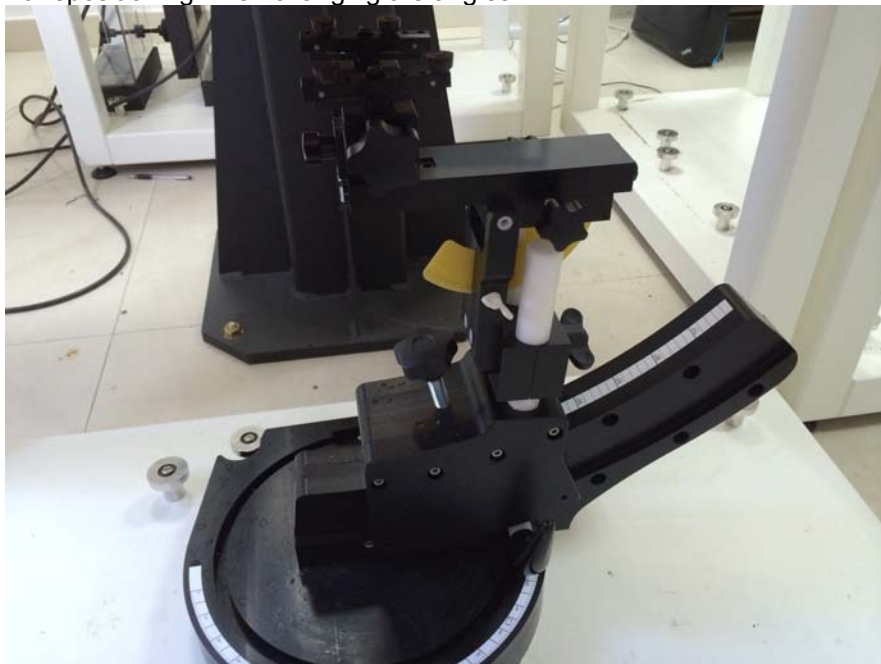


ELI Phantom

#### 4.4. Device Holder

The device was placed in the device holder (illustrated below) that is supplied by SPEAG as an integral part of the DASY system.

The DASY device holder is designed to cope with the different positions given in the standard. It has two scales for device rotation (with respect to the body axis) and device inclination (with respect to the line between the ear reference points). The rotation centers for both scales is the ear reference point (ERP). Thus the device needs no repositioning when changing the angles.



Device holder supplied by SPEAG

#### 4.5. Scanning Procedure

The DASY5 installation includes predefined files with recommended procedures for measurements and validation. They are read-only document files and destined as fully defined but unmeasured masks. All test positions (head or body-worn) are tested with the same configuration of test steps differing only in the grid definition for the different test positions.

The “reference” and “drift” measurements are located at the beginning and end of the batch process. They measure the field drift at one single point in the liquid over the complete procedure. The indicated drift is mainly the variation of the DUT's output power and should vary max.  $\pm 5\%$ .

The “surface check” measurement tests the optical surface detection system of the DASY5 system by repeatedly detecting the surface with the optical and mechanical surface detector and comparing the results. The output gives the detecting heights of both systems, the difference between the two systems and the standard deviation of the detection repeatability. Air bubbles or refraction in the liquid due to separation of the sugar-water mixture gives poor repeatability (above  $\pm 0.1$  mm). To prevent wrong results tests are only executed when the liquid is free of air bubbles. The difference between the optical surface detection and the actual surface depends on the probe and is specified with each probe (It does not depend on the surface reflectivity or the probe angle to the surface within  $\pm 30^\circ$ .)

#### Area Scan

The Area Scan is used as a fast scan in two dimensions to find the area of high field values before running a detailed measurement around the hot spot. Before starting the area scan a grid spacing of 15 mm x 15 mm is set. During the scan the distance of the probe to the phantom remains unchanged. After finishing area scan, the field maxima within a range of 2 dB will be ascertained.

#### Zoom Scan

Zoom Scans are used to estimate the peak spatial SAR values within a cubic averaging volume containing 1 g and 10 g of simulated tissue. The default Zoom Scan is done by 7x7x7 points within a cube whose base is centered around the maxima found in the preceding area scan.

#### Spatial Peak Detection

The procedure for spatial peak SAR evaluation has been implemented and can determine values of masses of 1g and 10g, as well as for user-specific masses. The DASY5 system allows evaluations that combine measured data and robot positions, such as: • maximum search • extrapolation • boundary correction • peak search for averaged SAR. During a maximum search, global and local maxima searches are automatically performed in 2-D after each Area Scan measurement with at least 6 measurement points. It is based on the evaluation of the local SAR gradient calculated by the Quadratic Shepard's method. The algorithm will find the global maximum and all local maxima within -2 dB of the global maxima for all SAR distributions.

Extrapolation routines are used to obtain SAR values between the lowest measurement points and the inner phantom surface. The extrapolation distance is determined by the surface detection distance and the probe sensor offset. Several measurements at different distances are necessary for the extrapolation. Extrapolation routines require at least 10 measurement points in 3-D space. They are used in the Zoom Scan to obtain SAR values between the lowest measurement points and the inner phantom surface. The routine uses the modified Quadratic Shepard's method for extrapolation. For a grid using 7x7x7 measurement points with 5mm resolution amounting to 343 measurement points, the uncertainty of the extrapolation routines is less than 1% for 1g and 10g cubes.

A Z-axis scan measures the total SAR value at the x- and y-position of the maximum SAR value found during the cube 7x7x7 scan. The probe is moved away in z-direction from the bottom of the SAM phantom in 5mm steps.

## 4.6. Data Storage and Evaluation

### Data Storage

The DASY5 software stores the acquired data from the data acquisition electronics as raw data (in microvolt readings from the probe sensors), together with all necessary software parameters for the data evaluation (probe calibration data, liquid parameters and device frequency and modulation data) in measurement files with the extension “.DA4”. The software evaluates the desired unit and format for output each time the data is visualized or exported. This allows verification of the complete software setup even after the measurement and allows correction of incorrect parameter settings. For example, if a measurement has been performed with a wrong crest factor parameter in the device setup, the parameter can be corrected afterwards and the data can be re-evaluated.

The measured data can be visualized or exported in different units or formats, depending on the selected probe type ([V/m], [A/m], [°C], [mW/g], [mW/cm<sup>2</sup>], [dBrel], etc.). Some of these units are not available in certain situations or show meaningless results, e.g., a SAR output in a lossless media will always be zero. Raw data can also be exported to perform the evaluation with other software packages.

### Data Evaluation

The SEMCAD software automatically executes the following procedures to calculate the field units from the microvolt readings at the probe connector. The parameters used in the evaluation are stored in the configuration modules of the software:

Probe parameters:	- Sensitivity	Normi, ai0, ai1, ai2
	- Conversion factor	ConvFi
	- Diode compression point	Dcpi

Device parameters: - Frequency	f
- Crest factor	cf
Media parameters: - Conductivity	$\sigma$
- Density	$\rho$

These parameters must be set correctly in the software. They can be found in the component documents or they can be imported into the software from the configuration files issued for the DASY5 components. In the direct measuring mode of the multimeter option, the parameters of the actual system setup are used. In the scan visualization and export modes, the parameters stored in the corresponding document files are used.

The first step of the evaluation is a linearization of the filtered input signal to account for the compression characteristics of the detector diode. The compensation depends on the input signal, the diode type and the DC-transmission factor from the diode to the evaluation electronics. If the exciting field is pulsed, the crest factor of the signal must be known to correctly compensate for peak power. The formula for each channel can be given as:

$$V_i = U_i + U_i^2 \cdot \frac{cf}{dcp_i}$$

With $V_i$	= compensated signal of channel i	(i = x, y, z)
$U_i$	= input signal of channel i	(i = x, y, z)
cf	= crest factor of exciting field	(DASY parameter)
dcp <sub>i</sub>	= diode compression point	(DASY parameter)

From the compensated input signals the primary field data for each channel can be evaluated:

$$\text{E - fieldprobes : } E_i = \sqrt{\frac{V_i}{\text{Norm}_i \cdot \text{ConvF}}}$$

$$\text{H - fieldprobes : } H_i = \sqrt{V_i} \cdot \frac{a_{i0} + a_{i1}f + a_{i2}f^2}{f}$$

With $V_i$	= compensated signal of channel i	(i = x, y, z)
$\text{Norm}_i$	= sensor sensitivity of channel i	(i = x, y, z)
	[mV/(V/m) <sup>2</sup> ] for E-field Probes	
ConvF	= sensitivity enhancement in solution	
$a_{ij}$	= sensor sensitivity factors for H-field probes	
f	= carrier frequency [GHz]	
$E_i$	= electric field strength of channel i in V/m	
$H_i$	= magnetic field strength of channel i in A/m	

The RSS value of the field components gives the total field strength (Hermitian magnitude):

$$E_{tot} = \sqrt{E_x^2 + E_y^2 + E_z^2}$$

The primary field data are used to calculate the derived field units.

$$SAR = E_{tot}^2 \cdot \frac{\sigma}{\rho \cdot 1'000}$$

with SAR	= local specific absorption rate in mW/g
$E_{tot}$	= total field strength in V/m
$\sigma$	= conductivity in [mho/m] or [Siemens/m]
$\rho$	= equivalent tissue density in g/cm <sup>3</sup>

Note that the density is normally set to 1 (or 1.06), to account for actual brain density rather than the density of the simulation liquid.

#### 4.7. SAR Measurement System

The SAR measurement system being used is the DASY5 system, the system is controlled remotely from a PC, which contains the software to control the robot and data acquisition equipment. The software also displays the data obtained from test scans.

In operation, the system first does an area (2D) scan at a fixed depth within the liquid from the inside wall of the phantom. When the maximum SAR point has been found, the system will then carry out a 3D scan centred at that point to determine volume averaged SAR level.

#### 4.7.1 Tissue Dielectric Parameters for Head and Body Phantoms

The liquid is consisted of water,salt,Glycol,Sugar,Preventol and Cellulose.The liquid has previously been proven to be suited for worst-case. It's satisfying the latest tissue dielectric parameters requirements proposed by the KDB865664.

Target Frequency (MHz)	Head		Body	
	$\epsilon_r$	$\sigma$ (S/m)	$\epsilon_r$	$\sigma$ (S/m)
150	52.3	0.76	61.9	0.80
300	45.3	0.87	58.2	0.92
450	43.5	0.87	56.7	0.94
835	41.5	0.90	55.2	0.97
900	41.5	0.97	55.0	1.05
915	41.5	0.98	55.0	1.06
1450	40.5	1.20	54.0	1.30
1610	40.3	1.29	53.8	1.40
1800-2000	40.0	1.40	53.3	1.52
2450	39.2	1.80	52.7	1.95
3000	38.5	2.40	52.0	2.73
5800	35.3	5.27	48.2	6.00

( $\epsilon_r$  = relative permittivity,  $\sigma$  = conductivity and  $\rho$  = 1000 kg/m<sup>3</sup>)

#### 4.8. Dielectric Performance

Dielectric performance of Body tissue simulating liquid.

Ingredient (% Weight)	2450MHz		5200MHz		5800MHz	
	Head	Body	Head	Body	Head	Body
Water	62.7	73.2	65.53	72.60	65.53	72.60
Salt	0.50	0.10	0.00	0.00	0.00	0.00
Sugar	0.00	0.00	0.00	0.00	0.00	0.00
Triton X-100	0.00	0.00	17.23	0.10	17.23	0.10
Preventol	0.00	0.00	0.00	0.00	0.00	0.00
HEC	0.00	0.00	0.00	0.00	0.00	0.00
Diethylenglycol monoheylether	0.00	0.00	17.24	27.30	17.24	27.30
Glycol	36.8	26.7	0.00	0.00	0.00	0.00

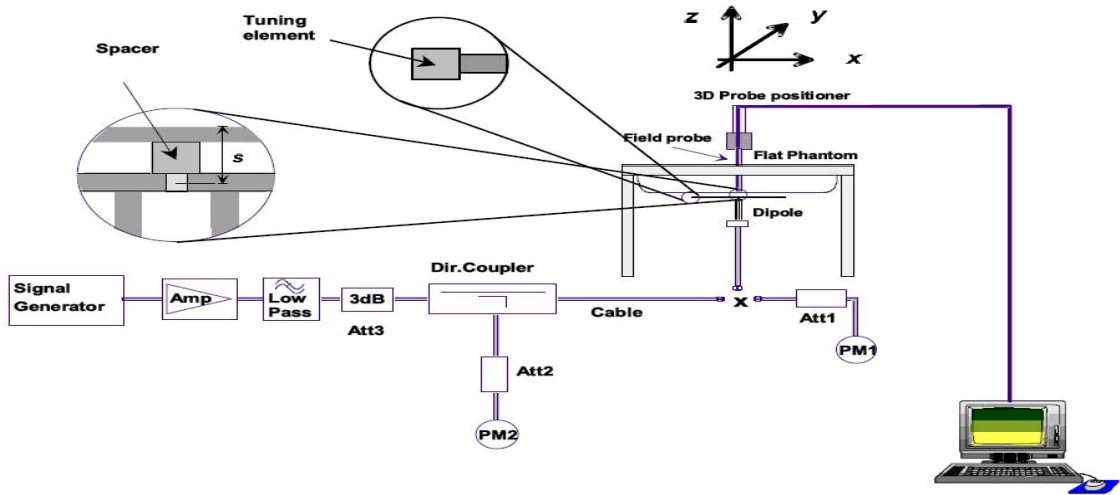
Tissue Type	Measured Frequency (MHz)	Target Tissue		Measured Tissue				Liquid Temp.	Test Data
		$\epsilon_r$	$\sigma$	$\epsilon_r$	Dev. %	$\sigma$	Dev. %		
2450B	2450	52.7	1.95	52.3	-0.76%	1.98	1.54%	22.2 degree	2016-07-27
5200B	5200	49.0	5.30	48.4	-1.22%	5.16	-2.64%	22.2 degree	2016-07-28
5800B	5800	48.2	6.00	47.1	-2.28%	6.22	3.67%	22.2 degree	2016-07-29

#### 4.9. System Check

The purpose of the system check is to verify that the system operates within its specifications at the decide test frequency.The system check is simple check of repeatability to make sure that the system works correctly at the time of the compliance test;

System check results have to be equal or near the values determined during dipole calibration with the relevant liquids and test system ( $\pm 10$  %).

System check is performed regularly on all frequency bands where tests are performed with the DASY5 system.



The output power on dipole port must be calibrated to 20 dBm (100mW) before dipole is connected.

**Justification for Extended SAR Dipole Calibrations**

Referring to KDB 865664D01V01r04, if dipoles are verified in return loss (<-20dB, within 20% of prior calibration), and in impedance (within 5 ohm of prior calibration), the annual calibration is not necessary and the calibration interval can be extended. While calibration intervals not exceed 3 years.

D5GHzV2, Serial No.: 1185 Extend Dipole Calibrations

5.2GHz Head						
Date of Measurement	Return-Loss (dB)	Delta (%)	Real Impedance (ohm)	Delta (ohm)	Imaginary Impedance (ohm)	Delta (ohm)
2014-08-22	-22.300		48.800		-7.500	
2015-08-24	-21.870	1.928%	50.200	1.400	-6.1187	1.3813
5.2GHz Body						
Date of Measurement	Return-Loss (dB)	Delta (%)	Real Impedance (ohm)	Delta (ohm)	Imaginary Impedance (ohm)	Delta (ohm)
2014-08-22	-23.700		49.000		-6.400	
2015-08-24	-23.022	2.861%	49.794	0.794	-9.9234	-3.5234
5.8GHz Head						
Date of Measurement	Return-Loss (dB)	Delta (%)	Real Impedance (ohm)	Delta (ohm)	Imaginary Impedance (ohm)	Delta (ohm)
2014-08-22	-29.300		55.900		0.6	
2015-08-24	-29.646	-1.181%	52.365	-3.535	-0.33877	-0.93877
5.8GHz Body						
Date of Measurement	Return-Loss (dB)	Delta (%)	Real Impedance (ohm)	Delta (ohm)	Imaginary Impedance (ohm)	Delta (ohm)
2014-08-22	-23.400		56.900		2.2000	
2015-08-24	-28.000	-19.66%	52.532	-4.368	2.9515	0.7515

**System Check in Body Tissue Simulating Liquid**

Freq	Test Date	Dielectric Parameters		Temp	100mW Measured	1W Normalized	1W Target	Limit (±10% Deviation)
		$\epsilon_r$	$\sigma$ (s/m)		SAR <sub>1g</sub>	SAR <sub>1g</sub>	SAR <sub>1g</sub>	SAR <sub>1g</sub>
2450 MHz	2016-07-27	52.3	1.98	22.2	4.98	49.8	51.1	-2.54%
5200 MHz	2016-07-28	48.4	5.16	22.2	7.12	71.2	75.7	-5.94%
5800 MHz	2016-07-29	47.1	6.22	22.2	7.41	74.1	76.8	-3.52%



## 4.10. Measurement Procedures

### Tests to be performed

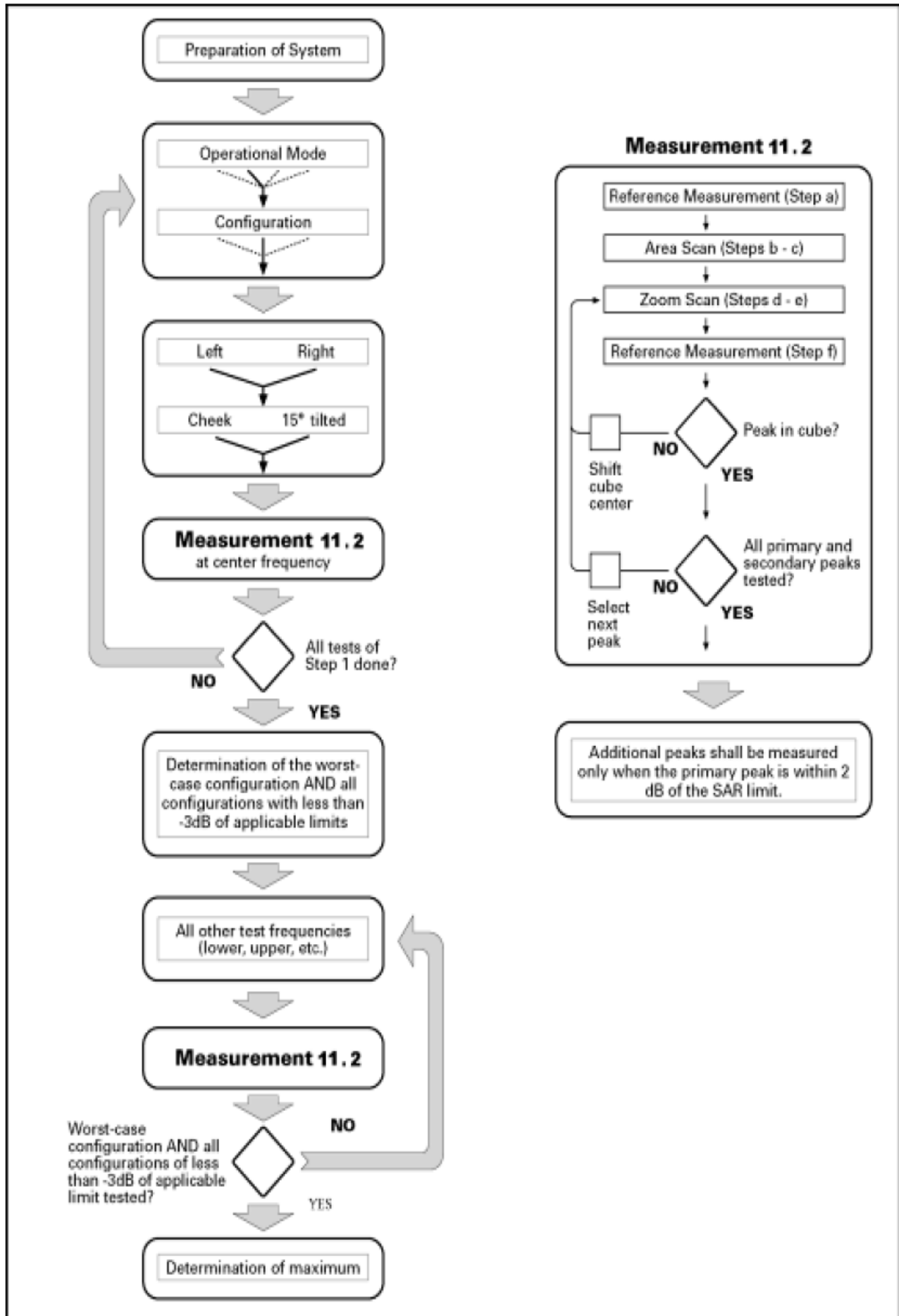
In order to determine the highest value of the peak spatial-average SAR of a handset, all device positions, configurations and operational modes shall be tested for each frequency band according to steps 1 to 3 below. A flowchart of the test process is shown in Picture 11

Step 1: The tests described in 11.2 shall be performed at the channel that is closest to the centre of the transmit frequency band ( $f_c$ ) for:

- a) all device positions (cheek and tilt, for both left and right sides of the SAM phantom, as described in Chapter 8),
- b) all configurations for each device position in a), e.g., antenna extended and retracted, and
- c) all operational modes, e.g., analogue and digital, for each device position in a) and configuration in b) in each frequency band.
- d) If more than three frequencies need to be tested according to 11.1 (i.e.,  $N_c > 3$ ), then all frequencies, configurations and modes shall be tested for all of the above test conditions.

Step 2: For the condition providing highest peak spatial-average SAR determined in Step 1, perform all tests described in 11.2 at all other test frequencies, i.e., lowest and highest frequencies. In addition, for all other conditions (device position, configuration and operational mode) where the peak spatial-average SAR value determined in Step 1 is within 3 dB of the applicable SAR limit, it is recommended that all other test frequencies shall be tested as well.

Step 3: Examine all data to determine the highest value of the peak spatial-average SAR found in Steps 1 to 2.



Picture 11 Block diagram of the tests to be performed

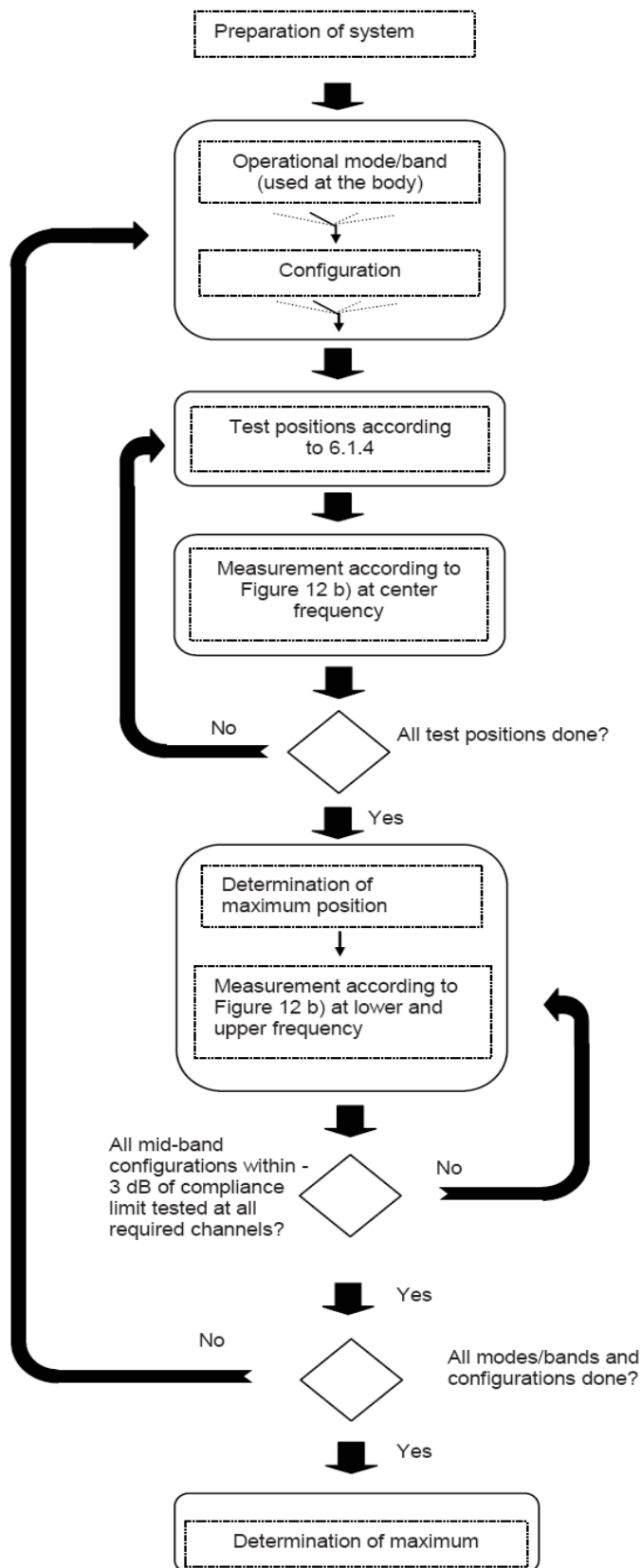


Figure 12a – Tests to be performed

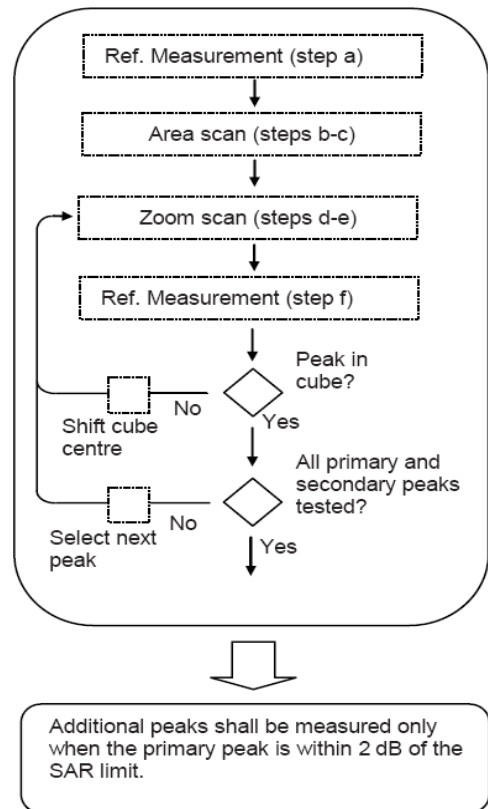


Figure 12b – General procedure

Picture 12 Block diagram of the tests to be performed

**Measurement procedure**

- The following procedure shall be performed for each of the test conditions (see Picture 11) described in 11.1:
- a) Measure the local SAR at a test point within 8 mm or less in the normal direction from the inner surface of the phantom.
  - b) Measure the two-dimensional SAR distribution within the phantom (area scan procedure). The boundary of the measurement area shall not be closer than 20 mm from the phantom side walls. The distance between the measurement points should enable the detection of the location of local maximum with an

accuracy of better than half the linear dimension of the tissue cube after interpolation. A maximum grip spacing of 20 mm for frequencies below 3 GHz and  $(60/f \text{ [GHz]})$  mm for frequencies of 3GHz and greater is recommended. The maximum distance between the geometrical centre of the probe detectors and the inner surface of the phantom shall be 5 mm for frequencies below 3 GHz and  $\delta \ln(2)/2$  mm for frequencies of 3 GHz and greater, where  $\delta$  is the plane wave skin depth and  $\ln(x)$  is the natural logarithm. The maximum variation of the sensor-phantom surface shall be  $\pm 1$  mm for frequencies below 3 GHz and  $\pm 0.5$  mm for frequencies of 3 GHz and greater. At all measurement points the angle of the probe with respect to the line normal to the surface should be less than  $5^\circ$ . If this cannot be achieved for a measurement distance to the phantom inner surface shorter than the probe diameter, additional measurement distance to the phantom inner surface shorter than the probe diameter, additional

- c) From the scanned SAR distribution, identify the position of the maximum SAR value, in addition identify the positions of any local maxima with SAR values within 2 dB of the maximum value that are not within the zoom-scan volume; additional peaks shall be measured only when the primary peak is within 2 dB of the SAR limit. This is consistent with the 2 dB threshold already stated;
- d) Measure the three-dimensional SAR distribution at the local maxima locations identified in step
- e) The horizontal grid step shall be  $(24 / f[\text{GHz}])$  mm or less but not more than 8 mm. The minimum zoom size of 30 mm by 30 mm and 30 mm for frequencies below 3 GHz. For higher frequencies, the minimum zoom size of 22 mm by 22 mm and 22 mm. The grip step in the vertical direction shall be  $(8-f[\text{GHz}])$  mm or less but not more than 5 mm, if uniform spacing is used. If variable spacing is used in the vertical direction, the maximum spacing between the two closest measured points to the phantom shell shall be  $(12 / f[\text{GHz}])$  mm or less but not more than 4 mm, and the spacing between father points shall increase by an incremental factor not exceeding 1.5. When variable spacing is used, extrapolation routines shall be tested with the same spacing as used in measurements. The maximum distance between the geometrical centre of the probe detectors and the inner surface of the phantom shall be 5 mm for frequencies below 3 GHz and  $\delta \ln(2)/2$  mm for frequencies of 3 GHz and greater, where  $\delta$  is the plane wave skin depth and  $\ln(x)$  is the natural logarithm. Separate grids shall be centered on each of the local SAR maxima found in step c). Uncertainties due to field distortion between the media boundary and the dielectric enclosure of the probe should also be minimized, which is achieved is the distance between the phantom surface and physical tip of the probe is larger than probe tip diameter. Other methods may utilize correction procedures for these boundary effects that enable high precision measurements closer than half the probe diameter. For all measurement points, the angle of the probe with respect to the flat phantom surface shall be less than  $5^\circ$ . If this cannot be achieved an additional uncertainty evaluation is needed.
- f) Use post processing( e.g. interpolation and extrapolation ) procedures to determine the local SAR values at the spatial resolution needed for mass averaging.

### Measurement procedure

The following procedure shall be performed for each of the test conditions (see Picture 11) described in 11.1:

- g) Measure the local SAR at a test point within 8 mm or less in the normal direction from the inner surface of the phantom.
- h) Measure the two-dimensional SAR distribution within the phantom (area scan procedure). The boundary of the measurement area shall not be closer than 20 mm from the phantom side walls. The distance between the measurement points should enable the detection of the location of local maximum with an accuracy of better than half the linear dimension of the tissue cube after interpolation. A maximum grip spacing of 20 mm for frequencies below 3 GHz and  $(60/f \text{ [GHz]})$  mm for frequencies of 3GHz and greater is recommended. The maximum distance between the geometrical centre of the probe detectors and the inner surface of the phantom shall be 5 mm for frequencies below 3 GHz and  $\delta \ln(2)/2$  mm for frequencies of 3 GHz and greater, where  $\delta$  is the plane wave skin depth and  $\ln(x)$  is the natural logarithm. The maximum variation of the sensor-phantom surface shall be  $\pm 1$  mm for frequencies below 3 GHz and  $\pm 0.5$  mm for frequencies of 3 GHz and greater. At all measurement points the angle of the probe with respect to the line normal to the surface should be less than  $5^\circ$ . If this cannot be achieved for a measurement distance to the phantom inner surface shorter than the probe diameter, additional measurement distance to the phantom inner surface shorter than the probe diameter, additional
- i) From the scanned SAR distribution, identify the position of the maximum SAR value, in addition identify the positions of any local maxima with SAR values within 2 dB of the maximum value that are not within the zoom-scan volume; additional peaks shall be measured only when the primary peak is within 2 dB of the SAR limit. This is consistent with the 2 dB threshold already stated;
- j) Measure the three-dimensional SAR distribution at the local maxima locations identified in step
- k) The horizontal grid step shall be  $(24 / f[\text{GHz}])$  mm or less but not more than 8 mm. The minimum zoom size of 30 mm by 30 mm and 30 mm for frequencies below 3 GHz. For higher frequencies, the minimum zoom size of 22 mm by 22 mm and 22 mm. The grip step in the vertical direction shall be  $(8-f[\text{GHz}])$  mm or less but not more than 5 mm, if uniform spacing is used. If variable spacing is used in the vertical direction, the maximum spacing between the two closest measured points to the phantom shell shall be  $(12 / f[\text{GHz}])$  mm or less but not more than 4 mm, and the spacing between father points shall increase by an incremental factor not exceeding 1.5. When variable spacing is used, extrapolation routines shall be tested with the same spacing as used in measurements. The maximum distance between the geometrical

centre of the probe detectors and the inner surface of the phantom shall be 5 mm for frequencies below 3 GHz and  $\delta \ln(2)/2$  mm for frequencies of 3 GHz and greater, where  $\delta$  is the plane wave skin depth and  $\ln(x)$  is the natural logarithm. Separate grids shall be centered on each of the local SAR maxima found in step c). Uncertainties due to field distortion between the media boundary and the dielectric enclosure of the probe should also be minimized, which is achieved is the distance between the phantom surface and physical tip of the probe is larger than probe tip diameter. Other methods may utilize correction procedures for these boundary effects that enable high precision measurements closer than half the probe diameter. For all measurement points, the angle of the probe with respect to the flat phantom surface shall be less than 5°. If this cannot be achieved an additional uncertainty evaluation is needed.

- l) Use post processing( e.g. interpolation and extrapolation ) procedures to determine the local SAR values at the spatial resolution needed for mass averaging.

## 4.11. Operational Conditions during Test

### 4.11.1. General Description of Test Procedures

The sample enter into 100% duty cycle continuous transmit controlled by software RT5572 QA tools V1[1].0.4.8 provided by application.

Verify that the power of antenna 0 and antenna 1 were not change for WLAN MIMO disable and Open mode

## 4.12. Position of the wireless device in relation to the phantom

### 4.12.1 Body Configuration

The sample is external and rotate antenna, according to KDB inquire tracking number: 187639, FCC provided measurement guide: "Because of the unique shape and characteristics of this USB dongle, the normal SAR test procedures detailed in KDB 447498 D02 will need to be amended in this instance. Typical use of this dongle inserted in a USB laptop port would entail the two antennas at roughly 90 degrees as shown in your included photo. Two SAR yesy positions for this device are appropriate with this typical use:

- 1] 5 mm separation from the flat phantom for the bottom of the dongle;
  - 2] 10 mm separation from the flat phantom fro the end of the dongle (opposite from the USB connector)
- Consider KDB 447498 D02 and KDB inquire tracking number: 187639, we summary 3 positions need measured as:

- Test Position 1: 5 mm separation from the flat phantom for the bottom of the dongle at Horizontal-Up;
- Test Position 2: 5 mm separation from the flat phantom for the bottom of the dongle at Horizontal-Down;;
- Test Position 3: 10 mm separation from the flat phantom fro the end of the dongle (opposite from the USB connector);

## 4.13. Test Configuration

### 4.13.1. WLAN Test Configuration

For WiFi SAR testing, WiFi engineering testing software installed on the DUT can provide continuous transmitting RF signal. This RF signal utilized in SAR measurement has almost 100% duty cycle and its crest factor is 1.

The SAR measurement and test reduction procedures are structured according to either the DSSS or OFDM transmission mode configurations used in each standalone frequency band and aggregated band. For devices that operate in exposure configurations that require multiple test positions, additional SAR test reduction may be applied. The maximum output power specified for production units, including tune-up tolerance, are used to determine initial SAR test requirements for the 802.11 transmission modes in a frequency band. SAR is measured using the highest measured maximum output power channel for the initial test configuration. SAR measurement and test reduction for the remaining 802.11 modes and test channels are determined according to measured or specified maximum output power and reported SAR of the initial measurements. The general test reduction and SAR measurement approaches are summarized in the following:

1. The maximum output power specified for production units are determined for all applicable 802.11 transmission modes in each standalone and aggregated frequency band. Maximum output power is measured for the highest maximum output power configuration(s) in each frequency band according to the default power measurement procedures.

2. For OFDM transmission configurations in the 2.4 GHz and 5 GHz bands, an “initial test configuration” is first determined for each standalone and aggregated frequency band according to the maximum output power and tune-up tolerance specified for production units.
  - a. When the same maximum power is specified for multiple transmission modes in a frequency band, the largest channel bandwidth, lowest order modulation, lowest data rate and lowest order 802.11a/g/n/ac mode is used for SAR measurement, on the highest measured output power channel in the initial test configuration, for each frequency band.
  - b. SAR is measured for OFDM configurations using the initial test configuration procedures. Additional frequency band specific SAR test reduction may be considered for individual frequency bands
  - c. Depending on the reported SAR of the highest maximum output power channel tested in the initial test configuration, SAR test reduction may apply to subsequent highest output channels in the initial test configuration to reduce the number of SAR measurements.
3. The Initial test configuration does not apply to DSSS. The 2.4 GHz band SAR test requirements and 802.11b DSSS procedures are used to establish the transmission configurations required for SAR measurement.
4. An “initial test position” is applied to further reduce the number of SAR tests for devices operating in next to the ear, UMPC mini-tablet mode exposure configurations that require multiple test positions .
  - a. SAR is measured for 802.11b according to the 2.4 GHz DSSS procedure using the exposure condition established by the initial test position.
  - b. SAR is measured for 2.4 GHz and 5 GHz OFDM configurations using the initial test configuration. 802.11b/g/n operating modes are tested independently according to the service requirements in each frequency band. 802.11b/g/n modes are tested on the maximum average output channel.
5. The Initial test position does not apply to devices that require a fixed exposure test position. SAR is measured in a fixed exposure test position for these devices in 802.11b according to the 2.4 GHz DSSS procedure or in 2.4 GHz and 5 GHz OFDM configurations using the initial test configuration procedures .
6. The “subsequent test configuration” procedures are applied to determine if additional SAR measurements are required for the remaining OFDM transmission modes that have not been tested in the initial test configuration. SAR test exclusion is determined according to reported SAR in the initial test configuration and maximum output power specified or measured for these other OFDM configurations.

#### SAR Procedures

Separate SAR procedures are applied to DSSS and OFDM configurations in the 2.4 GHz band to simplify DSSS test requirements. For 802.11b DSSS SAR measurements, DSSS SAR procedure applies to fixed exposure test position and initial test position procedure applies to multiple exposure test positions. When SAR measurement is required for an OFDM configuration, the initial test configuration, subsequent test configuration and initial test position procedures are applied. The SAR test exclusion requirements for 802.11g/n OFDM configurations are described in section 5.2.2.

##### 1. 802.11b DSSS SAR Test Requirements

SAR is measured for 2.4 GHz 802.11b DSSS using either a fixed test position or, when applicable, the initial test position procedure. SAR test reduction is determined according to the following:

- a. When the reported SAR of the highest measured maximum output power channel (section 3.1) for the exposure configuration is  $\leq 0.8$  W/kg, no further SAR testing is required for 802.11b DSSS in that exposure configuration.
- b. When the reported SAR is  $> 0.8$  W/kg, SAR is required for that exposure configuration using the next highest measured output power channel. When any reported SAR is  $> 1.2$  W/kg, SAR is required for the third channel; i.e., all channels require testing.

##### 1. 2.4 GHz 802.11g/n OFDM SAR Test Exclusion Requirements

When SAR measurement is required for 2.4 GHz 802.11g/n OFDM configurations, the measurement and test reduction procedures for OFDM are applied (section 5.3). SAR is not required for the following 2.4 GHz OFDM conditions.

- a. When KDB Publication 447498 SAR test exclusion applies to the OFDM configuration
- b. When the highest reported SAR for DSSS is adjusted by the ratio of OFDM to DSSS specified maximum output power and the adjusted SAR is  $\leq 1.2$  W/kg.

##### 2. SAR Test Requirements for OFDM Configurations

When SAR measurement is required for 802.11 a/g/n/ac OFDM configurations, each standalone and frequency aggregated band is considered separately for SAR test reduction. When the same transmitter and antenna(s) are used for U-NII-1 and U-NII-2A bands, additional SAR test reduction applies. When band gap channels between U-NII-2C band and 5.8 GHz U-NII-3 or §15.247 band are supported, the highest maximum output power transmission mode configuration and maximum output power channel across the bands must be used to determine SAR test reduction, according to the initial test configuration and subsequent test configuration requirements.<sup>20</sup> In applying the initial test configuration and subsequent test configuration procedures, the 802.11 transmission configuration with the highest specified maximum output power and the channel within a test configuration with the highest measured maximum output power should be clearly distinguished to apply the procedures.

##### 3. OFDM Transmission Mode SAR Test Configuration and Channel Selection Requirements

The initial test configuration for 2.4 GHz and 5 GHz OFDM transmission modes is determined by the 802.11 configuration with the highest maximum output power specified for production units, including tune-up tolerance, in each standalone and aggregated frequency band. SAR for the initial test configuration is measured using the highest maximum output power channel determined by the default power measurement procedures (section 4). When multiple configurations in a frequency band have the same specified maximum output power, the initial test configuration is determined according to the following steps applied sequentially.

- a. The largest channel bandwidth configuration is selected among the multiple configurations with the same specified maximum output power.
- b. If multiple configurations have the same specified maximum output power and largest channel bandwidth, the lowest order modulation among the largest channel bandwidth configurations is selected.
- c. If multiple configurations have the same specified maximum output power, largest channel bandwidth and lowest order modulation, the lowest data rate configuration among these configurations is selected.
- d. When multiple transmission modes (802.11a/g/n/ac) have the same specified maximum output power, largest channel bandwidth, lowest order modulation and lowest data rate, the lowest order 802.11 mode is selected; i.e., 802.11a is chosen over 802.11n then 802.11ac or 802.11g is chosen over 802.11n. After an initial test configuration is determined, if multiple test channels have the same measured maximum output power, the channel chosen for SAR measurement is determined according to the following. These channel selection procedures apply to both the initial test configuration and subsequent test configuration(s), with respect to the default power measurement procedures or additional power measurements required for further SAR test reduction. The same procedures also apply to subsequent highest output power channel(s) selection.
  - a. When there are multiple test channels with the same measured maximum output power, the channel closest to mid-band frequency is selected for SAR measurement.
  - b. When there are multiple test channels with the same measured maximum output power and equal separation from mid-band frequency; for example, high and low channels or two mid-band channels, the higher frequency (number) channel is selected for SAR measurement.

#### Initial Test Configuration Procedures

An initial test configuration is determined for OFDM transmission modes according to the channel bandwidth, modulation and data rate combination(s) with the highest maximum output power specified for production units in each standalone and aggregated frequency band. SAR is measured using the highest measured maximum output power channel. For configurations with the same specified or measured maximum output power, additional transmission mode and test channel selection procedures are required (see section 5.3.2). SAR test reduction of subsequent highest output test channels is based on the reported SAR of the initial test configuration.

For next to the ear and UMC mini-tablet exposure configurations where multiple test positions are required, the initial test position procedure is applied to minimize the number of test positions required for SAR measurement using the initial test configuration transmission mode.<sup>23</sup> For fixed exposure conditions that do not have multiple SAR test positions, SAR is measured in the transmission mode determined by the initial test configuration. When the reported SAR of the initial test configuration is  $> 0.8$  W/kg, SAR measurement is required for the subsequent next highest measured output power channel(s) in the initial test configuration until the reported SAR is  $\leq 1.2$  W/kg or all required channels are tested.

#### 4. Subsequent Test Configuration Procedures

SAR measurement requirements for the remaining 802.11 transmission mode configurations that have not been tested in the initial test configuration are determined separately for each standalone and aggregated frequency band, in each exposure condition, according to the maximum output power specified for production units. The initial test position procedure is applied to next to the ear, UMPC mini-tablet mode configurations. When the same maximum output power is specified for multiple transmission modes, the procedures in section 5.3.2 are applied to determine the test configuration. Additional power measurements may be required to determine if SAR measurements are required for subsequent highest output power channels in a subsequent test configuration. The subsequent test configuration and SAR measurement procedures are described in the following.

- a. When SAR test exclusion provisions of KDB Publication 447498 are applicable and SAR measurement is not required for the initial test configuration, SAR is also not required for the next highest maximum output power transmission mode subsequent test configuration(s) in that frequency band or aggregated band and exposure configuration.
- b. When the highest reported SAR for the initial test configuration (when applicable, include subsequent highest output channels), according to the initial test position or fixed exposure position requirements, is adjusted by the ratio of the subsequent test configuration to initial test configuration specified maximum output power and the adjusted SAR is  $\leq 1.2$  W/kg, SAR is not required for that subsequent test configuration.
- c. The number of channels in the initial test configuration and subsequent test configuration can be different due to differences in channel bandwidth. When SAR measurement is required for a subsequent test configuration and the channel bandwidth is smaller than that in the initial test configuration, all channels in the subsequent test configuration that overlap with the larger bandwidth channel tested in the initial test

configuration should be used to determine the highest maximum output power channel. This step requires additional power measurement to identify the highest maximum output power channel in the subsequent test configuration to determine SAR test reduction.

- 1). SAR should first be measured for the channel with highest measured output power in the subsequent test configuration.
  - 2). SAR for subsequent highest measured maximum output power channels in the subsequent test configuration is required only when the reported SAR of the preceding higher maximum output power channel(s) in the subsequent test configuration is  $> 1.2$  W/kg or until all required channels are tested.
    - a) For channels with the same measured maximum output power, SAR should be measured using the channel closest to the center frequency of the larger channel bandwidth channel in the initial test configuration.
- D. SAR measurements for the remaining highest specified maximum output power OFDM transmission mode configurations that have not been tested in the initial test configuration (highest maximum output) or subsequent test configuration(s) (subsequent next highest maximum output power) is determined by applying the subsequent test configuration procedures in this section to the remaining configurations according to the following:
- 1) replace "subsequent test configuration" with "next subsequent test configuration" (i.e., subsequent next highest specified maximum output power configuration)
  - 2) replace "initial test configuration" with "all tested higher output power configurations."

#### 4.13.2. MIMO Test Configuration

The sample was 2T2R MIMO device, need test each antenna individually using these two SAR test position and then follow the simultaneous transmission evaluation procedures in KDB 648474 to sum the individual SAR values and/or use peak location separation ratios to determine if simultaneous transmission exclusion applies according to KDB 447498 D01 and KDB inquire tracking number: 187639.

#### 4.14. Power Drift

To control the output power stability during the SAR test, DASY5 system calculates the power drift by measuring the E-field at the same location at the beginning and at the end of the measurement for each test position. These drift values can be found in Table 14.1 to Table 14.11 labeled as: (Power Drift [dB]). This ensures that the power drift during one measurement is within 5%.



## 5. TEST CONDITIONS AND RESULTS

### 5.1. Conducted Power Results

Accordinging KDB 447498 D01 General RF Exposure Guidance v06 Section 4.1 2) states that “Unless it is specified differently in the published RF exposure KDB procedures, these requirements also apply to test reduction and test exclusion considerations. Time-averaged maximum conducted output power applies to SAR and, as required by § 2.1091(c), time-averaged ERP applies to MPE. When an antenna port is not available on the device to support conducted power measurement, such as FRS and certain Part 15 transmitters with built-in integral antennas, the maximum output power allowed for production units should be used to determine RF exposure test exclusion and compliance.”

#### <WLAN 2.4GHz Conducted Power>

##### <Antenna 0>

Mode	Channel	Frequency (MHz)	Data rate (Mbps)	Average Output Power (dBm)
IEEE 802.11b	1	2412	1	11.74
			2	11.71
			5.5	11.65
			11	11.52
	6	2437	1	11.70
			2	11.63
			5.5	11.58
			11	11.50
	11	2462	1	<b>11.77</b>
			2	11.72
			5.5	11.65
			11	11.55
IEEE 802.11g	1	2412	6	9.85
			9	9.82
			12	9.79
			18	9.78
			24	9.72
			36	9.70
			48	9.64
			54	9.62
	6	2437	6	9.90
			9	9.88
			12	9.83
			18	9.81
			24	9.77
			36	9.76
			48	9.72
			54	9.68
	11	2462	6	9.95
			9	9.91
			12	9.90
			18	9.86
			24	9.83
			36	9.82
			48	9.77
			54	9.73
IEEE 802.11n HT20	1	2412	MCS0	9.71
			MCS1	9.70
			MCS2	9.64
			MCS3	9.62
			MCS4	9.61
			MCS5	9.57
			MCS6	9.54
	MCS7	9.53		
	6	2437	MCS0	9.88

			MCS1	9.87
			MCS2	9.85
			MCS3	9.81
			MCS4	9.79
			MCS5	9.78
			MCS6	9.75
			MCS7	9.72
	11	2462	MCS0	9.92
			MCS1	9.90
			MCS2	9.87
			MCS3	9.85
			MCS4	9.82
			MCS5	9.81
			MCS6	9.77
IEEE 802.11n HT40	3	2422	MCS0	8.19
			MCS1	8.18
			MCS2	8.14
			MCS3	8.12
			MCS4	8.08
			MCS5	8.06
			MCS6	8.05
	6	2437	MCS0	8.22
			MCS1	8.20
			MCS2	8.16
			MCS3	8.15
			MCS4	8.12
			MCS5	8.11
			MCS6	8.08
	9	2452	MCS0	8.25
			MCS1	8.24
			MCS2	8.21
			MCS3	8.17
			MCS4	8.15
			MCS5	8.12
			MCS6	8.11
	MCS7	8.09		

<Antenna 1>

Mode	Channel	Frequency (MHz)	Data rate (Mbps)	Average Output Power (dBm)
IEEE 802.11b	1	2412	1	<b>12.66</b>
			2	12.62
			5.5	12.57
			11	12.51
	6	2437	1	12.25
			2	12.22
			5.5	12.17
			11	12.12
	11	2462	1	11.96
			2	11.92
			5.5	11.85
			11	11.80
IEEE 802.11g	1	2412	6	10.24
			9	10.21
			12	10.16
			18	10.14
			24	10.12
			36	10.11
			48	10.08

	6	2437	54	10.07
			6	10.21
			9	10.20
			12	10.15
			18	10.12
			24	10.09
			36	10.04
			48	10.03
			54	10.00
	11	2462	6	9.98
			9	9.95
			12	9.93
			18	9.89
			24	9.85
			36	9.80
			48	9.75
			54	9.73
IEEE 802.11n HT20	1	2412	MCS0	10.43
			MCS1	10.41
			MCS2	10.38
			MCS3	10.37
			MCS4	10.32
			MCS5	10.30
			MCS6	10.25
	MCS7	10.22		
	6	2437	MCS0	10.40
			MCS1	10.38
			MCS2	10.35
			MCS3	10.31
			MCS4	10.29
			MCS5	10.28
			MCS6	10.24
	MCS7	10.21		
	11	2462	MCS0	9.95
			MCS1	9.93
			MCS2	9.92
			MCS3	9.88
			MCS4	9.84
MCS5			9.82	
MCS6			9.79	
MCS7	9.74			
IEEE 802.11n HT40	3	2422	MCS0	8.28
			MCS1	8.25
			MCS2	8.24
			MCS3	8.21
			MCS4	8.20
			MCS5	8.18
			MCS6	8.14
	MCS7	8.12		
	6	2437	MCS0	8.26
			MCS1	8.25
			MCS2	8.22
			MCS3	8.20
			MCS4	8.18
			MCS5	8.17
			MCS6	8.15
	MCS7	8.15		
	9	2452	MCS0	8.25
			MCS1	8.25
			MCS2	8.22
			MCS3	8.17
			MCS4	8.16

			MCS5	8.14
			MCS6	8.12
			MCS7	8.10

## &lt;WLAN 5GHz Conducted Power&gt;

## &lt;Antenna 0&gt;

Mode	Channel	Frequency (MHz)	Average Output Power (dBm)							
			Data rate (Mbps)							
			MCS0	MCS1	MCS2	MCS3	MCS4	MCS5	MCS6	MCS7
IEEE 802.11a	36	5180	15.95	15.93	15.90	15.88	15.85	15.81	15.74	15.73
	40	5200	15.91	19.90	15.88	15.85	15.82	15.80	15.72	15.70
	44	5220	15.75	15.72	15.71	15.66	15.63	15.61	15.57	15.52
	48	5240	15.56	15.54	15.52	15.50	15.47	15.46	15.41	15.40
	149	5745	14.62	14.61	14.58	14.54	14.52	14.48	14.42	14.40
	153	5765	14.40	14.37	14.35	14.31	14.26	14.23	14.20	14.14
	157	5785	13.89	13.88	13.85	13.81	13.76	13.72	13.69	13.62
	161	5805	13.65	13.61	13.57	13.55	13.50	13.48	13.43	13.41
	165	5825	13.29	13.24	13.22	13.19	13.15	13.13	13.10	13.08
IEEE 802.11n HT20	36	5180	15.12	15.10	15.07	15.04	15.00	14.94	14.92	14.88
	40	5200	15.05	15.00	14.99	14.95	14.93	14.90	14.87	14.82
	44	5220	14.31	14.29	14.22	14.21	14.18	14.16	14.12	14.11
	48	5240	15.11	15.08	15.06	15.02	15.00	14.97	14.95	14.92
	149	5745	14.25	14.22	14.20	14.16	14.13	14.11	14.08	14.02
	153	5765	14.11	14.08	14.03	14.03	14.00	13.95	13.91	13.90
	157	5785	13.81	13.77	13.73	13.71	13.65	13.62	13.58	13.52
	161	5805	13.89	13.86	13.82	13.77	13.75	13.72	13.69	13.69
	165	5825	14.18	14.17	14.13	14.10	14.06	14.03	14.03	14.02
IEEE 802.11n HT40	38	5190	14.49	14.43	14.42	14.38	14.34	14.32	14.29	14.25
	46	5230	14.35	14.32	14.30	14.26	14.25	14.23	14.20	14.18
	151	5755	14.85	14.82	14.81	14.77	14.73	14.73	14.71	14.70
	159	5795	14.59	14.55	14.52	14.52	14.49	14.41	14.40	14.40

## &lt;Antenna 1&gt;

Mode	Channel	Frequency (MHz)	Average Output Power (dBm)							
			Data rate (Mbps)							
			MCS0	MCS1	MCS2	MCS3	MCS4	MCS5	MCS6	MCS7
IEEE 802.11a	36	5180	15.28	15.26	15.21	15.18	15.18	15.14	15.12	15.11
	40	5200	15.16	15.15	15.13	15.09	15.07	15.07	15.03	15.00
	44	5220	15.03	15.01	14.97	14.96	14.92	14.90	14.87	14.83
	48	5240	14.32	14.31	14.29	14.24	14.24	14.20	14.15	14.12
	149	5745	14.33	14.31	14.27	14.23	14.20	14.16	14.15	14.11
	153	5765	14.12	14.09	14.06	14.06	14.03	14.00	13.98	13.97
	157	5785	13.43	13.41	13.38	13.34	13.33	13.30	13.28	13.24
	161	5805	13.94	13.91	13.87	13.86	13.82	13.80	13.76	13.75
		165	5825	14.76	14.75	14.72	14.70	14.65	14.63	14.61
IEEE 802.11n HT20	36	5180	14.77	14.72	14.70	14.70	14.37	14.33	14.31	14.26
	40	5200	14.49	14.44	14.41	14.40	14.35	14.32	14.30	14.26
	44	5220	14.84	14.81	14.80	14.76	14.72	14.71	14.68	14.63
	48	5240	14.59	14.55	14.52	14.50	14.46	14.43	14.41	14.35
	149	5745	14.36	14.36	14.32	14.27	14.22	14.21	14.18	14.13
	153	5765	14.09	14.03	14.03	14.01	13.96	13.94	13.91	13.90
	157	5785	13.43	13.42	13.40	13.35	13.35	13.31	13.26	13.26
	161	5805	13.78	13.75	13.72	13.67	13.67	13.62	13.61	13.61
		165	5825	14.62	14.60	14.57	14.53	14.53	14.51	14.49
IEEE 802.11n HT40	38	5190	15.35	15.31	15.30	15.29	15.24	15.24	15.22	15.20
	46	5230	13.87	13.82	13.81	13.78	13.72	13.72	13.70	13.65
	151	5755	14.52	14.50	14.47	14.47	14.43	14.40	14.35	14.35
	159	5795	14.82	14.80	14.74	14.74	14.71	14.67	14.63	14.61

## &lt;WLAN 2.4GHz Conducted Power&gt;

## &lt;Combiner Antenna 0 and Antenna 1&gt;

Mode	Channel	Frequency (MHz)	Data rate (Mbps)	Average Output Power (dBm)
IEEE 802.11n HT20	1	2412	MCS0	13.10
			MCS1	13.08
			MCS2	13.04
			MCS3	13.02
			MCS4	12.99
			MCS5	12.96
			MCS6	12.92
	6	2437	MCS7	12.90
			MCS0	13.16
			MCS1	13.14
			MCS2	13.12
			MCS3	13.08
			MCS4	13.06
			MCS5	13.05
	11	2462	MCS6	13.01
			MCS7	12.98
			MCS0	12.95
			MCS1	12.93
			MCS2	12.91
			MCS3	12.88
			MCS4	12.84
IEEE 802.11n HT40	3	2422	MCS5	12.83
			MCS6	12.79
			MCS7	12.75
			MCS0	11.25
			MCS1	11.23
			MCS2	11.20
			MCS3	11.18
	6	2437	MCS4	11.15
			MCS5	11.13
			MCS6	11.11
			MCS7	11.08
			MCS0	11.25
			MCS1	11.24
			MCS2	11.20
	9	2452	MCS3	11.19
			MCS4	11.16
			MCS5	11.15
			MCS6	11.13
			MCS7	11.12
			MCS0	11.26
			MCS1	11.26
MCS2	11.23			
MCS3	11.18			
MCS4	11.17			
MCS5	11.14			
MCS6	11.13			
MCS7	11.11			



IEEE 802.11n HT20 (Average)								
Frequency (MHz)	5180		5200		5220		5240	
	Antenna 0	Antenna 1	Antenna 0	Antenna 1	Antenna 0	Antenna 1	Antenna 0	Antenna 1
Target (dBm)	15.0	14.0	15.0	14.0	15.0	14.0	15.0	14.0
Tolerance $\pm$ (dB)	1.0	1.0	1.0	1.0	1.0	1.0	1.0	1.0

IEEE 802.11n HT40 (Average)				
Frequency (MHz)	5190		5230	
	Antenna 0	Antenna 1	Antenna 0	Antenna 1
Target (dBm)	14.0	15.0	14.0	13.0
Tolerance $\pm$ (dB)	1.0	1.0	1.0	1.0

## &lt;5GHzWLAN Band 3&gt;

IEEE 802.11a (Average)										
Frequency (MHz)	5745		5765		5785		5805		5825	
	Antenna 0	Antenna 1	Antenna 0	Antenna 1	Antenna 0	Antenna 1	Antenna 0	Antenna 1	Antenna 0	Antenna 1
Target (dBm)	14.0	14.0	14.0	14.0	14.0	14.0	14.0	14.0	14.0	14.0
Tolerance $\pm$ (dB)	1.0	1.0	1.0	1.0	1.0	1.0	1.0	1.0	1.0	1.0

IEEE 802.11n HT20 (Average)										
Frequency (MHz)	5745		5765		5785		5805		5825	
	Antenna 0	Antenna 1	Antenna 0	Antenna 1	Antenna 0	Antenna 1	Antenna 0	Antenna 1	Antenna 0	Antenna 1
Target (dBm)	14.0	14.0	14.0	14.0	14.0	14.0	14.0	14.0	14.0	14.0
Tolerance $\pm$ (dB)	1.0	1.0	1.0	1.0	1.0	1.0	1.0	1.0	1.0	1.0

IEEE 802.11n HT40 (Average)				
Frequency (MHz)	5755		5795	
	Antenna 0	Antenna 1	Antenna 0	Antenna 1
Target (dBm)	14.0	14.0	14.0	14.0
Tolerance $\pm$ (dB)	1.0	1.0	1.0	1.0

### 5.3. Transmit Antennas Position



### 5.4. Standalone SAR Test Exclusion Considerations

Per KDB447498 for standalone 1-g head or body SAR evaluation by measurement or numerical simulation is not required when the corresponding SAR Exclusion Threshold condition, listed below, is satisfied. The 1-g and 10-g SAR test exclusion thresholds for 100 MHz to 6 GHz at test separation distances  $\leq 50$  mm are determined by:

$$\left[ \frac{\text{(max. power of channel, including tune-up tolerance, mW)}}{\text{(min. test separation distance, mm)}} \right] \cdot \sqrt{f(\text{GHz})} \leq 3.0$$
 for 1-g SAR and  $\leq 7.5$  for 10-g extremity SAR, where

- $f(\text{GHz})$  is the RF channel transmit frequency in GHz
- Power and distance are rounded to the nearest mW and mm before calculation
- The result is rounded to one decimal place for comparison
- 3.0 and 7.5 are referred to as the numeric thresholds in the step 2 below

Per KDB 248227 D01 802.11 Wi-Fi SAR v02 for the simultaneous transmission conditions for MIMO, TxBF and other similar configurations must be considered separately for each standalone and aggregated frequency band according to the 802.11 transmission mode configurations and exposure conditions to determine SAR compliance. The aggregate maximum output power of all simultaneous transmitting antennas in all transmission chains may be used to determine SAR test exclusion for each frequency band and transmission mode configuration. The most conservative SAR test separation distance among the antennas must be used to apply the standalone SAR test exclusion provisions in KDB Publication 447498 D01.25 When this power-based standalone SAR test exclusion does not apply, the sum of 1-g SAR provision in KDB Publication 447498 D01 should be used to determine simultaneous transmission SAR test exclusion.



<Antenna 0>

Standalone SAR test exclusion considerations							
Modulation	Frequency (MHz)	Configuration	Maximum Average Power (dBm)	Separation Distance (mm)	Calculation Result	SAR Exclusion Thresholds	Standalone SAR Exclusion
IEEE 802.11a	5200	Test Position 1	16.00	5	18.2	3.0	no
		Test Position 1	16.00	5	18.2	3.0	no
		Test Position 2	16.00	10	9.1	3.0	no
IEEE 802.11a	5800	Test Position 1	15.00	5	15.2	3.0	no
		Test Position 1	15.00	5	15.2	3.0	no
		Test Position 2	15.00	10	7.6	3.0	no
IEEE 802.11b	2450	Test Position 1	12.00	5	4.9	3.0	no
		Test Position 1	12.00	5	4.9	3.0	no
		Test Position 2	12.00	10	2.5	3.0	yes
IEEE 802.11g	2450	Test Position 1	10.00	5	3.1	3.0	no
		Test Position 1	10.00	5	3.1	3.0	no
		Test Position 2	10.00	10	1.6	3.0	yes
IEEE 802.11n HT20	2450	Test Position 1	10.00	5	3.1	3.0	no
		Test Position 1	10.00	5	3.1	3.0	no
		Test Position 2	10.00	10	1.6	3.0	yes
IEEE 802.11n HT20	5200	Test Position 1	16.00	5	18.2	3.0	no
		Test Position 1	16.00	5	18.2	3.0	no
		Test Position 2	16.00	10	9.1	3.0	no
IEEE 802.11n HT20	5800	Test Position 1	15.00	5	15.2	3.0	no
		Test Position 1	15.00	5	15.2	3.0	no
		Test Position 2	15.00	10	7.6	3.0	no
IEEE 802.11n HT40	2450	Test Position 1	9.00	5	2.5	3.0	yes
		Test Position 1	9.00	5	2.5	3.0	yes
		Test Position 2	9.00	10	1.3	3.0	yes
IEEE 802.11n HT40	5200	Test Position 1	15.00	5	14.4	3.0	no
		Test Position 1	15.00	5	14.4	3.0	no
		Test Position 2	15.00	10	7.2	3.0	no
IEEE 802.11n HT40	5800	Test Position 1	15.00	5	15.2	3.0	no
		Test Position 1	15.00	5	15.2	3.0	no
		Test Position 2	15.00	10	7.6	3.0	no

<Antenna 1>

Standalone SAR test exclusion considerations							
Modulation	Frequency (MHz)	Configuration	Maximum Average Power (dBm)	Separation Distance (mm)	Calculation Result	SAR Exclusion Thresholds	Standalone SAR Exclusion
IEEE 802.11a	5200	Test Position 1	16.00	5	18.2	3.0	no
		Test Position 1	16.00	5	18.2	3.0	no
		Test Position 2	16.00	10	9.1	3.0	no
IEEE 802.11a	5800	Test Position 1	15.00	5	15.2	3.0	no
		Test Position 1	15.00	5	15.2	3.0	no
		Test Position 2	15.00	10	7.6	3.0	no
IEEE 802.11b	2450	Test Position 1	13.00	5	6.2	3.0	no
		Test Position 1	13.00	5	6.2	3.0	no
		Test Position 2	13.00	10	3.1	3.0	no
IEEE 802.11g	2450	Test Position 1	11.00	5	3.9	3.0	no
		Test Position 1	11.00	5	3.9	3.0	no
		Test Position 2	11.00	10	2.0	3.0	yes
IEEE 802.11n HT20	2450	Test Position 1	11.00	5	3.9	3.0	no
		Test Position 1	11.00	5	3.9	3.0	no
		Test Position 2	11.00	10	2.0	3.0	yes
IEEE 802.11n HT20	5200	Test Position 1	15.00	5	14.4	3.0	no
		Test Position 1	15.00	5	14.4	3.0	no
		Test Position 2	15.00	10	7.2	3.0	no

EEE 802.11n HT20	5800	Test Position 1	15.00	5	14.4	3.0	no
		Test Position 1	15.00	5	14.4	3.0	no
		Test Position 2	15.00	10	7.2	3.0	no
IEEE 802.11n HT40	2450	Test Position 1	9.00	5	2.5	3.0	yes
		Test Position 1	9.00	5	2.5	3.0	yes
		Test Position 2	9.00	10	1.3	3.0	yes
IEEE 802.11n HT40	5200	Test Position 1	16.00	5	18.2	3.0	no
		Test Position 1	16.00	5	18.2	3.0	no
		Test Position 2	16.00	10	9.1	3.0	no
IEEE 802.11n HT40	5800	Test Position 1	15.00	5	15.2	3.0	no
		Test Position 1	15.00	5	15.2	3.0	no
		Test Position 2	15.00	10	7.6	3.0	no

Remark:

1. Maximum average power including tune-up tolerance;

#### <Combiner Antenna 0 and Antenna 1>

Standalone SAR test exclusion considerations							
Modulation	Frequency (MHz)	Configuration	Maximum Average Power (dBm)	Separation Distance (mm)	Calculation Result	SAR Exclusion Thresholds	Standalone SAR Exclusion
IEEE 802.11n HT20	2450	Test Position 1	13.54	5	7.0	3.0	no
		Test Position 1	13.54	5	7.0	3.0	no
		Test Position 2	13.54	10	3.5	3.0	no
IEEE 802.11n HT20	5200	Test Position 1	18.54	5	32.6	3.0	no
		Test Position 1	18.54	5	32.6	3.0	no
		Test Position 2	18.54	10	16.3	3.0	no
EEE 802.11n HT20	5800	Test Position 1	18.01	5	29.6	3.0	no
		Test Position 1	18.01	5	29.6	3.0	no
		Test Position 2	18.01	10	14.8	3.0	no
IEEE 802.11n HT40	2450	Test Position 1	12.01	5	5.0	3.0	no
		Test Position 1	12.01	5	5.0	3.0	no
		Test Position 2	12.01	10	2.6	3.0	yes
IEEE 802.11n HT40	5200	Test Position 1	18.54	5	32.6	3.0	no
		Test Position 1	18.54	5	32.6	3.0	no
		Test Position 2	18.54	10	16.3	3.0	no
IEEE 802.11n HT40	5800	Test Position 1	18.01	5	30.4	3.0	no
		Test Position 1	18.01	5	30.4	3.0	no
		Test Position 2	18.01	10	15.2	3.0	no

Remark:

1. Maximum average power including tune-up tolerance for each antenna;
2. Combiner antenna power including antenna 0 and antenna 1 power turn up tolerance.

## 5.5. SAR Measurement Results

The calculated SAR is obtained by the following formula:

$$\text{Reported SAR} = \text{Measured SAR} * 10^{(P_{\text{target}} - P_{\text{measured}})/10}$$

$$\text{Scaling factor} = 10^{(P_{\text{target}} - P_{\text{measured}})/10}$$

$$\text{Reported SAR} = \text{Measured SAR} * \text{Scaling factor}$$

Where  $P_{\text{target}}$  is the power of manufacturing upper limit;

$P_{\text{measured}}$  is the measured power;

Measured SAR is measured SAR at measured power which including power drift)

Reported SAR which including Power Drift and Scaling factor

#### Duty Cycle

Test Mode	Duty Cycle
2.4GWLAN	1:1
5GWLAN	1:1

## 5.6. SAR Reporting Results

<Standalone SAR with Disable MIMO>

<Antenna 0>

**Table 7: SAR Values [2.4GWLAN IEEE 802.11b/g/n]**

Ch.	Freq. (MHz)	Service	Test Position	Maximum Allowed Power (dBm)	Conducted Power (dBm)	Power drift	Scaling Factor	SAR <sub>1-g</sub> results(W/Kg)		Graph Results
								Measured	Reported	
<b>measured / reported SAR numbers – Body</b>										
11	2462	DSSS	Test Position 1	12.00	11.77	0.11	1.054	<b>0.181</b>	<b>0.191</b>	1
11	2462	DSSS	Test Position 2	12.00	11.77	-0.09	1.054	0.124	0.131	
11	2462	DSSS	Test Position 3	12.00	11.77	-0.15	1.054	<b>0.222</b>	<b>0.234</b>	2

Remark:

1. The value with block color is the maximum SAR Value of each test band.
2. Per FCC KDB Publication 447498 D01, if the reported (scaled) SAR measured at the middle channel or highest output power channel for each test configuration is  $\leq 0.8$  W/kg then testing at the other channels is optional for such test configuration(s).
3. SAR is not required for the following 2.4 GHz OFDM conditions as the highest reported SAR for DSSS is adjusted by the ratio of OFDM to DSSS specified maximum output power and the adjusted SAR is  $\leq 1.2$  W/kg.

**Table 8: SAR Values [5GWLAN Band 1 IEEE 802.11a/n]**

Ch.	Freq. (MHz)	Service	Test Position	Maximum Allowed Power (dBm)	Conducted Power (dBm)	Power drift	Scaling Factor	SAR <sub>1-g</sub> results(W/Kg)		Graph Results
								Measured	Reported	
<b>measured / reported SAR numbers – Body</b>										
36	5180	OFDM	Test Position 1	16.00	15.95	-0.04	1.012	<b>0.054</b>	<b>0.055</b>	9
36	5180	OFDM	Test Position 2	16.00	15.95	-0.16	1.012	0.046	0.047	
36	5180	OFDM	Test Position 3	16.00	15.95	-0.11	1.012	<b>0.066</b>	<b>0.067</b>	10

Remark:

1. The value with blue color is the maximum SAR Value of each test band.
2. Per FCC KDB Publication 447498 D01, if the reported (scaled) SAR measured at the middle channel or highest output power channel for each test configuration is  $\leq 0.8$  W/kg then testing at the other channels is optional for such test configuration(s).
3. When different maximum output power is specified for the bands, begin SAR measurement in the band with higher specified maximum output power. The highest reported SAR for the tested configuration is adjusted by the ratio of lower to higher specified maximum output power for the two bands. When the adjusted SAR is  $\leq 1.2$  W/kg, SAR is not required for the band with lower maximum output power in that test configuration; otherwise, each band is tested independently for SAR.

**Table 9: SAR Values [5GWLAN Band 3 IEEE 802.11a/n]**

Ch.	Freq. (MHz)	Service	Test Position	Maximum Allowed Power (dBm)	Conducted Power (dBm)	Power drift	Scaling Factor	SAR <sub>1-g</sub> results(W/Kg)		Graph Results
								Measured	Reported	
<b>measured / reported SAR numbers – Body</b>										
151	5755	OFDM	Test Position 1	15.00	14.85	0.02	1.035	<b>0.026</b>	<b>0.027</b>	17
151	5755	OFDM	Test Position 2	15.00	14.85	0.14	1.035	0.014	0.014	
151	5755	OFDM	Test Position 3	15.00	14.85	0.05	1.035	<b>0.029</b>	<b>0.030</b>	18

Remark:

1. The value with blue color is the maximum SAR Value of each test band.
2. Per FCC KDB Publication 447498 D01, if the reported (scaled) SAR measured at the middle channel or highest output power channel for each test configuration is  $\leq 0.8$  W/kg then testing at the other channels is optional for such test configuration(s).
3. The initial test configuration for 2.4 GHz and 5 GHz OFDM transmission modes is determined by the 802.11 configuration with the highest maximum output power specified for production units, including tune-up tolerance, in each standalone and aggregated frequency band. SAR for the initial test configuration is measured using the highest maximum output power channel determined by the default power measurement procedures (see Clause 4).

## &lt;Antenna 1&gt;

Table 10: SAR Values [2.4GWLAN IEEE 802.11b/g/n]

Ch.	Freq. (MHz)	Service	Test Position	Maximum Allowed Power (dBm)	Conducted Power (dBm)	Power drift	Scaling Factor	SAR <sub>1-g</sub> results(W/Kg)		Graph Results
								Measured	Reported	
<b>measured / reported SAR numbers – Body</b>										
1	2412	DSSS	Test Position 1	13.00	12.66	-0.01	1.081	<b>0.228</b>	<b>0.246</b>	5
1	2412	DSSS	Test Position 2	13.00	12.66	-0.16	1.081	0.196	0.212	
1	2412	DSSS	Test Position 3	13.00	12.66	-0.11	1.081	<b>0.395</b>	<b>0.427</b>	6

## Remark:

1. The value with block color is the maximum SAR Value of each test band.
2. Per FCC KDB Publication 447498 D01, if the reported (scaled) SAR measured at the middle channel or highest output power channel for each test configuration is  $\leq 0.8$  W/kg then testing at the other channels is optional for such test configuration(s).
3. SAR is not required for the following 2.4 GHz OFDM conditions as the highest reported SAR for DSSS is adjusted by the ratio of OFDM to DSSS specified maximum output power and the adjusted SAR is  $\leq 1.2$  W/kg.

Table 11: SAR Values [5GWLAN Band 1 IEEE 802.11a/n]

Ch.	Freq. (MHz)	Service	Test Position	Maximum Allowed Power (dBm)	Conducted Power (dBm)	Power drift	Scaling Factor	SAR <sub>1-g</sub> results(W/Kg)		Graph Results
								Measured	Reported	
<b>measured / reported SAR numbers – Body</b>										
38	5190	OFDM	Test Position 1	16.00	15.35	0.11	1.161	<b>0.072</b>	<b>0.084</b>	13
38	5190	OFDM	Test Position 2	16.00	15.35	0.02	1.161	0.051	0.059	
38	5190	OFDM	Test Position 3	16.00	15.35	-0.13	1.161	<b>0.094</b>	<b>0.109</b>	14

## Remark:

1. The value with blue color is the maximum SAR Value of each test band.
2. Per FCC KDB Publication 447498 D01, if the reported (scaled) SAR measured at the middle channel or highest output power channel for each test configuration is  $\leq 0.8$  W/kg then testing at the other channels is optional for such test configuration(s).
3. When different maximum output power is specified for the bands, begin SAR measurement in the band with higher specified maximum output power. The highest reported SAR for the tested configuration is adjusted by the ratio of lower to higher specified maximum output power for the two bands. When the adjusted SAR is  $\leq 1.2$  W/kg, SAR is not required for the band with lower maximum output power in that test configuration; otherwise, each band is tested independently for SAR.

Table 12: SAR Values [5GWLAN Band 3 IEEE 802.11a/n]

Ch.	Freq. (MHz)	Service	Test Position	Maximum Allowed Power (dBm)	Conducted Power (dBm)	Power drift	Scaling Factor	SAR <sub>1-g</sub> results(W/Kg)		Graph Results
								Measured	Reported	
<b>measured / reported SAR numbers – Body</b>										
159	5795	OFDM	Test Position 1	15.00	14.82	0.11	1.042	<b>0.038</b>	<b>0.040</b>	21
159	5795	OFDM	Test Position 2	15.00	14.82	-0.17	1.042	0.021	0.022	
159	5795	OFDM	Test Position 3	15.00	14.82	0.01	1.042	<b>0.054</b>	<b>0.056</b>	22

## Remark:

1. The value with blue color is the maximum SAR Value of each test band.
2. Per FCC KDB Publication 447498 D01, if the reported (scaled) SAR measured at the middle channel or highest output power channel for each test configuration is  $\leq 0.8$  W/kg then testing at the other channels is optional for such test configuration(s).
3. The initial test configuration for 2.4 GHz and 5 GHz OFDM transmission modes is determined by the 802.11 configuration with the highest maximum output power specified for production units, including tune-up tolerance, in each standalone and aggregated frequency band. SAR for the initial test configuration is measured using the highest maximum output power channel determined by the default power measurement procedures (see Clause 4).

## &lt;Combiner Antenna 0 and Antenna 1 with MIMO Open&gt;

## &lt;2.4G WLAN IEEE 802.11n&gt;

## &lt;Antenna 0&gt;

Ch.	Freq. (MHz)	Service	Test Position	Maximum Allowed Power (dBm)	Conducted Power (dBm)	Power drift	Scaling Factor	SAR <sub>1-g</sub> results(W/Kg)		Graph Results
								Measured	Reported	
<b>measured / reported SAR numbers – Body</b>										
6	2437	DSSS	Test Position 1	12.00	11.70	0.10	1.072	<b>0.123</b>	<b>0.132</b>	3
6	2437	DSSS	Test Position 2	12.00	11.70	0.12	1.072	0.088	0.094	
6	2437	DSSS	Test Position 3	12.00	11.70	0.02	1.072	<b>0.178</b>	<b>0.191</b>	4

## &lt;Antenna 1&gt;

Ch.	Freq. (MHz)	Service	Test Position	Maximum Allowed Power (dBm)	Conducted Power (dBm)	Power drift	Scaling Factor	SAR <sub>1-g</sub> results(W/Kg)		Graph Results
								Measured	Reported	
<b>measured / reported SAR numbers – Body</b>										
6	2437	DSSS	Test Position 1	13.00	12.25	0.06	1.189	<b>0.177</b>	<b>0.210</b>	7
6	2437	DSSS	Test Position 2	13.00	12.25	0.01	1.189	0.114	0.136	
6	2437	DSSS	Test Position 3	13.00	12.25	0.03	1.189	<b>0.245</b>	<b>0.291</b>	8

## &lt;Combiner Antenna 0 and Antenna 1 with MIMO Open at IEEE 802.11n HT20 Mode &gt;

reported SAR WWAN and WLAN 2.4GHz, ΣSAR evaluation, SPLSRI						
Frequency band	Position	SAR <sub>1-gmax</sub> /W/kg		ΣSAR <1.6W/Kg	Distance Ri, mm	Ratio ≤ 0.040
		Antenna 0	Antenna 1			
IEEE 802.11n HT20 (MIMO)	Test Position 1	<b>0.132</b>	<b>0.132</b>	<b>0.264</b>		
	Test Position 2	0.094	0.136	0.230		
	Test Position 3	0.191	0.291	<b>0.482</b>		

## Remark:

1. The value with blue color is the maximum SAR Value of each test band.
2. Per FCC KDB Publication 447498 D01, if the reported (scaled) SAR measured at the middle channel or highest output power channel for each test configuration is ≤ 0.8 W/kg then testing at the other channels is optional for such test configuration(s).
3. MIMO SAR values can summary individual SAR values.
4. SAR is not required for the following IEEE 802.11n HT40 conditions as the highest reported SAR for IEEE 802.11n HT40 is adjusted by the ratio of IEEE 802.11n HT40 to IEEE 802.11n HT20 specified maximum output power and the adjusted SAR is ≤ 1.2 W/kg.

## &lt;5G WLAN Band 1 IEEE 802.11n&gt;

## &lt;Antenna 0&gt;

Ch.	Freq. (MHz)	Service	Test Position	Maximum Allowed Power (dBm)	Conducted Power (dBm)	Power drift	Scaling Factor	SAR <sub>1-g</sub> results(W/Kg)		Graph Results
								Measured	Reported	
<b>measured / reported SAR numbers – Body</b>										
36	5180	OFDM	Test Position 1	16.00	15.12	0.14	1.225	<b>0.047</b>	<b>0.058</b>	11
36	5180	OFDM	Test Position 2	16.00	15.12	0.11	1.225	0.029	0.036	
36	5180	OFDM	Test Position 3	16.00	15.12	0.10	1.225	<b>0.076</b>	<b>0.093</b>	12

## &lt;Antenna 1&gt;

Ch.	Freq. (MHz)	Service	Test Position	Maximum Allowed Power (dBm)	Conducted Power (dBm)	Power drift	Scaling Factor	SAR <sub>1-g</sub> results(W/Kg)		Graph Results
								Measured	Reported	
<b>measured / reported SAR numbers – Body</b>										
36	5180	OFDM	Test Position 1	15.00	14.77	-0.01	1.054	<b>0.041</b>	<b>0.043</b>	15
36	5180	OFDM	Test Position 2	15.00	14.77	-0.16	1.054	0.025	0.026	
36	5180	OFDM	Test Position 3	15.00	14.77	0.05	1.054	<b>0.069</b>	<b>0.073</b>	16

## &lt;Combiner Antenna 0 and Antenna 1 with MIMO Open at IEEE 802.11n HT20 Mode &gt;

## reported SAR WWAN and WLAN 2.4GHz, ΣSAR evaluation, SPLSRi

Frequency band	Position	SAR <sub>1-gmax</sub> /W/kg		ΣSAR <1.6W/Kg	Distance Ri, mm	Ratio ≤ 0.040
		Antenna 0	Antenna 1			
IEEE 802.11n HT20 (MIMO)	Test Position 1	<b>0.058</b>	<b>0.043</b>	<b>0.101</b>		
	Test Position 2	0.036	0.026	0.062		
	Test Position 3	<b>0.093</b>	<b>0.073</b>	<b>0.166</b>		

## Remark:

1. The value with blue color is the maximum SAR Value of each test band.
2. Per FCC KDB Publication 447498 D01, if the reported (scaled) SAR measured at the middle channel or highest output power channel for each test configuration is ≤ 0.8 W/kg then testing at the other channels is optional for such test configuration(s).
3. MIMO SAR values can summary individual SAR values.
4. SAR is not required for the following IEEE 802.11n HT40 conditions as the highest reported SAR for IEEE 802.11n HT40 is adjusted by the ratio of IEEE 802.11n HT40 to IEEE 802.11n HT20 specified maximum output power and the adjusted SAR is ≤ 1.2 W/kg.

## &lt;5GWLAN Band 3 IEEE 802.11n&gt;

## &lt;Antenna 0&gt;

Ch.	Freq. (MHz)	Service	Test Position	Maximum Allowed Power (dBm)	Conducted Power (dBm)	Power drift	Scaling Factor	SAR <sub>1-g</sub> results(W/Kg)		Graph Results
								Measured	Reported	
<i>measured / reported SAR numbers – Body</i>										
159	5795	OFDM	Test Position 1	15.00	14.59	0.01	1.099	<b>0.023</b>	<b>0.025</b>	19
159	5795	OFDM	Test Position 2	15.00	14.59	0.10	1.099	0.011	0.012	
159	5795	OFDM	Test Position 3	15.00	14.59	0.05	1.099	<b>0.025</b>	<b>0.027</b>	20

## &lt;Antenna 1&gt;

Ch.	Freq. (MHz)	Service	Test Position	Maximum Allowed Power (dBm)	Conducted Power (dBm)	Power drift	Scaling Factor	SAR <sub>1-g</sub> results(W/Kg)		Graph Results
								Measured	Reported	
<i>measured / reported SAR numbers – Body</i>										
159	5795	OFDM	Test Position 1	15.00	14.82	0.11	1.042	<b>0.038</b>	<b>0.040</b>	21
159	5795	OFDM	Test Position 2	15.00	14.82	-0.17	1.042	0.021	0.022	
159	5795	OFDM	Test Position 3	15.00	14.82	0.01	1.042	<b>0.054</b>	<b>0.056</b>	22

## &lt;Combiner Antenna 0 and Antenna 1 with MIMO Open at IEEE 802.11n HT20 Mode &gt;

## reported SAR WWAN and WLAN 2.4GHz, ΣSAR evaluation, SPLSRi

Frequency band	Position	SAR <sub>1-gmax</sub> /W/kg		ΣSAR <1.6W/Kg	Distance Ri, mm	Ratio ≤ 0.040
		Antenna 0	Antenna 1			
IEEE 802.11n HT40 (MIMO)	Test Position 1	<b>0.025</b>	<b>0.040</b>	<b>0.065</b>		
	Test Position 2	0.012	0.022	0.034		
	Test Position 3	<b>0.027</b>	<b>0.056</b>	<b>0.083</b>		

## Remark:

1. The value with blue color is the maximum SAR Value of each test band.
2. Per FCC KDB Publication 447498 D01, if the reported (scaled) SAR measured at the middle channel or highest output power channel for each test configuration is ≤ 0.8 W/kg then testing at the other channels is optional for such test configuration(s).
3. MIMO SAR values can summary individual SAR values.
4. SAR is not required for the following IEEE 802.11n HT20 conditions as the highest reported SAR for IEEE 802.11n HT20 is adjusted by the ratio of IEEE 802.11n HT20 to IEEE 802.11n HT40 specified maximum output power and the adjusted SAR is ≤ 1.2 W/kg.

**5.7. SAR Measurement Variability**

SAR measurement variability must be assessed for each frequency band, which is determined by the SAR probe calibration point and tissue-equivalent medium used for the device measurements. When both head and body tissue-equivalent media are required for SAR measurements in a frequency band, the variability measurement procedures should be applied to the tissue medium with the highest measured SAR, using the

highest measured SAR configuration for that tissue-equivalent medium. The following procedures are applied to determine if repeated measurements are required.

- 1) Repeated measurement is not required when the original highest measured SAR is  $< 0.80$  W/kg; steps 2) through 4) do not apply.
- 2) When the original highest measured SAR is  $\geq 0.80$  W/kg, repeat that measurement once.
- 3) Perform a second repeated measurement only if the ratio of largest to smallest SAR for the original and first repeated measurements is  $> 1.20$  or when the original or repeated measurement is  $\geq 1.45$  W/kg (~10% from the 1-g SAR limit).
- 4) Perform a third repeated measurement only if the original, first or second repeated measurement is  $\geq 1.5$  W/kg and the ratio of largest to smallest SAR for the original, first and second repeated measurements is  $> 1.20$ .

The same procedures should be adapted for measurements according to extremity and occupational exposure limits by applying a factor of 2.5 for extremity exposure and a factor of 5 for occupational exposure to the corresponding SAR thresholds.

Thus the following procedures are applied to determine if repeated measurements are required for occupational exposure.

- 5) Repeated measurement is not required when the original highest measured SAR is  $< 4.00$  W/kg; steps 6) through 8) do not apply.
- 6) When the original highest measured SAR is  $\geq 4.00$  W/kg, repeat that measurement once.
- 7) Perform a second repeated measurement only if the ratio of largest to smallest SAR for the original and first repeated measurements is  $> 6.00$  or when the original or repeated measurement is  $\geq 7.25$  W/kg (~10% from the 1-g SAR limit).
- 8) Perform a third repeated measurement only if the original, first or second repeated measurement is  $\geq 7.5$  W/kg and the ratio of largest to smallest SAR for the original, first and second repeated measurements is  $> 1.20$ .

Frequency (MHz)	Mode	Antenna	Test Position	Repeated SAR (yes/no)	Highest SAR <sub>1-g</sub> (mW/g)	First Repeated	
						SAR <sub>1-g</sub> (mW/g)	Largest to Smallest SAR Ratio
2450	OFDM	MIMO	Test Position 3	no	0.423	no	no
5200	OFDM	MIMO	Test Position 3	no	0.145	no	no
5800	OFDM	MIMO	Test Position 3	no	0.079	no	no

## 5.8. Measurement Uncertainty (100-300MHz)

Not required as SAR measurement uncertainty analysis is required in SAR reports only when the highest measured SAR in a frequency band is  $\geq 1.5$  W/kg for 1-g SAR according to KDB865664D01.

## 5.9. System Check Results

### System Performance Check at 2450 MHz Body TSL

DUT: Dipole 2450 MHz; Type: D2450V2; Serial: 816

Date/Time: 07/27/2016 9:11:24 AM

Communication System: DuiJiangJi; Frequency: 2450 MHz; Duty Cycle: 1:1

Medium parameters used (interpolated):  $f = 2450$  MHz;  $\sigma = 1.98$  S/m;  $\epsilon_r = 52.30$ ;  $\rho = 1000$  kg/m<sup>3</sup>

Phantom section: Flat Section

DASY5 Configuration:

Probe: EX3DV4 - SN3836; ConvF(7.20, 7.20, 7.20); Calibrated: 07/07/2016;

Sensor-Surface: 2mm (Mechanical Surface Detection)

Electronics: DAE4 Sn760; Calibrated: 06/24/2016

Phantom: ELI 4.0; Type: QDOVA001BA;

Measurement SW: DASY52, Version 52.8 (2); SEMCAD X Version 14.6.6 (6824)

**System Performance Check at 2450MHz/Area Scan (81x111x1):** Interpolated grid: dx=1.200 mm, dy=1.20 mm

Maximum value of SAR (interpolated) = 6.24 mW/g

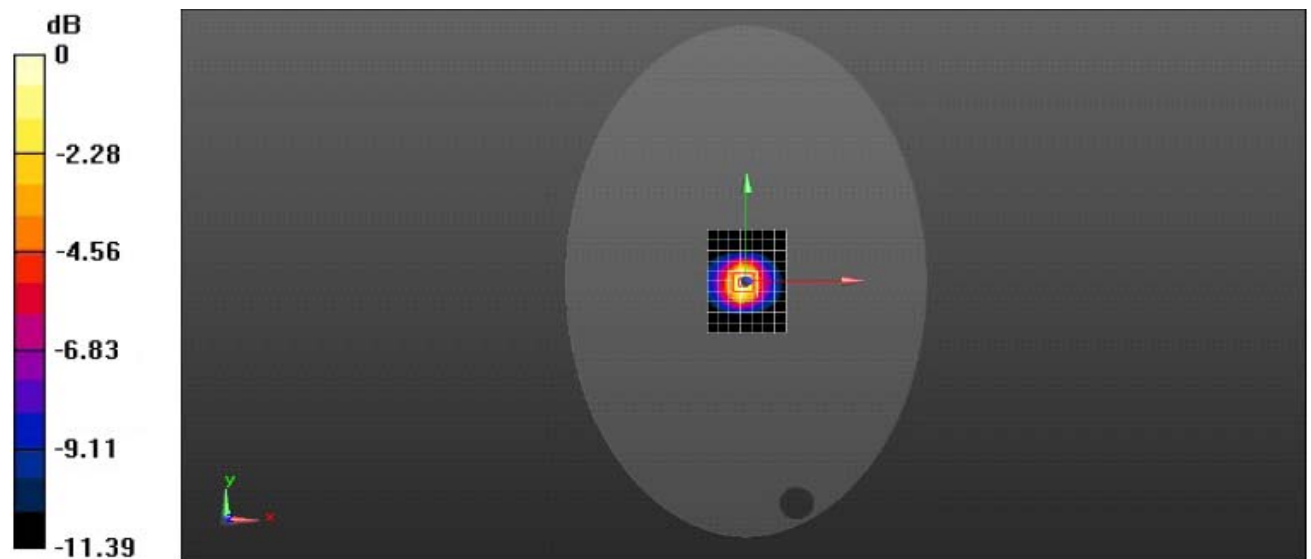
**System Performance Check at 2450MHz/Zoom Scan (7x7x7)/Cube 0:** Measurement grid: dx=5mm, dy=5mm, dz=5mm

Reference Value = 71.65 V/m; Power Drift = -0.03 dB

Peak SAR (extrapolated) = 8.49 mW/g

**SAR(1 g) = 4.98 mW/g; SAR(10 g) = 2.81 mW/g**

Maximum value of SAR (measured) = 5.60 mW/g



0 dB = 5.60 mW/g = 7.48 dB mW/g



**System Performance Check at 5200 MHz Body TSL**

DUT: Dipole 5GHz; Type: D5GHzV2; Serial: 1185

Date/Time: 07/28/2016 08:45:09 AM

Medium parameters used (interpolated):  $f = 5200$  MHz;  $\sigma = 5.16$  S/m;  $\epsilon_r = 48.40$ ;  $\rho = 1000$  kg/m<sup>3</sup>

Communication System: DuiJiangJi; Frequency: 5200 MHz; Duty Cycle: 1:1

Phantom section: Flat Section

DASY5 Configuration:

Probe: EX3DV4 - SN3836; ConvF(4.83, 4.83, 4.83); Calibrated: 07/07/2016;

Sensor-Surface: 2mm (Mechanical Surface Detection)

Electronics: DAE4 Sn760; Calibrated: 06/24/2016

Phantom: ELI 4.0; Type: QDOVA001BA;

Measurement SW: DASY52, Version 52.8 (2); SEMCAD X Version 14.6.6 (6824)

**System Performance Check at 5200MHz/Area Scan (81x91x1):** Interpolated grid: dx=1.00 mm, dy=1.00 mm

Maximum value of SAR (interpolated) = 8.08 mW/g

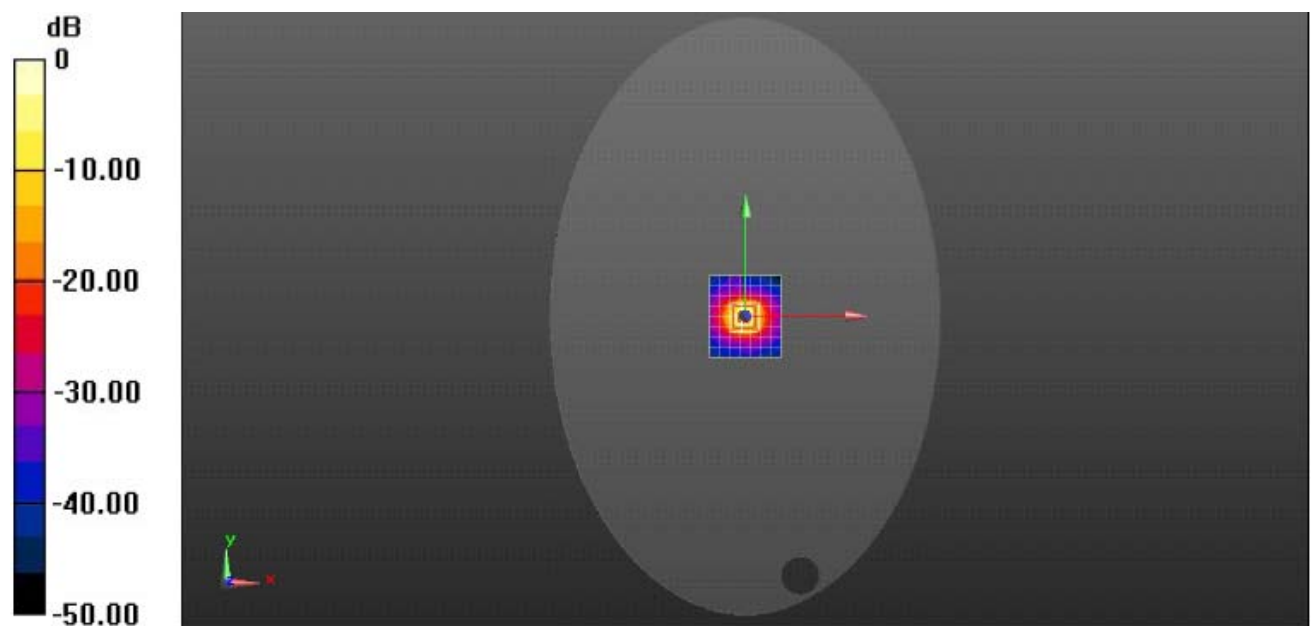
**System Performance Check at 5200MHz/Zoom Scan (8x8x7)/Cube 0:** Measurement grid: dx=4mm, dy=4mm, dz=2mm

Reference Value = 38.61 V/m; Power Drift = -0.06 dB

Peak SAR (extrapolated) = 22.4 mW/g

**SAR(1 g) = 7.12 mW/g; SAR(10 g) = 2.17 mW/g**

Maximum value of SAR (measured) = 8.58 mW/g



0 dB = 8.58 mW/g = 9.33 dB mW/g

**System Performance Check at 5800 MHz Body TSL**

DUT: Dipole 5GHz; Type: D5GHzV2; Serial: 1185

Date/Time: 07/29/2016 10:11:12 AM

Medium parameters used (interpolated):  $f = 5800$  MHz;  $\sigma = 6.22$  S/m;  $\epsilon_r = 47.10$ ;  $\rho = 1000$  kg/m<sup>3</sup>

Communication System: DuiJiangJi; Frequency: 5800 MHz; Duty Cycle: 1:1

Phantom section: Flat Section

DASY5 Configuration:

Probe: EX3DV4 - SN3836; ConvF(4.30, 4.30, 4.30); Calibrated: 07/07/2016;

Sensor-Surface: 2mm (Mechanical Surface Detection)

Electronics: DAE4 Sn760; Calibrated: 06/24/2016

Phantom: ELI 4.0; Type: QDOVA001BA;

Measurement SW: DASY52, Version 52.8 (2); SEMCAD X Version 14.6.6 (6824)

**System Performance Check at 5800MHz/Area Scan (81x91x1):** Interpolated grid: dx=1.00 mm, dy=1.00 mm

Maximum value of SAR (interpolated) = 8.04 mW/g

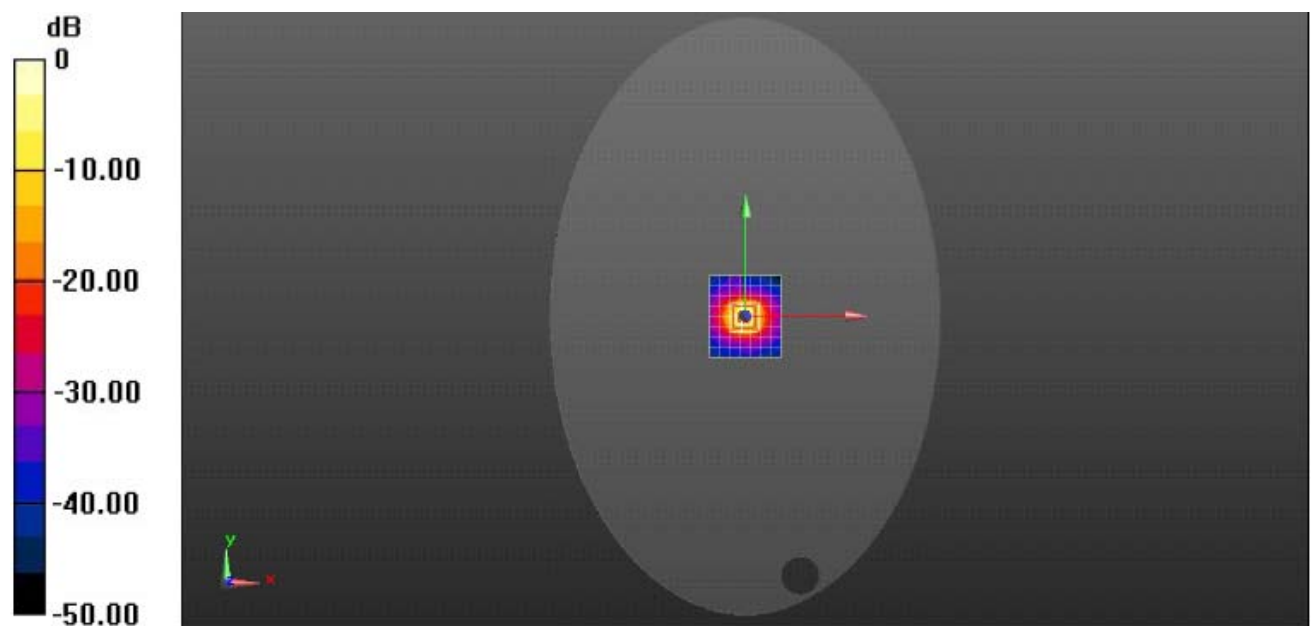
**System Performance Check at 5800MHz/Zoom Scan (8x8x7)/Cube 0:** Measurement grid: dx=4mm, dy=4mm, dz=2mm

Reference Value = 39.46 V/m; Power Drift = -0.01 dB

Peak SAR (extrapolated) = 23.6 mW/g

**SAR(1 g) = 7.41 mW/g; SAR(10 g) = 2.25 mW/g**

Maximum value of SAR (measured) = 8.82 mW/g



0 dB = 8.82 mW/g = 9.45 dB mW/g

## 5.10. SAR Test Graph Results

SAR plots for **the highest measured SAR** in each exposure configuration, wireless mode and frequency band combination according to FCC KDB 865664 D02

### Body- Worn 2.4GWLAN, Test Position 1, IEEE 802.11b, 2462 MHz, Antenna 0

Communication System: 2.4GWLAN; Frequency: 2462.0 MHz;Duty Cycle:1:1

Medium parameters used (interpolated):  $f = 2462.0$  MHz;  $\sigma = 1.99$  S/m;  $\epsilon_r = 53.1$ ;  $\rho = 1000$  kg/m<sup>3</sup>

Phantom section: Flat Section

Probe: EX3DV4 - SN3836; ConvF(7.20, 7.20, 7.20); Calibrated: 07/07/2016;

Sensor-Surface: 2mm (Mechanical Surface Detection)

Electronics: DAE4 Sn760; Calibrated: 06/24/2016

Phantom: ELI 4.0; Type: QDOVA001BA;

Measurement SW: DASY52, Version 52.8 (2); SEMCAD X Version 14.6.6 (6824)

**Test Position 1 2462 MHz / Area Scan (71x81x1):** Interpolated grid: dx=1.50 mm, dy=1.50 mm

Maximum value of SAR (interpolated) = 0.222 mW/g

**Test Position 1 2462 MHz / Zoom Scan (7x7x7)/Cube 0:** Measurement grid: dx=5mm, dy=5mm, dz=5mm

Reference Value = 1.724 V/m; Power Drift = 0.11 dB

Peak SAR (extrapolated) = 0.286 mW/g

**SAR(1 g) = 0.181 mW/g; SAR(10 g) = 0.116 mW/g**

Maximum value of SAR (measured) = 0.211 mW/g



0 dB = 0.211 mW/g = -6.76 dB mW/g

Date/Time: 07/27/2016 09:32:14 AM

Figure 1: Body- Worn 2.4GWLAN, Test Position 1, IEEE 802.11b, 2462 MHz , Antenna 0

**Body- Worn 2.4GWLAN, Test Position 3, IEEE 802.11b, 2462 MHz, Antenna 0**

Communication System: 2.4GWLAN; Frequency: 2462.0 MHz;Duty Cycle:1:1

Medium parameters used (interpolated):  $f = 2462.0$  MHz;  $\sigma = 1.99$  S/m;  $\epsilon_r = 53.1$ ;  $\rho = 1000$  kg/m<sup>3</sup>

Phantom section: Flat Section

Probe: EX3DV4 - SN3836; ConvF(7.20, 7.20, 7.20); Calibrated: 07/07/2016;

Sensor-Surface: 2mm (Mechanical Surface Detection)

Electronics: DAE4 Sn760; Calibrated: 06/24/2016

Phantom: ELI 4.0; Type: QDOVA001BA;

Measurement SW: DASY52, Version 52.8 (2); SEMCAD X Version 14.6.6 (6824)

**Test Position 3 2462 MHz / Area Scan (11x121x1):** Interpolated grid: dx=1.50 mm, dy=1.50 mm

Maximum value of SAR (interpolated) = 0.301 mW/g

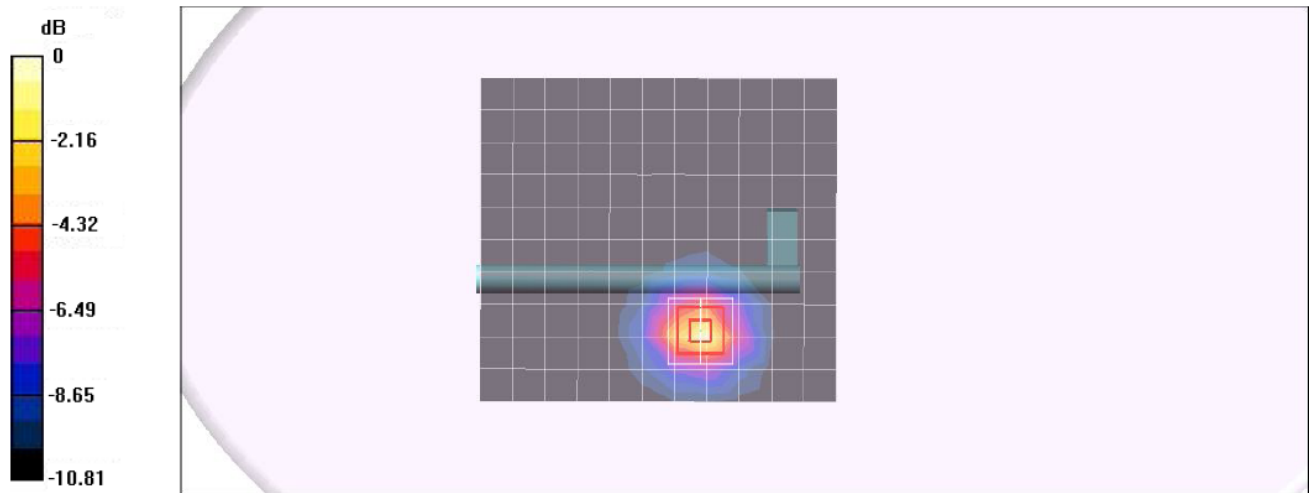
**Test Position 3 2462 MHz /Zoom Scan (7x7x7)/Cube 0:** Measurement grid: dx=5mm, dy=5mm, dz=5mm

Reference Value = 1.879 V/m; Power Drift = -0.15 dB

Peak SAR (extrapolated) = 0.426 mW/g

**SAR(1 g) = 0.222 mW/g; SAR(10 g) = 0.119 mW/g**

Maximum value of SAR (measured) = 0.316 mW/g



0 dB = 0.316 mW/g = -5.03 dB mW/g

Date/Time: 07/27/2016 13:17:01 PM

Plot 2: Body- Worn 2.4GWLAN, Test Position 3, IEEE 802.11b, 2462 MHz, Antenna 0

**Body- Worn 2.4GWLAN, Test Position 1, IEEE 802.11n HT20, 2437 MHz, Antenna 0**

Communication System: 2.4GWLAN; Frequency: 2437.0 MHz;Duty Cycle:1:1

Medium parameters used (interpolated):  $f = 2437.0$  MHz;  $\sigma = 1.98$  S/m;  $\epsilon_r = 51.4$ ;  $\rho = 1000$  kg/m<sup>3</sup>

Phantom section: Flat Section

Probe: EX3DV4 - SN3836; ConvF(7.20, 7.20, 7.20); Calibrated: 07/07/2016;

Sensor-Surface: 2mm (Mechanical Surface Detection)

Electronics: DAE4 Sn760; Calibrated: 06/24/2016

Phantom: ELI 4.0; Type: QDOVA001BA;

Measurement SW: DASY52, Version 52.8 (2); SEMCAD X Version 14.6.6 (6824)

**Test Position 1 2437 MHz / Area Scan (71x81x1):** Interpolated grid: dx=1.50 mm, dy=1.50 mm

Maximum value of SAR (interpolated) = 0.178 mW/g

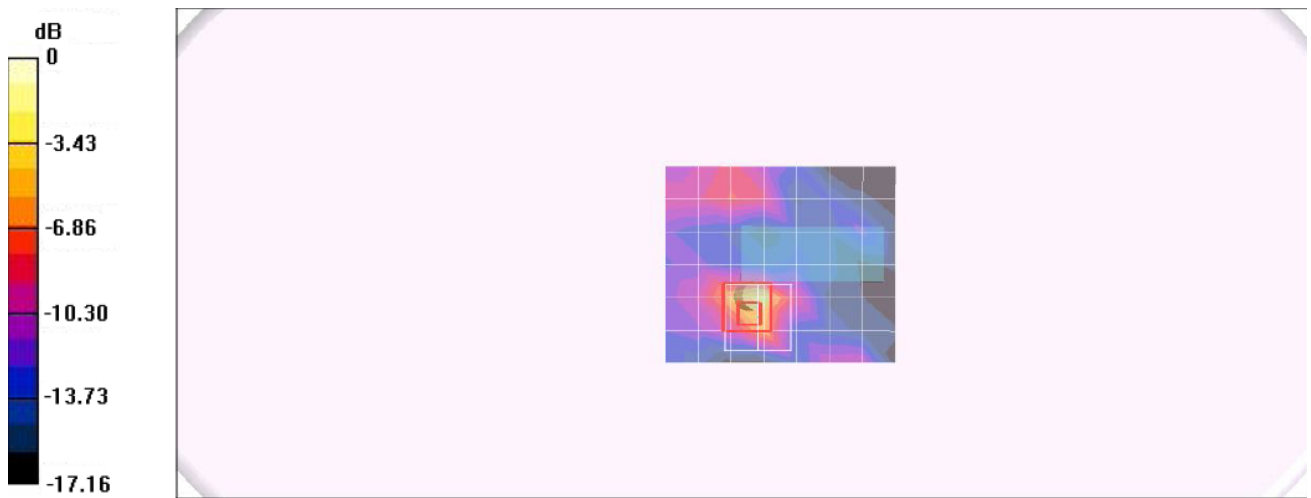
**Test Position 1 2437 MHz / Zoom Scan (7x7x7)/Cube 0:** Measurement grid: dx=5mm, dy=5mm, dz=5mm

Reference Value = 1.698 V/m; Power Drift = 0.10 dB

Peak SAR (extrapolated) = 0.255 mW/g

**SAR(1 g) = 0.123 mW/g; SAR(10 g) = 0.091 mW/g**

Maximum value of SAR (measured) = 0.185 mW/g



0 dB = 0.185 mW/g = -7.33 dB mW/g

Date/Time: 07/27/2016 10:06:34 AM

Figure 3: Body- Worn 2.4GWLAN, Test Position 1, IEEE 802.11n HT20, 2437 MHz , Antenna 0

**Body- Worn 2.4GWLAN, Test Position 3, IEEE 802.11n HT20, 2437 MHz, Antenna 0**

Communication System: 2.4GWLAN; Frequency: 2437.0 MHz; Duty Cycle: 1:1

Medium parameters used (interpolated):  $f = 2437.0$  MHz;  $\sigma = 1.98$  S/m;  $\epsilon_r = 51.4$ ;  $\rho = 1000$  kg/m<sup>3</sup>

Phantom section: Flat Section

Probe: EX3DV4 - SN3836; ConvF(7.20, 7.20, 7.20); Calibrated: 07/07/2016;

Sensor-Surface: 2mm (Mechanical Surface Detection)

Electronics: DAE4 Sn760; Calibrated: 06/24/2016

Phantom: ELI 4.0; Type: QDOVA001BA;

Measurement SW: DASY52, Version 52.8 (2); SEMCAD X Version 14.6.6 (6824)

**Test Position 3 2437 MHz / Area Scan (11x121x1):** Interpolated grid: dx=1.50 mm, dy=1.50 mm

Maximum value of SAR (interpolated) = 0.288 mW/g

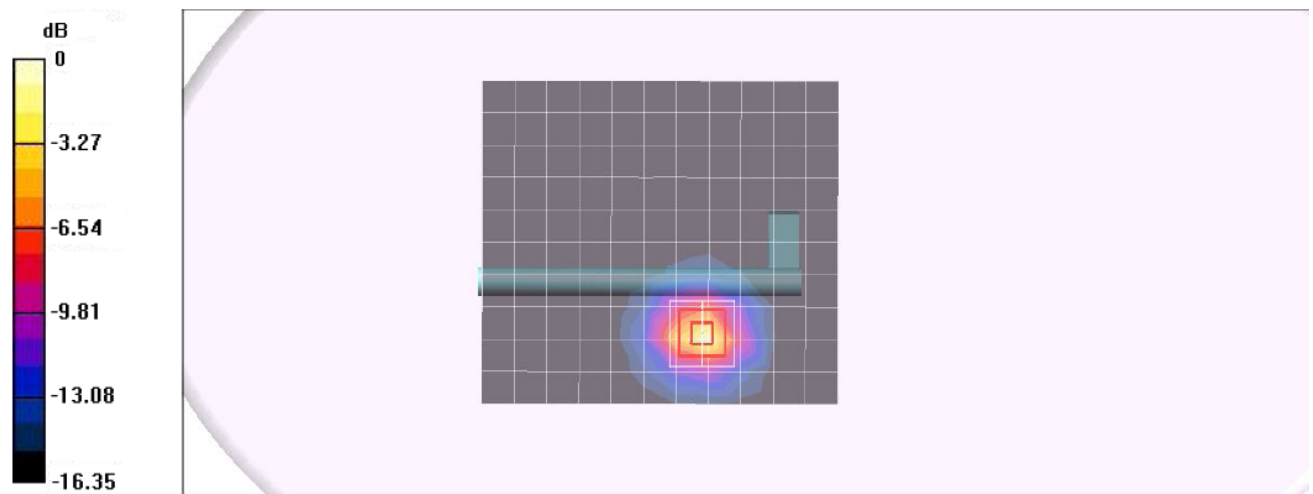
**Test Position 3 2437 MHz / Zoom Scan (7x7x7)/Cube 0:** Measurement grid: dx=5mm, dy=5mm, dz=5mm

Reference Value = 1.846 V/m; Power Drift = 0.02 dB

Peak SAR (extrapolated) = 0.412 mW/g

**SAR(1 g) = 0.178 mW/g; SAR(10 g) = 0.102 mW/g**

Maximum value of SAR (measured) = 0.288 mW/g



0 dB = 0.288 mW/g = -5.41 dB mW/g

Date/Time: 07/27/2016 13:51:33 PM

Plot 4: Body- Worn 2.4GWLAN, Test Position 3, IEEE 802.11n HT20, 2437 MHz, Antenna 0

**Body- Worn 2.4GWLAN, Test Position 1, IEEE 802.11b, 2412 MHz, Antenna 1**

Communication System: 2.4GWLAN; Frequency: 2412.0 MHz; Duty Cycle: 1:1

Medium parameters used (interpolated):  $f = 2412.0$  MHz;  $\sigma = 1.97$  S/m;  $\epsilon_r = 50.8$ ;  $\rho = 1000$  kg/m<sup>3</sup>

Phantom section: Flat Section

Probe: EX3DV4 - SN3836; ConvF(7.20, 7.20, 7.20); Calibrated: 07/07/2016;

Sensor-Surface: 2mm (Mechanical Surface Detection)

Electronics: DAE4 Sn760; Calibrated: 06/24/2016

Phantom: ELI 4.0; Type: QDOVA001BA;

Measurement SW: DASY52, Version 52.8 (2); SEMCAD X Version 14.6.6 (6824)

**Test Position 1 2412 MHz / Area Scan (71x81x1):** Interpolated grid: dx=1.50 mm, dy=1.50 mm

Maximum value of SAR (interpolated) = 0.371 mW/g

**Test Position 1 2412 MHz / Zoom Scan (7x7x7)/Cube 0:** Measurement grid: dx=5mm, dy=5mm, dz=5mm

Reference Value = 1.894 V/m; Power Drift = - 0.01 dB

Peak SAR (extrapolated) = 0.439 mW/g

**SAR(1 g) = 0.228 mW/g; SAR(10 g) = 0.152 mW/g**

Maximum value of SAR (measured) = 0.302 mW/g



0 dB = 0.302 mW/g = -5.20 dB mW/g

Date/Time: 07/27/2016 11:15:29 AM

Figure 5: Body- Worn 2.4GWLAN, Test Position 1, IEEE 802.11b, 2412 MHz , Antenna 1

**Body- Worn 2.4GWLAN, Test Position 3, IEEE 802.11b, 2412 MHz, Antenna 1**

Communication System: 2.4GWLAN; Frequency: 2462.0 MHz; Duty Cycle: 1:1

Medium parameters used (interpolated):  $f = 2412.0$  MHz;  $\sigma = 1.97$  S/m;  $\epsilon_r = 50.8$ ;  $\rho = 1000$  kg/m<sup>3</sup>

Phantom section: Flat Section

Probe: EX3DV4 - SN3836; ConvF(7.20, 7.20, 7.20); Calibrated: 07/07/2016;

Sensor-Surface: 2mm (Mechanical Surface Detection)

Electronics: DAE4 Sn760; Calibrated: 06/24/2016

Phantom: ELI 4.0; Type: QDOVA001BA;

Measurement SW: DASY52, Version 52.8 (2); SEMCAD X Version 14.6.6 (6824)

**Test Position 3 2412 MHz / Area Scan (11x121x1):** Interpolated grid: dx=1.50 mm, dy=1.50 mm

Maximum value of SAR (interpolated) = 0.451 mW/g

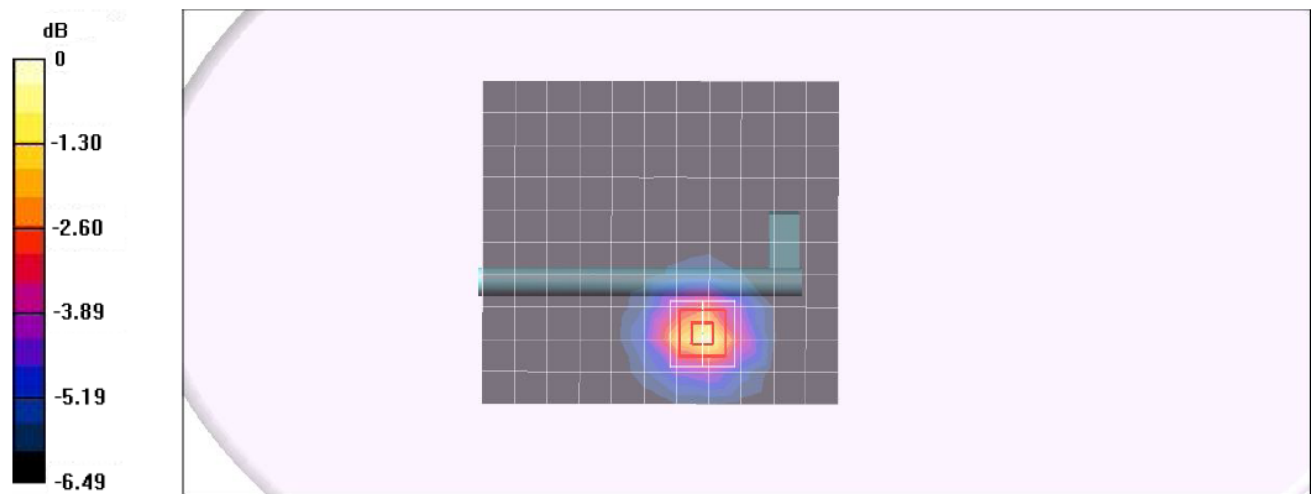
**Test Position 3 2412 MHz /Zoom Scan (7x7x7)/Cube 0:** Measurement grid: dx=5mm, dy=5mm, dz=5mm

Reference Value = 1.925 V/m; Power Drift = -0.11 dB

Peak SAR (extrapolated) = 0.631 mW/g

**SAR(1 g) = 0.395 mW/g; SAR(10 g) = 0.193 mW/g**

Maximum value of SAR (measured) = 0.512 mW/g



0 dB = 0.512 mW/g = -2.91 dB mW/g

Date/Time: 07/27/2016 14:44:28 PM

Plot 6: Body- Worn 2.4GWLAN, Test Position 3, IEEE 802.11b, 2412 MHz, Antenna 1



**Body- Worn 2.4GWLAN, Test Position 1, IEEE 802.11n HT20, 2437 MHz, Antenna 1**

Communication System: 2.4GWLAN; Frequency: 2437.0 MHz; Duty Cycle: 1:1

Medium parameters used (interpolated):  $f = 2437.0$  MHz;  $\sigma = 1.98$  S/m;  $\epsilon_r = 51.4$ ;  $\rho = 1000$  kg/m<sup>3</sup>

Phantom section: Flat Section

Probe: EX3DV4 - SN3836; ConvF(7.20, 7.20, 7.20); Calibrated: 07/07/2016;

Sensor-Surface: 2mm (Mechanical Surface Detection)

Electronics: DAE4 Sn760; Calibrated: 06/24/2016

Phantom: ELI 4.0; Type: QDOVA001BA;

Measurement SW: DASY52, Version 52.8 (2); SEMCAD X Version 14.6.6 (6824)

**Test Position 1 2437 MHz / Area Scan (71x81x1):** Interpolated grid: dx=1.50 mm, dy=1.50 mm

Maximum value of SAR (interpolated) = 0.252 mW/g

**Test Position 1 2437 MHz / Zoom Scan (7x7x7)/Cube 0:** Measurement grid: dx=5mm, dy=5mm, dz=5mm

Reference Value = 1.724 V/m; Power Drift = 0.06 dB

Peak SAR (extrapolated) = 0.366 mW/g

**SAR(1 g) = 0.177 mW/g; SAR(10 g) = 0.097 mW/g**

Maximum value of SAR (measured) = 0.234 mW/g



0 dB = 0.234 mW/g = -6.31 dB mW/g

Date/Time: 07/27/2016 12:24:31 AM

Figure 7: Body- Worn 2.4GWLAN, Test Position 1, IEEE 802.11n HT20, 2437 MHz , Antenna 1

**Body- Worn 2.4GWLAN, Test Position 3, IEEE 802.11n HT20, 2437 MHz, Antenna 1**

Communication System: 2.4GWLAN; Frequency: 2437.0 MHz;Duty Cycle:1:1

Medium parameters used (interpolated):  $f = 2437.0$  MHz;  $\sigma = 1.98$  S/m;  $\epsilon_r = 51.4$ ;  $\rho = 1000$  kg/m<sup>3</sup>

Phantom section: Flat Section

Probe: EX3DV4 - SN3836; ConvF(7.20, 7.20, 7.20); Calibrated: 07/07/2016;

Sensor-Surface: 2mm (Mechanical Surface Detection)

Electronics: DAE4 Sn760; Calibrated: 06/24/2016

Phantom: ELI 4.0; Type: QDOVA001BA;

Measurement SW: DASY52, Version 52.8 (2); SEMCAD X Version 14.6.6 (6824)

**Test Position 3 2437 MHz / Area Scan (11x121x1):** Interpolated grid: dx=1.50 mm, dy=1.50 mm

Maximum value of SAR (interpolated) = 0.344 mW/g

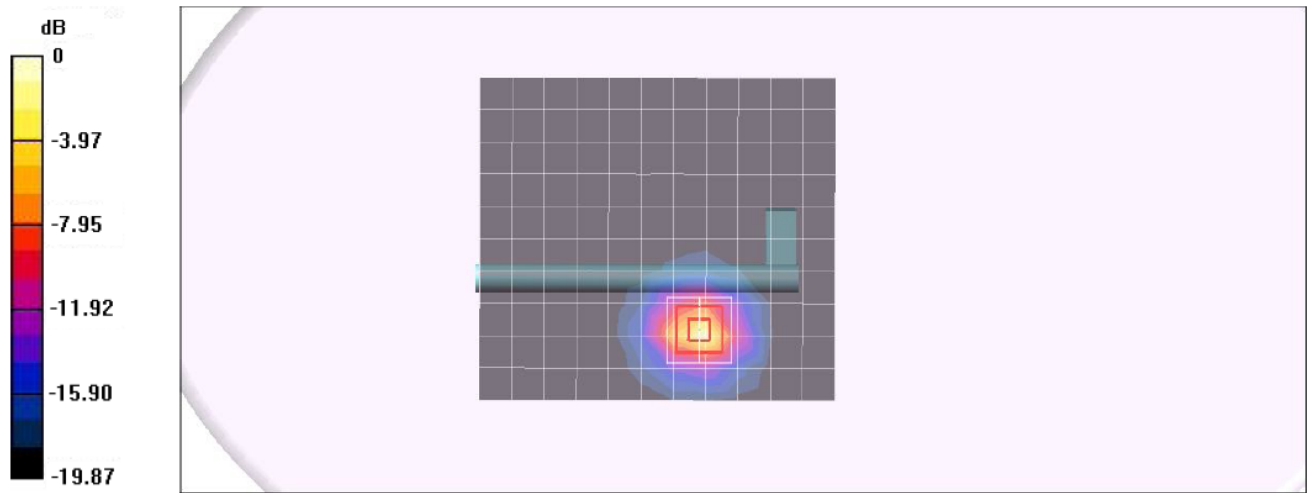
**Test Position 3 2437 MHz /Zoom Scan (7x7x7)/Cube 0:** Measurement grid: dx=5mm, dy=5mm, dz=5mm

Reference Value = 1.909 V/m; Power Drift = 0.03 dB

Peak SAR (extrapolated) = 0.585 mW/g

**SAR(1 g) = 0.245 mW/g; SAR(10 g) = 0.121 mW/g**

Maximum value of SAR (measured) = 0.324 mW/g



0 dB = 0.324 mW/g = -4.90 dB mW/g

Date/Time: 07/27/2016 15:19:44 PM

Plot 8: Body- Worn 2.4GWLAN, Test Position 3, IEEE 802.11n HT20, 2437 MHz, Antenna 1

**Body- Worn 5GWLAN Band 1, Test Position 1, IEEE 802.11a, 5180 MHz, Antenna 0**

Communication System: 5GWLAN; Frequency: 5180.0 MHz; Duty Cycle: 1:1

Medium parameters used (interpolated):  $f = 5180.0$  MHz;  $\sigma = 5.16$  S/m;  $\epsilon_r = 47.7$ ;  $\rho = 1000$  kg/m<sup>3</sup>

Phantom section: Flat Section

Probe: EX3DV4 - SN3836; ConvF(4.83, 4.83, 4.83); Calibrated: 07/07/2016;

Sensor-Surface: 2mm (Mechanical Surface Detection)

Electronics: DAE4 Sn760; Calibrated: 06/24/2016

Phantom: ELI 4.0; Type: QDOVA001BA;

Measurement SW: DASY52, Version 52.8 (2); SEMCAD X Version 14.6.6 (6824)

**Test Position 1 5180 MHz / Area Scan (91x101x1):** Interpolated grid: dx=1.00 mm, dy=1.00 mm

Maximum value of SAR (interpolated) = 0.133 mW/g

**Test Position 1 5180 MHz / Zoom Scan (7x7x9)/Cube 0:** Measurement grid: dx=4mm, dy=4mm, dz=3mm

Reference Value = 1.072 V/m; Power Drift = - 0.04 dB

Peak SAR (extrapolated) = 0.297 mW/g

**SAR(1 g) = 0.054 mW/g; SAR(10 g) = 0.032 mW/g**

Maximum value of SAR (measured) = 0.122 mW/g



0 dB = 0.122 mW/g = -9.14 dB mW/g

Date/Time: 07/28/2016 09:54:26 AM

Figure 9: Body- Worn 5GWLAN Band 1, Test Position 1, IEEE 802.11a, 5180 MHz , Antenna 0

**Body- Worn 5GWLAN Band 1, Test Position 3, IEEE 802.11a, 5180 MHz, Antenna 0**

Communication System: 5GWLAN; Frequency: 5180.0 MHz; Duty Cycle: 1:1

Medium parameters used (interpolated):  $f = 5180.0$  MHz;  $\sigma = 5.16$  S/m;  $\epsilon_r = 47.7$ ;  $\rho = 1000$  kg/m<sup>3</sup>

Phantom section: Flat Section

Probe: EX3DV4 - SN3836; ConvF(4.83, 4.83, 4.83); Calibrated: 07/07/2016;

Sensor-Surface: 2mm (Mechanical Surface Detection)

Electronics: DAE4 Sn760; Calibrated: 06/24/2016

Phantom: ELI 4.0; Type: QDOVA001BA;

Measurement SW: DASY52, Version 52.8 (2); SEMCAD X Version 14.6.6 (6824)

**Test Position 1 5180 MHz / Area Scan (141x161x1):** Interpolated grid: dx=1.00 mm, dy=1.00 mm

Maximum value of SAR (interpolated) = 0.161 mW/g

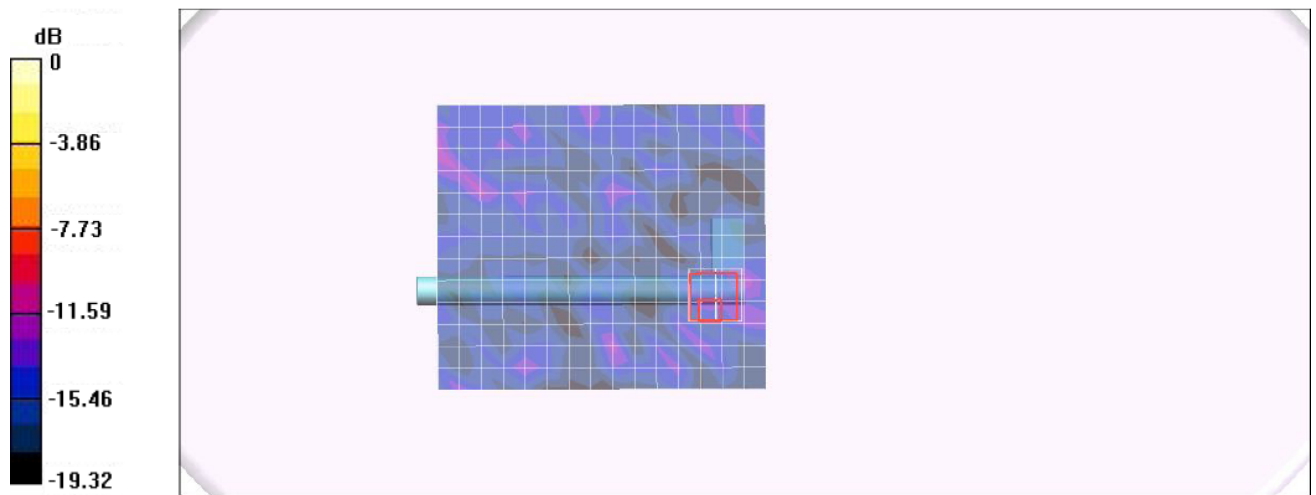
**Test Position 1 5180 MHz / Zoom Scan (7x7x9)/Cube 0:** Measurement grid: dx=4mm, dy=4mm, dz=3mm

Reference Value = 1.102 V/m; Power Drift = - 0.11 dB

Peak SAR (extrapolated) = 0.313 mW/g

**SAR(1 g) = 0.066 mW/g; SAR(10 g) = 0.039 mW/g**

Maximum value of SAR (measured) = 0.126 mW/g



0 dB = 0.126 mW/g = -9.00 dB mW/g

Date/Time: 07/28/2016 15:06:11 PM

Figure 10: Body- Worn 5GWLAN Band 1, Test Position 3, IEEE 802.11a, 5180 MHz , Antenna 0

**Body- Worn 5GWLAN Band 1, Test Position 1, IEEE 802.11n HT20, 5180 MHz, Antenna 0**

Communication System: 5GWLAN; Frequency: 5180.0 MHz;Duty Cycle:1:1

Medium parameters used (interpolated):  $f = 5180.0$  MHz;  $\sigma = 5.16$  S/m;  $\epsilon_r = 47.7$ ;  $\rho = 1000$  kg/m<sup>3</sup>

Phantom section: Flat Section

Probe: EX3DV4 - SN3836; ConvF(4.83, 4.83, 4.83); Calibrated: 07/07/2016;

Sensor-Surface: 2mm (Mechanical Surface Detection)

Electronics: DAE4 Sn760; Calibrated: 06/24/2016

Phantom: ELI 4.0; Type: QDOVA001BA;

Measurement SW: DASY52, Version 52.8 (2); SEMCAD X Version 14.6.6 (6824)

**Test Position 1 5180 MHz / Area Scan (91x101x1):** Interpolated grid: dx=1.00 mm, dy=1.00 mm

Maximum value of SAR (interpolated) = 0.129 mW/g

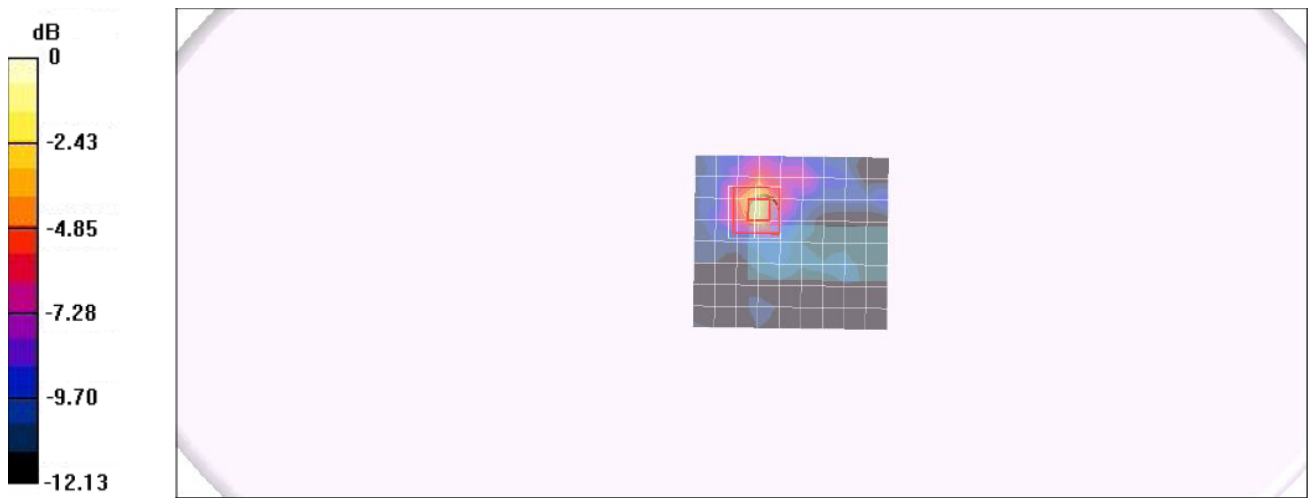
**Test Position 1 5180 MHz / Zoom Scan (7x7x9)/Cube 0:** Measurement grid: dx=4mm, dy=4mm, dz=3mm

Reference Value = 1.045 V/m; Power Drift = 0.14 dB

Peak SAR (extrapolated) = 0.292 mW/g

**SAR(1 g) = 0.047 mW/g; SAR(10 g) = 0.029 mW/g**

Maximum value of SAR (measured) = 0.118 mW/g



0 dB = 0.118 mW/g = -9.28 dB mW/g

Date/Time: 07/28/2016 10:35:07 AM

Figure 11: Body- Worn 5GWLAN Band 1, Test Position 1, IEEE 802.11n HT20, 5180 MHz , Antenna 0

**Body- Worn 5GWLAN Band 1, Test Position 3, IEEE 802.11n HT20, 5180 MHz, Antenna 0**

Communication System: 5GWLAN; Frequency: 5180.0 MHz;Duty Cycle:1:1

Medium parameters used (interpolated):  $f = 5180.0$  MHz;  $\sigma = 5.16$  S/m;  $\epsilon_r = 47.7$ ;  $\rho = 1000$  kg/m<sup>3</sup>

Phantom section: Flat Section

Probe: EX3DV4 - SN3836; ConvF(4.83, 4.83, 4.83); Calibrated: 07/07/2016;

Sensor-Surface: 2mm (Mechanical Surface Detection)

Electronics: DAE4 Sn760; Calibrated: 06/24/2016

Phantom: ELI 4.0; Type: QDOVA001BA;

Measurement SW: DASY52, Version 52.8 (2); SEMCAD X Version 14.6.6 (6824)

**Test Position 1 5180 MHz / Area Scan (141x161x1):** Interpolated grid: dx=1.00 mm, dy=1.00 mm

Maximum value of SAR (interpolated) = 0.175 mW/g

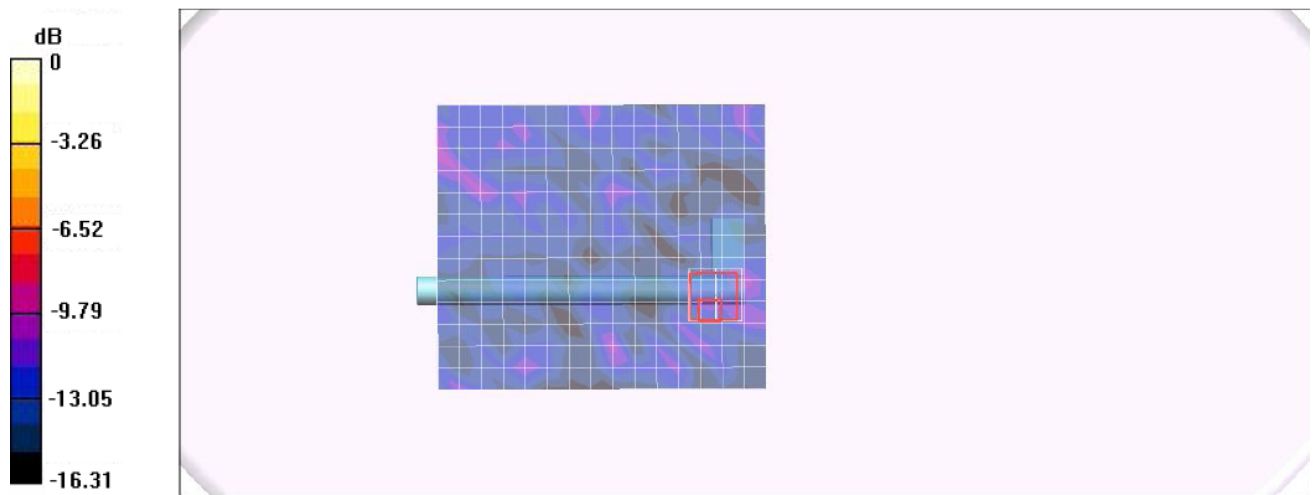
**Test Position 1 5180 MHz / Zoom Scan (7x7x9)/Cube 0:** Measurement grid: dx=4mm, dy=4mm, dz=3mm

Reference Value = 1.118 V/m; Power Drift = 0.10 dB

Peak SAR (extrapolated) = 0.327 mW/g

**SAR(1 g) = 0.076 mW/g; SAR(10 g) = 0.043 mW/g**

Maximum value of SAR (measured) = 0.131 mW/g



0 dB = 0.131 mW/g = -8.83 dB mW/g

Date/Time: 07/28/2016 15:52:41 PM

Figure 12: Body- Worn 5GWLAN Band 1, Test Position 3, IEEE 802.11n HT20, 5180 MHz , Antenna 0

**Body- Worn 5GWLAN Band 1, Test Position 1, IEEE 802.11n HT40, 5190 MHz, Antenna 1**

Communication System: 5GWLAN; Frequency: 5190.0 MHz; Duty Cycle: 1:1

Medium parameters used (interpolated):  $f = 5190.0$  MHz;  $\sigma = 5.16$  S/m;  $\epsilon_r = 47.7$ ;  $\rho = 1000$  kg/m<sup>3</sup>

Phantom section: Flat Section

Probe: EX3DV4 - SN3836; ConvF(4.83, 4.83, 4.83); Calibrated: 07/07/2016;

Sensor-Surface: 2mm (Mechanical Surface Detection)

Electronics: DAE4 Sn760; Calibrated: 06/24/2016

Phantom: ELI 4.0; Type: QDOVA001BA;

Measurement SW: DASY52, Version 52.8 (2); SEMCAD X Version 14.6.6 (6824)

**Test Position 1 5190 MHz / Area Scan (91x101x1):** Interpolated grid: dx=1.00 mm, dy=1.00 mm

Maximum value of SAR (interpolated) = 0.171 mW/g

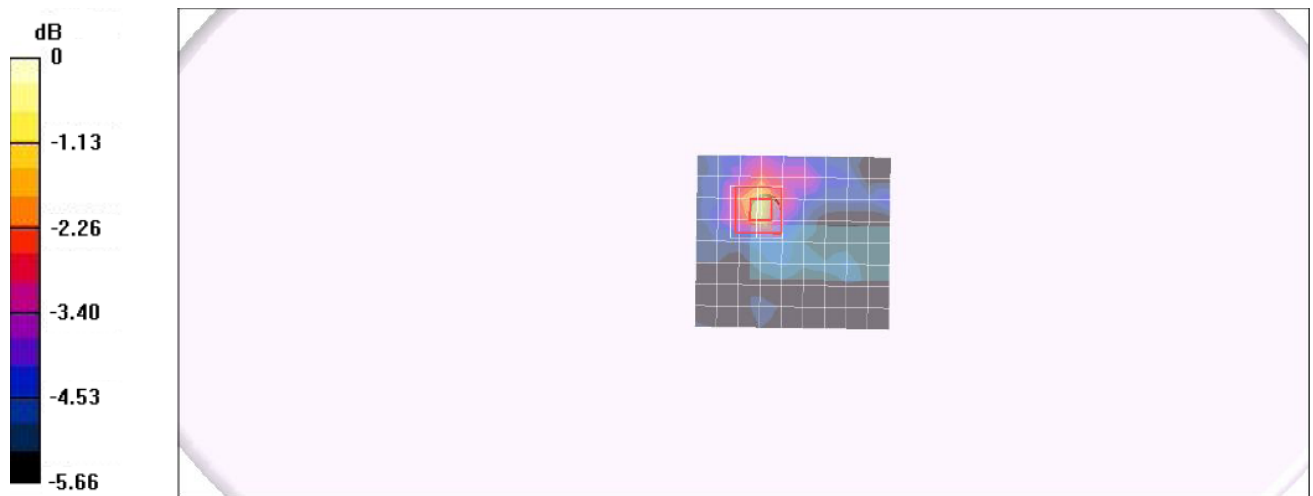
**Test Position 1 5190 MHz / Zoom Scan (7x7x9)/Cube 0:** Measurement grid: dx=4mm, dy=4mm, dz=3mm

Reference Value = 1.097 V/m; Power Drift = 0.11 dB

Peak SAR (extrapolated) = 0.327 mW/g

**SAR(1 g) = 0.072 mW/g; SAR(10 g) = 0.045 mW/g**

Maximum value of SAR (measured) = 0.136 mW/g



0 dB = 0.136 mW/g = -8.66 dB mW/g

Date/Time: 07/28/2016 10:47:35 AM

Figure 13: Body- Worn 5GWLAN Band 1, Test Position 1, IEEE 802.11n HT40, 5190 MHz , Antenna 1

**Body- Worn 5GWLAN Band 1, Test Position 3, IEEE 802.11n HT40, 5190 MHz, Antenna 0**

Communication System: 5GWLAN; Frequency: 5190.0 MHz;Duty Cycle:1:1

Medium parameters used (interpolated):  $f = 5190.0$  MHz;  $\sigma = 5.16$  S/m;  $\epsilon_r = 47.7$ ;  $\rho = 1000$  kg/m<sup>3</sup>

Phantom section: Flat Section

Probe: EX3DV4 - SN3836; ConvF(4.83, 4.83, 4.83); Calibrated: 07/07/2016;

Sensor-Surface: 2mm (Mechanical Surface Detection)

Electronics: DAE4 Sn760; Calibrated: 06/24/2016

Phantom: ELI 4.0; Type: QDOVA001BA;

Measurement SW: DASY52, Version 52.8 (2); SEMCAD X Version 14.6.6 (6824)

**Test Position 1 5190 MHz / Area Scan (141x161x1):** Interpolated grid: dx=1.00 mm, dy=1.00 mm

Maximum value of SAR (interpolated) = 0.189 mW/g

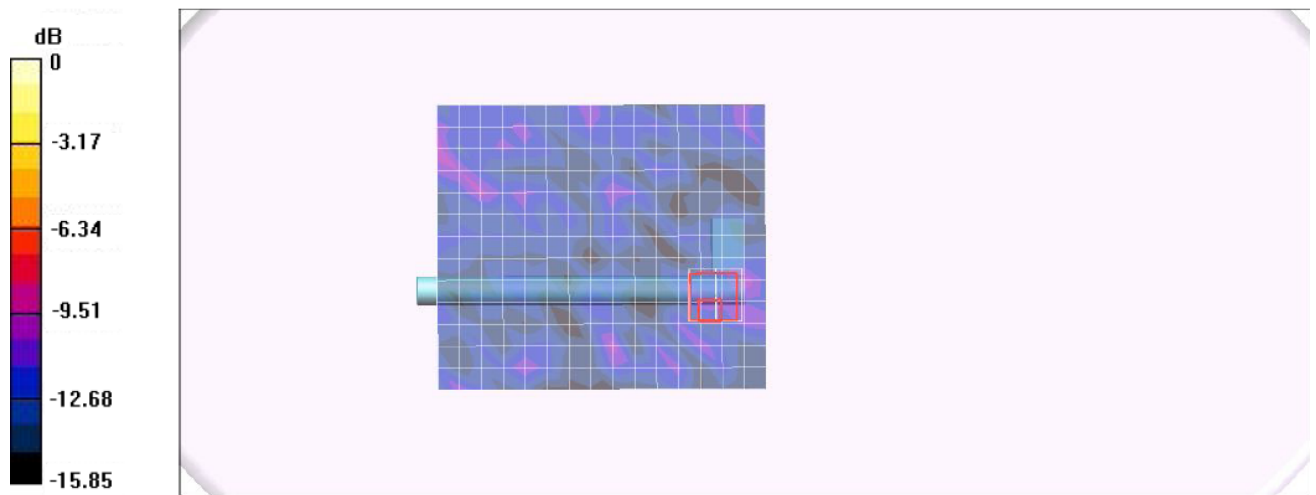
**Test Position 1 5190 MHz / Zoom Scan (7x7x9)/Cube 0:** Measurement grid: dx=4mm, dy=4mm, dz=3mm

Reference Value = 1.144 V/m; Power Drift = - 0.13 dB

Peak SAR (extrapolated) = 0.374 mW/g

**SAR(1 g) = 0.094 mW/g; SAR(10 g) = 0.051 mW/g**

Maximum value of SAR (measured) = 0.148 mW/g



0 dB = 0.148 mW/g = -8.30 dB mW/g

Date/Time: 07/28/2016 16:42:33 PM

Figure 14: Body- Worn 5GWLAN Band 1, Test Position 3, IEEE 802.11n HT40, 5190 MHz , Antenna 1



**Body- Worn 5GWLAN Band 1, Test Position 1, IEEE 802.11n HT20, 5180 MHz, Antenna 1**

Communication System: 5GWLAN; Frequency: 5180.0 MHz; Duty Cycle: 1:1

Medium parameters used (interpolated):  $f = 5180.0$  MHz;  $\sigma = 5.16$  S/m;  $\epsilon_r = 47.7$ ;  $\rho = 1000$  kg/m<sup>3</sup>

Phantom section: Flat Section

Probe: EX3DV4 - SN3836; ConvF(4.83, 4.83, 4.83); Calibrated: 07/07/2016;

Sensor-Surface: 2mm (Mechanical Surface Detection)

Electronics: DAE4 Sn760; Calibrated: 06/24/2016

Phantom: ELI 4.0; Type: QDOVA001BA;

Measurement SW: DASY52, Version 52.8 (2); SEMCAD X Version 14.6.6 (6824)

**Test Position 1 5180 MHz / Area Scan (91x101x1):** Interpolated grid: dx=1.00 mm, dy=1.00 mm

Maximum value of SAR (interpolated) = 0.126 mW/g

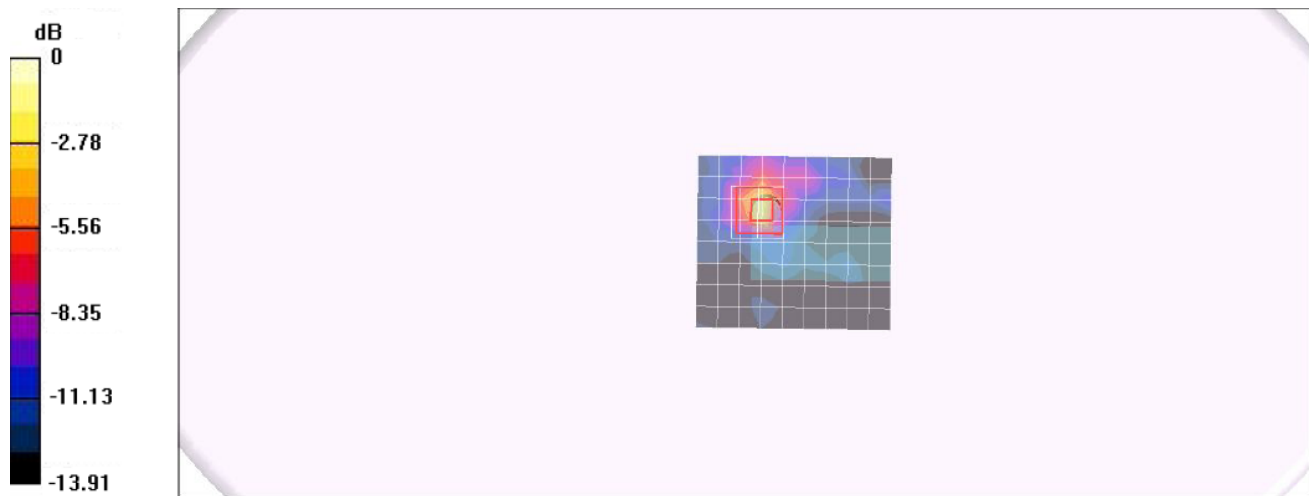
**Test Position 1 5180 MHz / Zoom Scan (7x7x9)/Cube 0:** Measurement grid: dx=4mm, dy=4mm, dz=3mm

Reference Value = 1.045 V/m; Power Drift = - 0.01 dB

Peak SAR (extrapolated) = 0.290 mW/g

**SAR(1 g) = 0.041 mW/g; SAR(10 g) = 0.029 mW/g**

Maximum value of SAR (measured) = 0.121 mW/g



0 dB = 0.121 mW/g = -9.17 dB mW/g

Date/Time: 07/28/2016 11:37:24 AM

Figure 15: Body- Worn 5GWLAN Band 1, Test Position 1, IEEE 802.11n HT20, 5180 MHz , Antenna 1

**Body- Worn 5GWLAN Band 1, Test Position 3, IEEE 802.11n HT20, 5180 MHz, Antenna 1**

Communication System: 5GWLAN; Frequency: 5180.0 MHz; Duty Cycle: 1:1

Medium parameters used (interpolated):  $f = 5180.0$  MHz;  $\sigma = 5.16$  S/m;  $\epsilon_r = 47.7$ ;  $\rho = 1000$  kg/m<sup>3</sup>

Phantom section: Flat Section

Probe: EX3DV4 - SN3836; ConvF(4.83, 4.83, 4.83); Calibrated: 07/07/2016;

Sensor-Surface: 2mm (Mechanical Surface Detection)

Electronics: DAE4 Sn760; Calibrated: 06/24/2016

Phantom: ELI 4.0; Type: QDOVA001BA;

Measurement SW: DASY52, Version 52.8 (2); SEMCAD X Version 14.6.6 (6824)

**Test Position 1 5180 MHz / Area Scan (141x161x1):** Interpolated grid: dx=1.00 mm, dy=1.00 mm

Maximum value of SAR (interpolated) = 0.175 mW/g

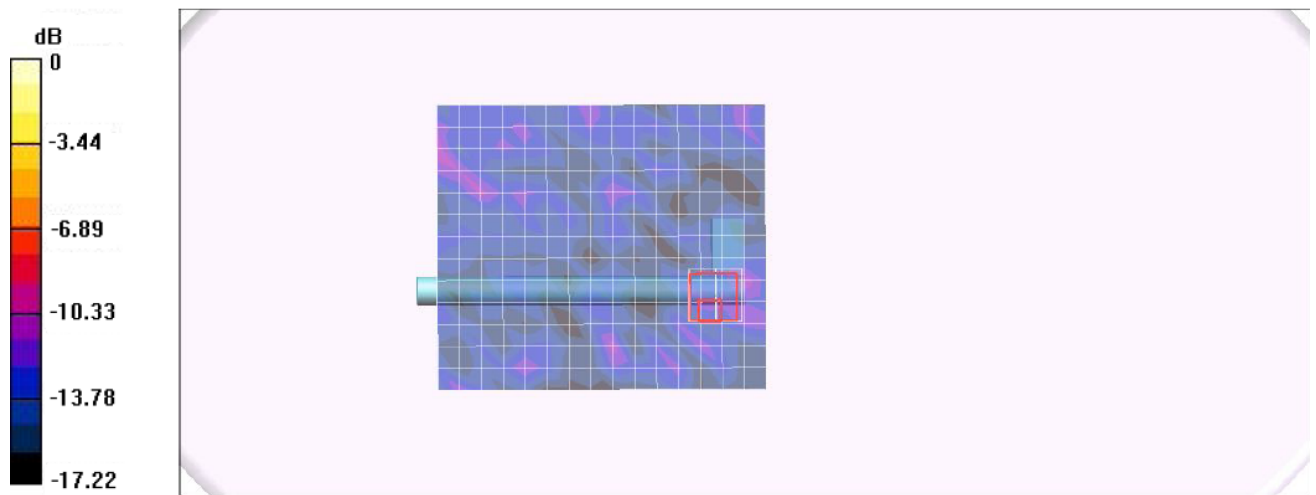
**Test Position 1 5180 MHz / Zoom Scan (7x7x9)/Cube 0:** Measurement grid: dx=4mm, dy=4mm, dz=3mm

Reference Value = 1.115 V/m; Power Drift = 0.05 dB

Peak SAR (extrapolated) = 0.327 mW/g

**SAR(1 g) = 0.069 mW/g; SAR(10 g) = 0.042 mW/g**

Maximum value of SAR (measured) = 0.131 mW/g



0 dB = 0.131 mW/g = -8.83 dB mW/g

Date/Time: 07/28/2016 17:12:54 PM

Figure 16: Body- Worn 5GWLAN Band 1, Test Position 3, IEEE 802.11n HT20, 5180 MHz , Antenna 1

**Body- Worn 5GWLAN Band 3, Test Position 1, IEEE 802.11n HT40, 5755 MHz, Antenna 0**

Communication System: 5GWLAN; Frequency: 5755.0 MHz; Duty Cycle: 1:1

Medium parameters used (interpolated):  $f = 5755$  MHz;  $\sigma = 6.20$  S/m;  $\epsilon_r = 46.8$ ;  $\rho = 1000$  kg/m<sup>3</sup>

Phantom section: Flat Section

DASY5 Configuration:

Probe: EX3DV4 - SN3836; ConvF(4.30, 4.30, 4.30); Calibrated: 07/07/2016;

Sensor-Surface: 2mm (Mechanical Surface Detection)

Electronics: DAE4 Sn760; Calibrated: 06/24/2016

Phantom: ELI 4.0; Type: QDOVA001BA;

Measurement SW: DASY52, Version 52.8 (2); SEMCAD X Version 14.6.6 (6824)

**Test Position 1 5755 MHz / Area Scan (91x101x1):** Interpolated grid: dx=1.00 mm, dy=1.00 mm

Maximum value of SAR (interpolated) = 0.030 mW/g

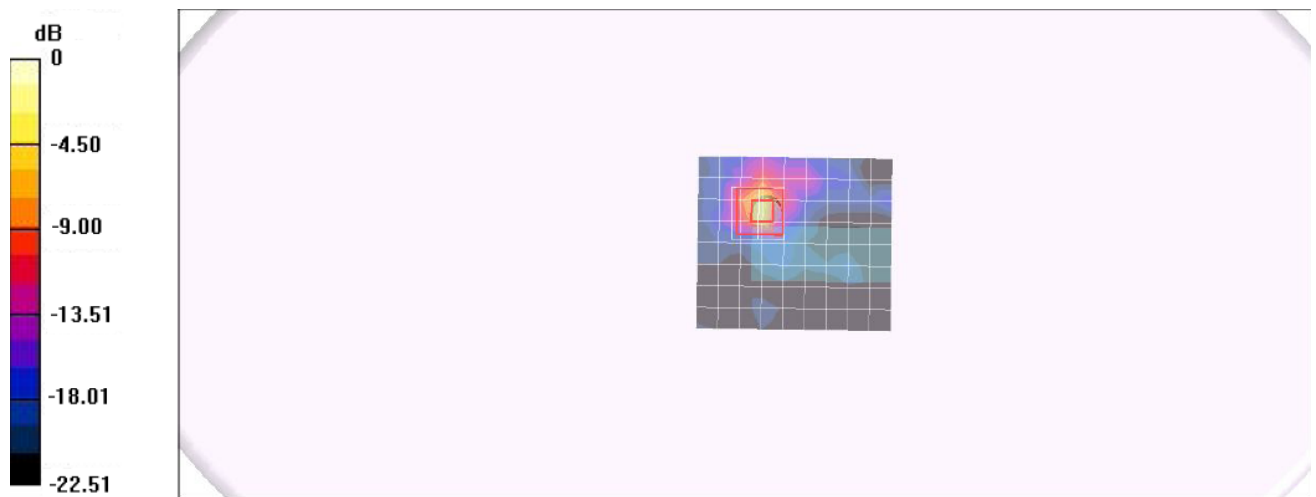
**Test Position 1 5755 MHz / Zoom Scan (7x7x9)/Cube 0:** Measurement grid: dx=4mm, dy=4mm, dz=3mm

Reference Value = 1.297 V/m; Power Drift = 0.02 dB

Peak SAR (extrapolated) = 0.112 mW/g

**SAR(1 g) = 0.026 mW/g; SAR(10 g) = 0.0098 mW/g**

Maximum value of SAR (measured) = 0.048 mW/g



0 dB = 0.048 mW/g = -13.19 dB mW/g

Date/Time: 07/29/2016 10:15:14 AM

Figure 17: Body- Worn 5GWLAN Band 3, Test Position 1, IEEE 802.11n HT40, 5755 MHz , Antenna 0

**Body- Worn 5GWLAN Band 3, Test Position 3, IEEE 802.11n HT40, 5755 MHz, Antenna 0**

Communication System: 5GWLAN; Frequency: 5755.0 MHz;Duty Cycle:1:1

Medium parameters used (interpolated):  $f = 5755$  MHz;  $\sigma = 6.20$  S/m;  $\epsilon_r = 46.8$ ;  $\rho = 1000$  kg/m<sup>3</sup>

Phantom section: Flat Section

DASY5 Configuration:

Probe: EX3DV4 - SN3836; ConvF(4.30, 4.30, 4.30); Calibrated: 07/07/2016;

Sensor-Surface: 2mm (Mechanical Surface Detection)

Electronics: DAE4 Sn760; Calibrated: 06/24/2016

Phantom: ELI 4.0; Type: QDOVA001BA;

Measurement SW: DASY52, Version 52.8 (2); SEMCAD X Version 14.6.6 (6824)

**Test Position 1 5755 MHz / Area Scan (141x161x1):** Interpolated grid: dx=1.00 mm, dy=1.00 mm

Maximum value of SAR (interpolated) = 0.035 mW/g

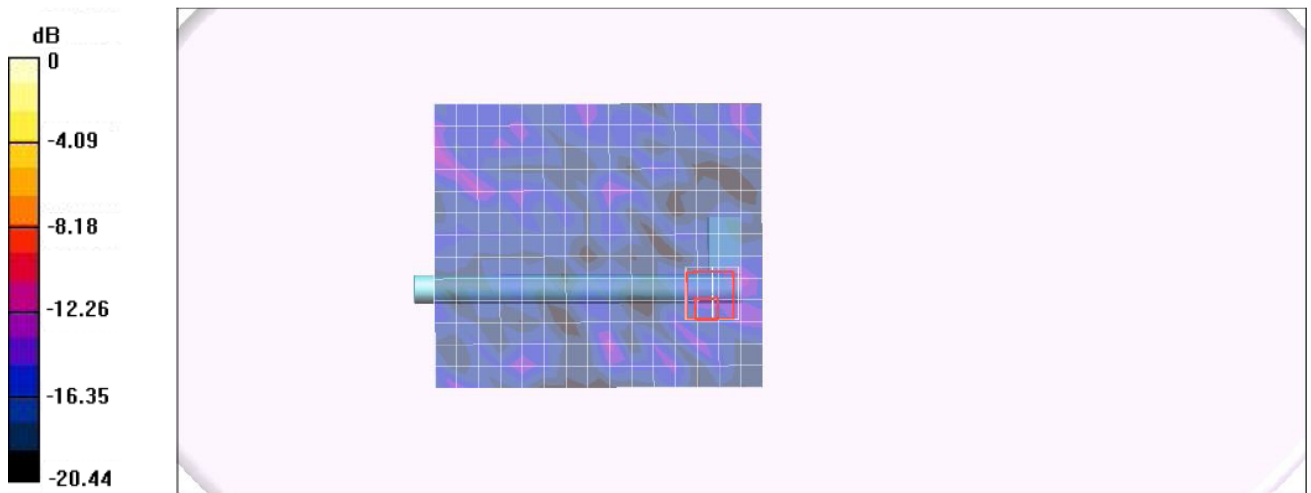
**Test Position 1 5755 MHz / Zoom Scan (7x7x9)/Cube 0:** Measurement grid: dx=4mm, dy=4mm, dz=3mm

Reference Value = 1.311 V/m; Power Drift = 0.05 dB

Peak SAR (extrapolated) = 0.118 mW/g

**SAR(1 g) = 0.029 mW/g; SAR(10 g) = 0.0099 mW/g**

Maximum value of SAR (measured) = 0.055 mW/g



0 dB = 0.055 mW/g = -12.60 dB mW/g

Date/Time: 07/29/2016 16:17:26 PM

Figure 18: Body- Worn 5GWLAN Band 3, Test Position 3, IEEE 802.11n HT40, 5755 MHz , Antenna 0

**Body- Worn 5GWLAN Band 3, Test Position 1, IEEE 802.11n HT40, 5795 MHz, Antenna 0**

Communication System: 5GWLAN; Frequency: 5795.0 MHz; Duty Cycle: 1:1

Medium parameters used (interpolated):  $f = 5795.0$  MHz;  $\sigma = 6.22$  S/m;  $\epsilon_r = 47.1$ ;  $\rho = 1000$  kg/m<sup>3</sup>

Phantom section: Flat Section

Probe: EX3DV4 - SN3836; ConvF(4.30, 4.30, 4.30); Calibrated: 07/07/2016;

Sensor-Surface: 2mm (Mechanical Surface Detection)

Electronics: DAE4 Sn760; Calibrated: 06/24/2016

Phantom: ELI 4.0; Type: QDOVA001BA;

Measurement SW: DASY52, Version 52.8 (2); SEMCAD X Version 14.6.6 (6824)

**Test Position 1 5795 MHz / Area Scan (91x101x1):** Interpolated grid: dx=1.00 mm, dy=1.00 mm

Maximum value of SAR (interpolated) = 0.030 mW/g

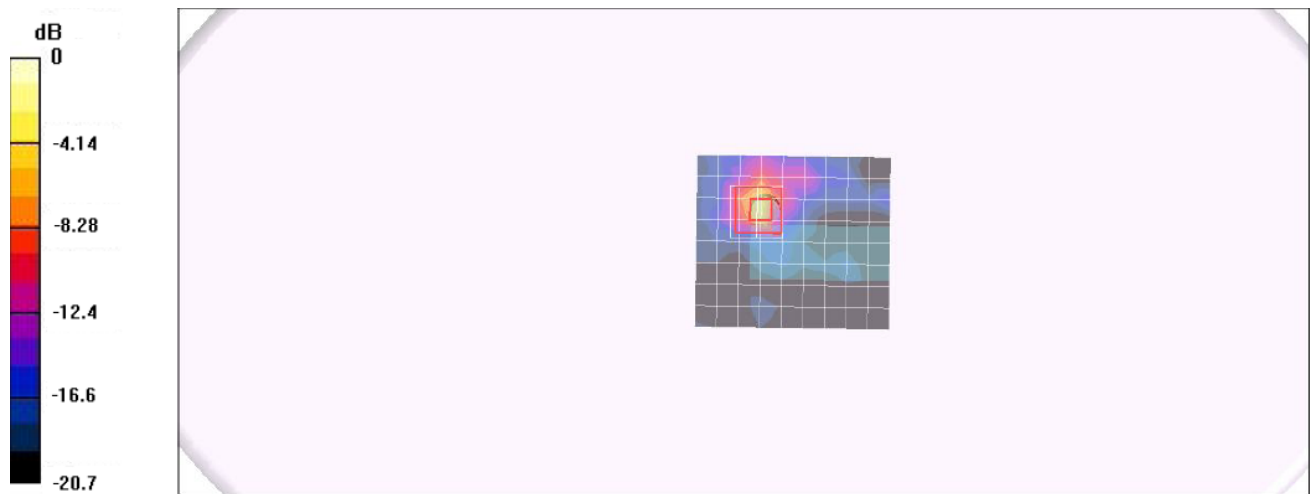
**Test Position 1 5795 MHz / Zoom Scan (7x7x9)/Cube 0:** Measurement grid: dx=4mm, dy=4mm, dz=3mm

Reference Value = 1.296 V/m; Power Drift = 0.01 dB

Peak SAR (extrapolated) = 0.112 mW/g

**SAR(1 g) = 0.023 mW/g; SAR(10 g) = 0.0098 mW/g**

Maximum value of SAR (measured) = 0.048 mW/g



0 dB = 0.048 mW/g = -13.19 dB mW/g

Date/Time: 07/29/2016 10:57:24 AM

Figure 19: Body- Worn 5GWLAN Band 3, Test Position 1, IEEE 802.11n HT40, 5795 MHz , Antenna 0

**Body- Worn 5GWLAN Band 3, Test Position 3, IEEE 802.11n HT20, 5795 MHz, Antenna 0**

Communication System: 5GWLAN; Frequency: 5795.0 MHz; Duty Cycle: 1:1

Medium parameters used (interpolated):  $f = 5795.0$  MHz;  $\sigma = 6.22$  S/m;  $\epsilon_r = 47.1$ ;  $\rho = 1000$  kg/m<sup>3</sup>

Phantom section: Flat Section

Probe: EX3DV4 - SN3836; ConvF(4.30, 4.30, 4.30); Calibrated: 07/07/2016;

Sensor-Surface: 2mm (Mechanical Surface Detection)

Electronics: DAE4 Sn760; Calibrated: 06/24/2016

Phantom: ELI 4.0; Type: QDOVA001BA;

Measurement SW: DASY52, Version 52.8 (2); SEMCAD X Version 14.6.6 (6824)

**Test Position 1 5795 MHz / Area Scan (141x161x1):** Interpolated grid: dx=1.00 mm, dy=1.00 mm

Maximum value of SAR (interpolated) = 0.030 mW/g

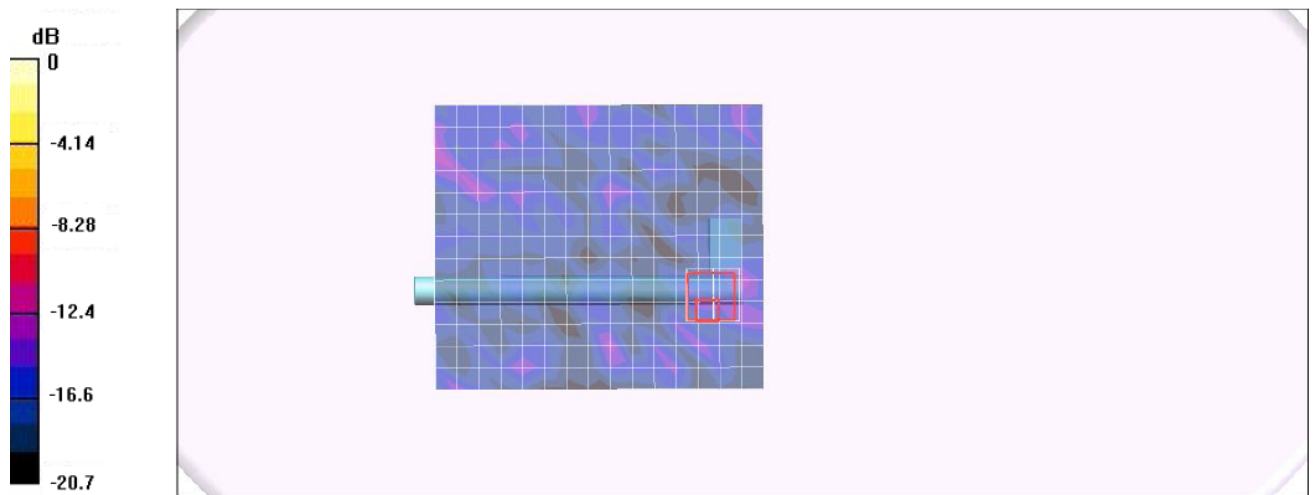
**Test Position 1 5795 MHz / Zoom Scan (7x7x9)/Cube 0:** Measurement grid: dx=4mm, dy=4mm, dz=3mm

Reference Value = 1.297 V/m; Power Drift = 0.05 dB

Peak SAR (extrapolated) = 0.112 mW/g

**SAR(1 g) = 0.025 mW/g; SAR(10 g) = 0.0098 mW/g**

Maximum value of SAR (measured) = 0.048 mW/g



0 dB = 0.048 mW/g = -13.19 dB mW/g

Date/Time: 07/29/2016 17:12:09 PM

Figure 20: Body- Worn 5GWLAN Band 3, Test Position 3, IEEE 802.11n HT40, 5795 MHz , Antenna 0

**Body- Worn 5GWLAN Band 3, Test Position 1, IEEE 802.11n HT40, 5795 MHz, Antenna 1**

Communication System: 5GWLAN; Frequency: 5795.0 MHz; Duty Cycle: 1:1

Medium parameters used (interpolated):  $f = 5795.0$  MHz;  $\sigma = 6.22$  S/m;  $\epsilon_r = 47.1$ ;  $\rho = 1000$  kg/m<sup>3</sup>

Phantom section: Flat Section

Probe: EX3DV4 - SN3836; ConvF(4.30, 4.30, 4.30); Calibrated: 07/07/2016;

Sensor-Surface: 2mm (Mechanical Surface Detection)

Electronics: DAE4 Sn760; Calibrated: 06/24/2016

Phantom: ELI 4.0; Type: QDOVA001BA;

Measurement SW: DASY52, Version 52.8 (2); SEMCAD X Version 14.6.6 (6824)

**Test Position 1 5795 MHz / Area Scan (91x101x1):** Interpolated grid: dx=1.00 mm, dy=1.00 mm

Maximum value of SAR (interpolated) = 0.048 mW/g

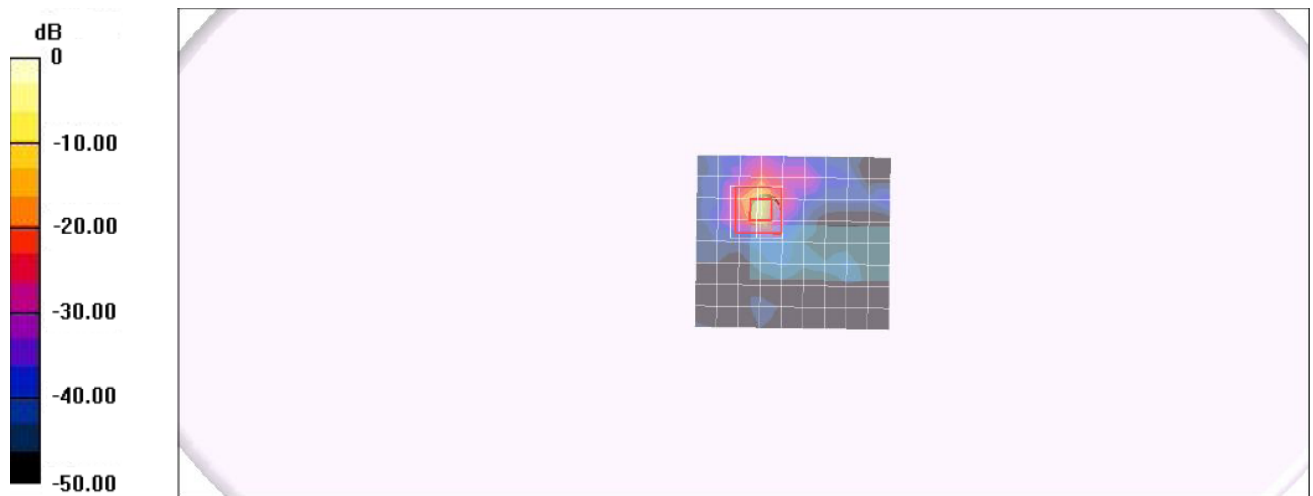
**Test Position 1 5795 MHz / Zoom Scan (7x7x9)/Cube 0:** Measurement grid: dx=4mm, dy=4mm, dz=3mm

Reference Value = 1.358 V/m; Power Drift = 0.11 dB

Peak SAR (extrapolated) = 0.252 mW/g

**SAR(1 g) = 0.038 mW/g; SAR(10 g) = 0.013 mW/g**

Maximum value of SAR (measured) = 0.112 mW/g



0 dB = 0.112 mW/g = -9.51 dB mW/g

Date/Time: 07/29/2016 12:11:52 AM

Figure 21: Body- Worn 5GWLAN Band 3, Test Position 1, IEEE 802.11n HT40, 5795 MHz , Antenna 1

**Body- Worn 5GWLAN Band 3, Test Position 3, IEEE 802.11n HT20, 5795 MHz, Antenna 1**

Communication System: 5GWLAN; Frequency: 5795.0 MHz;Duty Cycle:1:1

Medium parameters used (interpolated):  $f = 5795.0$  MHz;  $\sigma = 6.22$  S/m;  $\epsilon_r = 47.1$ ;  $\rho = 1000$  kg/m<sup>3</sup>

Phantom section: Flat Section

Probe: EX3DV4 - SN3836; ConvF(4.30, 4.30, 4.30); Calibrated: 07/07/2016;

Sensor-Surface: 2mm (Mechanical Surface Detection)

Electronics: DAE4 Sn760; Calibrated: 06/24/2016

Phantom: ELI 4.0; Type: QDOVA001BA;

Measurement SW: DASY52, Version 52.8 (2); SEMCAD X Version 14.6.6 (6824)

**Test Position 1 5795 MHz / Area Scan (141x161x1):** Interpolated grid: dx=1.00 mm, dy=1.00 mm

Maximum value of SAR (interpolated) = 0.078 mW/g

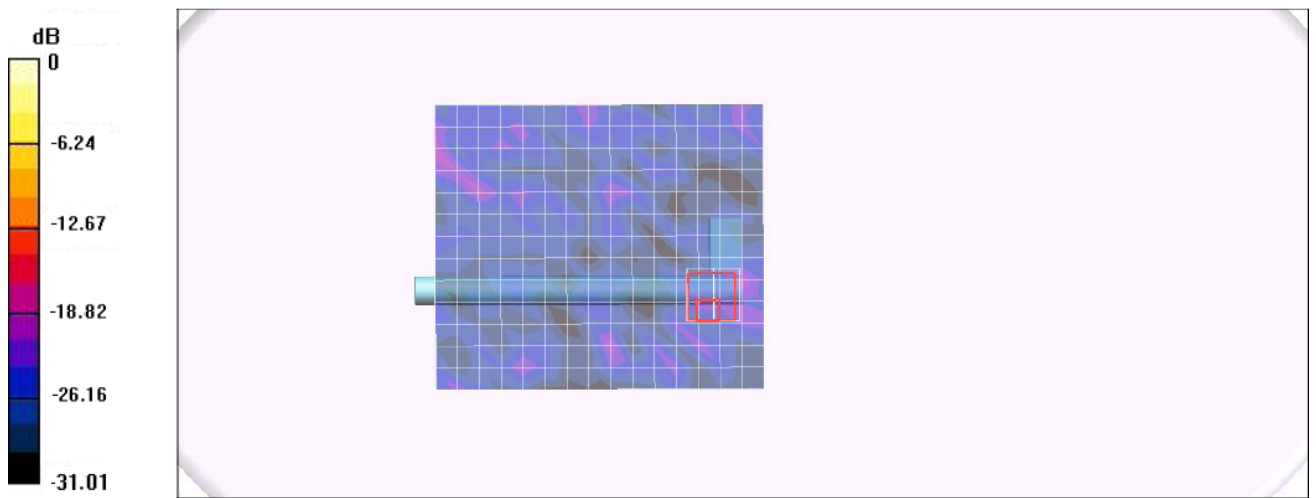
**Test Position 1 5795 MHz / Zoom Scan (7x7x9)/Cube 0:** Measurement grid: dx=4mm, dy=4mm, dz=3mm

Reference Value = 1.509 V/m; Power Drift = 0.01 dB

Peak SAR (extrapolated) = 0.237 mW/g

**SAR(1 g) = 0.054 mW/g; SAR(10 g) = 0.019 mW/g**

Maximum value of SAR (measured) = 0.108 mW/g



0 dB = 0.108 mW/g = -9.67 dB mW/g

Date/Time: 07/29/2016 18:45:07 PM

Figure 22: Body- Worn 5GWLAN Band 3, Test Position 3, IEEE 802.11n HT40, 5795 MHz , Antenna 1



# 6. Calibration Certificate

## 6.1. Probe Calibration Certificate



In Collaboration with  
**s p e a g**  
CALIBRATION LABORATORY



中国认可  
国际互认  
校准  
CALIBRATION  
CNAS L0570

Add: No.51 Xueyuan Road, Haidian District, Beijing, 100191, China  
Tel: +86-10-62304633-2218 Fax: +86-10-62304633-2209  
E-mail: cttl@chinattl.com [Http://www.chinattl.cn](http://www.chinattl.cn)

Client

Sunway

Certificate No: Z16-97101

CALIBRATION CERTIFICATE				
Object	EX3DV4 - SN:3836			
Calibration Procedure(s)	FD-Z11-2-004-01 Calibration Procedures for Dosimetric E-field Probes			
Calibration date:	July 07, 2016			
<p>This calibration Certificate documents the traceability to national standards, which realize the physical units of measurements(SI). The measurements and the uncertainties with confidence probability are given on the following pages and are part of the certificate.</p> <p>All calibrations have been conducted in the closed laboratory facility: environment temperature(22±3)°C and humidity&lt;70%.</p> <p>Calibration Equipment used (M&amp;TE critical for calibration)</p>				
Primary Standards	ID #	Cal Date(Calibrated by, Certificate No.)		Scheduled Calibration
Power Meter NRP2	101919	27-Jun-16 (CTTL, No.J16X04777)		Jun-17
Power sensor NRP-Z91	101547	27-Jun-16 (CTTL, No.J16X04777)		Jun-17
Power sensor NRP-Z91	101548	27-Jun-16 (CTTL, No.J16X04777)		Jun-17
Reference10dBAAttenuator	18N50W-10dB	13-Mar-16(CTTL,No.J16X01547)		Mar-18
Reference20dBAAttenuator	18N50W-20dB	13-Mar-16(CTTL, No.J16X01548)		Mar-18
Reference Probe EX3DV4	SN 3617	26-Aug-15(SPEAG,No.EX3-3617_Aug15)		Aug-16
DAE4	SN 1331	21-Jan-16(SPEAG, No.DAE4-1331_Jan16)		Jan -17
Secondary Standards	ID #	Cal Date(Calibrated by, Certificate No.)		Scheduled Calibration
SignalGeneratorMG3700A	6201052605	27-Jun-16 (CTTL, No.J16X04776)		Jun-17
Network Analyzer E5071C	MY46110673	26-Jan-16 (CTTL, No.J16X00894)		Jan -17
Calibrated by:	Name	Function	Signature	
	Yu Zongying	SAR Test Engineer		
Reviewed by:	Qi Dianyuan	SAR Project Leader		
Approved by:	Lu Bingsong	Deputy Director of the laboratory		
Issued: July 08, 2016				
This calibration certificate shall not be reproduced except in full without written approval of the laboratory.				



Add: No.51 Xueyuan Road, Haidian District, Beijing, 100191, China  
 Tel: +86-10-62304633-2218 Fax: +86-10-62304633-2209  
 E-mail: cttl@chinattl.com [Http://www.chinattl.cn](http://www.chinattl.cn)

### Glossary:

TSL	tissue simulating liquid
NORM <sub>x,y,z</sub>	sensitivity in free space
ConvF	sensitivity in TSL / NORM <sub>x,y,z</sub>
DCP	diode compression point
CF	crest factor (1/duty_cycle) of the RF signal
A,B,C,D	modulation dependent linearization parameters
Polarization $\Phi$	$\Phi$ rotation around probe axis
Polarization $\theta$	$\theta$ rotation around an axis that is in the plane normal to probe axis (at measurement center), i $\theta=0$ is normal to probe axis
Connector Angle	information used in DASY system to align probe sensor X to the robot coordinate system

### Calibration is Performed According to the Following Standards:

- IEEE Std 1528-2013, "IEEE Recommended Practice for Determining the Peak Spatial-Averaged Specific Absorption Rate (SAR) in the Human Head from Wireless Communications Devices: Measurement Techniques", June 2013
- IEC 62209-1, "Procedure to measure the Specific Absorption Rate (SAR) for hand-held devices used in close proximity to the ear (frequency range of 300MHz to 3GHz)", February 2005
- IEC 62209-2, "Procedure to determine the Specific Absorption Rate (SAR) for wireless communication devices used in close proximity to the human body (frequency range of 30 MHz to 6 GHz)", March 2010
- KDB 865664, "SAR Measurement Requirements for 100 MHz to 6 GHz"

### Methods Applied and Interpretation of Parameters:

- NORM<sub>x,y,z</sub>:** Assessed for E-field polarization  $\theta=0$  ( $f \leq 900\text{MHz}$  in TEM-cell;  $f > 1800\text{MHz}$ : waveguide). NORM<sub>x,y,z</sub> are only intermediate values, i.e., the uncertainties of NORM<sub>x,y,z</sub> does not effect the  $E^2$ -field uncertainty inside TSL (see below ConvF).
- NORM(f)<sub>x,y,z</sub> = NORM<sub>x,y,z</sub> \* frequency\_response** (see Frequency Response Chart). This linearization is implemented in DASY4 software versions later than 4.2. The uncertainty of the frequency response is included in the stated uncertainty of ConvF.
- DCP<sub>x,y,z</sub>:** DCP are numerical linearization parameters assessed based on the data of power sweep (no uncertainty required). DCP does not depend on frequency nor media.
- PAR:** PAR is the Peak to Average Ratio that is not calibrated but determined based on the signal characteristics.
- A<sub>x,y,z</sub>; B<sub>x,y,z</sub>; C<sub>x,y,z</sub>; VR<sub>x,y,z</sub>; A,B,C** are numerical linearization parameters assessed based on the data of power sweep for specific modulation signal. The parameters do not depend on frequency nor media. VR is the maximum calibration range expressed in RMS voltage across the diode.
- ConvF and Boundary Effect Parameters:** Assessed in flat phantom using E-field (or Temperature Transfer Standard for  $f \leq 800\text{MHz}$ ) and inside waveguide using analytical field distributions based on power measurements for  $f > 800\text{MHz}$ . The same setups are used for assessment of the parameters applied for boundary compensation (alpha, depth) of which typical uncertainty valued are given. These parameters are used in DASY4 software to improve probe accuracy close to the boundary. The sensitivity in TSL corresponds to NORM<sub>x,y,z</sub> \* ConvF whereby the uncertainty corresponds to that given for ConvF. A frequency dependent ConvF is used in DASY version 4.4 and higher which allows extending the validity from  $\pm 50\text{MHz}$  to  $\pm 100\text{MHz}$ .
- Spherical isotropy (3D deviation from isotropy):** in a field of low gradients realized using a flat phantom exposed by a patch antenna.
- Sensor Offset:** The sensor offset corresponds to the offset of virtual measurement center from the probe tip (on probe axis). No tolerance required.
- Connector Angle:** The angle is assessed using the information gained by determining the NORM<sub>x</sub> (no uncertainty required).





Add: No.51 Xueyuan Road, Haidian District, Beijing, 100191, China  
Tel: +86-10-62304633-2218 Fax: +86-10-62304633-2209  
E-mail: [cttl@chinattl.com](mailto:cttl@chinattl.com) [Http://www.chinattl.cn](http://www.chinattl.cn)

# Probe EX3DV4

SN: 3836

Calibrated: July 07, 2016

Calibrated for DASYS/EASY Systems

(Note: non-compatible with DASYS2 system!)



Add: No.51 Xueyuan Road, Haidian District, Beijing, 100191, China  
 Tel: +86-10-62304633-2218 Fax: +86-10-62304633-2209  
 E-mail: cttl@chinattl.com [Http://www.chinattl.cn](http://www.chinattl.cn)

## DASY/EASY – Parameters of Probe: EX3DV4 – SN: 3836

### Basic Calibration Parameters

	Sensor X	Sensor Y	Sensor Z	Unc (k=2)
Norm( $\mu\text{V}/(\text{V}/\text{m})^2$ ) <sup>A</sup>	0.40	0.46	0.43	$\pm 10.8\%$
DCP(mV) <sup>B</sup>	93.2	100.2	98.0	

### Modulation Calibration Parameters

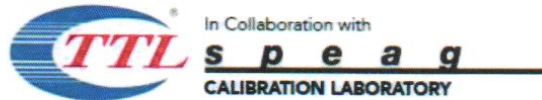
UID	Communication System Name		A dB	B dB $\cdot\mu\text{V}$	C	D dB	VR mV	Unc <sup>E</sup> (k=2)
0	CW	X	0.0	0.0	1.0	0.00	167.8	$\pm 2.0\%$
		Y	0.0	0.0	1.0		182.5	
		Z	0.0	0.0	1.0		176.7	

The reported uncertainty of measurement is stated as the standard uncertainty of Measurement multiplied by the coverage factor k=2, which for a normal distribution Corresponds to a coverage probability of approximately 95%.

<sup>A</sup> The uncertainties of Norm X, Y, Z do not affect the E<sup>2</sup>-field uncertainty inside TSL (see Page 5 and Page 6).

<sup>B</sup> Numerical linearization parameter: uncertainty not required.

<sup>E</sup> Uncertainty is determined using the max. deviation from linear response applying rectangular distribution and is expressed for the square of the field value.



Add: No.51 Xueyuan Road, Haidian District, Beijing, 100191, China  
 Tel: +86-10-62304633-2218 Fax: +86-10-62304633-2209  
 E-mail: cttl@chinattl.com [Http://www.chinattl.cn](http://www.chinattl.cn)

## DASY/EASY – Parameters of Probe: EX3DV4 – SN: 3836

### Calibration Parameter Determined in Head Tissue Simulating Media

f [MHz] <sup>C</sup>	Relative Permittivity <sup>F</sup>	Conductivity (S/m) <sup>F</sup>	ConvF X	ConvF Y	ConvF Z	Alpha <sup>G</sup>	Depth <sup>G</sup> (mm)	Unct. (k=2)
750	41.9	0.89	9.43	9.43	9.43	0.30	0.80	±12%
835	41.5	0.90	9.42	9.42	9.42	0.15	1.58	±12%
900	41.5	0.97	9.03	9.03	9.03	0.15	1.46	±12%
1750	40.1	1.37	8.04	8.04	8.04	0.14	1.63	±12%
1900	40.0	1.40	7.60	7.60	7.60	0.16	1.59	±12%
2300	39.5	1.67	7.45	7.45	7.45	0.53	0.68	±12%
2450	39.2	1.80	7.07	7.07	7.07	0.54	0.71	±12%
2600	39.0	1.96	6.96	6.96	6.96	0.61	0.66	±12%
5200	36.0	4.66	5.32	5.32	5.32	0.40	1.42	±13%
5300	35.9	4.76	5.13	5.13	5.13	0.40	1.40	±13%
5500	35.6	4.96	4.85	4.85	4.85	0.40	1.35	±13%
5600	35.5	5.07	4.59	4.59	4.59	0.40	1.45	±13%
5800	35.3	5.27	4.71	4.71	4.71	0.40	1.45	±13%

<sup>C</sup> Frequency validity above 300 MHz of ±100MHz only applies for DASY v4.4 and higher (Page 2), else it is restricted to ±50MHz. The uncertainty is the RSS of ConvF uncertainty at calibration frequency and the uncertainty for the indicated frequency band. Frequency validity below 300 MHz is ± 10, 25, 40, 50 and 70 MHz for ConvF assessments at 30, 64, 128, 150 and 220 MHz respectively. Above 5 GHz frequency validity can be extended to ± 110 MHz.

<sup>F</sup> At frequency below 3 GHz, the validity of tissue parameters ( $\epsilon$  and  $\sigma$ ) can be relaxed to ±10% if liquid compensation formula is applied to measured SAR values. At frequencies above 3 GHz, the validity of tissue parameters ( $\epsilon$  and  $\sigma$ ) is restricted to ±5%. The uncertainty is the RSS of the ConvF uncertainty for indicated target tissue parameters.

<sup>G</sup> Alpha/Depth are determined during calibration. SPEAG warrants that the remaining deviation due to the boundary effect after compensation is always less than ± 1% for frequencies below 3 GHz and below ± 2% for the frequencies between 3-6 GHz at any distance larger than half the probe tip diameter from the boundary.





Add: No.51 Xueyuan Road, Haidian District, Beijing, 100191, China  
 Tel: +86-10-62304633-2218 Fax: +86-10-62304633-2209  
 E-mail: [cttl@chinattl.com](mailto:cttl@chinattl.com) [Http://www.chinattl.cn](http://www.chinattl.cn)

## DASY/EASY – Parameters of Probe: EX3DV4 – SN: 3836

### Calibration Parameter Determined in Body Tissue Simulating Media

f [MHz] <sup>C</sup>	Relative Permittivity <sup>F</sup>	Conductivity (S/m) <sup>F</sup>	ConvF X	ConvF Y	ConvF Z	Alpha <sup>G</sup>	Depth <sup>G</sup> (mm)	Uct. (k=2)
750	55.5	0.96	9.38	9.38	9.38	0.30	0.85	± 12%
835	55.2	0.97	9.25	9.25	9.25	0.17	1.44	± 12%
900	55.0	1.05	8.95	8.95	8.95	0.14	1.60	± 12%
1750	53.4	1.49	7.64	7.64	7.64	0.17	1.71	± 12%
1900	53.3	1.52	7.33	7.33	7.33	0.18	1.80	± 12%
2300	52.9	1.81	7.45	7.45	7.45	0.51	0.80	± 12%
2450	52.7	1.95	7.20	7.20	7.20	0.62	0.70	± 12%
2600	52.5	2.16	6.99	6.99	6.99	0.52	0.79	± 12%
5200	49.0	5.30	4.83	4.83	4.83	0.50	1.25	± 13%
5300	48.9	5.42	4.60	4.60	4.60	0.50	1.35	± 13%
5500	48.6	5.65	4.32	4.32	4.32	0.50	1.35	± 13%
5600	48.5	5.77	4.20	4.20	4.20	0.50	1.40	± 13%
5800	48.2	6.00	4.30	4.30	4.30	0.50	1.30	± 13%

<sup>C</sup> Frequency validity above 300 MHz of ±100MHz only applies for DASY v4.4 and higher (Page 2), else it is restricted to ±50MHz. The uncertainty is the RSS of ConvF uncertainty at calibration frequency and the uncertainty for the indicated frequency band. Frequency validity below 300 MHz is ± 10, 25, 40, 50 and 70 MHz for ConvF assessments at 30, 64, 128, 150 and 220 MHz respectively. Above 5 GHz frequency validity can be extended to ± 110 MHz.

<sup>F</sup> At frequency below 3 GHz, the validity of tissue parameters ( $\epsilon$  and  $\sigma$ ) can be relaxed to ±10% if liquid compensation formula is applied to measured SAR values. At frequencies above 3 GHz, the validity of tissue parameters ( $\epsilon$  and  $\sigma$ ) is restricted to ±5%. The uncertainty is the RSS of the ConvF uncertainty for indicated target tissue parameters.

<sup>G</sup> Alpha/Depth are determined during calibration. SPEAG warrants that the remaining deviation due to the boundary effect after compensation is always less than ± 1% for frequencies below 3 GHz and below ± 2% for the frequencies between 3-6 GHz at any distance larger than half the probe tip diameter from the boundary.