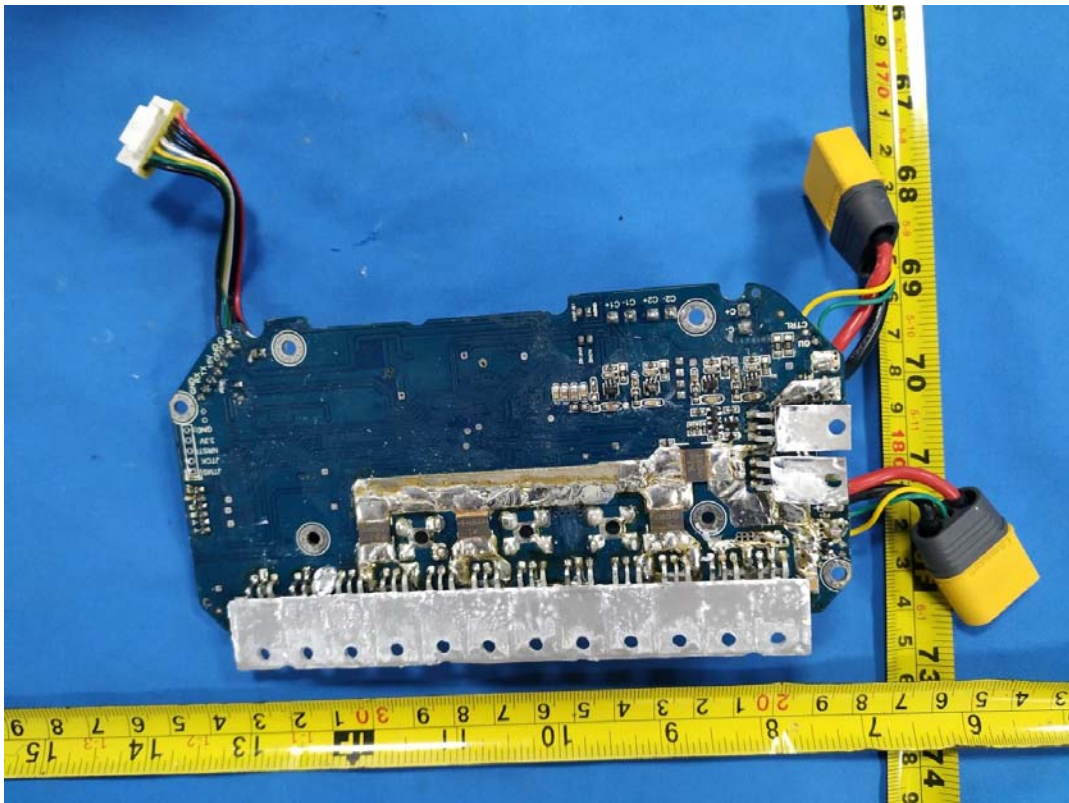
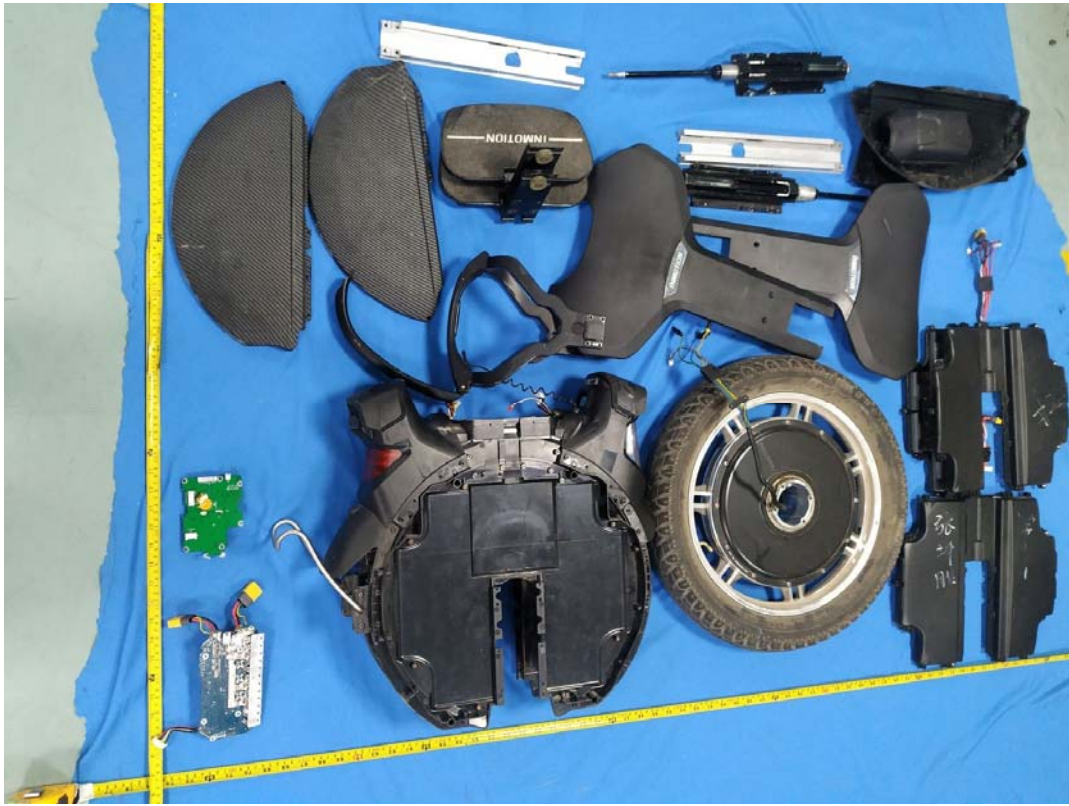
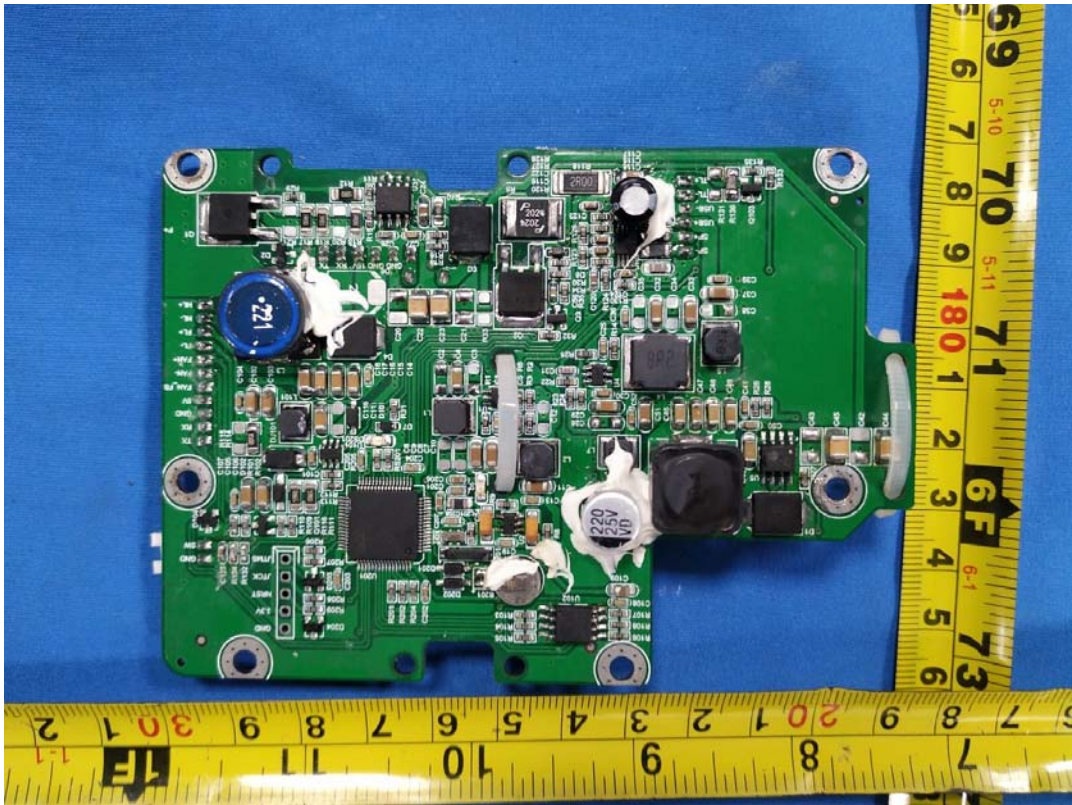
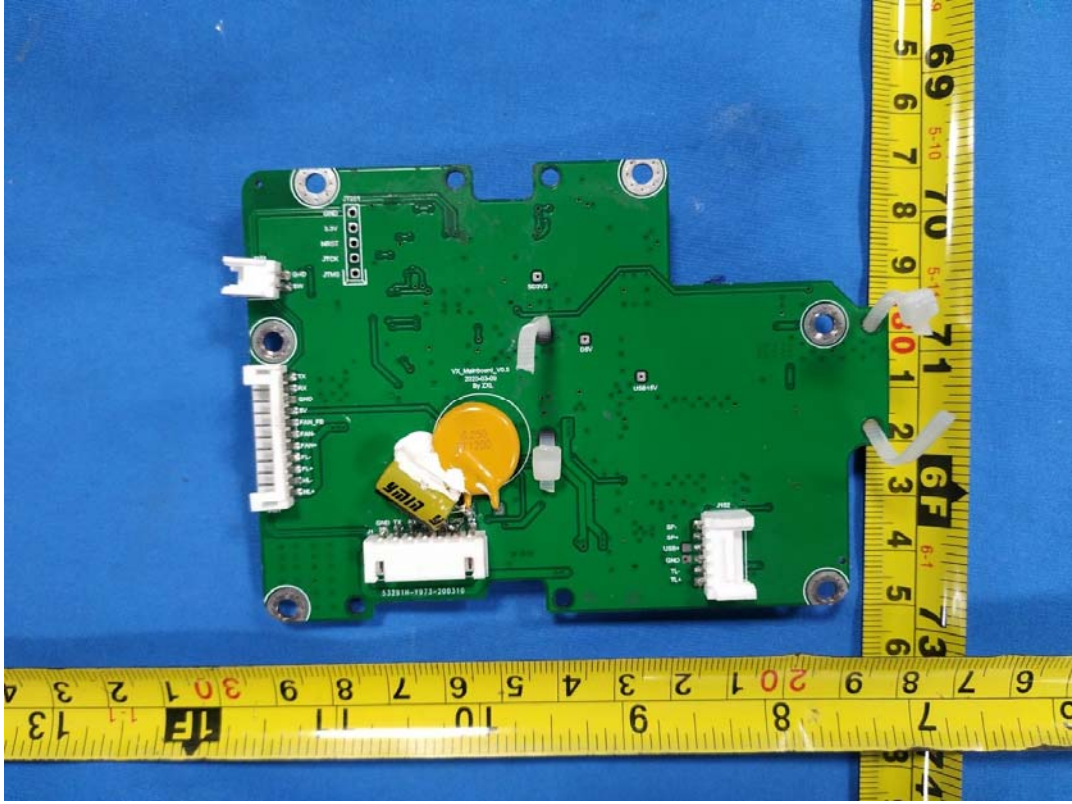
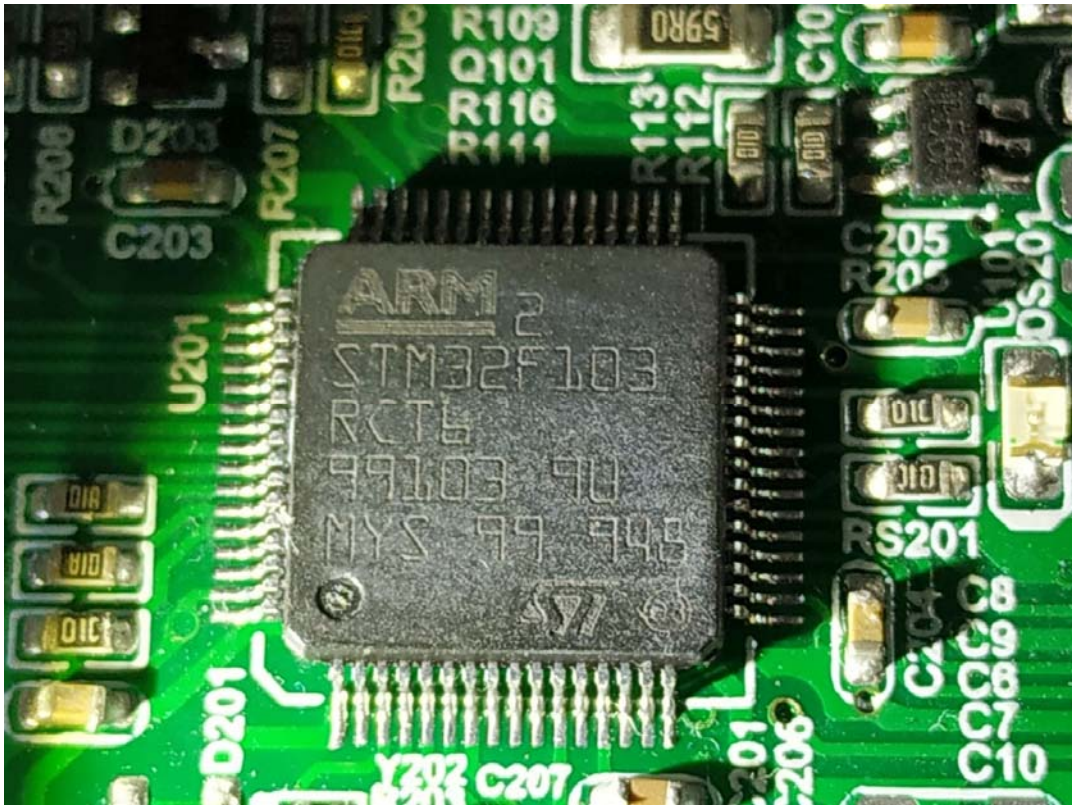
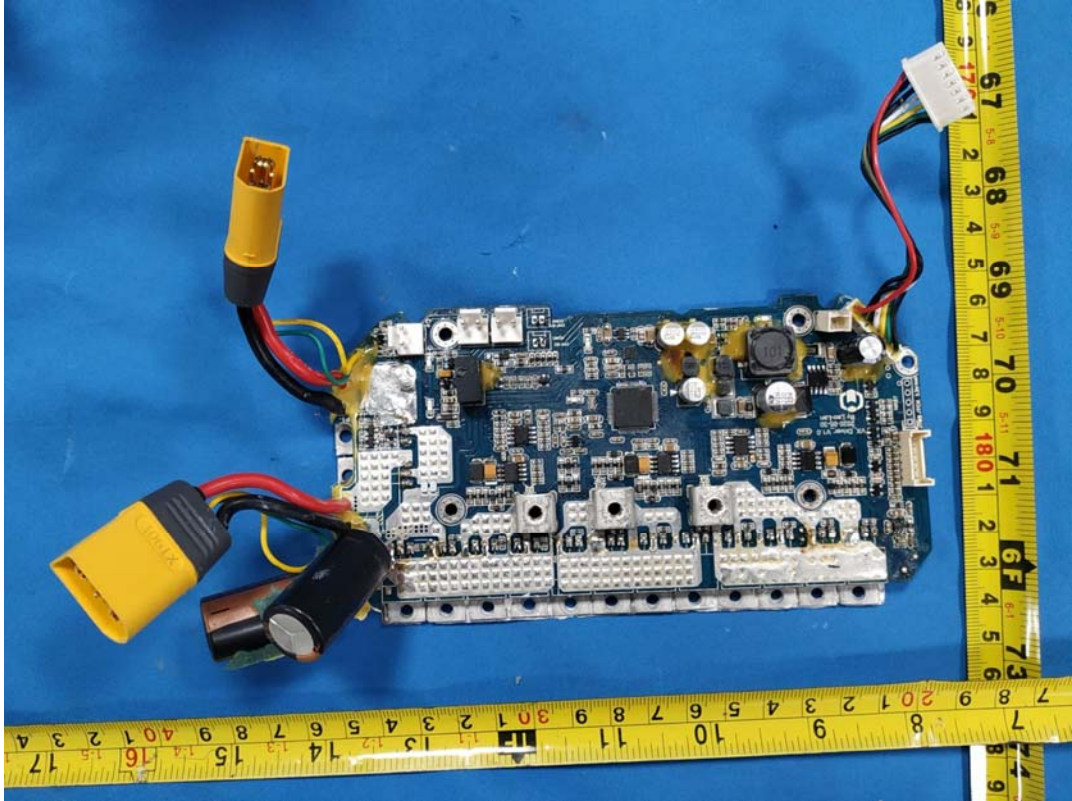


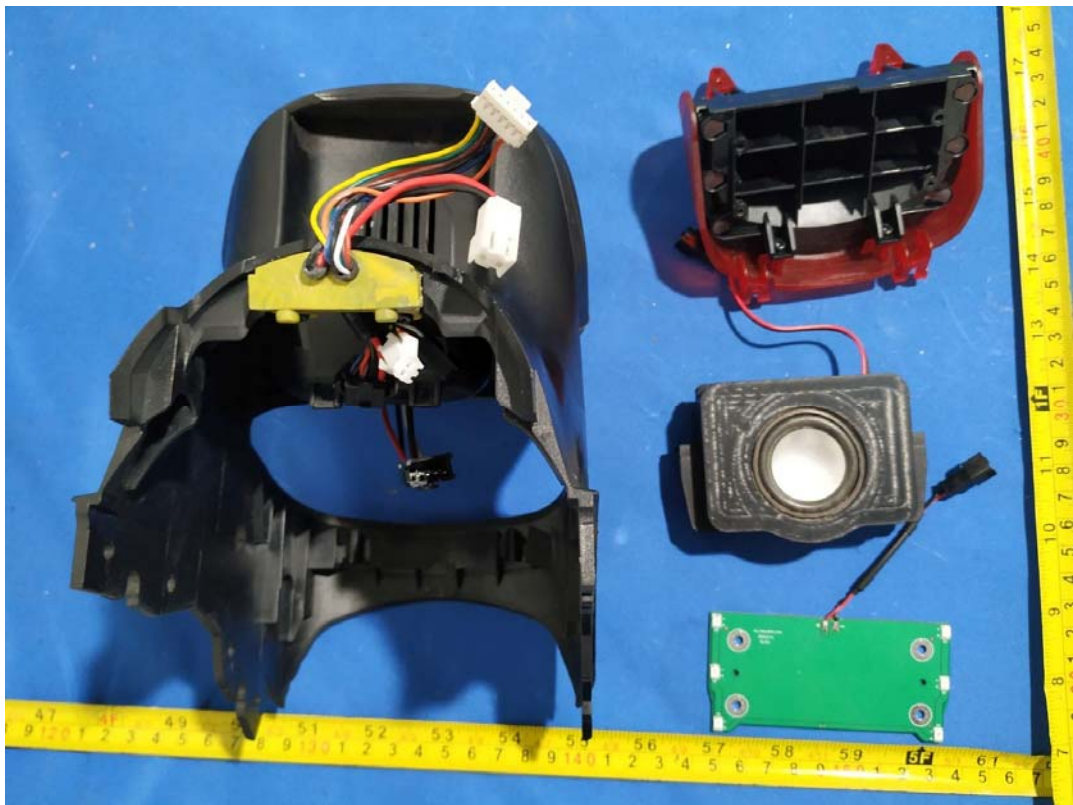
**EXHIBIT C - EUT INTERNAL PHOTOGRAPHS**



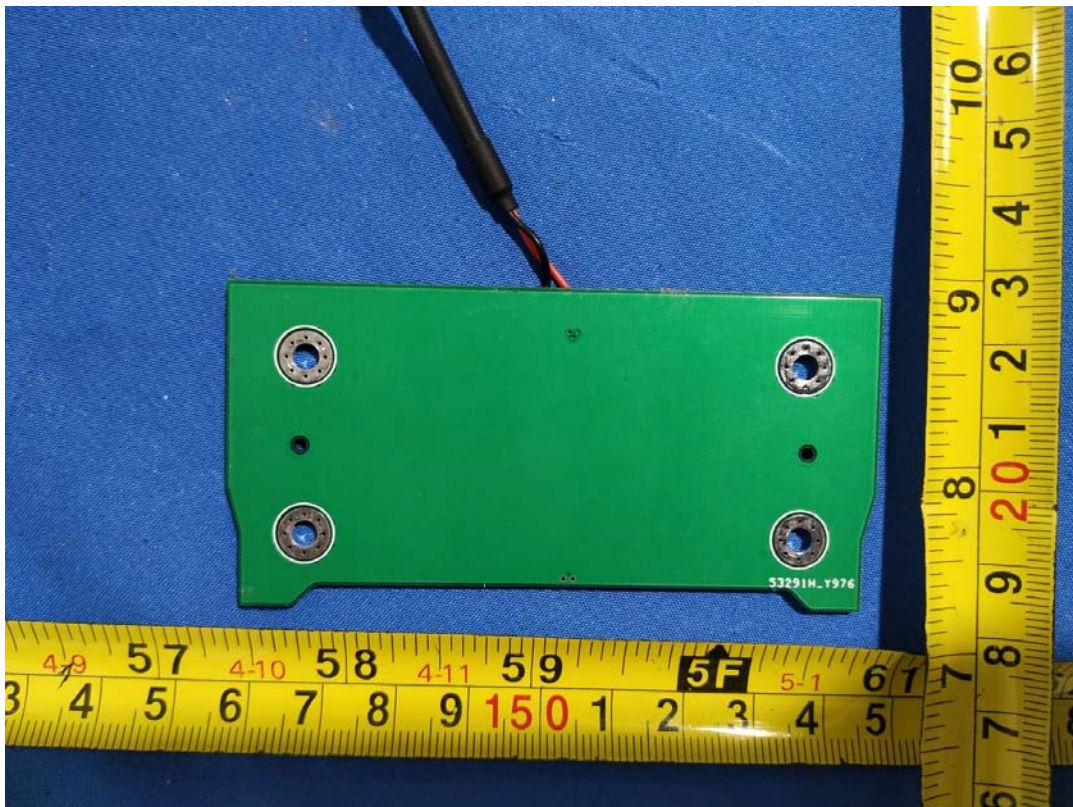
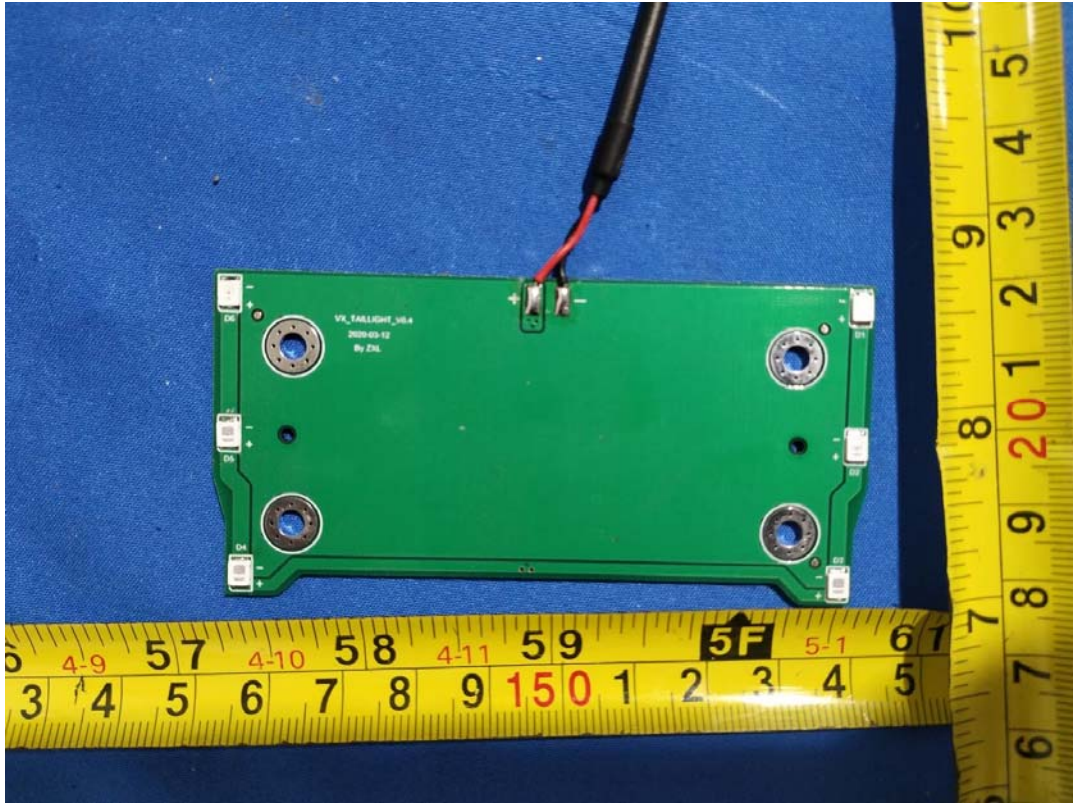




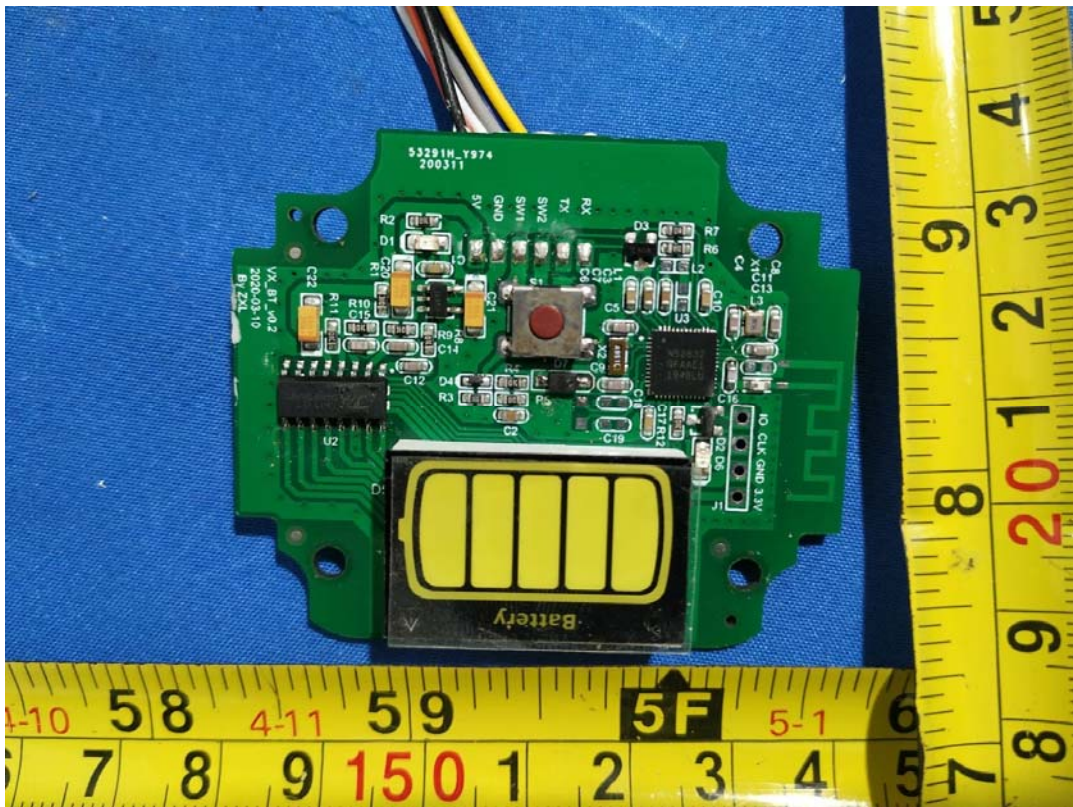




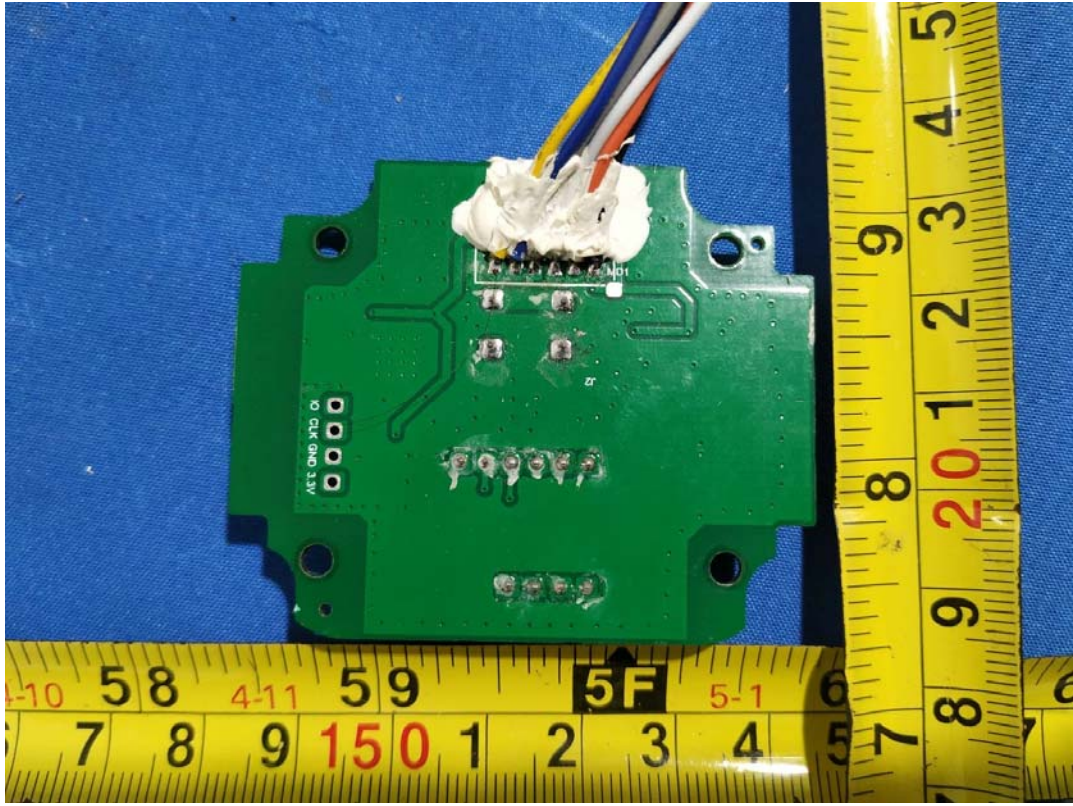




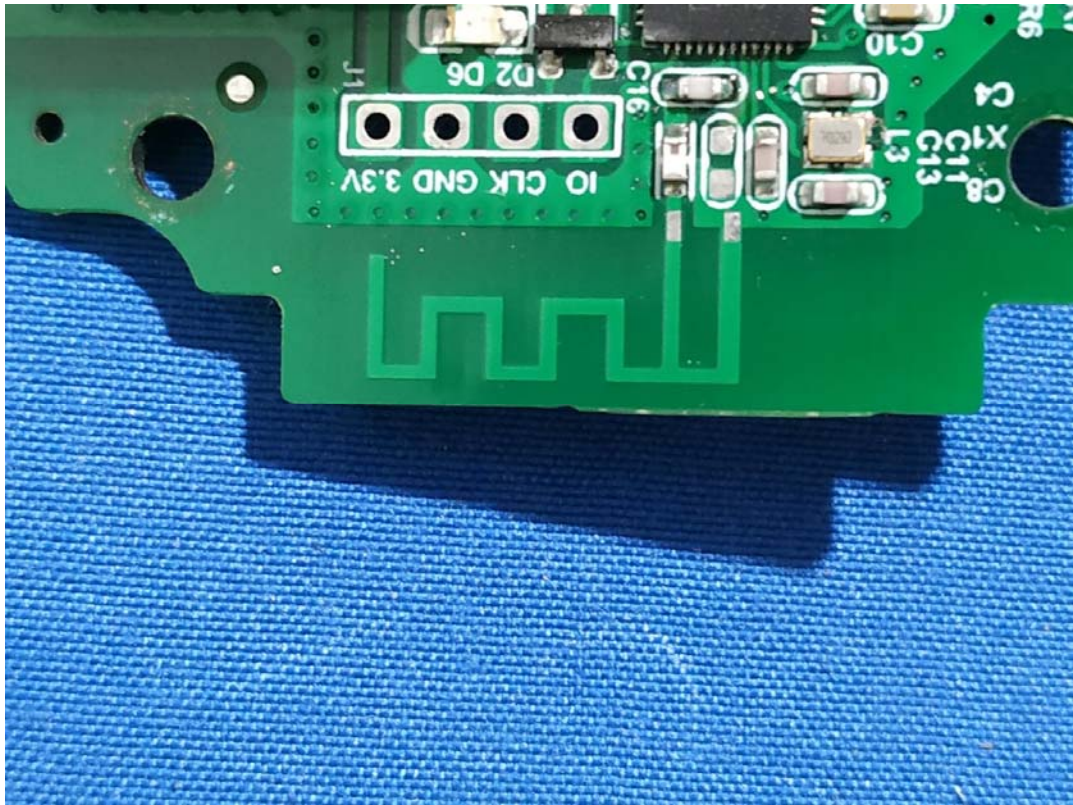




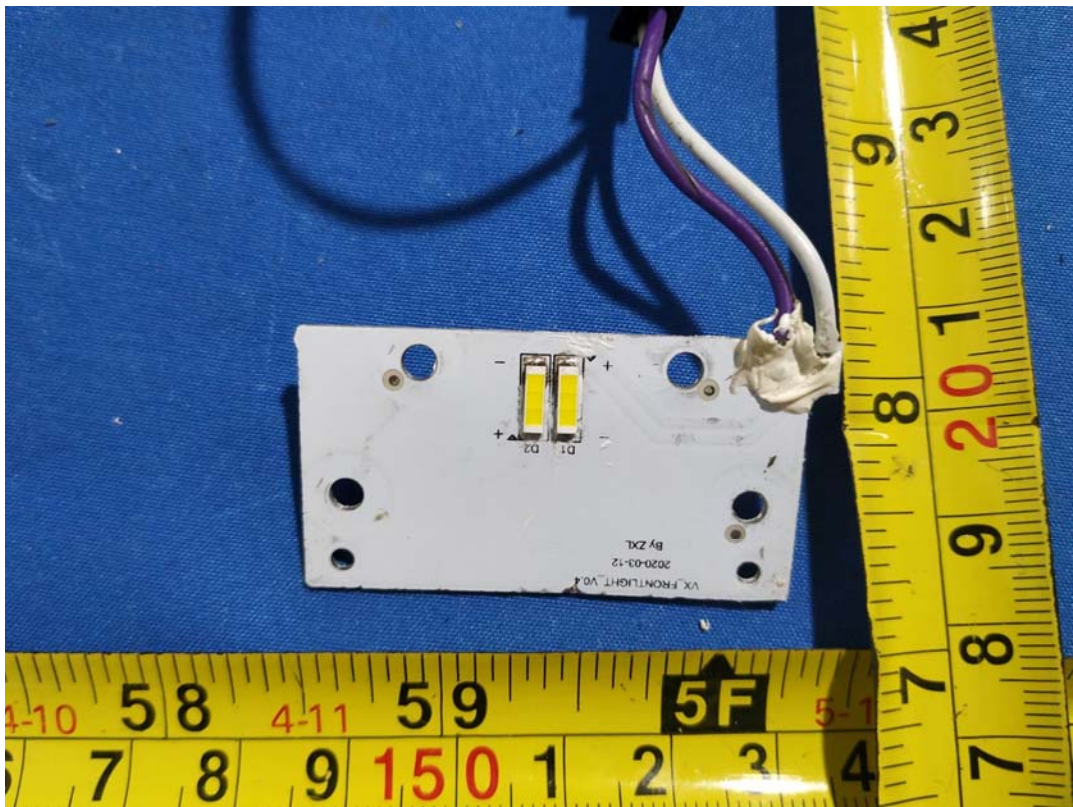




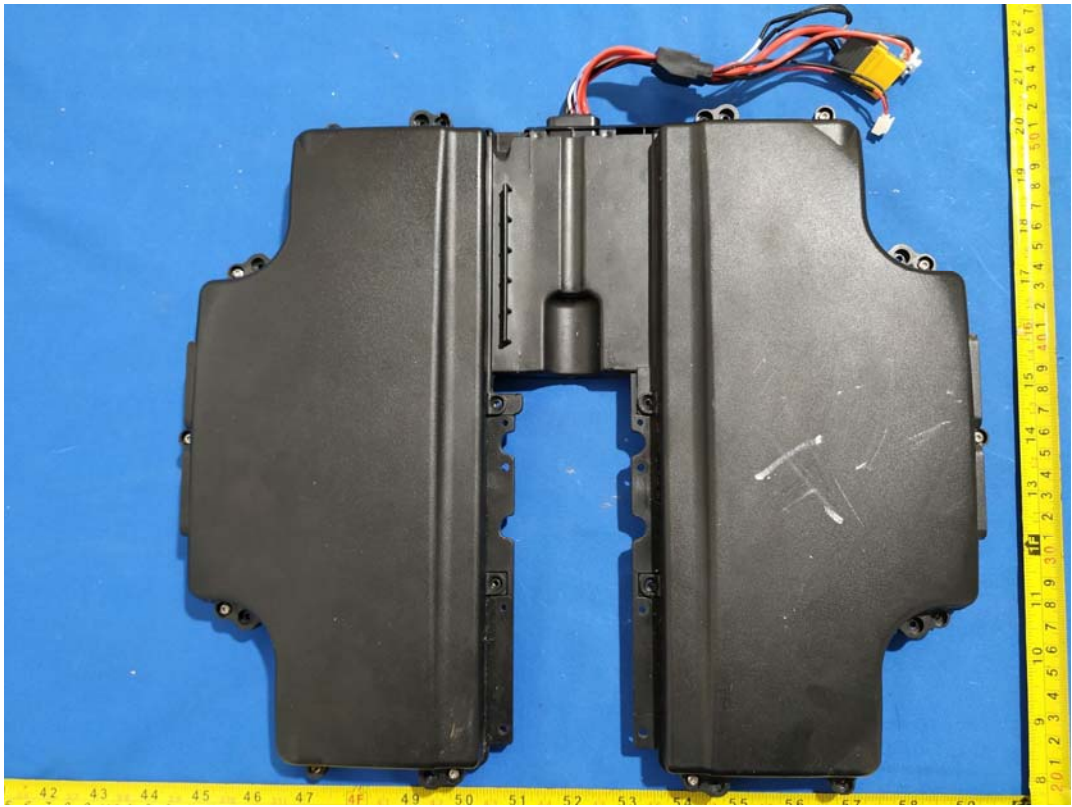
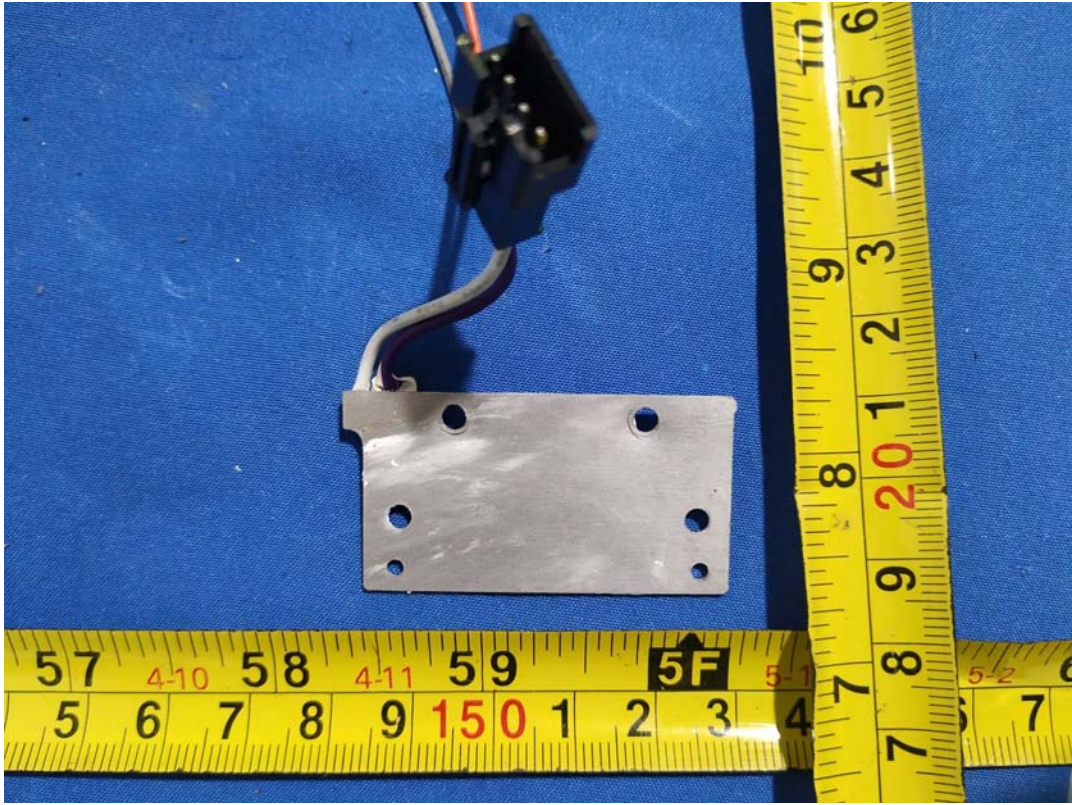
ANT







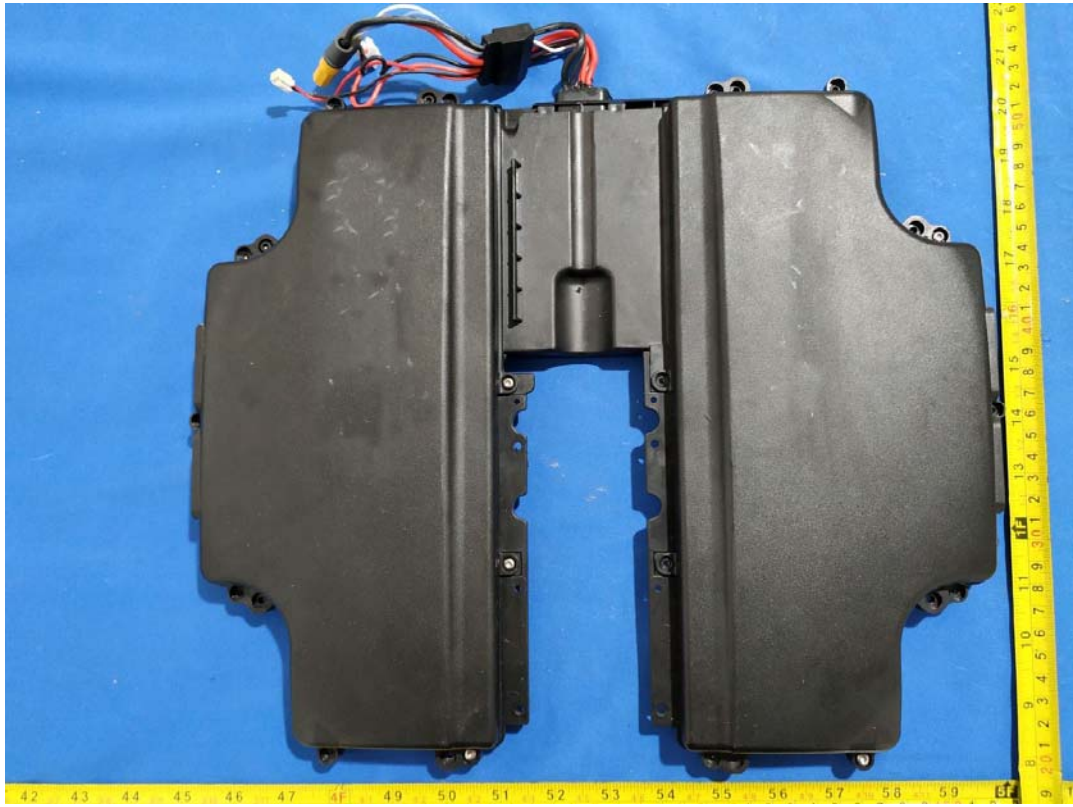














锂离子电池      Lithium Ion Battery  
型号 : LXV1174V      Model: LXV1174V  
额定电压 : 74V      Rated voltage: 74V  
充电限制电压: 84V      Input voltage: 84V  
能量 : 750Wh      Power: 750Wh



L010G0G00011

Made in China



1. 在使用前或长期存储时，请先仔细阅读说明书；  
Please read the battery safety tips carefully before use or long period storage.
2. 务必使用原装专用充电器对电池进行充电；  
Do charge the battery with the original charger adaptor.
3. 非充电状态请保持充电口盖关闭；  
Please cover the charging connector when unplugged.
4. 安装及拔出电池时请轻拿轻放，以防跌落；  
The battery can only be used on a specific INMOTION SCV model.
5. 严禁拆开电池外壳，不得对电池输出端强制放电、反接及短路；否则可能发生不可预知的危险。  
Be careful when pull out or install the battery in case of accidental falling.



制造商：东莞市力持新能源科技有限公司  
Manufacturer : DongGuan Power-Ing New Energy Technology Co., Ltd.