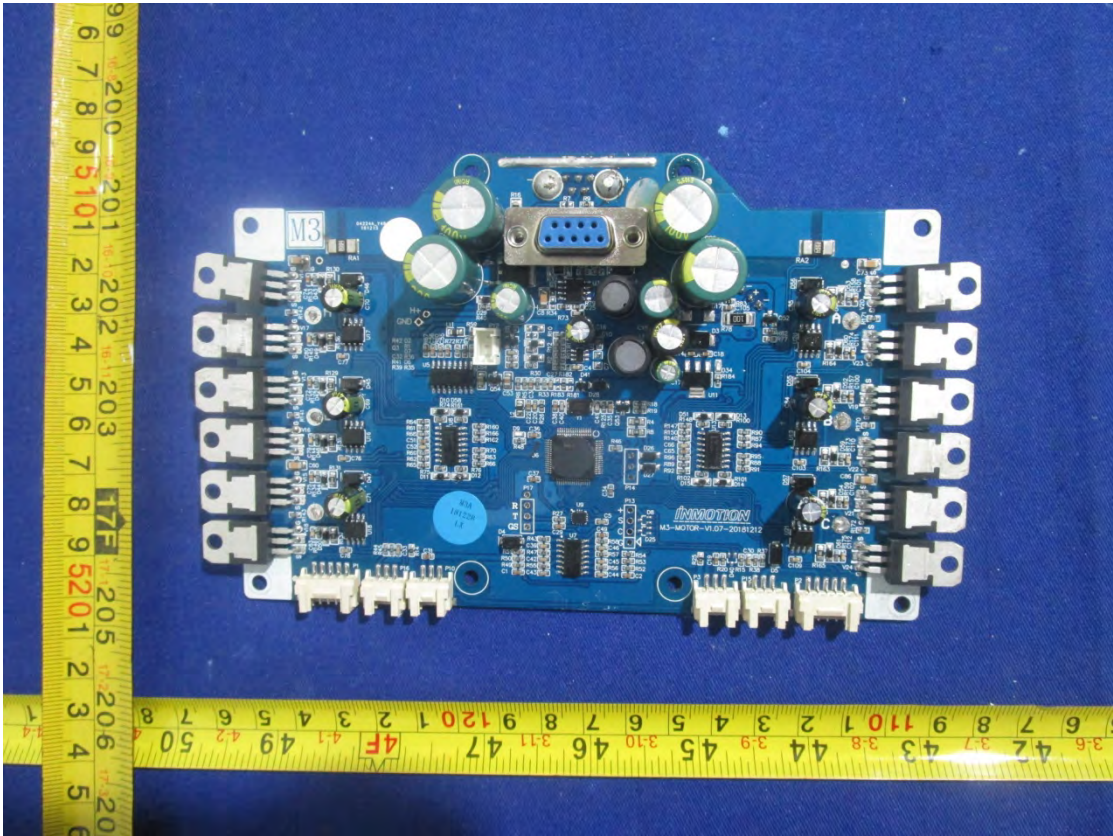
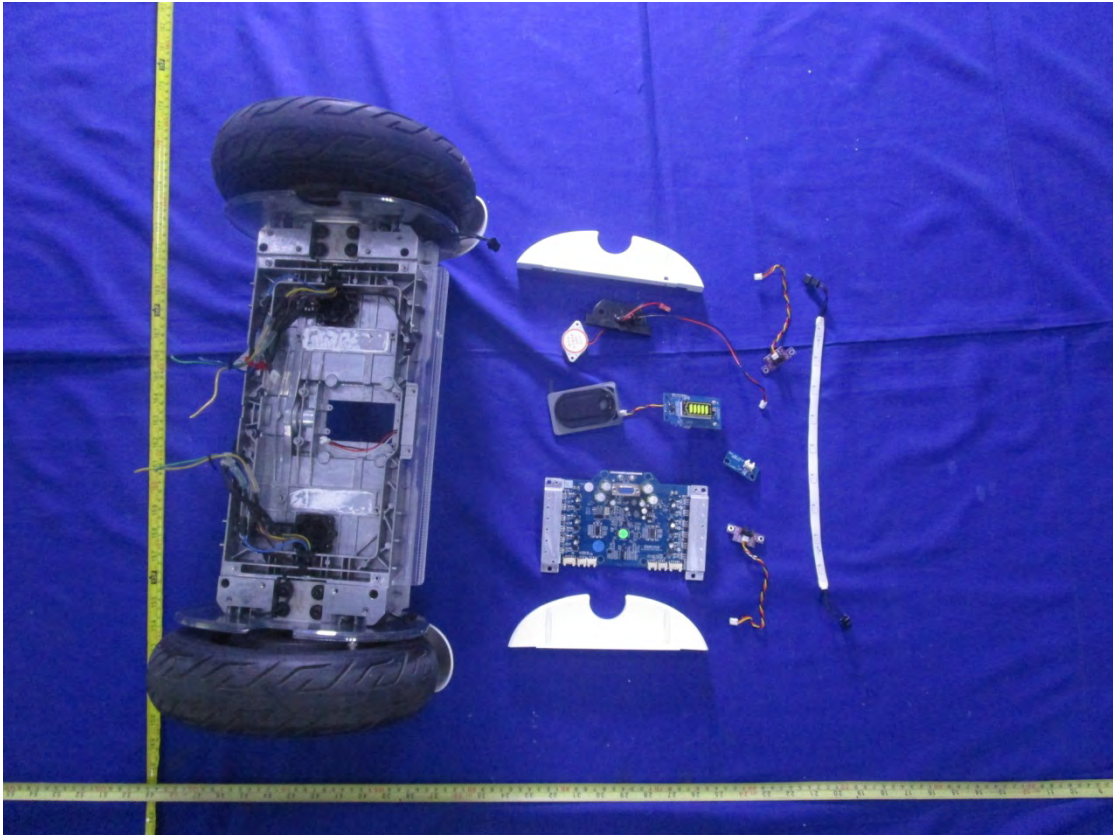


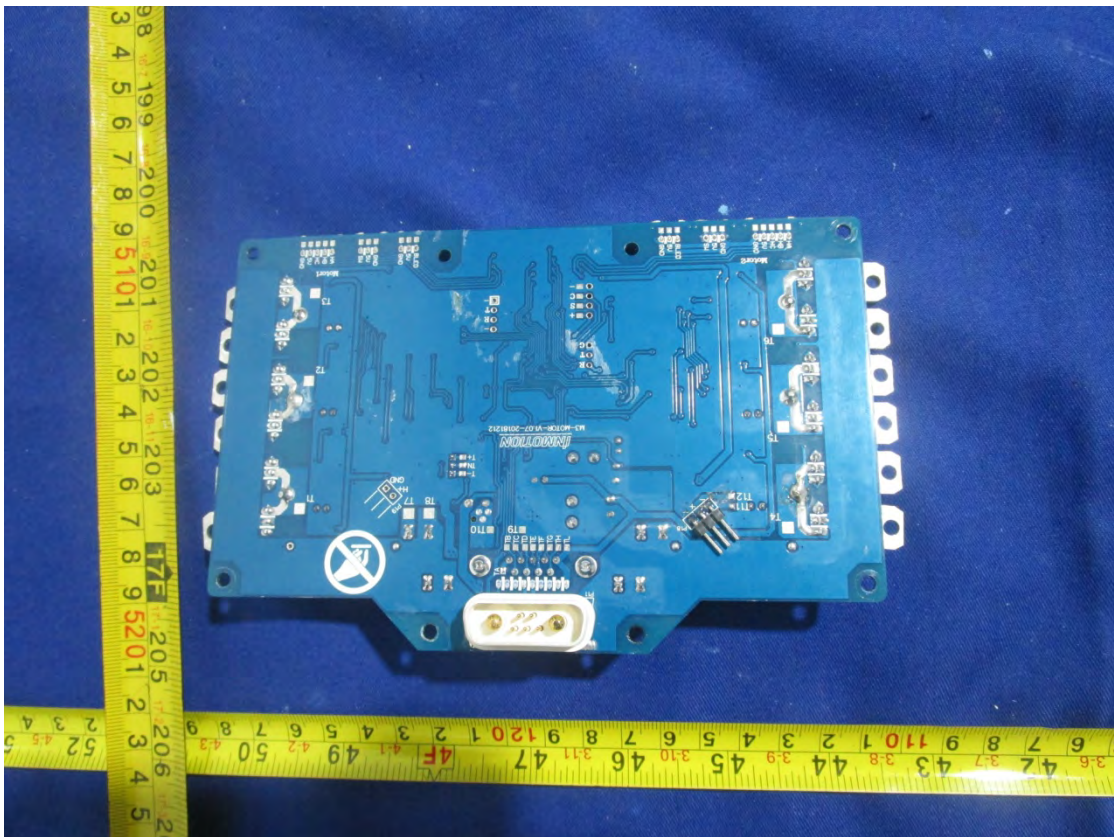
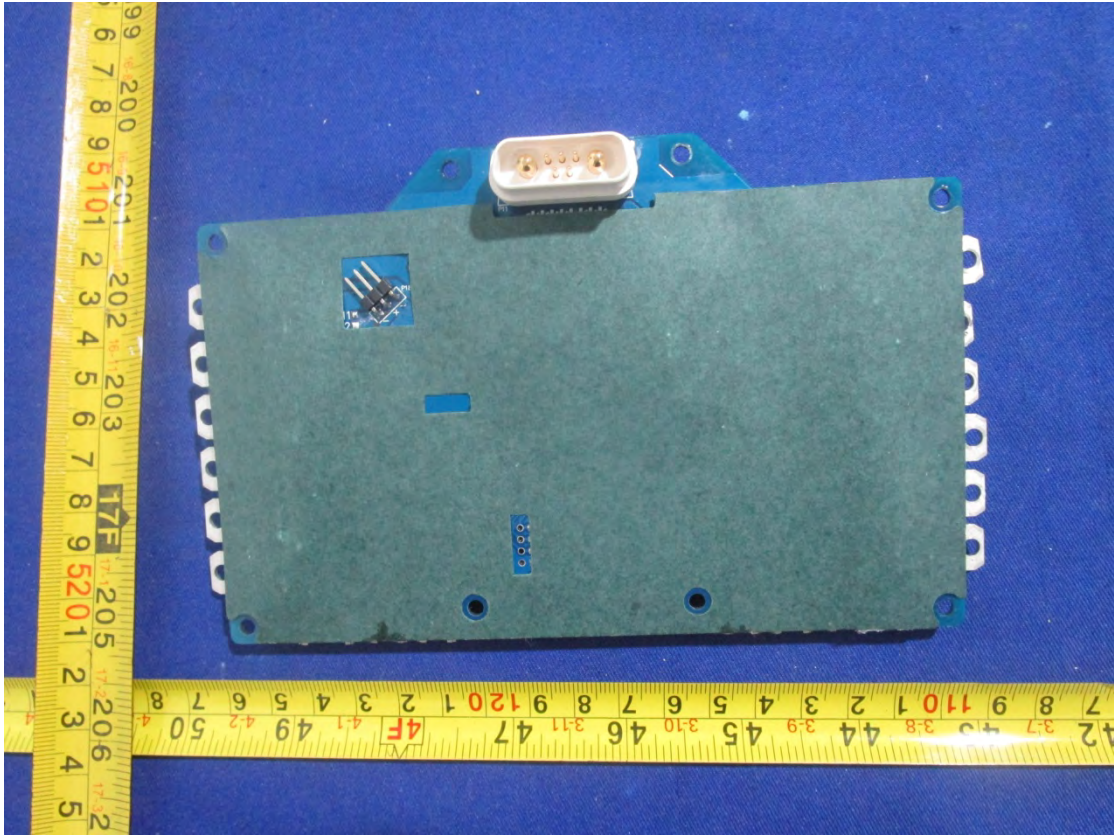
**EXHIBIT C – EUT INTERNAL PHOTOGRAPHS**



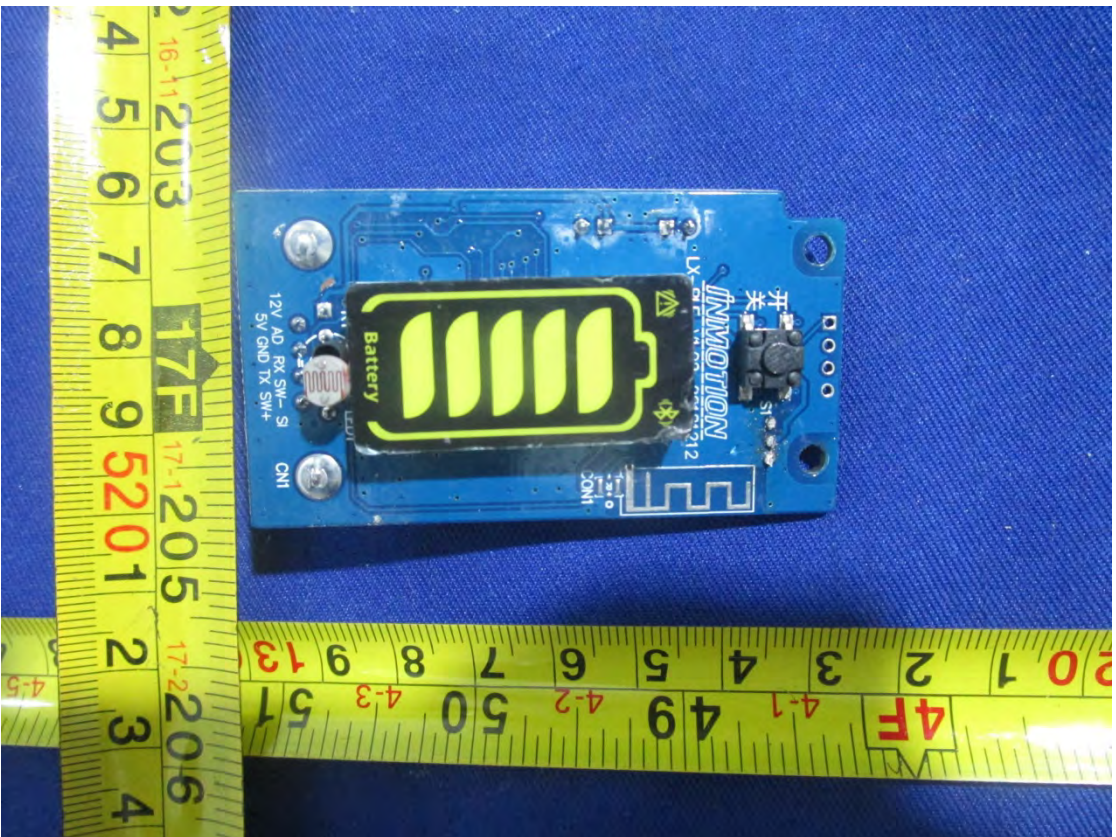
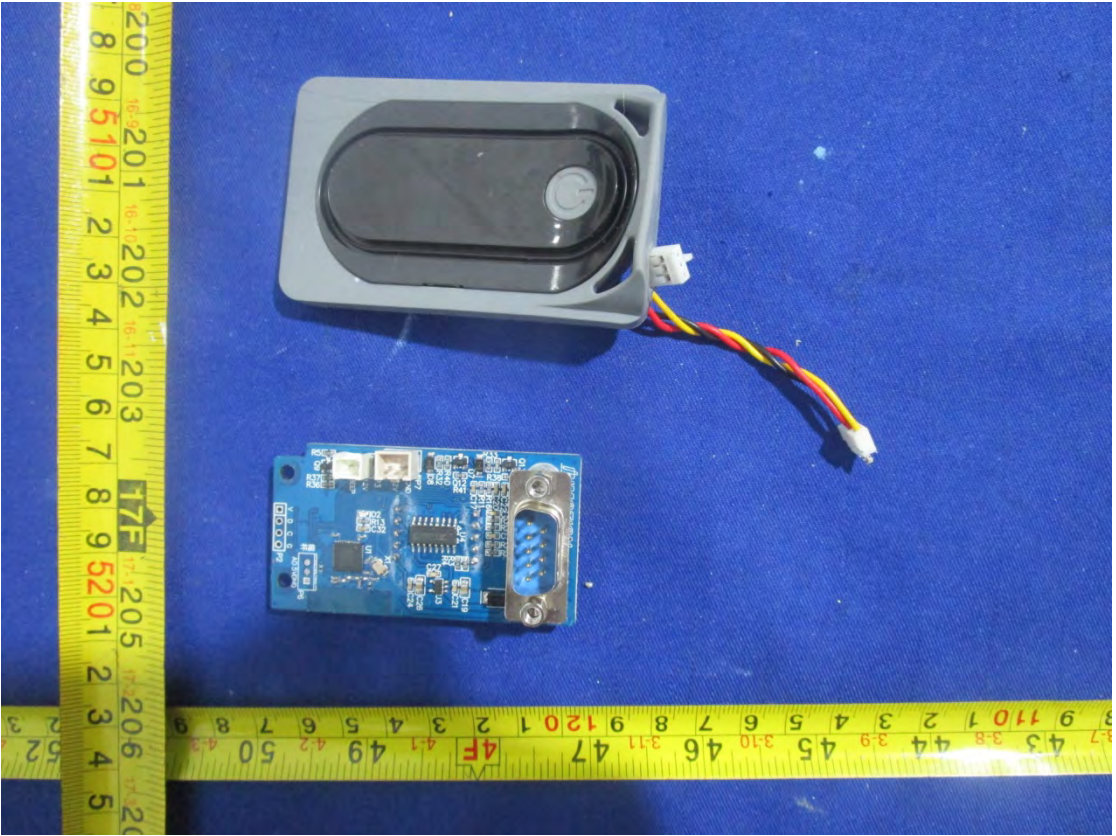




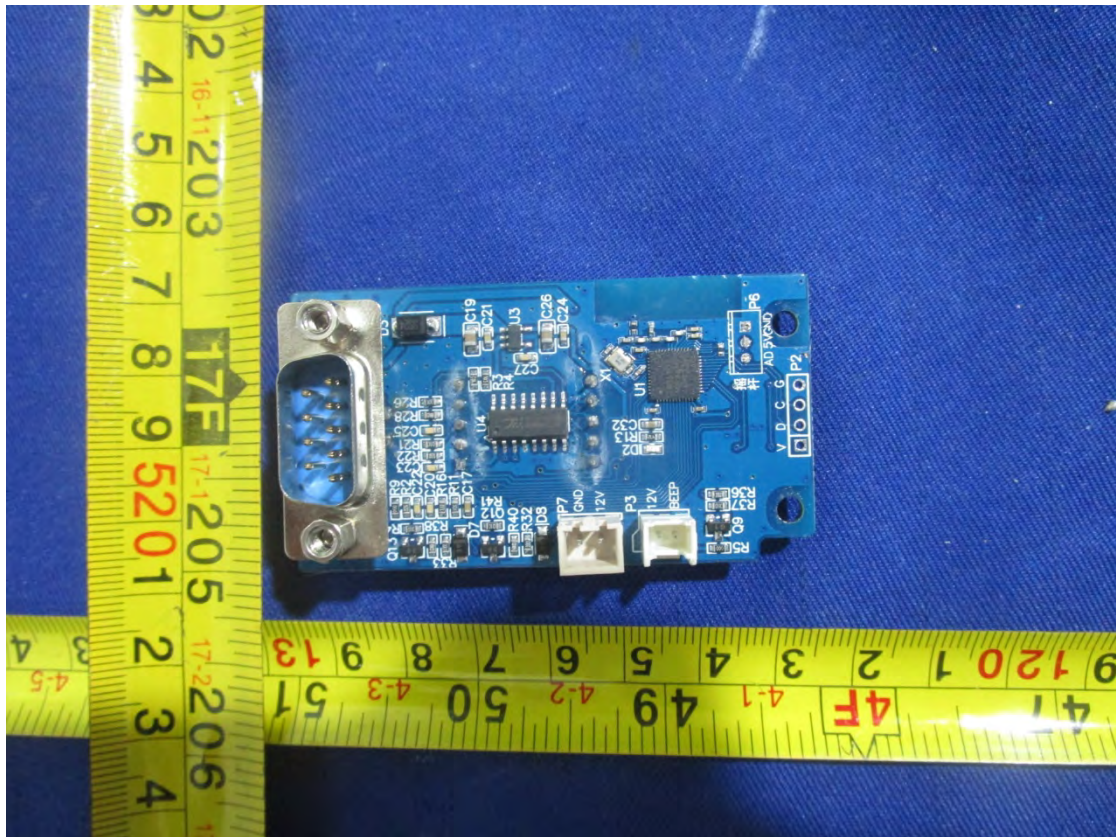










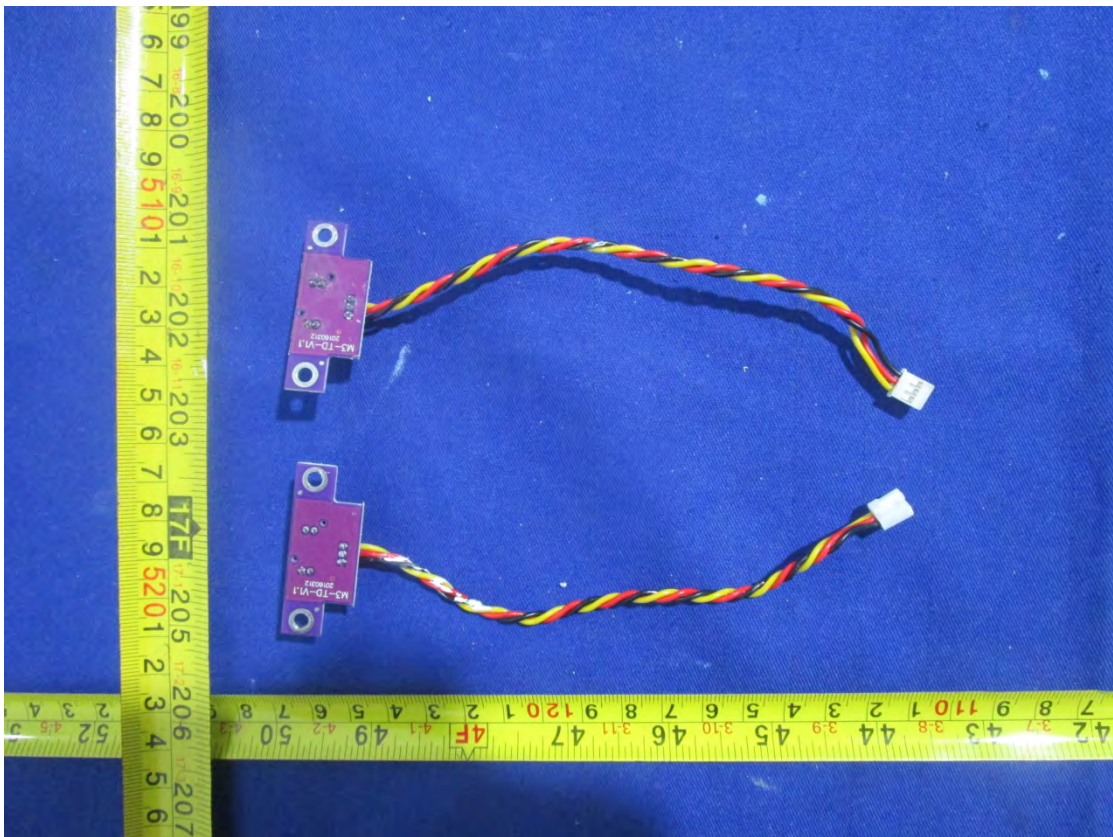
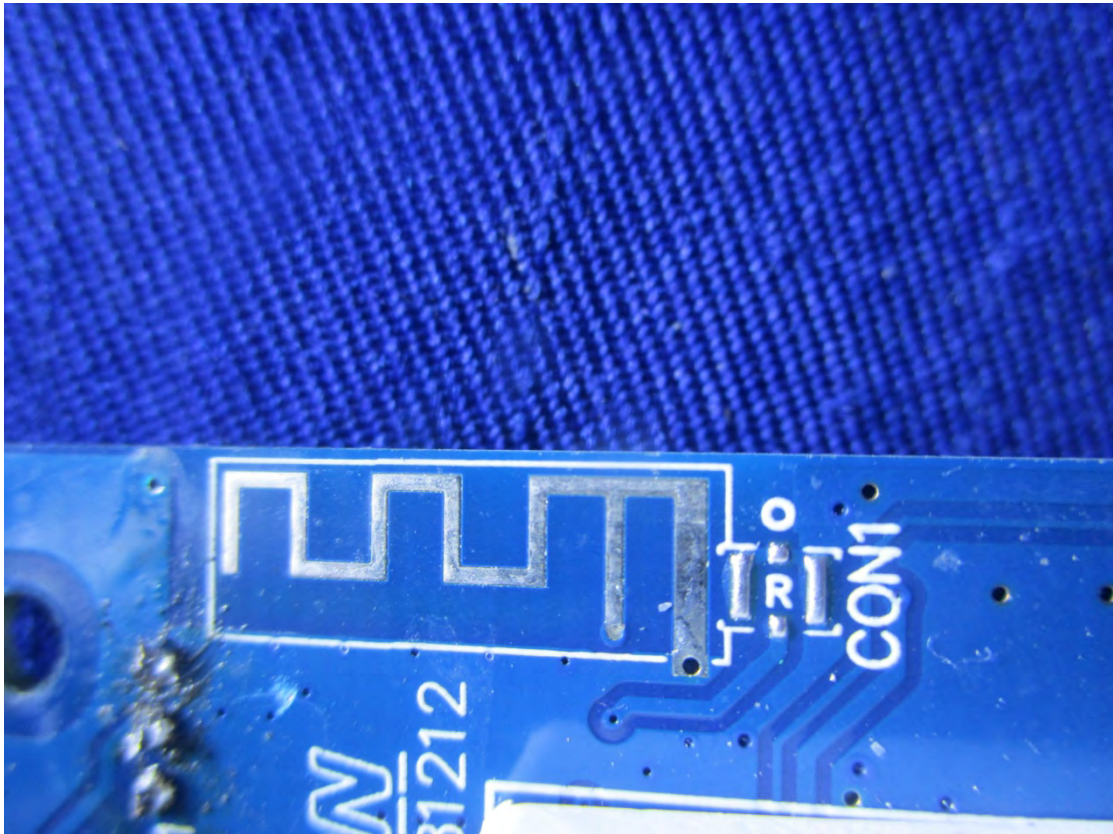


RF Chip

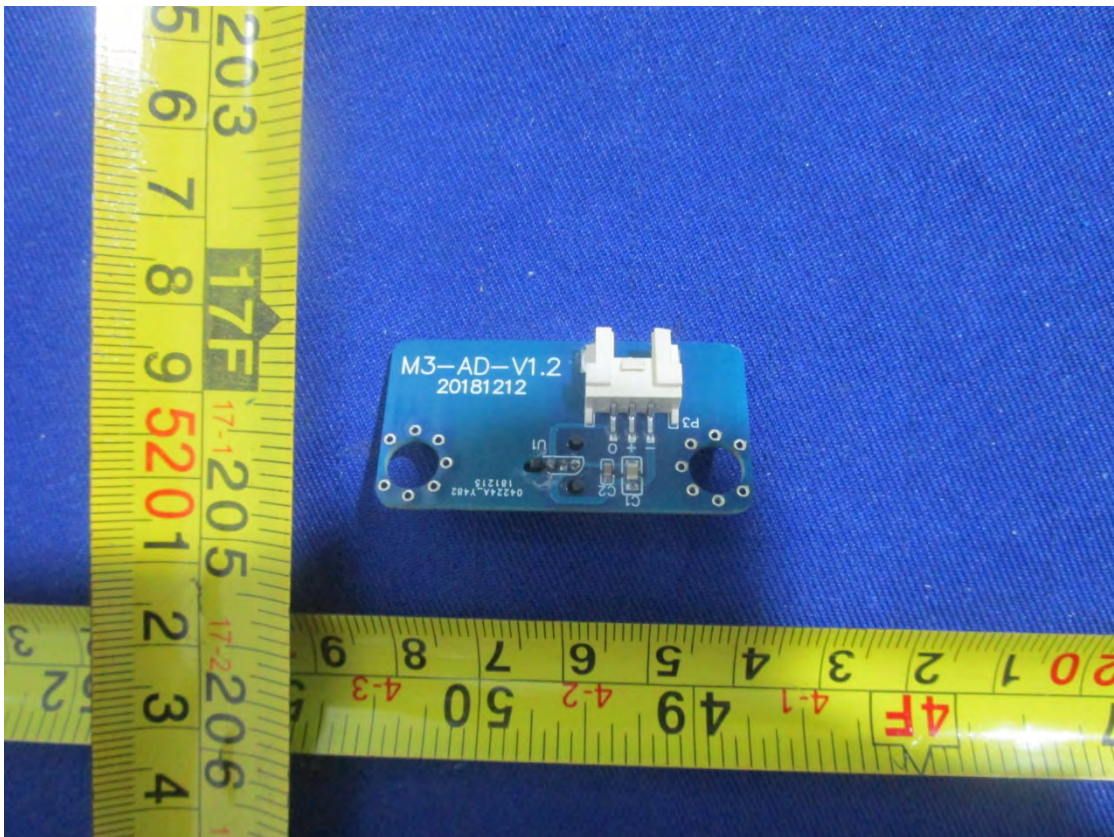
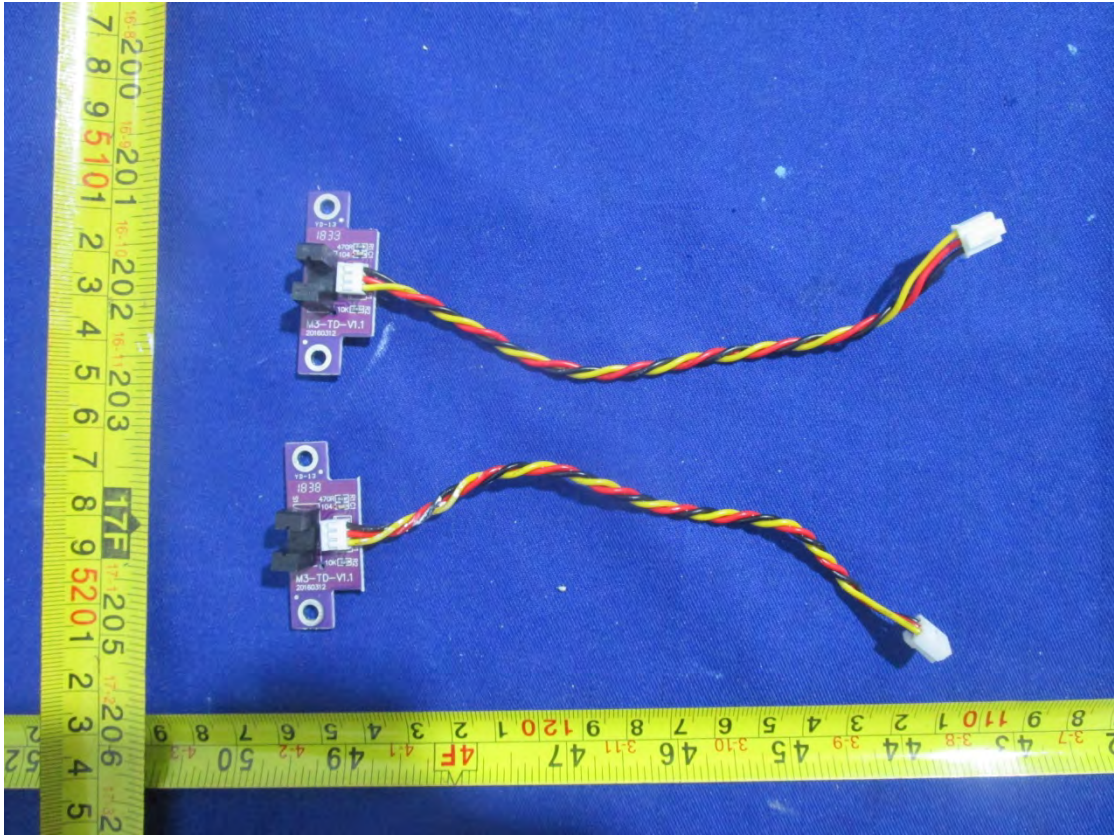




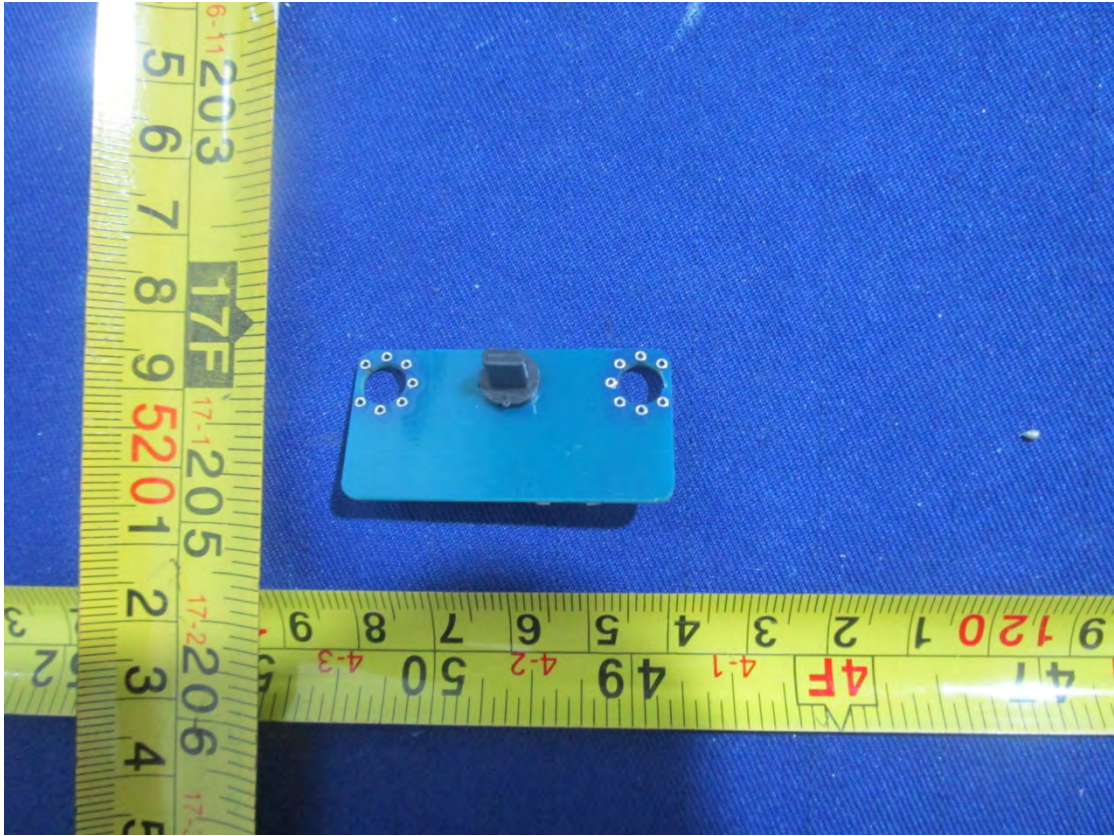
ANT















E2 Battery Label

INMOTION

警告 WARNING

---

<p>锂电池组            型号: LXE254V            额定电压: 54V            充电限制电压: 63V            额定容量: 236Wh</p>	<p>Lithium Ion Battery            Model: LXE254V            Rated Voltage: 54V            Input Voltage: 63V            Rated Capacity: 236 Wh</p>
---	--

1. 在使用前或长期存储时, 请先仔细阅读说明书。  
Please read the battery safety tips carefully before use or long period storage.
2. 务必使用原装专用充电器对电池进行充电。  
Do charge the battery with the original charger adaptor.
3. 非充电状态请保持充电口盖关闭。  
Please cover the charging connector when unplugged.
4. 该电池只能应用于指定型号的乐行体感车。  
Do not attempt to open the shell of the battery or causes short circuit in case of unknown risks and danger.
5. 安装及拔出电池时请轻拿轻放, 以防跌落。  
The battery can only be used on a specific INMOTION SCV model.
6. 严禁拆开电池外壳, 不得对电能输出端强制放电, 反接及短路, 否则可能发生不可预知的危险。  
Be careful when pull out or install the battery in case of accidental falling.

内有高电压危险! 禁止拆解电池组!

High Voltage Inside, Do Not Dossassemble the Battery Park!

制造商: 东莞市力持新能源科技有限公司  
 Manufacturer: DongGuan Power-Ing New Energy Technology Co., Ltd.



E3 Battery Label

**INMOTION**

**警告 WARNING**

锂电池组

型号: LXE354V

额定电压: 54V

充电限制电压: 63V

额定容量: 300 Wh

Lithium\_ion Battery

Model: LXE354V

Rated Voltage: 54V

Input Voltage: 63V

Rated Capacity: 300 Wh

1. 在使用前或长期存储时, 请先仔细阅读说明书;  
Please read the battery safety tips carefully before use or long period storage.
2. 务必使用原装专用充电器对电池进行充电;  
Do charge the battery with the original charger adaptor.
3. 非充电状态请保持充电口盖关闭;  
Please cover the charging connector when unplugged.
4. 该电池只能应用于指定型号的乐行体感车;  
Do not attempt to open the shell of the battery or cause a short circuit in case of unknown risks and danger.
5. 安装及拔出电池时请轻拿轻放, 以防跌落;  
The battery can only be used on a specific INMOTION SCV model.
6. 严禁拆开电池外壳, 不得对电池输出端强制放电、反接及短路, 否则可能发生不可预知的危险。  
Be careful when pull out or install the battery in case of accidental falling.



制造商: 东莞市力持新能源科技有限公司

Manufacturer: DongGuan Power-Ing New Energy Technology Co., Ltd.

**内有高电压危险! 禁止拆解电池组!**

**High Voltage Inside, Do Not Dossassemble the Battery Park!**